

100% STATE
0004

PAY ITEM NUMBER	PAY ITEM DESCRIPTION	UNIT	QUANTITIES
20100210	TREE REMOVAL (OVER 15 UNITS DIAMETER)	UNIT	24
20101100	TREE TRUNK PROTECTION	EACH	11
20200100	EARTH EXCAVATION	CU YD	529
20201200	REMOVAL AND DISPOSAL OF UNSUITABLE MATERIAL	CU YD	10
20800150	TRENCH BACKFILL	CU YD	23
21101600	TOPSOIL FURNISH AND PLACE, VARIABLE DEPTH	SQ YD	3,139
25000330	SEEDING, CLASS 6	ACRE	0.75
25000400	NITROGEN FERTILIZER NUTRIENT	POUND	65
25000500	PHOSPHORUS FERTILIZER NUTRIENT	POUND	65
25000600	POTASSIUM FERTILIZER NUTRIENT	POUND	65
25100105	MULCH, METHOD 1	ACRE	0.75
28000250	TEMPORARY EROSION CONTROL SEEDING	POUND	77
30103000	SHAPING AND GRADING ROADWAY	UNIT	15
31101900	SUBBASE GRANULAR MATERIAL, TYPE C	TON	20
35100100	AGGREGATE BASE COURSE, TYPE A	TON	1,620
35100700	AGGREGATE BASE COURSE, TYPE A 8"	SQ YD	861
35600708	HOT-MIX ASPHALT BASE COURSE WIDENING, 8"	SQ YD	242
40300200	BITUMINOUS MATERIALS (PRIME COAT)	TON	23
40600625	LEVELING BINDER (MACHINE METHOD), N50	TON	4,219
40600982	HOT-MIX ASPHALT SURFACE REMOVAL - BUTT JOINT	SQ YD	2,212
40603310	HOT-MIX ASPHALT SURFACE COURSE, MIX "C", N50	TON	5,034
42000060	WELDED WIRE REINFORCEMENT	SQ YD	566
42300200	PORTLAND CEMENT CONCRETE DRIVEWAY PAVEMENT, 6	SQ YD	566
44000155	HOT-MIX ASPHALT SURFACE REMOVAL, 1 1/2"	SQ YD	50

△ REV. 6-6-2019

MODEL: Default
FILE NAME: P:\18-1009\03110_CADD\CADD_Sheets\18-1009_03_Sht_03_SQO.dgn



USER NAME = gdc	DESIGNED - BCD	REVISED -
PLOT SCALE = 1:50	DRAWN - GDC	REVISED -
PLOT DATE = 3/27/2019	CHECKED - LDC	REVISED -
	DATE - 03/27/2019	REVISED -

DESIGNED - BCD	REVISED -
DRAWN - GDC	REVISED -
CHECKED - LDC	REVISED -
DATE - 03/27/2019	REVISED -

**STATE OF ILLINOIS
DEPARTMENT OF TRANSPORTATION**

**ELDON HAZLET STATE PARK
SUMMARY OF QUANTITIES**

SCALE: SHEET 1 OF 2 SHEETS STA. TO STA.

F.A. RTE.	SECTION	COUNTY	TOTAL SHEETS	SHEET NO.
	ELDON HAZLET 2019	CLINTON	33	3
CONTRACT NO.46916				
ILLINOIS FED. AID PROJECT				

100% STATE
0004

PAY ITEM NUMBER	PAY ITEM DESCRIPTION	UNIT	QUANTITIES
44000600	SIDEWALK REMOVAL	SQ FT	15
48102100	AGGREGATE WEDGE SHOULDER, TYPE B	TON	987
50105220	PIPE CULVERT REMOVAL	FOOT	80
542D0217	PIPE CULVERTS, CLASS D, TYPE 1 12"	FOOT	40
542D0229	PIPE CULVERTS, CLASS D, TYPE 1 24"	FOOT	40
60300305	FRAMES AND LIDS TO BE ADJUSTED	EACH	3
67100100	MOBILIZATION	L SUM	1
* 72000100	SIGN PANEL - TYPE 1	SQ FT	14
* 72800100	TELESCOPING STEEL SIGN SUPPORT	FOOT	84
* 78001100	PAINT PAVEMENT MARKING - LETTERS AND SYMBOLS	SQ FT	42
* 78001110	PAINT PAVEMENT MARKING - LINE 4"	FOOT	17,860
* 78001150	PAINT PAVEMENT MARKING - LINE 12"	FOOT	72
X0300019	REMOVE AND REINSTALL PARKING BLOCKS	EACH	157
X0323378	CONCRETE PARKING BLOCKS	EACH	43
* X0327592	LARGE ENTRANCE SIGN	EACH	1
* X0327593	SMALL ENTRANCE SIGN	EACH	1
X0327171	SCARIFY EXISTING SURFACE	SQ YD	9,037
* X2600016	MINOR SIGN COMPLETE	EACH	7
X7010216	TRAFFIC CONTROL AND PROTECTION, (SPECIAL)	L SUM	1
X7240300	SIGN REMOVAL	EACH	9

* SPECIALTY ITEM

△ REV. 6-6-2019

MODEL: Default
FILE NAME: P:\18-1009\03110_CADD\CADD_Sheets\18-1009_03_Sht_04_SQO 2.dgn



USER NAME = gdc	DESIGNED - BCD	REVISED -
	DRAWN - GDC	REVISED -
PLOT SCALE = 1:50	CHECKED - LDC	REVISED -
PLOT DATE = 3/27/2019	DATE - 03/27/2019	REVISED -

STATE OF ILLINOIS
DEPARTMENT OF TRANSPORTATION

ELDON HAZLET STATE PARK
SUMMARY OF QUANTITIES

SCALE: SHEET 2 OF 2 SHEETS STA. TO STA.

F.A. RTE.	SECTION	COUNTY	TOTAL SHEETS	SHEET NO.
	ELDON HAZLET 2019	CLINTON	33	4
CONTRACT NO.46916				
ILLINOIS FED. AID PROJECT				

PAVEMENT SCHEDULE

LOCATION	BIT MATLS PR CT (TON)	HMA SURF REM BUTT JT (SQ YD)	HMA SC "C" N50 (TON)	AGG BASE CSE A (TON)	LEV BIND MM N50 (TON)	PCC DRIVEWAY PAVT 6 (SQ YD)	HMA BC WID 8 (SQ YD)	AGG BASE CSE A 8 (SQ YD)	AGG WEDGE SHLD TYPE B (TON)	TOPSOIL F & P VAR DP (SQ YD)	EARTH EXCAVATION (CU YD)	SHAPING & GRAD RDWAY (UNIT)	SCARIFY EX SURFACE (SQ YD)	SIDEWALK REM (SQ FT)	FR & LIDS ADJUST (EACH)
HAZLET STATE PARK ROAD															
100+35.65 TO 148+67.41	4	748	1,122		935				506						
STATE PARK ROAD															
36+20.00 TO 69+64.33	3	438	818		682				406						
PARKING LOT	1	58	57		48				12			1			
BOAT RAMP LOOP ROAD															
200+00.00 TO 218+43.31	3	413	766		639	209			63	678	19	3			
TRAIL HEAD ROAD															
300+00.00 TO 320+93.12	2	62	470		392	89				1,036	9	1			
YOUTH CAMP ROAD															
400+00.00 TO 409+63.79	1		300		272	89				555	9	1			
COTTAGE ACCESS ROAD															
500+00.00 TO 509+80.00	1	40	197		164	45		121		485	31	1		15	
APACHE BOAT RAMP															
600+00.00 TO 603+24.00	1	403	94		79		242			104	54				
NEW APACHE LOT	5	50	1,167	1,620	972	134		590		201	407	6	9,037		3
ILLINI CAMPGROUND															
SITE 119	1		24		20			133		38		1			
SITE 308	1		19		16			17		42		1			
TOTAL	23	2,212	5,034	1,620	4,219	566	242	861	987	3,139	529	15	9,037	15	3

PAVEMENT MARKING AND SIGN SCHEDULE

LOCATION	PT PVT MK LTR & SYM (SQ FT)	PAINT PVT MK LINE 4" (FOOT)			PAINT PVT MK LINE 12" (FOOT) WHITE SOLID	SIGN PANEL TYPE 1 (SQ FT)	TELES STL SIN SUPPORT (FOOT)	LARGE ENTRANCE SIGN (EACH)	SMALL ENTRANCE SIGN (EACH)	MINOR SIGN COMPLETE (EACH)	SIGN REMOVAL (EACH)
		YELLOW SKIPS	WHITE SOLID	YELLOW SOLID							
HAZLET STATE PARK ROAD											
100+35.65 TO 148+67.41		1,208			24			1			1
STATE PARK ROAD											
36+20.00 TO 69+64.33		836			12				1		1
BOAT RAMP LOOP ROAD											
200+00.00 TO 218+43.31	13	461	3,071	640	12	8	48				
TRAIL HEAD ROAD											
300+00.00 TO 320+93.12	7		580	300	12						
YOUTH CAMP ROAD											
400+00.00 TO 409+63.79	7			300							
COTTAGE ACCESS ROAD											
500+00.00 TO 509+80.00	4		180	160		2	12		1		1
APACHE BOAT RAMP											
600+00.00 TO 603+24.00		81			12				1		1
NEW APACHE LOT	11		3,996	480		4	24				
ADDITIONAL PARK STRIPING AND SIGNAGE											
		5,567							5		5
TOTAL	42	8,153	7,827	1,880	72	14	84	1	1	7	9

NOTE:
5,567 FT. OF YELLOW SKIPS INCLUDED TO ADD NEW CETER SKIPS
TO ALL PARK ROADS NOT BEING PAVED THAT ARE OVER 18' WIDE

REV. 6-6-2019

MODEL: Default
FILE NAME: P:\18-1009\03\10_CADD\CADD_Sheets\18-1009_Sht_Schedules.dgn



USER NAME = bcd
DESIGNED - BCD
DRAWN - GDC
CHECKED - LDC
DATE - 03/27/2019

DESIGNED - BCD
DRAWN - GDC
CHECKED - LDC
DATE - 03/27/2019

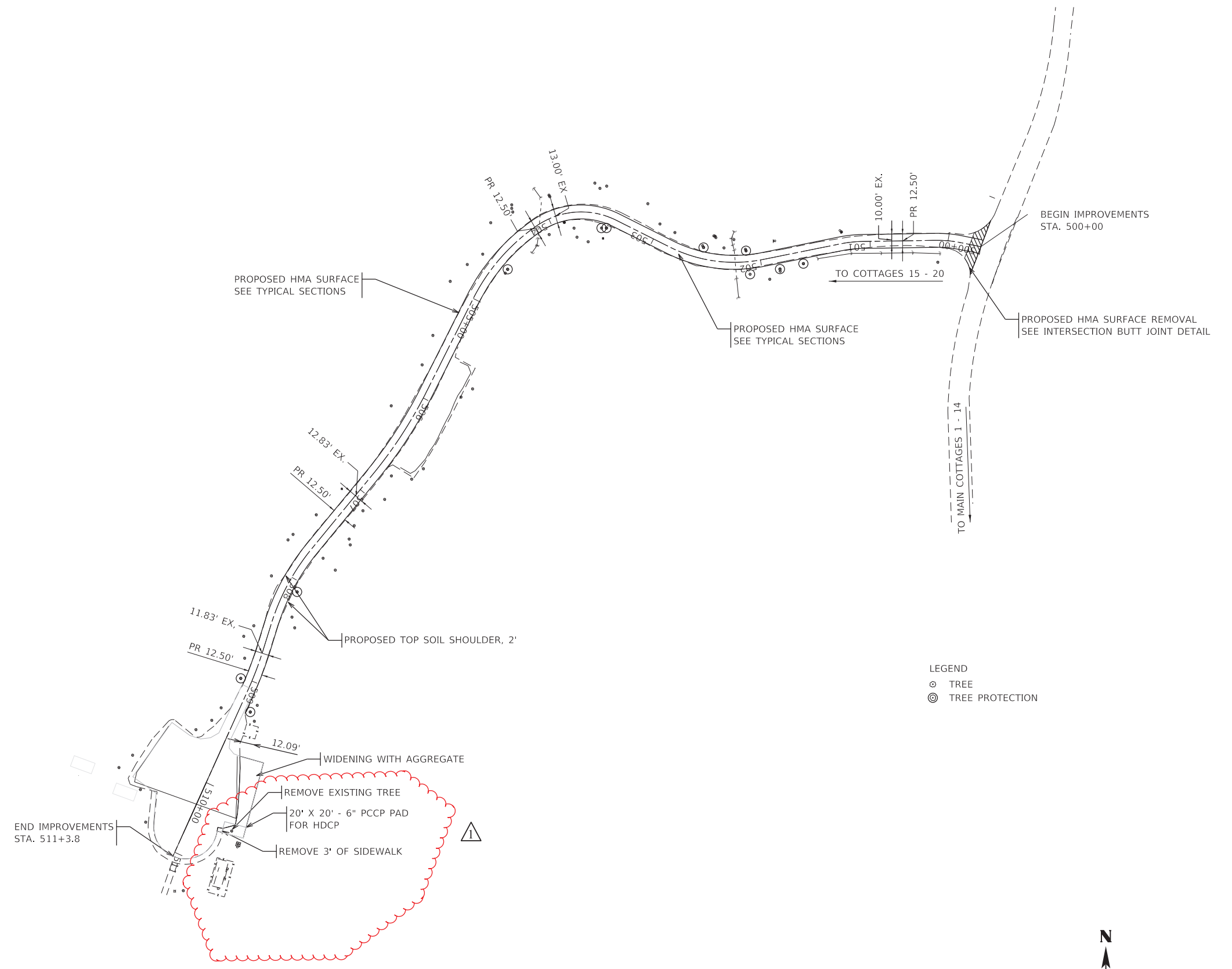
REVISED - 06/05/2019
REVISED -
REVISED -
REVISED -

STATE OF ILLINOIS
DEPARTMENT OF TRANSPORTATION

ELDON HAZLET STATE PARK
SCHEDULES

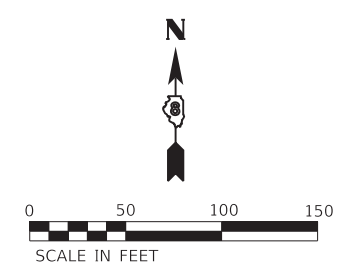
SCALE: SHEET 1 OF 2 SHEETS STA. TO STA.

F.A. RTE.	SECTION	COUNTY	TOTAL SHEETS	SHEET NO.
	ELDON HAZLET 2019	CLINTON	33	9
			CONTRACT NO.46916	
		ILLINOIS	FED. AID PROJECT	



LEGEND
 ⊙ TREE
 ⊗ TREE PROTECTION

△ REV. 6-6-2019



MODEL: Cottages.dwg - Sheet 2
 FILE NAME: P:\1009\03\10_CADD\CADD_Sheets\10-1009_Sht_Cottages02.dwg



USER NAME = gdc	DESIGNED - BCD	REVISED - 06/05/2019
	DRAWN - GDC	REVISED -
PLOT SCALE = 1:50	CHECKED - LDC	REVISED -
PLOT DATE = 6/5/2019	DATE - 03/27/2019	REVISED -

STATE OF ILLINOIS
DEPARTMENT OF TRANSPORTATION

ELDON HAZLET STATE PARK			
COTTAGE ACCESS ROAD			
SCALE: 1"=50'	SHEET 1	OF 1 SHEETS	STA. 500+00 TO STA. 510+52.5

F.A. RTE.	SECTION	COUNTY	TOTAL SHEETS	SHEET NO.
	ELDON HAZLET 2019	CLINTON	33	17
			CONTRACT NO.46916	
		ILLINOIS	FED. AID PROJECT	



YOUTH CAMP ROAD



TRAILHEAD ROAD



COTTAGE ACCESS ROAD

△ REV. 6-6-2019

NOTE:
 REMOVE AND REINSTALL EXISTING
 PARKING BLOCKS

MODEL: Default
 FILE NAME: P:\18-1009\03\10_CADD\CADD_Sheets\18-1009_Sht_Prem\MKg_03.dgn



USER NAME = gdc	DESIGNED - BCD	REVISED - 06/05/2019
PLOT SCALE = 1:50	DRAWN - GDC	REVISED -
PLOT DATE = 6/5/2019	CHECKED - LDC	REVISED -
	DATE - 03/27/2019	REVISED -

**STATE OF ILLINOIS
 DEPARTMENT OF TRANSPORTATION**

**ELDON HAZLET STATE PARK
 PAVEMENT MARKING DETAILS**

SCALE: NTS SHEET 3 OF 4 SHEETS STA. TO STA.

F.A. RTE.	SECTION	COUNTY	TOTAL SHEETS	SHEET NO.
	ELDON HAZLET 2019	CLINTON	33	24
			CONTRACT NO.46916	
		ILLINOIS	FED. AID PROJECT	