

06-14-2019 LETTING ITEM 144

STATE OF ILLINOIS
DEPARTMENT OF TRANSPORTATION

F.A.P. RTE.	SECTION	COUNTY	TOTAL SHEETS	SHEET NO.
670	III BDR, BJR, BRR	MACOUPIN	18	1
CONTRACT NO. 72L23				

FOR INDEX OF SHEETS, SEE SHEET NO. 2

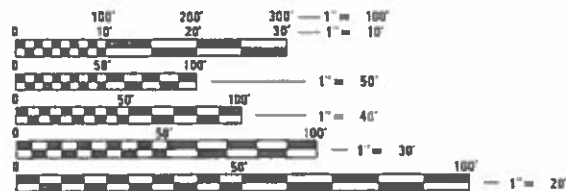
PROPOSED HIGHWAY PLANS

FAP ROUTE 670 (IL 4)
SECTION (J) BDR, BJR, BRR
PROJECT NHPP-5U5L(489)
BRIDGE DECK OVERLAY
MACOUPIN COUNTY

C-96-059-19



PROJECT LOCATION
SN 059-0009
IL 4 OVER UPRR
2 MI N OF STAUNTON



FULL SIZE PLANS HAVE BEEN PREPARED USING STANDARD ENGINEERING SCALES. REDUCED SIZED PLANS WILL NOT CONFORM TO STANDARD SCALES. IN MAKING MEASUREMENTS ON REDUCED PLANS, THE ABOVE SCALES MAY BE USED.

J.U.L.I.E.
JOINT UTILITY LOCATION INFORMATION FOR EXCAVATORS
1-800-892-0123
OR 811

BRIDGE MAINTENANCE ENGINEER: BRANDON DUDLEY - (217) 785-9290

GROSS LENGTH = x.xx FT. = x.xxx MILE
NET LENGTH = x.xx FT. = x.xxx MILE

CONTRACT NO. 72L23

STATE OF ILLINOIS
DEPARTMENT OF TRANSPORTATION

SUBMITTED 20 March 2019

[Signature] REGIONAL ENGINEER

May 10 2019
[Signature] ENGINEER OF DESIGN AND ENVIRONMENT

May 19 2019
[Signature] DIRECTOR OF HIGHWAYS PROJECT IMPLEMENTATION

PRINTED BY THE AUTHORITY
OF THE STATE OF ILLINOIS

INDEX OF SHEETS

- 1 COVER SHEET
- 2 INDEX, STANDARDS, SIGNATURES, GENERAL NOTES, & SCHEDULES
- 3-4 SUMMARY OF QUANTITIES
- 5 TYPICAL SECTIONS
- 6 ROADWAY PLAN
- 7 STAGING PLAN
- 8-9 TRAFFIC CONTROL PLAN
- 10-11 EXISTING INLET DETAILS
- 12-18 SN 059-0009 BRIDGE PLANS

GENERAL NOTES:

AREAS OF DECK REPAIRS SHOW ARE ESTIMATED. THE ENGINEER SHALL SHOW ACTUAL LOCATIONS OF DECK REPAIRS ON AS-BUILT PLANS.

STANDARDS

- 000001-07
- 001001-02
- 001006
- 606101-05
- 701001-02
- 701006-05
- 701201-05
- 701301-04
- 701321-17
- 701901-08
- 704001-08
- 780001-05
- 782006

PAVING SCHEDULE

STA	TO	STA	BIT MATL (TRACK CT) (POUND)	HMA SURF COURSE (TON)
182+32	-	183+78	263	66
186+06	-	187+76	291	73
TOTALS			554	139

PAVEMENT MARKING REMOVAL SCHEDULE

STA	TO	STA	LOC.	LINE TYPE	PAVT MARK REM (SQ FT)
STAGE I					
180+30	-	183+00	℄	DOUBLE SOLID	225
182+00	-	188+00	RT	SOLID	250
186+60	-	189+83	℄	DOUBLE SOLID	269
STAGE II					
182+03	-	184+65	LT	SOLID	109
185+85	-	187+83	LT	SOLID	83
TOTAL					936

STATE OF ILLINOIS
DEPARTMENT OF TRANSPORTATION
DIVISION OF HIGHWAYS
DISTRICT 6

EXAMINED 15 March 20 17
[Signature]
ENGINEER OF OPERATIONS

EXAMINED 20 17
[Signature]
ENGINEER OF PROJECT IMPLEMENTATION

EXAMINED March 15 20 19
[Signature]
ENGINEER OF PROGRAM DEVELOPMENT

MIXTURE USE(S)	HMA SURFACE CSE
AC/PG	PG 64-22
DESIGN AIR Voids	4.0 % NS0
MIX COMPOSITION (GRADATION MIXTURE)	IL-9.5
FRICTION AGGREGATE	MIX "C"
QUALITY MANAGEMENT	OC/OA
SUBLOT SIZE	N/A

USDL: <u>None</u>	DESIGNED: -	REVISED: -
PLOT SCALE = 100.0000' = 1"	DRAWN: -	REVISOR: -
PLOT DATE = 2/19/2019	CHECKED: -	REVISION: -
	DATE: -	

STATE OF ILLINOIS
DEPARTMENT OF TRANSPORTATION

**INDEX, GENERAL NOTES, STANDARDS,
SIGNATURES, & QUANTITY SCHEDULES**

E.A.P. RT#	SECTION	COUNTY	TOTAL SHEETS
670	(1) BRN, BR, BR4	MACOUPIN	18
		CONTRACT NO. 72L23	2
		ILLINOIS FED. AID PROJECT	

6-00492-0000
 SN 059-0009
 80/20 FED/ST

6-00492-0000
 SN 059-0009
 80/20 FED/ST

CODE NO.	ITEM	UNIT	TOTAL QUANTITY	BRIDGE
				0059 MACOUPIN
28100807	STONE DUMPED RIPRAP, CLASS A4	TON	30	30
40600290	BITUMINOUS MATERIALS (TACK COAT)	POUND	554	554
40600982	HOT-MIX ASPHALT SURFACE REMOVAL - BUTT JOINT	SQ YD	756	756
40600990	TEMPORARY RAMP	SQ YD	100	100
40603310	HOT-MIX ASPHALT SURFACE COURSE, MIX "C", N50	TON	139	139
44000400	GUTTER REMOVAL	FOOT	124	124
48102100	AGGREGATE WEDGE SHOULDER, TYPE B	TON	25	25
50157300	PROTECTIVE SHIELD	SQ YD	103	103
50102400	CONCRETE REMOVAL	CU YD	6.6	6.6
50300255	CONCRETE SUPERSTRUCTURE	CU YD	7.6	7.6
50300260	BRIDGE DECK GROOVING	SQ YD	920	920
50300300	PROTECTIVE COAT	SQ YD	989	989
50800205	REINFORCEMENT BARS, EPOXY COATED	POUND	1320	1320
50800515	BAR SPLICERS	EACH	12	12

CODE NO.	ITEM	UNIT	TOTAL QUANTITY	BRIDGE
				0059 MACOUPIN
52000110	PREFORMED JOINT STRIP SEAL	FOOT	120	120
60602500	CONCRETE GUTTER, TYPE A	FOOT	124	124
67000400	ENGINEER'S FIELD OFFICE, TYPE A	CAL MO	6	6
67100100	MOBILIZATION	L SUM	1	1
70100405	TRAFFIC CONTROL AND PROTECTION, STANDARD 701321	EACH	1	1
70100450	TRAFFIC CONTROL AND PROTECTION, STANDARD 701201	L SUM	1	1
70106500	TEMPORARY BRIDGE TRAFFIC SIGNALS	EACH	1	1
70106700	TEMPORARY RUMBLE STRIPS	EACH	6	6
70107025	CHANGEABLE MESSAGE SIGN	CAL DA	120	120
70300100	SHORT TERM PAVEMENT MARKING	FOOT	100	100
70300150	SHORT TERM PAVEMENT MARKING REMOVAL	SQ FT	33	33
70400100	TEMPORARY CONCRETE BARRIER	FOOT	500	500
70400200	RELOCATE TEMPORARY CONCRETE BARRIER	FOOT	450	450
70600260	IMPACT ATTENUATORS, TEMPORARY (FULLY REDIRECTIVE, NARROW), TEST LEVEL 3	EACH	2	2

MODEL: Default
 FILE NAME: C:\OPERATIONS\Bridges\BridgesPlans_CAD\172XXX - 0530009_overlay\plan\sheet.dgn

REV. - MS

USER NAME = dudleybm	DESIGNED -	REVISED -
DRAWN -	REVISOR -	
PLOT SCALE = 100.0000' / in.	CHECKED -	REVISOR -
PLOT DATE = 3/19/2019	DATE -	REVISOR -

**STATE OF ILLINOIS
 DEPARTMENT OF TRANSPORTATION**

SUMMARY OF QUANTITIES

SCALE: SHEET OF SHEETS STA. TO STA.

F.A.P. RTE.	SECTION	COUNTY	TOTAL SHEETS	SHEET NO.
670	(J) BDR, BJR, BRR	MACOUPIN	18	3
CONTRACT NO. 72L23			ILLINOIS FED. AID PROJECT	

6-00492-0000
 SN 059-0009
 80/20 FED/ST

CODE NO.	ITEM	UNIT	TOTAL QUANTITY	BRIDGE
				0059 MACOUPIN
70600332	IMPACT ATTENUATORS, RELOCATE (FULLY REDIRECTIVE, NARROW), TEST LEVEL 3	EACH	2	2
* 78001120	PAINT PAVEMENT MARKING - LINE 5"	FOOT	4000	4000
78300200	RAISED REFLECTIVE PAVEMENT MARKER REMOVAL	EACH	4	4
X0327979	PAVEMENT MARKING REMOVAL - GRINDING	SQ FT	936	936
X6030205	FRAMES AND GRATES TO BE ADJUSTED (SPECIAL)	EACH	4	4
X7200201	WIDTH RESTRICTION SIGNING	L SUM	1	1
Z0001800	APPROACH SLAB REPAIR (PARTIAL DEPTH)	SQ YD	5	5
Z0012130	BRIDGE DECK SCARIFICATION, 3/4"	SQ YD	970	970
Z0012164	BRIDGE DECK MICROSILICA CONCRETE OVERLAY, 2-1/2"	SQ YD	970	970
Z0012754	STRUCTURAL REPAIR OF CONCRETE (DEPTH EQUAL TO OR LESS THAN 5 INCHES)	SQ FT	15	15
Z0016002	DECK SLAB REPAIR (FULL DEPTH, TYPE II)	SQ YD	50	50
Z0018051	DRAINAGE SCUPPERS TO BE ADJUSTED	EACH	4	4
Z0048665	RAILROAD PROTECTIVE LIABILITY INSURANCE	L SUM	1	1

* SPECIALTY ITEM

MODEL: Default
 FILE: \\nas101.csc.cop.state.il.us\bridge\bridgeplans_CAD\1723XX - 0590009_overby\plan\sheet.dgn

USER NAME = dudleybm	DESIGNED -	REVISED -
	DRAWN -	REVISED -
PLOT SCALE = 100.0000 ' / in.	CHECKED -	REVISED -
PLOT DATE = 3/19/2019	DATE -	REVISED -

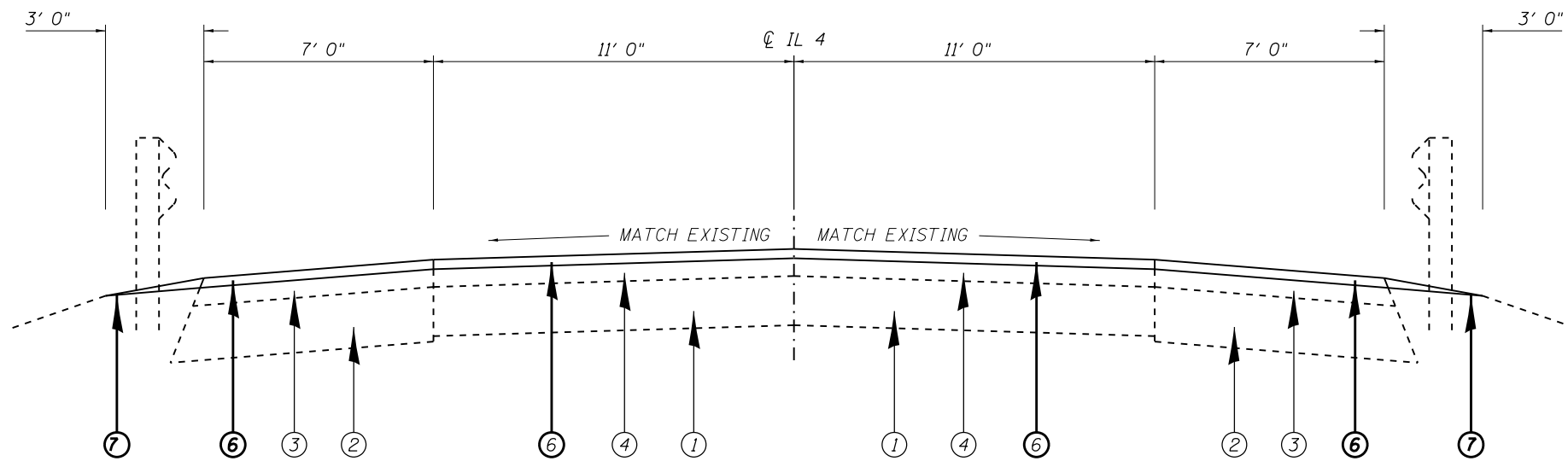
**STATE OF ILLINOIS
 DEPARTMENT OF TRANSPORTATION**

SUMMARY OF QUANTITIES

SCALE: SHEET OF SHEETS STA. TO STA.

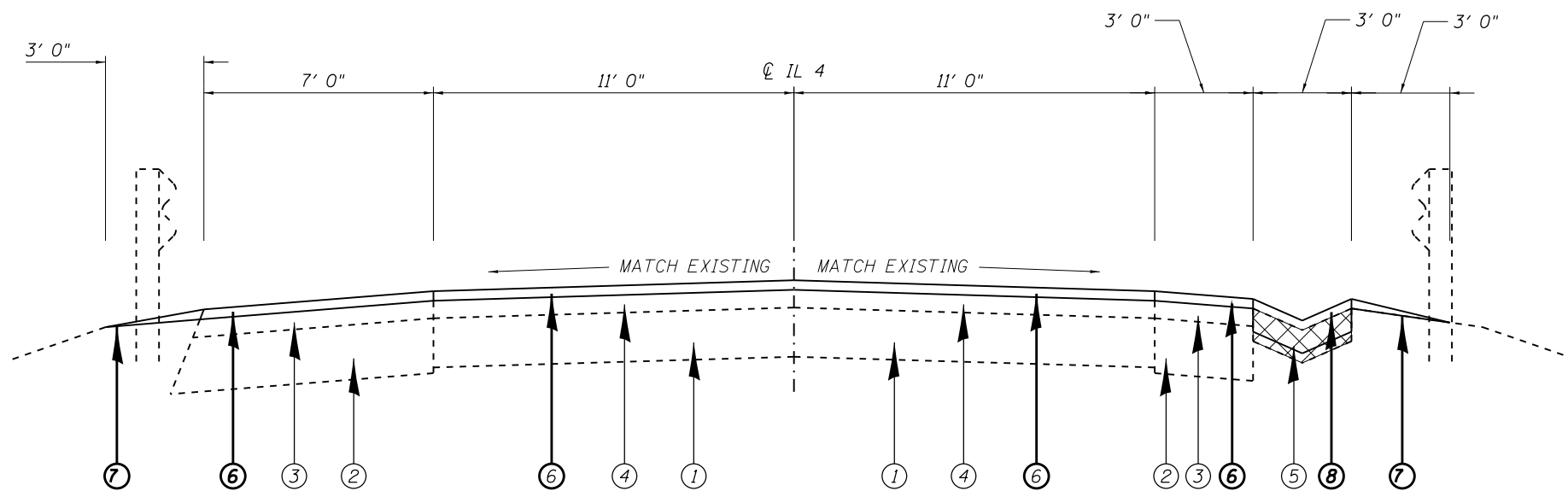
F.A.P. RTE.	SECTION	COUNTY	TOTAL SHEETS	SHEET NO.
670	(J) BDR, BJR, BRR	MACOUPIN	18	4
CONTRACT NO. 72L23			ILLINOIS FED. AID PROJECT	

REV. - MS



STA 182+32 TO STA 183+48*

- ① EXISTING PCC PAVEMENT, 9"
- ② EXISTING BASE COURSE WIDENING, 10"
- ③ EXISTING HMA SHOULDER, ±3-1/4"
- ④ EXISTING HMA OVERLAY, ±3-1/4"
- ⑤ EXISTING PCC GUTTER
- ⑥ PROPOSED HMA SURFACE COURSE, 1-3/4"
- ⑦ PROPOSED AGGRAGATE WEDGE SHOULDER - TYPE B
- ⑧ PROPOSED CONCRETE GUTTER, TYPE A



STA 186+36* TO STA 187+76

* STA 183+48 TO STA 186+36 = SN 059-0009 AND APPROACHES

NOTE:

NEW TYPE A GUTTER SHALL BE PLACED DURING STAGE II. FINISH GRADE SHALL BE 1-3/4" ABOVE THE EXISTING PAVEMENT AND 1-3/4" ABOVE THE MILLED SURFACE WITHIN THE BUTT JOINT AREA. ANY GRADING NECESSARY PRIOR TO PLACING THE NEW GUTTER SHALL BE ACCOMPLISHED USING COMPACTED ROCK OR SAND TO THE SATISFACTION OF THE ENGINEER. GRADING AND MATERIAL PLACEMENT FOR GRADING SHALL BE CONSIDERED INCIDENTAL TO THE CONCRETE GUTTER PAY ITEM AND SHALL NOT BE MEASURED FOR PAYMENT SEPARATELY.

MODEL: Default
FILE: \\nas01.csc.cpep.state.il.us\projects\bridge\bridgeplans_CAD\1723XX - 0590009_overby\plan\sheet.dgn

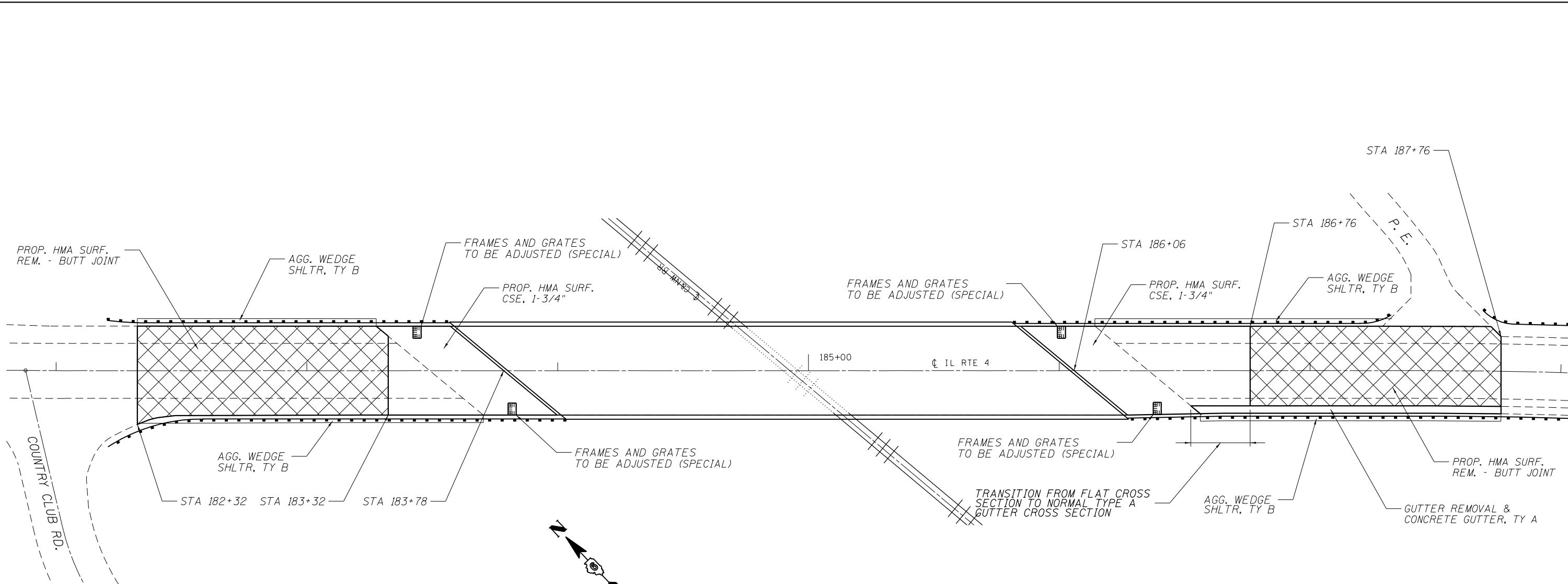
USER NAME = dudleybm	DESIGNED -	REVISED -
	DRAWN -	REVISED -
PLOT SCALE = 100.0000' / in.	CHECKED -	REVISED -
PLOT DATE = 3/19/2019	DATE -	REVISED -

STATE OF ILLINOIS
DEPARTMENT OF TRANSPORTATION

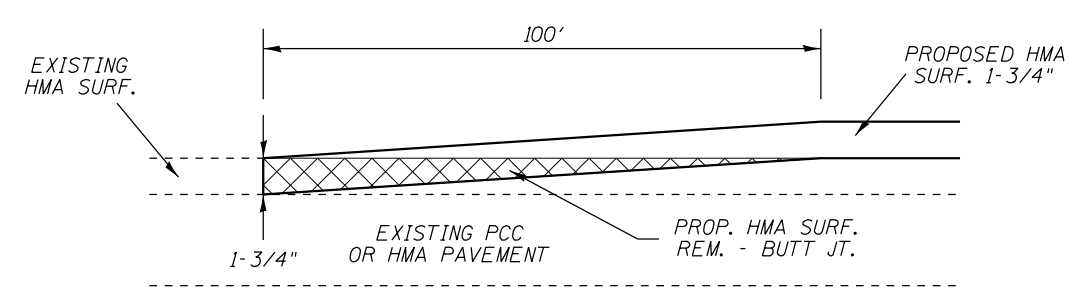
TYPICAL CROSS SECTIONS

SCALE: SHEET OF SHEETS STA. TO STA.

F.A.P. RTE.	SECTION	COUNTY	TOTAL SHEETS	SHEET NO.
670	(J) BDR, BJR, BRR	MACOUPIN	18	5
CONTRACT NO. 72L23				
ILLINOIS FED. AID PROJECT				



ROADWAY PLAN



BUTT JOINT ELEVATION

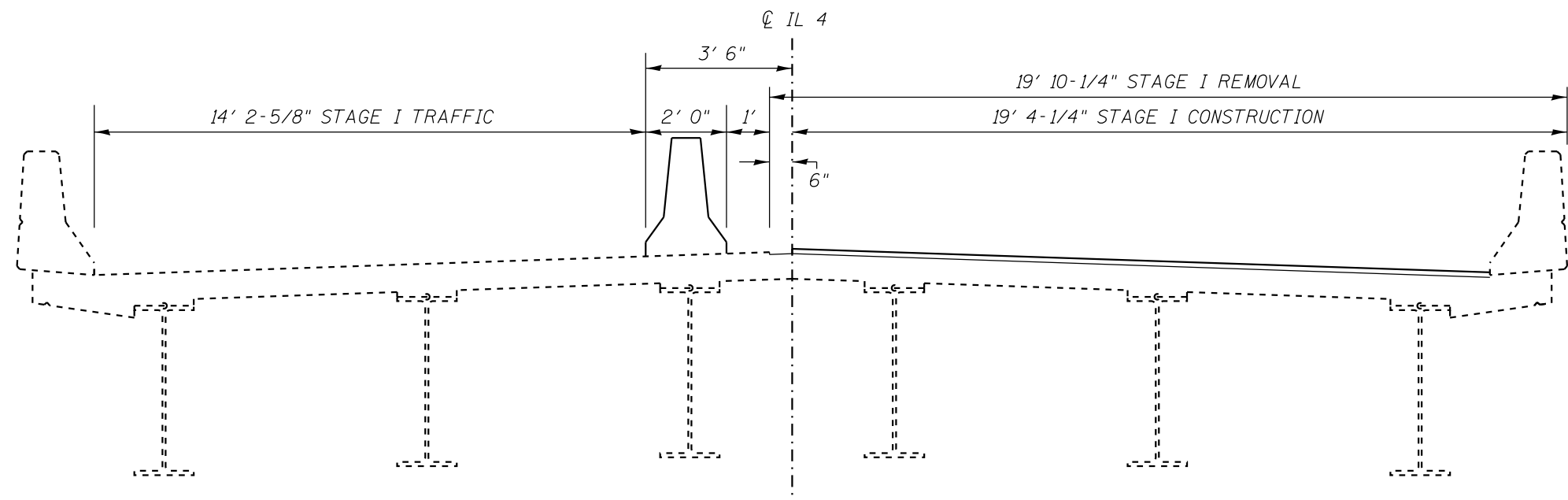
MODEL: Default
 FILE: \\nas01.csc.state.il.us\projects\bridge\bridgeplans_CAD\72L23\XX - 05900009_overby\plan\sheet.dgn

USER NAME = dudleybm	DESIGNED -	REVISED -
	DRAWN -	REVISED -
PLOT SCALE = 100,0000' / in.	CHECKED -	REVISED -
PLOT DATE = 3/19/2019	DATE -	REVISED -

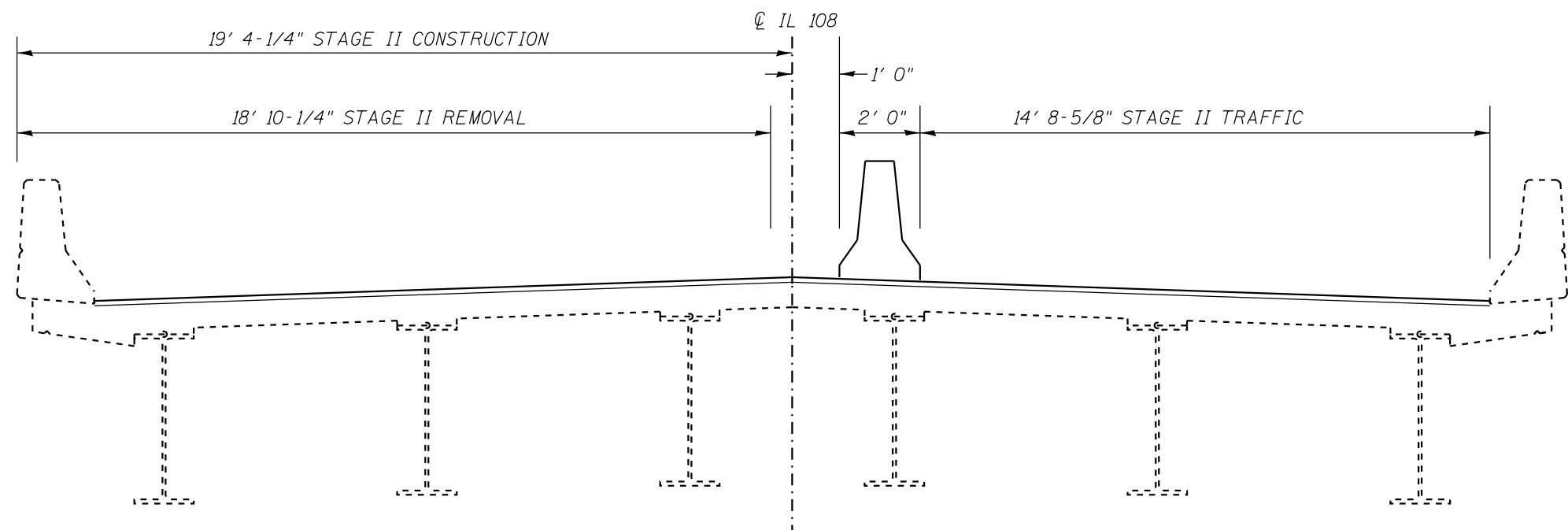
STATE OF ILLINOIS
DEPARTMENT OF TRANSPORTATION

ROADWAY PLAN				
SCALE:	SHEET	OF	SHEETS	STA. TO STA.

F.A.P. RTE.	SECTION	COUNTY	TOTAL SHEETS	SHEET NO.
670	(J) BDR, BJR, BRR	MACOUPIN	18	6
CONTRACT NO. 72L23				
		ILLINOIS	FED. AID PROJECT	



STAGE I CROSS SECTION (LOOKING NORTH)



STAGE II CROSS SECTION (LOOKING NORTH)

MODEL: Default
 FILE: \\MAILS-C01\OPERATIONS\Bridges\Bridges\plans_CAD\72L23X - 05200009_overby\planstsheet.dgn

USER NAME = dudleybm	DESIGNED -	REVISED -
	DRAWN -	REVISED -
PLOT SCALE = 100.0000' / in.	CHECKED -	REVISED -
PLOT DATE = 3/19/2019	DATE -	REVISED -

**STATE OF ILLINOIS
DEPARTMENT OF TRANSPORTATION**

TRAFFIC STAGING PLAN

SCALE: SHEET OF SHEETS STA. TO STA.

F.A.P. RTE.	SECTION	COUNTY	TOTAL SHEETS	SHEET NO.
670	(J) BDR, BJR, BRR	MACOUPIN	18	7
CONTRACT NO. 72L23				
ILLINOIS FED. AID PROJECT				



R3-2-30

F. E.

STA 180+90
12' LT

STA 182+20
3' LT

STA 183+00
3.5' RT

180+00

185+00

STA 180+30

STA 180+80

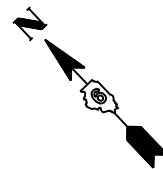
COUNTRY CLUB RD.

STA 182+50
4' RT

STA 182+50
16' RT

TEMPORARY PAVT.
MARKING TAPE

ADVANCE WARNING
PER STD. 701321



STA 187+00
1.5' LT

STA 186+60
3.5' RT

STA 189+00
12' LT

STA 189+83

ADVANCE WARNING
PER STD. 701321

185+00

IL RTE 4

1:8

190+00

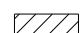



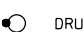
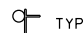
STA 187+10
4' RT

STA 187+10
16' RT

STA 187+95

STA 188+00
12' RT

SYMBOLS

-  WORK AREA
-  SIGN
-  IMPACT ATTENUATOR
-  TRAFFIC SIGNAL
-  DRUM WITH STEADY BURNING LIGHT
-  TYPE III BARRICADE WITH FLASHING LIGHTS

TRAFFIC CONTROL NOTES:

1. TRAFFIC CONTROL DEVICES NOT SHOWN IN THIS DETAIL SHALL BE PER STANDARD 701321. DEVICES AND TEMPORARY PAVEMENT MARKINGS SHOWN IN THIS DETAIL SHALL BE INCLUDED IN THE COST OF TRAFFIC CONTROL AND PROTECTION, STANDARD 701321. IMPACT ATTENUATORS, RUMBLE STRIPS, AND TEMPORARY TRAFFIC SIGNALS SHALL BE PAID SEPARATELY.
2. ALL EXISTING STOP SIGNS INSIDE THE WORK ZONE SHALL BE COVERED WHILE TRAFFIC SIGNALS ARE ACTIVE.
3. STOP BARS SHOWN SHALL BE 24" WIDE.
4. TEMPORARY CONCRETE BARRIER OFFSETS GIVEN IN THIS DETAIL REFER TO THE EDGE OF THE BARRIER NEAREST TO LIVE TRAFFIC.

MODEL: Default
FILE: \\nas01.csc.state.il.us\projects\Bdr\Bdr\plans_CAD\72L23X - 0590009_overby\Bdr\sheet.dgn

USER NAME = dudleybm	DESIGNED -	REVISED -
PLOT SCALE = 100.0000' / in.	DRAWN -	REVISED -
PLOT DATE = 3/19/2019	CHECKED -	REVISED -
	DATE -	REVISED -

**STATE OF ILLINOIS
DEPARTMENT OF TRANSPORTATION**

STAGE I TRAFFIC CONTROL

SCALE: SHEET OF SHEETS STA. TO STA.

F.A.P. RTE.	SECTION	COUNTY	TOTAL SHEETS	SHEET NO.
670	(J) BDR, BJR, BRR	MACOUPIN	18	8
ILLINOIS FED. AID PROJECT			CONTRACT NO. 72L23	



R3-2-30

F. E.

STA 182+03
12' LT

STA 182+73
15.5' LT

STA 182+73
3.5' LT

TEMPORARY PAVT.
MARKING TAPE

180+00

185+00

STA 180+30

STA 180+80

STA 180+80
12' RT

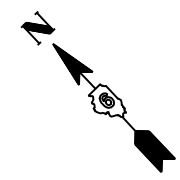
COUNTRY CLUB RD.

STA 183+53
2.5' RT

STA 184+23
3' LT

ADVANCE WARNING
PER STD. 701321

50'



STA 187+33
15.5' LT

STA 187+33
3.5' LT

P. E.

STA 189+33

STA 189+83

ADVANCE WARNING
PER STD. 701321

185+00




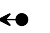


190+00

STA 186+83
3' LT

STA 187+83
5' RT

STA 189+23
12' RT

SYMBOLS

-  WORK AREA
-  SIGN
-  IMPACT ATTENUATOR
-  TRAFFIC SIGNAL
-  DRUM WITH STEADY BURNING LIGHT
-  TYPE III BARRICADE WITH FLASHING LIGHTS

TRAFFIC CONTROL NOTES:

1. TRAFFIC CONTROL DEVICES NOT SHOWN IN THIS DETAIL SHALL BE PER STANDARD 701321. DEVICES AND TEMPORARY PAVEMENT MARKINGS SHOWN IN THIS DETAIL SHALL BE INCLUDED IN THE COST OF TRAFFIC CONTROL AND PROTECTION, STANDARD 701321. IMPACT ATTENUATORS, RUMBLE STRIPS, AND TEMPORARY TRAFFIC SIGNALS SHALL BE PAID SEPARATELY.
2. ALL EXISTING STOP SIGNS INSIDE THE WORK ZONE SHALL BE COVERED WHILE TRAFFIC SIGNALS ARE ACTIVE.
3. STOP BARS SHOWN SHALL BE 24" WIDE.
4. TEMPORARY CONCRETE BARRIER OFFSETS GIVEN IN THIS DETAIL REFER TO THE EDGE OF THE BARRIER NEAREST TO LIVE TRAFFIC.

MODEL: Default
FILE: \\mhc\c\OPERATIONS\Bridges\Bridges\plans_CAD\72L23X - 0590009_overby\stb\sheet.dgn

USER NAME = dudleybm	DESIGNED -	REVISED -
PLOT SCALE = 100.0000' / in.	DRAWN -	REVISED -
PLOT DATE = 3/19/2019	CHECKED -	REVISED -
	DATE -	REVISED -

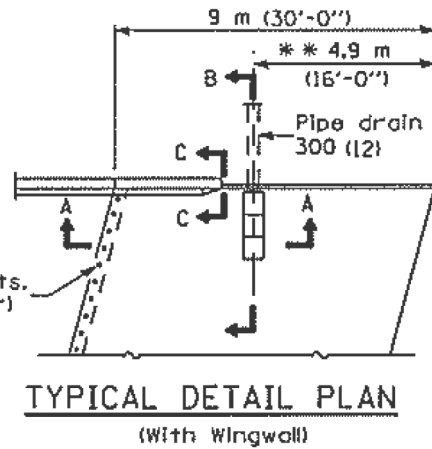
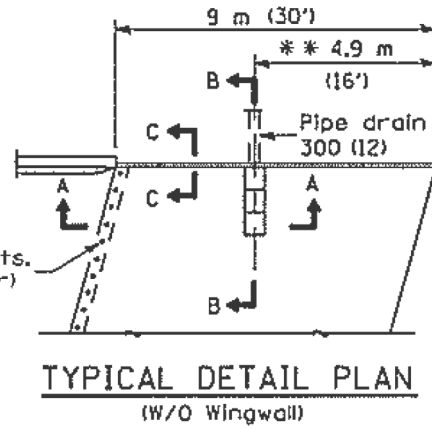
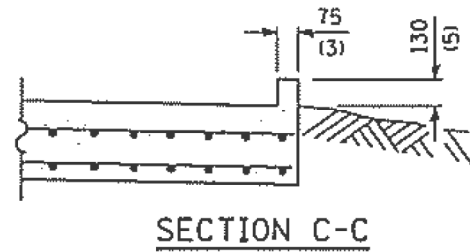
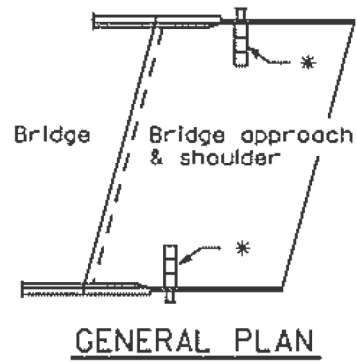
**STATE OF ILLINOIS
DEPARTMENT OF TRANSPORTATION**

STAGE II TRAFFIC CONTROL

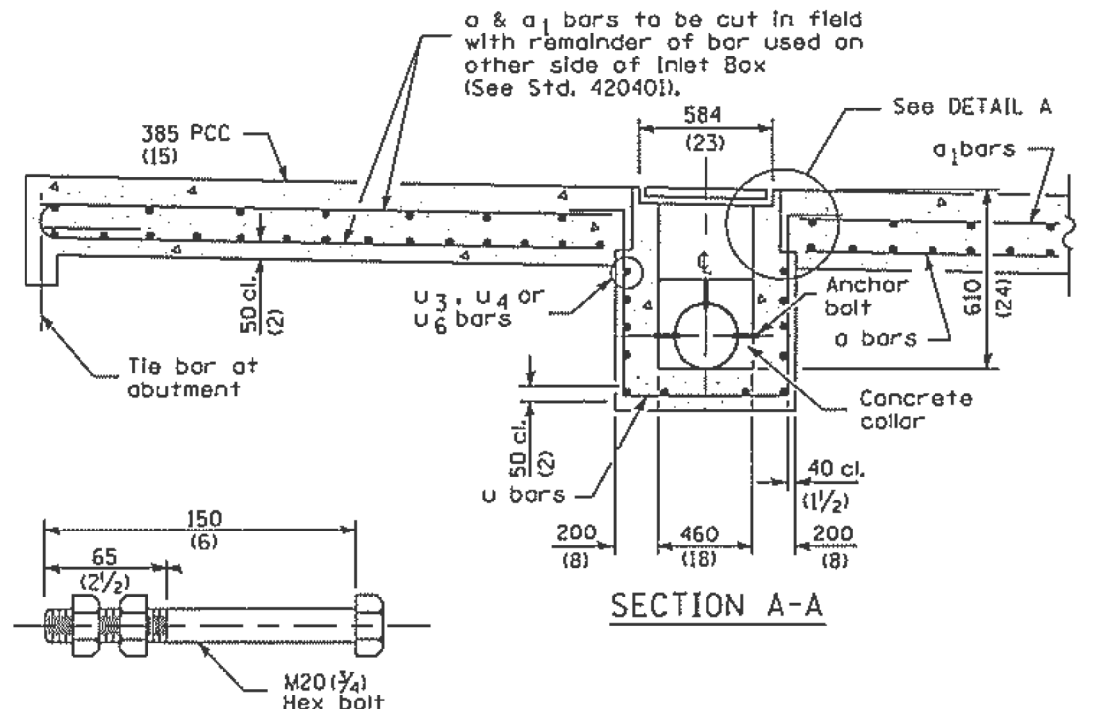
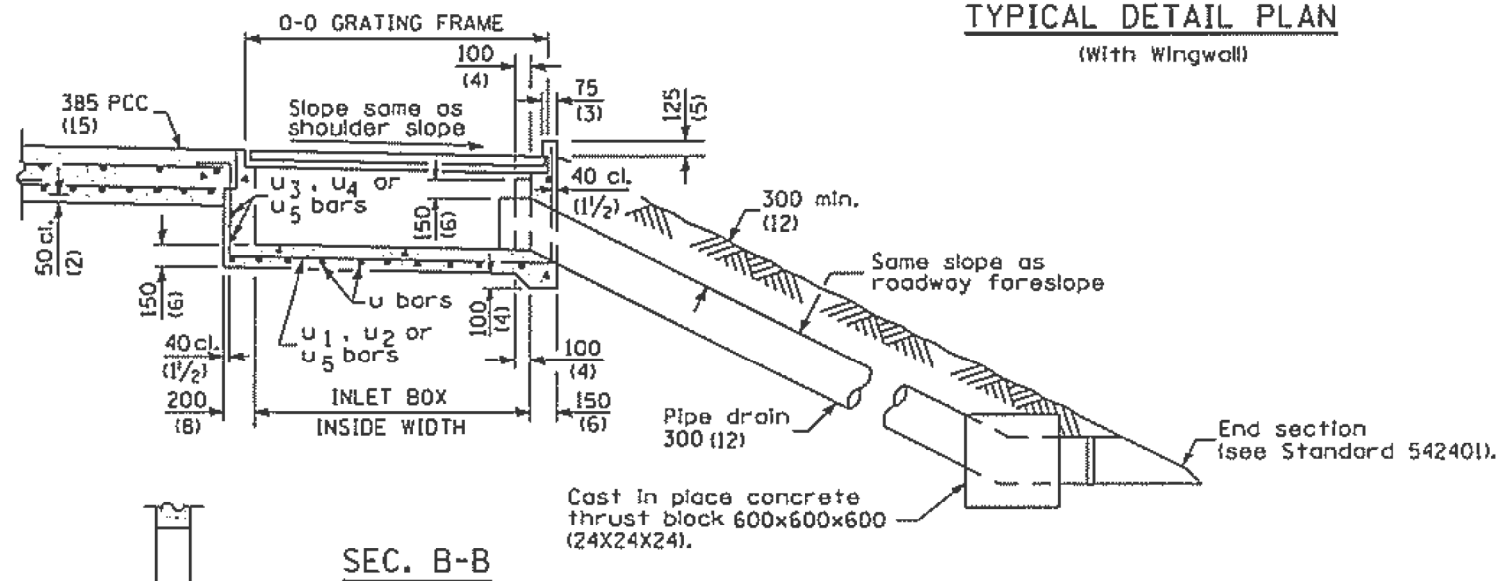
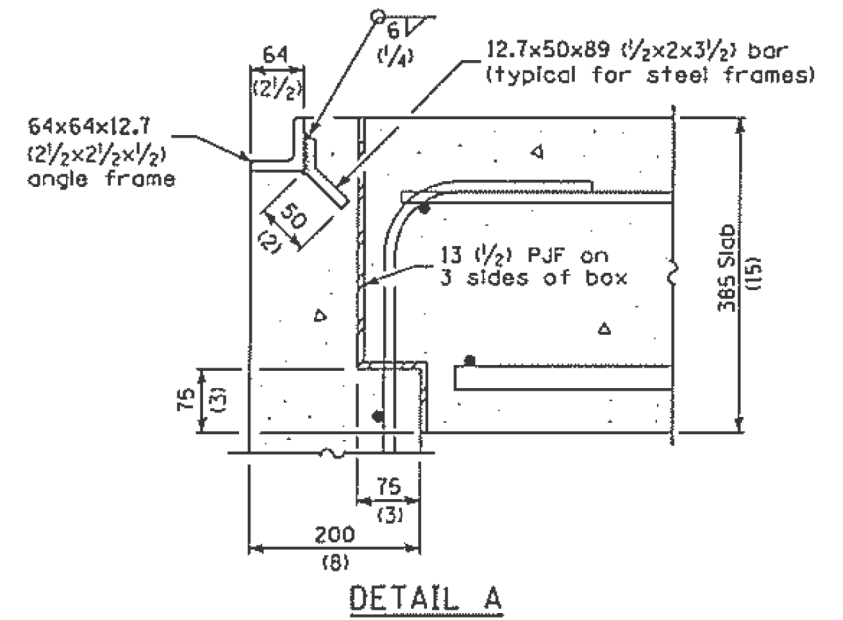
SCALE: SHEET OF SHEETS STA. TO STA.

F.A.P. RTE.	SECTION	COUNTY	TOTAL SHEETS	SHEET NO.
670	(J) BDR, BJR, BRR	MACOUPIN	18	9
ILLINOIS FED. AID PROJECT			CONTRACT NO. 72L23	

* Type B, C, or D inlet box as required.



** Vary this dimension as needed to position the Inlet Box and Pipe Drain between the proposed approach guardrail posts.



ANCHOR BOLT
(Used to tie pipe to concrete collar)

GENERAL NOTES
All exposed edges of the inlet, except the upper perimeter, shall be beveled 20 mm (3/4").
All dimensions are in millimeters (inches) unless otherwise shown.

BOX OUTLET WHEN PRECAST

INLET TYPE	SHOULDER WIDTH	O-O GRATING FRAME	INLET BOX INSIDE WIDTH	INLET BOX INSIDE LENGTH
Type B	Less than 1.5 m (5')	0.690 m (2'-3")	0.560 m (1'-10")	460 (18)
Type C	1.5 - 1.8 m (5' - 6')	1.325 m (4'-4")	1.195 m (3'-11")	460 (18)
Type D	Greater than 1.8 m (6')	1.960 m (6'-5")	1.830 m (6'-0")	460 (18)

Illinois Department of Transportation
 PASSED January 1, 2007
 ENGINEER OF POLICY AND PROCEDURES
 APPROVED January 1, 2007
 ENGINEER OF DESIGN AND ENVIRONMENT

DATE	REVISIONS
1-1-07	Soft converted metric reinforcement bars.
1-1-02	Deleted "Metal" from Section B-B.

BRIDGE APPROACH PAVEMENT (DRAIN DETAIL)
(Sheet 1 of 2)
STANDARD 609006-03

MODEL: Default; FILE NAME: C:\OPERATIONS\bridge\bridge\plans_CAD\72L23X - 0590009.dwg; OVERBY: bbrhstret.dgn

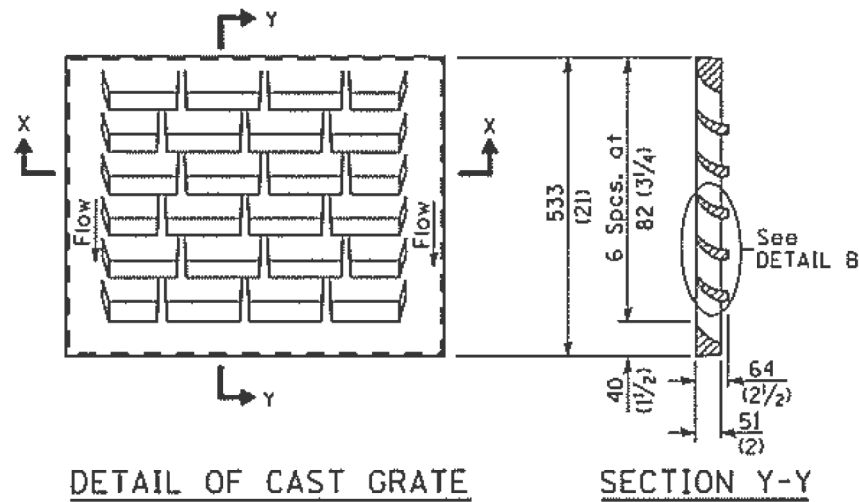
USER NAME = dudleybm	DESIGNED -	REVISED -
	DRAWN -	REVISED -
PLOT SCALE = 100,0000' / in.	CHECKED -	REVISED -
PLOT DATE = 3/19/2019	DATE -	REVISED -

STATE OF ILLINOIS DEPARTMENT OF TRANSPORTATION

EXISTING INLET DETAILS (FOR INFORMATION ONLY)

SCALE: SHEET OF SHEETS STA. TO STA.

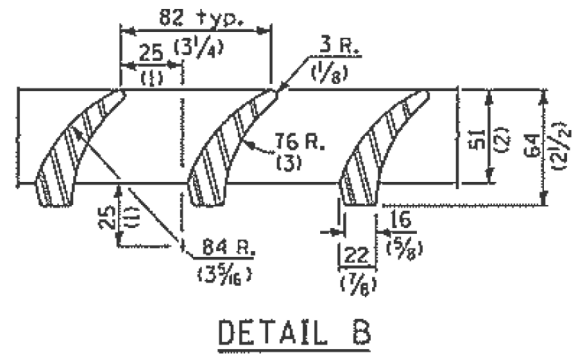
F.A.P. RTE.	SECTION	COUNTY	TOTAL SHEETS	SHEET NO.
670	(J) BDR, BJR, BRR	MACOUPIN	18	10
CONTRACT NO. 72L23				
ILLINOIS FED. AID PROJECT				



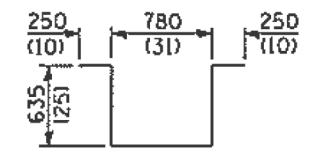
DETAIL OF CAST GRATE

Type B requires 1 grate
 Type C requires 2 grates
 Type D requires 3 grates

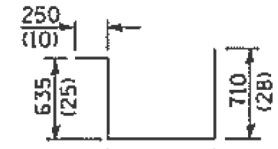
SECTION Y-Y



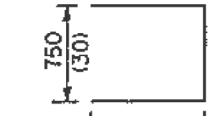
DETAIL B



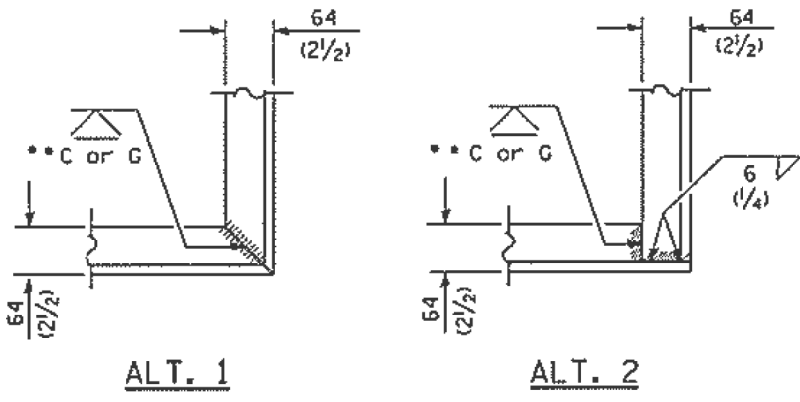
BAR U



BARS U₁, U₂ & U₅

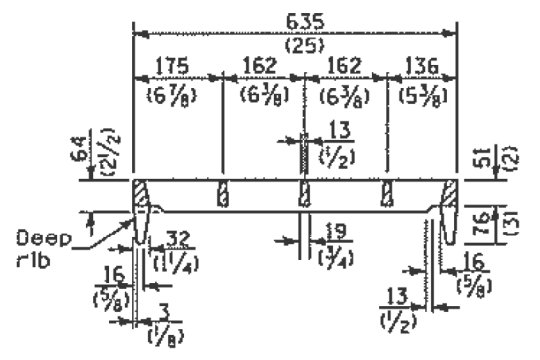


BARS U₃, U₄ & U₆



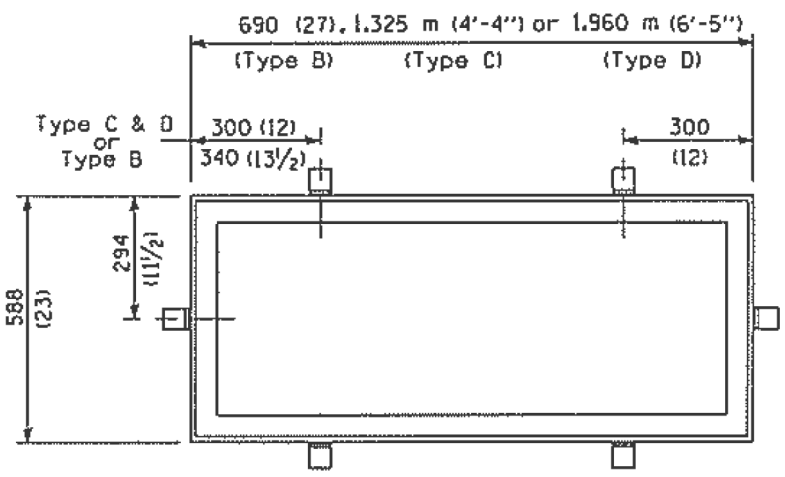
TYPICAL CORNER OF STEEL GRATING FRAME

* * Cut or Grind flush



SECTION X-X

(Deep rib shall be omitted for end(s) resting on frame perimeter)



DETAIL OF STEEL FRAME

Cast frame to have same basic dimensions.

REQUIRED MATERIAL			
TYPE B			
Bar	Qty.	Size	Length
u	4	No. 13 (No.4)	2,550 m (8'-5")
u ₅	3	No. 13 (No.4)	2,425 m (8'-0")
u ₆	4	No. 13 (No.4)	1,870 m (6'-2")
Concrete	m ³ (cu. yds.)		0.4 (0.5)
Reinf. bars	kg (lbs.)		25.0 (55.0)
Grating	m ² (sq. ft.)		0.34 (3.6)
TYPE C			
Bar	Qty.	Size	Length
u	6	No. 13 (No.4)	2,550 m (8'-5")
u ₂	3	No. 13 (No.4)	3,060 m (10'-1")
u ₄	4	No. 13 (No.4)	2,530 m (8'-4")
Concrete	m ³ (cu. yds.)		0.6 (0.8)
Reinf. bars	kg (lbs.)		34.5 (76)
Grating	m ² (sq. ft.)		0.68 (7.3)
TYPE D			
Bar	Qty.	Size	Length
u	8	No. 13 (No.4)	2,550 m (8'-5")
u ₁	3	No. 13 (No.4)	3,695 m (12'-2")
u ₃	4	No. 13 (No.4)	3,150 m (10'-4")
Concrete	m ³ (cu. yds.)		0.8 (1.1)
Reinf. bars	kg (lbs.)		44.0 (97.0)
Grating	m ² (sq. ft.)		1.02 (10.9)

All dimensions are in millimeters (inches) unless otherwise shown.

BRIDGE APPROACH PAVEMENT (DRAIN DETAIL)
 (Sheet 2 of 2)
STANDARD 609006-03

Illinois Department of Transportation
 PASSED January 1, 2007
 ENGINEER OF POLICY AND PROCEDURES
 APPROVED January 1, 2007
 ENGINEER OF DESIGN AND ENVIRONMENT

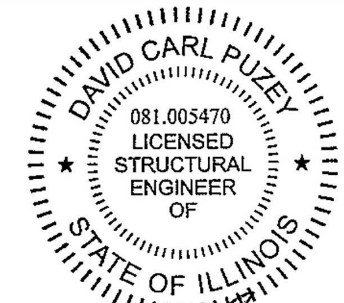
USER NAME = dudleybm	DESIGNED -	REVISED -
	DRAWN -	REVISED -
PLOT SCALE = 100,0000' / in.	CHECKED -	REVISED -
PLOT DATE = 3/19/2019	DATE -	REVISED -

STATE OF ILLINOIS DEPARTMENT OF TRANSPORTATION

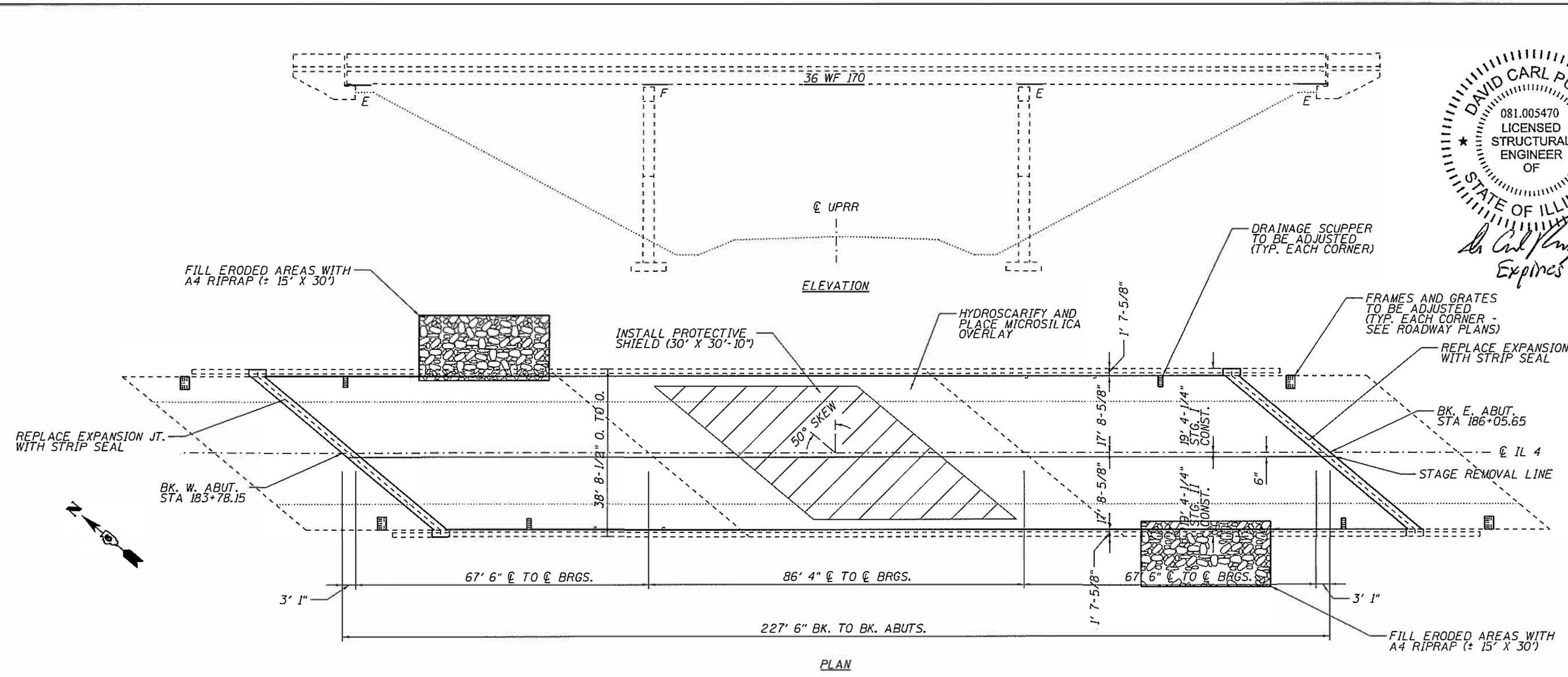
EXISTING INLET DETAILS (FOR INFORMATION ONLY)			
SCALE:	SHEET	OF SHEETS	STA. TO STA.

F.A.P. RTE.	SECTION	COUNTY	TOTAL SHEETS	SHEET NO.
670	(J) BDR, BJR, BRR	MACOUPIN	18	11
CONTRACT NO. 72L23			ILLINOIS FED. AID PROJECT	

MODEL Defaul... FILE NAME: C:\OPERATIONS\Bridges\Bridges\Bridges_CAD\72L23.XX - 0590009.dwg over by subinstruct.dwg



David Carl Puzey 5/9/19
Expires 11/30/20



STRUCTURE GENERAL NOTES:

- SYNTHETIC FIBERS SHALL BE ADDED TO THE BRIDGE DECK MICROSILICA CONCRETE OVERLAY. SEE SPECIAL PROVISIONS.
- ALL STRUCTURAL STEEL SHALL BE AASHTO M-270 GRADE 36, UNLESS OTHERWISE NOTED.
- REINFORCEMENT BARS DESIGNATED (E) SHALL BE EPOXY COATED.
- PRIOR TO POURING THE NEW CONCRETE DECK, ALL HEAVY OR LOOSE MILL SCALE AND OTHER LOOSE OR POTENTIALLY DETRIMENTAL FOREIGN MATERIAL SHALL BE REMOVED FROM THE SURFACES IN CONTACT WITH CONCRETE. TIGHTLY ADHERED PAINT MAY REMAIN UNLESS OTHERWISE NOTED. REMOVAL SHALL BE ACCOMPLISHED BY METHODS THAT WILL NOT DAMAGE THE STEEL AND THE COST WILL BE INCLUDED IN CONCRETE REMOVAL.
- PLAN DIMENSIONS AND DETAILS RELATIVE TO EXISTING PLANS ARE SUBJECT TO NOMINAL CONSTRUCTION VARIATIONS. THE CONTRACTOR SHALL FIELD VERIFY EXISTING DIMENSIONS AND DETAILS AFFECTING NEW CONSTRUCTION AND MAKE NECESSARY APPROVED ADJUSTMENTS PRIOR TO CONSTRUCTION OR ORDERING OF MATERIALS. SUCH VARIATIONS SHALL NOT BE CAUSE FOR ADDITIONAL COMPENSATION FOR A CHANGE IN THE SCOPE OF WORK. HOWEVER, THE CONTRACTOR WILL BE PAID FOR THE QUANTITY ACTUALLY FURNISHED AT THE UNIT PRICE BID FOR THE WORK.
- EXISTING REINFORCEMENT BARS EXTENDING INTO THE REMOVAL AREA SHALL BE CLEANED, STRAIGHTENED, AND INCORPORATED INTO THE NEW CONSTRUCTION. ANY REINFORCEMENT BARS THAT ARE DAMAGED DURING CONCRETE REMOVAL SHALL BE REPLACED WITH AN APPROVED BAR SPLICER OR ANCHORAGE SYSTEM. COST INCLUDED WITH CONCRETE REMOVAL.
- JOINT OPENINGS SHALL BE ADJUSTED ACCORDING TO ARTICLE 520.04 OF THE STANDARD SPECIFICATIONS WHEN THE DECK IS POURED AT AN AMBIENT TEMPERATURE OTHER THAN 50°F.
- THE ABUTMENT AND DECK SURFACES IN THE AREAS OF EXPANSION JOINT REPLACEMENT SHALL HAVE A TINED FINISH AS PER ARTICLE 420.09(e)(1) OF THE STANDARD SPECIFICATIONS. COST INCLUDED WITH CONCRETE SUPERSTRUCTURE.
- PROTECTIVE COAT SHALL BE APPLIED TO NEW CONCRETE ON THE DECK AND PARAPETS ADJACENT TO THE PROPOSED EXPANSION JOINTS AND THE MICROSILICA OVERLAY.
- RIPRAP SHALL BE USED TO FILL ERODED AREAS AS SHOWN IN THE PLANS. EXCAVATION FOR RIPRAP, FILTER FABRIC, AND BEDDING MATERIAL WILL NOT BE REQUIRED.
- THE ACTUAL GRATE TYPE AND BOLT SPACINGS ON EXISTING DRAINAGE SCUPPERS VARY FROM THOSE SHOWN ON EXISTING PLANS. THE CONTRACTOR SHALL FIELD VERIFY ALL DIMENSIONS.

TOTAL BILL OF MATERIAL (059-0009)

ITEM	UNIT	QUANTITY
Concrete Removal	Cu. Yd.	6.6
Concrete Superstructure	Cu. Yd.	7.6
Protective Shield	Sq. Yd.	103
Bridge Deck Grooving	Sq. Yd.	920
Reinforcement Bars, Epoxy Coated	Pound	1320
Bar Splicers	Each	12
Preformed Joint Strip Seal	Foot	120
Bridge Deck Scarification, 3/4"	Sq. Yd.	970
Bridge Deck Microsilica Concrete Overlay, 2-1/2"	Sq. Yd.	970
Deck Slab Repair (Full Depth, Type II)	Sq. Yd.	50
Approach Slab Repair (Partial Depth)	Sq. Yd.	5
Protective Coat	Sq. Yd.	989
Drainage Scuppers To Be Adjusted	Each	4
Structural Repair of Concrete (Depth Equal to or Less Than 5 Inches)	Sq. Ft.	15
Stone Dumped Riprap, Class A4	Ton	30

REV. - MS

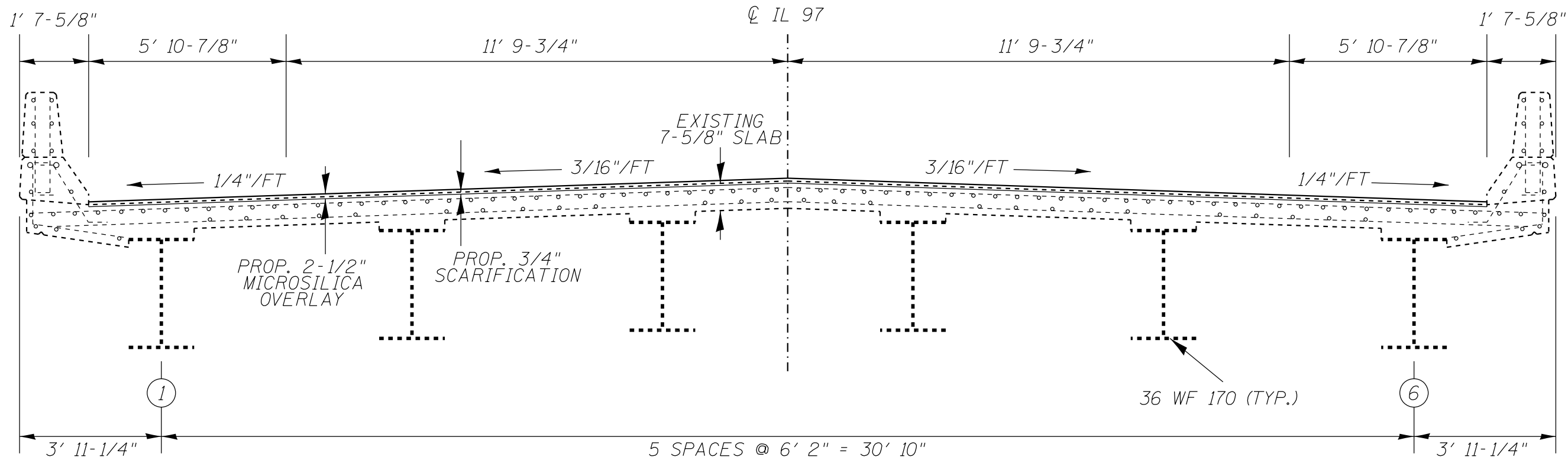
MODEL: D:\dwg\059-0009\059-0009.dwg
FILE NAME: 059-0009\059-0009.dwg
DATE: 3/19/2019

USER NAME = dudleybm	DESIGNED - BMD	REVISED -
PLOT SCALE = 100.0000' / In.	CHECKED - AJR	REVISED -
PLOT DATE = 3/19/2019	DATE -	REVISED -

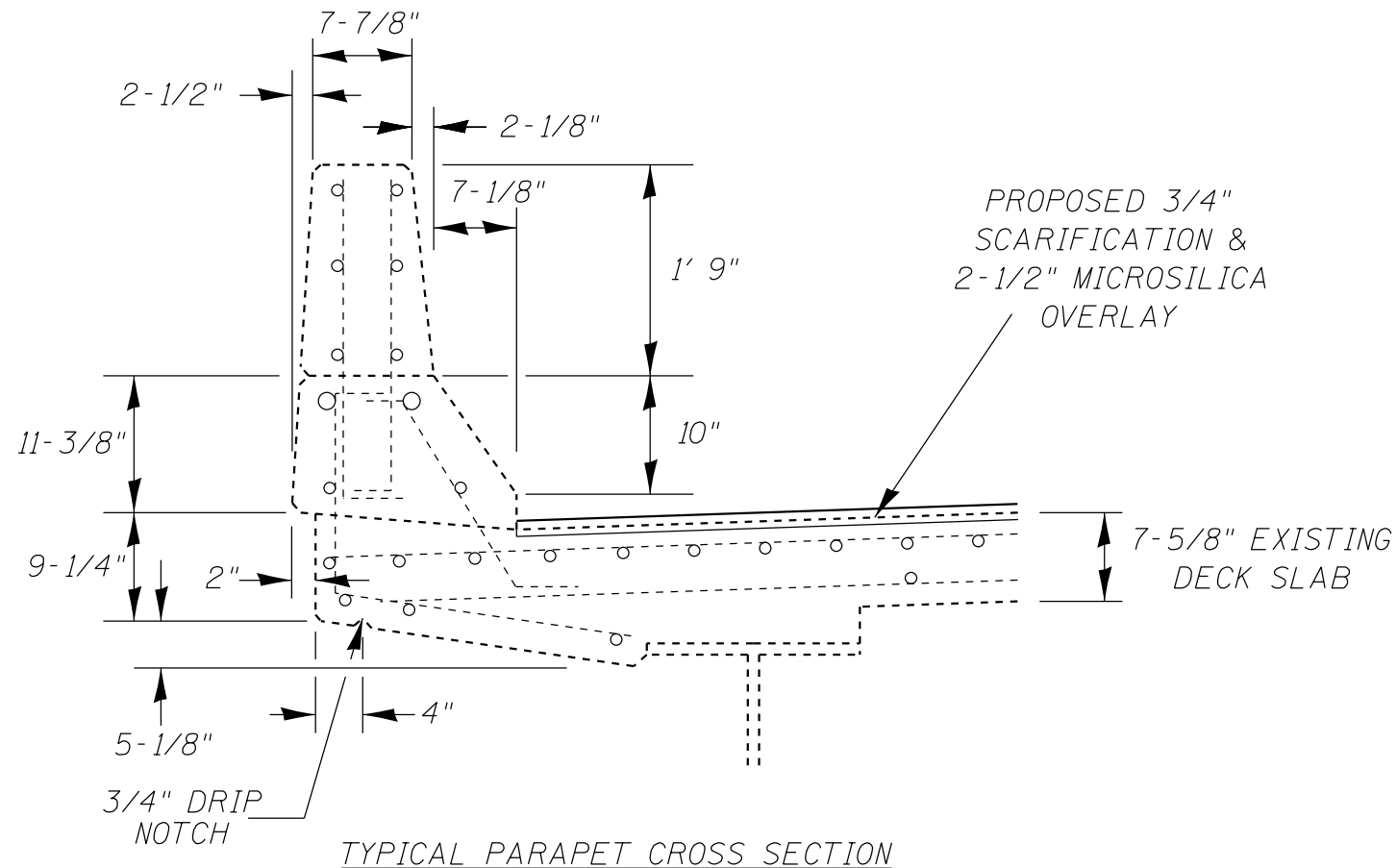
STATE OF ILLINOIS
DEPARTMENT OF TRANSPORTATION

GENERAL PLAN & ELEVATION	
SN 059-0009	
SCALE:	SHEET OF SHEETS STA. TO STA.

F.A.P. RT.E.	SECTION	COUNTY	TOTAL SHEETS	SHEET NO.
670	(I) BDR, BJR, BRR	MACOUPIN	18	12
ILLINOIS FED. AID PROJECT			CONTRACT NO. 72L23	



BRIDGE CROSS SECTION, LOOKING NORTH



TYPICAL PARAPET CROSS SECTION

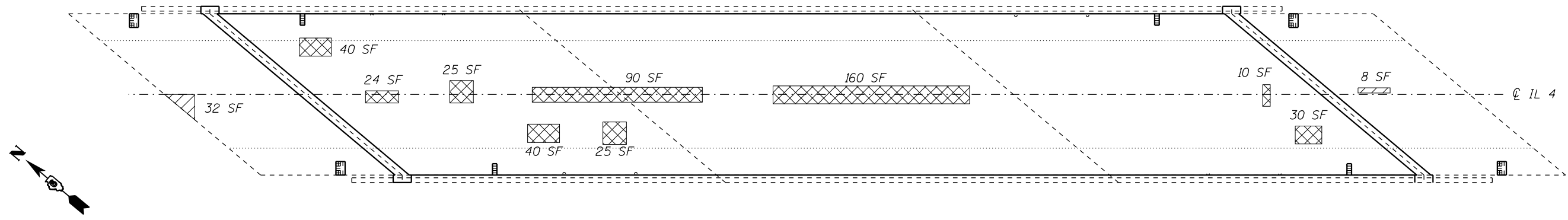
MODEL: Default
 FILE: \\nas01.csc.com\OPERATIONS\Bridges\Bridges\plans_CAD\72L23X - 05200909_overlay\plan\sheet.dgn

USER NAME = dudleybm	DESIGNED -	REVISED -
PLOT SCALE = 100.0000' / in.	DRAWN -	REVISED -
PLOT DATE = 3/19/2019	CHECKED -	REVISED -
	DATE -	REVISED -

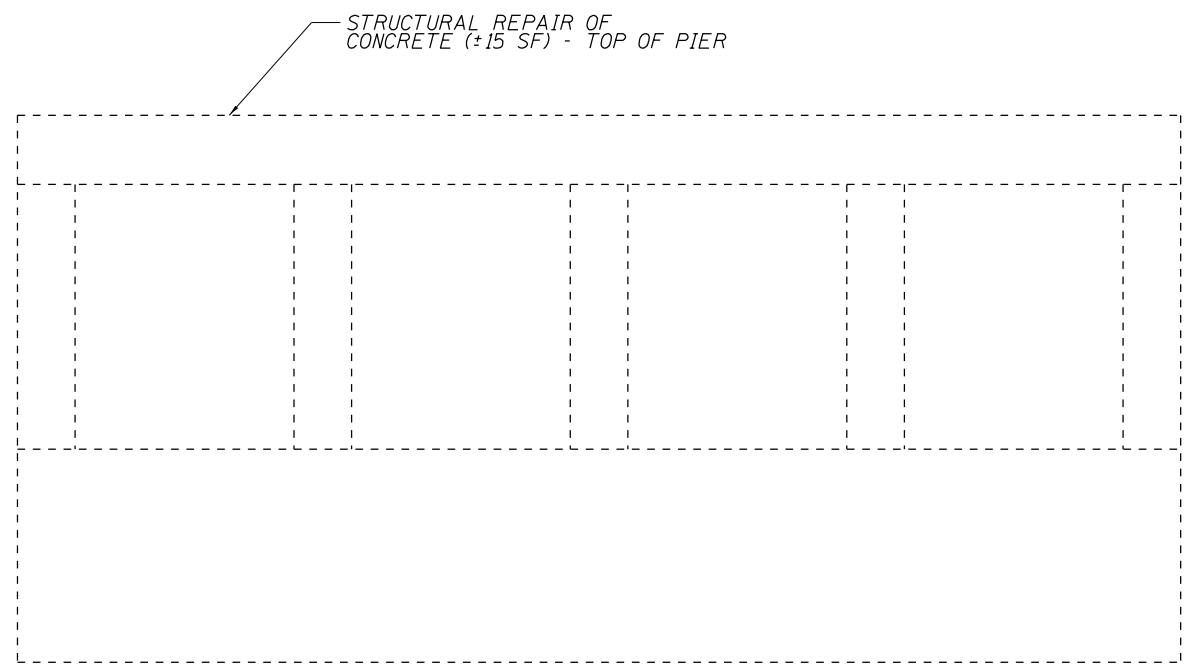
STATE OF ILLINOIS
DEPARTMENT OF TRANSPORTATION

BRIDGE CROSS SECTIONS			
SN 059-0009			
SCALE:	SHEET	OF SHEETS	STA. TO STA.

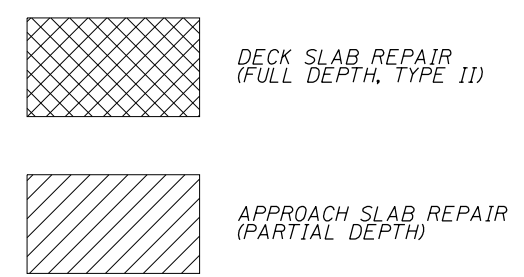
F.A.P. RTE.	SECTION	COUNTY	TOTAL SHEETS	SHEET NO.
670	(J) BDR, BJR, BRR	MACOUPIN	18	13
CONTRACT NO. 72L23				
ILLINOIS FED. AID PROJECT				



PLAN



NORTH PIER - NORTH FACE



PATCHING & SUBSTRUCTURE REPAIR BILL OF MATERIAL (059-0009)

ITEM	UNIT	QUANTITY
Deck Slab Repair (Full Depth, Type II)	Sq. Yd.	50
Approach Slab Repair (Partial Depth)	Sq. Yd.	5
Structural Repair of Concrete (Depth Equal to or Less Than 5 Inches)	Sq. Ft.	15

MODEL: Default
 FILE: \\nas101.csc.state.il.us\projects\bridge\bridgeplans_CAD\72L23\0590009_overby\substructure.dgn

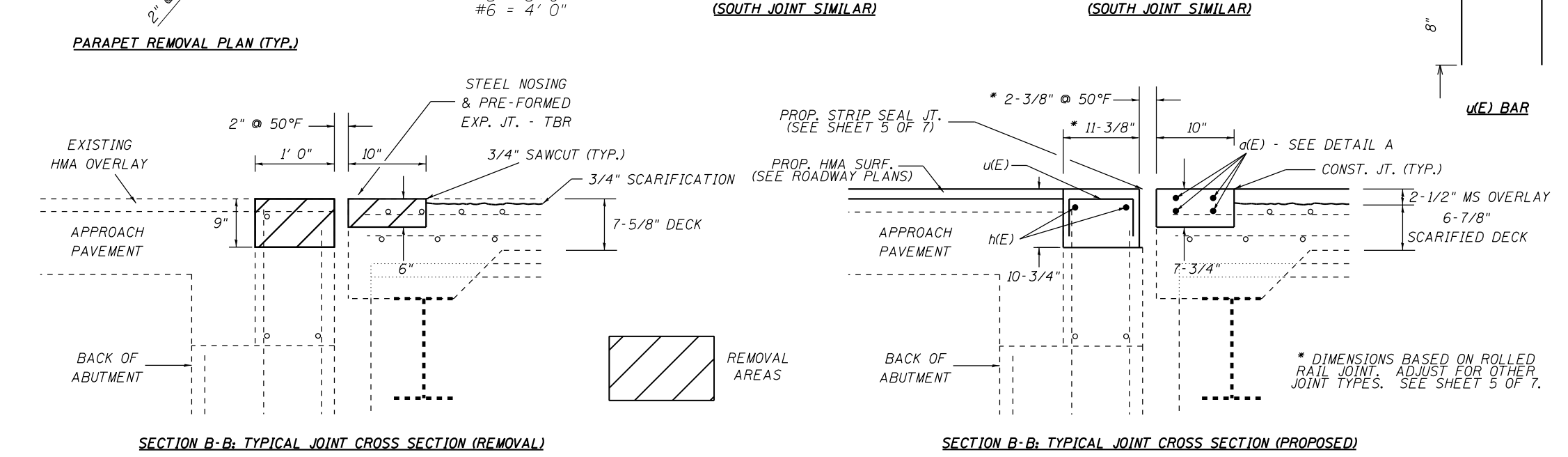
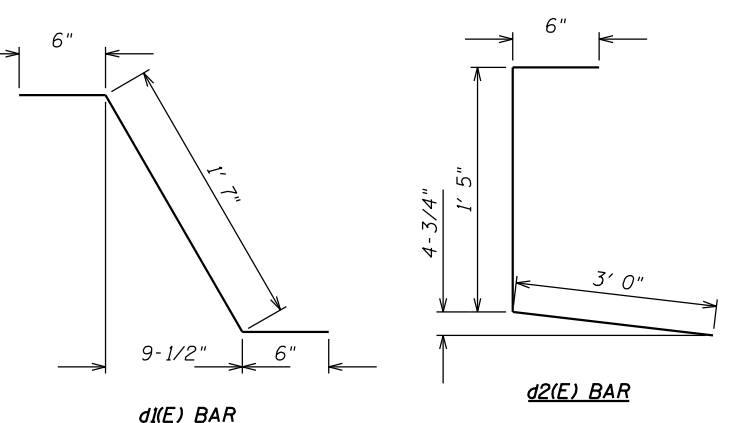
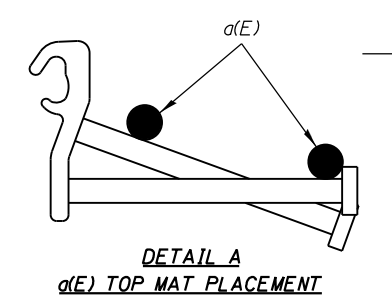
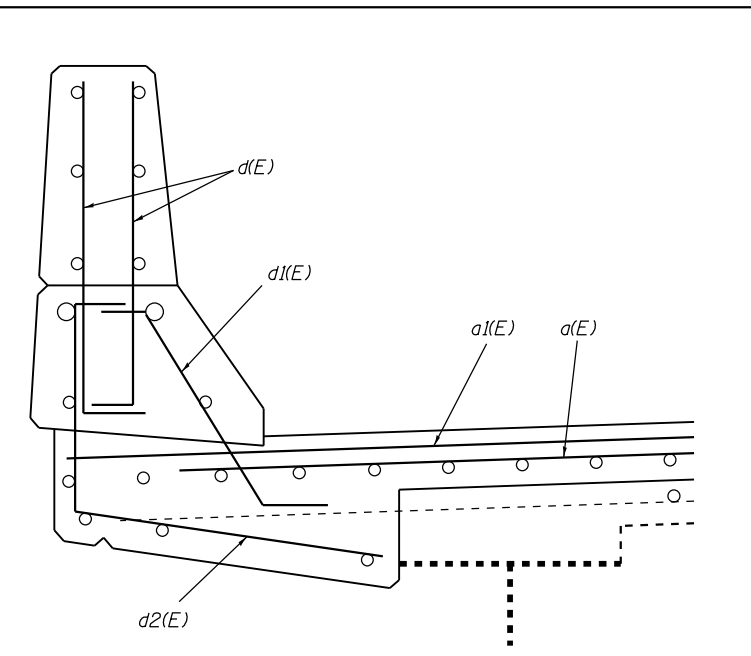
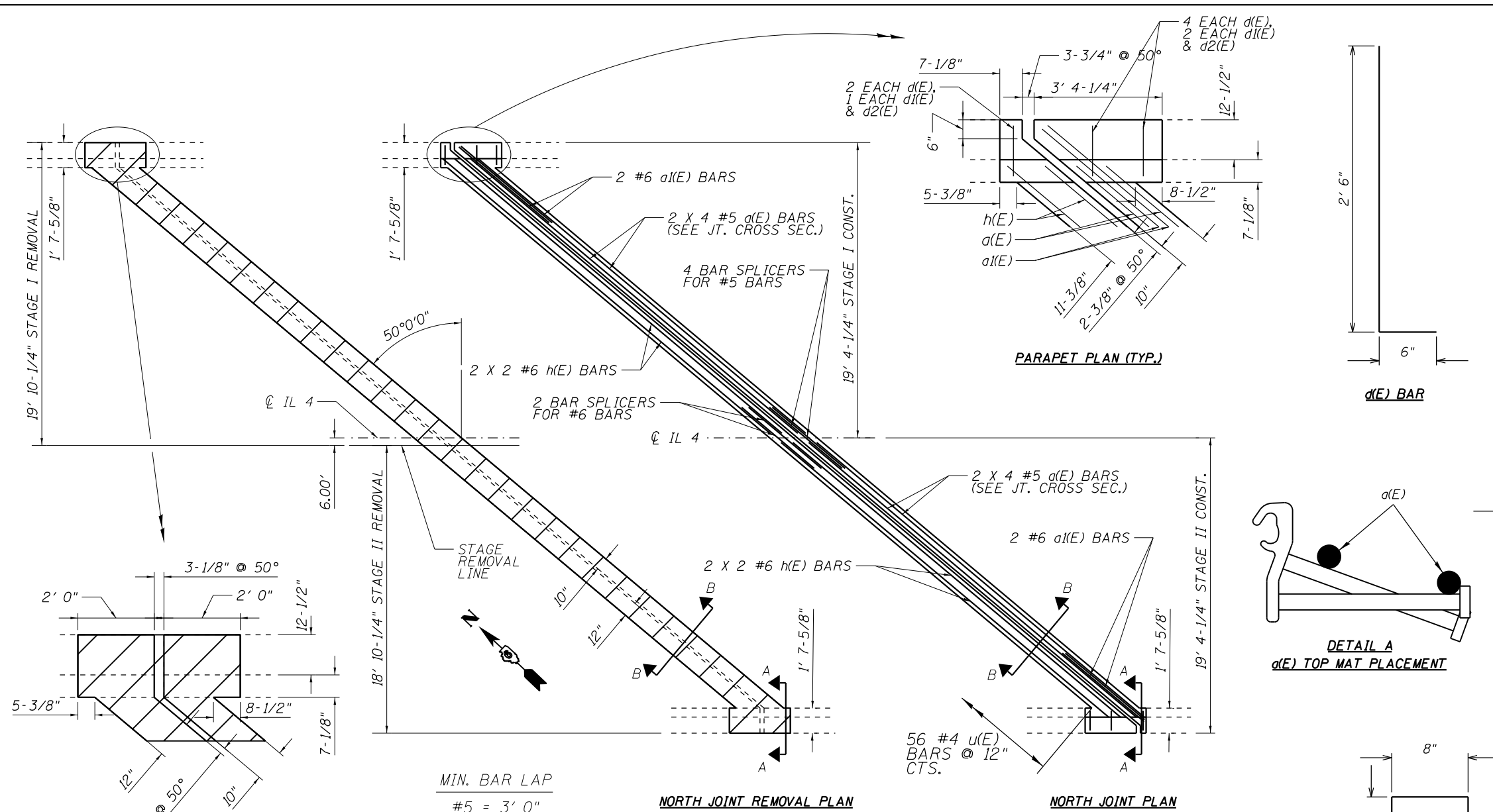
USER NAME = dudleybm	DESIGNED -	REVISED -
PLOT SCALE = 100.0000' / in.	DRAWN -	REVISED -
PLOT DATE = 3/19/2019	CHECKED -	REVISED -
	DATE -	REVISED -

STATE OF ILLINOIS
DEPARTMENT OF TRANSPORTATION

DECK & SUBSTRUCTURE REPAIRS			
SN 059-0009			
SCALE:	SHEET	OF SHEETS	STA. TO STA.

F.A.P. RTE.	SECTION	COUNTY	TOTAL SHEETS	SHEET NO.
670	(J) BDR, BJR, BRR	MACOUPIN	18	14
ILLINOIS			FED. AID PROJECT	

CONTRACT NO. 72L23



BILL OF MATERIAL - 2 JOINTS				
BAR	#	SIZE	LENGTH	SHAPE
d(E)	32	#5	15' 11"	—
a(E)	8	#6	6' 6"	—
d(E)	24	#5	3' 0"	└
d1(E)	12	#5	2' 7"	└
d2(E)	12	#5	4' 11"	└
h(E)	16	#6	16' 2"	—
u(E)	112	#4	2' 0"	□
REINFORCEMENT BARS (EPOXY COATED)		POUND	1320	
CONC. SUPERSTRUCTURE		CU YD	7.6	
CONC. REMOVAL		CU YD	6.6	

MODEL: Default
 FILE NAME: C:\OPERATIONS\bridge\Bdr\bridge\plan_CAD\72L23X - 0590009_overlay\brdrbrest.dgn

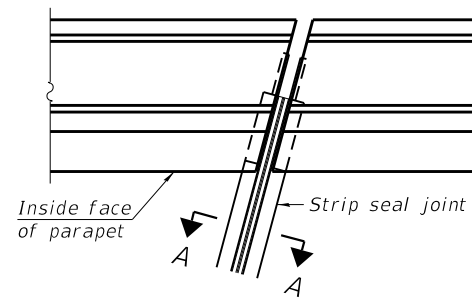
USER NAME = dudleybm	DESIGNED -	REVISED -
PLOT SCALE = 100.0000' / in.	DRAWN -	REVISED -
PLOT DATE = 3/19/2019	CHECKED -	REVISED -
	DATE -	REVISED -

STATE OF ILLINOIS
DEPARTMENT OF TRANSPORTATION

SCALE:		SHEET OF SHEETS		STA.	TO STA.
--------	--	-----------------	--	------	---------

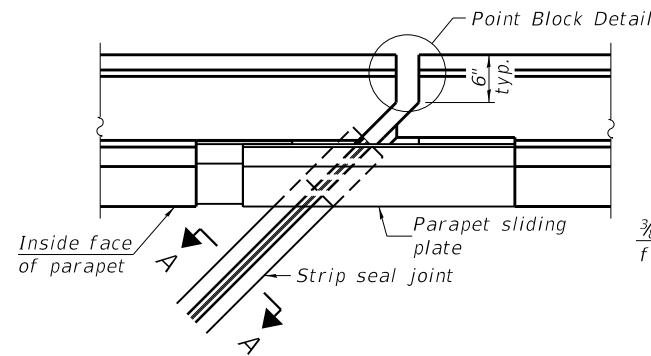
JOINT DETAILS
SN 059-0009

F.A.P. RTE.	SECTION	COUNTY	TOTAL SHEETS	SHEET NO.
670	(J) BDR, BJR, BRR	MACOUPIN	18	15
CONTRACT NO. 72L23			ILLINOIS FED. AID PROJECT	

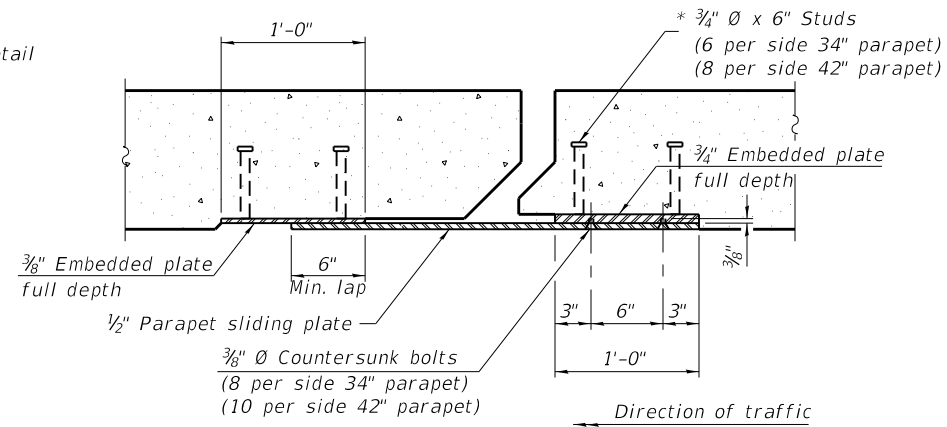


FOR SKEWS $\leq 30^\circ$

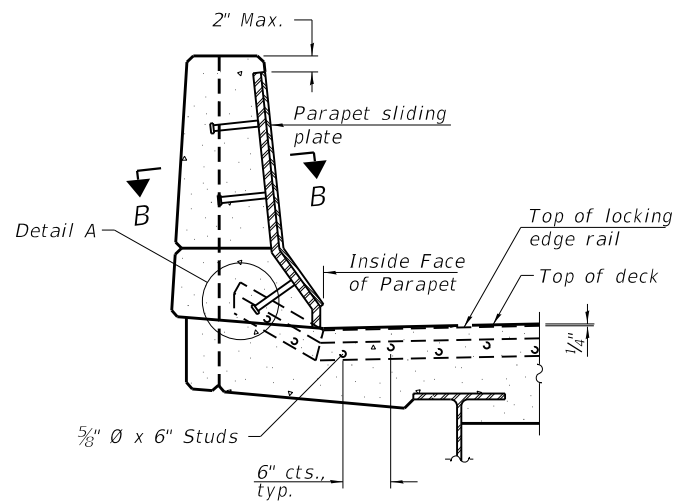
PLAN AT PARAPET



FOR SKEWS $> 30^\circ$

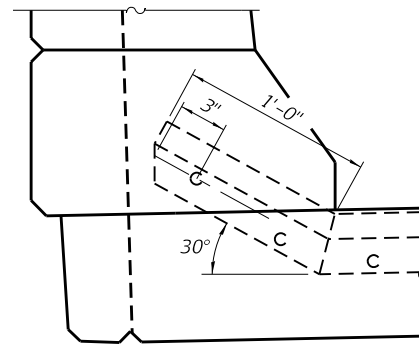


SECTION B-B

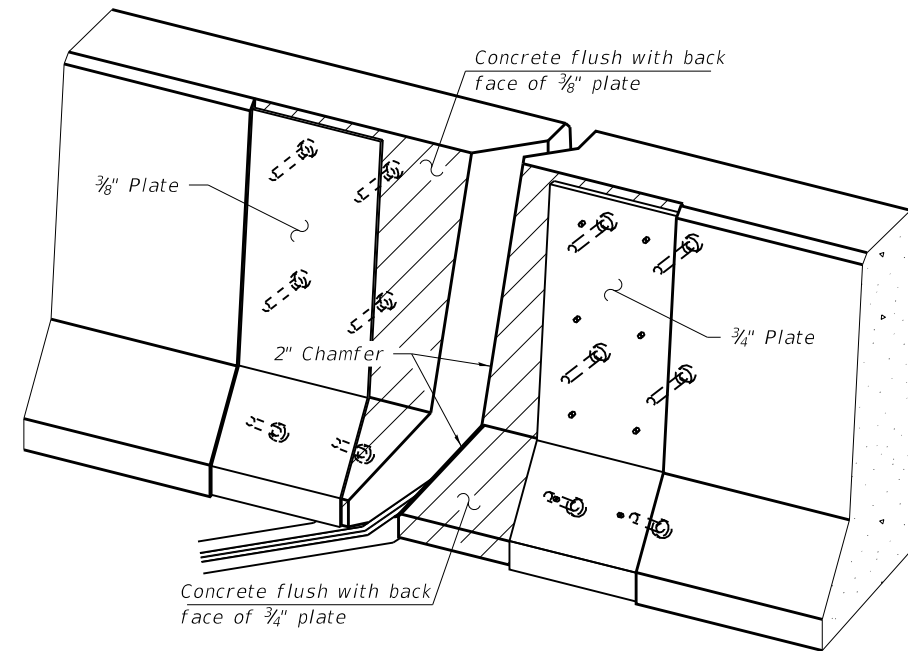


ELEVATION AT PARAPET

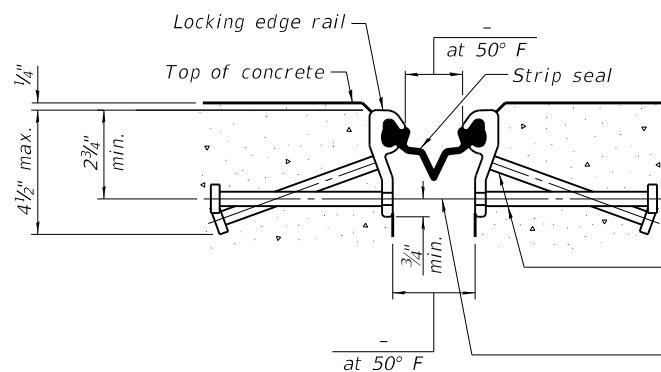
(Skews $> 30^\circ$ shown. Skews $\leq 30^\circ$ similar except as shown in plan view.)



DETAIL A



TRIMETRIC VIEW
(Showing embedded plates only)



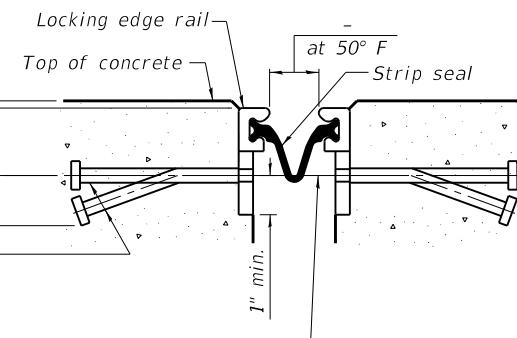
SHOWING ROLLED RAIL JOINT

* $5/8$ " ϕ x 6" studs @ 6" cts. (alternate angled/bent studs with horizontal studs)

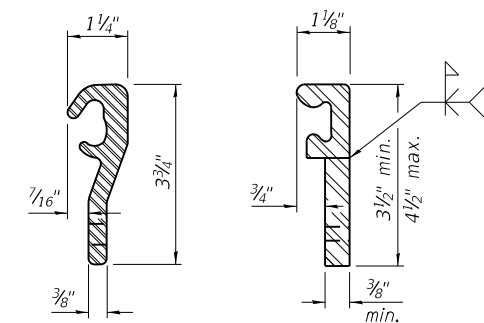
$3/8$ " ϕ threaded rods in $7/16$ " ϕ holes at ± 4 "-0" cts. for holding the proper joint opening based on the temperature during the deck pour. Place to miss studs. All rods shall be burned, or sawed off flush with the plates after concrete is set.

SECTION A-A

* Granular or solid flux filled headed studs conforming to Article 1006.32 of the Std. Specs., automatically end welded.

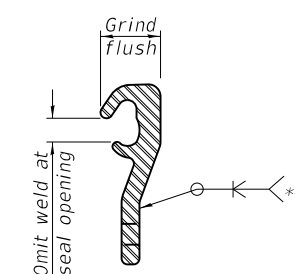


SHOWING WELDED RAIL JOINT



LOCKING EDGE RAILS

** Back gouge not required if complete joint penetration is verified by mock-up.



LOCKING EDGE RAIL SPLICE

The inside of the locking edge rail groove shall be free of weld residue. Rolled rail shown, welded rail similar.

BILL OF MATERIAL

Item	Unit	Total
Preformed Joint Strip Seal	Foot	120

Notes:

The strip seal shall be made continuous and shall have a minimum thickness of $1/4$ ". The configuration of the strip seal shall match the configuration of the locking edge rails. Open or "webbed" strip seal gland configurations are not permitted. The gland shall be sized for a maximum rated movement of 4 inches.

The locking edge rails depicted are configured for typical applications and are conceptual only. The actual configuration of the locking edge rails and matching strip seal may vary from manufacturer to manufacturer provided they fit the application and meet the minimum anchorage shown. Flanged edge rails, however, will not be allowed. Locking edge rails may exceed the $4 1/2$ " maximum depth provided the anchorage system is revised according to the manufacturer's recommendation.

The manufacturer's recommended installation methods shall be followed.

All steel components shall be galvanized after fabrication according to Article 520.03 of the Standard Specifications.

The Maximum space between locking edge rail segments shall be $3/16$ " and sealed with a suitable sealant; however, any rail joint within 10' measured perpendicular to the face of the curb or parapet shall be welded as shown in the locking edge rail splice detail.

Cost of parapet sliding plates, embedded plates, and anchorage studs included with Preformed Joint Strip Seal.

34" F-shape barrier shown, 42" F-shape similar as noted. The concrete opening below the strip seal will vary based on the locking edge rail chosen by the Contractor. Deck and parapet lengths shown elsewhere in the plans are dimensioned to the concrete opening, not the joint opening, and are based on the rolled locking edge rail. If the Contractor elects to use a different locking edge rail, dimensional adjustments may be required. One exception to this would be the strip seal joint at the end of the precast bridge approach slab. For these cases the pavement connector length shall be adjusted, not the length of the bridge approach slab.

MODEL: Default; FILE: \\nas101.cpep.stateil.us\bridge\Bdr\eghans_CAD\723XX - 0590009_overby\substruct.dgn

EJ-SS

8-11-17

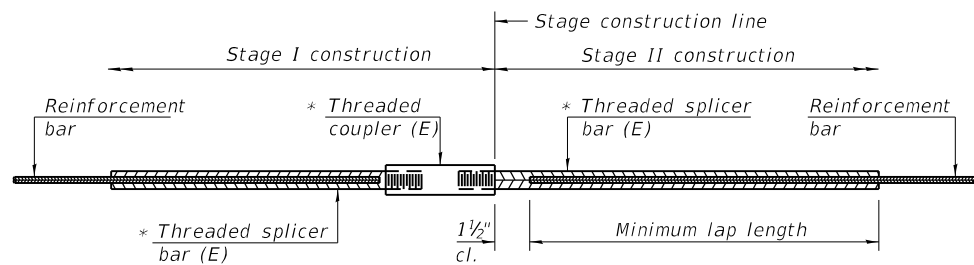
USER NAME = dudleybm	DESIGNED -	REVISED -
PLOT SCALE = 100,0000' / in.	DRAWN -	REVISED -
PLOT DATE = 3/19/2019	CHECKED -	REVISED -
	DATE -	REVISED -

STATE OF ILLINOIS
DEPARTMENT OF TRANSPORTATION

PREFORMED JOINT STRIP SEAL
STRUCTURE NO. 059-0009

SCALE: SHEET OF SHEETS STA. TO STA.

F.A.P. RTE. 670	SECTION (J) BDR, BJR, BRR	COUNTY MACOUPIN	TOTAL SHEETS 18	SHEET NO. 16
			CONTRACT NO. 72L23	
		ILLINOIS FED. AID PROJECT		

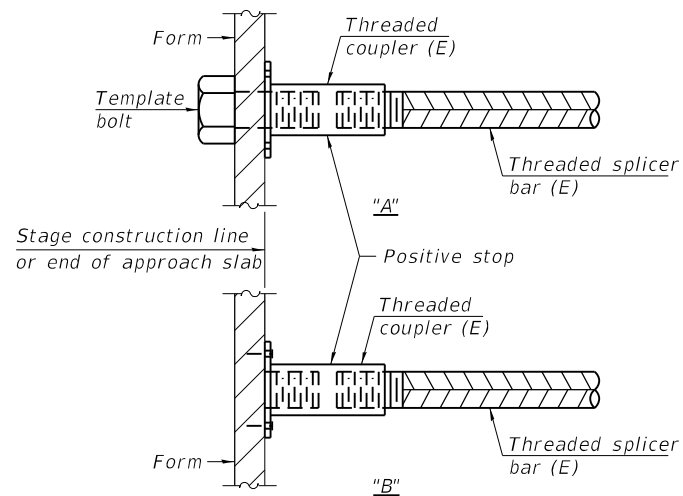


STANDARD BAR SPLICER ASSEMBLY

Threaded splicer bar length = min. lap length + 1 1/2" + thread length

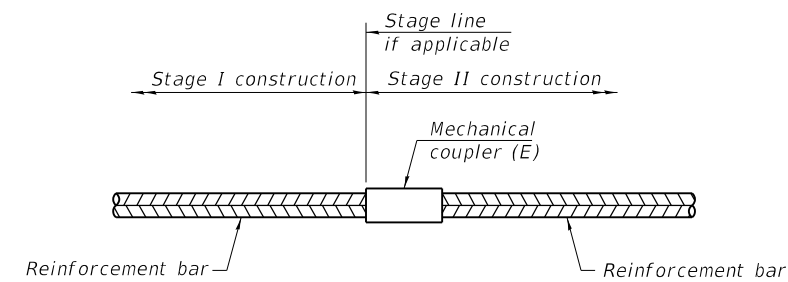
* Epoxy not required on Bar Splicer Assembly components used in conjunction with black bars.

Location	Bar size	No. assemblies required	Minimum lap length
Abuts. (deck side)	#5	8	3' 0"
Abuts. (appr. side)	#6	4	4' 0"



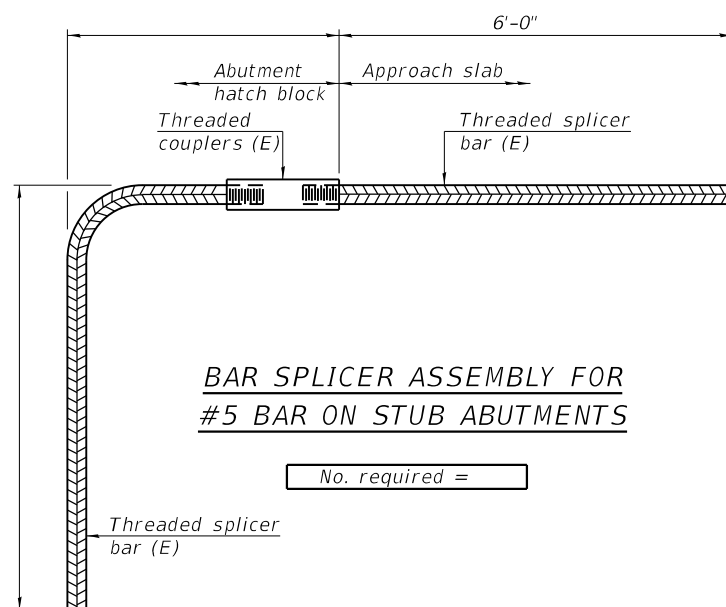
INSTALLATION AND SETTING METHODS

"A" : Set bar splicer assembly by means of a template bolt.
 "B" : Set bar splicer assembly by nailing to wood forms or cementing to steel forms.
 (E) : Indicates epoxy coating.



STANDARD MECHANICAL SPLICER

Location	Bar size	No. assemblies required



BAR SPLICER ASSEMBLY FOR #5 BAR ON STUB ABUTMENTS

No. required =

NOTES

Splicer bars shall be deformed with threaded ends and have a minimum 60 ksi yield strength.
 All reinforcement shall be lapped and tied to the splicer bars.
 Bar splicer assemblies shall be epoxy coated according to the requirements for reinforcement bars. See Section 508 of the Standard Specifications.
 See approved list of bar splicer assemblies and mechanical splicers for alternatives.

MODEL: Default
 FILE NAME: \\CENTRALIDB\OPERATIONS\Bridges\Bridges\plans_CAD\72L23 - 0590009_overby\2d\sheet.dgn

BSD-1

2-17-2017

USER NAME = dudleybm	DESIGNED - _____	REVISED - _____
	DRAWN - _____	REVISED - _____
PLOT SCALE = 100.0000' / in.	CHECKED - _____	REVISED - _____
PLOT DATE = 4/26/2019	DATE - _____	REVISED - _____

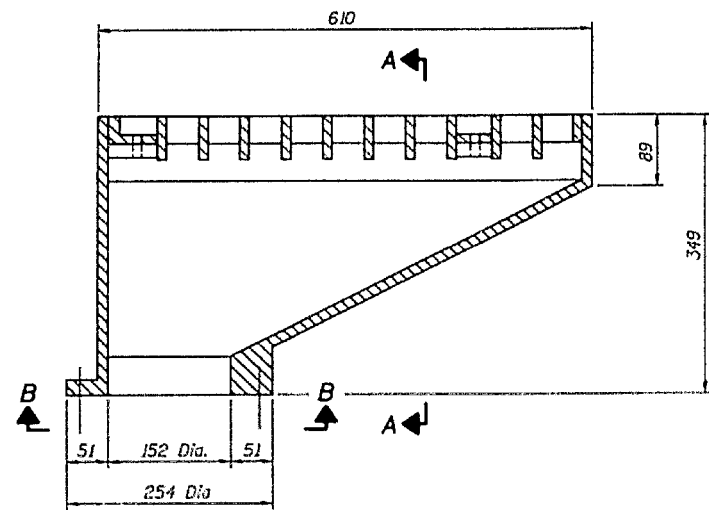
**STATE OF ILLINOIS
 DEPARTMENT OF TRANSPORTATION**

BAR SPLICER ASSEMBLY AND MECHANICAL SPLICER DETAILS
SN 059-0009

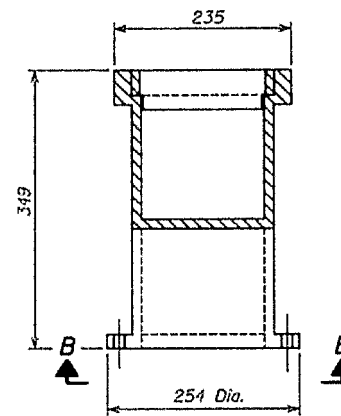
SCALE: _____ SHEET ____ OF ____ SHEETS STA. _____ TO STA. _____

F.A.P. RTE.	SECTION	COUNTY	TOTAL SHEETS	SHEET NO.
670	(J) BDR, BJR, BRR	MACOUPIN	18	17
			CONTRACT NO. 72L23	
		ILLINOIS	FED. AID PROJECT	

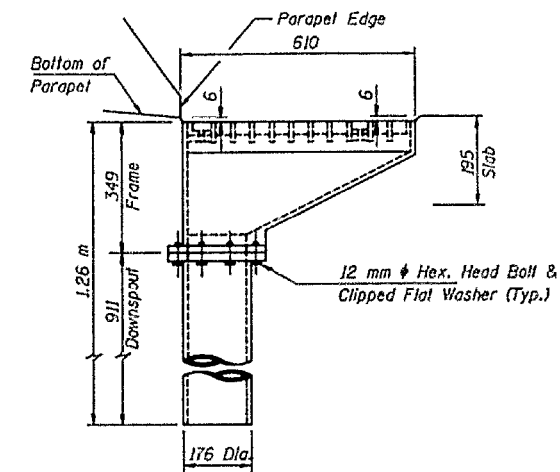
DATE	DESIGNED	DRAWN	CHECKED	DATE	SHEET NO. 7
6/70	ADL	BJJ	BJJ	22	20 SHEETS
PROJECT NO. 670		SECTION (J) BDR, BJR, BRR		COUNTY MACOUPIN	
CONTRACT NO. 059-0009		STATION 6+710.01		SHEET NO. 7	



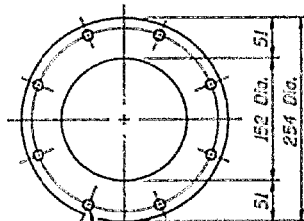
FRAME AND GRATE



SECTION A-A

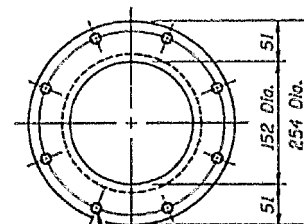


DRAINAGE SCUPPER

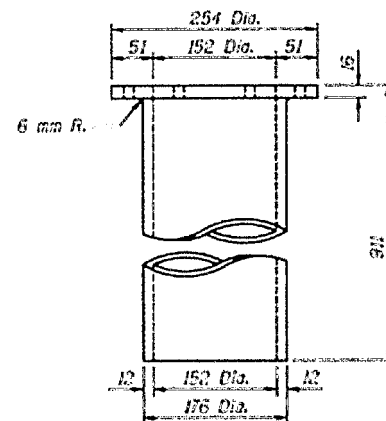


VIEW B-B

Drill & Tap 8 Holes for 12 mm ϕ Bolts on 222 mm Bolt Circle Diameter.



8 - 14 mm ϕ Holes on 222 mm Bolt Circle Diameter



DOWNSPOUT

Notes: All cast iron parts shall be gray iron conforming to the requirements of AASHTO M 135, Class 35B.
 Bolts and washers shall conform to the requirements of ASTM A 307.
 All bolts and washers shall be galvanized according to AASHTO M 232.
 As an alternate bolts and washers may be stainless steel conforming to the requirements of ASTM A 193M, Type 304.
 Cost of the Grate, Frame, Downspout, bolts and washers including complete installation of Scupper will be paid for at the unit bid price each for "DRAINAGE SCUPPERS SPECIAL."
 All dimensions are in millimeters (mm) except as noted.

DESIGNED	ADL
CHECKED	BJJ
DRAWN	BJJ
CHECKED	BJJ

REVISIONS	
NO.	DATE

**CAST IRON
 DRAINAGE SCUPPER, DS-12
 ILLINOIS ROUTE 4 OVER
 UNION PACIFIC RAILROAD
 (FORMERLY C & NW RAILROAD)
 FAP ROUTE 670 SECTION (R,J) VBR
 MACOUPIN COUNTY
 STATION 6+710.01
 STRUCTURE NUMBER 059-0009**

MODEL: Default
 FILE NAME: \\CENTRILIB\OPERATIONS\Bridges\Bridges\plans_CAD\72L23 - 0590009.dwg
 over by: babin@state.gov

USER NAME = dquleybm	DESIGNED - _____	REVISED - _____
PLOT SCALE = 100.0000' / in.	DRAWN - _____	REVISED - _____
PLOT DATE = 4/26/2019	CHECKED - _____	REVISED - _____
	DATE - _____	REVISED - _____

STATE OF ILLINOIS
 DEPARTMENT OF TRANSPORTATION

EXISTING SCUPPER DETAILS, SN 059-0009
 (FOR INFORMATION ONLY)

SCALE: _____ SHEET _____ OF _____ SHEETS STA. _____ TO STA. _____

F.A.P. RTE.	SECTION	COUNTY	TOTAL SHEETS	SHEET NO.
670	(J) BDR, BJR, BRR	MACOUPIN	18	18
ILLINOIS FED. AID PROJECT			CONTRACT NO. 72L23	