

STATE OF ILLINOIS  
DEPARTMENT OF TRANSPORTATION

F.A.I. RTE.	SECTION	COUNTY	TOTAL SHEETS	SHEET NO.
39	(50-8)PP	LASALLE	15	1
		ILLINOIS	CONTRACT NO. 66J85	

INDEX OF SHEETS

- 1 COVER SHEET
- 2 GENERAL NOTES
- 3-4 SUMMARY OF QUANTITIES
- 5 TYPICAL SECTIONS
- 6-10 SCHEDULE OF QUANTITIES
- 11-14 DETAILS
- 15 STANDARD 701400 (SPECIAL)

LIST OF ILLINOIS DOT HIGHWAY STANDARDS

- 000001 07 STANDARD SYMBOLS, ABBREVIATIONS AND PATTERNS
- 001006 DECIMAL OF AN INCH AND OF A FOOT
- 701101-05 OFF-ROAD OPERATIONS, MULTILANE, 15' (4.5 m) TO 24' (600 mm) FROM PAVEMENT EDGE
- 701106-02 OFF-ROAD OPERATIONS, MULTILANE, MORE THAN 15' (4.5 m) AWAY
- 701400-09 APPROACH TO LANE CLOSURE, FREEWAY/EXPRESSWAY
- 701401-12 LANE CLOSURE, FREEWAY/EXPRESSWAY
- 701406-12 LANE CLOSURE, FREEWAY/EXPRESSWAY, DAY OPERATIONS ONLY
- 701411-09 LANE CLOSURE, MULTILANE, AT ENTRANCE OR EXIT RAMP FOR SPEEDS ≥ 45 MPH
- 701426-09 LANE CLOSURE, MULTILANE INTERMITTENT OR MOVING OPERATION, FOR SPEEDS ≥ 45 MPH
- 701428 01 TRAFFIC CONTROL, SETUP AND REMOVAL, FREEWAY/EXPRESSWAY
- 701901-08 TRAFFIC CONTROL DEVICES
- 780001-05 TYPICAL PAVEMENT MARKINGS
- 781001-04 TYPICAL APPLICATIONS RAISED REFLECTIVE PAVEMENT MARKERS

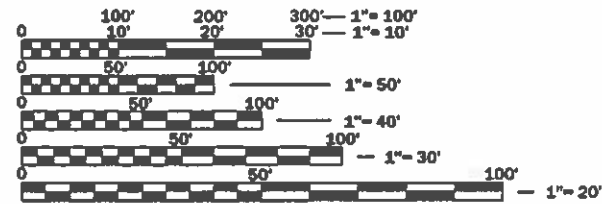
PROPOSED  
HIGHWAY PLANS

ROUTE FAI 39 (I-39)  
SECTION (50-8)PP  
PROJECT STATE  
PAVEMENT PATCHING  
LASALLE COUNTY

C-93-068-19



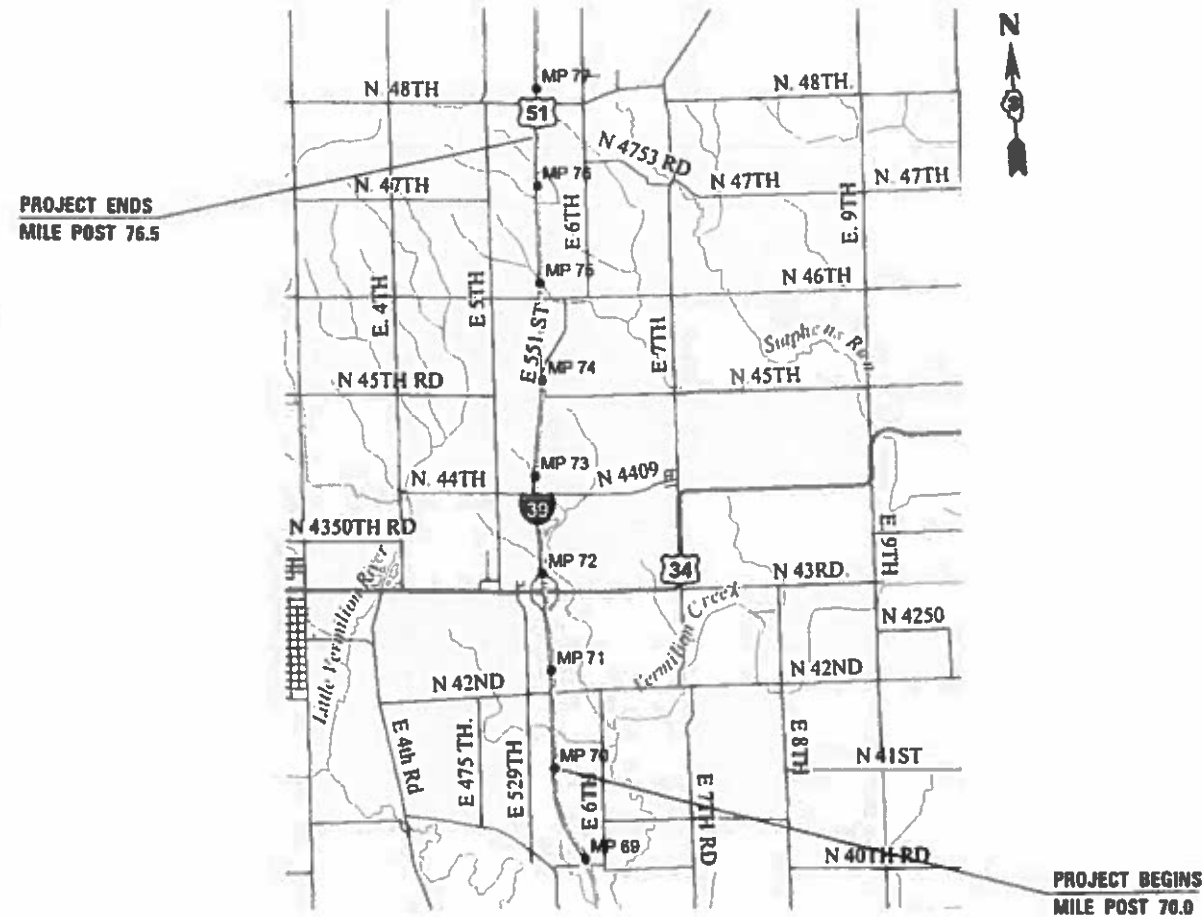
FUNCTIONAL CLASSIFICATION:  
INTERSTATE  
2017 ADT = 20100 VPD  
PV% = 61.69 SU% = 4.48 MU% = 33.83



FULL SIZE PLANS HAVE BEEN PREPARED USING STANDARD ENGINEERING SCALES. REDUCED SIZED PLANS WILL NOT CONFORM TO STANDARD SCALES. IN MAKING MEASUREMENTS ON REDUCED PLANS, THE ABOVE SCALES MAY BE USED.

J.U.L.I.E.  
JOINT UTILITY LOCATION INFORMATION FOR EXCAVATION  
1-800-892-0123  
OR 811

PROJECT ENGINEER: JOE KANNEL, P.E  
UNIT CHIEF: ARLENE OTERO-FEBUS  
DISTRICT 3 NO. (815) 434-6131  
CONTRACT NO. 66J85



GROSS LENGTH = 34320 FT = 6.5 MILE  
NET LENGTH = 34320 FT = 6.5 MILE

STATE OF ILLINOIS  
DEPARTMENT OF TRANSPORTATION

SUBMITTED *March 25 2019*  
*Karin [Signature]*  
REGIONAL ENGINEER

*May 10 2019*  
*[Signature]*  
ENGINEER OF DESIGN AND ENVIRONMENT

*May 10 2019*  
*[Signature]*  
DIRECTOR OF HIGHWAYS PROJECT IMPLEMENTATION

PRINTED BY THE AUTHORITY  
OF THE STATE OF ILLINOIS

**GENERAL NOTES**

THE INTENT OF THIS PROJECT IS TO ROUT AND SEAL WORKING TRANSVERSE CRACKS AND PRIMARY LONGITUDINAL CRACKS GREATER THAN 1/4" IN WIDTH. SECONDARY CRACKS GREATER THAN 1/4" IN WIDTH SHALL BE SEALED.

THE ARE NO QUANTITIES TO REPAIR PAVEMENT MARKING, SO CARE SHOULD BE TAKEN TO AVOID DAMAGING EXISTING PAVEMENT MARKINGS. LONGITUDINAL CRACKS THAT CONFLICT WITH THE EXISTING PAVEMENT MARKINGS SHALL NOT BE SEALED.

ALL PCC BRIDGE DECKS SHALL BE OMITTED. BRIDGE DECKS WITH HMA OVERLAYS ARE TO BE SEALED ONLY (NO ROUTING).

PLAN DIMENSIONS AND DETAILS RELATIVE TO EXISTING PLANS ARE SUBJECT TO NOMINAL CONSTRUCTION VARIATIONS. THE CONTRACTOR SHALL FIELD VERIFY EXISTING DIMENSIONS AND DETAILS AFFECTING NEW CONSTRUCTION AND MAKE NECESSARY APPROVED ADJUSTMENTS PRIOR TO CONSTRUCTION OR ORDERING OF MATERIALS. SUCH VARIATIONS SHALL NOT BE CAUSE FOR ADDITIONAL COMPENSATION FOR A CHANGE IN SCOPE OF WORK; HOWEVER, THE CONTRACTOR WILL BE PAID FOR THE QUANTITY ACTUALLY FURNISHED AT THE UNIT PRICE BID FOR THE WORK.

ALL EXCAVATED MATERIAL, WHICH INCLUDES DIGGING OR GRADING OF ANY SOIL OR FILL MATERIAL, WITH THE EXCEPTION OF AGGREGATE FILLS, MUST BE INCORPORATED WITHIN THE IDOT RIGHT OF WAY DUE TO ENVIRONMENTAL DOCUMENTATION REQUIREMENTS.

ANY REFERENCE TO A STANDARD IN THESE PLANS SHALL BE INTERPRETED TO MEAN THE EDITION AS INDICATED BY THE SUBNUMBER SHOWN IN THE LIST OF STANDARDS OR THE COPY INCLUDED IN THESE PLANS.

THE FOLLOWING RATES OF APPLICATION HAVE BEEN USED IN CALCULATING PLAN QUANTITIES:

CRACK FILLING MATERIAL	0.35	POUNDS/FOOT
MIX FOR CRACKS, ITS & FLGWYS	0.0003	TONS / SQ YD

THE CONTRACTOR SHALL CONTACT JULIE AT LEAST 48 HOURS PRIOR TO EXCAVATION TO DETERMINE WHICH UTILITIES ARE IN THE AREA.

HMA MIXTURE REQUIREMENT TABLE	
LOCATION(S):	I- 39 LONGITUDINAL PARTIAL DEPTH PATCHES
MIXTURE USE(S):	HMA SURFACE
BINDER GRADE (PG):	PG 64-22
DESIGN AIR VOIDS:	4.0% @ N90
MIXTURE COMPOSITION: (MIXTURE GRADATION)	TL 9.5
FRICITION AGGREGATE:	MIXTURE D
MIXTURE WEIGHT:	112.0 LB/SY/IN
QUALITY MANAGEMENT PROGRAM:	QC/QA
SUBLOT SIZE:	N/A
DENSITY TEST METHOD:	CORES/NUCLEAR

**COMMITMENTS**

STATE OF ILLINOIS  
DEPARTMENT OF TRANSPORTATION  
DISTRICT THREE  
AS BUILT INFORMATION

\_\_\_\_\_  
SUPERVISING CONSTRUCTION FIELD ENGINEER

\_\_\_\_\_  
RESIDENT ENGINEER / TECHNICIAN

START & END DATES  
OF CONSTRUCTION:

INSPECTORS:

SCALE: SHEET 1 OF 1 SHEETS STA. TO STA.

STATE OF ILLINOIS  
DEPARTMENT OF TRANSPORTATION  
DISTRICT THREE

PREPARED BY: Tom Benoit  
DISTRICT STUDIES & PLANS ENGINEER

DATE: 3-25-19

EXAMINED BY: Kyle Van Dyke  
DISTRICT CONSTRUCTION ENGINEER

Michael Asha  
DISTRICT MATERIALS ENGINEER

[Signature]  
DISTRICT OPERATIONS ENGINEER

FILE NAME	USER NAME # NOLASCOJ	DESIGNED -	REVISED -	STATE OF ILLINOIS DEPARTMENT OF TRANSPORTATION	GENERAL NOTES	F.A.I. RTE	SECTION	COUNTY	TOTAL SHEETS	SHEET NO.	
pr:\pdr\room.dot\illinois.gov\PW\DOT\Documents\IDOT	Files\District 3\Projects\0366J85\CADD\0366J85-4H-cover.dwg	DRAWN -	REVISED -			I-39	(50-8)PP	LASALLE	15	2	
Default	PLOT SCALE # 100.0000' / in.	CHECKED -	REVISED -			CONTRACT NO. 66J85					
	PLOT DATE # 3/22/2019	DATE -	REVISED -			ILLINOIS FED. AID PROJECT					

CODE NO.	ITEM	UNIT	TOTAL QUANTITY	CONSTR. CODE
				100% STATE
				ROADWAY 0006 RURAL
40600290	BITUMINOUS MATERIALS (TACK COAT)	POUND	1540	1540
40600400	MIXTURE FOR CRACKS, JOINTS, AND FLANGWAYS	TON	1.1	1.1
44200553	CLASS A PATCHES, TYPE II, 10 INCH	SQ YD	1304	1304
44200557	CLASS A PATCHES, TYPE III, 10 INCH	SQ YD	224	224
44200559	CLASS A PATCHES, TYPE IV, 10 INCH	SQ YD	580	580
44213000	PATCHING REINFORCEMENT	SQ YD	2108	2108
44213200	SAW CUTS	FOOT	7324	7324
44213204	TIE BARS 3/4"	EACH	8106	8106
45100100	CRACK ROUTING (PAVEMENT)	FOOT	698503	698503
45100200	CRACK FILLING	POUND	244478	244478
67100100	MOBILIZATION	L SUM	1	1
70100420	TRAFFIC CONTROL AND PROTECTION, STANDARD 701411	EACH	4	4
70103815	TRAFFIC CONTROL SURVEILLANCE	CAL DA	18	18
70107025	CHANGEABLE MESSAGE SIGN	CAL DA	28	28

FILE NAME =	USER NAME = NOLASCOCJ	DESIGNED -	REVISED -
pw:\planroom\dot\illinois.gov\PWIDOT\Documents\IDOT	offices\District 3\Projects\D366J85\CADData\D366J85-sht-details.d	DRAWN -	REVISED -
Default	PLOT SCALE = 100,0000' / in.	CHECKED -	REVISED -
	PLOT DATE = 3/27/2019	DATE -	REVISED -

**STATE OF ILLINOIS  
DEPARTMENT OF TRANSPORTATION**

**SUMMARY OF QUANTITIES**

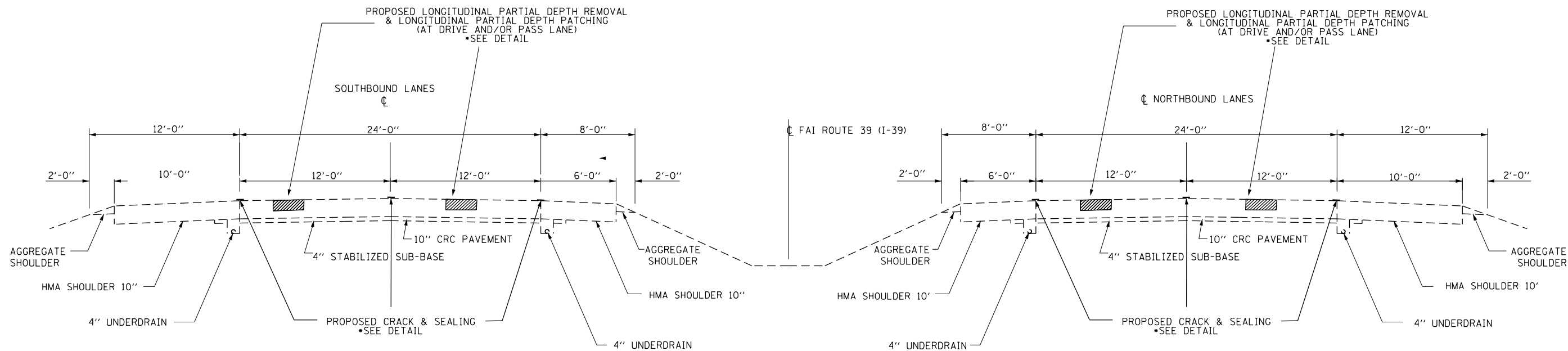
SCALE: SHEET 1 OF 2 SHEETS STA. TO STA.

F.A.I. RTE.	SECTION	COUNTY	TOTAL SHEETS	SHEET NO.
39	(50-8)PP	LASALLE	15	3
			CONTRACT NO. 66J85	
		ILLINOIS	FED. AID PROJECT	

CODE NO.	ITEM	UNIT	TOTAL QUANTITY	CONSTR. CODE	
				100% STATE	
				ROADWAY	
				0006	RURAL
* 78008210	POLYUREA PAVEMENT MARKING TYPE I - LINE 4"	FOOT	1582		1582
* 78008230	POLYUREA PAVEMENT MARKING TYPE I - LINE 6"	FOOT	124		124
* 78100100	RAISED REFLECTIVE PAVEMENT MARKER	EACH	41		41
78100200	TEMPORARY RAISED REFLECTIVE PAVEMENT MARKER	EACH	41		41
X4405020	LONGITUDINAL PARTIAL DEPTH REMOVAL 2"	FOOT	15387		15387
X4420900	LONGITUDINAL PARTIAL DEPTH PATCHING	TON	382.4		382.4
X7010805	TRAFFIC CONTROL AND PROTECTION, STANDARD 701401 (SPECIAL)	L SUM	1		1

\*= SPECIALTY ITEM

FILE NAME =	USER NAME = NOLASCOCJ	DESIGNED -	REVISED -	<b>STATE OF ILLINOIS DEPARTMENT OF TRANSPORTATION</b>	<b>SUMMARY OF QUANTITIES</b>				F.A.I. RTE.	SECTION	COUNTY	TOTAL SHEETS	SHEET NO.
pw:\planroom\dot\illinois.gov\PWIDOT\Documents\IDOT	Office\District 3\Projects\D366J85\CADData\D366J85-sht-details.d	DRAWN -	REVISED -						39	(50-8)PP	LASALLE	15	4
Default	PLOT SCALE = 100,0000' / in.	CHECKED -	REVISED -		CONTRACT NO. 66J85								
	PLOT DATE = 3/27/2019	DATE -	REVISED -		SCALE:	SHEET 2	OF 2	SHEETS	STA.	TO STA.	ILLINOIS	FED. AID PROJECT	



## TYPICAL SECTION

**FAI ROUTE 39 (I-39) – MAINLINE  
MP 70.0 – MP 76.5**

### PERMANENT SURVEY MARKERS

GPS NUMBER	DESCRIPTION	EXISTING MONUMENT TYPE	PROPOSED MONUMENT TYPE	MONUMENT RECORD TO BE RECORDED	RESPONSIBILITY
N/A	NO CENTERLINE CONTROL OR SECTION CORNER PERMANENT SURVEY MARKERS TO BE SET	N/A	N/A	N/A	N/A

THERE ARE NO RECORD LAND SURVEY OR CENTERLINE CONTROL MONUMENTS LOCATED ON THE I-39 ROAD SURFACE WITHIN THE JOB LIMITS. UNKNOWN MONUMENTS SET BY OTHERS MAY EXIST. IF FOUND, THE R.E. MUST TIE AND REQUEST PLATS AND PLANS PERSONNEL TO GPS ANY MONUMENT SUBJECT TO DAMAGE OR DESTRUCTION FROM THE PAVEMENT PATCHING, AND INFORM THEM TO RESET THESE MONUMENTS UPON JOB COMPLETION. THE R.E. IS TO INFORM THE PLATS AND PLANS SECTION TO SEARCH FOR ADDITIONAL MONUMENTS IF JOB LIMITS ARE EXPANDED DURING CONSTRUCTION. NO MONUMENT RECORDS WILL BE REQUIRED FOR THIS JOB.

LONGITUDINAL PARTIAL DEPTH PATCHING - NORTHBOUND						
LOCATION	LENGTH	AREA	LONGITUDINAL PARTIAL DEPTH REMOVAL 2"	BIT MAT (TACK COAT)	LONGITUDINAL PARTIAL DEPTH PATCHING	MIX FOR CRACKS, JOINTS & FLGWYS
MILE POST	FOOT	SQ YD	FOOT	POUND	TON	TON
PASSING LANE						
70.1	90	20	90	9	2.2	0.01
70.3	100	22	100	10	2.5	0.01
70.4	160	36	160	16	4	0.01
70.5	105	23	105	10	2.6	0.01
70.6	130	29	130	13	3.2	0.01
70.7	180	40	180	18	4.5	0.01
70.8	125	28	125	13	3.1	0.01
70.9	135	30	135	14	3.4	0.01
71.4	110	24	110	11	2.7	0.01
71.5	130	29	130	13	3.2	0.01
71.9	150	33	150	15	3.7	0.01
72.0	115	26	115	12	2.9	0.01
72.2	120	27	120	12	3	0.01
72.4	110	24	110	11	2.7	0.01
75.1	300	67	300	30	7.5	0.02
75.2	140	31	140	14	3.5	0.01
75.4	100	22	100	10	2.5	0.01
75.5	120	27	120	12	3	0.01
SUB-TOTAL			2420	243	60.2	0.19
DRIVING LANE						
70.0	120	27	120	12	3	0.01
70.1	30	7	30	3	0.8	
70.2	140	31	140	14	3.5	0.01
70.3	80	18	80	8	2	0.01
70.4	80	18	80	8	2	0.01
70.5	110	24	110	11	2.7	0.01
70.6	70	16	70	7	1.8	
70.7	60	13	60	6	1.5	
70.8	230	51	230	23	5.7	0.02
70.9	140	31	140	14	3.5	0.01
71.0	100	22	100	10	2.5	0.01
71.2	150	33	150	15	3.7	0.01
71.3	155	34	155	15	3.8	0.01
71.4	130	29	130	13	3.2	0.01
71.7	105	23	105	10	2.6	0.01
71.8	135	30	135	14	3.4	0.01
72.1	160	36	160	16	4	0.01
72.2	115	26	115	12	2.9	0.01
72.3	130	29	130	13	3.2	0.01
72.6	100	22	100	10	2.5	0.01
72.8	145	32	145	14	3.6	0.01
72.9	165	37	165	17	4.1	0.01
73.1	120	27	120	12	3	0.01
73.2	135	30	135	14	3.4	0.01
73.3	105	23	105	10	2.6	0.01
73.8	100	22	100	10	2.5	0.01
74.3	130	29	130	13	3.2	0.01
74.8	130	29	130	13	3.2	0.01
75.2	270	60	270	27	6.7	0.02
75.4	170	38	170	17	4.3	0.01
75.6	245	54	245	24	6	0.02
75.7	180	40	180	18	4.5	0.01
75.8	110	24	110	11	2.7	0.01
75.9	130	29	130	13	3.2	0.01
76.0	160	36	160	16	4	0.01
76.3	170	38	170	17	4.3	0.01
SUB-TOTAL			4805	480	119.6	0.36
TOTAL			7225	723	179.8	0.55

LONGITUDINAL PARTIAL DEPTH PATCHING - SOUTHBOUND						
LOCATION	LENGTH	AREA	LONGITUDINAL PARTIAL DEPTH REMOVAL 2"	BIT MAT (TACK COAT)	LONGITUDINAL PARTIAL DEPTH PATCHING	MIX FOR CRACKS, JOINTS & FLGWYS
MILE POST	FOOT	SQ YD	FOOT	POUND	TON	TON
PASSING LANE						
70.1	260	58	260	26	6.5	0.02
70.2	120	27	120	12	3	0.01
70.3	80	18	80	8	2	0.01
70.4	240	53	240	24	5.9	0.02
70.5	35	8	35	4	0.9	
70.6	120	27	120	12	3	0.01
70.7	100	22	100	10	2.5	0.01
70.8	75	17	75	8	1.9	0.01
70.9	90	20	90	9	2.2	0.01
71.0	340	76	340	34	8.5	0.02
71.1	300	67	300	30	7.5	0.02
71.2	135	30	135	14	3.4	0.01
71.3	120	27	120	12	3	0.01
71.4	30	7	30	3	0.8	
71.5	240	53	240	24	5.9	0.02
71.6	30	7	30	3	0.8	
71.7	20	4	20	2	0.4	
71.8	125	28	125	13	3.1	0.01
71.9	160	36	160	16	4	0.01
72.0	70	16	70	7	1.8	
72.1	10	2	10	1	0.2	
72.4	10	2	10	1	0.2	
72.5	80	18	80	8	2	0.01
73.2	40	9	40	4	1	
73.3	40	9	40	4	1	
74.1	195	43	195	19	4.8	0.01
74.2	330	73	330	33	8.2	0.02
74.3	110	24	110	11	2.7	0.01
74.4	80	18	80	8	2	0.01
74.5	70	16	70	7	1.8	
74.8	20	4	20	2	0.4	
75.1	70	16	70	7	1.8	
75.8	80	18	80	8	2	0.01
SUB-TOTAL			3825	384	95.2	0.27
DRIVING LANE						
70.1	150	33	150	15	3.7	0.01
70.2	80	18	80	8	2	0.01
70.3	20	4	20	2	0.4	
70.4	80	18	80	8	2	0.01
70.5	120	27	120	12	3	0.01
70.6	140	31	140	14	3.5	0.01
70.7	130	29	130	13	3.2	0.01
70.8	130	29	130	13	3.2	0.01
70.9	120	27	120	12	3	0.01
71.0	240	53	240	24	5.9	0.02
71.1	90	20	90	9	2.2	0.01
71.3	50	11	50	5	1.2	
71.4	140	31	140	14	3.5	0.01
71.6	80	18	80	8	2	0.01
71.7	40	9	40	4	1	
71.8	230	51	230	23	5.7	0.02
71.9	150	33	150	15	3.7	0.01
72.0	75	17	75	8	1.9	0.01
72.1	266	59	266	27	6.6	0.02
72.4	80	18	80	8	2	0.01
72.5	200	44	200	20	4.9	0.01
73.0	15	3	15	1	0.3	
73.2	40	9	40	4	1	
73.3	250	56	250	25	6.3	0.02
73.5	30	7	30	3	0.8	
74.1	15	3	15	1	0.3	
74.2	30	7	30	3	0.8	
74.3	130	29	130	13	3.2	0.01
74.4	90	20	90	9	2.2	0.01
74.5	160	36	160	16	4	0.01
74.6	160	36	160	16	4	0.01
74.7	10	2	10	1	0.2	
74.8	15	3	15	1	0.3	
75.1	100	22	100	10	2.5	0.01
75.3	36	8	36	4	0.9	0
75.8	120	27	120	12	3	0.01
75.9	80	18	80	8	2	0.01
76.0	120	27	120	12	3	0.01
76.2	150	33	150	15	3.7	0.01
76.3	50	11	50	5	1.2	
76.4	60	13	60	6	1.5	
76.5	65	14	65	6	1.6	
SUBTOTAL			4337	433	107.4	0.32
TOTAL			8162	817	202.6	0.59

FILE NAME =	USER NAME = NOLASCOCJ	DESIGNED -	REVISED -
pw:\planroom\dot\illinois.gov\PWDOT\Documents\DOT	Files\District 3\Projects\D366J85\CADData\D366J85-sht-details.d	DRAWN -	REVISED -
Default	PLOT SCALE = 100,0000' / in.	CHECKED -	REVISED -
	PLOT DATE = 3/27/2019	DATE -	REVISED -

**STATE OF ILLINOIS  
DEPARTMENT OF TRANSPORTATION**

**LONGITUDINAL PARTIAL DEPTH  
PATCHING - NORTHBOUND SCHEDULE**

SCALE: SHEET 2 OF 2 SHEETS STA. TO STA.

F.A.I. RTE.	SECTION	COUNTY	TOTAL SHEETS	SHEET NO.
39	(50-8)PP	LASALLE	15	7
CONTRACT NO. 66J85				
ILLINOIS		FED. AID PROJECT		

CRACK ROUTING AND SEALING SCHEDULE				
LOCATION	LONGITUDINAL CRACK ROUTING (PAVEMENT)	TRANSVERSE CRACK ROUTING (PAVEMENT)	LONGITUDINAL CRACK FILLING	TRANSVERSE CRACK FILLING
MP TO MP	FOOT	FOOT	POUND	POUND
SOUTHBOUND				
70.0 TO 71.0	16350	43032	5723	15061
71.0 TO 72.0	16040	53616	5614	18766
72.0 TO 73.0	14036	35760	4913	12516
73.0 TO 74.0	16416	55512	5746	19429
74.0 TO 75.0	17343	36528	6070	12785
75.0 TO 76.0	16225	35880	5679	12558
76.0 TO 76.5	8290	27144	2902	9500
SUB-TOTAL	104700	287472	36647	100615
NORTHBOUND				
70.0 TO 71.0	16419	23400	5747	8190
71.0 TO 72.0	16545	28512	5791	9979
72.0 TO 73.0	16631	36096	5821	12634
73.0 TO 74.0	16006	32880	5602	11508
74.0 TO 75.0	16098	28416	5634	9946
75.0 TO 76.0	16288	37464	5701	13112
76.0 TO 76.5	8040	13536	2814	4738
SUB-TOTAL	106027	200304	37110	70106
TOTAL	210727	487776	73757	170721

PAVEMENT MARKING SCHEDULE					
LOCATION	LENGTH	POLYUREA PVMT MRK TYPE I		RAISED REFLECTIVE MARKER	RAISED REFLECTIVE MARKER REMOVAL
		LINE 4" WHITE	LINE 6" WHITE		
MP TO MP	FOOT	FOOT	FOOT	EACH	EACH
SOUTHBOUND					
70.0 TO 71.0	222	222	10	21	21
71.0 TO 72.0	100	100	10		
72.0 TO 73.0	54	54	10		
73.0 TO 74.0	186	186	13		
74.0 TO 75.0	77	77	10		
75.0 TO 76.0	44	44			
76.0 TO 76.5	75	75	10		
SUB-TOTAL		758	63	21	21
NORTHBOUND					
70.0 TO 71.0	135	135	10	20	20
71.0 TO 72.0	116	116	10		
72.0 TO 73.0	235	235	10		
73.0 TO 74.0	96	96	10		
74.0 TO 75.0	89	89	10		
75.0 TO 76.0	147	147	11		
76.0 TO 76.5	6	6			
SUB-TOTAL		824	61	20	20
TOTAL		1582	124	41	41



PATCHING SCHEDULE - NORTHBOUND														
PASSING LANE							DRIVING LANE							
LOCATION	LENGTH	CLASS A PATCHES		PATCH REINF.	SAW CUTS	TIE BARS 3/4"	LOCATION	LENGTH	CLASS A PATCHES			PATCH REINF.	SAW CUTS	TIE BARS 3/4"
		TYPE II 10"	TYPE IV 10"						TYPE II 10"	TYPE III 10"	TYPE IV 10"			
MILE POST	FOOT	SQ YD	SQ YD	SQ YD	FOOT	EACH	MILE POST	FOOT	SQ YD	SQ YD	SQ YD	SQ YD	FOOT	EACH
70.4	6	8		8	36	46	70.4	6	8			8	36	46
70.4	6	8		8	36	46	70.4	6	8			8	36	46
70.8	6	8		8	36	46	70.7	8	11			11	40	46
71.6	8	11		11	40	46	70.8	10	13			13	44	46
71.7	6	8		8	36	46	70.9	15		20		20	54	46
72.2	8	11		11	40	46	70.9	6	8			8	36	46
72.6	8	11		11	40	46	70.9	30			40	40	84	56
73.8	6	8		8	36	46	70.9	6	8			8	36	46
74.7	6	8		8	36	46	70.9	6	8			8	36	46
75.2	10	13		13	44	46	70.9	6	8			8	36	46
75.2	20		27	27	64	46	71.0	8	11			11	40	46
75.4	6	8		8	36	46	71.0	6	8			8	36	46
75.4	6	8		8	36	46	71.1	6	8			8	36	46
SUB-TOTAL		110	27	137	516	598	71.1	6	8			8	36	46
							71.4	6	8			8	36	46
							71.4	6	8			8	36	46
							71.5	6	8			8	36	46
							71.6	8	11			11	40	46
							71.6	6	8			8	36	46
							71.6	8	11			11	40	46
							71.6	6	8			8	36	46
							71.7	6	8			8	36	46
							71.7	6	8			8	36	46
							71.8	6	8			8	36	46
							71.8	6	8			8	36	46
							71.9	10	13			13	44	46
							72.0	10	13			13	44	46
							72.1	8	11			11	40	46
							72.1	8	11			11	40	46
							72.1	6	8			8	36	46
							72.2	20			27	27	64	46
							72.2	6	8			8	36	46
							72.2	6	8			8	36	46
							72.2	6	8			8	36	46
							72.2	6	8			8	36	46
							72.3	25			33	33	74	54
							72.3	15		20		20	54	46
							72.3	6	8			8	36	46
							72.4	15		20		20	54	46
							72.4	6	8			8	36	46
							72.4	25			33	33	74	54
							72.5	6	8			8	36	46
							72.6	8	11			11	40	46
							72.7	6	8			8	36	46
							72.7	25			33	33	74	54
							72.9	6	8			8	36	46
							73.0	10	13			13	44	46
							73.1	6	8			8	36	46
							73.1	6	8			8	36	46
							73.2	6	8			8	36	46
							73.2	6	8			8	36	46
							73.3	6	8			8	36	46
							73.3	6	8			8	36	46
							73.3	6	8			8	36	46
							73.4	6	8			8	36	46
							73.5	6	8			8	36	46
							73.5	6	8			8	36	46
							73.5	6	8			8	36	46
							73.6	6	8			8	36	46
							73.7	6	8			8	36	46
							73.7	6	8			8	36	46
							73.9	6	8			8	36	46
							74.1	6	8			8	36	46
							74.1	6	8			8	36	46
							74.2	6	8			8	36	46
							74.3	8	11			11	40	46
							74.3	15		20		20	54	46
							74.3	6	8			8	36	46
							74.5	6	8			8	36	46
							74.5	6	8			8	36	46
							74.6	6	8			8	36	46
							74.9	6	8			8	36	46
							75.0	6	8			8	36	46
							75.0	6	8			8	36	46
							75.2	10	13			13	44	46
							75.2	20			27	27	64	46
							75.4	6	8			8	36	46
							75.4	6	8			8	36	46
							75.5	6	8			8	36	46
							75.7	15		20		20	54	46
							75.7	30			40	40	84	56
							75.8	6	8			8	36	46
							75.9	6	8			8	36	46
							76.1	6	8			8	36	46
							SUB-TOTAL		625	100	233	958	3452	3908

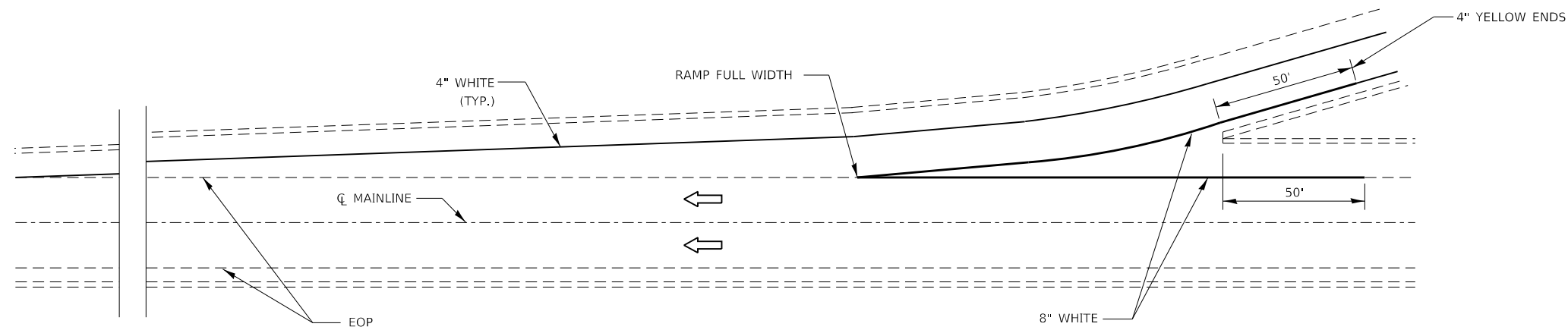
FILE NAME =	USER NAME = NOLASCOCJ	DESIGNED -	REVISED -
pw:\planroom\dot\illinois.gov\PWDOT\Documents\IDOT	Files\District 3\Projects\D366J85\CADData\D366J85-sht-details.d	DRAWN -	REVISED -
Default	PLOT SCALE = 100,0000' / in.	CHECKED -	REVISED -
	PLOT DATE = 3/27/2019	DATE -	REVISED -

**STATE OF ILLINOIS  
DEPARTMENT OF TRANSPORTATION**

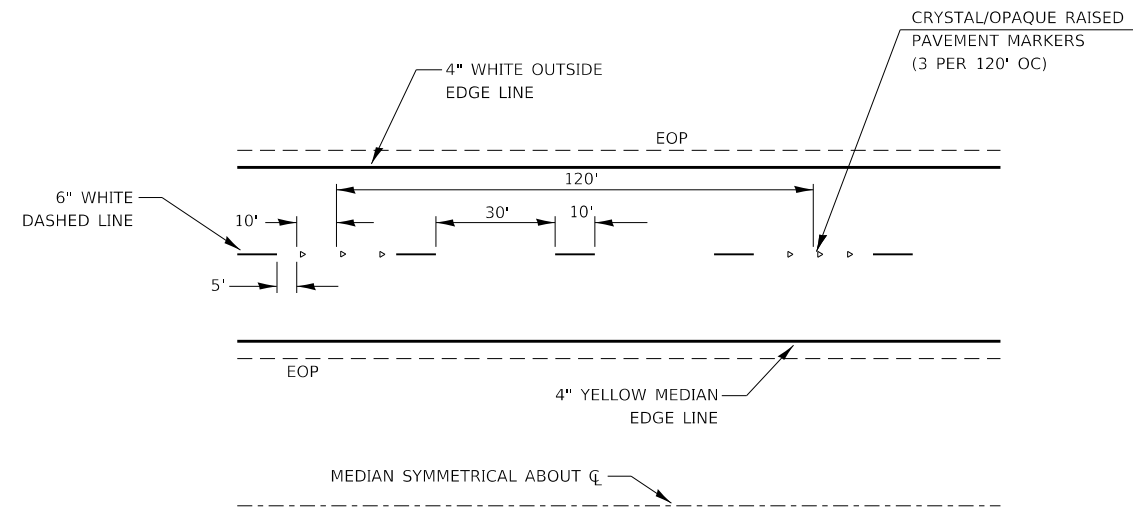
<b>PATCHING CLASS A NORTHBOUND SCHEDULE</b>			
SCALE:	SHEET 1	OF 2 SHEETS	STA. TO STA.

F.A.I. RTE.	SECTION	COUNTY	TOTAL SHEETS	SHEET NO.
39	(50-8)PP	LASALLE	15	9
CONTRACT NO. 66J85				
ILLINOIS FED. AID PROJECT				

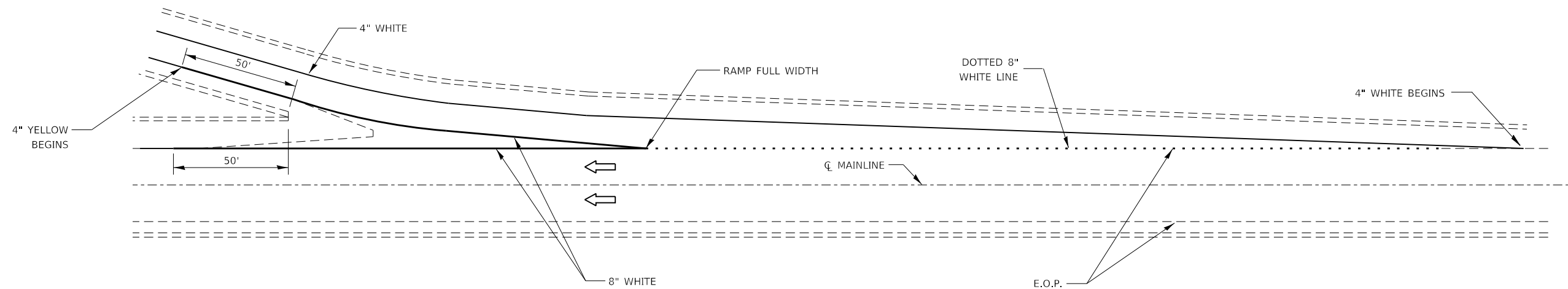
PATCHING SCHEDULE - SOUTHBOUND																
PASSING LANE								DRIVING LANE								
LOCATION	LENGTH	WIDTH	CLASS A PATCHES		PATCH REINF.	SAW CUTS	TIE BARS 3/4"	LOCATION	LENGTH	WIDTH	CLASS A PATCHES			PATCH REINF.	SAW CUTS	TIE BARS 3/4"
			TYPE II 10"	TYPE IV 10"							TYPE II 10"	TYPE III 10"	TYPE IV 10"			
MILE POST	FOOT	FOOT	SQ YD	SQ YD	SQ YD	FOOT	EACH	MILE POST	FOOT	FOOT	SQ YD	SQ YD	SQ YD	SQ YD	FOOT	EACH
70.6	8	12	11		11	40	46	70.1	10	12	13			13	36	46
71.2	8	12	11		11	40	46	70.1	6	12	8			8	36	46
71.7	6	12	8		8	36	46	70.2	8	12	11			11	40	46
72.6	8	12	11		11	40	46	70.2	6	12	8			8	36	46
73.3	10	12	13		13	44	46	70.2	6	12	8			8	36	46
73.3	35	12		47	47	94	57	70.3	6	12	8			8	36	46
73.4	6	12	8		8	36	46	70.3	6	12	8			8	36	46
74.4	6	12	8		8	36	46	70.4	6	12	8			8	36	46
76.4	6	12	8		8	36	46	70.4	6	12	8			8	36	46
SUB-TOTAL			78	47	125	402	425	70.6	10	12	13			13	44	46
								70.7	6	12	8			8	36	46
								70.7	15	12		20		20	54	46
								70.7	30	12			40	40	84	56
								70.8	20	12			27	27	64	46
								70.9	15	12		20		20	54	46
								71.0	6	12	8			8	36	46
								71.0	6	12	8			8	36	46
								71.0	30	12			40	40	84	56
								71.0	6	12	8			8	36	46
								71.0	10	12	13			13	44	46
								71.2	6	12	8			8	36	46
								71.2	6	12	8			8	36	46
								71.2	6	12	8			8	36	46
								71.2	6	12	8			8	36	46
								71.2	6	12	8			8	36	46
								71.2	6	12	8			8	36	46
								71.2	6	12	8			8	36	46
								71.3	6	12	8			8	36	46
								71.5	6	12	8			8	36	46
								71.5	6	12	8			8	36	46
								71.7	8	12	11			11	40	46
								71.7	6	12	8			8	36	46
								71.7	6	12	8			8	36	46
								71.8	6	12	8			8	36	46
								71.8	8	12	11			11	40	46
								72.0	10	12	13			13	44	46
								72.2	6	12	8			8	36	46
								72.2	6	12	8			8	36	46
								72.3	6	12	8			8	36	46
								72.4	6	12	8			8	36	46
								72.7	8	12	11			11	40	46
								72.8	8	12	11			11	40	46
								73.0	6	12	8			8	36	46
								73.1	6	12	8			8	36	46
								73.2	25	12			33	33	74	54
								73.3	18	12		24		24	60	46
								73.3	20	12			27	27	64	46
								73.3	10	12	13			13	44	46
								73.4	35	12			47	47	94	57
								73.9	15	12		20		20	54	46
								74.0	6	12	8			8	36	46
								74.1	20	12			27	27	64	46
								74.2	6	12	8			8	36	46
								74.2	6	12	8			8	36	46
								74.3	6	12	8			8	36	46
								74.3	6	12	8			8	36	46
								74.4	15	12		20		20	54	46
								74.4	6	12	8			8	36	46
								74.9	6	12	8			8	36	46
								75.4	6	12	8			8	36	46
								75.4	6	12	8			8	36	46
								76.0	8	12	11			11	40	46
								76.0	24	12			32	32	72	54
								76.2	6	12	8			8	36	46
								76.2	15	12		20		20	54	46
								76.2	8	12	11			11	40	46
								76.2	8	12	11			11	40	46
								76.2	10	12	13			13	44	46
								76.2	6	12	8			8	36	46
								76.4	6	12	8			8	36	46
								76.5	10	12	13			13	44	46
								SUB-TOTAL			491	124	273	888	2954	3175



**TYPICAL PAVEMENT MARKING FOR ENTRANCE RAMP TERMINALS**

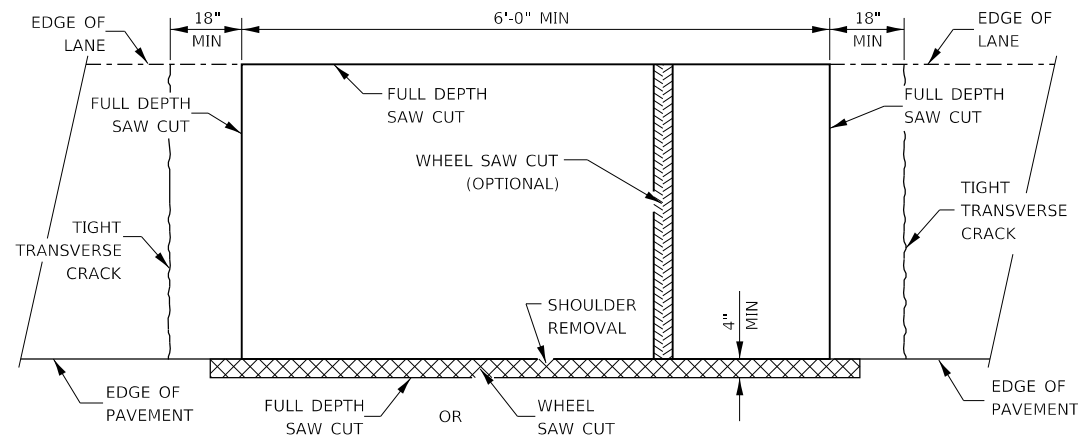


**TYPICAL PAVEMENT MARKINGS**

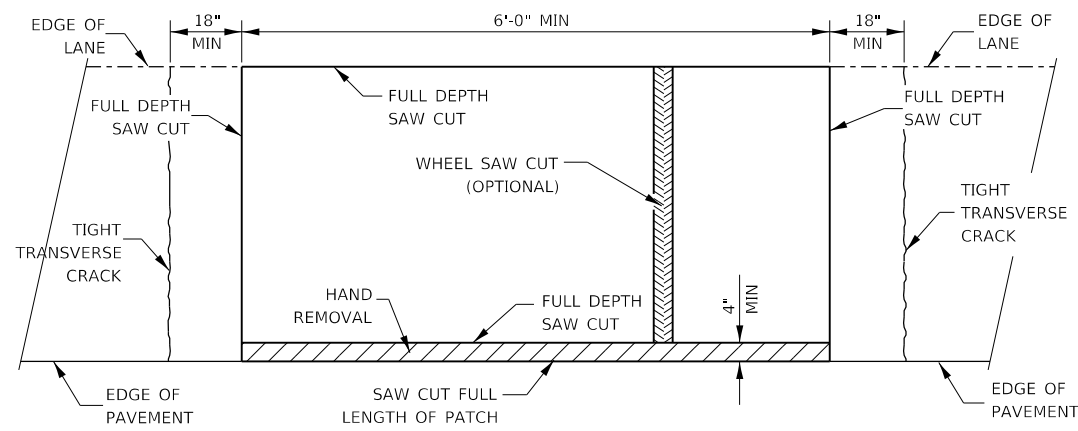


**TYPICAL PAVEMENT MARKINGS FOR EXIT RAMP TERMINALS**

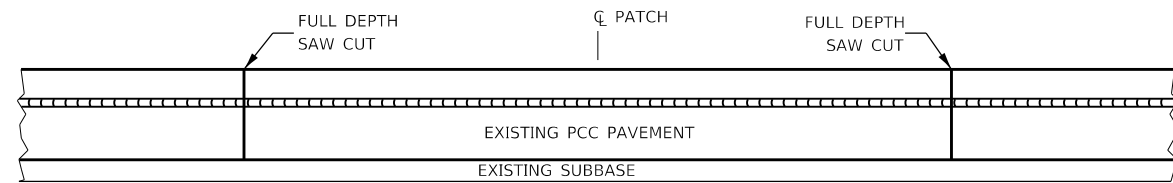
FILE NAME =	USER NAME = NOLASCOCJ	DESIGNED -	REVISED -	<b>STATE OF ILLINOIS DEPARTMENT OF TRANSPORTATION</b>	<b>PAVEMENT MARKING DETAILS</b>			F.A.I. RTE.	SECTION	COUNTY	TOTAL SHEETS	SHEET NO.
pw:\planroom\dot\illinois\gov\PWDOT\Documents\IDOT\Files\District 3\Projects\D366J85\CADData\D366J85-shd-details.d	DRAWN -	REVISED -	REVISED -					39	(50-8)PP	LASALLE	15	11
Default	PLOT SCALE = 100.0000' / in.	CHECKED -	REVISED -		CONTRACT NO. 66J85							
	PLOT DATE = 3/27/2019	DATE -	REVISED -		SCALE:	SHEET 1	OF 1	SHEETS	STA.	TO STA.	ILLINOIS	FED. AID PROJECT



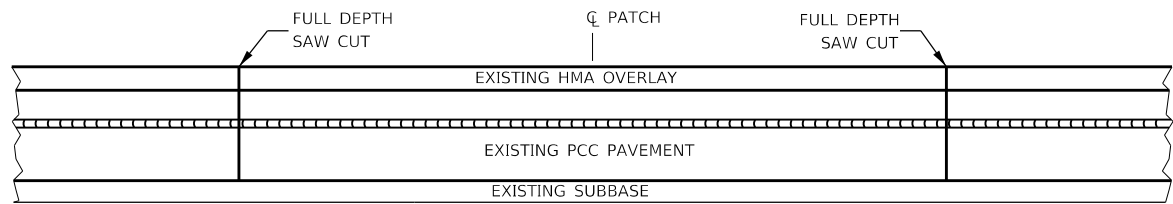
**PAVEMENT SAWING DETAIL**  
(HMA SHOULDER)



**PAVEMENT SAWING DETAIL**  
(PCC SHOULDER)

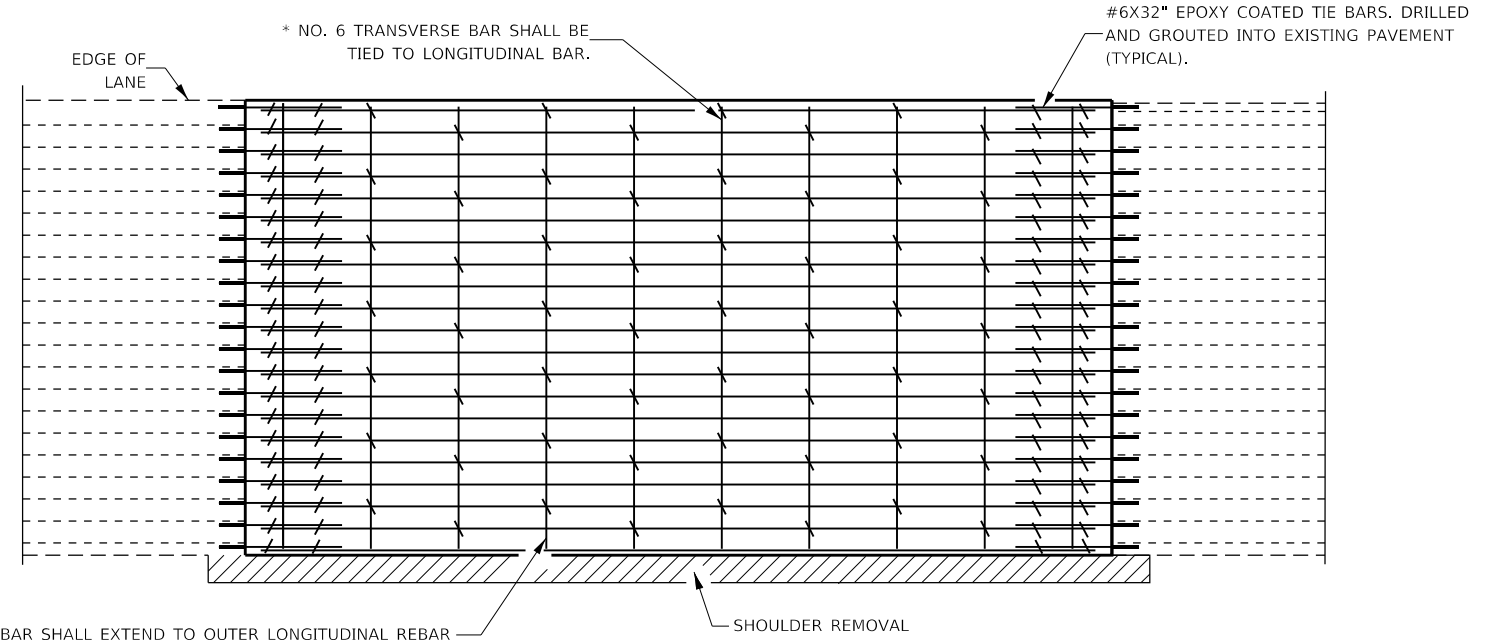


**EXISTING PAVEMENT WITHOUT HMA SURFACE**

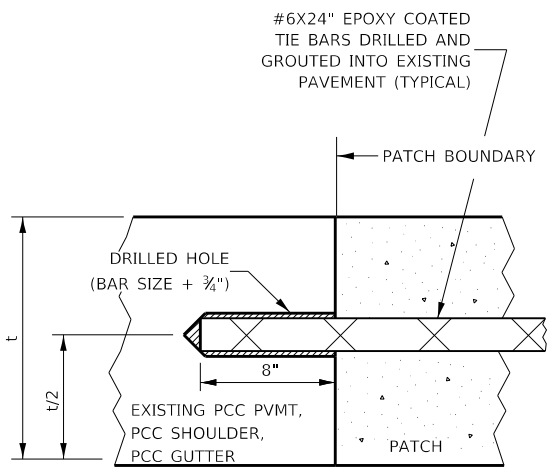


**EXISTING PAVEMENT WITH HMA SURFACE**

**PAVEMENT SAWING DETAIL FOR CLASS A PATCHING  
(CRC PAVEMENT)**



**PAVEMENT REINFORCEMENT DETAIL**



**LONGITUDINAL CONSTRUCTION JOINT**

PATCHES MORE THAN 20' IN LENGTH SHALL BE TIED TO ADJACENT PAVEMENT, PCC SHOULDERS OR PCC CURB AND GUTTER WITH #6x24" EPOXY COATED TIE BARS AT 36" CENTERS.

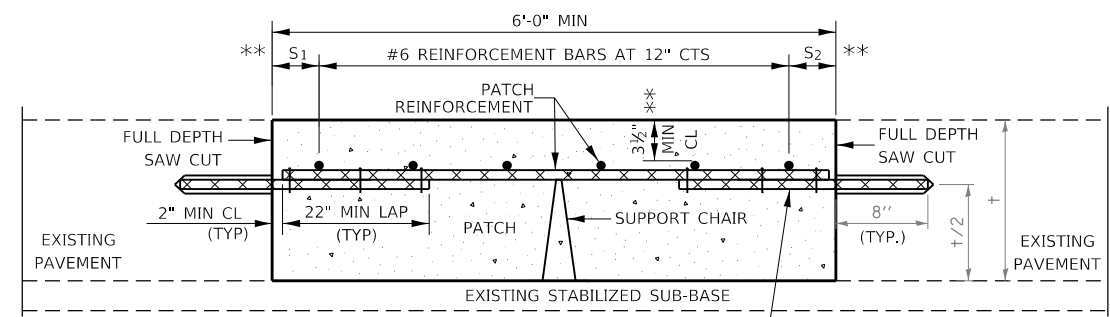
**NOTES:**

EXISTING LONGITUDINAL REINFORCEMENT SPACING; ±6".

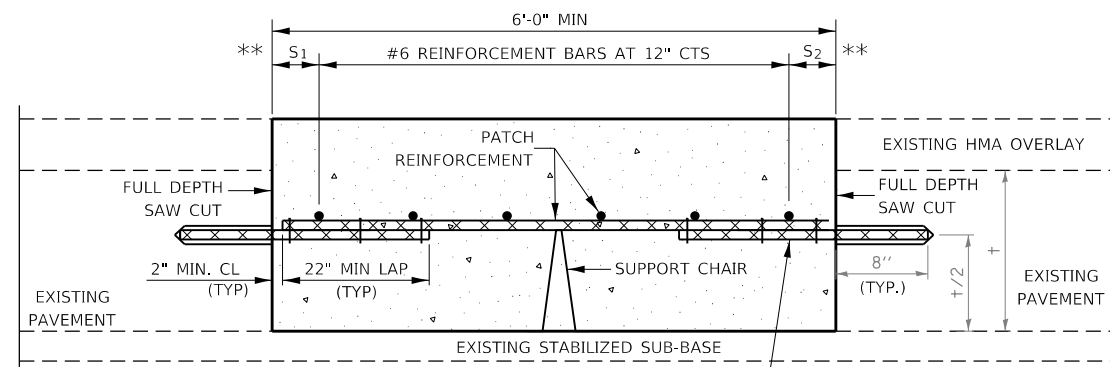
SPACING OF NEW LONGITUDINAL REINFORCEMENT AND NEW LONGITUDINAL TIE BARS SHALL MATCH SPACING OF EXISTING REINFORCEMENT AND SHALL BE TIED TOGETHER WITH A MINIMUM OF TWO TIES PER BAR.

\* EVERY THIRD INTERSECTION MUST BE TIED, WHEN THE MINIMUM CLEARANCE CANNOT BE OBTAINED WITH THE TRANSVERSE REBAR ON TOP, THEN THE TRANSVERSE REBAR SHALL BE TIED TO THE BOTTOM OF THE LONGITUDINAL REBAR.

\*\* VARIABLE: WHERE S<sub>1</sub> AND S<sub>2</sub> ARE 2½" MIN. AND 12" MAX.



**WITHOUT HMA OVERLAY**



**WITH HMA OVERLAY**

**PATCHING DETAIL FOR CLASS A PATCHING  
(CRC PAVEMENT)**

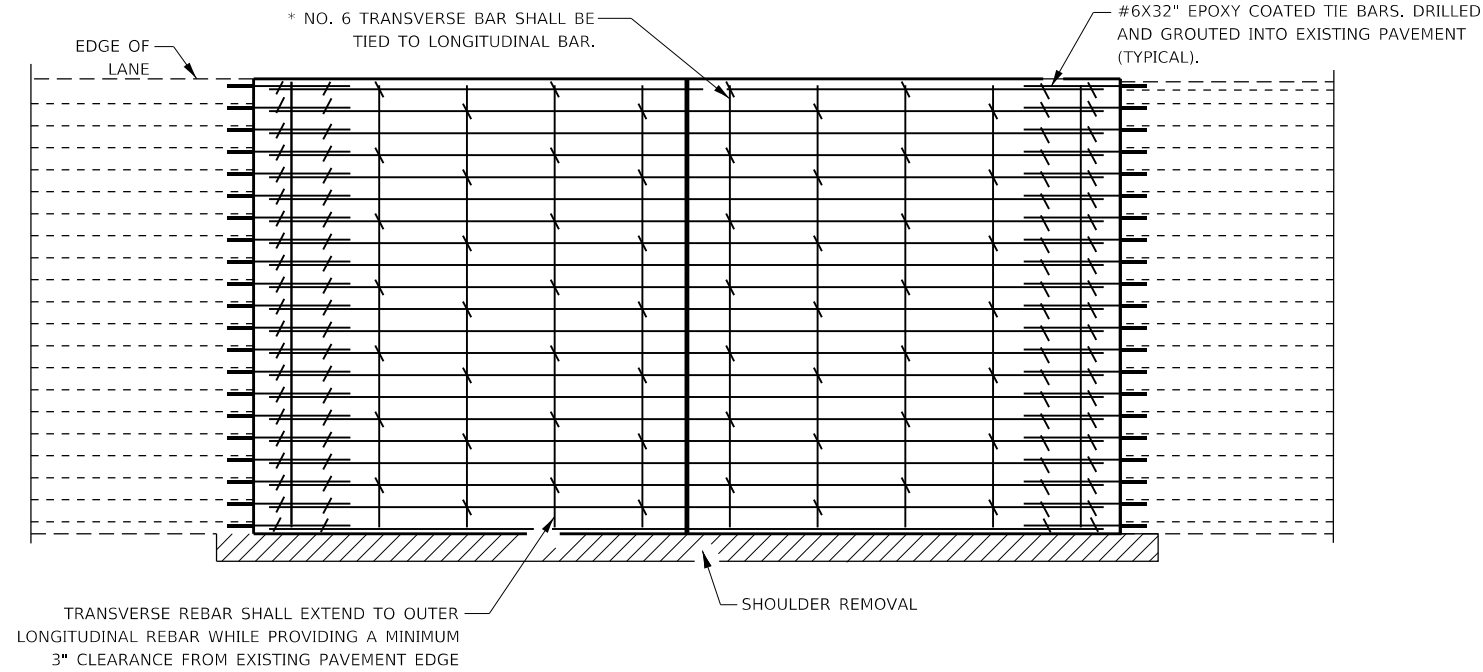
FILE NAME =	USER NAME = NOLASCOCJ	DESIGNED -	REVISED -
pw:\planroom\dot\illinois\gov\PWDOT\Documents\IDOT\Office\District 3\Projects\D366J85\CADData\D366J85-shd-details.dwg		DRAWN -	REVISED -
Default	PLOT SCALE = 100,0000' / in.	CHECKED -	REVISED -
	PLOT DATE = 3/27/2019	DATE -	REVISED -

**STATE OF ILLINOIS  
DEPARTMENT OF TRANSPORTATION**

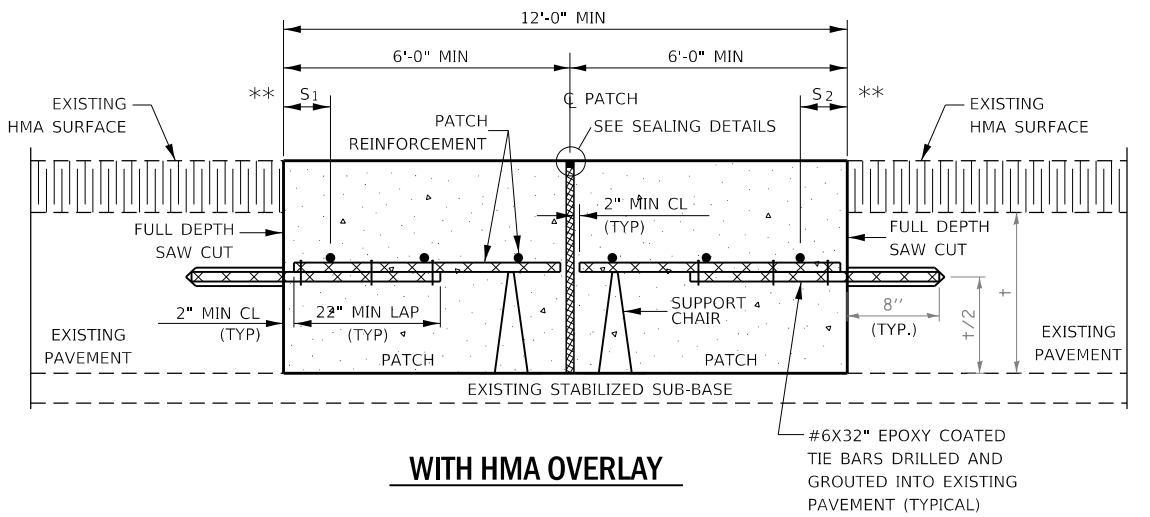
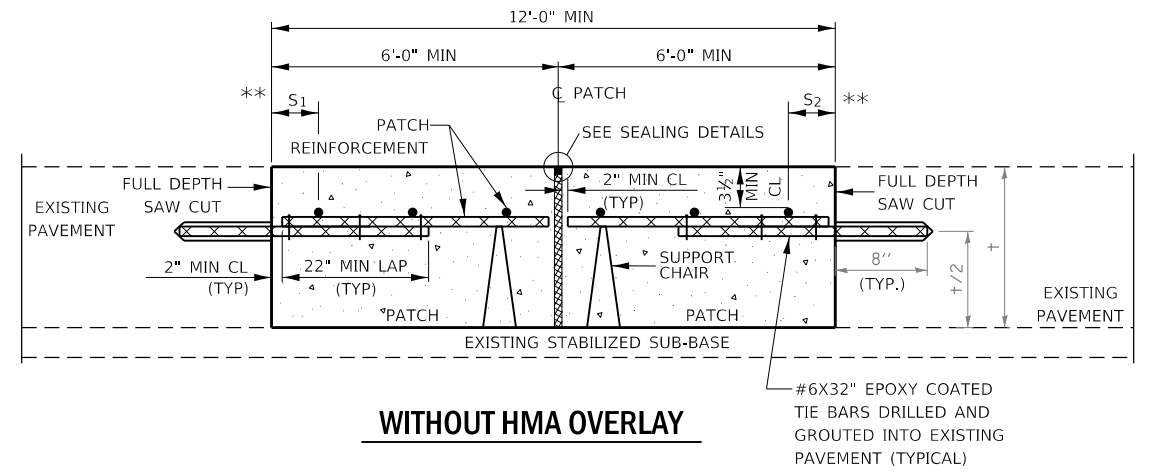
**CLASS A PATCHING  
DETAILS**

SCALE: SHEET 1 OF 2 SHEETS STA. TO STA.

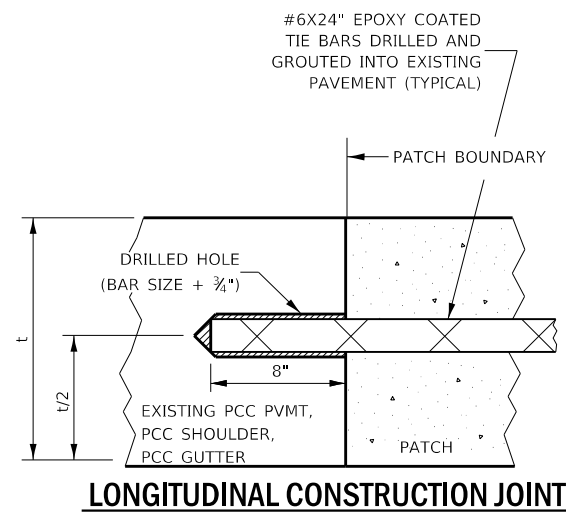
F.A.I. RTE.	SECTION	COUNTY	TOTAL SHEETS	SHEET NO.
39	(50-8)PP	LASALLE	15	12
CONTRACT NO. 66J85				
ILLINOIS FED. AID PROJECT				



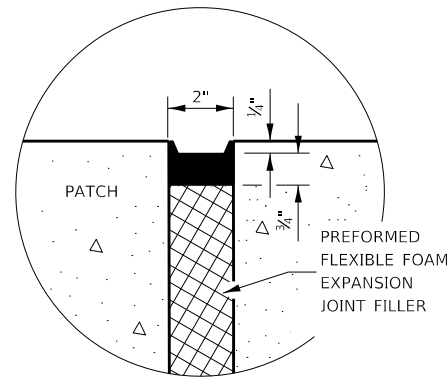
**PAVEMENT REINFORCEMENT DETAIL**



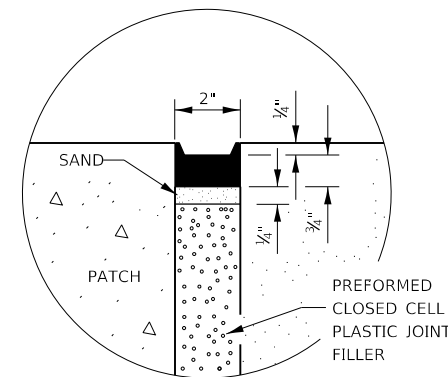
**CLASS A PATCH WITH EXPANSION JOINT**



**LONGITUDINAL CONSTRUCTION JOINT**



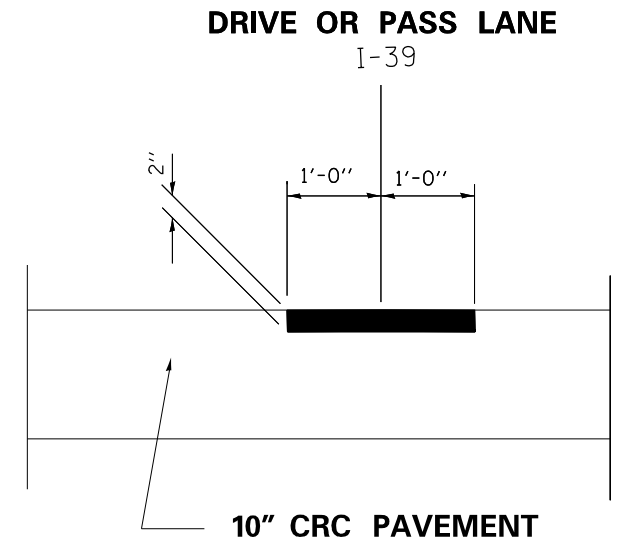
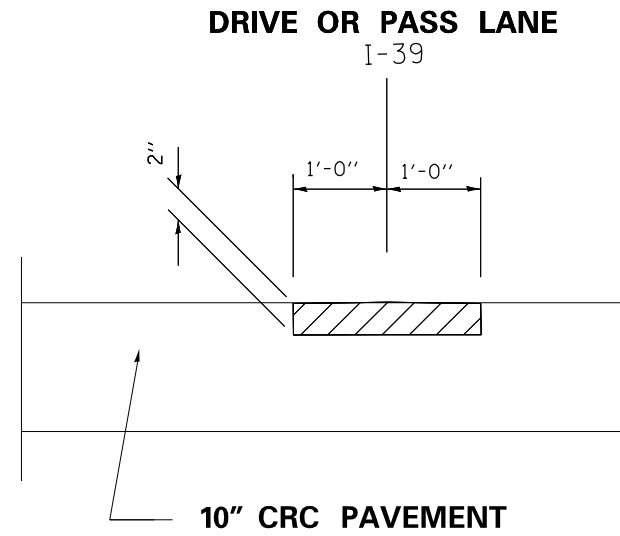
**SEALING DETAIL**



**SEALING DETAIL**

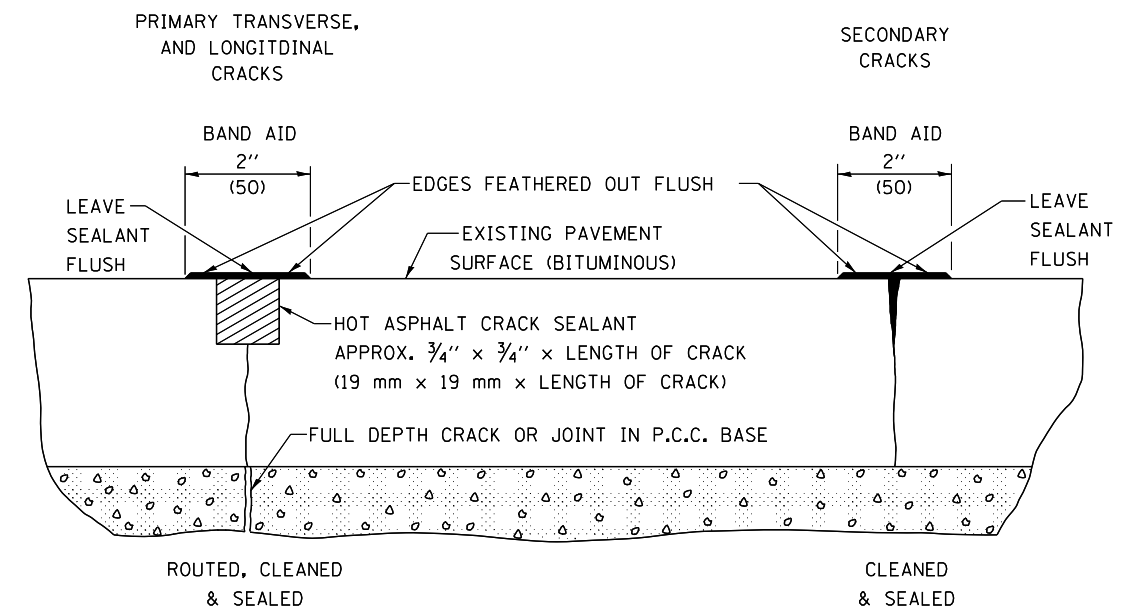
- NOTES:**
- EXISTING LONGITUDINAL REINFORCEMENT SPACING;  $\pm 6\frac{1}{8}$ "
  - SPACING OF NEW LONGITUDINAL REINFORCEMENT AND NEW LONGITUDINAL TIE BARS SHALL MATCH SPACING OF EXISTING REINFORCEMENT AND SHALL BE TIED TOGETHER WITH A MINIMUM OF TWO TIES PER BAR.
  - SUPPORT CHAIRS SHALL BE REQUIRED WHENEVER PATCH LENGTH EXCEEDS 6'-0"
  - \* EVERY THIRD INTERSECTION MUST BE TIED. WHEN THE MINIMUM CLEARANCE CANNOT BE OBTAINED WITH THE TRANSVERSE REBAR ON TOP, THEN THE TRANSVERSE REBAR SHALL BE TIED TO THE BOTTOM OF THE LONGITUDINAL REBAR.
  - \*\* VARIABLES WHERE S<sub>1</sub> AND S<sub>2</sub> ARE 2½" MIN. AND 12" MAX.

FILE NAME =	USER NAME = NOLASCOCJ	DESIGNED -	REVISED -	<b>STATE OF ILLINOIS DEPARTMENT OF TRANSPORTATION</b>	<b>CLASS A PATCHING DETAILS</b>			F.A.I. RTE.	SECTION	COUNTY	TOTAL SHEETS	SHEET NO.
pw:\planroom\dot\illinois\gov\PWDOT\Documents\IDOT	Office\District 3\Projects\D366J85\CADData\D366J85-shd-details.d	DRAWN -	REVISED -					39	(50-8)PP	LASALLE	15	13
Default	PLOT SCALE = 100,0000' / in.	CHECKED -	REVISED -					CONTRACT NO. 66J85				
	PLOT DATE = 3/27/2019	DATE -	REVISED -					SCALE:	SHEET 2 OF 2 SHEETS	STA.	TO STA.	ILLINOIS FED. AID PROJECT

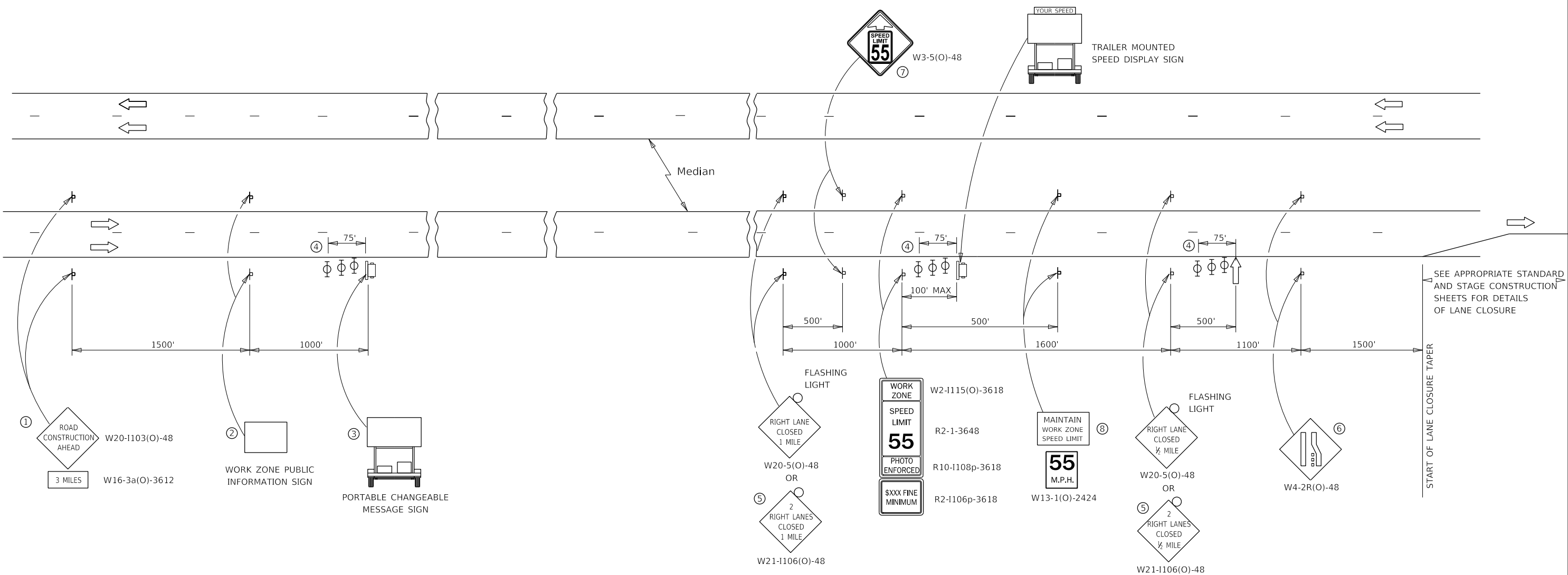


**LONGITUDINAL PARTIAL DEPTH REMOVAL**

**\* SEE SCHEDULE FOR LOCATIONS**

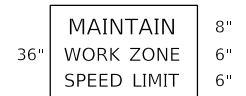


FILE NAME =	USER NAME = NOLASCOCJ	DESIGNED -	REVISED -	<b>STATE OF ILLINOIS DEPARTMENT OF TRANSPORTATION</b>	<b>LONGITUDINAL PARTIAL DEPTH PATCHING &amp; CRACK SEALING DETAILS</b>	F.A.I. RTE.	SECTION	COUNTY	TOTAL SHEETS	SHEET NO.	
pw:\planroom\dot\illinois\gov\PWIDOT\Documents\IDOT	Office\District 3\Projects\D366J85\CADData\D366J85-sht-details.d	DRAWN -	REVISED -			39	(50-8)PP	LASALLE	15	14	
Default	PLOT SCALE = 100.0000' / in.	CHECKED -	REVISED -			CONTRACT NO. 66J85					
	PLOT DATE = 3/27/2019	DATE -	REVISED -			SCALE:	SHEET 1	OF 1	SHEETS	STA.	TO STA.



SEE APPROPRIATE STANDARD AND STAGE CONSTRUCTION SHEETS FOR DETAILS OF LANE CLOSURE

- ① THE ROAD CONSTRUCTION AHEAD SIGN SHALL BE LOCATED 3 MILES IN ADVANCE OF THE PROJECT LIMITS.
- ② THE MESSAGE AND SIZE OF THE WORK ZONE PUBLIC INFORMATION SIGN SHALL BE AS SPECIFIED BY THE DEPARTMENT.
- ③ TO BE PLACED IN THE MEDIAN WHEN FEASIBLE. THE MESSAGE BOARD SHALL BE USED TO DISPLAY STATUS OF LANES WITHIN THE PROJECT. THE PRIMARY MESSAGES SHALL BE:  
"RIGHT LANE CLOSED" / " x MILES AHEAD"  
"LEFT LANE CLOSED" / " x MILES AHEAD"  
"ALL LANES OPEN"
- ④ THREE, TYPE II BARRICADES, DRUMS, OR VERTICAL BARRICADES AT 25' CENTERS.
- ⑤ THIS SIGN SHALL BE USED WHEN 2 LANES ARE CLOSED.
- ⑥ WHEN THE LEFT LANE IS CLOSED, SWITCH THESE TWO SIGNS AND THE DIRECTION OF THE MERGE ARROW.
- ⑦ THIS SIGN SHALL ONLY BE USED IF THE EXISTING SPEED LIMIT IS GREATER THAN 65 MPH.
- ⑧ 48"x36" FLUORESCENT ORANGE SIGN WITH BLACK LETTERS.



- ↑ ARROW BOARD
- ☐ PORTABLE CHANGEABLE MESSAGE SIGN
- ⊥ SIGN
- ⊕ TYPE II BARRICADE, DRUM, OR VERTICAL BARRICADE WITH MONODIRECTIONAL FLASHING LIGHT

**GENERAL NOTE:**

THIS STANDARD IS USED WHERE AT ANY TIME A LANE IS CLOSED ON A FREEWAY/EXPRESSWAY.

WHEN THE LEFT LANE IS CLOSED, LEFT LANE CLOSED SIGNS SHALL BE SUBSTITUTED FOR THE RIGHT LANE CLOSED SIGNS.

THE FIRST TWO SIGNS AND THE MESSAGE BOARD ARE STATIONARY. THE OTHER SIGNS AND ARROWBOARDS SHALL BE MOVED AS NECESSARY TO MAINTAIN THE REQUIRED DISTANCE FROM THE START OF THE LANE CLOSURE TAPER(S).

SEE SPECIAL PROVISIONS.

ALL DIMENSIONS ARE IN INCHES UNLESS OTHERWISE SHOWN.

FILE NAME =	USER NAME = OTEROFEBUSA	DESIGNED -	REVISED -	<b>STATE OF ILLINOIS DEPARTMENT OF TRANSPORTATION</b>	<b>STANDARD 701400 (SPECIAL)</b>			F.A.I. RTE.	SECTION	COUNTY	TOTAL SHEETS	SHEET NO.
cc:\pw_work\pwidofoterofebusa\0601636\0366J85-sht-de		DRAWN -	REVISED -					39	(50-8)PP	LASALLE	15	15
\$MODELNAME\$	PLOT SCALE = 100.0000' / in.	CHECKED -	REVISED -					CONTRACT NO. 66J85				
	PLOT DATE = 3/29/2019	DATE -	REVISED -					SCALE: _____	SHEET 1	OF 1	SHEETS	STA. _____