

STATE OF ILLINOIS
DEPARTMENT OF TRANSPORTATION

F.A.P. RTE.	SECTION	COUNTY	TOTAL SHEETS	SHEET NO.
332	(7) SFY, N-2	ILLINOIS	21	1
			CONTRACT NO. 66K23	
*KANKAKEE & WILL				

INDEX OF SHEETS

- 1 COVER SHEET
- 2 GENERAL NOTES
- 3-5 SUMMARY OF QUANTITIES
- 6-7 TYPICAL SECTIONS
- 8-9 SCHEDULES
- 10 REMOVAL PLAN
- 11 PROPOSED PLAN
- 12 DRAINAGE PLAN
- 13 PAVEMENT MARKING PLAN
- 14 LANDSCAPING PLAN
- 15-18 CROSS SECTIONS
- 19-21 DETAILS

HIGHWAY STANDARDS

- 000001-07 STANDARD SYMBOLS, ABBREVIATIONS AND PATTERNS
- 001001-02 AREAS OF REINFORCEMENT BARS
- 001006 DECIMAL OF AN INCH AND OF A FOOT
- 280001-07 TEMPORARY EROSION CONTROL SYSTEMS
- 542301-03 PRECAST REINFORCED CONCRETE FLARED END SECTION
- 642006 SHOULDER RUMBLE STRIPS, 8 INCH
- 701001-02 OFF-ROAD OPERATIONS 2L, 2W, MORE THAN 15' (4.5 m) AWAY
- 701006-05 OFF-ROAD OPERATIONS 2L, 2W, 15' (4.5 m) TO 24" (600 mm) FROM PAVEMENT EDGE
- 701201-05 LANE CLOSURE, 2L, 2W, DAY ONLY, FOR SPEEDS \geq 45 MPH
- 701306-04 LANE CLOSURE, 2L, 2W, SLOW MOVING OPERATIONS DAY ONLY, FOR SPEEDS \geq 45 MPH
- 701311-03 LANE CLOSURE, 2L, 2W, MOVING OPERATIONS - DAY ONLY
- 701326-04 LANE CLOSURE, 2L, 2W, PAVEMENT WIDENING, FOR SPEEDS \geq 45 MPH
- 701901-08 TRAFFIC CONTROL DEVICES

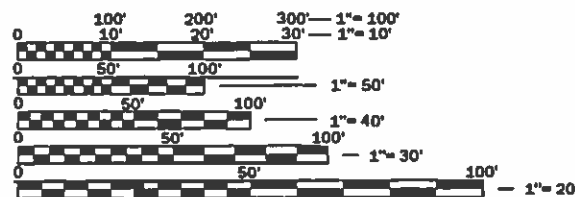
PROPOSED HIGHWAY PLANS

FAP ROUTE 332 (IL 1)
SECTION (7) SFY, N-2
PROJECT: HSIP - N1NR (397)
INTERSECTION RADII WIDENING
KANKAKEE, WILL COUNTIES

C-93-103-19

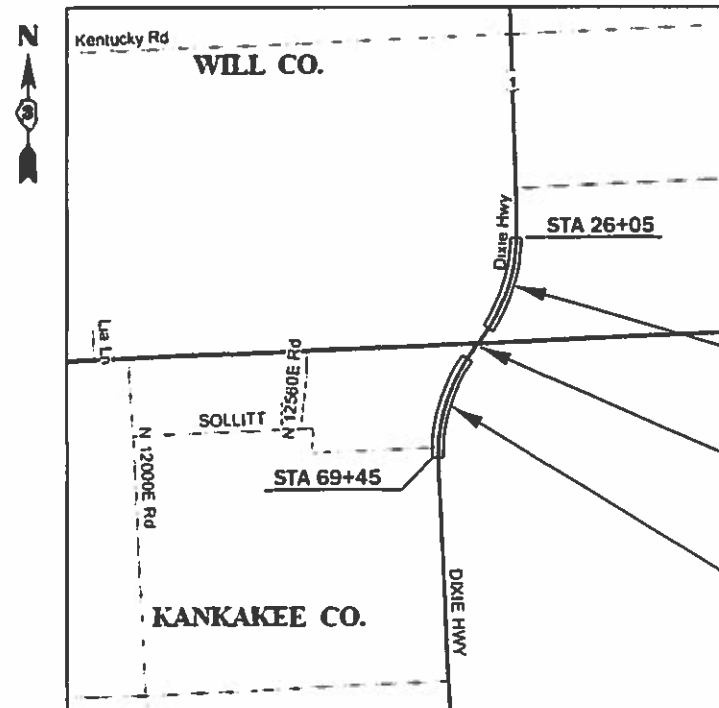


IL 1 - OTHER ARTERIAL
2017 ADT = 5,350
P.V. = 73.1% S.U. = 4.5% M.U. = 22.4%



FULL SIZE PLANS HAVE BEEN PREPARED USING STANDARD ENGINEERING SCALES. REDUCED SIZED PLANS WILL NOT CONFORM TO STANDARD SCALES. IN MAKING MEASUREMENTS ON REDUCED PLANS, THE ABOVE SCALES MAY BE USED.

J.U.L.I.E.
JOINT UTILITY LOCATION INFORMATION FOR EXCAVATION
1-800-892-0123
OR 811



CENTERLINE MILL AND RESURFACE
STA 26+05 TO STA 45+24

PAVEMENT WIDENING
NW, SW, & SE QUADRANTS

CENTERLINE MILL AND RESURFACE
STA 49+17 TO STA 69+45

PROJECT ENGINEER: JOE KANNEL, P.E.
UNIT CHIEF: MARC BUDZYNSKI, P.E.
DISTRICT 3 NO. (815) 434-6131
CONTRACT NO. 66K23

GROSS LENGTH = 4,340 FT. = 0.822 MILES
NET LENGTH = 4,200 FT. = 0.795 MILES

STATE OF ILLINOIS
DEPARTMENT OF TRANSPORTATION

SUBMITTED 04/05/2019
Karin Haskel
REGIONAL ENGINEER

May 10 2019
Paul P. Chaf
ENGINEER OF DESIGN AND ENVIRONMENT

May 10 2019
Paul P. Chaf
DIRECTOR OF HIGHWAYS PROJECT IMPLEMENTATION

PRINTED BY THE AUTHORITY
OF THE STATE OF ILLINOIS

GENERAL NOTES

THE THICKNESS OF HMA SHOWN ON THE PLANS IS THE NOMINAL THICKNESS. DEVIATIONS FROM THE NOMINAL THICKNESS WILL BE PERMITTED WHEN SUCH DEVIATIONS OCCUR DUE TO IRREGULARITIES IN THE EXISTING SURFACE OR BASE ON WHICH THE HMA IS PLACED.

THE HMA SURFACE OF ALL MAILBOX TURNOUTS, PRIVATE ENTRANCES, COMMERCIAL ENTRANCES, AND SIDE ROADS SHALL BE MADE NEATLY, IN A WORKMANLIKE MANNER, AND SHALL ACCURATELY CONFORM TO THE SHAPES AND DIMENSIONS SHOWN ON THE PLAN DETAILS. IF REQUIRED BY THE ENGINEER, THE CONTRACTOR SHALL SAW CUT THE HMA SURFACE TO CONFORM TO THE SHAPES AND DIMENSIONS SHOWN ON THE PLAN DETAILS. THIS WORK WILL BE INCLUDED IN THE COST OF THE HMA SURFACE.

BEFORE ORDERING PIPE CULVERTS OR PIPE DRAINS, THE CONTRACTOR SHALL CONSULT THE ENGINEER FOR EXACT LENGTHS.

THE ENGINEER WILL BE THE SOLE JUDGE CONCERNING CURING TIME FOR THE VARIOUS HMA LIFTS.

FOR STABILIZATION, ALL TYPE III BARRICADES WILL REQUIRE A MINIMUM OF FOUR SAND BAGS PER BARRICADE.

SEEDING WILL NOT BE PERMITTED AT ANY TIME WHEN THE GROUND IS FROZEN, WET, OR IN AN UNTILLABLE CONDITION. LOCATIONS TO BE SEEDED WILL BE DETERMINED BY THE ENGINEER.

THE FINISHED EARTHWORK SHALL HAVE A VEGETATION SUSTAINING SOIL COVERING THE TOP FOUR INCHES (100 MILLIMETERS) IN AREAS TO BE SEEDED OR SODDED. THE VEGETATION SUSTAINING SOIL REQUIRED WILL NOT BE PAID FOR SEPARATELY BUT WILL BE INCLUDED IN THE COST OF EARTH EXCAVATION.

ALL EXCAVATED MATERIAL, WHICH INCLUDES DIGGING OR GRADING OF ANY SOIL OR FILL MATERIAL, WITH THE EXCEPTION OF AGGREGATE FILLS, MUST BE INCORPORATED WITHIN THE IDOT RIGHT OF WAY DUE TO ENVIRONMENTAL DOCUMENTATION REQUIREMENTS.

ALL ELEVATIONS REFERRING TO U.S.G.S. MEAN SEA LEVEL DATUM.

ABANDONED UNDERGROUND UTILITIES THAT CONFLICT WITH CONSTRUCTION SHALL BE DISPOSED OF OUTSIDE THE LIMITS OF THE RIGHT OF WAY ACCORDING TO ARTICLE 202.03 OF THE STANDARD SPECIFICATIONS AND AS DIRECTED BY THE ENGINEER. THIS WORK WILL NOT BE PAID FOR SEPARATELY, BUT WILL BE INCLUDED IN THE COST OF EARTH EXCAVATION.

ANY REFERENCE TO A STANDARD IN THESE PLANS SHALL BE INTERPRETED TO MEAN THE EDITION AS INDICATED BY THE SUBNUMBER SHOWN IN THE LIST OF STANDARDS OR THE COPY INCLUDED IN THESE PLANS.

THE FOLLOWING RATES OF APPLICATION HAVE BEEN USED IN CALCULATING PLAN QUANTITIES:

GRANULAR MATERIALS	2.05	TONS / CU YD
HMA RESURFACING	112	LBS / SQ YD / IN
SHORT TERM PAVEMENT MARKING	10	FT /100 FT OF APPLICATION
MIX FOR CRACKS, JTS & FLGWYS	0.0003	TONS / SQ YD

ALL DAMAGE TO DEPARTMENT OWNED UNDERGROUND FACILITIES, CAUSED BY THE CONTRACTOR SHALL BE REPAIRED TO THE SATISFACTION OF THE DEPARTMENT AT THE CONTRACTOR'S EXPENSE. THIS SHALL INCLUDE ALL TEMPORARY REPAIRS REQUIRED TO KEEP THE FACILITY OPERATIONAL WHILE MATERIAL IS BEING OBTAINED TO MAKE PERMANENT REPAIRS. SPLICING OF ELECTRIC CABLE WILL NOT BE ALLOWED. ELECTRIC CABLE SHALL BE REPLACED FROM POLE TO POLE OR CONTROLLER.

THE CONTRACTOR SHALL CONTACT JULIE AT LEAST 48 HOURS PRIOR TO EXCAVATION TO DETERMINE WHICH UTILITIES ARE IN THE AREA.

PRIOR TO OPENING LANES TO TRAFFIC, THE CONTRACTOR SHALL PLACE AND COMPACT THE SUBBASE GRANULAR MATERIAL, TY B SHOWN IN THE PLANS IN ACCORDANCE WITH SECTION 311 OF THE STANDARD SPECIFICATIONS TO A DEPTH SUCH THAT ANY EXCAVATED DROP OFF BETWEEN THE PAVED SURFACE AND ADJACENT SURFACE WITHIN EIGHT FEET OF THE EDGE OF THE NEAREST TRAFFIC LANE IS LESS THAN TWELVE INCHES.

COMMITMENTS:

LOCATION(S):	ENTIRE PROJECT	ENTIRE PROJECT
MIXTURE USE(S):	SURFACE COURSE 2"	BASE COURSE 6"
BINDER GRADE (PG):	PG 64-22	PG 64-22
DESIGN AIR VOIDS:	4.0% @ N70	4.0% @ N70
MIXTURE COMPOSITION: (MIXTURE GRADATION)	1L-9.5	1L-19.0
FRICTION AGGREGATE:	MIXTURE D	-
MIXTURE WEIGHT:	112.0 LB/SY/IN	112.0 LB/SY/IN
QUALITY MANAGEMENT PROGRAM:	QC/QA	QC/QA
SUBLOT SIZE:	N/A	N/A
DENSITY TEST METHOD:	CORES	CORES

STATE OF ILLINOIS
DEPARTMENT OF TRANSPORTATION
DISTRICT THREE
AS BUILT INFORMATION

SUPERVISING CONSTRUCTION FIELD ENGINEER

RESIDENT ENGINEER / TECHNICIAN

START & END DATES
OF CONSTRUCTION:

INSPECTORS:

STATE OF ILLINOIS
DEPARTMENT OF TRANSPORTATION
DISTRICT THREE

PREPARED BY: Tom Benick
DISTRICT STUDIES & PLANS ENGINEER

DATE: 4-5-19

EXAMINED BY: Kyle Vats
DISTRICT CONSTRUCTION ENGINEER

Michael A. Short
DISTRICT MATERIALS ENGINEER

Tom Hays
DISTRICT OPERATIONS ENGINEER

FILE NAME =	USER NAME = budzynskim	DESIGNED -	REVISED -	STATE OF ILLINOIS DEPARTMENT OF TRANSPORTATION	GENERAL NOTES	F.A.P. RTE.	SECTION	COUNTY	TOTAL SHEETS	SHEET NO.	
pw\planroom.dot\illinois.gov\PIWDOT\Documents\IDOT	Files\District 3\Projects\ID366K23\CADData\CADsheets\ID366K23	DRAWN -	REVISED -			332	(7) SFY, N-2	*	21	2	
Default	PLOT SCALE = 100.0000' / in.	CHECKED -	REVISED -			CONTRACT NO. 66K23					
	PLOT DATE = 4/4/2019	DATE -	REVISED -			ILLINOIS FED. AID PROJECT					
SCALE:						SHEET	OF	SHEETS	STA.	TO STA.	

*KANKAKEE & WILL

CODE NO.	ITEM	UNIT	TOTAL QUANTITY	90% FED 10% STATE	
				CONSTR. CODE	CONSTR. CODE
				KANKAKEE CO.	WILL CO.
				ROADWAY	ROADWAY
				0021	0021
				RURAL	RURAL
20200100	EARTH EXCAVATION	CU YD	199	106	93
20400800	FURNISHED EXCAVATION	CU YD	10	10	0
25000210	SEEDING, CLASS 2A	ACRE	0.16	0.09	0.07
25000400	NITROGEN FERTILIZER NUTRIENT	POUND	16	9	7
25000500	PHOSPHORUS FERTILIZER NUTRIENT	POUND	16	9	7
25000600	POTASSIUM FERTILIZER NUTRIENT	POUND	16	9	7
25100630	EROSION CONTROL BLANKET	SQ YD	735	400	335
28000500	INLET AND PIPE PROTECTION	EACH	1	1	0
31101810	SUBBASE GRANULAR MATERIAL, TYPE B 12"	SQ YD	430	215	215
35501308	HOT-MIX ASPHALT BASE COURSE, 6"	SQ YD	405	201	204
40600290	BITUMINOUS MATERIALS (TACK COAT)	POUND	1486	745	741
40600400	MIXTURE FOR CRACKS, JOINTS, AND FLANGEWAYS	TON	0.6	0.4	0.2
40603340	HOT-MIX ASPHALT SURFACE COURSE, MIX "D", N70	TON	46	23	23
44004250	PAVED SHOULDER REMOVAL	SQ YD	49	44	5

FILE NAME =	USER NAME = budzynsklm	DESIGNED -	REVISED -
pw:\planroom.dot\illinois.gov\PWIDOT\Documents\IDOT	Office\District 3\Projects\D366K23\CADData\CADsheets\D366K23	DRAWN -	REVISED -
Default	PLOT SCALE = 100.0000' / in.	CHECKED -	REVISED -
	PLOT DATE = 4/4/2019	DATE -	REVISED -

**STATE OF ILLINOIS
DEPARTMENT OF TRANSPORTATION**

SUMMARY OF QUANTITIES			
SCALE:	SHEET	OF	SHEETS
	STA.		TO STA.

*KANKAKEE & WILL			
F.A.P. RTE.	SECTION	COUNTY	TOTAL SHEETS
332	(7) SFY, N-2	*	21
			SHEET NO. 3
CONTRACT NO. 66K23			
ILLINOIS		FED. AID PROJECT	

90%
10% S

CODE NO.	ITEM	UNIT	TOTAL QUANTITY	CONSTR. CODE	CONSTR. CODE
				KANKAKEE CO. ROADWAY	WILL CO. ROADWAY
				0021 RURAL	0021 RURAL
44213200	SAW CUTS	FOOT	183	161	22
48101500	AGGREGATE SHOULDERS, TYPE B 6"	SQ YD	124	106	18
48102100	AGGREGATE WEDGE SHOULDER, TYPE B	TON	4	1.8	2.2
50104400	CONCRETE HEADWALL REMOVAL	EACH	1	1	0
542A0223	PIPE CULVERTS, CLASS A, TYPE 1 18"	FOOT	12	12	0
54213663	PRECAST REINFORCED CONCRETE FLARED END SECTIONS 18"	EACH	1	1	0
54248510	CONCRETE COLLAR	CU YD	0.42	0.42	0
64200108	SHOULDER RUMBLE STRIPS, 8 INCH	FOOT	7794	3956	3838
67100100	MOBILIZATION	L SUM	1	0.5	0.5
70100450	TRAFFIC CONTROL AND PROTECTION, STANDARD 701201	L SUM	1	0.5	0.5
70100460	TRAFFIC CONTROL AND PROTECTION, STANDARD 701306	L SUM	1	0.5	0.5
70100500	TRAFFIC CONTROL AND PROTECTION, STANDARD 701326	L SUM	1	0.5	0.5
70103815	TRAFFIC CONTROL SURVEILLANCE	CAL DA	20	12	8
70300100	SHORT TERM PAVEMENT MARKING	FOOT	503	311	192

FILE NAME =	USER NAME = budzynskim	DESIGNED -	REVISED -
pw:\planroom.dot\illinois.gov-PWIDOT\Documents\DOT	offices\District 3\Projects\D366K23\CADData\CADsheets\D366K23	DRAWN -	REVISED -
Default	PLOT SCALE = 100.0000' / in.	CHECKED -	REVISED -
	PLOT DATE = 4/4/2019	DATE -	REVISED -

**STATE OF ILLINOIS
DEPARTMENT OF TRANSPORTATION**

SUMMARY OF QUANTITIES

SCALE: SHEET OF SHEETS STA. TO STA.

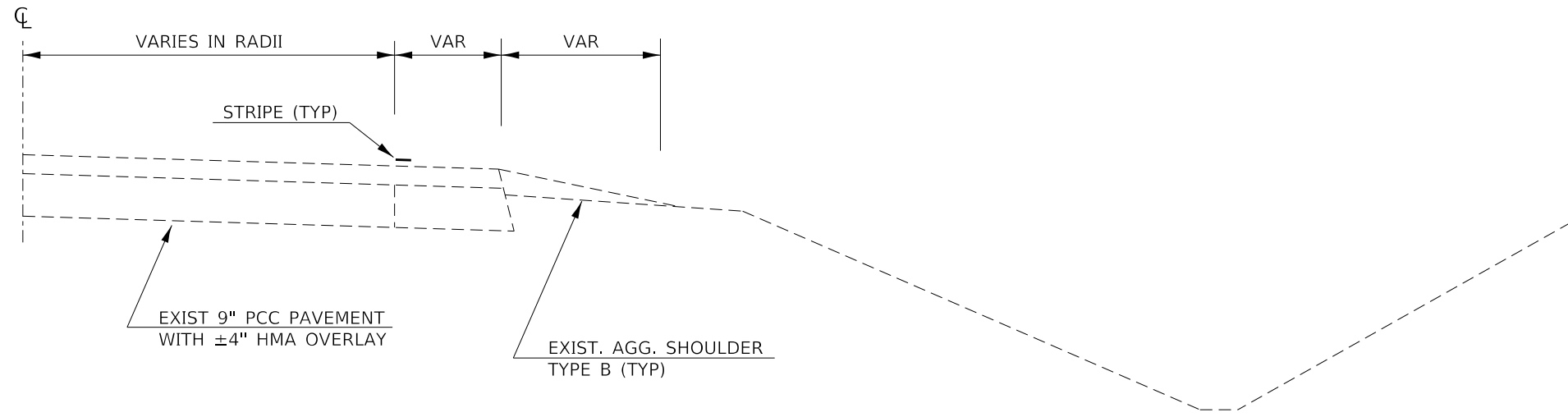
*KANKAKEE & WILL	
F.A.P. RTE.	SECTION
332	(7) SFY, N-2
COUNTY	TOTAL SHEETS
*	21
CONTRACT NO. 66K23	
ILLINOIS	FED. AID PROJECT

CODE NO.	ITEM	UNIT	TOTAL QUANTITY	90% FED 10% STATE	
				CONSTR. CODE	CONSTR. CODE
				KANKAKEE CO. ROADWAY 0021 RURAL	WILL CO. ROADWAY 0021 RURAL
70300150	SHORT TERM PAVEMENT MARKING REMOVAL	SQ FT	169	104	65
* 78000200	THERMOPLASTIC PAVEMENT MARKING - LINE 4"	FOOT	600	370	230
78000500	THERMOPLASTIC PAVEMENT MARKING - LINE 8"	FOOT	80	80	
* 78000600	THERMOPLASTIC PAVEMENT MARKING - LINE 12"	FOOT	285	285	0
* 78000650	THERMOPLASTIC PAVEMENT MARKING - LINE 24"	FOOT	18	18	0
* 78008210	POLYUREA PAVEMENT MARKING TYPE I - LINE 4"	FOOT	350	0	350
* 78008230	POLYUREA PAVEMENT MARKING TYPE I - LINE 6"	FOOT	2034	1074	960
* 78100100	RAISED REFLECTIVE PAVEMENT MARKER	EACH	51	26	25
78300200	RAISED REFLECTIVE PAVEMENT MARKER REMOVAL	EACH	51	26	25
X0326898	CENTER LINE - RUMBLE STRIP - 16"	FOOT	3847	1928	1919
X4405020	LONGITUDINAL PARTIAL DEPTH REMOVAL 2"	FOOT	3947	2028	1919
X4420900	LONGITUDINAL PARTIAL DEPTH PATCHING	TON	100	52	48
Z0076600	TRAINEES	HOUR	1000	1000	
X5420618	PIPE CULVERTS TO BE CLEANED 18"	FOOT	120	62	58
Z0076604	TRAINEES TRAINING PROGRAM GRADUATE	HOUR	1000	1000	
Z0030850	TEMPORARY INFORMATION SIGNING	SQ FT	84	42	42

*= SPECIALTY ITEM

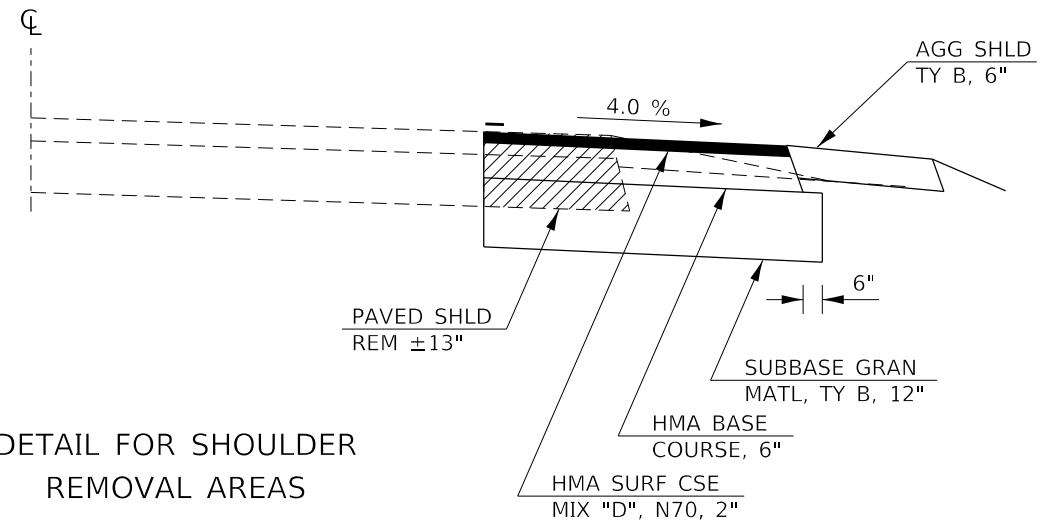
FILE NAME =	USER NAME = budzynsklm	DESIGNED -	REVISED -	STATE OF ILLINOIS DEPARTMENT OF TRANSPORTATION	SUMMARY OF QUANTITIES			F.A.P. RTE.	SECTION	COUNTY	TOTAL SHEETS	SHEET NO.
p:\planroom.dot\illinois.gov\PWIDOT\Documents\IDOT	Office\District 3\Projects\D366K23\CADData\CADsheets\D366K23	DRAWN -	REVISED -					332	(7) SFY, N-2	*	21	5
Default	PLOT SCALE = 100.0000' / in.	CHECKED -	REVISED -		SCALE: SHEET OF SHEETS STA. TO STA.			CONTRACT NO. 66K23				
	PLOT DATE = 4/5/2019	DATE -	REVISED -		ILLINOIS FED. AID PROJECT							

*KANKAKEE & WILL

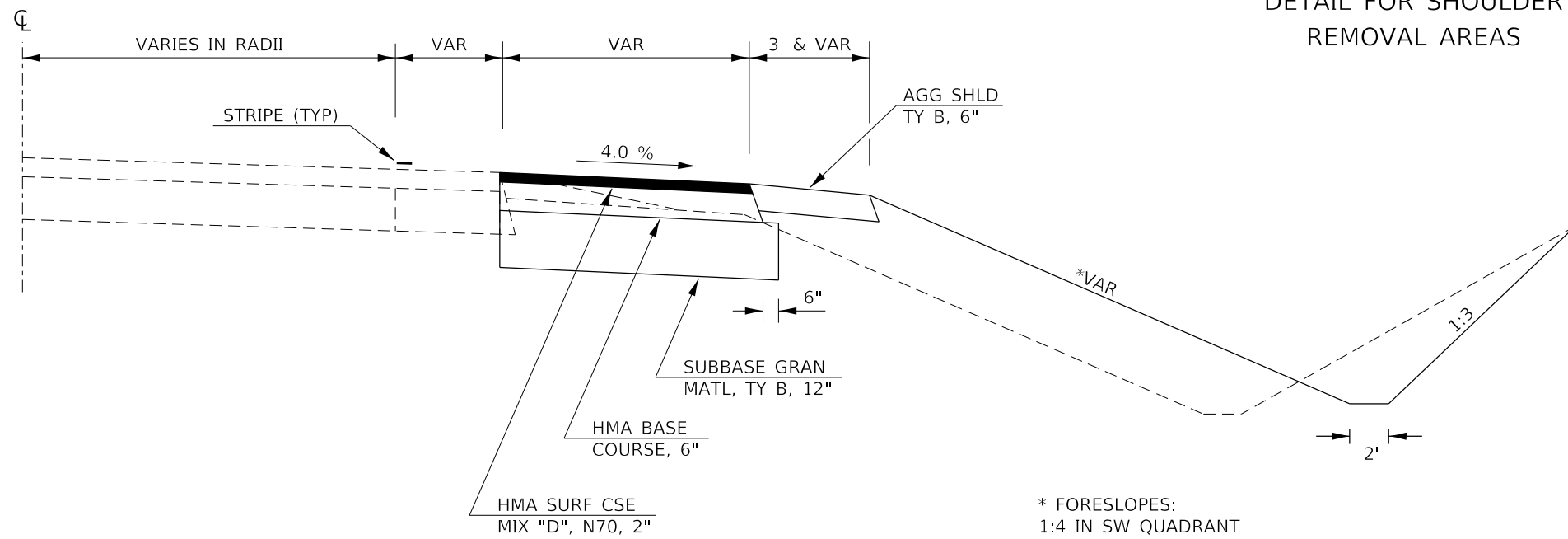


EXISTING TYPICAL SECTION

INTERSECTION RADII - HALF SECTION



DETAIL FOR SHOULDER REMOVAL AREAS



PROPOSED TYPICAL SECTION

INTERSECTION RADII - HALF SECTION

* FORESLOPES:
1:4 IN SW QUADRANT
1:3 IN NW QUADRANT

FILE NAME =	USER NAME = budzynsklm	DESIGNED -	REVISED -
p:\planroom.dot\illinois.gov\PWIDOT\Documents\IDOT	Office\District 3\Projects\D366K23\CADData\CADsheets\D366K23	DRAWN -	REVISED -
Default	PLOT SCALE = 100.0000' / in.	CHECKED -	REVISED -
	PLOT DATE = 4/4/2019	DATE -	REVISED -

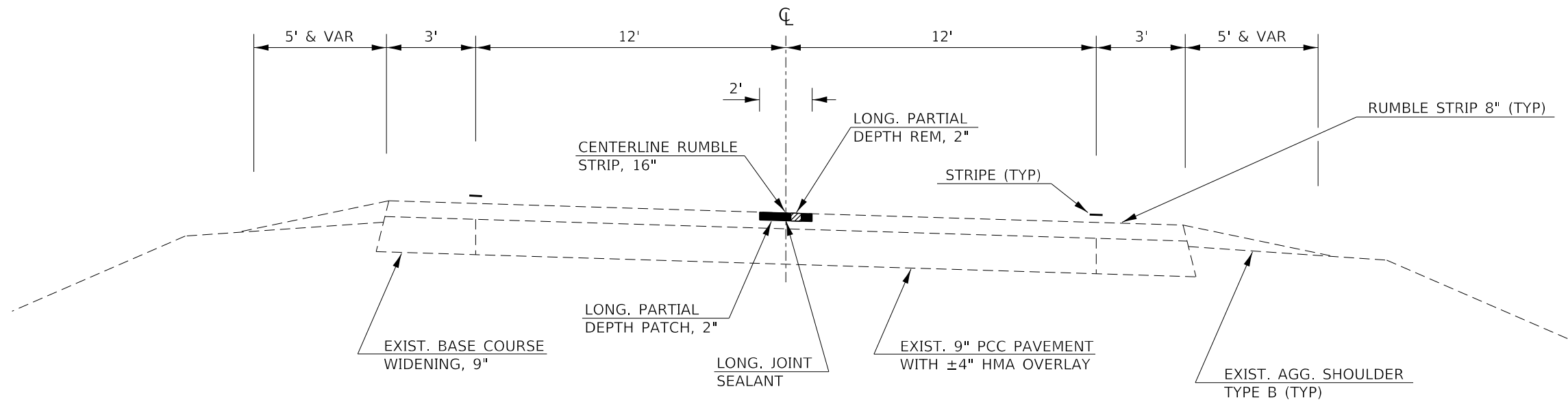
**STATE OF ILLINOIS
DEPARTMENT OF TRANSPORTATION**

TYPICAL SECTIONS

SCALE: SHEET OF SHEETS STA. TO STA.

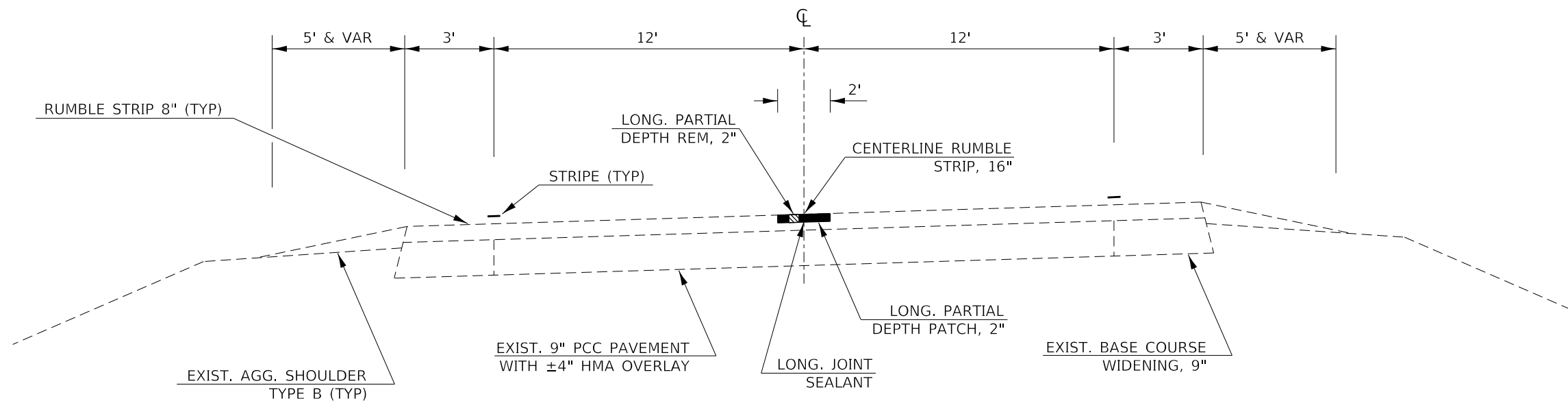
F.A.P. RTE.		SECTION	COUNTY	TOTAL SHEETS	SHEET NO.
332		(7) SFY, N-2	*	21	6
CONTRACT NO. 66K23					
ILLINOIS FED. AID PROJECT					

*KANKAKEE & WILL



PROPOSED TYPICAL SECTION

STA 26+05 TO STA 45+24



PROPOSED TYPICAL SECTION

STA 49+17 TO STA 69+45

FILE NAME =	USER NAME = budzynsklm	DESIGNED -	REVISED -	STATE OF ILLINOIS DEPARTMENT OF TRANSPORTATION	TYPICAL SECTIONS			F.A.P. RTE.	SECTION	COUNTY	TOTAL SHEETS	SHEET NO.
pw:\planroom.dot\illinois.gov\PWIDOT\Documents\IDOT	Office\District 3\Projects\D366K23\CADData\CADsheets\D366K23	DRAWN -	REVISED -					332	(7) SFY, N-2	*	21	7
Default	PLOT SCALE = 100.0000' / in.	CHECKED -	REVISED -		CONTRACT NO. 66K23							
	PLOT DATE = 4/4/2019	DATE -	REVISED -		SCALE:	SHEET	OF	SHEETS	STA.	TO	STA.	ILLINOIS

*KANKAKEE & WILL

PAVEMENT WIDENING SCHEDULE								
LOCATION	HMA SURFACE COURSE, MIX "D" N70, 2"	HMA BASE COURSE, 6"	SUBBASE GRAN MATL TY B, 12"	AGG SHOULDERS TY B, 6"	AGG WEDGE SHOULDER TY B	BIT MATLS (TACK COAT)	PAVED SHOULDER REMOVAL	SAW CUTS
	TON	SQ YD	SQ YD	SQ YD	TON	POUND	SQ YD	FOOT
NORTHWEST QUAD	23	204	215	18	2.2	549	5	22
SOUTHWEST QUAD	17	148	158	75	0.6	398	22	101
SOUTHEAST QUAD	6	53	57	31	1.2	143	22	60
TOTAL	46	405	430	124	4	1090	49	183

CENTERLINE AND SHOULDER RUMBLE STRIP SCHEDULE										
LOCATION			LENGTH	AREA (2' WIDE)	LONG PARTIAL DEPTH REM 2"	LONG PARTIAL DEPTH PATCH 2"	BIT MATLS (TACK COAT)	MIX FOR CR JTS FLGWYS	CENTERLINE RUMBLE STRIPS, 16"	SHOULDER RUMBLE STRIPS, 8"
STA	TO	STA	FOOT	SQ YD	FOOT	TON	POUND	TON	FOOT	FOOT
26+05	TO	45+24	1919	426	1919	48	192	0.2	1919	3838
STATION EQUATION										
STA 49+15.5 BK = 49+16.57 AH										
49+17	TO	66+00	1683	374	1683	42	169	0.2	1683	3366
66+00	TO	67+00	100	22	100	3	10	0.1		100
67+00	TO	69+45	245	54	245	7	25	0.1	245	490
TOTAL			3947	877	3947	100	396	0.6	3847	7794

PAVEMENT MARKING SCHEDULE												
LOCATION			*POLYUREA PAVEMENT MARKINGS, TYPE I		THERMOPLASTIC PAVEMENT MARKINGS				SHORT TERM PAVT MKING	SHORT TERM PAVT MKING REMOVAL	RAISED REF PAVT MKR (AMBER)	RAISED REF PAVT MKR REMOVAL
			4" YELLOW	6" YELLOW	4" WHITE	8" YELLOW	12" YELLOW	12" WHITE				
STA	TO	STA	FOOT	FOOT	FOOT	FOOT	FOOT	FOOT	FOOT	SQ FT	EACH	EACH
CENTERLINE MARKINGS												
26+05	TO	27+80	350	88					18	6	3	3
27+80	TO	45+24		872					174	59	22	22
STATION EQUATION												
STA 49+15.5 BK = 49+16.57 AH												
49+17	TO	69+45		1014					203	68	26	26
INTERSECTION MARKINGS												
NORTHWEST QUAD					230							
SOUTHWEST QUAD					287	80	35	250				
SOUTHEAST QUAD					83							
WEST LEG					60				18	108	36	
TOTAL			350	2034	600	80	285	18	503	169	51	51

*QUANTITY REPRESENTS TWO SEPARATE APPLICATIONS

*KANKAKEE & WILL

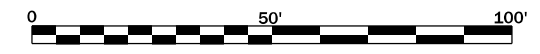
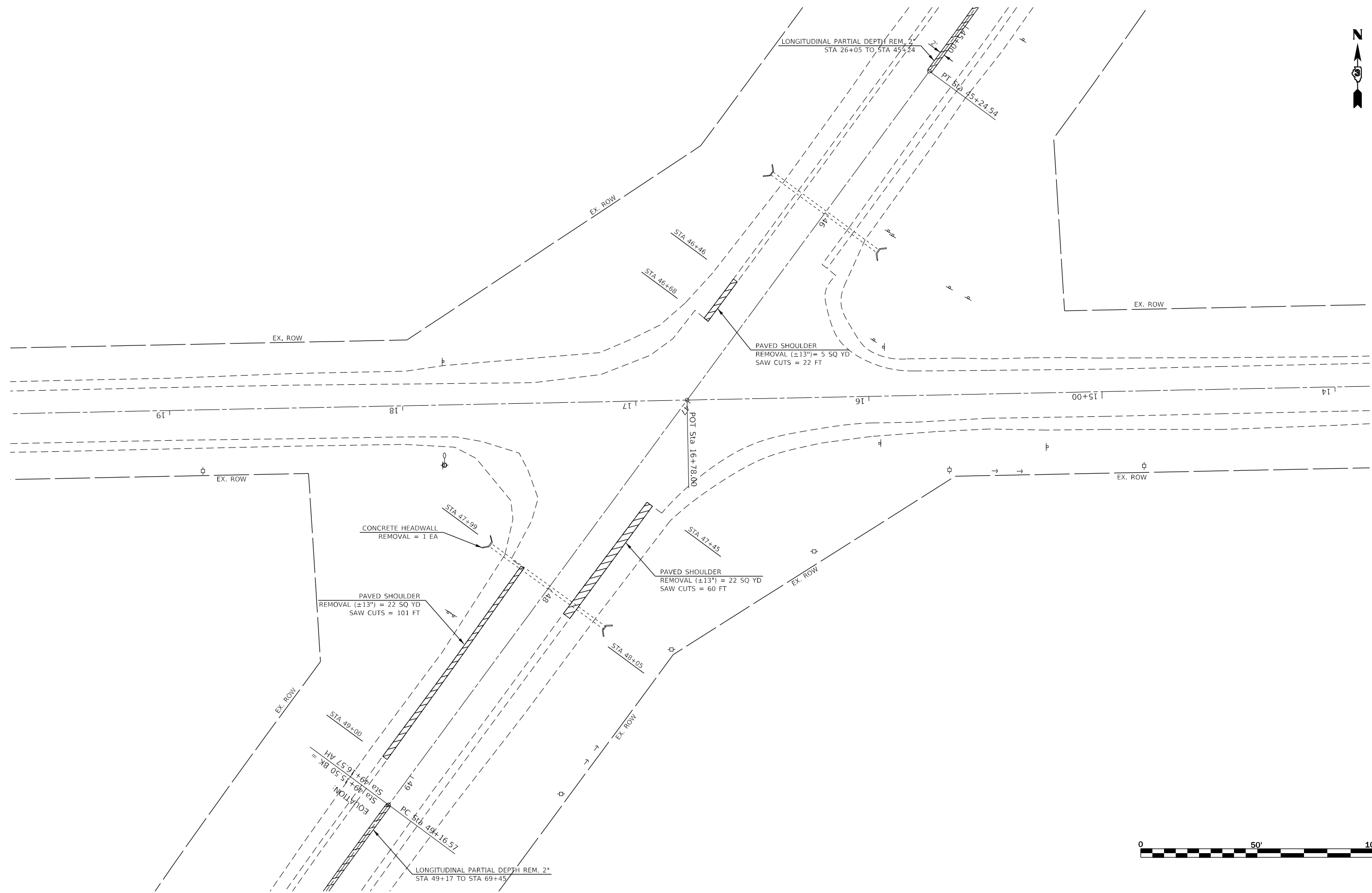
CULVERT EXTENSION SCHEDULE					
STA / SIDE	PIPE CULVERT CL A, TY 1 18"	PRECAST CONC FLARED END SECTION, 18"	CONCRETE COLLAR	CONCRETE HEADWALL REMOVAL	PIPE CULVERTS TO BE CLEANED
	FOOT	EACH	CU YD	EACH	FOOT
46+00					58
48+00 RT	12	1	0.42	1	62
TOTAL	12	1	0.42	1	120

EARTHWORK SCHEDULE				
LOCATION	EARTH EXCAVATION	*EARTH EX ADJUSTED FOR SHRINKAGE	EMBANKMENT	EARTHWORK BALANCE WASTE (+) OR SHORTAGE (-)
	CU YD	CU YD	CU YD	CU YD
NORTHWEST QUAD	93	70	66	4
SOUTHWEST QUAD	81	61	94	-33
SOUTHEAST QUAD	25	19	0	19
TOTAL	199	150	160	-10

*ESTIMATED SHRINKAGE FACTOR IS 25%

LANDSCAPING SCHEDULE						
LOCATION	SEEDING CLASS 2A	NITROGEN FERTILIZER NUTRIENT	PHOSPHORUS FERTILIZER NUTRIENT	POTASSIUM FERTILIZER NUTRIENT	EROSION CONTROL BLANKET	INLET AND PIPE PROTECTION
	ACRE	POUND	POUND	POUND	SQ YD	EACH
NORTHWEST QUAD	0.07	6.3	6.3	6.3	335	
SOUTHWEST QUAD	0.09	8.1	8	8	400	1
TOTAL	0.16	14	14	14	735	1

SURVEY MONUMENT TABLE					
GPS NUMBER	DESCRIPTION	EXISTING MONUMENT TYPE	PROPOSED MONUMENT TYPE	MONUMENT RECORD TO BE RECORDED	RESPONSIBILITY
N/A	NO CENTERLINE CONTROL OR SECTION CORNER PERMANENT SURVEY MARKERS TO BE SET	N/A	N/A	N/A	N/A
NO KNOWN PERMANENT SURVEY MARKERS OR LAND SURVEY MONUMENTS EXIST AT THE ILL RTE. 1 / WILL COUNTY LINE ROAD INTERSECTION. UNKNOWN MONUMENTS MAY EXIST, AND IF FOUND THE R.E. MUST TIE THEM AND REQUEST PLATS AND PLANS PERSONNEL TO ANALYZE AND GPS ANY MONUMENT SUBJECT TO DAMAGE OR DESTRUCTION FROM THE PROPOSED WORK, AND INFORM THEM TO RESET THOSE MONUMENTS UPON JOB COMPLETION. THE R.E. IS TO INFORM THE PLATS AND PLANS SECTION TO SEARCH FOR ADDITIONAL MONUMENTS IF THE JOB LIMITS ARE EXPANDED DURING CONSTRUCTION. NO MONUMENT RECORDS WILL BE REQUIRED FOR THIS JOB.					

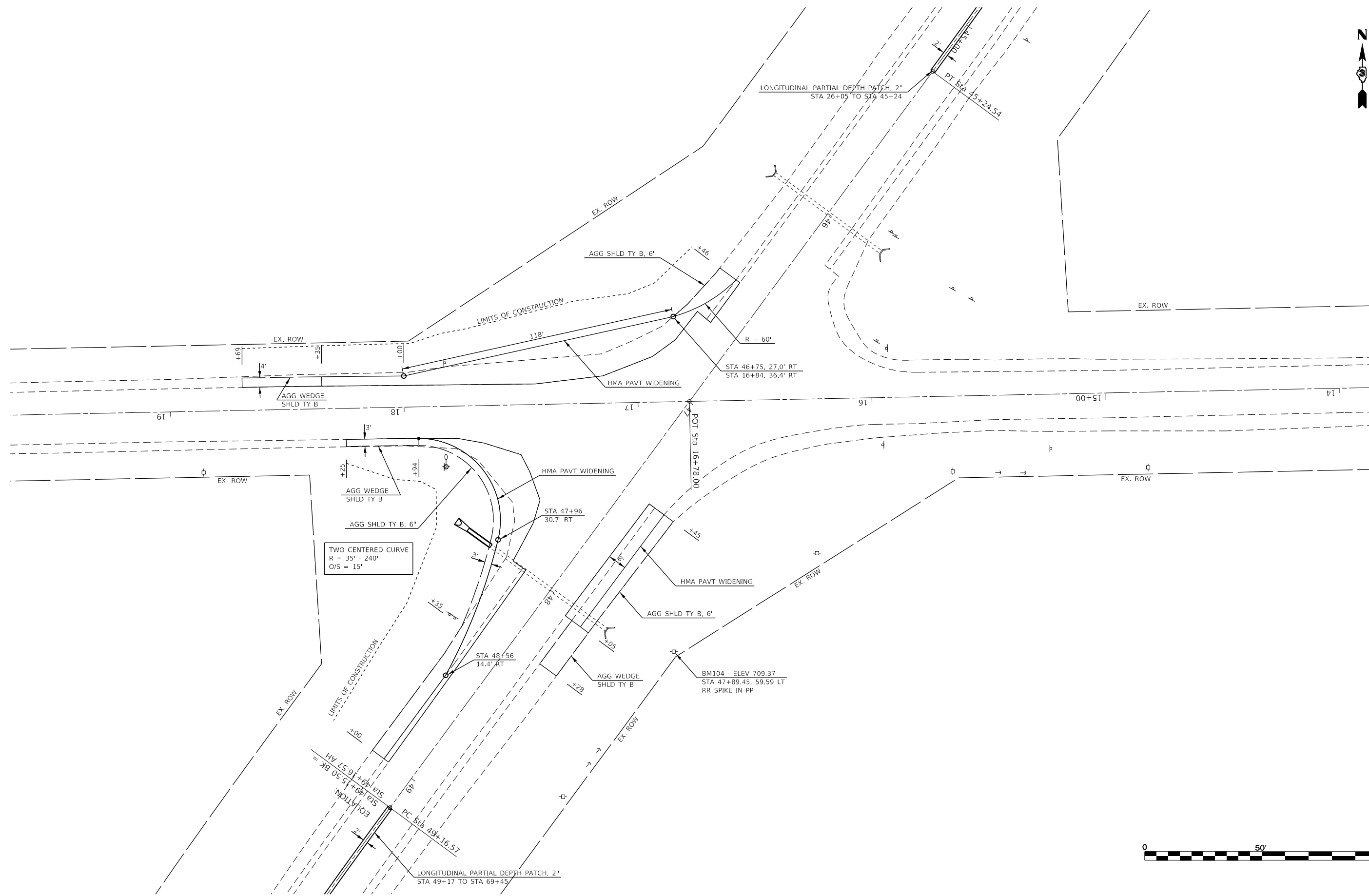


FILE NAME =	USER NAME = budzynsklm	DESIGNED -	REVISED -
p:\planroom\dot\illinois.gov\PWIDOT\Documents\IDOT	Office\District 3\Projects\D366K23\CADData\CADsheets\D366K23	DRAWN -	REVISED -
Default	PLOT SCALE = 40,0000' / in.	CHECKED -	REVISED -
	PLOT DATE = 4/4/2019	DATE -	REVISED -

**STATE OF ILLINOIS
DEPARTMENT OF TRANSPORTATION**

REMOVAL PLAN			
SCALE:	SHEET	OF SHEETS	STA. TO STA.

*KANKAKEE & WILL				
F.A.P. RTE.	SECTION	COUNTY	TOTAL SHEETS	SHEET NO.
332	(7) SFY, N-2	*	21	10
CONTRACT NO. 66K23				
ILLINOIS FED. AID PROJECT				



TWO CENTERED CURVE
 R = 35' - 240'
 O/S = 15'

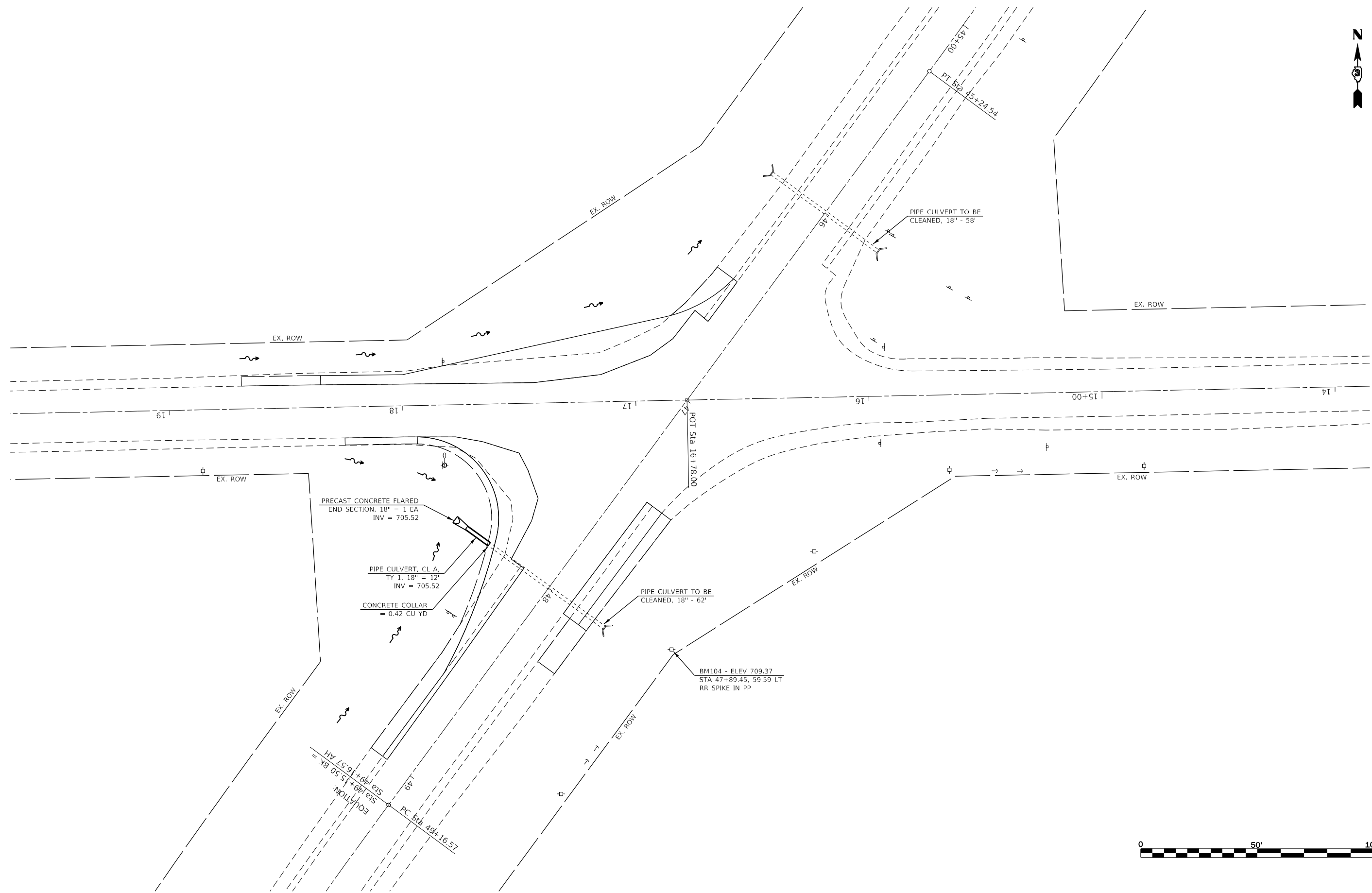


FILE NAME =	USER NAME = budzynsklm	DESIGNED -	REVISED -
pw:\planroom.dot\illinois.gov\PWIDOT\Documents\IDOT	Office\District 3\Projects\D366K23\CADData\CADsheets\D366K23	DRAWN -	REVISED -
Default	PLOT SCALE = 40,0000' / in.	CHECKED -	REVISED -
	PLOT DATE = 4/4/2019	DATE -	REVISED -

**STATE OF ILLINOIS
 DEPARTMENT OF TRANSPORTATION**

PROPOSED PLAN				
SCALE:	SHEET	OF	SHEETS	STA. TO STA.

*KANKAKEE & WILL				
F.A.P. RTE.	SECTION	COUNTY	TOTAL SHEETS	SHEET NO.
332	(7) SFY, N-2	*	21	11
CONTRACT NO. 66K23				
ILLINOIS FED. AID PROJECT				



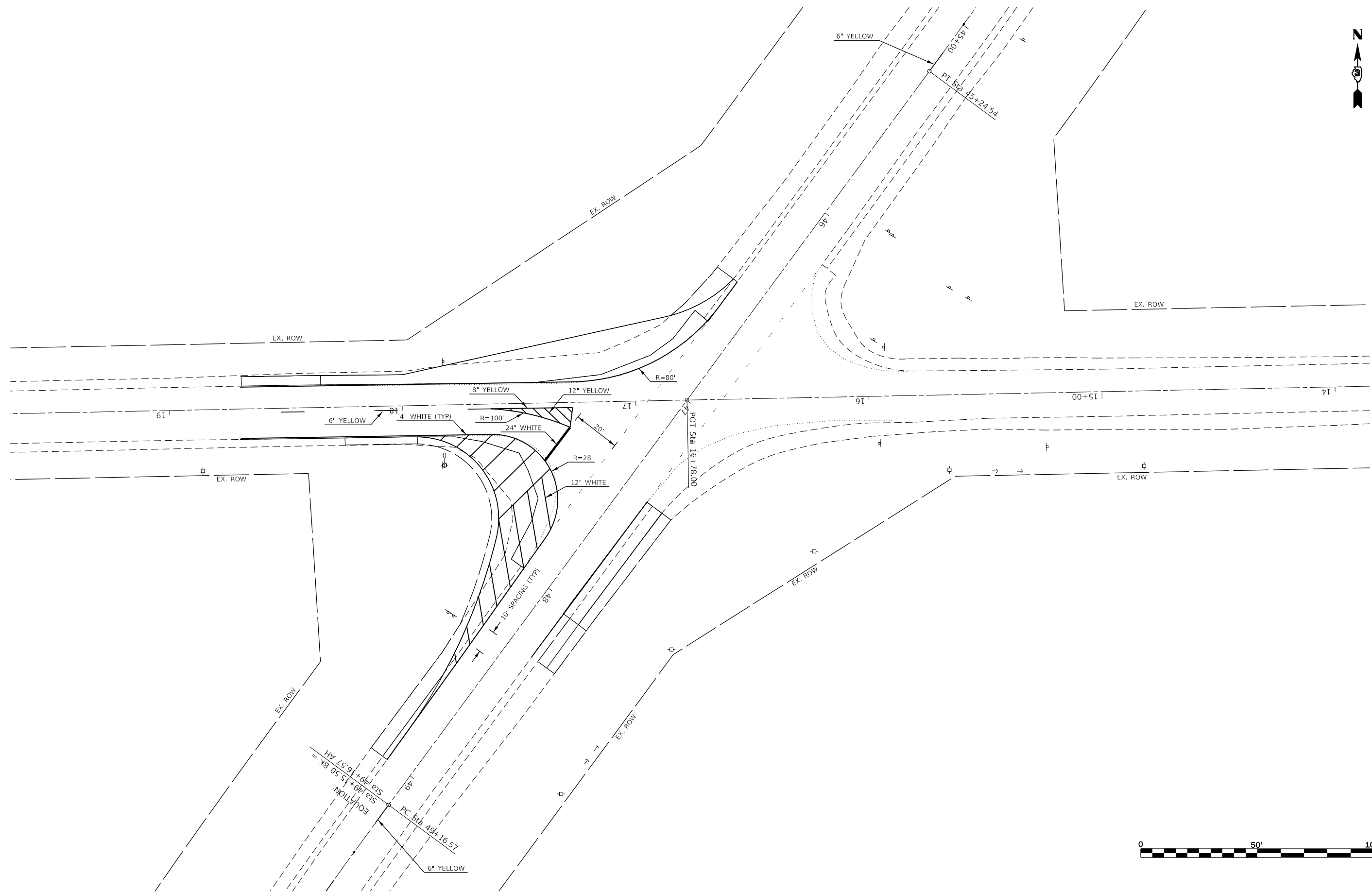
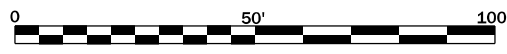
FILE NAME =	USER NAME = budzynsklm	DESIGNED -	REVISED -
p:\planroom\dot\illinois.gov\PWIDOT\Documents\IDOT	Office\District 3\Projects\D366K23\CADData\CADsheets\D366K23	DRAWN -	REVISED -
Default	PLOT SCALE = 40,0000' / in.	CHECKED -	REVISED -
	PLOT DATE = 4/4/2019	DATE -	REVISED -

**STATE OF ILLINOIS
DEPARTMENT OF TRANSPORTATION**

DRAINAGE PLAN				
SCALE:	SHEET	OF	SHEETS	STA. TO STA.

F.A.P. RTE.	SECTION	COUNTY	TOTAL SHEETS	SHEET NO.
332	(7) SFY, N-2	*	21	12
CONTRACT NO. 66K23				
		ILLINOIS	FED. AID PROJECT	

*KANKAKEE & WILL



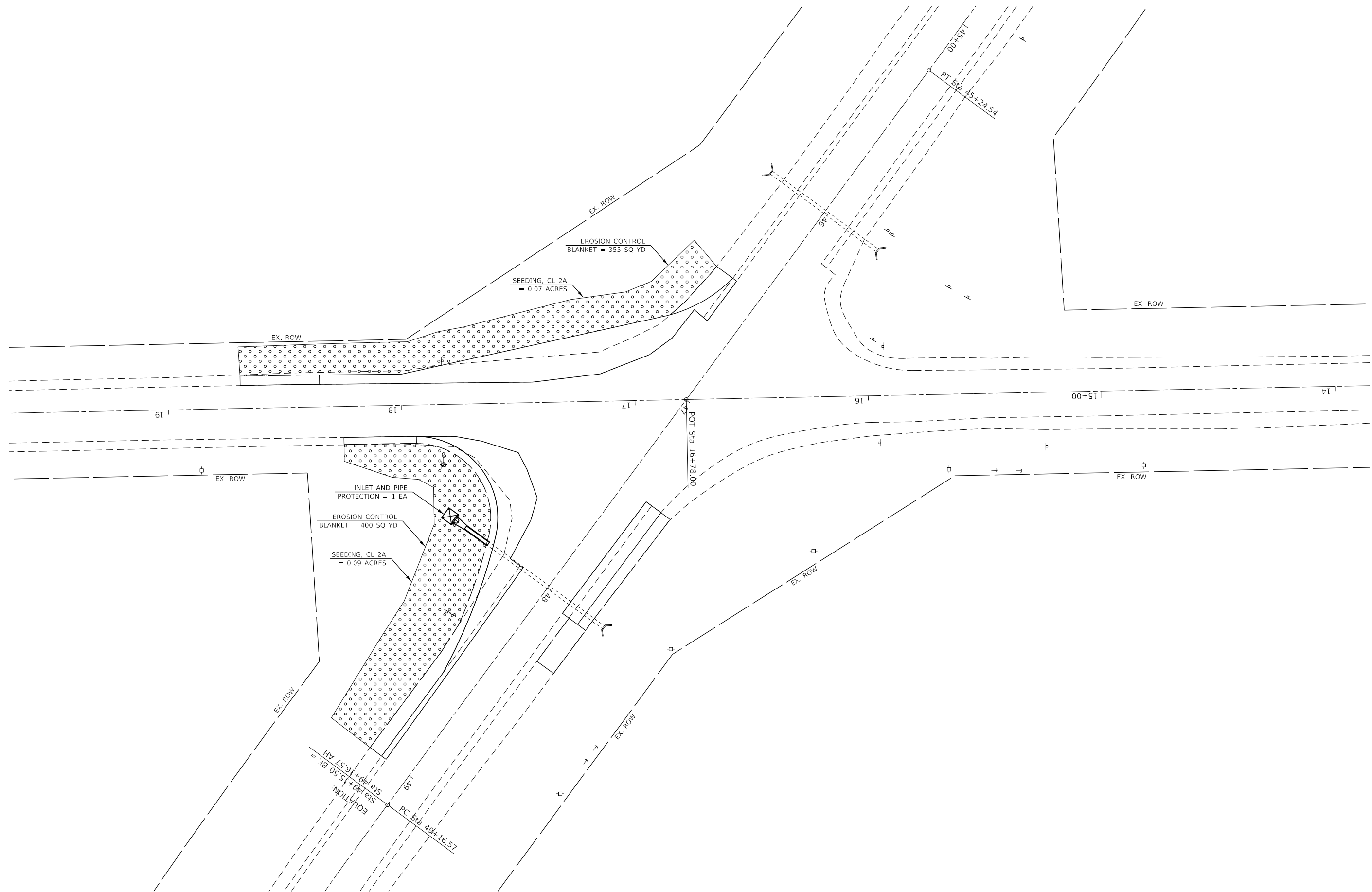
FILE NAME =	USER NAME = budzynsklm	DESIGNED -	REVISED -
pw:\planroom.dot\illinois.gov\PWIDOT\Documents\IDOT	Office\District 3\Projects\D366K23\CADData\CADsheets\D366K23	DRAWN -	REVISED -
Default	PLOT SCALE = 40,0000' / in.	CHECKED -	REVISED -
	PLOT DATE = 5/10/2019	DATE -	REVISED -

**STATE OF ILLINOIS
DEPARTMENT OF TRANSPORTATION**

PAVEMENT MARKING PLAN			
SCALE:	SHEET	OF SHEETS	STA. TO STA.

F.A.P. RTE.	SECTION	COUNTY	TOTAL SHEETS	SHEET NO.
332	(7) SFY, N-2	*	21	13
CONTRACT NO. 66K23				
ILLINOIS FED. AID PROJECT				

*KANKAKEE & WILL

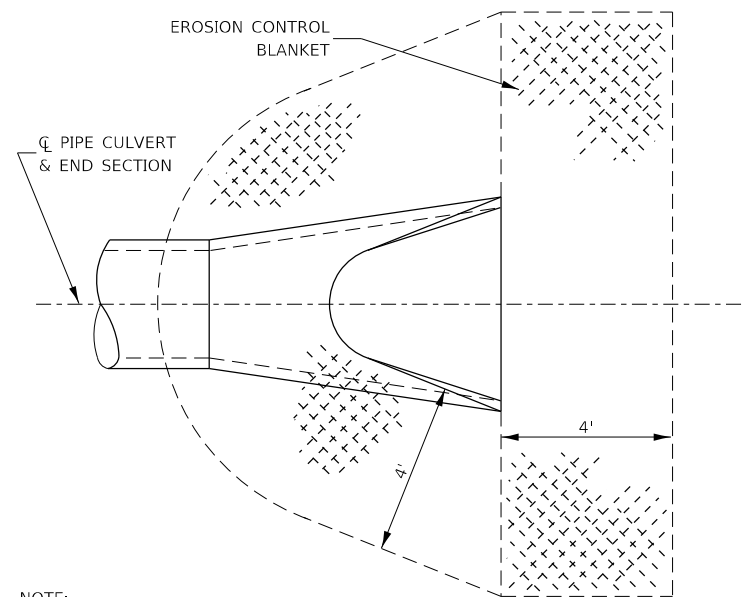


FILE NAME =	USER NAME = budzynsklm	DESIGNED -	REVISED -
p:\planroom\dot\illinois.gov\PWIDOT\Documents\IDOT	Office\District 3\Projects\D366K23\CADData\CADsheets\D366K23	DRAWN -	REVISED -
Default	PLOT SCALE = 40,0000' / in.	CHECKED -	REVISED -
	PLOT DATE = 4/4/2019	DATE -	REVISED -

**STATE OF ILLINOIS
DEPARTMENT OF TRANSPORTATION**

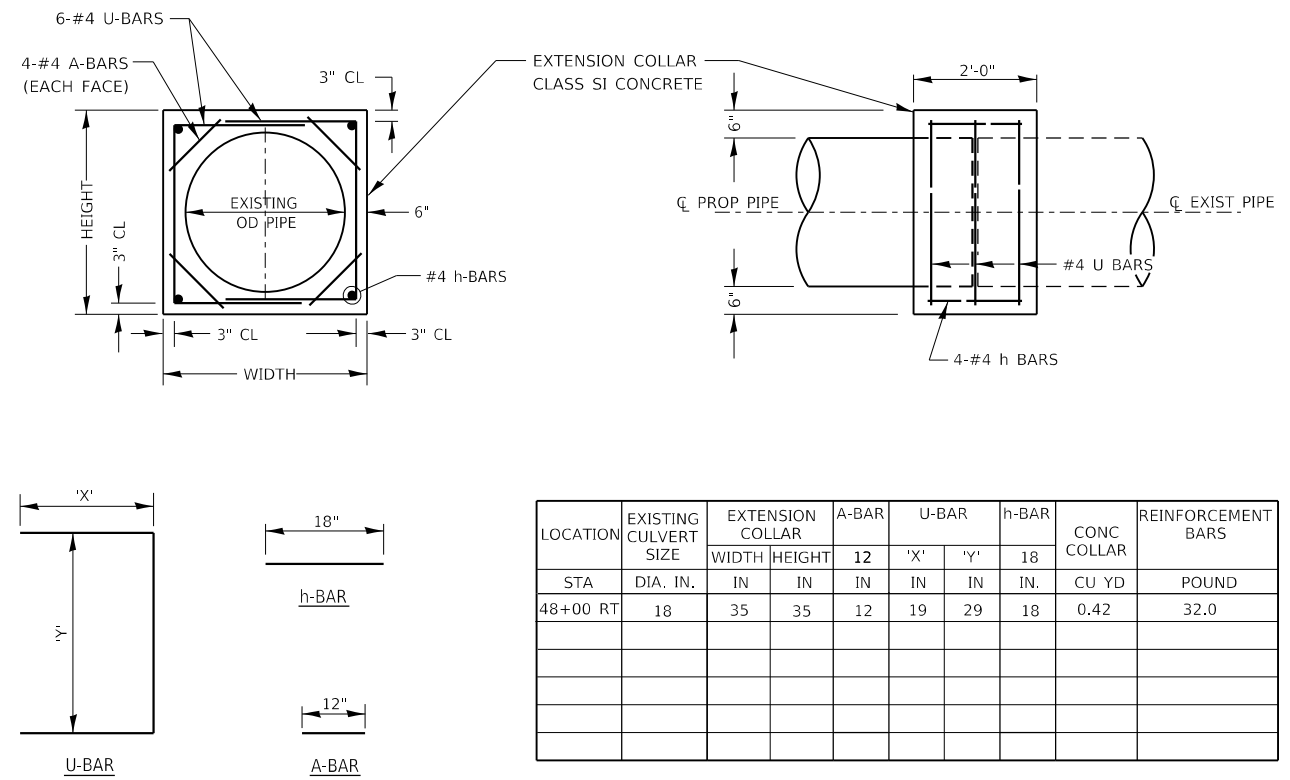
LANDSCAPING PLAN			
SCALE:	SHEET	OF	SHEETS
	STA.	TO	STA.

*KANKAKEE & WILL			
F.A.P. RTE.	SECTION	COUNTY	TOTAL SHEETS
332	(7) SFY, N-2	*	21
			SHEET NO. 14
CONTRACT NO. 66K23			
ILLINOIS FED. AID PROJECT			



NOTE:
TO BE USED AT ALL END SECTIONS

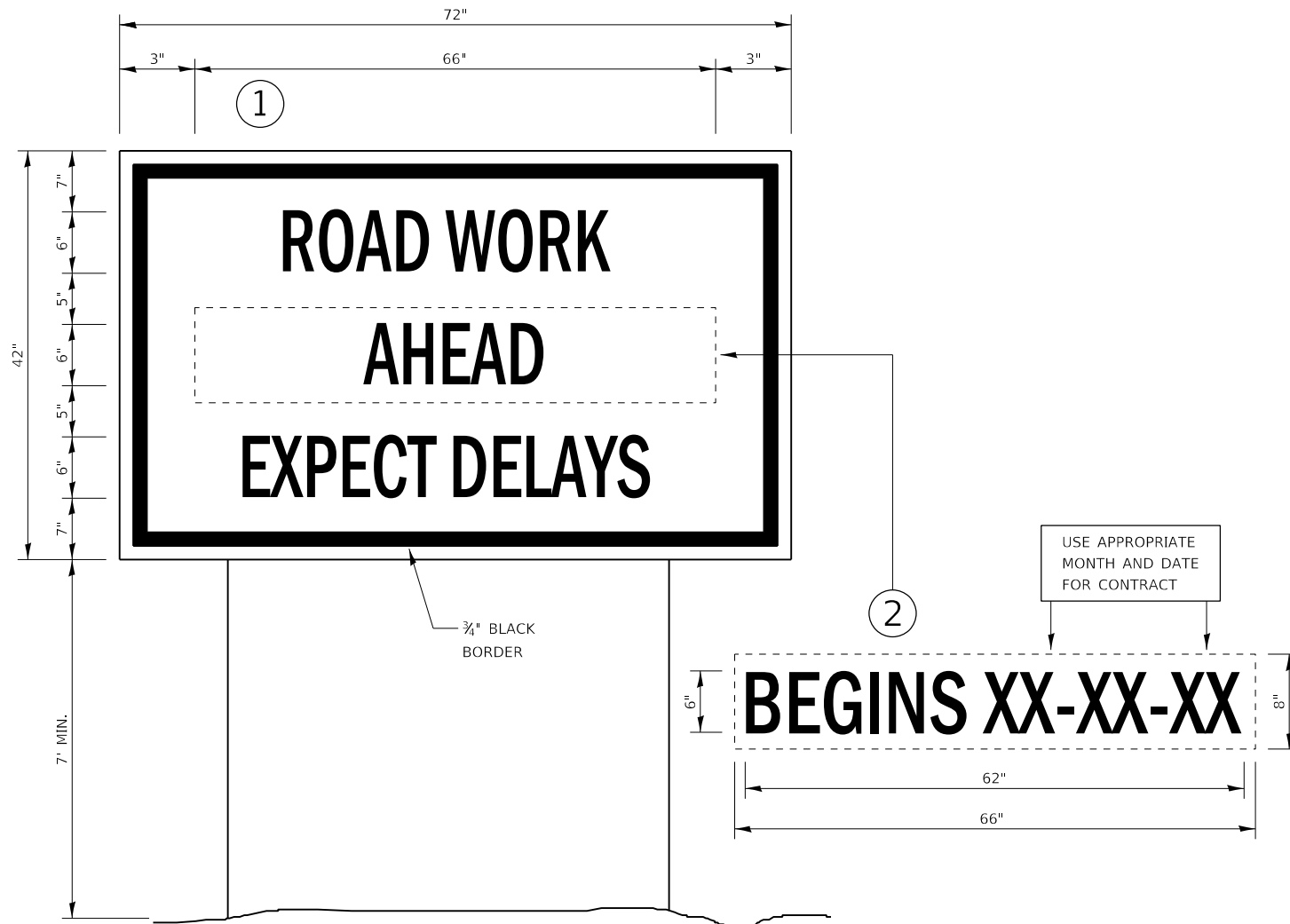
**DETAIL OF EROSION CONTROL BLANKET
LINING AROUND END SECTION**



LOCATION	EXISTING CULVERT SIZE	EXTENSION COLLAR		A-BAR	U-BAR		h-BAR	CONC COLLAR	REINFORCEMENT BARS
		WIDTH	HEIGHT	12	'X'	'Y'	18		
STA	DIA. IN.	IN	IN	IN	IN	IN	IN.	CU YD	POUND
48+00 RT	18	35	35	12	19	29	18	0.42	32.0

NOTE: A-BARS, U-BARS, AND h-BARS ARE INCLUDED IN THE COST OF THE CONCRETE COLLAR

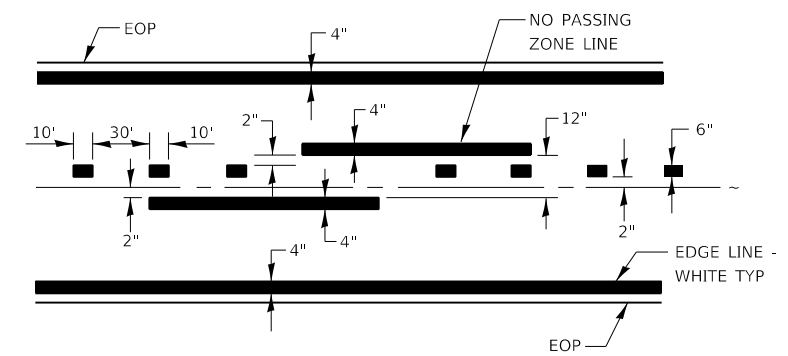
COLLAR DETAIL (DIRECT PIPE CULVERT EXTENSION)



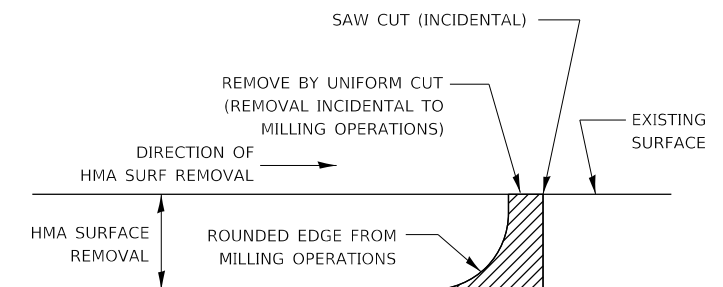
TEMPORARY INFORMATION SIGNING

NOTES:

1. USE 6" D BLACK LETTERING ON FLUORESCENT ORANGE BACKGROUND.
2. ERECT SIGNS AT LOCATIONS IN ADVANCE OF THE "ROAD CONSTRUCTION AHEAD" SIGNS AS DIRECTED BY THE ENGINEER.
3. ERECT SIGN ① WITH INSTALLED PANEL ② A MINIMUM OF ONE WEEK PRIOR TO THE START OF THE LANE CLOSURE.
4. REMOVE PANEL ② ON THAT DATE.
5. SEE SPECIAL PROVISION "TEMPORARY INFORMATION SIGNING" FOR ADDITIONAL INFORMATION.
6. WILL BE PAID FOR PER SQ FT AS "TEMPORARY INFORMATION SIGNING". EACH SIGN = 21 SQ FT AND THE DATE PANEL ② WILL NOT BE MEASURED SEPARATELY FOR PAYMENT.



PAVEMENT MARKING



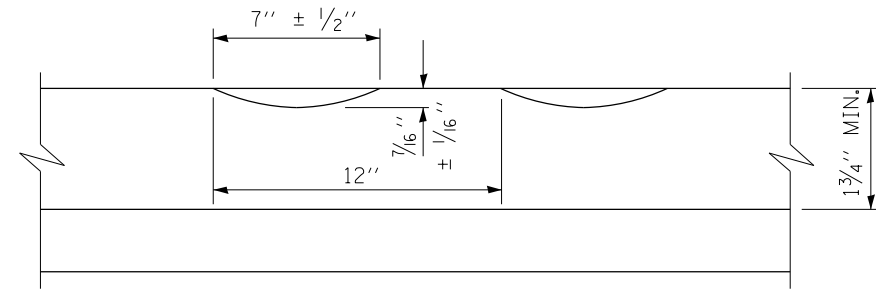
NOTE:

WHEN MILLING OPERATIONS PRODUCE A ROUNDED EDGE, THEN A SAW CUT SHALL BE USED TO MANUFACTURE A PERPENDICULAR EDGE AS SHOWN IN THE DETAIL. THE ENGINEER SHALL BE THE SOLE JUDGE CONCERNING THE USE OF THIS DETAIL.

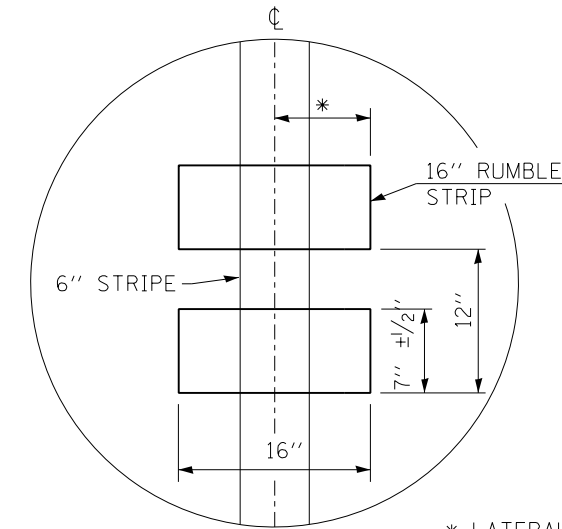
HMA DETAIL AT BUTT JOINTS

FILE NAME =	USER NAME = budzynsklm	DESIGNED -	REVISED -	STATE OF ILLINOIS DEPARTMENT OF TRANSPORTATION	DETAILS	F.A.P. RTE. =	SECTION =	COUNTY =	TOTAL SHEETS =	SHEET NO. =	
pw:\planroom.dot\illinois.gov\PWIDOT\Documents\IDOT	Office\District 3\Projects\D366K23\CADData\CADsheets\D366K23	DRAWN -	REVISED -			332	(7) SFY, N-2	*	21	16	
Default	PLOT SCALE = 100.0000' / in.	CHECKED -	REVISED -			CONTRACT NO. 66K23					
	PLOT DATE = 4/4/2019	DATE -	REVISED -			SCALE:	SHEET OF SHEETS	STA. TO STA.	ILLINOIS FED. AID PROJECT		

*KANKAKEE & WILL

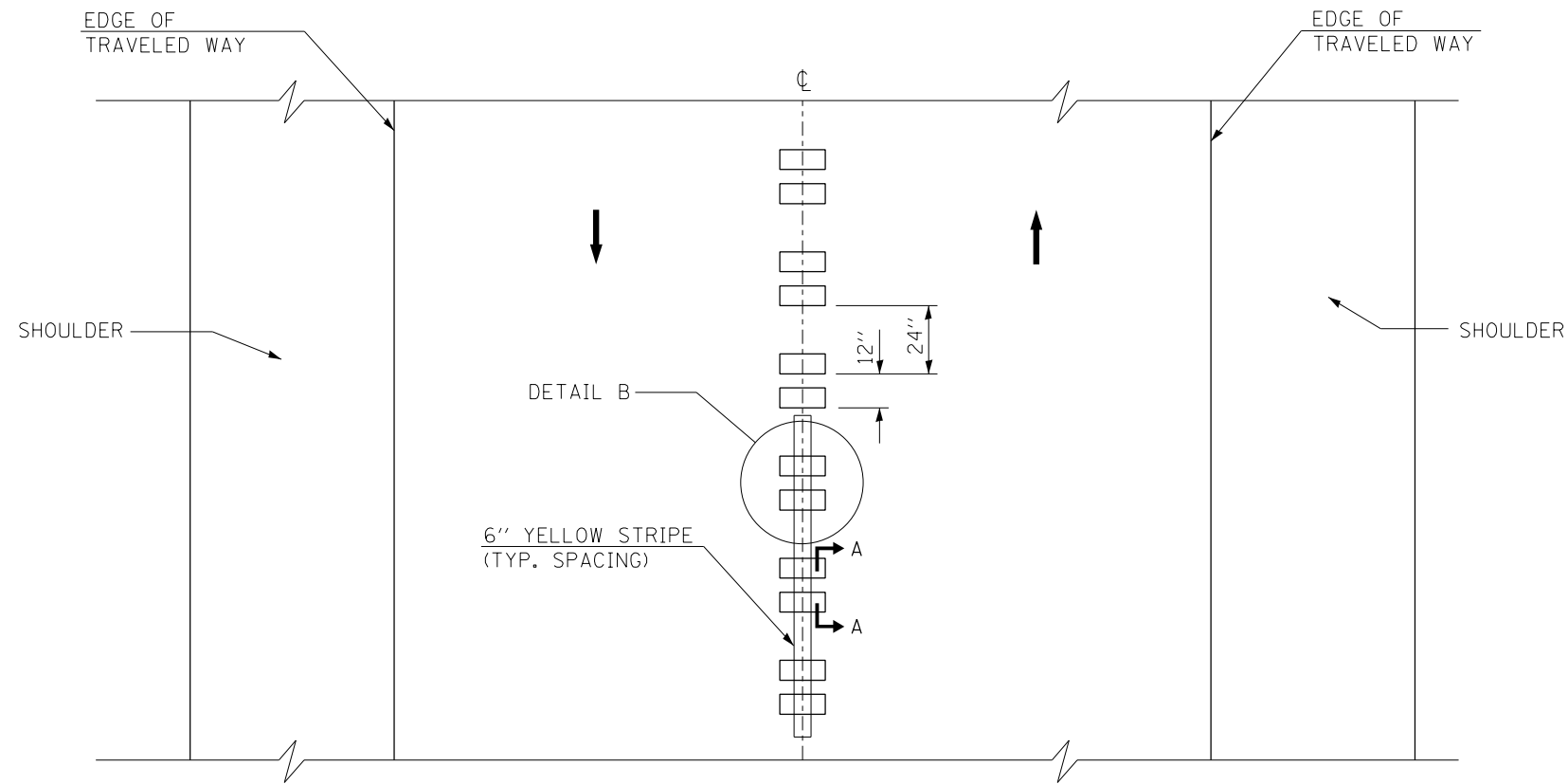


SECTION A-A



* LATERAL DEVIATION SHALL NOT EXCEED ONE INCH IN 100 FEET.

DETAIL B



TWO-WAY ROAD

CENTERLINE RUMBLE STRIP DETAIL

NOTES:

ALL RUMBLE STRIPS SHALL BE MILLED.

WHERE USED, ADJUST SPACING OF RAISED REFLECTIVE PAVEMENT MARKERS TO FALL IN WIDER GAP BETWEEN RUMBLE STRIPS.

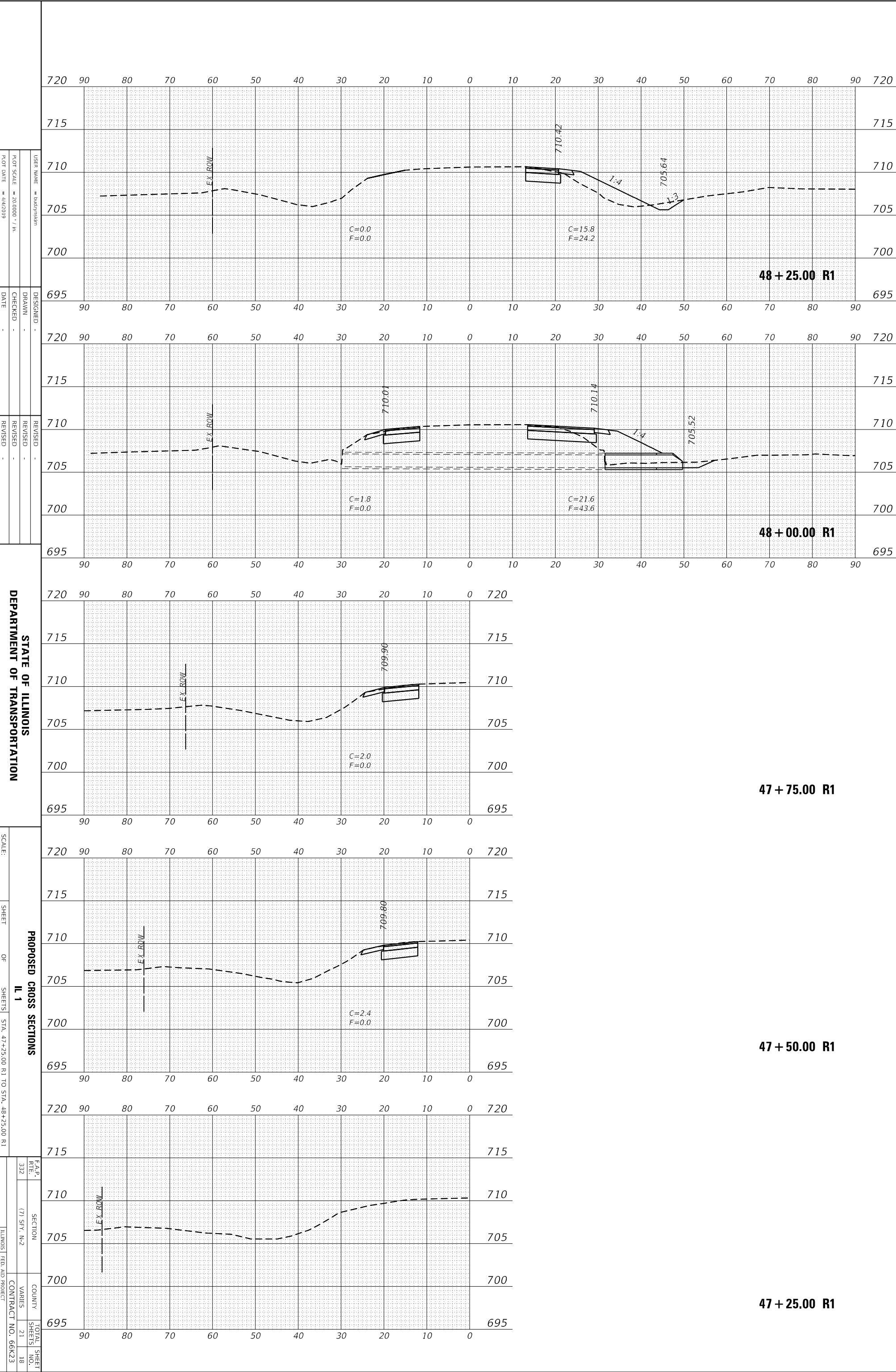
FILE NAME =		USER NAME = budzynsklm		DESIGNED -		REVISED -		STATE OF ILLINOIS DEPARTMENT OF TRANSPORTATION		DETAILS		F.A.P. RTE. =		SECTION =		COUNTY =		TOTAL SHEETS =		SHEET NO. =			
pw:\planroom.dot\illinois.gov\PWIDOT\Documents\IDOT		C:\Users\budzynsklm\Documents\IDOT		DRAWN -		REVISED -						332		(7) SFY, N-2		*		21		17			
Default		PLOT SCALE = 100.0000' / in.		CHECKED -		REVISED -						SCALE:		SHEET OF SHEETS		STA. TO STA.		ILLINOIS		FED. AID PROJECT		CONTRACT NO. 66K23	
		PLOT DATE = 4/4/2019		DATE -		REVISED -																	

*KANKAKEE & WILL

ORIGINAL SURVEY	SURVEYED	BY	DATE
NOTE BOOK	PLOTTED		
	TEMPLATE		
	AREAS		
	AREAS CHECKED		

FINAL SURVEY	SURVEYED	BY	DATE
NOTE BOOK	PLOTTED		
	TEMPLATE		
	AREAS		
	AREAS CHECKED		

MODEL: ExCL_L11
 FILE NAME: p:\w\iplanroom.dot, Illinois.gov\PWIDOT\Documents\DOT Offices\District 3\Projects\D366K23\CADData\CADdrawings\D366K23-corridorNEW.dgn



STATE OF ILLINOIS
DEPARTMENT OF TRANSPORTATION

PROPOSED CROSS SECTIONS
IL 1

SCALE: SHEET OF SHEETS STA. 47+25.00 R1 TO STA. 48+25.00 R1

48 + 25.00 R1

48 + 00.00 R1

47 + 75.00 R1

47 + 50.00 R1

47 + 25.00 R1

F.A.P. RITE	SECTION	COUNTY	TOTAL SHEET NO.
332	(7) SFV, N-2	VANIER	21
		CONTRACT NO.	66K23
		ILLINOIS FED. AID PROJECT	

ORIGINAL SURVEY	SURVEYED	BY	DATE
NOTE BOOK	PLOTTED		
	TEMPLATE		
	AREAS		
	AREAS CHECKED		

FINAL SURVEY	SURVEYED	BY	DATE
NOTE BOOK	PLOTTED		
	TEMPLATE		
	AREAS		
	AREAS CHECKED		

MODEL: EXCL_I11
 FILE NAME: p:\w\planroom.dot, Illinois.gov\PWIDOT\Documents\DOT Offices\District 3\Projects\D366K23\CADData\CADdrawings\D366K23-corridorNEW.dgn

USER NAME = ludyyskism
 PLOT SCALE = 20,000' / in.
 PLOT DATE = 4/4/2019

DESIGNED -
 DRAWN -
 CHECKED -
 DATE -

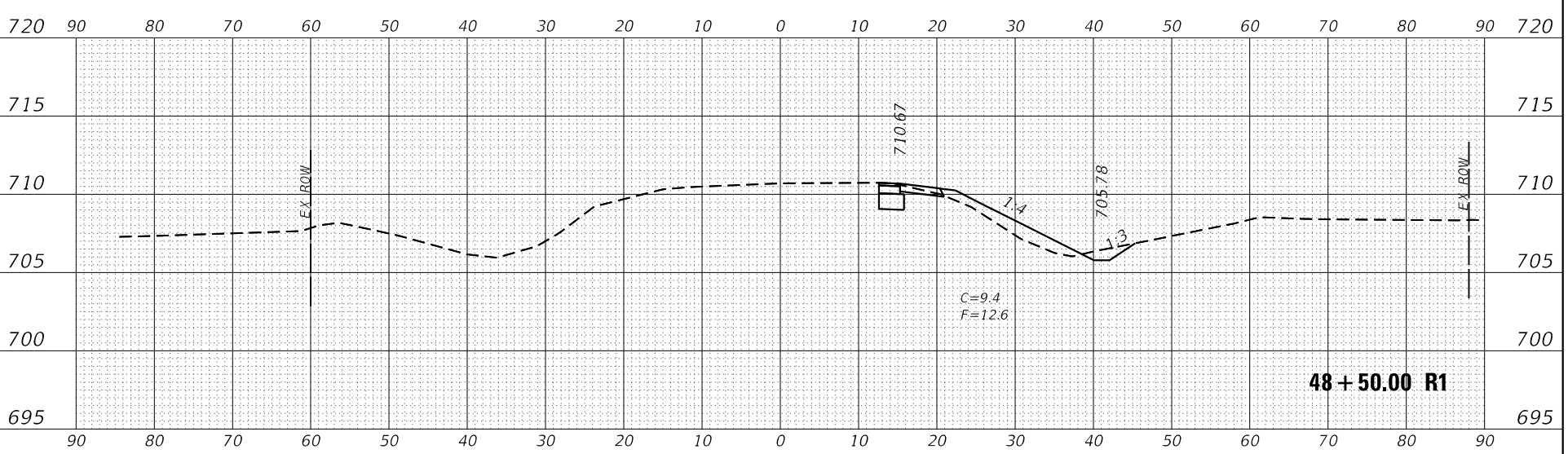
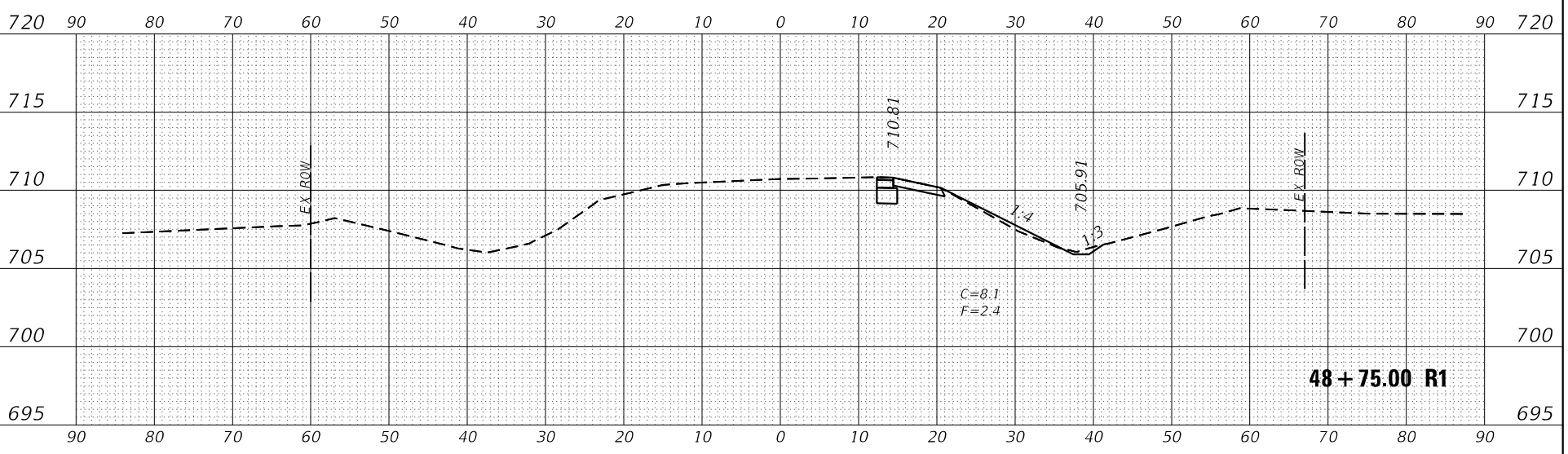
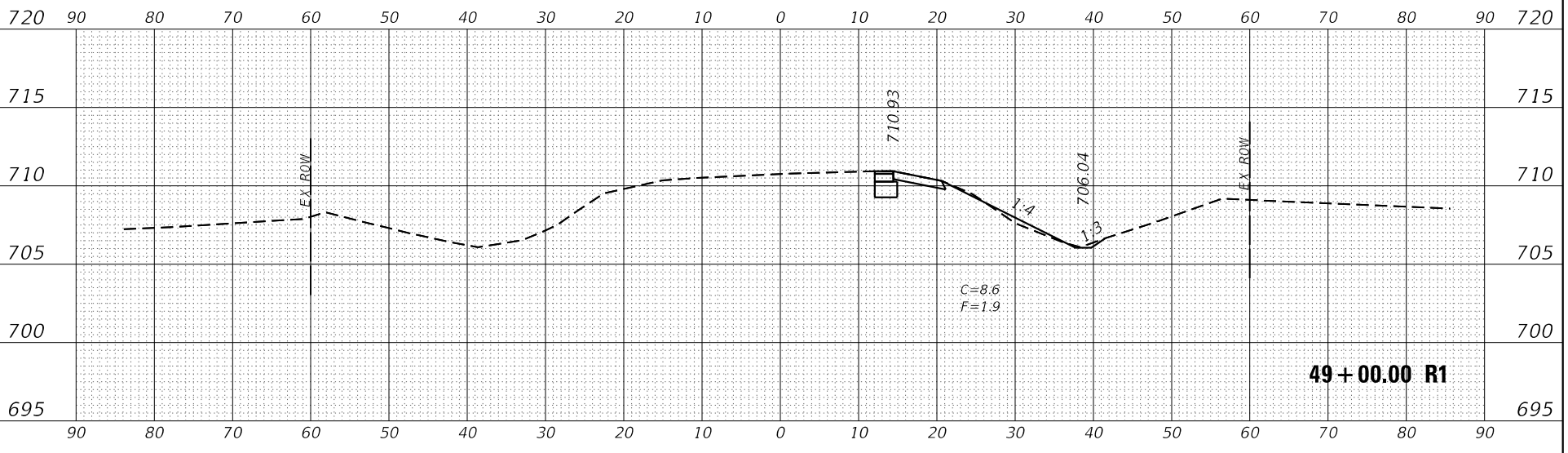
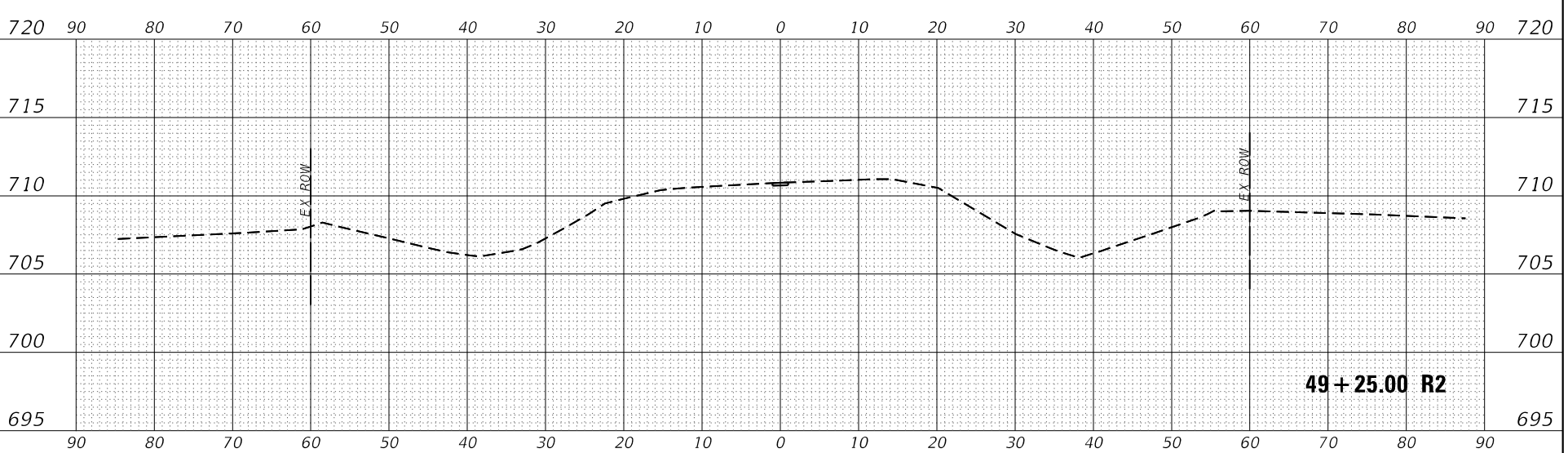
REVISED -
 REVISED -
 REVISED -
 REVISED -

STATE OF ILLINOIS
 DEPARTMENT OF TRANSPORTATION

SCALE:

PROPOSED CROSS SECTIONS
 IL 1
 SHEET OF SHEETS STA. 48+50.00 R1 TO STA. 49+25.00 R2

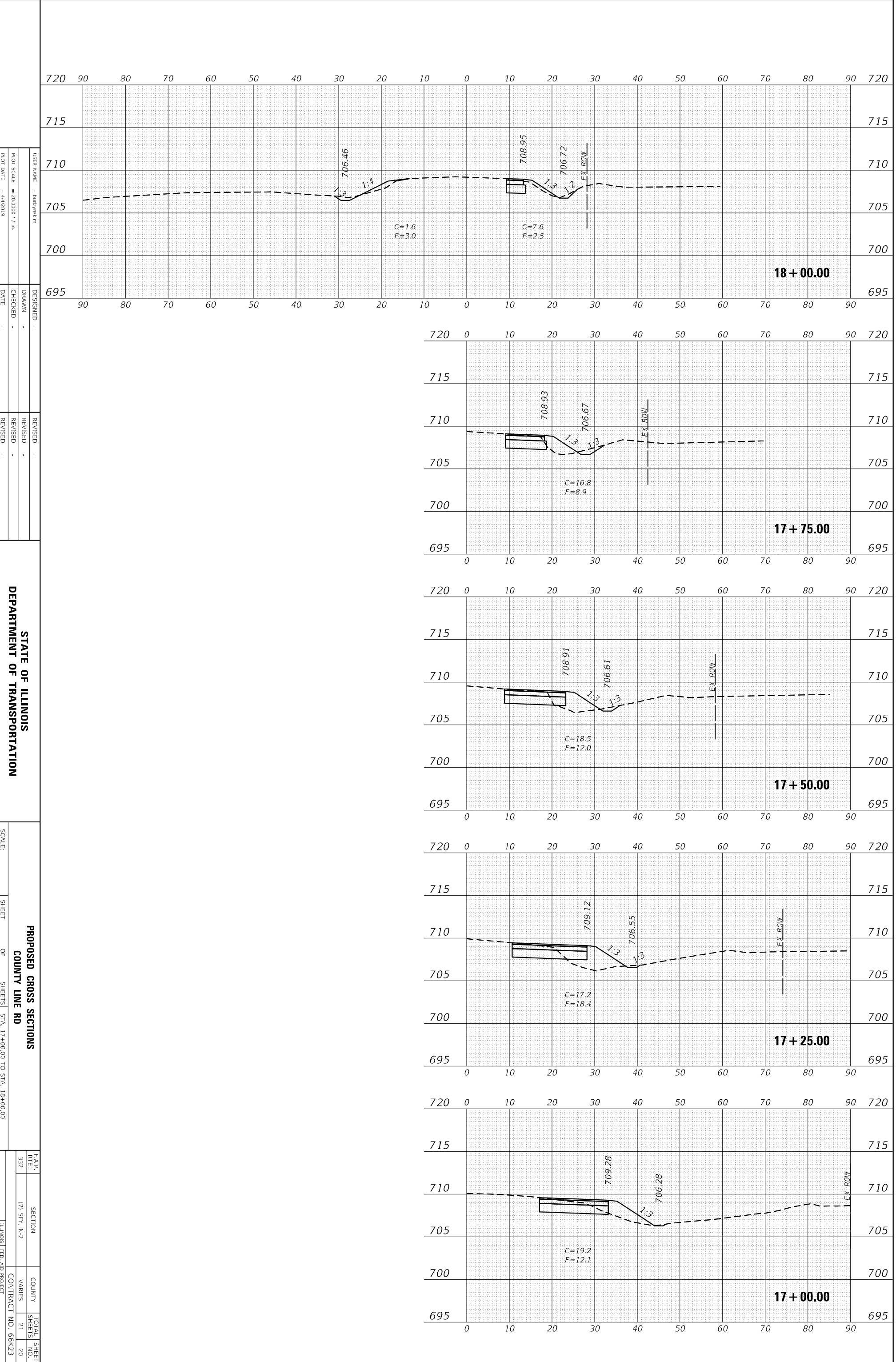
F.A.P. RITE. 332 SECTION COUNTY VARIES TOTAL SHEET SHEETS NO. 19 CONTRACT NO. 66K23 ILLINOIS FED. AID PROJECT



ORIGINAL SURVEY	SURVEYED _____	BY _____	DATE _____
NOTE BOOK	PLOTTED _____		
	TEMPLATE _____		
	AREAS _____		
	AREAS CHECKED _____		

FINAL SURVEY	SURVEYED _____	BY _____	DATE _____
NOTE BOOK	PLOTTED _____		
	TEMPLATE _____		
	AREAS _____		
	AREAS CHECKED _____		

MODEL: ExCL_Minor
 FILE NAME: p:\planroom\dot.illinois.gov\PWIDOT\Documents\DOT Offices\District 3\Projects\D366K23\CADData\CADdrawings\D366K23-corridorNEW.dgn



USER NAME = ludyyskdm
 DRAWN =
 CHECKED =
 DATE = 4/4/2019

DESIGNED =
 REVISIONS:

REVISIONS:

STATE OF ILLINOIS
 DEPARTMENT OF TRANSPORTATION

SCALE: SHEET OF SHEETS STA. 17+00.00 TO STA. 18+00.00

PROPOSED CROSS SECTIONS
 COUNTY LINE RD
 F.A.P. RTE. 332 SECTION (7) S.F.V. N-2 COUNTY VARIES TOTAL SHEET SHEETS NO. 21 20 ILLINOIS FED. AID PROJECT CONTRACT NO. 66K23

ORIGINAL SURVEY	SURVEYED _____	BY _____	DATE _____
NOTE BOOK	PLOTTED _____		
	TEMPLATE _____		
	AREAS _____		
	AREAS CHECKED _____		

FINAL SURVEY	SURVEYED _____	BY _____	DATE _____
NOTE BOOK	PLOTTED _____		
	TEMPLATE _____		
	AREAS _____		
	AREAS CHECKED _____		

MODEL: ExCL_Minor
 FILE NAME: p:\planroom.dot, Illinois.gov\PWIDOT\Documents\DOT Offices\District 3\Projects\D366K23\CADData\CADdrawings\D366K23-corridorNEW.dgn

USER NAME = ludyskism	DESIGNED -	REVISION
DRAWN -	CHECKED -	REVISION
DATE -	DATE -	REVISION

STATE OF ILLINOIS
 DEPARTMENT OF TRANSPORTATION

PROPOSED CROSS SECTIONS
 COUNTY LINE RD

F.A.R. RTE. 332	SECTION	COUNTY	TOTAL SHEET NO. 21
(7) SFY. N-2		VARIES	SHEETS 21
ILLINOIS FED. AID PROJECT		CONTRACT NO. 66K23	

