

STATE OF ILLINOIS  
DEPARTMENT OF TRANSPORTATION

F.A.P. RTE.	SECTION	COUNTY	TOTAL SHEETS	SHEET NO.
335	FAP 335 23 OVERLAY	MCHENRY	49	1
ILLINOIS			CONTRACT NO. 62V07	
* 49 + 4 = 53 TOTAL SHEETS				

FOR INDEX OF SHEETS, SEE SHEET NO. 2

THE PROJECT IS LOCATED WITHIN:  
CITY OF CRYSTAL LAKE

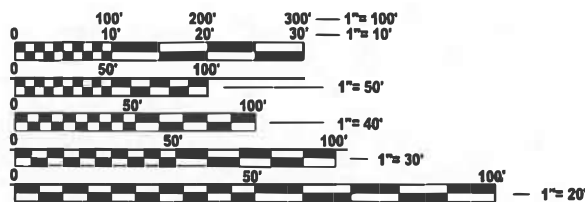
TRAFFIC DATA

2023 ADT - 12,800 - 15,100  
POSTED SPEED LIMIT - 35 MPH  
OTHER PRINCIPAL ARTERIAL

PROPOSED  
HIGHWAY PLANS

F.A.P. ROUTE 335: IL 176 (TERRA COTTA AVE)  
HICKORY DRIVE TO MISTWOOD LANE  
SECTION FAP 335 23 OVERLAY  
PROJECT NHPP-LAA9(599)  
DESIGNED OVERLAY, ADA IMPROVEMENTS  
MCHENRY COUNTY

C-91-208-23



FULL SIZE PLANS HAVE BEEN PREPARED USING STANDARD ENGINEERING SCALES. REDUCED SIZED PLANS WILL NOT CONFORM TO STANDARD SCALES. IN MAKING MEASUREMENTS ON REDUCED PLANS, THE ABOVE SCALES MAY BE USED.

J.U.L.I.E.  
JOINT UTILITY LOCATION INFORMATION FOR EXCAVATION  
1-800-892-0123  
OR 811

PROJECT ENGINEER LUKASZ POCIECHA (847) 705 - 4255  
PROJECT MANAGER VESELIN VELICHKOV

CONTRACT NO. 62V07

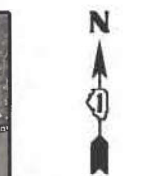
PROJECT BEGINS  
STA 23+52

RESURFACING  
OMISSION START  
STA 88+16



NUNDA TOWNSHIP

GROSS LENGTH = 13787.0 FT. = 2.61 MILE  
NET LENGTH = 11465.0 FT. = 2.17 MILE



LOCATION MAP  
(NOT TO SCALE)

PROJECT ENDS  
STA 161+39

RESURFACING  
OMISSION END  
STA 111+38

STATE OF ILLINOIS  
DEPARTMENT OF TRANSPORTATION

SUBMITTED March 18, 2024  
*[Signature]* REGIONAL ENGINEER

May 10, 2024 *[Signature]*  
ENGINEER OF DESIGN AND ENVIRONMENT

May 10, 2024 *[Signature]*  
DIRECTOR OF HIGHWAYS PROJECT IMPLEMENTATION

PRINTED BY THE AUTHORITY  
OF THE STATE OF ILLINOIS

## INDEX OF SHEETS

## STATE STANDARDS

## GENERAL NOTES

SHEET NO.	DESCRIPTION
1	TITLE SHEET
2	INDEX OF SHEETS, STATE STANDARDS, AND GENERAL NOTES
3-6	SUMMARY OF QUANTITIES
7	EROSION CONTROL PLANS
8-9	EXISTING AND PROPOSED TYPICAL SECTIONS
10-15	ROADWAY AND PAVEMENT MARKING PLANS
15A-15D	IL 120 - DRAINAGE IMPROVEMENT
16	DISTRICT 1 - MAST ARM MOUNTED STREET NAME SIGNS
17-23	DISTRICT 1 - STANDARD TRAFFIC SIGNAL DESIGN DETAILS (TS-05)
24-31	TRAFFIC SIGNAL DESIGN DETAILS AND PLANS
32-35	PEDESTRIAN RAMP DESIGN DETAILS AND PLANS
36	PROJECT DETAIL FOR SINGLE PERPENDICULAR CURB RAMPS (PD-02)
37	PROJECT DETAIL FOR DOUBLE PERPENDICULAR CURB RAMPS (PD-03)
38	DETAILS FOR FRAMES AND LIDS ADJUSTMENT WITH MILLING (BD-08)
39	PAVEMENT PATCHING FOR HMA SURFACED PAVEMENT (BD-22)
40	CURB OR CURB AND GUTTER REMOVAL AND REPLACEMENT (BD-24)
41	BUTT JOINT AND HMA TAPER DETAILS (BD-32)
42	TRAFFIC CONTROL AND PROTECTION FOR SIDE RAODS, INTERSECTIONS, AND DRIVEWAYS (TC-10)
42	TYPICAL APPLICATIONS RAISED REFLECTIVE PAVEMENT MARKERS (SNOW-PLOW RESISTANT) (TC-11)
44	DISTRICT ONE TYPICAL PAVEMEBT MARKINGS (TC-13)
45	TRAFFIC CONTROL AND PROTECTION AT TURN BAYS (TO REMAIN OPEN TO TRAFFIC) (TC-14)
46	SHORT TERM PAVEMENT MARKING LETTERS AND SYMBOLS (TC-16)
47	ARTERIAL ROAD INFORMATION SIGN (TC-22)
48	DRIVEWAY ENTRANCE SIGNING (TC-26)
49	DISTRICT 1 - DETECTOR LOOP INSTALLATION DETAILS FOR ROADWAY RESURFACING (TS-07)

STANDARD NO.	DESCRIPTION
000001-08	STANDARD SYMBOLS, ABBREVIATIONS, AND PATTERNS
424001-11	PERPENDICULAR CURB RAMPS FOR SIDEWALKS
442201-03	CLASS C AND D PATCHES
482011-03	HMA SHOULDER STRIPS WITH RESURFACING OR WIDENING & RESURFACING PROJECTS
602001-02	CATCH BASIN TYPE A
604001-05	FRAME AND LIDS, TYPE 1
604036-03	GRATE TYPE 8
604091-05	FRAME AND GRATE, TYPE 24
606001-08	CONCRETE CURB TYPE B AND COMBINATION CONCRETE CURB AND GUTTER
701006-05	OFF-ROAD OPERATIONS, 2L, 2W, 15' (4.5 m) TO 24" (600 mm) FROM PAVEMENT EDGE
701011-04	OFF-ROAD MOVING OPERATIONS, 2L, 2W, DAY ONLY
701301-04	LANE CLOSURE, 2L, 2W, SHORT TIME OPERATIONS
701311-03	LANE CLOSURE, 2L, 2W, MOVING OPERATIONS - DAY ONLY
701501-06	URBAN LANE CLOSURE, 2L, 2W, UNDIVIDED
701502-09	URBAN LANE CLOSURE, 2L, 2W, WITH BIDIRECTIONAL LEFT TURN LANE
701701-10	URBAN LANE CLOSURE, MULTILANE INTERSECTION
701801-06	SIDEWALK, CORNER OR CROSSWALK CLOSURE
701901-09	TRAFFIC CONTROL DEVICES
780001-05	TYPICAL PAVEMENT MARKINGS
781001-04	TYPICAL APPLICATIONS RAISED REFLECTIVE PAVEMENT MARKERS
880006-01	DETECTOR LOOP INSTALLATIONS
886006-01	TYPICAL LAYOUT FOR DETECTOR LOOPS

- TEN (10) FOOT TRANSITIONS SHALL BE USED TO MATCH PROPOSED CURB AND GUTTER AND MEDIAN ITEMS OF WORK TO EXISTING CURBS AND GUTTER AND MEDIANS IN THE FIELD, UNLESS OTHERWISE SHOWN.
- THE CONTRACTOR WILL NOT BE ALLOWED TO SET UP A YARD OR FIELD OFFICE ON STATE PROPERTY WITHOUT WRITTEN PERMISSION FROM THE DEPARTMENT.
- ALL MILLED SURFACES SHALL BE A UNIFORM CROSS SLOPE PER LANE AND FREE OF RIDGES BETWEEN PASSES. ANY DEVIATIONS SHALL BE CORRECTED AT NO COST TO THE DEPARTMENT.
- ALL PAVEMENT PATCHING LOCATIONS WILL BE DETERMINED IN THE FIELD BY THE RESIDENT ENGINEER.
- LOCATION OF COMBINATION CONCRETE CURB AND GUTTER REMOVAL AND REPLACEMENT (OR COMBINATION CURB AND GUTTER (THE TYPE SPECIFIED ON THE PLANS)), WILL BE DETERMINED IN THE FIELD BY THE RESIDENT ENGINEER.
- DRAINAGE ADJUSTMENT OR RECONSTRUCTION LOCATIONS WILL BE DETERMINED IN THE FIELD BY THE RESIDENT ENGINEER.
- IT SHALL BE THE CONTRACTOR'S RESPONSIBILITY TO VERIFY ALL DIMENSIONS AND CONDITIONS EXISTING IN THE FIELD PRIOR TO CONSTRUCTION AND ORDERING OF MATERIALS.
- FRAMES AND GRATES ADJUSTMENT OF PRIVATE UTILITIES WITHIN THE LIMITS OF IMPROVEMENTS SHALL BE DONE BY THEIR RESPECTIVE OWNERS AND ARE NOT PART OF THIS CONTRACT.
- SIDEWALK REMOVAL AND P.C.C. SIDEWALK 5" LOCATIONS SHALL BE DETERMINED BY THE RESIDENT ENGINEER.
- THE CONTRACTOR SHALL CONTACT KALPANA KANNAN-HOSADURGA, THE DISTRICT ONE TRAFFIC CONTROL SUPERVISOR, AT KALPANA.KANNAN-HOSADURGA@ILLINOIS.GOV A MINIMUM OF 72 HOURS IN ADVANCE OF BEGINNING WORK.
- THE RESIDENT ENGINEER SHALL CONTACT WALTER CZARNY, AREA TRAFFIC FIELD ENGINEER VIA EMAIL AT WALTER.CZARNY@ILLINOIS.GOV A MINIMUM OF TWO (2) WEEKS PRIOR TO THE PLACEMENT OF PERMANENT PAVEMENT MARKINGS.
- THE CONTRACTOR SHALL BE REQUIRED TO KEEP A RECORD OF THE LOCATIONS OF PLATED STRUCTURES BY STATION AND OFFSET LEFT OR RIGHT OF THE CENTERLINE OF PAVEMENT.
- THE CONTRACTOR SHALL BE REQUIRED TO KEEP A RECORD OF THE LOCATIONS OF THE BURIED STRUCTURES ACCORDING TO THE STATION AND DISTANCE LEFT OR RIGHT OF THE CENTERLINE OF PAVEMENT. UPON COMPLETION OF THE WORK, THE CONTRACTOR SHALL DELIVER THE RECORD TO THE ENGINEER.
- EXISTING BROKEN FRAMES AND LIDS SHALL BE REMOVED AND DISPOSED OF BY THE CONTRACTOR AND SHALL BE REPLACED AS DIRECTED BY THE ENGINEER. REPLACEMENT FRAMES AND LIDS WILL BE PAID FOR ACCORDING TO ARTICLE 109.04 OF THE STANDARD SPECIFICATIONS UNLESS A SEPARATE PAY ITEM HAS BEEN PROVIDED.
- PAVEMENT MARKING TAPE, TYPE IV SHALL BE USED FOR SHORT TERM PAVEMENT MARKINGS ON ALL FINAL SURFACES.
- ALL PAVEMENT MARKINGS SHALL BE PLACED THROUGHOUT THE IMPROVEMENT ACCORDING TO THE DISTRICT 1 TYPICAL PAVEMENT MARKINGS.
- ALL RAISED REFLECTIVE PAVEMENT MARKERS SHALL BE PLACED THROUGHOUT THE IMPROVEMENT ACCORDING TO THE DISTRICT 1 TYPICAL APPLICATIONS RAISED REFLECTIVE PAVEMENT MARKERS (SNOW-PLOW RESISTANT)
- BEFORE BEGINNING ANY WORK, THE CONTRACTOR SHALL RETAIN AND RECORD FOR FUTURE REFERENCE, ALL EXISTING PAVEMENT MARKING LINES (AND RAISED REFLECTIVE PAVEMENT MARKERS) IN ORDER THAT THESE LOCATIONS CAN BE RE-ESTABLISHED FOR STRIPING. EXACT LOCATIONS OF ALL PAVEMENT MARKINGS SHALL BE SHOWN ON THE PLANS OR AS DIRECTED BY THE ENGINEER.
- BUTT JOINTS WILL BE INSTALLED AT THE ENDS OF ALL RESURFACING (WHERE RESURFACING MEETS EXISTING PAVEMENT) ACCORDING TO THE "BUTT JOINT AND HOT-MIX ASPHALT TAPER DETAILS" SHEET INCLUDED IN THE PLANS, UNLESS OTHERWISE SPECIFIED.
- OVERNIGHT LANE CLOSURES SHALL NOT BE ALLOWED FOR REHABILITATION PROJECTS INVOLVING DAYTIME MILLING AND RESURFACING OPERATIONS AND CLASS D PATCHING UNLESS OTHER CONDITIONS WARRANT EXTENDED LANE CLOSURES AS DETERMINED AND APPROVED IN WRITING BY THE ENGINEER OR AS PROVIDED FOR IN THE CONTRACT SPECIFICATIONS.
- THE PROPOSED EXCAVATION, ANY NECESSARY SOIL TESTING, AS WELL AS THE PROPOSED INSTALLATION OF THE AGGREGATE AND/OR BASE COURSE FOR THE PAVEMENT WIDENING SHALL BE IMPLEMENTED IN A TIMELY MANNER SUCH THAT THE RESULTING DROP-OFF DEPTH AT THE END OF EACH DAY IS EQUAL TO OR LESS THAN ONE FOOT.

## RAILROAD COORDINATION NOTES

- THE CONTRACTOR MUST SECURE RAILROAD FLAGGING SERVICES WHEN WORKING IN THE VICINITY OF THE UNION PACIFIC AT-GRADE CROSSING. THE FOLLOWING IS AN APPROVED LIST OF THIRD-PARTY FLAGGING COMPANIES AT LEAST 45 DAYS IN ADVANCE OF WORK NEAR THE CROSSING:  
  
 RAILPROS:  
 EMAIL: UP.INFO@RAILPROS.COM  
 PHONE: 877-315-0513, EXT. 116  
  
 NATIONAL RAILROAD SAFETY SERVICES:  
 EMAIL: UP.REQUEST@NRSSINC.NET  
 PHONE: 877-984-6777  
 HTTPS://WWW.NRSSINC.NET/CONTACTS
- THE CONTRACTOR SHALL REFERENCE THE UNION PACIFIC FOLDER NUMBER 794241 IN ALL CORRESPONDENCE WITH THE UNION PACIFIC RAILROAD, ESPECIALLY WHEN SUBMITTING THE CONTRACTOR'S RIGHT-OF-WAY APPLICATION.
- THE CONTRACTOR SHALL COMPLETE THE E-RAIL SAFE TRAINING PRIOR TO STARTING WORK ON THE UNION PACIFIC RIGHT-OF-WAY. INFORMATION ABOUT THE E-RAIL SAFE TRAINING CAN BE ACCESSED BY USING THE FOLLOWING LINK:  
  
 HTTPS://WWW.UP.COM/ABOUTUP/COMMUNITY/SAFETY/ERAILSAFE/UP-PAT/INDEX.HTM
- THE CONTRACTOR SHALL REFERENCE THE FOLLOWING INFORMATION WHEN APPLYING FOR THE RIGHT-OF-ENTRY (ROE) PERMIT FROM THE UPRR:  
  
 UP AT IL 176 E/O PARK BLVD IN CRYSTAL LAKE:  
 CROSSING NUMBER: DOT/AAR #: 178 803B  
 CROSSING MILE POST: 58.85  
 RR SUBDIVISION: MCHENRY SUB  
 REMS PROJECT #: 794241  
  
 UP OVER IL 176 W/O WALKUP ROAD IN CRYSTAL LAKE:  
 CROSSING NUMBER: DOT/AAR #: 176 977R  
 CROSSING MILE POST: 43.36  
 RR SUBDIVISION: HARVARD SUB  
 REMS PROJECT #: 794241
- OTHER UNION PACIFIC RAILROAD REQUIREMENTS CAN BE ACCESSED BY VISITING WWW.UP.COM

MODEL: GenNotes1 [Sheet]  
 FILE NAME: p:\projects\110101\110101.dwg  
 PROJECT: 110101\110101.dwg  
 USER: nicholas.bebul  
 DATE: 5/28/2024

USER NAME = nicholas.bebul	DESIGNED -	REVISED -	REVISED - <b>1</b> NB - 5/28/2024
	DRAWN -	REVISED -	
PLOT SCALE = 0.16666633' / in.	CHECKED -	REVISED -	
PLOT DATE = 5/24/2024	DATE -	REVISED -	

**STATE OF ILLINOIS  
DEPARTMENT OF TRANSPORTATION**

**INDEX OF SHEETS, STATE STANDARDS AND GENERAL NOTES  
IL ROUTE 176 (HICKORY DRIVE TO MISTWOOD LANE)**

SCALE: SHEET 1 OF 1 SHEETS STA. TO STA.

F.A.P. RTE.	SECTION	COUNTY	TOTAL SHEETS	SHEET NO.
335	FAP 335 23 OVERLAY	MCHENRY	49	2
CONTRACT NO. 62V07			ILLINOIS   FED. AID PROJECT	

1 REVISED SHEET 5/29/2024

CODE NO	ITEM	UNIT	TOTAL QUANTITIES	0005 80% FED 20% STATE ROADWAY	0021 80% FED 20% STATE TRAFFIC SIGNALS	0005 100% STATE
20200100	EARTH EXCAVATION	CU YD	1870	1870		
21001000	GEOTECHNICAL FABRIC FOR GROUND STABILIZATION	SQ YD	685	685		
21101615	TOPSOIL FURNISH AND PLACE, 4"	SQ YD	223	123		100
21400100	GRADING AND SHAPING DITCHES	FOOT	150	50		100
25200110	SODDING, SALT TOLERANT	SQ YD	123	123		
25200200	SUPPLEMENTAL WATERING	UNIT	1.9	1.9		
21101505	TOPSOIL EXCAVATION AND PLACEMENT	CU YD	5			5
28000400	PERIMETER EROSION BARRIER	FOOT	907	786		121
30300001	AGGREGATE SUBGRADE IMPROVEMENT	CU YD	229	229		
25000210	SEEDING, CLASS 2A	ACRE	0.05			0.05
30300112	AGGREGATE SUBGRADE IMPROVEMENT, 12"	SQ YD	2738	2738		
35600709	HOT-MIX ASPHALT BASE COURSE WIDENING, 8 1/4"	SQ YD	2738	2738		
25000312	SEEDING, CLASS 4A	ACRE	0.05			0.05
40600275	BITUMINOUS MATERIALS (PRIME COAT)	POUND	6159	6159		
25000400	NITROGEN FERTILIZER NUTRIENT	POUND	5			5
40600290	BITUMINOUS MATERIALS (TACK COAT)	POUND	38611	38611		
25000600	POTASSIUM FERTILIZER NUTRIENT	POUND	5			5
40600370	LONGITUDINAL JOINT SEALANT	FOOT	28862	28862		
40600400	MIXTURE FOR CRACKS, JOINTS, AND FLANGEWAYS	TON	81	81		
40600982	HOT-MIX ASPHALT SURFACE REMOVAL - BUTT JOINT	SQ YD	475	475		
25100115	MUCH, METHOD 2	ACRE	0.05			0.05
40602985	HOT-MIX ASPHALT BINDER COURSE, IL-9.5, N70	TON	6305	6305		
28000305	TEMPORARY DITCH CHECKS	FOOT	35			35
40605026	POLYMERIZED HOT-MIX ASPHALT SURFACE COURSE, STONE MATRIX ASPHALT, 9.5, MIX "F", N80	TON	5517	5517		
42001300	PROTECTIVE COAT	SQ YD	348	348		
42400200	PORTLAND CEMENT CONCRETE SIDEWALK 5 INCH	SQ FT	1888	1888		
42400800	DETECTABLE WARNINGS	SQ FT	208	208		
44000164	HOT-MIX ASPHALT SURFACE REMOVAL, 3 3/4"	SQ YD	53552	53552		
44000600	SIDEWALK REMOVAL	SQ FT	1777	1777		
44201785	CLASS D PATCHES, TYPE I, 12 INCH	SQ YD	40	40		
44201789	CLASS D PATCHES, TYPE II, 12 INCH	SQ YD	825	825		
44201794	CLASS D PATCHES, TYPE III, 12 INCH	SQ YD	550	550		
44201796	CLASS D PATCHES, TYPE IV, 12 INCH	SQ YD	300	300		

△ REVISED SHEET 5/29/2024

\* = SPECIALTY ITEMS

MODEL: SC001 (3Sheet)  
FILE NAME: p:\work\sc001\DOT Documents\DOT Office\District 1\ORD Projects\0114623\CADData\CAD sheets\0114623-ah1-SC001.dgn

USER NAME = nicholas.besul	DESIGNED -	REVISED -
	DRAWN -	REVISED -
PLOT SCALE = 0.16666633' / in.	CHECKED -	REVISED -
PLOT DATE = 3/22/2024	DATE -	REVISED -

**STATE OF ILLINOIS  
DEPARTMENT OF TRANSPORTATION**

**SUMMARY OF QUANTITIES  
IL ROUTE 176 (HICKORY DRIVE TO MISTWOOD LANE)**

SCALE: SHEET 1 OF 4 SHEETS STA. TO STA.

F.A.P. RTE. 335	SECTION FAP 335 23 OVERLAY	COUNTY MCHENRY	TOTAL SHEETS 49	SHEET NO. 3
CONTRACT NO. 62V07				
ILLINOIS   FED. AID PROJECT				

CODE NO	ITEM	UNIT	TOTAL QUANTITIES	0005 80% FED 20% STATE ROADWAY	0021 80% FED 20% STATE TRAFFIC SIGNALS	0005 100% STATE
44213200	SAW CUTS	FOOT	6839	6839		
48102100	AGGREGATE WEDGE SHOULDER, TYPE B	TON	519	519		
550A0120	STORM SEWERS, CLASS A, TYPE 1 24"	FOOT	25			25
60250200	CATCH BASINS TO BE ADJUSTED	EACH	6	6		
60200805	CATCH BASINS TYPE A, 4' - DIAMETER, TYPE 8 GRATE	EACH	2			2
60252800	CATCH BASINS TO BE RECONSTRUCTED	EACH	2	2		
60257900	MANHOLES TO BE RECONSTRUCTED	EACH	2	2		
60300105	FRAMES AND GRATES TO BE ADJUSTED	EACH	1	1		
60404950	FRAMES AND GRATES, TYPE 24	EACH	2	2		
60406000	FRAMES AND LIDS, TYPE 1, OPEN LID	EACH	2	2		
60406100	FRAMES AND LIDS, TYPE 1, CLOSED LID	EACH	1	1		
60920012	PIPE CULVERTS TO BE CLEANED 12"	FOOT	150	150		
60920015	PIPE CULVERTS TO BE CLEANED 15"	FOOT	160	160		
61100500	EXPLORATION TRENCH 52" DEPTH	FOOT	25			25
* 66900200	NON-SPECIAL WASTE DISPOSAL	CU YD	1115	1115		
* 66900530	SOIL DISPOSAL ANALYSIS	EACH	8	8		
* 66901001	REGULATED SUBSTANCES PRE-CONSTRUCTION PLAN	L SUM	1	1		
* 66901003	REGULATED SUBSTANCES FINAL CONSTRUCTION REPORT	L SUM	1	1		
* 66901006	REGULATED SUBSTANCES MONITORING	CAL DA	6	6		
67100100	MOBILIZATION	L SUM	1	0.9		0.1
70102620	TRAFFIC CONTROL AND PROTECTION, STANDARD 701501	L SUM	1	1		
70102622	TRAFFIC CONTROL AND PROTECTION, STANDARD 701502	L SUM	1	1		
70102635	TRAFFIC CONTROL AND PROTECTION, STANDARD 701701	L SUM	1	1		
70102640	TRAFFIC CONTROL AND PROTECTION, STANDARD 701801	L SUM	1	1		
70300100	SHORT TERM PAVEMENT MARKING	FOOT	26150	26150		



1 REVISIED SHEET 5/29/2024

\* = SPECIALTY ITEMS

MODEL: S0002 [Sheet]  
 FILE NAME: P:\Info\p\benfley.com\PM\DOT\Documents\DOT Office\District 1\ORD Project\011422\CAD\Drawings\011422-eh.S000.dgn

USER NAME = nicholas.bebul	DESIGNED -	REVISED -
DRAWN -	REVISIED -	
PLOT SCALE = 0.16666633' / in.	CHECKED -	REVISED -
PLOT DATE = 3/22/2024	DATE -	REVISED -

**STATE OF ILLINOIS  
DEPARTMENT OF TRANSPORTATION**

SUMMARY OF QUANTITIES			
IL ROUTE 176 (HICKORY DRIVE TO MISTWOOD LANE)			
SCALE:	SHEET 2	OF 4	SHEETS STA. TO STA.

F.A.P. RTE.	SECTION	COUNTY	TOTAL SHEETS	SHEET NO.
335	FAP 335 23 OVERLAY	MCHENRY	49	4
CONTRACT NO. 62V07				
ILLINOIS FED. AID PROJECT				



CODE NO	ITEM	UNIT	TOTAL QUANTITIES	0005 80% FED 20% STATE ROADWAY	0021 80% FED 20% STATE TRAFFIC SIGNALS	0005 100% STATE
70300150	SHORT TERM PAVEMENT MARKING REMOVAL	SQ FT	4211	4211		
70300211	TEMPORARY PAVEMENT MARKING LETTERS AND SYMBOLS - PAINT	SQ FT	1516	1516		
70300221	TEMPORARY PAVEMENT MARKING - LINE 4"- PAINT	FOOT	65166	65166		
70300241	TEMPORARY PAVEMENT MARKING - LINE 6"- PAINT	FOOT	2070	2070		
70300251	TEMPORARY PAVEMENT MARKING - LINE 8"- PAINT	FOOT	212	212		
70300261	TEMPORARY PAVEMENT MARKING - LINE 12"- PAINT	FOOT	2601	2601		
70300281	TEMPORARY PAVEMENT MARKING - LINE 24"- PAINT	FOOT	622	622		
70307120	TEMPORARY PAVEMENT MARKING - LINE 4" - TYPE IV TAPE	FOOT	13075	13075		
* 78000100	THERMOPLASTIC PAVEMENT MARKING - LETTERS AND SYMBOLS	SQ FT	1516	1516		
* 78000200	THERMOPLASTIC PAVEMENT MARKING - LINE 4"	FOOT	65166	65166		
* 78000400	THERMOPLASTIC PAVEMENT MARKING - LINE 6"	FOOT	2070	2070		
* 78000500	THERMOPLASTIC PAVEMENT MARKING - LINE 8"	FOOT	212	212		
* 78000600	THERMOPLASTIC PAVEMENT MARKING - LINE 12"	FOOT	2601	2601		
* 78000650	THERMOPLASTIC PAVEMENT MARKING - LINE 24"	FOOT	622	622		
* 78009004	MODIFIED URETHANE PAVEMENT MARKING - LINE 4"	FOOT	12	12		
* 78100100	RAISED REFLECTIVE PAVEMENT MARKER	EACH	624	624		
78300200	RAISED REFLECTIVE PAVEMENT MARKER REMOVAL	EACH	623	623		
* 81028200	UNDERGROUND CONDUIT, GALVANIZED STEEL, 2" DIA.	FOOT	120		120	
* 85000200	MAINTENANCE OF EXISTING TRAFFIC SIGNAL INSTALLATION	EACH	2		2	
* 87900200	DRILL EXISTING HANDHOLE	EACH	5		5	
* 88600100	DETECTOR LOOP, TYPE 1	FOOT	1604		1604	
* 89502210	MODIFY EXISTING CONTROLLER CABINET	EACH	2		2	



1 REVISIED SHEET 5/29/2024

\* = SPECIALTY ITEMS

MODEL: S0003 [Sheet] FILE NAME: p:\mcr\p\benefit\com\FWIDOT\Documents\DOT Office\District 1\ORD Projects\14623\CADData\CADsheets\14623-ah\_S000.dgn

USER NAME = nicholas.besul	DESIGNED -	REVISED -
PLOT SCALE = 0.16666633' / in.	DRAWN -	REVISED -
PLOT DATE = 3/22/2024	CHECKED -	REVISED -
	DATE -	REVISED -

**STATE OF ILLINOIS  
DEPARTMENT OF TRANSPORTATION**

<b>SUMMARY OF QUANTITIES</b>	
<b>IL ROUTE 176 (HICKORY DRIVE TO MISTWOOD LANE)</b>	
SCALE:	TO STA.
SHEET 3	OF 4 SHEETS

F.A.P. RTE.	SECTION	COUNTY	TOTAL SHEETS	SHEET NO.
335	FAP 335 23 OVERLAY	MCHENRY	49	5
			CONTRACT NO. 62V07	
ILLINOIS FED. AID PROJECT				

CODE NO	ITEM	UNIT	TOTAL QUANTITIES	0005 80% FED 20% STATE ROADWAY	0021 80% FED 20% STATE TRAFFIC SIGNALS	0005 100% STATE
* 89502350	REMOVE AND REINSTALL ELECTRIC CABLE FROM CONDUIT	FOOT	165		165	
* 89502375	REMOVE EXISTING TRAFFIC SIGNAL EQUIPMENT	EACH	2		2	
89502376	REBUILD EXISTING HANDHOLE	EACH	1		1	
X0320050	CONSTRUCTION LAYOUT (SPECIAL)	L SUM	1	1		
* X1400378	PEDESTRIAN SIGNAL POST, 5 FT.	EACH	5		5	
X5021512	COFFERDAM (TYPE 1) (IN-STREAM/WETLAND WORK)	EACH	1			1
X2020110	GRADING AND SHAPING SHOULDERS	UNIT	47	47		
X4060995	TEMPORARY RAMP (SPECIAL)	SQ YD	703	703		
X4400501	COMBINATION CURB AND GUTTER REMOVAL AND REPLACEMENT LESS THAN OR EQUAL TO 10 FEET	FOOT	33	33		
X4400503	COMBINATION CURB AND GUTTER REMOVAL AND REPLACEMENT GREATER THAN 10 FEET	FOOT	563	563		
X6025604	PROPOSED MANHOLE/CATCH BASIN CONNECTION OVER EXISTING STORM SEWER	EACH	1			1
X6030310	FRAMES AND LIDS TO BE ADJUSTED (SPECIAL)	EACH	41	41		
X6350120	DELINEATOR REMOVAL	EACH	3	3		
X6700407	ENGINEER'S FIELD OFFICE, TYPE A (D1)	CAL MO	6	6		
* X8760200	ACCESSIBLE PEDESTRIAN SIGNALS	EACH	12		12	
* X8780012	CONCRETE FOUNDATION, TYPE A 12-INCH DIAMETER	FOOT	20		20	
* X8860105	DETECTOR LOOP REPLACEMENT	FOOT	766		766	
* Z0033044	RE-OPTIMIZE TRAFFIC SIGNAL SYSTEM LEVEL 1	EACH	2		2	
Z0013798	CONSTRUCTION LAYOUT	L SUM	1			1
Z0018500	DRAINAGE STRUCTURES TO BE CLEANED	EACH	54			54
Z0030850	TEMPORARY INFORMATION SIGNING	SQ FT	514.4	463		51.4
Z0048665	RAILROAD PROTECTIVE LIABILITY INSURANCE	L SUM	1	1		

△ REVISIED SHEET 5/29/2024

\* = SPECIALTY ITEMS

MODEL: SDC04 [Sheet]  
FILE NAME: p:\projects\benley.com\PM\DOT\Documents\DOT Office\District 1\ORD Project\114623\CAD\Drawings\114623-01.SDC.dgn

USER NAME = nicholas.bebul	DESIGNED -	REVISED -
	DRAWN -	REVISED -
PLOT SCALE = 0.16666633' / in.	CHECKED -	REVISED -
PLOT DATE = 3/22/2024	DATE -	REVISED -

**STATE OF ILLINOIS  
DEPARTMENT OF TRANSPORTATION**

**SUMMARY OF QUANTITIES  
IL ROUTE 176 (HICKORY DRIVE TO MISTWOOD LANE)**

SCALE: SHEET 4 OF 4 SHEETS STA. TO STA.

F.A.P. RTE.	SECTION	COUNTY	TOTAL SHEETS	SHEET NO.
335	FAP 335 23 OVERLAY	MCHENRY	49	6
			CONTRACT NO. 62V07	
ILLINOIS FED. AID PROJECT				

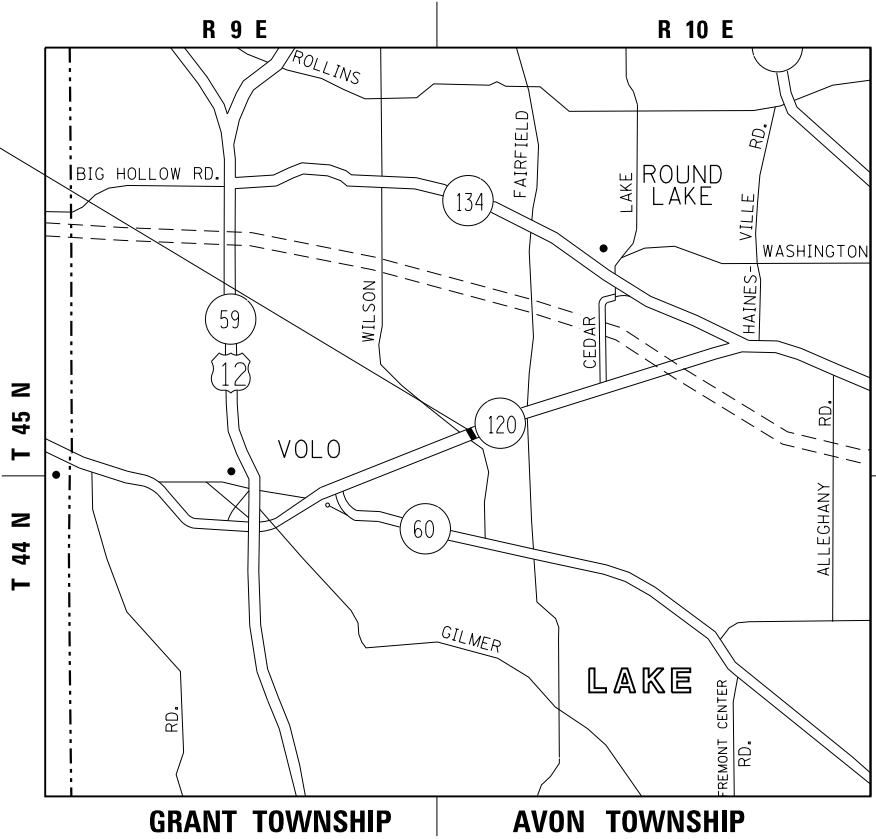
# FAP ROUTE 333: IL 120 0.25 MILES E OF WILSON RD DRAINAGE IMPROVEMENTS LAKE COUNTY

THE IMPROVEMENT IS LOCATED IN  
UNINCORPORATED AVON TOWNSHIP

**TRAFFIC DATA:**

2023 ADT = 15,400  
SPEED LIMIT = 50 MPH

PROJECT LOCATION



GROSS LENGTH = NET LENGTH = 100 FT. = 0.02 MILES

**INDEX OF SHEETS**

DESCRIPTION	SHEET NO.
15A	IL 120 PROJECT LOCATION, INDEX OF SHEETS, STANDARDS
15B	EXISTING DRAINAGE PLAN
15C	EROSION CONTROL PLAN
15D	PROPOSED DRAINAGE PLAN

**HIGHWAY STANDARDS**

STANDARD NO.	DESCRIPTION
602001-02	CATCH BASIN TYPE A
604036-03	GRATE TYPE 8
701006-05	OFF-RD OPERATIONS, 2L, 2W, 15' (4.5m) TO 24" (600mm) FROM PAVEMENT EDGE
701901-09	TRAFFIC CONTROL DEVICES

△ REVISED ENTIRE SHEET 5/29/2024

MODEL: Default  
 FILE: h:\mfc\_paw\lisc-paw\benefit.com\PI\DOT\Documents\DOT\_Offices\Drh\drct\_1\Projects\113519\CADD\Draws\Drawings\113519-Sub\drain\_A\delendum.dgn

USER NAME = nicholas.babul	DESIGNED -	REVISED - △ 5/28/2024
	DRAWN -	REVISED -
PLOT SCALE = 100,0000 ' / in.	CHECKED -	REVISED -
PLOT DATE = 5/24/2024	DATE -	REVISED -

**STATE OF ILLINOIS  
DEPARTMENT OF TRANSPORTATION**

**IL 120 (0.25 MILES EAST OF WILSON RD.)  
LOCATION MAP, INDEX OF SHEETS & STATE STANDARDS**

SCALE: SHEET OF SHEETS STA. TO STA.

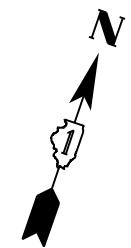
F.A.P. RTE.	SECTION	COUNTY	TOTAL SHEETS	SHEET NO.
335	FAP 335 23 OVERLAY	MCHENRY	49	15A
			CONTRACT NO. 62V07	
			ILLINOIS FED. AID PROJECT	



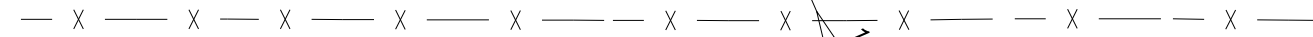
**IMPROVEMENT BEGINS  
STA. 9 + 50**

**IMPROVEMENT ENDS  
STA. 10 + 50**

**IL. ROUTE 120**



EXIST. FENCE



JUNC. BOX (7-8' x 3.5' INSIDE)

18" CLAY DRAIN TILE

MANHOLE, TYPE A,  
6'-DIAMETER

18" PVC

15" PVC

9

10+00

11

30" RCP

24" RCP

JUNCTION BOX

CATCH BASIN, TYPE A,  
6'-DIA, TYPE 8 GRATE

12" PVC

12" PVC

CATCH BASIN

18" CLAY DRAIN TILE

REVISED ENTIRE SHEET 5/29/2024

MODEL: Default  
FILE: h:\mhc\paw\_bentley.com\p\w\dot\Documents\DOT\_Offices\Drh\dot\_1\Projects\113519\CADD\data\Drawings\113519\_sht-drain\_A\drain.dgn

USER NAME = nicholas.babul	DESIGNED -	REVISED -  5/28/2024
	DRAWN -	REVISED -
PLOT SCALE = 20.0000 ' / in.	CHECKED -	REVISED -
PLOT DATE = 5/24/2024	DATE -	REVISED -

**STATE OF ILLINOIS  
DEPARTMENT OF TRANSPORTATION**

**EXISTING DRAINAGE PLAN  
IL ROUTE 120 (0.25 MILES EAST OF WILSON RD.)**

SCALE: 1"=10' SHEET OF SHEETS STA. TO STA.

F.A.P. RTE.	SECTION	COUNTY	TOTAL SHEETS	SHEET NO.
335	FAP 335 23 OVERLAY	MCHENRY	49	15B
CONTRACT NO. 62V07			ILLINOIS FED. AID PROJECT	

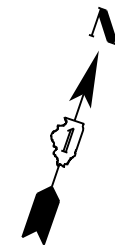




**IMPROVEMENT BEGINS  
STA. 9 + 50**

**IMPROVEMENT ENDS  
STA. 10 + 50**

**IL. ROUTE 120**



EXIST. 18" CLAY  
DRAIN TILE

PROP. CATCH BASIN #2, TYPE A, 4'-DIAMETER, TYPE 8 GRATE  
W INV. = INV. "A" + 0.1'  
S INV. = INV. "A" + 0.1'

PROP. 24" STORM SEWER, CLASS A, TYPE 1

PROP. 24" STORM SEWER, CLASS A, TYPE 1

PROP. CATCH BASIN #1, TYPE A, 4'-DIAMETER, TYPE 8 GRATE  
ADJUST LOCATION TO BE EXACTLY OVER EXIST. DRAIN TILE  
NW INV. = MAINTAIN EXIST. DRAIN TILE INV.  
E INV. = MATCH EXIST. DRAIN TILE INV. = INV. "A"  
SE INV. = MAINTAIN EXIST. DRAIN TILE INV.

EXIST. MANHOLE, TYPE A, 6' DIA.  
CONNECT PROP. S.S. TO EXIST. MANHOLE  
N INV. = INV. "A" + 0.2'

EXIST. 18" DRAIN TILE FROM THE  
JUNCTION CHAMBER TO BE MAINTAINED.

9

10+00

11


OBSERVED SINKHOLE.  
EXCAVATE AND CONFIRM CONDITION.  
IMPLEMENT REPAIR AS NEEDED.

**LEGEND**

 PERIMETER EROSION BARRIER

 REVISED ENTIRE SHEET 5/29/2024

MODEL: Default  
FILE: h:\mhc\paw\benefit\com\paw\DOT\Documents\DOT\_Offices\Drh\drct\_1\Projects\113519\CADD\Drawings\113519-shr-drain\_Adsheet.mxd

USER NAME = nicholas.babul	DESIGNED -	REVISED -  5/28/2024
PLOT SCALE = 20.0000 ' / in.	DRAWN -	REVISED -
PLOT DATE = 5/24/2024	CHECKED -	REVISED -
	DATE -	REVISED -

**STATE OF ILLINOIS  
DEPARTMENT OF TRANSPORTATION**

**PROPOSED DRAINAGE PLAN  
IL ROUTE 120 (0.25 MILES EAST OF WILSON RD.)**

SCALE: 1"=10' SHEET OF SHEETS STA. TO STA.

F.A.P. RTE.	SECTION	COUNTY	TOTAL SHEETS	SHEET NO.
335	FAP 335 23 OVERLAY	MCHENRY	49	15C
ILLINOIS FED. AID PROJECT			CONTRACT NO. 62V07	

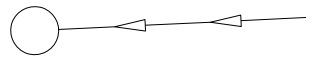
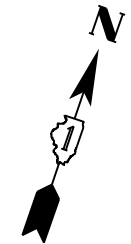
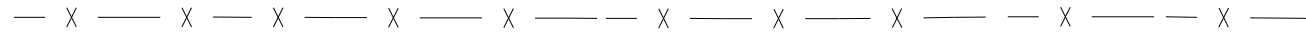


**IMPROVEMENT BEGINS  
STA. 9 + 50**

**IMPROVEMENT ENDS  
STA. 10 + 50**

**IL. ROUTE 120**

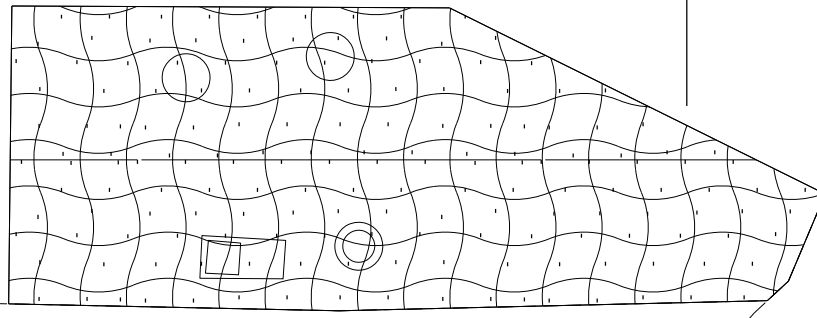
EXIST. FENCE



9

10+00

11




**LEGEND**



EROSION CONTROL BLANKET  
AND SEEDING, TYPE 2A & 4A

 REVISED ENTIRE SHEET 5/29/2024

MODEL: Default  
FILE: h:\mhc\paw\beentley.com\PI\DOT\Documents\DOT\_Offices\DHrdct\_1\Projects\113519\CADD\data\Drawn\113519-shr-drain\_Adsheet.dwg

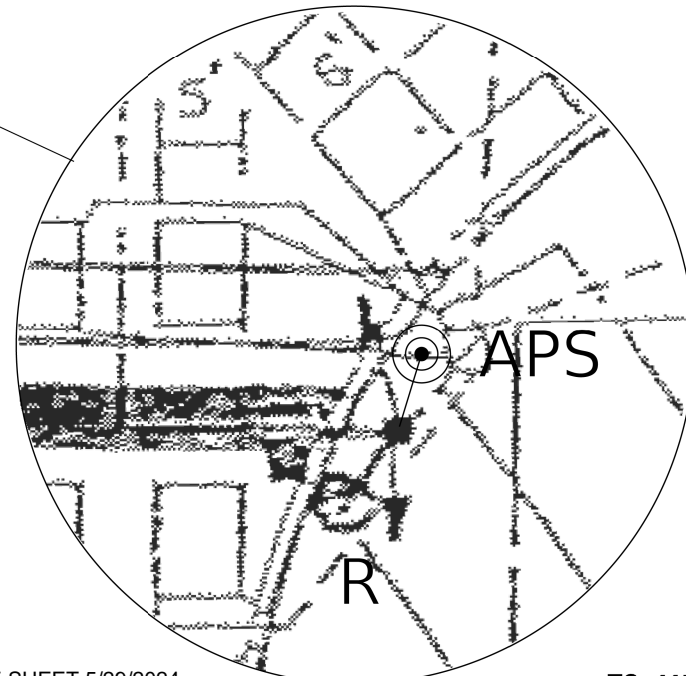
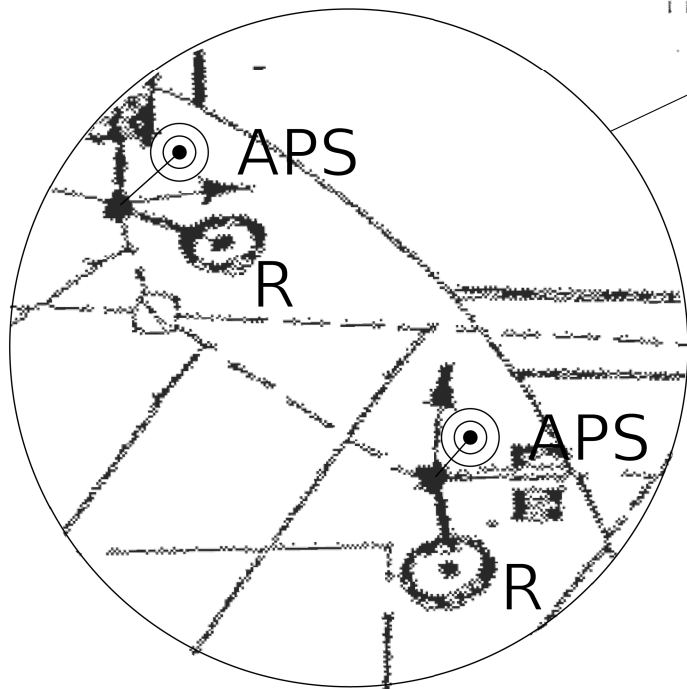
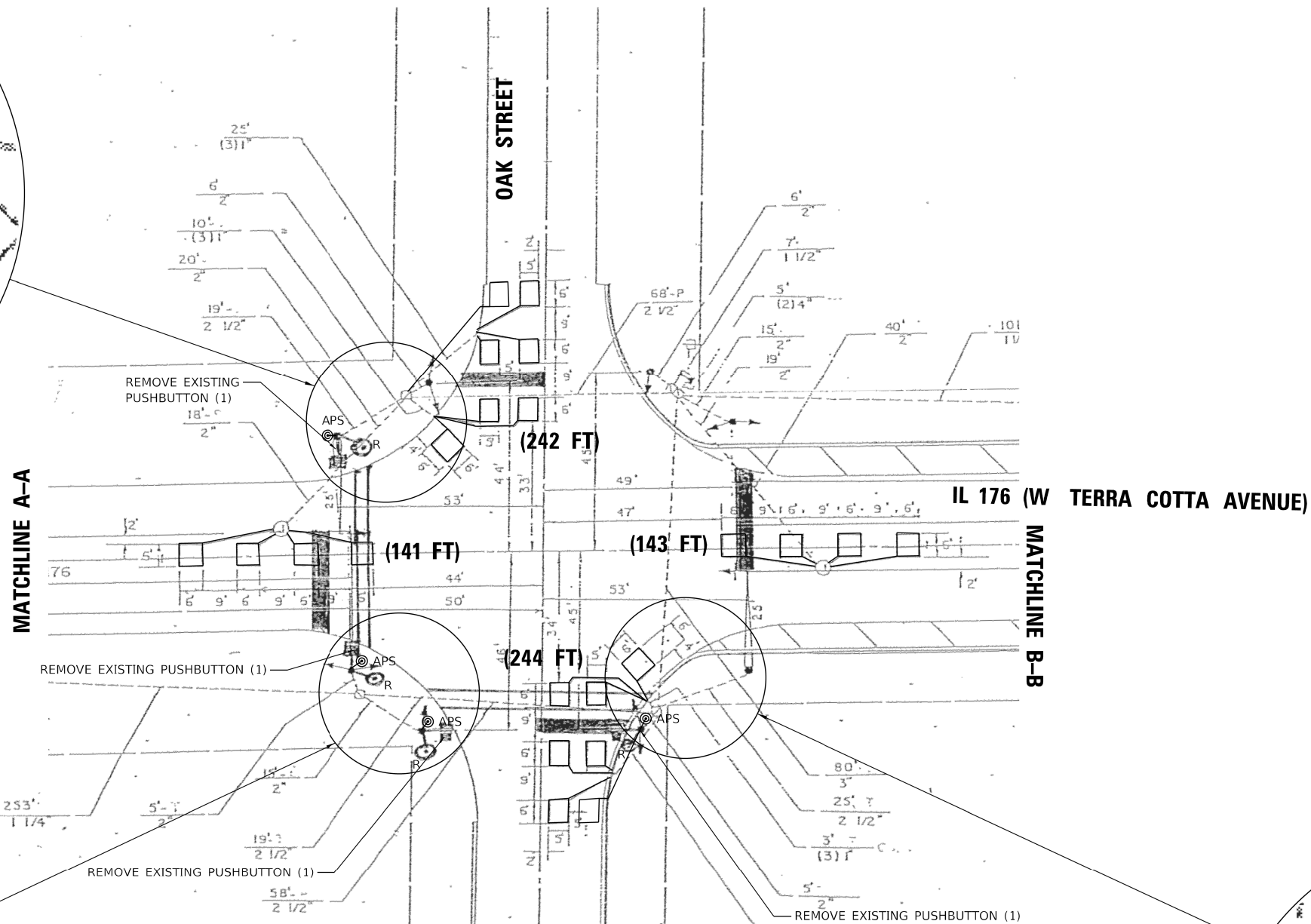
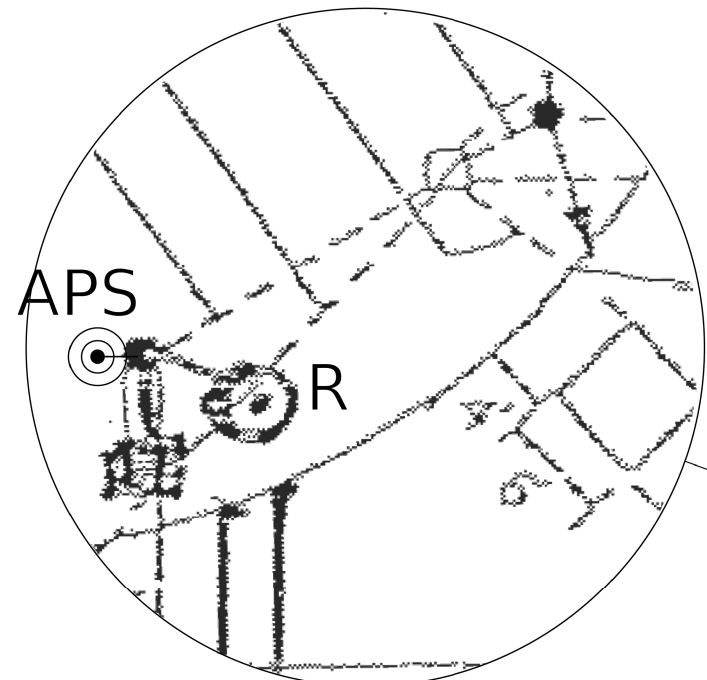
USER NAME = nicholas.babul	DESIGNED -	REVISED -  5/28/2024
PLOT SCALE = 20.0000 ' / in.	DRAWN -	REVISED -
PLOT DATE = 5/24/2024	CHECKED -	REVISED -
	DATE -	REVISED -

**STATE OF ILLINOIS  
DEPARTMENT OF TRANSPORTATION**

**LANDSCAPING PLAN**  
**IL ROUTE 120 (0.25 MILES EAST OF WILSON RD.)**

SCALE: 1"=10'    SHEET    OF    SHEETS    STA.    TO STA.

F.A.P. RTE.	SECTION	COUNTY	TOTAL SHEETS	SHEET NO.
335	FAP 335 23 OVERLAY	MCHENRY	49	15D
ILLINOIS FED. AID PROJECT			CONTRACT NO. 62V07	



**NOTES:**

1. THE FOLLOWING ITEMS SHALL BE REMOVED BY THE CONTRACTOR AND SHALL BE DISPOSED OF BY THEM OUTSIDE THE RIGHT-OF-WAY AT THEIR EXPENSE. THE SALVAGE VALUE OF THE REMOVAL EQUIPMENT SHALL BE REFLECTED IN THE CONTRACT BID PRICE.
- 4 EACH PEDESTRIAN PUSH-BUTTON
2. ALL EXISTING PEDESTRIAN PUSH-BUTTONS SHALL BE REMOVED.
3. CONTRACTOR SHALL PERFORM SIGNAL WORK IN SUCH A WAY AS TO MINIMIZE THE TIME THE EXISTING PEDESTRIAN EQUIPMENT IS INOPERATIONAL.
4. CONTRACTOR SHALL CONFIRM THE FINAL LOCATION OF THE PEDESTRIAN EQUIPMENT BEFORE INSTALLATION WITH THE TRAFFIC SIGNAL AREA ENGINEER BEFORE INSTALLATION.
5. DIMENSIONS SHOWN ARE FROM CENTER OF POST TO BACK OF CURB AND ARE APPROXIMATE AND PLACEMENT OF THE POST SHALL BE VERIFIED WITH THE ENGINEER PRIOR TO THE START OF WORK
6. APS SHALL BE PLACED PARALLEL TO THE CORRESPONDING CROSS WALK.
7. STATIONING SHOWN ON THE TRAFFIC SIGNAL PLAN ARE FROM RECORD DRAWINGS AND MAY NOT MATCH OTHER PLANS.
8. WHERE TRAFFIC SIGNAL EQUIPMENT WAS REMOVED AND THE EXISTING CABLE IS NOT BEING REUSED, THE EXISTING ELECTRICAL CABLE SHALL BE REMOVED FROM CONDUIT.
9. THE CONTRACTOR SHALL UTILIZE THE EXISTING UNIDUCT FOR THE PROPOSED LOOP DETECTORS.
10. PUSH-BUTTON EXTENSIONS ARE REQUIRED WHERE PEDESTRIAN PUSH-BUTTON LOCATIONS/INSTALLATIONS DO NOT MEET THE REQUIREMENTS OF THE MUTCD OR THE INFORMATION FOUND IN THE "AMERICANS WITH DISABILITIES ACT ACCESSIBILITY GUIDELINES FOR BUILD AND FACILITIES". THE PUSH-BUTTON EXTENSIONS SHALL BE INCLUDED IN THE COST OF THE ACCESSIBLE PEDESTRIAN SIGNALS.

⚠️ REVISED ENTIRE SHEET 5/29/2024

TS SHT NO. 9

TS 11565



PLOT DRIVER = SPLTRVSS	DESIGNED - WBL	REVISED - ⚠️ 5/28/2024
PEN TABLE = SPENBLSS	DRAWN - MMC	REVISED -
PLOT SCALE = 40.0000" / in.	CHECKED - BKS	REVISED -
PLOT DATE = 5/22/2024 10:34:17 AM	DATE - 12/26/2023	REVISED -

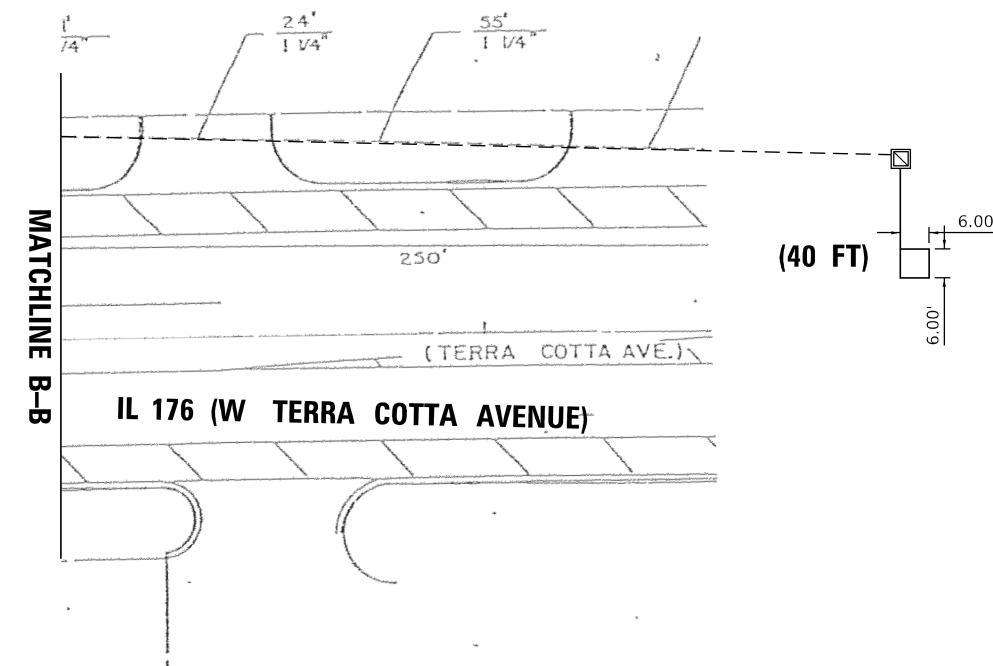
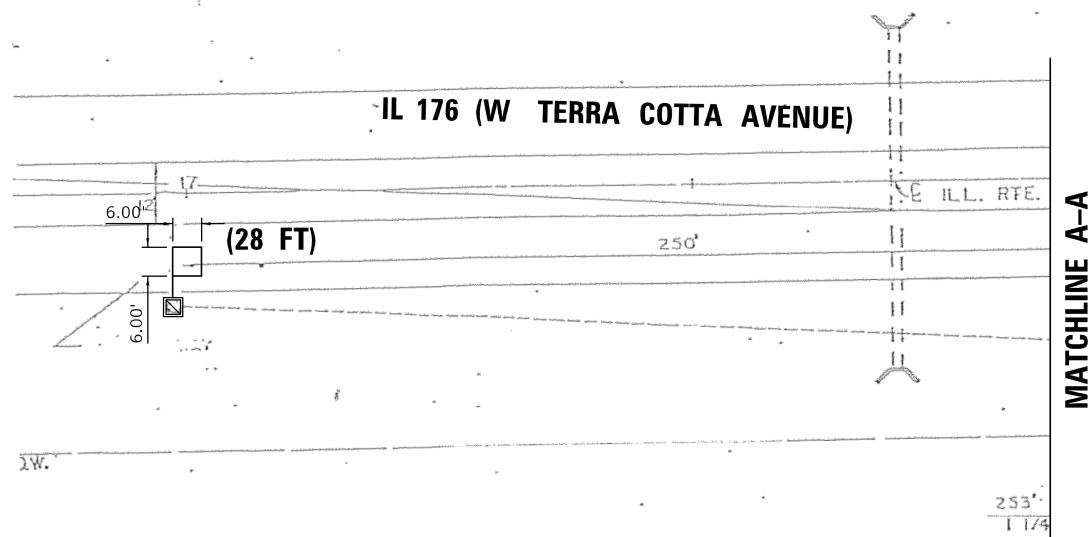
STATE OF ILLINOIS  
DEPARTMENT OF TRANSPORTATION

TRAFFIC SIGNAL DESIGN DETAILS AND PLANS - OAK ST.  
IL ROUTE 176 (HICKORY DRIVE TO MISTWOOD LANE)

SCALE: SHEET OF SHEETS STA. TO STA.

F.A.P. RTE.	SECTION	COUNTY	TOTAL SHEETS	SHEET NO.
335	FAP 335 23 OVERLAY	MCHENRY	49	24
CONTRACT NO. 62V07				
ILLINOIS FED. AID PROJECT				

USER: wilson  
MODEL: Design  
FILE: 134\_001\_DUZ\_IDOT\_Traffic\_Design\_PlanDrawnWork\_Order\_21CADD/CADD\_Sheet02V0707-IL1760345-efinal\_plan.dwg



**NOTES:**

1. CONTRACTOR SHALL PERFORM SIGNAL WORK IN SUCH A WAY AS TO MINIMIZE THE TIME THE EXISTING PEDESTRIAN EQUIPMENT IS INOPERATIONAL.
2. STATIONING SHOWN ON THE TRAFFIC SIGNAL PLAN ARE FROM RECORD DRAWINGS AND MAY NOT MATCH OTHER PLANS.
3. THE CONTRACTOR SHALL UTILIZE THE EXISTING UNIDUCT FOR THE PROPOSED LOOP DETECTORS.
4. EACH DETECTOR LOOP SHALL HAVE ITS OWN 1" COILABLE NON-METALLIC CONDUIT BETWEEN THE EDGE OF PAVEMENT AND THE ADJACENT HANDHOLE AS SHOWN ON THE PLAN AND AS STATED IN THE TRAFFIC SIGNAL SPECIFICATIONS.
5. WORK SHALL MEET THE REQUIREMENTS OF THE SPECIAL PROVISIONS, DETECTOR LOOP REPLACEMENT AND/OR INSTALLATION (ROADWAY GRINDING, RESURFACING, AND PATCHING OPERATIONS).
6. THIS PLAN IS FOR THE REMOVAL OF PUSH BUTTONS, INSTALLATION OF APS PUSH BUTTONS, AND REPLACEMENT OF LOOP DETECTORS WITHIN THE RESURFACING LIMITS AS SHOWN.
7. ALL PUSH BUTTONS SHALL BE APS.

TS SHT NO. 10

USER: wblorion  
 MODEL: Design  
 FILE NAME: P:\C\_134\_001\_DUZ\_IDOT\_Traffic\_Design\_PMD\Design\Work\_Order\_2\ICADD\CADD\_Sheet\02\07062\07-IL176\04\5-Design\_Plan\_2.dgn



PLOT DRIVER = SPLTRVSS	DESIGNED - WBL	REVISED -  5/28/2024
PEN TABLE = SPENBLS5	DRAWN - MMC	REVISED -
PLOT SCALE = 40.0000' / in.	CHECKED - BKS	REVISED -
PLOT DATE = 5/22/2024 10:35:14 AM	DATE - 12/26/2023	REVISED -

STATE OF ILLINOIS  
 DEPARTMENT OF TRANSPORTATION

TRAFFIC SIGNAL DESIGN DETAILS AND PLANS - OAK ST.  
 IL ROUTE 176 (HICKORY DRIVE TO MISTWOOD LANE)

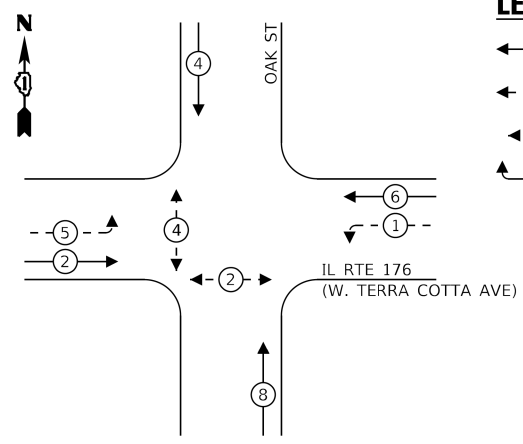
SCALE: SHEET OF SHEETS STA. TO STA.

REVISED ENTIRE SHEET 5/29/2024 TS 11565

F.A.P. RTE.	SECTION	COUNTY	TOTAL SHEETS	SHEET NO.
335	FAP 335 23 OVERLAY	MCHENRY	49	25
			CONTRACT NO. 62V07	
ILLINOIS FED. AID PROJECT				



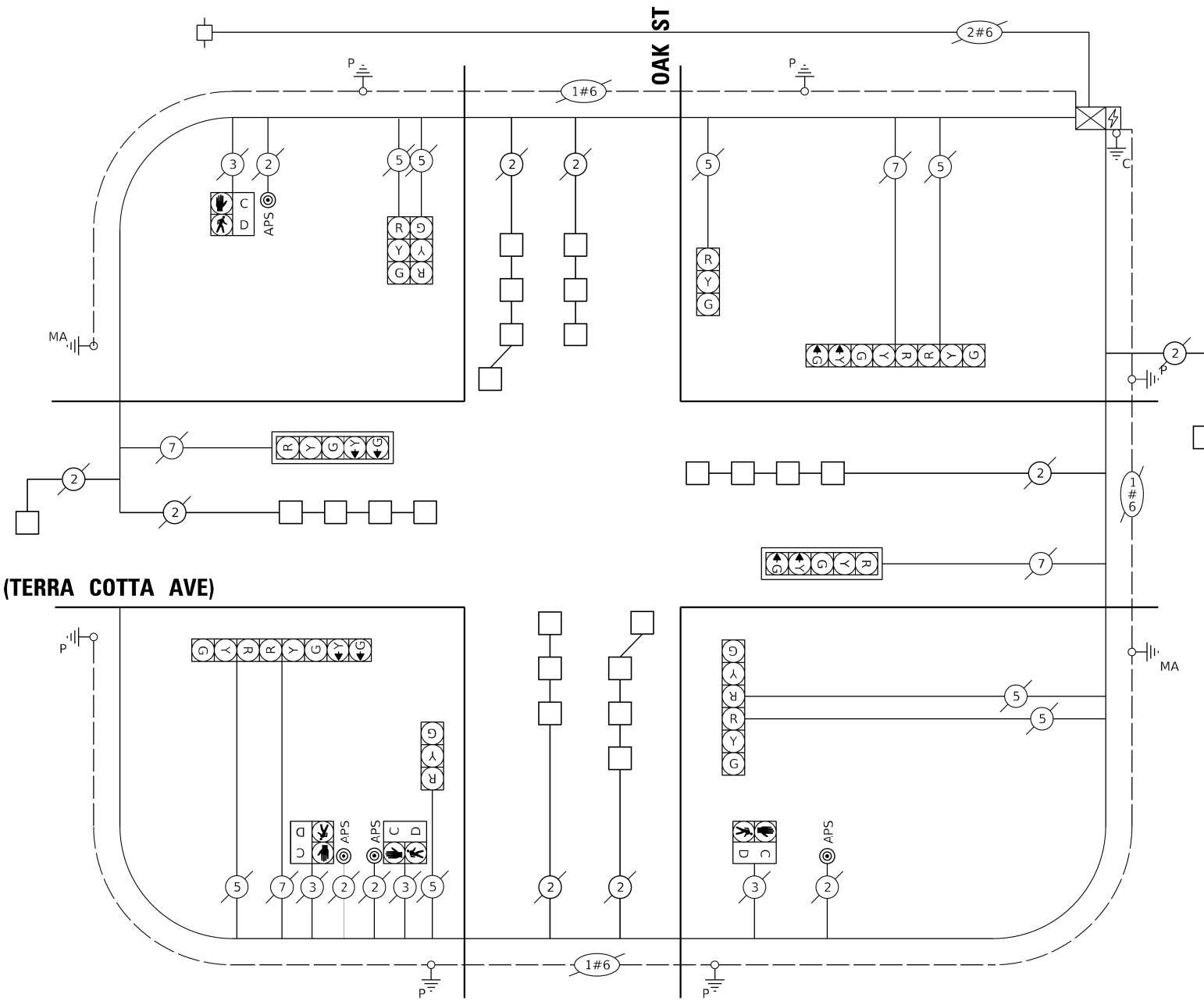
**EXISTING CONTROLLER SEQUENCE**



**LEGEND:**

- ← ⊛ ← PROTECTED PHASE
- ← ⊛ - - PROTECTED/PERMITTED PHASE
- ← ⊛ → PEDESTRIAN PHASE
- ← ⊛ OL OVERLAP

**IL RTE 176 (TERRA COTTA AVE)**



**CABLE PLAN**  
(NOT TO SCALE)

**TRAFFIC SIGNAL ELECTRICAL SERVICE REQUIREMENTS**

TYPE	NO. OF LAMPS	LED WATTAGE	% OPERATION	TOTAL WATTAGE
SIGNAL (RED)	12	11	50	66
(YELLOW)	12	20	5	12
(GREEN)	12	12	45	64.8
PERMISSIVE ARROW	16	10	10	16
PED. SIGNAL	4	20	100	80
CONTROLLER	1	100	100	100
UPS	1	25	100	25
VIDEO SYSTEM	-	150	100	-
BLANK-OUT SIGN	-	25	5	-
FLASHER	-	-	50	-
STREET NAME SIGN	-	120	50	-
LUMINAIRE	-	-	-	-
TOTAL =				363.8

**SCHEDULE OF QUANTITIES**

ITEM DESCRIPTION	UNIT	TOTAL QTY
MAINTENANCE OF EXISTING TRAFFIC SIGNAL INSTALLATION	EACH	1
DETECTOR LOOP, TYPE I	FOOT	838
MODIFY EXISTING CONTROLLER CABINET	EACH	1
REMOVE EXISTING TRAFFIC SIGNAL EQUIPMENT	EACH	1
REBUILD EXISTING HANDHOLE	EACH	1
ACCESSIBLE PEDESTRIAN SIGNALS	EACH	4
RE-OPTIMIZE TRAFFIC SIGNAL SYSTEM LEVEL 1	EACH	1

ENERGY COSTS TO:

CITY OF CRYSTAL LAKE  
100 W WOODSTOCK STREET  
CRYSTAL LAKE, IL 60014

ENERGY SUPPLY: CONTACT: JOE STACHO  
PHONE: (630) 424-5704  
COMPANY: COMMONWEALTH EDISON  
ACCOUNT NUMBER: ---

TS SHT NO. 11

DESIGNED - WBL	REVISED - <b>5/28/2024</b>
DRAWN - MMC	REVISED -
CHECKED - BKS	REVISED -
DATE - 12/26/2023	REVISED -



STATE OF ILLINOIS  
DEPARTMENT OF TRANSPORTATION

**TRAFFIC SIGNAL DESIGN DETAILS AND PLANS - OAK ST.**  
**IL ROUTE 176 (HICKORY DRIVE TO MISTWOOD LANE)**

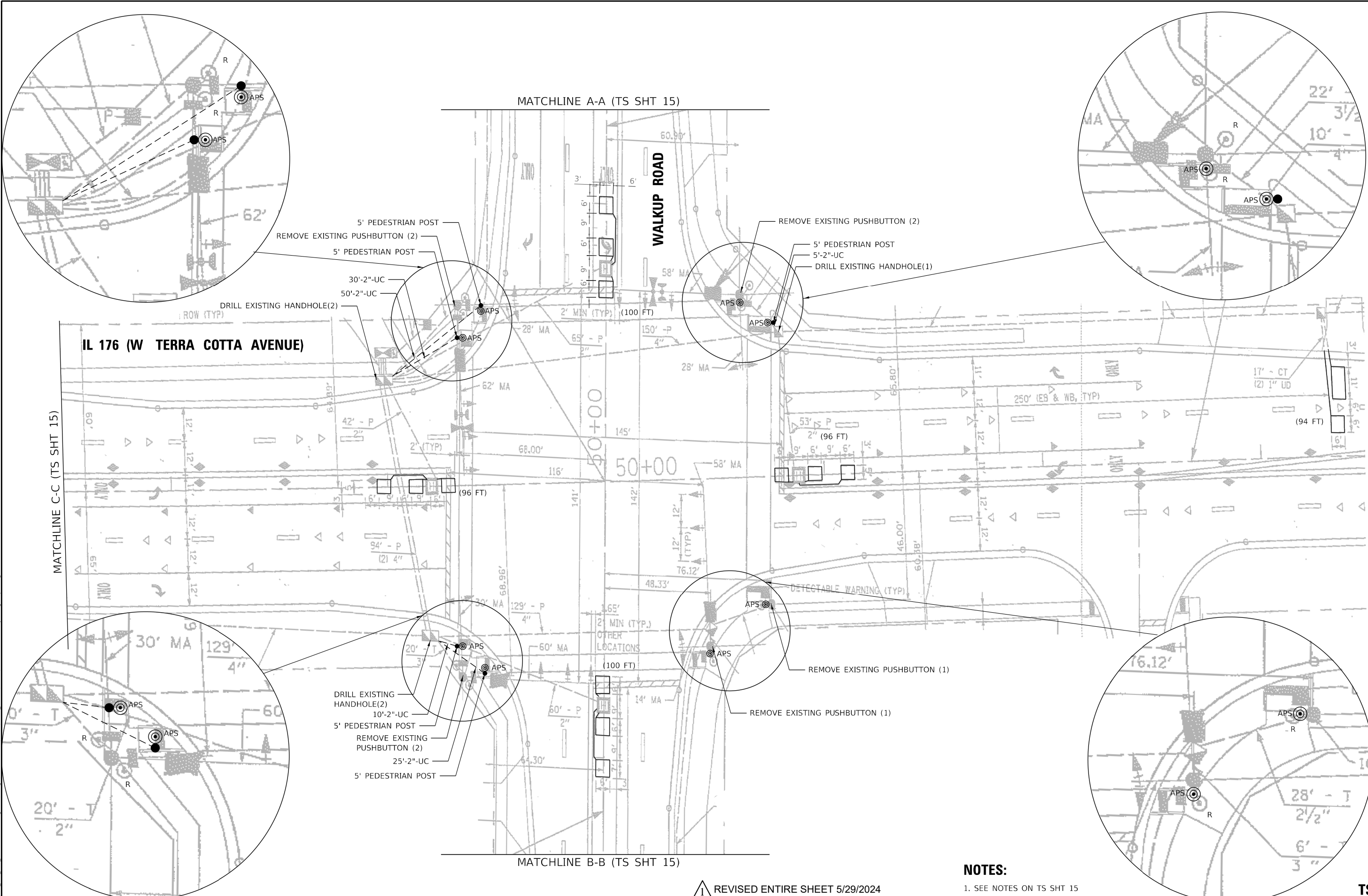
SCALE: SHEET OF SHEETS STA. TO STA.

**REVISION 1** REVISED ENTIRE SHEET 5/29/2024 **TS 11565**

F.A.P. RTE.	SECTION	COUNTY	TOTAL SHEETS	SHEET NO.
335	FAP 335 23 OVERLAY	MCHENRY	49	26

CONTRACT NO. 62V07

ILLINOIS FED. AID PROJECT



**NOTES:**

1. SEE NOTES ON TS SHT 15

⚠️ REVISED ENTIRE SHEET 5/29/2024

TS SHT NO. 14

USER: wilton  
 MODEL: Design  
 FILE: Model\_PLC\_134\_001\_DUZ\_IDOT\_Traffic\_Design\_PlanDetailWork\_Order\_21CADD\CADD\_Sheet\62V07\02-IL176WalkupRds-signal\_plans.dgn



PLOT DRIVER = SPLTRDVS	DESIGNED - WBL	REVISED - ⚠️ 5/28/2024
PEN TABLE = SPENBLS	DRAWN - MMC	REVISED -
PLOT SCALE = 40.0000' / in.	CHECKED - BKS	REVISED -
PLOT DATE = 5/22/2024 10:36:52 AM	DATE - 12/26/2023	REVISED -

STATE OF ILLINOIS  
 DEPARTMENT OF TRANSPORTATION

TRAFFIC SIGNAL DESIGN DETAILS AND PLANS - WALKUP AVE.  
 IL ROUTE 176 (HICKORY DRIVE TO MISTWOOD LANE)

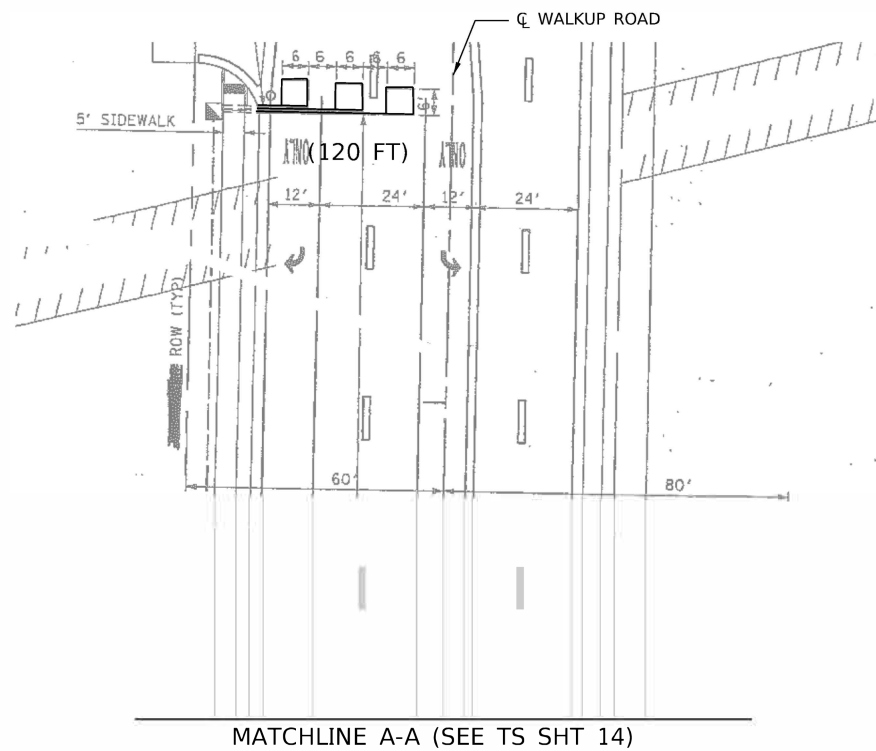
F.A.P. RTE. 335	SECTION FAP 335 23 OVERLAY	COUNTY MCHENRY	TOTAL SHEETS 49	SHEET NO. 27
ILLINOIS FED. AID PROJECT			CONTRACT NO. 62V07	

TS 11570

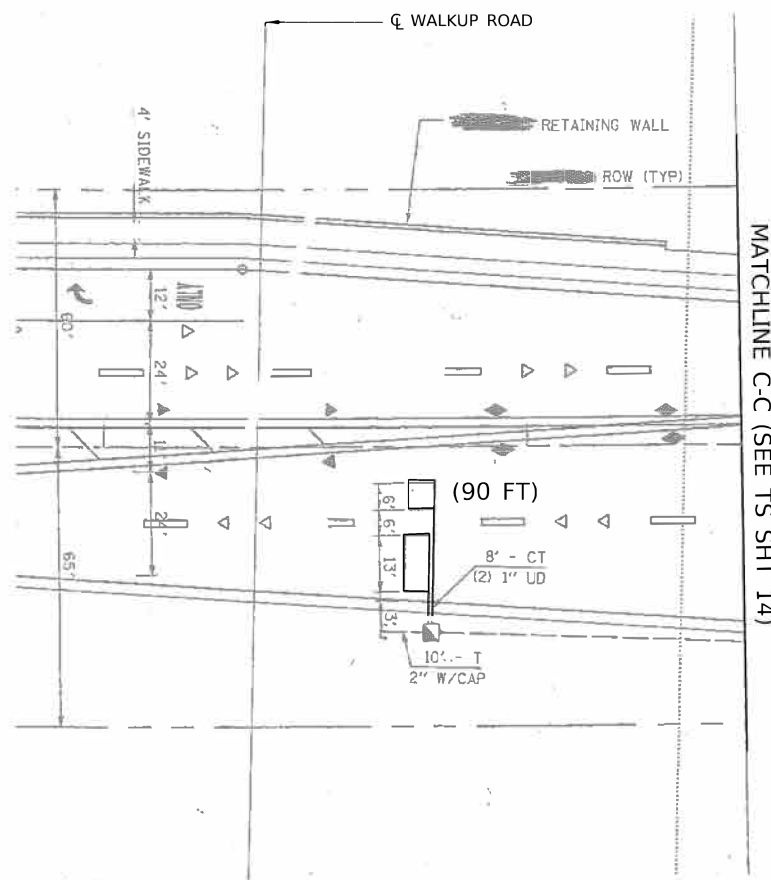


**NOTES:**

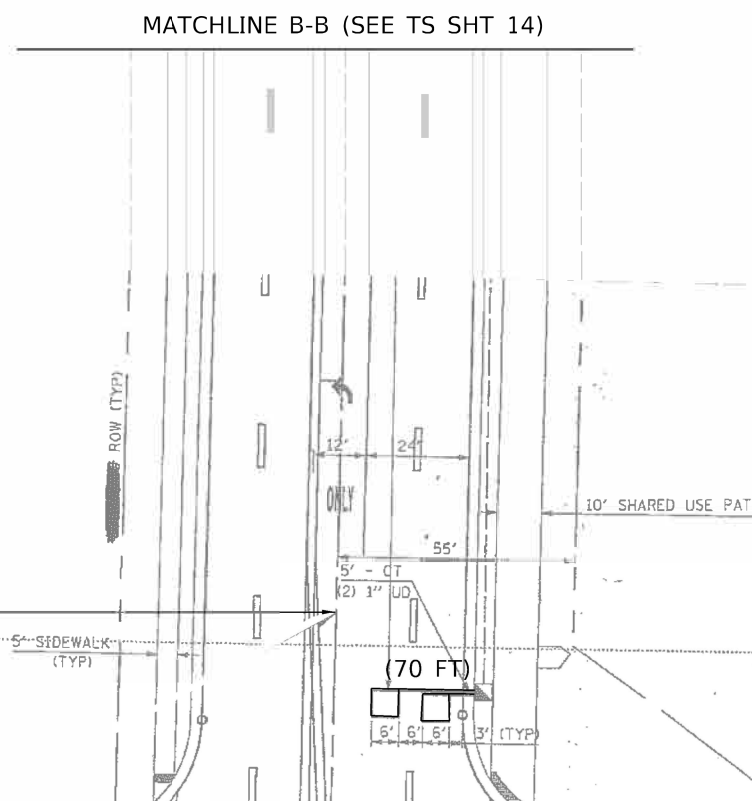
1. THE FOLLOWING ITEMS SHALL BE REMOVED BY THE CONTRACTOR AND SHALL BE DISPOSED OF BY THEM OUTSIDE THE RIGHT-OF-WAY AT THEIR EXPENSE. THE SALVAGE VALUE OF THE REMOVAL EQUIPMENT SHALL BE REFLECTED IN THE CONTRACT BID PRICE.
  - 8 EACH PEDESTRIAN PUSH-BUTTON
2. ALL EXISTING PEDESTRIAN PUSH-BUTTONS SHALL BE REMOVED.
3. CONTRACTOR SHALL PERFORM SIGNAL WORK IN SUCH A WAY AS TO MINIMIZE THE TIME THE EXISTING PEDESTRIAN EQUIPMENT IS INOPERATIONAL.
4. CONTRACTOR SHALL CONFIRM THE FINAL LOCATION OF THE PEDESTRIAN EQUIPMENT BEFORE INSTALLATION WITH THE TRAFFIC SIGNAL AREA ENGINEER BEFORE INSTALLATION.
5. DIMENSIONS SHOWN ARE FROM CENTER OF POST TO BACK OF CURB AND ARE APPROXIMATE AND PLACEMENT OF THE POST SHALL BE VERIFIED WITH THE ENGINEER PRIOR TO THE START OF WORK.
6. APS SHALL BE PLACED PARALLEL TO THE CORRESPONDING CROSS WALK.
7. STATIONING SHOWN ON THE TRAFFIC SIGNAL PLAN ARE FROM RECORD DRAWINGS AND MAY NOT MATCH OTHER PLANS.
8. WHERE TRAFFIC SIGNAL EQUIPMENT WAS REMOVED AND THE EXISTING CABLE IS NOT BEING REUSED, THE EXISTING ELECTRICAL CABLE SHALL BE REMOVED FROM CONDUIT.
9. THE CONTRACTOR SHALL UTILIZE THE EXISTING UNIDUCT FOR THE PROPOSED LOOP DETECTORS.
10. PUSH-BUTTON EXTENSIONS ARE REQUIRED WHERE PEDESTRIAN PUSH-BUTTON LOCATIONS/INSTALLATIONS DO NOT MEET THE REQUIREMENTS OF THE MUTCD OR THE INFORMATION FOUND IN THE "AMERICANS WITH DISABILITIES ACT ACCESSIBILITY GUIDELINES FOR BUILD AND FACILITIES". THE PUSH-BUTTON EXTENSIONS SHALL BE INCLUDED IN THE COST OF THE ACCESSIBLE PEDESTRIAN SIGNALS.
11. EACH DETECTOR LOOP SHALL HAVE ITS OWN 1" COILABLE NON-METALLIC CONDUIT BETWEEN THE EDGE OF PAVEMENT AND THE ADJACENT HANDHOLE AS SHOWN ON THE PLAN AND AS STATED IN THE TRAFFIC SIGNAL SPECIFICATIONS.
12. WORK SHALL MEET THE REQUIREMENTS OF THE SPECIAL PROVISIONS, DETECTOR LOOP REPLACEMENT AND/OR INSTALLATION (ROADWAY GRINDING, RESURFACING, AND PATCHING OPERATIONS).
13. THIS PLAN IS FOR THE REMOVAL OF PUSH BUTTONS, INSTALLATION OF APS PUSH BUTTONS, AND REPLACEMENT OF LOOP DETECTORS WITHIN THE RESURFACING LIMITS AS SHOWN.
14. ALL PUSH BUTTONS SHALL BE APS.



MATCHLINE A-A (SEE TS SHT 14)



MATCHLINE C-C (SEE TS SHT 14)



MATCHLINE B-B (SEE TS SHT 14)

TS SHT NO. 15

USER: wjcrion  
MODEL: Design  
FILE NAME: PLOT\_134\_001\_DUZ\_IDOT\_Traffic\_Design\_PlanDesignWork\_Order\_21CADD1CADD\_Sheets02V0702V07-41760WalkupRd-signal plans-2.dgn



PLOT DRIVER = \$PLTRVRS\$	DESIGNED = WBL	REVISED =  5/28/2024
PEN TABLE = \$PENTBLS\$	DRAWN = MMC	REVISED =
PLOT SCALE = 40.0000' / in.	CHECKED = BKS	REVISED =
PLOT DATE = 5/22/2024 10:37:18 AM	DATE = 12/26/2023	REVISED =

STATE OF ILLINOIS  
DEPARTMENT OF TRANSPORTATION

TRAFFIC SIGNAL DESIGN DETAILS AND PLANS - WALKUP AVE.  
IL ROUTE 176 (HICKORY DRIVE TO MISTWOOD LANE)

SCALE: SHEET OF SHEETS STA. TO STA.

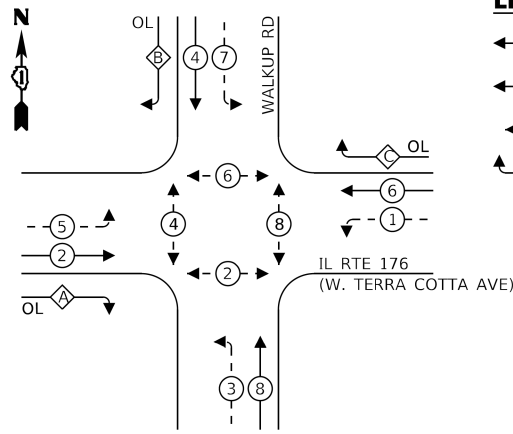
REVISED ENTIRE SHEET 5/29/2024

TS 11570

F.A.P. RTE.	SECTION	COUNTY	TOTAL SHEETS	SHEET NO.
335	FAP 335 23 OVERLAY	MCHENRY	49	28
			CONTRACT NO. 62V07	
ILLINOIS FED. AID PROJECT				



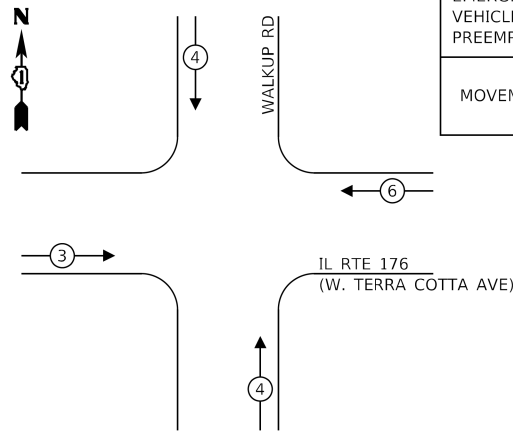
**EXISTING CONTROLLER SEQUENCE**



**LEGEND:**

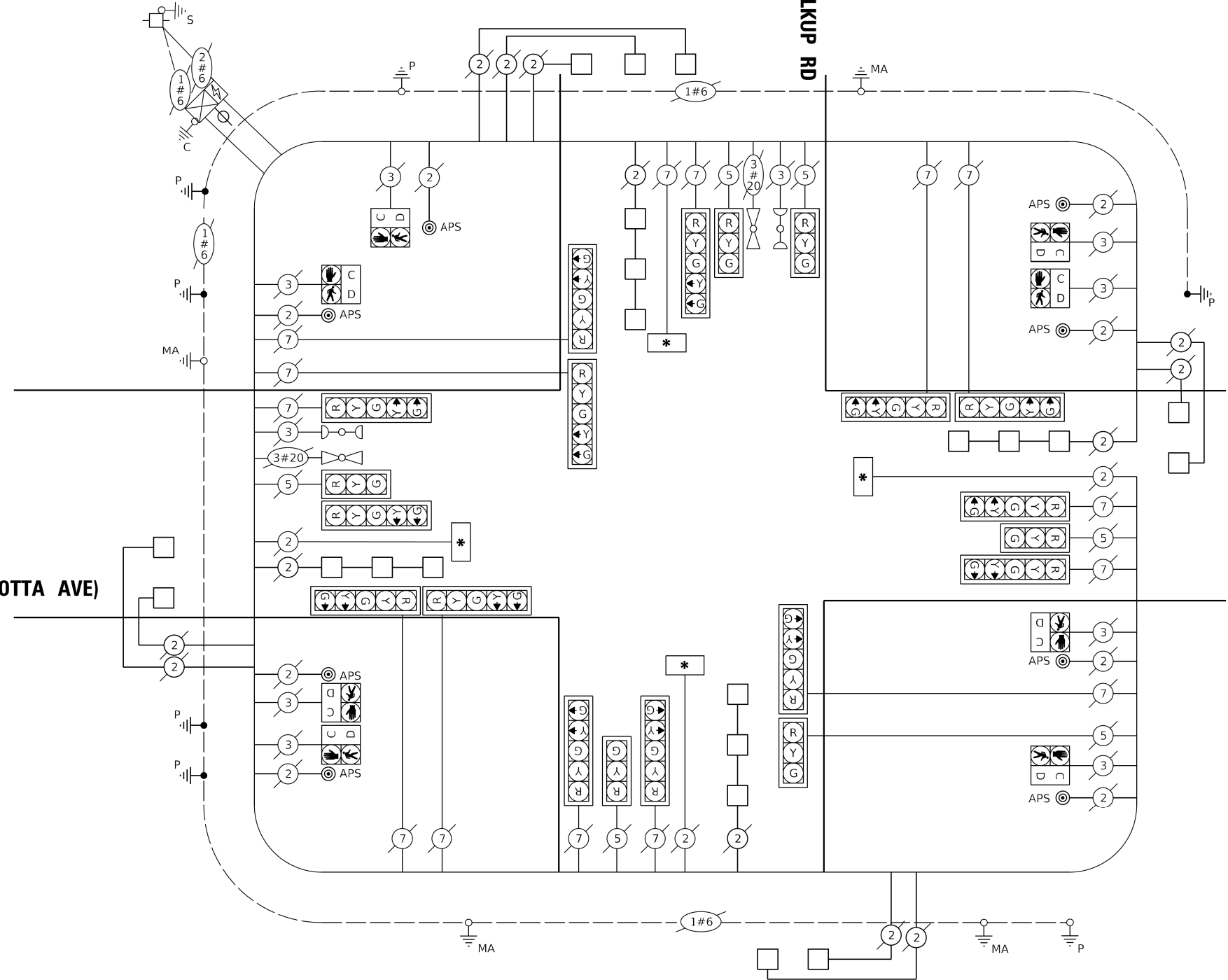
- ← \* → PROTECTED PHASE
- ← \* - - → PROTECTED/PERMITTED PHASE
- ← \* → PEDESTRIAN PHASE
- ← \* OL → OVERLAP

**EXISTING EMERGENCY VEHICLE PREEMPTION SEQUENCE**



EMERGENCY VEHICLE PREEMPTORS		
EMERGENCY VEHICLE PREEMPTOR	3	4
MOVEMENT	← →	↑ ↓

IL RTE 176 (TERRA COTTA AVE)



**TRAFFIC SIGNAL ELECTRICAL SERVICE REQUIREMENTS**

TYPE	NO. OF LAMPS	LED WATTAGE	% OPERATION	TOTAL WATTAGE
SIGNAL (RED)	20	11	50	110
(YELLOW)	20	20	5	20
(GREEN)	20	12	45	12
PERMISSIVE ARROW	26	10	10	28
PED. SIGNAL	8	20	100	160
CONTROLLER	1	100	100	100
UPS	1	25	100	25
VIDEO SYSTEM	-	150	100	-
BLANK-OUT SIGN	-	25	5	-
FLASHER	-	-	50	-
STREET NAME SIGN	4	120	50	240
LUMINAIRE	-	-	-	-
TOTAL =				695

**SCHEDULE OF QUANTITIES**

ITEM DESCRIPTION	UNIT	TOTAL QTY
UNDERGROUND CONDUIT, GALVANIZED STEEL, 2" DIA.	FOOT	120
MAINTENANCE OF EXISTING TRAFFIC SIGNAL INSTALLATION	EACH	1
REMOVE AND REINSTALL ELECTRIC CABLE FROM CONDUIT	FOOT	165
DRILL EXISTING HANDHOLE	EACH	5
DETECTOR LOOP, TYPE 1	FOOT	766
MODIFY EXISTING CONTROLLER CABINET	EACH	1
REMOVE EXISTING TRAFFIC SIGNAL EQUIPMENT	EACH	1
PEDESTRIAN SIGNAL POST, 5 FT.	EACH	5
ACCESSIBLE PEDESTRIAN SIGNALS	EACH	8
CONCRETE FOUNDATION, TYPE A 12-INCH DIAMETER	FOOT	20
RE-OPTIMIZE TRAFFIC SIGNAL SYSTEM LEVEL 1	EACH	1

**CABLE PLAN**  
(NOT TO SCALE)

**LEGEND**

- \* ILLUMINATED STREET NAME SIGN

ENERGY COSTS TO:

CITY OF CRYSTAL LAKE  
100 W WOODSTOCK STREET  
CRYSTAL LAKE, IL 60014

ENERGY SUPPLY: CONTACT: JOE STACHO  
PHONE: (630) 424-5704  
COMPANY: COMMONWEALTH EDISON  
ACCOUNT NUMBER: ---



PLOT DRIVER = SPLTRVSS	DESIGNED - WBL	REVISED - 5/28/2024
PEN TABLE = SPENBLS5	DRAWN - MMC	REVISED -
PLOT SCALE = 40.0000" / in.	CHECKED - BKS	REVISED -
PLOT DATE = 5/22/2024 10:37:31 AM	DATE - 12/26/2023	REVISED -

STATE OF ILLINOIS  
DEPARTMENT OF TRANSPORTATION

TRAFFIC SIGNAL DESIGN DETAILS AND PLANS - WALKUP AVE.  
IL ROUTE 176 (HICKORY DRIVE TO MISTWOOD LANE)

SCALE: SHEET OF SHEETS STA. TO STA.

REVISED ENTIRE SHEET 5/29/2024

TS 11570

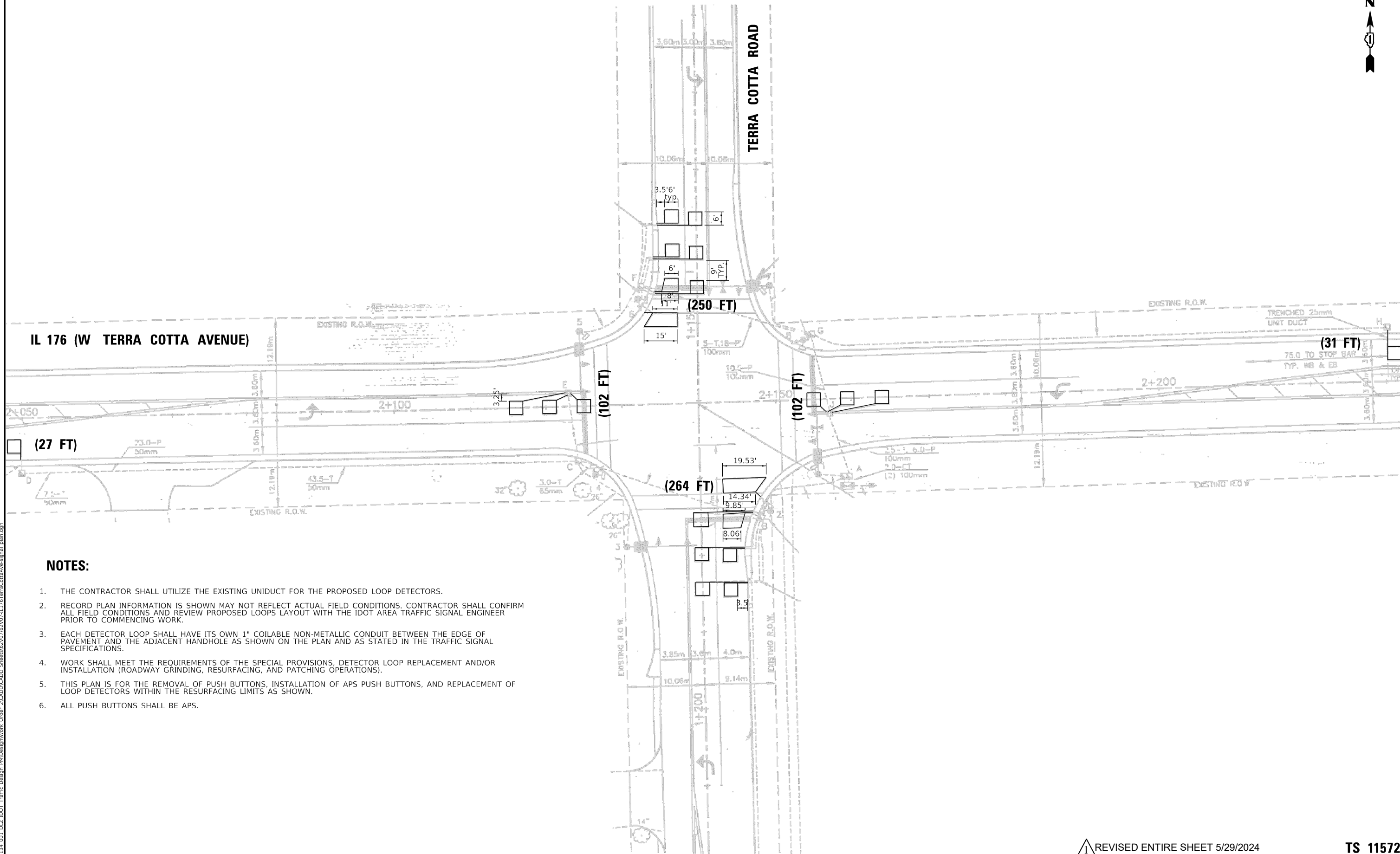
F.A.P. RTE.	SECTION	COUNTY	TOTAL SHEETS	SHEET NO.
335	FAP 335 23 OVERLAY	MCHENRY	49	29
			CONTRACT NO. 62V07	

ILLINOIS FED. AID PROJECT

TS SHT NO. 16

USER: wldrton  
MODEL: Design  
FILE: 134\_001\_DUZ\_IDOT\_Traffic\_Design\_PRRDesignWork\_Order\_21CADD\CADD\_Sheet0762V07-IL176WalkupRd-cable\_alan.dgn





**NOTES:**

1. THE CONTRACTOR SHALL UTILIZE THE EXISTING UNIDUCT FOR THE PROPOSED LOOP DETECTORS.
2. RECORD PLAN INFORMATION IS SHOWN NOT REFLECT ACTUAL FIELD CONDITIONS. CONTRACTOR SHALL CONFIRM ALL FIELD CONDITIONS AND REVIEW PROPOSED LAYOUT WITH THE IDOT AREA TRAFFIC SIGNAL ENGINEER PRIOR TO COMMENCING WORK.
3. EACH DETECTOR LOOP SHALL HAVE ITS OWN 1" COILABLE NON-METALLIC CONDUIT BETWEEN THE EDGE OF PAVEMENT AND THE ADJACENT HANDHOLE AS SHOWN ON THE PLAN AND AS STATED IN THE TRAFFIC SIGNAL SPECIFICATIONS.
4. WORK SHALL MEET THE REQUIREMENTS OF THE SPECIAL PROVISIONS, DETECTOR LOOP REPLACEMENT AND/OR INSTALLATION (ROADWAY GRINDING, RESURFACING, AND PATCHING OPERATIONS).
5. THIS PLAN IS FOR THE REMOVAL OF PUSH BUTTONS, INSTALLATION OF APS PUSH BUTTONS, AND REPLACEMENT OF LOOP DETECTORS WITHIN THE RESURFACING LIMITS AS SHOWN.
6. ALL PUSH BUTTONS SHALL BE APS.

TS SHT NO. 12

USER: wilton  
 MODEL: Design  
 FILE: 11572\_134\_001\_DUZ\_IDOT\_Traffic\_Design\_PlanDesignWork\_Order\_21CADD\CADD\_Sheet\11572\_134\_001\_IL176TerraCottaAveSignal\_Plan.dgn



PLOT DRIVER = SPLTRVSS	DESIGNED - WBL	REVISED -  5/28/2024
PEN TABLE = SPENBLS5	DRAWN - MMC	REVISED -
PLOT SCALE = 40.0000 "/>		

STATE OF ILLINOIS  
 DEPARTMENT OF TRANSPORTATION

TRAFFIC SIGNAL DESIGN DETAILS AND PLANS - TERRA COTTA RD.  
 IL ROUTE 176 (HICKORY DRIVE TO MISTWOOD LANE)

SCALE: SHEET OF SHEETS STA. TO STA.

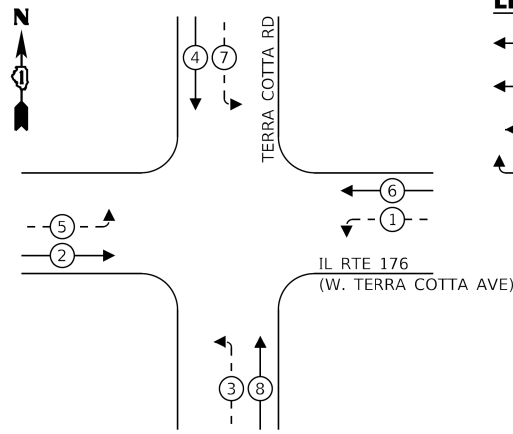
REVISED ENTIRE SHEET 5/29/2024

TS 11572

F.A.P. RTE.	SECTION	COUNTY	TOTAL SHEETS	SHEET NO.
335	FAP 335 23 OVERLAY	MCHENRY	49	30
CONTRACT NO. 62V07				
ILLINOIS FED. AID PROJECT				



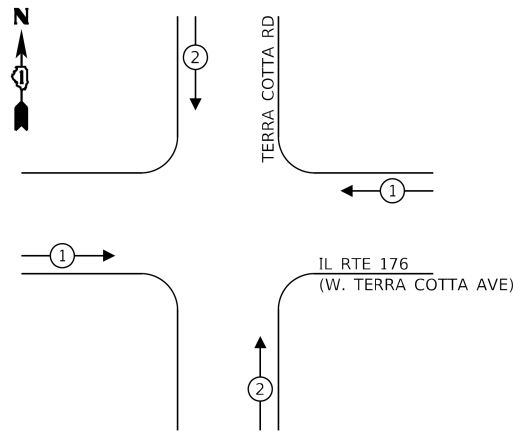
### EXISTING CONTROLLER SEQUENCE



### LEGEND:

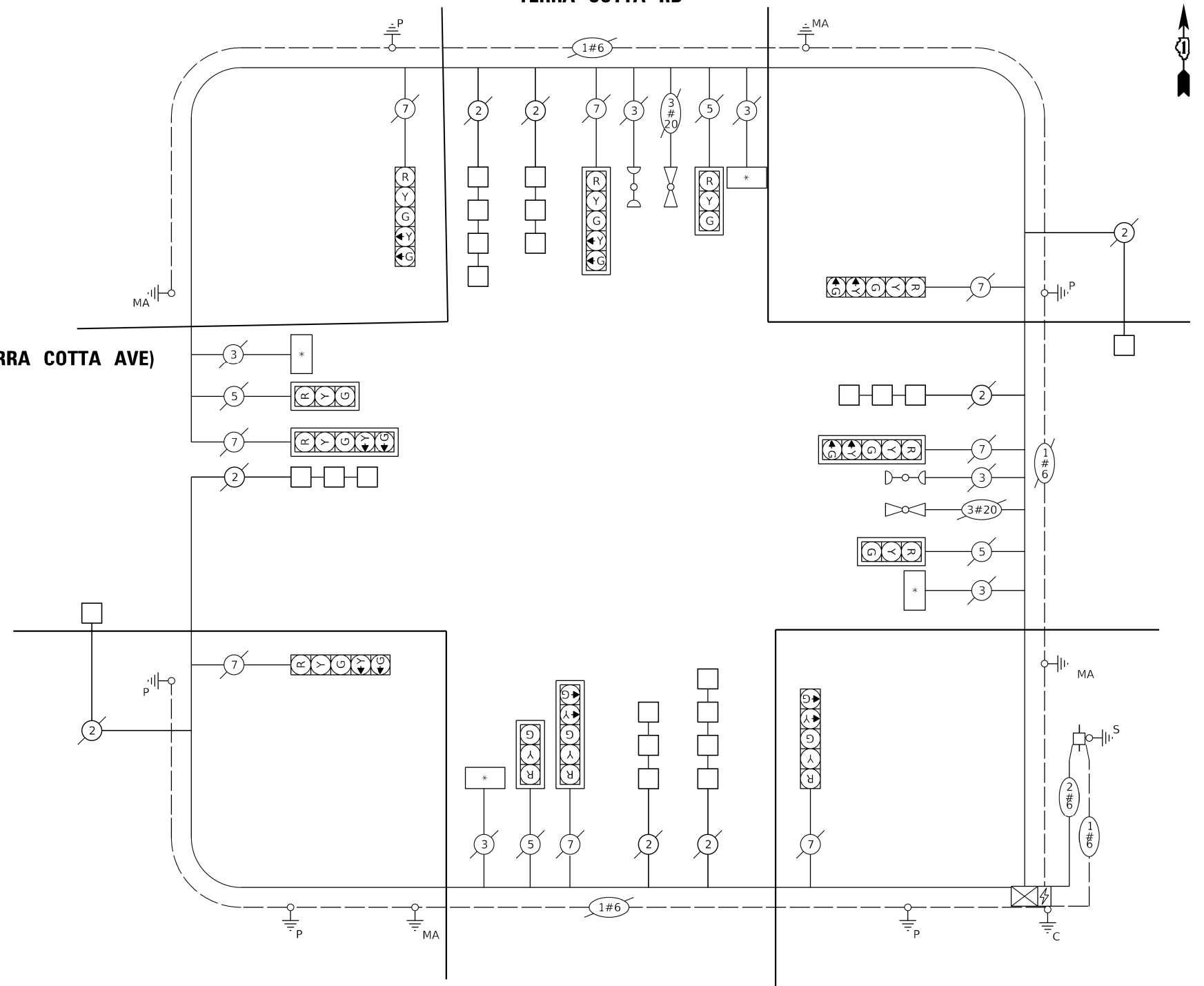
- ← \* → PROTECTED PHASE
- ← \* - - PROTECTED/PERMITTED PHASE
- ← \* → PEDESTRIAN PHASE
- OL OVERLAP

### EXISTING EMERGENCY VEHICLE PREEMPTION SEQUENCE



### IL RTE 176 (TERRA COTTA AVE)

### TERRA COTTA RD



### CABLE PLAN (NOT TO SCALE)

### LEGEND

- \* ILLUMINATED STREET SIGN

### TRAFFIC SIGNAL ELECTRICAL SERVICE REQUIREMENTS

TYPE	NO. OF LAMPS	LED WATTAGE	% OPERATION	TOTAL WATTAGE
SIGNAL (RED)	12	11	50	66
(YELLOW)	12	20	5	12
(GREEN)	12	12	45	64.8
PERMISSIVE ARROW	16	10	10	16
PED. SIGNAL	-	20	100	-
CONTROLLER	1	100	100	100
UPS	1	25	100	25
VIDEO SYSTEM	-	150	100	-
BLANK-OUT SIGN	-	25	5	-
FLASHER	-	-	50	-
STREET NAME SIGN	4	120	50	240
LUMINAIRE	-	-	-	-
TOTAL =				523.5

ENERGY COSTS TO:

CITY OF CRYSTAL LAKE  
100 W WOODSTOCK STREET  
CRYSTAL LAKE, IL 60014

ENERGY SUPPLY: CONTACT: JOE STACHO  
PHONE: (630) 424-5704  
COMPANY: COMMONWEALTH EDISON  
ACCOUNT NUMBER: ---

### SCHEDULE OF QUANTITIES

ITEM DESCRIPTION	UNIT	TOTAL QTY
DETECTOR LOOP REPLACEMENT	FOOT	776

STATE OF ILLINOIS  
DEPARTMENT OF TRANSPORTATION

TRAFFIC SIGNAL DESIGN DETAILS AND PLANS - TERRA COTTA RD.  
IL ROUTE 176 (HICKORY DRIVE TO MISTWOOD LANE)

SCALE: SHEET OF SHEETS STA. TO STA.

REVISED ENTIRE SHEET 5/29/2024

TS 11572

TS SHT NO. 13

USER: wldrton  
MODEL: Design  
FILE NUMBER: P134\_001\_DUZ\_IDOT\_Traffic\_Design\_PRRDesignWork\_Order\_21CADD/CADD\_Sheet07070707-IL176TerraCottaAve-cable\_pln.dgn



PLOT DRIVER =	spltdrvss	DESIGNED -	WBL	REVISED -	5/28/2024
PEN TABLE =	SPENBLS5	DRAWN -	MMC	REVISED -	
PLOT SCALE =	40.0000" / in.	CHECKED -	BKS	REVISED -	
PLOT DATE =	5/22/2024 10:36:46 AM	DATE -	12/26/2023	REVISED -	

F.A.P. RTE.	SECTION	COUNTY	TOTAL SHEETS	SHEET NO.
335	FAP 335 23 OVERLAY	MCHENRY	49	31

CONTRACT NO. 62V07

ILLINOIS FED. AID PROJECT