

GENERAL NOTES

THE FOLLOWING LISTED UTILITIES LOCATED WITHIN THE PROJECT LIMITS OR IMMEDIATELY ADJACENT TO THE PROJECT CONSTRUCTION LIMITS ARE MEMBERS OF JULIE:

CARL DONAHUE	ATT COMMUNICATIONS	TELEPHONE	630-552-4677
MICHAEL NORRIS	BUCKEYE PARTNERS, LP	PETROLEUM	219-313-5321
VINCENT MAZZAFERRO	COMED	ELECTRIC	779-231-1027
JASON KLEIN	FRONTIER	TELEPHONE	309-853-6297
HECTOR GARCIA	ATT	TELEPHONE	630-573-5465
CHIP PARROT	NICOR GAS CO.	GAS	630-388-3019
KYLE GRUHN	FOUR RIVERS SANITATION	SEWER	815-387-7400
TOM YUCCAS	COMCAST CABLE	CATV	815-509-8653
DEVEN BARNHILL	WINDSTREAM	TELEPHONE	815-592-3395
STEVE STRASSER	V. CHERRY VALLEY	WATER & SEWER	815-332-3441
DAN GALOVICH	ALDRIDGE ELECTRIC	COMMUNICATIONS	815-467-0428
MARK THOMPSON	NATURAL GAS PIPELINE	PIPELINE	
LANCE SANDY	iFIBER	FIBER	815-753-5798
BOB SULLIVAN	G4S	COMMUNICATIONS	630-272-9245

IDOT IS NOT A MEMBER OF JULIE. IF YOU ARE NEAR ANY OVERHEAD LIGHTING, INTERSECTION LIGHTING OR TRAFFIC SIGNALS, CONTACT THE IDOT TRAFFIC OFFICE AT 815-284-5469 AT LEAST 48 HOURS PRIOR TO WORK.

THE CONTRACTOR SHALL TAKE PRECAUTIONS TO MINIMIZE INCIDENTAL EXCAVATION OF EARTH DURING TREE REMOVALS. ANY INCIDENTAL EARTH REMOVED DURING TREE REMOVAL SHALL REMAIN ON SITE, AND BE UTILIZED TO FILL THE EXISTING VOID LEFT BY THE TREE REMOVAL.

PER SPECIAL PROVISION FOR COMPLETION DATE PLUS WORKING DAYS, ALL TREES SHALL BE FELLED AND REMOVED BETWEEN THE DATES OF OCTOBER 1, 2024 AND OCTOBER 15, 2024 EXCLUSIVELY.

FOR TREE TRUNK DIAMETERS MARKED AS "UNK", DIAMETER WAS UNKNOWN. ASSUMED 10 UNIT DIAMETER FOR QUANTITY CALCULATIONS.

CONTRACT 64B13 AND 64R71 WILL BE ACTIVE CONSTRUCTION PROJECTS. TOPOGRAPHIC CONDITIONS MAY VARY FROM THE PLANS.

CONTRACTOR SHALL BE FAMILIAR WITH THE LOCAL JURISDICTION NOISE ORDINANCES, AND PERFORM THE TREE REMOVAL WORK WITHIN THE RESTRICTIONS OF THE LOCAL NOISE ORDINANCES. CONTRACTOR SHALL BE RESPONSIBLE FOR OBTAINING ANY PERMIT OR PERMISSION FROM THE LOCAL JURISDICTIONS TO PERFORM ANY TREE REMOVAL WORK OUTSIDE THE RESTRICTIONS OF THE LOCAL NOISE ORDINANCES.

FOR ANY TREE REMOVALS THAT ABUT NON PUBLIC RIGHT-OF-WAY, THE CONTRACTOR SHALL CLEARLY STAKE AND DELINEATE THE EXISTING (AND ALL ACCESSIBLE) RIGHTS-OF-WAY NO LATER THAN 2 WEEKS PRIOR TO THE START OF ANY TREE REMOVALS. RIGHT-OF-WAY PLATS WILL BE SUPPLIED BY THE ENGINEER UPON REQUEST.

NO LATER THAN 2 WEEKS PRIOR TO START OF ANY TREE REMOVALS, THE CONTRACTOR SHALL REQUEST ENGINEER REVIEW AND APPROVAL OF THE STAKED AND DELINEATED RIGHT-OF-WAY LOCATIONS. TREE REMOVAL WILL NOT BE ALLOWED WITHOUT THE APPROVAL OF THE ENGINEER.

COMMITMENTS

TREES THREE (3) INCHES OR GREATER IN DIAMETER AT BREAST HEIGHT WILL BE CLEARED FROM OCTOBER 1ST THROUGH OCTOBER 15TH. THE US FISH AND WILDLIFE SERVICE CONCURRED WITH OUR DETERMINATION AND DATE RESTRICTION ON TREE CLEARING ON 3/21/2023.

RUSTY PATCHED BUMBLE BEE: THE PROJECT SPONSOR WILL BEGIN MOWING AND CONTINUE TO MOW WITHIN THE LIMITS OF THE PROPOSED IMPROVEMENT FROM MARCH 15 - OCTOBER 15. THE MOWING SHOULD BE KEPT AT A HEIGHT OF 6". THIS COMMITMENT WILL BE ADHERED TO UNTIL THE END OF CONSTRUCTION. TREE REMOVAL WILL ONLY OCCUR FROM OCTOBER 1 - OCTOBER 15TH OF ANY GIVEN YEAR TO PROTECT THE QUEENS BEFORE THEY RETURN TO THEIR OVER-WINDERING BURROWS.

CLASS 4A AND 5 SEED SHALL BE USED ON ALL BACK SLOPE AND FORE SLOPES ON THE PROJECT. PLEASE REFER TO SPECIAL PROVISION FOR ADDITIONAL INFORMATION AND FOLLOW THE SPECS IN SECTION 250 OF THE MANUAL FOR ANY TEMPORARY DISTURBANCE WITHIN THE PROJECT LIMITS.

EXISTING RIGHT-OF-WAY AND LAND ACQUISITION NOTES

IT IS CRITICAL THAT THE CONTRACTOR IS AWARE THAT THE PROPOSED RIGHT-OF-WAY (ROW) LINEWORK AS DEPICTED IN THE 64S92 CONTRACT PLANS ARE NOT ALL ACQUIRED AS OF THE DATE OF CONTRACT LETTING.

ONLY THE ACCESSIBLE TREE REMOVALS WITHIN THE EXISTING PUBLIC RIGHT-OF-WAY, OR WITHIN THE FULLY ACQUIRED PARCELS (AS OF THE DATE OF CONTRACT LETTING) ARE QUANTIFIED FOR REMOVAL IN THIS CONTRACT 64S92 (SUMMARY OF QUANTITIES).

THE CHART BELOW IDENTIFIES THE STATUS OF ANY NON-PUBLIC RIGHT-OF-WAY ACQUISITION AS OF THE DATE OF CONTRACT LETTING.

THE CONTRACTOR SHALL BE AWARE THAT ADDITIONAL TREE REMOVALS WITHIN NON ACQUIRED PARCELS MAY BE REQUESTED BY THE ENGINEER IF THE PARCEL(S) IS ACQUIRED PRIOR TO THE OCTOBER 1, 2024 START OF TREE REMOVAL. ANY TREE REMOVALS ADDED TO THE SCOPE OF 64S92 WOULD BE BOUND BY THE SAME TREE REMOVAL RESTRICTIONS AND GUIDELINES WITHIN THESE 64S92 CONTRACT PLANS AND SPECIAL PROVISIONS, INCLUDING THE OCTOBER 1, 2024 TO OCTOBER 15, 2024 TREE REMOVAL WINDOW.

		Status of ROW Acquisition	TREE REMOVAL Included In 64S92?	Potential Additional Tree Removal That May Be Added to Contract Prior to October 1, 2024 (Coordinate with Engineer)
21507001	D.M. Clark Companies	NOT Acquired	NO	Potential To 0.05 Acres
21507002	Joseph & Barbara Witte	NOT Acquired	NO	Potential To Add 0.17 Acres
21507003	Maplehurst Farms	NOT Acquired	NO	Potential To Add 0.05 Acres
21507004	Chicago Central & Pacific RR	Coordinate with RR Directly	YES	-
21507005	Michael & Dawn Karceski	YES - Acquired	YES	-
21507006	McElmeel Trust	NOT Acquired	NO	Potential To Add 0.42 Acres
21507007	Darl- Ripple of Belvidere	NOT Acquired	NO	Potential To Add 0.10 Acres
21507008	Union Pacific RR	Coordinate with RR Directly	YES	-
21507009	Swanson Farms Inc	NOT Acquired	NO	Potential To Add 62 Units and 0.025 Acres
21507010	Aaron & Tonia Howard	YES - Acquired	N/A - NO TREES IN PARCEL	-
21507011	Village of Cherry Valley	NOT Acquired	NO	Potential To Add 0.01 Acres
21507012	Cherry Valley Storage 17	NOT Acquired	N/A - NO TREES IN PARCEL	-

MODEL: General Notes (Sheet)
FILE NAME: c:\pwworkdir\benesch_projects\projects\0193076\0264S92-TREE-shh-GeneralNotes.dgn

USER NAME = esayre	DESIGNED - A.GIBSON	REVISED - 05/31/2024
	DRAWN - J. WORTHINGTON	REVISED -
PLOT SCALE = \$\$CALE\$	CHECKED - J. TARDY	REVISED -
PLOT DATE = 5/29/2024	DATE - 3/22/2024	REVISED -

**STATE OF ILLINOIS
DEPARTMENT OF TRANSPORTATION**

GENERAL NOTES

SCALE: SHEET 2 OF 2 SHEETS STA. TO STA.

F.A.I. RTE.	SECTION	COUNTY	TOTAL SHEETS	SHEET NO.
*	((201-3) (4-1.5))TR	WINNEBAGO	23	3
CONTRACT NO. 64S92				
ILLINOIS			FED. AID PROJECT	

*FAI ROUTE 39 (I-39) & FAP 301 (US 20) *

MODEL: SOQ (Sheet)
 FILE NAME: c:\pwworkdir\benesch_projects\projects\0193076\0264S92\FEE-sh-SOQ.dgn



USER NAME = jworthngton	DESIGNED - A.GIBSON	REVISED -
	DRAWN - J. WORTHINGTON	REVISED -
PLOT SCALE = \$\$SCALE\$	CHECKED - J. TARDY	REVISED -
PLOT DATE = 3/20/2024	DATE - 3/22/2024	REVISED -

**STATE OF ILLINOIS
 DEPARTMENT OF TRANSPORTATION**

SUMMARY OF QUANTITIES

SCALE: 1"=1'-0" SHEET 1 OF 1 SHEETS STA. TO STA.

F.A.I RTE.	SECTION	COUNTY	TOTAL SHEETS	SHEET NO.
*	((201-3) (4-1,5))TR	WINNEBAGO	23	4
CONTRACT NO. 64S92				
ILLINOIS FED. AID PROJECT				

*FAI ROUTE 39 (I-39) & FAP 301 (US 20)

1 REV. 6/4/24 REV. 4/9/24

CODE NO.	ITEM DESCRIPTION	UNIT	TOTAL QUANTITY	0031
				100% STATE
20100110	TREE REMOVAL (6 TO 15 UNITS DIAMETER)	UNIT	1,609	1,609
20100210	TREE REMOVAL (OVER 15 UNITS DIAMETER)	UNIT	734	734
20100500	TREE REMOVAL, ACRES	ACRE	13.00	13.00
25000312	SEEDING, CLASS 4A	ACRE	0.50	0.50
25000320	SEEDING, CLASS 5	ACRE	0.50	0.50
25000750	MOWING	ACRE	34.00	34.00
25100125	MULCH, METHOD 3	ACRE	0.50	0.50
28000400	PERIMETER EROSION BARRIER	FOOT	748	748
67100100	MOBILIZATION	L SUM	1	1
70100450	TRAFFIC CONTROL AND PROTECTION, STANDARD 701201	L SUM	1	1
70100825	TRAFFIC CONTROL AND PROTECTION, STANDARD 701456	L SUM	1	1
Z0048665	RAILROAD PROTECTIVE LIABILITY INSURANCE	L SUM	1	1
Z0013798	CONSTRUCTION LAYOUT	L SUM	1	1
X6640108	FENCE REMOVAL AND REINSTALLATION	FOOT	93	93

20100110						
TREE REMOVAL (6 TO 15 UNITS DIAMETER)						
ROAD	STA	OFFSET	LT/RT	ID	UNIT	REMARKS
PR I-39	2656+33.78	91.15	LT	SB I-39	10	
PR I-39	2662+53.53	112.92	LT	SB I-39	14	
PR I-39	2663+58.03	122.98	LT	SB I-39	14	
PR I-39	2678+08.37	112.14	LT	SB I-39	14	
PR I-39	2685+82.70	133.15	LT	SB I-39	10	
PR I-39	2685+82.70	133.15	LT	SB I-39	10	
PR I-39	2685+82.70	133.15	LT	SB I-39	10	
PR I-39	2689+89.38	102.14	LT	SB I-39	9	
PR I-39	2689+89.53	101.42	LT	SB I-39	9	
PR I-39	2689+90.15	101.98	LT	SB I-39	9	
PR I-39	2690+32.07	101.88	LT	SB I-39	8	
PR I-39	2690+32.47	100.78	LT	SB I-39	8	
PR I-39	2690+32.99	101.38	LT	SB I-39	8	
PR I-39	2691+24.76	82.05	LT	SB I-39	11	
PR I-39	2691+68.25	95.60	LT	SB I-39	9	
PR I-39	2692+18.48	83.62	LT	SB I-39	14	
PR I-39	2692+86.32	92.09	LT	SB I-39	10	
PR I-39	2693+30.52	105.39	LT	SB I-39	8	
PR I-39	2693+30.52	105.39	LT	SB I-39	8	
PR I-39	2693+30.52	105.39	LT	SB I-39	8	
PR I-39	2693+30.52	105.39	LT	SB I-39	8	
PR I-39	2693+30.52	105.39	LT	SB I-39	8	
PR I-39	2693+30.52	105.39	LT	SB I-39	8	
PR I-39	2693+30.52	105.39	LT	SB I-39	8	
PR I-39	2693+30.52	105.39	LT	SB I-39	8	
PR I-39	2693+30.52	105.39	LT	SB I-39	8	
PR I-39	2693+71.69	115.62	LT	SB I-39	12	
PR I-39	2694+04.47	120.05	LT	SB I-39	10	
PR I-39	2694+29.70	116.61	LT	SB I-39	6	
PR I-39	2694+60.19	79.73	LT	SB I-39	10	
PR I-39	2695+15.16	99.92	LT	SB I-39	13	
PR I-39	2695+47.98	81.88	LT	SB I-39	11	
PR I-39	2695+74.87	100.03	LT	SB I-39	9	
PR I-39	2696+22.34	108.31	LT	SB I-39	12	
PR I-39	2696+49.18	86.31	LT	SB I-39	12	
PR I-39	2696+76.71	100.10	LT	SB I-39	12	
PR I-39	2697+11.56	83.93	LT	SB I-39	10	
PR I-39	2697+76.56	94.69	LT	SB I-39	12	
PR I-39	2698+55.94	108.76	LT	SB I-39	12	
PR I-39	2699+01.61	84.16	LT	SB I-39	12	
PR I-39	2700+06.06	129.30	LT	SB I-39	8	
PR I-39	2700+06.24	127.63	LT	SB I-39	14	
PR I-39	2700+07.70	125.66	LT	SB I-39	8	
PR I-39	2700+78.21	97.58	LT	SB I-39	12	
PR I-39	2701+02.96	135.34	LT	SB I-39	14	
SUBTOTAL					414	

20100110						
TREE REMOVAL (6 TO 15 UNITS DIAMETER)						
ROAD	STA	OFFSET	LT/RT	ID	UNIT	REMARKS
PR I-39	2701+27.64	99.79	LT	SB I-39	14	
PR I-39	2701+62.93	96.38	LT	SB I-39	12	
PR I-39	2702+70.30	139.25	LT	SB I-39	0	
PR I-39	2703+97.72	90.27	LT	SB I-39	6	
PR I-39	2703+98.20	90.07	LT	SB I-39	6	
PR I-39	2704+44.44	143.95	LT	SB I-39	10	
PR I-39	2641+80.59	141.02	RT	I-39 NB	6	
PR I-39	2641+82.71	141.10	RT	I-39 NB	9	
PR I-39	2641+88.95	135.73	RT	I-39 NB	10	
PR I-39	2652+71.17	114.09	RT	I-39 NB	6	
PR I-39	2653+20.31	154.03	RT	I-39 NB	10	
PR I-39	2653+25.13	155.37	RT	I-39 NB	10	
PR I-39	2653+36.35	156.25	RT	I-39 NB	10	
PR I-39	2653+45.39	157.10	RT	I-39 NB	10	
PR I-39	2654+59.12	144.88	RT	I-39 NB	10	
PR I-39	2654+72.41	131.69	RT	I-39 NB	10	
PR I-39	2656+04.61	133.31	RT	I-39 NB	8	
PR I-39	2656+13.62	132.12	RT	I-39 NB	11	
PR I-39	2656+59.21	126.02	RT	I-39 NB	6	
PR I-39	2667+68.40	122.35	RT	I-39 NB	10	
PR I-39	2668+14.79	117.30	RT	I-39 NB	10	
PR I-39	2668+73.08	123.89	RT	I-39 NB	10	
PR I-39	2669+26.11	126.30	RT	I-39 NB	10	
PR I-39	2669+72.79	128.01	RT	I-39 NB	10	
PR I-39	2670+17.80	131.51	RT	I-39 NB	6	
PR I-39	2670+25.51	131.55	RT	I-39 NB	13	
PR I-39	2670+32.62	131.58	RT	I-39 NB	6	
PR I-39	2670+53.58	129.93	RT	I-39 NB	11	
PR I-39	2671+17.34	132.69	RT	I-39 NB	11	
PR I-39	2671+63.95	139.91	RT	I-39 NB	9	
PR I-39	2671+70.65	139.82	RT	I-39 NB	6	
PR I-39	2673+65.50	122.24	RT	I-39 NB	14	
PR I-39	2673+68.49	134.53	RT	I-39 NB	10	
PR I-39	2674+05.76	128.11	RT	I-39 NB	10	
PR I-39	2674+34.51	128.63	RT	I-39 NB	11	
PR I-39	2674+68.45	127.41	RT	I-39 NB	13	
PR I-39	2674+83.43	127.52	RT	I-39 NB	13	
PR I-39	2675+50.01	127.77	RT	I-39 NB	9	
PR I-39	2675+61.04	160.39	RT	I-39 NB	6	
PR I-39	2675+91.80	159.00	RT	I-39 NB	6	
PR I-39	2675+92.28	128.50	RT	I-39 NB	10	
PR I-39	2676+06.47	128.54	RT	I-39 NB	10	
PR I-39	2676+18.58	159.12	RT	I-39 NB	10	
PR I-39	2676+20.50	128.69	RT	I-39 NB	8	
PR I-39	2676+26.49	158.27	RT	I-39 NB	13	
SUBTOTAL					409	

20100110						
TREE REMOVAL (6 TO 15 UNITS DIAMETER)						
ROAD	STA	OFFSET	LT/RT	ID	UNIT	REMARKS
PR I-39	2676+31.32	129.24	RT	I-39 NB	8	
PR I-39	2677+66.78	131.66	RT	I-39 NB	12	
PR I-39	2680+07.17	144.15	RT	I-39 NB	7	
PR I-39	2680+27.94	145.37	RT	I-39 NB	8	
PR I-39	2680+89.78	148.20	RT	I-39 NB	8	
PR I-39	2681+07.03	159.51	RT	NB I-39	10	
PR I-39	2681+08.98	151.69	RT	I-39 NB	8	
PR I-39	2681+44.94	158.41	RT	I-39 NB	10	
PR I-39	2681+56.31	138.81	RT	NB I-39	10	
PR I-39	2681+65.19	160.16	RT	I-39 NB	10	
PR I-39	2689+79.60	144.78	RT	I-39 NB	8	
PR I-39	2690+14.25	143.91	RT	I-39 NB	12	
PR I-39	2690+40.30	145.14	RT	I-39 NB	12	
PR I-39	2690+59.88	151.98	RT	I-39 NB	14	
PR I-39	2691+02.73	140.61	RT	I-39 NB	8	
PR I-39	2691+16.79	149.75	RT	I-39 NB	14	
PR I-39	2691+37.62	154.89	RT	I-39 NB	8	
PR I-39	2691+64.07	149.06	RT	I-39 NB	12	
PR I-39	2692+98.92	129.27	RT	I-39 NB	8	
PR I-39	2693+20.58	147.73	RT	I-39 NB	10	
PR I-39	2693+81.64	135.62	RT	I-39 NB	6	
PR I-39	2694+34.13	133.51	RT	I-39 NB	6	
PR I-39	2695+15.33	137.11	RT	I-39 NB	8	
PR I-39	2695+44.53	138.17	RT	I-39 NB	10	
PR I-39	2695+91.21	137.75	RT	I-39 NB	14	
PR I-39	2696+27.17	141.36	RT	I-39 NB	10	
PR I-39	2696+41.19	134.33	RT	I-39 NB	10	
PR I-39	2696+94.07	151.18	RT	I-39 NB	14	
PR I-39	2697+19.07	154.49	RT	I-39 NB	10	
PR I-39	2697+21.28	134.08	RT	I-39 NB	8	
PR I-39	2697+40.86	138.33	RT	I-39 NB	10	
PR I-39	2697+46.10	155.83	RT	I-39 NB	12	
PR I-39	2697+62.20	149.69	RT	I-39 NB	14	
PR I-39	2697+86.60	136.91	RT	I-39 NB	12	
PR I-39	2697+86.76	156.83	RT	I-39 NB	10	
PR I-39	2698+07.18	154.07	RT	I-39 NB	8	
PR I-39	2698+13.66	134.51	RT	I-39 NB	10	
PR I-39	2698+30.53	153.79	RT	I-39 NB	12	
PR I-39	2698+49.41	132.13	RT	I-39 NB	6	
PR I-39	2698+65.01	153.96	RT	I-39 NB	6	
PR I-39	2698+87.24	135.54	RT	I-39 NB	14	
PR I-39	2699+10.66	151.52	RT	I-39 NB	6	
PR I-39	2699+56.15	143.25	RT	I-39 NB	10	
PR I-39	2700+11.91	138.00	RT	I-39 NB	14	
PR I-39	2700+70.84	134.22	RT	I-39 NB	10	
SUBTOTAL					447	

MODEL: Schedules_1 [Sheet]
FILE NAME: c:\paword\hinesch_projects\projects\0193076\0264S92-TREE-shh-Schedule.dgn

USER NAME = esayre	DESIGNED - A. GIBSON	REVISED - 05/31/2024
PLOT SCALE = \$SCALE\$	DRAWN - E. SAYRE	REVISED -
PLOT DATE = 5/29/2024	CHECKED - J. TARDY	REVISED -
	DATE - 3/22/2024	REVISED -

**STATE OF ILLINOIS
DEPARTMENT OF TRANSPORTATION**

SCHEDULE OF QUANTITIES

SCALE: 1"=1'-0" SHEET 1 OF 4 SHEETS STA. TO STA.

F.A.I. RTE.	SECTION	COUNTY	TOTAL SHEETS	SHEET NO.
*	((201-3) (4-1.5)TR	WINNEBAGO	23	5
CONTRACT NO. 64S92				
ILLINOIS		FED. AID PROJECT		

*FAI ROUTE 39 (I-39) & FAP 301 (US 20)

20100110						
TREE REMOVAL (6 TO 15 UNITS DIAMETER)						
ROAD	STA	OFFSET	LT/RT	ID	UNIT	REMARKS
PR I-39	2701+26.77	133.32	RT	I-39 NB	6	
PR I-39	2702+02.03	140.09	RT	I-39 NB	12	
PR I-39	2702+54.40	151.01	RT	I-39 NB	8	
PR I-39	2702+66.92	132.39	RT	I-39 NB	8	
PR I-39	2703+18.25	145.84	RT	I-39 NB	6	
PR I-39	2703+63.99	128.65	RT	I-39 NB	8	
PR I-39	2704+08.56	154.37	RT	I-39 NB	8	
PR I-39	2704+16.68	134.51	RT	I-39 NB	10	
PR I-39	2704+26.29	155.83	RT	I-39 NB	8	
PR I-39	2704+35.72	137.42	RT	I-39 NB	8	
PR I-39	2704+44.37	159.05	RT	I-39 NB	8	
EX RAMP AD	59+19.62	57.49	RT	RAMP AD	9	
EX RAMP AD	59+75.60	51.64	RT	RAMP AD	12	
EX RAMP AD	59+94.71	43.80	RT	RAMP AD	14	
EX RAMP AD	60+20.51	35.57	RT	RAMP AD	14	
EX RAMP AD	60+46.10	50.26	RT	RAMP AD	12	
EX RAMP AD	60+96.18	86.41	RT	RAMP AD	10	
EX RAMP AD	61+32.37	83.69	RT	RAMP AD	10	
EX RAMP AD	61+79.70	90.48	RT	RAMP AD	12	
EX RAMP AD	61+80.71	74.71	RT	RAMP AD	6	
EX RAMP AD	62+74.91	53.91	RT	RAMP AD	7	
EX RAMP AD	63+03.54	114.82	RT	RAMP AD	13	
EX RAMP AD	63+07.78	44.55	RT	RAMP AD	7	
EX RAMP AD	63+20.02	86.87	RT	RAMP AD	9	
EX RAMP AD	63+23.18	68.26	RT	RAMP AD	6	
EX RAMP AD	63+30.73	45.91	RT	RAMP AD	6	
EX RAMP AD	63+42.78	42.40	RT	RAMP AD	7	
EX RAMP AD	64+78.19	36.86	RT	RAMP AD	8	
EX RAMP DB	20+85.64	37.85	RT	RAMP DB	10	
EX RAMP DB	20+91.83	37.28	RT	RAMP DB	10	
EX RAMP DB	21+71.19	36.16	RT	RAMP DB	10	
EX RAMP DB	23+09.21	37.45	RT	RAMP DB	10	
EX RAMP DB	26+81.15	69.15	RT	RAMP DB	8	
EX RAMP DB	32+96.42	60.89	RT	RAMP DB	6	
EX RAMP DB	36+91.26	100.04	RT	RAMP DB	6	
EX RAMP DB	36+95.96	109.79	RT	RAMP DB	6	
EX RAMP DB	37+51.94	82.51	RT	RAMP DB	8	
EX RAMP DB	41+03.18	76.14	RT	RAMP DB	6	
EX RAMP DB	41+98.18	61.53	RT	RAMP DB	7	
SUBTOTAL					339	
1 GRAND TOTAL					1609	

20100210						
TREE REMOVAL (OVER 15 UNITS DIAMETER)						
ROAD	STA	OFFSET	LT/RT	ID	UNIT	REMARKS
PR I-39	2635+68.97	109.66	LT	SB I-39	20	
PR I-39	2635+73.87	117.14	LT	SB I-39	16	
PR I-39	2637+05.51	103.10	LT	SB I-39	18	
PR I-39	2641+57.15	115.49	LT	SB I-39	20	
PR I-39	2673+56.96	91.65	LT	SB I-39	19	
PR I-39	2674+03.31	99.84	LT	SB I-39	20	
PR I-39	2674+62.24	89.13	LT	SB I-39	20	
PR I-39	2676+87.80	68.76	LT	SB I-39	16	
PR I-39	2677+15.92	81.75	LT	SB I-39	16	
PR I-39	2689+07.59	90.14	LT	SB I-39	18	
PR I-39	2689+45.66	91.78	LT	SB I-39	16	
PR I-39	2693+43.18	121.57	LT	SB I-39	18	
PR I-39	2693+46.24	80.74	LT	SB I-39	32	
PR I-39	2693+72.36	118.77	LT	SB I-39	16	
PR I-39	2693+79.38	117.00	LT	SB I-39	16	
PR I-39	2694+04.56	98.82	LT	SB I-39	30	
PR I-39	2699+83.73	111.08	LT	SB I-39	18	
PR I-39	2704+63.21	114.95	LT	SB I-39	24	
PR I-39	2704+87.83	119.37	LT	SB I-39	18	
PR I-39	2705+22.96	116.07	LT	SB I-39	36	
PR I-39	2705+27.49	115.10	LT	SB I-39	28	
PR I-39	2662+03.38	128.83	RT	NB I-39	30	
PR I-39	2663+39.19	104.23	RT	NB I-39	28	
PR I-39	2665+97.24	165.30	RT	NB I-39	23	
PR I-39	2666+76.58	132.39	RT	NB I-39	30	
PR I-39	2673+90.61	135.25	RT	NB I-39	18	
PR I-39	2677+43.47	164.01	RT	NB I-39	16	
PR I-39	2677+45.63	120.43	RT	NB I-39	16	
PR I-39	2692+29.63	135.32	RT	NB I-39	24	
PR I-39	2694+72.49	134.95	RT	NB I-39	24	
PR I-39	2695+69.64	137.89	RT	NB I-39	24	
PR I-39	2696+62.27	138.74	RT	NB I-39	18	
PR I-39	2698+89.25	135.15	RT	NB I-39	18	
PR I-39	2702+94.27	156.814	RT	NB I-39	30	
GRAND TOTAL					734	

MODEL: Schedules 2 [Sheet]
FILE NAME: c:\pwworkdir\benesch_projects\projects\0193076\0264S92-TREE-shh-Schedule.dgn

USER NAME = esayre	DESIGNED - A. GIBSON	REVISED - 05/31/2024
PLOT SCALE = \$\$SCALE\$	DRAWN - E. SAYRE	REVISED -
PLOT DATE = 5/29/2024	CHECKED - J. TARDY	REVISED -
	DATE - 3/22/2024	REVISED -

STATE OF ILLINOIS
DEPARTMENT OF TRANSPORTATION

SCHEDULE OF QUANTITIES

SCALE: 1"=1'-0" SHEET 2 OF 4 SHEETS STA. TO STA.

F.A.I RTE.	SECTION	COUNTY	TOTAL SHEETS	SHEET NO.
*	((201-3) (4-1.5))TR	WINNEBAGO	23	6
CONTRACT NO. 64S92				
ILLINOIS		FED. AID PROJECT		

*FAI ROUTE 39 (I-39) & FAP 301 (US 20) *

MODEL: Schedules_3 [Sheet]
 FILE NAME: c:\pwworkdir\benesch_projects\project\193076\264S92-TREE-shh-Schedule.dgn

20100500							
TREE REMOVAL, ACRES							
ROAD	STA	OFFSET	STA	OFFSET	ID	ACRE	REMARKS
PR I-39	2628+86.61	94.80' LT	2635+41.52	137.61' LT	SB I-39	0.54	
PR I-39	2635+88.87	138.33' LT	2638+12.11	133.7' LT	SB I-39	0.11	
PR I-39	2638+60.98	135.35' LT	2639+85.46	134.07' LT	SB I-39	0.05	
PR I-39	2642+15.95	137.14' LT	2642+88.75	139.44' LT	SB I-39	0.02	
PR I-39	2642+15.95	137.14' LT	2642+88.75	139.44' LT	SB I-39	0.04	
PR I-39	2643+55.06	76.54' LT	2644+28.41	90.86' LT	SB I-39	0.07	
PR I-39	2643+55.06	76.54' LT	2644+28.41	90.86' LT	SB I-39	0.005	
PR I-39	2644+63.15	79.57' LT	2647+57.82	64.78' LT	SB I-39	0.42	
PR I-39	2644+63.15	79.57' LT	2647+57.82	64.78' LT	SB I-39	0.09	
PR I-39	2648+49.26	158.69' LT	2652+78.46	83.61' LT	SB I-39	0.72	
PR I-39	2651+74.10	235.11' LT	2656+92.49	151.26' LT	SB I-39	0.31	
PR I-39	2651+74.10	235.11' LT	2656+92.49	151.26' LT	SB I-39	0.42	
PR I-39	2663+71.21	130.52' LT	2664+61.21	130.51' LT	SB I-39	0.07	
PR I-39	2669+59.50	98.72' LT	2671+14.98	117.39' LT	SB I-39	0.13	
PR I-39	2669+59.50	98.72' LT	2671+14.98	117.39' LT	SB I-39	0.02	
PR I-39	2674+62.74	139.51' LT	2673+09.59	133.89' LT	SB I-39	0.04	
PR I-39	2673+46.35	132.46' LT	2673+69.10	131.62' LT	SB I-39	0.001	
PR I-39	2673+46.35	132.46' LT	2673+69.10	131.62' LT	SB I-39	0.001	
PR I-39	2674+17.66	130.49' LT	2674+58.50	130.28' LT	SB I-39	0.005	
PR I-39	2675+11.00	130.13' LT	2676+03.50	130.41' LT	SB I-39	0.03	
PR I-39	2677+60.26	129.60' LT	2677+92.52	129.35' LT	SB I-39	0.002	
PR I-39	2678+12.91	131.05' LT	2681+88.04	50.96' LT	SB I-39	0.32	
PR I-39	2678+12.91	131.05' LT	2681+88.04	50.96' LT	SB I-39	0.07	
PR I-39	2683+47.05	130.35' LT	2683+71.59	122.1' LT	SB I-39	0.01	
PR I-39	2687+68.03	131.70' LT	2688+12.39	130.31' LT	SB I-39	0.005	
PR I-39	2687+68.03	131.70' LT	2688+12.39	130.31' LT	SB I-39	0.005	
PR I-39	2702+05.32	147.01' LT	2704+34.27	152.72' LT	SB I-39	0.02	
PR I-39	2707+50.26	138.88' LT	2709+48.62	76.71' LT	SB I-39	0.20	
PR I-39	2707+50.26	138.88' LT	2709+48.62	76.71' LT	SB I-39	0.04	
PR I-39	2632+55.26	115.07' RT	2641+86.56	161.46' RT	NB I-39	0.70	
PR I-39	2641+86.56	161.46' RT	2644+00.00	163.38' RT	NB I-39	0.26	
PR I-39	2642+02.02	163.16' RT	2644+00.00	176.00' RT	NB I-39	0.04	
PR I-39	2643+99.51	174.94' RT	2648+36.56	165.16' RT	NB I-39	0.71	
PR I-39	2644+00.00	175.00' RT	2648+49.33	199.0' RT	NB I-39	0.21	
PR I-39	2649+39.91	97.71' RT	2652+73.97	133.83' RT	NB I-39	0.43	
PR I-39	2649+67.96	179.97' RT	2650+13.79	174.18' RT	NB I-39	0.02	
PR I-39	2650+70.93	165.97' RT	2651+96.10	166.4' RT	NB I-39	0.01	
PR I-39	2652+74.21	166.66' RT	2653+22.19	166.82' RT	NB I-39	0.02	
PR I-39	2653+77.35	166.49' RT	2654+35.18	146.03' RT	NB I-39	0.03	
PR I-39	2654+51.02	166.21' RT	2656+07.98	166.87' RT	NB I-39	0.06	
PR I-39	2666+11.57	149.45' RT	2666+63.98	169.51' RT	NB I-39	0.02	
PR I-39	2666+87.79	168.87' RT	2670+79.37	168.56' RT	NB I-39	0.16	
PR I-39	2670+92.02	168.17' RT	2674+90.44	169.63' RT	NB I-39	0.22	
PR I-39	2681+08.35	124.25' RT	2685+97.37	168.33' RT	NB I-39	0.39	
PR I-39	2687+92.30	169.70' RT	2688+53.59	119.26' RT	NB I-39	0.19	
PR I-39	2702+79.55	165.61' RT	2703+96.80	168.43' RT	NB I-39	0.03	
PR I-39	2704+94.63	167.75' RT	2706+31.35	124.09' RT	NB I-39	0.14	
PR I-39	2707+21.18	123.21' RT	2710+18.42	137.43' RT	NB I-39	0.23	
PR I-39	2710+18.42	137.43' RT	2716+26.90	307.6' RT	NB I-39	0.71	
EX RAMP AD	56+92.40	137.59' RT	62+66.81	132.75' RT	RAMP AD	0.70	
EX RAMP AD	59+40.17	46.18' RT	59+71.40	38.15' RT	RAMP AD	0.01	
EX RAMP AD	63+73.70	113.71' RT	64+67.87	108.21' RT	RAMP AD	0.07	
EX RAMP AD	66+17.66	107.34' RT	74+14.34	85.57' RT	RAMP AD	0.83	
SUBTOTAL						9.00	

20100500							
TREE REMOVAL, ACRES							
ROAD	STA	OFFSET	STA	OFFSET	ID	ACRE	REMARKS
EX RAMP AD	74+23.18	134.23' RT	75+28.94	156.36' RT	RAMP AD	0.06	
EX RAMP DB	17+47.61	108.37' RT	24+56.01	146.14' RT	RAMP DB	0.76	
EX RAMP DB	25+36.35	147.92' RT	27+20.16	105.94' RT	RAMP DB	0.13	
EX RAMP DB	30+60.86	106.99' RT	36+29.51	120.69' RT	RAMP DB	0.48	
EX RAMP DB	36+32.93	116.62' RT	47+58.39	45.72' RT	RAMP DB	1.08	
EX RAMP DB	50+01.04	79.01' RT	53+09.67	84.71' RT	RAMP DB	0.12	
EX RAMP DB	53+43.67	85.33' RT	58+25.58	89.27' RT	RAMP DB	0.16	
EX RAMP DB	59+56.85	95.98' RT	64+67.94	97.51' RT	RAMP DB	0.16	
EX RAMP DB	72+37.43	70.66' RT	73+11.25	69.04' RT	RAMP DB	0.03	
EX RAMP DB	73+21.06	68.55' RT	74+51.38	69.83' RT	RAMP DB	0.07	
EX RAMP DB	75+14.51	74.72' RT	77+61.67	61.87' RT	RAMP DB	0.17	
EX RAMP DB	77+72.08	93.95' RT	81+24.20	73.11' RT	RAMP DB	0.18	
SUBTOTAL						3.25	
CN AND UP RAILROAD							
ROAD	STA	OFFSET	STA	OFFSET	ID	ACRE	REMARKS
PR I-39	2648+40.96	70.38' LT	2648+90.06	48.72' LT	CN RAILROAD	0.05	
PR I-39	2680+16.69	155.00' LT	2681+50.18	145' LT	UP RAILROAD	0.26	
PR I-39	2682+31.33	138.95' LT	2683+47.05	130.35' LT	UP RAILROAD	0.10	
PR I-39	2648+99.54	119.42' RT	2649+67.96	179.97' RT	CN RAILROAD	0.09	
PR I-39	2684+29.46	95.59' RT	2686+57.87	169.62' RT	UP RAILROAD	0.12	
PR I-39	2686+81.07	102.16' RT	2687+92.30	169.7' RT	UP RAILROAD	0.06	
SUBTOTAL						0.75	
GRAND TOTAL						13.00	

X6640108							
FENCE REMOVAL AND REINSTALLATION							
ROAD	STA	OFFSET	STA	OFFSET	ID	FOOT	REMARKS
PR I-39	2651+09.91	166.71' RT	2652+00.00	166.414' RT	NB I-39	93	
GRAND TOTAL						93	

USER NAME = esayre	DESIGNED - A. GIBSON	REVISED - 05/31/2024
PLOT SCALE = \$SCALE\$	DRAWN - E. SAYRE	REVISED -
PLOT DATE = 6/3/2024	CHECKED - J. TARDY	REVISED -
	DATE - 3/22/2024	REVISED -

STATE OF ILLINOIS
 DEPARTMENT OF TRANSPORTATION

SCHEDULE OF QUANTITIES

SCALE: 1"=1'-0" SHEET 3 OF 4 SHEETS STA. TO STA.

F.A.I RTE.	SECTION	COUNTY	TOTAL SHEETS	SHEET NO.
*	((201-3) (4-1.5))TR	WINNEBAGO	23	7
CONTRACT NO. 64S92				

*FAI ROUTE 39 (I-39) & FAP 301 (US 20) *

28000400 PERIMETER EROSION BARRIER							
ROAD	STA	OFFSET	STA	OFFSET	ID	FOOT	REMARKS
PR I-39	2678+00.27	130.4' LT	2680+51.34	155' LT	UP RAILROAD	218	
PR I-39	2680+51.34	155' LT	2681+50.18	145' LT	UP RAILROAD	134	
PR I-39	2682+31.33	139' LT	2683+69.60	130.38' LT	UP RAILROAD	139	
PR I-39	2685+17.17	169.5' RT	2686+57.87	169.62' RT	UP RAILROAD	141	
PR I-39	1687+39.20	169.7' RT	2688+55.81	169.7' RT	UP RAILROAD	116	
GRAND TOTAL						748	

25000312 SEEDING, CLASS 4A							
ROAD	STA	OFFSET	STA	OFFSET	ID	ACRE	REMARKS
PR I-39	2680+16.69	155' LT	2682+65.02	54.94' LT	UP RAILROAD	0.26	
PR I-39	2682+31.33	138.95' LT	2683+71.59	122.1' LT	UP RAILROAD	0.1	
PR I-39	2684+29.46	95.59' RT	2685+97.37	168.33' RT	UP RAILROAD	0.12	
PR I-39	2686+81.07	102.16' RT	2687+92.30	169.7' RT	UP RAILROAD	0.06	
GRAND TOTAL						0.50	

25000750 MOWING							
ROAD	STA	OFFSET	STA	OFFSET	ID	ACRE	REMARKS
PR I-39	2628+86.61	62.5 LT	2647+76.55	44.4 LT	SB I-39	2.41	
PR I-39	2632+56.00	66.0 RT	2648+19.49	72.5 RT	NB I-39	1.657	
PR I-39	2648+92.01	41.3 LT	2656+90.78	39.9 LT	SB I-39	0.885	
PR I-39	2649+33.08	76.6 RT	2656+92.21	75.3 RT	NB I-39	1.03	
PR I-39	2662+49.69	42.7 LT	2682+08.27	38.7 LT	SB I-39	2.982	
PR I-39	2661+88.21	82.4 RT	2683+96.28	75.5 RT	NB I-39	3.799	
PR I-39	2685+00.95	36.5 LT	2709+48.61	76.7 LT	SB I-39	5.749	
PR I-39	2686+38.02	76.3 RT	2716+45.85	232.6 RT	NB I-39	4.515	
EX RAMP AD	57+36.87	10.5 RT	75+29.32	10.8 RT	RAMP AD	3.088	
EX RAMP DB	17+63.16	12.1 RT	27+26.18	16.2 RT	RAMP DB	1.555	
EX RAMP DB	30+67.46	20.3 RT	47+62.89	23.3 RT	RAMP DB	2.644	
EX RAMP DB	49+63.24	12.2 RT	64+86.91	28.2 RT	RAMP DB	2.512	
EX RAMP DB	72+36.35	24.3 RT	81+23.96	19.5 RT	RAMP DB	1.023	
GRAND TOTAL						34.00	

25000320 SEEDING, CLASS 5							
ROAD	STA	OFFSET	STA	OFFSET	ID	ACRE	REMARKS
PR I-39	2680+16.69	155' LT	2682+65.02	54.94' LT	UP RAILROAD	0.26	
PR I-39	2682+31.33	138.95' LT	2683+71.59	122.1' LT	UP RAILROAD	0.1	
PR I-39	2684+29.46	95.59' RT	2685+97.37	168.3' RT	UP RAILROAD	0.12	
PR I-39	2686+81.07	102.16' RT	2687+92.30	169.7' RT	UP RAILROAD	0.06	
GRAND TOTAL						0.50	

25100125 MULCH, METHOD 3							
ROAD	STA	OFFSET	STA	OFFSET	ID	ACRE	REMARKS
PR I-39	2680+16.69	155' LT	2682+65.02	54.94' LT	UP RAILROAD	0.26	
PR I-39	2682+31.33	138.95' LT	2683+71.59	122.1' LT	UP RAILROAD	0.1	
PR I-39	2684+29.46	95.59' RT	2685+97.37	168.33' RT	UP RAILROAD	0.12	
PR I-39	2686+81.07	102.16' RT	2687+92.30	169.7' RT	UP RAILROAD	0.06	
GRAND TOTAL						0.50	

MODEL: Schedules 4 [Sheet]
 FILE NAME: c:\paword\hinesch_projects\projects\0193076\0264S92-TREE-shh-Schedule.dgn

USER NAME = esayre	DESIGNED - A. GIBSON	REVISED - 05/31/2024
	DRAWN - E. SAYRE	REVISED -
PLOT SCALE = \$\$SCALE\$	CHECKED - J. TARDY	REVISED -
PLOT DATE = 6/3/2024	DATE - 3/22/2024	REVISED -

**STATE OF ILLINOIS
DEPARTMENT OF TRANSPORTATION**

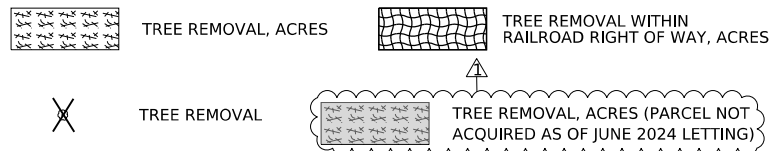
SCHEDULE OF QUANTITIES

SCALE: 1"=1'-0" SHEET 4 OF 4 SHEETS STA. TO STA.

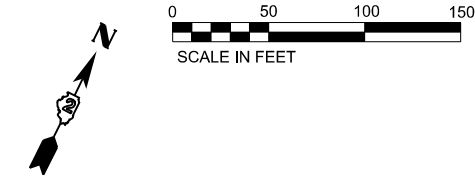
F.A.I. RTE.	SECTION	COUNTY	TOTAL SHEETS	SHEET NO.
*	((201-3) (4-1.5))TR	WINNEBAGO	23	8
CONTRACT NO. 64S92				
		ILLINOIS	FED. AID PROJECT	

*FAI ROUTE 39 (I-39) & FAP 301 (US 20) *

REMOVAL LEGEND

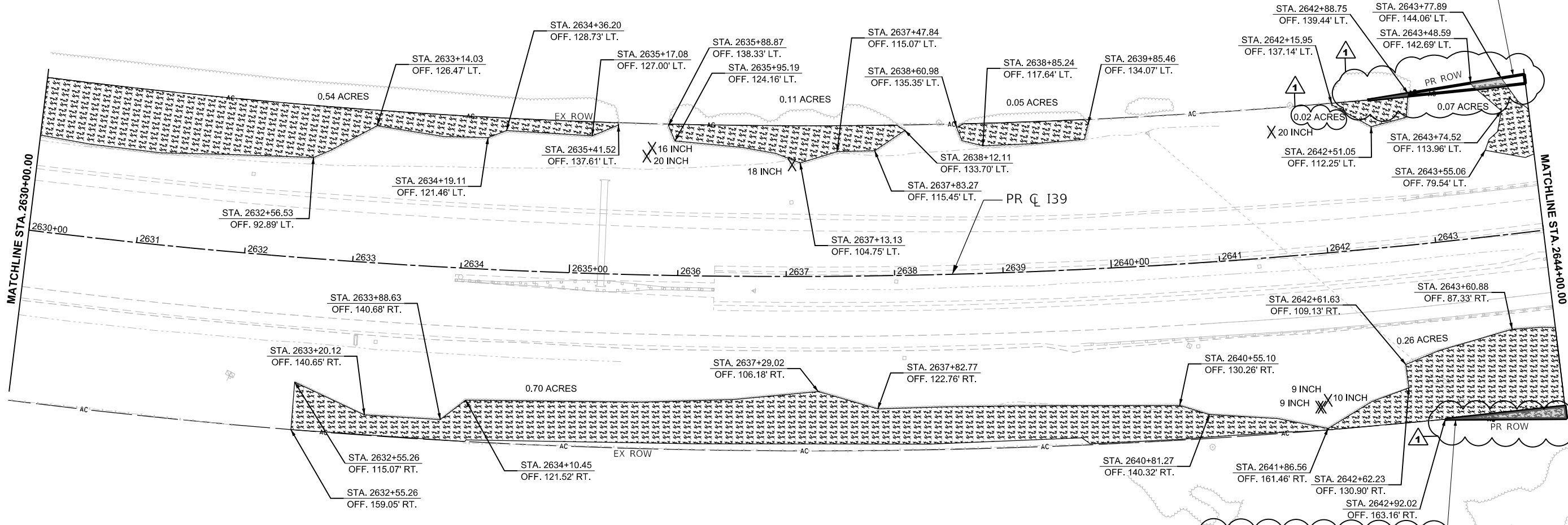


- NOTES:
- FOR TREE TRUNK DIAMETERS MARKED AS "UNK", DIAMETER IS UNKNOWN. ASSUMED 10 UNIT DIAMETER FOR QUANTITY CALCULATIONS.
 - CONTRACTS 64B13 AND 64R71 WILL BE ACTIVE CONSTRUCTION PROJECTS. TOPOGRAPHIC CONDITIONS MAY VARY FROM THE PLANS.



PARCEL 21507001
 IS NOT ACQUIRED AS OF JUNE 2024 LETTING
 TREE REMOVALS WITHIN THIS PARCEL CANNOT
 TAKE PLACE FOR CONTRACT 64S92 UNLESS
 THE ENGINEER CONFIRMS LAND ACQUISITION
 PRIOR TO OCTOBER 1, 2024 START DATE FOR
 TREE REMOVAL. SEE GENERAL NOTES FOR
 MORE INFORMATION.

PARCEL 21507002
 IS NOT ACQUIRED AS OF JUNE 2024 LETTING
 TREE REMOVALS WITHIN THIS PARCEL CANNOT
 TAKE PLACE FOR CONTRACT 64S92 UNLESS
 THE ENGINEER CONFIRMS LAND ACQUISITION
 PRIOR TO OCTOBER 1, 2024 START DATE FOR
 TREE REMOVAL. SEE GENERAL NOTES FOR
 MORE INFORMATION.



MODEL: PR I-39 - ML Removal Sheet 02 (Sheet)
 FILE NAME: c:\pwworkdir\benesch_projects\projects\0193156\264S92-TREE-rem-ML.dgn

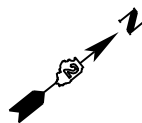
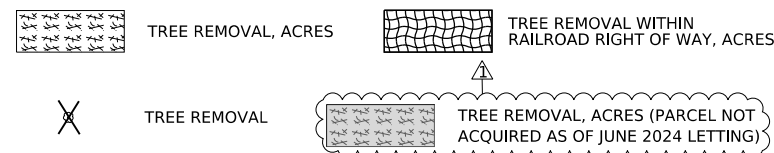
USER NAME = esayre	DESIGNED - A.GIBSON	REVISED - 05/31/2024
PLOT SCALE = \$SCALE\$	DRAWN - E.SAYRE	REVISED -
PLOT DATE = 6/3/2024	CHECKED - J.TARDY	REVISED -
	DATE - 3/22/2024	REVISED -

STATE OF ILLINOIS
DEPARTMENT OF TRANSPORTATION

EXISTING ROADWAY AND REMOVAL PLANS I-39 / US 20		
SCALE: 1"=50'	SHEET 2 OF 15 SHEETS	TO STA. 2644+00.00

F.A.I. RTE.	SECTION	COUNTY	TOTAL SHEETS	SHEET NO.
	((201-3) (4-1.5))TR	WINNEBAGO	23	10
CONTRACT NO. 64S92				
ILLINOIS FED. AID PROJECT				

REMOVAL LEGEND

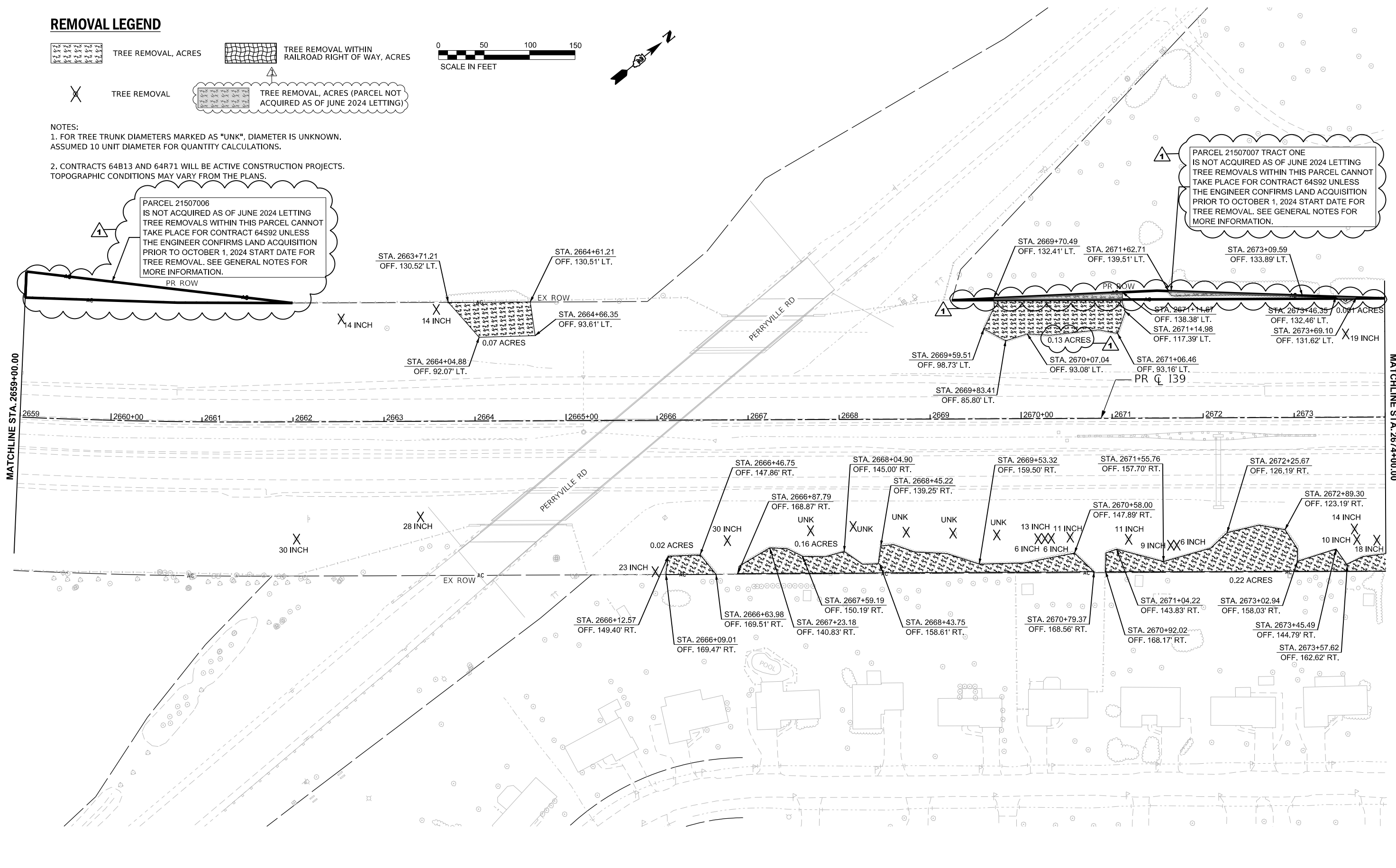


NOTES:

- FOR TREE TRUNK DIAMETERS MARKED AS "UNK", DIAMETER IS UNKNOWN. ASSUMED 10 UNIT DIAMETER FOR QUANTITY CALCULATIONS.
- CONTRACTS 64B13 AND 64R71 WILL BE ACTIVE CONSTRUCTION PROJECTS. TOPOGRAPHIC CONDITIONS MAY VARY FROM THE PLANS.

PARCEL 21507006 IS NOT ACQUIRED AS OF JUNE 2024 LETTING. TREE REMOVALS WITHIN THIS PARCEL CANNOT TAKE PLACE FOR CONTRACT 64S92 UNLESS THE ENGINEER CONFIRMS LAND ACQUISITION PRIOR TO OCTOBER 1, 2024 START DATE FOR TREE REMOVAL. SEE GENERAL NOTES FOR MORE INFORMATION.

PARCEL 21507007 TRACT ONE IS NOT ACQUIRED AS OF JUNE 2024 LETTING. TREE REMOVALS WITHIN THIS PARCEL CANNOT TAKE PLACE FOR CONTRACT 64S92 UNLESS THE ENGINEER CONFIRMS LAND ACQUISITION PRIOR TO OCTOBER 1, 2024 START DATE FOR TREE REMOVAL. SEE GENERAL NOTES FOR MORE INFORMATION.



MODEL: PR I-39 - ML Removal Sheet 04 (Sheet)
 FILE NAME: c:\pwworkdir\benesch_projects\projects\193156\264S92-TREE-rem-ML.dgn

USER NAME = esayre	DESIGNED - A.GIBSON	REVISED - 05/31/2024
PLOT SCALE = \$SCALE\$	DRAWN - E.SAYRE	REVISED -
PLOT DATE = 6/3/2024	CHECKED - J.TARDY	REVISED -
	DATE - 3/22/2024	REVISED -

**STATE OF ILLINOIS
DEPARTMENT OF TRANSPORTATION**

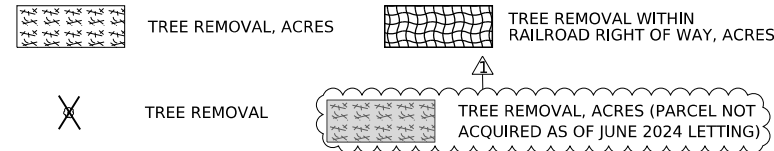
**EXISTING ROADWAY AND REMOVAL PLANS
I-39 / US 20**

SCALE: 1"=50' SHEET 4 OF 15 SHEETS STA. 2659+00.00 TO STA. 2674+00.00

F.A.I RTE.	SECTION	COUNTY	TOTAL SHEETS	SHEET NO.
	((201-3) (4-1.5)TR	WINNEBAGO	23	12
CONTRACT NO. 64S92				

ILLINOIS FED. AID PROJECT

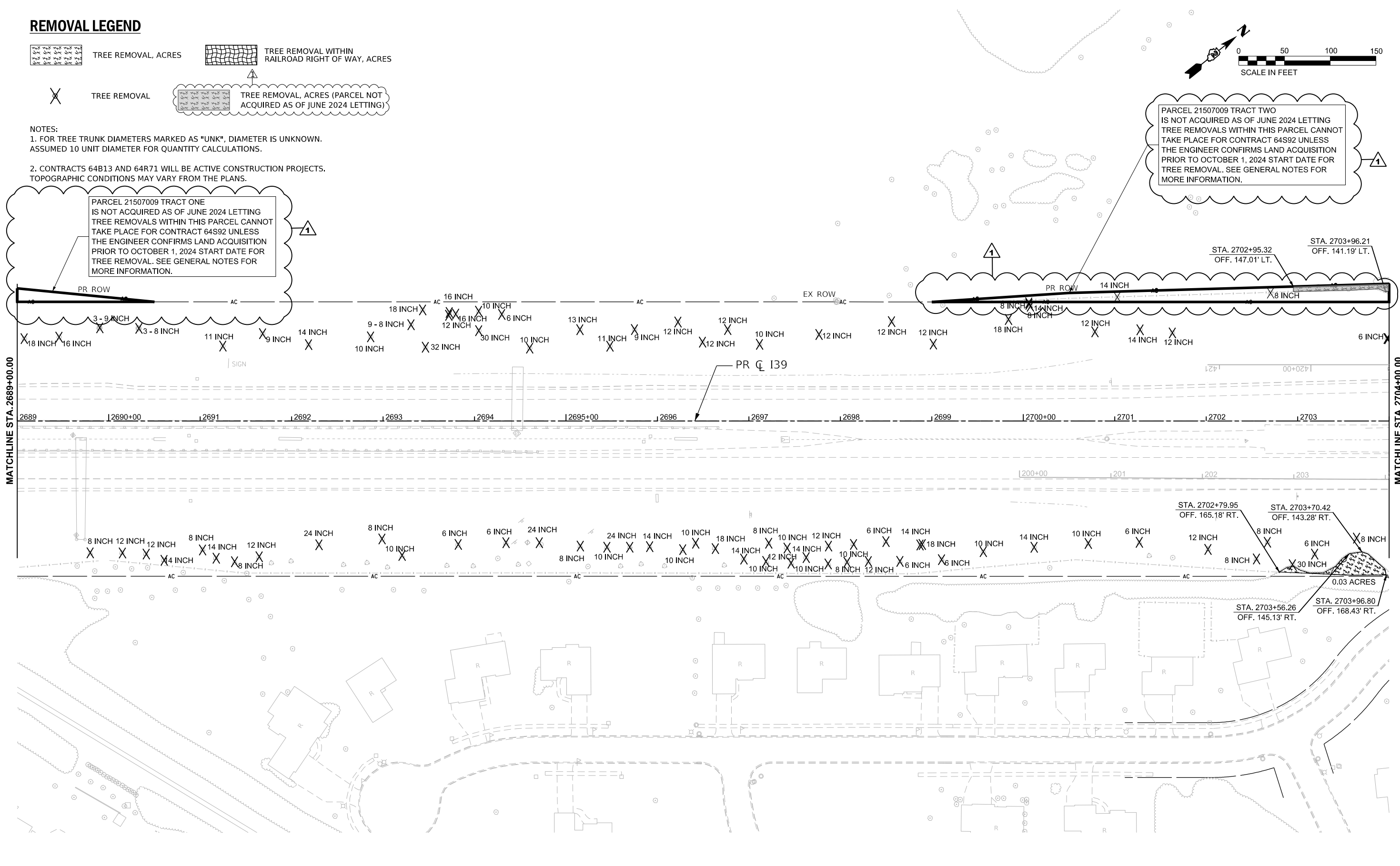
REMOVAL LEGEND



- NOTES:
- FOR TREE TRUNK DIAMETERS MARKED AS "UNK", DIAMETER IS UNKNOWN. ASSUMED 10 UNIT DIAMETER FOR QUANTITY CALCULATIONS.
 - CONTRACTS 64B13 AND 64R71 WILL BE ACTIVE CONSTRUCTION PROJECTS. TOPOGRAPHIC CONDITIONS MAY VARY FROM THE PLANS.

PARCEL 21507009 TRACT TWO IS NOT ACQUIRED AS OF JUNE 2024 LETTING. TREE REMOVALS WITHIN THIS PARCEL CANNOT TAKE PLACE FOR CONTRACT 64S92 UNLESS THE ENGINEER CONFIRMS LAND ACQUISITION PRIOR TO OCTOBER 1, 2024 START DATE FOR TREE REMOVAL. SEE GENERAL NOTES FOR MORE INFORMATION.

PARCEL 21507009 TRACT ONE IS NOT ACQUIRED AS OF JUNE 2024 LETTING. TREE REMOVALS WITHIN THIS PARCEL CANNOT TAKE PLACE FOR CONTRACT 64S92 UNLESS THE ENGINEER CONFIRMS LAND ACQUISITION PRIOR TO OCTOBER 1, 2024 START DATE FOR TREE REMOVAL. SEE GENERAL NOTES FOR MORE INFORMATION.



MODEL: PR I39 - ML Removal Sheet 06 (Sheet)
 FILE NAME: c:\pwworkdir\benesch_projects\projects\0193156\264S92-TREE-rem-ML.dgn

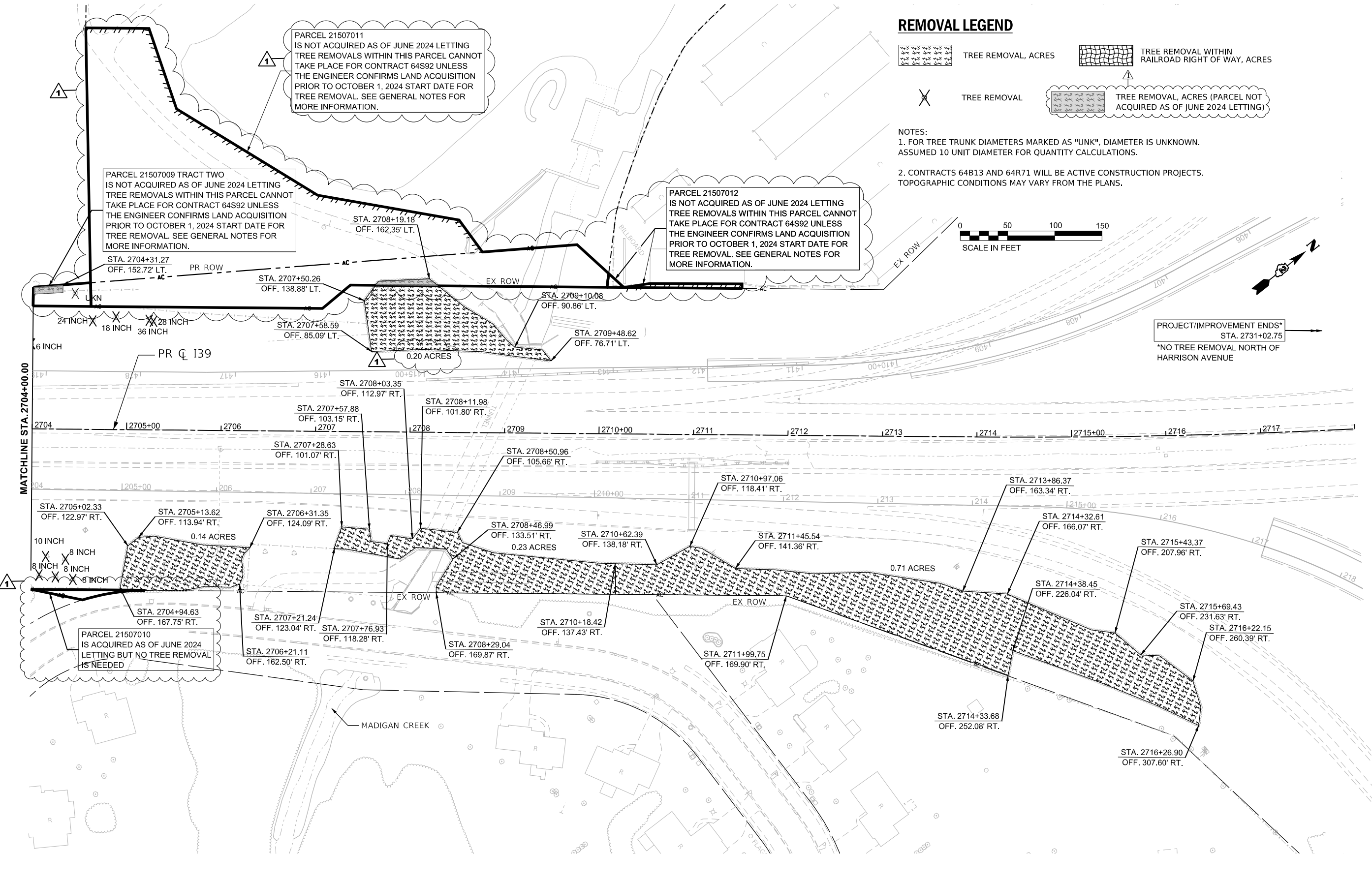
USER NAME = esayre	DESIGNED - A.GIBSON	REVISED - 05/31/2024
PLOT SCALE = \$SCALE\$	DRAWN - E.SAYRE	REVISED -
PLOT DATE = 6/3/2024	CHECKED - J.TARDY	REVISED -
	DATE - 3/22/2024	REVISED -

STATE OF ILLINOIS
DEPARTMENT OF TRANSPORTATION

EXISTING ROADWAY AND REMOVAL PLANS
I-39 / US 20

SCALE: 1"=50' SHEET 6 OF 15 SHEETS STA. 2689+00.00 TO STA. 2704+00.00

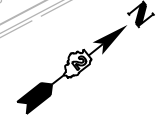
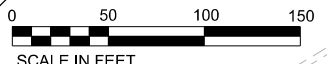
F.A.I. RTE.	SECTION	COUNTY	TOTAL SHEETS	SHEET NO.
	((201-3) (4-1.5))TR	WINNEBAGO	23	14
CONTRACT NO. 64S92				
ILLINOIS FED. AID PROJECT				



REMOVAL LEGEND

- TREE REMOVAL, ACRES
- TREE REMOVAL WITHIN RAILROAD RIGHT OF WAY, ACRES
- TREE REMOVAL
- TREE REMOVAL, ACRES (PARCEL NOT ACQUIRED AS OF JUNE 2024 LETTING)

- NOTES:
1. FOR TREE TRUNK DIAMETERS MARKED AS "UNK", DIAMETER IS UNKNOWN. ASSUMED 10 UNIT DIAMETER FOR QUANTITY CALCULATIONS.
 2. CONTRACTS 64B13 AND 64R71 WILL BE ACTIVE CONSTRUCTION PROJECTS. TOPOGRAPHIC CONDITIONS MAY VARY FROM THE PLANS.



PROJECT/IMPROVEMENT ENDS*
STA. 2731+02.75
*NO TREE REMOVAL NORTH OF HARRISON AVENUE

MODEL: PR I39 - ML Removal Sheet 07 (Sheet)
FILE NAME: c:\pwworkdir\benesch_projects\projects\193156\264S92-TREE-rem-ML.dgn

USER NAME = esayre	DESIGNED - A.GIBSON	REVISED - 05/31/2024
PLOT SCALE = \$SCALE\$	DRAWN - E.SAYRE	REVISED -
PLOT DATE = 6/3/2024	CHECKED - J.TARDY	REVISED -
	DATE - 3/22/2024	REVISED -

**STATE OF ILLINOIS
DEPARTMENT OF TRANSPORTATION**

**EXISTING ROADWAY AND REMOVAL PLANS
I-39 / US 20**

SCALE: 1"=50' SHEET 7 OF 15 SHEETS STA. 2704+00.00 TO STA. 2718+00.00

F.A.I RTE.	SECTION	COUNTY	TOTAL SHEETS	SHEET NO.
	((201-3) (4-1.5)TR	WINNEBAGO	23	15
CONTRACT NO. 64S92				

*FAI ROUTE 39 (I-39) & FAP 301 (US 20) *