

STATE OF ILLINOIS
DEPARTMENT OF TRANSPORTATION

F.A.I. RTE.	SECTION	COUNTY	TOTAL SHEETS	SHEET NO.
*	((201-3) (4-1,5))TR	WINNEBAGO	23	1
		ILLINOIS	CONTRACT NO. 64S92	

*FAI ROUTE 39 (I-39) & FAP 301 (US 20)

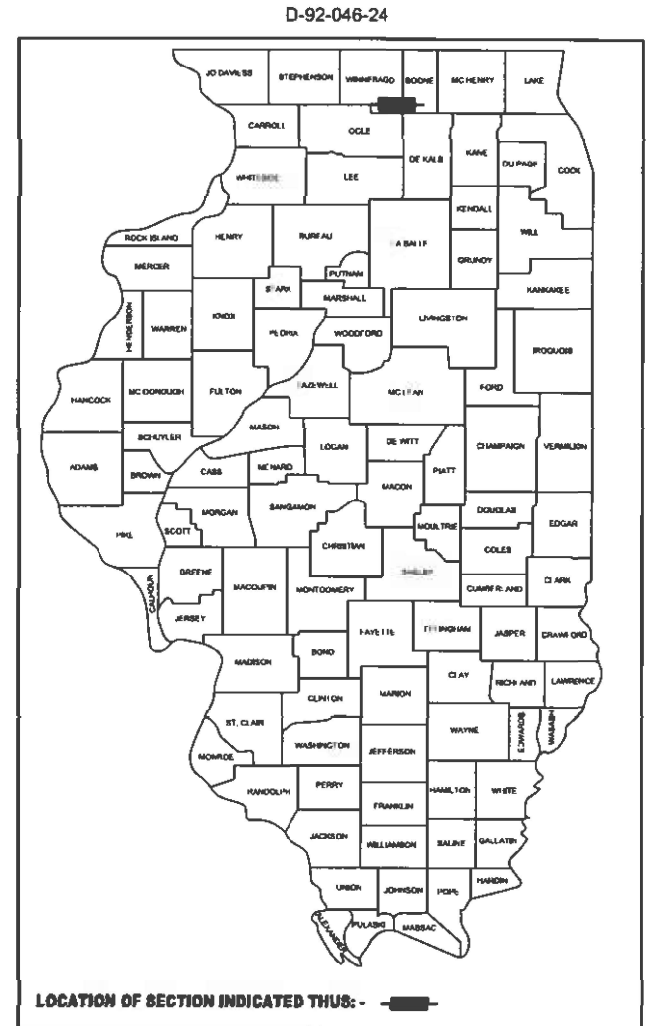
FOR INDEX OF SHEETS, SEE SHEET NO. 2
FOR STATE STANDARDS, SEE SHEET NO. 2

PROPOSED HIGHWAY PLANS

FAI ROUTE 39 (I-39) & FAP ROUTE 301 (US 20)
SECTION ((201-3) (4-1,5))TR
PROJECT

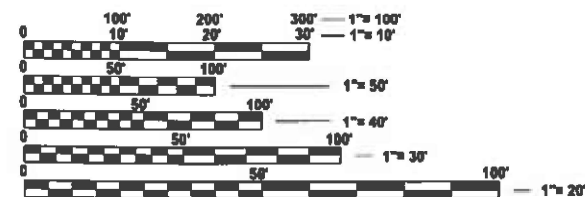
ADVANCED TREE REMOVAL FOR
RECONSTRUCTION OF I-39/US20:
I-39 FROM 0.3 MI E OF MULFORD ROAD
TO 0.2 MI N OF HARRISON AVENUE
WINNEBAGO COUNTY

C-92-048-24



TOWNSHIPS: ROCKFORD
& CHERRY VALLEY

SECTIONS: 16, 9, 10, 11,
3, 2, 35 AND 36

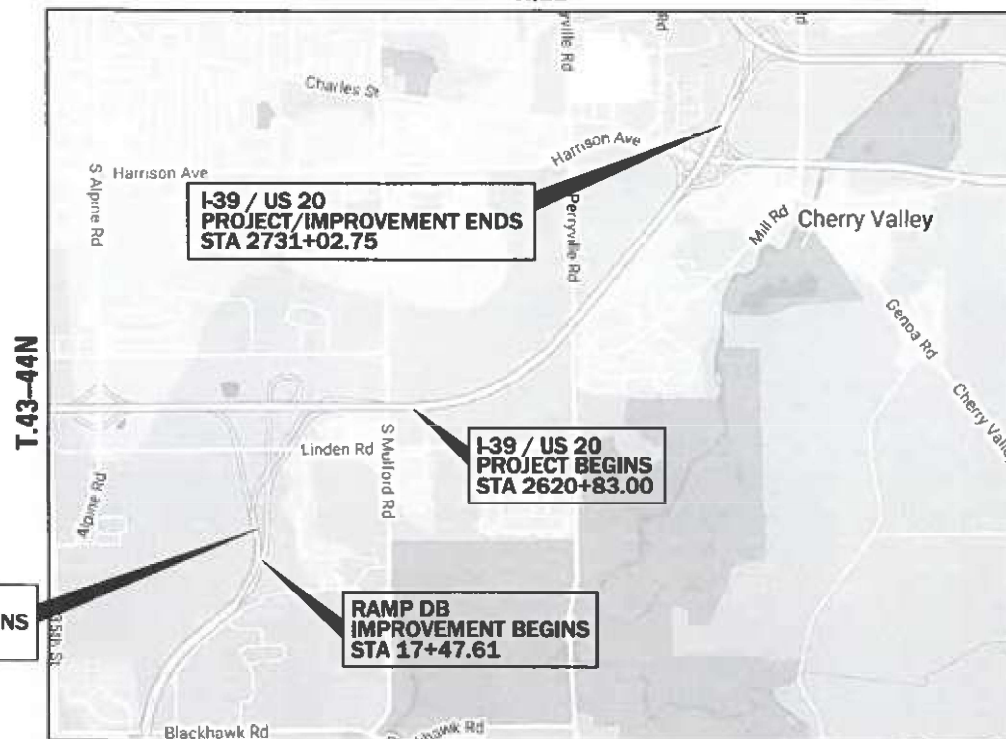


FULL SIZE PLANS HAVE BEEN PREPARED USING STANDARD
ENGINEERING SCALES. REDUCED SIZED PLANS WILL NOT
CONFORM TO STANDARD SCALES. IN MAKING MEASUREMENTS
ON REDUCED PLANS, THE ABOVE SCALES MAY BE USED.

J.U.L.I.E.
JOINT UTILITY LOCATION INFORMATION FOR EXCAVATION
1-800-892-0123
OR 811

SECTION ENGINEER: ANDREW LEE
PROJECT MANAGER: ROBERT BARTON (815) 284-5958
Robert.Barton@Illinois.gov

CONTRACT NO. 64S92



EXPIRATION DATE: 11-30-2025

Aimee Gibson
DATE: 3-22-2024

GROSS LENGTH = 11,019.75 FT. = 2.09 MILE
NET LENGTH = 11,019.75 FT. = 2.09 MILE



STATE OF ILLINOIS
DEPARTMENT OF TRANSPORTATION

SUBMITTED March 29 2024
Aimee L. Gibson
REGIONAL ENGINEER

May 10, 2024 [Signature]
ENGINEER OF DESIGN AND ENVIRONMENT

May 10, 2024 [Signature]
DIRECTOR OF HIGHWAYS PROJECT IMPLEMENTATION

PRINTED BY THE AUTHORITY
OF THE STATE OF ILLINOIS

INDEX OF SHEETS

1	COVER SHEET
2	INDEX OF SHEETS AND HIGHWAY STANDARDS
3	GENERAL NOTES
4	SUMMARY OF QUANTITIES
5-8	SCHEDULE OF QUANTITIES
9-23	EXISTING ROADWAY AND REMOVAL PLANS

HIGHWAY STANDARDS

000001-08	STANDARD SYMBOLS, ABBREVIATIONS AND PATTERNS
701001-02	OFF-ROAD OPERATIONS, 2L, 2W, MORE THAN 15' AWAY
701006-05	OFF-ROAD OPERATIONS, 2L, 2W, 15' TO 24" FROM PAVEMENT EDGE
701011-04	OFF-ROAD MOVING OPERATIONS, 2L, 2W, DAY ONLY
701101-05	OFF-ROAD OPERATIONS, MULTILANE, 15' TO 24" FROM PAVEMENT EDGE
701106-02	OFF-ROAD OPERATIONS, MULTILANE, MORE THAN 15' AWAY
701201-05	LANE CLOSURE, 2L, 2W, DAY ONLY FOR SPEEDS ≥ 45 MPH
701456-05	PARTIAL EXIT RAMP CLOSURE FREEWAY / EXPRESSWAY
701901-09	TRAFFIC CONTROL DEVICES

MODEL: Index and Highway Standards (Sheet)
 FILE NAME: c:\pwworkdir\benesch_projects\projects\0193076\0264S92-TREE-shh-Index.dgn



USER NAME = jworthington	DESIGNED - A.GIBSON	REVISED -
	DRAWN - J. WORTHINGTON	REVISED -
PLOT SCALE = \$SCALE\$	CHECKED - J. TARDY	REVISED -
PLOT DATE = 3/20/2024	DATE - 3/22/2024	REVISED -

STATE OF ILLINOIS
DEPARTMENT OF TRANSPORTATION

INDEX OF SHEETS AND HIGHWAY STANDARDS

SCALE: 1"=1'-0" SHEET 1 OF 2 SHEETS STA. TO STA.

F.A.I. RTE.	SECTION	COUNTY	TOTAL SHEETS	SHEET NO.
*	((201-3) (4-1,5))TR	WINNEBAGO	23	2
CONTRACT NO. 64S92				
			ILLINOIS	FED. AID PROJECT

*FAI ROUTE 39 (I-39) & FAP 301 (US 20)

GENERAL NOTES

THE FOLLOWING LISTED UTILITIES LOCATED WITHIN THE PROJECT LIMITS OR IMMEDIATELY ADJACENT TO THE PROJECT CONSTRUCTION LIMITS ARE MEMBERS OF JULIE:

CARL DONAHUE	ATT COMMUNICATIONS	TELEPHONE	630-552-4677
MICHAEL NORRIS	BUCKEYE PARTNERS, LP	PETROLEUM	219-313-5321
VINCENT MAZZAFERRO	COMED	ELECTRIC	779-231-1027
JASON KLEIN	FRONTIER	TELEPHONE	309-853-6297
HECTOR GARCIA	ATT	TELEPHONE	630-573-5465
CHIP PARROT	NICOR GAS CO.	GAS	630-388-3019
KYLE GRUHN	FOUR RIVERS SANITATION	SEWER	815-387-7400
TOM YUCCAS	COMCAST CABLE	CATV	815-509-8653
DEVEN BARNHILL	WINDSTREAM	TELEPHONE	815-592-3395
STEVE STRASSER	V. CHERRY VALLEY	WATER & SEWER	815-332-3441
DAN GALOVICH	ALDRIDGE ELECTRIC	COMMUNICATIONS	815-467-0428
MARK THOMPSON	NATURAL GAS PIPELINE	PIPELINE	
LANCE SANDY	iFIBER	FIBER	815-753-5798
BOB SULLIVAN	G4S	COMMUNICATIONS	630-272-9245

IDOT IS NOT A MEMBER OF JULIE. IF YOU ARE NEAR ANY OVERHEAD LIGHTING, INTERSECTION LIGHTING OR TRAFFIC SIGNALS, CONTACT THE IDOT TRAFFIC OFFICE AT 815-284-5469 AT LEAST 48 HOURS PRIOR TO WORK.

THE CONTRACTOR SHALL TAKE PRECAUTIONS TO MINIMIZE INCIDENTAL EXCAVATION OF EARTH DURING TREE REMOVALS. ANY INCIDENTAL EARTH REMOVED DURING TREE REMOVAL SHALL REMAIN ON SITE, AND BE UTILIZED TO FILL THE EXISTING VOID LEFT BY THE TREE REMOVAL.

PER SPECIAL PROVISION FOR COMPLETION DATE PLUS WORKING DAYS, ALL TREES SHALL BE FELLED AND REMOVED BETWEEN THE DATES OF OCTOBER 1, 2024 AND OCTOBER 15, 2024 EXCLUSIVELY.

FOR TREE TRUNK DIAMETERS MARKED AS "UNK", DIAMETER WAS UNKNOWN. ASSUMED 10 UNIT DIAMETER FOR QUANTITY CALCULATIONS.

CONTRACT 64B13 AND 64R71 WILL BE ACTIVE CONSTRUCTION PROJECTS. TOPOGRAPHIC CONDITIONS MAY VARY FROM THE PLANS.

CONTRACTOR SHALL BE FAMILIAR WITH THE LOCAL JURISDICTION NOISE ORDINANCES, AND PERFORM THE TREE REMOVAL WORK WITHIN THE RESTRICTIONS OF THE LOCAL NOISE ORDINANCES. CONTRACTOR SHALL BE RESPONSIBLE FOR OBTAINING ANY PERMIT OR PERMISSION FROM THE LOCAL JURISDICTIONS TO PERFORM ANY TREE REMOVAL WORK OUTSIDE THE RESTRICTIONS OF THE LOCAL NOISE ORDINANCES.

COMMITMENTS

TREES THREE (3) INCHES OR GREATER IN DIAMETER AT BREAST HEIGHT WILL BE CLEARED FROM OCTOBER 1ST THROUGH OCTOBER 15TH. THE US FISH AND WILDLIFE SERVICE CONCURRED WITH OUR DETERMINATION AND DATE RESTRICTION ON TREE CLEARING ON 3/21/2023.

RUSTY PATCHED BUMBLE BEE: THE PROJECT SPONSOR WILL BEGIN MOWING AND CONTINUE TO MOW WITHIN THE LIMITS OF THE PROPOSED IMPROVEMENT FROM MARCH 15 - OCTOBER 15. THE MOWING SHOULD BE KEPT AT A HEIGHT OF 6". THIS COMMITMENT WILL BE ADHERED TO UNTIL THE END OF CONSTRUCTION. TREE REMOVAL WILL ONLY OCCUR FROM OCTOBER 1 - OCTOBER 15TH OF ANY GIVEN YEAR TO PROTECT THE QUEENS BEFORE THEY RETURN TO THEIR OVER-WINDERING BURROWS.

CLASS 4A AND 5 SEED SHALL BE USED ON ALL BACK SLOPE AND FORE SLOPES ON THE PROJECT. PLEASE REFER TO SPECIAL PROVISION FOR ADDITIONAL INFORMATION AND FOLLOW THE SPECS IN SECTION 250 OF THE MANUAL FOR ANY TEMPORARY DISTURBANCE WITHIN THE PROJECT LIMITS.

MODEL: General Notes (Sheet)
FILE NAME: c:\pwworkdir\benesch_projects\projects\0193076\0264S92-TREE-shh-GeneralNotes.dgn



USER NAME = jworthington
PLOT SCALE = \$SCALE\$
PLOT DATE = 3/20/2024

DESIGNED - A.GIBSON	REVISED -
DRAWN - J. WORTHINGTON	REVISED -
CHECKED - J. TARDY	REVISED -
DATE - 3/22/2024	REVISED -

**STATE OF ILLINOIS
DEPARTMENT OF TRANSPORTATION**

GENERAL NOTES

SCALE: SHEET 2 OF 2 SHEETS STA. TO STA.

F.A.I RTE.	SECTION	COUNTY	TOTAL SHEETS	SHEET NO.
*	((201-3) (4-1,5))TR	WINNEBAGO	23	3
CONTRACT NO. 64S92				
		ILLINOIS	FED. AID PROJECT	

*FAI ROUTE 39 (I-39) & FAP 301 (US 20)

MODEL: SOQ (Sheet)
 FILE NAME: c:\pwworkdir\benesch_projects\projects\0193076\0264S92\FREE-5ht-SOQ.dgn

CODE NO.	ITEM DESCRIPTION	UNIT	TOTAL QUANTITY	0031
				100% STATE
20100110	TREE REMOVAL (6 TO 15 UNITS DIAMETER)	UNIT	1,671	1,671
20100210	TREE REMOVAL (OVER 15 UNITS DIAMETER)	UNIT	734	734
20100500	TREE REMOVAL, ACRES	ACRE	14.00	14.00
25000312	SEEDING, CLASS 4A	ACRE	0.50	0.50
25000320	SEEDING, CLASS 5	ACRE	0.50	0.50
25000750	MOWING	ACRE	34.00	34.00
25100125	MULCH, METHOD 3	ACRE	0.50	0.50
28000400	PERIMETER EROSION BARRIER	FOOT	748	748
67100100	MOBILIZATION	L SUM	1	1
70100450	TRAFFIC CONTROL AND PROTECTION, STANDARD 701201	L SUM	1	1
70100825	TRAFFIC CONTROL AND PROTECTION, STANDARD 701456	L SUM	1	1
Z0048665	RAILROAD PROTECTIVE LIABILITY INSURANCE	L SUM	1	1



USER NAME = jworthington
 PLOT SCALE = \$SCALE\$
 PLOT DATE = 3/20/2024

DESIGNED - A.GIBSON
 DRAWN - J.WORTHINGTON
 CHECKED - J.TARDY
 DATE - 3/22/2024

REVISED -
 REVISED -
 REVISED -
 REVISED -

**STATE OF ILLINOIS
 DEPARTMENT OF TRANSPORTATION**

SUMMARY OF QUANTITIES

SCALE: 1"=1'-0" SHEET 1 OF 1 SHEETS STA. TO STA.

F.A.I RTE.	SECTION	COUNTY	TOTAL SHEETS	SHEET NO.
*	((201-3) (4-1,5))TR	WINNEBAGO	23	4
			CONTRACT NO. 64S92	
		ILLINOIS	FED. AID PROJECT	

*FAI ROUTE 39 (I-39) & FAP 301 (US 20)

Table with 7 columns: ROAD, STA, OFFSET, LT/RT, ID, UNIT, REMARKS. Title: 20100110 TREE REMOVAL (6 TO 15 UNITS DIAMETER). Rows list various stationing points and units (e.g., PR I-39, 2656+33.78, 91.15, LT, SB I-39, 10).

Table with 7 columns: ROAD, STA, OFFSET, LT/RT, ID, UNIT, REMARKS. Title: 20100110 TREE REMOVAL (6 TO 15 UNITS DIAMETER) CONTINUED. Rows continue the stationing points (e.g., PR I-39, 2701+27.64, 99.79, LT, SB I-39, 14).

Table with 7 columns: ROAD, STA, OFFSET, LT/RT, ID, UNIT, REMARKS. Title: 20100110 TREE REMOVAL (6 TO 15 UNITS DIAMETER) CONTINUED. Rows continue the stationing points (e.g., PR I-39, 2676+31.32, 129.24, RT, I-39 NB, 8).



USER NAME = jworthington
DESIGNED - A. GIBSON
DRAWN - E. SAYRE
PLOT SCALE = SSCALE\$
PLOT DATE = 3/20/2024

REVISSED -
REVISSED -
CHECKED - J. TARDY
DATE = 3/22/2024

STATE OF ILLINOIS DEPARTMENT OF TRANSPORTATION

SCHEDULE OF QUANTITIES

SCALE: 1"=1'-0" SHEET 1 OF 4 SHEETS STA. TO STA.

Summary table with columns: F.A.I. RTE., SECTION, COUNTY, TOTAL SHEETS, SHEET NO. Values: ((201-3) (4-1.5))TR, WINNEBAGO, 23, 5.

*FAI ROUTE 39 (I-39) & FAP 301 (US 20)

MODEL: Schedules_1 [Sheet]
FILE NAME: c:\pwworkdir\benesch_projects\projects\0193076\0264592-TREE-ahh-Schedule.dgn

20100110 TREE REMOVAL (6 TO 15 UNITS DIAMETER) CONTINUED						
ROAD	STA	OFFSET	LT/RT	ID	UNIT	REMARKS
PR I-39	2701+26.77	133.32	RT	I-39 NB	6	
PR I-39	2702+02.03	140.09	RT	I-39 NB	12	
PR I-39	2702+54.40	151.01	RT	I-39 NB	8	
PR I-39	2702+66.92	132.39	RT	I-39 NB	8	
PR I-39	2703+18.25	145.84	RT	I-39 NB	6	
PR I-39	2703+63.99	128.65	RT	I-39 NB	8	
PR I-39	2704+08.56	154.37	RT	I-39 NB	8	
PR I-39	2704+16.68	134.51	RT	I-39 NB	10	
PR I-39	2704+26.29	155.83	RT	I-39 NB	8	
PR I-39	2704+35.72	137.42	RT	I-39 NB	8	
PR I-39	2704+44.37	159.05	RT	I-39 NB	8	
EX RAMP AD	59+19.62	57.49	RT	RAMP AD	9	
EX RAMP AD	59+75.60	51.64	RT	RAMP AD	12	
EX RAMP AD	59+94.71	43.80	RT	RAMP AD	14	
EX RAMP AD	60+20.51	35.57	RT	RAMP AD	14	
EX RAMP AD	60+46.10	50.26	RT	RAMP AD	12	
EX RAMP AD	60+96.18	86.41	RT	RAMP AD	10	
EX RAMP AD	61+32.37	83.69	RT	RAMP AD	10	
EX RAMP AD	61+79.70	90.48	RT	RAMP AD	12	
EX RAMP AD	61+80.71	74.71	RT	RAMP AD	6	
EX RAMP AD	62+74.91	53.91	RT	RAMP AD	7	
EX RAMP AD	63+03.54	114.82	RT	RAMP AD	13	
EX RAMP AD	63+07.78	44.55	RT	RAMP AD	7	
EX RAMP AD	63+20.02	86.87	RT	RAMP AD	9	
EX RAMP AD	63+23.18	68.26	RT	RAMP AD	6	
EX RAMP AD	63+30.73	45.91	RT	RAMP AD	6	
EX RAMP AD	63+42.78	42.40	RT	RAMP AD	7	
EX RAMP AD	64+78.19	36.86	RT	RAMP AD	8	
EX RAMP DB	20+85.64	37.85	RT	RAMP DB	10	
EX RAMP DB	20+91.83	37.28	RT	RAMP DB	10	
EX RAMP DB	21+71.19	36.16	RT	RAMP DB	10	
EX RAMP DB	23+09.21	37.45	RT	RAMP DB	10	
EX RAMP DB	26+81.15	69.15	RT	RAMP DB	8	
EX RAMP DB	32+96.42	60.89	RT	RAMP DB	6	
EX RAMP DB	36+91.26	100.04	RT	RAMP DB	6	
EX RAMP DB	36+95.96	109.79	RT	RAMP DB	6	
EX RAMP DB	37+51.94	82.51	RT	RAMP DB	8	
EX RAMP DB	41+03.18	76.14	RT	RAMP DB	6	
EX RAMP DB	41+98.18	61.53	RT	RAMP DB	7	
SUBTOTAL					339	
GRAND TOTAL					1671	

20100210 TREE REMOVAL (OVER 15 UNITS DIAMETER)						
ROAD	STA	OFFSET	LT/RT	ID	UNIT	REMARKS
PR I-39	2635+68.97	109.66	LT	SB I-39	20	
PR I-39	2635+73.87	117.14	LT	SB I-39	16	
PR I-39	2637+05.51	103.10	LT	SB I-39	18	
PR I-39	2641+57.15	115.49	LT	SB I-39	20	
PR I-39	2673+56.96	91.65	LT	SB I-39	19	
PR I-39	2674+03.31	99.84	LT	SB I-39	20	
PR I-39	2674+62.24	89.13	LT	SB I-39	20	
PR I-39	2676+87.80	68.76	LT	SB I-39	16	
PR I-39	2677+15.92	81.75	LT	SB I-39	16	
PR I-39	2689+07.59	90.14	LT	SB I-39	18	
PR I-39	2689+45.66	91.78	LT	SB I-39	16	
PR I-39	2693+43.18	121.57	LT	SB I-39	18	
PR I-39	2693+46.24	80.74	LT	SB I-39	32	
PR I-39	2693+72.36	118.77	LT	SB I-39	16	
PR I-39	2693+79.38	117.00	LT	SB I-39	16	
PR I-39	2694+04.56	98.82	LT	SB I-39	30	
PR I-39	2699+83.73	111.08	LT	SB I-39	18	
PR I-39	2704+63.21	114.95	LT	SB I-39	24	
PR I-39	2704+87.83	119.37	LT	SB I-39	18	
PR I-39	2705+22.96	116.07	LT	SB I-39	36	
PR I-39	2705+27.49	115.10	LT	SB I-39	28	
PR I-39	2662+03.38	128.83	RT	NB I-39	30	
PR I-39	2663+39.19	104.23	RT	NB I-39	28	
PR I-39	2665+97.24	165.30	RT	NB I-39	23	
PR I-39	2666+76.58	132.39	RT	NB I-39	30	
PR I-39	2673+90.61	135.25	RT	NB I-39	18	
PR I-39	2677+43.47	164.01	RT	NB I-39	16	
PR I-39	2677+45.63	120.43	RT	NB I-39	16	
PR I-39	2692+29.63	135.32	RT	NB I-39	24	
PR I-39	2694+72.49	134.95	RT	NB I-39	24	
PR I-39	2695+69.64	137.89	RT	NB I-39	24	
PR I-39	2696+62.27	138.74	RT	NB I-39	18	
PR I-39	2698+89.25	135.15	RT	NB I-39	18	
PR I-39	2702+94.27	156.814	RT	NB I-39	30	
GRAND TOTAL					734	

MODEL: Schedules 2 [Sheet]
 FILE NAME: c:\paword\benesch_projects\projects\0193076\0264S92-TREE-shh-Schedule.dgn



USER NAME = agibson
 PLOT SCALE = SSCALE\$
 PLOT DATE = 3/22/2024

DESIGNED - A. GIBSON
 DRAWN - E. SAYRE
 CHECKED - J. TARDY
 DATE - 3/22/2024

REVISED -
 REVISED -
 REVISED -
 REVISED -

**STATE OF ILLINOIS
 DEPARTMENT OF TRANSPORTATION**

SCHEDULE OF QUANTITIES

SCALE: 1"=1'-0" SHEET 2 OF 4 SHEETS STA. TO STA.

F.A.I. RTE.	SECTION	COUNTY	TOTAL SHEETS	SHEET NO.
*	((201-3) (4-1.5))TR	WINNEBAGO	23	6
CONTRACT NO. 64S92				
ILLINOIS FED. AID PROJECT				

*FAI ROUTE 39 (I-39) & FAP 301 (US 20)

20100500 TREE REMOVAL, ACRES							
ROAD	STA	OFFSET	STA	OFFSET	ID	ACRE	REMARKS
PR I-39	2628+86.61	94.80	2635+41.52	137.61	SB I-39	0.54	
PR I-39	2635+88.87	138.33	2638+12.11	133.7	SB I-39	0.11	
PR I-39	2638+60.98	135.35	2639+85.46	134.07	SB I-39	0.05	
PR I-39	2642+15.95	137.14	2642+88.75	139.44	SB I-39	0.03	
PR I-39	2643+55.06	76.54	2644+28.41	90.86	SB I-39	0.07	
PR I-39	2644+63.15	79.57	2647+57.82	64.78	SB I-39	0.45	
PR I-39	2648+49.26	158.69	2652+78.46	83.61	SB I-39	0.72	
PR I-39	2651+74.10	235.11	2656+92.49	151.26	SB I-39	0.73	
PR I-39	2663+71.21	130.52	2664+61.21	130.51	SB I-39	0.07	
PR I-39	2669+59.50	98.72	2671+14.98	117.39	SB I-39	0.15	
PR I-39	2671+62.71	139.51	2673+09.59	133.89	SB I-39	0.01	
PR I-39	2673+46.35	132.46	2673+69.10	131.62	SB I-39	0.002	
PR I-39	2674+17.66	130.49	2674+58.50	130.28	SB I-39	0.005	
PR I-39	2675+11.00	130.13	2676+03.50	130.41	SB I-39	0.03	
PR I-39	2677+60.26	129.60	2677+92.52	129.35	SB I-39	0.002	
PR I-39	2678+12.91	131.05	2681+88.04	50.96	SB I-39	0.39	
PR I-39	2683+47.05	130.35	2683+71.59	122.1	SB I-39	0.01	
PR I-39	2687+68.03	131.70	2688+12.39	130.31	SB I-39	0.01	
PR I-39	2702+95.32	147.01	2704+31.27	152.72	SB I-39	0.02	
PR I-39	2707+50.26	138.88	2709+48.62	76.71	SB I-39	0.21	
PR I-39	2632+55.26	115.07	2641+86.56	161.46	NB I-39	0.70	
PR I-39	2641+86.56	161.46	2644+00.00	163.38	NB I-39	0.26	
PR I-39	2642+92.02	163.16	26+44.00	175	NB I-39	0.01	
PR I-39	2643+99.51	174.94	2648+36.56	165.16	NB I-39	0.71	
PR I-39	2644+00.00	175.00	2648+49.33	199.6	NB I-39	0.21	
PR I-39	2649+39.91	97.71	2652+73.97	133.83	NB I-39	0.43	
PR I-39	2649+67.96	179.97	2650+13.79	174.18	NB I-39	0.02	
PR I-39	2650+70.93	165.97	2651+96.10	166.4	NB I-39	0.01	
PR I-39	2652+74.21	166.66	2653+22.19	166.82	NB I-39	0.02	
PR I-39	2653+77.35	166.49	2654+35.18	146.03	NB I-39	0.03	
PR I-39	2654+51.02	166.21	2656+07.98	166.87	NB I-39	0.06	
PR I-39	2666+11.57	149.45	2666+63.98	169.51	NB I-39	0.02	
PR I-39	2666+87.79	168.87	2670+79.37	168.56	NB I-39	0.16	
PR I-39	2670+92.02	168.17	2674+90.44	169.63	NB I-39	0.22	
PR I-39	2681+08.35	124.25	2685+97.37	168.33	NB I-39	0.39	
PR I-39	2687+92.30	169.70	2688+53.59	119.26	NB I-39	0.19	
PR I-39	2702+79.55	165.61	2703+96.80	168.43	NB I-39	0.03	
PR I-39	2704+94.63	167.75	2706+31.35	124.09	NB I-39	0.14	
PR I-39	2707+21.18	123.21	2710+18.42	137.43	NB I-39	0.23	
PR I-39	2710+18.42	137.43	2716+26.90	307.6	NB I-39	0.71	
EX RAMP AD	56+92.40	137.59	62+66.81	132.75	RAMP AD	0.70	
EX RAMP AD	59+40.17	46.18	59+71.40	38.15	RAMP AD	0.01	
EX RAMP AD	63+73.70	113.71	64+67.87	108.21	RAMP AD	0.07	
EX RAMP AD	66+17.66	107.34	74+14.34	85.57	RAMP AD	0.83	
SUBTOTAL						10.00	

20100500 TREE REMOVAL, ACRES CONTINUED							
ROAD	STA	OFFSET	STA	OFFSET	ID	ACRE	REMARKS
EX RAMP AD	74+23.18	134.23	75+28.94	156.36	RAMP AD	0.06	
EX RAMP DB	17+47.61	108.37	24+56.01	146.14	RAMP DB	0.76	
EX RAMP DB	25+36.35	147.92	27+20.16	105.94	RAMP DB	0.13	
EX RAMP DB	30+60.86	106.99	36+29.51	120.69	RAMP DB	0.48	
EX RAMP DB	36+32.93	116.62	47+58.39	45.72	RAMP DB	1.08	
EX RAMP DB	50+01.04	79.01	53+09.67	84.71	RAMP DB	0.12	
EX RAMP DB	53+43.67	85.33	58+25.58	89.27	RAMP DB	0.16	
EX RAMP DB	59+56.85	95.98	64+67.94	97.51	RAMP DB	0.16	
EX RAMP DB	72+37.43	70.66	73+11.25	69.04	RAMP DB	0.03	
EX RAMP DB	73+21.06	68.55	74+51.38	69.83	RAMP DB	0.07	
EX RAMP DB	75+14.51	74.72	77+61.67	61.87	RAMP DB	0.17	
EX RAMP DB	77+72.08	93.95	81+24.20	73.11	RAMP DB	0.18	
SUBTOTAL						3.25	
CN AND UP RAILROAD							
ROAD	STA	OFFSET	STA	OFFSET	ID	ACRE	REMARKS
PR I-39	2648+40.96	70.38	2648+90.06	48.72	CN RAILROAD	0.05	
PR I-39	2680+16.69	155.00	2681+50.18	145	UP RAILROAD	0.26	
PR I-39	2682+31.33	138.95	2683+47.05	130.35	UP RAILROAD	0.10	
PR I-39	2648+99.54	119.42	2649+67.96	179.97	CN RAILROAD	0.09	
PR I-39	2684+29.46	95.59	2686+57.87	169.62	UP RAILROAD	0.12	
PR I-39	2686+81.07	102.16	2687+92.30	169.7	UP RAILROAD	0.06	
SUBTOTAL						0.75	
GRAND TOTAL						14.00	

MODEL: Schedules 3 [Sheet]
FILE NAME: c:\p\word\benesch_projects\projects\0193076\0264S92-TREE-shh-Schedule.dgn



USER NAME = agibson
PLOT SCALE = \$SSCALE\$
PLOT DATE = 3/22/2024

DESIGNED - A. GIBSON
DRAWN - E. SAYRE
CHECKED - J. TARDY
DATE - 3/22/2024

REVISED -
REVISED -
REVISED -
REVISED -

STATE OF ILLINOIS
DEPARTMENT OF TRANSPORTATION

SCHEDULE OF QUANTITIES

SCALE: 1"=1'-0" SHEET 3 OF 4 SHEETS STA. TO STA.

F.A.I RTE.	SECTION	COUNTY	TOTAL SHEETS	SHEET NO.
*	((201-3) (4-1.5)TR	WINNEBAGO	23	7
CONTRACT NO. 64S92				
ILLINOIS		FED. AID PROJECT		

*FAI ROUTE 39 (I-39) & FAP 301 (US 20)

28000400 PERIMETER EROSION BARRIER							
ROAD	STA	OFFSET	STA	OFFSET	ID	FOOT	REMARKS
PR I-39	2678+00.27	130.4	2680+51.34	155	UP RAILROAD	218	
PR I-39	2680+51.34	155	2681+50.18	145	UP RAILROAD	134	
PR I-39	2682+31.33	139	2683+69.60	130.38	UP RAILROAD	139	
PR I-39	2685+17.17	169.5	2686+57.87	169.62	UP RAILROAD	141	
PR I-39	1687+39.20	169.7	2688+55.81	169.7	UP RAILROAD	116	
GRAND TOTAL						748	

25000312 SEEDING, CLASS 4A							
ROAD	STA	OFFSET	STA	OFFSET	ID	ACRE	REMARKS
PR I-39	2680+16.69	155	2682+65.02	54.94	UP RAILROAD	0.26	
PR I-39	2682+31.33	138.95	2683+71.59	122.1	UP RAILROAD	0.1	
PR I-39	2684+29.46	95.59	2685+97.37	168.33	UP RAILROAD	0.12	
PR I-39	2686+81.07	102.16	2687+92.30	169.7	UP RAILROAD	0.06	
GRAND TOTAL						0.50	

25000750 MOWING							
ROAD	STA	OFFSET	STA	OFFSET	ID	ACRE	REMARKS
PR I-39	2628+86.61	62.5 LT	2647+76.55	44.4 LT	SB I-39	2.41	
PR I-39	2632+56.00	66.0 RT	2648+19.49	72.5 RT	NB I-39	1.657	
PR I-39	2648+92.01	41.3 LT	2656+90.78	39.9 LT	SB I-39	0.885	
PR I-39	2649+33.08	76.6 RT	2656+92.21	75.3 RT	NB I-39	1.03	
PR I-39	2662+49.69	42.7 LT	2682+08.27	38.7 LT	SB I-39	2.982	
PR I-39	2661+88.21	82.4 RT	2683+96.28	75.5 RT	NB I-39	3.799	
PR I-39	2685+00.95	36.5 LT	2709+48.61	76.7 LT	SB I-39	5.749	
PR I-39	2686+38.02	76.3 RT	2716+45.85	232.6 RT	NB I-39	4.515	
EX RAMP AD	57+36.87	10.5 RT	75+29.32	10.8 RT	RAMP AD	3.088	
EX RAMP DB	17+63.16	12.1 RT	27+26.18	16.2 RT	RAMP DB	1.555	
EX RAMP DB	30+67.46	20.3 RT	47+62.89	23.3 RT	RAMP DB	2.644	
EX RAMP DB	49+63.24	12.2 RT	64+86.91	28.2 RT	RAMP DB	2.512	
EX RAMP DB	72+36.35	24.3 RT	81+23.96	19.5 RT	RAMP DB	1.023	
GRAND TOTAL						34.00	

25000320 SEEDING, CLASS 5							
ROAD	STA	OFFSET	STA	OFFSET	ID	ACRE	REMARKS
PR I-39	2680+16.69	155	2682+65.02	54.94	UP RAILROAD	0.26	
PR I-39	2682+31.33	138.95	2683+71.59	122.1	UP RAILROAD	0.1	
PR I-39	2684+29.46	95.59	2685+97.37	168.3	UP RAILROAD	0.12	
PR I-39	2686+81.07	102.16	2687+92.30	169.7	UP RAILROAD	0.06	
GRAND TOTAL						0.50	

25100125 MULCH, METHOD 3							
ROAD	STA	OFFSET	STA	OFFSET	ID	ACRE	REMARKS
PR I-39	2680+16.69	155	2682+65.02	54.94	UP RAILROAD	0.26	
PR I-39	2682+31.33	138.95	2683+71.59	122.1	UP RAILROAD	0.1	
PR I-39	2684+29.46	95.59	2685+97.37	168.33	UP RAILROAD	0.12	
PR I-39	2686+81.07	102.16	2687+92.30	169.7	UP RAILROAD	0.06	
GRAND TOTAL						0.50	

MODEL: Schedules 4 [Sheet]
 FILE NAME: c:\paword\benesch_projects\projects\0193076\0264S92-TREE-shh-Schedule.dgn



USER NAME = agibson	DESIGNED - A. GIBSON	REVISED -
	DRAWN - E. SAYRE	REVISED -
PLOT SCALE = \$SSCALE\$	CHECKED - J. TARDY	REVISED -
PLOT DATE = 3/22/2024	DATE - 3/22/2024	REVISED -

STATE OF ILLINOIS
DEPARTMENT OF TRANSPORTATION

SCHEDULE OF QUANTITIES

SCALE: 1"=1'-0" SHEET 4 OF 4 SHEETS STA. TO STA.

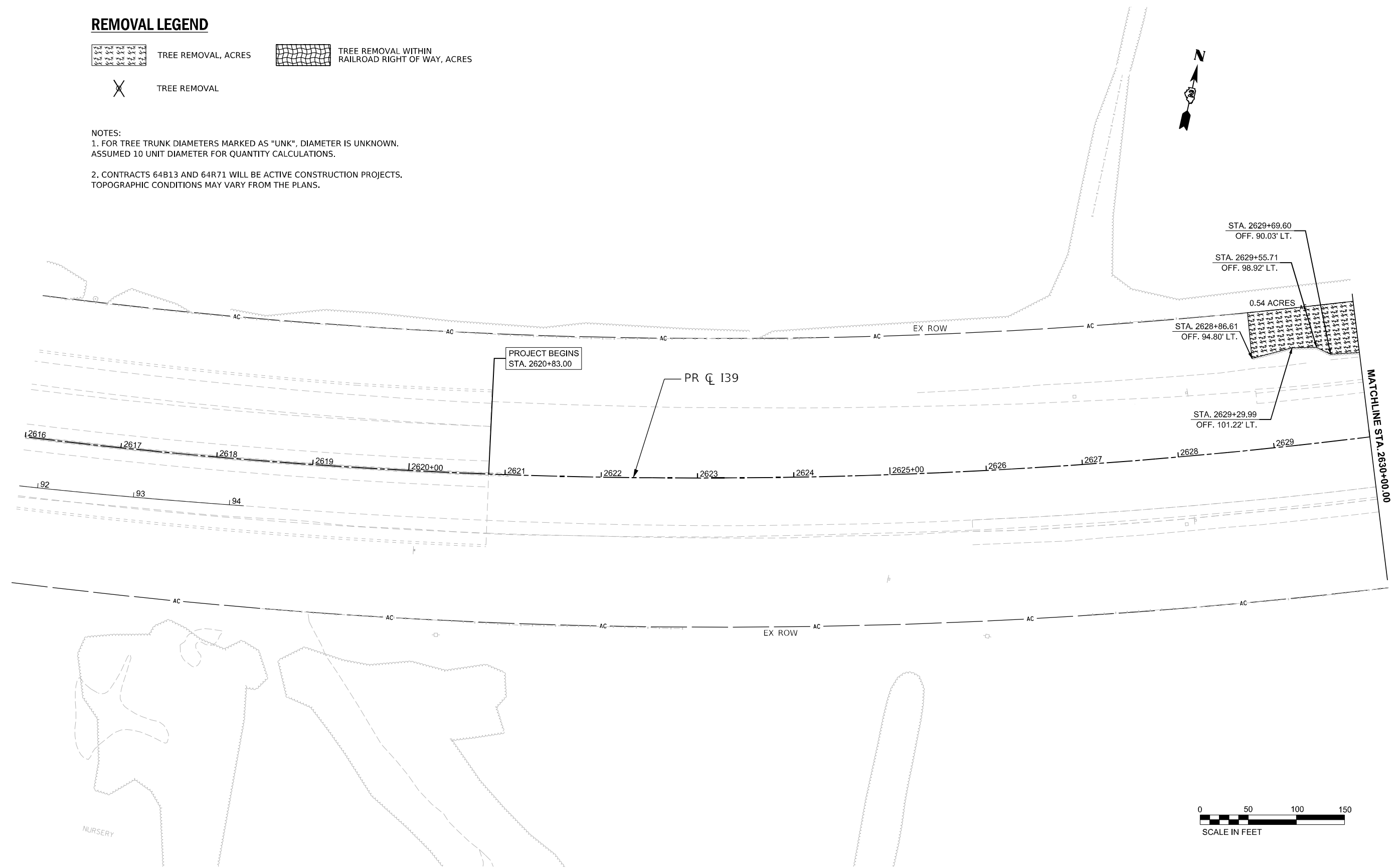
F.A.I. RTE.	SECTION	COUNTY	TOTAL SHEETS	SHEET NO.
*	((201-3) (4-1,5))TR	WINNEBAGO	23	8
CONTRACT NO. 64S92				
			ILLINOIS	FED. AID PROJECT

*FAI ROUTE 39 (I-39) & FAP 301 (US 20)

REMOVAL LEGEND

-  TREE REMOVAL, ACRES
-  TREE REMOVAL WITHIN RAILROAD RIGHT OF WAY, ACRES
-  TREE REMOVAL

NOTES:
 1. FOR TREE TRUNK DIAMETERS MARKED AS "UNK", DIAMETER IS UNKNOWN. ASSUMED 10 UNIT DIAMETER FOR QUANTITY CALCULATIONS.
 2. CONTRACTS 64B13 AND 64R71 WILL BE ACTIVE CONSTRUCTION PROJECTS. TOPOGRAPHIC CONDITIONS MAY VARY FROM THE PLANS.



MODEL: PR I39 - ML Removal Sheet 01 (Sheet)
 FILE NAME: c:\pwworkdir\benesch_projects\projects\0133156\264S92-TREE-REMOVAL.dgn

USER NAME = agibson	DESIGNED - A.GIBSON	REVISED -
	DRAWN - E.SAYRE	REVISED -
PLOT SCALE = \$SCALE\$	CHECKED - J.TARDY	REVISED -
PLOT DATE = 3/22/2024	DATE - 3/22/2024	REVISED -

**STATE OF ILLINOIS
DEPARTMENT OF TRANSPORTATION**

**EXISTING ROADWAY AND REMOVAL PLANS
I-39 / US 20**

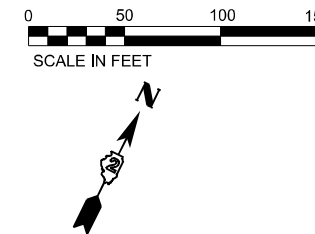
SCALE: 1"=50' SHEET 1 OF 15 SHEETS STA. 2616+00.00 TO STA. 2630+00.00

F.A.I. RTE.	SECTION	COUNTY	TOTAL SHEETS	SHEET NO.
*	((201-3) (4-1.5)TR	WINNEBAGO	23	9
CONTRACT NO. 64S92				
		ILLINOIS	FED. AID PROJECT	

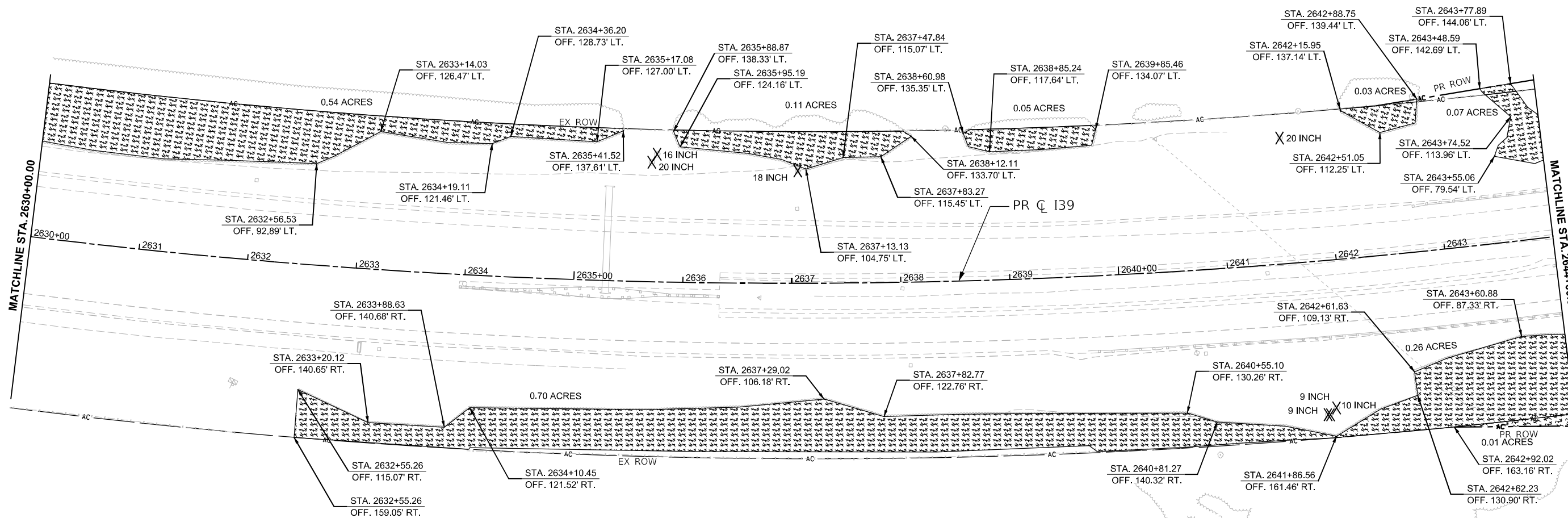
*FAI ROUTE 39 (I-39) & FAP 301 (US 20) *

REMOVAL LEGEND

-  TREE REMOVAL, ACRES
-  TREE REMOVAL WITHIN RAILROAD RIGHT OF WAY, ACRES
-  TREE REMOVAL



NOTES:
 1. FOR TREE TRUNK DIAMETERS MARKED AS "UNK", DIAMETER IS UNKNOWN. ASSUMED 10 UNIT DIAMETER FOR QUANTITY CALCULATIONS.
 2. CONTRACTS 64B13 AND 64R71 WILL BE ACTIVE CONSTRUCTION PROJECTS. TOPOGRAPHIC CONDITIONS MAY VARY FROM THE PLANS.



MODEL: PR I-39 - ML Removal Sheet 02 (Sheet)
 FILE NAME: c:\pwworkdir\benesch_projects\projects\0193156\0264S92-TREE-REMOVAL.dgn



USER NAME = agibson	DESIGNED - A.GIBSON	REVISED -
PLOT SCALE = SSCALE\$	DRAWN - E.SAYRE	REVISED -
PLOT DATE = 3/22/2024	CHECKED - J.TARDY	REVISED -
	DATE - 3/22/2024	REVISED -

**STATE OF ILLINOIS
 DEPARTMENT OF TRANSPORTATION**

**EXISTING ROADWAY AND REMOVAL PLANS
 I-39 / US 20**

SCALE: 1"=50' SHEET 2 OF 15 SHEETS STA. 2630+00.00 TO STA. 2644+00.00

F.A.I. RTE.	SECTION	COUNTY	TOTAL SHEETS	SHEET NO.
*	((201-3) (4-1.5)TR	WINNEBAGO	23	10
CONTRACT NO. 64S92				
ILLINOIS FED. AID PROJECT				

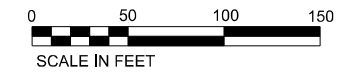
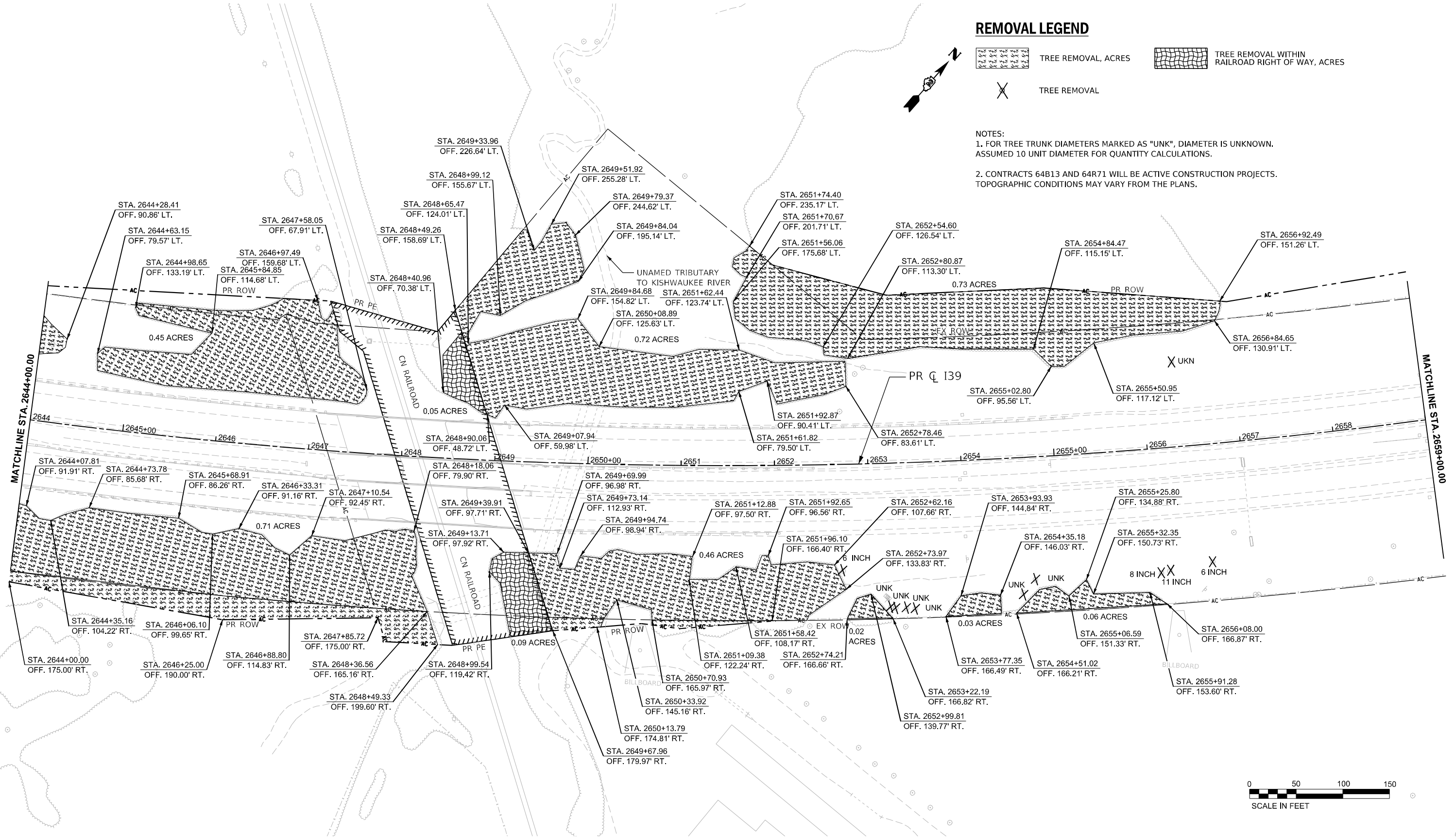
*FAI ROUTE 39 (I-39) & FAP 301 (US 20)

REMOVAL LEGEND

-  TREE REMOVAL, ACRES
-  TREE REMOVAL WITHIN RAILROAD RIGHT OF WAY, ACRES
-  TREE REMOVAL

NOTES:

1. FOR TREE TRUNK DIAMETERS MARKED AS "UNK", DIAMETER IS UNKNOWN. ASSUMED 10 UNIT DIAMETER FOR QUANTITY CALCULATIONS.
2. CONTRACTS 64B13 AND 64R71 WILL BE ACTIVE CONSTRUCTION PROJECTS. TOPOGRAPHIC CONDITIONS MAY VARY FROM THE PLANS.



MODEL: PR I39 - ML Removal Sheet 03 (Sheet)
 FILE NAME: c:\pwworkdir\benesch_projects\projects\0193156\264S92-TREE-rem-ML.dgn



USER NAME = agibson	DESIGNED - A.GIBSON	REVISED -
PLOT SCALE = SSCALE\$	DRAWN - E.SAYRE	REVISED -
PLOT DATE = 3/22/2024	CHECKED - J.TARDY	REVISED -
	DATE - 3/22/2024	REVISED -

**STATE OF ILLINOIS
DEPARTMENT OF TRANSPORTATION**

**EXISTING ROADWAY AND REMOVAL PLANS
I-39 / US 20**

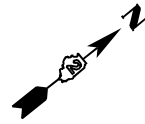
SCALE: 1"=50' SHEET 3 OF 15 SHEETS STA. 2644+00.00 TO STA. 2659+00.00

F.A.I R.T.E.	SECTION	COUNTY	TOTAL SHEETS	SHEET NO.
*	((201-3) (4-1.5)TR	WINNEBAGO	23	11
CONTRACT NO. 64S92				
ILLINOIS FED. AID PROJECT				

*FAI ROUTE 39 (I-39) & FAP 301 (US 20)

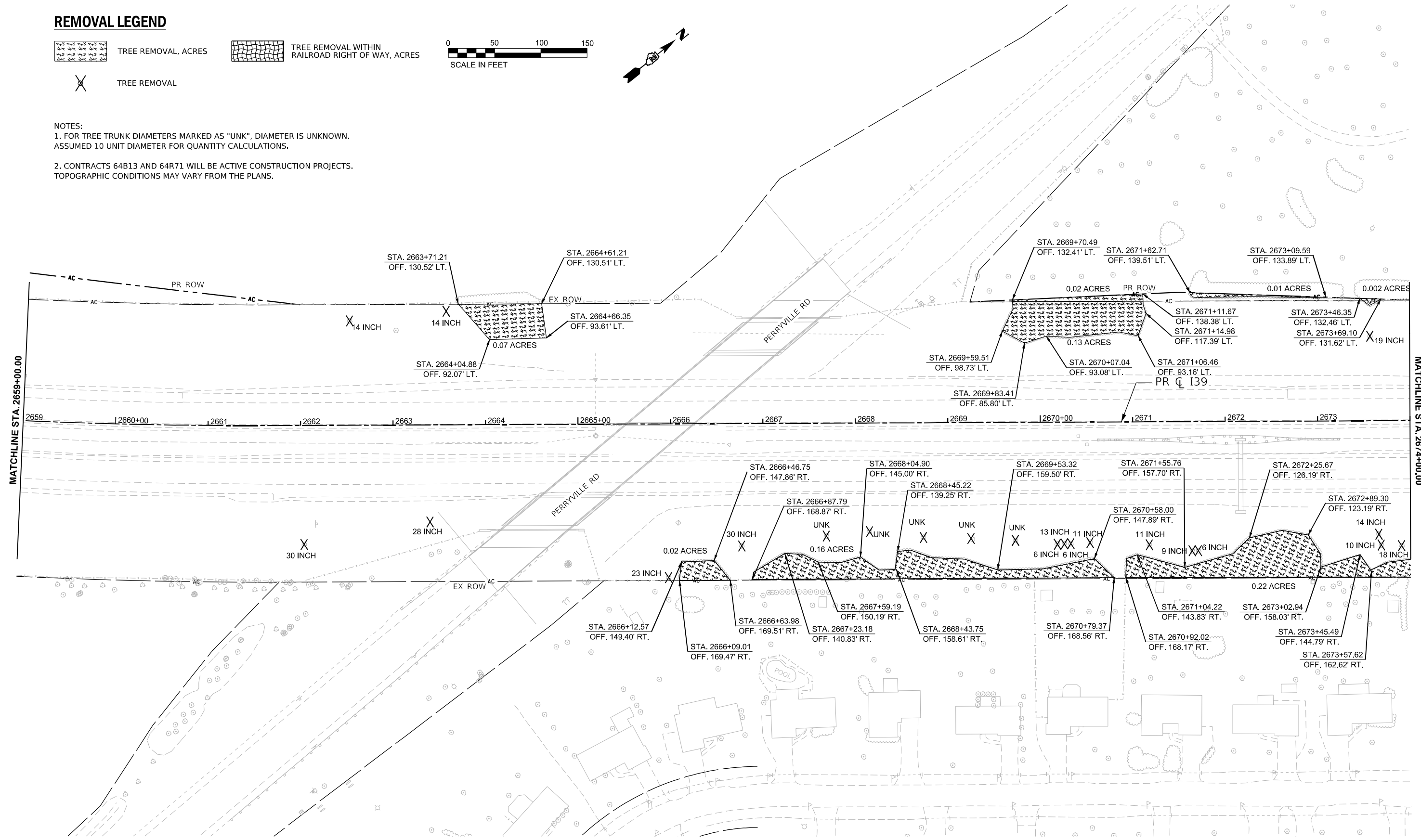
REMOVAL LEGEND

-  TREE REMOVAL, ACRES
-  TREE REMOVAL WITHIN RAILROAD RIGHT OF WAY, ACRES
-  TREE REMOVAL



NOTES:

1. FOR TREE TRUNK DIAMETERS MARKED AS "UNK", DIAMETER IS UNKNOWN, ASSUMED 10 UNIT DIAMETER FOR QUANTITY CALCULATIONS.
2. CONTRACTS 64B13 AND 64R71 WILL BE ACTIVE CONSTRUCTION PROJECTS. TOPOGRAPHIC CONDITIONS MAY VARY FROM THE PLANS.



MODEL: PR I39 - ML Removal Sheet 04 (Sheet)
FILE NAME: c:\pwworkdir\benesch_projects\projects\193156\264S92-TREE-REMOVAL.dgn



USER NAME = jworthington	DESIGNED - A.GIBSON	REVISED -
PLOT SCALE = SSCALE\$	DRAWN - E.SAYRE	REVISED -
PLOT DATE = 3/21/2024	CHECKED - J.TARDY	REVISED -
	DATE - 3/22/2024	REVISED -

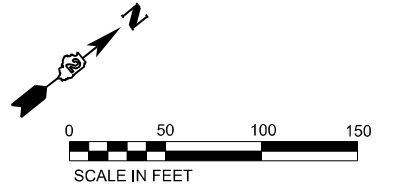
**STATE OF ILLINOIS
DEPARTMENT OF TRANSPORTATION**

**EXISTING ROADWAY AND REMOVAL PLANS
I-39 / US 20**

SCALE: 1"=50' SHEET 4 OF 15 SHEETS STA. 2659+00.00 TO STA. 2674+00.00

F.A.I. RTE.	SECTION	COUNTY	TOTAL SHEETS	SHEET NO.
*	((201-3) (4-1.5)TR	WINNEBAGO	23	12
CONTRACT NO. 64S92				
ILLINOIS FED. AID PROJECT				

*FAI ROUTE 39 (I-39) & FAP 301 (US 20)

REMOVAL LEGEND

NOTES:
 1. FOR TREE TRUNK DIAMETERS MARKED AS "UNK", DIAMETER IS UNKNOWN. ASSUMED 10 UNIT DIAMETER FOR QUANTITY CALCULATIONS.
 2. CONTRACTS 64B13 AND 64R71 WILL BE ACTIVE CONSTRUCTION PROJECTS. TOPOGRAPHIC CONDITIONS MAY VARY FROM THE PLANS.

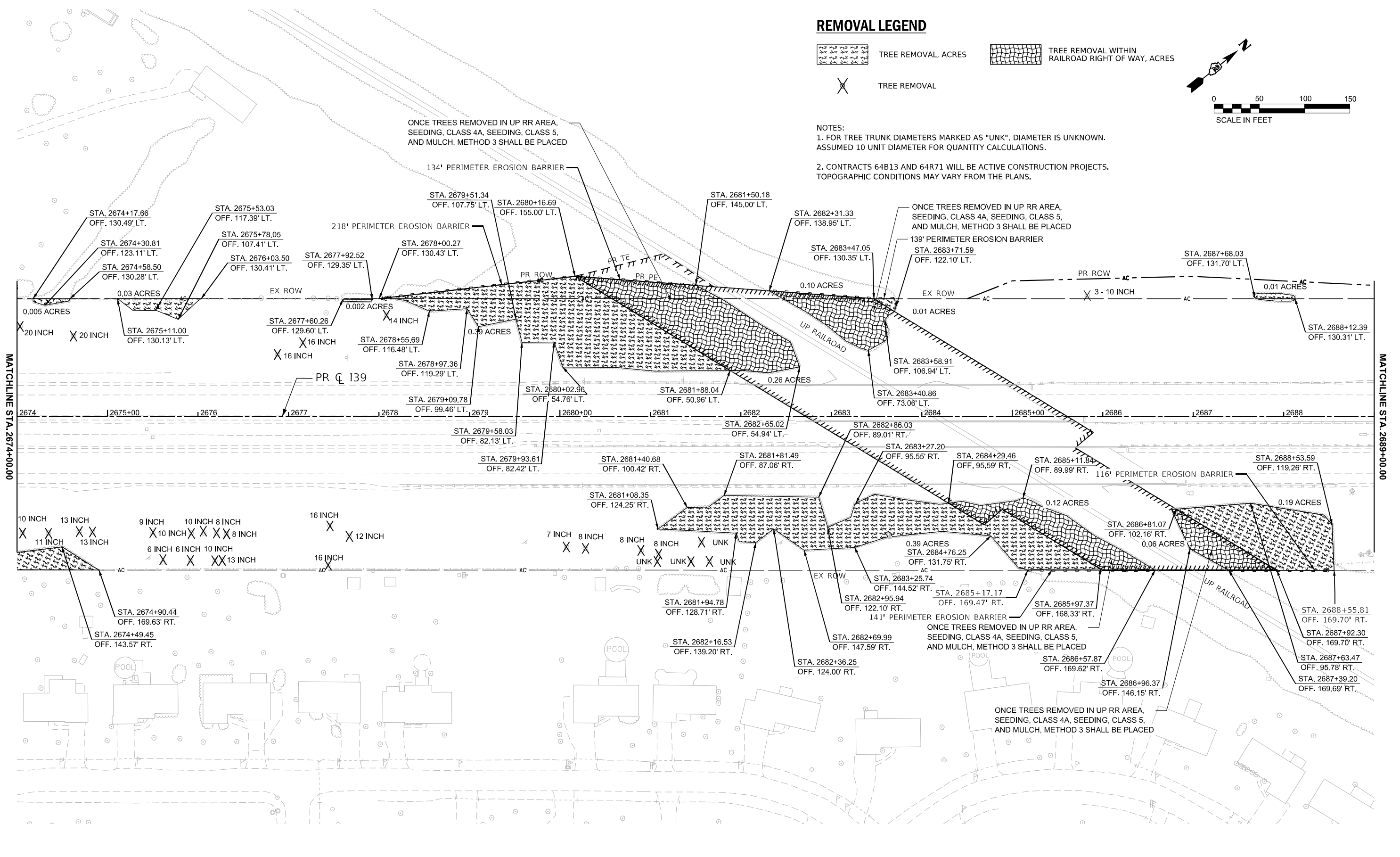
ONCE TREES REMOVED IN UP RR AREA, SEEDING, CLASS 4A, SEEDING, CLASS 5, AND MULCH, METHOD 3 SHALL BE PLACED

ONCE TREES REMOVED IN UP RR AREA, SEEDING, CLASS 4A, SEEDING, CLASS 5, AND MULCH, METHOD 3 SHALL BE PLACED

ONCE TREES REMOVED IN UP RR AREA, SEEDING, CLASS 4A, SEEDING, CLASS 5, AND MULCH, METHOD 3 SHALL BE PLACED

ONCE TREES REMOVED IN UP RR AREA, SEEDING, CLASS 4A, SEEDING, CLASS 5, AND MULCH, METHOD 3 SHALL BE PLACED

ONCE TREES REMOVED IN UP RR AREA, SEEDING, CLASS 4A, SEEDING, CLASS 5, AND MULCH, METHOD 3 SHALL BE PLACED



MODEL: PR I39 - ML Removal Sheet 05 (Sheet)
 FILE NAME: c:\pwworkdir\benesch_projects\projects\0193156\264S92-TREE-rem-ML.dgn



USER NAME =	agibson	DESIGNED -	A.GIBSON	REVISED -	
		DRAWN -	E.SAYRE	REVISED -	
PLOT SCALE =	SSCALE\$	CHECKED -	J.TARDY	REVISED -	
PLOT DATE =	3/22/2024	DATE -	3/22/2024	REVISED -	

**STATE OF ILLINOIS
 DEPARTMENT OF TRANSPORTATION**

**EXISTING ROADWAY AND REMOVAL PLANS
 I-39 / US 20**

F.A.I RTE.	SECTION	COUNTY	TOTAL SHEETS	SHEET NO.
*	((201-3) (4-1.5))TR	WINNEBAGO	23	13
				CONTRACT NO. 64S92
ILLINOIS		FED. AID PROJECT		

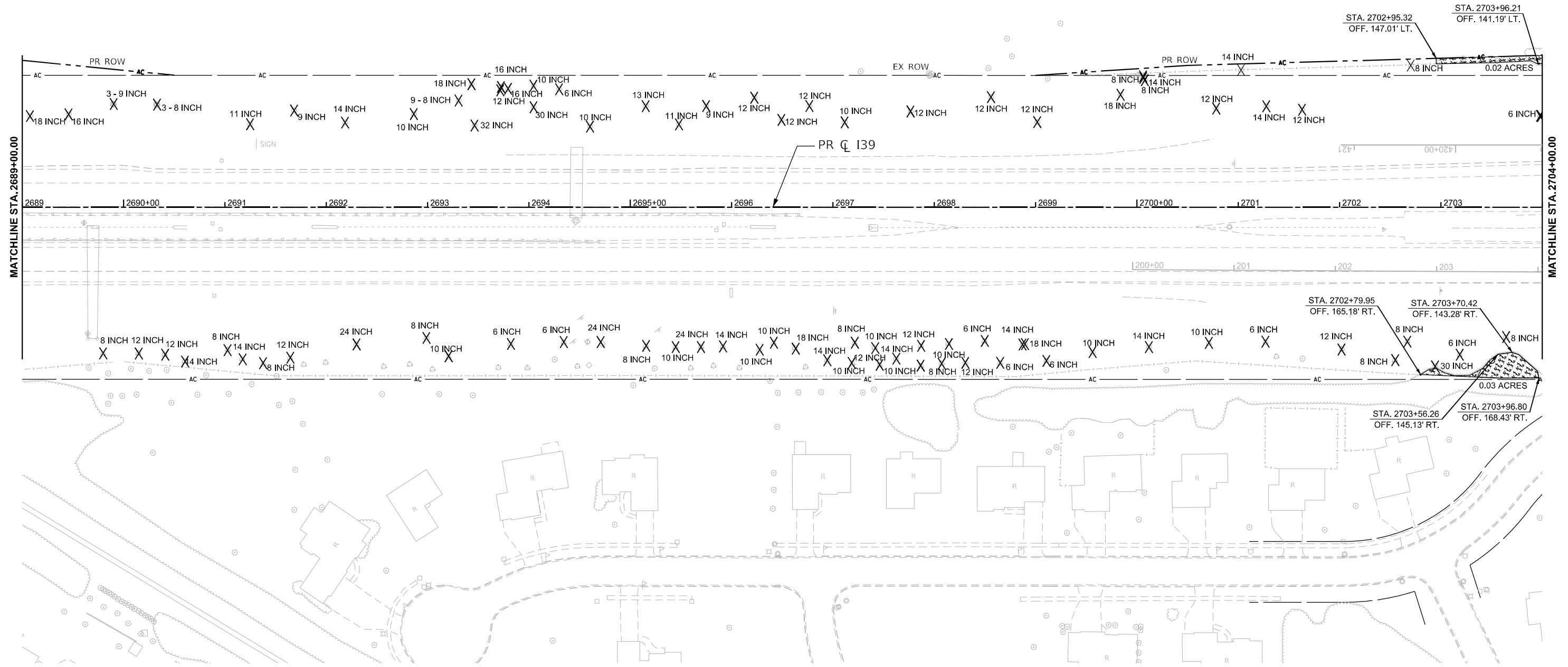
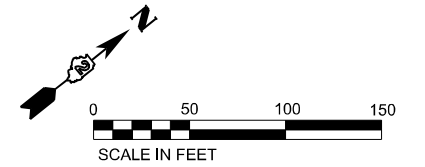
SCALE: 1"=50' SHEET 5 OF 15 SHEETS STA. 2674+00.00 TO STA. 2689+00.00

*FAI ROUTE 39 (I-39) & FAP 301 (US 20)

REMOVAL LEGEND

-  TREE REMOVAL, ACRES
-  TREE REMOVAL WITHIN RAILROAD RIGHT OF WAY, ACRES
-  TREE REMOVAL

- NOTES:
- FOR TREE TRUNK DIAMETERS MARKED AS "UNK", DIAMETER IS UNKNOWN. ASSUMED 10 UNIT DIAMETER FOR QUANTITY CALCULATIONS.
 - CONTRACTS 64B13 AND 64R71 WILL BE ACTIVE CONSTRUCTION PROJECTS. TOPOGRAPHIC CONDITIONS MAY VARY FROM THE PLANS.



MODEL: PR I39 - ML Removal Sheet 06 (Sheet)
FILE NAME: c:\pwworkdir\benesch_projects\projects\193156\264S92-TREE-REMOVAL.dgn



USER NAME = agibson	DESIGNED - A.GIBSON	REVISED -
PLOT SCALE = SSCALE\$	DRAWN - E.SAYRE	REVISED -
PLOT DATE = 3/22/2024	CHECKED - J.TARDY	REVISED -
	DATE - 3/22/2024	REVISED -

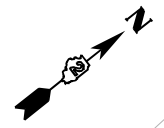
**STATE OF ILLINOIS
DEPARTMENT OF TRANSPORTATION**

**EXISTING ROADWAY AND REMOVAL PLANS
I-39 / US 20**

SCALE: 1"=50' SHEET 6 OF 15 SHEETS STA. 2689+00.00 TO STA. 2704+00.00

F.A.I. RTE.	SECTION	COUNTY	TOTAL SHEETS	SHEET NO.
*	((201-3) (4-1.5))TR	WINNEBAGO	23	14
CONTRACT NO. 64S92				
ILLINOIS FED. AID PROJECT				

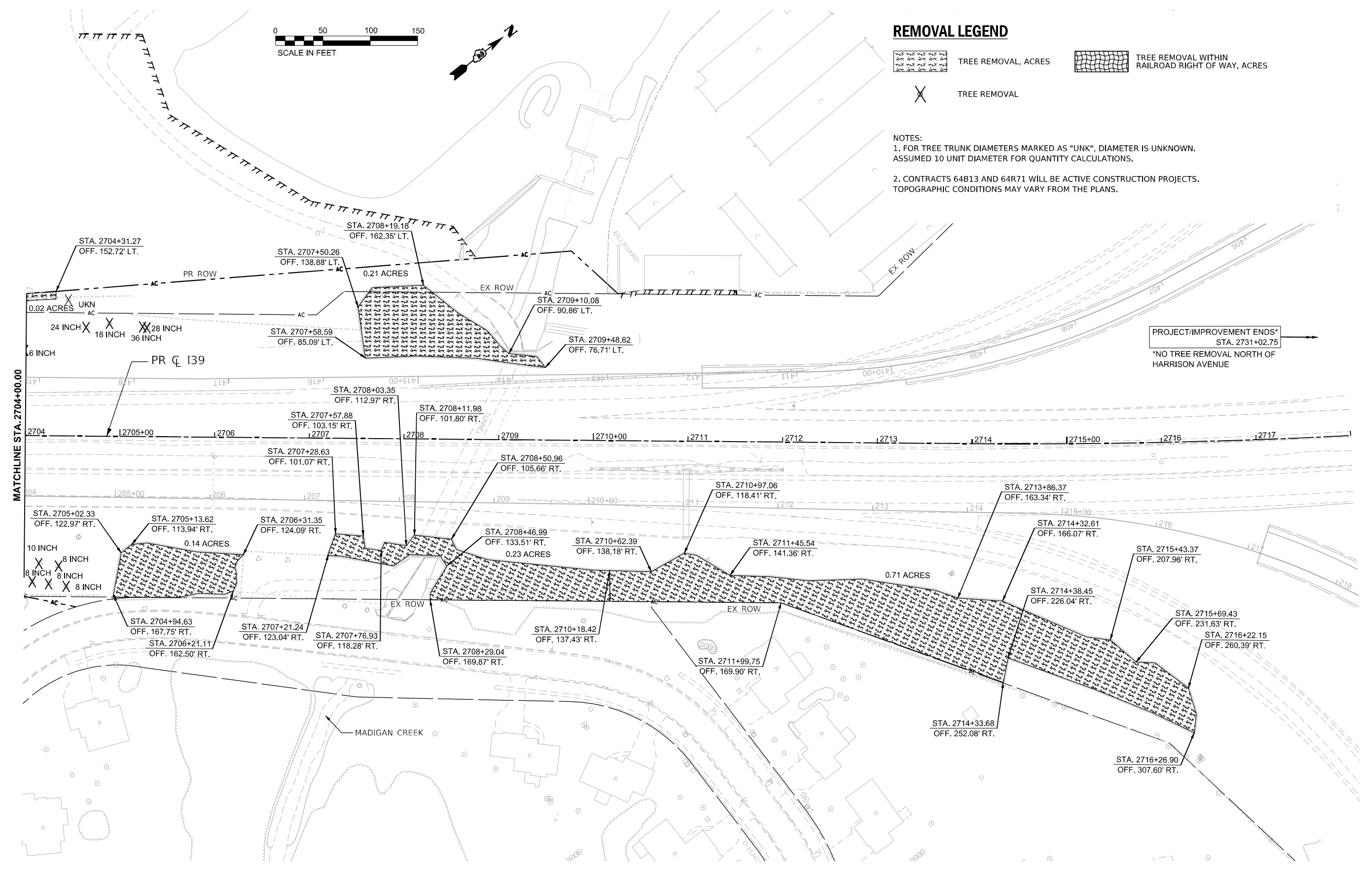
*FAI ROUTE 39 (I-39) & FAP 301 (US 20)



REMOVAL LEGEND

- TREE REMOVAL, ACRES
- TREE REMOVAL WITHIN RAILROAD RIGHT OF WAY, ACRES
- TREE REMOVAL

- NOTES:
1. FOR TREE TRUNK DIAMETERS MARKED AS "UNK", DIAMETER IS UNKNOWN. ASSUMED 10 UNIT DIAMETER FOR QUANTITY CALCULATIONS.
 2. CONTRACTS 64B13 AND 64R71 WILL BE ACTIVE CONSTRUCTION PROJECTS. TOPOGRAPHIC CONDITIONS MAY VARY FROM THE PLANS.



MODEL: PR I39 - ML Removal Sheet 07 (Sheet)
 FILE NAME: c:\pwworkdir\benesch_projects\projects\0193156\264S92-TREE-rem-ML.dgn

USER NAME = agibson	DESIGNED - A.GIBSON	REVISED -
DRAWN - E.SAYRE	REVISED -	
PLOT SCALE = \$SCALE\$	CHECKED - J.TARDY	REVISED -
PLOT DATE = 3/22/2024	DATE - 3/22/2024	REVISED -

**STATE OF ILLINOIS
DEPARTMENT OF TRANSPORTATION**


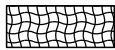

**EXISTING ROADWAY AND REMOVAL PLANS
I-39 / US 20**

SCALE: 1"=50' SHEET 7 OF 15 SHEETS STA. 2704+00.00 TO STA. 2718+00.00

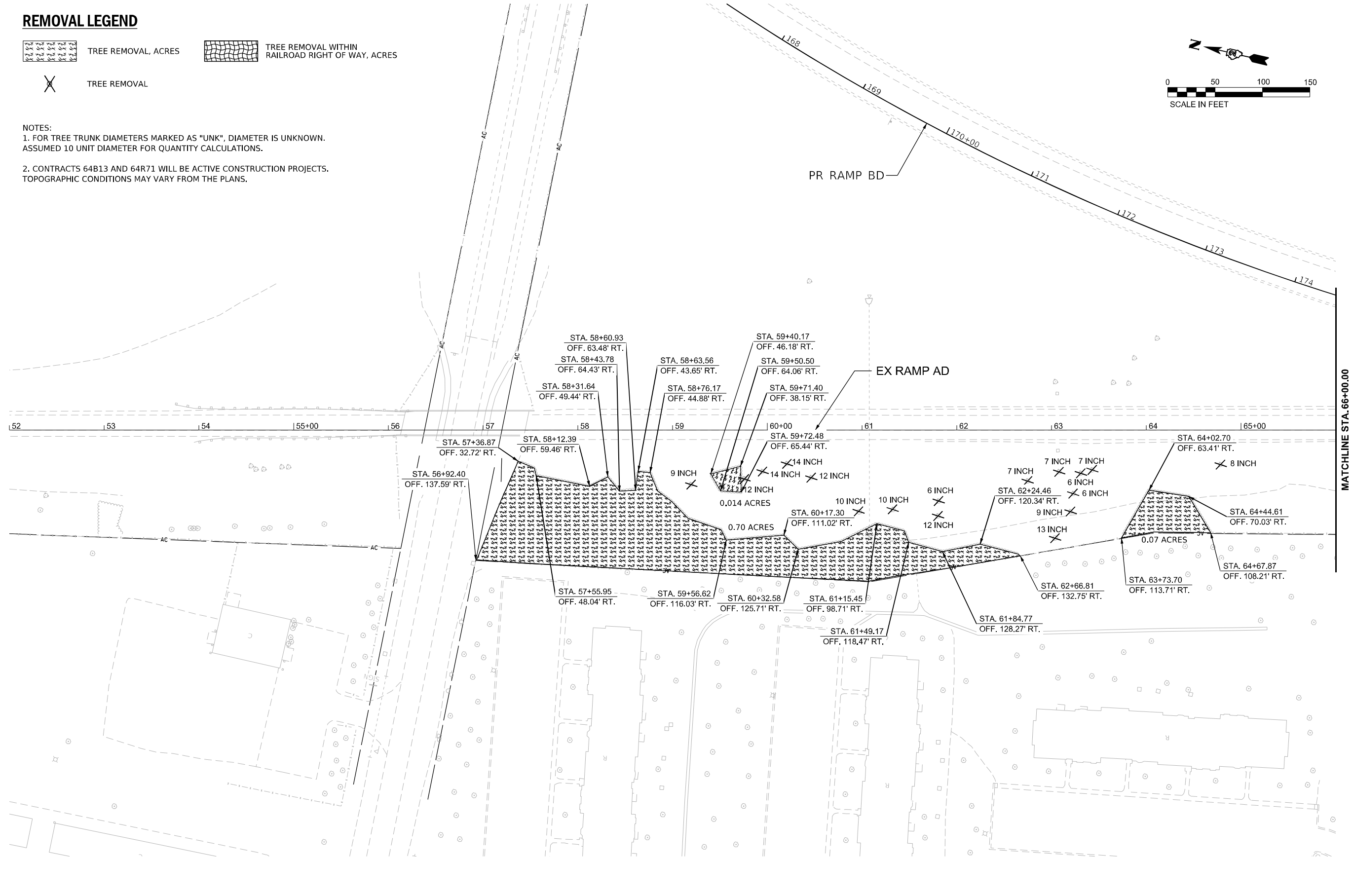
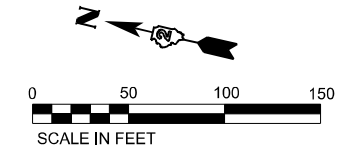
F.A.I. RTE.	SECTION	COUNTY	TOTAL SHEETS	SHEET NO.
*	((201-3) (4-1.5))TR	WINNEBAGO	23	15
CONTRACT NO. 64S92				
ILLINOIS		FED. AID PROJECT		

*FAI ROUTE 39 (I-39) & FAP 301 (US 20) *

REMOVAL LEGEND

-  TREE REMOVAL, ACRES
-  TREE REMOVAL WITHIN RAILROAD RIGHT OF WAY, ACRES
-  TREE REMOVAL

- NOTES:
- FOR TREE TRUNK DIAMETERS MARKED AS "UNK", DIAMETER IS UNKNOWN. ASSUMED 10 UNIT DIAMETER FOR QUANTITY CALCULATIONS.
 - CONTRACTS 64B13 AND 64R71 WILL BE ACTIVE CONSTRUCTION PROJECTS. TOPOGRAPHIC CONDITIONS MAY VARY FROM THE PLANS.



MODEL: Ramp AD Removal Sheet 01 [Sheet]
FILE NAME: c:\pwworkdir\benesch_projects\projects\0193156\0264S92-TREE-shr-REM-RampAD.dgn

USER NAME = jworthington	DESIGNED - A.GIBSON	REVISED -
	DRAWN - E.SAYRE	REVISED -
PLOT SCALE = \$SCALE\$	CHECKED - J.TARDY	REVISED -
PLOT DATE = 3/21/2024	DATE - 3/22/2024	REVISED -

**STATE OF ILLINOIS
DEPARTMENT OF TRANSPORTATION**

**EXISTING ROADWAY AND REMOVAL PLANS
RAMP AD**

SCALE: 1"=50' SHEET 8 OF 15 SHEETS STA. 52+00.00 TO STA. 66+00.00

F.A.I. RTE.	SECTION	COUNTY	TOTAL SHEETS	SHEET NO.
*	((201-3) (4-1,5)TR	WINNEBAGO	23	16
CONTRACT NO. 64S92				
ILLINOIS FED. AID PROJECT				

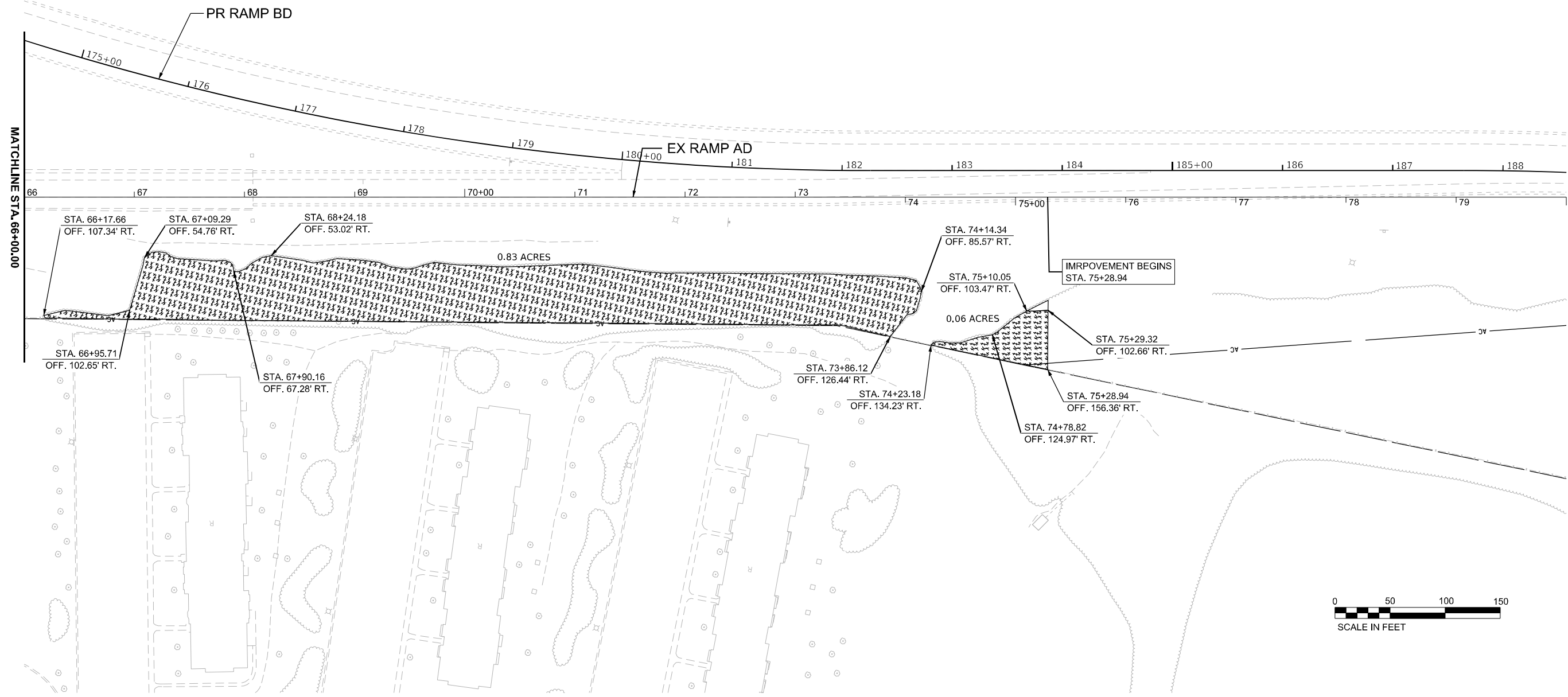
*FAI ROUTE 39 (I-39) & FAP 301 (US 20) *

REMOVAL LEGEND

-  TREE REMOVAL, ACRES
-  TREE REMOVAL WITHIN RAILROAD RIGHT OF WAY, ACRES
-  TREE REMOVAL



- NOTES:
- FOR TREE TRUNK DIAMETERS MARKED AS "UNK", DIAMETER IS UNKNOWN. ASSUMED 10 UNIT DIAMETER FOR QUANTITY CALCULATIONS.
 - CONTRACTS 64B13 AND 64R71 WILL BE ACTIVE CONSTRUCTION PROJECTS. TOPOGRAPHIC CONDITIONS MAY VARY FROM THE PLANS.



MODEL: Ramp AD Removal Sheet 02 (Sheet)
FILE NAME: c:\pwworkdir\benesch_projects\projects\193156\193156-D264S92-TREE-REMOVAL-RampAD.dgn

USER NAME = agibson	DESIGNED - A.GIBSON	REVISED -
	DRAWN - E.SAYRE	REVISED -
PLOT SCALE = \$SCALE\$	CHECKED - J.TARDY	REVISED -
PLOT DATE = 3/22/2024	DATE - 3/22/2024	REVISED -

**STATE OF ILLINOIS
DEPARTMENT OF TRANSPORTATION**

**EXISTING ROADWAY AND REMOVAL PLANS
RAMP AD**

SCALE: 1"=50' SHEET 9 OF 15 SHEETS STA. 66+00.00 TO STA. 80+00.00

F.A.I. RTE.	SECTION	COUNTY	TOTAL SHEETS	SHEET NO.
*	((201-3) (4-1.5))TR	WINNEBAGO	23	17
CONTRACT NO. 64S92				

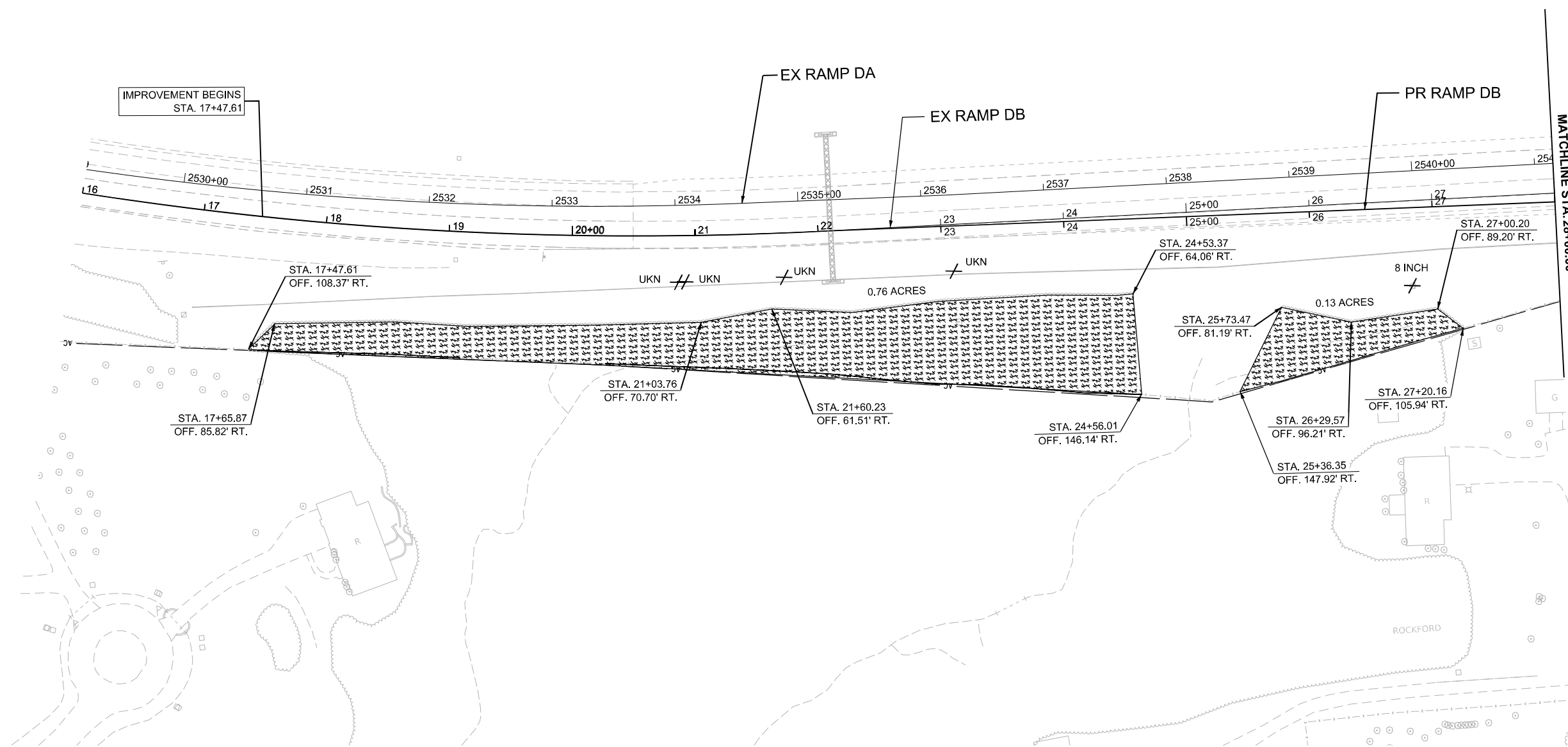
*FAI ROUTE 39 (I-39) & FAP 301 (US 20) *

REMOVAL LEGEND

-  TREE REMOVAL, ACRES
-  TREE REMOVAL WITHIN RAILROAD RIGHT OF WAY, ACRES
-  TREE REMOVAL



- NOTES:
- FOR TREE TRUNK DIAMETERS MARKED AS "UNK", DIAMETER IS UNKNOWN. ASSUMED 10 UNIT DIAMETER FOR QUANTITY CALCULATIONS.
 - CONTRACTS 64B13 AND 64R71 WILL BE ACTIVE CONSTRUCTION PROJECTS. TOPOGRAPHIC CONDITIONS MAY VARY FROM THE PLANS.



MODEL: Ramp DB Removal Sheet 01 (Sheet)
FILE NAME: c:\pwworkdir\benesch_projects\projects\0193156\0264S92-TREE-shr-REM-RampDB.dgn

USER NAME = agibson	DESIGNED - A. GIBSON	REVISED -
	DRAWN - E. SAYRE	REVISED -
PLOT SCALE = \$SCALE\$	CHECKED - J. TARDY	REVISED -
PLOT DATE = 3/22/2024	DATE - 3/22/2024	REVISED -

**STATE OF ILLINOIS
DEPARTMENT OF TRANSPORTATION**

**EXISTING ROADWAY AND REMOVAL PLANS
RAMP DB**

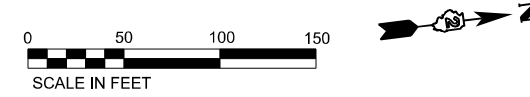
SCALE: 1"=50' SHEET 10 OF 15 SHEETS STA. 16+00.00 TO STA. 28+00.00

F.A.I. RTE.	SECTION	COUNTY	TOTAL SHEETS	SHEET NO.
	((201-3) (4-1.5)TR	WINNEBAGO	23	18
CONTRACT NO. 64S92				
ILLINOIS FED. AID PROJECT				

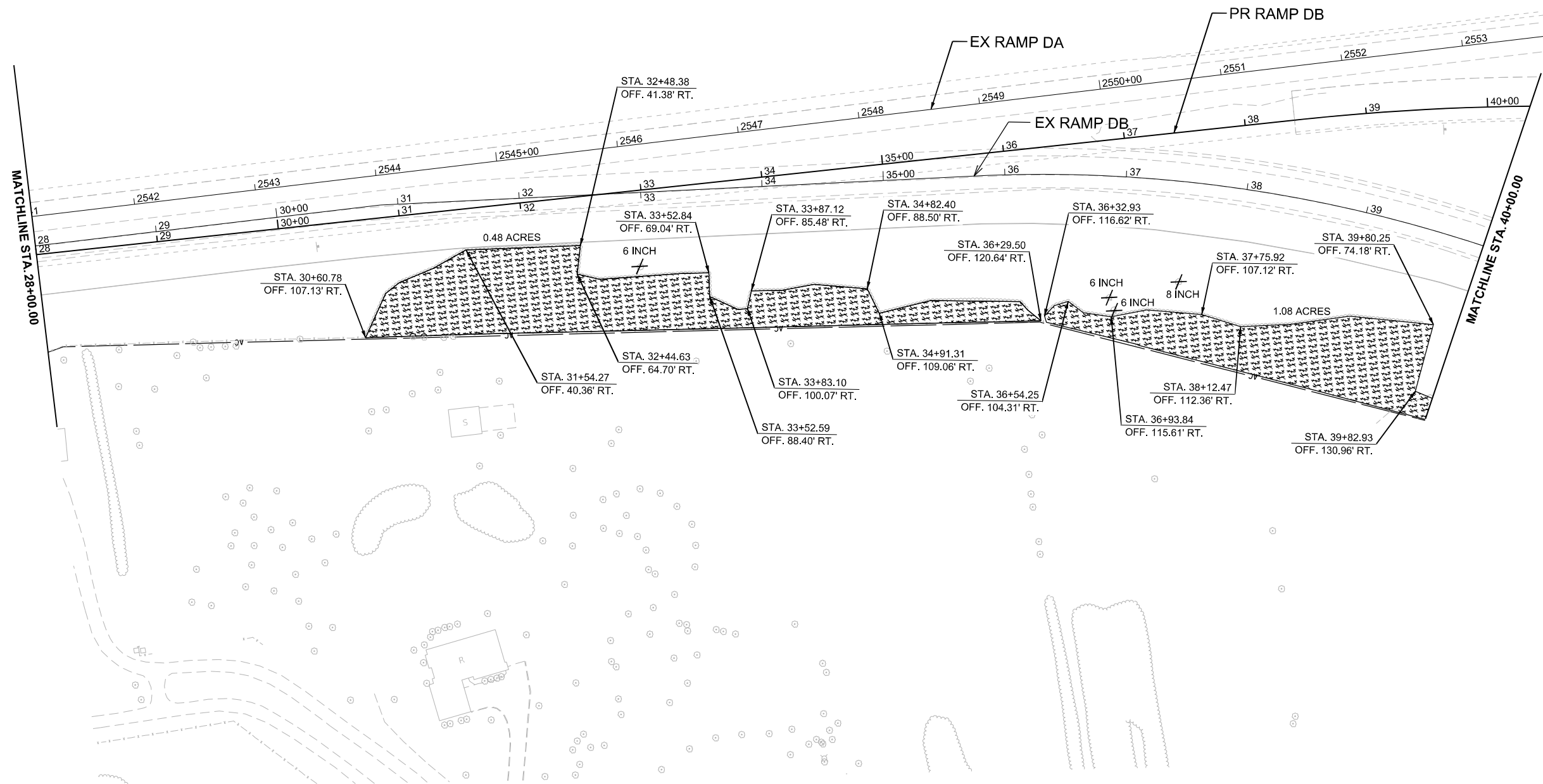
*FAI ROUTE 39 (I-39) & FAP 301 (US 20) *

REMOVAL LEGEND

-  TREE REMOVAL, ACRES
-  TREE REMOVAL WITHIN RAILROAD RIGHT OF WAY, ACRES
-  TREE REMOVAL



- NOTES:
- FOR TREE TRUNK DIAMETERS MARKED AS "UNK", DIAMETER IS UNKNOWN. ASSUMED 10 UNIT DIAMETER FOR QUANTITY CALCULATIONS.
 - CONTRACTS 64B13 AND 64R71 WILL BE ACTIVE CONSTRUCTION PROJECTS. TOPOGRAPHIC CONDITIONS MAY VARY FROM THE PLANS.



MODEL: Ramp DB Removal Sheet 02 (Sheet)
FILE NAME: c:\pwworkdir\benesch_projects\projects\0193156\264S92-TREE-shh-REM-RampDB.dgn



USER NAME = agibson	DESIGNED - A. GIBSON	REVISED -
PLOT SCALE = SSCALE\$	DRAWN - E. SAYRE	REVISED -
PLOT DATE = 3/22/2024	CHECKED - J. TARDY	REVISED -
	DATE - 3/22/2024	REVISED -

**STATE OF ILLINOIS
DEPARTMENT OF TRANSPORTATION**

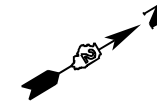
EXISTING ROADWAY AND REMOVAL PLANS RAMP DB		
SCALE: 1"=50'	SHEET 11 OF 15 SHEETS	STA. 28+00.00 TO STA. 40+00.00

F.A.I. RTE.	SECTION	COUNTY	TOTAL SHEETS	SHEET NO.
*	((201-3) (4-1,5))TR	WINNEBAGO	23	19
CONTRACT NO. 64S92				
ILLINOIS FED. AID PROJECT				

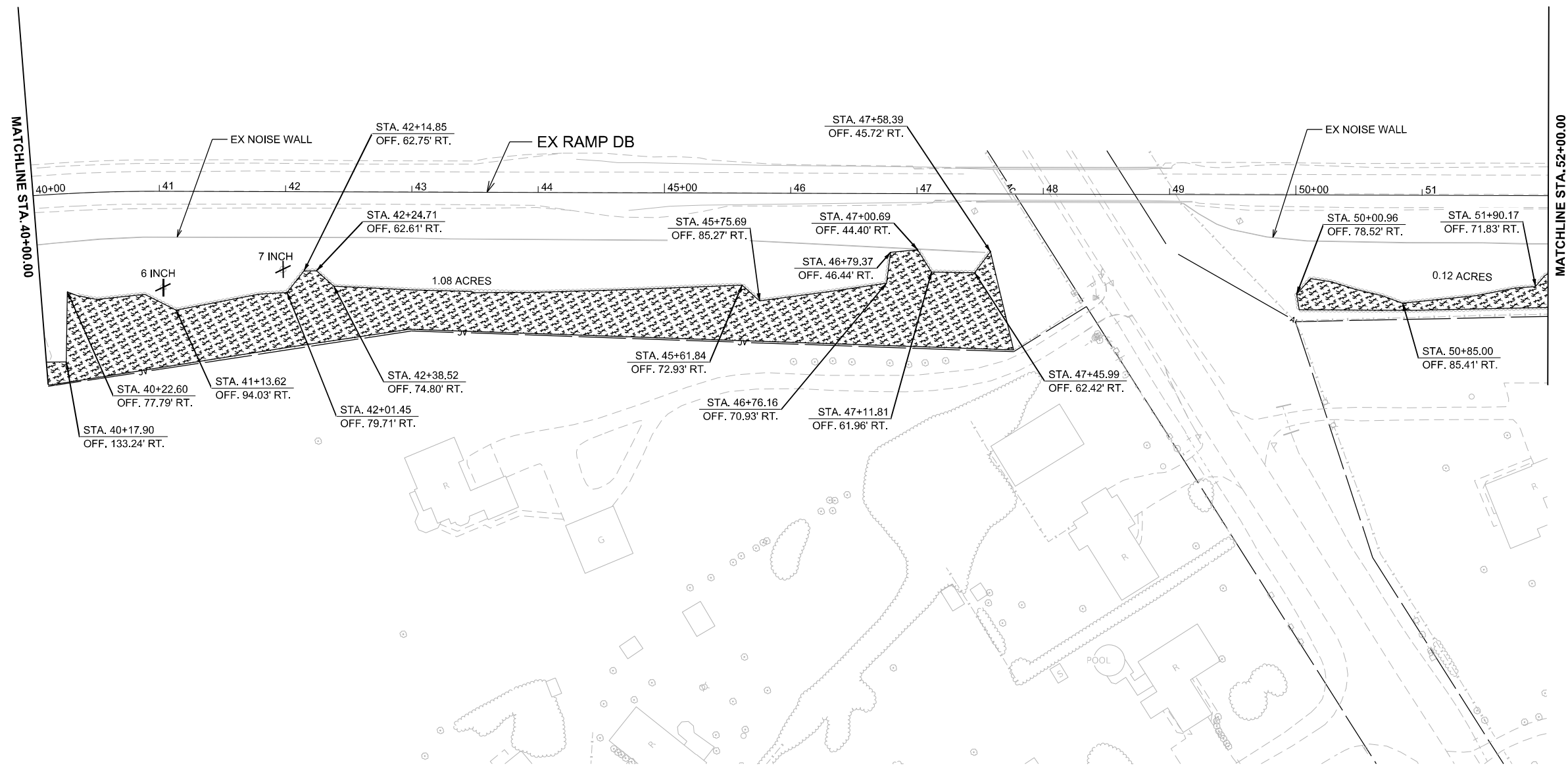
*FAI ROUTE 39 (I-39) & FAP 301 (US 20)

REMOVAL LEGEND

-  TREE REMOVAL, ACRES
-  TREE REMOVAL WITHIN RAILROAD RIGHT OF WAY, ACRES
-  TREE REMOVAL



- NOTES:
- FOR TREE TRUNK DIAMETERS MARKED AS "UNK", DIAMETER IS UNKNOWN. ASSUMED 10 UNIT DIAMETER FOR QUANTITY CALCULATIONS.
 - CONTRACTS 64B13 AND 64R71 WILL BE ACTIVE CONSTRUCTION PROJECTS. TOPOGRAPHIC CONDITIONS MAY VARY FROM THE PLANS.



MODEL: Ramp DB Removal Sheet 03 (Sheet)
FILE NAME: c:\pwworkdir\benesch_projects\projects\0193156\264S92-TREE-shr-REM-RampDB.dgn



USER NAME = agibson	DESIGNED - A. GIBSON	REVISED -
PLOT SCALE = \$SCALE\$	DRAWN - E. SAYRE	REVISED -
PLOT DATE = 3/22/2024	CHECKED - J. TARDY	REVISED -
	DATE - 3/22/2024	REVISED -

**STATE OF ILLINOIS
DEPARTMENT OF TRANSPORTATION**

**EXISTING ROADWAY AND REMOVAL PLANS
RAMP DB**

SCALE: 1"=50' SHEET 12 OF 15 SHEETS STA. 40+00.00 TO STA. 52+00.00

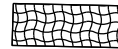
F.A.I. RTE.	SECTION	COUNTY	TOTAL SHEETS	SHEET NO.
*	((201-3) (4-1,5))TR	WINNEBAGO	23	20
CONTRACT NO. 64S92				

*FAI ROUTE 39 (I-39) & FAP 301 (US 20)

REMOVAL LEGEND



TREE REMOVAL, ACRES



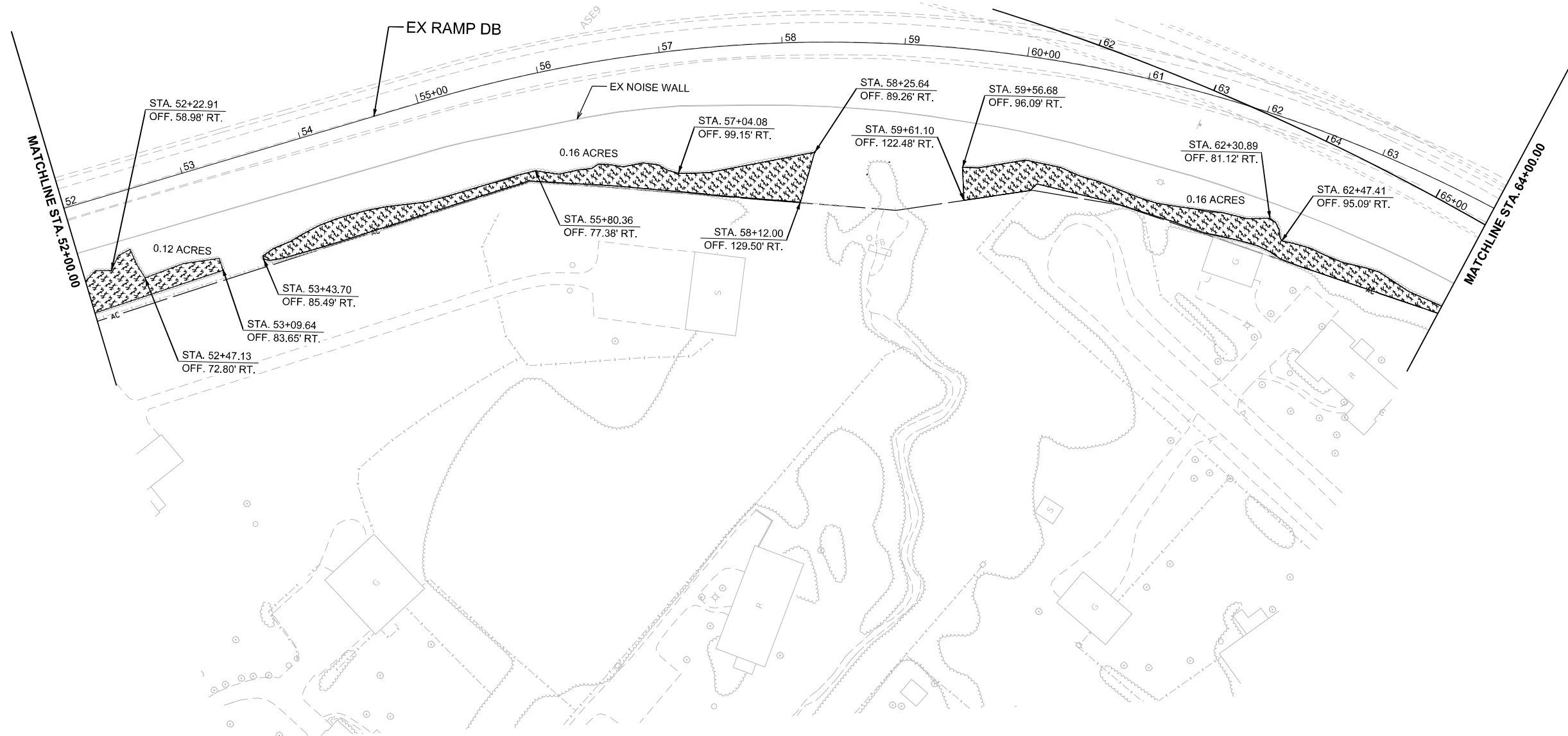
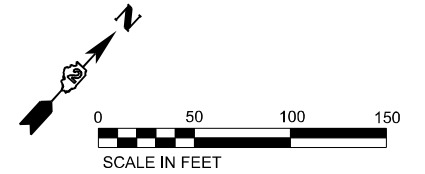
TREE REMOVAL WITHIN RAILROAD RIGHT OF WAY, ACRES



TREE REMOVAL

NOTES:

- FOR TREE TRUNK DIAMETERS MARKED AS "UNK", DIAMETER IS UNKNOWN. ASSUMED 10 UNIT DIAMETER FOR QUANTITY CALCULATIONS.
- CONTRACTS 64B13 AND 64R71 WILL BE ACTIVE CONSTRUCTION PROJECTS. TOPOGRAPHIC CONDITIONS MAY VARY FROM THE PLANS.



MODEL: Ramp DB Removal Sheet 04 [Sheet]
FILE NAME: c:\pwworkdir\benesch_projects\projects\0193156\264S92-TREE-shr-REM-RampDB.dgn



USER NAME = agibson	DESIGNED - A. GIBSON	REVISED -
PLOT SCALE = \$SSCALE\$	DRAWN - E. SAYRE	REVISED -
PLOT DATE = 3/22/2024	CHECKED - J. TARDY	REVISED -
	DATE - 3/22/2024	REVISED -

STATE OF ILLINOIS
DEPARTMENT OF TRANSPORTATION

EXISTING ROADWAY AND REMOVAL PLANS
RAMP DB

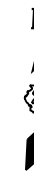
SCALE: 1"=50' SHEET 13 OF 15 SHEETS STA. 52+00.00 TO STA. 64+00.00

F.A.I. RTE.	SECTION	COUNTY	TOTAL SHEETS	SHEET NO.
*	((201-3) (4-1,5))TR	WINNEBAGO	23	21
CONTRACT NO. 64S92				

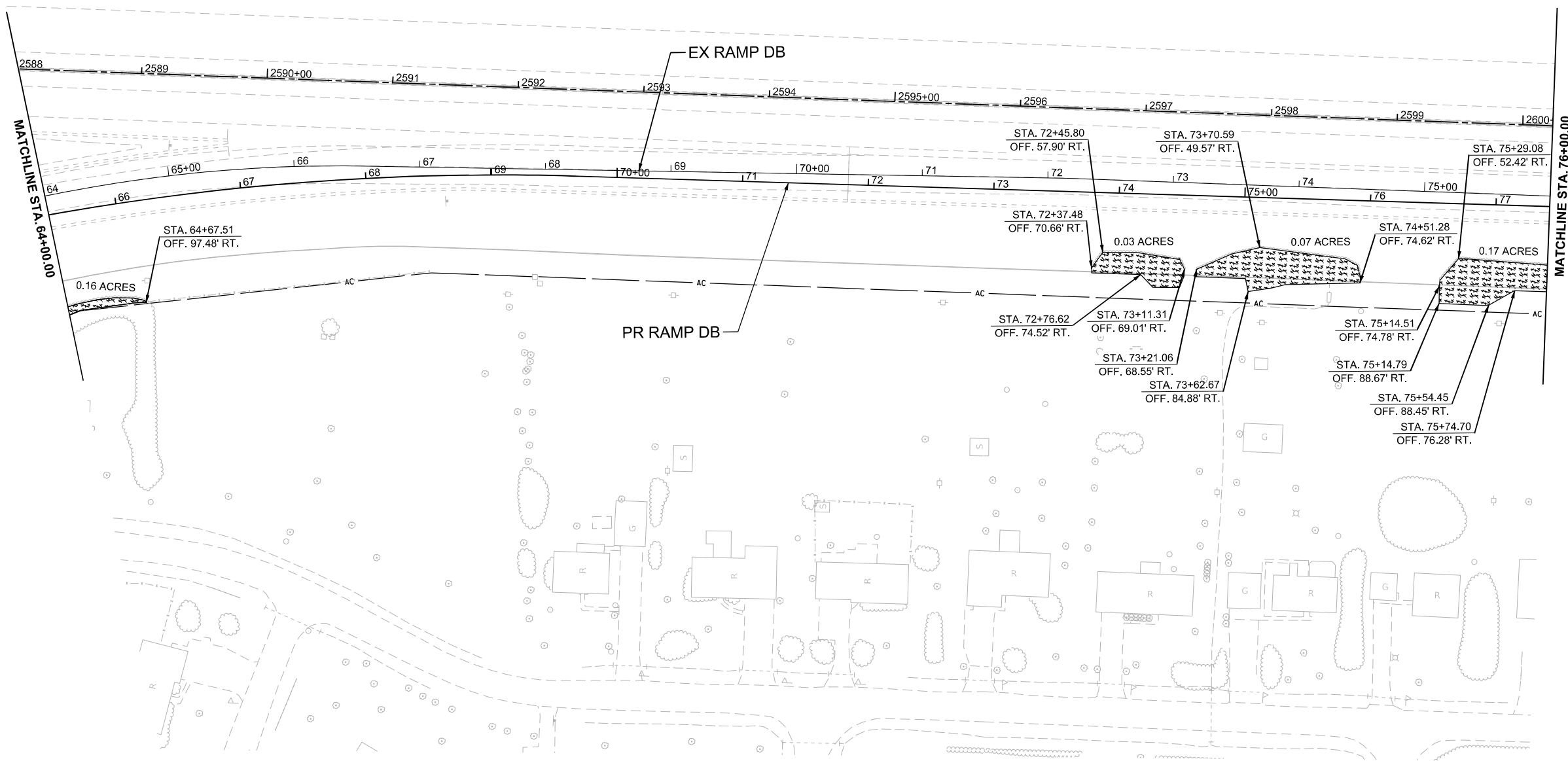
*FAI ROUTE 39 (I-39) & FAP 301 (US 20)

REMOVAL LEGEND

-  TREE REMOVAL, ACRES
-  TREE REMOVAL WITHIN RAILROAD RIGHT OF WAY, ACRES
-  TREE REMOVAL



- NOTES:
- FOR TREE TRUNK DIAMETERS MARKED AS "UNK", DIAMETER IS UNKNOWN. ASSUMED 10 UNIT DIAMETER FOR QUANTITY CALCULATIONS.
 - CONTRACTS 64B13 AND 64R71 WILL BE ACTIVE CONSTRUCTION PROJECTS. TOPOGRAPHIC CONDITIONS MAY VARY FROM THE PLANS.



MODEL: Ramp DB Removal Sheet 05 (Sheet)
FILE NAME: c:\pwworkdir\benesch_projects\projects\0193156\0264S92-TREE-REMOVAL-RAMP-DB.dgn



USER NAME = agibson	DESIGNED - A. GIBSON	REVISED -
PLOT SCALE = SSCALE\$	DRAWN - E. SAYRE	REVISED -
PLOT DATE = 3/22/2024	CHECKED - J. TARDY	REVISED -
	DATE - 3/22/2024	REVISED -

**STATE OF ILLINOIS
DEPARTMENT OF TRANSPORTATION**

**EXISTING ROADWAY AND REMOVAL PLANS
RAMP DB**

SCALE: 1"=50' SHEET 14 OF 15 SHEETS STA. 64+00.00 TO STA. 76+00.00

F.A.I. RTE.	SECTION	COUNTY	TOTAL SHEETS	SHEET NO.
*	((201-3) (4-1,5))TR	WINNEBAGO	23	22
CONTRACT NO. 64S92				

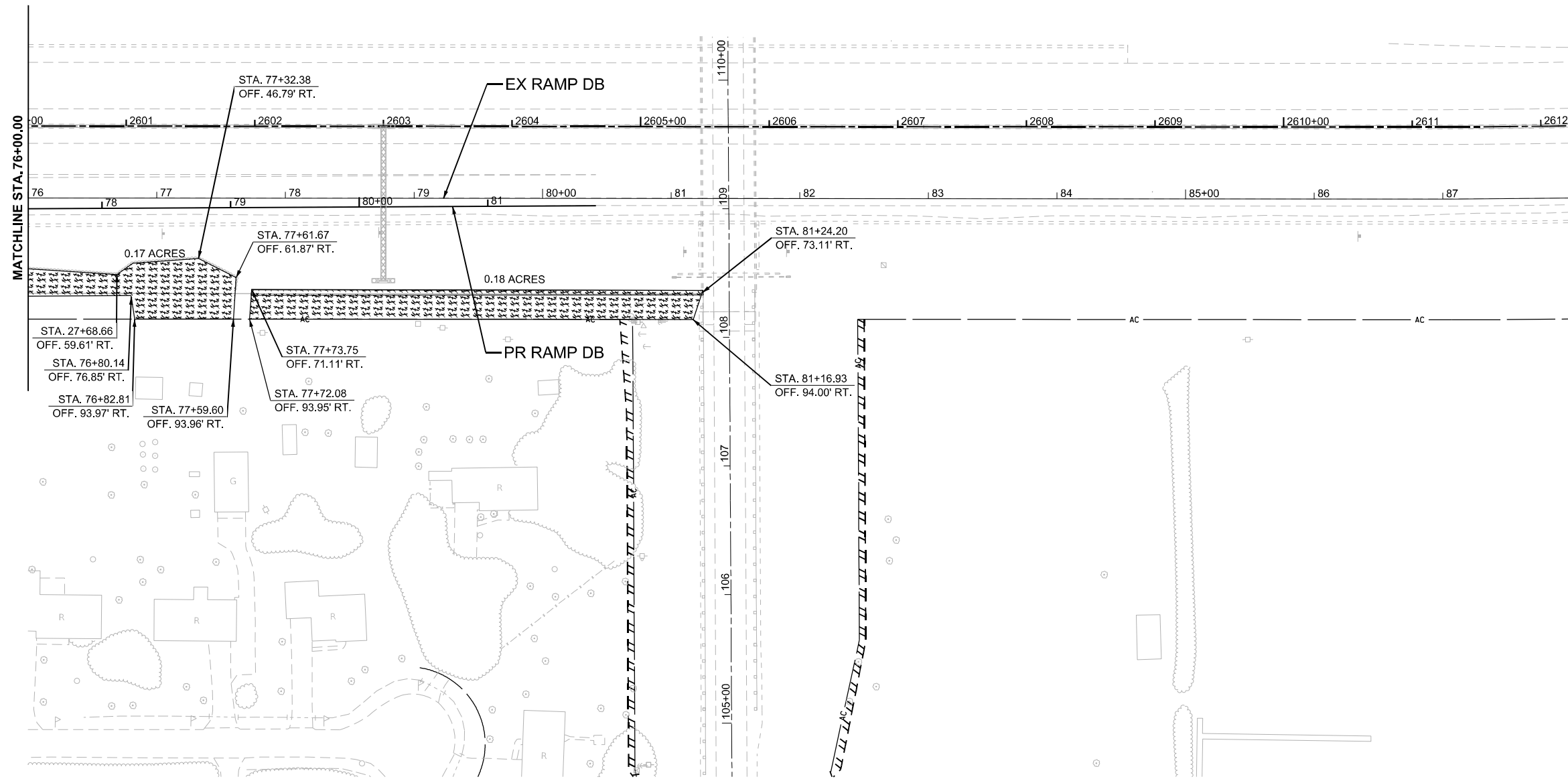
*FAI ROUTE 39 (I-39) & FAP 301 (US 20)

REMOVAL LEGEND

-  TREE REMOVAL, ACRES
-  TREE REMOVAL WITHIN RAILROAD RIGHT OF WAY, ACRES
-  TREE REMOVAL



- NOTES:
1. FOR TREE TRUNK DIAMETERS MARKED AS "UNK", DIAMETER IS UNKNOWN. ASSUMED 10 UNIT DIAMETER FOR QUANTITY CALCULATIONS.
 2. CONTRACTS 64B13 AND 64R71 WILL BE ACTIVE CONSTRUCTION PROJECTS. TOPOGRAPHIC CONDITIONS MAY VARY FROM THE PLANS.



MODEL: Ramp DB Removal Sheet 06 (Sheet)
 FILE NAME: c:\pwworkdir\benesch_projects\projects\0193156\264S92-TREE-REMOVAL-RAMP-DB.dgn

USER NAME = jworthington	DESIGNED - A. GIBSON	REVISED -
	DRAWN - E. SAYRE	REVISED -
PLOT SCALE = \$SCALE\$	CHECKED - J. TARDY	REVISED -
PLOT DATE = 3/21/2024	DATE - 3/22/2024	REVISED -

**STATE OF ILLINOIS
DEPARTMENT OF TRANSPORTATION**

**EXISTING ROADWAY AND REMOVAL PLANS
RAMP DB**

SCALE: 1"=50' SHEET 15 OF 15 SHEETS STA. 76+00.00 TO STA. 88+00.00

F.A.I. RTE.	SECTION	COUNTY	TOTAL SHEETS	SHEET NO.
*	((201-3) (4-1.5))TR	WINNEBAGO	23	23
CONTRACT NO. 64S92				
		ILLINOIS	FED. AID PROJECT	