

STATE OF ILLINOIS  
DEPARTMENT OF TRANSPORTATION

F.A.I. RTE.	SECTION	COUNTY	TOTAL SHEETS	SHEET NO.
57	38(3-5)PP-3	IROQUOIS	13	1
		ILLINOIS	CONTRACT NO. 66P14	

**INDEX OF SHEETS**

- 1 . COVER SHEET
- 2 . GENERAL NOTES
- 3 - 4 . SUMMARY OF QUANTITIES
- 5 . TYPICAL SECTIONS
- 6 . CLASS A PATCHING SCHEDULES - NORTHBOUND LANES
- 7 . CLASS A PATCHING SCHEDULES - SOUTHBOUND LANES
- 8 . PAVEMENT MARKING SCHEDULES
- 9 . TRAFFIC CONTROL AND PROTECTION, STANDARD 701400
- 10 - 12 . CLASS A PATCHING DETAILS
- 13 . PAVEMENT MARKING

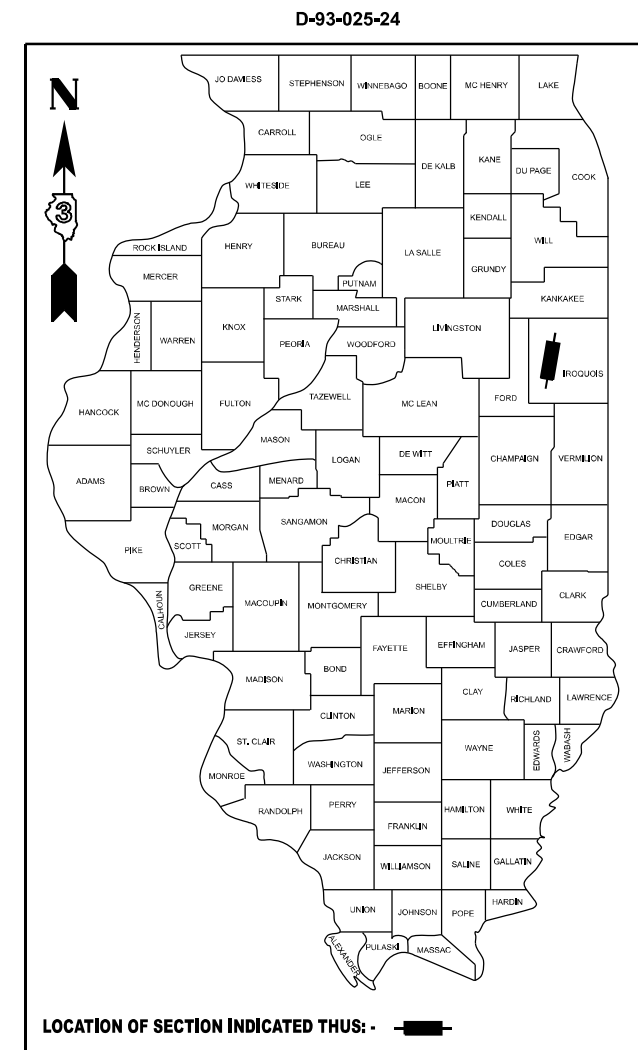
**STANDARDS**

- 000001-08 STANDARD SYMBOLS, ABBREVIATIONS AND PATTERNS
- 001001-02 AREAS OF REINFORCEMENT BARS
- 001006 DECIMAL OF AN INCH AND OF A FOOT
- 701101-05 OFF-ROAD OPERATIONS, MULTILANE, 15' (4.5 m) TO 24" (600 mm) FROM PAVEMENT EDGE
- 701106-02 OFF-ROAD OPERATIONS, MULTILANE, MORE THAN 15' (4.5 m) AWAY
- 701401-13 LANE CLOSURE, FREEWAY/EXPRESSWAY
- 701411-09 LANE CLOSURE, MULTILANE, AT ENTRANCE OR EXIT RAMP FOR SPEEDS ≥ 45 MPH
- 701426-09 LANE CLOSURE, MULTILANE INTERMITTENT OR MOVING OPERATION, FOR SPEEDS ≥ 45 MPH
- 701428-01 TRAFFIC CONTROL, SETUP AND REMOVAL, FREEWAY/EXPRESSWAY
- 701901-09 TRAFFIC CONTROL DEVICES

**PROPOSED  
HIGHWAY PLANS**

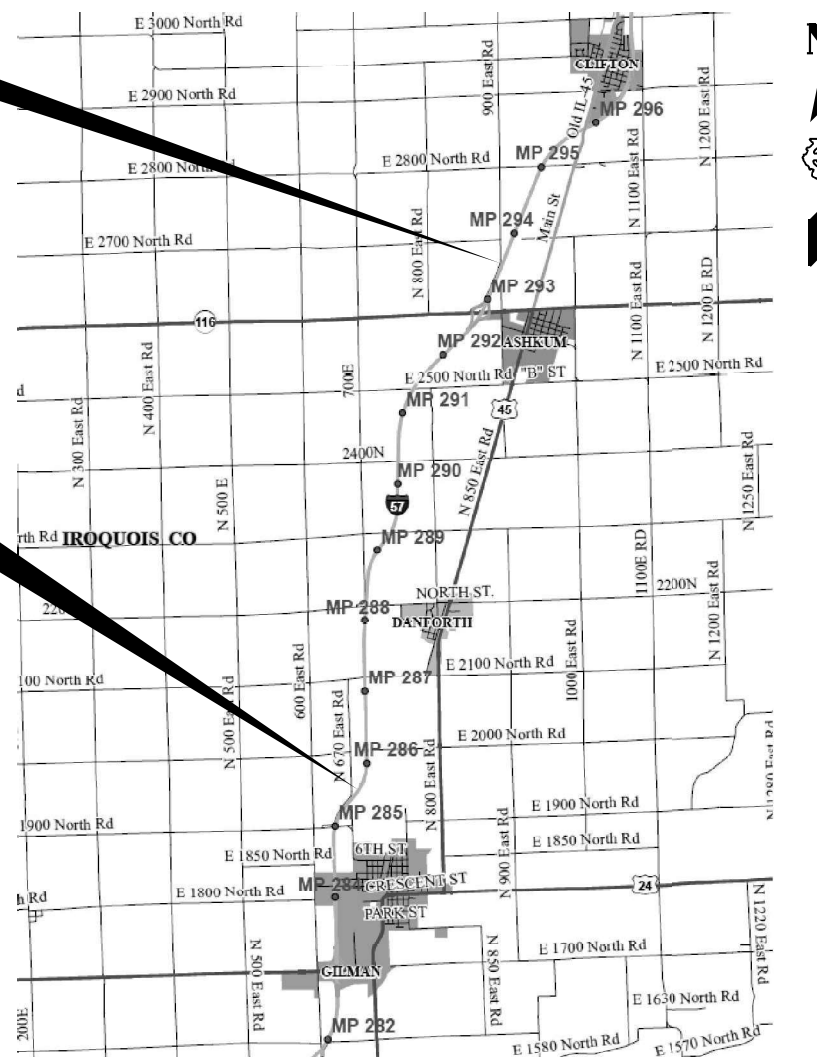
**F.A.I. ROUTE 57 (I-57)  
SECTION 38(3-5)PP-3  
PROJECT  
CLASS A PAVEMENT PATCHING  
IROQUOIS COUNTY**

C-93-060-24

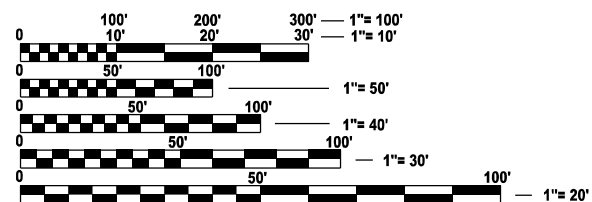


**END IMPROVEMENT**  
**M. M. 293.50**  
**0.64 MI. NORTH OF IL 116**  
**(ASHKUM INTERCHANGE)**

**BEGIN IMPROVEMENT**  
**M.M. 285.50**  
**2.5 MI. NORTH OF US 24**  
**(GILMAN INTERCHANGE)**



GROSS LENGTH = 41,184 FT. = 7.80 MILE  
NET LENGTH = 1,084 FT = 0.20 MILE



FULL SIZE PLANS HAVE BEEN PREPARED USING STANDARD ENGINEERING SCALES. REDUCED SIZED PLANS WILL NOT CONFORM TO STANDARD SCALES. IN MAKING MEASUREMENTS ON REDUCED PLANS, THE ABOVE SCALES MAY BE USED.

**J.U.L.I.E.**  
**JOINT UTILITY LOCATION INFORMATION FOR EXCAVATION**  
1-800-892-0123  
OR 811

**PROJECT ENGINEER YOGESH PATEL P.E.**  
**UNIT CHIEF RON WOODSHANK**  
**DISTRICT NO. 3 (815) 434-6131**  
**CONTRACT NO. 66P14**

**FUNCTIONAL CLASSIFICATION**  
**RURAL INTERSTATE**  
**F.A.I. ROUTE 57 (I-57)**  
**2021 ADT = 16,900**  
**P.V. 55.2 % S.U. 4.0 % M.U. 40.8 %**

STATE OF ILLINOIS  
DEPARTMENT OF TRANSPORTATION

SUBMITTED March 26, 2024

*Trisha Thompson*  
REGIONAL ENGINEER

May 10, 2024  
*[Signature]*  
ENGINEER OF DESIGN AND ENVIRONMENT

May 10, 2024  
*[Signature]*  
DIRECTOR OF HIGHWAYS PROJECT IMPLEMENTATION

**PRINTED BY THE AUTHORITY  
OF THE STATE OF ILLINOIS**

**GENERAL NOTES**

ALL EXCAVATED MATERIAL, WHICH INCLUDES DIGGING OR GRADING OF ANY SOIL OR FILL MATERIAL, WITH THE EXCEPTION OF AGGREGATE FILLS, MUST BE INCORPORATED WITHIN THE IDOT RIGHT OF WAY.

**COMMITMENTS**

NONE

**STATE OF ILLINOIS  
DEPARTMENT OF TRANSPORTATION  
DISTRICT THREE  
AS BUILT INFORMATION**

\_\_\_\_\_  
**SUPERVISING CONSTRUCTION FIELD ENGINEER**

\_\_\_\_\_  
**RESIDENT ENGINEER / TECHNICIAN**

**START & END DATES  
OF CONSTRUCTION:**

\_\_\_\_\_

**INSPECTORS:**

\_\_\_\_\_

\_\_\_\_\_

\_\_\_\_\_

MODEL: Default  
FILE NAME: c:\pwworking\woodshank\100667027\66P14.dgn

USER NAME = ronald.woodshank	DESIGNED - RW	REVISED -
	DRAWN - RW	REVISED -
PLOT SCALE = \$SCALE\$	CHECKED - YP	REVISED -
PLOT DATE = 2/7/2024	DATE - 1/16/2024	REVISED -

**STATE OF ILLINOIS  
DEPARTMENT OF TRANSPORTATION**

**GENERAL NOTES**

SCALE: SHEET 1 OF 1 SHEETS STA. TO STA.

F.A.I RTE.	SECTION	COUNTY	TOTAL SHEETS	SHEET NO.
57	38(3-5)PP-3	IROQUOIS	13	2
			CONTRACT NO. 66P14	
		ILLINOIS	FED. AID PROJECT	

CODE NO.	ITEM	UNIT	TOTAL QUANTITY	CONSTRUCTION CODE	
				CONTRACT MAINTENANCE	
				100% STATE	
				ROADWAY	RURAL
44200610	CLASS A PATCHES, TYPE II, 13 INCH	SQ YD	773	773	
44200612	CLASS A PATCHES, TYPE III, 13 INCH	SQ YD	72	72	
44200614	CLASS A PATCHES, TYPE IV, 13 INCH	SQ YD	573	573	
44213000	PATCHING REINFORCEMENT	SQ YD	1418	1418	
44213200	SAWCUTS	FOOT	4306	4306	
67100100	MOBILIZATION	L SUM	1	1	
70100420	TRAFFIC CONTROL AND PROTECTION, STANDARD 701411	EACH	4	4	
70100800	TRAFFIC CONTROL AND PROTECTION, STANDARD 701401	L SUM	1	1	
70103815	TRAFFIC CONTROL SURVEILLANCE	CAL DA	20	20	
70107025	CHANGEABLE MESSAGE SIGN	CAL DA	28	28	
* 78005110	EPOXY PAVEMENT MARKING - LINE 4"	FOOT	2164	2164	
* 78005130	EPOXY PAVEMENT MARKING - LINE 6"	FOOT	1880	1880	
X2700001	TEMPORARY RUMBLE STRIPS (SPECIAL)	EACH	16	16	
Z0018911	DRILL AND GROUT #6 TIE BARS	EACH	143	143	

\*SPECIALTY ITEMS

MODEL: Default  
FILE NAME: c:\pwworking\woodshank\1027166P14.dgn

USER NAME = ronald.woodshank	DESIGNED - RW	REVISED -	<b>STATE OF ILLINOIS DEPARTMENT OF TRANSPORTATION</b>	<b>SUMMARY OF QUANTITIES</b>			F.A.I RTE.	SECTION	COUNTY	TOTAL SHEETS	SHEET NO.
DRAWN - RW	REVISIED -	REVISED -					57	38(3-5)PP-3	IROQUOIS	13	3
PLOT SCALE = \$SCALE\$	CHECKED - YP	REVISED -		SCALE: SHEET 1 OF 2 SHEETS STA. TO STA.			CONTRACT NO. 66P14				
PLOT DATE = 2/7/2024	DATE - 1/16/2024	REVISED -					ILLINOIS FED. AID PROJECT				

CODE NO.	ITEM	UNIT	TOTAL QUANTITY	CONSTRUCTION CODE	
				CONTRACT MAINTENANCE	ROADWAY
				100% STATE	0006
					RURAL
Z0018913	DRILL AND GROUT #8 TIE BARS	EACH	1092		1092

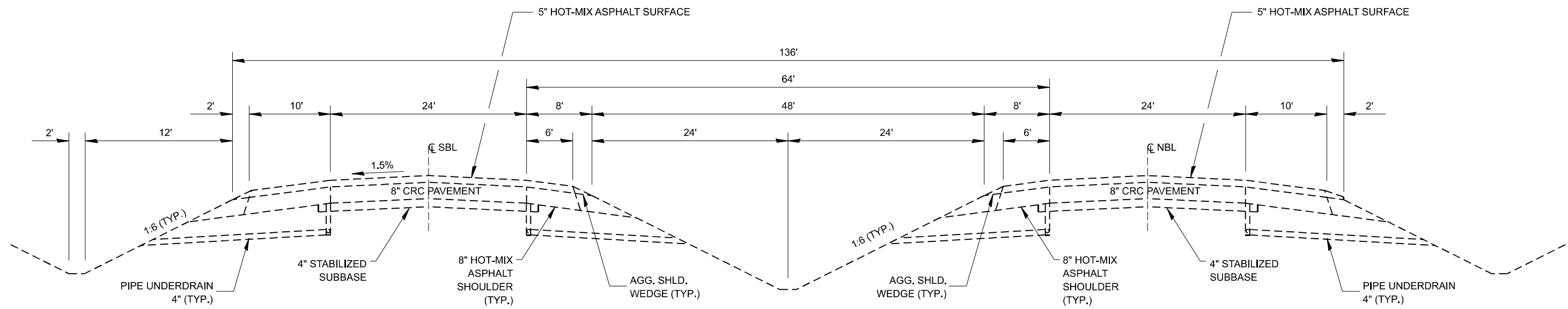
MODEL: Default  
FILE NAME: c:\pwworking\woodshank\100661027\66P14.dgn

USER NAME = ronald.woodshank	DESIGNED - RW	REVISED -
	DRAWN - RW	REVISED -
PLOT SCALE = \$SCALE\$	CHECKED - YP	REVISED -
PLOT DATE = 2/7/2024	DATE - 1/16/2024	REVISED -

**STATE OF ILLINOIS  
DEPARTMENT OF TRANSPORTATION**

SUMMARY OF QUANTITIES	
SCALE:	SHEET 2 OF 2 SHEETS STA. TO STA.

F.A.I. RTE.	SECTION	COUNTY	TOTAL SHEETS	SHEET NO.
57	38(3-5)PP-3	IROQUOIS	13	4
			CONTRACT NO. 66P14	
ILLINOIS FED. AID PROJECT				



**TYPICAL SECTION (F.A.I.57)**  
**MILE MARKER 285.50 - MILE MARKER 293.50**

MODEL: Default  
 FILE NAME: c:\pwworking\woodshank\10661027166P14.dgn

USER NAME = ronald.woodshank	DESIGNED - RW	REVISED -
	DRAWN - RW	REVISED -
PLOT SCALE = \$SCALE\$	CHECKED - YP	REVISED -
PLOT DATE = 2/7/2024	DATE - 1/16/2024	REVISED -

**STATE OF ILLINOIS**  
**DEPARTMENT OF TRANSPORTATION**

**TYPICAL SECTIONS**

SCALE: SHEET 1 OF 1 SHEETS STA. TO STA.

F.A.I. RTE.	SECTION	COUNTY	TOTAL SHEETS	SHEET NO.
57	38(3-5)PP-3	IROQUOIS	13	5
CONTRACT NO. 66P14				
ILLINOIS FED. AID PROJECT				

**PATCHING SCHEDULES - NORTHBOUND LANES**

PASSING LANE											DRIVING LANE										
LOCATION		PATCH LENGTH	PATCH WIDTH	CLASS A			PATCH REINFORCEMENT	SAW CUTS	DRILL AND GROUT #6 TIE BARS	DRILL AND GROUT #8 TIE BARS	PATCH LENGTH	PATCH WIDTH	CLASS A			PATCH REINFORCEMENT	SAW CUTS	DRILL AND GROUT #6 TIE BARS	DRILL AND GROUT #8 TIE BARS		
				TYPE II 10"	TYPE III 10"	TYPE IV 10"							TYPE II 10"	TYPE III 10"	TYPE IV 10"						
MILE MARKER	STRUCTURE NO.	FOOT	FOOT	SQ YD	SQ YD	SQ YD	SQ YD	FOOT	EACH	EACH	FOOT	FOOT	SQ YD	SQ YD	SQ YD	SQ YD	FOOT	EACH	EACH		
285.50											8	12	11			11	40		24		
286.30		6	12	8			8	36		24											
286.60											6	12	8			8	36		24		
286.60		8	12	11			11	40		24											
286.80											8	12	11			11	40		24		
286.80		6	12	8			8	36		24											
287.25	038-0131																				
287.70											6	12	8			8	36		24		
287.70		6	12	8			8	36		24											
287.75											8	12	11			11	40		24		
287.75		8	12	11			11	40		24											
287.85											6	12	8			8	36		24		
287.90											8	12	11			11	40		24		
287.95											12	12		16		16	48		24		
288.20	038-0072																				
288.25		6	12	8			8	36		24											
288.60											8	12	11			11	40		24		
288.65											6	12	8			8	36		24		
288.70											6	12	8			8	36		24		
289.30											8	12	11			11	40		24		
289.35	038 0130																				
290.10											6	12	8			8	36		24		
290.20											8	12	11			11	40		24		
290.20		6	12	8			8	36		24											
290.35		15	12		20		20	54		24											
290.35	038-0125										120	12			160	160	264	40	24		
290.70											6	12	8			8	36		24		
290.70		6	12					36		24											
291.05											8	12	11			11	40		24		
291.10		8	12	11			11	40		24											
291.20		8	12	11			11	40		24											
291.20		6	12	8			8	36		24											
291.50											6	12	8			8	36		24		
291.60											8					16					
291.60		8	12	11			11	40		24											
291.70											6	12	8			8	36		24		
291.90											8	12	11			11	40		24		
291.95											6	12	8			8	36		24		
291.95		6	12	8			8	36		24											
292.05											6	12	8			8	36		24		
292.05		8	12	11			11	40		24											
292.10											6	12	8			8	36		24		
292.10		6	12	8			8	36		24											
292.15											6	12	8			8	36		24		
292.20											8	12	11			11	40		24		
292.20											6	12	8			8	36		24		
292.25											15	12		20		20	54		24		
292.40											6	12	8			8	36		24		
292.50											8	12	11			11	40		24		
292.50		8	12	11			11	40		24											
292.60											6	12	8			8	36		24		
293.30											8	12	11			11	40		24		
PASSING LANE TOTALS				141	20		161	658		408	DRIVING LANE TOTALS				260	36	160	456	1438	40	792

MODEL: Default  
FILE NAME: C:\pwworkspace\woodshank\100637027\66P14.dgn

USER NAME = ronald.woodshank	DESIGNED - RW	REVISED -
	DRAWN - RW	REVISED -
PLOT SCALE = \$SCALE\$	CHECKED - YP	REVISED -
PLOT DATE = 2/7/2024	DATE - 1/16/2024	REVISED -

**STATE OF ILLINOIS  
DEPARTMENT OF TRANSPORTATION**

<b>SCHEDULES</b>			
SCALE:	SHEET 1	OF 3	SHEETS STA.
			TO STA.

F.A.I. RTE.	SECTION	COUNTY	TOTAL SHEETS	SHEET NO.
57	38(3-5)PP-3	IROQUOIS	13	6
CONTRACT NO. 66P14				
ILLINOIS FED. AID PROJECT				

**PATCHING SCHEDULES - SOUTHBOUND LANES**

PASSING LANE											DRIVING LANE										
LOCATION		PATCH LENGTH	PATCH WIDTH	CLASS A			PATCH REINFORCEMENT	SAW CUTS	DRILL AND GROUT #6 TIE BARS	DRILL AND GROUT #8 TIE BARS	PATCH LENGTH	PATCH WIDTH	CLASS A			PATCH REINFORCEMENT	SAW CUTS	DRILL AND GROUT #6 TIE BARS	DRILL AND GROUT #8 TIE BARS		
				TYPE II 13"	TYPE III 13"	TYPE IV 13"							TYPE II 13"	TYPE III 13"	TYPE IV 13"						
MILE MARKER	STRUCTURE NO.	FOOT	FOOT	SQ YD	SQ YD	SQ YD	SQ YD	FOOT	EACH	EACH	FOOT	FOOT	SQ YD	SQ YD	SQ YD	SQ YD	FOOT	EACH	EACH		
295.07	038-0128																				
295.05											8	12	11			11	40		24		
295.00											12	12		16		16	48		24		
295.00											8	12	11			11	40		24		
292.80											6	12	8			8	36		24		
292.60											8	12	11			11	40		24		
292.40											6	12	8			8	36		24		
292.20											8						16				
291.95											6	12	8			8	36		24		
291.40											6	12	8			8	36		24		
291.40		6	12	8			8	36											24		
291.35											8	12	11			11	40		24		
291.30											6	12	8			8	36		24		
291.30		8	12	11			11	40											24		
290.95											8	12	11			11	40		24		
290.50											6	12	8			8	36		24		
290.50		6	12	8			8	36											24		
290.40											6	12	8			8	36		24		
290.35											8	12	11			11	40		24		
290.35											8	12	11			11	40		24		
290.20											6	12	8			8	36		24		
290.20		8	12	11			11	40											24		
290.05											6	12	8			8	36		24		
290.05		6	12	8			8	36											24		
289.90											8	12	11			11	40		24		
289.70											6	12	8			8	36		24		
289.60											8	12	11			11	40		24		
289.50											6	12	8			8	36		24		
289.35	038-0130										310	12			413	413	644	103	24		
289.30		6	12	8			8	36											24		
288.70		8	12	11			11	40											24		
288.30											10	12	13			13	44		24		
287.80		10	12	13			13	44											24		
287.75											6	12	8			8	36		24		
287.70											8	12	11			11	40		24		
287.70		6	12	8			8	36											24		
287.30		6	12	8			8	36											24		
287.30											6	12	8			8	36		24		
287.20	038-0131																				
286.70											8	12	11			11	40		24		
285.70											6	12	8			8	36		24		
285.70		6	12	8			8	36											24		
285.60		10	12	13			13	44											24		
285.55											6	12	8			8	36		24		
285.55		8	12	11			11	40											24		
PASSING LANE TOTALS				126			126	500		312	DRIVING LANE TOTALS				254	16	413	633	1732	103	696

MODEL: Default  
FILE NAME: C:\pwworking\woodshank\road\66P14.dgn

USER NAME = ronald.woodshank	DESIGNED - RW	REVISED -
DRAWN - RW	CHECKED - YP	REVISED -
PLOT SCALE = \$SCALES	DATE - 1/16/2024	REVISED -
PLOT DATE = 2/7/2024		

**STATE OF ILLINOIS  
DEPARTMENT OF TRANSPORTATION**

**SCHEDULES**

SCALE: SHEET 2 OF 3 SHEETS STA. TO STA.

F.A.I. RTE.	SECTION	COUNTY	TOTAL SHEETS	SHEET NO.
57	38(3-5)PP-3	IROQUOIS	13	7
CONTRACT NO. 66P14				
ILLINOIS FED. AID PROJECT				

**PAVEMENT MARKING SCHEDULES - NORTHBOUND LANES**

PASSING LANE				DRIVING LANE		
LOCATION	PATCH LENGTH	EPOXY PAVEMENT MARKING LINE - 4"	EPOXY PAVEMENT MARKING LINE - 6"	PATCH LENGTH	EPOXY PAVEMENT MARKING LINE - 4"	EPOXY PAVEMENT MARKING LINE - 6"
MILE MARKER	FOOT	FOOT	FOOT	FOOT	FOOT	FOOT
285.50				8	16	20
286.30	6	12	20			
286.60				6	12	20
286.60	8	16	20			
286.80				8	16	20
286.80	6	12	20			
287.25						
287.70				6	12	20
287.70	6	12	20			
287.75				8	16	20
287.75	8	12	20			
287.85				6	12	20
287.90				8	16	20
287.95				12	24	20
288.20						
288.25	6	12	20			
288.60				8	16	20
288.65				6	12	20
288.70				6	12	20
289.30				8	16	20
289.35						
290.10				6	12	20
290.20				8	16	20
290.20	6	12	20			
290.35	15	30	20			
290.35				120	240	20
290.70				6	12	20
290.70	6	12	20			
291.05				8	16	20
291.10	8	16	20			
291.20	8	16	20			
291.20	6	12	20			
291.50				6	12	20
291.60				8	16	20
291.60	8	16	20			
291.70				6	12	20
291.90				8	16	20
291.95				6	12	20
291.95	6	12	20			
292.05				6	12	20
292.05	8	16	20			
292.10				6	12	20
292.10	6	12	20			
292.15				6	12	20
292.20				8	16	20
292.20				6	12	20
292.25				15	30	20
292.40				6	12	20
292.50				8	16	20
292.50	8	16	20			
292.60				6	12	20
293.30				8	16	20
PASSING LANE TOTALS		246	340	DRIVING LANE TOTALS	694	660

**PAVEMENT MARKING SCHEDULES - SOUTHBOUND LANES**

PASSING LANE				DRIVING LANE		
LOCATION	PATCH LENGTH	EPOXY PAVEMENT MARKING LINE - 4"	EPOXY PAVEMENT MARKING LINE - 6"	PATCH LENGTH	EPOXY PAVEMENT MARKING LINE - 4"	EPOXY PAVEMENT MARKING LINE - 6"
MILE MARKER	FOOT	FOOT	FOOT	FOOT	FOOT	FOOT
295.07						
295.05				8	16	20
295.00				12	24	20
295.00				8	16	20
292.80				6	12	20
292.60				8	16	20
292.40				6	12	20
292.20				8	16	20
291.95				6	12	20
291.40				6	12	20
291.40	6	12	20			
291.35				8	16	20
291.30				6	12	20
291.30	8	16	20			
290.95				8	16	20
290.50				6	12	20
290.50	6	12	20			
290.40				6	12	20
290.35				8	16	20
290.35				8	16	20
290.20				6	12	20
290.20	8	16	20			
290.05				6	12	20
290.05	6	12	20			
289.90				8	16	20
289.70				6	12	20
289.60				8	16	20
289.50				6	12	20
289.35				310	620	20
289.30	6	12	20			
288.70	8	16	20			
288.30				10	20	20
287.80	10	20	20			
287.75				6	12	20
287.70				8	16	20
287.70	6	12	20			
287.30	6	12	20			
287.30				6	12	20
287.20						
286.70				8	16	20
285.70				6	12	20
285.70	6	12	20			
285.60	10	20	20			
285.55				6	12	20
285.55	8	16	20			
PASSING LANE TOTALS		188	280	DRIVING LANE TOTALS	1036	600

MODEL: Default  
FILE NAME: C:\pwworking\woodshank\100637027\66P14.dgn

USER NAME = ronald.woodshank	DESIGNED - RW	REVISED -
	DRAWN - RW	REVISED -
PLOT SCALE = \$SCALES	CHECKED - YP	REVISED -
PLOT DATE = 2/7/2024	DATE - 1/16/2024	REVISED -

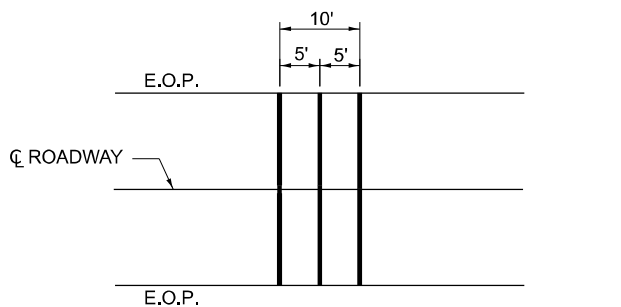
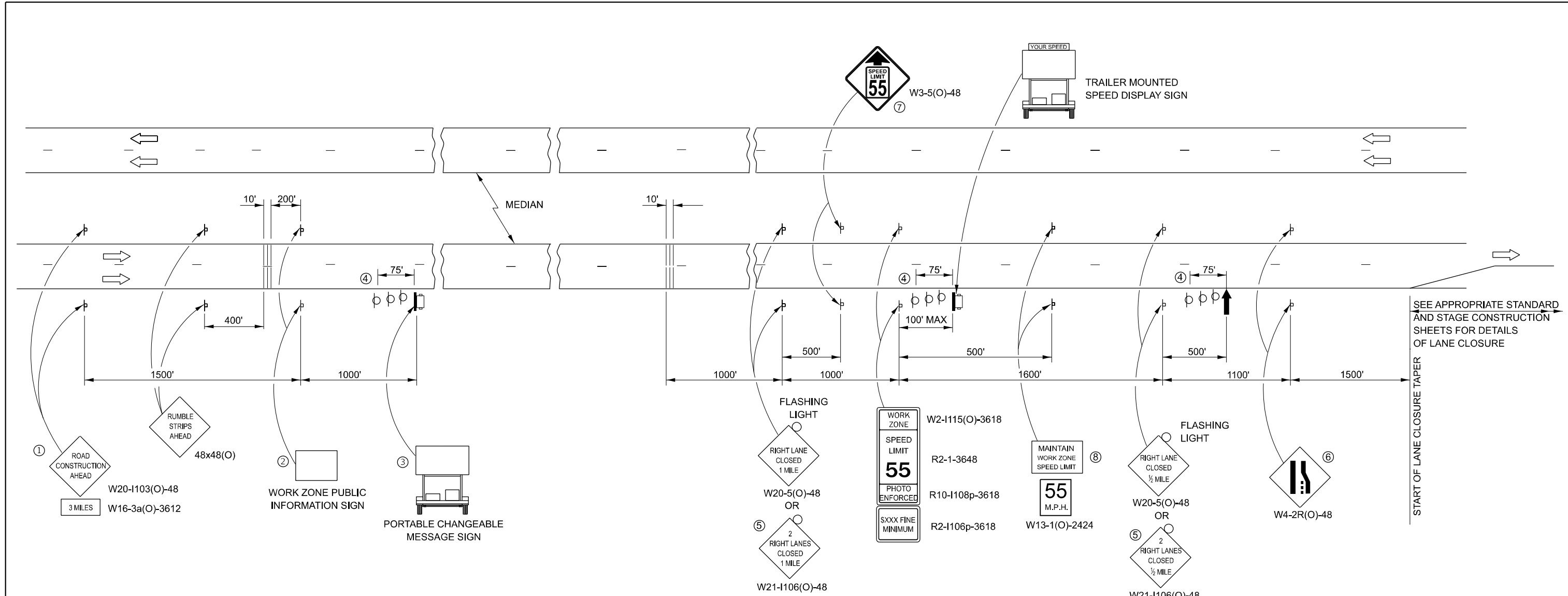
**STATE OF ILLINOIS  
DEPARTMENT OF TRANSPORTATION**

**SCHEDULES**

SCALE: SHEET 3 OF 3 SHEETS STA. TO STA.

F.A.I. RTE.	SECTION	COUNTY	TOTAL SHEETS	SHEET NO.
57	38(3-5)PP-3	IROQUOIS	13	8
CONTRACT NO. 66P14				
ILLINOIS FED. AID PROJECT				

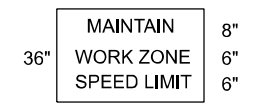




**TEMPORARY RUMBLE STRIP (SPECIAL)**  
**FOR PAYMENT PURPOSES, EACH LANE OF TRAFFIC SHALL BE CONSIDERED "ONE EACH".**

- ① THE ROAD CONSTRUCTION AHEAD SIGN SHALL BE LOCATED 3 MILES IN ADVANCE OF THE PROJECT LIMITS.
- ② THE MESSAGE AND SIZE OF THE WORK ZONE PUBLIC INFORMATION SIGN SHALL BE AS SPECIFIED BY THE DEPARTMENT.
- ③ TO BE PLACED IN THE MEDIAN WHEN FEASIBLE. THE MESSAGE BOARD SHALL BE USED TO DISPLAY STATUS OF LANES WITHIN THE PROJECT. THE PRIMARY MESSAGES SHALL BE:  
 "RIGHT LANE CLOSED" / " x MILES AHEAD"  
 "LEFT LANE CLOSED" / " x MILES AHEAD"  
 "ALL LANES OPEN"
- ④ THREE, TYPE II BARRICADES, DRUMS, OR VERTICAL BARRICADES AT 25' CENTERS.
- ⑤ THIS SIGN SHALL BE USED WHEN 2 LANES ARE CLOSED.
- ⑥ WHEN THE LEFT LANE IS CLOSED, SWITCH THESE TWO SIGNS AND THE DIRECTION OF THE MERGE ARROW.
- ⑦ THIS SIGN SHALL ONLY BE USED IF THE EXISTING SPEED LIMIT IS GREATER THAN 65 MPH.

⑧ 48"x36" FLUORESCENT ORANGE SIGN WITH BLACK LETTERS.  
 48"



"MAINTAIN WORK ZONE SPEED LIMIT" SIGN SHALL NOT BE PAID FOR SEPARATELY BUT SHALL BE INCLUDED IN THIS TRAFFIC CONTROL STANDARD.

- ↑ ARROW BOARD
- ☐ PORTABLE CHANGEABLE MESSAGE SIGN
- ⊥ SIGN
- ⊙ TYPE II BARRICADE, DRUM, OR VERTICAL BARRICADE WITH MONODIRECTIONAL FLASHING LIGHT
- ⊥ TEMPORARY RUMBLE STRIPS (SEE SPECIAL PROVISION)

**GENERAL NOTE:**

THIS STANDARD IS USED WHERE AT ANY TIME A LANE IS CLOSED ON A FREEWAY/EXPRESSWAY.

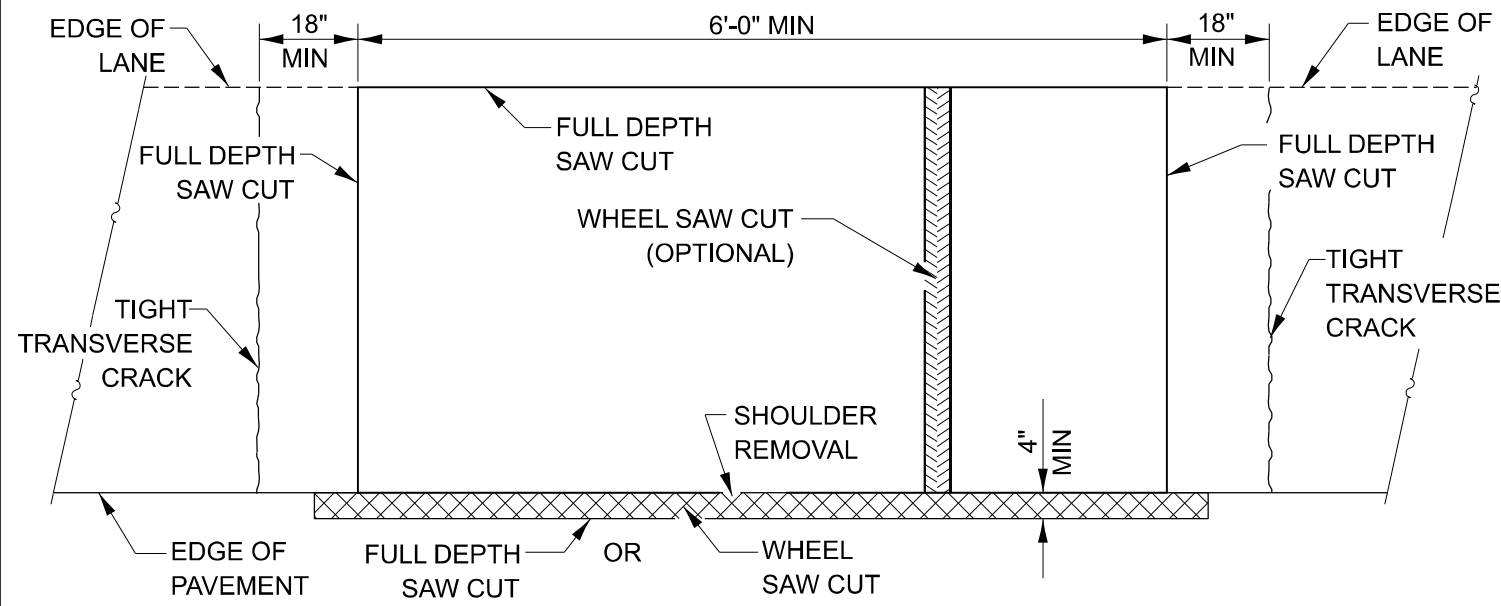
WHEN THE LEFT LANE IS CLOSED, LEFT LANE CLOSED SIGNS SHALL BE SUBSTITUTED FOR THE RIGHT LANE CLOSED SIGNS.

THE FIRST THREE SIGNS, RUMBLE STRIPS AND THE MESSAGE BOARD ARE STATIONARY. THE OTHER SIGNS AND ARROWBOARDS SHALL BE MOVED AS NECESSARY TO MAINTAIN THE REQUIRED DISTANCE FROM THE START OF THE LANE CLOSURE TAPER(S).

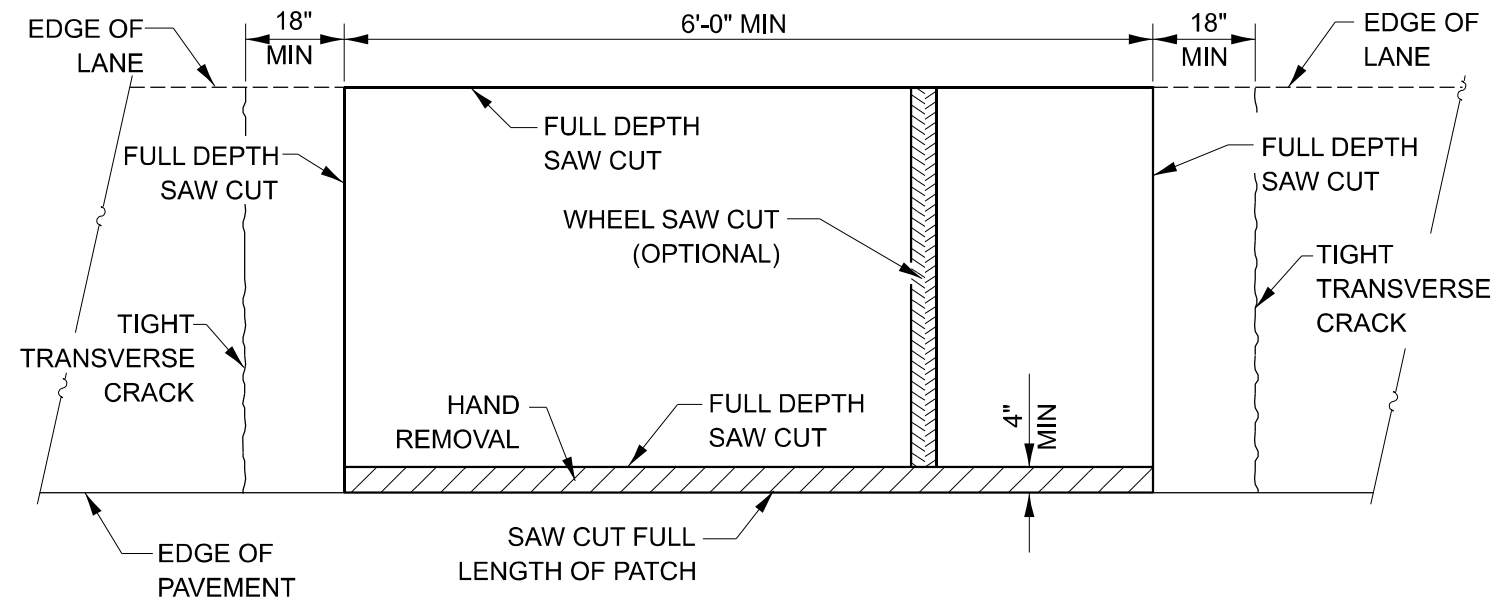
SEE SPECIAL PROVISIONS.

MODEL: Default  
 FILE NAME: c:\pwworking\woodshank\10637027166P14.dgn

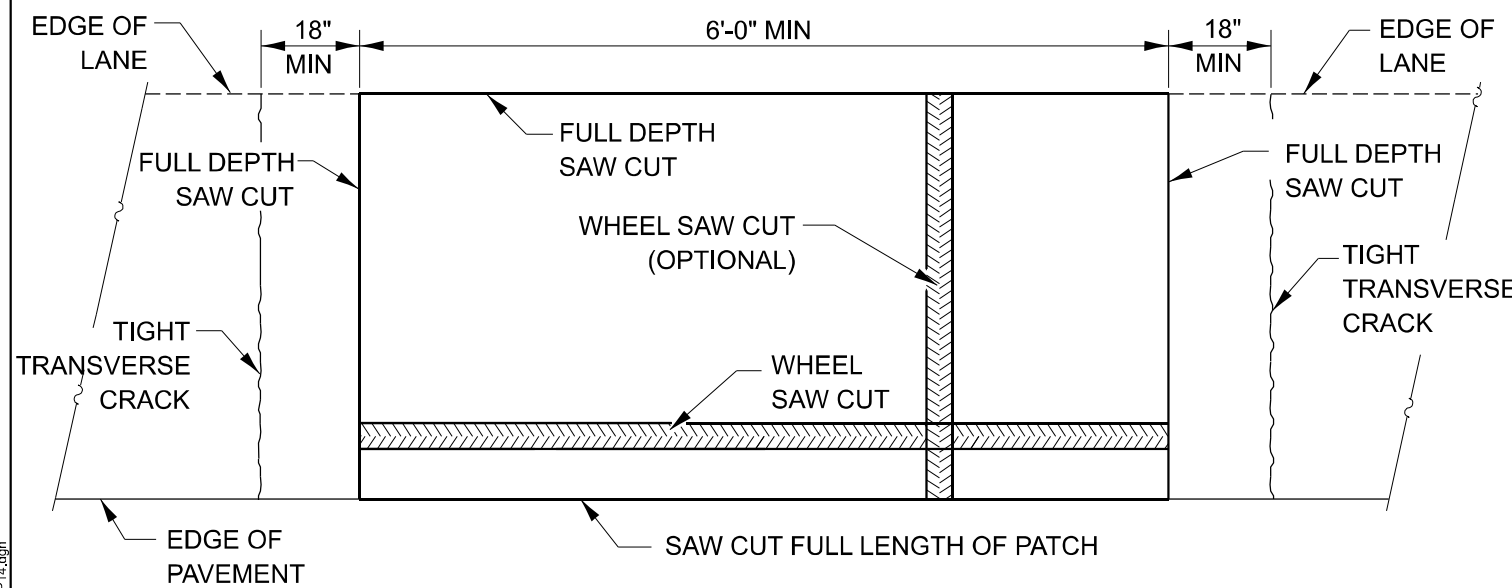
USER NAME = ronald.woodshank	DESIGNED - RW	REVISED -	<b>STATE OF ILLINOIS DEPARTMENT OF TRANSPORTATION</b>	<b>TRAFFIC CONTROL AND PROTECTION, STANDARD 701400</b>	F.A.I. RTE. = 57	SECTION = 38(3-5)PP-3	COUNTY = IROQUOIS	TOTAL SHEETS = 13	SHEET NO. = 9	
PLOT SCALE = \$SCALES	CHECKED - YP	REVISED -			SCALE:	SHEET 1 OF 1 SHEETS	STA. TO STA.	CONTRACT NO. 66P14		
PLOT DATE = 2/7/2024	DATE = 1/16/2024	REVISED -			ILLINOIS FED. AID PROJECT					



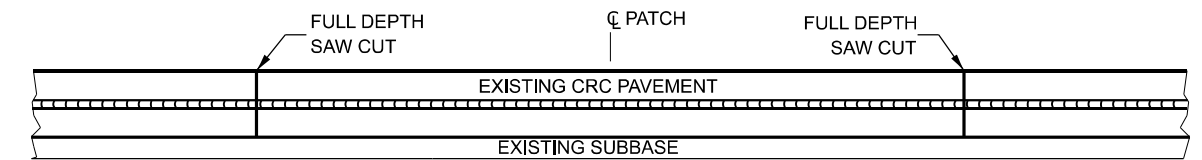
**PAVEMENT SAWING DETAIL**  
**(HMA SHOULDER)**



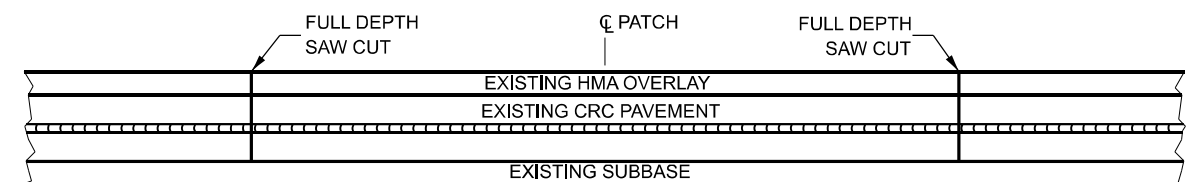
**PAVEMENT SAWING DETAIL**  
**(PCC SHOULDER)**



**ALTERNATE SAWING DETAIL**  
**(PCC SHOULDER)**



**EXISTING PAVEMENT WITHOUT HMA SURFACE**



**EXISTING PAVEMENT WITH HMA SURFACE**

**PAVEMENT SAWING DETAIL FOR CLASS A PATCHING**  
**(CRC PAVEMENT)**

MODEL: Default  
FILE NAME: c:\pwwork\woodshank\0967027166P14.dgn

USER NAME = ronald.woodshank	DESIGNED - RW	REVISED -
DRAWN - RW	CHECKED - YP	REVISED -
PLOT SCALE = \$\$SCALE\$	DATE - 1/16/2024	REVISED -
PLOT DATE = 2/7/2024		

**STATE OF ILLINOIS**  
**DEPARTMENT OF TRANSPORTATION**

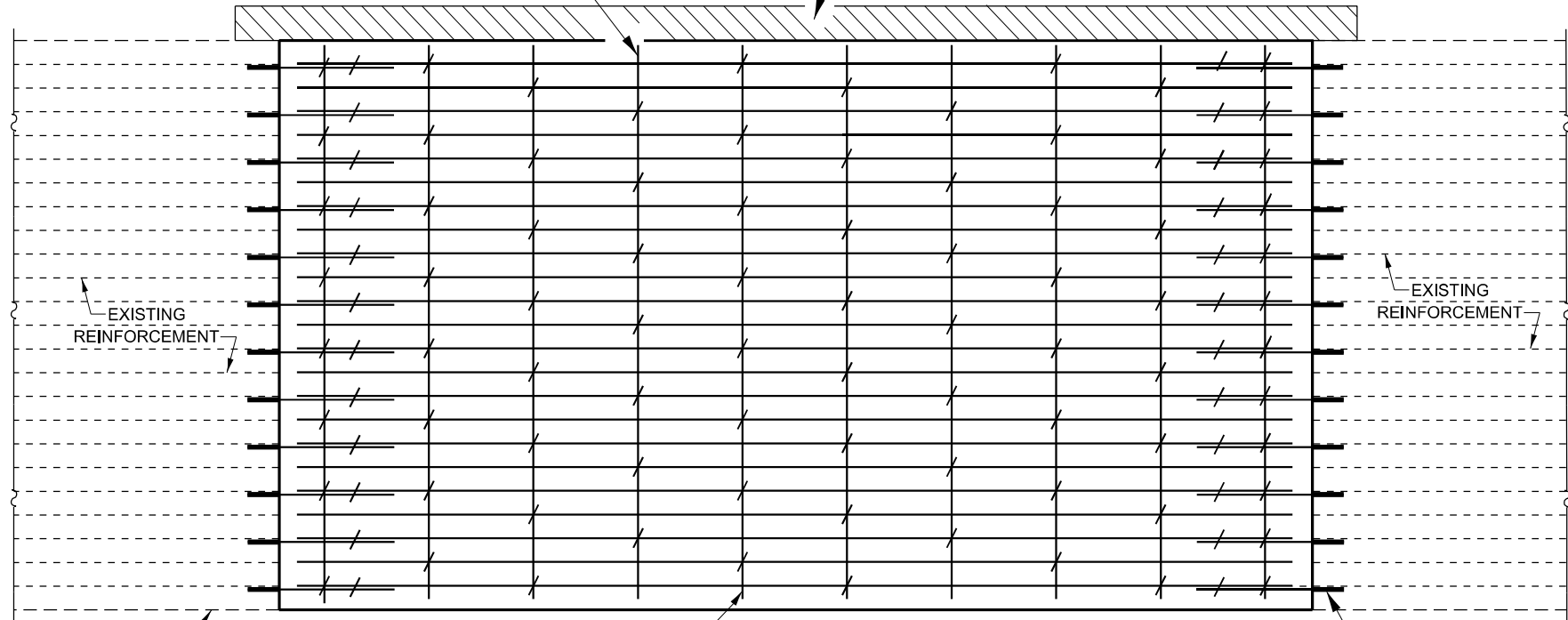
**CLASS A PATCHING DETAILS**

SCALE: SHEET 1 OF 3 SHEETS STA. TO STA.

F.A.I. RTE. 57	SECTION 38(3-5)PP-3	COUNTY IROQUOIS	TOTAL SHEETS 13	SHEET NO. 10
			CONTRACT NO. 66P14	
		ILLINOIS FED. AID PROJECT		

TRANSVERSE REBAR SHALL EXTEND TO OUTER LONGITUDINAL REBAR WHILE PROVIDING A MINIMUM 3" CLEARANCE FROM EXISTING PAVEMENT EDGE

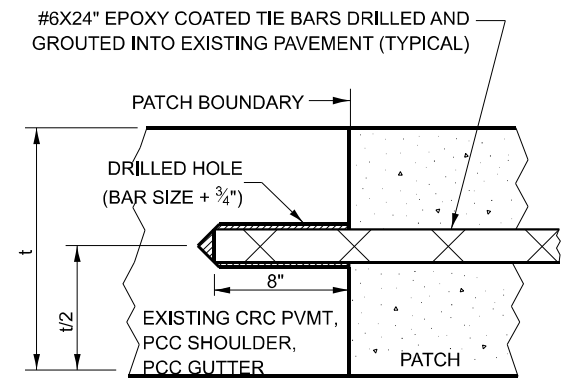
SHOULDER REMOVAL



\* NO. 6 TRANSVERSE BAR SHALL BE TIED TO LONGITUDINAL BAR.

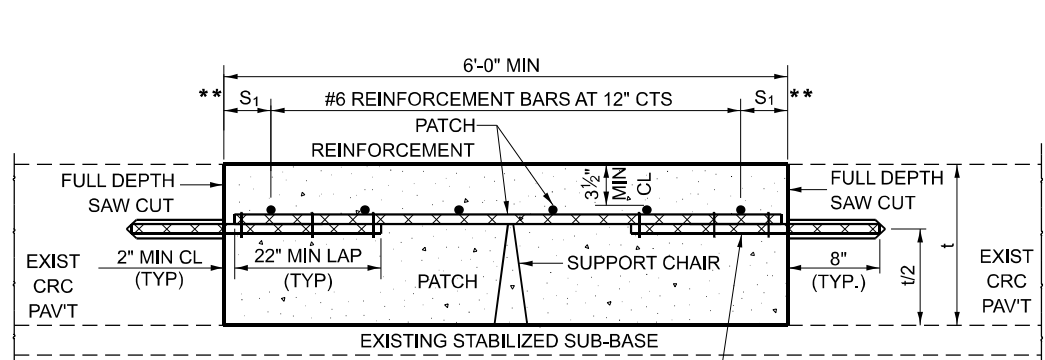
#8X32" EPOXY COATED TIE BARS. DRILLED AND GROUTED INTO EXISTING PAVEMENT (TYPICAL).

**PAVEMENT REINFORCEMENT DETAIL**



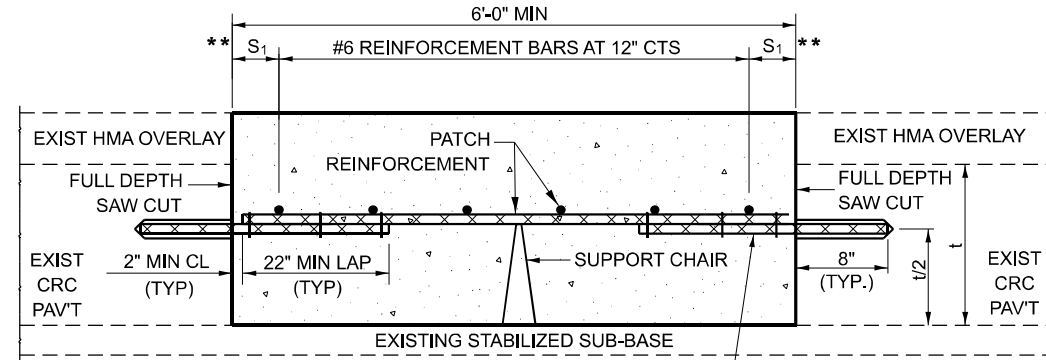
**LONGITUDINAL CONSTRUCTION JOINT**

PATCHES MORE THAN 20' IN LENGTH SHALL BE TIED TO ADJACENT PAVEMENT, PCC SHOULDERS OR PCC CURB AND GUTTER WITH #6X24" EPOXY COATED TIE BARS AT 36" CENTERS.



**WITHOUT HMA OVERLAY**

#8X32" EPOXY COATED TIE BARS DRILLED AND GROUTED INTO EXISTING PAVEMENT (TYPICAL)



**WITH HMA OVERLAY**

#8X32" EPOXY COATED TIE BARS DRILLED AND GROUTED INTO EXISTING PAVEMENT (TYPICAL)

**PATCHING DETAIL FOR CLASS A PATCHING (CRC PAVEMENT)**

NOTES:  
EXISTING LONGITUDINAL REINFORCEMENT:  
22 - #5 BARS AT 6 1/2" SPACING.

SPACING OF NEW LONGITUDINAL REINFORCEMENT SHALL MATCH THE SPACING OF EXISTING REINFORCEMENT AND SHALL BE TIED TOGETHER WITH A MINIMUM OF TWO TIES PER BAR.

TRANSVERSE CONSTRUCTION JOINTS: #8 X 32" EPOXY COATED TIE BAR SHALL BE DRILLED AND GROUTED INTO THE EXISTING PCC PAVEMENT AT A SPACING OF ± TWICE THE SPACING OF EXISTING LONGITUDINAL REINFORCEMENT BARS AND SHALL BE TIED TO PROPOSED LONGITUDINAL REINFORCEMENT WITH A MINIMUM OF TWO TIES PER BAR WHEN PRACTICAL.

\* EVERY THIRD INTERSECTION MUST BE TIED. WHEN THE MINIMUM CLEARANCE CANNOT BE OBTAINED WITH THE TRANSVERSE REBAR ON TOP, THEN THE TRANSVERSE REBAR SHALL BE TIED TO THE BOTTOM OF THE LONGITUDINAL REBAR.

\*\* VARIABLE: WHERE S1 IS 2 1/2" MIN. AND 12" MAX.

MODEL: Default  
FILE NAME: c:\pwworkspace\woodshank\100967027\66P14.dgn

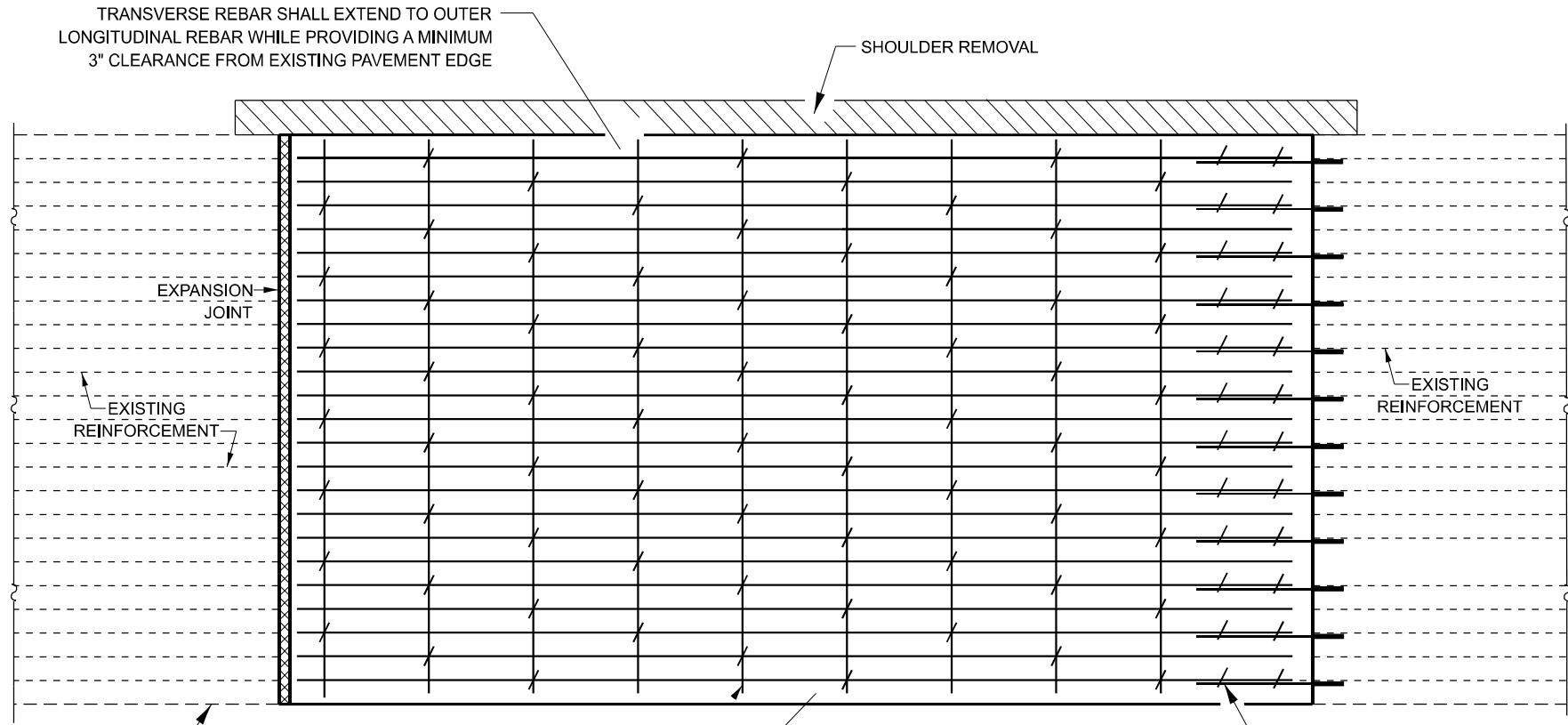
USER NAME = ronald.woodshank	DESIGNED - RW	REVISED -
DRAWN - RW	REVISIONS -	
PLOT SCALE = \$SCALES	CHECKED - YP	REVISED -
PLOT DATE = 2/19/2024	DATE - 1/16/2024	REVISED -

STATE OF ILLINOIS  
DEPARTMENT OF TRANSPORTATION

**CLASS A PATCHING DETAILS**

SCALE: SHEET 2 OF 3 SHEETS STA. TO STA.

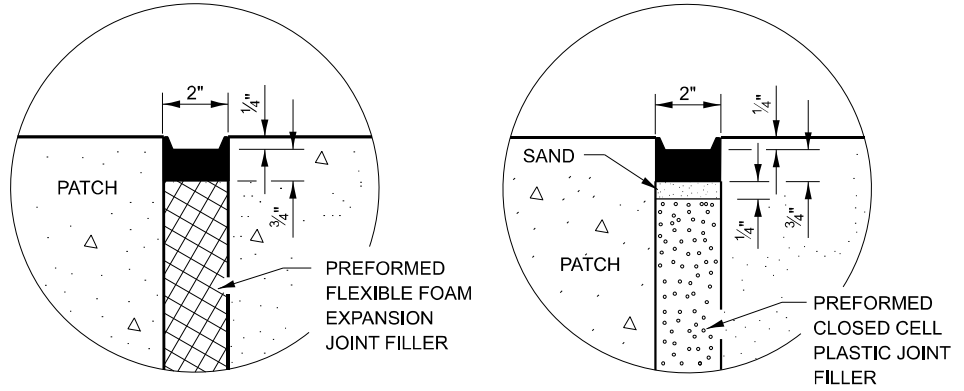
F.A.I. RTE. 57	SECTION 38(3-5)PP-3	COUNTY IROQUOIS	TOTAL SHEETS 13	SHEET NO. 11
			CONTRACT NO. 66P14	
		ILLINOIS FED. AID PROJECT		



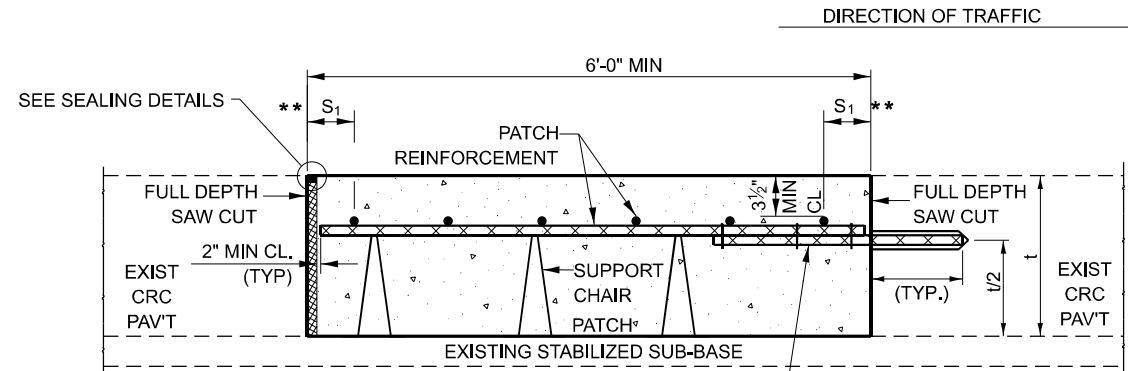
\* NO. 6 TRANSVERSE BAR SHALL BE TIED TO LONGITUDINAL BAR.

#8X32" EPOXY COATED TIE BARS, DRILLED AND GROUTED INTO EXISTING PAVEMENT (TYPICAL).

**PAVEMENT REINFORCEMENT DETAIL**

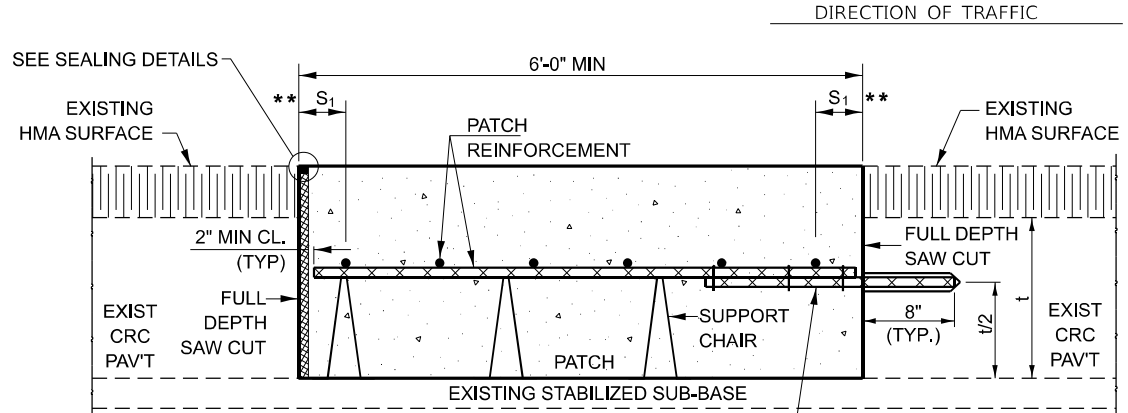


**SEALING DETAILS**



**WITHOUT HMA OVERLAY**

#8X32" EPOXY COATED TIE BARS DRILLED AND GROUTED INTO EXISTING PAVEMENT (TYPICAL). MINIMUM 22" LAP WITH PATCH REINFORCEMENT.



**WITH HMA OVERLAY**

#8X32" EPOXY COATED TIE BARS DRILLED AND GROUTED INTO EXISTING PAVEMENT (TYPICAL). MINIMUM 22" LAP WITH PATCH REINFORCEMENT.

**CLASS A PATCH WITH EXPANSION JOINT**

MODEL: Default  
FILE NAME: c:\pwworking\woodshank\096702766P14.dgn

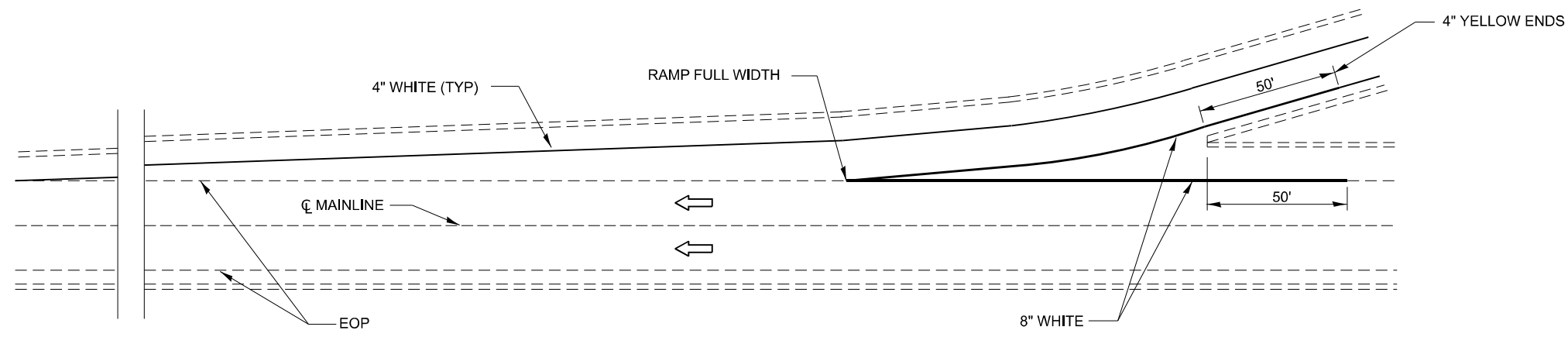
USER NAME = ronald.woodshank	DESIGNED - RW	REVISED -
DRAWN - RW	REVISED -	
PLOT SCALE = \$SCALE\$	CHECKED - YP	REVISED -
PLOT DATE = 2/19/2024	DATE - 1/16/2024	REVISED -

**STATE OF ILLINOIS  
DEPARTMENT OF TRANSPORTATION**

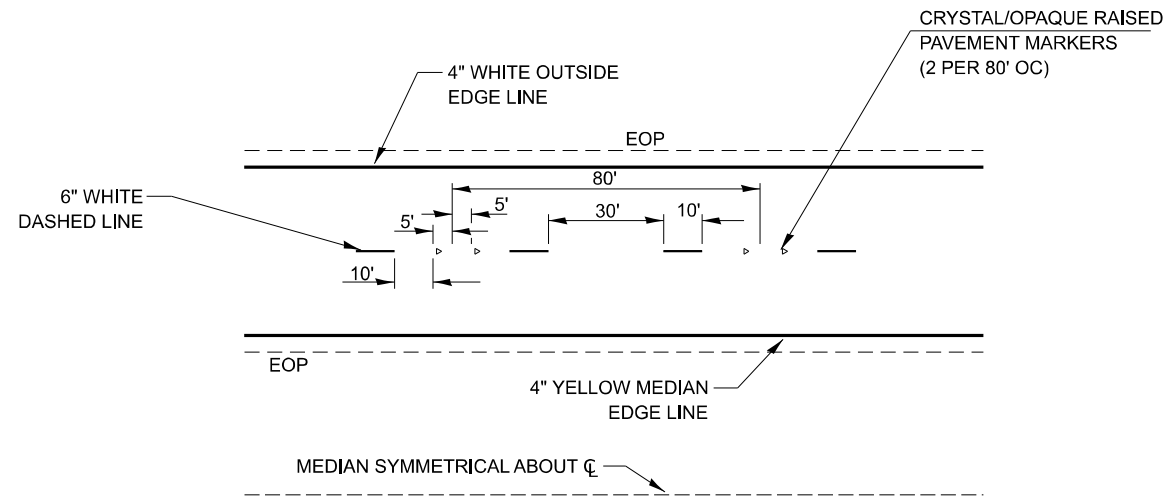
**CLASS A PATCHING DETAILS**

SCALE: SHEET 3 OF 3 SHEETS STA. TO STA.

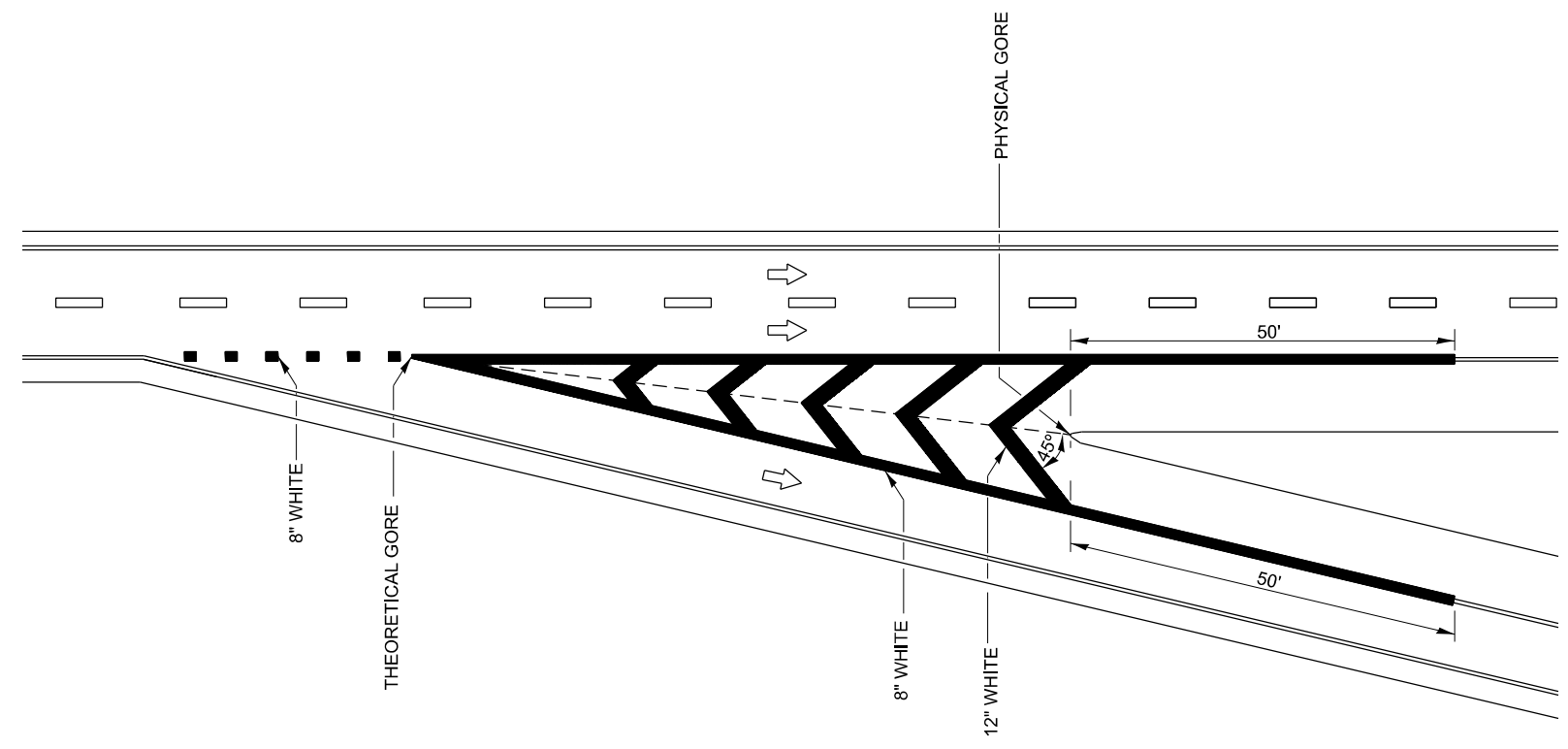
F.A.I. RTE. 57	SECTION 38(3-5)PP-3	COUNTY IROQUOIS	TOTAL SHEETS 13	SHEET NO. 12
			CONTRACT NO. 66P14	
ILLINOIS FED. AID PROJECT				



**TYPICAL PAVEMENT MARKING FOR ENTRANCE RAMP TERMINALS**



**TYPICAL PAVEMENT MARKINGS**



**EXIT RAMP GORE DETAIL**

MODEL: Default  
FILE NAME: c:\pwworking\woodshank\1027166P14.dgn

USER NAME = ronald.woodshank	DESIGNED - RW	REVISED -
DRAWN - RW	CHECKED - YP	REVISED -
PLOT SCALE = \$SCALE\$	DATE - 1/16/2024	REVISED -
PLOT DATE = 2/7/2024		

STATE OF ILLINOIS  
DEPARTMENT OF TRANSPORTATION

PAVEMENT MARKING	
SCALE:	SHEET 1 OF 1 SHEETS STA. TO STA.

F.A.I. RTE.	SECTION	COUNTY	TOTAL SHEETS	SHEET NO.
57	38(3-5)PP-3	IROQUOIS	13	13
CONTRACT NO. 66P14				
ILLINOIS FED. AID PROJECT				