

STATE OF ILLINOIS
DEPARTMENT OF TRANSPORTATION

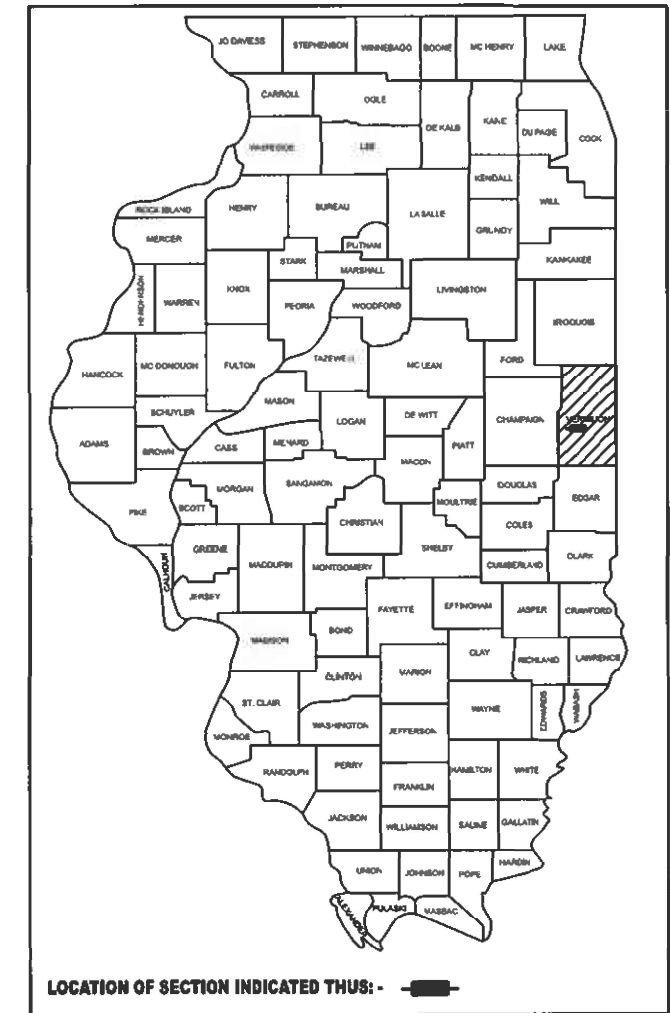
F.A.I. RTE.	SECTION	COUNTY	TOTAL SHEETS	SHEET NO.
74	(92-9,92-10)PP	VERMILION	23	1
		ILLINOIS	CONTRACT NO. 70H25	

FOR INDEX OF SHEETS, SEE SHEET NO. 2
FOR SUMMARY OF QUANTITIES, SEE SHEET NO. 3-4

PROPOSED
HIGHWAY PLANS

FAI ROUTE 74 (I 74)
SECTION (92-9,92-10)PP
PATCHING
VERMILION COUNTY

D-95-023-24

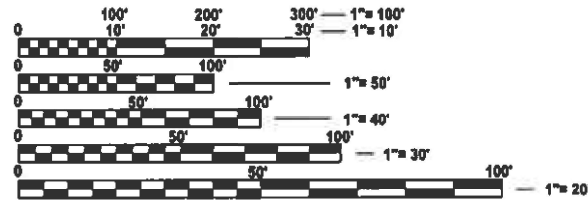


CURRENT TRAFFIC DATA

FAI 74 (I 74)
2024 ADT = 25,200
PU&PC% = 66.4
SU% = 4.2
MU% = 29.4

TRAFFIC DATA LOCATIONS
I-74 FROM IL 49 TO MIDDLE FORK
VERMILION RIVER W. OF DANVILLE
IN VERMILION COUNTY

C-95-043-24
ILL 49(N) TO MIDDLE FORK VERMILION RIVER W OF DANVILLE



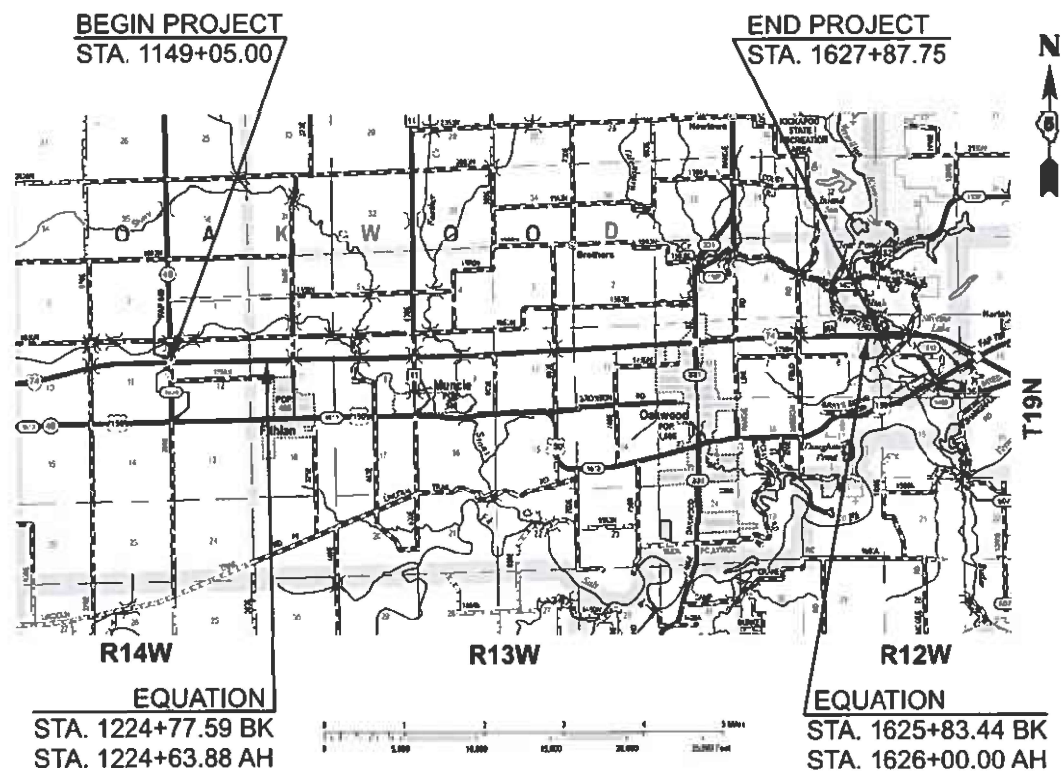
FULL SIZE PLANS HAVE BEEN PREPARED USING STANDARD ENGINEERING SCALES. REDUCED SIZED PLANS WILL NOT CONFORM TO STANDARD SCALES. IN MAKING MEASUREMENTS ON REDUCED PLANS, THE ABOVE SCALES MAY BE USED.

J.U.L.I.E.
JOINT UTILITY LOCATION INFORMATION FOR EXCAVATION
1-800-892-0123
OR 811

TOWNSHIP: OAKWOOD

PROJECT ENGINEER: RYAN T. CARROLL
PROJECT MANAGER: CLARE B. DIETZ
PROJECT DESIGNER: TIANYI SUN
PHONE NUMBER: (217)465-4181

CONTRACT NO. 70H25



GROSS LENGTH = 47,882.75 FT. = 9.068 MILE
NET LENGTH = 47,879.90 FT. = 9.068 MILE

STATE OF ILLINOIS
DEPARTMENT OF TRANSPORTATION

SUBMITTED 3/18 2024
Kenel A. Barnett sww
REGIONAL ENGINEER

May 10, 2024 *[Signature]*
ENGINEER OF DESIGN AND ENVIRONMENT

May 10, 2024 *[Signature]*
DIRECTOR OF HIGHWAYS PROJECT IMPLEMENTATION

PRINTED BY THE AUTHORITY
OF THE STATE OF ILLINOIS

INDEX OF SHEETS

COVER SHEET	1
INDEX OF SHEETS	2
LIST OF HIGHWAY STANDARDS	2
GENERAL NOTES	2
SUMMARY OF QUANTITIES	3 TO 4
EXISTING TYPICAL SECTIONS	5 TO 10
SCHEDULE OF QUANTITIES	11 TO 12
OAKWOOD INTERCHANGE RAMPS PATCH DETAILS	13 TO 16
DETOUR PLANS	17 TO 22
MEDIAN DETAILS	23

LIST OF STANDARDS

STANDARD NO.	DESCRIPTION
000001-08	STANDARD SYMBOLS, ABBREVIATIONS, AND PATTERNS
001006	DECIMAL OF AN INCH AND OF A FOOT
442101-09	CLASS B PATCHES
701101-05	OFF-RD OPERATIONS, MULTILANE, 15' (4.5 m) TO 24" (600 mm) FROM PAVEMENT EDGE
701106-02	OFF-RD OPERATIONS, MULTILANE, MORE THAN 15' (4.5 m) AWAY
701400-12	APPROACH TO LANE CLOSURE, FREEWAY/EXPRESSWAY
701401-13	LANE CLOSURE, FREEWAY/EXPRESSWAY
701411-09	LANE CLOSURE, MULTILANE, AT ENTRANCE OR EXIT RAMP, FOR SPEEDS ≥ 45MPH
701428-01	TRAFFIC CONTROL, SETUP AND REMOVAL, FREEWAY/EXPRESSWAY
701451-05	RAMP CLOSURE FREEWAY/EXPRESSWAY
701901-09	TRAFFIC CONTROL DEVICES
701001-02	OFF-RD OPERATIONS, 2L, 2W, MORE THAN 15' (4.5m) AWAY
701006-05	OFF-RD OPERATIONS, 2L, 2W, 15' (4.5 m) TO 24" (600 mm) FROM PAVEMENT EDGE
701201-05	LANE CLOSURE, 2L, 2W, DAY ONLY, FOR SPEEDS >= 45 MPH

GENERAL NOTES

G.N.-100A
ELECTRONIC FILES AND/OR ELECTRONIC SURVEY INFORMATION INCLUDING CADD FILES WILL NOT BE AVAILABLE TO THE CONTRACTOR.

G.N.-440B
THE EXISTING TIE BARS BETWEEN THE EXISTING PAVEMENT AND EXISTING MEDIANS, GUTTERS AND/OR COMBINATION CURB AND GUTTERS THAT ARE FOUND SUITABLE FOR REUSE SHALL BE CLEANED, STRAIGHTENED AND INCORPORATED INTO THE NEW CONSTRUCTION. ANY EXISTING TIE BARS THAT ARE FOUND UNSUITABLE TO BE INCORPORATED INTO THE PROPOSED CONSTRUCTION DUE TO EXCESSIVE RUSTING OR DISTRESS SHALL BE REMOVED FLUSH WITH THE FACE OF THE EXISTING CONCRETE AND DISPOSED OF OUTSIDE THE LIMITS OF THE RIGHT-OF-WAY IN ACCORDANCE WITH ARTICLE 202.03 OF THE STANDARD SPECIFICATIONS.

THIS WORK WILL NOT BE PAID FOR SEPARATELY BUT SHALL BE CONSIDERED INCLUDED IN THE VARIOUS REMOVAL PAY ITEMS AND NO ADDITIONAL COMPENSATION WILL BE ALLOWED.

COMMITMENTS

NONE

MODEL: GENNOTE (Sheet)
FILE NAME: c:\pwworking\illinois.gov\lanyl.sun@illinois.gov\d095886d570h25_SHT_GENNOTE.dgn

USER NAME = Tlanyl.Sun	DESIGNED -	REVISED -	STATE OF ILLINOIS DEPARTMENT OF TRANSPORTATION	INDEX OF SHEETS, HIGHWAY STANDARDS & GENERAL NOTES	F.A.I RTE.	SECTION	COUNTY	TOTAL SHEETS	SHEET NO.	
	DRAWN -	REVISED -			74	(92-9,92-10)PP	VERMILION	23	2	
	CHECKED -	REVISED -			CONTRACT NO. 70H25					
PLOT DATE = 3/14/2024	DATE -	REVISED -			SCALE:	SHEET 1	OF 1	SHEETS	STA.	TO STA.
					ILLINOIS FED. AID PROJECT					

SUMMARY OF QUANTITIES

LOCATION OF WORK: FAI 74 (I-74)
 INTERSTATE
 RURAL
 1149+05.00
 1627+87.75
 VERMILION
 FUNDING BREAKOUT: 100% STATE
 CONSTRUCTION TYPE CODE: 0006

CODE NO.	ITEM	UNIT	TOTAL QUANTITY	ROADWAY QUANTITY
44200050	WELDED WIRE REINFORCEMENT	SQ YD	2,901.00	2,901.00
44201000	CLASS B PATCHES, TYPE IV, 12 INCH	SQ YD	2,711.00	2,711.00
44201031	CLASS B PATCHES, TYPE II, 15 INCH	SQ YD	128.00	128.00
44201035	CLASS B PATCHES, TYPE III, 15 INCH	SQ YD	59.00	59.00
44201037	CLASS B PATCHES, TYPE IV, 15 INCH	SQ YD	93.00	93.00
44201047	CLASS B PATCHES, TYPE III, 16 INCH	SQ YD	39.00	39.00
44201299	DOWEL BARS 1 1/2"	EACH	2,172.00	2,172.00
44213200	SAW CUTS	FOOT	4,079.00	4,079.00
44213204	TIE BARS 3/4"	EACH	311.00	311.00
67100100	MOBILIZATION	L SUM	1.00	1.00
70100420	TRAFFIC CONTROL AND PROTECTION, STANDARD 701411	EACH	8.00	8.00
70100450	TRAFFIC CONTROL AND PROTECTION, STANDARD 701201	L SUM	1.00	1.00
70100800	TRAFFIC CONTROL AND PROTECTION, STANDARD 701401	L SUM	1.00	1.00
70100820	TRAFFIC CONTROL AND PROTECTION, STANDARD 701451	L SUM	1.00	1.00
* DENOTES SPECIALTY ITEM				

MODEL: SOQ (Sheet)
 FILE NAME: c:\p\work\project\illinois.gov\ianyi.sun@illinois.gov\d0958866\0570H25_SHT_SOQ.dgn

USER NAME = Tianyi.Sun	DESIGNED -	REVISED -
	DRAWN -	REVISED -
	CHECKED -	REVISED -
PLOT DATE = 3/14/2024	DATE -	REVISED -

**STATE OF ILLINOIS
 DEPARTMENT OF TRANSPORTATION**

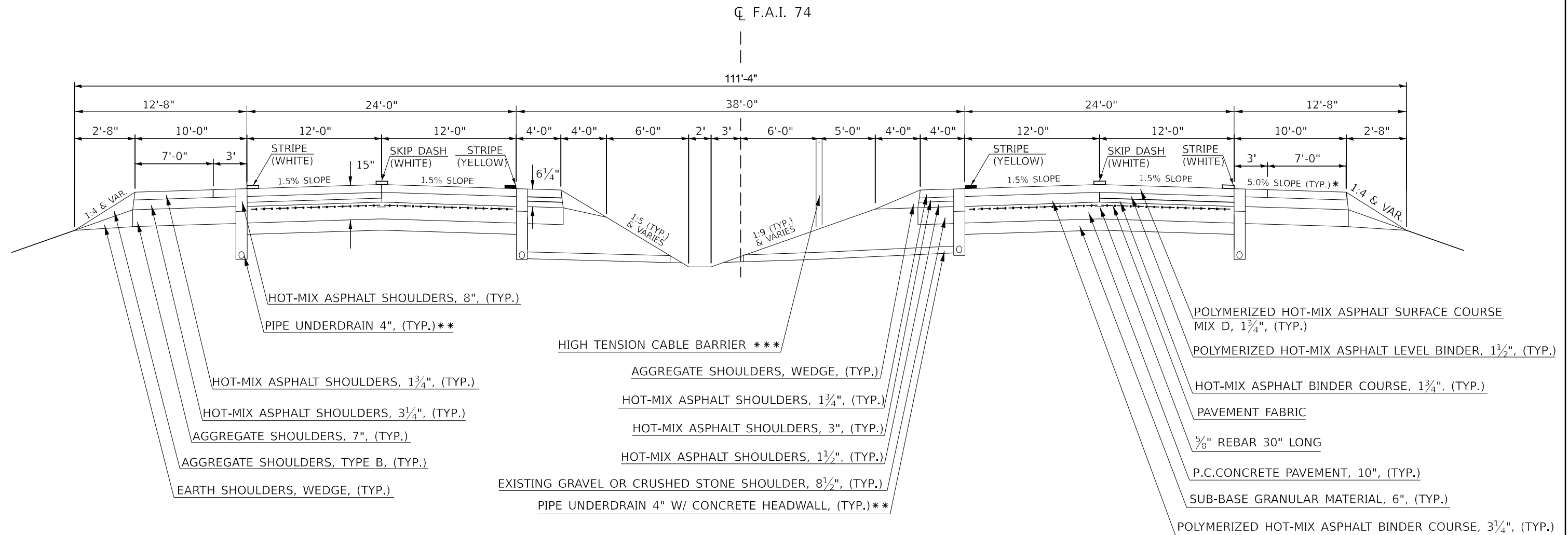
SUMMARY OF QUANTITIES

SCALE: SHEET 1 OF 2 SHEETS STA. TO STA.

F.A.I RTE.	SECTION	COUNTY	TOTAL SHEETS	SHEET NO.
74	(92-9,92-10)PP	VERMILION	23	3
CONTRACT NO. 70H25				
ILLINOIS FED. AID PROJECT				

EXISTING TYPICAL CROSS SECTION ②

- ① STATION 1180+00.00 TO STATION 1183+97.50 ③
- ③ STATION 1241+21.60 TO STATION 1264+60.00 ③
- ③ STATION 1286+13.00 TO STATION 1299+95.50 ③
- ③ STATION 1320+69.33 TO STATION 1338+42.50 ③
- ③ STATION 1413+64.00 TO STATION 1470+17.50 ③



* ALLOWABLE MINIMUM SHOULDER SLOPE = 4.0%
ALLOWABLE MINIMUM SHOULDER SLOPE = 6.0%

** PIPE UNDERDRAIN 4"
STATION 1224+97.00 TO STATION 1583+97.00

** PIPE UNDERDRAIN 6"
STATION 1583+97.00 TO STATION 1627+87.75

*** HIGH TENSION CABLE MEDIAN BARRIER LOCATION ALTERNATES BETWEEN EASTBOUND AND WESTBOUND SIDE

MODEL: typical_sht-1 [Sheet]
FILE NAME: c:\p\work\70h25\illinois.gov\0958986\0570H25_SHT_TYPICAL.dgn

USER NAME = Tianyi.Sun	DESIGNED -	REVISED -
	DRAWN -	REVISED -
PLOT SCALE = 0.16666833' / in.	CHECKED -	REVISED -
PLOT DATE = 3/14/2024	DATE -	REVISED -

**STATE OF ILLINOIS
DEPARTMENT OF TRANSPORTATION**

EXISTING TYPICAL SECTIONS

SCALE: SHEET 2 OF 6 SHEETS STA. TO STA.

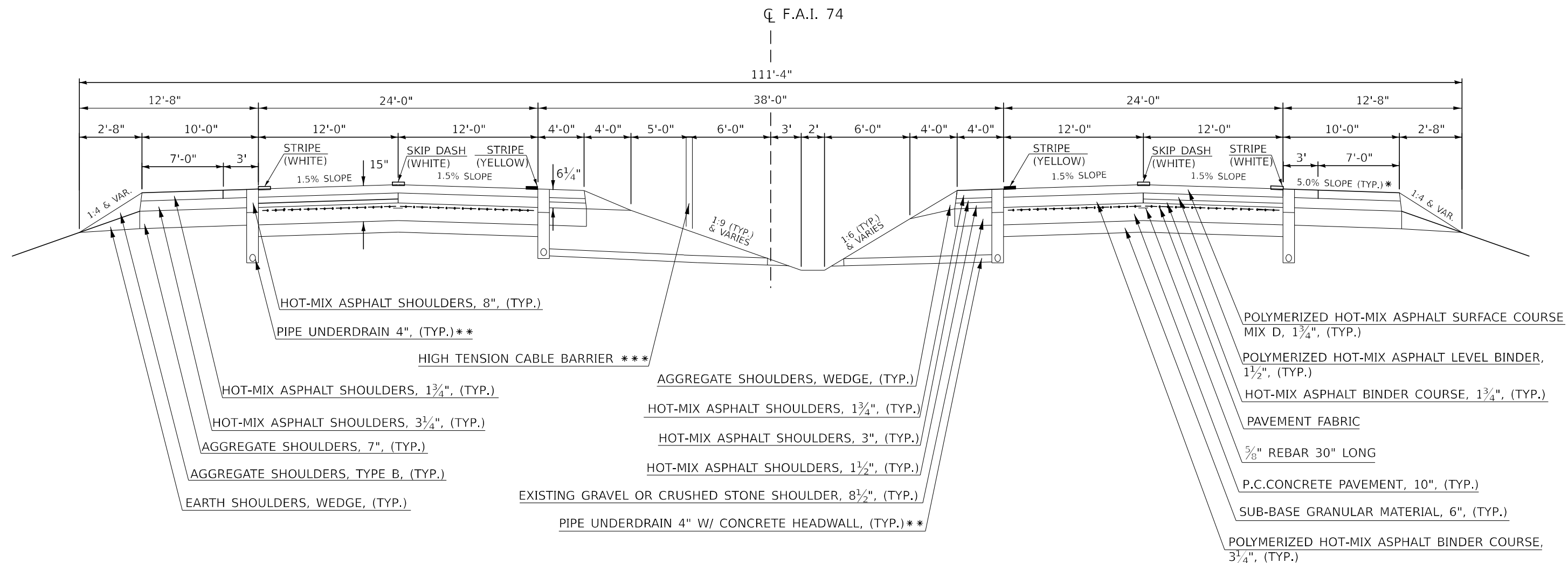
F.A.I. RTE.	SECTION	COUNTY	TOTAL SHEETS	SHEET NO.
74	(92-9,92-10)PP	VERMILION	23	6
CONTRACT NO. 70H25				
ILLINOIS FED. AID PROJECT				

EXISTING TYPICAL CROSS SECTION ③

STATION EQUATION:

STATION 1224+77.59 (BK) = STATION 1224+63.88 (AH)

- ② STATION 1183+97.50 TO STATION 1224+77.59 (BK)
- (AH) STATION 1224+63.88 TO STATION 1241+21.60 ②
- ② STATION 1264+60.00 TO STATION 1286+13.00 ②
- ② STATION 1299+95.50 TO STATION 1320+69.33 ②
- ② STATION 1338+42.50 TO STATION 1413+64.00 ②
- ② STATION 1470+17.50 TO STATION 1507+04.00 ④



* ALLOWABLE MINIMUM SHOULDER SLOPE = 4.0%
ALLOWABLE MINIMUM SHOULDER SLOPE = 6.0%

** PIPE UNDERDRAIN 4"
STATION 1224+97.00 TO STATION 1583+97.00
** PIPE UNDERDRAIN 6"
STATION 1583+97.00 TO STATION 1627+87.75

*** HIGH TENSION CABLE MEDIAN BARRIER LOCATION ALTERNATES BETWEEN EASTBOUND AND WESTBOUND SIDE

MODEL: typical_sht2 (Sheet)
FILE NAME: c:\p\work\70h25\illinois.gov\0958866\0570H25_SHT_TYPICAL.dgn

USER NAME = Tianyi.Sun	DESIGNED -	REVISED -
	DRAWN -	REVISED -
PLOT SCALE = 0.16666633' / in.	CHECKED -	REVISED -
PLOT DATE = 3/14/2024	DATE -	REVISED -

**STATE OF ILLINOIS
DEPARTMENT OF TRANSPORTATION**

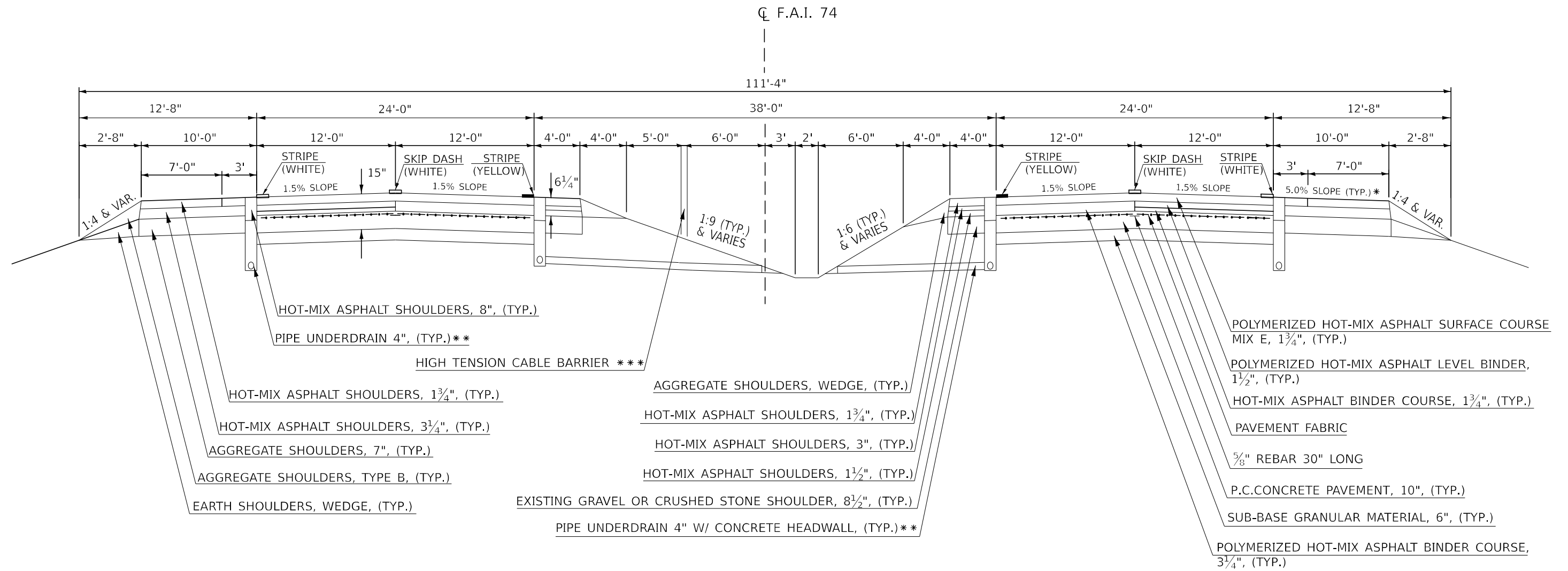
EXISTING TYPICAL SECTIONS

SCALE: SHEET 3 OF 6 SHEETS STA. TO STA.

F.A.I. RTE.	SECTION	COUNTY	TOTAL SHEETS	SHEET NO.
74	(92-9,92-10)PP	VERMILION	23	7
CONTRACT NO. 70H25				
ILLINOIS FED. AID PROJECT				

EXISTING TYPICAL CROSS SECTION ④

③ STATION 1507+04.00 TO STATION 1616+00.00 ⑤



** PIPE UNDERDRAIN 4"
 STATION 1224+97.00 TO STATION 1583+97.00

** PIPE UNDERDRAIN 6"
 STATION 1583+97.00 TO STATION 1627+87.75

*** HIGH TENSION CABLE MEDIAN BARRIER LOCATION ALTERNATES BETWEEN EASTBOUND AND WESTBOUND SIDE

MODEL: typical_sht3 (Sheet)
 FILE NAME: c:\p\work\70h25\illinois.gov\1507+04.00\1507+04.00_SHT_TYPICAL.dgn

USER NAME = Tianyi.Sun	DESIGNED -	REVISED -
	DRAWN -	REVISED -
PLOT SCALE = 0.16666633' / in.	CHECKED -	REVISED -
PLOT DATE = 3/14/2024	DATE -	REVISED -

**STATE OF ILLINOIS
 DEPARTMENT OF TRANSPORTATION**

EXISTING TYPICAL SECTIONS

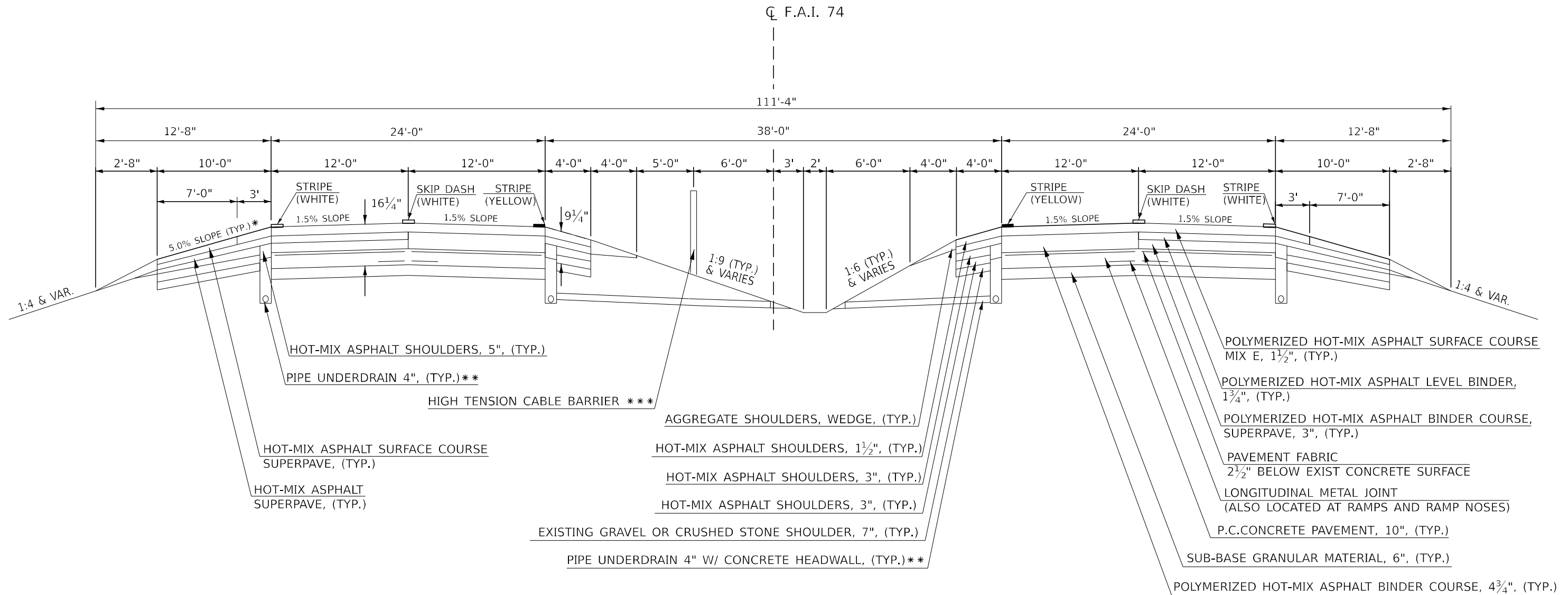
SCALE: SHEET 4 OF 6 SHEETS STA. TO STA.

F.A.I. RTE.	SECTION	COUNTY	TOTAL SHEETS	SHEET NO.
74	(92-9,92-10)PP	VERMILION	23	8
CONTRACT NO. 70H25				
ILLINOIS FED. AID PROJECT				

EXISTING TYPICAL CROSS SECTION ⑤

STATION EQUATION:
 STATION 1625+83.44 (BK) = STATION 1626+00.00 (AH)

④ STATION 1616+00.00 TO STATION 1625+83.44 (BK)
 (AH) STATION 1626+00.00 TO STATION 1627+87.75



- * ALLOWABLE MINIMUM SHOULDER SLOPE = 4.0%
 ALLOWABLE MINIMUM SHOULDER SLOPE = 6.0%
- ** PIPE UNDERDRAIN 4"
 STATION 1224+97.00 TO STATION 1583+97.00
- ** PIPE UNDERDRAIN 6"
 STATION 1583+97.00 TO STATION 1627+87.75
- *** HIGH TENSION CABLE MEDIAN BARRIER LOCATION ALTERNATES BETWEEN EASTBOUND AND WESTBOUND SIDE

MODEL: typical_sht1.dwg [Sheet]
 FILE NAME: c:\p\work\70h25\illinois.gov\16258344\1625_SHT_TYPICAL.dwg

USER NAME = Tianyi.Sun	DESIGNED -	REVISED -
	DRAWN -	REVISED -
PLOT SCALE = 0.16666633' / in.	CHECKED -	REVISED -
PLOT DATE = 3/14/2024	DATE -	REVISED -

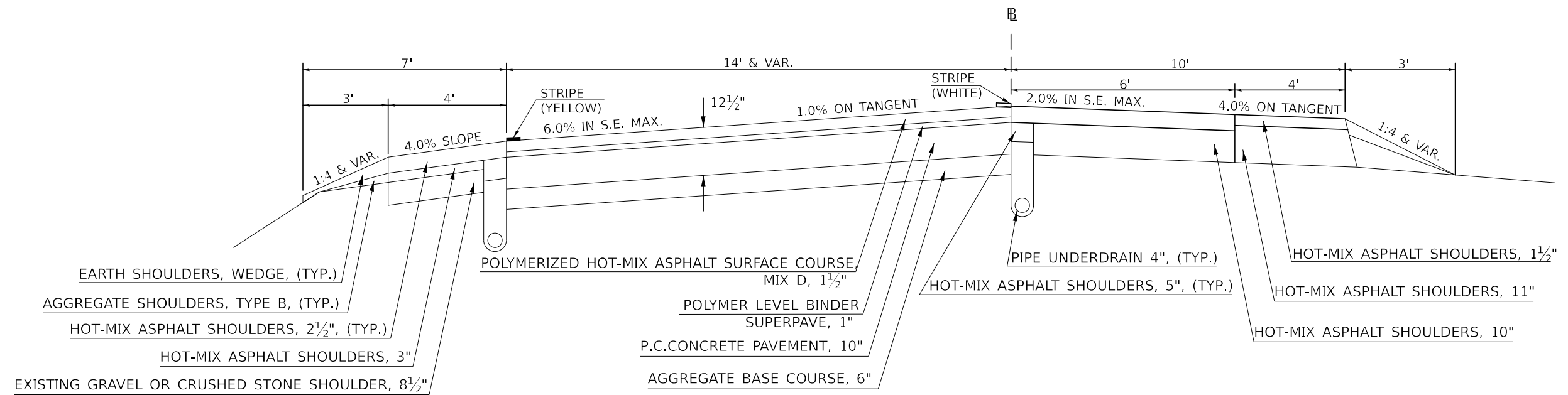
**STATE OF ILLINOIS
 DEPARTMENT OF TRANSPORTATION**

EXISTING TYPICAL SECTIONS			
SCALE:	SHEET 5 OF 6 SHEETS	STA.	TO STA.

F.A.I. RTE.	SECTION	COUNTY	TOTAL SHEETS	SHEET NO.
74	(92-9,92-10)PP	VERMILION	23	9
CONTRACT NO. 70H25				
ILLINOIS FED. AID PROJECT				

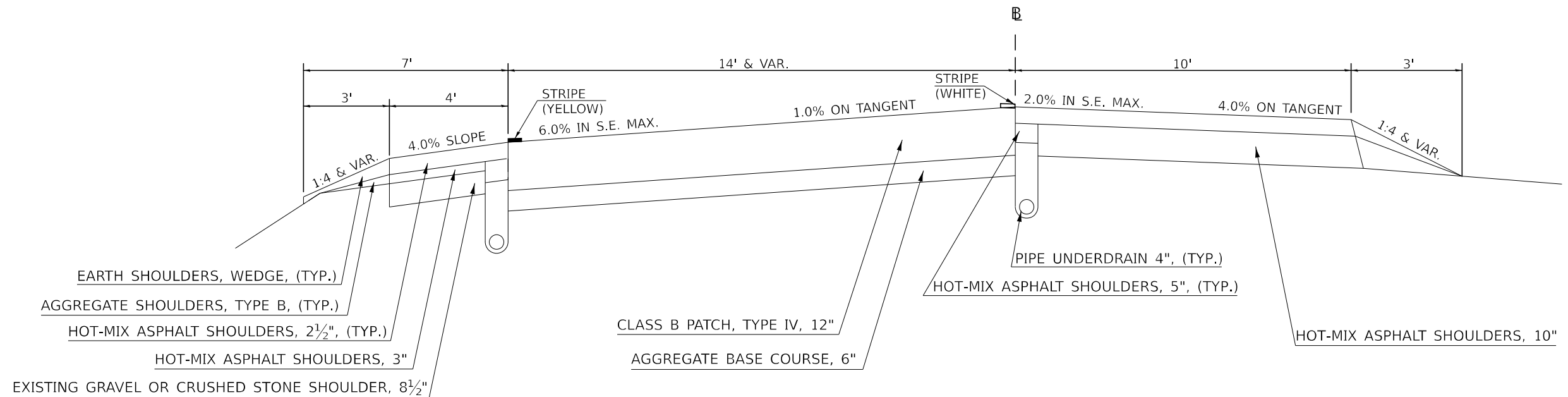
EXISTING TYPICAL CROSS SECTION ⑥
I-74 & FAS 331 (CH 10) INTERCHANGE RAMPS

RAMP A STA 94+90.00 TO STA 105+15.23 ⑦
 RAMP B STA 105+00.00 TO STA 119+89.98
 RAMP C STA 94+28.00 TO STA 109+96.22
 RAMP D STA 104+92.97 TO STA 123+75.40



EXISTING TYPICAL CROSS SECTION ⑦
I-74 & FAS 331 (CH 10) INTERCHANGE RAMPS

⑥ RAMP A STA. 105+15.23 TO STA 109+15.23



MODEL: typical_sht-5 [Sheet]
 FILE NAME: c:\p\work\70h25\illinois.gov\10958986\0570H25_SHT_TYPICAL.dgn

USER NAME = Tianyi.Sun	DESIGNED -	REVISED -
	DRAWN -	REVISED -
PLOT SCALE = 0.16666833 / in.	CHECKED -	REVISED -
PLOT DATE = 3/14/2024	DATE -	REVISED -

STATE OF ILLINOIS
DEPARTMENT OF TRANSPORTATION

EXISTING TYPICAL SECTIONS

SCALE: SHEET 6 OF 6 SHEETS STA. TO STA.

F.A.I RTE.	SECTION	COUNTY	TOTAL SHEETS	SHEET NO.
74	(92-9,92-10)PP	VERMILION	23	10
CONTRACT NO. 70H25				
ILLINOIS FED. AID PROJECT				

SCHEDULE OF QUANTITIES

APPROX.	STATION	DIR	LANE	LENGTH	WIDTH	SQ. YD	TYPICAL	CLASS B PATCHES, TYPE II 15" (SQ. YD)	CLASS B PATCHES TYPE III 15" (SQ. YD)	CLASS B PATCHES TYPE IV 15" (SQ. YD)	DOWEL BARS 1 1/2" (EACH)	SAW CUTS (FT)	TIE BARS 3/4" (EACH)	WELDED WIRE REINFORCEMENT (SQ. YD)
								RURAL	RURAL	RURAL	RURAL	RURAL	RURAL	RURAL
							44201031	44201035	44201037	44201299	44213200	44213204	44200050	
LOCATION														
1149+05	EB	DL	8	12	10.7	1		10.7	0.0	0.0	20.0	52.0	0.0	0.0
1199+99	EB	DL	6	12	8.0	3		8.0	0.0	0.0	20.0	48.0	0.0	0.0
1203+93	EB	DL	6	12	8.0	3		8.0	0.0	0.0	20.0	48.0	0.0	0.0
1204+08	EB	DL	6	12	8.0	3		8.0	0.0	0.0	20.0	48.0	0.0	0.0
1220+10	EB	DL	20	12	26.7	3		0.0	0.0	26.7	30.0	76.0	7.0	26.7
1220+95	EB	DL	6	12	8.0	3		8.0	0.0	0.0	20.0	48.0	0.0	0.0
1221+10	EB	DL	6	12	8.0	3		8.0	0.0	0.0	20.0	48.0	0.0	0.0
1238+20	EB	DL	12	12	16.0	3		0.0	16.0	0.0	20.0	60.0	0.0	16.0
1249+97	EB	DL	18	12	24.0	2		0.0	24.0	0.0	30.0	72.0	0.0	24.0
1308+94	EB	PL	10	12	13.3	3		13.3	0.0	0.0	20.0	56.0	0.0	0.0
1339+00	EB	DL	8	12	10.7	3		10.7	0.0	0.0	20.0	52.0	0.0	0.0
1339+00	EB	PL	8	12	10.7	3		10.7	0.0	0.0	20.0	52.0	0.0	0.0
1341+96	EB	DL	8	12	10.7	3		10.7	0.0	0.0	20.0	52.0	0.0	0.0
1370+99	EB	DL	8	12	10.7	3		10.7	0.0	0.0	20.0	52.0	0.0	0.0
1439+99	EB	DL	6	12	8.0	2		8.0	0.0	0.0	20.0	48.0	0.0	0.0
1463+70	EB	DL	50	12	66.7	2		0.0	0.0	66.7	50.0	136.0	17.0	66.7
1259+00	WB	DL	10	12	13.3	2		13.3	0.0	0.0	20.0	56.0	0.0	0.0
1410+00	WB	DL	14	12	18.7	3		0.0	18.7	0.0	20.0	64.0	0.0	18.7
TOTAL					280.0			128.0	58.7	93.3	410.0	1068.0	24.0	152.0

MODEL: Schedule (Sheet)
 FILE NAME: c:\p\work\project\illinois.gov\44201031\SHT_SCHEDULE.E.dgn

USER NAME = Tianyi.Sun	DESIGNED -	REVISED -
	DRAWN -	REVISED -
	CHECKED -	REVISED -
PLOT DATE = 3/14/2024	DATE -	REVISED -

**STATE OF ILLINOIS
DEPARTMENT OF TRANSPORTATION**

SCHEDULE OF QUANTITIES

SCALE: SHEET 1 OF 2 SHEETS STA. TO STA.

F.A.I RTE.	SECTION	COUNTY	TOTAL SHEETS	SHEET NO.
74	(92-9,92-10)PP	VERMILION	23	11
CONTRACT NO. 70H25				
ILLINOIS FED. AID PROJECT				

SCHEDULE OF QUANTITIES

APPROX.	STATION	DIR	LANE	LENGTH	WIDTH	SQ. YD	TYPICAL	CLASS B PATCHES TYPE III 16" (SQ.YD)	DOWEL BARS 1 1/2" (EACH)	SAW CUTS (FT)	TIE BARS 3/4" (EACH)	WELDED WIRE REINFORCEMENT (SQ.YD)
								RURAL	RURAL	RURAL	RURAL	RURAL
								44201047	44201299	44213200	44213204	44200050
LOCATION												
	1627+50	WB	DL	14	13	20.2	5	20.2	22.0	67.0	0.0	20.2
	1627+50	WB	PL	14	12	18.7	5	18.7	20.0	64.0	0.0	18.7
	TOTAL					38.9		38.9	42.0	131.0	0.0	38.9

APPROX.	STATION	DIR	LENGTH	WIDTH	SQ. YD	TYPICAL	CLASS B PATCHES TYPE IV 12" (SQ. YD)	DOWEL BARS 1 1/2" (EACH)	SAW CUTS (FT)	TIE BARS 3/4" (EACH)	WELDED WIRE REINFORCEMENT (SQ. YD)
							RURAL	RURAL	RURAL	RURAL	RURAL
							44201000	44201299	44213200	44213204	44200050
LOCATION											
	RAMP A	EB OFF RAMP	105	14	174.9	6 & 7	174.9	108.0	254.3	0.0	174.9
	RAMP B	EB ON RAMP	220		611.4	6	611.4	488.0	586.0	91.0	611.4
	RAMP C	WB ON RAMP	304		763.8	6	763.8	472.0	770.5	95.0	763.8
	RAMP D	WE OFF RAMP	524		1160.4	6	1160.4	652.0	1268.7	101.0	1160.4
	TOTAL				2710.5		2710.5	1720.0	2879.5	287.0	2710.5

MODEL: Schedule-1 (Sheet)
FILE NAME: c:\pwworking\illinois.gov\lanyl.sun@illinois.gov\d0958986\0570H25_SHT_SCHEDULE1.dgn

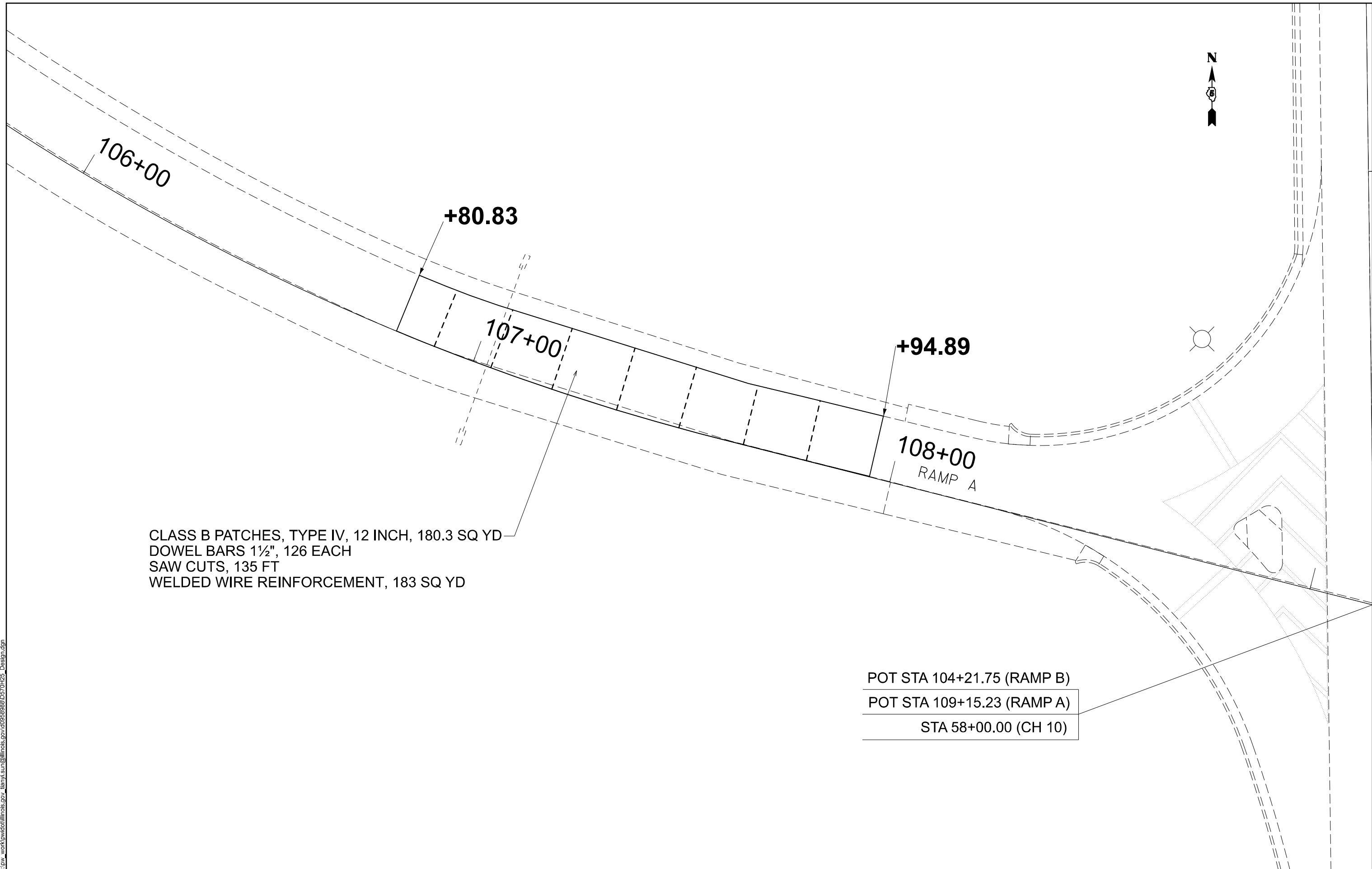
USER NAME = Tianyi.Sun	DESIGNED -	REVISED -
	DRAWN -	REVISED -
	CHECKED -	REVISED -
PLOT DATE = 3/14/2024	DATE -	REVISED -

**STATE OF ILLINOIS
DEPARTMENT OF TRANSPORTATION**

SCHEDULE OF QUANTITIES

SCALE: SHEET 2 OF 2 SHEETS STA. TO STA.

F.A.I RTE.	SECTION	COUNTY	TOTAL SHEETS	SHEET NO.
74	(92-9,92-10)PP	VERMILION	23	12
CONTRACT NO. 70H25				
ILLINOIS FED. AID PROJECT				



CLASS B PATCHES, TYPE IV, 12 INCH, 180.3 SQ YD
 DOWEL BARS 1½", 126 EACH
 SAW CUTS, 135 FT
 WELDED WIRE REINFORCEMENT, 183 SQ YD

POT STA 104+21.75 (RAMP B)
 POT STA 109+15.23 (RAMP A)
 STA 58+00.00 (CH 10)

MODEL: Ramp A (Sheet)
 FILE NAME: c:\p\work\vermilion\illinois.gov\0958888\0570H25_Design.dgn

USER NAME = Tianyi.Sun	DESIGNED -	REVISED -
	DRAWN -	REVISED -
	CHECKED -	REVISED -
PLOT DATE = 3/14/2024	DATE -	REVISED -

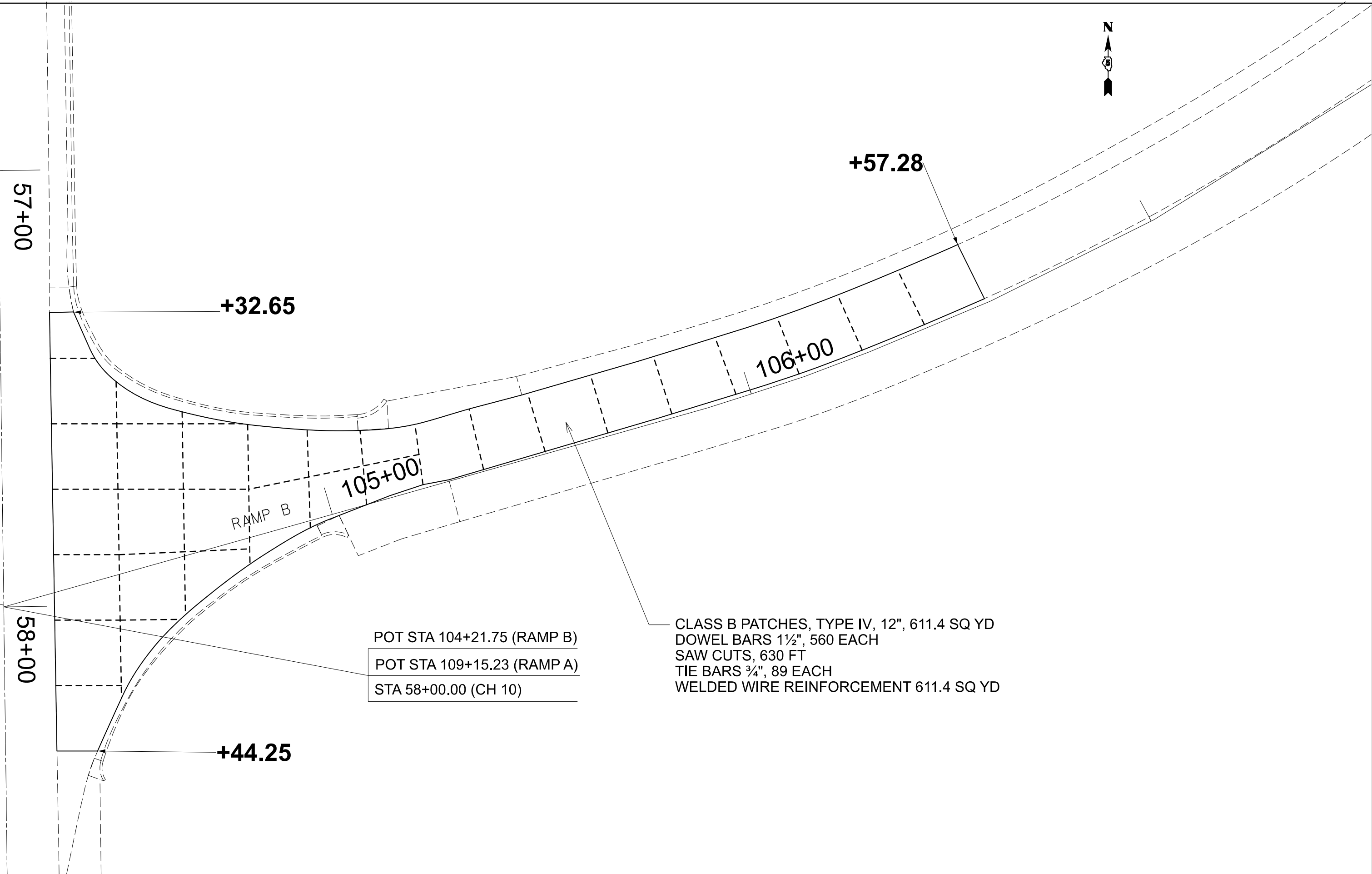
**STATE OF ILLINOIS
 DEPARTMENT OF TRANSPORTATION**

**RAMP A -- I-74 EB OFF RAMP
 OAKWOOD INTERCHANGE PATCH DETAILS**

SCALE: SHEET 1 OF 4 SHEETS STA. TO STA.

F.A.I RTE.	SECTION	COUNTY	TOTAL SHEETS	SHEET NO.
74	(92-9,92-10)PP	VERMILION	23	13
CONTRACT NO. 70H25				

ILLINOIS FED. AID PROJECT



MODEL: Ramp B (Sheet)
 FILE NAME: c:\p\work\pav\illinois.gov\lanyl.sun@illinois.gov\d0959888\0570H25_Design.dgn

USER NAME = Tlanyl.Sun	DESIGNED -	REVISED -
	DRAWN -	REVISED -
	CHECKED -	REVISED -
PLOT DATE = 3/14/2024	DATE -	REVISED -

STATE OF ILLINOIS
DEPARTMENT OF TRANSPORTATION

RAMP B -- I-74 EB ON RAMP
OAKWOOD INTERCHANGE PATCH DETAILS

SCALE: SHEET 2 OF 4 SHEETS STA. TO STA.

F.A.I. RTE.	SECTION	COUNTY	TOTAL SHEETS	SHEET NO.
74	(92-9,92-10)PP	VERMILION	23	14
CONTRACT NO. 70H25				
ILLINOIS FED. AID PROJECT				



+64.64

42+00.00

RAMP C

RT 10

CLASS B PATCHES, TYPE IV 12", 735.8 SQ YD
DOWEL BARS 1½", 630 EACH
SAW CUTS, 750 FT
TIE BARS ¾", 94 EACH
WELDED WIRE REINFORCEMENT, 735.8 SQ YD

108+00

+74.20

+71.89

POT STA 104+92.97 (RAMP D)
POT STA 109+96.22 (RAMP C)
STA 42+00.00 (CH 10)

107+00

MODEL: Ramp C (Sheet)
FILE NAME: c:\p\work\pav\illinois.gov\lanyl.sun@illinois.gov\d0959888\0570H25_Design.dgn

USER NAME = Tianyi.Sun	DESIGNED -	REVISED -
	DRAWN -	REVISED -
	CHECKED -	REVISED -
PLOT DATE = 3/14/2024	DATE -	REVISED -

**STATE OF ILLINOIS
DEPARTMENT OF TRANSPORTATION**

**RAMP C – I-74 WB ON RAMP
OAKWOOD INTERCHANGE PATCH DETAILS**

SCALE: SHEET 3 OF 4 SHEETS STA. TO STA.

F.A.I. RTE.	SECTION	COUNTY	TOTAL SHEETS	SHEET NO.
74	(92-9,92-10)PP	VERMILION	23	15
CONTRACT NO. 70H25				
ILLINOIS FED. AID PROJECT				



POT STA 104+92.97 (RAMP D)
 POT STA 109+96.22 (RAMP C)
 STA 42+00.00 (CH 10)

+49.35

RELOCATION OF SIGNS
 INCIDENTAL TO CONCRETE MEDIAN WORK

RAMP D

111+00

112+00

113+00

114+00

115+00

+32.08

+52.27

CLASS B PATCHES, TYPE IV 12", 1150.7 SQ YD
 DOWEL BARS 1½", 868 EACH
 SAW CUTS, 975 FT
 TIE BARS ¾", 100 EACH
 WELDED WIRE REINFORCEMENT, 1150.7 SQ YD

MODEL: Ramp D (Sheet)
 FILE NAME: c:\p\work\pav\illinois.gov\il\ilinois.gov\ilanyl.sun@illinois.gov\06568888\0570H25_Design.dgn

USER NAME = Tianyi.Sun	DESIGNED -	REVISED -
	DRAWN -	REVISED -
	CHECKED -	REVISED -
PLOT DATE = 3/14/2024	DATE -	REVISED -

STATE OF ILLINOIS
 DEPARTMENT OF TRANSPORTATION

RAMP D -- I-74 WB OFF RAMP
 OAKWOOD INTERCHANGE PATCH DETAILS

SCALE: SHEET 4 OF 4 SHEETS STA. TO STA.

F.A.I. RTE.	SECTION	COUNTY	TOTAL SHEETS	SHEET NO.
74	(92-9,92-10)PP	VERMILION	23	16
CONTRACT NO. 70H25				
ILLINOIS FED. AID PROJECT				

70H25 EB OAKWOOD RD. EXIT RAMP CLOSURE DETOUR PLAN



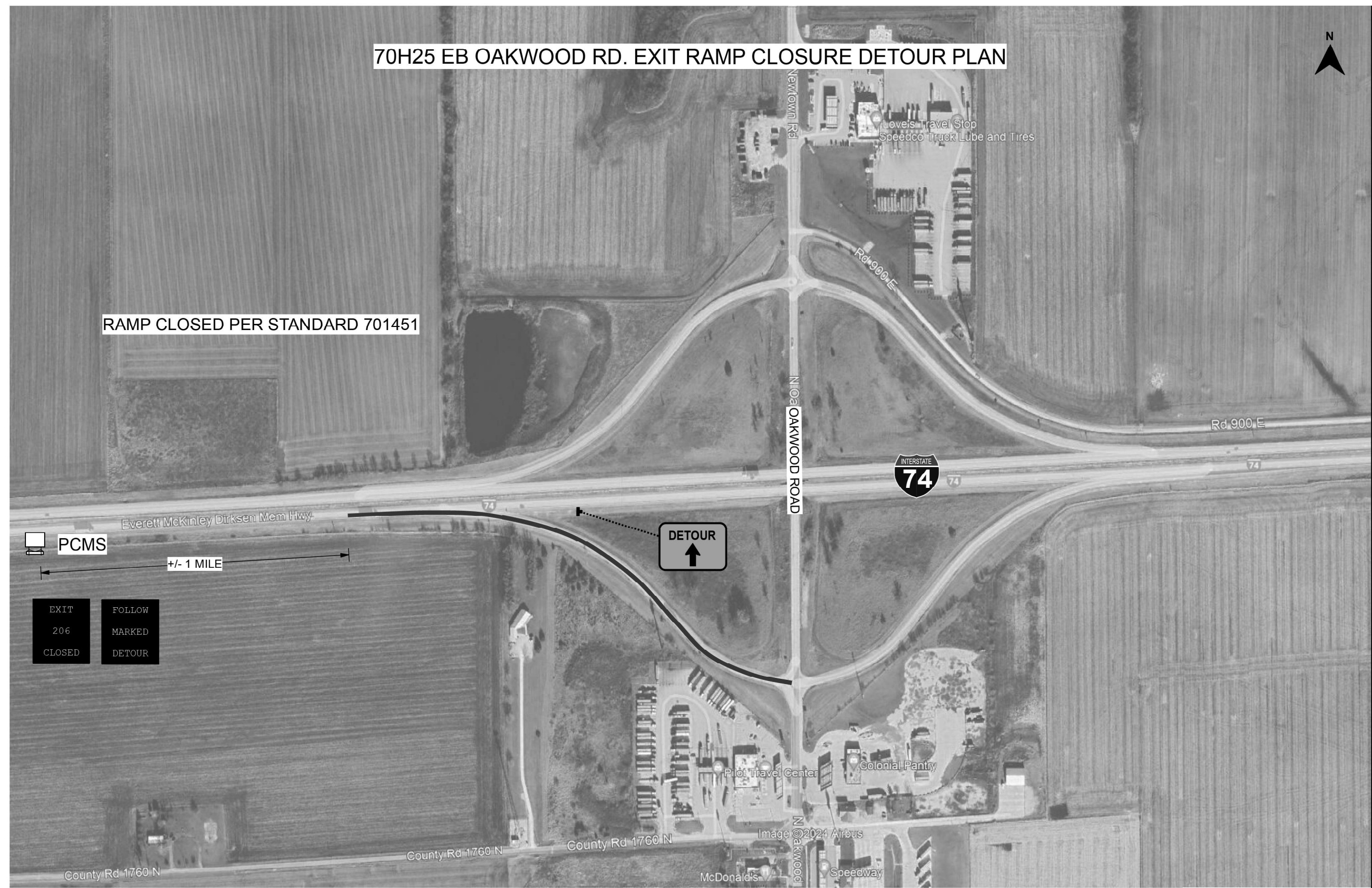
RAMP CLOSED PER STANDARD 701451

PCMS

+/- 1 MILE

EXIT	FOLLOW
206	MARKED
CLOSED	DETOUR

DETOUR
↑



MODEL: EB OAKWOOD RD EXIT RAMP [Sheet]
FILE NAME: c:\p\work\70h25\illinois.gov\70h25_SHT_DETOUR.dgn

USER NAME = Tianyi.Sun	DESIGNED -	REVISED -
	DRAWN -	REVISED -
	CHECKED -	REVISED -
PLOT DATE = 3/18/2024	DATE -	REVISED -

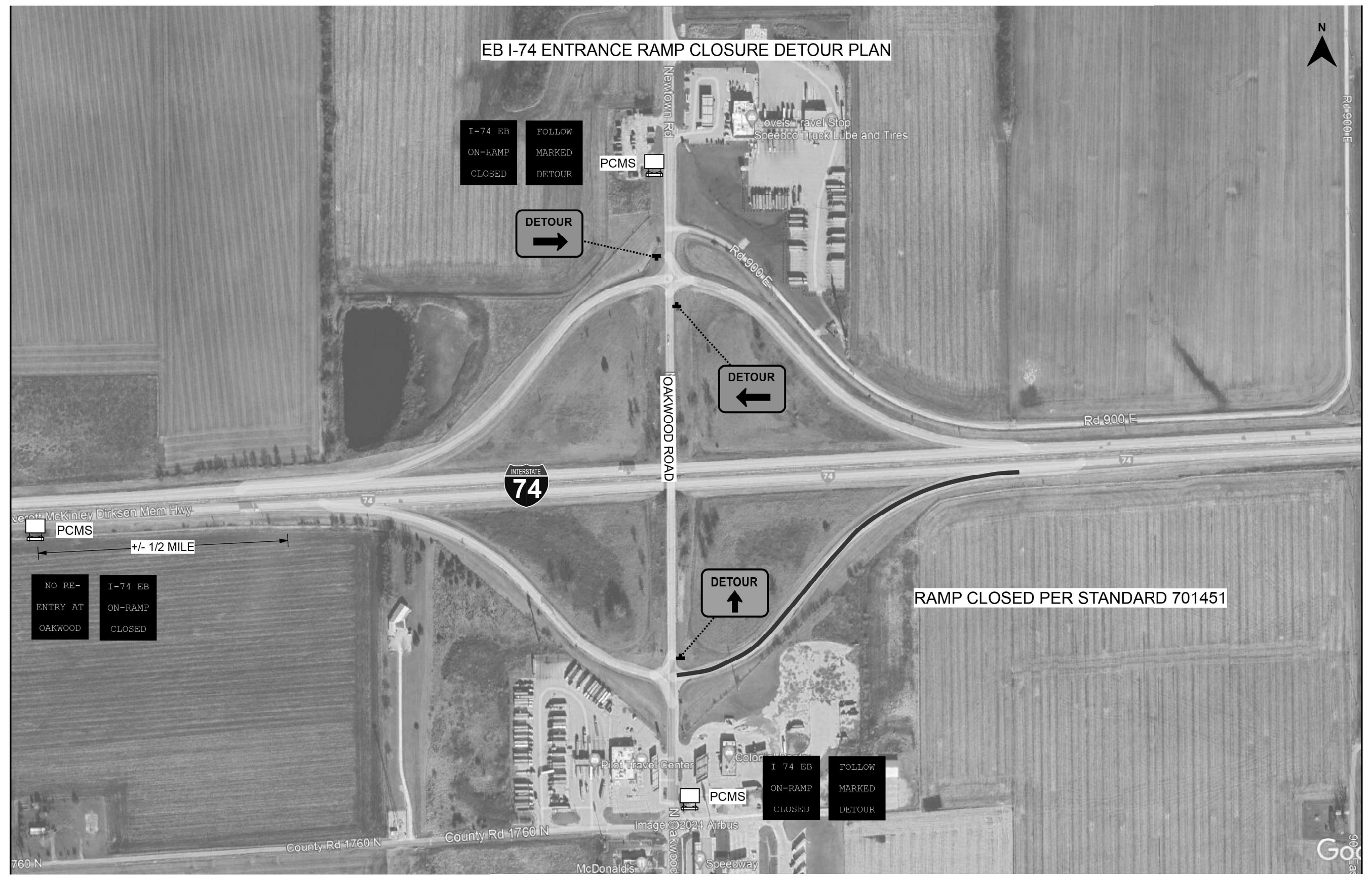
STATE OF ILLINOIS
DEPARTMENT OF TRANSPORTATION

EB OAKWOOD RD. EXIT RAMP
TRAFFIC CONTROL PLAN

SCALE: SHEET 1 OF 6 SHEETS STA. TO STA.

F.A.I RTE.	SECTION	COUNTY	TOTAL SHEETS	SHEET NO.
74	(92-9,92-10)PP	VERMILION	23	17
CONTRACT NO. 70H25				
ILLINOIS FED. AID PROJECT				

EB I-74 ENTRANCE RAMP CLOSURE DETOUR PLAN



MODEL: EB I-74 ENTRANCE RAMP (Sheet)
 FILE NAME: c:\p\work\70h25\illinois.gov\lanyl.sun@illinois.gov\0958986\0570H25_SHT_DETOUR.dgn

USER NAME = Tianyi.Sun	DESIGNED -	REVISED -
	DRAWN -	REVISED -
	CHECKED -	REVISED -
PLOT DATE = 3/18/2024	DATE -	REVISED -

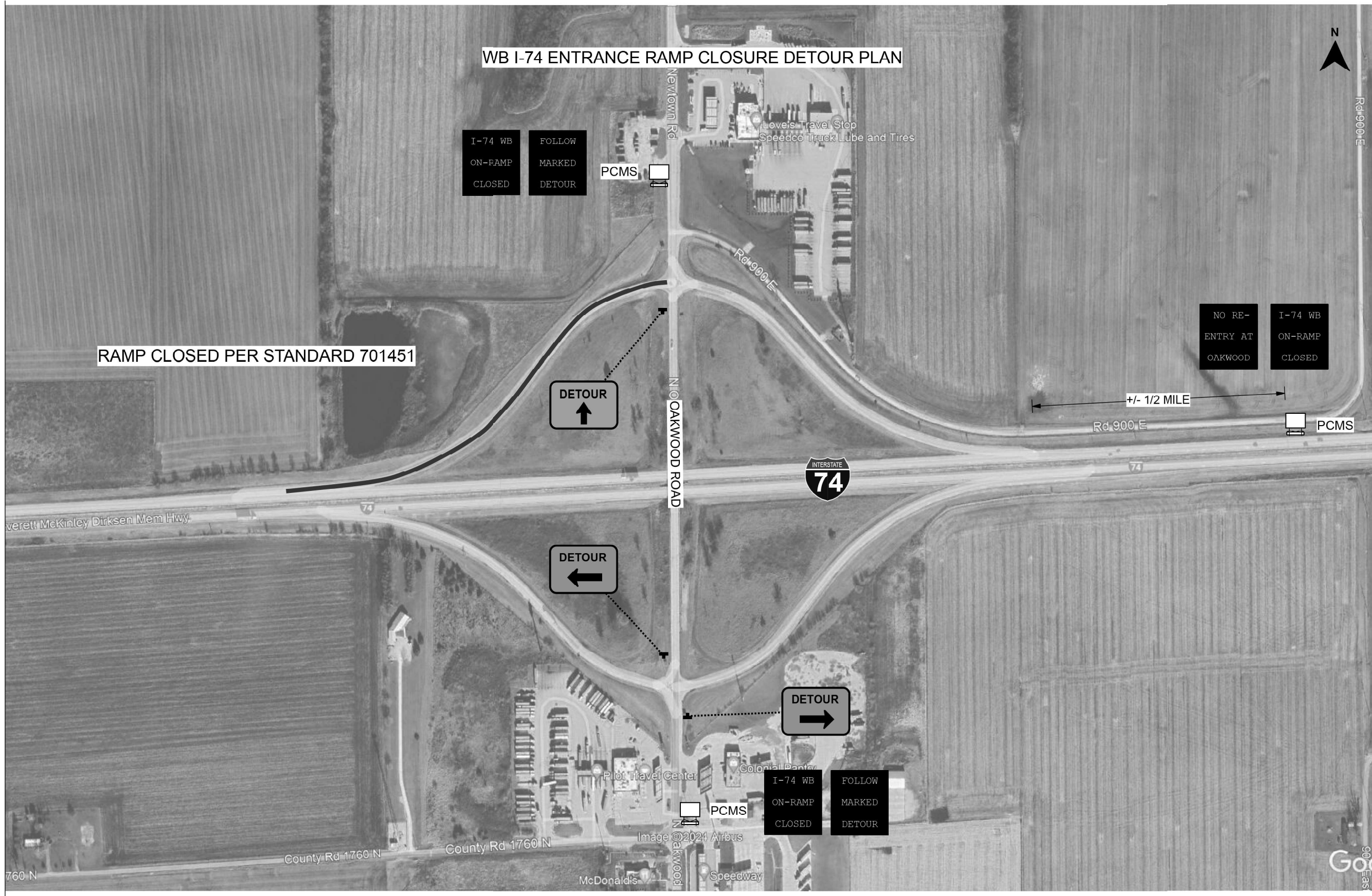
**STATE OF ILLINOIS
 DEPARTMENT OF TRANSPORTATION**

**EB I-74 ENTRANCE RAMP
 TRAFFIC CONTROL PLAN**

SCALE: SHEET 2 OF 6 SHEETS STA. TO STA.

F.A.I RTE.	SECTION	COUNTY	TOTAL SHEETS	SHEET NO.
74	(92-9,92-10)PP	VERMILION	23	18
CONTRACT NO. 70H25				
ILLINOIS FED. AID PROJECT				

WB I-74 ENTRANCE RAMP CLOSURE DETOUR PLAN



I-74 WB
ON-RAMP
CLOSED

FOLLOW
MARKED
DETOUR

NO RE-
ENTRY AT
OAKWOOD

I-74 WB
ON-RAMP
CLOSED

I-74 WB
ON-RAMP
CLOSED

FOLLOW
MARKED
DETOUR

MODEL: WB I-74 ENTRANCE RAMP (Sheet)
FILE NAME: c:\p\work\74\illinois.gov\0958866\0570H25_SHT_DETOUR.dgn

USER NAME = Tianyi.Sun	DESIGNED -	REVISED -
	DRAWN -	REVISED -
	CHECKED -	REVISED -
PLOT DATE = 3/18/2024	DATE -	REVISED -

**STATE OF ILLINOIS
DEPARTMENT OF TRANSPORTATION**

**WB I-74 ENTRANCE RAMP
TRAFFIC CONTROL PLAN**

SCALE: SHEET 3 OF 6 SHEETS STA. TO STA.

F.A.I RTE.	SECTION	COUNTY	TOTAL SHEETS	SHEET NO.
74	(92-9,92-10)PP	VERMILION	23	19
CONTRACT NO. 70H25				
ILLINOIS FED. AID PROJECT				

70H25 WB OAKWOOD RD. EXIT RAMP CLOSURE DETOUR PLAN



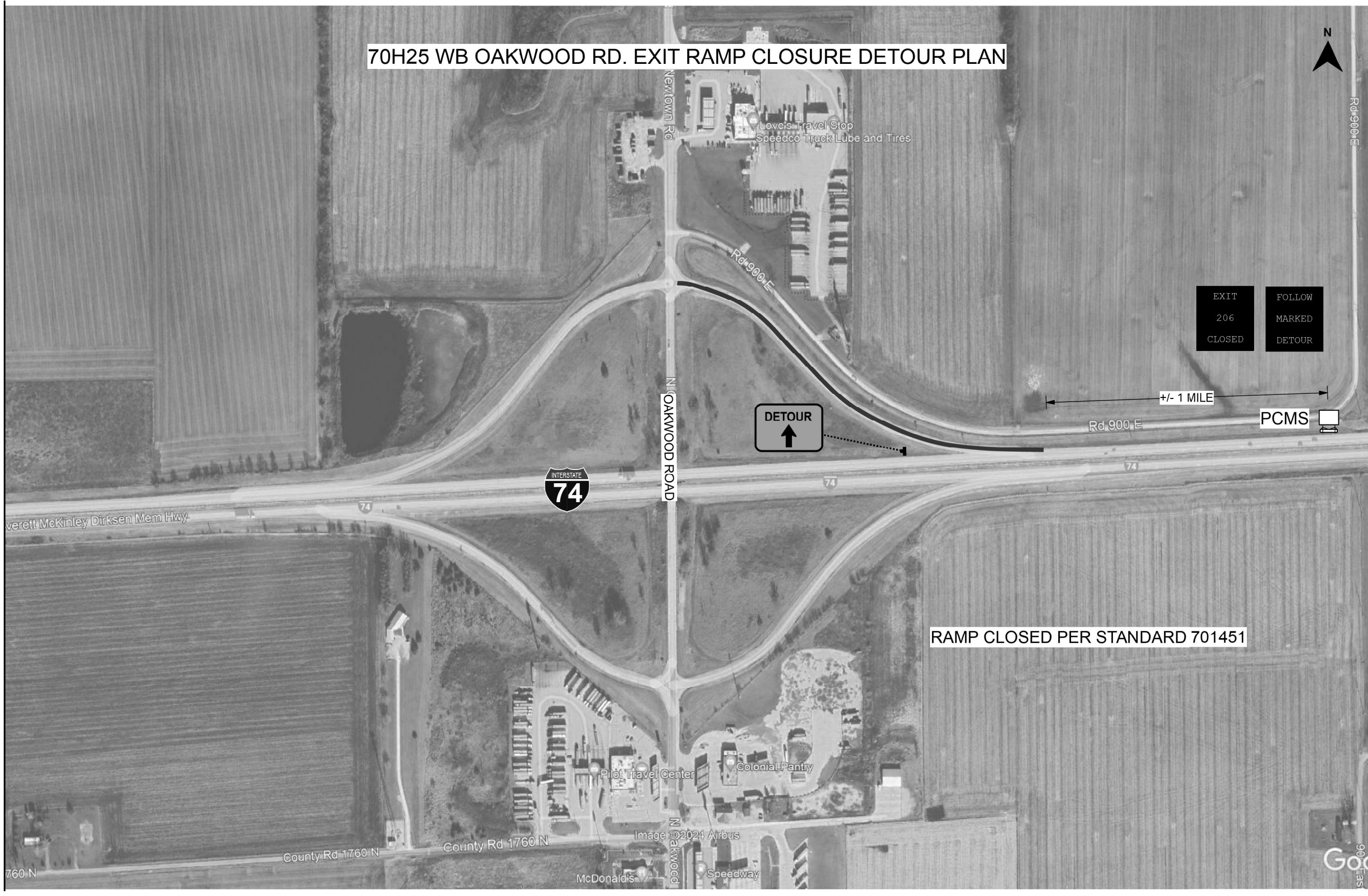
EXIT 206 CLOSED	FOLLOW MARKED DETOUR
-----------------------	----------------------------

DETOUR
↑

+/- 1 MILE

PCMS

RAMP CLOSED PER STANDARD 701451



MODEL: I-74 AT OAKWOOD RD EXIT RAMP (Sheet)
FILE NAME: c:\p\work\70h25\illinois.gov\70h25_SHT_DETOUR.dgn

USER NAME = Tianyi.Sun	DESIGNED -	REVISED -
	DRAWN -	REVISED -
	CHECKED -	REVISED -
PLOT DATE = 3/18/2024	DATE -	REVISED -

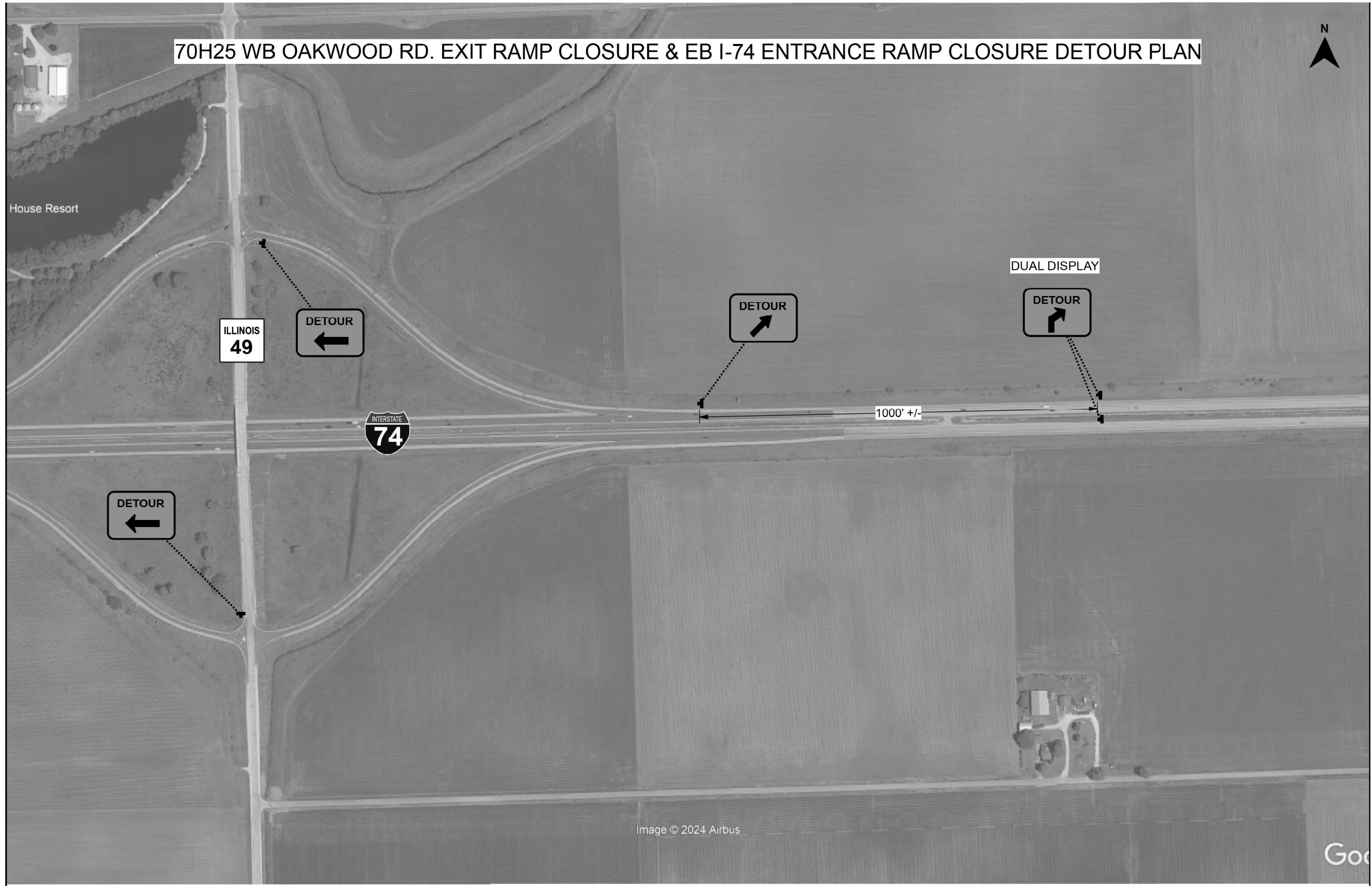
**STATE OF ILLINOIS
DEPARTMENT OF TRANSPORTATION**

**I-74 AT OAKWOOD RD. EXIT RAMP
TRAFFIC CONTROL PLAN**

SCALE: SHEET 4 OF 6 SHEETS STA. TO STA.

F.A.I RTE.	SECTION	COUNTY	TOTAL SHEETS	SHEET NO.
74	(92-9,92-10)JP	VERMILION	23	20
CONTRACT NO. 70H25				
ILLINOIS FED. AID PROJECT				

70H25 WB OAKWOOD RD. EXIT RAMP CLOSURE & EB I-74 ENTRANCE RAMP CLOSURE DETOUR PLAN



MODEL: WB OAKWOOD ROAD EXIT RAMP (Sheet)
FILE NAME: c:\p\work\70h25\illinois.gov\70h25_SHT_DETOUR.dgn

USER NAME = Tianyi.Sun	DESIGNED -	REVISED -
	DRAWN -	REVISED -
	CHECKED -	REVISED -
PLOT DATE = 3/18/2024	DATE -	REVISED -

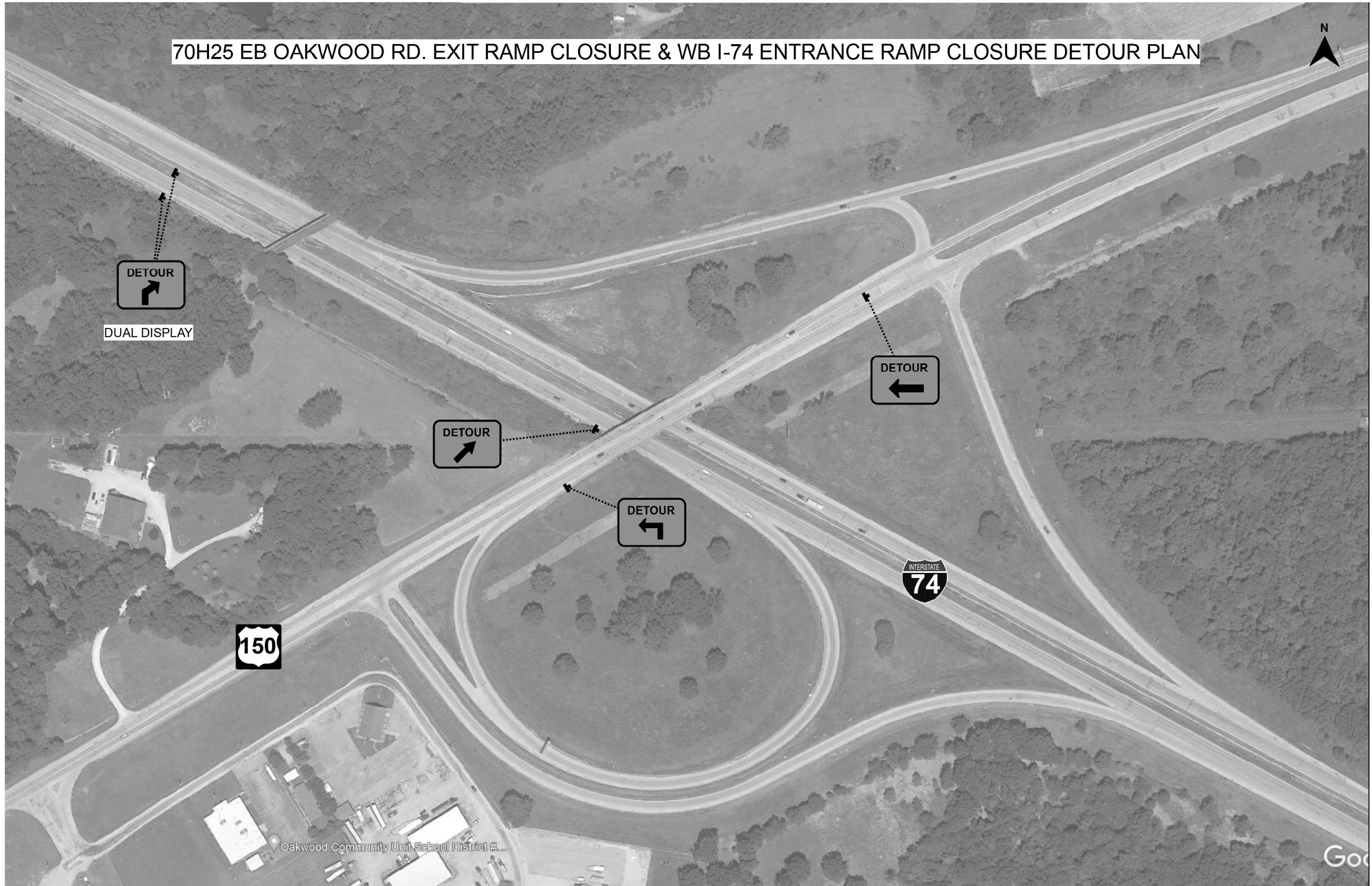
**STATE OF ILLINOIS
DEPARTMENT OF TRANSPORTATION**

**WB OAKWOOD ROAD EXIT RAMP
TRAFFIC CONTROL PLAN**

SCALE: SHEET 5 OF 6 SHEETS STA. TO STA.

F.A.I RTE.	SECTION	COUNTY	TOTAL SHEETS	SHEET NO.
74	(92-9,92-10)PP	VERMILION	23	21
CONTRACT NO. 70H25				
ILLINOIS		FED. AID PROJECT		

70H25 EB OAKWOOD RD. EXIT RAMP CLOSURE & WB I-74 ENTRANCE RAMP CLOSURE DETOUR PLAN



MODEL: EB OAKWOOD RD. WB I-74 [Sheet]
 FILE NAME: c:\p\work\70h25\illinois.gov\0958986\0570H25_SHT_DETOUR.dgn

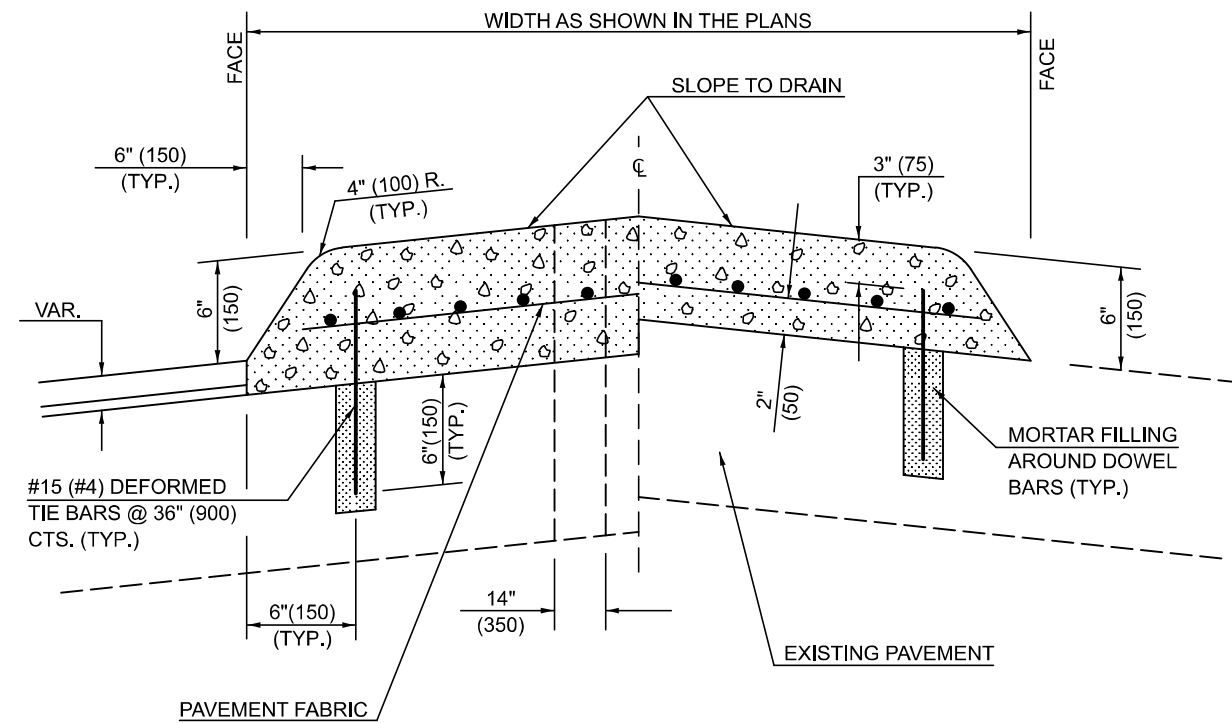
USER NAME = Tlanyl.Sun	DESIGNED -	REVISED -
	DRAWN -	REVISED -
	CHECKED -	REVISED -
PLOT DATE = 3/18/2024	DATE -	REVISED -

STATE OF ILLINOIS
 DEPARTMENT OF TRANSPORTATION

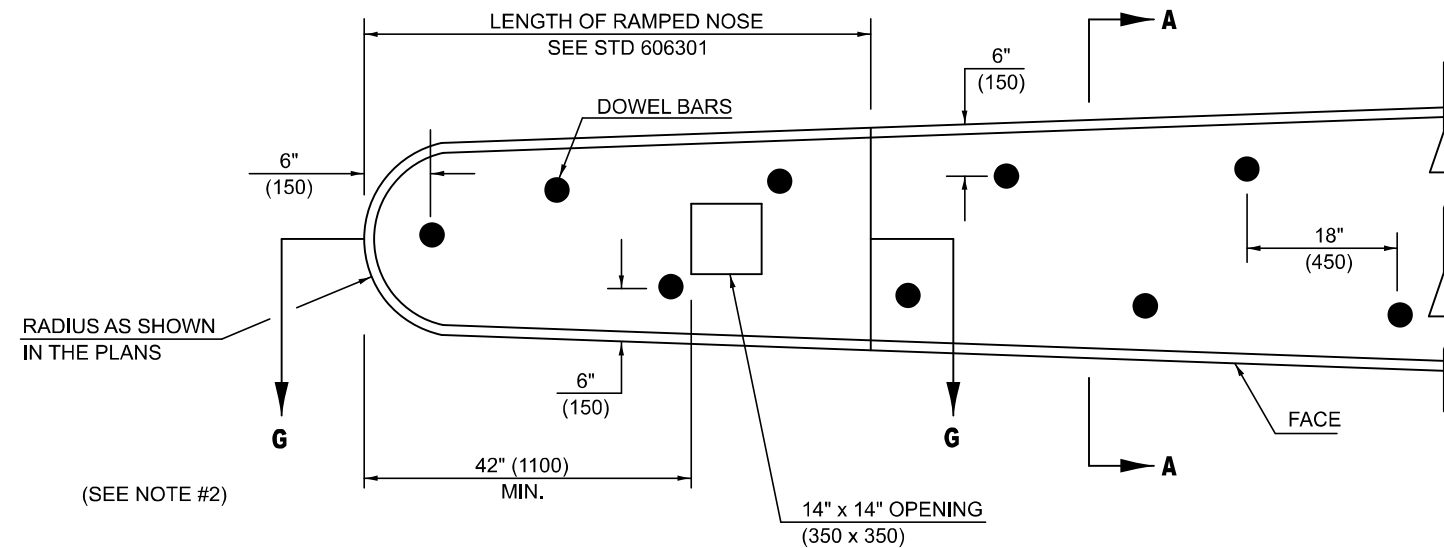
EB OAKWOOD RD EXIT RAMP & WB I-74 ENTRANCE RAMP
 TRAFFIC CONTROL PLAN

SCALE: SHEET 6 OF 6 SHEETS STA. TO STA.

F.A.I RTE.	SECTION	COUNTY	TOTAL SHEETS	SHEET NO.
74	(92-9,92-10)PP	VERMILION	23	22
CONTRACT NO. 70H25				
ILLINOIS FED. AID PROJECT				



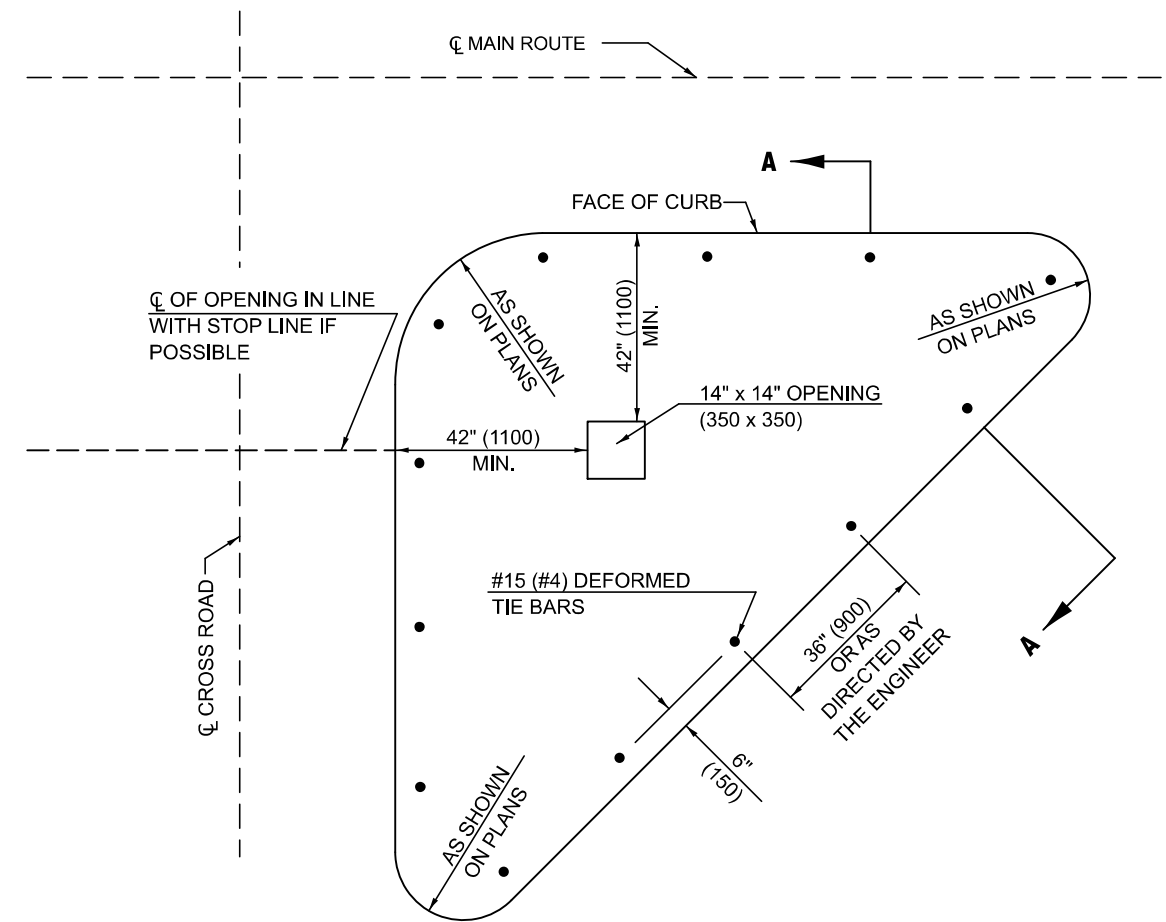
SECTION A-A



PLAN OF MEDIAN

GENERAL NOTES

1. THE GENERAL NOTES FOR STANDARD 606301 SHALL APPLY.
2. DOWEL BARS @ 36" (900) CTS. OR AS DIRECTED BY THE ENGINEER.
3. THIS WORK WILL BE PAID FOR AT THE CONTRACT UNIT PRICE PER SQ FOOT (m²) FOR CONCRETE MEDIAN, TYPE SM (DOWELLED), INCLUDING THE COST OF FURNISHING AND INSTALLING THE DOWEL BARS, MORTAR FILLING, PAVEMENT FABRIC AND THE REMOVAL AND DISPOSAL OF THE EXISTING PAVEMENT FOR THE 14" x 14" (350 x 350) OPENING, IF REQUIRED, AND NO ADDITIONAL COMPENSATION WILL BE ALLOWED.
4. ISLAND AND MEDIAN NOSES SHALL BE RAMPED IN ACCORDANCE WITH STANDARD 606301.



PLAN OF CORNER ISLAND

Note: All dimensions are in INCHES (millimeters) unless otherwise shown.

MODEL: 60622354
FILE NAME: c:\pwwork\work\illinois.gov\lanyl.sun@illinois.gov\d0958986\0570H25-SH+Detail_60622354.dgn

USER NAME = Tlanyl.Sun	DESIGNED -	REVISED - 11/06
	DRAWN -	REVISED - 08/09 KJT
PLOT SCALE = 0.16666833' / in.	CHECKED -	REVISED - 07/14 JWS
PLOT DATE = 3/13/2024	DATE -	REVISED - 3/6/17 SWN

**STATE OF ILLINOIS
DEPARTMENT OF TRANSPORTATION**

CONCRETE MEDIAN, TYPE SM (DOWELLED)

SCALE: SHEET 1 OF 1 SHEETS STA. TO STA.

DISTRICT 5 DETAIL NO. 60622354				
F.A.I. RTE.	SECTION	COUNTY	TOTAL SHEETS	SHEET NO.
74	(92-9,92-10)PP	VERMILION	23	23
CONTRACT NO. 70H25				
ILLINOIS FED. AID PROJECT				