

STATE OF ILLINOIS  
DEPARTMENT OF TRANSPORTATION

F.A. RTE.	SECTION	COUNTY	TOTAL SHEETS	SHEET NO.
VAR	D6 ITS 2024-1	CHRISTIAN	40	1
		ILLINOIS	CONTRACT NO. 72734	

FOR INDEX OF SHEETS, SEE SHEET NO. 2

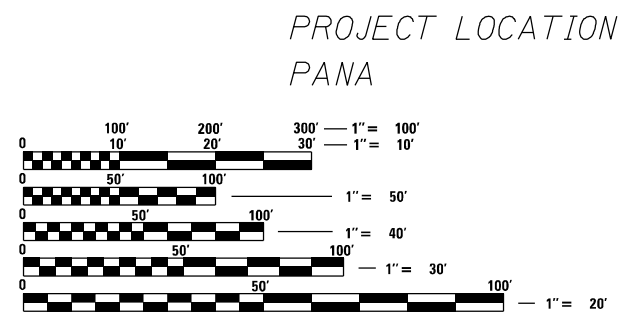
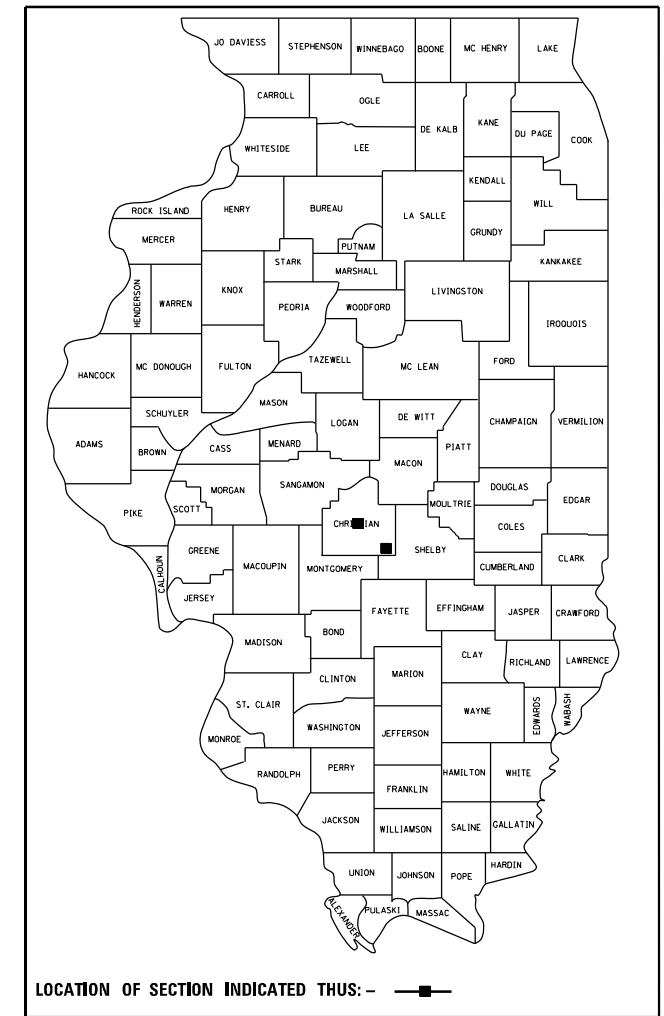
# PROPOSED IMPROVEMENTS

VARIOUS (VARIOUS) SECTION D6 ITS 2024-1

CHRISTIAN

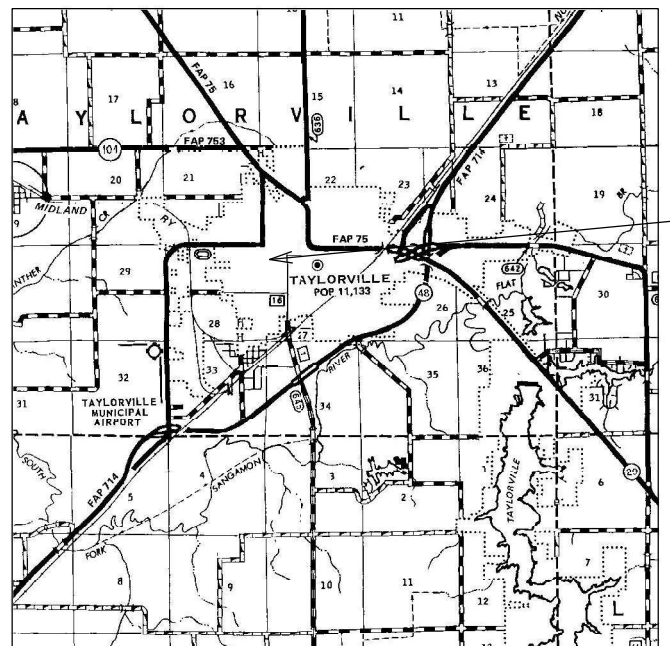
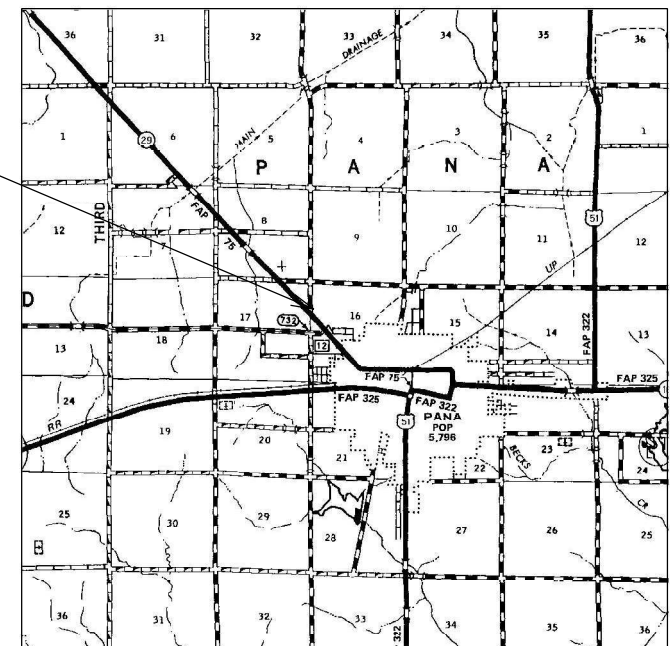
C-96-042-24

D-96-026-24



FULL SIZE PLANS HAVE BEEN PREPARED USING STANDARD ENGINEERING SCALES, REDUCED SIZED PLANS WILL NOT CONFORM TO STANDARD SCALES. IN MAKING MEASUREMENTS ON REDUCED PLANS, THE ABOVE SCALES MAY BE USED.

J.U.L.I.E.  
JOINT UTILITY LOCATION INFORMATION FOR EXCAVATION  
1-800-892-0123  
OR 811



PROJECT LOCATION TAYLORVILLE



PROJECT ENGINEER : MIKE HAMBY - (217)524-7765  
PROJECT MANAGER : TIM SHARP - (217)524-9160

CONTRACT NO. 72734

STATE OF ILLINOIS  
DEPARTMENT OF TRANSPORTATION

SUBMITTED March 27, 2024

*[Signature]*  
REGION FOUR ENGINEER

May 10, 2024 *[Signature]*  
ENGINEER OF DESIGN AND ENVIRONMENT

May 10, 2024 *[Signature]*  
DIRECTOR OF HIGHWAYS PROJECT IMPLEMENTATION

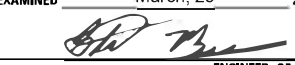


PRINTED BY THE AUTHORITY OF THE STATE OF ILLINOIS

**INDEX OF SHEETS**

- 1 COVER SHEET
- 2 INDEX OF SHEETS, GENERAL NOTES, SIGNATURES, STANDARDS
- 3 SUMMARY OF QUANTITIES
- 4 LEGEND AND NOTES
- 5-6 LOCATION PLAN
- 7-30 PLANS
- 31-40 VIDEO VEHICLE DETECTION PLAN

**HIGHWAY STANDARDS**

- 701001-02 OFF-RD OPERATIONS, 2L, 2W, MORE THAN 15' (4.5 m) AWAY
- 701006-05 OFF-RD OPERATIONS, 2L, 2W, 15' (4.5 m) TO 24" (600mm) FROM PAVEMENT EDGE
- 701101-05 OFF-RD OPERATIONS, MULTILANE, 15' (4.5 m) TO 24" (600mm) FROM EDGE OF PAVEMENT
- 701106-02 OFF-RD OPERATIONS, MULTILANE, MORE THAN 15' (4.5m) AWAY
- 701201-05 LANE CLOSURE, 2L, 2W, DAY ONLY, FOR SPEEDS > 45 MPH
- 701502-09 URBAN LANE CLOSURE, 2L, 2W, WITH BIDIRECTIONAL LEFT TURN LANE
- 701601-09 URBAN LANE CLOSURE, MULTILANE, 1W OR 2W WITH NONTRANSVERSABLE MEDIAN
- 701602-10 URBAN LANE CLOSURE, MULTILANE, 2W WITH BIDIRECTIONAL LEFT TURN LANE
- 701701-10 URBAN LANE CLOSURE, MULTILANE INTERSECTION
- 701901-09 TRAFFIC CONTROL DEVICES
- 000001-08 STANDARD SYMBOLS, ABBREVIATIONS AND PATTERNS
- 001006 DECIMAL OF AN INCH AND OF A FOOT
- 420001-10 PAVEMENT JOINTS
- 814001-03 HANDHOLES
- 857001-01 STANDARD PHASE DESIGNATION DIAGRAMS AND PHASE SEQUENCES

<b>STATE OF ILLINOIS DEPARTMENT OF TRANSPORTATION DIVISION OF HIGHWAYS DISTRICT 6</b>	
EXAMINED _____	March, 29 _____ 20 24
 ENGINEER OF OPERATIONS	
EXAMINED _____	March, 29 _____ 20 24
 ENGINEER OF PROJECT IMPLEMENTATION	
EXAMINED _____	March, 29 _____ 20 24
 ENGINEER OF PROGRAM DEVELOPMENT	

REV. - MS

FILE NAME =	USER NAME = Timothy.Sharp	DESIGNED - DMS 2/2017	REVISED -	<b>STATE OF ILLINOIS DEPARTMENT OF TRANSPORTATION</b>	<b>INDEX OF SHEETS, GENERAL NOTES, SIGNATURES</b>	F.A. RTE.	SECTION	COUNTY	TOTAL SHEETS	SHEET NO.	
S:\CONTRMINT_CAD\72734 - VARIOUS (VARIOUS) - TAYLORVILLE - PANA - ITS - CHRISTIAN C	DRAWN-2024\pl.en	03/27/2024	REVIS			VAR	ITS D6 2024-1	CHRISTIAN	40	2	
Default	PLOT SCALE = 40.0000' / in.	CHECKED -	REVISED -			SCALE: SHEET 1 OF 1 SHEETS STA. TO STA.		CONTRACT NO. 72734			
	PLOT DATE = 3/27/2024	DATE -	REVISED -			ILLINOIS FED. AID PROJECT					



6-00338-9984  
100% STATE  
CHRISTIAN  
ROADWAY  
0043  
URBAN

CODE NO.	ITEM	UNIT	TOTAL QUANTITY	
42400100	PORTLAND CEMENT CONCRETE SIDEWALK 4 INCH	SQ FT	213	213
44000600	SIDEWALK REMOVAL	SQ FT	213	213
67100100	MOBILIZATION	L SUM	1	1
70100450	TRAFFIC CONTROL AND PROTECTION, STANDARD 701201	L SUM	1	1
70102622	TRAFFIC CONTROL AND PROTECTION, STANDARD 701502	L SUM	1	1
70102630	TRAFFIC CONTROL AND PROTECTION, STANDARD 701601	L SUM	1	1
70102632	TRAFFIC CONTROL AND PROTECTION, STANDARD 701602	L SUM	1	1
70102635	TRAFFIC CONTROL AND PROTECTION, STANDARD 701701	L SUM 1	1	1
81028340	UNDERGROUND CONDUIT, PVC, 1 1/2" DIA.	FOOT	9999	9999
85706000	INTERSECTION MONITOR UNIT	EACH	17	17
87900200	DRILL EXISTING HANDHOLE	EACH	15	15
89502210	MODIFY EXISTING CONTROLLER CABINET	EACH	17	17
X8891202	WIDE AREA VIDEO VEHICLE DETECTION SYSTEM COMPLETE	EACH	7	7

6-00338-9984  
100% STATE  
CHRISTIAN  
ROADWAY  
0043  
URBAN

CODE NO.	ITEM	UNIT	TOTAL QUANTITY	
X8710103	ETHERNET SWITCH	EACH	18	18
X0326812	CAT 5 ETHERNET CABLE	FOOT	530	530
X0326905	CLOSED CIRCUIT TELEVISION DOME CAMERA, IP BASED	EACH	4	4
X1400076	COBALT CONTROLLER	EACH	17	17
X1400155	REMOVAL OF FIBER OPTIC CABLE	FOOT	7946	7946
X8140105	HANDHOLE (SPECIAL)	EACH	18	18
X8710029	FIBER OPTIC CABLE 24 FIBERS, SINGLE MODE	FOOT	20425	20425
X8730401	ELECTRIC CABLE IN CONDUIT, COMMUNICATION	FOOT	3345	3345
Z0010688	CAMERA MOUNTING ASSEMBLY	EACH	16	16
X8891001	VIDEO VEHICLE DETECTION SYSTEM	EACH	2	2
X8130125	REMOVE EXISTING JUNCTION BOX	EACH	3	3

REV. - MS

FILE NAME = S:\CONTRACTS\CAD\72734 - VARIOUS (VARIOUS) - TAYLORVILLE - PANA - ITS - CHRISTIAN CD	USER NAME = Timothy.Sharp	DESIGNED -	REVISED -	<b>STATE OF ILLINOIS DEPARTMENT OF TRANSPORTATION</b>	<b>SUMMARY OF QUANTITIES</b>	F.A. RTE.	SECTION	COUNTY	TOTAL SHEETS	SHEET NO.	
		CHECKED -	REVISED -			VAR	D6 ITS 2024-1	CHRISTIAN	40	3	
		DATE -	REVISED -			CONTRACT NO. 72734					
Default	PLOT DATE = 3/26/2024					ILLINOIS FED. AID PROJECT					

**GENERAL NOTES**

**LEGEND**

- R REMOVE
- RR REMOVE AND REPLACE
- ◻ EXISTING HANDHOLE
- ◻◻ EXISTING DOUBLE HANDHOLE
- ⊠ EXISTING CONTROLLER
- ◻◻ PROPOSED HANDHOLE
- 📷 PROPOSED CCTV CAMERA
- ◻◻ EXISTING GULF BOX JUNCTION
- — — EXISTING CONDUIT
- - - PROPOSED CONDUIT
- 📷 VIDEO VEHICLE DETECTION SYSTEM

- 1 CCTV ARE LOCATION SENSITIVE. PROPOSED EQUIPMENT LOCATIONS ARE APPROXIMATE. TO ENSURE THE OPTIMUM FIELD OF VIEW, ACTUAL LOCATIONS SHALL BE DETERMINED IN THE FIELD BY THE CONTRACTOR, PER THE MANUFACTURER REPRESENTATIVES RECOMMENDATIONS AND THE ENGINEERS APPROVAL.
- 2 PLAN ELEVATIONS - U.S.G.S. MEAN SEA LEVEL DATUM.
- 3 ALL ELEVATIONS SHOWN ON THE PLANS ARE ESTABLISHED FORM U.S.G.S. MEAN SEA LEVEL DATUM.
- 4 U-BOLTS SHALL BE PRODUCED FROM ASTM A276, TYPE 304, 304L, 316, CONDITION A , COLD FINISH, OR AN EQUIVALENT MATERIAL ACCEPTABLE TO THE ENGINEER. ALL NUTS SHALL BE STAINLESS STEEL CONFORMING TO ASTM A194, GRADE 8 (AISI TYPE 304) OR GRADE 8F (AISI TYPE 303). THE NUTS SHALL BE LOCKNUTS WITH NYLON OR STEEL INSERTS AND SEMI FINISHED HEXAGONAL HEADS EQUIVALENT TO THE FINISHED HEX SERIES OF THE AMERICAN NATIONAL STANDARD. ALL WASHERS SHALL BE STAINLESS STEEL CONFORMING TO ASTM 240, TYPE 302 OR 304.
- 5 ALL BOLTS, SCREWS, NUTS AND WASHERS SHALL BE STAINLESS STEEL. ANTI-SEIZE PASTE COMPOUND SHALL BE USED ON ALL MOUNTING HARDWARE FIELD CONNECTIONS. ALL CCTV MOUNTING METHODS AND MOUNTING MATERIAL SHALL BE PRE- APPROVED BY THE ENGINEER.
- 6 UNDERGROUND CABLE MARKING TAPE SHALL BE INSTALLED WITH ALL TRENCH & BACKFILL FOR ELECTRICAL WORK IN ACCORDANCE WITH ARTICLES 815.03 (d) & 1066.05 OF THE STANDARD SPECIFICATIONS.
- 7 A 1/4" DIA. NYLON ROPE SHALL BE INSTALLED IN ALL CONDUIT RUNS. THE COST OF PULL ROPE SHALL BE INCLUDED IN THE PROPOSED ELECTRIC CABLE INSTALLATION IN THAT CONDUIT.
- 8 THE CONTRACTOR SHALL NOT DRILL ANY HOLES IN THE BEAMS, DECK, OR SUBSTRUCTURE OF THE BRIDGE, UNLESS OTHERWISE APPROVED BY THE ENGINEER.
- 9 ALL GROUND RODS SUPPLIED FOR THIS PROJECT SHALL BE 3/4" DIAMETER X 12'-0" LONG.
- 10 THE LOCATION OF EXISTING WATER MAINS, GAS MAINS, SEWERS, ELECTRIC POWER LINES, TELEPHONE LINES AND OTHER UTILITIES AS SHOWN ON THE PLANS ARE BASED ON CAREFUL FIELD INVESTIGATION AND THE BEST INFORMATION AVAILABLE, BUT THEY ARE NOT GUARANTEED. IT SHALL BE THE CONTRACTOR'S RESPONSIBILITY TO ASCERTAIN THEIR EXACT LOCATION FROM THE UTILITY COMPANIES AND BY FIELD INSPECTION.
- 11 ALL UTILITIES SHALL BE LOCATED IN FIELD PRIOR TO ANY ATTEMPT TO CONSTRUCT ANY COMPONENT OF THE VARIOUS CCTV CAMERA SYSTEM. ILLINOIS STATE LAW REQUIRES A 48-HOUR NOTICE BE GIVEN TO UTILITIES BEFORE DIGGING. FIELD MARKING OF FACILITIES MAY BE OBTAINED BY PROVIDING A MINIMUM OF 96-HOURS ADVANCE NOTICE TO THE RESIDENT ENGINEER SO THAT THE UTILITY COMPANIES CAN BE NOTIFIED.
- 12 COORDINATION WITH THE DEPARTMENTS BUREAU OF OPERATIONS IS REQUIRED BEFORE ANY TRENCHING SHALL BE DONE TO LOCATE HIGHWAY LIGHTING/PUMP STATION FACILITIES. PH: (217)558-6716 OR (217)622-0608.
- 13 THE AREAS THAT ARE DISTURBED DUE TO THE DIGGING OR TRENCHING SHALL BE COMPLETED ON A WEEKLY BASIS USING SEEDING, CLASS 2 AND MULCH METHOD 1 AND SHALL CONFORM TO THE REQUIREMENTS OF SECTION 251 OF THE STANDARD SPECIFICATIONS EXCEPT THAT NO EMULSIFIED ASPHALT SHALL BE USED. THE COST SHALL BE INCIDENTAL TO THE CONTRACT.
- 14 THE CONTRACTOR MUST COORDINATE AND COOPERATE WITH THE DEPARTMENT AND THE INVOLVED PARTIES AS DIRECTED BY THE DEPARTMENT
- 15 EXISTING CONDUIT AND PULL POINT LOCATIONS TAKEN FROM HISTORICAL DATA. CONTRACTOR SHALL FIELD VERIFY EXISTING CONDUIT SIZES AND LOCATIONS PRIOR TO INSTALLING PROPOSED FIBER OPTIC CABLE WITHIN EXISTING CONDUIT.
- 16 BENDING RADIUS OF FIBER OPTIC CABLE SHALL NOT EXCEED SIX (6) INCHES.
- 17 EXACT FIELD LOCATIONS OF ITS EQUIPMENT SHALL BE AS DIRECTED BY THE ENGINEER. THE CONTRACTOR SHALL TAKE CARE NOT TO INSTALL ITS EQUIPMENT IN DRAINAGE AREAS.
- 18 THE CONTRACTOR SHALL SUBMIT SHOP DRAWINGS, CONSTRUCTION METHODOLOGIES, PRODUCT MANUFACTURER SPECIFICATIONS, OWNERS MANUALS, AND USER MANUALS BEFORE PROCURING AND INSTALLING ANY ITS EQUIPMENT AS PART OF THIS CONTRACT. ALL PROPOSED ITS WORK SHALL BE REVIEWED AND APPROVED BY THE DEPARTMENT.
- 19 THE CONTRACTOR SHALL BE RESPONSIBLE FOR COORDINATING TRAFFIC CONTROL FOR THE INSTALLATION OF ITS RELATED EQUIPMENT WITH OTHER CONTRACTS AND WORK IN THE AREA.

- 20 REMOVE EXISTING FIBERS FROM EXISTING CONDUITS THAT THE PROPOSED FIBERS ARE TO BE INSTALLED. EXISTING FIBERS MAY BE USED AS A PULL-LINE.
- 21 EXTRA CABLE SHALL BE LEFT IN EACH HAND HOLE AND DOUBLE HANDHOLE. STORAGE OF ADDITIONAL EXTRA CABLE IN EACH HANDHOLE SHALL BE OILED. THESE COILS SHALL BE BOUND AT A MINIMUM OF THREE POINTS AROUND THE COIL PERIMETER AND SUPPORTED IN THEIR STATIC STORAGE POSITION. THE MINIMUM OF EXTRA CALE AMOUNTS SHALL BE AS FOLLOWS UNLESS STATED DIFFERENTLY ON THE PLAN SHEETS.

LOCATION:	EXTRA CABLE LENGTH: FEET
HANDHOLE	10.0 FEET
DOUBLE HANDHOLE	50.0 FEET
CONTROLLER	6.0 FEET
HANDHOLE NEXT TO CONTROLLER	50.0 FEET
DOUBLE HANDHOLE NEXT TO CONTROLLER	100.0 FEET

BEGIN PROJECT



END PROJECT

FILE NAME = S:\CONTRMINT_CAD\72734 - VARIOUS (VARIOUS) - TAYLORVILLE - PANA - ITS - CHRISTIAN	USER NAME = Timothy.Sharp	DESIGNED - _____	REVISED - _____
Default	PLOT SCALE = 40.0000' / in.	CHECKED - _____	REVISED - _____
	PLOT DATE = 3/26/2024	DATE - _____	REVISED - _____

**STATE OF ILLINOIS  
DEPARTMENT OF TRANSPORTATION**

**LOCATION MAP  
PANA**

SCALE: \_\_\_\_\_ SHEET \_\_\_\_\_ OF \_\_\_\_\_ SHEETS STA. \_\_\_\_\_ TO STA. \_\_\_\_\_

F.A. RTE.	SECTION	COUNTY	TOTAL SHEETS	SHEET NO.
VAR	D6 ITS 2024-1	CHRISTIAN	40	5
			CONTRACT NO. 72734	
ILLINOIS FED. AID PROJECT				





BEGIN PROJECT IL 29



ENE PROJECT IL 29

END PROJECT  
LINCOLN TRAIL

BEGIN PROJECT  
LINCOLN TRAIL

REV. - MS

FILE NAME =	USER NAME = Timothy.Sharp	DESIGNED -	REVISED -
S:\CONTRMINT_CAD\72734 - VARIOUS (VARIOUS) - TAYLORVILLE - PANA - ITS - CHRISTIAN CD	DRAWN-2024\plene\72734-sht-5-6-plene.dwg	CHECKED -	REVISED -
Default	PLOT DATE = 3/26/2024	DATE -	REVISED -

STATE OF ILLINOIS  
DEPARTMENT OF TRANSPORTATION

LOCATION MAP  
TAYLORVILLE

SCALE: \_\_\_\_\_ SHEET \_\_\_\_\_ OF \_\_\_\_\_ SHEETS STA. \_\_\_\_\_ TO STA. \_\_\_\_\_

F.A. RTE.	SECTION	COUNTY	TOTAL SHEETS	SHEET NO.
VAR	D6 ITS 2024-1	CHRISTIAN	40	6
ILLINOIS FED. AID PROJECT			CONTRACT NO. 72734	





CODE NO.	SCHEDULE OF QUANTITIES	UNIT	TOTAL QUANTITY
42400100	PORTLAND CEMENT CONCRETE SIDEWALK 4"	SQ FT	25
44000600	SIDEWALK REMOVAL	SQ FT	25
81028340	UNDERGROUND CONDUIT, PVC, 1 1/2" DIA.	FOOT	455
85706000	INTERSECTION MONITOR UNIT	EACH	1
87900200	DRILL EXISTING HANDHOLE	EACH	2
89502210	MODIFY EXISTING CONTROLLER CABINET	EACH	1
X8710103	ETHERNET SWITCH	EACH	1
X1400076	COBALT CONTROLLER	EACH	1
X8140105	HANDHOLE (SPECIAL)	EACH	1
X8710029	FIBER OPTIC CABLE 24 FIBERS, SINGLE MODE	FOOT	543

MODEL: P:\d6\h...  
 FILE NAME: S:\CONTRACT\CAID\72724 - VARIOUS (VARIOUS) - TAYLORVILLE - PANA - ITS - CHRISTIAN CO. - (6-14-2024)\jplbms72724-rtr-7-30-fiber-d6.rvt

USER NAME = Timothy,Sharp	DESIGNED - _____	REVISED - _____
PLOT SCALE = 1,0000' / in.	DRAWN - _____	REVISED - _____
PLOT DATE = 3/27/2024	CHECKED - _____	REVISED - _____
	DATE - _____	REVISED - _____

**STATE OF ILLINOIS  
DEPARTMENT OF TRANSPORTATION**

**PANA PLAN**

SCALE: \_\_\_\_\_ SHEET \_\_\_\_\_ OF \_\_\_\_\_ SHEETS STA. \_\_\_\_\_ TO STA. \_\_\_\_\_

F.A. RTE.	SECTION	COUNTY	TOTAL SHEETS	SHEET NO.
	D6 ITS 2024-1	CHRISTIAN	40	7
CONTRACT NO. 72724				
ILLINOIS FED. AID PROJECT				





CODE NO.	SCHEDULE OF QUANTITIES	UNIT	TOTAL QUANTITY
85706000	INTERSECTION MONITOR UNIT	EACH	1
87900200	DRILL EXISTING HANDHOLE	EACH	1
89502210	MODIFY EXISTING CONTROLLER CABINET	EACH	1
X8710103	ETHERNET SWITCH	EACH	1
X1400076	COBALT CONTROLLER	EACH	1
X1400155	REMOVAL OF FIBER OPTIC CABLE	FOOT	529
X8710029	FIBER OPTIC CABLE 24 FIBERS, SINGLE MODE	FOOT	609

MODEL: P:\d6\p1\... FILE NAME: S:\CONTRACT\... CAD: 72724 - VARIOUS (VARIOUS) - TAYLORVILLE - PANA - ITS - CHRISTIAN CO. - (6-14-2024)\jlp\...

USER NAME = Timothy.Sharp	DESIGNED - _____	REVISED - _____
PLOT SCALE = 1,000' / in.	DRAWN - _____	REVISED - _____
PLOT DATE = 3/27/2024	CHECKED - _____	REVISED - _____
	DATE - _____	REVISED - _____

**STATE OF ILLINOIS**  
**DEPARTMENT OF TRANSPORTATION**

**PANA PLAN**  
 SCALE: \_\_\_\_\_ SHEET \_\_\_\_\_ OF \_\_\_\_\_ SHEETS STA. \_\_\_\_\_ TO STA. \_\_\_\_\_

F.A. RTE.	SECTION	COUNTY	TOTAL SHEETS	SHEET NO.
	D6 ITS 2024-1	CHRISTIAN	40	8
			CONTRACT NO. 72724	
		ILLINOIS FED. AID PROJECT		





CODE NO.	SCHEDULE OF QUANTITIES	UNIT	TOTAL QUANTITY
42400100	PORTLAND CEMENT CONCRETE SIDEWALK 4"	SQ FT	25
44000600	SIDEWALK REMOVAL	SQ FT	25
81028340	UNDERGROUND CONDUIT, PVC, 1 1/2" DIA.	FOOT	345
85706000	INTERSECTION MONITOR UNIT	EACH	2
87900200	DRILL EXISTING HANDHOLE	EACH	1
89502210	MODIFY EXISTING CONTROLLER CABINET	EACH	2
X8710103	ETHERNET SWITCH	EACH	2
X1400076	COBALT CONTROLLER	EACH	2
X1400155	REMOVAL OF FIBER OPTIC CABLE	FOOT	356
X8710029	FIBER OPTIC CABLE 24 FIBERS, SINGLE MODE	FOOT	1150

MODEL: D:\p\h\p\...  
 FILE NAME: S:\CONTRACT\MAINT\_CAD\72724 - VARIOUS (VARIOUS) - TAYLORVILLE - PANA - ITS - CHRISTIAN CO. - (6-14-2024)\jplbms72724-dwg-7-30-fiber-dwg.dwg

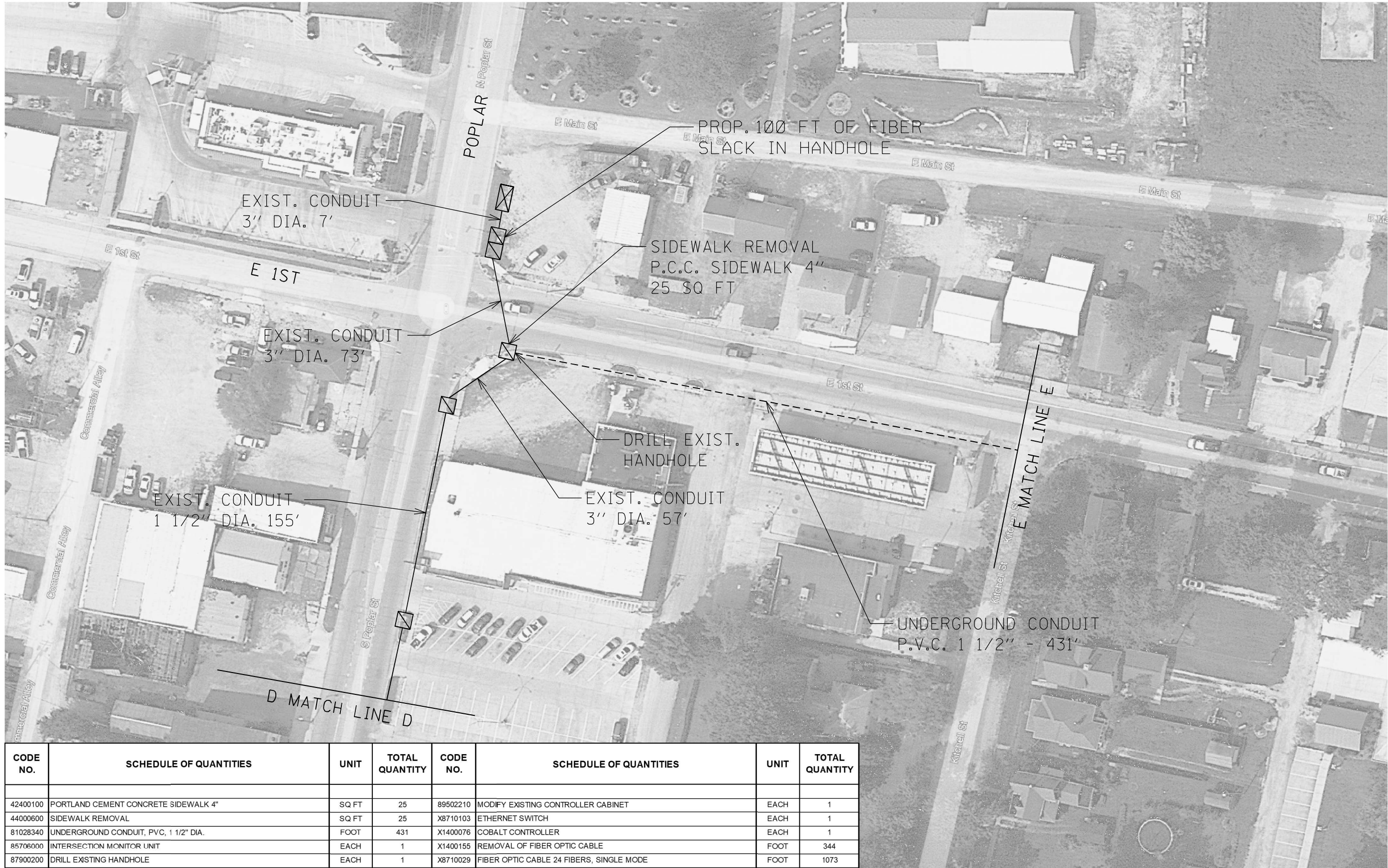
USER NAME = Timothy.Sharp	DESIGNED - _____	REVISED - _____
PLOT SCALE = 1,000' / in.	DRAWN - _____	REVISED - _____
PLOT DATE = 3/27/2024	CHECKED - _____	REVISED - _____
	DATE - _____	REVISED - _____

**STATE OF ILLINOIS  
DEPARTMENT OF TRANSPORTATION**

<b>PANA PLAN</b>	
SCALE: _____	SHEET _____ OF _____ SHEETS STA. _____ TO STA. _____

F.A. RTE.	SECTION	COUNTY	TOTAL SHEETS	SHEET NO.
	D6 ITS 2024-1	CHRISTIAN	40	9
			CONTRACT NO. 72724	
ILLINOIS FED. AID PROJECT				





CODE NO.	SCHEDULE OF QUANTITIES	UNIT	TOTAL QUANTITY	CODE NO.	SCHEDULE OF QUANTITIES	UNIT	TOTAL QUANTITY
42400100	PORTLAND CEMENT CONCRETE SIDEWALK 4"	SQ FT	25	89502210	MODIFY EXISTING CONTROLLER CABINET	EACH	1
44000600	SIDEWALK REMOVAL	SQ FT	25	X8710103	ETHERNET SWITCH	EACH	1
81028340	UNDERGROUND CONDUIT, PVC, 1 1/2" DIA.	FOOT	431	X1400076	COBALT CONTROLLER	EACH	1
85706000	INTERSECTION MONITOR UNIT	EACH	1	X1400155	REMOVAL OF FIBER OPTIC CABLE	FOOT	344
87900200	DRILL EXISTING HANDHOLE	EACH	1	X8710029	FIBER OPTIC CABLE 24 FIBERS, SINGLE MODE	FOOT	1073

MODEL: D:\p\h\p\...  
 FILE NAME: S:\CONTRACT\...  
 TAYLORVILLE - PANA - ITS - CHRISTIAN CO. - (6-14-2023)\...  
 CAD: 72724 - VARIOUS (VARIOUS) - ...

USER NAME = Timothy,Sharp	DESIGNED - _____	REVISED - _____
PLOT SCALE = 1,0000' / in.	DRAWN - _____	REVISED - _____
PLOT DATE = 3/27/2024	CHECKED - _____	REVISED - _____
	DATE - _____	REVISED - _____

**STATE OF ILLINOIS  
DEPARTMENT OF TRANSPORTATION**

<b>PANA PLAN</b>	
SCALE: _____	SHEET _____ OF _____ SHEETS
STA. _____	TO STA. _____

F.A. RTE.	SECTION	COUNTY	TOTAL SHEETS	SHEET NO.
	D6 ITS 2024-1	CHRISTIAN	40	10
			CONTRACT NO. 72724	
ILLINOIS FED. AID PROJECT				





CODE NO.	SCHEDULE OF QUANTITIES	UNIT	TOTAL QUANTITY
81028340	UNDERGROUND CONDUIT, PVC, 1 1/2" DIA.	FOOT	769
87900200	DRILL EXISTING HANDHOLE	EACH	1
X8140105	HANDHOLE (SPECIAL)	EACH	3
X8710029	FIBER OPTIC CABLE 24 FIBERS, SINGLE MODE	FOOT	789

MODEL: D:\p\h\p...  
 FILE NAME: S:\CONTRACT\CA072724 - VARIOUS (VARIOUS) - TAYLORVILLE - PANA - ITS - CHRISTIAN CO. - (6-14-2023)\jplbms72724-htr-7-30-fiber-draw.dwg

USER NAME = Timothy,Sharp	DESIGNED - _____	REVISED - _____
PLOT SCALE = 1,000' / in.	DRAWN - _____	REVISED - _____
PLOT DATE = 3/27/2024	CHECKED - _____	REVISED - _____
	DATE - _____	REVISED - _____

**STATE OF ILLINOIS**  
**DEPARTMENT OF TRANSPORTATION**

<b>PANA PLAN</b>	
SCALE: _____	SHEET _____ OF _____ SHEETS
STA. _____	TO STA. _____

F.A. RTE.	SECTION	COUNTY	TOTAL SHEETS	SHEET NO.
VAR	D6 ITS 2024-1	CHRISTIAN	40	11
CONTRACT NO. 72724			ILLINOIS FED. AID PROJECT	





CODE NO.	SCHEDULE OF QUANTITIES	UNIT	TOTAL QUANTITY
81028340	UNDERGROUND CONDUIT, PVC, 1 1/2" DIA.	FOOT	850
X8140105	HANDHOLE (SPECIAL)	EACH	3
X8710029	FIBER OPTIC CABLE 24 FIBERS, SINGLE MODE	FOOT	870

MODEL PATH: S:\CONTRACTS\CAD\72724 - VARIOUS (VARIOUS) - TAYLORVILLE - PANA - ITS - CHRISTIAN CO. - (6-14-2023)\jplbms172724-dwg-7-30-fiber.dwg  
 FILE NAME: S:\CONTRACTS\CAD\72724 - VARIOUS (VARIOUS) - TAYLORVILLE - PANA - ITS - CHRISTIAN CO. - (6-14-2023)\jplbms172724-dwg-7-30-fiber.dwg

USER NAME = Timothy,Sharp	DESIGNED - _____	REVISED - _____
PLOT SCALE = 1,0000' / in.	DRAWN - _____	REVISED - _____
PLOT DATE = 3/27/2024	CHECKED - _____	REVISED - _____
	DATE - _____	REVISED - _____

**STATE OF ILLINOIS  
DEPARTMENT OF TRANSPORTATION**

<b>PANA PLAN</b>	
SCALE: _____	SHEET _____ OF _____ SHEETS STA. _____ TO STA. _____

F.A. RTE.	SECTION	COUNTY	TOTAL SHEETS	SHEET NO.
VAR	D6 ITS 2024-1	CHRISTIAN	40	12
CONTRACT NO. 72724				
ILLINOIS FED. AID PROJECT				





CODE NO.	SCHEDULE OF QUANTITIES	UNIT	TOTAL QUANTITY
81028340	UNDERGROUND CONDUIT, PVC, 1 1/2" DIA.	FOOT	459
85706000	INTERSECTION MONITOR UNIT	EACH	1
87900200	DRILL EXISTING HANDHOLE	EACH	1
89502210	MODIFY EXISTING CONTROLLER CABINET	EACH	1
X8710103	ETHERNET SWITCH	EACH	1
X1400076	COBALT CONTROLLER	EACH	1
X8710029	FIBER OPTIC CABLE 24 FIBERS, SINGLE MODE	FOOT	588

MODEL: D:\p\h\p\...  
 FILE NAME: S:\CONTRACTS\...  
 MODEL: D:\p\h\p\...  
 FILE NAME: S:\CONTRACTS\...

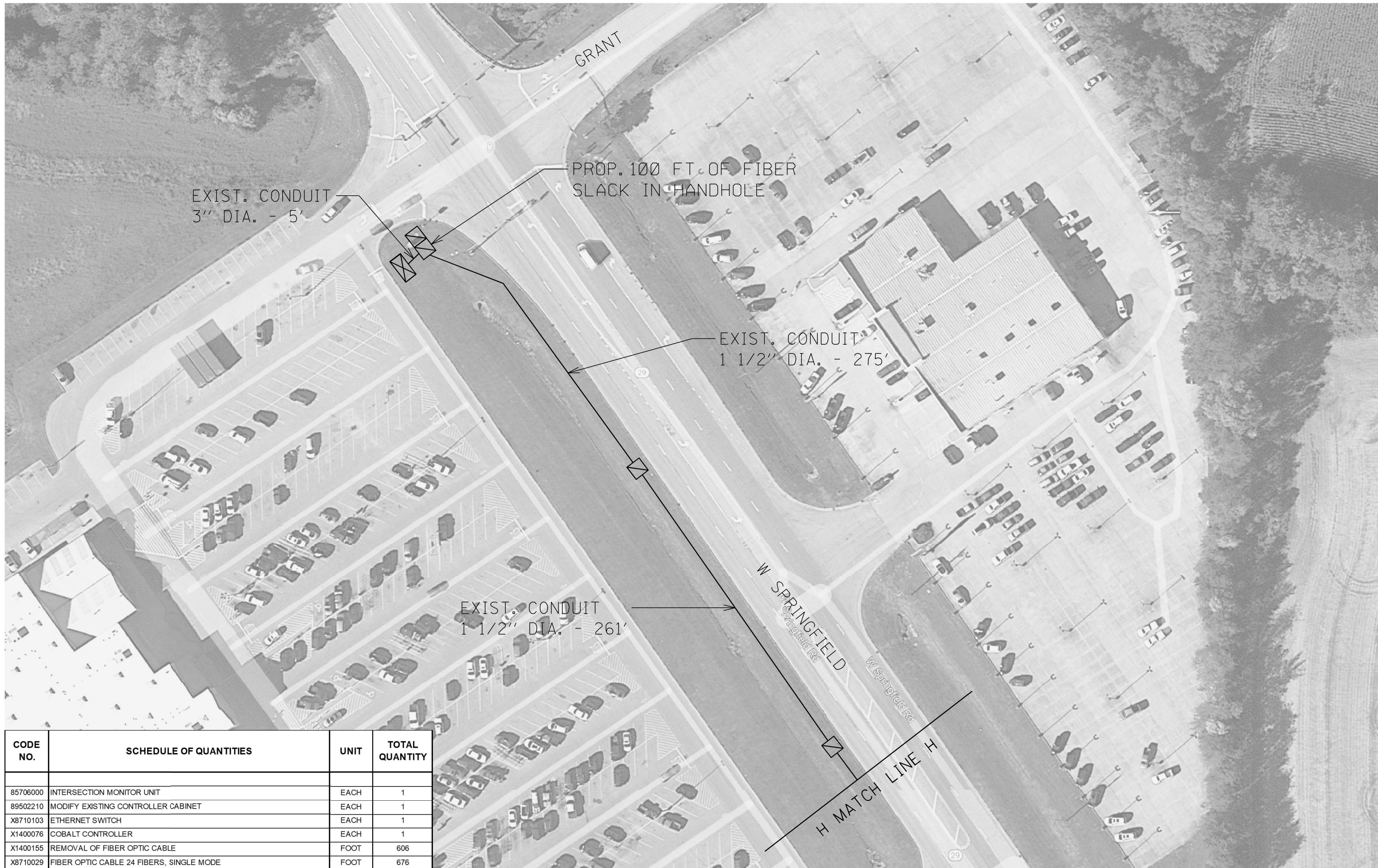
USER NAME = Timothy,Sharp	DESIGNED - _____	REVISED - _____
PLOT SCALE = 1,000' / in.	DRAWN - _____	REVISED - _____
PLOT DATE = 3/27/2024	CHECKED - _____	REVISED - _____
	DATE - _____	REVISED - _____

**STATE OF ILLINOIS**  
**DEPARTMENT OF TRANSPORTATION**

<b>PANA PLAN</b>	
SCALE: _____	SHEET _____ OF _____ SHEETS
STA. _____	TO STA. _____

F.A. RTE.	SECTION	COUNTY	TOTAL SHEETS	SHEET NO.
VAR	D6 ITS 2024-1	CHRISTIAN	40	13
			CONTRACT NO. 72724	
ILLINOIS FED. AID PROJECT				





CODE NO.	SCHEDULE OF QUANTITIES	UNIT	TOTAL QUANTITY
85706000	INTERSECTION MONITOR UNIT	EACH	1
89502210	MODIFY EXISTING CONTROLLER CABINET	EACH	1
X8710103	ETHERNET SWITCH	EACH	1
X1400076	COBALT CONTROLLER	EACH	1
X1400155	REMOVAL OF FIBER OPTIC CABLE	FOOT	606
X8710029	FIBER OPTIC CABLE 24 FIBERS, SINGLE MODE	FOOT	676

MODEL: D:\p\h\p\...  
 FILE NAME: S:\CONTRACT\...  
 TAYLORVILLE - PANA - ITS - CHRISTIAN CO. - (6-14-2023)\p\h\p\...

USER NAME = Timothy,Sharp	DESIGNED - _____	REVISED - _____
PLOT SCALE = 1,000' / in.	DRAWN - _____	REVISED - _____
PLOT DATE = 3/27/2024	CHECKED - _____	REVISED - _____
	DATE - _____	REVISED - _____

**STATE OF ILLINOIS**  
**DEPARTMENT OF TRANSPORTATION**

**TAYLORVILLE PLAN**

SCALE: \_\_\_\_\_ SHEET \_\_\_\_\_ OF \_\_\_\_\_ SHEETS STA. \_\_\_\_\_ TO STA. \_\_\_\_\_

F.A. RTE.	SECTION	COUNTY	TOTAL SHEETS	SHEET NO.
	D6 ITS 2024-1	CHRISTIAN	40	14
CONTRACT NO. 72724			ILLINOIS FED. AID PROJECT	





CODE NO.	SCHEDULE OF QUANTITIES	UNIT	TOTAL QUANTITY
X1400155	REMOVAL OF FIBER OPTIC CABLE	FOOT	815
X8140105	HANDHOLE (SPECIAL)	EACH	1
X8710029	FIBER OPTIC CABLE 24 FIBERS, SINGLE MODE	FOOT	815
X8130125	REMOVE EXISTING JUNCTION BOX	EACH	1

MODEL PATH: S:\CONTRACTS\CAD\72724 - VARIOUS (VARIOUS) - TAYLORVILLE - PANA - ITS - CHRISTIAN CO - (6-14-2023)\plans\72724-its-chr-7-30-fiber-dwg.dwg

USER NAME = Timothy,Sharp	DESIGNED - _____	REVISED - _____
PLOT SCALE = 1,000' / in.	DRAWN - _____	REVISED - _____
PLOT DATE = 3/27/2024	CHECKED - _____	REVISED - _____
	DATE - _____	REVISED - _____

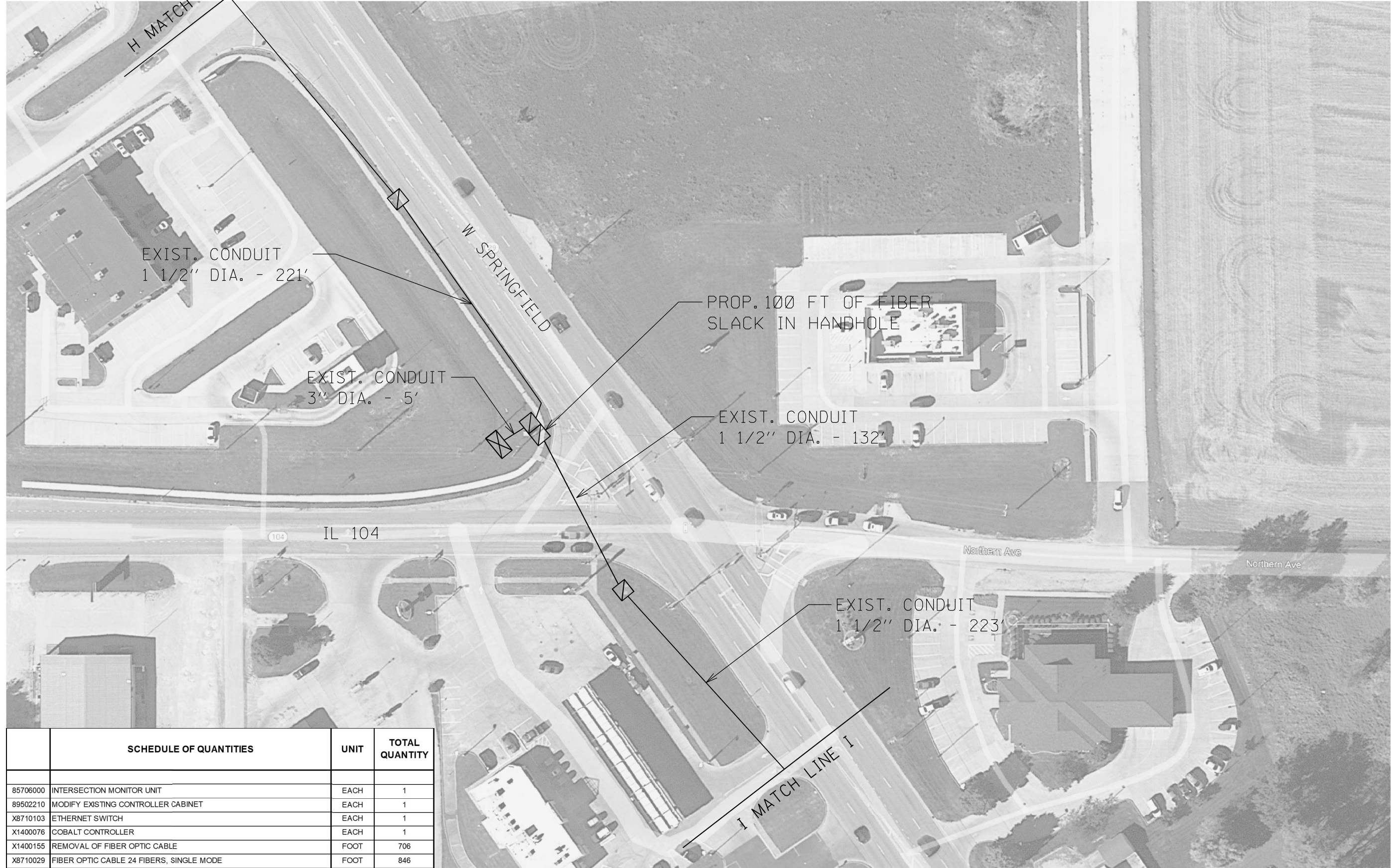
**STATE OF ILLINOIS**  
**DEPARTMENT OF TRANSPORTATION**

**TAYLORVILLE PLAN**

SCALE: \_\_\_\_\_ SHEET \_\_\_\_ OF \_\_\_\_ SHEETS STA. \_\_\_\_\_ TO STA. \_\_\_\_\_

F.A. RTE.	SECTION	COUNTY	TOTAL SHEETS	SHEET NO.
VAR	D6 ITS 2024-1	CHRISTIAN	40	15
CONTRACT NO. 72724			ILLINOIS FED. AID PROJECT	





SCHEDULE OF QUANTITIES		UNIT	TOTAL QUANTITY
85706000	INTERSECTION MONITOR UNIT	EACH	1
89502210	MODIFY EXISTING CONTROLLER CABINET	EACH	1
X8710103	ETHERNET SWITCH	EACH	1
X1400076	COBALT CONTROLLER	EACH	1
X1400155	REMOVAL OF FIBER OPTIC CABLE	FOOT	706
X8710029	FIBER OPTIC CABLE 24 FIBERS, SINGLE MODE	FOOT	846

MODEL: D:\p4\h...  
 FILE NAME: S:\CONTRACT\CA072724 - VARIOUS (VARIOUS) - TAYLORVILLE - PANIA - ITS - CHRISTIAN CO. - (6-14-2023)\p4\hans72724-htr-7-30-fiber-dwg.dwg

USER NAME = Timothy.Sharp	DESIGNED - _____	REVISED - _____
PLOT SCALE = 1,0000' / in.	DRAWN - _____	REVISED - _____
PLOT DATE = 3/27/2024	CHECKED - _____	REVISED - _____
	DATE - _____	REVISED - _____

**STATE OF ILLINOIS  
DEPARTMENT OF TRANSPORTATION**

**TAYLORVILLE PLAN**

SCALE: \_\_\_\_\_ SHEET \_\_\_\_\_ OF \_\_\_\_\_ SHEETS STA. \_\_\_\_\_ TO STA. \_\_\_\_\_

F.A. RTE.	SECTION	COUNTY	TOTAL SHEETS	SHEET NO.
VAR	D6 ITS 2024-1	CHRISTIAN	40	16
CONTRACT NO. 72724			ILLINOIS FED. AID PROJECT	





CODE NO.	SCHEDULE OF QUANTITIES	UNIT	TOTAL QUANTITY
85706000	INTERSECTION MONITOR UNIT	EACH	1
89502210	MODIFY EXISTING CONTROLLER CABINET	EACH	1
X8710103	ETHERNET SWITCH	EACH	1
X1400076	COBALT CONTROLLER	EACH	1
X1400155	REMOVAL OF FIBER OPTIC CABLE	FOOT	905
X8710029	FIBER OPTIC CABLE 24 FIBERS, SINGLE MODE	FOOT	1055

MODEL: D:\p\h\p\...  
 FILE NAME: S:\CONTRACTS\...  
 TAYLORVILLE - PANAMA - ITS - CHRISTIAN CO. - (6-14-2024)\p\h\p\...

USER NAME = Timothy,Sharp	DESIGNED - _____	REVISED - _____
PLOT SCALE = 1,0000' / in.	DRAWN - _____	REVISED - _____
PLOT DATE = 3/27/2024	CHECKED - _____	REVISED - _____
	DATE - _____	REVISED - _____

**STATE OF ILLINOIS  
DEPARTMENT OF TRANSPORTATION**

**TAYLORVILLE PLAN**

SCALE: \_\_\_\_\_ SHEET \_\_\_\_\_ OF \_\_\_\_\_ SHEETS STA. \_\_\_\_\_ TO STA. \_\_\_\_\_

F.A. RTE.	SECTION	COUNTY	TOTAL SHEETS	SHEET NO.
VAR	D6 ITS 2024-1	CHRISTIAN	40	17
			CONTRACT NO. 72724	
		ILLINOIS	FED. AID PROJECT	





CODE NO.	SCHEDULE OF QUANTITIES	UNIT	TOTAL QUANTITY
81028340	UNDERGROUND CONDUIT, PVC, 1 1/2" DIA.	FOOT	201
85706000	INTERSECTION MONITOR UNIT	EACH	1
87900200	DRILL EXISTING HANDHOLE	EACH	1
89502210	MODIFY EXISTING CONTROLLER CABINET	EACH	1
X8710103	ETHERNET SWITCH	EACH	1
X1400076	COBALT CONTROLLER	EACH	1
X1400155	REMOVAL OF FIBER OPTIC CABLE	FOOT	608
X8710029	FIBER OPTIC CABLE 24 FIBERS, SINGLE MODE	FOOT	989

MODEL: D:\p\h\p\...  
 FILE NAME: S:\CONTRACT\MAINT\_CAD\72724 - VARIOUS (VARIOUS) - TAYLORVILLE - PANA - ITS - CHRISTIAN CO. - (6-14-2023)\plans\72724-its-htr-7-30-fiber-dtr.dwg  
 MODEL: D:\p\h\p\...  
 FILE NAME: S:\CONTRACT\MAINT\_CAD\72724 - VARIOUS (VARIOUS) - TAYLORVILLE - PANA - ITS - CHRISTIAN CO. - (6-14-2023)\plans\72724-its-htr-7-30-fiber-dtr.dwg

USER NAME = Timothy,Sharp	DESIGNED - _____	REVISED - _____
PLOT SCALE = 1,0000' / in.	DRAWN - _____	REVISED - _____
PLOT DATE = 3/27/2024	CHECKED - _____	REVISED - _____
	DATE - _____	REVISED - _____

**STATE OF ILLINOIS**  
**DEPARTMENT OF TRANSPORTATION**

**TAYLORVILLE PLAN**

SCALE: \_\_\_\_\_ SHEET \_\_\_\_\_ OF \_\_\_\_\_ SHEETS STA. \_\_\_\_\_ TO STA. \_\_\_\_\_

F.A. RTE.	SECTION	COUNTY	TOTAL SHEETS	SHEET NO.
VAR	D6 ITS 2024-1	CHRISTIAN	40	18
ILLINOIS FED. AID PROJECT			CONTRACT NO. 72724	





CODE NO.	SCHEDULE OF QUANTITIES	UNIT	TOTAL QUANTITY
81028340	UNDERGROUND CONDUIT, PVC, 1 1/2" DIA.	FOOT	469
X8140105	HANDHOLE (SPECIAL)	EACH	1
X8710029	FIBER OPTIC CABLE 24 FIBERS, SINGLE MODE	FOOT	479

MODEL PATH: S:\CONTRACTS\72724 - VARIOUS (VARIOUS) - TAYLORVILLE - PANA - ITS - CHRISTIAN CO. - (6-14-2023)\plans\72724-d6-its-30-fiber-d6-its.dwg  
 FILE NAME: S:\CONTRACTS\72724 - VARIOUS (VARIOUS) - TAYLORVILLE - PANA - ITS - CHRISTIAN CO. - (6-14-2023)\plans\72724-d6-its-30-fiber-d6-its.dwg

USER NAME = Timothy,Sharp	DESIGNED - _____	REVISED - _____
PLOT SCALE = 1,000' / in.	DRAWN - _____	REVISED - _____
PLOT DATE = 3/27/2024	CHECKED - _____	REVISED - _____
	DATE - _____	REVISED - _____

**STATE OF ILLINOIS  
DEPARTMENT OF TRANSPORTATION**

**TAYLORVILLE PLAN**

SCALE: \_\_\_\_\_ SHEET \_\_\_\_\_ OF \_\_\_\_\_ SHEETS STA. \_\_\_\_\_ TO STA. \_\_\_\_\_

F.A. RTE.	SECTION	COUNTY	TOTAL SHEETS	SHEET
VAR	D6 ITS 2024-1	CHRISTIAN	40	19
			CONTRACT NO. 72724	
ILLINOIS FED. AID PROJECT				





CODE NO.	SCHEDULE OF QUANTITIES	UNIT	TOTAL QUANTITY
81028340	UNDERGROUND CONDUIT, PVC, 1 1/2" DIA.	FOOT	908
X8140105	HANDHOLE (SPECIAL)	EACH	2
X8710029	FIBER OPTIC CABLE 24 FIBERS, SINGLE MODE	FOOT	918

MODEL: D:\p\h\p\... FILE NAME: S:\CONTRACT\... CAD: 72724 - VARIOUS (VARIOUS) - TAYLORVILLE - PANA - ITS - CHRISTIAN CO. - (6-14-2023)\j\j\...

USER NAME = Timothy,Sharp	DESIGNED - _____	REVISED - _____
PLOT SCALE = 1,000' / in.	DRAWN - _____	REVISED - _____
PLOT DATE = 3/27/2024	CHECKED - _____	REVISED - _____
	DATE - _____	REVISED - _____

**STATE OF ILLINOIS**  
**DEPARTMENT OF TRANSPORTATION**

**TAYLORVILLE PLAN**

SCALE: \_\_\_\_\_ SHEET \_\_\_\_\_ OF \_\_\_\_\_ SHEETS STA. \_\_\_\_\_ TO STA. \_\_\_\_\_

F.A. RTE.	SECTION	COUNTY	TOTAL SHEETS	SHEET NO.
VAR	D6 ITS 2024-1	CHRISTIAN	40	20
CONTRACT NO. 72724			ILLINOIS FED. AID PROJECT	





CODE NO.	SCHEDULE OF QUANTITIES	UNIT	TOTAL QUANTITY
81028340	UNDERGROUND CONDUIT, PVC, 1 1/2" DIA.	FOOT	1103
X8140105	HANDHOLE (SPECIAL)	EACH	2
X8710029	FIBER OPTIC CABLE 24 FIBERS, SINGLE MODE	FOOT	1123

MODEL: D:\p\h\p\...  
 FILE NAME: S:\CONTRACT\...  
 CAD: 72724 - VARIOUS (VARIOUS) - TAYLORVILLE - PANA - ITS - CHRISTIAN CO. - (6-14-2023)\j\p\...  
 PLOT DATE: 3/27/2024

USER NAME = Timothy,Sharp	DESIGNED - _____	REVISED - _____
PLOT SCALE = 1,000' / in.	DRAWN - _____	REVISED - _____
PLOT DATE = 3/27/2024	CHECKED - _____	REVISED - _____
	DATE - _____	REVISED - _____

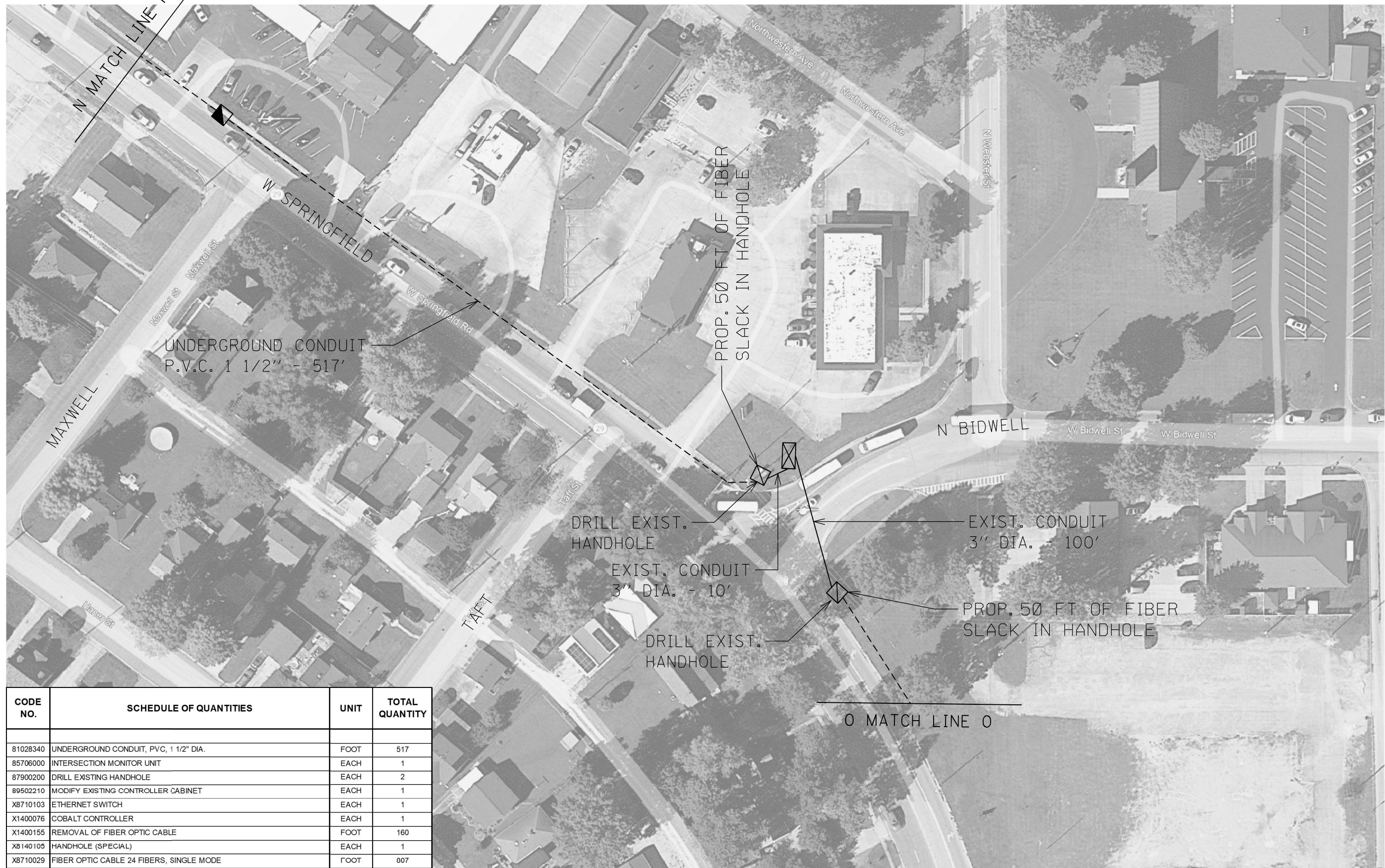
**STATE OF ILLINOIS**  
**DEPARTMENT OF TRANSPORTATION**

**TAYLORVILLE PLAN**

SCALE: \_\_\_\_\_ SHEET \_\_\_\_\_ OF \_\_\_\_\_ SHEETS STA. \_\_\_\_\_ TO STA. \_\_\_\_\_

F.A. RTE.	SECTION	COUNTY	TOTAL SHEETS	SHEET NO.
VAR	D6 ITS 2024-1	CHRISTIAN	40	21
ILLINOIS FED. AID PROJECT			CONTRACT NO. 72724	





CODE NO.	SCHEDULE OF QUANTITIES	UNIT	TOTAL QUANTITY
81028340	UNDERGROUND CONDUIT, PVC, 1 1/2" DIA.	FOOT	517
85706000	INTERSECTION MONITOR UNIT	EACH	1
87900200	DRILL EXISTING HANDHOLE	EACH	2
89502210	MODIFY EXISTING CONTROLLER CABINET	EACH	1
X8710103	ETHERNET SWITCH	EACH	1
X1400076	COBALT CONTROLLER	EACH	1
X1400155	REMOVAL OF FIBER OPTIC CABLE	FOOT	160
X8140105	HANDHOLE (SPECIAL)	EACH	1
X8710029	FIBER OPTIC CABLE 24 FIBERS, SINGLE MODE	FOOT	607

MODEL: D:\p\h\p\... FILE NAME: S:\CONTRACT\... - TAYLORVILLE - PANIA - ITS - CHRISTIAN CO. - (6-14-2023)\j\p\... - TA...

USER NAME = Timothy,Sharp	DESIGNED - _____	REVISED - _____
PLOT SCALE = 1,0000' / in.	DRAWN - _____	REVISED - _____
PLOT DATE = 3/27/2024	CHECKED - _____	REVISED - _____
	DATE - _____	REVISED - _____

**STATE OF ILLINOIS  
DEPARTMENT OF TRANSPORTATION**

**TAYLORVILLE PLAN**

SCALE: \_\_\_\_\_ SHEET \_\_\_\_\_ OF \_\_\_\_\_ SHEETS STA. \_\_\_\_\_ TO STA. \_\_\_\_\_

F.A. RTE.	SECTION	COUNTY	TOTAL SHEETS	SHEET NO.
	D6 ITS 2024-1	CHRISTIAN	40	22
CONTRACT NO. 72724			ILLINOIS FED. AID PROJECT	





CODE NO.	SCHEDULE OF QUANTITIES	UNIT	TOTAL QUANTITY
81028340	UNDERGROUND CONDUIT, PVC, 1 1/2" DIA.	FOOT	550
X8710029	FIBER OPTIC CABLE 24 FIBERS, SINGLE MODE	FOOT	550

MODEL PATH: S:\CONTRACTS\CAD\72724 - VARIOUS (VARIOUS) - TAYLORVILLE - PANAMA - ITS - CHRISTIAN CO. - (6-14-2023)\jplbans72724-dwg-7-30-fiber-dwg.dwg

USER NAME = Timothy,Sharp	DESIGNED - _____	REVISED - _____
PLOT SCALE = 1,000' / in.	DRAWN - _____	REVISED - _____
PLOT DATE = 3/27/2024	CHECKED - _____	REVISED - _____
	DATE - _____	REVISED - _____

**STATE OF ILLINOIS**  
**DEPARTMENT OF TRANSPORTATION**

**TAYLORVILLE PLAN**

SCALE: \_\_\_\_\_ SHEET \_\_\_\_\_ OF \_\_\_\_\_ SHEETS STA. \_\_\_\_\_ TO STA. \_\_\_\_\_

F.A. RTE.	SECTION	COUNTY	TOTAL SHEETS	SHEET NO.
VAR	D6 ITS 2024-1	CHRISTIAN	40	23
ILLINOIS FED. AID PROJECT			CONTRACT NO. 72724	





CODE NO.	SCHEDULE OF QUANTITIES	UNIT	TOTAL QUANTITY
81028340	UNDERGROUND CONDUIT, PVC, 1 1/2" DIA.	FOOT	510
X8140105	HANDHOLE (SPECIAL)	EACH	1
X8710029	FIBER OPTIC CABLE 24 FIBERS, SINGLE MODE	FOOT	520

MODEL: D:\p\h\p\...  
 FILE NAME: S:\CONTRACT\...  
 MODEL: D:\p\h\p\...  
 FILE NAME: S:\CONTRACT\...

USER NAME = Timothy,Sharp	DESIGNED - _____	REVISED - _____
	DRAWN - _____	REVISED - _____
PLOT SCALE = 1,000' / in.	CHECKED - _____	REVISED - _____
PLOT DATE = 3/27/2024	DATE - _____	REVISED - _____

**STATE OF ILLINOIS**  
**DEPARTMENT OF TRANSPORTATION**

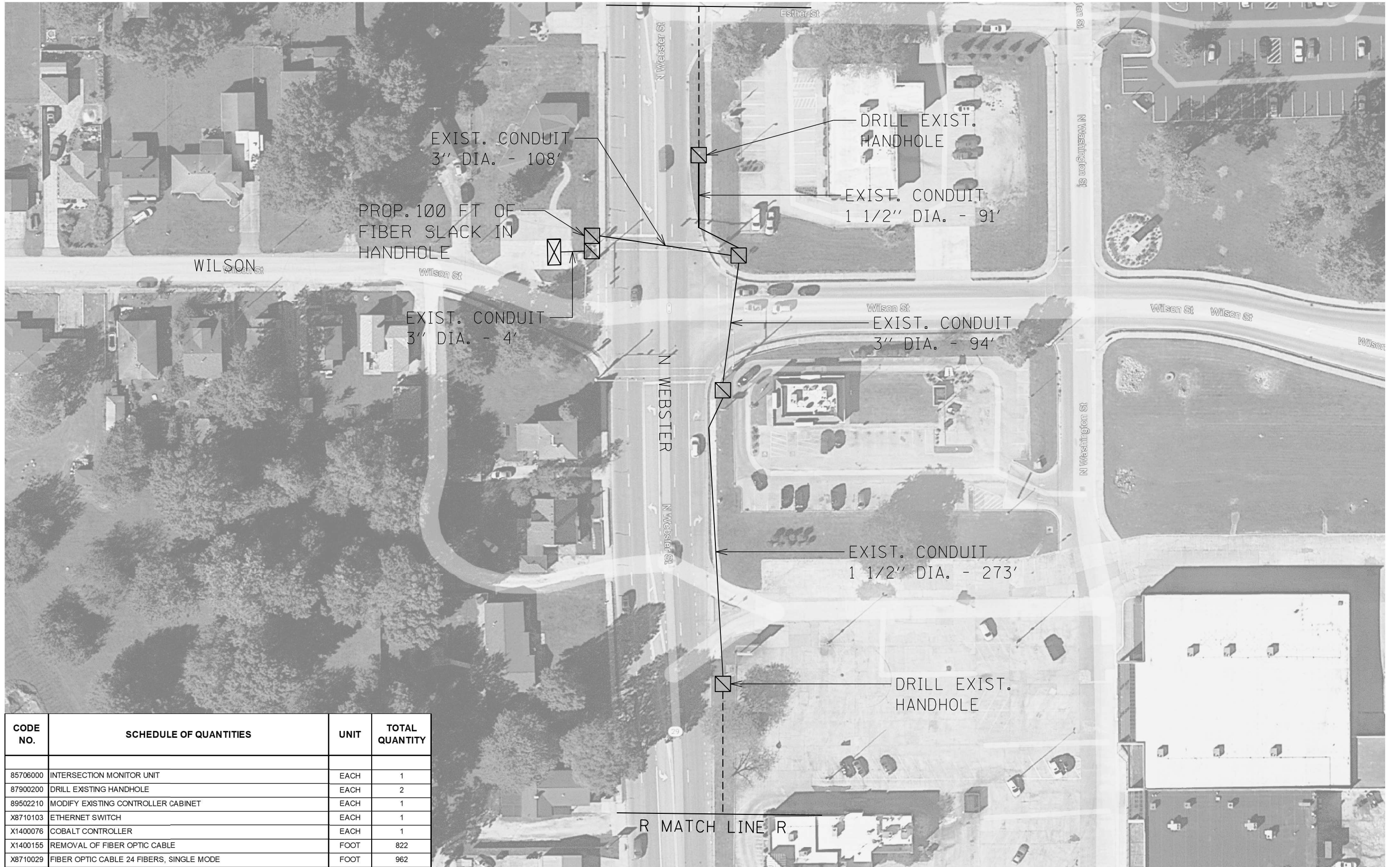
**TAYLORVILLE PLAN**

SCALE: \_\_\_\_\_ SHEET \_\_\_\_\_ OF \_\_\_\_\_ SHEETS STA. \_\_\_\_\_ TO STA. \_\_\_\_\_

F.A. RTE.	SECTION	COUNTY	TOTAL SHEETS	SHEET NO.
VAR	D6 ITS 2024-1	CHRISTIAN	40	24
			CONTRACT NO. 72724	
ILLINOIS FED. AID PROJECT				



Q MATCH LINE Q



CODE NO.	SCHEDULE OF QUANTITIES	UNIT	TOTAL QUANTITY
85706000	INTERSECTION MONITOR UNIT	EACH	1
87900200	DRILL EXISTING HANDHOLE	EACH	2
89502210	MODIFY EXISTING CONTROLLER CABINET	EACH	1
X8710103	ETHERNET SWITCH	EACH	1
X1400076	COBALT CONTROLLER	EACH	1
X1400155	REMOVAL OF FIBER OPTIC CABLE	FOOT	822
X8710029	FIBER OPTIC CABLE 24 FIBERS, SINGLE MODE	FOOT	962

MODEL: D:\p\h\p...  
 FILE NAME: S:\CONTRACT\INT CAD\72724 - VARIOUS (VARIOUS) - TAYLORVILLE - PANAMA - ITS - CHRISTIAN CO. - (6-14-2024)\jplbans72724-rtr-7-30-fiber-4tr.dwg

USER NAME = Timothy,Sharp	DESIGNED - _____	REVISED - _____
PLOT SCALE = 1,0000' / in.	DRAWN - _____	REVISED - _____
PLOT DATE = 3/27/2024	CHECKED - _____	REVISED - _____
	DATE - _____	REVISED - _____

**STATE OF ILLINOIS  
DEPARTMENT OF TRANSPORTATION**

**TAYLORVILLE PLAN**

SCALE: \_\_\_\_\_ SHEET \_\_\_\_\_ OF \_\_\_\_\_ SHEETS STA. \_\_\_\_\_ TO STA. \_\_\_\_\_

F.A. RTE.	SECTION	COUNTY	TOTAL SHEETS	SHEET NO.
	D6 ITS 2024-1	CHRISTIAN	40	25
			CONTRACT NO. 72724	
ILLINOIS FED. AID PROJECT				





CODE NO.	SCHEDULE OF QUANTITIES	UNIT	TOTAL QUANTITY
81028340	UNDERGROUND CONDUIT, PVC, 1 1/2" DIA.	FOOT	639
X8140105	HANDHOLE (SPECIAL)	EACH	1
X8710029	FIBER OPTIC CABLE 24 FIBERS, SINGLE MODE	FOOT	649

MODEL PATH: S:\CONTRACTS\CAD\72724 - VARIOUS (VARIOUS) - TAYLORVILLE - PANA - ITS - CHRISTIAN CO. - (6-14-2023)\plans\72724-its-chr-7-30-fiber-ctn.dwg  
 FILE NAME: S:\CONTRACTS\CAD\72724 - VARIOUS (VARIOUS) - TAYLORVILLE - PANA - ITS - CHRISTIAN CO. - (6-14-2023)\plans\72724-its-chr-7-30-fiber-ctn.dwg

USER NAME = Timothy,Sharp	DESIGNED - _____	REVISED - _____
PLOT SCALE = 1,0000' / in.	DRAWN - _____	REVISED - _____
PLOT DATE = 3/27/2024	CHECKED - _____	REVISED - _____
	DATE - _____	REVISED - _____

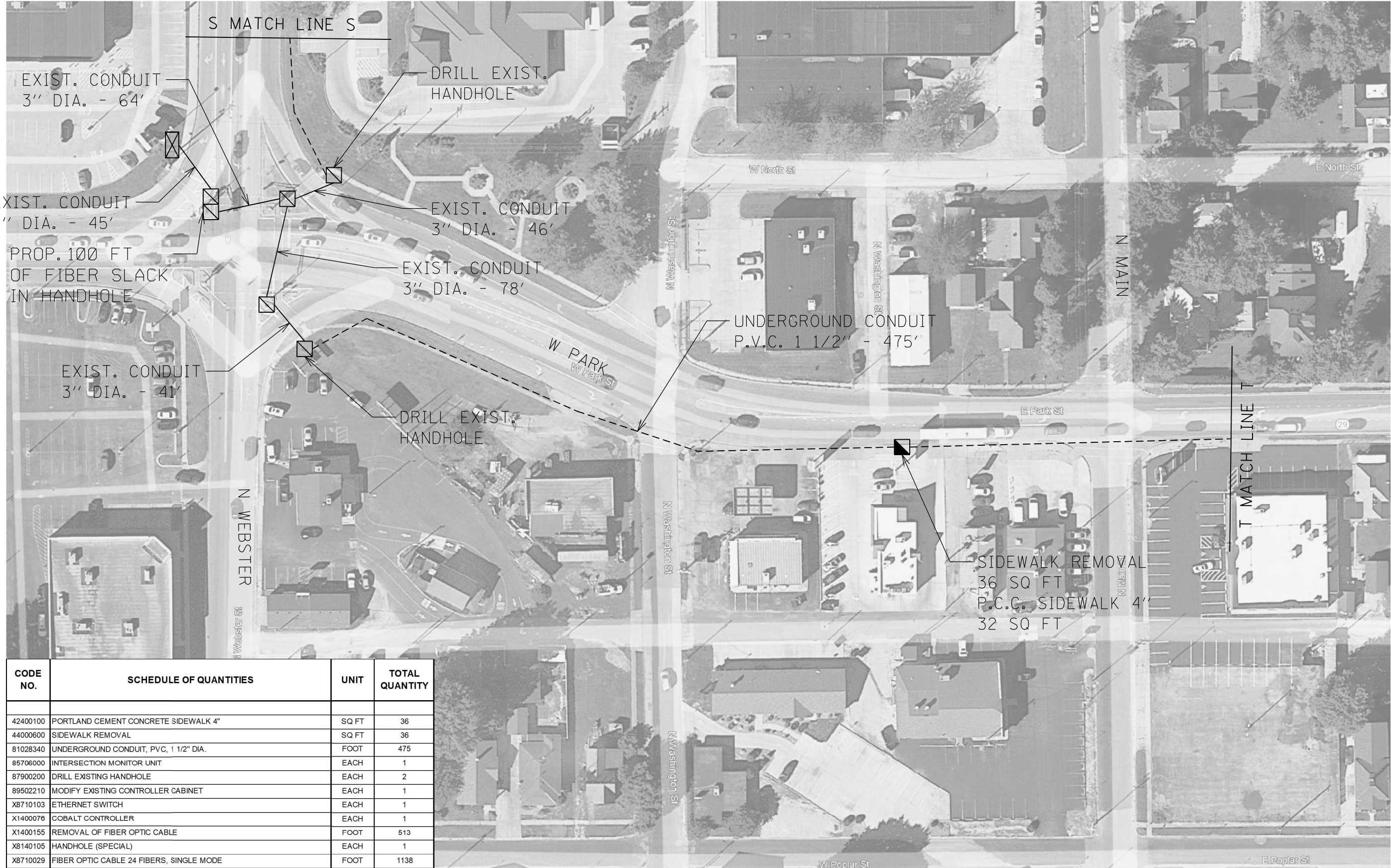
**STATE OF ILLINOIS  
DEPARTMENT OF TRANSPORTATION**

**TAYLORVILLE PLAN**

SCALE: \_\_\_\_\_ SHEET \_\_\_\_\_ OF \_\_\_\_\_ SHEETS STA. \_\_\_\_\_ TO STA. \_\_\_\_\_

F.A. RTE.	SECTION	COUNTY	TOTAL SHEETS	SHEET NO.
VAR	D6 ITS 2024-1	CHRISTIAN	40	26
CONTRACT NO. 72724			ILLINOIS FED. AID PROJECT	





CODE NO.	SCHEDULE OF QUANTITIES	UNIT	TOTAL QUANTITY
42400100	PORTLAND CEMENT CONCRETE SIDEWALK 4"	SQ FT	36
44000600	SIDEWALK REMOVAL	SQ FT	36
81028340	UNDERGROUND CONDUIT, PVC, 1 1/2" DIA.	FOOT	475
85706000	INTERSECTION MONITOR UNIT	EACH	1
87900200	DRILL EXISTING HANDHOLE	EACH	2
89502210	MODIFY EXISTING CONTROLLER CABINET	EACH	1
X8710103	ETHERNET SWITCH	EACH	1
X1400076	COBALT CONTROLLER	EACH	1
X1400155	REMOVAL OF FIBER OPTIC CABLE	FOOT	513
X8140105	HANDHOLE (SPECIAL)	EACH	1
X8710029	FIBER OPTIC CABLE 24 FIBERS, SINGLE MODE	FOOT	1138

MODEL: D:\p1\h\...  
 FILE NAME: S:\CONTRACT\...  
 TAYLORVILLE - PANA - ITS - CHRISTIAN CO. - (6-14-2023)\...

USER NAME = Timothy,Sharp	DESIGNED - _____	REVISED - _____
DRAWN - _____	CHECKED - _____	REVISED - _____
PLOT SCALE = 1,000' / in.	DATE - _____	REVISED - _____
PLOT DATE = 3/27/2024		

**STATE OF ILLINOIS  
DEPARTMENT OF TRANSPORTATION**

**TAYLORVILLE PLAN**

SCALE: \_\_\_\_\_ SHEET \_\_\_\_\_ OF \_\_\_\_\_ SHEETS STA. \_\_\_\_\_ TO STA. \_\_\_\_\_

F.A. RTE.	SECTION	COUNTY	TOTAL SHEETS	SHEET NO.
	D6 ITS 2024-1	CHRISTIAN	40	27
CONTRACT NO. 72724			ILLINOIS FED. AID PROJECT	



MODEL PATH: \\S:\CONTRACTS\CAD\72724 - VARIOUS (VARIOUS) - TAYLORVILLE - PANA - ITS - CHRISTIAN CO - (6-14-2023)\jplbans172724-d6-its-7-30-fiber-d6-its.dwg



CODE NO.	SCHEDULE OF QUANTITIES	UNIT	TOTAL QUANTITY
42400100	PORTLAND CEMENT CONCRETE SIDEWALK 4"	SQ FT	72
44000600	SIDEWALK REMOVAL	SQ FT	72
81028340	UNDERGROUND CONDUIT, PVC, 1 1/2" DIA.	FOOT	880
85706000	INTERSECTION MONITOR UNIT	EACH	1
89502210	MODIFY EXISTING CONTROLLER CABINET	EACH	1
X8710103	ETHERNET SWITCH	EACH	1
X1400076	COBALT CONTROLLER	EACH	1
X1400155	REMOVAL OF FIBER OPTIC CABLE	FOOT	211
X8140105	HANDHOLE (SPECIAL)	EACH	1
X8710029	FIBER OPTIC CABLE 24 FIBERS, SINGLE MODE	FOOT	1241
X8130125	REMOVE EXISTING JUNCTION BOX	EACH	2

USER NAME = Timothy,Sharp	DESIGNED - _____	REVISED - _____
PLOT SCALE = 1,000' / in.	DRAWN - _____	REVISED - _____
PLOT DATE = 3/27/2024	CHECKED - _____	REVISED - _____
	DATE - _____	REVISED - _____

**STATE OF ILLINOIS  
DEPARTMENT OF TRANSPORTATION**

**TAYLORVILLE PLAN**

SCALE: \_\_\_\_\_ SHEET \_\_\_\_ OF \_\_\_\_ SHEETS STA. \_\_\_\_\_ TO STA. \_\_\_\_\_

F.A. RTE.	SECTION	COUNTY	TOTAL SHEETS	SHEET NO.
	D6 ITS 2024-1	CHRISTIAN	40	28
CONTRACT NO. 72724				
ILLINOIS FED. AID PROJECT				



MODEL PATH: S:\CONTRACTS\CAD\72724 - VARIOUS (VARIOUS) - TAYLORVILLE - PANA - ITS - CHRISTIAN CO. - (6-14-2024)\plans\72724-its-chr-7-30-fiber-dns.dwg



CODE NO.	SCHEDULE OF QUANTITIES	UNIT	TOTAL QUANTITY
42400100	PORTLAND CEMENT CONCRETE SIDEWALK 4"	SQ FT	30
44000600	SIDEWALK REMOVAL	SQ FT	30
81028340	UNDERGROUND CONDUIT, PVC, 1 1/2" DIA.	FOOT	438
85706000	INTERSECTION MONITOR UNIT	EACH	1
87900200	DRILL EXISTING HANDHOLE	EACH	1
89502210	MODIFY EXISTING CONTROLLER CABINET	EACH	1
X8710103	ETHERNET SWITCH	EACH	1
X1400076	COBALT CONTROLLER	EACH	1
X1400155	REMOVAL OF FIBER OPTIC CABLE	FOOT	124
X8710029	FIBER OPTIC CABLE 24 FIBERS, SINGLE MODE	FOOT	604

USER NAME = Timothy,Sharp	DESIGNED - _____	REVISED - _____
PLOT SCALE = 1,0000 ' / in.	DRAWN - _____	REVISED - _____
PLOT DATE = 3/27/2024	CHECKED - _____	REVISED - _____
	DATE - _____	REVISED - _____

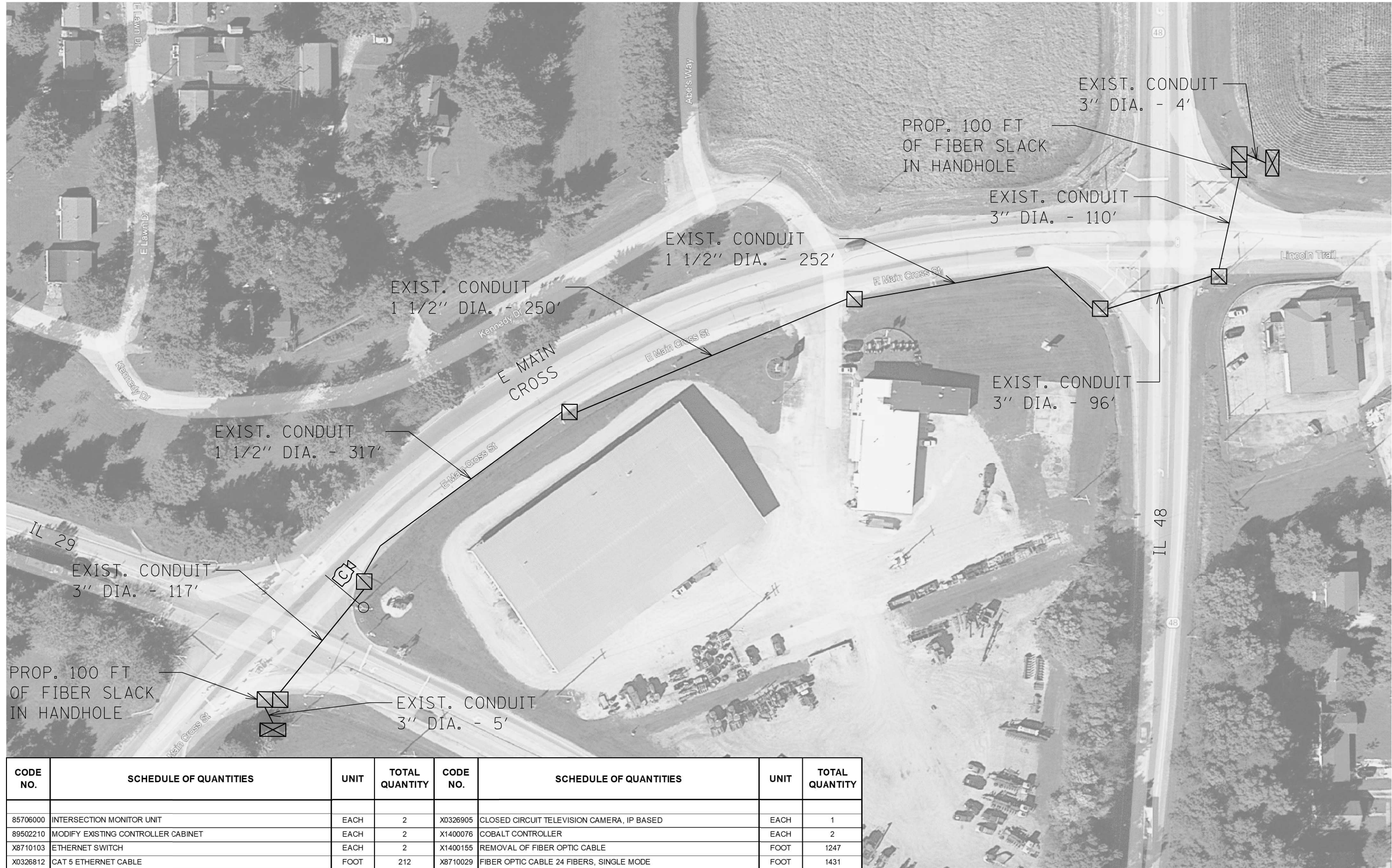
**STATE OF ILLINOIS  
DEPARTMENT OF TRANSPORTATION**

**TAYLORVILLE PLAN**

SCALE: \_\_\_\_\_ SHEET \_\_\_\_\_ OF \_\_\_\_\_ SHEETS STA. \_\_\_\_\_ TO STA. \_\_\_\_\_

F.A. RTE.	SECTION	COUNTY	TOTAL SHEETS	SHEET NO.
VAR	D6 ITS 2024-1	CHRISTIAN	40	29
CONTRACT NO. 72724			ILLINOIS FED. AID PROJECT	





CODE NO.	SCHEDULE OF QUANTITIES	UNIT	TOTAL QUANTITY	CODE NO.	SCHEDULE OF QUANTITIES	UNIT	TOTAL QUANTITY
85706000	INTERSECTION MONITOR UNIT	EACH	2	X0326905	CLOSED CIRCUIT TELEVISION CAMERA, IP BASED	EACH	1
89502210	MODIFY EXISTING CONTROLLER CABINET	EACH	2	X1400076	COBALT CONTROLLER	EACH	2
X8710103	ETHERNET SWITCH	EACH	2	X1400155	REMOVAL OF FIBER OPTIC CABLE	FOOT	1247
X0326812	CAT 5 ETHERNET CABLE	FOOT	212	X8710029	FIBER OPTIC CABLE 24 FIBERS, SINGLE MODE	FOOT	1431

MODEL: D:\p1\h\... FILE NAME: S:\CONTRACT\CA072724 - VARIOUS (VARIOUS) - TAYLORVILLE - PANA - ITS - CHRISTIAN CO. - (6-14-2023)\jplbans172724-its-its-7-30-fiber-4-its.dwg

USER NAME = Timothy,Sharp	DESIGNED - _____	REVISED - _____
DRAWN - _____	REVISOR - _____	REVISOR - _____
PLOT SCALE = 1,0000' / in.	CHECKED - _____	REVISOR - _____
PLOT DATE = 3/27/2024	DATE - _____	REVISOR - _____

**STATE OF ILLINOIS  
DEPARTMENT OF TRANSPORTATION**

**TAYLORVILLE PLAN**

SCALE: \_\_\_\_\_ SHEET \_\_\_\_\_ OF \_\_\_\_\_ SHEETS STA. \_\_\_\_\_ TO STA. \_\_\_\_\_

F.A. RTE.	SECTION	COUNTY	TOTAL SHEETS	SHEET NO.
VAR	D6 ITS 2024-1	CHRISTIAN	40	30
CONTRACT NO. 72724			ILLINOIS FED. AID PROJECT	



CODE NO.	SCHEDULE OF QUANTITIES	UNIT	TOTAL QUANTITY
X0326812	CAT 5 ETHERNET CABLE	FOOT	170
X0326905	CLOSED CIRCUIT TELEVISION DOME CAMERA, IP BASED	EACH	1
Z0010688	CAMERA MOUNTING ASSEMBLY	EACH	1

2nd & POPLAR

MODEL: P:\d6\h...  
 FILE NAME: S:\CONTRACTS\CA072734 - VARIOUS (VARIOUS) - TAYLORVILLE - PANA - ITS - CHRISTIAN CO - (6-14-2023)\plans\72734-its-cta-31-40-camera.dgn

USER NAME = Timothy.Sharp	DESIGNED -	REVISED -
	DRAWN -	REVISED -
PLOT SCALE = 1000.0000 ' / in.	CHECKED -	REVISED -
PLOT DATE = 3/27/2024	DATE -	REVISED -

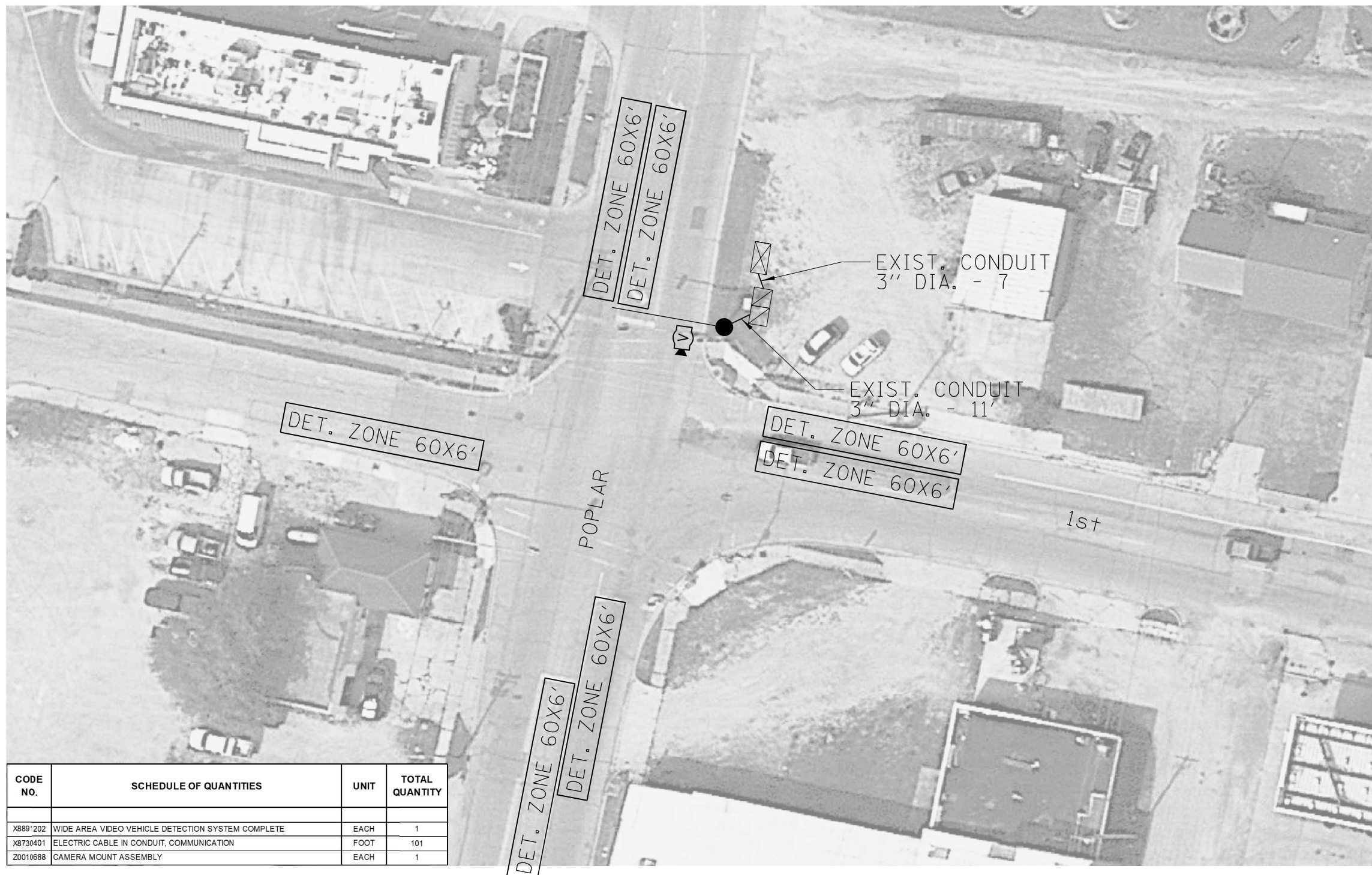
**STATE OF ILLINOIS  
DEPARTMENT OF TRANSPORTATION**

**PANA CAMERA**

SCALE: SHEET OF SHEETS STA. TO STA.

F.A. RTE.	SECTION	COUNTY	TOTAL SHEETS	SHEET NO.
	D6 ITS 2024-1	CHRISTIAN	40	31
			CONTRACT NO. 72734	
ILLINOIS FED. AID PROJECT				





CODE NO.	SCHEDULE OF QUANTITIES	UNIT	TOTAL QUANTITY
X889'202	WIDE AREA VIDEO VEHICLE DETECTION SYSTEM COMPLETE	EACH	1
X8730401	ELECTRIC CABLE IN CONDUIT, COMMUNICATION	FOOT	101
Z0010688	CAMERA MOUNT ASSEMBLY	EACH	1

1st & POPLAR

MODEL: P:\d6\h\... FILE NAME: S:\CONTRACTMAINT\_CAD\72734 - VARIOUS (VARIOUS) - TAYLORVILLE - PANA - ITS - CHRISTIAN CO. - (6-14-2023)\plbans72734-rts-rts-31-40-camera.dgn

USER NAME = Timothy,Sharp	DESIGNED -	REVISED -
PLOT SCALE = 1000,0000 ' / in.	DRAWN -	REVISED -
PLOT DATE = 3/27/2024	CHECKED -	REVISED -
	DATE -	REVISED -

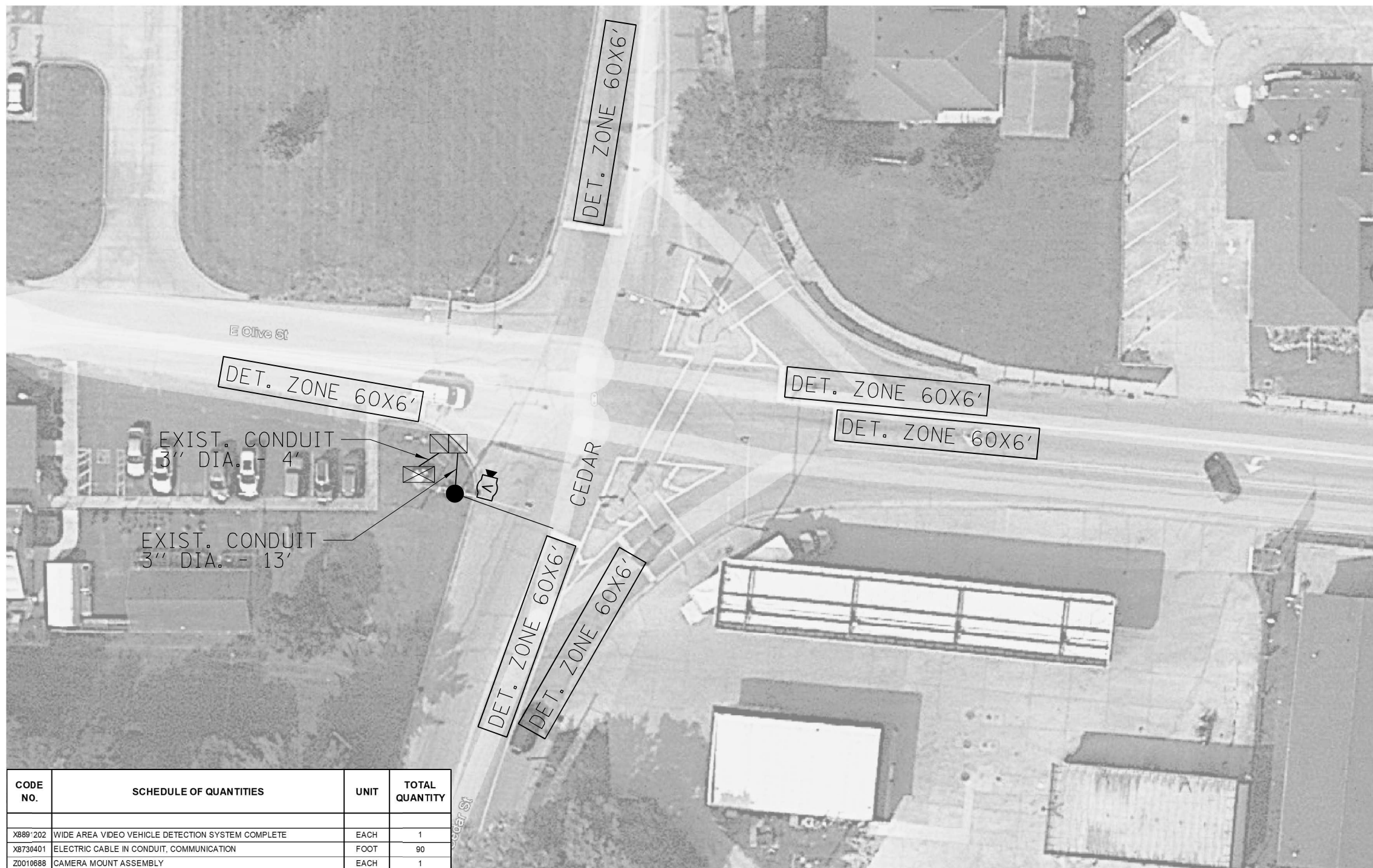
**STATE OF ILLINOIS  
DEPARTMENT OF TRANSPORTATION**

**PANA CAMERA**

SCALE: SHEET OF SHEETS STA. TO STA.

F.A. RTE.	SECTION	COUNTY	TOTAL SHEETS	SHEET NO.
	D6 ITS 2024-1	CHRISTIAN	40	32
			CONTRACT NO. 72734	
ILLINOIS FED. AID PROJECT				

MODEL PATH: S:\CONTRACTS\CAD\72734 - VARIOUS (VARIOUS) - TAYLORVILLE - PANA - ITS - CHRISTIAN CO. - (6-14-2023)\plans\72734-its-cta-31-40-camera.dgn



CODE NO.	SCHEDULE OF QUANTITIES	UNIT	TOTAL QUANTITY
X889'202	WIDE AREA VIDEO VEHICLE DETECTION SYSTEM COMPLETE	EACH	1
X8730401	ELECTRIC CABLE IN CONDUIT, COMMUNICATION	FOOT	90
Z0010688	CAMERA MOUNT ASSEMBLY	EACH	1

OLIVE & CEDAR

USER NAME = Timothy.Sharp	DESIGNED -	REVISED -
PLOT SCALE = 1000.0000 ' / in.	DRAWN -	REVISED -
PLOT DATE = 3/27/2024	CHECKED -	REVISED -
	DATE -	REVISED -

**STATE OF ILLINOIS  
DEPARTMENT OF TRANSPORTATION**

**PANA CAMERA**

SCALE: SHEET OF SHEETS STA. TO STA.

F.A. RTE.	SECTION	COUNTY	TOTAL SHEETS	SHEET NO.
	D6 ITS 2024-1	CHRISTIAN	40	33
			CONTRACT NO. 72734	
ILLINOIS FED. AID PROJECT				



ADVANCED DETECTION ZONES, 6X6', 330' FROM STOP BAR

EXIST. CONDUIT 3" DIA. - 99'

EXIST. CONDUIT 3" DIA. - 3'

EXIST. CONDUIT 3" DIA. - 79'

EXIST. CONDUIT 3" DIA. - 1544'

EXIST. CONDUIT 3" DIA. - 10'

EXIST. CONDUIT 3" DIA. - 43'

EXIST. CONDUIT 3" DIA. - 42'

EXIST. CONDUIT 3" DIA. - 47'

ADVANCED DETECTION ZONES, 6X6', 330' FROM STOP BAR

CODE NO.	SCHEDULE OF QUANTITIES	UNIT	TOTAL QUANTITY
X8730401	ELECTRIC CABLE IN CONDUIT, COMMUNICATION	FOOT	1130
Z0010688	CAMERA MOUNT ASSEMBLY	EACH	4
X8891001	VIDEO VEHICLE DETECTION SYSTEM	EACH	1

MODEL: D:\p\h\p\... FILE NAME: S:\CONTRACT\... VARIOUS (VARIOUS) - TAYLORVILLE - PANAMA - ITS - CHRISTIAN CO. - (6-14-2024)\p\h\p\...

USER NAME = Timothy,Sharp	DESIGNED -	REVISED -
	DRAWN -	REVISED -
PLOT SCALE = 1000.0000 ' / in.	CHECKED -	REVISED -
PLOT DATE = 3/27/2024	DATE -	REVISED -

**STATE OF ILLINOIS  
DEPARTMENT OF TRANSPORTATION**

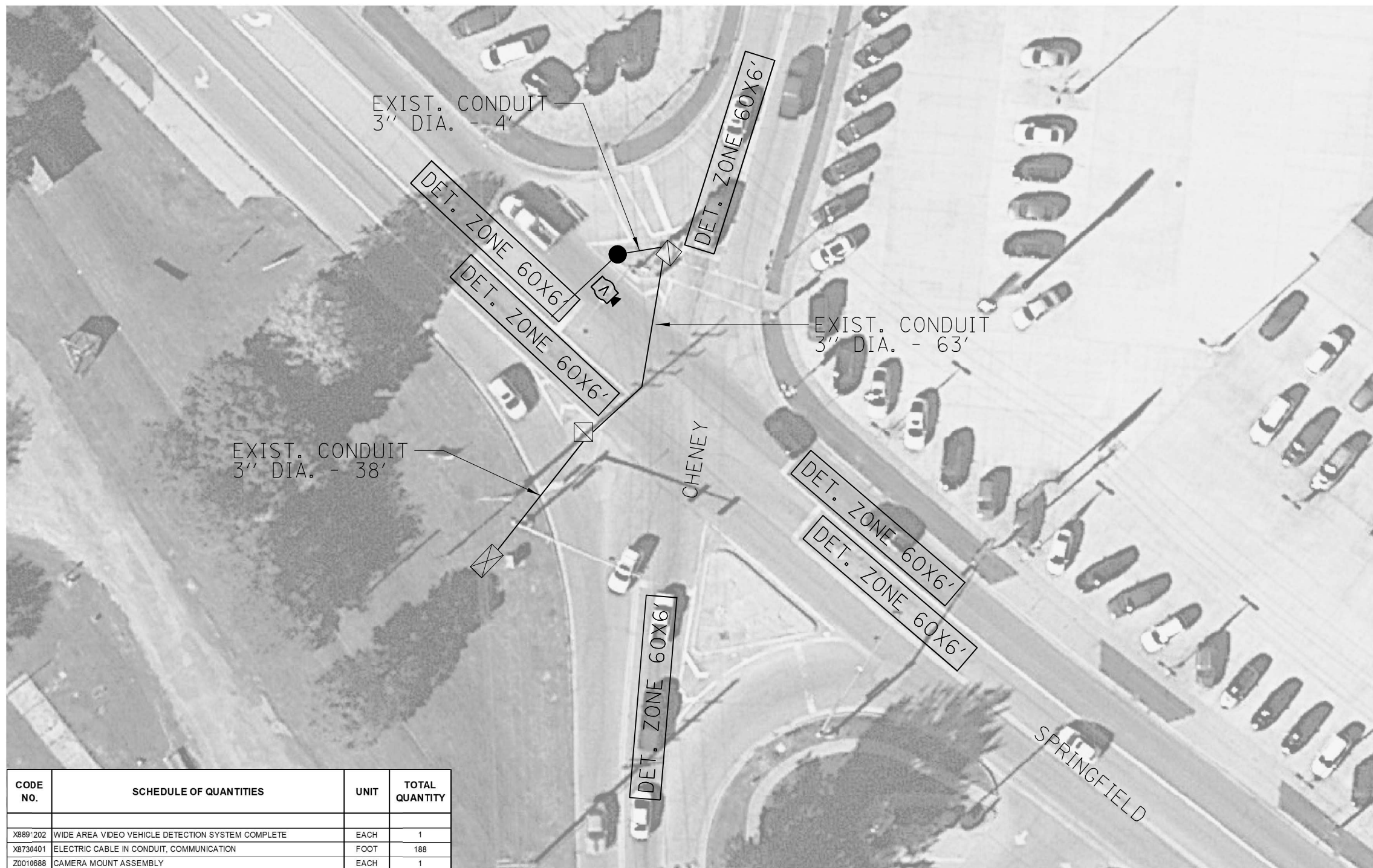
**TAYLORVILLE CAMERA**

SCALE: SHEET OF SHEETS STA. TO STA.

F.A. RTE.	SECTION	COUNTY	TOTAL SHEETS	SHEET NO.
	D6 ITS 2024-1	CHRISTIAN	40	34
			CONTRACT NO. 72734	
			ILLINOIS FED. AID PROJECT	







CODE NO.	SCHEDULE OF QUANTITIES	UNIT	TOTAL QUANTITY
X889'202	WIDE AREA VIDEO VEHICLE DETECTION SYSTEM COMPLETE	EACH	1
X8730401	ELECTRIC CABLE IN CONDUIT, COMMUNICATION	FOOT	188
Z0010688	CAMERA MOUNT ASSEMBLY	EACH	1

CHENEY & SPRINGFIELD

MODEL: P:\d6\p\FILE NAME: S:\CONTRACTMAINT CAD\72734 - VARIOUS (VARIOUS) - TAYLORVILLE - PANA - ITS - CHRISTIAN CO. - (6-14-2023)\plans\72734-its-rts-31-40-cameras.dgn

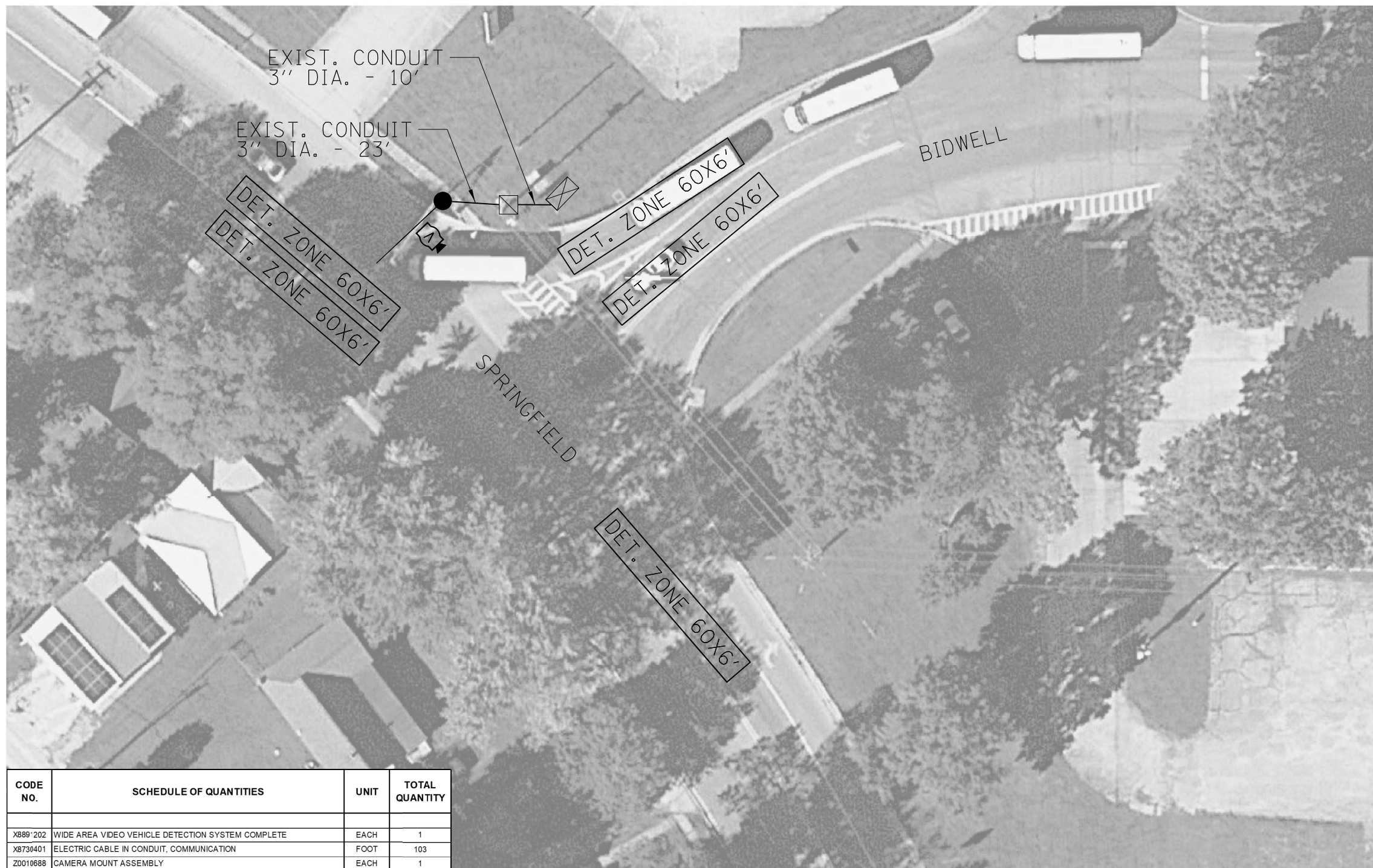
USER NAME = Timothy,Sharp	DESIGNED -	REVISED -
PLOT SCALE = 1000,0000 ' / in.	DRAWN -	REVISED -
PLOT DATE = 3/27/2024	CHECKED -	REVISED -
	DATE -	REVISED -

**STATE OF ILLINOIS  
DEPARTMENT OF TRANSPORTATION**

**PANA CAMERA**

SCALE: SHEET OF SHEETS STA. TO STA.

F.A. RTE.	SECTION	COUNTY	TOTAL SHEETS	SHEET NO.
	D6 ITS 2024-1	CHRISTIAN	40	36
CONTRACT NO. 72734			ILLINOIS FED. AID PROJECT	



CODE NO.	SCHEDULE OF QUANTITIES	UNIT	TOTAL QUANTITY
X889'202	WIDE AREA VIDEO VEHICLE DETECTION SYSTEM COMPLETE	EACH	1
X8730401	ELECTRIC CABLE IN CONDUIT, COMMUNICATION	FOOT	103
Z0010688	CAMERA MOUNT ASSEMBLY	EACH	1

BIDWELL & SPRINGFIELD

MODEL: P:\d6\h\p\FILE NAME: S:\CONTRACT\MAINT\_CAD\72734 - VARIOUS (VARIOUS) - TAYLORVILLE - PANA - ITS - CHRISTIAN CO. - (6-14-2023)\plans\72734-its-hb-31-40-camera.dgn

USER NAME = Timothy.Sharp	DESIGNED -	REVISED -
PLOT SCALE = 1000.0000 ' / in.	DRAWN -	REVISED -
PLOT DATE = 3/27/2024	CHECKED -	REVISED -
	DATE -	REVISED -

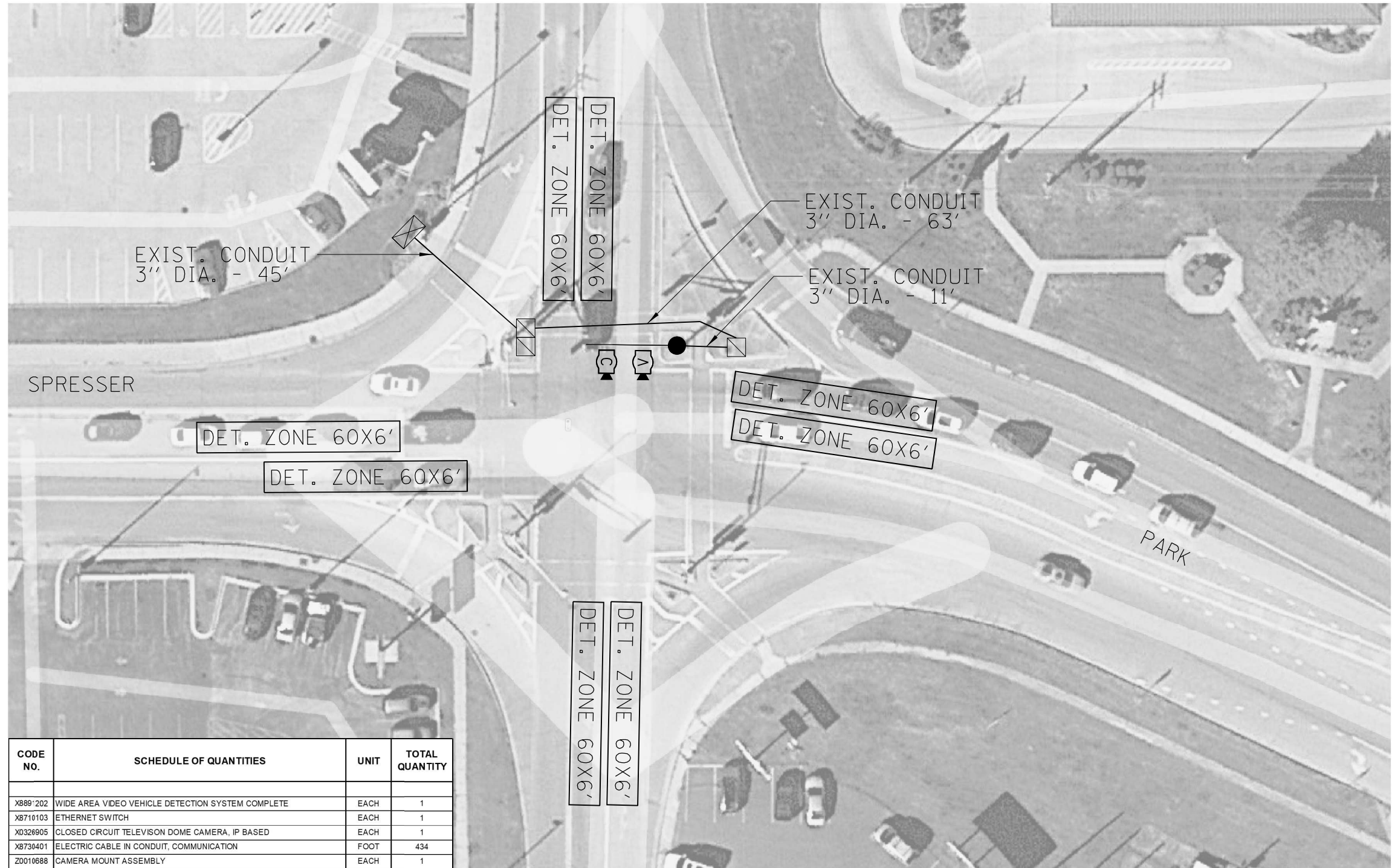
**STATE OF ILLINOIS**  
**DEPARTMENT OF TRANSPORTATION**

**TAYLORVILLE CAMERA**

SCALE: SHEET OF SHEETS STA. TO STA.

F.A. RTE.	SECTION	COUNTY	TOTAL SHEETS	SHEET NO.
	D6 ITS 2024-1	CHRISTIAN	40	37
			CONTRACT NO. 72734	
ILLINOIS FED. AID PROJECT				





CODE NO.	SCHEDULE OF QUANTITIES	UNIT	TOTAL QUANTITY
X889'202	WIDE AREA VIDEO VEHICLE DETECTION SYSTEM COMPLETE	EACH	1
X8710103	ETHERNET SWITCH	EACH	1
X0326905	CLOSED CIRCUIT TELEVISION DOME CAMERA, IP BASED	EACH	1
X8730401	ELECTRIC CABLE IN CONDUIT, COMMUNICATION	FOOT	434
Z0010688	CAMERA MOUNT ASSEMBLY	EACH	1

SPRESSER & PARK

MODEL: D:\p\h\p\...  
 FILE NAME: S:\CONTRACTS\...  
 TAYLORVILLE - PARKA - ITS - CHRISTIAN CO. - (6-14-2023)\p\h\p\...  
 TAYLORVILLE - PARKA - ITS - CHRISTIAN CO. - (6-14-2023)\p\h\p\...

USER NAME = Timothy,Sharp	DESIGNED -	REVISED -
PLOT SCALE = 1000,0000 ' / in.	DRAWN -	REVISIED -
PLOT DATE = 3/27/2024	CHECKED -	REVISIED -
	DATE -	REVISIED -

**STATE OF ILLINOIS  
DEPARTMENT OF TRANSPORTATION**

**TAYLORVILLE CAMERA**

SCALE: SHEET OF SHEETS STA. TO STA.

F.A. RTE.	SECTION	COUNTY	TOTAL SHEETS	SHEET NO.
	D6 ITS 2024-1	CHRISTIAN	40	38
ILLINOIS FED. AID PROJECT			CONTRACT NO. 72734	



CODE NO.	SCHEDULE OF QUANTITIES	UNIT	TOTAL QUANTITY
X889'202	WIDE AREA VIDEO VEHICLE DETECTION SYSTEM COMPLETE	EACH	1
X8730401	ELECTRIC CABLE IN CONDUIT, COMMUNICATION	FOOT	98
Z0010688	CAMERA MOUNT ASSEMBLY	EACH	1

PARK & WALNUT

MODEL: P:\d6\h\... FILE NAME: S:\CONTRACTS\... TAYLORVILLE - PANAMA - ITS - CHRISTIAN CO. - (6-14-2023)\plans\72734-d6-cameras.dgn

USER NAME = Timothy,Sharp	DESIGNED -	REVISED -
PLOT SCALE = 1000,0000 ' / in.	DRAWN -	REVISED -
PLOT DATE = 3/27/2024	CHECKED -	REVISED -
	DATE -	REVISED -

**STATE OF ILLINOIS  
DEPARTMENT OF TRANSPORTATION**

**TAYLORVILLE CAMERA**

SCALE: SHEET OF SHEETS STA. TO STA.

F.A. RTE.	SECTION	COUNTY	TOTAL SHEETS	SHEET NO.
VAR	D6 ITS 2024-1	CHRISTIAN	40	39
			CONTRACT NO. 72734	
ILLINOIS FED. AID PROJECT				



MODEL PATH: S:\CONTRACTS\CAD\72734 - VARIOUS (VARIOUS) - TAYLORVILLE - PANA - ITS - CHRISTIAN CO. - (6-14-2023)\plans\72734-its-hb-31-40-camera.dgn



CODE NO.	SCHEDULE OF QUANTITIES	UNIT	TOTAL QUANTITY
X889'202	WIDE AREA VIDEO VEHICLE DETECTION SYSTEM COMPLETE	EACH	1
X8730401	ELECTRIC CABLE IN CONDUIT, COMMUNICATION	FOOT	93
Z0010688	CAMERA MOUNT ASSEMBLY	EACH	1

PARK & CHEROKEE

USER NAME = Timothy,Sharp	DESIGNED -	REVISED -
	DRAWN -	REVISED -
PLOT SCALE = 1000.0000 ' / in.	CHECKED -	REVISED -
PLOT DATE = 3/27/2024	DATE -	REVISED -

**STATE OF ILLINOIS  
DEPARTMENT OF TRANSPORTATION**

**TAYLORVILLE CAMERA**

SCALE: SHEET OF SHEETS STA. TO STA.

F.A. RTE.	SECTION	COUNTY	TOTAL SHEETS	SHEET NO.
	D6 ITS 2024-1	CHRISTIAN	40	40
			CONTRACT NO. 72734	
ILLINOIS FED. AID PROJECT				