

STATE OF ILLINOIS
DEPARTMENT OF TRANSPORTATION

| F.A.S. RTE. | SECTION | COUNTY | TOTAL SHEETS | SHEET NO. |
|-------------|---------|-----------|--------------------|-----------|
| 2701 | 102 B | EFFINGHAM | 18 | 1 |
| | | ILLINOIS | CONTRACT NO. 74984 | |

INDEX OF SHEETS

- 1 COVER SHEET
- 2 GENERAL NOTES
- 3-5 SUMMARY OF QUANTITIES
- 6 TYPICAL SECTIONS
- 7 SCHEDULE OF QUANTITIES
- 8 ALIGNMENTS, TIES, AND BENCHMARKS
- 9 PLAN AND PROFILE
- 10-12 DETOUR PLAN
- 13-15 CULVERT DETAILS
- 16-18 CROSS SECTIONS

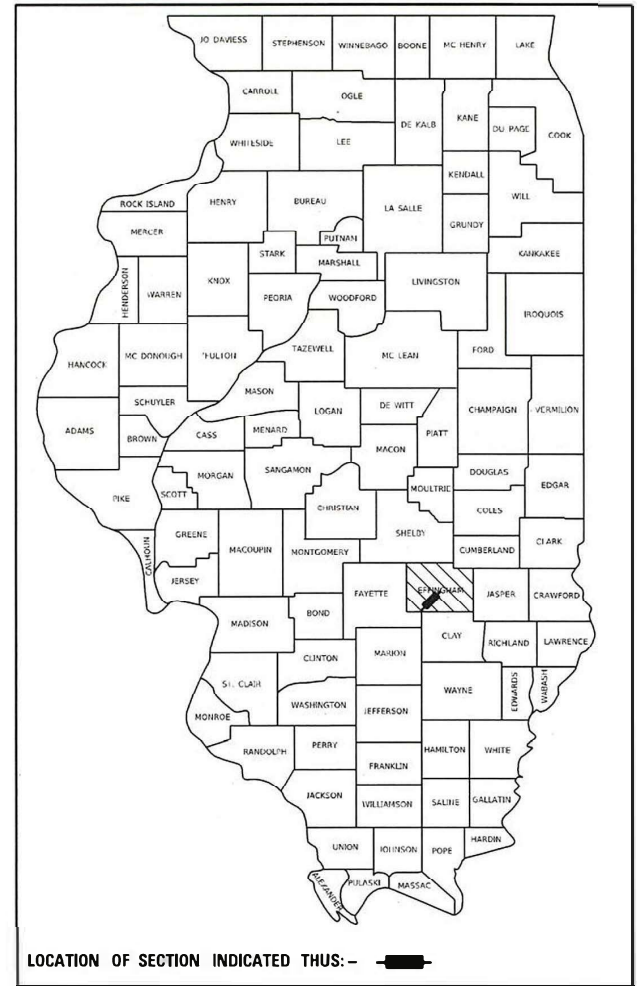
HIGHWAY STANDARDS

- 000001-08 STANDARD SYMBOLS, ABBREVIATIONS AND PATTERNS
- 001001-02 AREAS OF REINFORCEMENT BARS
- 001006 DECIMAL OF AN INCH AND OF A FOOT
- 280001-07 TEMPORARY EROSION CONTROL SYSTEMS
- 442201-03 CLASS C AND D PATCHES
- 515001-04 NAME PLATE FOR BRIDGES
- 630001-13 STEEL PLATE BEAM GUARDRAIL
- 630101-11 STRONG POST GUARDRAIL ATTACHED TO CULVERT
- 630301-09 SHOULDER WIDENING FOR TYPE 1 (SPECIAL) GUARDRAIL TERMINALS
- 701006-05 OFF-ROAD OPERATIONS, 2L, 2W, 15' TO 24" FROM PAVEMENT EDGE
- 701311-03 LANE CLOSURE, 2L, 2W, MOVING OPERATIONS - DAY ONLY
- 701901-09 TRAFFIC CONTROL DEVICES
- 780001-05 TYPICAL PAVEMENT MARKINGS
- 782006-01 GUARDRAIL AND BARRIER WALL REFLECTOR MOUNTING DETAILS
- B.L.R. 21-9 TYPICAL APPLICATION OF TRAFFIC CONTROL DEVICES FOR CONSTRUCTION ON RURAL LOCAL HIGHWAYS
- 725001-01 OBJECT AND TERMINAL MARKERS

PROPOSED
HIGHWAY PLANS

FAS ROUTE 2701 (ILL 37)
SECTION 102B
PROJECT HBFP-50TS(809)
CULVERT REPLACEMENT
EFFINGHAM COUNTY

C-97-067-20



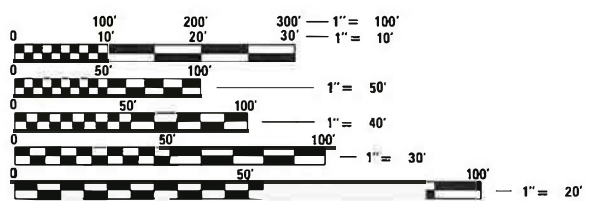
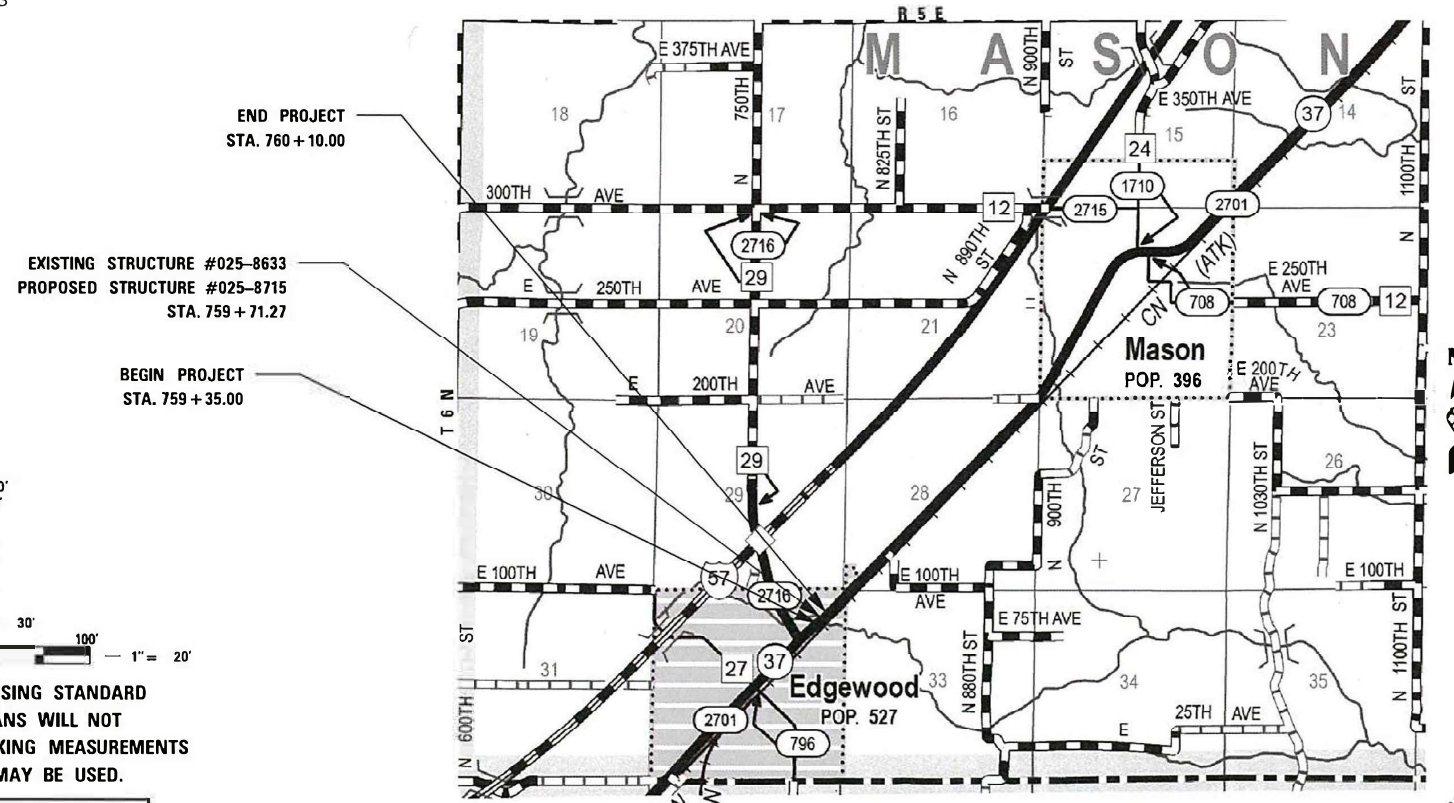
FUNCTIONAL CLASSIFICATION
MAJOR COLLECTOR
2023 ADT = 1350
P.V. = 90.0% TRUCKS = 10.0%

STATE OF ILLINOIS
DEPARTMENT OF TRANSPORTATION

SUBMITTED MARCH 26 2024
Jeffrey P. Myerles REGIONAL ENGINEER
May 10, 2024
[Signature]
ENGINEER OF DESIGN AND ENVIRONMENT
May 10, 2024
[Signature]
DIRECTOR OF HIGHWAYS PROJECT IMPLEMENTATION

PRINTED BY THE AUTHORITY
OF THE STATE OF ILLINOIS

REV. - MS



FULL SIZE PLANS HAVE BEEN PREPARED USING STANDARD ENGINEERING SCALES. REDUCED SIZED PLANS WILL NOT CONFORM TO STANDARD SCALES. IN MAKING MEASUREMENTS ON REDUCED PLANS, THE ABOVE SCALES MAY BE USED.

J.U.L.I.E.
JOINT UTILITY LOCATION INFORMATION FOR EXCAVATORS
1-800-892-0123
OR 811

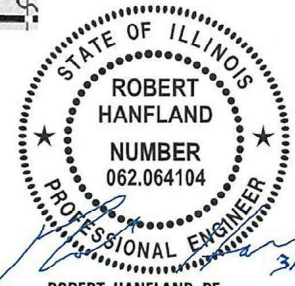
PROJECT ENGINEER: MATTHEW BOWER (217) 342-8359
PROJECT MANAGER: ROBERT HANFLAND (217) 340-0347

CONTRACT NO. 74984



LOCATION MAP
NOT TO SCALE

GROSS LENGTH = 75.00 FT. = 0.014 MILE
NET LENGTH = 75.00 FT. = 0.014 MILE



ROBERT HANFLAND, PE
STATE OF ILLINOIS NO. 062-064104
EXPIRES 11-30-2025

GENERAL NOTES

1. ALL CONSTRUCTION SHALL BE DONE IN ACCORDANCE WITH THE STATE OF ILLINOIS "STANDARD SPECIFICATIONS FOR ROAD AND BRIDGE CONSTRUCTION, ADOPTED JANUARY 1, 2022," THESE PLANS AND THE SPECIAL PROVISIONS INCLUDED IN THE CONTRACT DOCUMENTS.
2. THE ROAD SHALL BE CLOSED TO TRAFFIC AT ALL TIMES EXCEPT AS DISCUSSED IN THE SPECIAL PROVISIONS AND TRAFFIC CONTROL PLAN. THE CONTRACTOR SHALL PROVIDE ACCESS TO ABUTTING PROPERTY AT ALL TIMES DURING CONSTRUCTION OF THE PROJECT.
3. ALL EXCAVATED MATERIAL FROM THE PROJECT MAY BE USED IN THE PROPOSED EMBANKMENT AT THE APPROVAL OF THE ENGINEER.
4. THE AREA TO BE SEEDED SHALL CONSIST OF ALL DISTURBED EARTH SURFACES WITHIN THE RIGHT OF WAY AS DIRECTED BY THE ENGINEER. ESTIMATED QUANTITY: SEEDING, CLASS 2 (SPECIAL) = 0.25 ACRES
5. THE FOLLOWING RATES OF APPLICATION HAVE BEEN USED IN CALCULATING PLAN QUANTITIES:

| | |
|--|-----------------------------|
| STONE RIPRAP | 1.75 TON/CU.YD. |
| AGGREGATE SHOULDER | 1.60 TON/CU.YD. |
| BITUMINOUS MATERIALS (TACK COAT) | 0.05 LBS/ SQ FT (MILLING) |
| | 0.025 LBS/SQ FT (HMA LIFTS) |
| BITUMINOUS MATERIALS (PRIME COAT) ON AGG BASES | 0.25 LBS/SQ FT |
| HMA SURFACE MIX: | 0.056 LBS/SQ YD*IN |
6. THE REMOVAL AND REPLACEMENT OF THE PAVEMENT AND SHOULDERS OVER THE CULVERT WILL BE INCLUDED IN THE COST OF CLASS D PAVEMENT PATCHING.

THE FOLLOWING MIXTURE REQUIREMENTS ARE APPLICABLE TO THIS PROJECT:

| LOCATION(S) | MIXTURE USE(S) | PG | DESIGN AIR VOIDS | MIXTURE COMPOSITION | FRICTION AGGREGATE | MIXTURE WEIGHT | QUALITY MANAGEMENT PROGRAM | SUBLOT SIZE | MATERIAL TRANSFER DEVICE (REQUIRED?) |
|------------------|---|----------|------------------|---------------------|--------------------|----------------|----------------------------|-------------|--------------------------------------|
| MAINLINE | HMA SURFACE COURSE, 1L-9.5, MIX "C", N70 (1.5") | PG 64-22 | 4.0% @ N=70 | 1L - 9.5 | MIXTURE C | N70 | QC/QA | 3000 | N/A |
| CLASS D PATCHING | HMA BINDER COURSE, 1L-19.0, N70 | PG 64-22 | 4.0% @ N=70 | 1L - 19.0 | N/A | N70 | QC/QA | 3000 | N/A |

COMMITMENTS

TREES THREE (3) INCHES IN DIAMETER AT BREAST HEIGHT SHALL NOT BE CLEARED FROM APRIL 1ST THROUGH SEPTEMBER 30TH OF ANY GIVEN YEAR. PLEASE NOTE THAT ALL BAT BRIDGE ASSESSMENTS ARE VALID FOR 2 YEARS AND THAT EXPIRED ASSESSMENTS SHALL BE UPDATED PRIOR TO CONSTRUCTION.

A PORTION OF THE PRAIRIE EXISTS WITHIN THE PROPOSED PROJECT AREA. NO STAGING OR STOCKPILING, PARKING OF VEHICLES, OR STORAGE OF EQUIPMENT OR MATERIALS SHALL OCCUR AT LOCATIONS SHOWN ON THE PLANS. AVOID AND MINIMIZE DRIVING EQUIPMENT THROUGH LOCATION SHOWN TO THE EXTENT POSSIBLE. DISTURBED AREA SHALL BE RE-SEEDED WITH A NATIVE PLANT SEED MIX (IDOT CLASS 4 AND 5A) IN ACCORDANCE WITH SECTION 250 (SEEDING) OF IDOT'S STANDARD SPECIFICATIONS FOR ROAD AND BRIDGE CONSTRUCTION.

MODEL: D:\p\h\...
 FILE NAME: PLS\X\X\5\X\5\570 -- PTB_203-037.D1_VY_Kuhn_Trellis\Work_Order_4128-Trans\CAD\CADD_Sheets\0774984-sht-gennotes.dgn



| | | | |
|------------------------------|------------|-----------|--|
| USER NAME = rhanfland | DESIGNED - | REVISED - | |
| | DRAWN - | REVISED - | |
| PLOT SCALE = 100,0000' / in. | CHECKED - | REVISED - | |
| PLOT DATE = 3/17/2024 | DATE - | REVISED - | |

**STATE OF ILLINOIS
DEPARTMENT OF TRANSPORTATION**

GENERAL NOTES

SCALE: NO SCALE SHEET 1 OF 1 SHEETS STA. TO STA.

| F.A.S RTE. | SECTION | COUNTY | TOTAL SHEETS | SHEET NO. |
|---------------------------|---------|-----------|--------------|-----------|
| 2701 | 102 B | EFFINGHAM | 18 | 2 |
| CONTRACT NO. 74984 | | | | |
| ILLINOIS FED. AID PROJECT | | | | |

| CODE NO. | ITEM | UNIT | TOTAL QUANTITY | CONSTR. CODE | |
|----------|--|-------|----------------|------------------------|-------------|
| | | | | 80%FED/20% STATE RURAL | BOX CULVERT |
| | | | | 0004 | 025-8715 |
| 20200100 | EARTH EXCAVATION | CU YD | 422 | | 422 |
| 20700110 | POROUS GRANULAR EMBANKMENT | CU YD | 350 | | 350 |
| 25000322 | SEEDING, CLASS 5A | ACRE | 0.25 | | 0.25 |
| 28000250 | TEMPORARY EROSION CONTROL SEEDING | POUND | 50 | | 50 |
| 28000305 | TEMPORARY DITCH CHECKS | FOOT | 5 | | 5 |
| 28000400 | PERIMETER EROSION BARRIER | FOOT | 186 | | 186 |
| 28100109 | STONE RIPRAP, CLASS A5 | SQ YD | 72 | | 72 |
| 28200200 | FILTER FABRIC | SQ YD | 72 | | 72 |
| 31101200 | SUBBASE GRANULAR MATERIAL, TYPE B 4" | SQ YD | 242 | | 242 |
| 40600275 | BITUMINOUS MATERIALS (PRIME COAT) | POUND | 102 | | 102 |
| 40600290 | BITUMINOUS MATERIALS (TACK COAT) | POUND | 51 | | 51 |
| 40604052 | HOT-MIX ASPHALT SURFACE COURSE, 1L-9.5, MIX "C", N70 | TON | 19 | | 19 |
| 44201771 | CLASS D PATCHES, TYPE IV, 10 INCH | SQ YD | 225 | | 225 |

* SPECIALTY ITEMS

REV. - MS

MODEL: C:\p\it... FILE NAME: P:\S\X\AS\X\55X\5570 - PTB 203-037.D1 VV Kuhn TrellebWork Order 412B-TransCAD\CAD\CADD Sheets\0774984-1-1-500.dgn



| | | |
|------------------------------|------------|-----------|
| USER NAME = rhanfland | DESIGNED - | REVISED - |
| | DRAWN - | REVISED - |
| PLOT SCALE = 100.0000' / in. | CHECKED - | REVISED - |
| PLOT DATE = 3/18/2024 | DATE - | REVISED - |

**STATE OF ILLINOIS
DEPARTMENT OF TRANSPORTATION**

| SUMMARY OF QUANTITIES | | | |
|-----------------------|---------|------|--------------|
| SCALE: | SHEET 1 | OF 3 | SHEETS |
| | | | STA. TO STA. |

| F.A.S RTE. | SECTION | COUNTY | TOTAL SHEETS | SHEET NO. |
|---------------------------|---------|-----------|--------------|--------------------|
| 2701 | 102 B | EFFINGHAM | 18 | 3 |
| | | | | CONTRACT NO. 74984 |
| ILLINOIS FED. AID PROJECT | | | | |

| |
|---------------------------|
| CONSTR. CODE |
| 80%FED/20% STATE RURAL |
| BOX CULVERT |
| 0004 |
| 025-8715 |

| CODE NO. | ITEM | UNIT | TOTAL QUANTITY | |
|------------|--|--------|----------------|--------|
| 48101200 | AGGREGATE SHOULDERS, TYPE B | TON | 14 | 14 |
| 50100300 | REMOVAL OF EXISTING STRUCTURES NO. 1 | EACH | 1 | 1 |
| 50200450 | REMOVAL AND DISPOSAL OF UNSUITABLE MATERIAL FOR STRUCTURES | CU YD | 55 | 55 |
| 50800105 | REINFORCEMENT BARS | POUND | 23,070 | 23,070 |
| 50800205 | REINFORCEMENT BARS, EPOXY COATED | POUND | 2,050 | 2,050 |
| 51500100 | NAME PLATES | EACH | 1 | 1 |
| 54003000 | CONCRETE BOX CULVERTS | CU YD | 105.8 | 105.8 |
| 59100100 | GEOCOMPOSITE WALL DRAIN | SQ YD | 91 | 91 |
| * 63000001 | STEEL PLATE BEAM GUARDRAIL, TYPE A, 6 FOOT POSTS | FOOT | 150 | 150 |
| * 63000007 | STEEL PLATE BEAM GUARDRAIL, TYPE B, 6 FOOT POSTS | FOOT | 50 | 50 |
| * 63000030 | STRONG POST GUARDRAIL ATTACHED TO CULVERT | FOOT | 50 | 50 |
| * 63100167 | TRAFFIC BARRIER TERMINAL, TYPE 1 (SPECIAL) TANGENT | EACH | 2 | 2 |
| 67000400 | ENGINEER'S FIELD OFFICE, TYPE A | CAL MO | 3 | 3 |
| 67100100 | MOBILIZATION | L SUM | 1 | 1 |

*
*
*
*
*

* SPECIALTY ITEMS

REV. - MS

MODEL: C:\p1\it... FILE NAME: P155XXX54XX-55XX15570 - PTB 203-037.D1 VV Kuhn, Trellis\Work_Order_4128-Trans\CAD\CADD_Sheets\1774984-1-1-500.dgn



| | | |
|------------------------------|------------|-----------|
| USER NAME = rhanfland | DESIGNED - | REVISED - |
| | DRAWN - | REVISED - |
| PLOT SCALE = 100.0000' / in. | CHECKED - | REVISED - |
| PLOT DATE = 3/17/2024 | DATE - | REVISED - |

**STATE OF ILLINOIS
DEPARTMENT OF TRANSPORTATION**

| SUMMARY OF QUANTITIES | | | |
|-----------------------|---------|------|---------------------|
| SCALE: | SHEET 2 | OF 3 | SHEETS STA. TO STA. |

| | | | | |
|------------|---------|---------------------------|--------------------|-----------|
| F.A.S RTE. | SECTION | COUNTY | TOTAL SHEETS | SHEET NO. |
| 2701 | 102 B | EFFINGHAM | 18 | 4 |
| | | | CONTRACT NO. 74984 | |
| | | ILLINOIS FED. AID PROJECT | | |

| CODE NO. | ITEM | UNIT | TOTAL QUANTITY | CONSTR. CODE | |
|-------------------|---|--------|----------------|------------------------|-------------|
| | | | | 80%FED/20% STATE RURAL | BOX CULVERT |
| | | | | 0004 | 025-8715 |
| 70107025 | CHANGEABLE MESSAGE SIGN | CAL DA | 28 | | 28 |
| * 72400100 | REMOVE SIGN PANEL ASSEMBLY - TYPE A | EACH | 2 | | 2 |
| * 72501000 | TERMINAL MARKER - DIRECT APPLIED | EACH | 2 | | 2 |
| * 78001110 | PAINT PAVEMENT MARKING - LINE 4" | FOOT | 170 | | 170 |
| 78200005 | GUARDRAIL REFLECTORS, TYPE A | EACH | 8 | | 8 |
| X5021508 | DEWATERING STRUCTURE NO. 1 | EACH | 1 | | 1 |
| X5810103 | MEMBRANE WATERPROOFING SYSTEM FOR BURIED STRUCTURES | SQ YD | 91 | | 91 |
| X2501000 | SEEDING, CLASS 2 (SPECIAL) | ACRE | 0.25 | | 0.25 |
| X2501750 | SEEDING, CLASS 4 (SPECIAL) | ACRE | 0.25 | | 0.25 |
| * X6330725 | STEEL PLATE BEAM GUARDRAIL (SHORT RADIUS) | FOOT | 50 | | 50 |
| X7011800 | TRAFFIC CONTROL AND PROTECTION, STANDARD BLR 21 | L SUM | 1 | | 1 |
| Z0016702 | DETOUR SIGNING | L SUM | 1 | | 1 |
| * Z0054406 | ROCK FILL - FOUNDATION | CU YD | 113 | | 113 |
| * SPECIALTY ITEMS | | | | | |

MODEL: D:\ef\it...
 FILE NAME: PLS\XAS\XAS\55X\5570 - PTB_203-037.D1_VV_Kuhn_Trellis\Work_Order_4102-Trans\CAD\CADD_Sheets\0774984-1-1-500.dgn

REV. - MS

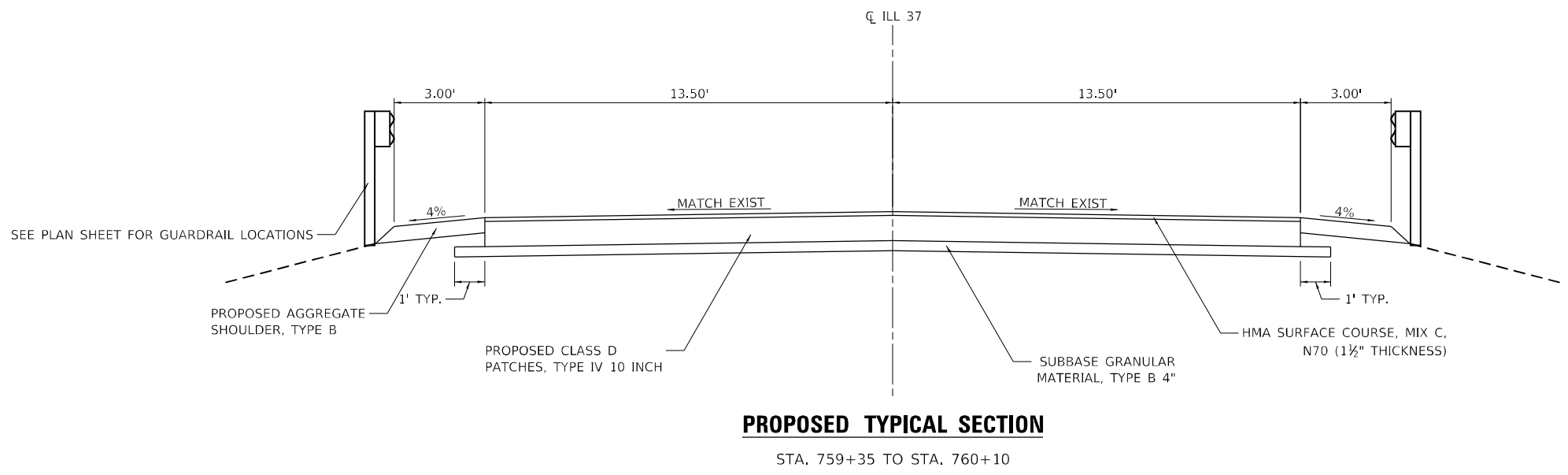
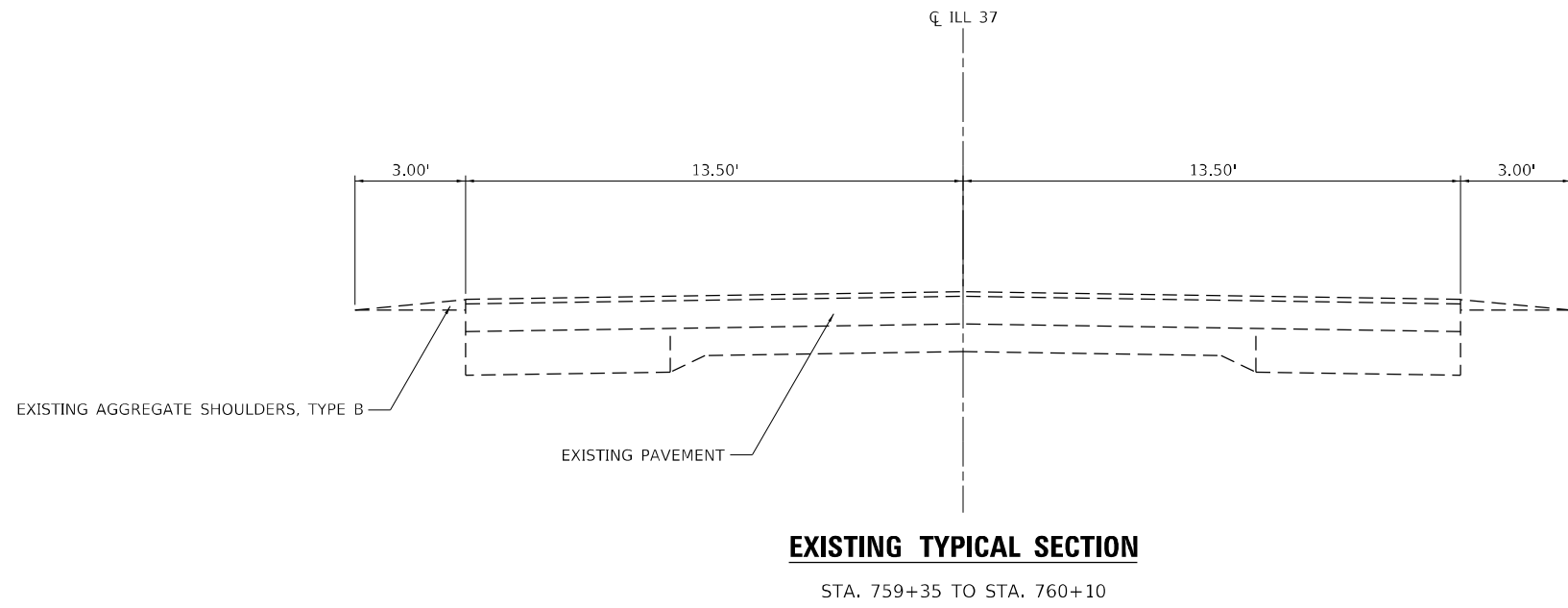


| | | |
|------------------------------|------------|-----------|
| USER NAME = rhanfland | DESIGNED - | REVISED - |
| | DRAWN - | REVISED - |
| PLOT SCALE = 100.0000' / in. | CHECKED - | REVISED - |
| PLOT DATE = 3/17/2024 | DATE - | REVISED - |

**STATE OF ILLINOIS
DEPARTMENT OF TRANSPORTATION**

| SUMMARY OF QUANTITIES | | | |
|-----------------------|---------------------|------|---------|
| SCALE: | SHEET 3 OF 3 SHEETS | STA. | TO STA. |

| F.A.S. RTE. | SECTION | COUNTY | TOTAL SHEETS | SHEET NO. |
|-------------|---------|---------------------------|--------------------|-----------|
| 2701 | 102 B | EFFINGHAM | 18 | 5 |
| | | | CONTRACT NO. 74984 | |
| | | ILLINOIS FED. AID PROJECT | | |



MODEL: Default
 FILE NAME: P:\S\X\X\5\X\5\570 - PTB_203-037.D1_VY_Kuhn_Trellis\Work_Order_4128-Trans\CAD\CADD_Sheets\1774984-shc-Typical.dgn



| | | |
|----------------------------|------------|-----------|
| USER NAME = rhanfland | DESIGNED - | REVISED - |
| DRAWN - | REVISED - | |
| PLOT SCALE = 5.0000' / in. | CHECKED - | REVISED - |
| PLOT DATE = 3/17/2024 | DATE - | REVISED - |

STATE OF ILLINOIS
DEPARTMENT OF TRANSPORTATION

TYPICAL SECTIONS

SCALE: SHEET 1 OF 1 SHEETS STA. TO STA.

| F.A.S. RTE. | SECTION | COUNTY | TOTAL SHEETS | SHEET NO. |
|---------------------------|---------|-----------|--------------|-----------|
| 2701 | 102 B | EFFINGHAM | 18 | 6 |
| CONTRACT NO. 74984 | | | | |
| ILLINOIS FED. AID PROJECT | | | | |

RESURFACING SCHEDULE

| LOCATION | | 31101200 | 40600275 | 40600290 | 40604052 | 44201771 |
|--------------------------|-------|-------------------------------------|-----------------------------------|----------------------------------|---|----------------------------------|
| | | SUBBASE GRANULAR MATERIAL TYPE B 4" | BITUMINOUS MATERIALS (PRIME COAT) | BITUMINOUS MATERIALS (TACK COAT) | HOT-MIX ASPHALT SURFACE COURSE IL-9.5, MIX "C", N70 | CLASS D PATCHES TYPE IV, 10 INCH |
| IL-37 | SIDE | SQ YD | POUND | POUND | TON | SQ YD |
| STATION 759+35 TO 760+10 | LT+RT | 241.7 | 102 | 50.6 | 18.9 | 225 |
| TOTAL | | 242 | 102 | 51 | 19 | 225 |

SHOULDERS

| LOCATION | | 48101200 |
|--------------------------|-------|----------------------------|
| | | AGGREGATE SHOULDERS TYPE B |
| IL-37 | SIDE | TON |
| STATION 759+35 TO 760+10 | LT+RT | 13.4 |
| TOTAL | | 14 |

STONE RIPRAP

| LOCATION | | 28100109 | 28200200 |
|--------------------------|-------|-----------------------|---------------|
| | | STONE RIPRAP CLASS A5 | FILTER FABRIC |
| IL-37 | SIDE | SQ YD | SQ YD |
| STATION 759+35 TO 760+10 | LT+RT | 71.8 | 71.8 |
| TOTAL | | 72 | 72 |

PAVEMENT MARKING SCHEDULE

| LOCATION | | 78001110 | |
|--------------------------|-------|--------------------------------|-----------|
| | | PAINT PAVEMENT MARKING LINE 4" | |
| | | SOLID | SKIP DASH |
| | | EDGE LINE | LANE LINE |
| | | WHITE | YELLOW |
| IL-37 | SIDE | FOOT | |
| STATION 759+35 TO 760+10 | LT+RT | 150 | 20 |
| TOTAL | | 170 | |

SEEDING SCHEDULE

| LOCATION | X2501000 | 28000250 |
|----------------------|----------------------------|-----------------------------------|
| | SEEDING, CLASS 2 (SPECIAL) | TEMPORARY EROSION CONTROL SEEDING |
| | ACRE | POUND |
| STA 759+35 TO 760+67 | 0.1 | 50 |
| Total | 0.1 | 50 |
| Use | 0.25 | 50 |

GUARDRAIL SCHEDULE

| LOCATION | | 63000001 | 63000007 | 63000030 | 63100167 | X6330725 |
|------------------------------|------|--|--|---|--|---|
| | | STEEL PLATE BEAM GUARDRAIL, TYPE A, 6 FOOT POSTS | STEEL PLATE BEAM GUARDRAIL, TYPE B, 6 FOOT POSTS | STRONG POST GUARDRAIL ATTACHED TO CULVERT | TRAFFIC BARRIER TERMINAL, TYPE 1 (SPECIAL) TANGENT | STEEL PLATE BEAM GUARDRAIL (SHORT RADIUS) |
| IL-37 | SIDE | FOOT | FOOT | FOOT | EACH | FOOT |
| STATION 758+96.1 TO 759+11.3 | LT | | | | | 25 |
| STATION 759+11.3 TO 759+36.3 | LT | 25 | | | | |
| STATION 759+36.3 TO 759+48.8 | LT | | 12.5 | | | |
| STATION 759+48.8 TO 759+73.8 | LT | | | 25 | | |
| STATION 759+73.8 TO 759+86.3 | LT | | 12.5 | | | |
| STATION 759+86.3 TO 760+11.3 | LT | 12.5 | | | | |
| STATION 760+11.3 TO 760+18.0 | LT | | | | | 25 |
| STATION 758+54.7 TO 759+54.7 | RT | 100 | | | 1 | |
| STATION 759+54.7 TO 759+67.2 | RT | | 12.5 | | | |
| STATION 759+67.2 TO 759+92.2 | RT | | | 25 | | |
| STATION 759+92.2 TO 760+04.7 | RT | | 12.5 | | | |
| STATION 760+04.7 TO 760+17.2 | RT | 12.5 | | | 1 | |
| TOTAL | | 150 | 50 | 50 | 2 | 50 |
| USE | | 150 | 50 | 50 | 2 | |

EARTHWORK SCHEDULE

| LOCATION | 20200100 | | ESTIMATE SUITABLE MATERIAL ADJUSTED FOR SHRINKAGE | EMBANKMENT | EARTHWORK BALANCE WASTE (+) OR SHORTAGE (-) | | |
|----------------------|------------------|-------|---|------------|---|-------|-------|
| | EARTH EXCAVATION | CU YD | | | | CU YD | CU YD |
| | | | | | | | |
| STA 759+35 TO 760+10 | 422 | 317 | 64 | 253 | | | |
| TOTAL | 422 | 317 | 64 | 253 | | | |

COLUMN 1 & 3 - LOCATION AND QUANTITIES FROM CROSS SECTIONS.
 CUT = EARTH EXCAVATION FILL = EMBANKMENT
 COLUMN 2 - EXCAVATION ADJUSTED FOR SHRINKAGE (75%)
 COLUMN 4 - EARTHWORK BALANCE
 (-) = QUANTITY OF FURNISHED EXCAVATION NEEDED EARTHWORK BALANCE
 (+) = QUANTITY OF EARTH EXCAVATION ADJUSTED FOR SHRINKAGE TO BE WASTED

REV. - MS

MODEL: Default FILE NAME: P:\55X\55X\55X\5570 - PTB_203-037.DT_VV_Kuhn_TrellisWork_Order_412B-TrafficCAD\CADD_Sheets\1774984-sh-Schedule.dgn



USER NAME = rhanfland
 DESIGNED -
 DRAWN -
 PLOT SCALE = 100.0000' / in.
 CHECKED -
 PLOT DATE = 3/17/2024
 DATE -

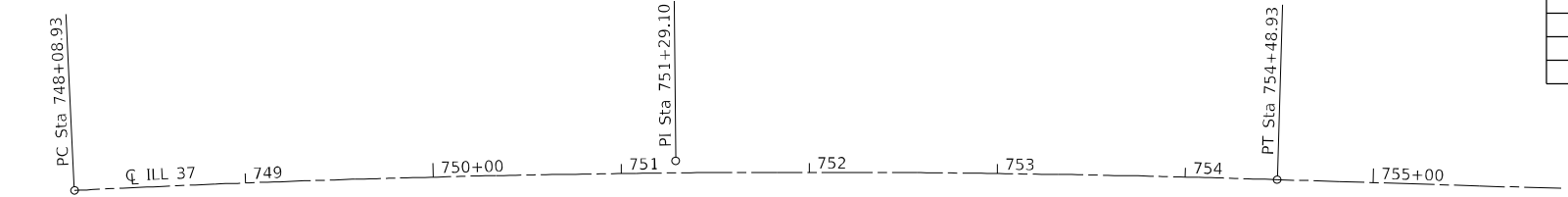
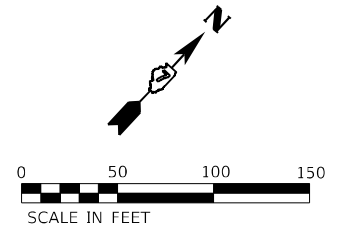
REVISED -
 REVISED -
 REVISED -
 REVISED -

STATE OF ILLINOIS
 DEPARTMENT OF TRANSPORTATION

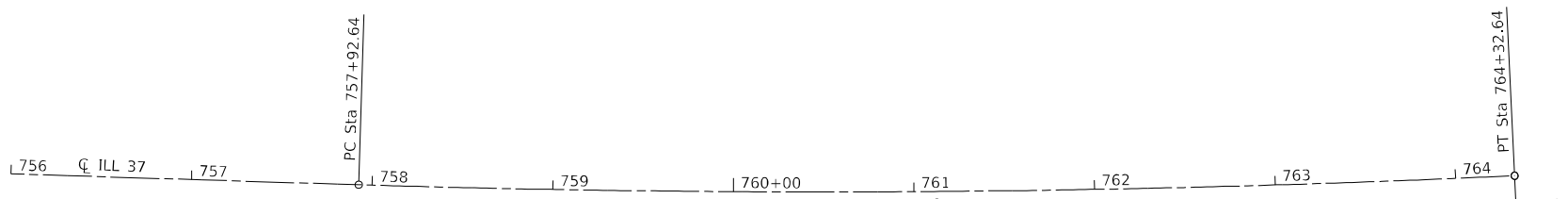
SCHEDULE OF QUANTITIES
 SCALE: SHEET 1 OF 1 SHEETS STA. TO STA.

| F.A.S. RTE. | SECTION | COUNTY | TOTAL SHEETS | SHEET NO. |
|---------------------------|---------|-----------|--------------|-----------|
| 2701 | 102 B | EFFINGHAM | 18 | 7 |
| CONTRACT NO. 74984 | | | | |
| ILLINOIS FED. AID PROJECT | | | | |

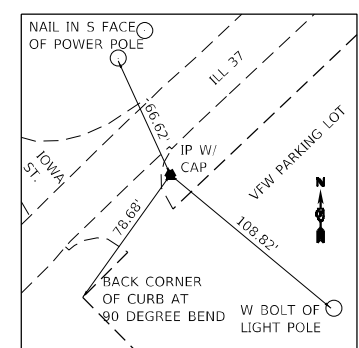
| CENTERLINE OF IL37 | | | | |
|--------------------|--------|-------------|-------------|-------------|
| STATION | OFFSET | NORTHING | EASTING | DESCRIPTION |
| 748+08.93 | 0.00 | 822555.7636 | 891421.2927 | PC |
| 751+29.10 | 6.41 | 822785.9464 | 891643.8356 | PI |
| 754+48.93 | 0.00 | 822997.5979 | 891884.0711 | PT |
| 757+92.64 | 0.00 | 823224.8063 | 892141.9645 | PC |
| 761+12.80 | 6.22 | 823436.4512 | 892382.1925 | PI |
| 764+32.64 | 0.00 | 823666.0960 | 892605.2761 | PT |



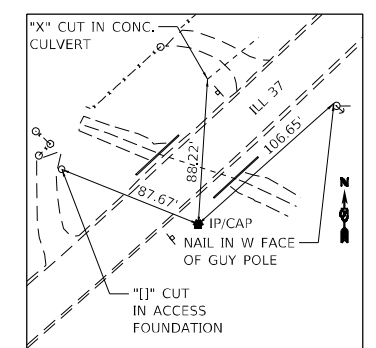
EXIST. CURVE 37CLSURVEY_1
 PI STA. = 751+29.10
 $\Delta = 4^\circ 35' 10''$ (RT)
 $D = 0^\circ 43' 00''$
 $R = 7,995.55'$
 $T = 320.17'$
 $L = 640.00'$
 $E = 6.41'$
 $e = \text{---}$
 $T.R. = \text{---}$
 $S.E. RUN = \text{---}$
 P.C. STA. = 748+08.93
 P.T. STA. = 754+48.93



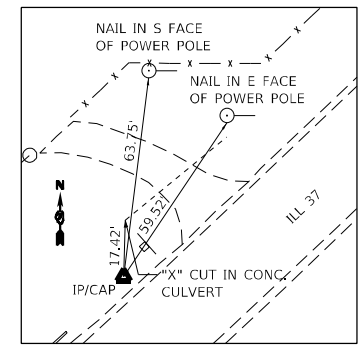
EXIST. CURVE 37CLSURVEY_4
 PI STA. = 761+12.80
 $\Delta = 4^\circ 26' 59''$ (LT)
 $D = 0^\circ 41' 43''$
 $R = 8,240.84'$
 $T = 320.16'$
 $L = 640.00'$
 $E = 6.22'$
 $e = \text{---}$
 $T.R. = \text{---}$
 $S.E. RUN = \text{---}$
 P.C. STA. = 757+92.64
 P.T. STA. = 764+32.64



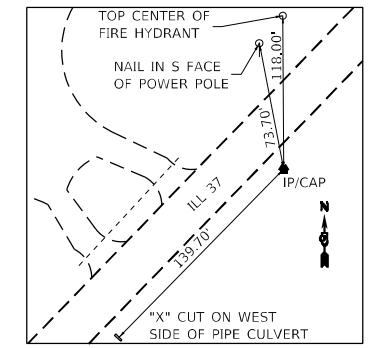
TP 500
STA. 751 + 56.87, 21.39' RT
 N 822785.0430
 E 891683.2200
 ELEV. 566.502



TP 501
STA. 759 + 49.22, 26.94' RT
 N 823309.5560
 E 892276.6530
 ELEV. 551.041



TP 502
STA. 760 + 00.14, 20.44' LT.
 N 823378.8920
 E 892281.9960
 ELEV. 550.289



TP 503
STA. 771 + 35.26, 19.15' RT
 N 824022.2440
 E 892977.8360
 ELEV. 570.529

BM#112- RR SPIKE IN N FACE OF POWER POLE ON W SIDE OF ILL 37
 CL STATION 758+67.00
 O/S 39.2' LT OF ILL 37 CL
 ELEV. 550.674

BM#111- CUT SQUARE ON E SIDE OF CONC. FOUNDATION FOR SEWER PUMP STATION ACCESS
 CL STATION 759+11.00
 O/S 49.4' LT OF ILL 37 CL
 ELEV. 548.494

MODEL: D:\p\h\...
 FILE NAME: PLSXXX54XX-55XX15570 - PTB-203-037.D1_VY_Kuhn_Trellis\Work_Order_4128-TransCAD\CADD_Sheets\1774984-shr-ctb.dgn



| | | |
|------------------------------|------------|-----------|
| USER NAME = rhanfland | DESIGNED - | REVISED - |
| PLOT SCALE = 100.0000' / in. | DRAWN - | REVISED - |
| PLOT DATE = 3/17/2024 | CHECKED - | REVISED - |
| | DATE - | REVISED - |

STATE OF ILLINOIS
DEPARTMENT OF TRANSPORTATION

ALIGNMENT, TIES, AND BENCHMARKS

SCALE: 1"=50' SHEET 1 OF 1 SHEETS STA. 748+08.93 TO STA. 766+20.20

| F.A.S. RTE. | SECTION | COUNTY | TOTAL SHEETS | SHEET NO. |
|---------------------------|---------|-----------|--------------|-----------|
| 2701 | 102 B | EFFINGHAM | 18 | 8 |
| CONTRACT NO. 74984 | | | | |
| ILLINOIS FED. AID PROJECT | | | | |

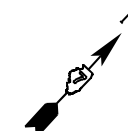
LYNDON K KAISER
 LOT 4 NE NE & PT LOT 2 NE NE 1656/250 1150/197 1089/334

JACOB DURHAM
 PT LOT 2 NE NE

STEEL PLATE BEAM GUARDRAIL (SHORT RADIUS) -25'
 STEEL PLATE BEAM GUARDRAIL TYPE A - 25'
 STEEL PLATE BEAM GUARDRAIL TYPE B - 12.5'
 STRONG POST ATTACHED TO CULVERT - 25'
 STEEL PLATE BEAM GUARDRAIL TYPE B - 12.5'
 STEEL PLATE BEAM GUARDRAIL TYPE A - 12.5'
 STEEL PLATE BEAM GUARDRAIL (SHORT RADIUS) -25'

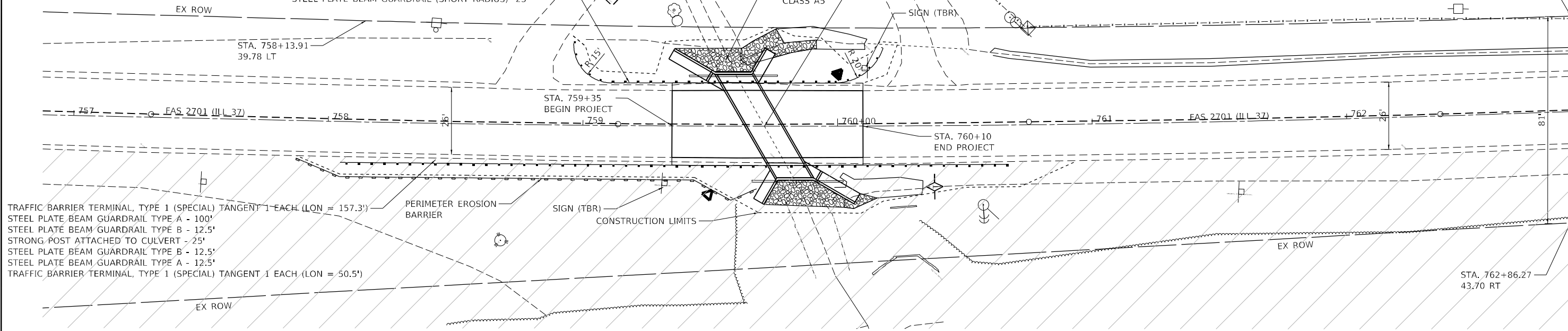
PR SN 025-8715
 C STA. 759+71.3, 30° SKEW (RT-AH)
 12' X 8' BOX CULVERT (49' LENGTH)
 CAST-IN-PLACE, SINGLE-CELL
 USFL INV. 541.5, DSFL INV. 541.2

DONALD E BANNING
 CATHY A BANNING
 Lot 1 NE NE 867/2



STA. 762+89.39
 37.47 LT

| | | |
|-----------|-------------------|------|
| PLAN | REVIEWED | DATE |
| | PLOTTED | |
| NOTE BOOK | ALIGNMENT CHECKED | |
| | CADD FILE NAME | |



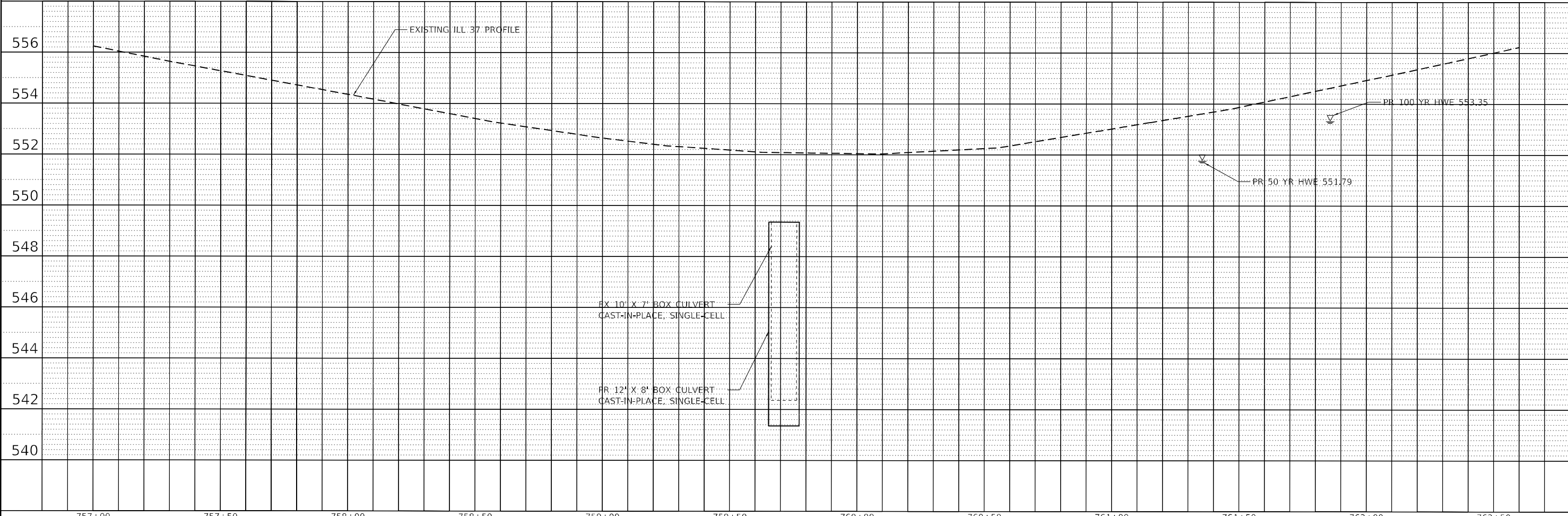
TRAFFIC BARRIER TERMINAL, TYPE 1 (SPECIAL) TANGENT 1 EACH (LON = 157.3')
 STEEL PLATE BEAM GUARDRAIL TYPE A - 100'
 STEEL PLATE BEAM GUARDRAIL TYPE B - 12.5'
 STRONG POST ATTACHED TO CULVERT - 25'
 STEEL PLATE BEAM GUARDRAIL TYPE B - 12.5'
 STEEL PLATE BEAM GUARDRAIL TYPE A - 12.5'
 TRAFFIC BARRIER TERMINAL, TYPE 1 (SPECIAL) TANGENT 1 EACH (LON = 50.5')

PERIMETER EROSION BARRIER
 SIGN (TBR)
 CONSTRUCTION LIMITS

EXISTING STRUCTURE
 STATION 759+75, 10'X7', BOX CULVERT
 LENGTH = 49', 30° SKEW
 REMOVAL OF EXISTING STRUCTURE SN-025-8633

PRairie AREA

| | | |
|-----------|--------------------------|------|
| PROFILE | REVIEWED | DATE |
| | PLOTTED | |
| NOTE BOOK | GRADES CHECKED | |
| | STRUCTURE NOTATIONS CHKD | |



MODEL: D:\proj\184\184-003222\184-003222.dwg
 FILE NAME: P:\184\184-003222\184-003222.dwg
 ORDER: 184-003222-01
 SHEET: 18 of 18
 DATE: 3/26/2024

| | | | | | | | | | | | | |
|-------------------------------|--------|------------|----------|--------|--------|--------|--------|--------|--------|--------|--------|--|
| 757+00 | 757+50 | 758+00 | 758+50 | 759+00 | 759+50 | 760+00 | 760+50 | 761+00 | 761+50 | 762+00 | 762+50 | |
| USER NAME = rhanfland | | DESIGNED - | REVISD - | | | | | | | | | |
| DRAWN - | | REVISD - | | | | | | | | | | |
| PLOT SCALE = 40.0000' / 1 in. | | CHECKED - | REVISD - | | | | | | | | | |
| PLOT DATE = 3/26/2024 | | DATE - | REVISD - | | | | | | | | | |



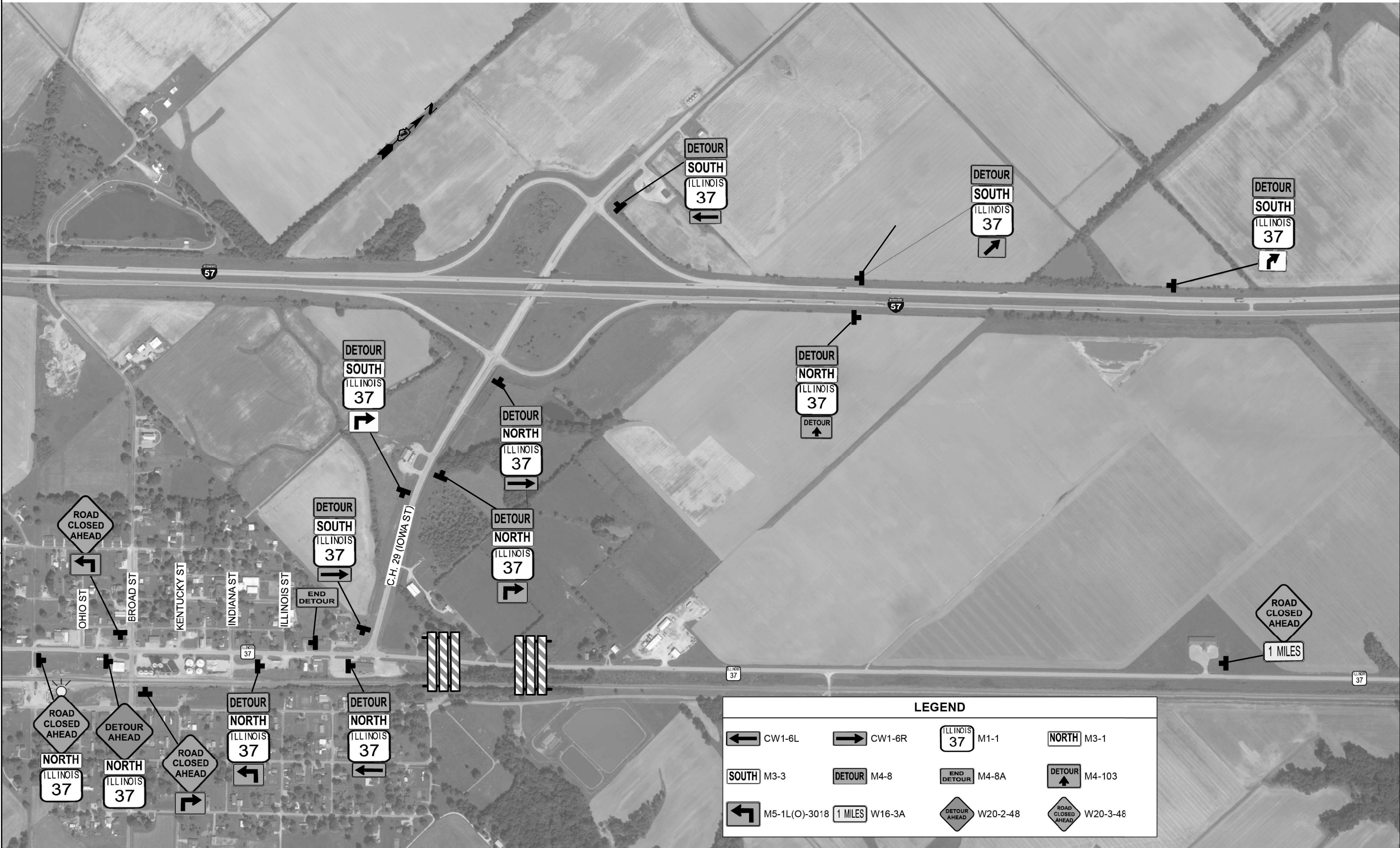
STATE OF ILLINOIS
 DEPARTMENT OF TRANSPORTATION

PLAN & PROFILE

SCALE: SHEET OF SHEETS STA. TO STA.

| | | | | |
|--------------------|---------|-----------|---------------------------|-----------|
| F.A.S. RTE. | SECTION | COUNTY | TOTAL SHEETS | SHEET NO. |
| 2701 | 102 B | EFFINGHAM | 18 | 9 |
| CONTRACT NO. 74984 | | | ILLINOIS FED. AID PROJECT | |

MODEL: Default
 FILE NAME: P:\S\X\X\55X\151570 - PTB - 203-037.DT VV Kuhn_Trellis\Work_Order_4128-Trans\CD\CD\CADD_Sheets\1774984-sht-detour.dgn



| LEGEND | | | |
|---------------|--------|----------|----------|
| CW1-6L | CW1-6R | M1-1 | M3-1 |
| M3-3 | M4-8 | M4-8A | M4-103 |
| M5-1L(O)-3018 | W16-3A | W20-2-48 | W20-3-48 |

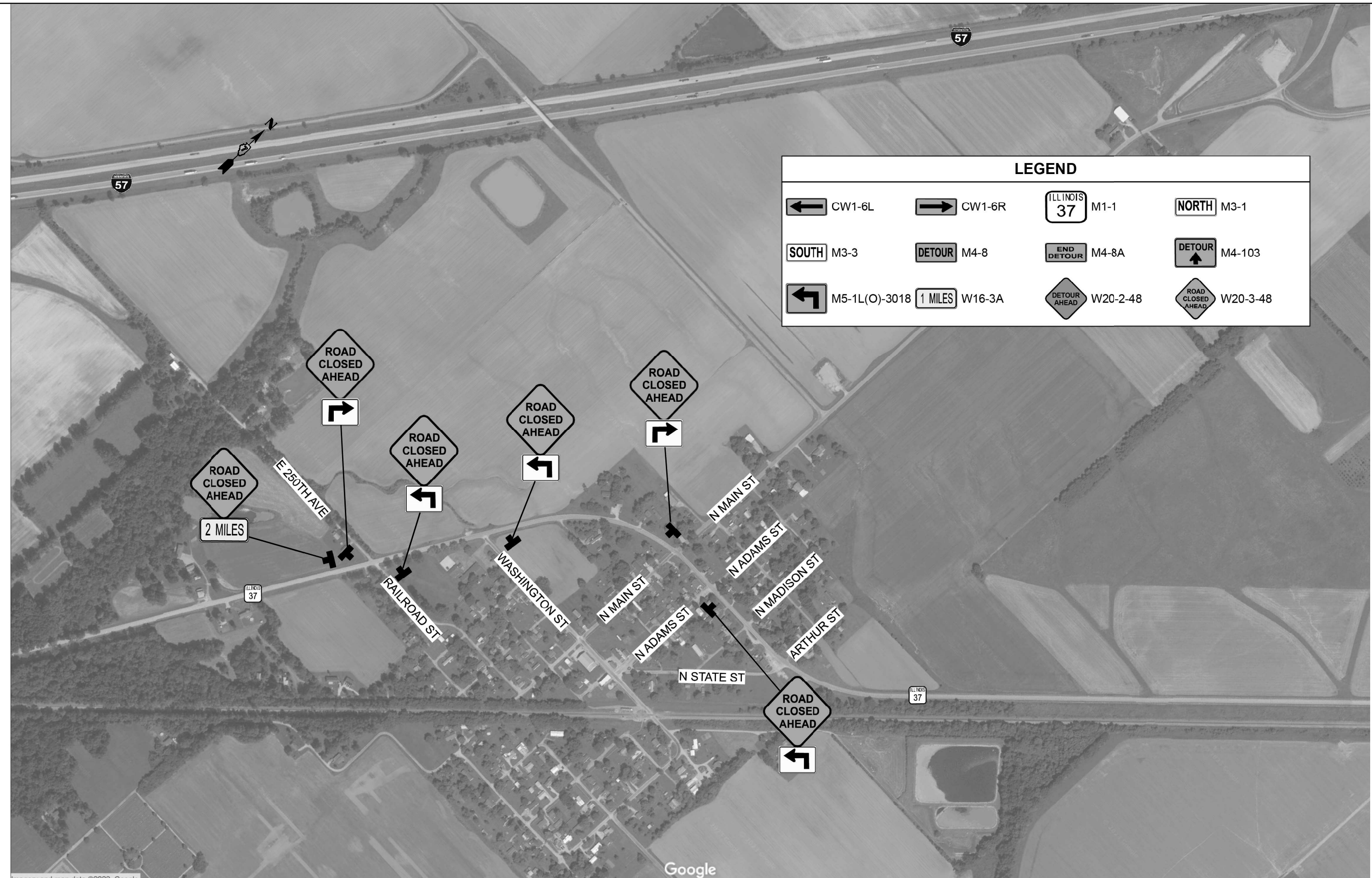


| | | |
|------------------------------|------------|-----------|
| USER NAME = rhanfland | DESIGNED - | REVISED - |
| | DRAWN - | REVISED - |
| PLOT SCALE = 100,0000' / in. | CHECKED - | REVISED - |
| PLOT DATE = 3/17/2024 | DATE - | REVISED - |

**STATE OF ILLINOIS
 DEPARTMENT OF TRANSPORTATION**

| DETOUR MAP | | | |
|---------------|---------|-------------|--------------|
| SCALE: N.T.S. | SHEET 1 | OF 3 SHEETS | STA. TO STA. |

| F.A.S. RTE. | SECTION | COUNTY | TOTAL SHEETS | SHEET NO. |
|---------------------------|---------|-----------|--------------|-----------|
| 2701 | 102 B | EFFINGHAM | 18 | 10 |
| CONTRACT NO. 74984 | | | | |
| ILLINOIS FED. AID PROJECT | | | | |



| LEGEND | | | |
|---------------|--------|----------|----------|
| CW1-6L | CW1-6R | M1-1 | M3-1 |
| M3-3 | M4-8 | M4-8A | M4-103 |
| M5-1L(O)-3018 | W16-3A | W20-2-48 | W20-3-48 |

MODEL: Default
 FILE NAME: P:\S\X\55X\55X15570 - PTB - 2023-03-07.DT_VV_Kuhn1_Trellis\Work_Order_4128-TransCAD\CADD_Sheets\1774984-1st-detour.dgn
 Imagery and map data ©2023, Google



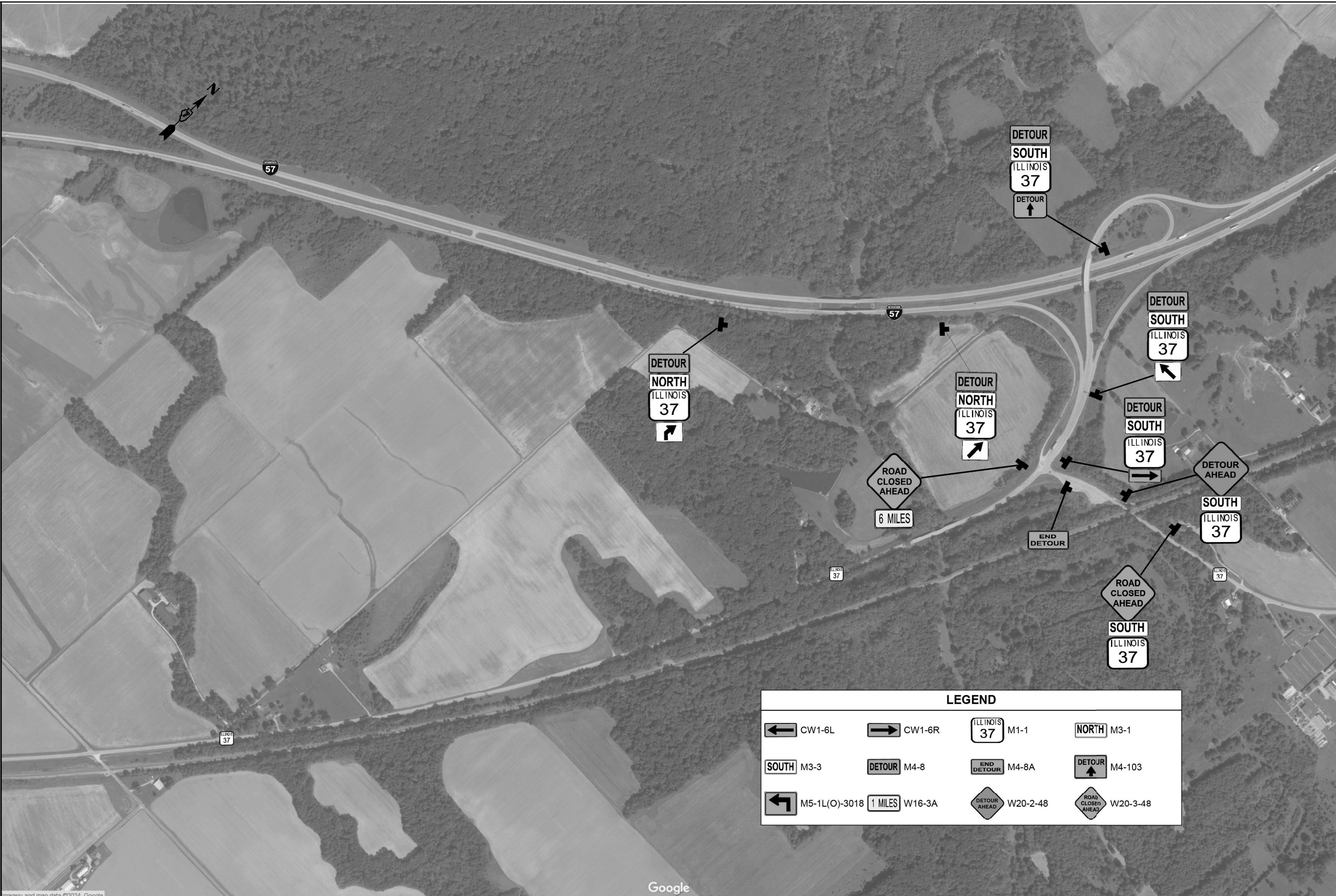
| | | |
|------------------------------|------------|-----------|
| USER NAME = rhanfland | DESIGNED - | REVISED - |
| | DRAWN - | REVISED - |
| PLOT SCALE = 100,0000' / in. | CHECKED - | REVISED - |
| PLOT DATE = 3/17/2024 | DATE - | REVISED - |

**STATE OF ILLINOIS
DEPARTMENT OF TRANSPORTATION**

DETOUR MAP

SCALE: N.T.S. SHEET 2 OF 3 SHEETS STA. TO STA.

| F.A.S. RTE. | SECTION | COUNTY | TOTAL SHEETS | SHEET NO. |
|---------------------------|---------|-----------|--------------|-----------|
| 2701 | 102 B | EFFINGHAM | 18 | 11 |
| CONTRACT NO. 74984 | | | | |
| ILLINOIS FED. AID PROJECT | | | | |



| LEGEND | | | |
|---------------|--------|----------|----------|
| CW1-6L | CW1-6R | M1-1 | M3-1 |
| M3-3 | M4-8 | M4-8A | M4-103 |
| M5-1L(O)-3018 | W16-3A | W20-2-48 | W20-3-48 |

MODEL: Default
 FILE NAME: P:\SXX\55X\15570 - PTB - 203-037.DT_VV_Kuhn_Trellis\Work_Order_4128-TransCAD\CADD_Sheets\174984-sht-detour.dgn
 mery and map data ©2024, Google

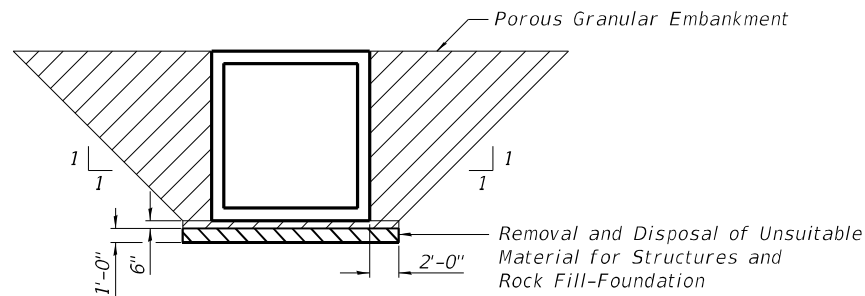


| | | |
|------------------------------|------------|-----------|
| USER NAME = rhanland | DESIGNED - | REVISED - |
| | DRAWN - | REVISED - |
| PLOT SCALE = 100,0000' / in. | CHECKED - | REVISED - |
| PLOT DATE = 3/17/2024 | DATE - | REVISED - |

**STATE OF ILLINOIS
DEPARTMENT OF TRANSPORTATION**

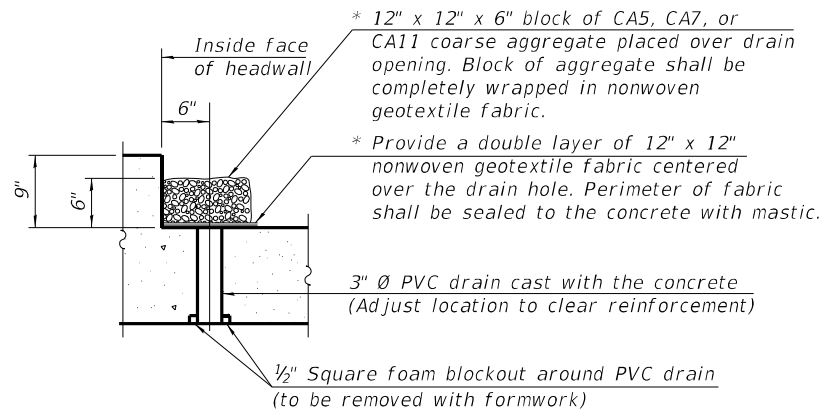
| DETOUR MAP | | | |
|---------------|---------|-------------|--------------|
| SCALE: N.T.S. | SHEET 3 | OF 3 SHEETS | STA. TO STA. |

| F.A.S. RTE. | SECTION | COUNTY | TOTAL SHEETS | SHEET NO. |
|---------------------------|---------|-----------|--------------|-----------|
| 2701 | 102 B | EFFINGHAM | 18 | 12 |
| CONTRACT NO. 74984 | | | | |
| ILLINOIS FED. AID PROJECT | | | | |



PAY LIMITS FOR GRANULAR MATERIALS

* Nonwoven geotextile fabric shall conform to the requirements of Article 1080.01 of the Standard Specifications. The minimum weight of the fabric shall be 6 ounces per square yard.



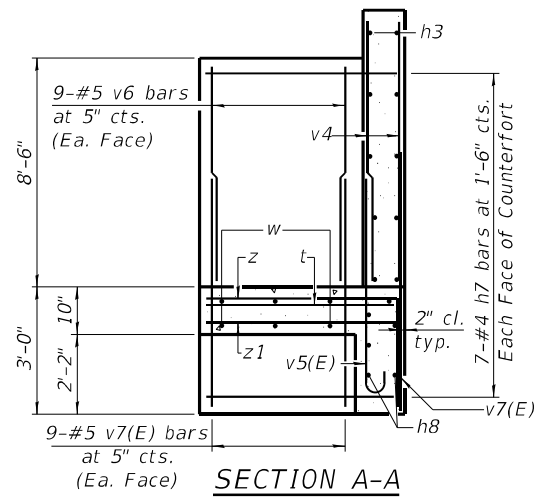
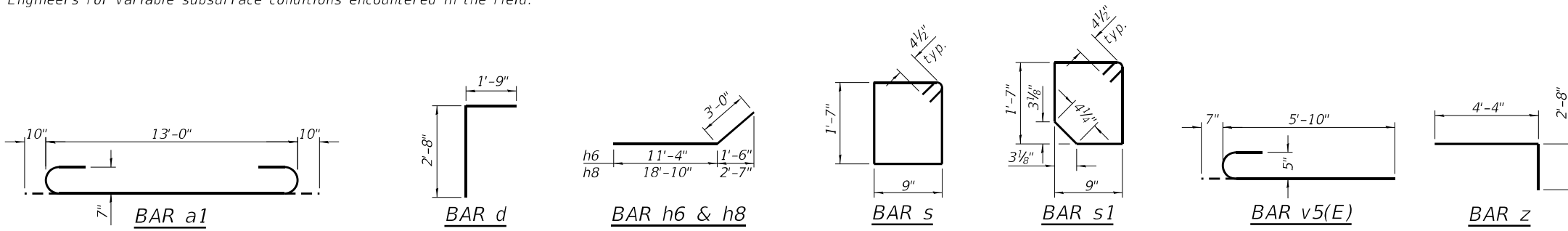
DRAIN DETAIL

Place Drain at midspan at each end. All costs associated with furnishing and constructing the above drain detail will not be measured for payment but shall be included in the contract unit price for the associated work.

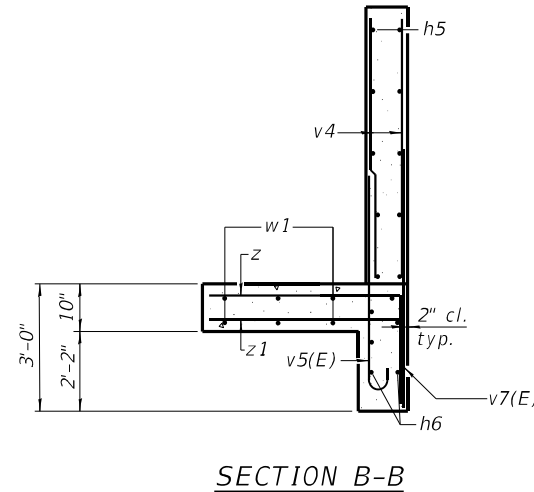
NOTES

Work this sheet with the previous sheet.

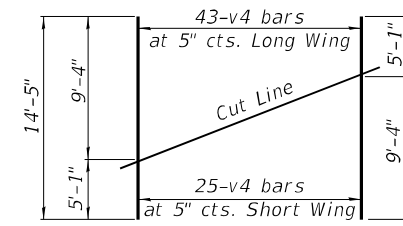
The limits and quantities of removal and replacement shown are based on the boring data and may be modified by the District Geotechnical and Field Engineers for variable subsurface conditions encountered in the field.



SECTION A-A

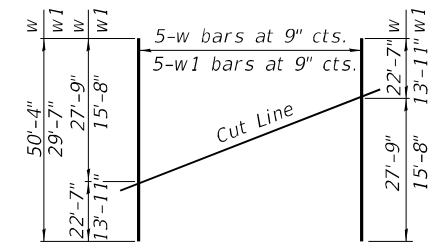


SECTION B-B



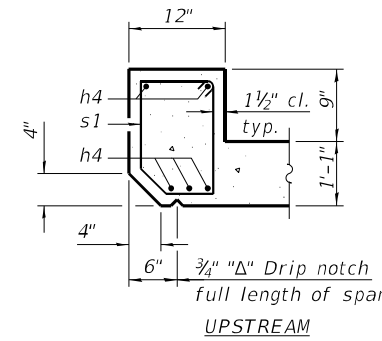
FIELD CUTTING DIAGRAM

Order bars shown full length. Cut as shown and use remainder of bars in opposite wingwall.

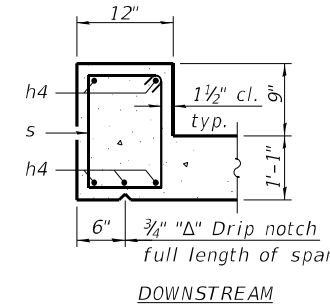


FIELD CUTTING DIAGRAM

Order bars shown full length. Cut as shown and use remainder of bars in opposite wingwall.



UPSTREAM



DOWNSTREAM

SECTION THRU HEADWALL

BILL OF MATERIAL

| Bar | No. | Size | Length | Shape |
|-------|-----|------|---------|-------|
| a1 | 186 | #7 | 14'-8" | U |
| a2 | 94 | #6 | 13'-0" | U |
| d | 24 | #4 | 4'-5" | L |
| h | 78 | #6 | 25'-4" | |
| h2 | 36 | #5 | 25'-4" | |
| h3 | 54 | #5 | 18'-10" | |
| h4 | 20 | #7 | 14'-0" | |
| h5 | 54 | #5 | 11'-4" | |
| h6 | 42 | #5 | 14'-4" | |
| h7 | 28 | #4 | 4'-4" | |
| h8 | 42 | #5 | 21'-10" | |
| h9 | 26 | #4 | 25'-0" | |
| s | 15 | #4 | 5'-5" | U |
| s1 | 15 | #4 | 5'-3" | U |
| t | 10 | #4 | 4'-4" | |
| v | 156 | #6 | 9'-10" | |
| v3 | 8 | #5 | 9'-6" | |
| v4 | 136 | #5 | 14'-5" | |
| v5(E) | 144 | #5 | 6'-5" | U |
| v6 | 36 | #5 | 8'-2" | |
| v7(E) | 180 | #5 | 5'-9" | |
| w | 10 | #5 | 50'-4" | |
| w1 | 10 | #5 | 29'-7" | |
| z | 134 | #5 | 7'-0" | L |
| z1 | 134 | #5 | 4'-4" | |

| | | |
|--|---------|--------|
| Concrete Box Culverts | Cu. Yd. | 105.8 |
| Reinforcement Bars | Pound | 23,070 |
| Reinforcement Bars, Epoxy Coated | Pound | 2,050 |
| Name Plates | Each | 1 |
| Membrane Water-Proofing System for Buried Structures | Sq. Yd. | 91 |
| Geocomposite Wall Drain | Sq. Yd. | 91 |
| Porous Granular Embankment | Cu. Yd. | 350 |
| Removal and Disposal of Unsuitable Material for Structures | Cu. Yd. | 55 |
| Rock Fill-Foundation | Ton | 113 |

MODEL: D:\cfd\... FILE NAME: PLSXXX\55X15570 - PTB_203-037.D7_VV_Kuhn_Trellis\Work_Order_4124-Structures\CAD\071984-shr-culvert2.dgn



| | | |
|----------------------------|----------------|-----------|
| USER NAME = rhanland | DESIGNED - STR | REVISED - |
| | DRAWN - TJZ | REVISED - |
| PLOT SCALE = 0.1660' / in. | CHECKED - TJZ | REVISED - |
| PLOT DATE = 3/17/2024 | DATE - 7/21/23 | REVISED - |

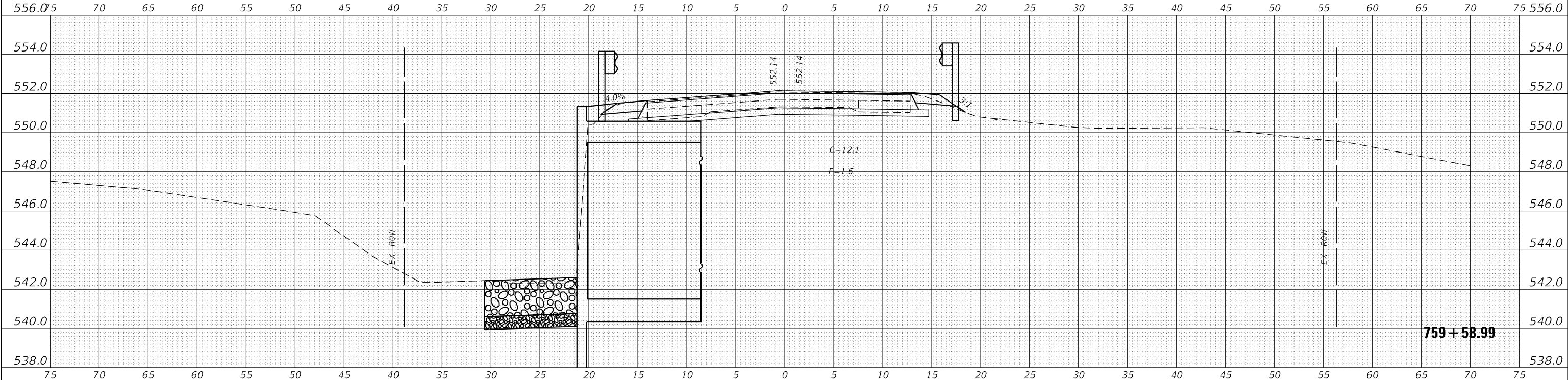
STATE OF ILLINOIS DEPARTMENT OF TRANSPORTATION

CULVERT DETAILS
SN 025-8715 STA. 759 + 71.30

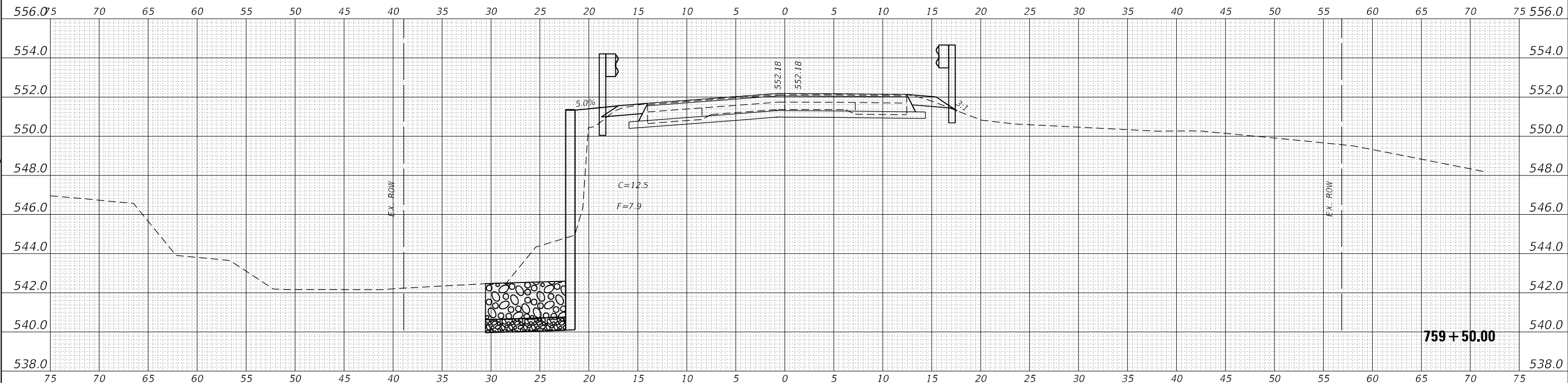
SCALE: SHEET 2 OF 3 SHEETS STA. TO STA.

| F.A.S. RTE. | SECTION | COUNTY | TOTAL SHEETS | SHEET NO. |
|---------------------------|---------|-----------|--------------|-----------|
| 2701 | 102 B | EFFINGHAM | 18 | 14 |
| CONTRACT NO. 74984 | | | | |
| ILLINOIS FED. AID PROJECT | | | | |

| | |
|--------------|---------------|
| DATE | |
| BY | |
| FINAL SURVEY | SURVEYED |
| NOTE BOOK | PLOTTED |
| NO. | TEMPLATE |
| | AREAS CHECKED |



| | |
|-----------------|---------------|
| DATE | |
| BY | |
| ORIGINAL SURVEY | SURVEYED |
| NOTE BOOK | PLOTTED |
| NO. | TEMPLATE |
| | AREAS CHECKED |



MODEL: X5 STA: 759+50.00
 FILE NAME: P:\55X\55X\55X\550 - P1B 203-033 D:\V\Kuh\Trellow\4-18-21\Trellow\CADD_Sheets\771884-1-16-CrossSections.dgn

| | | |
|------------------------------|------------|-----------|
| USER NAME = rhanland | DESIGNED - | REVISED - |
| | DRAWN - | REVISED - |
| PLOT SCALE = 10,0000 * / in. | CHECKED - | REVISED - |
| PLOT DATE = 3/26/2024 | DATE - | REVISED - |

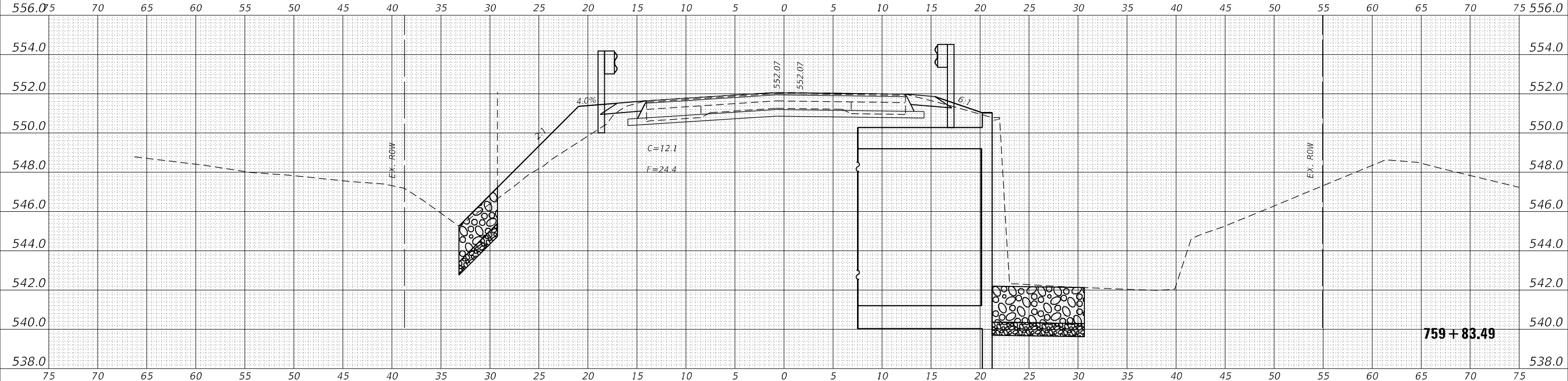
**STATE OF ILLINOIS
DEPARTMENT OF TRANSPORTATION**

CROSS SECTIONS

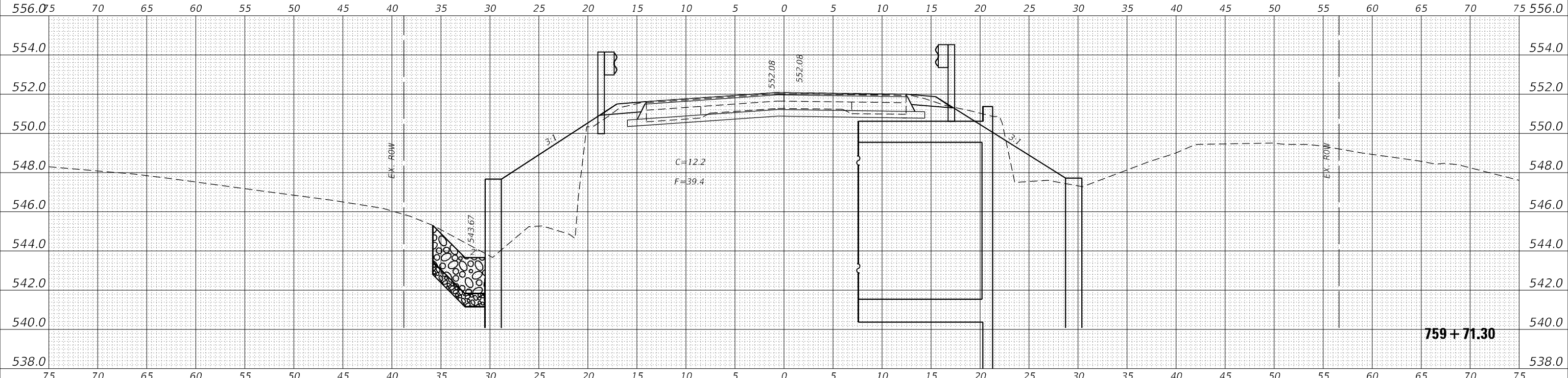
SCALE: SHEET 1 OF 3 SHEETS STA. 759+50.00 R1 TO STA. 759+58.99 R1

| F.A.S. RTE. | SECTION | COUNTY | TOTAL SHEETS | SHEET NO. |
|---------------------------|---------|-----------|--------------|-----------|
| 2701 | 102 B | EFFINGHAM | 18 | 16 |
| CONTRACT NO. 74984 | | | | |
| ILLINOIS FED. AID PROJECT | | | | |

| | |
|---------------|--|
| DATE | |
| BY | |
| SURVEYED | |
| PLOTTED | |
| TEMPLATE | |
| AREAS CHECKED | |
| FINAL SURVEY | |
| NOTE BOOK | |
| NO. | |



| | |
|-----------------|--|
| DATE | |
| BY | |
| SURVEYED | |
| PLOTTED | |
| TEMPLATE | |
| AREAS CHECKED | |
| ORIGINAL SURVEY | |
| NOTE BOOK | |
| NO. | |



MODEL XS STA 759+71.30 TO 759+83.49
 FILE NAME: P:\55555555\55555555 - P1B 2024-03-17 - D:\V\Kuh\Trellis\Work Order 412-2-Tone\CADD_Sheets\759+71.30-759+83.49-CrossSections.dgn

| | | |
|-----------------------------|------------|-----------|
| USER NAME = rhanland | DESIGNED - | REVISED - |
| | DRAWN - | REVISED - |
| PLOT SCALE = 10,0000' / in. | CHECKED - | REVISED - |
| PLOT DATE = 3/17/2024 | DATE - | REVISED - |

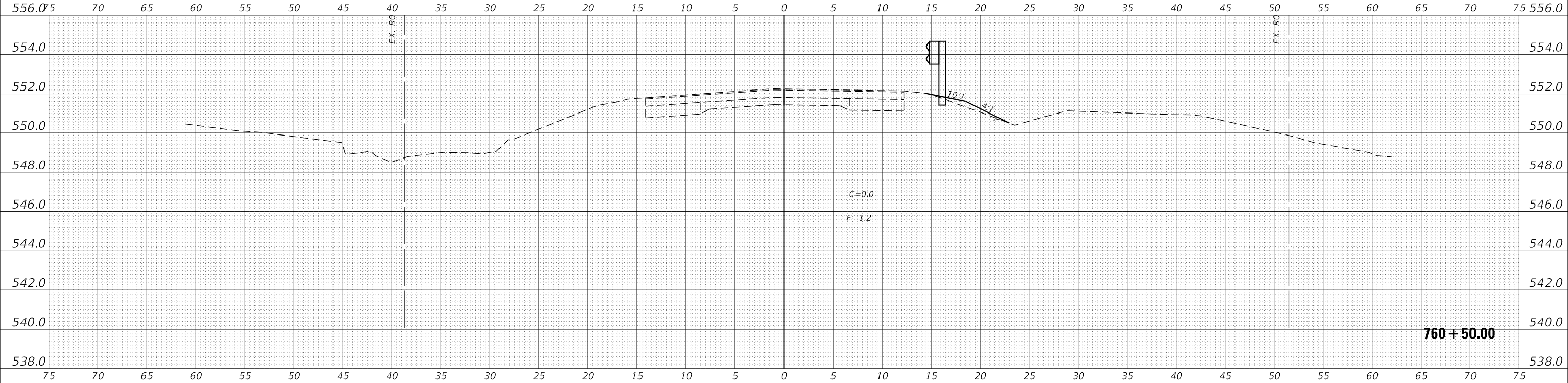
**STATE OF ILLINOIS
 DEPARTMENT OF TRANSPORTATION**

CROSS SECTIONS

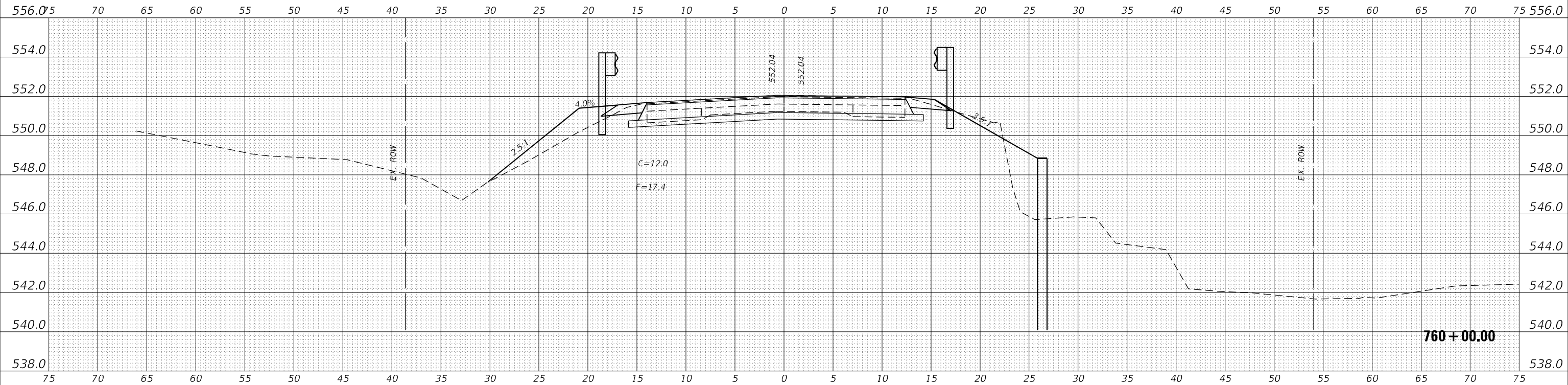
SCALE: SHEET 2 OF 3 SHEETS STA. 759+71.30 R1 TO STA. 759+83.49 R1

| | | | | |
|---------------------------|---------|-----------|--------------|-----------|
| F.A.S. RTE. | SECTION | COUNTY | TOTAL SHEETS | SHEET NO. |
| 2701 | 102 B | EFFINGHAM | 18 | 17 |
| CONTRACT NO. 74984 | | | | |
| ILLINOIS FED. AID PROJECT | | | | |

| | |
|--------------|---------------|
| DATE | |
| BY | |
| FINAL SURVEY | SURVEYED |
| NOTE BOOK | PLOTTED |
| NO. | AREAS CHECKED |



| | |
|-----------------|---------------|
| DATE | |
| BY | |
| ORIGINAL SURVEY | SURVEYED |
| NOTE BOOK | PLOTTED |
| NO. | AREAS CHECKED |



MODEL XS STA 759-761+00.00
FILE NAME: P:\55000\55000-55000-PTB-203-033.D7 VV Kuh's Trelwong Order 4/26/2024\CADD_Sheets\0774984-104-CrossSections.dgn

| | | |
|------------------------------|------------|-----------|
| USER NAME = rhanland | DESIGNED - | REVISED - |
| | DRAWN - | REVISED - |
| PLOT SCALE = 10,0000 * / in. | CHECKED - | REVISED - |
| PLOT DATE = 3/26/2024 | DATE - | REVISED - |

**STATE OF ILLINOIS
DEPARTMENT OF TRANSPORTATION**

CROSS SECTIONS

SCALE: SHEET 3 OF 3 SHEETS STA. 760+00.00 R1 TO STA. 760+50.00 R1

| | | | | |
|---------------------------|---------|-----------|--------------|-----------|
| F.A.S. RTE. | SECTION | COUNTY | TOTAL SHEETS | SHEET NO. |
| 2701 | 102 B | EFFINGHAM | 18 | 18 |
| CONTRACT NO. 74984 | | | | |
| ILLINOIS FED. AID PROJECT | | | | |