

STATE OF ILLINOIS
DEPARTMENT OF TRANSPORTATION

F.A.U. RTE.	SECTION	COUNTY	TOTAL SHEETS	SHEET NO.
7420	(13,14)RS-3	MACON	26	1
		ILLINOIS	CONTRACT NO. 74985	

D-97-062-20

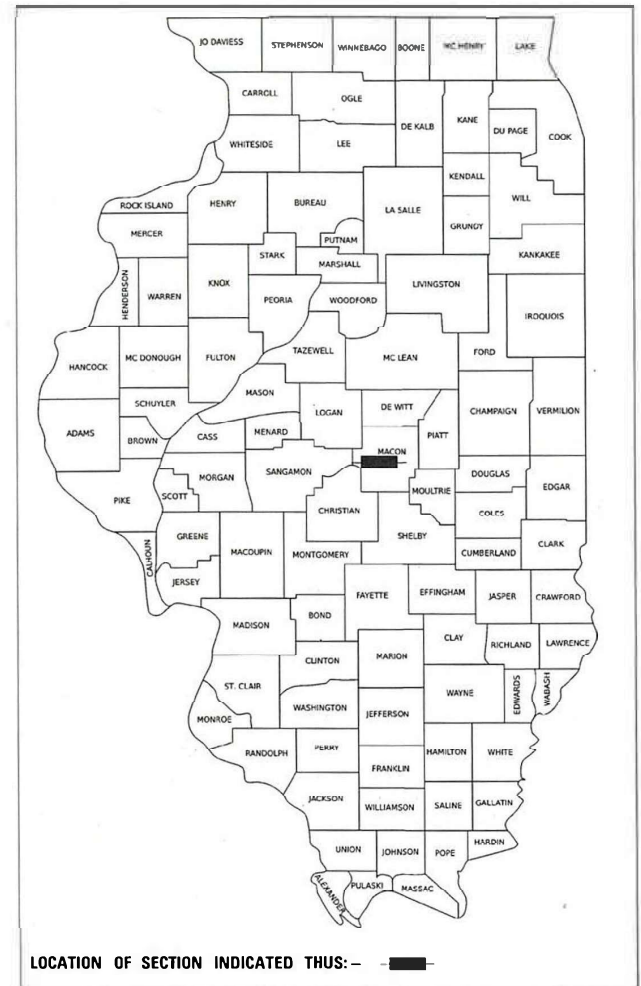
FOR INDEX OF SHEETS, SEE SHEET NO. 2

ADT (2019) = 750
% TRUCKS = 4.0%
CRS = 4.5 (2023)

PROPOSED HIGHWAY PLANS

FAU 7420 MAIN STREET
SECTION (13,14)RS-3
PROJECT STP-5DYZ(623)
COLD MILLING, PAVEMENT PATCHING,
AND HMA RESURFACING
MACON COUNTY

C-97-068-20

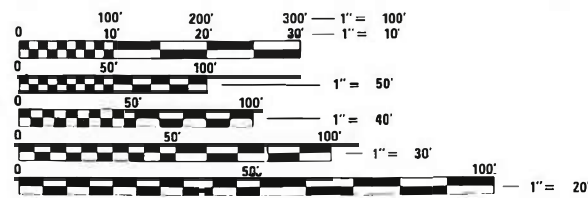


PROJECT BEGINS
STA. 0+00.00
N MERIDIAN ST.

STOP PAVING
STA. 4+42.15
N MERIDIAN ST.

BEGIN PAVING
STA. 0+45.26
W MAIN ST.

PROJECT ENDS
STA. 115+00.00
W MAIN ST.

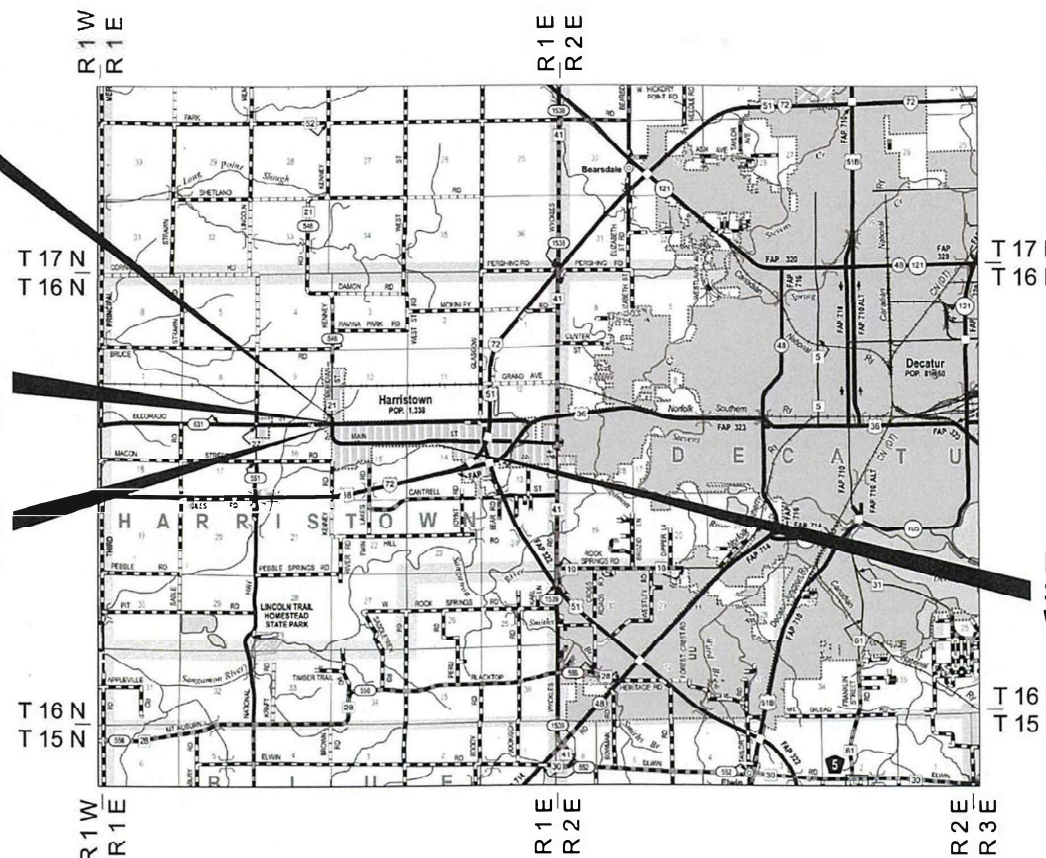


FULL SIZE PLANS HAVE BEEN PREPARED USING STANDARD ENGINEERING SCALES. REDUCED SIZED PLANS WILL NOT CONFORM TO STANDARD SCALES. IN MAKING MEASUREMENTS ON REDUCED PLANS, THE ABOVE SCALES MAY BE USED.

J.U.L.I.E.
JOINT UTILITY LOCATION INFORMATION FOR EXCAVATION
1-800-892-0123
OR 811

PROJECT ENGINEER: MATT BOWER
PROJECT MANAGER: AJ CUCCIO

CONTRACT NO. 74985



BARTLETT & WEST, INC.
LICENSE EXPIRATION: 11/30/ 2025

GROSS LENGTH = 11986 FT. = 2.270 MILES
NET LENGTH = 11874 FT. = 2.249 MILES

STATE OF ILLINOIS
DEPARTMENT OF TRANSPORTATION

SUBMITTED March 28 2024
Jeffrey P. Hyndes
REGIONAL ENGINEER

May 10, 2024 [Signature]
ENGINEER OF DESIGN AND ENVIRONMENT

May 10, 2024 [Signature]
DIRECTOR OF HIGHWAYS PROJECT IMPLEMENTATION

PRINTED BY THE AUTHORITY
OF THE STATE OF ILLINOIS

INDEX OF SHEETS

1	COVER SHEET
2	INDEX OF SHEETS, LIST OF STANDARDS, AND GENERAL NOTES
3-5	SUMMARY OF QUANTITIES
6-9	TYPICAL SECTIONS
10-11	SCHEDULE OF QUANTITIES
12-15	PLAN SHEETS
16-19	PAVEMENT MARKING SHEETS
20-23	D7 DETAIL NO. 7800001 - PAVEMENT MARKING AND RAISED REFLECTIVE PAVEMENT MARKERS
24-25	RURAL ENTRANCE AND MAILBOX TURNOUT DETAILS WITH SHOULDERS
26-26	CONCRETE MEDIAN (DOWELLED) DETAILS

STATE STANDARDS

000001 - 08	STANDARD SYMBOLS, ABBREVIATIONS AND PATTERNS
001006	DECIMAL OF AN INCH AND OF A FOOT
420001 - 10	PAVEMENT JOINTS
442201 - 03	CLASS C AND D PATCHES
606001 - 08	CONCRETE CURB TYPE B AND COMBINATION CONCRETE CURB AND GUTTER
606301 - 04	PC CONCRETE ISLANDS AND MEDIANS
701001 - 02	OFF-RD OPERATIONS, 2L, 2W, MORE THAN 15' (4.5 M) AWAY
701006 - 05	OFF-RD OPERATIONS, 2L, 2W, 15' (4.5 M) TO 24" (600 MM)
701011 - 04	OFF-RD MOVING OPERATIONS, 2L, 2W, DAY ONLY
701301 - 04	LANE CLOSURE, 2L, 2W, SHORT TIME OPERATIONS
701311 - 03	LANE CLOSURE, 2L, 2W, MOVING OPERATIONS - DAY ONLY
701501 - 06	URBAN LANE CLOSURE, 2L, 2W, UNDIVIDED
701901 - 09	TRAFFIC CONTROL DEVICES
780001 - 05	TYPICAL PAVEMENT MARKINGS

QUANTITY APPLICATION RATES

BITUMINOUS MATERIALS (TACK COAT)	0.05 LB/SQ FT (MILLED HMA)
HOT-MIX ASPHALT	112 LBS/SQ YD * IN
GRANULAR MATERIAL	2.05 TONS/ CU YD

GENERAL NOTES

THE WORK IN THIS SECTION INCLUDES PATCHING, MILLING AND RESURFACING THE EXISTING PAVEMENT, AGGREGATE WEDGE SHOULDERS, THERMOPLASTIC PAVEMENT MARKINGS, AND ANY OTHER WORK NECESSARY TO COMPLETE THIS SECTION.

THIS PROJECT IS LOCATED ON MAIN ST. STARTING 0.1 MILES NORTH OF ELDORADO ST. AND CONTINUING FOR 2.27 MILES, ENDING AT N GLASGOW RD.

LONGITUDINAL JOINT SEALANT WILL BE APPLIED BETWEEN THE BINDER AND THE SURFACE COURSE AT ALL CENTERLINE JOINTS.

MATERIAL FOR AGGREGATE WEDGE SHOULDER, TYPE B SHALL BE CRUSHED STONE, CRUSHED CONCRETE OR RAP. MATERIAL FOR AGGREGATE SURFACE COURSE, TYPE B SHALL BE CRUSHED STONE OR CRUSHED CONCRETE.

WHEN APPLYING SHORT TERM PAVEMENT MARKINGS, TEMPORARY TAPE SHALL BE USED ON THE SURFACE AND PAINT SHALL BE USED ON THE MILLED AND BINDER SURFACES.

THE MIXTURE REQUIREMENTS SHOWN BELOW ARE APPLICABLE TO THIS PROJECT.

LOCATION	MIXTURE USE(S)	PG	DESIGN AIR VOIDS	MIXTURE COMPOSITION	FRICTION AGGREGATE	MIXTURE WEIGHT	QUALITY MANAGEMENT PROGRAM	SUBLOT SIZE	MATERIAL TRANSFER DEVICE (REQUIRED?)
MAINLINE	HOT-MIX ASPHALT SURFACE COURSE, IL-9.5, MIX "C", N70	PG 64-22	4.0% @ N70	IL-9.5	MIXTURE C	N70	QCP	1000	N/A
MAINLINE	HOT-MIX ASPHALT BINDER COURSE, IL-9.5FG, N70	PG 64-22	4.0% @ N70	IL-9.5FG	N/A	N70	QCP	1000	N/A
MAINLINE	CLASS "D" PATCHING	PG 64-22	4.0% @ N70	IL-19.0	N/A	N70	QC/QA	3000	N/A
SIDERoads & ENTRANCES	INCIDENTAL HOT-MIX ASPHALT SURFACING	PG 64-22	4.0% @ N70	IL-9.5	MIXTURE C	N70	QC/QA	3000	N/A

REV. - MS

MODEL: Index - General Notes 1 (Sheet)
 FILE NAME: p:\bar\barwest\paw\barwest\paw\4\Documents\200002082198 - Main St Hamstead\OpenRoads Design\Plan Sheets\002 - Gen Notes_Index.dgn



USER NAME =	ajc01914	DESIGNED -	REVISIONS -
		DRAWN -	REVISED -
PLOT SCALE =	0.08333317 / in.	CHECKED -	REVISED -
PLOT DATE =	3/21/2024	DATE -	REVISED -

STATE OF ILLINOIS
DEPARTMENT OF TRANSPORTATION

INDEX OF SHEETS, LIST OF STANDARDS,
GENERAL NOTES, AND MIXTURE REQUIREMENTS

SCALE: 1 = 1 SHEET 1 OF 1 SHEETS STA. TO STA.

F.A. U. RTE.	SECTION	COUNTY	TOTAL SHEETS	SHEET NO.
7420	(13,14)RS-3	MACON	25	2
CONTRACT NO. 74985				
ILLINOIS FED. AID PROJECT				

Long Section Number

MODEL: SummaryQuant-1 [Sheet]
 FILE NAME: p:\barwest\proj\barwest\paw\Documents\2000202082198- Main St Harrisburg\OpenRoads Design\Plan Sheets\003_001-004_SUMMARY OF QUANTITIES.dgn

CODE NO.	ITEM	UNIT	TOTAL QUANTITY	CONSTRUCTION CODE	
				80% FEDERAL / 20% STATE ROADWAY	
				0005	
				URBAN	
				S.N.	
35300500	PORTLAND CEMENT CONCRETE BASE COURSE 10"	SQ YD	23		23
40200800	AGGREGATE SURFACE COURSE, TYPE B	TON	269		269
40600290	BITUMINOUS MATERIALS (TACK COAT)	POUND	12048		12048
40600370	LONGITUDINAL JOINT SEALANT	FOOT	11900		11900
40600990	TEMPORARY RAMP	SQ YD	450		450
40602970	HOT-MIX ASPHALT BINDER COURSE, IL-9.5FG, N70	TON	2628		2628
40604052	HOT-MIX ASPHALT SURFACE COURSE, IL-9.5, MIX "C", N70	TON	2984		2984
40800050	INCIDENTAL HOT-MIX ASPHALT SURFACING	TON	335		335
44000158	HOT-MIX ASPHALT SURFACE REMOVAL, 2 1/4"	SQ YD	26777		26777
44003100	MEDIAN REMOVAL	SQ FT	470		470
44201785	CLASS D PATCHES, TYPE I, 12 INCH	SQ YD	535		535
44201789	CLASS D PATCHES, TYPE II, 12 INCH	SQ YD	535		535
48102100	AGGREGATE WEDGE SHOULDER, TYPE B	TON	1495		1495
X6061300	CONCRETE MEDIAN, TYPE SB-6.06 (DOWELLED)	SQ FT	199		199

*SPECIALTY ITEM

REV. - MS

Bartlett & West

USER NAME =	ajc01914	DESIGNED -	REVISED -
DRAWN -		DRAWN -	REVISED -
PLOT SCALE =	0.08333317' / in.	CHECKED -	REVISED -
PLOT DATE =	3/26/2024	DATE -	REVISED -

STATE OF ILLINOIS
DEPARTMENT OF TRANSPORTATION

SUMMARY OF QUANTITIES

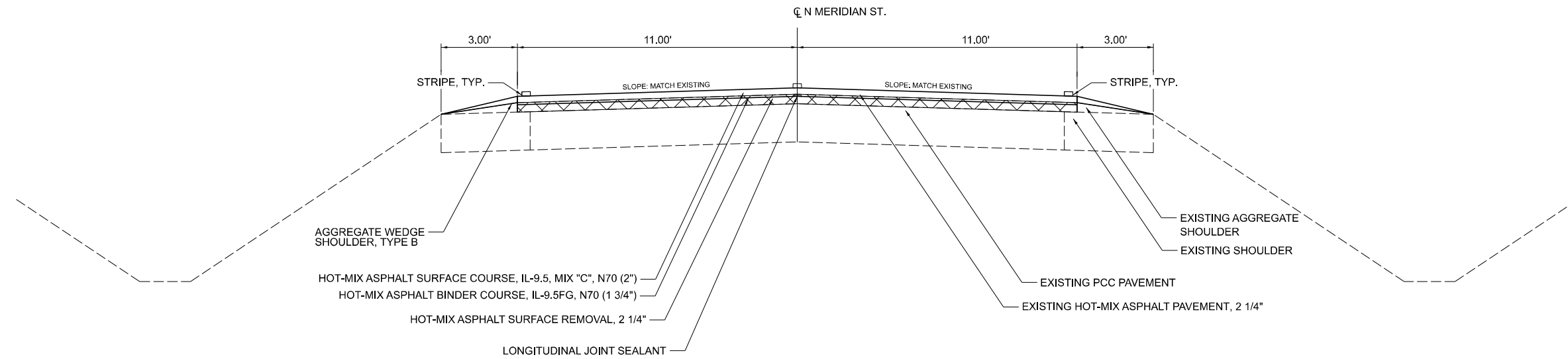
SCALE: NO SCALE SHEET 1 OF 3 SHEETS STA. TO STA.

F.A.U. RTE.	SECTION	COUNTY	TOTAL SHEETS	SHEET NO.
7420	(13,14)RS-3	MACON	26	3
CONTRACT NO. 74985				

ILLINOIS FED. AID PROJECT
Long Section Number

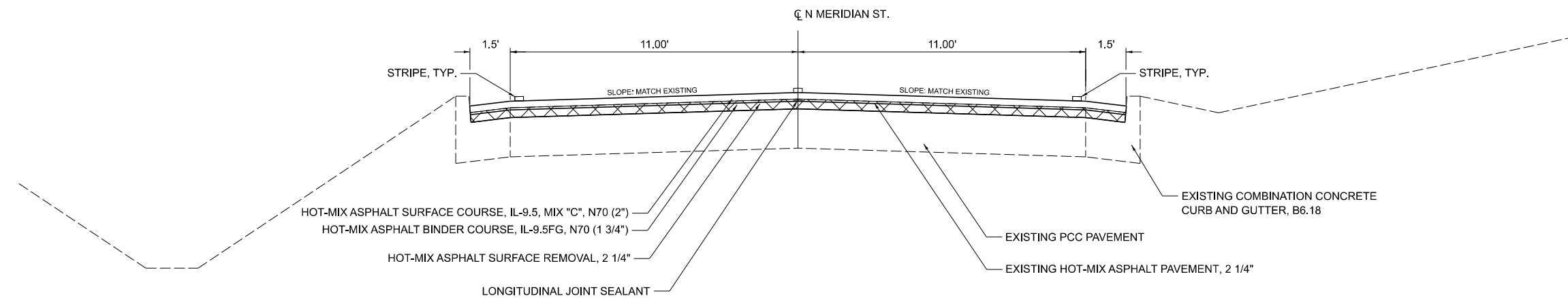
N MERIDIAN ST.

STA 00+00 TO STA 1+62.74



N MERIDIAN ST.

STA 1+62.74 TO STA 4+42.60 - N MERIDIAN ST



LEGEND

 HOT - MIX ASPHALT SURFACE REMOVAL, 2 1/4"

MODEL: Typical 1 (Sheet) FILE NAME: p:\projects\openroads\design\plan\Sheet004_001_004_Main St_Typical Sections.dgn

Bartlett & West

1207 ENCLAW DRIVE, SUITE 2 - JERSEYVILLE, IL 62502
PHONE 618-634-0001
ILLINOIS DESIGN FIRM NO. 14-005566-0002
WWW.BARTLETTWEST.COM

USER NAME =	ajc01914
PLOT SCALE =	0.08333317' / in.
PLOT DATE =	3/21/2024

DESIGNED -	REVIS
DRAWN -	REVIS
CHECKED -	REVIS
DATE -	REVIS

STATE OF ILLINOIS
DEPARTMENT OF TRANSPORTATION

TYPICAL SECTIONS

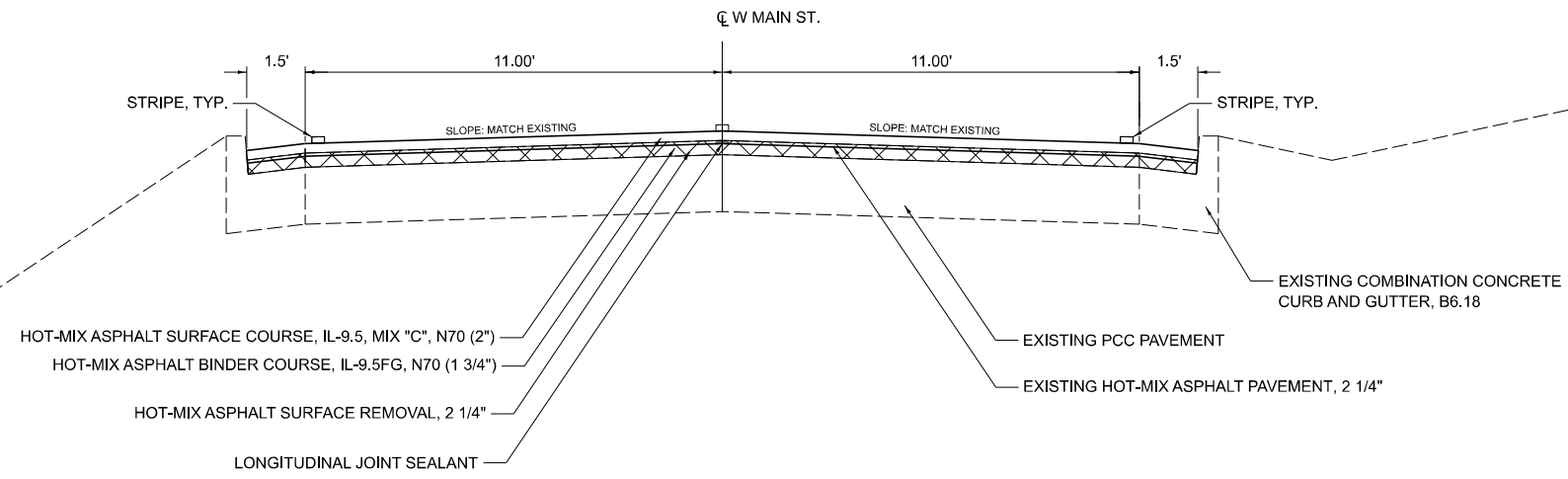
SCALE: 1"=5' SHEET 1 OF 4 SHEETS STA. TO STA.

F.A.U. RTE.	SECTION	COUNTY	TOTAL SHEETS	SHEET NO.
7420	(13,14)RS-3	MACON	26	6
CONTRACT NO. 74985				

ILLINOIS FED. AID PROJECT
Long Section Number

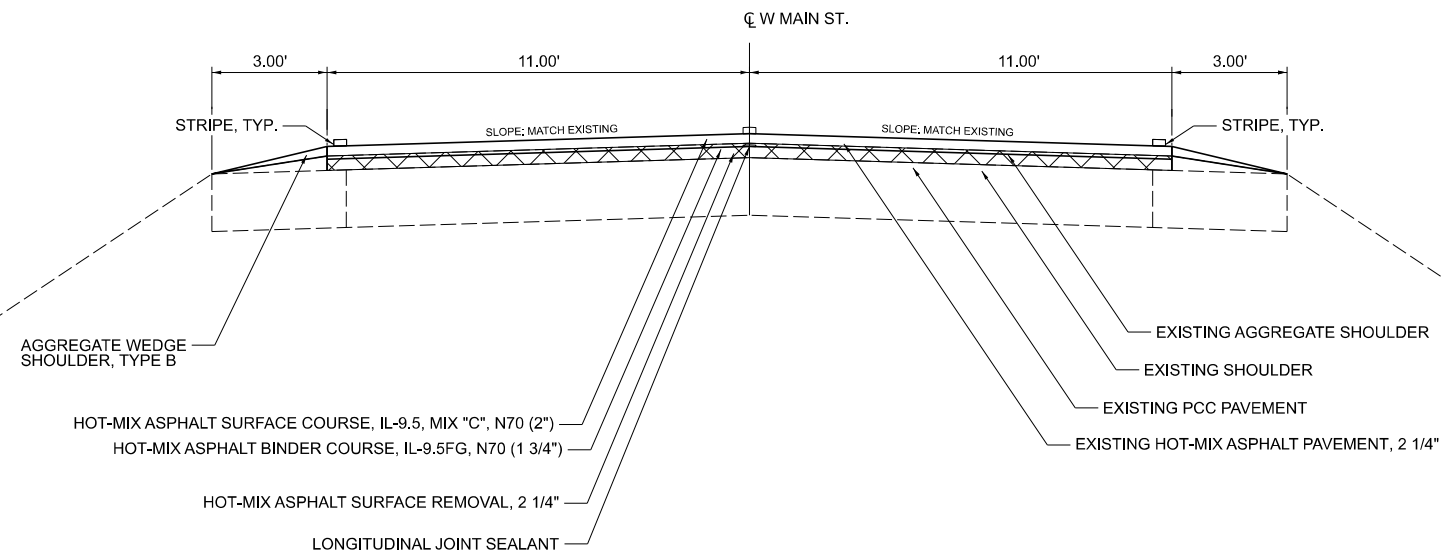
W MAIN ST.

STA 0+45.26 TO STA 4+34.53



W MAIN ST.

STA 4+34.53 TO STA 5+77.01



LEGEND

 HOT - MIX ASPHALT SURFACE REMOVAL, 2 1/4"

MODEL: Typical 2 (Sheet) FILE NAME: I:\projects\74985\74985.dwg\Drawings\Roads\Design\Plan Sheets\004_001_004_Main St_Typical Sections.dwg

Bartlett & West

1207 ENCLAW DRIVE, SUITE 2 - JERSEYVILLE, IL 62552
PHONE 618-634-0001
ILLINOIS DESIGN FIRM NO. 18-00566-0002
WWW.BARTLETTWEST.COM

USER NAME =	ajc01914
PLOT SCALE =	0.08333317' / in.
PLOT DATE =	3/21/2024

DESIGNED -	REVISD -
DRAWN -	REVISED -
CHECKED -	REVISED -
DATE -	REVISED -

**STATE OF ILLINOIS
DEPARTMENT OF TRANSPORTATION**

TYPICAL SECTIONS

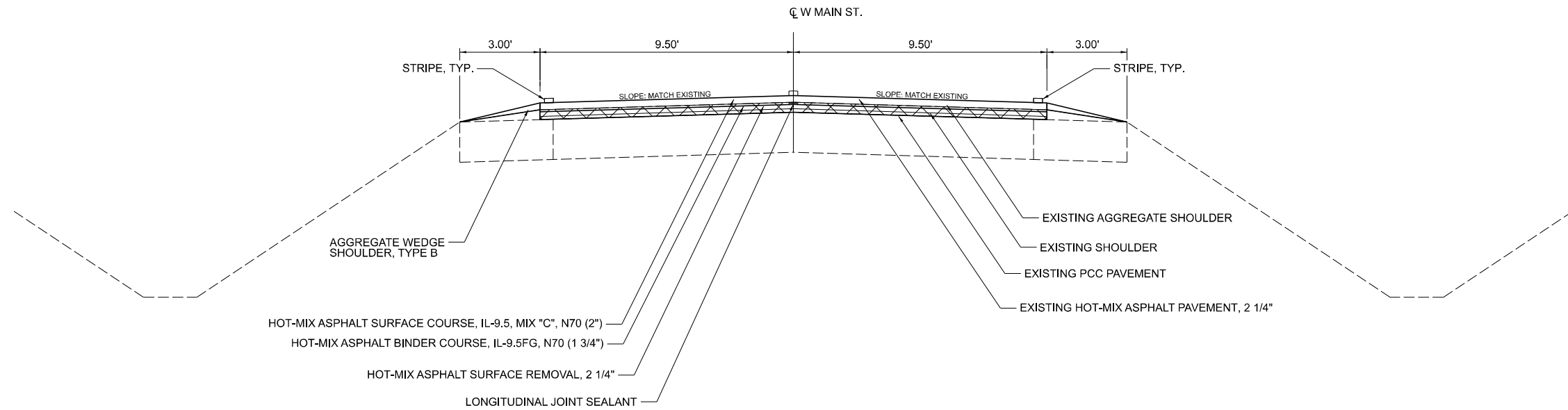
SCALE: 1"=5' SHEET 2 OF 4 SHEETS STA. TO STA.

F.A.U. RTE.	SECTION	COUNTY	TOTAL SHEETS	SHEET NO.
7420	(13,14)RS-3	MACON	26	7
CONTRACT NO. 74985				

ILLINOIS FED. AID PROJECT
Long Section Number

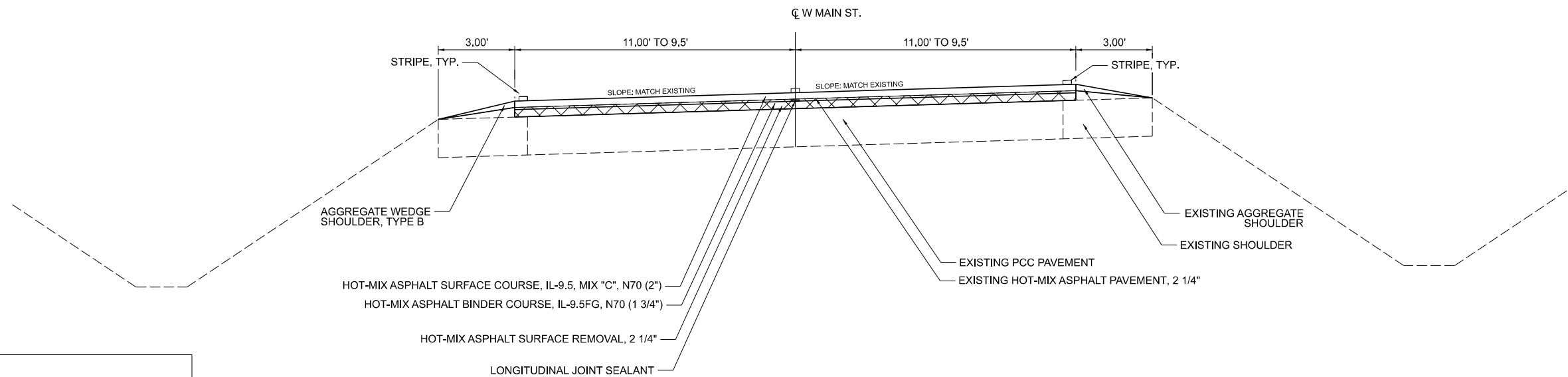
W MAIN ST.

STA 5+77.01 TO STA 7+15.75
STA 17+71.39 TO STA 114+48.63



W MAIN ST.

STA 7+15.75 TO STA 17+71.39



LEGEND

 HOT - MIX ASPHALT SURFACE REMOVAL, 2 1/4"

Bartlett & West

1207 ENCLAND DRIVE, SUITE 2 - JERSEYVILLE, IL 62502
PHONE 618-634-0001
ILLINOIS DESIGN FIRM NO. 18-005566-0002
WWW.BARTLETTWEST.COM

USER NAME =	ajc01914
PLOT SCALE =	0.08333317' / in.
PLOT DATE =	3/21/2024

DESIGNED -	REVISÉ -
DRAWN -	REVISÉ -
CHECKED -	REVISÉ -
DATE -	REVISÉ -

STATE OF ILLINOIS
DEPARTMENT OF TRANSPORTATION

TYPICAL SECTIONS

SCALE: 1"=5' SHEET 3 OF 4 SHEETS STA. TO STA.

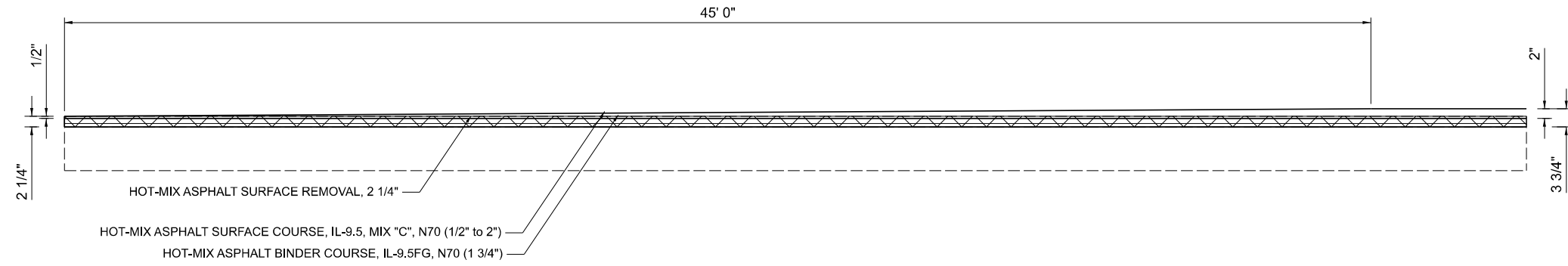
F.A.U. RTE.	SECTION	COUNTY	TOTAL SHEETS	SHEET NO.
7420	(13,14)RS-3	MACON	26	8
CONTRACT NO. 74985				

ILLINOIS FED. AID PROJECT
Long Section Number

MODEL: Typical 8 (Sheet)
FILE NAME: p:\projects\7420\7420\13-14\Documents\20200208\2185-High St. Horizontal\OpenRoads Designer\Plan Sheets\004_001_004_Main St. Typical Sections.dgn

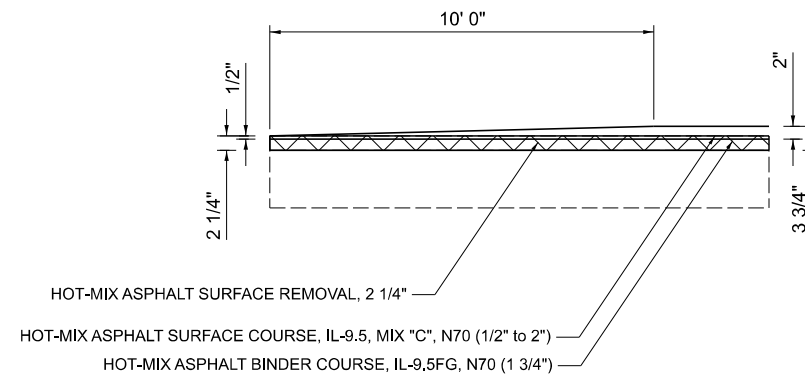
TYPICAL PAVING TAPER ALTERNATIVE 1

STA 0+00.00 TO 0+45.00 - W MAIN ST.
STA 114+55.00 TO STA 115+00.00 - W MAIN ST.



TYPICAL PAVING TAPER ALTERNATIVE 2

STA 4+32.15 TO STA 4+42.15 - N MERIDIAN ST.
STA 0+45.26 TO STA 0+55.26 - W MAIN ST.



LEGEND

 HOT - MIX ASPHALT SURFACE REMOVAL, 2 1/4"

Bartlett & West

1207 ENCLAVE DRIVE, SUITE 2 - JERSEYVILLE, IL 62502
PHONE 618-634-0001
ILLINOIS DESIGN FIRM NO. 144-00556-0002
WWW.BARTLETTWEST.COM

USER NAME	=	ajc01914
PLOT SCALE	=	0.08333317' / in.
PLOT DATE	=	3/21/2024

DESIGNED	-	REVISED	-
DRAWN	-	REVISED	-
CHECKED	-	REVISED	-
DATE	-	REVISED	-

STATE OF ILLINOIS
DEPARTMENT OF TRANSPORTATION

TYPICAL SECTIONS

SCALE: 1"=5' SHEET 4 OF 4 SHEETS STA. TO STA.

F.A.U. RTE.	SECTION	COUNTY	TOTAL SHEETS	SHEET NO.
7420	(13,14)RS-3	MACON	26	9
CONTRACT NO. 74985				

ILLINOIS FED. AID PROJECT
Long Section Number

MODEL: Typical 4 (Sheet)
FILE NAME: p:\projects\openroads\design\plan\sheet\004_001_004_Main St_Typical Sections.dgn

40200800					
AGGREGATE ENTRANCE SCHEDULE				AREA	AGGREGATE SURFACE COURSE, TYPE B
STATION	RT / LT	TYPE	MATERIAL	SQ YD	TON
2+88.88	RT	CE	AGG	25.4	4
7+85.23	RT	CE	AGG	43.3	7
8+01.38	LT	PE	AGG	103.9	15
8+56.45	RT	CE	AGG	40.6	6
11+61.73	LT	PE	AGG	21.8	4
12+50.33	RT	PE	AGG	29.0	5
15+76.32	LT	PE	AGG	29.7	5
19+25.35	RT	PE	AGG	18.5	3
19+35.67	LT	PE	AGG	16.1	3
19+92.47	RT	PE	AGG	17.4	3
20+11.07	LT	PE	AGG	9.4	2
20+74.53	RT	PE	AGG	17.8	3
21+76.04	LT	PE	AGG	12.3	2
22+03.08	RT	PE	AGG	20.9	3
26+20.87	LT	PE	AGG	15.5	3
26+80.29	LT	PE	AGG	12.3	2
28+35.32	RT	PE	AGG	36.3	6
29+43.88	LT	PE	AGG	32.1	5
29+68.91	RT	PE	AGG	31.9	5
31+85.32	RT	PE	AGG	16.9	3
32+69.02	LT	PE	AGG	19.0	3
32+83.91	RT	PE	AGG	20.5	3
32+87.99	LT	PE	AGG	19.0	3
34+99.75	RT	PE	AGG	30.9	5
35+62.51	LT	PE	AGG	19.1	3
38+43.79	LT	PE	AGG	17.2	3
41+36.34	LT	PE	AGG	11.9	2
42+04.39	LT	PE	AGG	20.5	3
45+52.09	LT	PE	AGG	23.3	4
46+96.76	LT	PE	AGG	14.3	3
47+72.84	LT	PE	AGG	13.1	2
48+48.22	LT	PE	AGG	26.9	4
49+95.29	RT	PE	AGG	41.7	6
51+49.46	LT	PE	AGG	41.7	6
54+61.95	LT	PE	AGG	26.5	4
55+85.53	LT	PE	AGG	29.1	5
61+50.94	LT	PE	AGG	25.2	4
63+19.79	RT	PE	AGG	23.7	4
81+93.05	LT	PE	AGG	31.5	5
85+13.71	LT	PE	AGG	59.9	9
89+18.56	RT	PE	AGG	21.1	4
89+24.47	LT	PE	AGG	16.1	3
95+77.62	LT	CE	AGG	39.3	6
96+54.84	RT	PE	AGG	41.3	6
97+00.99	RT	PE	AGG	41.3	6
98+51.69	LT	CE	AGG	34.5	5
98+84.39	RT	PE	AGG	34.0	5
99+12.71	LT	CC	ACC	44.3	7
100+57.96	RT	CC	ACC	39.6	6
102+19.23	LT	PE	AGG	30.0	5
104+52.28	RT	PE	AGG	39.3	6
105+27.47	RT	PE	AGG	16.0	3
106+05.82	RT	PE	AGG	12.2	2
109+42.36	LT	PE	AGG	35.3	6
110+55.49	LT	PE	AGG	18.6	3
110+67.52	RT	PE	AGG	40.6	6
111+64.56	LT	PE	AGG	17.4	3
112+00.52	RT	PE	AGG	24.2	4
112+22.50	RT	PE	AGG	24.2	4
112+75.96	LT	PE	AGG	29.3	5
113+54.88	LT	PE	AGG	27.2	4
W. MAIN ST. SUBTOTAL					269
TOTAL					269

PAVING SCHEDULE								40600290	40600370	40600990	40604052	40602970	44000158	48102100	
STATION	TO	STATION	REMARKS	FT	WIDTH FT	PAVING DEPTH IN	PROPOSED PAVEMENT SURFACE SQ YD	BITUMINOUS MATERIALS (TACK COAT) POUND	LONGITUDINAL JOINT SEALANT FOOT	TEMPORARY RAMP SQ YD	HOT-MIX ASPHALT SURFACE COURSE, IL-9.5, MIX "C", N70 TON	HOT-MIX ASPHALT BINDER COURSE, IL-9.5FG, N70 TON	HOT-MIX ASPHALT SURFACE REMOVAL, 2 1/4" SQ YD	AGGREGATE WEDGE SHOULDER, TYPE B TON	
0+00.00	TO	0+45.00	TAPER - ALT 1	45.0	22.0 TO 23.5	2 1/4 TO 3 3/4	37.1	16.8	45	12.3	3	4	38	7	
0+45.00	TO	1+62.74	MAINLINE - AGG	117.7	22.5 TO 28.0	3 3/4	413.8	186.3	118	12.5	47	41	414	17	
1+62.74	TO	4+32.15	MAINLINE - C&G	269.4	28.0 TO 121.5	3 3/4	1168.2	525.7	270		131	115	1169	39	
4+32.15	TO	4+42.15	TAPER - ALT 2	10.0	121.5 TO 202.0	3 3/4 TO 2 1/4	159.4	71.8	10	13.4	12	16	160		
N MERIDIAN ST. SUBTOTAL								800.6	443	38.2	193	176	63		
0+45.26	TO	0+55.26	TAPER - ALT 2	10.0	190.0 TO 116	2 1/4 TO 3 3/4	149.8	67.5	10	13.4	11	15	150		
0+55.26	TO	3+05.97	MAINLINE - C&G	250.7	116.0 TO 22.0	3 3/4	1107.0	498.2	251		124	109	1108	3	
3+05.97	TO	5+47.01	MAINLINE - C&G	241.0	22.0	3 3/4	589.2	265.2	242		66	58	590	26	
5+47.01	TO	7+62.77	MAINLINE - AGG	215.8	22.0 TO 18.0	3 3/4	479.5	215.8	216		54	47	480	31	
7+62.77	TO	114+55.00	MAINLINE - AGG	10692.2	19.0	3 3/4	22572.5	10157.7	10693		2529	2213	22573	1523	
114+55.00	TO	115+00.00	TAPER - ALT 1	45.0	19.0	3 3/4 TO 3 3/4	95.0	42.8	45	10.6	7	10	95	7	
ENTRANCE GAPS				1104.8										-158	
W MAIN ST. SUBTOTAL								11247.2	11457	24.0	2791	2452	24996	1432	
TOTAL								12047.8	11900	62.2	2984	2628	26777	1495	

40600990											40800050		X0326440	
HMA SIDE ROAD/ ENTRANCE SCHEDULE				WIDTH FRONT FT	WIDTH BACK FT	DEPTH FT	AREA SQ YD	TEMPORARY RAMP SQ YD	INCIDENTAL HOT-MIX ASPHALT SURFACING TON	SURFACE REMOVAL, VARIABLE DEPTH (SPECIAL) SQ YD				
STATION	RT / LT	TYPE	MATERIAL	FT	FT	FT	SQ YD	SQ YD	TON	SQ YD				
5+04.80	LT	WILLIAM ST	HMA	89.9	35.5	13.7	96	19.7	13	96				
9+70.70	RT	MERIDIAN ST	HMA	100.5	70.4	11.3	106	42.4	10	135				
13+65.64	LT	PC	HMA	39.9	11.7	20.0	50	6.7	6	58				
16+13.15	RT	W MAIN ST	HMA	67.6	15.9	15.0	70	8.9	9	70				
17+40.79	RT	BIRKS ST	HMA	59.5	19.7	23.3	103	10.9	13	103				
17+43.51	LT	BIRKS ST	HMA	42.6	22.9	10.7	39	12.7	5	39				
21+53.34	LT	PE	HMA	22.4	10.3	21.0	39	6.7	5	39				
23+94.86	RT	CAMP ST	HMA	48.0	20.9	13.6	53	11.6	7	53				
23+96.77	LT	CAMP ST	HMA	32.0	15.5	13.4	36	8.6	5	36				
25+61.60	LT	PE	HMA	19.5	10.9	10.0	17	6.7	3	17				
25+81.42	RT	PE	HMA	30.7	18.5	10.0	28	6.7	4	28				
26+49.81	RT	PE	HMA	38.7	22.7	10.0	35	6.7	5	35				
28+01.18	LT	CE	HMA	41.1	25.3	21.0	78	6.7	10	78				
30+35.07	LT	KEMBARK ST	HMA	66.2	39.9	13.9	82	22.2	11	82				
30+13.02	RT	KEMBARK ST	HMA	66.0	23.8	11.5	58	13.2	8	58				
31+69.87	LT	PE	HMA	32.2	14.4	12.0	32	6.7	5	32				
36+92.90	RT	TWIN LAKES RD	HMA	87.3	24.2	35.7	222	13.4	28	222				
36+95.88	LT	TWIN LAKES RD	HMA	53.6	17.8	17.2	69	9.9	9	69				
40+18.68	LT	PE	HMA	52.0	27.9	21.0	94	15.5	12	94				
43+50.80	LT	WALDORF ST	HMA	53.6	17.8	17.2	69	9.9	9	69				
46+68.85	LT	PE	HMA	34.1	10.6	11.7	30	6.7	4	30				
49+97.01	LT	HOUCK ST	HMA	68.6	25.9	16.0	85	14.4	11	85				
52+76.83	LT	PE	HMA	39.3	19.3	21.0	69	6.7	9	69				
53+93.50	LT	PE	HMA	31.7	18.6	21.0	59	6.7	8	59				
57+02.86	LT	BRIARWOOD ST	HMA	61.0	23.8	19.2	91	13.2	12	91				
78+48.78	LT	PE	HMA	44.0	18.5	13.9	49	6.7	7	49				
90+72.47	KT	PE	HMA	46.0	16.7	6.9	24	6.7	4	24				
102+13.39	RT	JOYNT RD	HMA	111.9	26.1	34.4	264	14.5	34	264				
104+37.93	LT	FIELDCREST RD	HMA	60.1	21.4	20.0	91	11.9	12	91				
106+33.79	RT	PE	HMA	32.8	19.7	16.6	49	6.7	7	49				
107+18.40	RT	PE	HMA	36.4	19.7	11.2	35	6.7	5	35				
107+36.07	LT	PE	HMA	21.8	6.0	8.0	13	6.7	2	13				
107+86.51	LT	PE	HMA	31.1	19.9	9.3	27	6.7	4	27				
108+40.09	LT	PE	HMA	46.2	35.6	9.3	43	6.7	6	43				
108+68.46	RT	PE	HMA	28.6	24.5	16.0	48	6.7	7	48				
109+46.14	RT	PE	HMA	31.4	19.9	13.4	39	6.7	5	39				
114+66.39	RT	CE	HMA	60.4	24.6	18.2	87	6.7	11	87				
W. MAIN ST. SUBTOTAL								387	335	2516				
TOTAL								387	335	2516				

MODEL: Schedule of Quantities (Sheet)
 FILE NAME: I:\projects\BartlettWest\202002082196 - Main St. Hamstead\OpenRoads Designer\Plan Sheets\005_001-008_SCHEDULE OF QUANTITIES.dgn



USER NAME = ajc01914
 PLOT SCALE = 0.08333317 / in.
 PLOT DATE = 3/26/2024

DESIGNED -
 DRAWN -
 CHECKED -
 DATE -

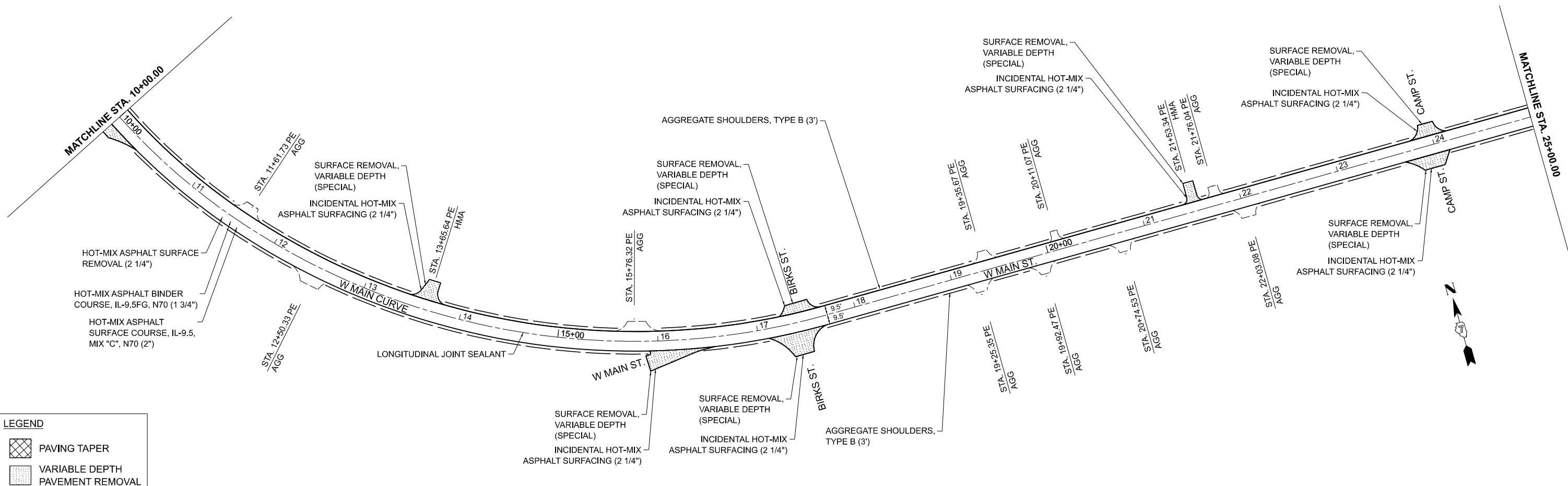
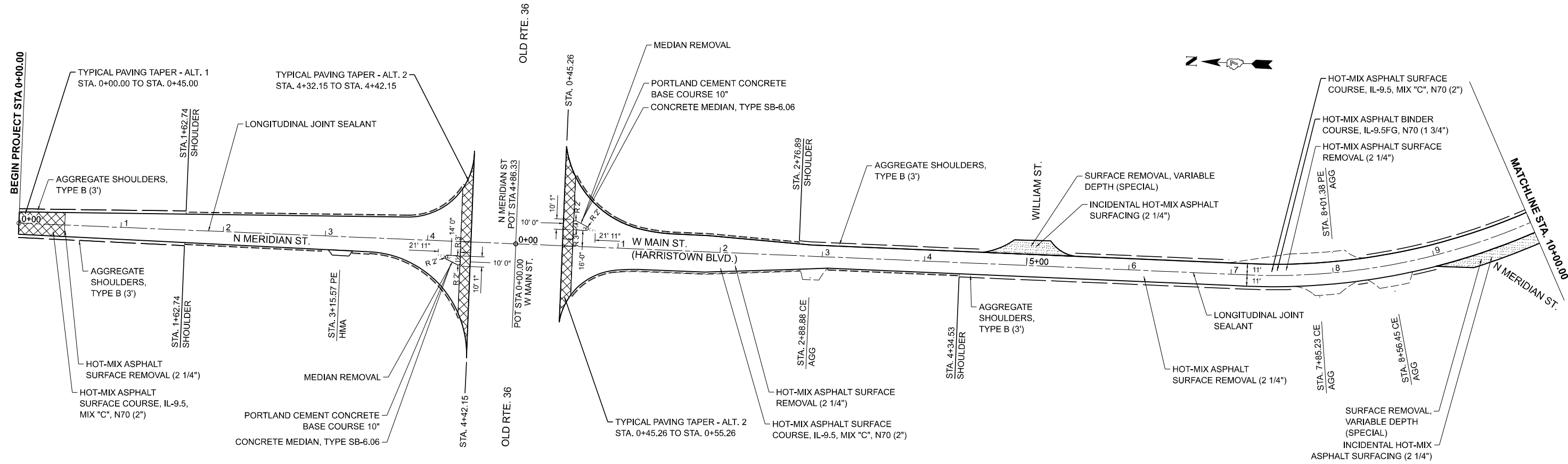
**STATE OF ILLINOIS
 DEPARTMENT OF TRANSPORTATION**

SCHEDULE OF QUANTITIES

SCALE: NO SCALE SHEET 1 OF 2 SHEETS STA. TO STA.

F.A.U. RTE.	SECTION	COUNTY	TOTAL SHEETS	SHEET NO.
7420	(13,14)RS-3	MACON	26	10
CONTRACT NO. 74985				

ILLINOIS FED. AID PROJECT
 Long Section Number



LEGEND

	PAVING TAPER
	VARIABLE DEPTH PAVEMENT REMOVAL

Bartlett & West
 1207 SINCLAIR DRIVE, SUITE 2 - JERSEYVILLE, IL 62052
 PHONE 618-484-4001
 ILLINOIS DESIGN FIRM NO 146005866002
 WWW.BARTLETTWEST.COM

USER NAME =	ajc01914	DESIGNED -		REVISED -	
PLOT SCALE =	0.083333317' / in.	DRAWN -		REVISED -	
PLOT DATE =	3/21/2024	CHECKED -		REVISED -	
		DATE -		REVISED -	

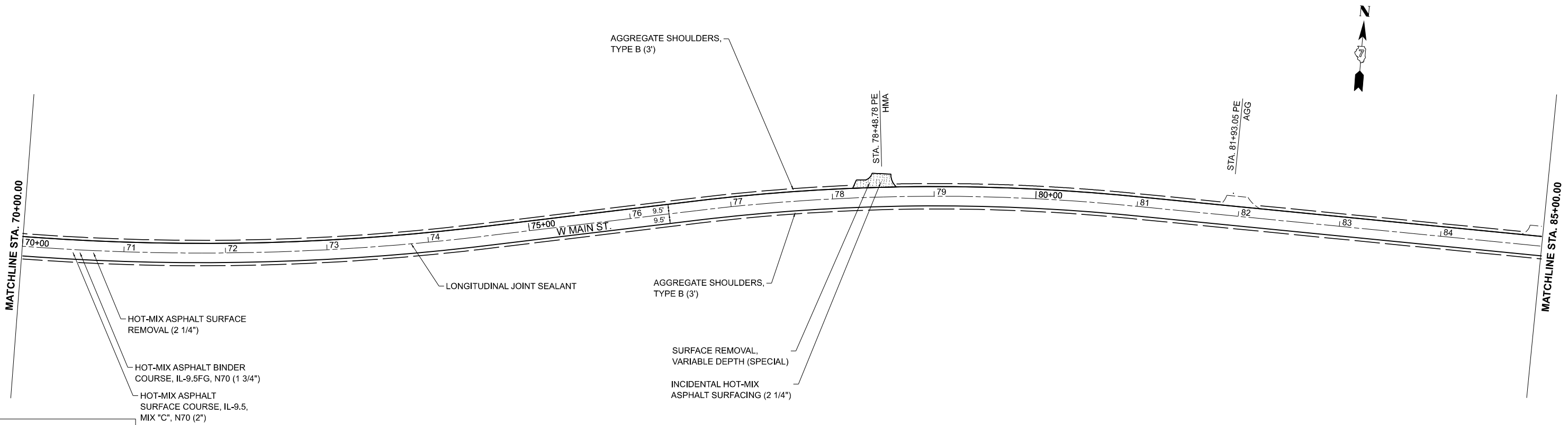
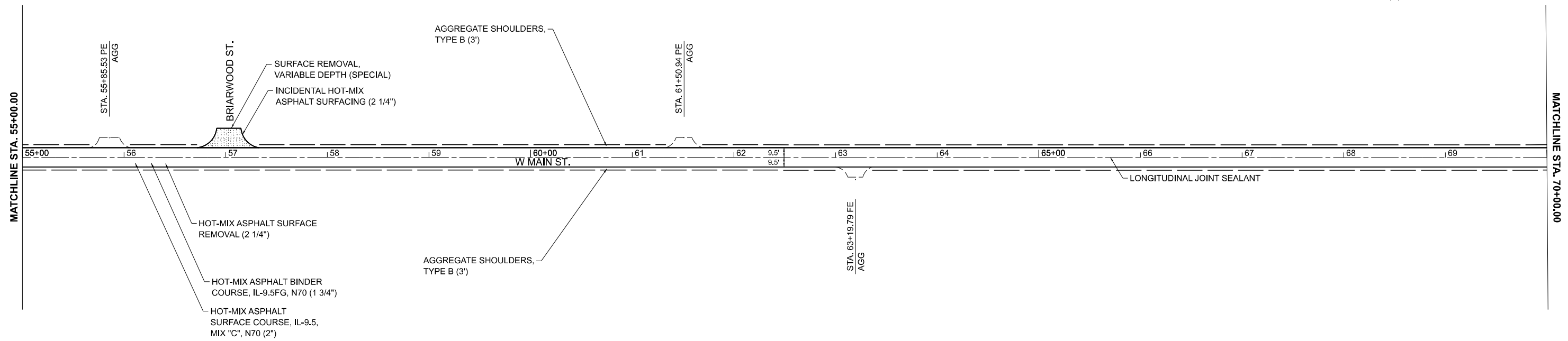
**STATE OF ILLINOIS
 DEPARTMENT OF TRANSPORTATION**

ROADWAY PLANS

SCALE: 1"=50' SHEET 1 OF 4 SHEETS STA. 0+00.00 TO STA. 25+00.00

F.A.U. RTE.	SECTION	COUNTY	TOTAL SHEETS	SHEET NO.
7420	(13,14)RS-3	MACON	26	12
CONTRACT NO. 74985				
ILLINOIS FED. AID PROJECT				

MODEL: 005_jwc_Main_S1_P1=1
 FILE NAME: I:\Roadway\Projects\1314\1314-1314-Harristown\OpenRoads\Drawings\Plan Sheets\005_001_Main_S1_Roadway.dgn



MODEL: 005_xxx_Main_SU_Plan-3
 FILE NAME: I:\Roadway\Projects\1314\1314-RS-3\Drawings\OpenRoads Designer\Plan Sheets\005_003_Main_SU_Roadway.dgn

LEGEND

- PAVING TAPER
- VARIABLE DEPTH PAVEMENT REMOVAL

Bartlett & West
 1207 SINCLAIR DRIVE, SUITE 2 - JERSEYVILLE, IL 62052
 PHONE 618-484-4001
 ILLINOIS DESIGN FIRM NO 15400586-0002
 WWW.BARTLETTWEST.COM

USER NAME = ajc01914	DESIGNED -	REVISED -	
	DRAWN -	REVISED -	
PLOT SCALE = 0.08333317' / in.	CHECKED -	REVISED -	
PLOT DATE = 3/21/2024	DATE -	REVISED -	

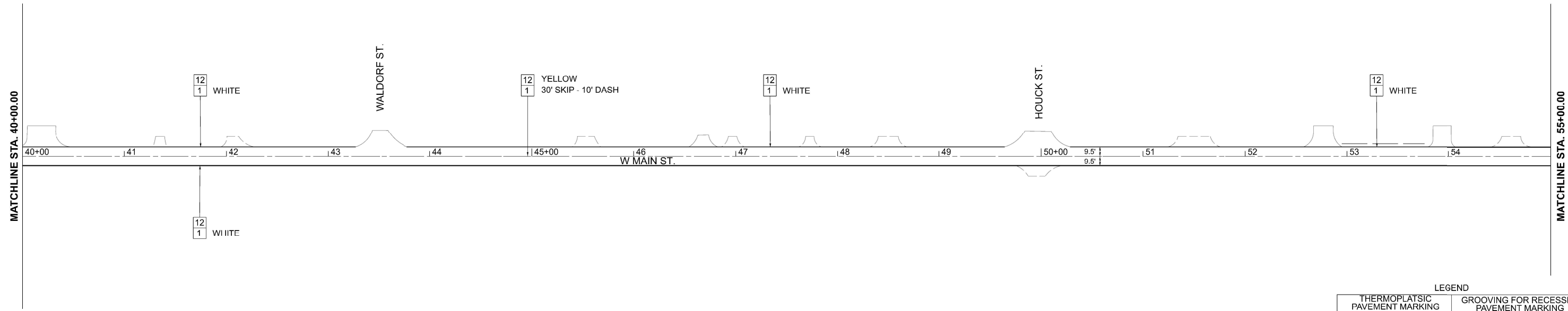
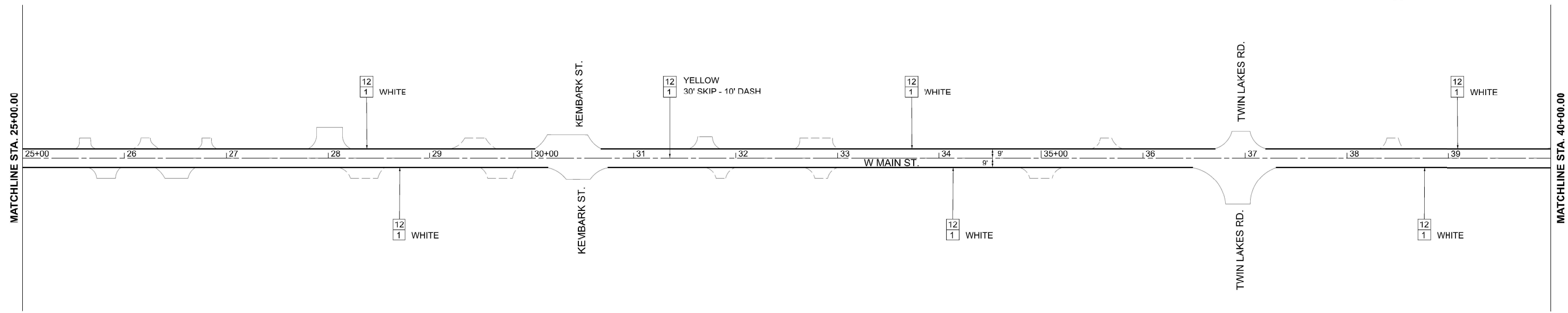
**STATE OF ILLINOIS
DEPARTMENT OF TRANSPORTATION**

ROADWAY PLANS

SCALE: 1"=50' SHEET 3 OF 4 SHEETS STA. 55+00.00 TO STA. 85+00.00

F.A.U. RTE.	SECTION	COUNTY	TOTAL SHEETS	SHEET NO.
7420	(13,14)RS-3	MACON	26	14
CONTRACT NO. 74985				
ILLINOIS FED. AID PROJECT				

MODEL: 008_Main St Pavement Marking 2
 FILE NAME: p:\baltimore\p\20200220\022186_Main St_Hamilton\OpenRoads Designer\Plan Sheets\007_002_Main St_Pavement Marking.dgn



* PAVEMENT MARKINGS ARE SHOWN FOR QUANTITY PURPOSE ONLY.
 CONTRACTOR SHALL MATCH EXISTING PAVEMENT MARKINGS IN THE FIELD

LEGEND	
THERMOPLASTIC PAVEMENT MARKING	GROOVING FOR RECESSED PAVEMENT MARKING
1 LINE 4"	12 5"
2 LINE 6"	13 7"
3 LINE 8"	14 9"
4 LINE 12"	15 13"
5 LINE 24"	16 25"
6 LETTER AND SYMBOLS	17 LETTER AND SYMBOLS

Bartlett & West
 1207 SINCLAIR DRIVE, SUITE 2 - JERSEYVILLE, IL 62052
 PHONE 618-484-4001
 ILLINOIS DESIGN FIRM NO. 14-000558-0002
 WWW.BARTLETTWEST.COM

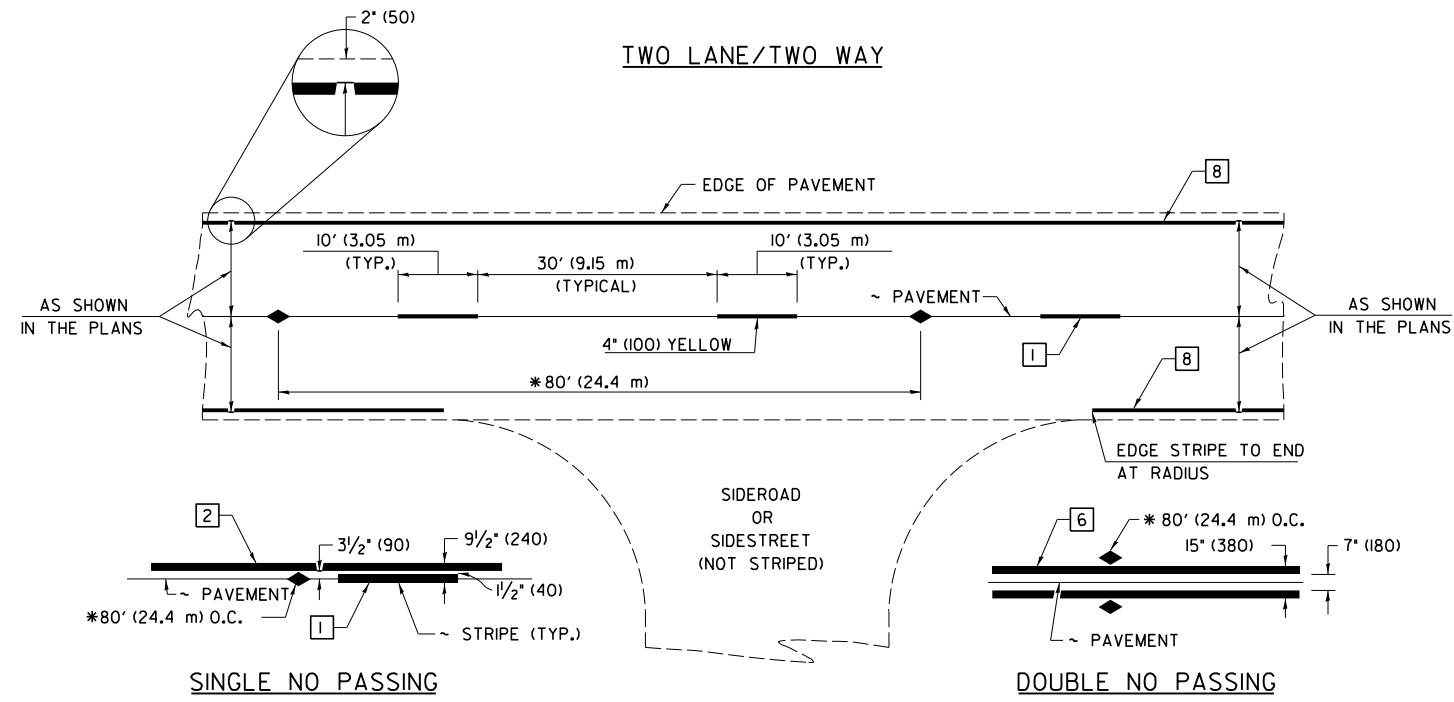
USER NAME =	ajc01914	DESIGNED -	REVISD -
DRAWN -		REVISD -	
PLOT SCALE =	0.08333317' / 1" n.	CHECKED -	REVISD -
PLOT DATE =	3/26/2024	DATE -	REVISD -

**STATE OF ILLINOIS
 DEPARTMENT OF TRANSPORTATION**

PAVEMENT MARKING PLANS

SCALE: 1"=50' SHEET 2 OF 4 SHEETS STA. 25+00.00 TO STA. 55+00.00

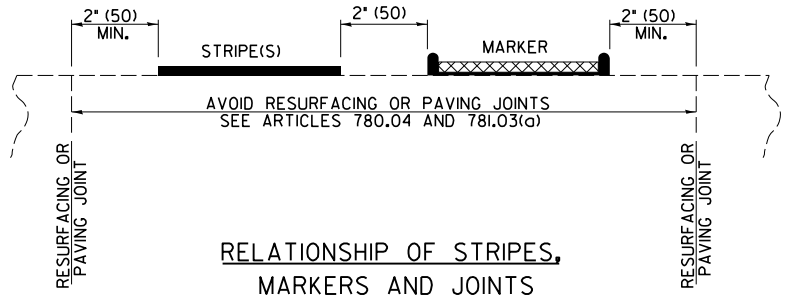
F.A.U. RTE.	SECTION	COUNTY	TOTAL SHEETS	SHEET NO.
7420	(13,14)RS-3	MACON	26	17
				CONTRACT NO. 74985
		ILLINOIS	FED. AID PROJECT	



* REDUCE TO 40' (12.2 m) O.C. ON CURVES WITH POSTED OR ADVISORY SPEEDS OF 45 mph (70 km/h) OR LESS.

PAVEMENT MARKING LEGEND

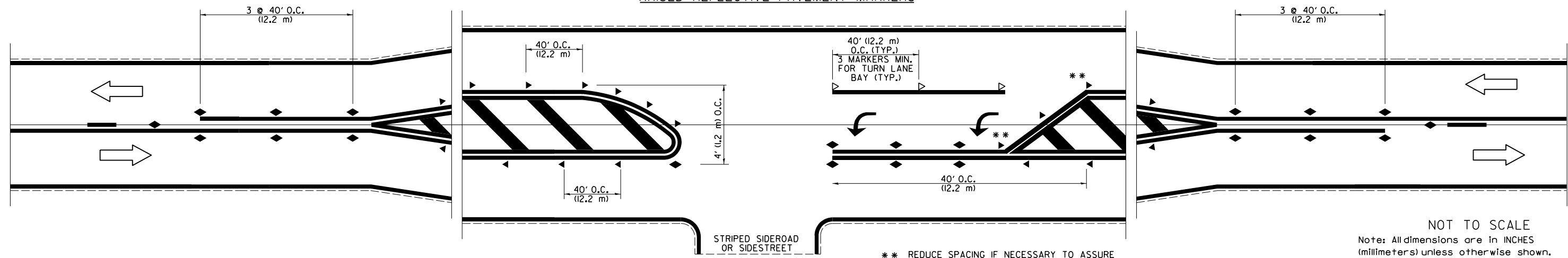
- 1 4" (100) SKIP-DASH (YELLOW)
 - 2 4" (100) SOLID (YELLOW)
 - 3 12" (300) DIAGONAL (YELLOW)
 - 4 4" (100) DOUBLE YELLOW (NARROW)
 - 5 12" (300) SOLID WHITE
 - 6 4" (100) DOUBLE YELLOW (WIDE)
 - 7 6" (150) SKIP-DASH (WHITE)
 - 8 4" (100) SOLID (WHITE)
 - 9 12" (300) DIAGONAL (WHITE)
 - 10 6" (150) SOLID (WHITE)
 - 11 24" (600) STOP BAR (WHITE)
 - 12 8" (200) SOLID (WHITE)
 - 13 4" (100) PARKING WHITE
-



TYPICAL PAVEMENT MARKERS LEGEND

- ◆ TWO-WAY AMBER MARKER
- ▶ ONE-WAY AMBER MARKER
- ▷ ONE-WAY CRYSTAL MARKER

RAISED REFLECTIVE PAVEMENT MARKERS



NOT TO SCALE
Note: All dimensions are in INCHES (millimeters) unless otherwise shown.

DISTRICT 7 DETAIL NO. 7800001

USER NAME =	DESIGNED -	REVISED -
DRAWN -	REVISOR -	
CHECKED -	REVISOR -	
DATE -	REVISOR -	

STATE OF ILLINOIS
DEPARTMENT OF TRANSPORTATION

PAVEMENT MARKING AND RAISED REFLECTIVE PAVEMENT MARKERS
(RURAL & URBAN APPLICATIONS)

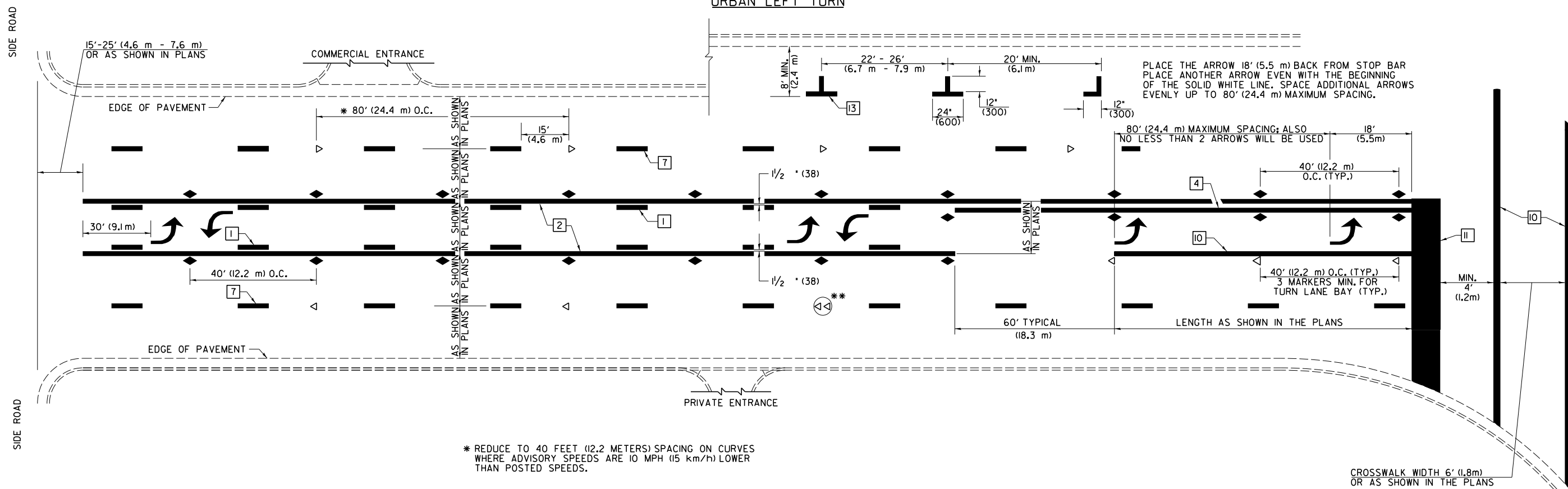
F.A.U. RTE.	SECTION	COUNTY	TOTAL SHEETS	SHEET NO.
7420	(13,14)RS-3	MACON	26	20
CONTRACT NO. 74985				

SCALE: SHEET 1 OF 4 SHEETS STA. TO STA.

ILLINOIS FED. AID PROJECT
Long Section Number

MODEL: 08_D7_Sdr 78000001 - Page 1 (Sheet)
FILE NAME: I:\Projects\78000001\78000001.dwg
PLOT DATE: 3/21/2024

URBAN LEFT TURN



* REDUCE TO 40 FEET (12.2 METERS) SPACING ON CURVES WHERE ADVISORY SPEEDS ARE 10 MPH (15 km/h) LOWER THAN POSTED SPEEDS.

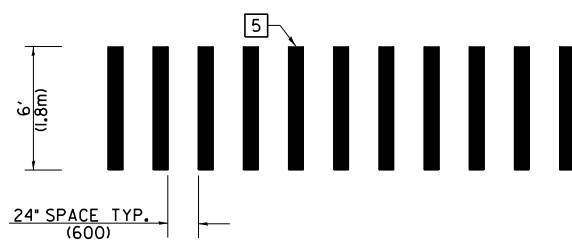
** DOUBLE LANE LINE MARKERS SHALL BE SPECIFIED AND SPACED AS SHOWN IN HIGHWAY STANDARD 781001 FOR MULTI-LANE DIVIDED AND UNDIVIDED HIGHWAYS.

PAVEMENT MARKING LEGEND

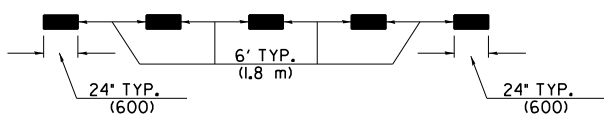
- 1 4" (100) SKIP-DASH (YELLOW)
- 2 4" (100) SOLID (YELLOW)
- 3 12" (300) DIAGONAL (YELLOW)
- 4 4" (100) DOUBLE YELLOW (NARROW)
- 5 12" (300) SOLID WHITE
- 6 4" (100) DOUBLE YELLOW (WIDE)
- 7 6" (150) SKIP-DASH (WHITE)
- 8 4" (100) SOLID (WHITE)
- 9 12" (300) DIAGONAL (WHITE)
- 10 6" (150) SOLID (WHITE)
- 11 24" (600) STOP BAR (WHITE)
- 12 8" (200) SOLID (WHITE)
- 13 4" (100) PARKING WHITE

GENERAL NOTES

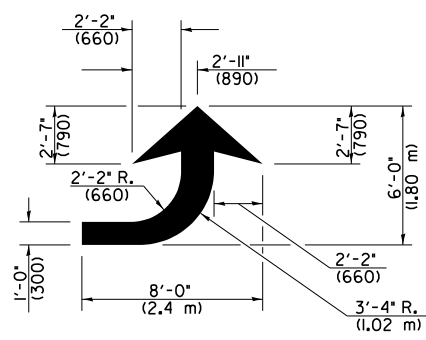
1. TURN ARROW PAIRS SHALL BE PLACED AT 250' (75 m) INTERVALS AND SHALL BE EVENLY SPACED BETWEEN BOTH ENDS OF THE BIDIRECTIONAL LEFT TURN LANE. USE A MINIMUM OF TWO PAIRS PER BLOCK.
2. THE SOLID YELLOW PAVEMENT MARKINGS 2 SHOULD GENERALLY START OR END NEAR THE RADIUS POINT OF EACH STREET RETURN EXCEPT WHERE ONE OR BOTH ENDS WOULD INCLUDE STOP BARS.
3. THE SKIP-DASH PAVEMENT MARKINGS 1 OR 7 SHOULD BE CENTERED BETWEEN BOTH ENDS OF EACH CITY BLOCK AND SHALL BE PLACED SO THEY LINE UP ACROSS FROM EACH OTHER.
4. USE LARGE ARROW SIZE FOR BOTH RURAL AND URBAN LOCATIONS. (SEE SECTION 780 FOR SYMBOLS TABLE)
5. LANE LINE EXTENSIONS SHALL BE THE SAME COLOR AND WIDTH AS THE LANE LINE BEING EXTENDED.
6. ALL WHITE SKIP-DASH LINES SHALL BE 6" IN WIDTH.



CROSSWALK DETAIL (DECATUR CITY LIMITS ONLY)

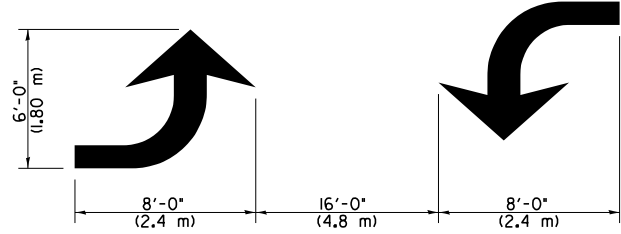


LANE LINE EXTENSIONS



LEFT ARROW

REVERSE FOR RIGHT ARROW
AREA = 15.6 SQ. FT. (1.47 m²)
(WHITE)



TYPICAL DOUBLE TURN ARROWS (WHITE)

NOT TO SCALE

Note: All dimensions are in INCHES (millimeters) unless otherwise shown.

DISTRICT 7 DETAIL NO. 7800001

USER NAME =	DESIGNED -	REVISED -
ajc01914	DRAWN -	REVISED -
PLOT SCALE = 0.08333317" / in.	CHECKED -	REVISED -
PLOT DATE = 3/21/2024	DATE -	REVISED -

STATE OF ILLINOIS
DEPARTMENT OF TRANSPORTATION

PAVEMENT MARKING AND RAISED REFLECTIVE PAVEMENT MARKERS
(RURAL & URBAN APPLICATIONS)

SCALE: SHEET 2 OF 4 SHEETS STA. TO STA.

F.A.U. RTE.	SECTION	COUNTY	TOTAL SHEETS	SHEET NO.
7420	(13,14)RS-3	MACON	26	21
CONTRACT NO. 74985				
ILLINOIS FED. AID PROJECT				

Long Section Number

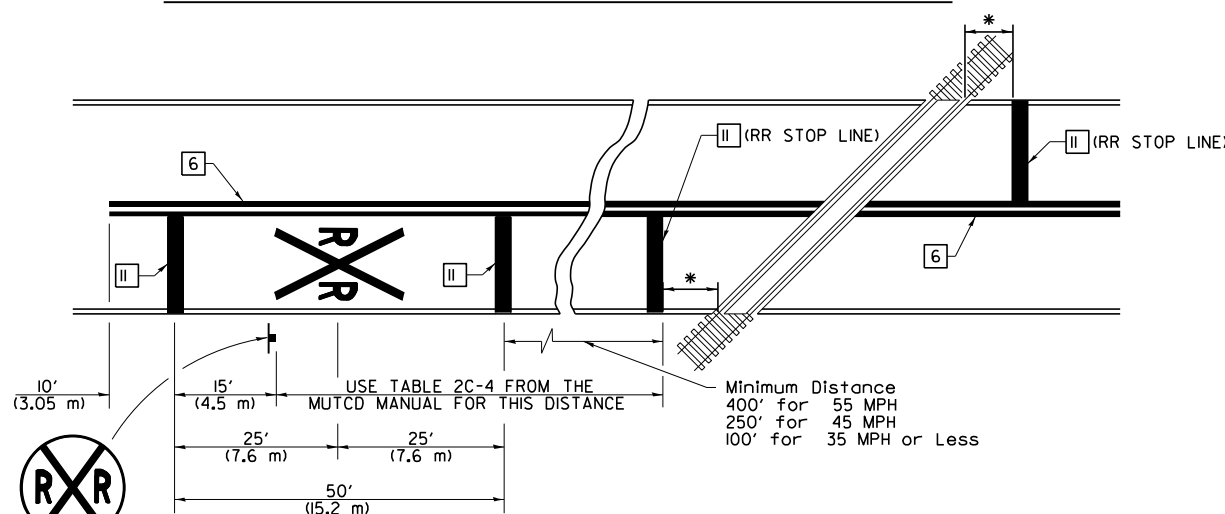
MODEL: 08_D7_Sel 78000001 - Page 2 (Sheet)
FILE NAME: I:\Baltimore\2020\202002082188-Hdr\St\Harris\OpenRoads\Design\Plan Sheets\08_D7_Standard_78000001.dgn

SUPPLEMENTAL PAVEMENT MARKING TREATMENT FOR RAILROAD-HIGHWAY GRADE CROSSING

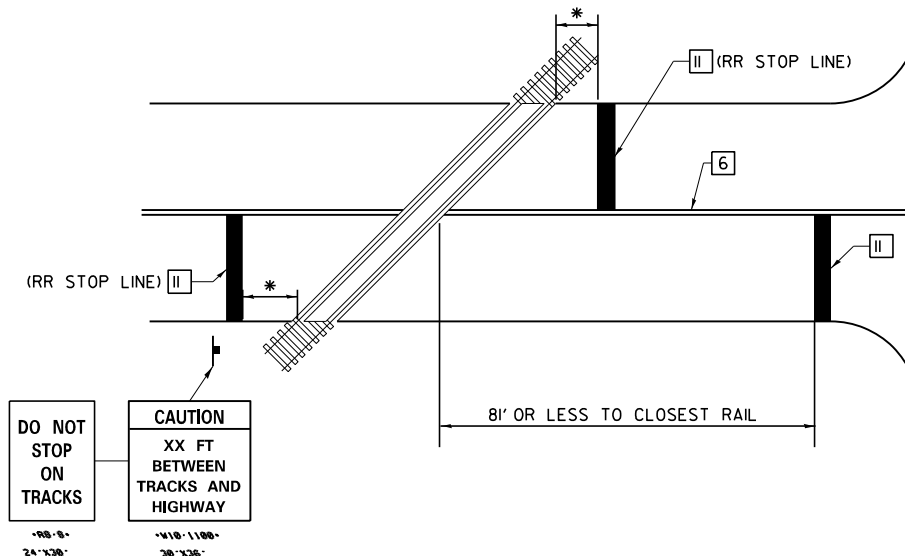
PAVEMENT MARKING LEGEND

- 1 4" (100) SKIP-DASH (YELLOW)
 - 2 4" (100) SOLID (YELLOW)
 - 3 12" (300) DIAGONAL (YELLOW)
 - 4 4" (100) DOUBLE YELLOW (NARROW)
 - 5 12" (300) SOLID WHITE
 - 6 4" (100) DOUBLE YELLOW (WIDE)
 - 7 6" (150) SKIP-DASH (WHITE)
 - 8 4" (100) SOLID (WHITE)
 - 9 12" (300) DIAGONAL (WHITE)
 - 10 6" (150) SOLID (WHITE)
 - 11 24" (600) STOP BAR (WHITE)
 - 12 8" (200) SOLID (WHITE)
 - 13 4" (100) PARKING WHITE
-

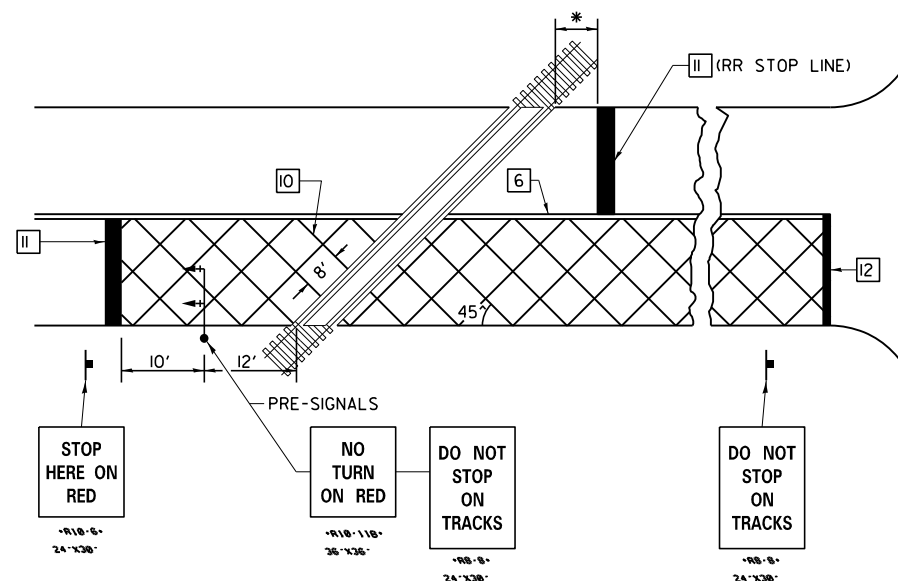
PAVEMENT MARKINGS AT RAILROAD-HIGHWAY GRADE CROSSING



RAILROAD CROSSING WITH NON-SIGNALIZED INTERSECTION



RAILROAD CROSSING WITH INTERCONNECT AND PRE-SIGNALS



NOTES

THE TRAVERSE SPREAD OF THE "X" MAY VARY ACCORDING TO LANE WIDTH.

ON MULTI-LANE ROADS, THE STOP LINES SHALL EXTEND ACROSS ALL APPROACH LANES AND SEPARATE R X R SYMBOLS SHALL BE PLACED ADJACENT TO EACH OTHER IN EACH LANE.

WHEN THE PAVEMENT MARKING SYMBOL IS USED, A PORTION OF THE SYMBOL SHOULD BE LOCATED DIRECTLY ADJACENT TO THE ADVANCE WARNING SIGN (W10-1) AS PLACED BY TABLE II-1, CONDITION B OF THE MUTCD.

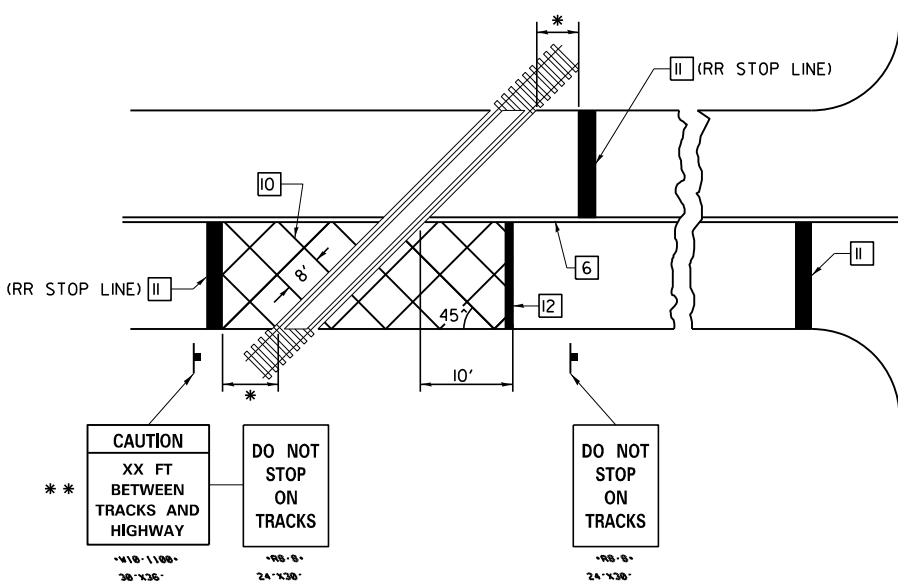
GENERAL NOTES

- SUPPLEMENTAL PAVEMENT MARKINGS TO BE INSTALLED ONLY ON APPROACHES TO INTERSECTIONS CONTROLLED BY TRAFFIC SIGNALS WHICH ARE INTERCONNECTED WITH THE RAILROAD WARNING SIGNALS.
- EXTEND PAVEMENT MARKINGS TO THE INTERSECTION ONLY WHERE PRE-SIGNALS ARE USED.
- WHEN PEDESTRIAN SIGNALS ARE PRESENT WITH INTERCONNECTED SIGNALS, WARNING SIGN W10-1101 (18"x24") SHALL BE PLACED NEAR EACH PEDESTRIAN SIGNAL HEAD. COUNTDOWN PEDESTRIAN SIGNAL HEADS SHALL NOT BE UTILIZED ALONG WITH INTERCONNECTED SIGNALS.
- PLEASE REFER TO THE IDOT BUREAU OF OPERATION MEMO OPS T-06 DATED DECEMBER 1, 2020 FOR ADDITIONAL INFORMATION

CAUTION
WALK TIME SHORTENED WHEN TRAIN APPROACHES

- * 15' FROM NEAR RAIL OR 8' FROM AND PARALLEL TO GATE IF PRESENT
- ** WARNING SIGN W10-1100 SHALL BE USED AS AN INTERIM MEASURE AT INTERCONNECTED SIGNAL LOCATIONS WHERE PRE-SIGNALS ARE TO BE INSTALLED IN THE FUTURE. THIS SIGN SHALL BE REMOVED WHEN THE PRE-SIGNALS ARE INSTALLED AND THE PAVEMENT MARKINGS ARE EXTENDED TO THE INTERSECTION.

RAILROAD CROSSING WITH INTERCONNECT ONLY



NOT TO SCALE
Note: All dimensions are in INCHES (millimeters) unless otherwise shown.

DISTRICT 7 DETAIL NO. 7800001

MODEL: 08_07_2017 18000001 - Page 4 (Sheet) FILE NAME: I:\Bids\2022\20220821\85-Main St. Harrisburg\OpenRoads Designer\Plan Sheets\08_D7_Standard_7800001.dgn

USER NAME =	ajc01914	DESIGNED -		REVISED -	
DRAWN -		CHECKED -		REVISED -	
PLOT SCALE =	0.083333317 / in.	DATE -		REVISED -	
PLOT DATE =	3/21/2024				

STATE OF ILLINOIS
DEPARTMENT OF TRANSPORTATION

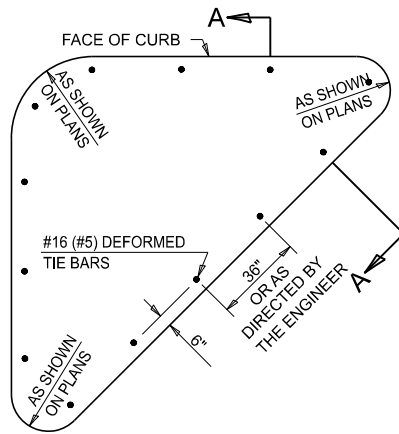
PAVEMENT MARKING AND RAISED REFLECTIVE PAVEMENT MARKERS
(RURAL & URBAN APPLICATIONS)

SCALE: SHEET 4 OF 4 SHEETS STA. TO STA.

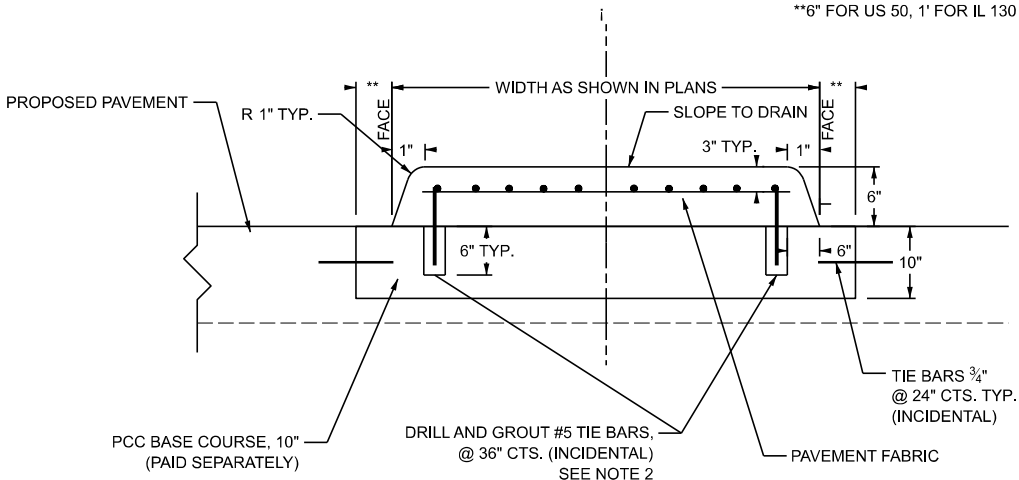
F.A.U. RTE.	SECTION	COUNTY	TOTAL SHEETS	SHEET NO.
7420	(13,14)RS-3	MACON	26	23
CONTRACT NO. 74985				
ILLINOIS FED. AID PROJECT				

Long Section Number

DETAIL OF CONCRETE MEDIAN, TYPE SB (DOWELLED)



PLAN OF CORNER ISLAND



**6" FOR US 50, 1' FOR IL 130

NOTES

1. CONCRETE MEDIAN, TYPE SB (DOWELLED) SHALL BE CONSTRUCTED IN ACCORDANCE WITH THE APPLICABLE PORTIONS OF STATE STANDARD 606301 AND SECTION 606 OF THE STANDARD SPECIFICATIONS.
2. SECTION G-G SHALL BE THE SAME AS SHOWN IN STANDARD 606301.
3. DOWEL BARS @ 36" CTS. OR AS DIRECTED BY THE ENGINEER.

MODEL: 10_D7_PCC Island Detail.dwg (Sheet)
 FILE NAME: p:\Bentley\Projects\2020\20202082195-Main St. Hardaway\OpenRoads Designer\Plan Sheets\10_D7_Concrete Median_Type SB (Dowelled).dgn

USER NAME =	ajc01914	DESIGNED -	REVISED -
DRAWN -		REVISIONS -	
PLOT SCALE =	0.08333317 / in.	CHECKED -	REVISED -
PLOT DATE =	3/21/2024	DATE -	REVISED -

**STATE OF ILLINOIS
DEPARTMENT OF TRANSPORTATION**

CONCRETE MEDIAN (DOWELLED) DETAILS

SCALE: SHEET 1 OF 1 SHEETS STA. TO STA.

F.A.U. RTE.	SECTION	COUNTY	TOTAL SHEETS	SHEET NO.
7420	(13,14)RS-3	MACON	26	26
CONTRACT NO. 74985				
ILLINOIS		FED. AID PROJECT		

Long Section Number