

STATE OF ILLINOIS
DEPARTMENT OF TRANSPORTATION

F.A.I. RTE.	SECTION	COUNTY	TOTAL SHEETS	SHEET NO.
70	D7 JOINT REPAIRS 2024-1	CLARK	6	1
		ILLINOIS	CONTRACT NO. 74A65	

FOR INDEX OF SHEETS, SEE SHEET NO. 2

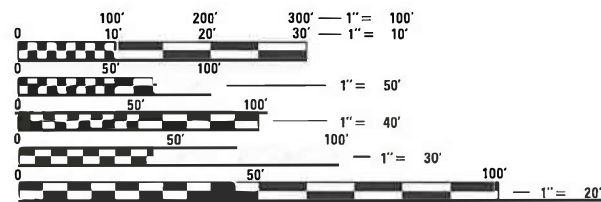
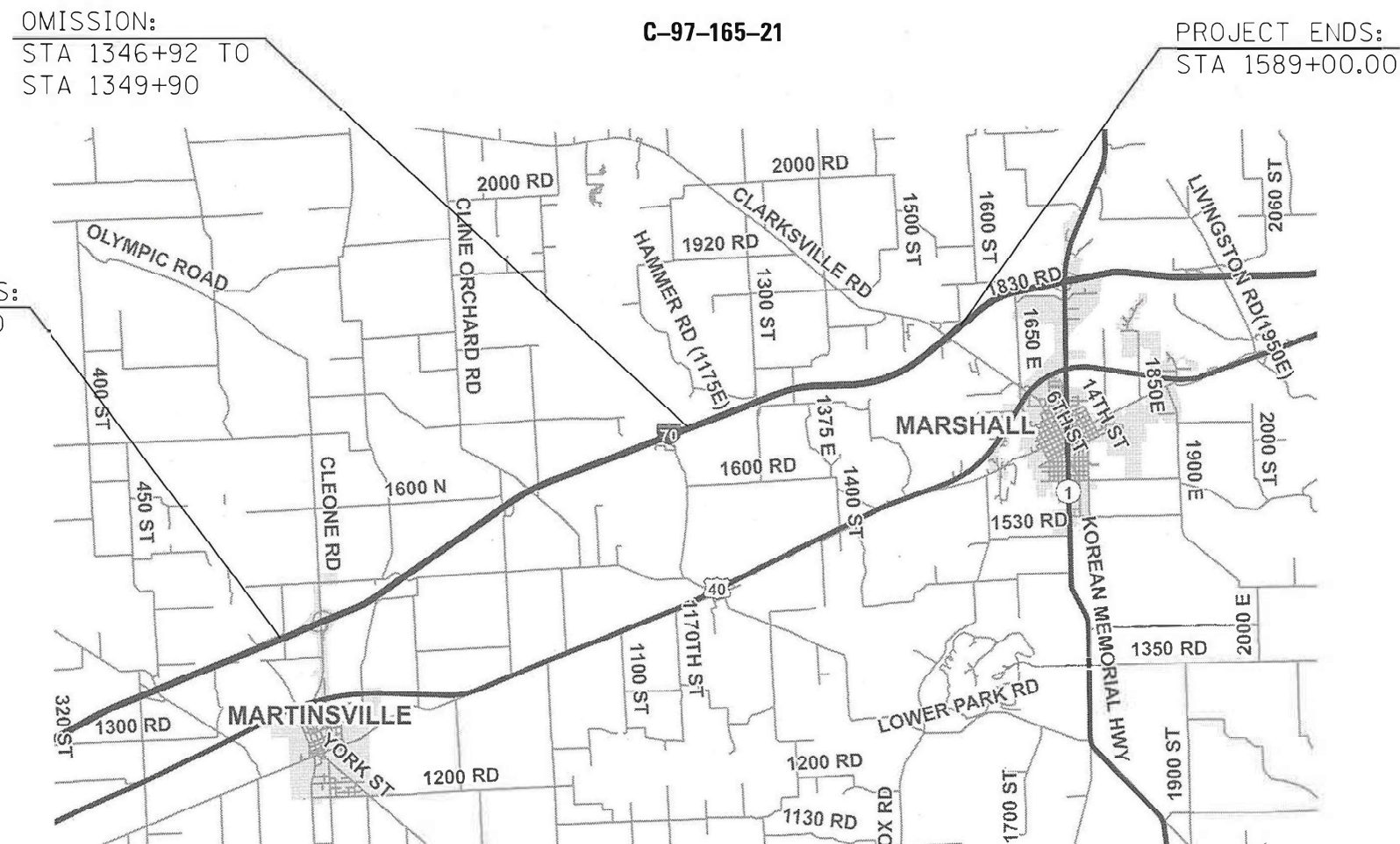
ADT= 12,800 (2021)

STATION EQUATION
STA 1138+61.46 BK=
STA 1109+29.90 AH

PROPOSED HIGHWAY PLANS

FAI ROUTE 70 (I-70)
SECTION D7 JOINT REPAIRS 2024-1
PROJECT NHPP-KWMO(620)
MICROSURFACING JOINT REPAIR
CLARK COUNTY

D-97-096-21



FULL SIZE PLANS HAVE BEEN PREPARED USING STANDARD ENGINEERING SCALES. REDUCED SIZED PLANS WILL NOT CONFORM TO STANDARD SCALES. IN MAKING MEASUREMENTS ON REDUCED PLANS, THE ABOVE SCALES MAY BE USED.

J.U.L.I.E.
JOINT UTILITY LOCATION INFORMATION FOR EXCAVATORS
1-800-892-0123
OR 811

PROJECT ENGINEER: BRIAN LEWIS
PROJECT MANAGER: JACKIE WILLENBURG

GROSS LENGTH = 57,198 FT. = 10.83 MILES
NET LENGTH = 56,900 FT. = 10.78 MILE

CONTRACT NO. 74A65

STATE OF ILLINOIS
DEPARTMENT OF TRANSPORTATION

SUBMITTED MARCH 18 20 24
Jeffrey P. Myerka REGIONAL ENGINEER
May 10, 2024
[Signature]
ENGINEER OF DESIGN AND ENVIRONMENT
May 10, 2024
[Signature]
DIRECTOR OF HIGHWAYS PROJECT IMPLEMENTATION

PRINTED BY THE AUTHORITY
OF THE STATE OF ILLINOIS

GENERAL NOTES

THE PROPOSED WORK IS LOCATED IN CLARK COUNTY ON I-70 0.7 MILES E OF MARTINSVILLE INTERCHANGE TO 0.8 E OF CLARKSVILLE RD.

THE WORK IN THIS SECTION CONSISTS OF PAVEMENT MARKING REMOVAL AND REPLACEMENT, RAISED REFLECTIVE PAVEMENT MARKER REMOVAL AND REPLACEMENT, MICRO-SURFACING, TRAFFIC CONTROL, AND ANY OTHER WORK NECESSARY TO COMPLETE THIS SECTION PER THE STANDARD SPECIFICATIONS.

THERE WILL BE NO CRACK/JOINT SEALING, BUMP REMOVAL, OR SCRATCH COAT FILLING ON THIS PROJECT.

PAVEMENT MARKING SHALL BE APPLIED IN ACCORDANCE WITH SECTION 780 OF THE STANDARD SPECIFICATIONS.

ALL SHORT-TERM PAVEMENT MARKING SHALL BE TAPE. THE TAPE SHALL BE PLACED BEYOND THE LIMITS OF THE MICRO-SURFACING ALTERNATING ON EITHER SIDE OF THE ROADWAY CENTERLINE.

THE RAISED REFLECTIVE PAVEMENT MARKERS SHALL BE PUT IN AS DOUBLE MARKERS AS SHOWN ON STANDARD 781001-04.

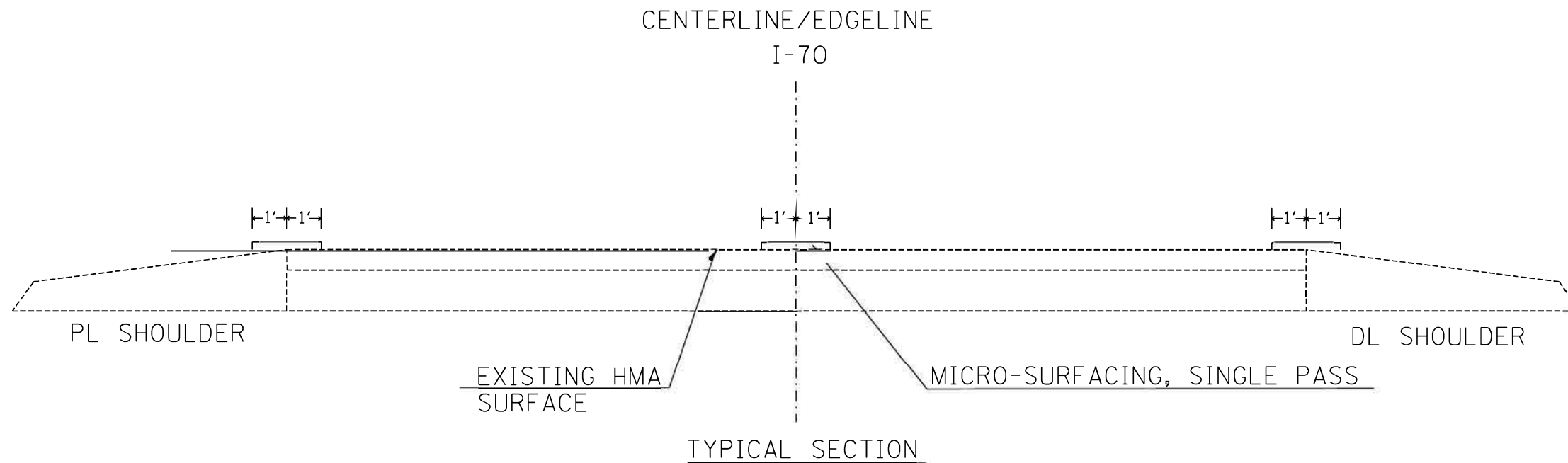
BITUMINOUS MATERIAL (TACK COAT) .025 LBS/SQ FT

INDEX OF SHEETS

SHEET NO.	ITEM
1	COVER SHEET
2	INDEX OF SHEETS, HIGHWAY STANDARDS & GENERAL NOTES
3	SUMMARY OF QUANTITIES
4	SCHEDULE OF QUANTITIES
5-6	DISTRICT DETAILS

THE FOLLOWING STANDARDS ARE A PART OF THESE PLANS AND ARE INCLUDED FOLLOWING THE LAST NUMBERED SHEET OF THE PLANS.

STD. NO.	DESCRIPTION
000001-08	STANDARD SYMBOLS, ABBREVIATIONS, AND PATTERNS
001006	DECIMAL OF AN INCH AND OF A FOOT
701101-05	OFF-ROAD OPERATIONS, MULTILANE, 15' TO 24" FROM PAVEMENT ENDGE
701106-02	OFF-ROAD OPERATIONS, MULTILANE, MORE THAN 15' AWAY
701400-12	APPROACH TO LANE CLOSURE, FREEWAY/EXPRESSWAY
701406-13	LANE CLOSURE, FREEWAY / EXPRESSWAY, DAY OPERATIONS ONLY
701411-09	LANE CLOSURE, MULTILANE, AT ENTRANCE OR EXIT RAMP, FOR SPEEDS >= 45 MPH
701901-09	TRAFFIC CONTROL DEVICES
780001-05	TYPICAL PAVEMENT MARKINGS
781001-04	TYPICAL APPLICATIONS PAISED REFLECTIVE PAVEMENT MARKERS



REV. - MS

MODEL: D:\default
 FILE: M:\asf\p\illinois\dot\office\dot\dot\Project\74A65\CADD\3\I-70\74A65-810-gemote.dgn

USER NAME = jessica.hille	DESIGNED -	REVISED -	STATE OF ILLINOIS DEPARTMENT OF TRANSPORTATION	INDEX OF SHEETS AND GENERAL NOTES				F.A.I. RTE: 70	SECTION D7 JOINT REPAIRS 2024-1	COUNTY CLARK	TOTAL SHEETS 6	SHEET NO. 2
PLOT SCALE = 40.0000' / in.	DRAWN -	REVISED -		SCALE:	SHEET	OF	SHEETS	STA.	TO	STA.	CONTRACT NO. 74A65	
PLOT DATE = 3/21/2024	CHECKED -	REVISED -		ILLINOIS FED. AID PROJECT								
	DATE -	REVISED -										

SCHEDULE OF QUANTITIES

LOCATION	STATION	STATION	LENGTH (FT)	NUMBER OF CENTERLINE AND EDGELINE JOINTS TO MICRO-SURFACE	BITUMINOUS MATERIALS (TACK COAT)	SHORT TERM PAVEMENT MARKING	WORK ZONE PAVEMENT MARKING REMOVAL	THERMOPLASTIC LINE 5"	RAISED REFLECTIVE PAVEMENT MARKER	RAISED REFLECTIVE PAVEMENT MARKER REMOVAL	PAVEMENT MARKING REMOVAL	MICRO-SURFACING, SINGLE PASS, MIX D
					POUND	FOOT	SQ. FT.	FOOT	EACH	EACH	SQ. FT.	SQ. YD.
EB	1046+34.00	TO 1138+61.00	9,227.0	3	1,338	1,291.8	430.6	19,835.8	230.7	230.7	9,912.9	5,943.6
WB	1046+34.00	TO 1138+61.00	9,227.0	3	1,338	1,291.8	430.6	19,825.8	230.7	230.7	9,912.9	5,945.8
STATION EQ:	1138+61.46	= 1109+29.90	-	-	-	-	-	-	-	-	-	-
EB	1109+30.00	TO 1346+92.00	23,762.0	3	3,565	3,326.7	1,108.9	53,464.5	594.1	594.1	26,732.3	15,841.3
WB	1109+30.00	TO 1346+92.00	23,762.0	3	3,565	3,326.7	1,108.9	53,464.5	594.1	594.1	26,732.3	15,841.3
BRIDGE OMISSION	1346+92.00	TO 1349+90.00	-	-	-	-	-	-	-	-	-	-
EB	1349+90.00	TO 1589+00.00	23,910.0	3	3,587	3,347.4	1,115.8	53,797.5	597.8	597.8	26,898.8	15,940.0
WB	1349+90.00	TO 1589+00.00	23,910.0	3	3,587	3,347.4	1,115.8	53,797.5	597.8	597.8	26,898.8	15,940.0
TOTALS			113798.0		16980	15932	5311	254186	2845	2845	127088	75452

MODEL: P:\default
 FILE NAME: p:\project-aw-bead\paw.com\P\I\DOT\Documents\DOT Office\Dir\dir_7\Project\74A65\CADD\DATA\CAD\Sheet\74A65-SHSchedule.qxd

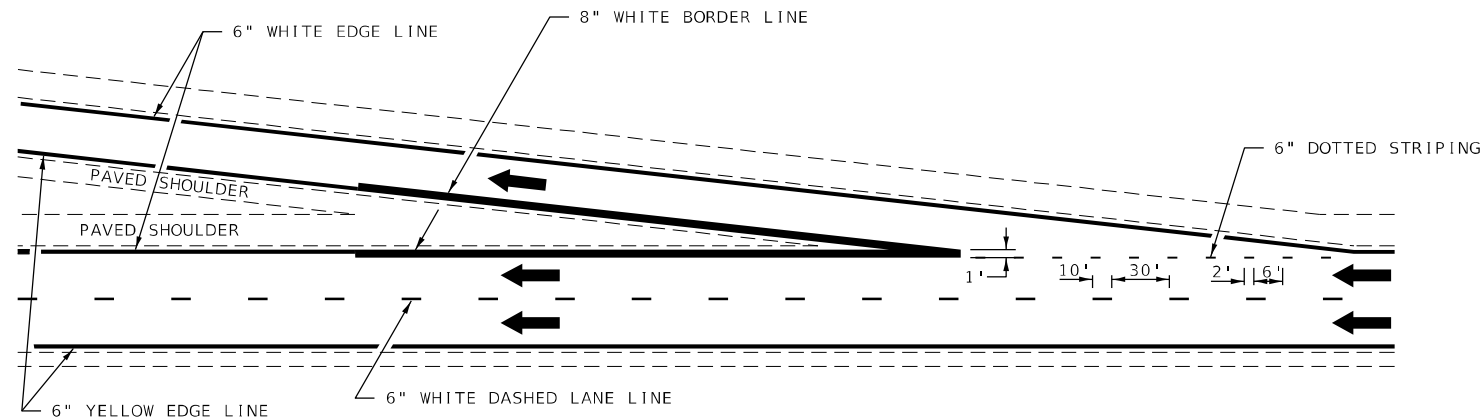
USER NAME = jessica.hille	DESIGNED -	REVISED -
	DRAWN -	REVISED -
PLOT SCALE = 100,0000 ' / in.	CHECKED -	REVISED -
PLOT DATE = 3/21/2024	DATE -	REVISED -

**STATE OF ILLINOIS
DEPARTMENT OF TRANSPORTATION**

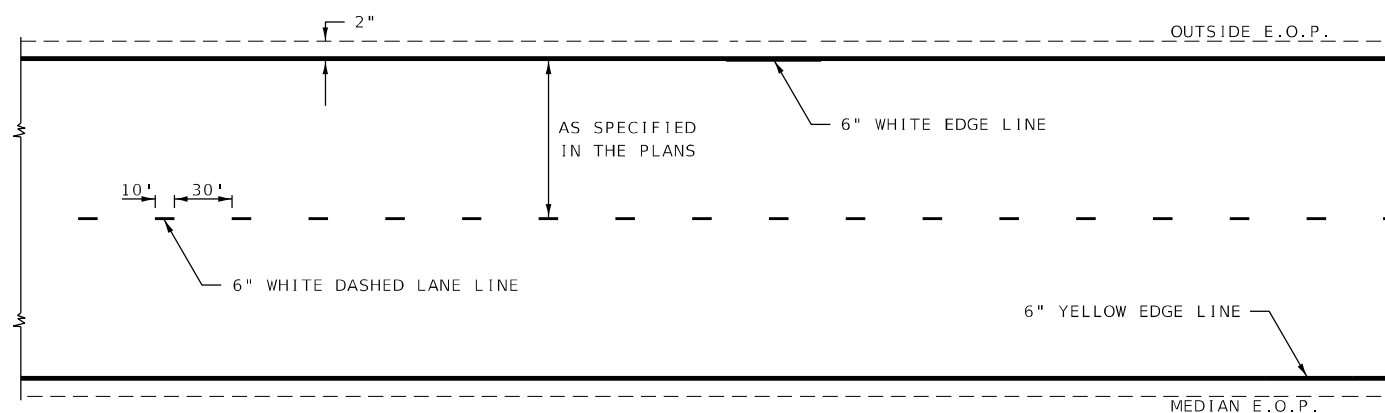
SCHEDULE OF QUANTITIES

SCALE: SHEET OF SHEETS STA. TO STA.

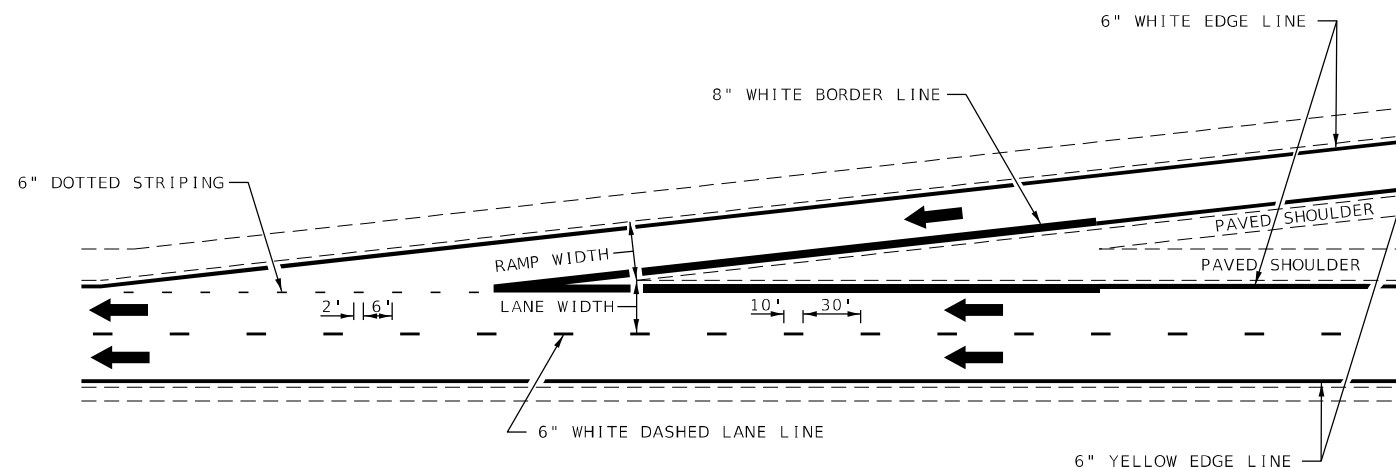
F.A.I. RTE.	SECTION	COUNTY	TOTAL SHEETS	SHEET NO.
70	D7 JOINT REPAIRS 2024-1	CLARK	6	4
CONTRACT NO. 74A65				
ILLINOIS		FED. AID PROJECT		



TYPICAL EXIT RAMP MARKING



TYPICAL CENTERLINE & EDGELINE MARKINGS



TYPICAL ENTRANCE RAMP MARKING

NOT TO SCALE

MODEL: Default
FILE: \\mari... \public\aw_bentley.com\PIV\DOT\Documents\DOT_Offices\Director_7\Projects\74A65\CADD\DATA\CAD\Sheet\74A65-5-Plan.dgn

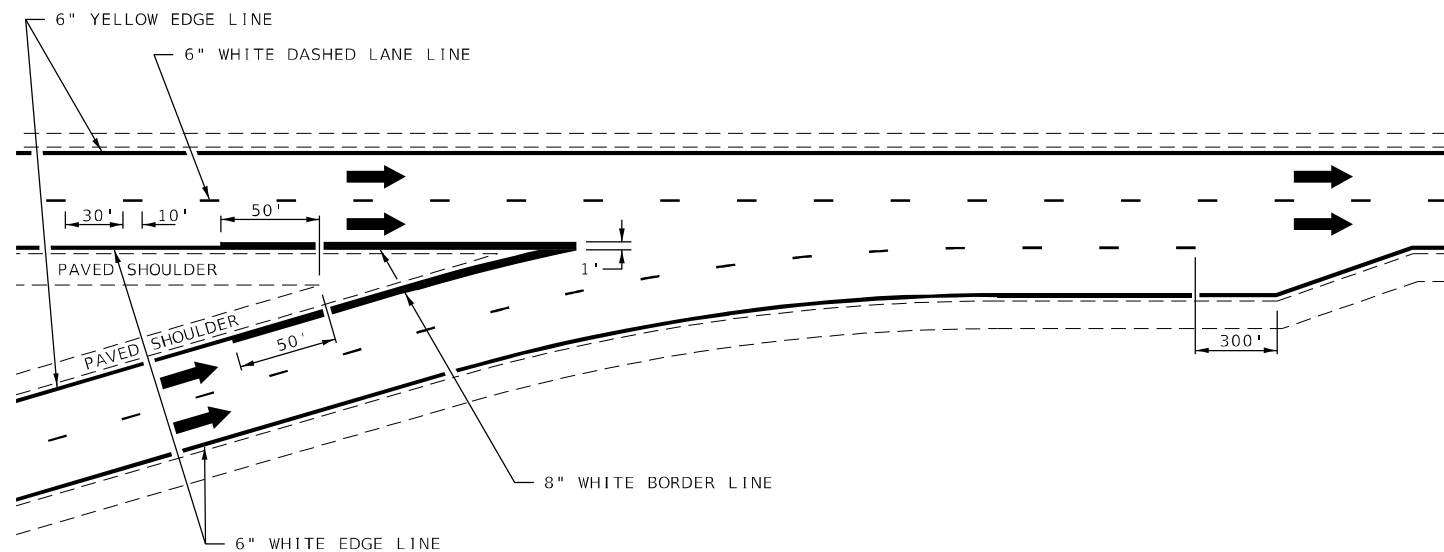
USER NAME = jessica.wille	DESIGNED -	REVISED -
	DRAWN -	REVISED -
PLOT SCALE = 100,0000' / in.	CHECKED -	REVISED -
PLOT DATE = 3/21/2024	DATE -	REVISED -

STATE OF ILLINOIS
DEPARTMENT OF TRANSPORTATION

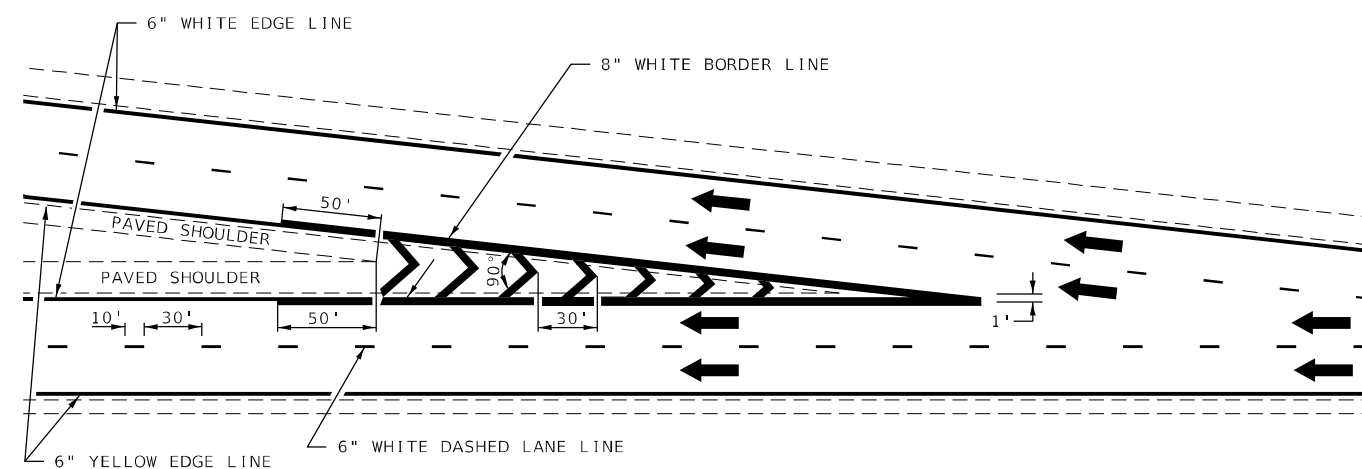
DISTRICT DETAILS

SCALE: SHEET OF SHEETS STA. TO STA.

F.A.I. RTE.	SECTION	COUNTY	TOTAL SHEETS	SHEET NO.
70	D7 JOINT REPAIRS 2024-1	CLARK	6	5
CONTRACT NO. 74A65				
ILLINOIS FED. AID PROJECT				

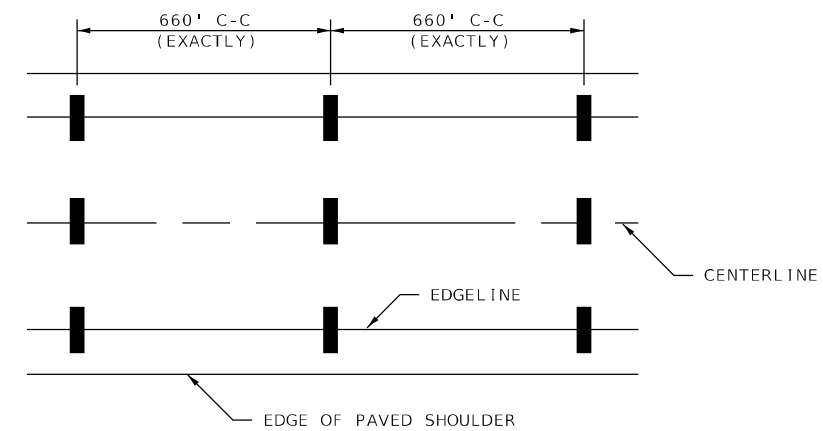


TYPICAL CONVERGENCE MARKING

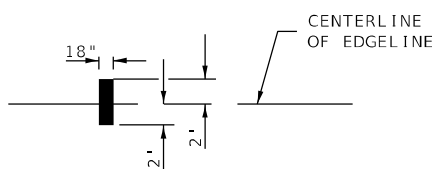


TYPICAL DIVERGENCE MARKING

AERIAL SPEED CHECK ZONES



IT WILL BE NECESSARY TO HAVE A REPRESENTATIVE OF THE STATE POLICE PRESENT SO THAT THE ACCURACY OF MEASUREMENT CAN BE ATTESTED TO IN COURT.



NOT TO SCALE

MODEL: Default
 FILE: I:\Users\jessica.hille\Documents\DOT Office\District 7\Project\74A65\CADD\Drawings\DOT\74A65-18.dwg

USER NAME = jessica.hille	DESIGNED -	REVISED -
	DRAWN -	REVISED -
PLOT SCALE = 100,0000' / in.	CHECKED -	REVISED -
PLOT DATE = 3/21/2024	DATE -	REVISED -

STATE OF ILLINOIS
 DEPARTMENT OF TRANSPORTATION

DISTRICT DETAILS

SCALE: SHEET OF SHEETS STA. TO STA.

F.A.I. RTE.	SECTION	COUNTY	TOTAL SHEETS	SHEET NO.
70	D7 JOINT REPAIRS 2024-1	CLARK	6	6
CONTRACT NO. 74A65				
ILLINOIS FED. AID PROJECT				