

STATE OF ILLINOIS  
DEPARTMENT OF TRANSPORTATION

FAI RTE.	SECTION	COUNTY	TOTAL SHEETS	SHEET NO.
157	D7 PATCHING 2024-5	COLES	7	1
		ILLINOIS	CONTRACT NO. 74C94	

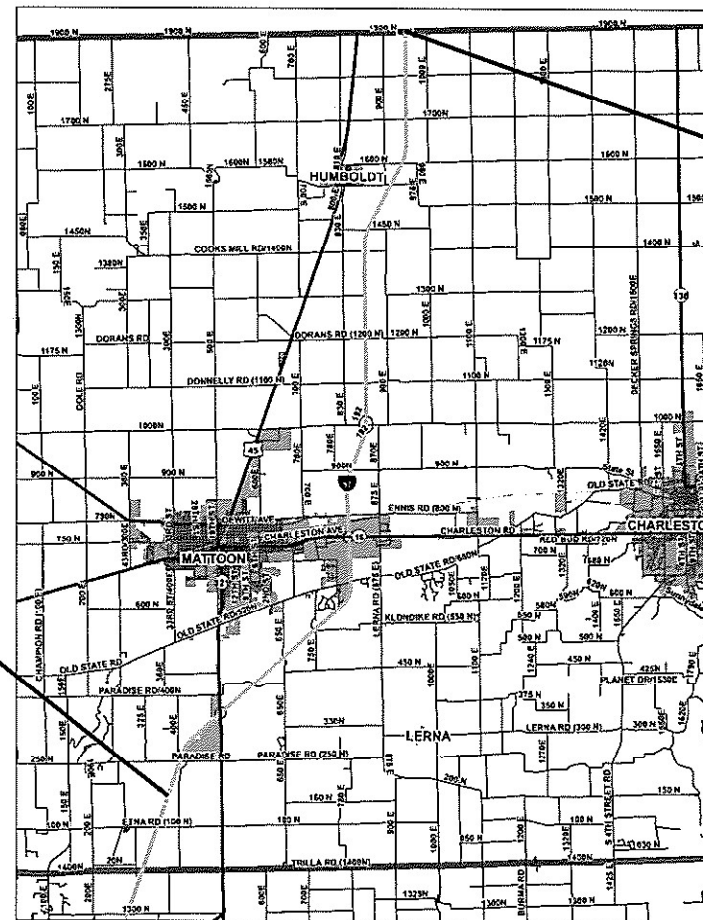
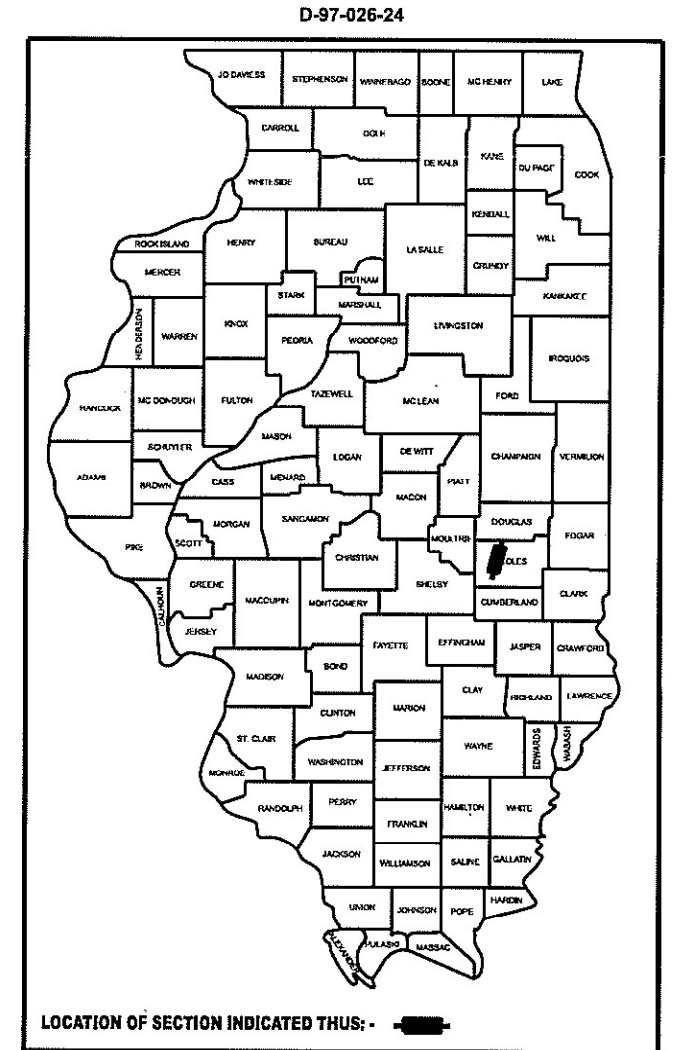
FOR INDEX OF SHEETS, SEE SHEET NO. 2

ADT = 23400 (2021)

PROPOSED  
HIGHWAY PLANS

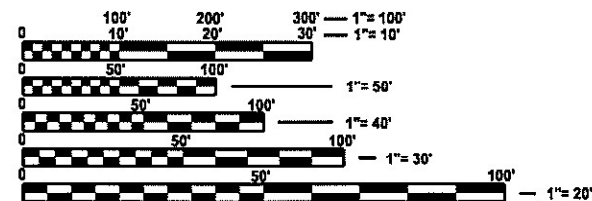
FAI ROUTE 57 (I-57)  
SECTION D7 PATCHING 2024-5  
PROJECT  
PATCHING  
COLES COUNTY

C-97-055-24



PROJECT  
ENDS  
MILE POST  
202

PROJECT  
BEGINS  
MILE POST  
182



FULL SIZE PLANS HAVE BEEN PREPARED USING STANDARD ENGINEERING SCALES. REDUCED SIZED PLANS WILL NOT CONFORM TO STANDARD SCALES. IN MAKING MEASUREMENTS ON REDUCED PLANS, THE ABOVE SCALES MAY BE USED.

J.U.L.I.E.  
JOINT UTILITY LOCATION INFORMATION FOR EXCAVATION  
1-800-892-0123  
OR 811

PROJECT ENGINEER: MATT BOWER  
PROJECT MANAGER: RYAN ARMSTRONG

CONTRACT NO. 74C94

GROSS LENGTH = 104,280 FT. = 19.75 MILE  
NET LENGTH = 104,280 FT. = 19.75 MILE

STATE OF ILLINOIS  
DEPARTMENT OF TRANSPORTATION

SUBMITTED March 19 2024  
Jeffery P. Myer  
REGIONAL ENGINEER

May 10, 2024 [Signature]  
ENGINEER OF DESIGN AND ENVIRONMENT

May 10, 2024 [Signature]  
DIRECTOR OF HIGHWAYS PROJECT IMPLEMENTATION

PRINTED BY THE AUTHORITY  
OF THE STATE OF ILLINOIS

GENERAL NOTES

THIS PROJECT IS LOCATED ON I-57 FROM MP 182 (1.9 MILES NORTH OF THE CUMBERLAND COUNTY LINE) TO MP 202 (DOUGLAS COUNTY LINE). THE WORK INCLUDED IN SECTION D7 PATCHING 2024-5 CONSISTS OF PAVEMENT PATCHING, TRAFFIC CONTROL, AND ANY OTHER WORK NECESSARY TO COMPLETE THIS PROJECT.

THE ACTUAL LOCATIONS AND QUANTITIES SHALL BE DETERMINED BY THE ENGINEER IN THE FIELD.

PATCHING REINFORCEMENT AND ALL TIE BARS WILL BE #6 TIE BARS.

INDEX OF SHEETS

SHEET NO.	ITEM
1	COVER SHEET
2	GENERAL NOTES, INDEX OF SHEETS & LIST OF STANDARDS
3	SUMMARY OF QUANTITIES
4-5	PATCHING SCHEDULES
6-7	CLASS A PATCHES (SPECIAL) DETAILS

THE FOLLOWING STANDARDS ARE A PART OF THESE PLANS AND ARE INCLUDED AFTER SHEET NO. 8:  
STANDARD NO. DESCRIPTION

000001-08	STANDARD SYMBOLS, ABBREVIATIONS AND PATTERNS
001001-02	AREAS OF REINFORCEMENT BARS
001006	DECIMAL OF AN INCH AND OF A FOOT
420001-10	PAVEMENT JOINTS
442001-04	CLASS A PATCHES
701400-12	APPROACH TO LANE CLOSURE, FREEWAY/EXPRESSWAY
701401-13	LANE CLOSURE, FREEWAY/EXPRESSWAY
701411-09	LANE CLOSURE, MULTILANE, AT ENTRANCE OR EXIT RAMP, FOR SPEEDS >=45MPH
701456-05	PARTIAL EXIT RAMP CLOSURE, FREEWAY/EXPRESSWAY
701901-09	TRAFFIC CONTROL DEVICES

MODEL: Default  
FILE NAME: c:\p\work\pww\delstefanmk097220\074C94-sh-genote.dgn

USER NAME = Ryan.J.Armstrong	DESIGNED -	REVISED -
	DRAWN -	REVISED -
PLOT SCALE = \$\$SCALE\$	CHECKED -	REVISED -
PLOT DATE = 2/23/2024	DATE -	REVISED -

**STATE OF ILLINOIS  
DEPARTMENT OF TRANSPORTATION**

**INDEX OF SHEETS & GENERAL NOTES**

SCALE: SHEET 1 OF 1 SHEETS STA. TO STA.

F.A.I RTE.	SECTION	COUNTY	TOTAL SHEETS	SHEET NO.
I 57	D7 PATCHING 2024-5	COLES	7	2
CONTRACT NO. 74C94				
			ILLINOIS	FED.AID PROJECT



-57 NB CLASS A PATCHING (SPECIAL) 14"											
PATCH NUMBER	LANE	STA MILE POST	LENGTH FT	WIDTH FT	CLASS A TYPE I SY	CLASS A TYPE II SY	CLASS A TYPE III SY	CLASS A TYPE IV SY	TIE BARS EA	PATCH REINF SY	SAW CUT FT
1	NBDL	182.770	120.0	12.0				160.0	59	160.0	264.0
2	NBPL	183.837	6.0	12.0		8.0				8.0	36.0
3	NBDL	183.841	6.0	12.0		8.0				8.0	36.0
4	NBDL	183.874	6.0	12.0		8.0				8.0	36.0
5	NBPL	183.900	6.0	12.0		8.0				8.0	36.0
6	NBDL	183.916	6.0	12.0		8.0				8.0	36.0
7	NBDL	184.072	6.0	12.0		8.0				8.0	36.0
8	NBPL	184.402	10.0	12.0		13.3				13.3	44.0
9	NBDL	184.464	10.0	12.0		13.3				13.3	44.0
10	NBPL	184.466	6.0	12.0		8.0				8.0	36.0
11	NBPL	184.542	6.0	12.0		8.0				8.0	36.0
12	NBPL	184.542	6.0	12.0		8.0				8.0	36.0
13	NBDL	184.570	10.0	12.0		13.3				13.3	44.0
14	NBPL	184.622	6.0	12.0		8.0				8.0	36.0
15	NBPL	184.627	25.0	12.0				33.3	12	33.3	74.0
16	NBDL	184.744	8.0	12.0		10.7				10.7	40.0
17	NBPL	184.939	8.0	12.0		10.7				10.7	40.0
18	NBDL	185.293	15.0	12.0			20.0			20.0	54.0
19	NBPL	185.607	6.0	12.0		8.0				8.0	36.0
20	NBDL	185.610	6.0	12.0		8.0				8.0	36.0
21	NBDL	185.688	6.0	12.0		8.0				8.0	36.0
22	NBPL	185.720	8.0	12.0		10.7				10.7	40.0
23	NBPL	185.771	6.0	12.0		8.0				8.0	36.0
24	NBDL	185.838	8.0	12.0		10.7				10.7	40.0
25	NBDL	186.058	6.0	12.0		8.0				8.0	36.0
26	NBDL	186.262	6.0	12.0		8.0				8.0	36.0
27	NBPL	186.340	8.0	12.0		10.7				10.7	40.0
28	NBDL	186.405	6.0	12.0		8.0				8.0	36.0
29	NBPL	186.405	6.0	12.0		8.0				8.0	36.0
30	NBPL	186.445	6.0	12.0		8.0				8.0	36.0
31	NBDL	186.524	6.0	12.0		8.0				8.0	36.0
32	NBDL	186.660	6.0	12.0		8.0				8.0	36.0
33	NBPL	186.770	10.0	12.0		13.3				13.3	44.0
34	NBDL	186.822	6.0	12.0		8.0				8.0	36.0
35	NBDL	187.258	6.0	12.0		8.0				8.0	36.0
36	NBDL	187.908	6.0	12.0		8.0				8.0	36.0
37	NBDL	188.866	6.0	12.0		8.0				8.0	36.0
38	NBDL	188.931	6.0	12.0		8.0				8.0	36.0
39	NBPL	188.931	6.0	12.0		8.0				8.0	36.0
40	NBDL	189.193	6.0	12.0		8.0				8.0	36.0
41	NBPL	190.122	6.0	12.0		8.0				8.0	36.0
42	NBDL	190.226	6.0	12.0		8.0				8.0	36.0
43	NBPL	190.235	6.0	12.0		8.0				8.0	36.0
44	NBDL	190.360	6.0	12.0		8.0				8.0	36.0
45	NBDL	190.541	6.0	12.0		8.0				8.0	36.0
46	NBPL	190.548	10.0	12.0		13.3				13.3	44.0
47	NBDL	190.580	6.0	12.0		8.0				8.0	36.0
48	NBDL	190.658	6.0	12.0		8.0				8.0	36.0
49	NBPL	190.658	6.0	12.0		8.0				8.0	36.0
50	NBDL	191.100	6.0	12.0		8.0				8.0	36.0

-57 NB CLASS A PATCHING (SPECIAL) 14"											
PATCH NUMBER	LANE	STA MILE POST	LENGTH FT	WIDTH FT	CLASS A TYPE I SY	CLASS A TYPE II SY	CLASS A TYPE III SY	CLASS A TYPE IV SY	TIE BARS EA	PATCH REINF SY	SAW CUT FT
51	NBDL	191.396	6.0	12.0		8.0				8.0	36.0
52	NBPL	191.396	6.0	12.0		8.0				8.0	36.0
53	NBDL	191.640	6.0	12.0		8.0				8.0	36.0
54	NBDL	192.395	15.0	12.0			20.0			20.0	54.0
55	NBDL	192.455	6.0	6.0	4.0					4.0	24.0
56	NBDL	192.476	6.0	6.0	4.0					4.0	24.0
57	NBDL	192.511	6.0	12.0		8.0				8.0	36.0
58	NBDL	192.642	6.0	12.0		8.0				8.0	36.0
59	NBDL	192.984	8.0	12.0		10.7				10.7	40.0
60	NBDL	193.931	10.0	12.0		13.3				13.3	44.0
61	NBDL	194.000	12.0	12.0			16.0			16.0	48.0
62	NBPL	194.000	12.0	12.0			16.0			16.0	48.0
63	NBDL	194.655	6.0	12.0		8.0				8.0	36.0
64	NBDL	194.672	6.0	12.0		8.0				8.0	36.0
65	NBDL	194.817	6.0	12.0		8.0				8.0	36.0
66	NBDL	195.725	6.0	12.0		8.0				8.0	36.0
67	NBDL	195.774	10.0	12.0		13.3				13.3	44.0
68	NBDL	196.550	8.0	12.0		10.7				10.7	40.0
69	NBPL	199.071	8.0	12.0		10.7				10.7	40.0
70	NBDL	199.100	10.0	12.0		13.3				13.3	44.0
71	NBDL	199.447	25.0	12.0				33.3	12	33.3	74.0
72	NBDL	199.485	10.0	12.0		13.3				13.3	44.0
73	NBPL	199.915	15.0	12.0			20.0			20.0	54.0
74	NBDL	201.253	10.0	12.0		13.3				13.3	44.0

MODEL: Default  
FILE NAME: c:\p\work\pwr\delstefanmak097220\0774C94-sh-schedule.dgn

USER NAME = Ryan.J.Armstrong	DESIGNED -	REVISED -
	DRAWN -	REVISED -
PLOT SCALE = \$\$SCALE\$	CHECKED -	REVISED -
PLOT DATE = 3/18/2024	DATE -	REVISED -

**STATE OF ILLINOIS  
DEPARTMENT OF TRANSPORTATION**

**SCHEDULE OF QUANTITIES  
CLASS A PATCHES (SPECIAL)**

SCALE: SHEET 1 OF 2 SHEETS STA. TO STA.

F.A.I RTE.	SECTION	COUNTY	TOTAL SHEETS	SHEET NO.
157	D7 PATCHING 2024-5	COLES	7	4
CONTRACT NO. 74C94				
		ILLINOIS	FED. AID PROJECT	

I-57 SB CLASS A PATCHING (SPECIAL) 14"											
PATCH NUMBER	LANE	STA MILE POST	LENGTH FT	WIDTH FT	CLASS A TYPE I SY	CLASS A TYPE II SY	CLASS A TYPE III SY	CLASS A TYPE IV SY	TIE BARS EA	PATCH REINF SY	SAW CUT FT
75	SBDL	201.433	6.0	12.0		8.0				8.0	36.0
76	SBPL	201.433	6.0	6.0	4.0					4.0	24.0
77	SBDL	199.700	6.0	12.0		8.0				8.0	36.0
78	SBDL	199.468	15.0	12.0			20.0			20.0	54.0
79	SBPL	199.468	10.0	12.0		13.3				13.3	44.0
80	SBDL	199.461	8.0	12.0		10.7				10.7	40.0
81	SBDL	199.450	6.0	12.0		8.0				8.0	36.0
82	SBDL	199.285	6.0	12.0		8.0				8.0	36.0
83	SBDL	198.890	6.0	12.0		8.0				8.0	36.0
84	SBDL	198.475	8.0	12.0		10.7				10.7	40.0
85	SBDL	197.236	6.0	12.0		8.0				8.0	36.0
86	SBDL	196.849	6.0	12.0		8.0				8.0	36.0
87	SBDL	196.626	6.0	12.0		8.0				8.0	36.0
88	SBPL	196.626	6.0	12.0		8.0				8.0	36.0
89	SBPL	196.028	8.0	12.0		10.7				10.7	40.0
90	SBDL	195.860	6.0	12.0		8.0				8.0	36.0
91	SBDL	194.869	6.0	12.0		8.0				8.0	36.0
92	SBDL	194.554	8.0	12.0		10.7				10.7	40.0
93	SBDL	194.456	6.0	12.0		8.0				8.0	36.0
94	SBDL	193.785	8.0	12.0		10.7				10.7	40.0
95	SBDL	193.316	6.0	12.0		8.0				8.0	36.0
96	SBDL	192.551	6.0	12.0		8.0				8.0	36.0
97	SBDL	192.516	10.0	12.0		13.3				13.3	44.0
98	SBDL	192.421	6.0	12.0		8.0				8.0	36.0
99	SBDL	192.283	6.0	12.0		8.0				8.0	36.0
100	SBPL	192.283	6.0	12.0		8.0				8.0	36.0
101	SBDL	192.188	6.0	12.0		8.0				8.0	36.0
102	SBDL	191.802	15.0	12.0			20.0			20.0	54.0
103	SBDL	191.784	8.0	12.0		10.7				10.7	40.0
104	SBDL	191.753	6.0	12.0		8.0				8.0	36.0
105	SBPL	191.697	6.0	12.0		8.0				8.0	36.0
106	SBDL	191.462	8.0	12.0		10.7				10.7	40.0
107	SBPL	191.462	8.0	12.0		10.7				10.7	40.0
108	SBDL	191.392	8.0	12.0		10.7				10.7	40.0
109	SBPL	191.392	8.0	12.0		10.7				10.7	40.0
110	SBPL	190.523	6.0	12.0		8.0				8.0	36.0
111	SBDL	190.519	6.0	12.0		8.0				8.0	36.0
112	SBPL	190.519	6.0	12.0		8.0				8.0	36.0
113	SBDL	190.094	6.0	12.0		8.0				8.0	36.0
114	SBPL	190.094	6.0	12.0		8.0				8.0	36.0
115	SBDL	190.038	6.0	12.0		8.0				8.0	36.0
116	SBPL	190.038	6.0	12.0		8.0				8.0	36.0
117	SBDL	189.950	6.0	12.0		8.0				8.0	36.0
118	SBPL	189.950	6.0	12.0		8.0				8.0	36.0
119	SBPL	189.827	6.0	12.0		8.0				8.0	36.0
120	SBPL	189.718	6.0	12.0		8.0				8.0	36.0
121	SBDL	189.711	6.0	12.0		8.0				8.0	36.0
122	SBDL	189.633	6.0	12.0		8.0				8.0	36.0
123	SBPL	189.633	6.0	12.0		8.0				8.0	36.0
124	SBDL	189.565	8.0	12.0		10.7				10.7	40.0

I-57 SB CLASS A PATCHING (SPECIAL) 14"											
PATCH NUMBER	LANE	STA MILE POST	LENGTH FT	WIDTH FT	CLASS A TYPE I SY	CLASS A TYPE II SY	CLASS A TYPE III SY	CLASS A TYPE IV SY	TIE BARS EA	PATCH REINF SY	SAW CUT FT
125	SBPL	189.565	8.0	12.0		10.7				10.7	40.0
126	SBOFF	189.565	8.0	12.0		10.7				10.7	40.0
127	SBDL	189.560	8.0	12.0		10.7				10.7	40.0
128	SBPL	189.380	6.0	12.0		8.0				8.0	36.0
129	SBPL	189.325	6.0	12.0		8.0				8.0	36.0
130	SBDL	189.273	6.0	12.0		8.0				8.0	36.0
131	SBPL	188.888	8.0	12.0		10.7				10.7	40.0
132	SBDL	188.841	6.0	12.0		8.0				8.0	36.0
133	SBDL	188.870	15.0	12.0			20.0			20.0	54.0
134	SBPL	187.685	6.0	12.0		8.0				8.0	36.0
135	SBDL	187.156	6.0	12.0		8.0				8.0	36.0
136	SBPL	187.156	6.0	12.0		8.0				8.0	36.0
137	SBDL	186.991	6.0	12.0		8.0				8.0	36.0
138	SBPL	186.826	6.0	12.0		8.0				8.0	36.0
139	SBDL	186.276	8.0	12.0		10.7				10.7	40.0
140	SBDL	186.048	6.0	12.0		8.0				8.0	36.0
141	SBDL	185.732	6.0	12.0		8.0				8.0	36.0
142	SBDL	185.665	15.0	12.0			20.0			20.0	54.0
143	SBDL	185.308	6.0	12.0		8.0				8.0	36.0
144	SBDL	185.209	6.0	12.0		8.0				8.0	36.0
145	SBPL	184.954	6.0	12.0		8.0				8.0	36.0
146	SBDL	184.810	20.0	12.0				26.7	9	26.7	64.0
147	SBPL	184.708	6.0	12.0		8.0				8.0	36.0
148	SBDL	184.595	20.0	12.0				26.7	9	26.7	64.0
149	SBDL	184.510	6.0	12.0		8.0				8.0	36.0
150	SBPL	184.510	6.0	12.0		8.0				8.0	36.0
151	SBPL	184.101	6.0	12.0		8.0				8.0	36.0
152	SBDL	184.094	6.0	12.0		8.0				8.0	36.0
153	SBPL	184.010	6.0	12.0		8.0				8.0	36.0
154	SBDL	183.959	10.0	12.0		13.3				13.3	44.0

AT STOP BAR EXIT 184 NB OFF RAMP CLASS A PATCHING (SPECIAL) 14"											
PATCH NUMBER	LANE	STA MILE POST	LENGTH FT	WIDTH FT	CLASS A TYPE I SY	CLASS A TYPE II SY	CLASS A TYPE III SY	CLASS A TYPE IV SY	TIE BARS EA	PATCH REINF SY	SAW CUT FT
155	NB Ramp		120.0	16.0				213.3	59	213.3	272

CLASS A PATCHING (SPECIAL) TOTALS	CLASS A TYPE I SY	CLASS A TYPE II SY	CLASS A TYPE III SY	CLASS A TYPE IV SY	TIE BARS EA	PATCH REINF SY	SAW CUT FT
QUANTITIES	12	1230	172	494	160	1908	6490
NUMBER EACH	3	137	9	6			

MODEL: Default  
 FILE NAME: c:\p\work\pwworkstation\makk0972240\0714C94-sb-schedule.dgn

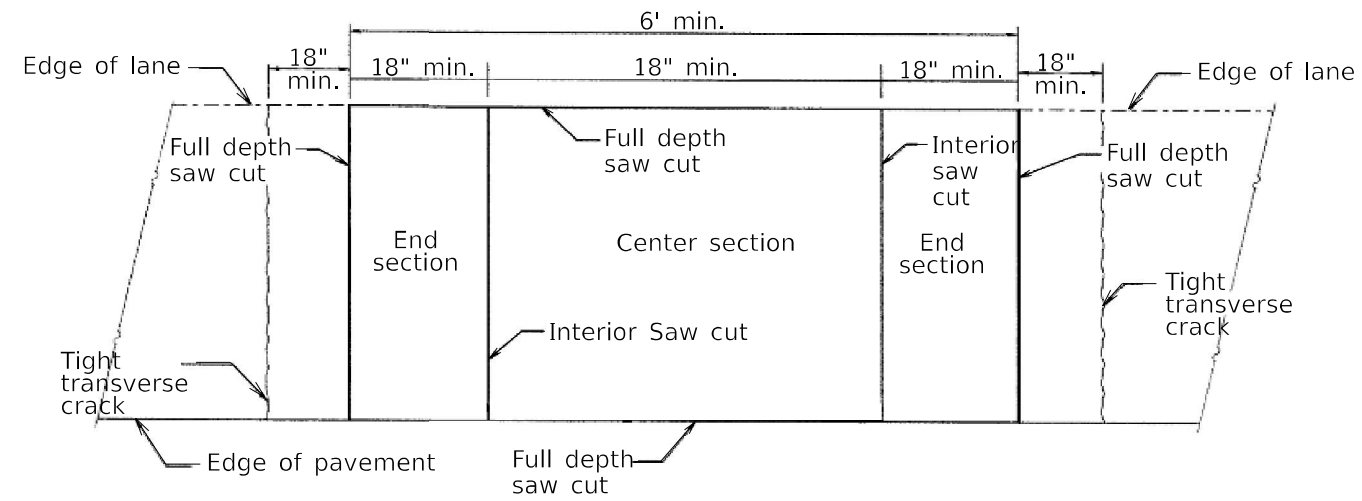
USER NAME = Ryan.J.Armstrong	DESIGNED -	REVISED -
	DRAWN -	REVISED -
PLOT SCALE = \$SCALES	CHECKED -	REVISED -
PLOT DATE = 3/18/2024	DATE -	REVISED -

**STATE OF ILLINOIS  
DEPARTMENT OF TRANSPORTATION**

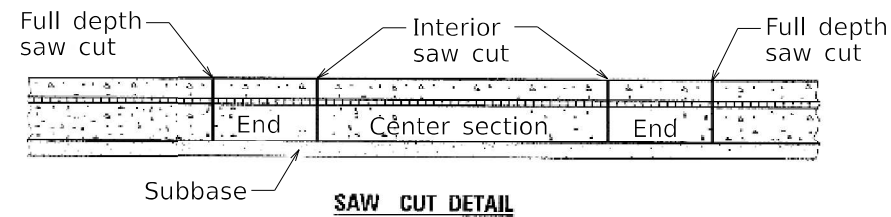
**SCHEDULE OF QUANTITIES  
CLASS A PATCHES (SPECIAL)**

SCALE: SHEET 2 OF 2 SHEETS STA. TO STA.

F.A.I RTE.	SECTION	COUNTY	TOTAL SHEETS	SHEET NO.
I 57	D7 PATCHING 2024-5	COLES	7	5
CONTRACT NO. 74C94				
		ILLINOIS	FED. AID PROJECT	



**PAVEMENT SAWING DETAIL**



**SAW CUT DETAIL**

**GENERAL NOTES**

Interior saw cuts will be included in the cost of "CLASS A PATCHES (SPECIAL)."

When patching two adjacent lanes in one operation, the longitudinal joint shall be a longitudinal sawed joint as detailed on Standard 442001-04, however, the groove may be either preformed or sowed.

MODEL: Default  
FILE NAME: c:\p\work\pav\detail\stefanmk097220\0714C94-sh-detail.dgn

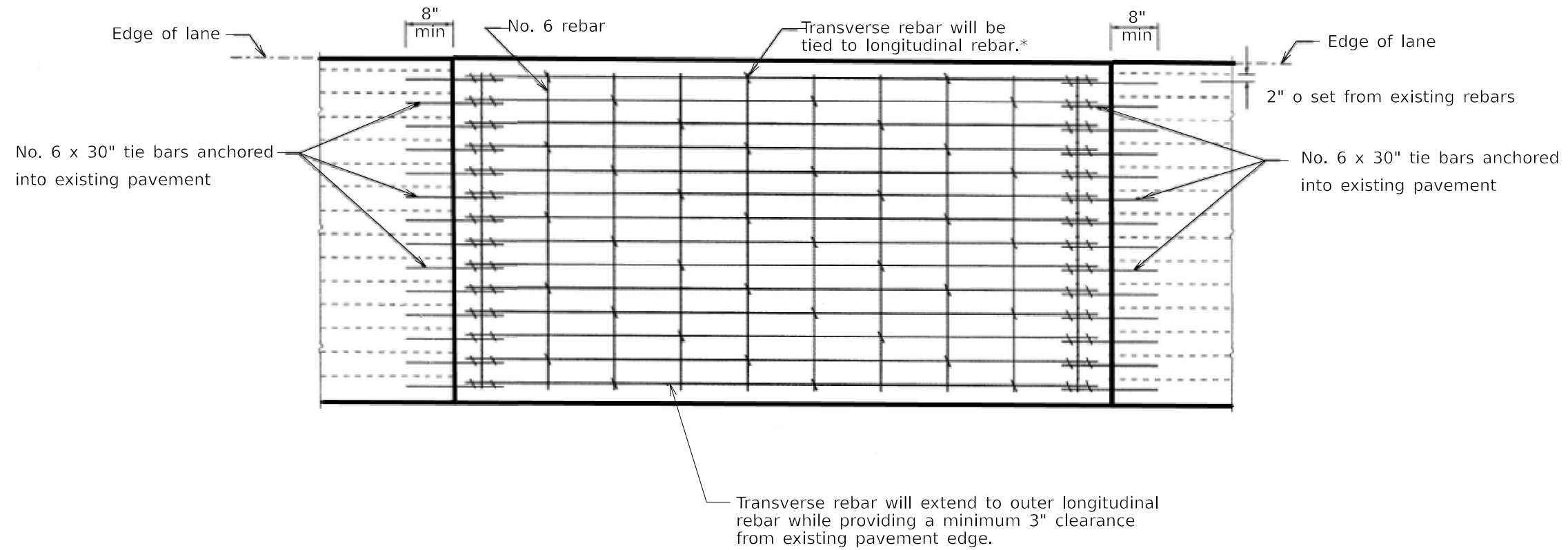
USER NAME = Ryan.J.Armstrong	DESIGNED -	REVISED -
	DRAWN -	REVISED -
PLOT SCALE = \$SCALE\$	CHECKED -	REVISED -
PLOT DATE = 3/19/2024	DATE -	REVISED -

**STATE OF ILLINOIS  
DEPARTMENT OF TRANSPORTATION**

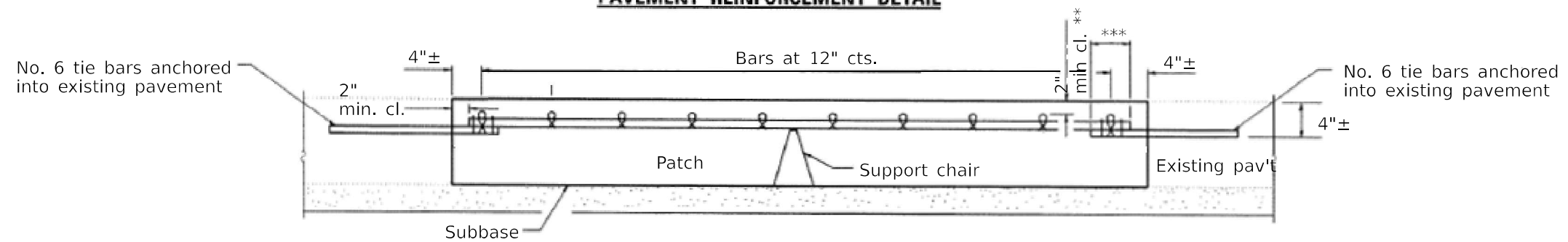
**CLASS A PATCHES (SPECIAL)**

SCALE: SHEET 1 OF 2 SHEETS STA. TO STA.

F.A.I. RTE.	SECTION	COUNTY	TOTAL SHEETS	SHEET NO.
157	D7 PATCHING 2024-5	COLES	7	6
CONTRACT NO. 74C94				
ILLINOIS FED. AID PROJECT				



**PAVEMENT REINFORCEMENT DETAIL**



**PATCHING DETAIL**

- \* Every 3rd intersection must be tied.
- \*\* When the minimum clearance cannot be obtained with the transverse bar on top then the transverse rebar shall be tied to the bottom of the longitudinal rebar.
- \*\*\* Minimum lap length is 18"

**GENERAL NOTES**

The #6 tie bars to be drilled & grouted into the existing pavement shall be included in the cost of "CLASS A PATCHES (SPECIAL)."

MODEL: Default  
FILE NAME: c:\p\work\pav\detail\stefanmak0972240\D774C94-sh-detail.dgn

USER NAME = Ryan.J.Armstrong	DESIGNED -	REVISED -
	DRAWN -	REVISED -
	CHECKED -	REVISED -
PLOT DATE = 3/19/2024	DATE -	REVISED -

**STATE OF ILLINOIS  
DEPARTMENT OF TRANSPORTATION**

**CLASS A PATCHES (SPECIAL)**

SCALE: SHEET 2 OF 2 SHEETS STA. TO STA.

F.A. RTE.	SECTION	COUNTY	TOTAL SHEETS	SHEET NO.
I-57	D7 PATCHING 2024-5	COLES	7	7
CONTRACT NO. 74C94			ILLINOIS FED. AID PROJECT	