

STATE OF ILLINOIS  
DEPARTMENT OF TRANSPORTATION

PROPOSED  
HIGHWAY PLANS

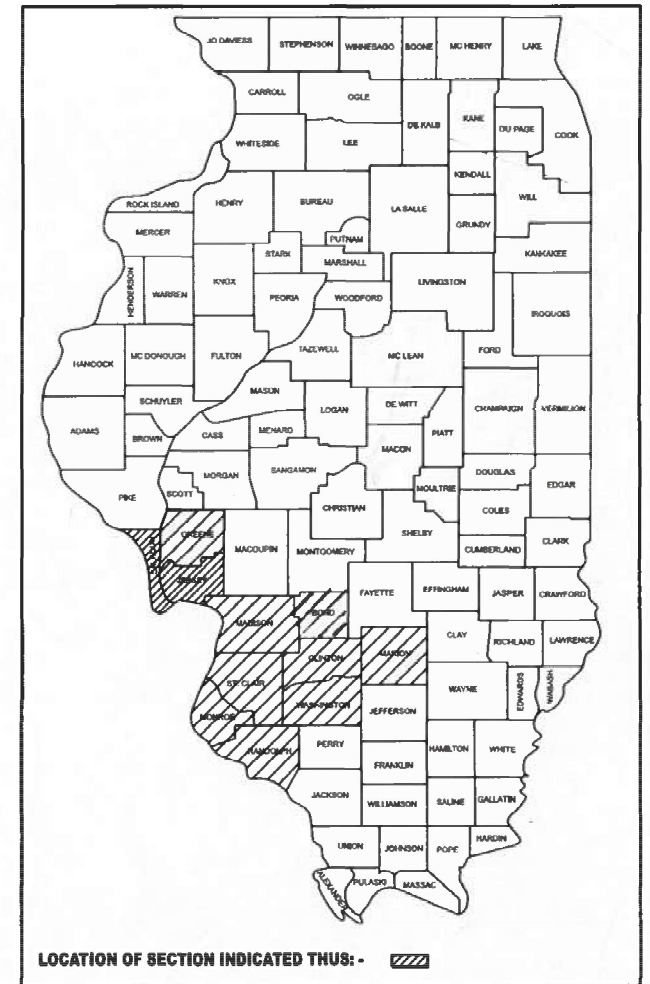
VARIOUS ROUTES  
SECTION DIST 8 GUARDRAIL 2025-1

GUARDRAIL & CABLE MEDIAN REPAIR  
VARIOUS COUNTIES

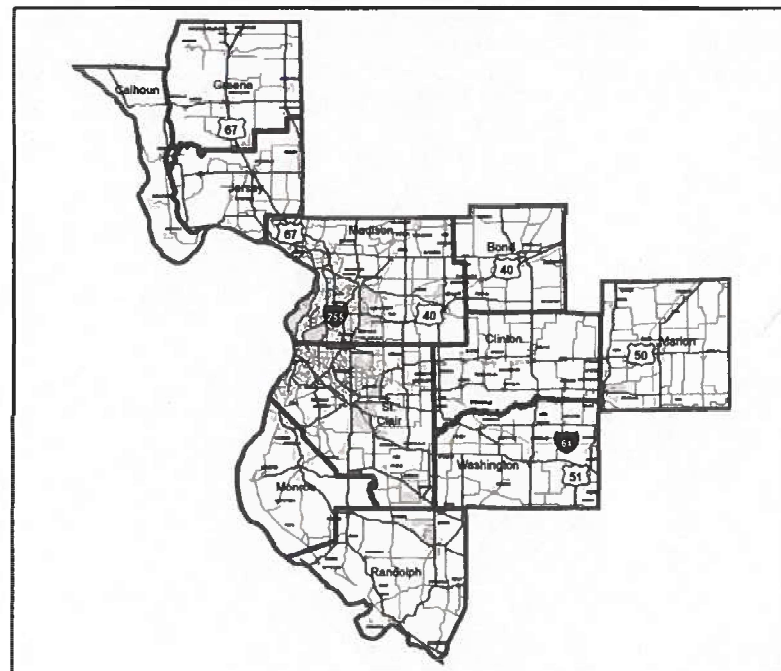
C-98-090-24

F.A. RTE.	SECTION	COUNTY	TOTAL SHEETS	SHEET NO.
VAR	DIST 8 GUARDRAIL 2025-1	VARIOUS	12	1
		ILLINOIS	CONTRACT NO. 76T58	

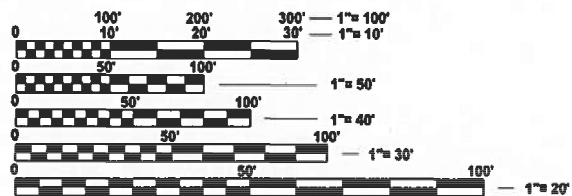
D-98-030-24



FOR INDEX OF SHEETS, SEE SHEET NO. 2



NOT TO SCALE



FULL SIZE PLANS HAVE BEEN PREPARED USING STANDARD ENGINEERING SCALES. REDUCED SIZED PLANS WILL NOT CONFORM TO STANDARD SCALES. IN MAKING MEASUREMENTS ON REDUCED PLANS, THE ABOVE SCALES MAY BE USED.

J.U.L.I.E.  
JOINT UTILITY LOCATION INFORMATION FOR EXCAVATION  
1-800-892-0123  
OR 811

PROJECT ENGINEER - CHERYL KEPLAR  
PROJECT MANAGER - TONI MANN

CONTRACT NO. 76T58

STATE OF ILLINOIS  
DEPARTMENT OF TRANSPORTATION

SUBMITTED March 11, 2024  
Kevin H. Brown  
REGIONAL ENGINEER

May 10, 2024 [Signature]  
ENGINEER OF DESIGN AND ENVIRONMENT

May 10, 2024 [Signature]  
DIRECTOR OF HIGHWAYS PROJECT IMPLEMENTATION

PRINTED BY THE AUTHORITY  
OF THE STATE OF ILLINOIS

INDEX OF SHEETS

1. COVER SHEET
2. INDEX OF SHEETS, HIGHWAY STANDARDS, GENERAL NOTES, AND COMMITMENTS
- 3.-5. SUMMARY OF QUANTITIES
6. HIGH TENSION CABLE LOCATION MAP
- 7.-12. GUARDRAIL DETAILS

HIGHWAY STANDARDS

000001-08	701201-05
001006	701301-04
630001-13	701400-12
630101-11	701401-13
630301-09	701406-13
631006-08	701421-08
631011-10	701426-09
631026-06	701428-01
631031-18	701456-05
635001-02	701501-06
636001-02	701502-09
643001-02	701601-09
701001-02	701602-10
701006-05	701606-10
701011-04	701701-10
701101-05	701901-09
701106-02	725001-01
	782006-01

GENERAL NOTES

1. BEFORE ORDERING THE IMPACT ATTENUATORS, THE CONTRACTOR MUST CONTACT THE OPERATIONS FIELD ENGINEER TO RECEIVE APPROVAL OF THE PROPOSED INSTALLATION.
2. ALL WORK IS TO BE REPLACED IN KIND OR AS INDICATED ON THE CONTRACT PLANS AND PROVISIONS.
3. NO MATERIAL SHALL BE LEFT ON OR NEAR THE ROADWAY DURING NON-WORKING HOURS.
4. ANY NECESSARY TRAFFIC CONTROL WILL BE PROVIDED BY THE CONTRACTOR; APPROPRIATE STANDARDS ARE LISTED IN THE PLANS AND CONTRACT DOCUMENTS.
5. ALL REFLECTORS SHALL BE PLACED AT THE DISCRETION OF THE ENGINEER. COST OF REFLECTORS TO BE INCLUDED IN THE GUARDRAIL PAY ITEMS.
6. ILLINOIS STATE LAW REQUIRES A 48-HOUR NOTICE TO BE GIVEN TO UTILITIES BEFORE DIGGING. FIELD MARKING OF FACILITIES MAY BE OBTAINED BY CONTACTING J.U.L.I.E. (PHONE 800-892-0123) OR FOR NON-MEMBERS, THE UTILITY COMPANY DIRECTLY.
7. WHEN NO WORK IS BEING PERFORMED, THE FLAGGERS WILL NOT BE REQUIRED. IF THE FLAGGERS ARE NOT PRESENT, THE FLAGGER SIGNS SHALL BE REMOVED OR COVERED.
8. PRIOR TO ORDERING ANY MATERIALS, THE CONTRACTOR SHALL CONFIRM THE TYPES AND SPECIFIC MANUFACTURER FOR THE GUARDRAIL AND CABLE REPAIRS REQUIRED.
9. 45 AND 55 MPH SIGNS ARE INCLUDED IN ALL INTERSTATE LANE CLOSURES. IF THE LANE CLOSURE DURATION IS LESS THAN 4 HOURS, THE 45 AND 55 MPH SIGNS ARE NOT REQUIRED.
10. NO OVERNIGHT LANE CLOSURES WILL BE ALLOWED.
11. ARTICLE 701.20 OF THE STANDARD SPECIFICATIONS DISCUSSES AN ADJUSTED UNIT PRICE. NO ADJUSTMENTS SHALL BE MADE TO THE TRAFFIC CONTROL PAY ITEMS FOR THIS CONTRACT.
12. THE CONTRACTOR SHALL BE ADVISED THAT THE GUARDRAIL PAY ITEMS INCLUDED IN THE PLANS MAY BE USED TO REPLACE/REPAIR SPBGR AND TRAFFIC BARRIER TERMINALS FOR EITHER THE CURRENT MIDWEST STYLES AS SHOWN IN THE HIGHWAY STANDARDS OR SPBGR AND TRAFFIC BARRIER TERMINALS INSTALLED PRIOR TO JANUARY 1, 2007 AS SHOWN IN THE PLAN DETAILS. NO ADDITIONAL COMPENSATION WILL BE ALLOWED FOR UTILIZING THE CURRENT MIDWEST STANDARDS.
13. THE DEPARTMENT STRONGLY ENCOURAGES THE PRIME CONTRACTOR AND THEIR SUB-CONTRACTORS TO HIRE MINORITY, WOMEN AND DISADVANTAGED INDIVIDUALS FROM ITS FEDERALLY FUNDED HIGHWAY CONSTRUCTION CAREERS TRAINING PROGRAM (HCCTP) TO HELP MEET WORKFORCE AND TRAINEE GOALS. THIS PROGRAM IS TRAINING MINORITIES, WOMEN AND DISADVANTAGED INDIVIDUALS IN HIGHWAY CONSTRUCTION-RELATED SKILLS, E.G., MATH FOR THE TRADES, JOB READINESS, TECHNICAL SKILLS COURSEWORK (CARPENTRY, CONCRETE FLATWORK, BLUEPRINT READING, SITE PLANS, SITE WORK, TOOLS USE, ETC.) AND OSHA 10 HOUR CERTIFICATION, TO PREPARE THEM FOR A CAREER IN THE HIGHWAY CONSTRUCTION TRADES. GRADUATES ARE WELL-TRAINED AND READY TO BECOME PRODUCTIVE ENTRY-LEVEL CONSTRUCTION WORKERS. CONTACT THE DISTRICT EEO OFFICE AT 618-346-3360 AND OR THE HCCTP COORDINATOR AT 618-874-6528 TO LEARN MORE ABOUT THE PROGRAM AND FOR ASSISTANCE IN MEETING WORKFORCE AND TRAINEE GOALS.

COMMITMENTS  
NONE

REV. - MS

MODEL: general notes (Sheet)  
FILE NAME: c:\pw\work\lewis\skad097212\0876158-shi-gemnotes.dgn

USER NAME = Kevin.Lewis	DESIGNED -	REVISED -
	DRAWN -	REVISED -
PLOT SCALE = \$\$SCALE\$	CHECKED -	REVISED -
PLOT DATE = 2/26/2024	DATE -	REVISED -

STATE OF ILLINOIS  
DEPARTMENT OF TRANSPORTATION

INDEX OF SHEETS, HIGHWAY STANDARDS,  
GENERAL NOTES, AND COMMITMENTS

SCALE: SHEET OF 12 SHEETS STA. TO STA.

F.A. RTE.	SECTION	COUNTY	TOTAL SHEETS	SHEET NO.
VAR	DIST 8 GUARDRAIL 2025-1	VARIOUS	12	2
CONTRACT NO. 76T58				
		ILLINOIS	FED. AID PROJECT	

MODEL: SOQ (Sheet)  
 FILE NAME: c:\p\work\lewis\lewis\k097212\0876T58-sh-SOQ.dgn

CODE NO.	ITEM	UNIT	TOTAL QUANTITY	CONSTRUCTION CODE		
				STATE	100% STATE MCHDF	100% STATE HTMCD
				NONE	NONE	NONE
				0021	0021	0021
				NONE	NONE	NONE
63000350	LONG-SPAN GUARDRAIL OVER CULVERT, 12 FT 6 IN SPAN	FOOT	250	250		
63100045	TRAFFIC BARRIER TERMINAL, TYPE 2	EACH	8	5	3	
63100070	TRAFFIC BARRIER TERMINAL, TYPE 5	EACH	8	5	3	
63100085	TRAFFIC BARRIER TERMINAL, TYPE 6	EACH	11	8	3	
63100167	TRAFFIC BARRIER TERMINAL, TYPE 1 (SPECIAL) TANGENT	EACH	111	80	31	
63100169	TRAFFIC BARRIER TERMINAL, TYPE 1 (SPECIAL) FLARED	EACH	44	10	34	
64300260	IMPACT ATTENUATORS (FULLY REDIRECTIVE, NARROW), TEST LEVEL 3	EACH	6	3	3	
64300370	IMPACT ATTENUATORS (FULLY REDIRECTIVE, WIDE), TEST LEVEL 3	EACH	6	3	3	
67100100	MOBILIZATION	L SUM	1	0.33	0.34	0.33
72501000	TERMINAL MARKER - DIRECT APPLIED	EACH	163	95	68	
78200005	GUARDRAIL REFLECTORS, TYPE A	EACH	7	7		
X0326468	MEDIAN CABLE	FOOT	1600			1600
X6300210	GUARDRAIL BLOCKS	EACH	1200	500	700	
X6300215	RAIL ELEMENT PLATES	EACH	900	300	600	

REV. - MS

USER NAME = Kevin.Lewis	DESIGNED -	REVISED -	<b>STATE OF ILLINOIS DEPARTMENT OF TRANSPORTATION</b>	<b>SUMMARY OF QUANTITIES</b>			F.A. RTE.	SECTION	COUNTY	TOTAL SHEETS	SHEET NO.
	DRAWN -	REVISED -					VAR	DIST 8 GUARDRAIL 2025-1	VARIOUS	12	3
	CHECKED -	REVISED -		SCALE: SHEET OF 12 SHEETS STA. TO STA.			CONTRACT NO. 76T58				
PLOT DATE = 3/7/2024	DATE -	REVISED -		ILLINOIS FED. AID PROJECT							

CODE NO.	ITEM	UNIT	TOTAL QUANTITY	CONSTRUCTION CODE		
				STATE	100% STATE	100% STATE
				NONE	MCHDF	HTMCD
				0021	0021	0021
				NONE	NONE	NONE
X6300217	RAIL ELEMENT PLATES (RADIUS)	EACH	75	30	45	
X6300220	EXTRUDER HEAD	EACH	20	10	10	
X6300225	SINGLE END SECTION	EACH	7	3	4	
X6300231	STEEL POST, ATTACHED TO STRUCTURES	EACH	12	5	7	
X6300236	STEEL POSTS 6'	EACH	950	350	600	
X6300239	STEEL POSTS 9'	EACH	500	200	300	
X6331110	STEEL POSTS (SPECIAL)	EACH	14	6	8	
X6360108	CABLE GUARD POST	EACH	1000			1000
X6430210	REMOVE AND REINSTALL IMPACT ATTENUATORS	EACH	140	60	80	
X6440120	HIGH TENSION CABLE POST REPAIR	EACH	400			400
X7011834	TRAFFIC CONTROL AND PROTECTION, CALL OUT WORK	EACH	380	180	200	
X7011836	TRAFFIC CONTROL AND PROTECTION, FREEWAY/EXPRESSWAY, CALL OUT WORK	EACH	835	165	170	500
X8030110	LOCATING UNDERGROUND CABLE (SPECIAL)	EACH	9	5	4	
Z0029655	HIGH TENSION CABLE ROAD GUARDPOST	EACH	1400			1400

MODEL: SOQ2 (Sheet)  
 FILE NAME: c:\p\work\lewis\lewis\skad097212\0876158-sh-SOQ.dgn

USER NAME = Kevin.Lewis	DESIGNED -	REVISED -
	DRAWN -	REVISED -
	CHECKED -	REVISED -
PLOT DATE = 2/27/2024	DATE -	REVISED -

**STATE OF ILLINOIS  
DEPARTMENT OF TRANSPORTATION**

**SUMMARY OF QUANTITIES**

SCALE: SHEET OF 12 SHEETS STA. TO STA.

F.A. RTE.	SECTION	COUNTY	TOTAL SHEETS	SHEET NO.
VAR	DIST 8 GUARDRAIL 2025-1	VARIOUS	12	4
			CONTRACT NO. 76T58	
		ILLINOIS	FED. AID PROJECT	

MODEL: SOQ-3 (Sheet)  
 FILE NAME: c:\p\work\lewis\lewis\kad097212\0876158-sh-SOQ.dgn

CODE NO.	ITEM	UNIT	TOTAL QUANTITY	CONSTRUCTION CODE		
				STATE	100% STATE MCHDF	100% STATE HTMCD
				NONE	NONE	NONE
				0021	0021	0021
NONE	NONE	NONE				
Z0029657	HIGH TENSION CABLE SYSTEM MAINTENANCE	EACH	300			300
Z0029658	REPAIR TRAFFIC BARRIER TERMINAL TYPE 1 SPECIAL - POST	EACH	160	50	110	
Z0029662	REPLACE HIGH TENSION CABLE GUARDPOST FOUNDATION	EACH	650			650
Z0052410	REPAIR TRAFFIC BARRIER TERMINAL, TYPE 1 SPECIAL (TANGENT)	EACH	115	50	65	
Z0052415	REPAIR TRAFFIC BARRIER TERMINAL, TYPE 1 SPECIAL (FLARED)	EACH	15	7	8	
Z0052600	REPAIR TRAFFIC BARRIER TERMINAL, TYPE 2	EACH	13	6	7	
Z0052800	REPAIR TRAFFIC BARRIER TERMINAL, TYPE 3A	EACH	11	5	6	
Z0053000	REPAIR TRAFFIC BARRIER TERMINAL, TYPE 5	EACH	9	4	5	
Z0053200	REPAIR TRAFFIC BARRIER TERMINAL, TYPE 6	EACH	11	5	6	
Z0059660	REPAIR TRAFFIC BARRIER TERMINAL TYPE 1 SPECIAL - RAIL ELEMENT PLATE	EACH	49	15	34	

REV. - MS

USER NAME = Kevin.Lewis	DESIGNED -	REVISED -	<b>STATE OF ILLINOIS DEPARTMENT OF TRANSPORTATION</b>	<b>SUMMARY OF QUANTITIES</b>			F.A. RTE.	SECTION	COUNTY	TOTAL SHEETS	SHEET NO.
	DRAWN -	REVISED -					VAR	DIST 8 GUARDRAIL 2025-1	VARIOUS	12	5
	CHECKED -	REVISED -		SCALE: SHEET OF 12 SHEETS STA. TO STA.			CONTRACT NO. 76T58				
PLOT DATE = 2/21/2024	DATE -	REVISED -		ILLINOIS FED. AID PROJECT							



FOR INFORMATION ONLY.  
 CONTRACTOR SHALL CONFIRM  
 SYSTEM TYPE PRIOR TO  
 ORDERING MATERIALS.

MODEL: map (Sheet)  
 FILE NAME: c:\p\work\pavilion\lewis\kad0972172\0876158-sh-map.dgn

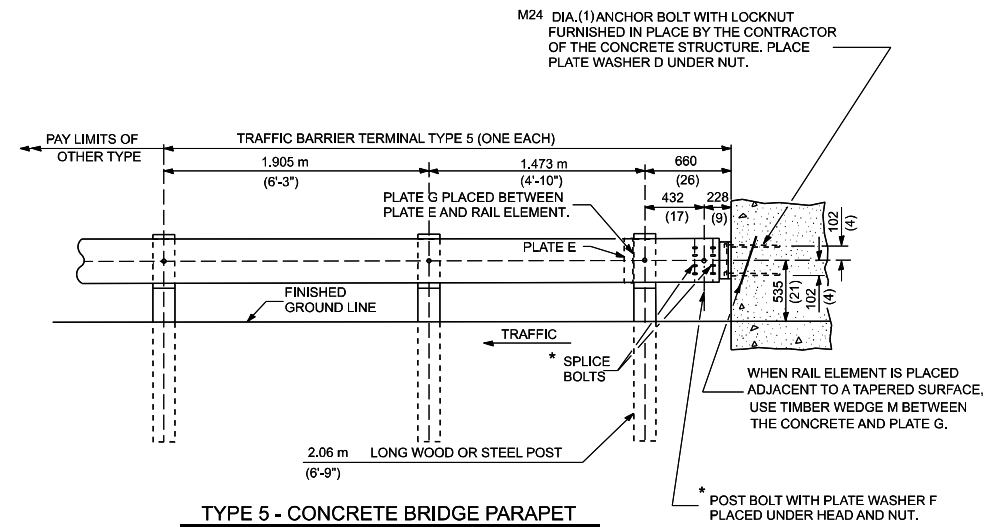
USER NAME = Kevin.Lewis	DESIGNED -	REVISED -
	DRAWN -	REVISED -
	CHECKED -	REVISED -
PLOT DATE = 2/21/2024	DATE -	REVISED -

**STATE OF ILLINOIS  
 DEPARTMENT OF TRANSPORTATION**

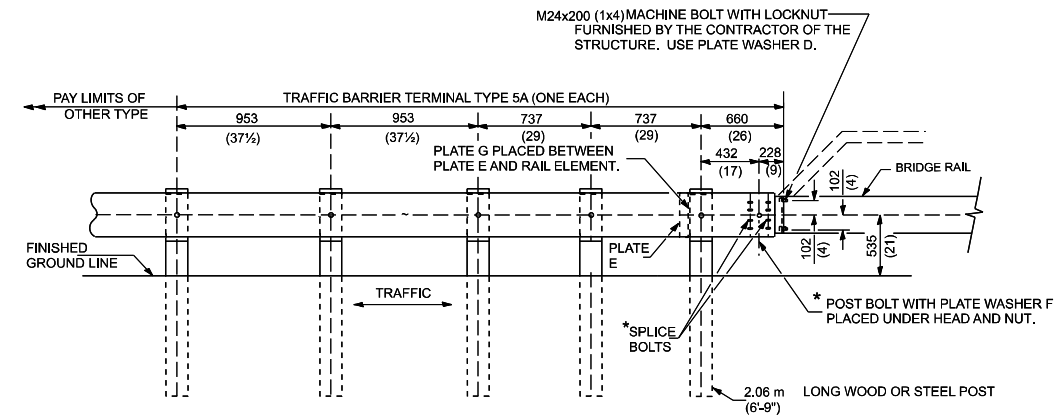
**HIGH TENSION CABLE  
 LOCATION MAP**

SCALE: SHEET OF 12 SHEETS STA. TO STA.

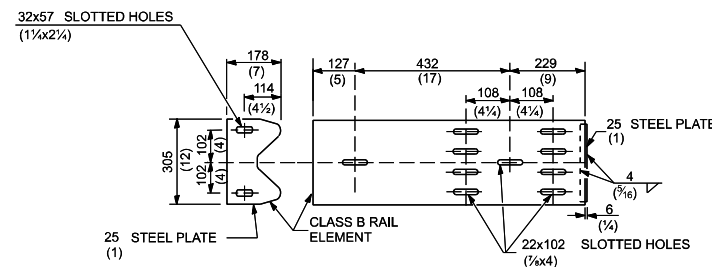
F.A. RTE.	SECTION	COUNTY	TOTAL SHEETS	SHEET NO.
VAR	DIST 8 GUARDRAIL 2025-1	VARIOUS	12	6
			CONTRACT NO. 76T58	
ILLINOIS FED. AID PROJECT				



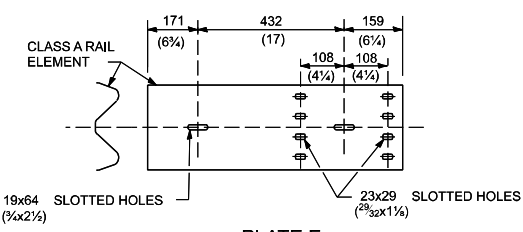
**TYPE 5 - CONCRETE BRIDGE PARAPET**



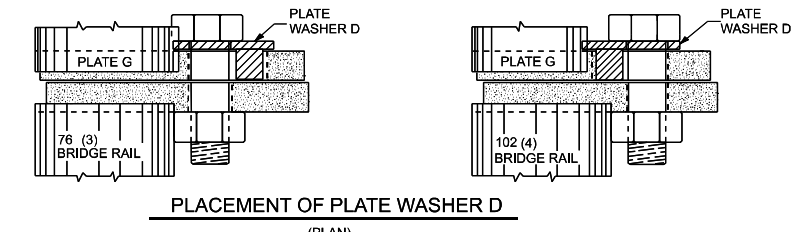
**TYPE 5A - STEEL BRIDGE RAIL**



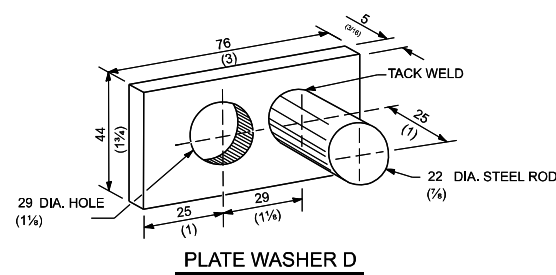
**PLATE G**



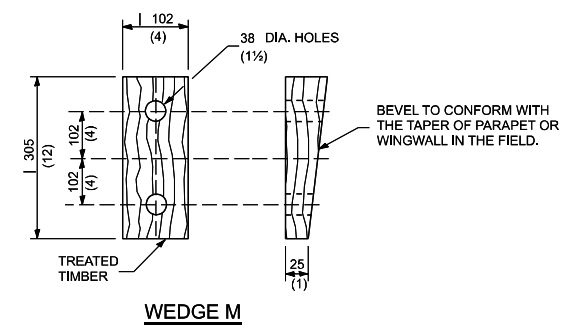
**PLATE E**



**PLACEMENT OF PLATE WASHER D (PLAN)**



**PLATE WASHER D**



**WEDGE M**

**GENERAL NOTES**

INSTALL PLATE WASHER D SO THAT THE 25 mm (1") PROJECTION FILLS THE REMAINDER OF THE SLOTTED HOLES IN THE 25 mm (1") END PLATE ON PLATE G AFTER THE M24 (1") DIA. BOLTS ARE IN PLACE.

\* BOLTS SHALL BE PROVIDED WITH LOCKNUT OR DOUBLE NUT AND SHALL BE TIGHTENED ONLY TO A POINT THAT WILL ALLOW PLATE G TO BE FREE TO MOVE WHEN AN EXPANSION JOINT EXISTS BELOW THE CONNECTOR.

ALL DIMENSIONS ARE IN MILLIMETERS (INCHES) UNLESS OTHERWISE SHOWN.

THIS DETAIL IS APPLICABLE TO THE GUARDRAIL SYSTEM USED PRIOR TO JANUARY 1, 2007. FOR DETAILS ON THE MIDWEST GUARDRAIL SYSTEM, SEE STANDARD 630001.

MODEL: plan sheet (Sheet) FILE NAME: c:\p\work\lewis\skid\0972172\0816758-sh-1.dgn

USER NAME = Kevin.Lewis	DESIGNED -	REVISED -
	DRAWN -	REVISED -
	CHECKED -	REVISED -
PLOT DATE = 2/21/2024	DATE -	REVISED -

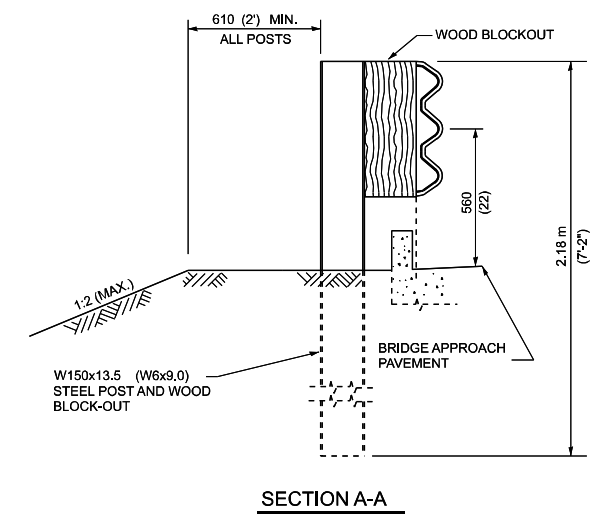
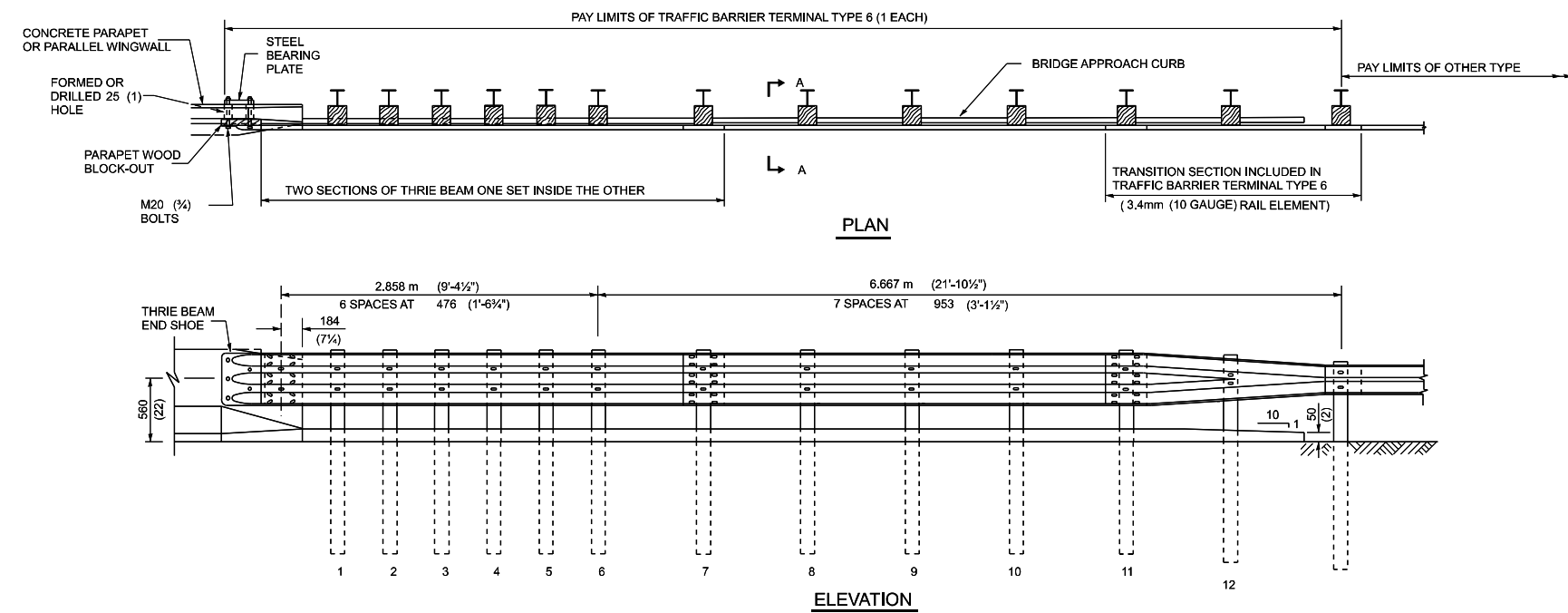
**STATE OF ILLINOIS  
DEPARTMENT OF TRANSPORTATION**

**TRAFFIC BARRIER TERMINAL  
TYPE 5 & 5A**

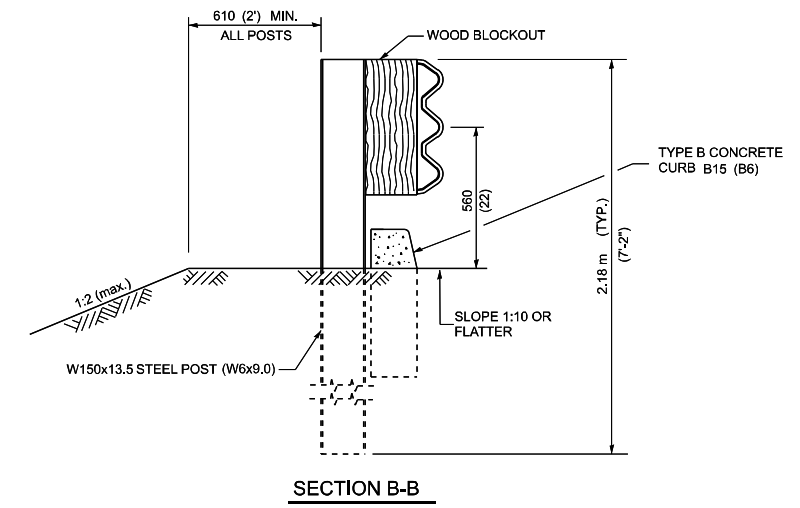
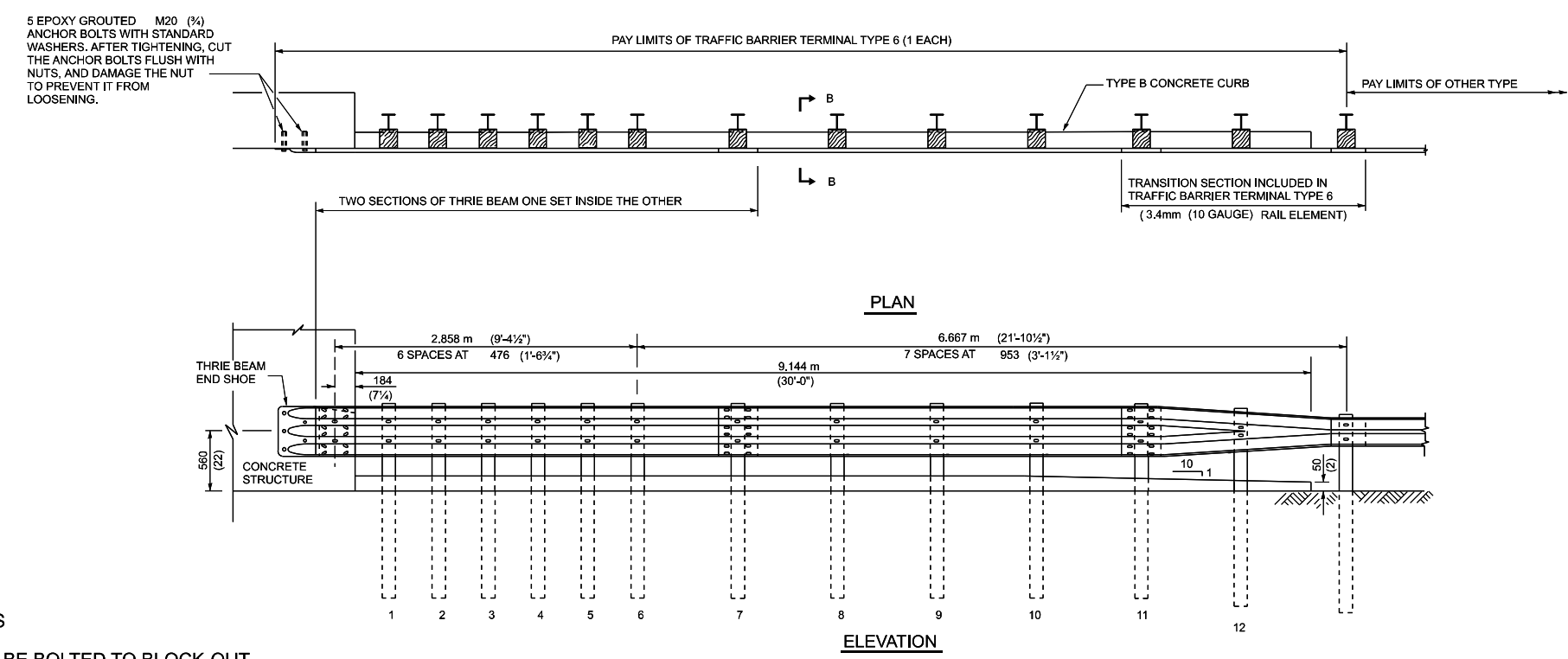
SCALE: SHEET OF 12 SHEETS STA. TO STA.

F.A. RTE.	SECTION	COUNTY	TOTAL SHEETS	SHEET NO.
VAR	DIST 8 GUARDRAIL 2025-1	VARIOUS	12	7
			CONTRACT NO. 76T58	
		ILLINOIS FED. AID PROJECT		

**PARAPET OR WINGWALL**



**OTHER CONCRETE STRUCTURE**



**GENERAL NOTES**

- THREE BEAM RAIL SHALL BE BOLTED TO BLOCK-OUT AT ALL POSTS.
- ALL SLOPE RATIOS ARE EXPRESSED AS UNITS OF VERTICAL DISPLACEMENT TO UNITS OF HORIZONTAL DISPLACEMENT (V:H).
- ALL DIMENSIONS ARE IN MILLIMETERS (INCHES) UNLESS OTHERWISE SHOWN.

THIS DETAIL IS APPLICABLE TO THE GUARDRAIL SYSTEM USED PRIOR TO JANUARY 1, 2007. FOR DETAILS ON THE MIDWEST GUARDRAIL SYSTEM, SEE STANDARD 630001.

MODEL: plan sheet-1 (Sheet) FILE NAME: c:\p\work\lewis\lewis\097212\0876158-sh-1.dwg

USER NAME = Kevin.Lewis	DESIGNED -	REVISED -
	DRAWN -	REVISED -
	CHECKED -	REVISED -
PLOT DATE = 2/21/2024	DATE -	REVISED -

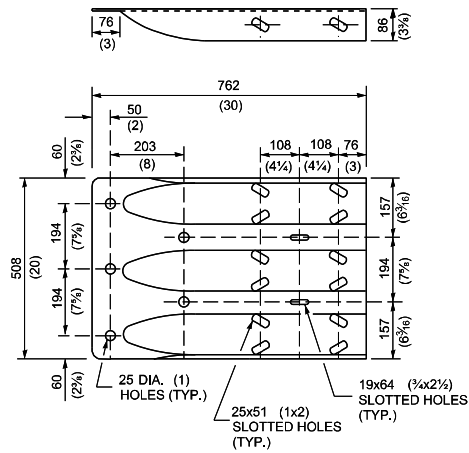
**STATE OF ILLINOIS  
DEPARTMENT OF TRANSPORTATION**

**TRAFFIC BARRIER  
TERMINAL TYPE 6**

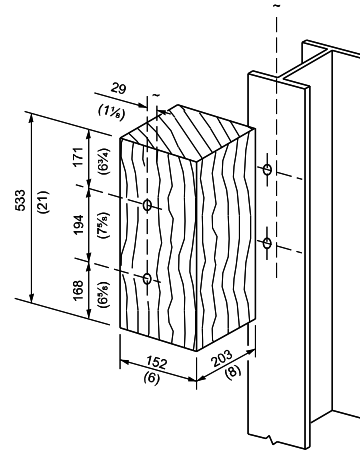
SCALE: SHEET OF 12 SHEETS STA. TO STA.

F.A. RTE.	SECTION	COUNTY	TOTAL SHEETS	SHEET NO.
VAR	DIST 8 GUARDRAIL 2025-1	VARIOUS	12	8
CONTRACT NO. 76T58				
ILLINOIS FED. AID PROJECT				

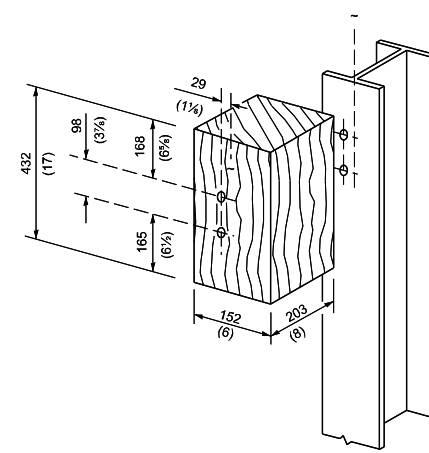




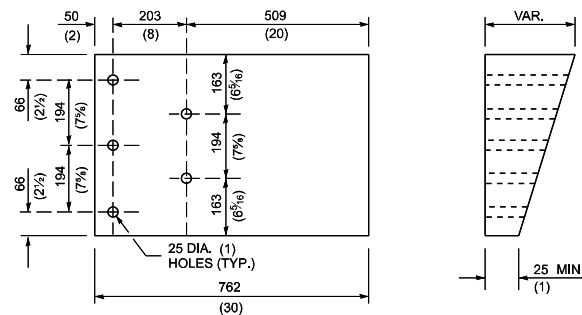
**THRIE BEAM END SHOE DETAIL**



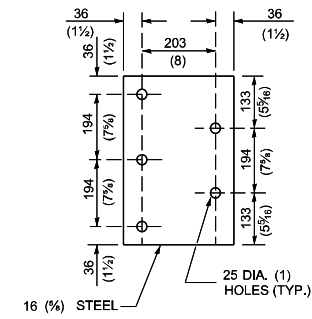
**POSTS 1-11 WOOD BLOCKOUT DETAIL**



**POST 12 WOOD BLOCKOUT DETAIL**



**PARAPET WOOD BLOCK-OUT DETAIL**



**PARAPET STEEL BEARING PLATE DETAIL**

(5 EACH INDIVIDUAL 125x125x16 (5x5x3/4) STEEL PLATES WITH CENTERED 25 (1) HOLES MAY BE SUBSTITUTED FOR THE PLATE SHOWN.)

THIS DETAIL IS APPLICABLE TO THE GUARDRAIL SYSTEM USED PRIOR TO JANUARY 1, 2007. FOR DETAILS ON THE MIDWEST GUARDRAIL SYSTEM, SEE STANDARD 630001.

MODEL: plan sheet2 (Sheet)  
FILE NAME: c:\p\work\lewis\lewis\skad097212\0876155-sh-ham.dgn

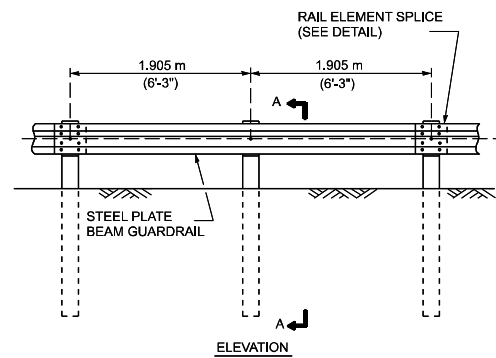
USER NAME = Kevin.Lewis	DESIGNED -	REVISED -
	DRAWN -	REVISED -
	CHECKED -	REVISED -
PLOT DATE = 2/21/2024	DATE -	REVISED -

**STATE OF ILLINOIS  
DEPARTMENT OF TRANSPORTATION**

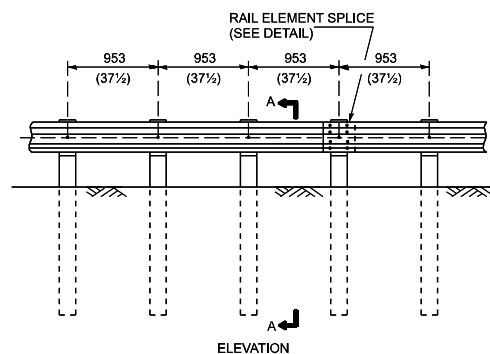
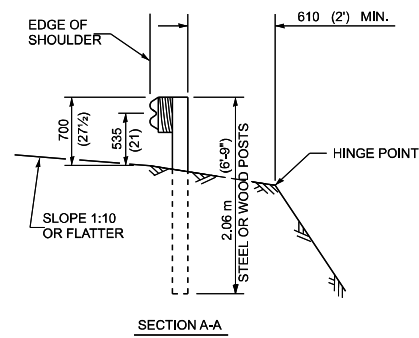
**TRAFFIC BARRIER  
TERMINAL TYPE 6**

SCALE: SHEET OF 12 SHEETS STA. TO STA.

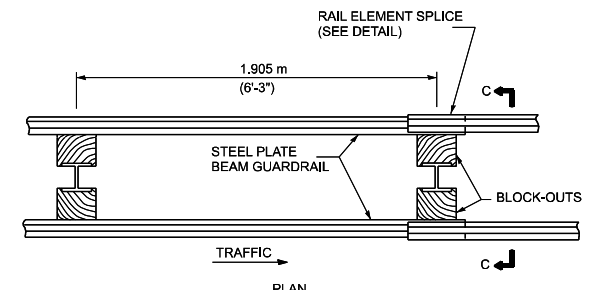
F.A. RTE.	SECTION	COUNTY	TOTAL SHEETS	SHEET NO.
VAR	DIST 8 GUARDRAIL 2025-1	VARIOUS	12	9
CONTRACT NO. 76T58				
ILLINOIS FED. AID PROJECT				



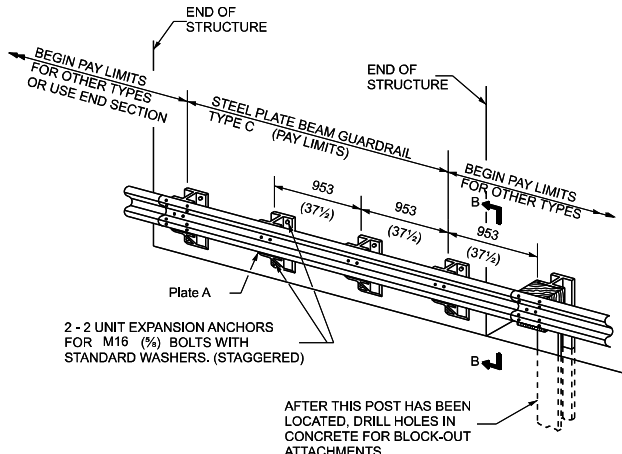
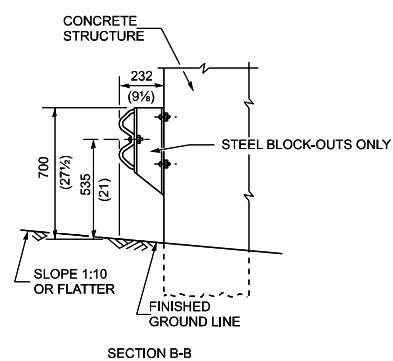
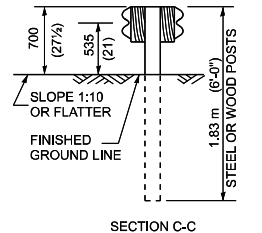
**TYPE A**  
1.905 m (6'-3") TYPICAL POST SPACING



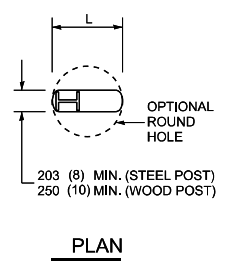
**TYPE B**  
953 (37 1/4) CLOSED POST SPACING



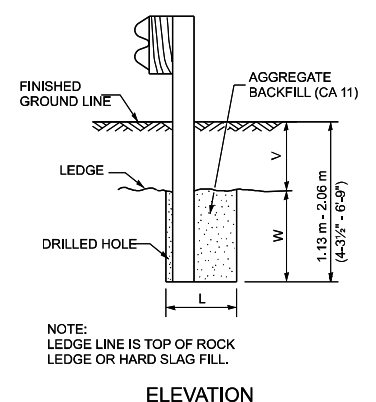
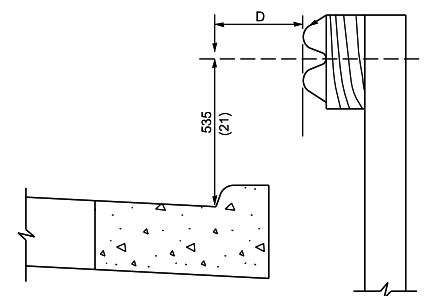
**TYPE D**  
DOUBLE STEEL PLATE BEAM GUARDRAIL  
1.905 m (6'-3") TYPICAL POST SPACING



**TYPE C**  
953 (37 1/4) BLOCK-OUT SPACING



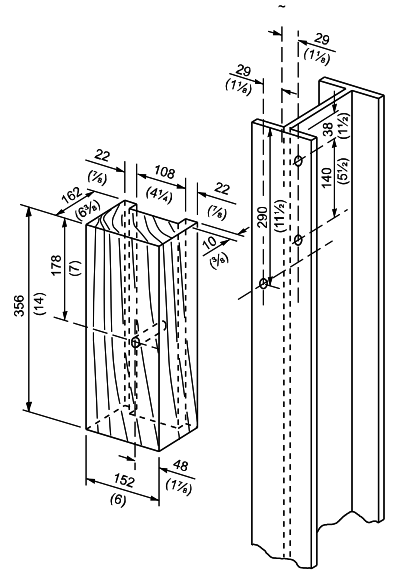
**PLAN**



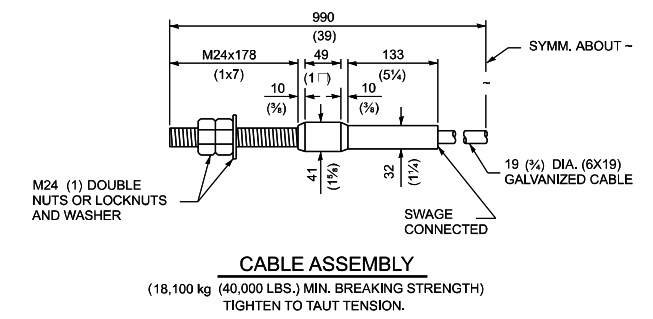
**FOOTING FOR POST WHEN IMPERVIOUS MATERIAL IS ENCOUNTERED**

Note:  
IF IT IS NECESSARY FOR D TO BE MORE THAN 300 (12) AND LESS THAN 3.0 m (10'-0") CURB AND GUTTER (STD. 606001) SHALL BE USED IN FRONT OF AND IN ADVANCE OF THE GUARDRAIL.

**GUARDRAIL PLACED BEHIND CURB**  
(D = 0 DESIRABLE TO 300 (12) MIN.)



**WOOD BLOCK-OUT AND STEEL POST DETAILS**



**CABLE ASSEMBLY**  
(18,100 kg (40,000 LBS.) MIN. BREAKING STRENGTH)  
TIGHTEN TO TAUT TENSION.

V	W	L	
		Steel Post	Wood Post
0 - 460 (0 - 18)	610 (24)	530 (21)	580 (23)
>460 - 825 (>18 - 41.5)	305 (12)	203 (8)	250 (10)
>825 - 1.13 m (>41.5 - 53.5)	305 - 0 (12 - 0)	203 (8)	250 (10)

**GENERAL NOTES**

ALL SLOPE RATIOS ARE EXPRESSED AS UNITS OF VERTICAL DISPLACEMENT TO UNITS OF HORIZONTAL DISPLACEMENT (V:H).

ALL DIMENSIONS ARE IN MILLIMETERS (INCHES) UNLESS OTHERWISE SHOWN.

THE EXISTING STEEL POSTS MAY BE DRILLED TO MATCH THE BOLT PATTERN SHOWN HEREIN FOR THE WOOD BLOCK-OUT, OR A NEW STEEL POST SHALL BE PROVIDED.

THIS DETAIL IS APPLICABLE TO THE GUARDRAIL SYSTEM USED PRIOR TO JANUARY 1, 2007. FOR DETAILS ON THE MIDWEST GUARDRAIL SYSTEM, SEE STANDARD 630001.

MODEL: plan sheet-3 (Sheet) FILE NAME: c:\p\work\lewis\lewis\skad097212\0876158-sh-1.dgn

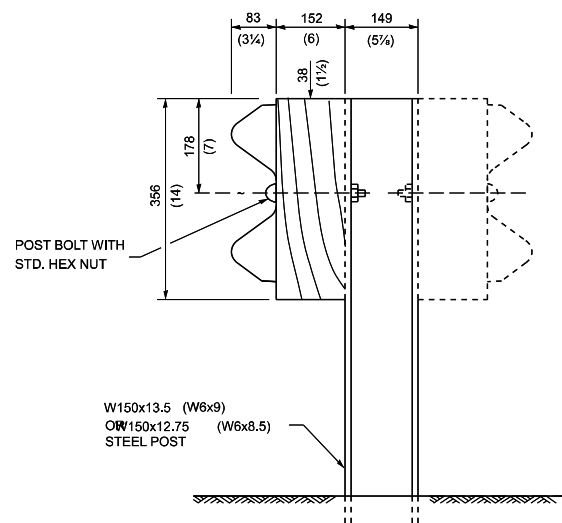
USER NAME = Kevin.Lewis	DESIGNED -	REVISED -
	DRAWN -	REVISED -
	CHECKED -	REVISED -
PLOT DATE = 2/21/2024	DATE -	REVISED -

**STATE OF ILLINOIS  
DEPARTMENT OF TRANSPORTATION**

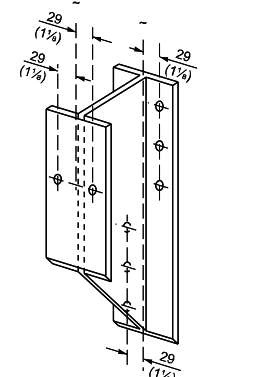
**STEEL PLATE BEAM GUARDRAIL**

SCALE: SHEET OF 12 SHEETS STA. TO STA.

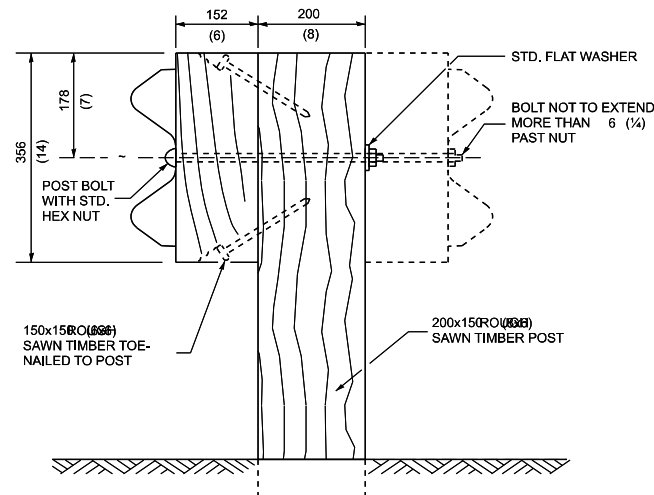
F.A. RTE.	SECTION	COUNTY	TOTAL SHEETS	SHEET NO.
VAR	DIST 8 GUARDRAIL 2025-1	VARIOUS	12	10
CONTRACT NO. 76T58				
ILLINOIS FED. AID PROJECT				



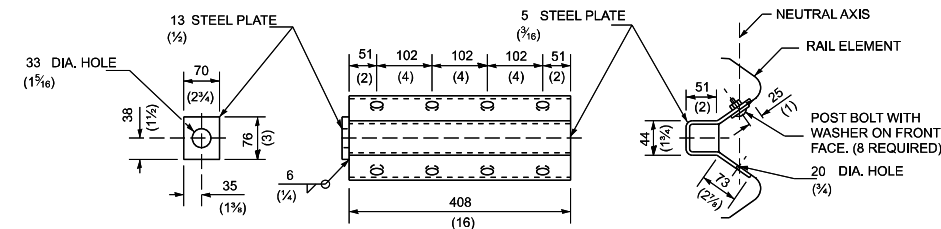
**STEEL POST CONSTRUCTION**



**STEEL BLOCK-OUT DETAIL**

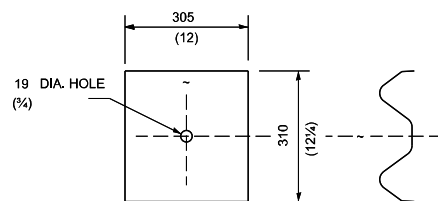


**WOOD POST CONSTRUCTION**



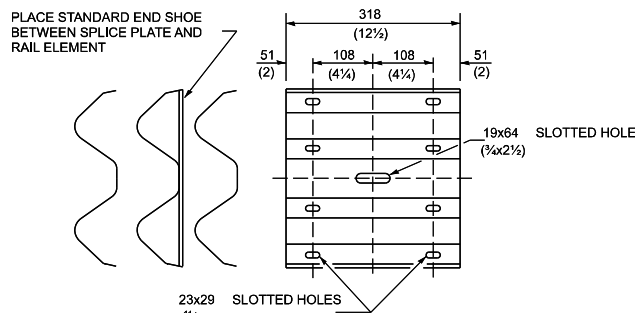
NOTE  
ANCHOR PLATE T SHALL BE USED TO ATTACH CABLE ASSEMBLY TO GUARDRAIL WHEN REQUIRED ON TRAFFIC BARRIER TERMINALS.

**ANCHOR PLATE T DETAILS**

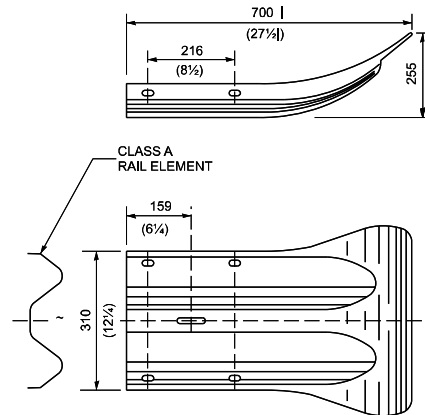


NOTE  
PLATE A SHALL BE PLACED BETWEEN RAIL ELEMENT AND BLOCK-OUT AT NON-SPLICE MOUNTING POINTS ONLY WHEN STEEL BLOCK-OUTS ARE USED.

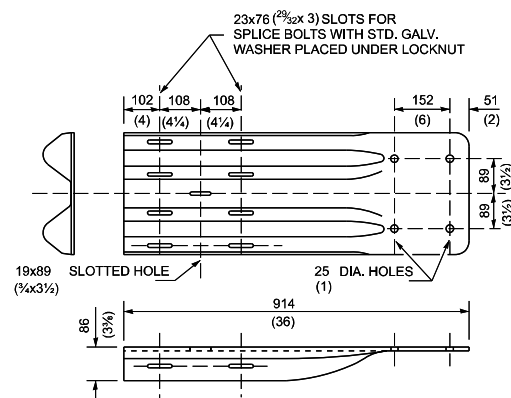
**PLATE A**



**SPLICE PLATE**

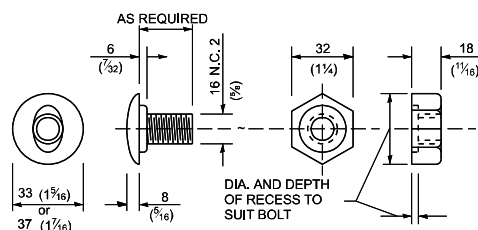


**END SECTION**

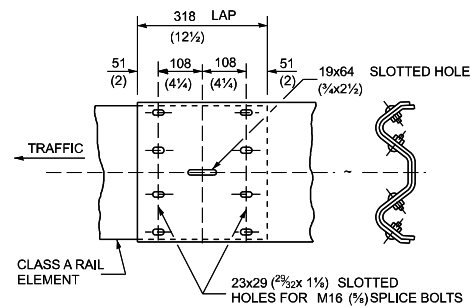


NOTE  
WHEN END SHOE IS ATTACHED TO A BRIDGE PARAPET WHICH HAS AN EXPANSION JOINT, THE BOLTS SHALL BE PROVIDED WITH A LOCKNUT OR DOUBLE NUT AND SHALL BE TIGHTENED ONLY TO A POINT THAT WILL ALLOW GUARDRAIL MOVEMENT.  
THE STANDARD END SHOE SHALL BE ATTACHED TO THE CONCRETE WITH PRE-DRILLED OR SELF-DRILLING ANCHOR BOLTS. THE ANCHOR CONE SHALL BE SET FLUSH WITH THE SURFACE OF THE CONCRETE.  
EXTERNALLY THREADED STUDS PROTRUDING FROM THE SURFACE OF THE CONCRETE WILL NOT BE PERMITTED.

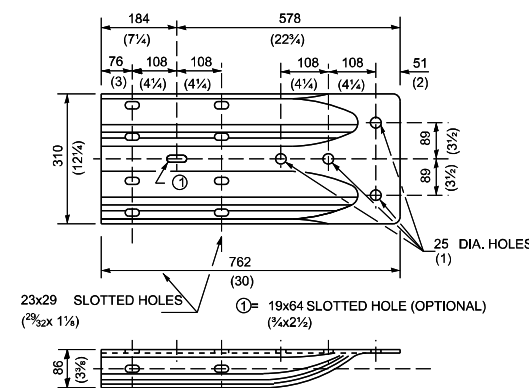
**END SHOE**



**POST OR SPLICE BOLT & NUT**



**RAIL ELEMENT SPLICE**



**ALTERNATE END SHOE**

THIS DETAIL IS APPLICABLE TO THE GUARDRAIL SYSTEM USED PRIOR TO JANUARY 1, 2007. FOR DETAILS ON THE MIDWEST GUARDRAIL SYSTEM, SEE STANDARD 630001.

MODEL: plan sheet-4 [Sheet]  
FILE NAME: c:\p\work\lewis\skad097212\0876158-sh-dam.dgn

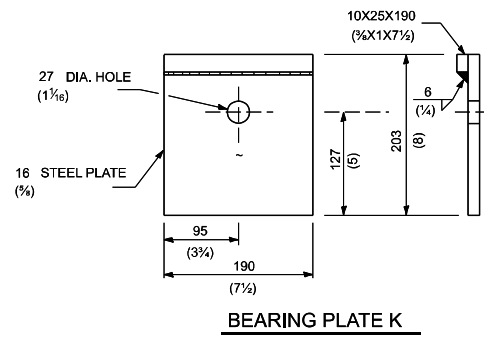
USER NAME = Kevin.Lewis	DESIGNED -	REVISED -
	DRAWN -	REVISED -
	CHECKED -	REVISED -
PLOT DATE = 2/21/2024	DATE -	REVISED -

**STATE OF ILLINOIS  
DEPARTMENT OF TRANSPORTATION**

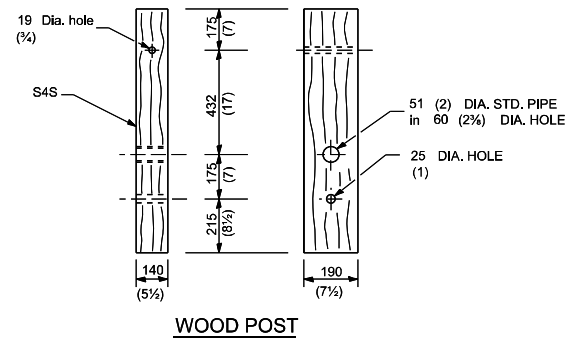
**STEEL PLATE BEAM GUARDRAIL**

SCALE: SHEET OF 12 SHEETS STA. TO STA.

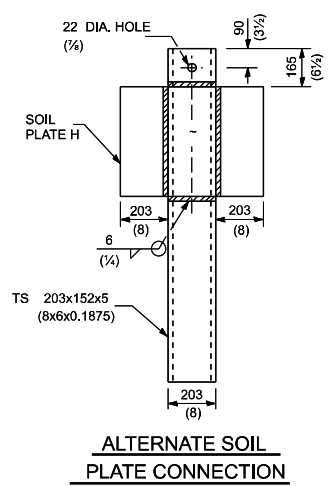
F.A. RTE.	SECTION	COUNTY	TOTAL SHEETS	SHEET NO.
VAR	DIST 8 GUARDRAIL 2025-1	VARIOUS	12	11
CONTRACT NO. 76T58				
ILLINOIS FED. AID PROJECT				



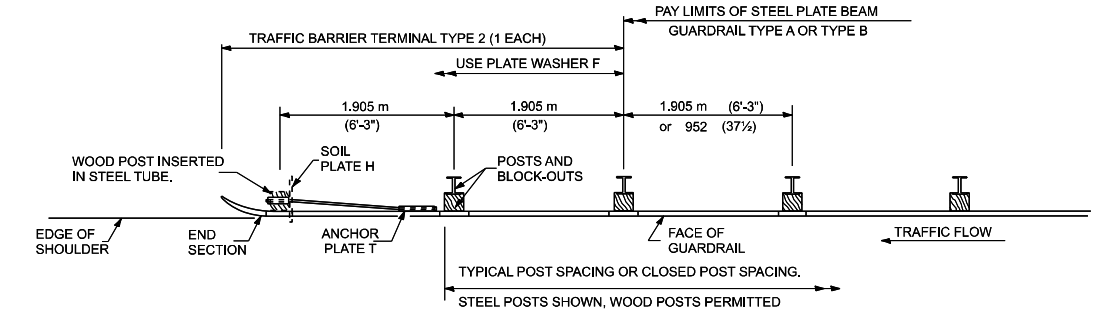
**BEARING PLATE K**



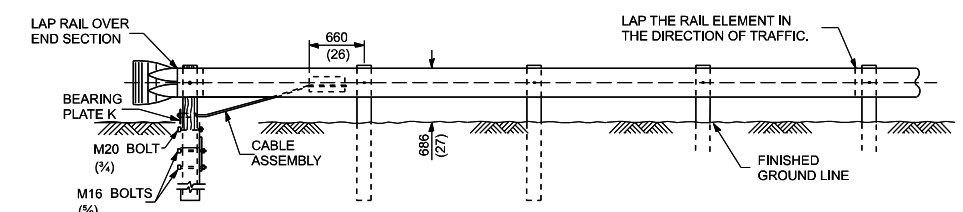
**WOOD POST**



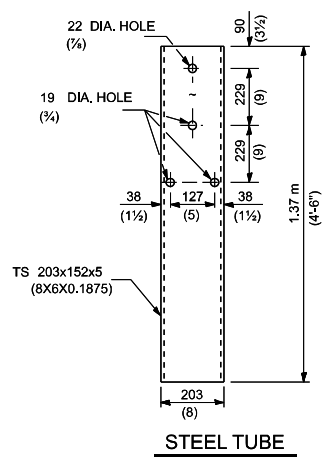
**ALTERNATE SOIL PLATE CONNECTION**



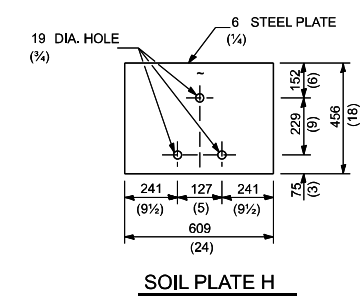
**PLAN**



**ELEVATION**



**STEEL TUBE**



**SOIL PLATE H**

**GENERAL NOTES**

USE PLATE WASHER F AT ALL POSTS.  
 THE BEARING PLATE K SHALL BE HELD IN POSITION BY (2) TWO EIGHT PENNY NAILS DRIVEN INTO THE POST AND BENT OVER THE TOP OF THE PLATE.  
 ALL DIMENSIONS ARE IN MILLIMETERS (INCHES) UNLESS OTHERWISE SHOWN.

THIS DETAIL IS APPLICABLE TO THE GUARDRAIL SYSTEM USED PRIOR TO JANUARY 1, 2007. FOR DETAILS ON THE MIDWEST GUARDRAIL SYSTEM, SEE STANDARD 630001.

MODEL: plan sheet-5 (Sheet)  
 FILE NAME: c:\p\work\lewis\lewis\kld0972172\0876158-sh-Plan.dgn

USER NAME = Kevin.Lewis	DESIGNED -	REVISED -
	DRAWN -	REVISED -
	CHECKED -	REVISED -
PLOT DATE = 2/21/2024	DATE -	REVISED -

**STATE OF ILLINOIS  
 DEPARTMENT OF TRANSPORTATION**

**TRAFFIC BARRIER  
 TERMINAL TYPE 2**

SCALE: SHEET OF 12 SHEETS STA. TO STA.

F.A. RTE.	SECTION	COUNTY	TOTAL SHEETS	SHEET NO.
VAR	DIST 8 GUARDRAIL 2025-1	VARIOUS	12	12
CONTRACT NO. 76T58				
ILLINOIS FED. AID PROJECT				