

STATE OF ILLINOIS  
DEPARTMENT OF TRANSPORTATION

F.A.P. RTE.	SECTION	COUNTY	TOTAL SHEETS	SHEET NO.
327	(15,16-1)PP	MARION	12	1
		ILLINOIS	CONTRACT NO. 76T81	

FOR INDEX OF SHEETS, SEE SHEET NO. 2

# PROPOSED HIGHWAY PLANS

FAP ROUTE 327 (US 50)  
SECTION (15,16-1)PP  
CM PATCHING  
MARION COUNTY

**LOCATION #1: TRAFFIC DATA**

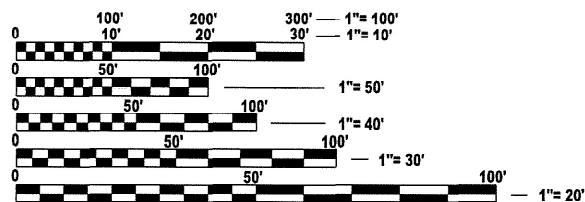
LOCATION	US 50
2024 ADT	11200 (ACTUAL)
2044 ADT	13800 (ESTIMATED)
MU%	8.0
SU%	5.4

**LOCATION #2: TRAFFIC DATA**

LOCATION	US 50
2024 ADT	6800 (ACTUAL)
2044 ADT	8400 (ESTIMATED)
MU%	7.7
SU%	6.6

C-98-117-24

FUNCTIONAL CLASSIFICATION: OTHER PRINCIPAL ARTERIAL



FULL SIZE PLANS HAVE BEEN PREPARED USING STANDARD ENGINEERING SCALES. REDUCED SIZED PLANS WILL NOT CONFORM TO STANDARD SCALES. IN MAKING MEASUREMENTS ON REDUCED PLANS, THE ABOVE SCALES MAY BE USED.

J.U.L.I.E.  
JOINT UTILITY LOCATION INFORMATION FOR EXCAVATION  
1-800-892-0123  
OR 811

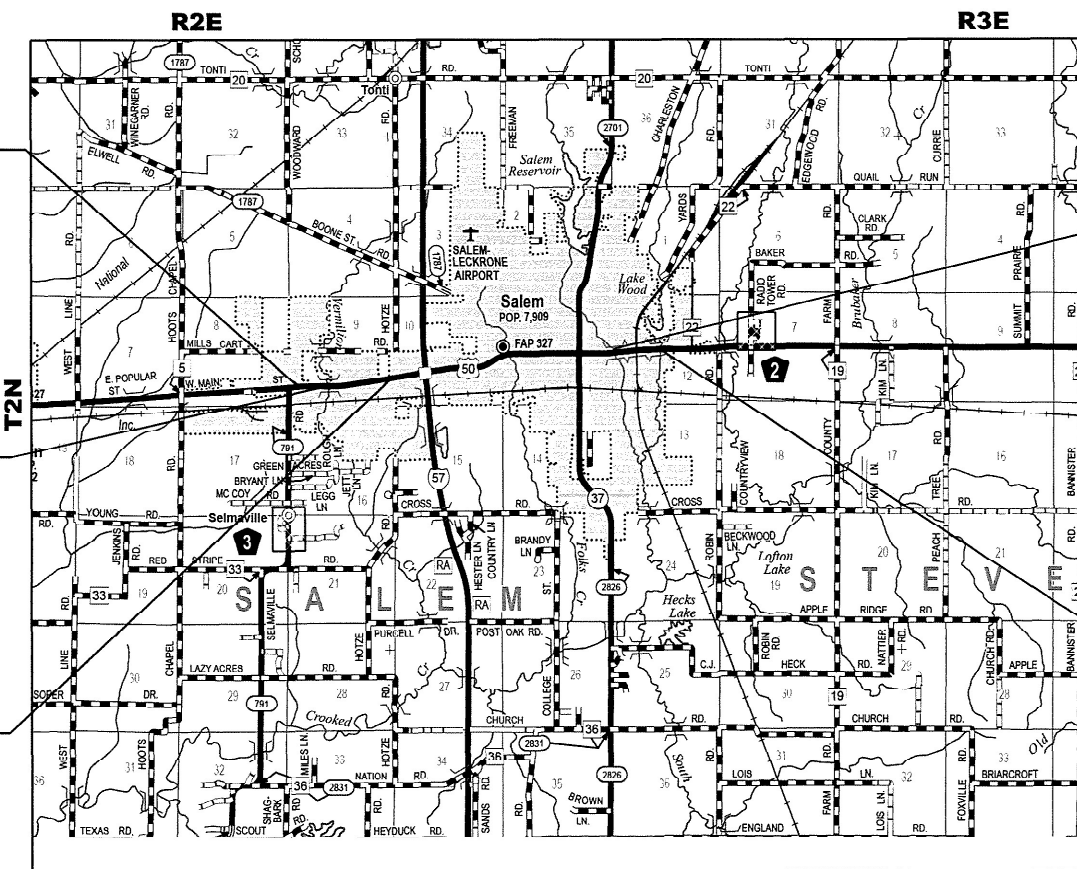
**BEGIN LOCATION #1  
(EXISTING JOINT)**  
STA. 347+40  
LAT: 38.622366  
LONG: -88.993968

**BRIDGE OMISSION:**  
STA. 362+95 TO  
STA. 363+67  
S.N. 061-0081, 72'

**END LOCATION #1  
(EXISTING JOINT)**  
STA. 390+83  
LAT: 38.623522  
LONG: -88.978793

**END LOCATION #2  
(EXISTING JOINT)**  
STA. 1247+42  
LAT: 38.627364  
LONG: -88.937689

**BEGIN LOCATION #2  
(EXISTING JOINT)**  
STA. 1258+37  
LAT: 38.627607  
LONG: -88.933874



NOT TO SCALE

GROSS LENGTH = 5,478 FT. = 1.04 MILE  
NET LENGTH = 5,406 FT. = 1.02 MILE

PROJECT ENGINEER: BILLIE OWEN  
PROJECT MANAGER: MEIWU AN

CONTRACT NO. 76T81

D-98-055-24



LOCATION OF SECTION INDICATED THUS: - [black rectangle] -

STATE OF ILLINOIS  
DEPARTMENT OF TRANSPORTATION

SUBMITTED *March 27, 2024*  
*Kirk H. B.*  
REGIONAL ENGINEER

May 10, 2024 *Scott A. Etk*  
ENGINEER OF DESIGN AND ENVIRONMENT

May 10, 2024 *Stephen M. Smith*  
DIRECTOR OF HIGHWAYS PROJECT IMPLEMENTATION

PRINTED BY THE AUTHORITY  
OF THE STATE OF ILLINOIS

**INDEX OF SHEETS**

- 1. COVER SHEET
- 2. INDEX OF SHEETS, HIGHWAY STANDARDS, GENERAL NOTES AND COMMITMENTS
- 3. SUMMARY OF QUANTITIES
- 4. TYPICAL SECTION
- 5-11. SCHEDULE OF QUANTITIES
- 12. LOCATION MAP

**HIGHWAY STANDARDS**

000001-08	STANDARDS SYMBOLS ABBREVIATIONS & PATTERNS
001001-02	ARES OF REINFORCEMENT BARS
001006	DECIMAL OF INCH & FOOT
420701-03	PAVEMENT WELDED WIRE REINFORCEMENT
442101-09	CLASS B PATCHES
701001-02	OFF ROAD MOVING OPERATIONS, 2L, 2W, MORE THAN 15" AWAY
701006-05	OFF ROAD MOVING OPERATIONS, 2L, 2W, 15' TO 24' FROM PAVEMENT EDGE
701011-04	OFF ROAD MOVING OPERATIONS, 2L, 2W DAY ONLY
701101-05	OFF ROAD OPERATIONS, MULTILANE, 15' TO 24" FROM PAVEMENT EDGE
701301-04	LANE CLOSURE, 2 LANE, 2 WAY, SHORT TIME OPERATIONS
701311-03	LANE CLOSURE 2 LANE, 2 WAY, SLOW MOVING OPERATION, DAY ONLY
701501-06	URBAN LANE CLOSURE, 2L, 2W, UNDIVIDED
701602-10	URBAN LANE CLOSURE, MULTILANE, 2W WITH BIDIRECTIONAL LEFT TURN LANE
701901-09	TRAFFIC CONTROL DEVICES
780001-05	TYPICAL PAVEMENT MARKINGS
781001-04	TYPICAL APPLICATION RAISED REFLECTION PAVEMENT MARKERS

**GENERAL NOTES**

- 1. UTILITIES KNOWN TO HAVE FACILITIES WITHIN THE PROJECT ARES

		AERIAL	BURIED
AMEREN ILLINOIS	(GAS & ELECTRIC)	X	X
AT&T ILLINOIS	(COMMUNICATIONS)	X	X
CHARTER COMMUNICATIONS, INC	(CABLE TV)	X	X
COUNTRYMARK COOPERATIVE, LLP	(PIPELINE)		X
METRO	(COMMUNICATIONS)	X	X
CITY OF SALEM	(WATER, SANITARY SEWER)		X
CITY OF SALEM	(GAS)		X
TRI-COUNTY ELECTRIC COOPERATIVE, INC.	(ELECTRIC)	X	X
WABASH COMMUNICATIONS	(COMMUNICATIONS)	X	X
WINDSTREAM KDL, INC.	(COMMUNICATIONS)	X	X

- 2. NO SURVEY WAS PERFORMED FOR THIS PROJECT AND THE PLANS WERE CREATED USING MICROFLIM AND FIELD MEASUREMENTS.
- 3. THE RESIDENT ENGINEER SHALL VERIFY THE EXISTENCE OF HIGHWAY LIGHTING, INTELLIGENT TRANSPORTATION SYSTEMS (I.T.S.) UTILITIES, AND/OR ELECTRICAL CABLES ASSOCIATED WITH TRAFFIC SIGNALS WITHIN THE PROJECT LIMITS. IF ANY OF THESE EXIST WITHIN THE PROJECT LIMITS, AND IF THESE ITEMS REQUIRE LOCATING, THE CONTRACTOR SHALL BE DIRECTED TO DO SO ACCORDING TO SECTION 803 OF THE STANDARD SPECIFICATIONS. THIS WORK SHALL BE PAID FOR ACCORDING TO ARTICLE 109.04 OF THE STANDARD SPECIFICATIONS.
- 4. ALL TURF AREAS DISTURBED BY THE CONTRACTOR SHALL BE SEEDED WITH THE APPROPRAITE EROSION CONTROL, AS DIRECTED BY THE ENGINEER, AT THE CONTRACTOR'S EXPENSE.
- 5. THE PROPOSED PAVEMENT MARKING SHALL MATCH THE LOCATIONS OF THE EXISTING PAVEMENT MARKING, AS DIRECTED BY THE ENGINEER.
- 6. TWO CHANGEABLE MESSAGE SIGNS SHALL BE PROVIDED ALONG US 50 TO ALERT DRIVERS OF THE UPCOMING ROAD CONSTRUCTION. CHANGEABLE MESSAGE SIGNS SHALL BE PLACED 14 DAYS PRIOR TO BEGINNING WORK. EXACT LOCATIONS OF THE CHANGEABLE MESSAGE SIGNS SHALL BE DETERMINED BY THE ENGINEER.
- 7. NO OVERNIGHT LANE CLOSURE WILL BE ALLOWED AT LOCATION #2.
- 8. THE CONTRACTOR SHALL BE ALLOWED TO USE HIGH EARLY STRENGTH CONCRETE FOR THE PATCHING AS DIRECTED BY THE ENGINEER.

**MIXTURE REQUIREMENTS**

ROUTE	FAP 327 (US 50)
SECTION	(15,16-1)PP
COUNTY	MARION
CONTRACT	76T81

DESCRIPTION	CM - PAVEMENT PATCHING OF US 50 FROM (L1) 0.1 MILES EAST OF SELMAVILLE RD. TO 0.2 MILES EAST OF BALDRIDGE LN & (L2) 0.1 MILES WEST OF WEYMEYER AVE TO 0.1 MILES WEST OF LACKEY ST.
-------------	--

ADT (CONSTRUCTION YR.):	11200
MU%	8
SU%	6.6
20 YR, ESAL'S	6.43

MIXTURE USE	PARTIAL DEPTH PATCH
AC/PG	PG 64-22
DESIGN AIR VOIDS	4.0% @ Ndes=90
MIX COMPOSTION (Gradation)	IL 9.5
FRICITION AGG	MIXTURE "D"
QUALITY MGMT PROGRAM	QC/QA
MatTranDev Required?	NO

PLAN QUANTITIES FOR HOT-MIX-ASPHALT ITEMS ARE CALCULATED USING A UNIT WEIGHT OF 112 LB/SQ YD/IN.

**COMMITMENTS**

NONE

**STATE OF ILLINOIS  
DEPARTMENT OF TRANSPORTATION**

**INDEX OF SHEETS, HIGHWAY STANDARDS, GENERAL NOTES,  
MIXTURES REQUIREMENTS, COMMITMENTS**

SCALE: 50 SHEET 1 OF 1 SHEETS STA. TO STA.

F.A.P RTE.	SECTION	COUNTY	TOTAL SHEETS	SHEET NO.
327	(15,16-1)PP	MARION	12	2
			CONTRACT NO. 76T81	
ILLINOIS FED. AID PROJECT				

MODEL: GN (Sheet)  
FILE NAME: c:\p\work\p\miller\ra\0958866\0676781-shl-egmncle.dgn

USER NAME =	Rahshun.Miller	DESIGNED -	REVISED -
		DRAWN -	REVISED -
		CHECKED -	REVISED -
PLOT DATE =	3/19/2024	DATE -	REVISED -

CODE NO.	ITEM	UNIT	TOTAL QUANTITY	CONSTR. CODE
				100% STATE
				ROADWAY 0006 URBAN
44200050	WELDED WIRE REINFORCEMENT	SQ YD	499	499
44200982	CLASS B PATCHES, TYPE II, 11 INCH	SQ YD	1372	1372
44200986	CLASS B PATCHES, TYPE III, 11 INCH	SQ YD	291	291
44200988	CLASS B PATCHES, TYPE IV, 11 INCH	SQ YD	208	208
44201299	DOWEL BARS 1 1/2"	EACH	3420	3420
44213200	SAW CUTS	FOOT	11049	11049
44213204	TIE BARS 3/4"	EACH	52	52
67000400	ENGINEER'S FIELD OFFICE, TYPE A	CAL MO	3	3
67100100	MOBILIZATION	L SUM	1	1
70102620	TRAFFIC CONTROL AND PROTECTION, STANDARD 701501	L SUM	1	1
70102632	TRAFFIC CONTROL AND PROTECTION, STANDARD 701602	L SUM	1	1
70107025	CHANGEABLE MESSAGE SIGN	CAL DA	45	45
70300100	SHORT TERM PAVEMENT MARKING	FOOT	2806	2806
70300150	SHORT TERM PAVEMENT MARKING REMOVAL	SQ FT	1247	1247

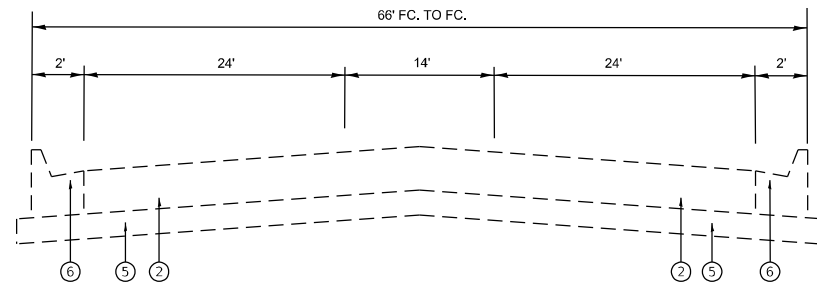
CODE NO.	ITEM	UNIT	TOTAL QUANTITY	CONSTR. CODE
				100% STATE
				ROADWAY 0006 URBAN
78001110	PAINT PAVEMENT MARKING - LINE 4"	FOOT	2806	2806
78300200	RAISED REFLECTIVE PAVEMENT MARKER REMOVAL	EACH	35	35
X4406020	PARTIAL DEPTH REMOVAL, TYPE I, 2"	SQ YD	353	353
X4406220	PARTIAL DEPTH REMOVAL, TYPE II, 2"	SQ YD	471	471
X4406420	PARTIAL DEPTH REMOVAL, TYPE III, 2"	SQ YD	372	372
X4406620	PARTIAL DEPTH REMOVAL, TYPE IV, 2"	SQ YD	701	701
Ø Z0076604	TRAINEES TRAINING PROGRAM GRADUATE	HOUR	500	500
X4121000	PARTIAL DEPTH PATCHING	TON	212	212

Ø 0042

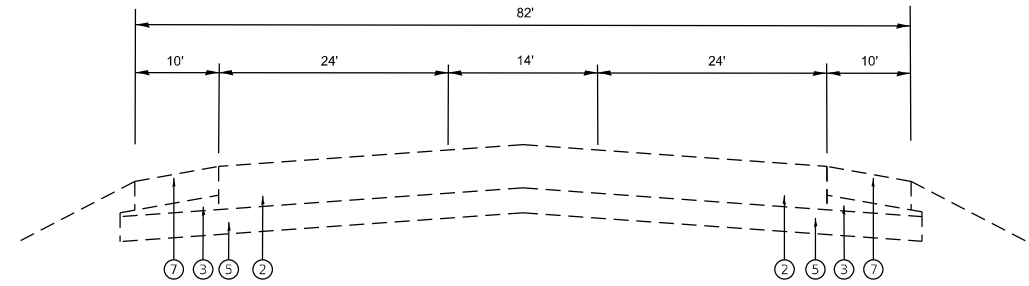
MODEL: SQO (Sheet)  
FILE NAME: c:\p\work\p\miller\ra\098866\0876781-sht-SQO.dgn

REV. - MS

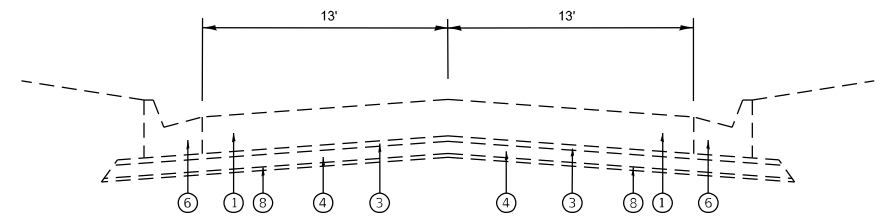
USER NAME = Rahshun.Miller	DESIGNED -	REVISED -	STATE OF ILLINOIS DEPARTMENT OF TRANSPORTATION	SUMMARY OF QUANTITIES			F.A.P. RTE. 327	SECTION (15,16-1)PP	COUNTY MARION	TOTAL SHEETS 12	SHEET NO. 3
	DRAWN -	REVISED -		SCALE:	SHEET 1	OF 1	SHEETS	STA.	TO STA.	CONTRACT NO. 76T81	
	CHECKED -	REVISED -		ILLINOIS FED. AID PROJECT							
PLOT DATE = 3/22/2024	DATE -	REVISED -									



LOCATION #1  
EXISTING TYPICAL SECTION  
STA. 347+40 TO STA. 361+06



LOCATION #1  
EXISTING TYPICAL SECTION  
STA. 361+06 TO STA. 362+95  
BRIDGE OMISSION: STA. 362+95 TO STA. 363+67  
STA. 363+67 TO STA. 390+83



LOCATION #2  
EXISTING TYPICAL SECTION  
STA. 1247+42 TO STA. 1258+37

**LEGEND**

- ① EXISTING P.C.C. PAVEMENT 9"
- ② EXISTING PORTLAND CEMENT CONCRETE PAVEMENT 11"
- ③ EXISTING SUB-BASE GRANULAR MATERIAL, TYPE C, 4"
- ④ EXISTING SUB-BASE GRANULAR MATERIAL, TYPE C, 12"
- ⑤ EXISTING LIME MODIFIED SOIL 12"
- ⑥ EXISTING COMBINATION CONCRETE CURB & GUTTER, TYPE B-6.24
- ⑦ EXISTING HMA SHOULDERS 8"
- ⑧ EXISTING GEOTECHNICAL FABRIC FOR FRENCH DRAINS

MODEL: Typical (Sheet)  
FILE NAME: c:\p\work\miller\ra\095866\095866.dwg

USER NAME = Rahshun.Miller	DESIGNED -	REVISED -
	DRAWN -	REVISED -
	CHECKED -	REVISED -
PLOT DATE = 3/22/2024	DATE -	REVISED -

**STATE OF ILLINOIS  
DEPARTMENT OF TRANSPORTATION**

**TYPICAL SECTION**

SCALE: SHEET 1 OF 1 SHEETS STA. TO STA.

F.A.P. RTE.	SECTION	COUNTY	TOTAL SHEETS	SHEET NO.
327	(15,16-1)PP	MARION	12	4
CONTRACT NO. 76T81				
ILLINOIS FED. AID PROJECT				

**CLASS B PATCHING SCHEDULE 11" (LOCATION 1 EASTBOUND) #1**

STATION	LANE DRIVE/PASS	LENGTH	WIDTH	TYPE II	TYPE III	TYPE IV	DOWEL BARS	TIE BAR	WELDED WIRE REINFORCEMENT	SAW CUTS
		FOOT	FOOT	SQ YDS	SQ YDS	SQ YDS	EACH	EACH	SQ YDS	FOOT
347+40	EBPL	6	12	8.0	0.0	0.0	18	0	0.0	54
347+60	EBDL	6	12	8.0	0.0	0.0	18	0	0.0	54
347+60	EBPL	6	12	8.0	0.0	0.0	18	0	0.0	54
348+11	EBPL	6	12	8.0	0.0	0.0	18	0	0.0	54
349+00	EBPL	6	12	8.0	0.0	0.0	18	0	0.0	54
349+58	EPDL	6	12	8.0	0.0	0.0	18	0	0.0	54
349+72	EBDL	6	12	8.0	0.0	0.0	18	0	0.0	54
356+02	EBPL	6	12	8.0	0.0	0.0	18	0	0.0	54
358+00	EBDL	6	12	8.0	0.0	0.0	18	0	0.0	54
358+46	EBDL	6	12	8.0	0.0	0.0	18	0	0.0	54
358+46	EBPL	6	12	8.0	0.0	0.0	18	0	0.0	54
358+90	EBDL	6	12	8.0	0.0	0.0	18	0	0.0	54
358+90	EBPL	6	12	8.0	0.0	0.0	18	0	0.0	54
359+35	EBDL	6	12	8.0	0.0	0.0	18	0	0.0	54
359+35	EBPL	6	12	8.0	0.0	0.0	18	0	0.0	54
359+80	EBPL	6	12	8.0	0.0	0.0	18	0	0.0	54
360+14	EBDL	20	12	0.0	0.0	26.7	18	7	26.7	96
360+68	EBDL	15	12	0.0	20.0	0.0	18	0	20.0	81
365+60	EBDL	20	12	0.0	0.0	26.7	18	7	26.7	96
366+70	EBPL	15	12	0.0	20.0	0.0	18	0	20.0	81
369+00	EBDL	6	12	8.0	0.0	0.0	18	0	0.0	54
371+00	EBPL	16	12	0.0	21.3	0.0	18	0	21.3	84
372+53	EBPL	6	12	8.0	0.0	0.0	18	0	0.0	54
372+84	EBPL	18	12	0.0	24.0	0.0	18	0	24.0	90
373+90	EBPL	6	12	8.0	0.0	0.0	18	0	0.0	54
374+35	EBPL	6	12	8.0	0.0	0.0	18	0	0.0	54
375+75	EBDL	6	12	8.0	0.0	0.0	18	0	0.0	54
376+26	EBPL	6	12	8.0	0.0	0.0	18	0	0.0	54
376+50	EBPL	6	12	8.0	0.0	0.0	18	0	0.0	54
<b>EASTBOUND SUB TOTAL #1:</b>				<b>184</b>	<b>85</b>	<b>53</b>	<b>522</b>	<b>13</b>	<b>139</b>	<b>1770</b>

MODEL: SOQ (Sheet)  
FILE NAME: c:\p\work\p\vision\miller\ra\0958866\0678181-sht-schedule.dgn

USER NAME = Rahshun.Miller	DESIGNED -	REVISED -
	DRAWN -	REVISED -
	CHECKED -	REVISED -
PLOT DATE = 3/22/2024	DATE -	REVISED -

**STATE OF ILLINOIS  
DEPARTMENT OF TRANSPORTATION**

**SCHEDULE OF QUANTITIES  
CLASS B PATCHING LOCATION 1 EASTBOUND #1**

SCALE: 50 SHEET 1 OF 7 SHEETS STA. TO STA.

F.A.P. RTE.	SECTION	COUNTY	TOTAL SHEETS	SHEET NO.
327	(15,16-1)PP	MARION	12	5
CONTRACT NO. 76T81				
ILLINOIS FED. AID PROJECT				

CLASS B PATCHING SCHEDULE 11" (LOCATION 1 EASTBOUND) #2										
STATION	LANE DRIVE / PASS	LENGTH	WIDTH	TYPE II	TYPE III	TYPE IV	DOWEL BARS	TIE BAR	WELDED WIRE REINFORCEMENT	SAW CUTS
		FOOT	FOOT	SQ YDS	SQ YDS	SQ YDS	EACH	EACH	SQ YDS	FOOT
376+66	EBPL	6	12	8	0	0	18	0	0	54
377+41	EBDL	6	12	8	0	0	18	0	0	54
377+59	EBDL	6	12	8	0	0	18	0	0	54
378+60	EBPL	6	12	8	0	0	18	0	0	54
378+80	EBDL	6	12	8	0	0	18	0	0	54
379+96	EBDL	6	12	8	0	0	18	0	0	54
380+45	EBDL	6	12	8	0	0	18	0	0	54
380+60	EBDL	6	12	8	0	0	18	0	0	54
381+50	EBDL	6	12	8	0	0	18	0	0	54
381+65	EBPL	6	12	8	0	0	18	0	0	54
381+84	EBPL	12	12	0	16	0	18	0	16	72
382+12	EBPL	6	12	8	0	0	18	0	0	54
382+27	EBDL	6	12	8	0	0	18	0	0	54
382+73	EBPL	6	12	8	0	0	18	0	0	54
383+46	EBDL	6	12	8	0	0	18	0	0	54
384+12	EBDL	6	12	8	0	0	18	0	0	54
384+12	EBPL	6	12	8	0	0	18	0	0	54
385+02	EBPL	6	12	8	0	0	18	0	0	54
385+51	EBDL	6	12	8	0	0	18	0	0	54
385+81	EBPL	6	12	8	0	0	18	0	0	54
386+55	EBDL	6	12	8	0	0	18	0	0	54
386+70	EBDL	6	12	8	0	0	18	0	0	54
387+09	EBDL	6	12	8	0	0	18	0	0	54
387+22	EBDL	6	12	8	0	0	18	0	0	54
387+65	EBPL	15	12	0	20	0	18	0	20	81
387+77	EBDL	6	12	8	0	0	18	0	0	54
388+16	EBDL	11	12	14.7	0	0	18	0	0	69
388+27	EBPL	6	12	8	0	0	18	0	0	54
388+70	EBPL	6	12	8	0	0	18	0	0	54
388+70	EBDL	6	12	8	0	0	18	0	0	54
388+84	EBPL	6	12	8	0	0	18	0	0	54
388+84	EBDL	50	12	0	0	66.7	18	16.7	66.7	186
389+48	EBPL	13	12	0	17.3	0	18	0	17.3	75
389+78	EBPL	15	12	0	20	0	18	0	20	81
389+93	EBDL	15	12	0	20	0	18	0	20	81
390+38	EBDL	25	12	0	0	33.3	18	8.3	33.3	111
EASTBOUND SUB TOTAL #2 :				238.7	93.3	100.0	648.0	25.0	193.3	2268.0
EASTBOUND SUB TOTAL #1 :				184.0	85.3	53.3	522.0	13.3	138.7	1770.0
EASTBOUND TOTAL :				422.7	178.7	153.3	1170.0	38.3	332.0	4038.0

MODEL: SQC-1 (Sheet)  
FILE NAME: c:\pwworking\miller\ra0958866\0958866\0958866.dgn

USER NAME = Rahshun.Miller	DESIGNED -	REVISED -
	DRAWN -	REVISED -
	CHECKED -	REVISED -
PLOT DATE = 3/22/2024	DATE -	REVISED -

**STATE OF ILLINOIS  
DEPARTMENT OF TRANSPORTATION**

SCHEDULE OF QUANTITIES			
CLASS B PATCHING LOCATION 1 EASTBOUND #2			
SCALE:	SHEET 2 OF 7 SHEETS	STA.	TO STA.

F.A.P. RTE.	SECTION	COUNTY	TOTAL SHEETS	SHEET NO.
327	(15,16-1)PP	MARION	12	6
			CONTRACT NO. 76T81	
		ILLINOIS FED. AID PROJECT		

**CLASS B PATCHING SCHEDULE 11" (LOCATION 1 WESTBOUND) #1**

STATION	LANE DRIVE/PASS	LENGTH	WIDTH	TYPE II	TYPE III	TYPE IV	DOWEL BARS	TIE BAR	WELDED WIRE REINFORCEMENT	SAW CUTS
		FOOT	FOOT	SQ YDS	SQ YDS	SQ YDS	EACH	EACH	SQ YDS	FOOT
391+00	WBDL	6	12	8.0	0.0	0.0	18.0	0.0	0.0	54.0
390+89	WBDL	14	12	0.0	18.7	0.0	18.0	0.0	18.7	78.0
390+75	WBDL	6	12	8.0	0.0	0.0	18.0	0.0	0.0	54.0
390+71	WBDL	41	12	0.0	0.0	54.7	18.0	13.7	54.7	159.0
390+30	WBDL	6	12	8.0	0.0	0.0	18.0	0.0	0.0	54.0
390+30	WBPL	6	12	8.0	0.0	0.0	18.0	0.0	0.0	54.0
390+26	WBDL	14	12	0.0	18.7	0.0	18.0	0.0	18.7	78.0
389+85	WBDL	6	12	8.0	0.0	0.0	18.0	0.0	0.0	54.0
389+85	WBPL	6	12	8.0	0.0	0.0	18.0	0.0	0.0	54.0
389+71	WBDL	6	12	8.0	0.0	0.0	18.0	0.0	0.0	54.0
389+39	WBDL	6	12	8.0	0.0	0.0	18.0	0.0	0.0	54.0
389+39	WBPL	6	12	8.0	0.0	0.0	18.0	0.0	0.0	54.0
388+93	WBDL	6	12	8.0	0.0	0.0	18.0	0.0	0.0	54.0
388+80	WBPL	6	12	8.0	0.0	0.0	18.0	0.0	0.0	54.0
386+67	WBDL	6	12	8.0	0.0	0.0	18.0	0.0	0.0	54.0
386+22	WBDL	6	12	8.0	0.0	0.0	18.0	0.0	0.0	54.0
385+75	WBDL	6	12	8.0	0.0	0.0	18.0	0.0	0.0	54.0
385+31	WBDL	6	12	8.0	0.0	0.0	18.0	0.0	0.0	54.0
384+85	WBDL	6	12	8.0	0.0	0.0	18.0	0.0	0.0	54.0
382+13	WBDL	6	12	8.0	0.0	0.0	18.0	0.0	0.0	54.0
379+40	WBDL	6	12	8.0	0.0	0.0	18.0	0.0	0.0	54.0
379+12	WBDL	6	12	8.0	0.0	0.0	18.0	0.0	0.0	54.0
378+93	WBDL	6	12	8.0	0.0	0.0	18.0	0.0	0.0	54.0
378+48	WBDL	6	12	8.0	0.0	0.0	18.0	0.0	0.0	54.0
378+00	WBDL	6	12	8.0	0.0	0.0	18.0	0.0	0.0	54.0
377+56	WBDL	6	12	8.0	0.0	0.0	18.0	0.0	0.0	54.0
376+64	WBDL	6	12	8.0	0.0	0.0	18.0	0.0	0.0	54.0
376+20	WBDL	6	12	8.0	0.0	0.0	18.0	0.0	0.0	54.0
375+73	WBDL	6	12	8.0	0.0	0.0	18.0	0.0	0.0	54.0
375+30	WBDL	6	12	8.0	0.0	0.0	18.0	0.0	0.0	54.0
375+12	WBDL	6	12	8.0	0.0	0.0	18.0	0.0	0.0	54.0
374+95	WBDL	6	12	8.0	0.0	0.0	18.0	0.0	0.0	54.0
374+82	WBDL	6	12	8.0	0.0	0.0	18.0	0.0	0.0	54.0
374+66	WBDL	6	12	8.0	0.0	0.0	18.0	0.0	0.0	54.0
374+50	WBDL	6	12	8.0	0.0	0.0	18.0	0.0	0.0	54.0
374+36	WBDL	6	12	8.0	0.0	0.0	18.0	0.0	0.0	54.0
374+20	WBDL	6	12	8.0	0.0	0.0	18.0	0.0	0.0	54.0
374+05	WBDL	6	12	8.0	0.0	0.0	18.0	0.0	0.0	54.0
373+90	WBDL	6	12	8.0	0.0	0.0	18.0	0.0	0.0	54.0
373+75	WBDL	6	12	8.0	0.0	0.0	18.0	0.0	0.0	54.0
373+60	WBDL	6	12	8.0	0.0	0.0	18.0	0.0	0.0	54.0
373+45	WBDL	6	12	8.0	0.0	0.0	18.0	0.0	0.0	54.0
373+28	WBDL	6	12	8.0	0.0	0.0	18.0	0.0	0.0	54.0
373+15	WBDL	6	12	8.0	0.0	0.0	18.0	0.0	0.0	54.0
373+00	WBDL	6	12	8.0	0.0	0.0	18.0	0.0	0.0	54.0
372+85	WBDL	6	12	8.0	0.0	0.0	18.0	0.0	0.0	54.0
372+68	WBDL	6	12	8.0	0.0	0.0	18.0	0.0	0.0	54.0
372+53	WBDL	6	12	8.0	0.0	0.0	18.0	0.0	0.0	54.0
372+38	WBDL	6	12	8.0	0.0	0.0	18.0	0.0	0.0	54.0
372+23	WBDL	6	12	8.0	0.0	0.0	18.0	0.0	0.0	54.0
372+06	WBDL	6	12	8.0	0.0	0.0	18.0	0.0	0.0	54.0
371+92	WBDL	6	12	8.0	0.0	0.0	18.0	0.0	0.0	54.0
371+77	WBDL	6	12	8.0	0.0	0.0	18.0	0.0	0.0	54.0
<b>WESTBOUND SUB TOTAL #1:</b>				<b>400.0</b>	<b>37.3</b>	<b>54.7</b>	<b>954.0</b>	<b>13.7</b>	<b>92.0</b>	<b>3015.0</b>

MODEL: SQ02 (Sheet)  
FILE NAME: c:\p\work\pavim\miller\rahd0958866\06781-sht-schedule.dgn

USER NAME = Rahshun.Miller	DESIGNED -	REVISED -
	DRAWN -	REVISED -
	CHECKED -	REVISED -
PLOT DATE = 3/22/2024	DATE -	REVISED -

**STATE OF ILLINOIS  
DEPARTMENT OF TRANSPORTATION**

SCHEDULE OF QUANTITIES			
CLASS B PATCHING LOCATION 1 WESTBOUND #1			
SCALE:	SHEET 3	OF 7 SHEETS	STA. TO STA.

F.A.P. RTE.	SECTION	COUNTY	TOTAL SHEETS	SHEET NO.
327	(15,16-1)PP	MARION	12	7
CONTRACT NO. 76T81				
ILLINOIS FED. AID PROJECT				

CLASS B PATCHING SCHEDULE 11" (LOCATION 1 WESTBOUND) #2										
STATION	LANE DRIVE/PASS	LENGTH	WIDTH	TYPE II	TYPE III	TYPE IV	DOWEL BARS	TIE BAR	WELDED WIRE REINFORCEMENT	SAW CUTS
		FOOT	FOOT	SQ YDS	SQ YDS	SQ YDS	EACH	EACH	SQ YDS	FOOT
371+61	WBDL	6	12	8	0	0	18	0	0	54
371+47	WBDL	6	12	8	0	0	18	0	0	54
371+30	WBDL	6	12	8	0	0	18	0	0	54
371+17	WBDL	6	12	8	0	0	18	0	0	54
371+02	WBDL	6	12	8	0	0	18	0	0	54
370+88	WBDL	6	12	8	0	0	18	0	0	54
370+72	WBDL	6	12	8	0	0	18	0	0	54
370+56	WBDL	6	12	8	0	0	18	0	0	54
370+42	WBDL	6	12	8	0	0	18	0	0	54
370+27	WBDL	6	12	8	0	0	18	0	0	54
370+12	WBDL	6	12	8	0	0	18	0	0	54
369+98	WBDL	6	12	8	0	0	18	0	0	54
369+81	WBDL	6	12	8	0	0	18	0	0	54
369+67	WBDL	6	12	8	0	0	18	0	0	54
369+52	WBDL	6	12	8	0	0	18	0	0	54
369+40	WBDL	6	12	8	0	0	18	0	0	54
369+21	WBDL	6	12	8	0	0	18	0	0	54
369+07	WBDL	6	12	8	0	0	18	0	0	54
368+92	WBDL	6	12	8	0	0	18	0	0	54
368+60	WBDL	6	12	8	0	0	18	0	0	54
368+46	WBDL	6	12	8	0	0	18	0	0	54
368+32	WBDL	6	12	8	0	0	18	0	0	54
368+15	WBDL	6	12	8	0	0	18	0	0	54
368+00	WBDL	6	12	8	0	0	18	0	0	54
367+85	WBDL	6	12	8	0	0	18	0	0	54
367+71	WBDL	6	12	8	0	0	18	0	0	54
367+54	WBDL	6	12	8	0	0	18	0	0	54
367+40	WBDL	6	12	8	0	0	18	0	0	54
367+24	WBDL	6	12	8	0	0	18	0	0	54
367+10	WBDL	6	12	8	0	0	18	0	0	54
366+93	WBDL	6	12	8	0	0	18	0	0	54
366+78	WBDL	6	12	8	0	0	18	0	0	54
366+65	WBDL	6	12	8	0	0	18	0	0	54
366+50	WBDL	6	12	8	0	0	18	0	0	54
366+33	WBDL	6	12	8	0	0	18	0	0	54
366+14	WBDL	6	12	8	0	0	18	0	0	54
365+99	WBDL	6	12	8	0	0	18	0	0	54
365+84	WBDL	6	12	8	0	0	18	0	0	54
WESTBOUND SUB TOTAL #2				304.0	0.0	0.0	684.0	0.0	0.0	2052.0

CLASS B PATCHING SCHEDULE 11" (LOCATION 2)										
STATION	LANE DRIVE/PASS	LENGTH	WIDTH	TYPE II	TYPE III	TYPE IV	DOWEL BARS	TIE BAR	WELDED WIRE REINFORCEMENT	SAW CUTS
		FOOT	FOOT	SQ YDS	SQ YDS	SQ YDS	EACH	EACH	SQ YDS	FOOT
1248+73	WB	6	12	8	0	0	18	0	0	54
1247+79	EB	6	12	8	0	0	18	0	0	54
1247+79	WB	6	12	8	0	0	18	0	0	54
1246+97	WB	6	12	8	0	0	18	0	0	54
1246+69	EB	6	12	8	0	0	18	0	0	54
LOCATION 2 TOTAL :				40	0	0	90	0	0	270

MODEL: SQ03 (Sheet)  
 FILE NAME: c:\p\work\p\w\miller\ra\095886\08781-sht-schedule.dgn

USER NAME = Rahshun.Miller	DESIGNED -	REVISED -
	DRAWN -	REVISED -
	CHECKED -	REVISED -
PLOT DATE = 3/22/2024	DATE -	REVISED -

**STATE OF ILLINOIS**  
**DEPARTMENT OF TRANSPORTATION**

**SCHEDULE OF QUANTITIES**  
**CLASS B PATCHING LOCATION 1 WESTBOUND #2**

SCALE: SHEET 4 OF 7 SHEETS STA. TO STA.

F.A.P. RTE.	SECTION	COUNTY	TOTAL SHEETS	SHEET NO.
327	(15,16-1)PP	MARION	12	8
CONTRACT NO. 76T81				
ILLINOIS FED. AID PROJECT				



**CLASS B PATCHING SCHEDULE 11" (LOCATION 1 WESTBOUND) #3**

STATION	LANE DRIVE/PASS	LENGTH	WIDTH	TYPE II	TYPE III	TYPE IV	DOWEL BARS	TIE BAR	WELDED WIRE REINFORCEMENT	SAW CUTS
		FOOT	FOOT	SQ YDS	SQ YDS	SQ YDS	EACH	EACH	SQ YDS	FOOT
365+68	WBDL	6	12	8.0	0.0	0.0	18.0	0.0	0.0	54.0
365+52	WBDL	6	12	8.0	0.0	0.0	18.0	0.0	0.0	54.0
365+36	WBDL	14	12	0.0	18.7	0.0	18.0	0.0	18.7	78.0
365+22	WBPL	6	12	8.0	0.0	0.0	18.0	0.0	0.0	54.0
365+07	WBDL	15	12	0.0	20.0	0.0	18.0	0.0	20.0	81.0
365+07	WBPL	6	12	8.0	0.0	0.0	18.0	0.0	0.0	54.0
364+77	WBPL	6	12	8.0	0.0	0.0	18.0	0.0	0.0	54.0
364+62	WBDL	6	12	8.0	0.0	0.0	18.0	0.0	0.0	54.0
364+62	WBPL	6	12	8.0	0.0	0.0	18.0	0.0	0.0	54.0
364+48	WBDL	10	12	13.3	0.0	0.0	18.0	0.0	0.0	66.0
361+99	WBDL	6	12	8.0	0.0	0.0	18.0	0.0	0.0	54.0
359+24	WBDL	6	12	8.0	0.0	0.0	18.0	0.0	0.0	54.0
359+24	WBPL	6	12	8.0	0.0	0.0	18.0	0.0	0.0	54.0
358+35	WBDL	6	12	8.0	0.0	0.0	18.0	0.0	0.0	54.0
358+35	WBPL	6	12	8.0	0.0	0.0	18.0	0.0	0.0	54.0
357+01	WBDL	6	12	8.0	0.0	0.0	18.0	0.0	0.0	54.0
357+01	WBPL	6	12	8.0	0.0	0.0	18.0	0.0	0.0	54.0
356+11	WBDL	6	12	8.0	0.0	0.0	18.0	0.0	0.0	54.0
354+01	WBDL	6	12	8.0	0.0	0.0	18.0	0.0	0.0	54.0
353+52	WBDL	6	12	8.0	0.0	0.0	18.0	0.0	0.0	54.0
352+92	WBPL	6	12	8.0	0.0	0.0	18.0	0.0	0.0	54.0
352+34	WBDL	6	12	8.0	0.0	0.0	18.0	0.0	0.0	54.0
349+49	WBPL	6	12	8.0	0.0	0.0	18.0	0.0	0.0	54.0
349+31	WBPL	15	12	0.0	20.0	0.0	18.0	0.0	20.0	81.0
349+21	WBDL	6	12	8.0	0.0	0.0	18.0	0.0	0.0	54.0
347+59	WBPL	12	12	0.0	16.0	0.0	18.0	0.0	16.0	72.0
347+47	WBDL	6	12	8.0	0.0	0.0	18.0	0.0	0.0	54.0
347+05	WBPL	6	12	8.0	0.0	0.0	18.0	0.0	0.0	54.0
346+94	WBPL	6	12	8.0	0.0	0.0	18.0	0.0	0.0	54.0
WESTBOUND SUB TOTAL #3:				205.3	74.7	0.0	522.0	0.0	74.7	1674.0
WESTBOUND SUB TOTAL #2:				304.0	0.0	0.0	684.0	0.0	0.0	2052.0
WESTBOUND SUB TOTAL #1:				400.0	37.3	54.7	954.0	13.7	92.0	3015.0
WESTBOUND TOTAL:				909.3	112.0	54.7	2160.0	13.7	166.7	6741.0

**CLASS B PATCHING SCHEDULE 11" (L1/L2) TOTAL**

STATION	LANE DRIVE/PASS	LENGTH	WIDTH	TYPE II	TYPE III	TYPE IV	DOWEL BARS	TIE BAR	WELDED WIRE REINFORCEMENT	SAW CUTS
		FOOT	FOOT	SQ YDS	SQ YDS	SQ YDS	EACH	EACH	SQ YDS	FOOT
LOCATION #1 EASTBOUND TOTAL:				422.7	178.7	153.3	1170.0	38.3	332.0	4038.0
LOCATION #1 WESTBOUND TOTAL:				909.3	112.0	54.7	2160.0	13.7	166.7	6741.0
LOCATION 2 TOTAL:				40.0	0.0	0.0	90.0	0.0	0.0	270.0
TOTAL:				1372	291	208	3420	52	499	11049

MODEL: SOQ-4 (Sheet)  
FILE NAME: c:\p\work\p\miller\ra\0958866\067818-11-sht-schedule.dgn

USER NAME = Rahshun.Miller	DESIGNED -	REVISED -
	DRAWN -	REVISED -
	CHECKED -	REVISED -
PLOT DATE = 3/22/2024	DATE -	REVISED -

**STATE OF ILLINOIS  
DEPARTMENT OF TRANSPORTATION**

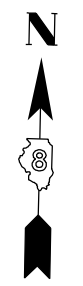
**SCHEDULE OF QUANTITIES  
CLASS B PATCHING LOCATION 2 & LOCATION 1 WESTBOUND #3**

SCALE: SHEET 5 OF 7 SHEETS STA. TO STA.

F.A.P. RTE.	SECTION	COUNTY	TOTAL SHEETS	SHEET NO.
327	(15,16-1)PP	MARION	12	9
CONTRACT NO. 76T81				
ILLINOIS FED. AID PROJECT				







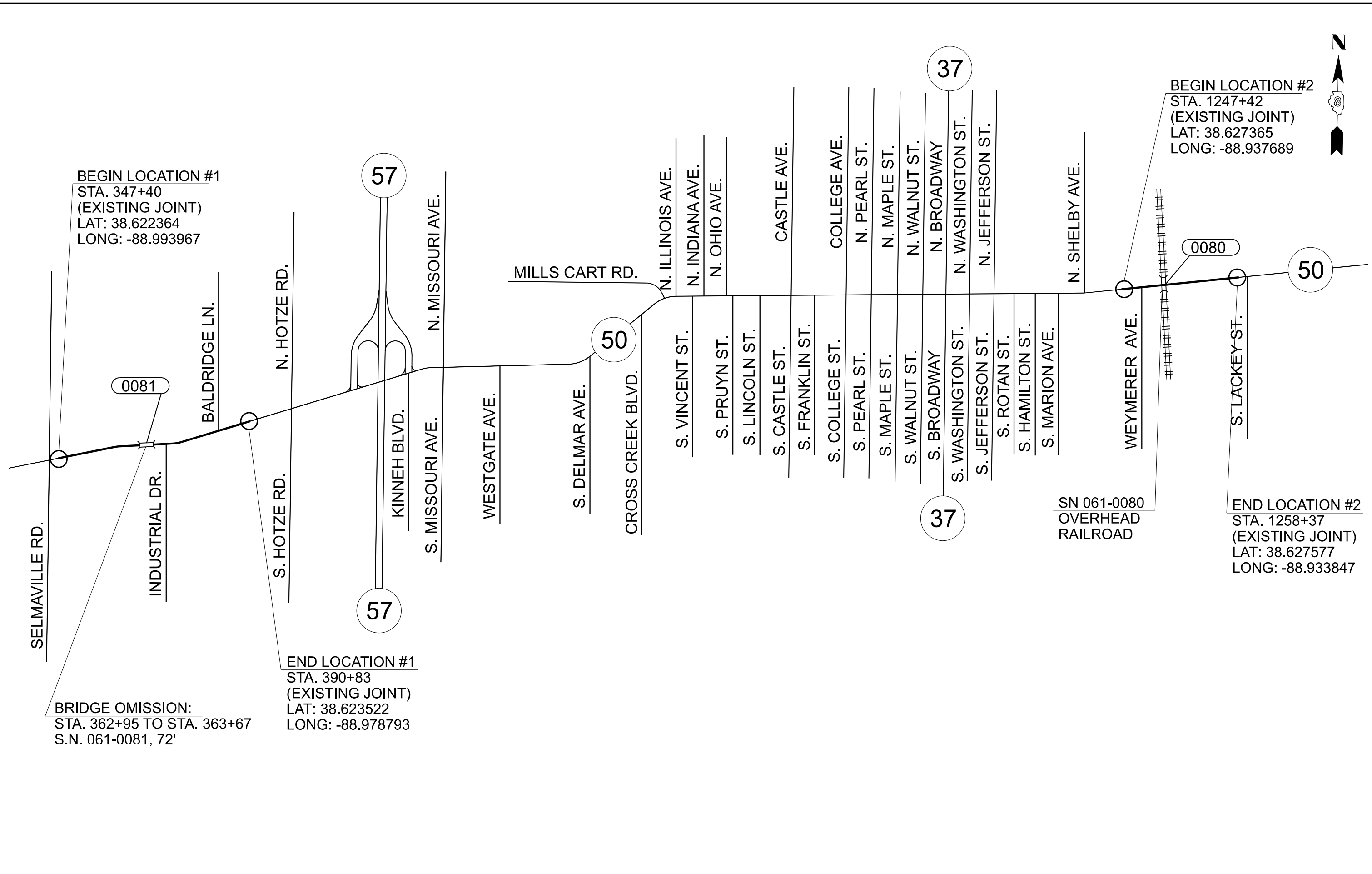
BEGIN LOCATION #2  
 STA. 1247+42  
 (EXISTING JOINT)  
 LAT: 38.627365  
 LONG: -88.937689

BEGIN LOCATION #1  
 STA. 347+40  
 (EXISTING JOINT)  
 LAT: 38.622364  
 LONG: -88.993967

END LOCATION #2  
 STA. 1258+37  
 (EXISTING JOINT)  
 LAT: 38.627577  
 LONG: -88.933847

END LOCATION #1  
 STA. 390+83  
 (EXISTING JOINT)  
 LAT: 38.623522  
 LONG: -88.978793

BRIDGE OMISSION:  
 STA. 362+95 TO STA. 363+67  
 S.N. 061-0081, 72'



MODEL: Location Map (Sheet)  
 FILE NAME: c:\p\work\miller\rahd0958865\061-0081-sht-locationmap.dgn

USER NAME = Rahshun.Miller	DESIGNED -	REVISED -
	DRAWN -	REVISED -
	CHECKED -	REVISED -
PLOT DATE = 3/22/2024	DATE -	REVISED -

**STATE OF ILLINOIS  
 DEPARTMENT OF TRANSPORTATION**

**LOCATION MAP**

SCALE: SHEET 1 OF 1 SHEETS STA. TO STA.

F.A.P. RTE.	SECTION	COUNTY	TOTAL SHEETS	SHEET NO.
327	(15,16-1)PP	MARION	12	12
CONTRACT NO. 76T81				
ILLINOIS FED. AID PROJECT				