

STATE OF ILLINOIS
DEPARTMENT OF TRANSPORTATION

F.A.I. RTE.	SECTION	COUNTY	TOTAL SHEETS	SHEET NO.
57	FAI 57 23 BP2	COOK	26	1
		ILLINOIS	CONTRACT NO. 62V24	

PROPOSED HIGHWAY PLANS

FOR INDEX OF SHEETS, SEE SHEET NO. 2

IMPROVEMENTS ARE LOCATED IN THE CITY OF CHICAGO
AND THE VILLAGE OF CALUMET PARK

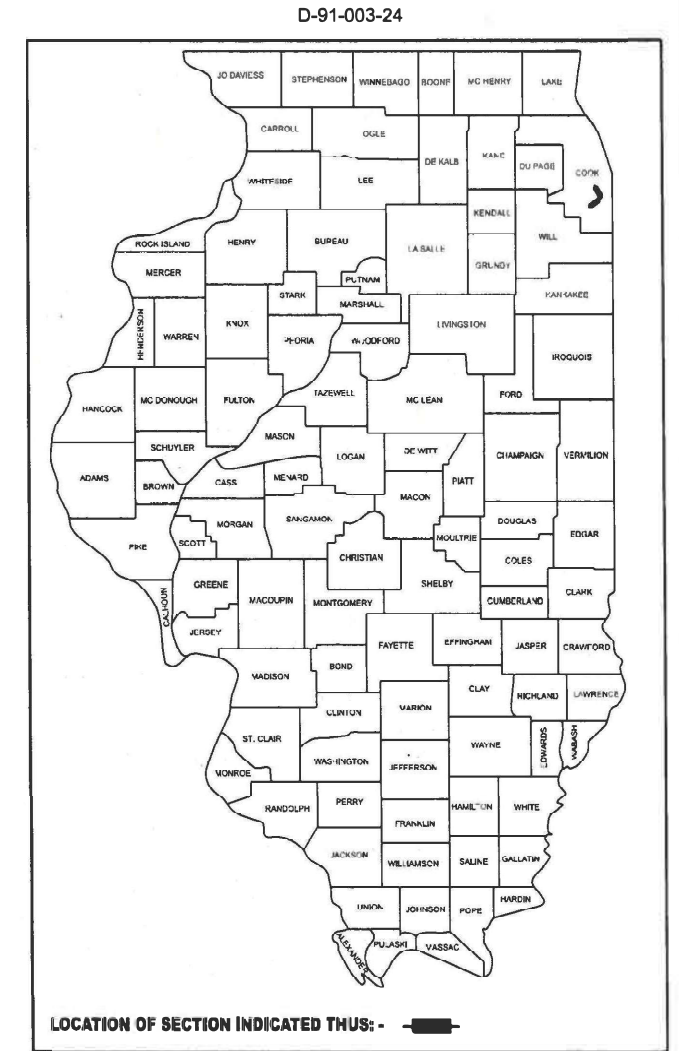
TRAFFIC DATA:

I-57
ADT (2022): 137,800
POSTED SPEED LIMIT: 55 MPH

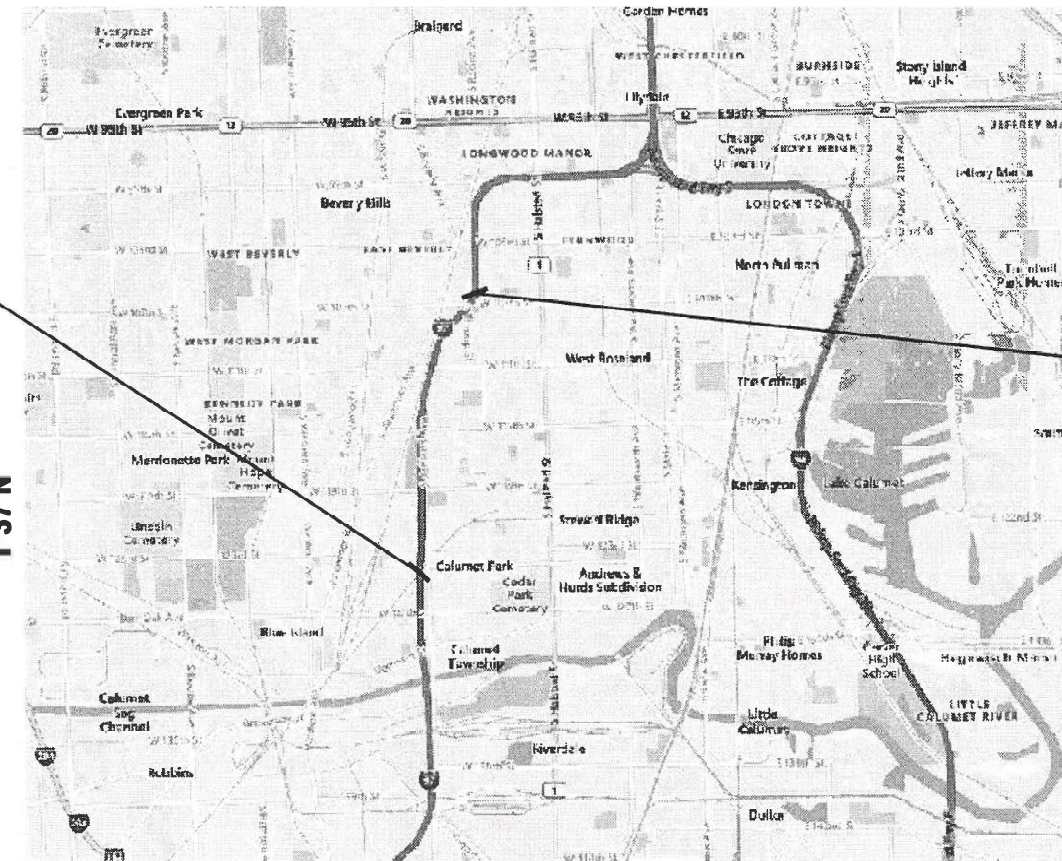
**F.A.I. ROUTE: 57 (I-57)
AT METRA RR NORTH OF 127TH ST
& BIKE PATH NORTH OF 107TH ST (OVERHEAD)
SECTION: FAI 57 23 BP2
PROJECT: NHPP-43ZU(021)
BRIDGE PAINTING
COOK COUNTY**

C-91-003-24

R 14 E



**IMPROVEMENT LOCATION 1:
I-57 AT METRA RR (N OF 127TH ST)
VILLAGE OF CALUMET PARK
SN: 016-0068**



**IMPROVEMENT LOCATION 2:
I-57 AT BIKE PATH (N OF 107TH ST)
CITY OF CHICAGO
SN: 016-0070**

J.U.L.I.E.
JOINT UTILITY LOCATION INFORMATION FOR EXCAVATION
1-800-892-0123
OR 811

C.U.A.N.
CHICAGO UTILITY ALERT NETWORK
1-312-744-7000

**PROJECT ENGINEER: RODRIGO LEDEZMA (847) 705-4580
PROJECT MANAGER: J. ALAIN MIDY (847) 221-3056**

CONTRACT NO. 62V24

CHICAGO & CALUMET TOWNSHIP

STATE OF ILLINOIS
DEPARTMENT OF TRANSPORTATION

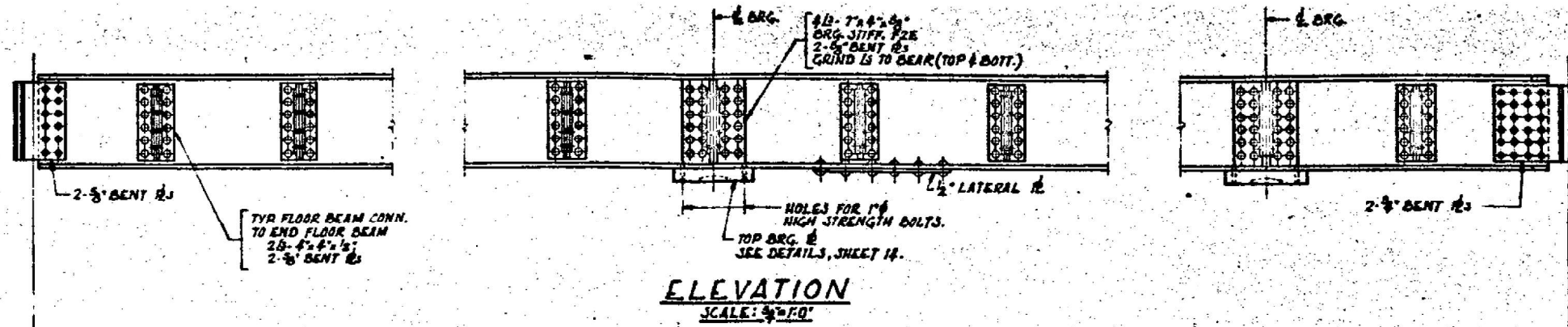
SUBMITTED November 29, 2023
Jose Rios REGIONAL ENGINEER

May 10, 2024 [Signature]
ENGINEER OF DESIGN AND ENVIRONMENT

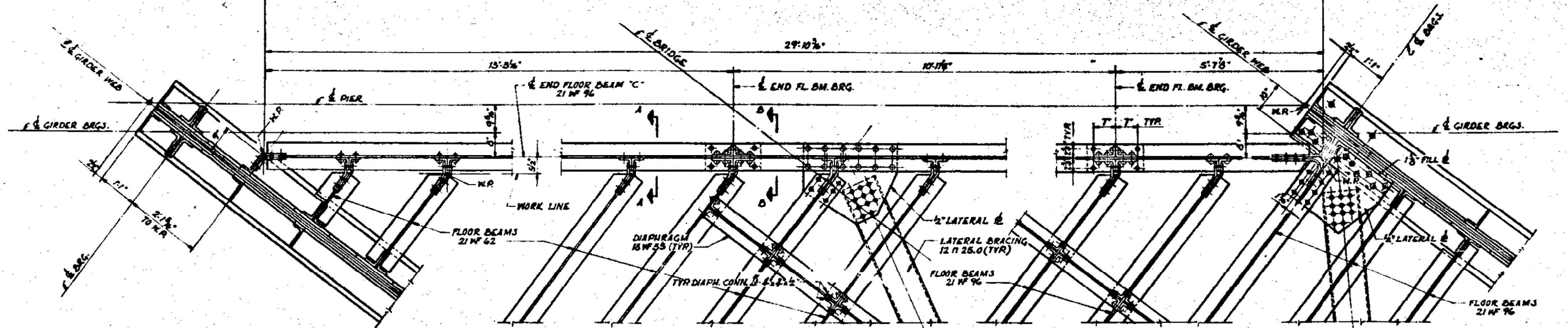
May 10, 2024 [Signature]
DIRECTOR OF HIGHWAYS PROJECT IMPLEMENTATION

**PRINTED BY THE AUTHORITY
OF THE STATE OF ILLINOIS**

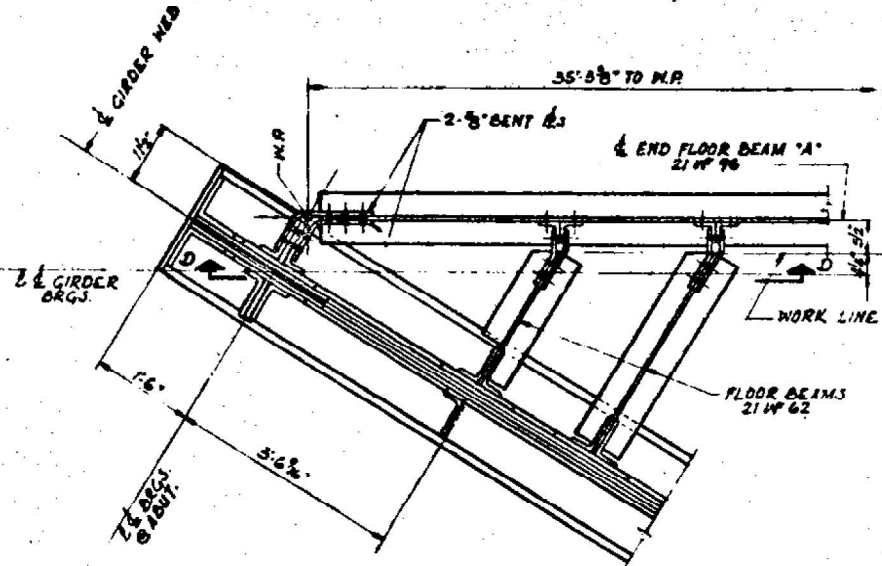
FOR INFORMATION ONLY



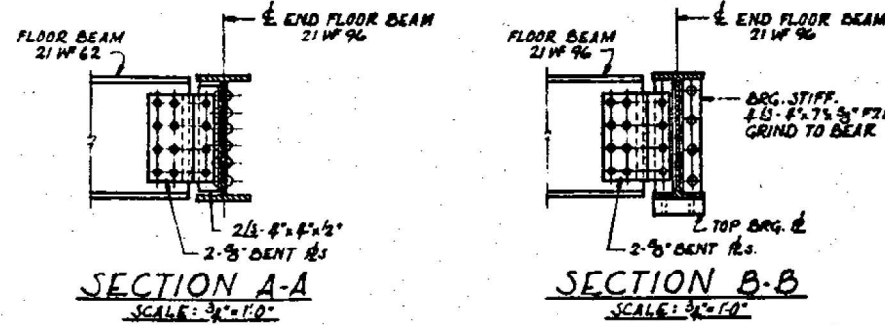
ELEVATION
SCALE: 3/4" = 1'-0"



PLAN OF END FLOOR BEAM 'C'
END FLOOR BEAM 'B' SIMILAR
SCALE: 3/4" = 1'-0"

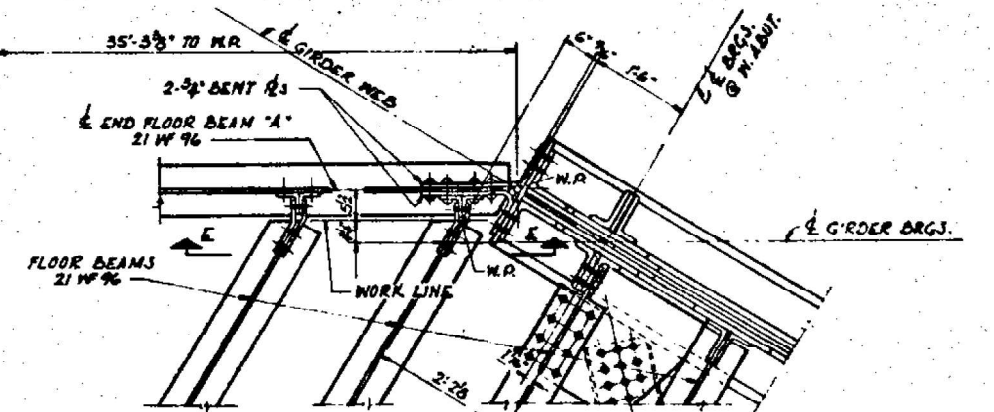


PART-PLAN OF END FL. BM. 'A'
END FLOOR BEAM 'D' SIMILAR

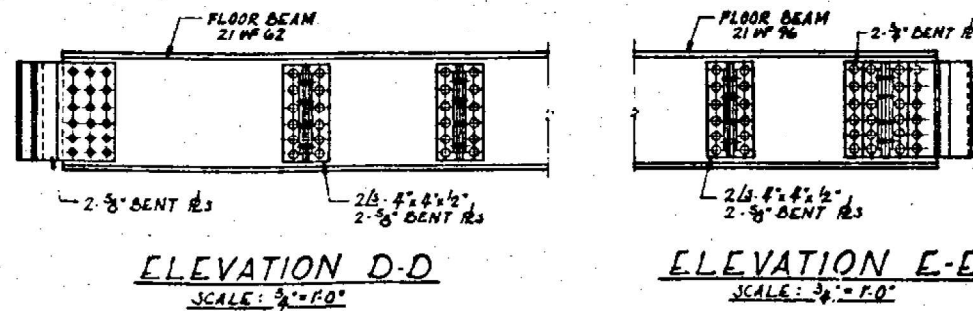


SECTION A-A
SCALE: 3/4" = 1'-0"

SECTION B-B
SCALE: 3/4" = 1'-0"



PART-PLAN OF END FL. BM. 'A'
END FLOOR BEAM 'D' SIMILAR
I.C.R.R. BRIDGE No. AA 2-9



ELEVATION D-D
SCALE: 3/4" = 1'-0"

ELEVATION E-E
SCALE: 3/4" = 1'-0"

MODEL: D:\m107 (Sheet) FILE NAME: p:\projects\100323\100323\100323\100323\100323\100323.dwg

USER NAME = Cesar, Dominguez	DESIGNED -	REVISED -
PLOT SCALE = 0.16666633 / in.	DRAWN -	REVISED -
PLOT DATE = 12/7/2023	CHECKED -	REVISED -
	DATE -	REVISED -

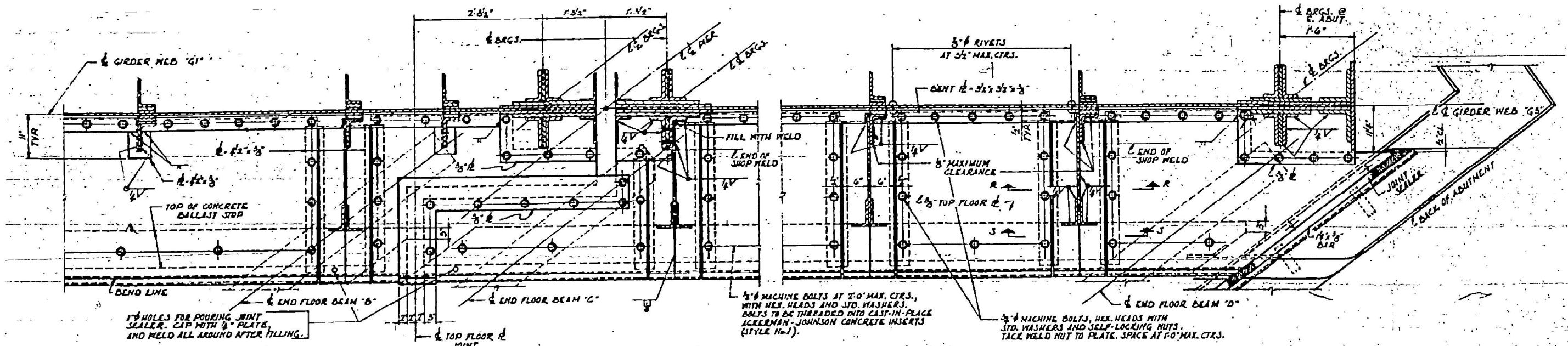
STATE OF ILLINOIS
DEPARTMENT OF TRANSPORTATION

END FLOOR BEAM DETAILS
LOCATION 1: SN 016-0068

SCALE: SHEET 7 OF 9 SHEETS STA. TO STA.

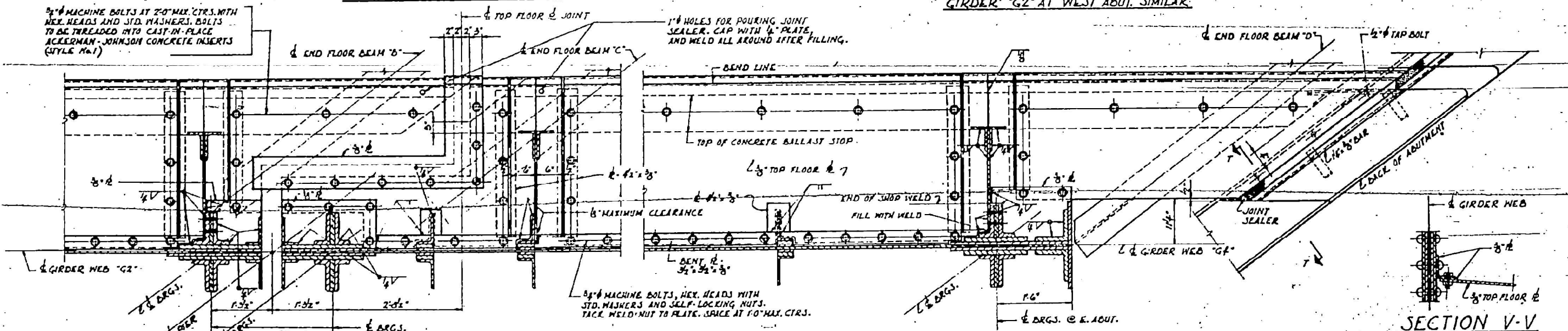
F.A.I. RTE.	SECTION	COUNTY	TOTAL SHEETS	SHEET NO.
57	FAI 57 23 BP2	COOK	26	10
CONTRACT NO. 62V24			ILLINOIS FED. AID PROJECT	

FOR INFORMATION ONLY



GIRDERS 'G1' & 'G3' AT PIER

GIRDER 'G3' AT EAST ABUTMENT
GIRDER 'G2' AT WEST ABUT. SIMILAR.

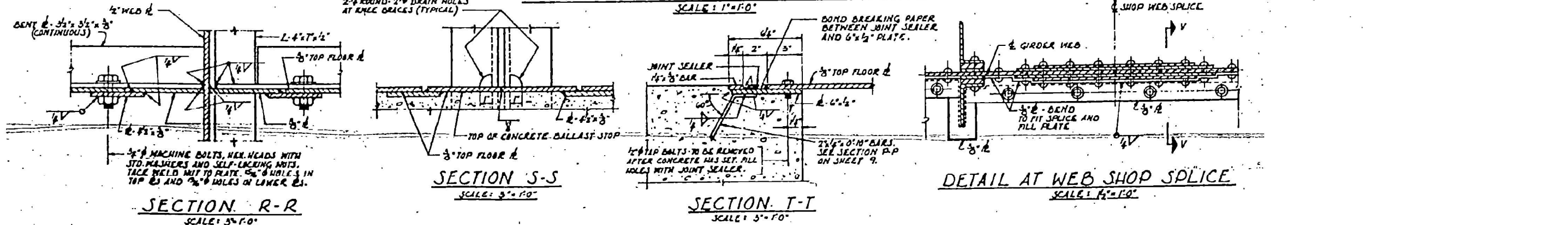


GIRDERS 'G2' & 'G4' AT PIER

GIRDER 'G4' AT EAST ABUTMENT
GIRDER 'G1' AT WEST ABUT. SIMILAR.

SECTION V-V
SCALE: 1/2\"/>

PARTIAL PLAN - TOP FLOOR PLATE



SECTION R-R
SCALE: 3/4\"/>

SECTION S-S
SCALE: 3/4\"/>

SECTION T-T
SCALE: 3/4\"/>

DETAIL AT WEB SHOP SPLICE
SCALE: 1/2\"/>

MODEL: D:\m108 (Sheet) FILE NAME: P:\PROJECTS\Documents\DOT Office\Direct 1\ORD Project\103232\CADD\Drawings\CADDsheet103232-1b.dwg
 PLOT DATE: 12/7/2023

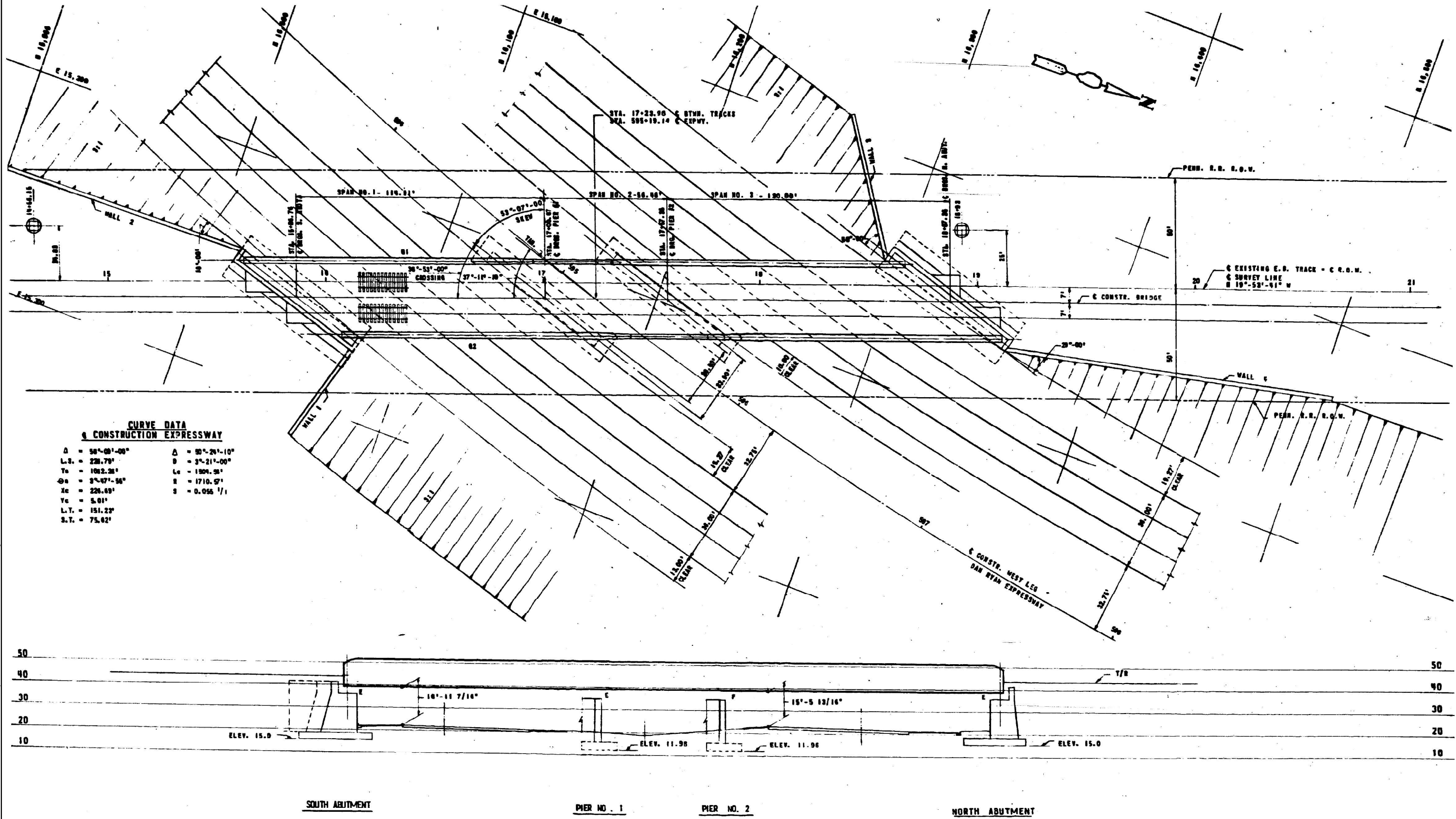
USER NAME = Cesar, Dominguez	DESIGNED -	REVISED -
	DRAWN -	REVISED -
PLOT SCALE = 0.16666633 / in.	CHECKED -	REVISED -
PLOT DATE = 12/7/2023	DATE -	REVISED -

STATE OF ILLINOIS
DEPARTMENT OF TRANSPORTATION

TOP FLOOR PLATE DETAILS		LOCATION 1: SN 016-0068	
SCALE:	SHEET 8 OF 9 SHEETS	STA.	TO STA.

F.A.I. RTE.	SECTION	COUNTY	TOTAL SHEETS	SHEET NO.
57	FAI 57 23 BP2	COOK	26	11
CONTRACT NO. 62V24				
ILLINOIS FED. AID PROJECT				

FOR INFORMATION ONLY



CURVE DATA OF CONSTRUCTION EXPRESSWAY

$\Delta = 56^{\circ}09'00''$	$\Delta = 30^{\circ}26'10''$
L.S. = 226.79'	$\theta = 3^{\circ}21'00''$
Ts = 1082.26'	Lc = 1504.98'
$\phi_s = 3^{\circ}47'56''$	R = 1710.9'
Xc = 226.69'	S = 0.055 1/1
Yc = 5.01'	
L.T. = 151.23'	
S.T. = 75.62'	

MODEL: D:\a1101 (Sheet)
 FILE NAME: P:\BOS\p\cadd\documents\DOT Office\District 1\ORD Project\010323\CADDData\CAD\Sheet\010323-11-0002.dwg

USER NAME = Cesar.Dominguez	DESIGNED -	REVISED -
PLOT SCALE = 0.16666633 1/16"	DRAWN -	REVISED -
PLOT DATE = 12/7/2023	CHECKED -	REVISED -
	DATE -	REVISED -

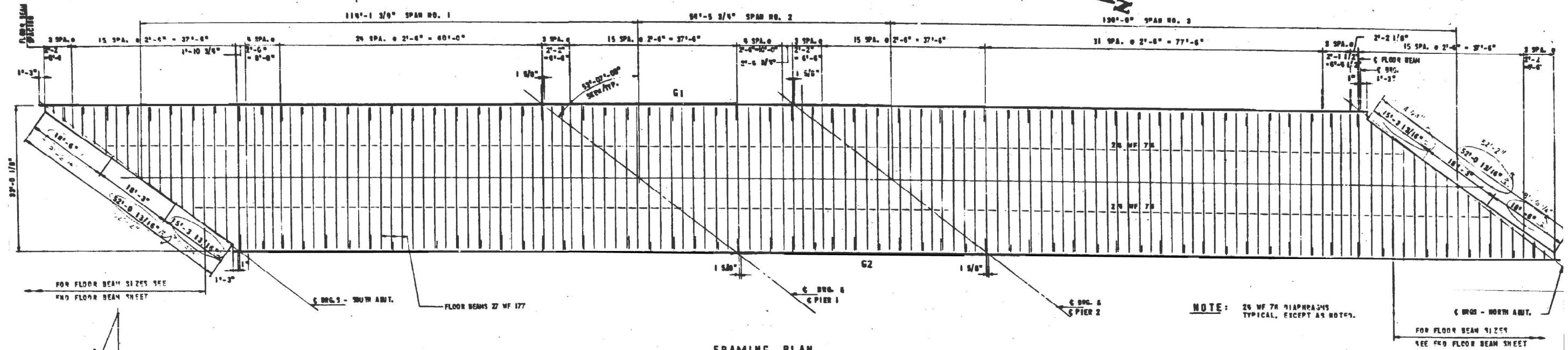
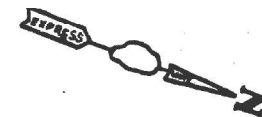
STATE OF ILLINOIS
DEPARTMENT OF TRANSPORTATION

GENERAL PLAN & ELEVATION
LOCATION 2: SN 016-0070

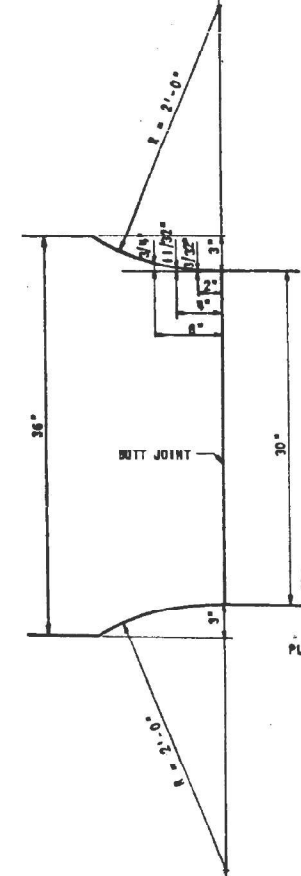
SCALE: SHEET 1 OF 9 SHEETS STA. TO STA.

F.A.I. RTE.	SECTION	COUNTY	TOTAL SHEETS	SHEET NO.
57	FAI 57 23 BP2	COOK	26	13
CONTRACT NO. 62V24			ILLINOIS FED. AID PROJECT	

FOR INFORMATION ONLY



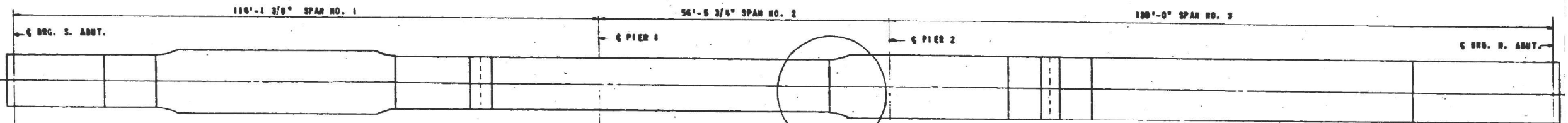
FRAMING PLAN
SCALE: 3/32" = 1'-0"



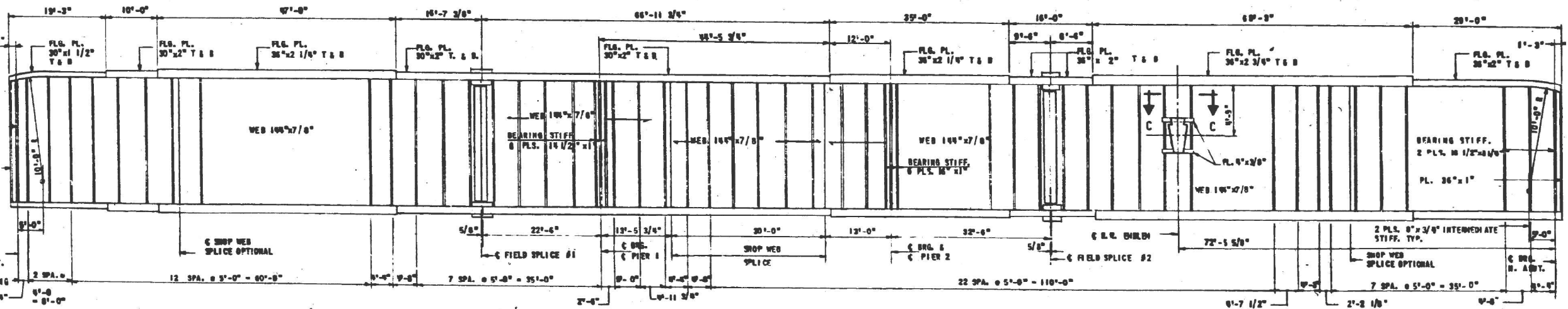
DETAIL E

DEAD LOAD DEFLECTION					
SPAN 1	DEFL. IN.	SPAN 2	DEFL. IN.	SPAN 3	DEFL. IN.
-1 PT.	+ 3/16"	-1 PT.	- 1/16"	-1 PT.	+ 3/16"
-2 PT.	+ 5/16"	-2 PT.	- 1/8"	-2 PT.	+ 3/8"
-3 PT.	+ 7/16"	-3 PT.	- 1/8"	-3 PT.	+ 1/2"
-4 PT.	+ 1/2"	-4 PT.	- 1/8"	-4 PT.	+ 5/8"
-5 PT.	+ 1/2"	-5 PT.	- 1/8"	-5 PT.	+ 11/16"
-6 PT.	+ 1/2"	-6 PT.	- 1/8"	-6 PT.	+ 11/16"
-7 PT.	+ 7/16"	-7 PT.	- 1/8"	-7 PT.	+ 5/8"
-8 PT.	+ 5/16"	-8 PT.	- 1/8"	-8 PT.	+ 7/16"
-9 PT.	+ 1/8"	-9 PT.	- 1/16"	-9 PT.	+ 1/8"

• DOWN - UP • DOWN

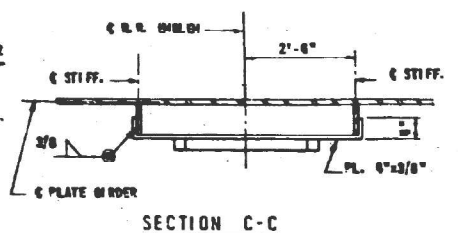


PLAN TOP FLANGE



ELEVATION GIRDER G2

ELEVATIONS BOT. OF WEB				
GIRDER	S. ABUT.	PIER 01	PIER 02	N. ABUT.
01	39.407	39.332	39.295	39.204
02	39.378	39.303	39.264	39.175



SECTION C-C

MODEL: D:\m102 (Sheet) FILE NAME: P:\PROJECTS\DOT\Office\Drawings\100323\CADD\Drawings\CAD\Drawings\100323-14-Steel2.dwg

USER NAME = Cesar, Dominguez	DESIGNED -	REVISED -
DRAWN -	REVISOR -	REVISION -
PLOT SCALE = 0.16666633 / in.	CHECKED -	REVISOR -
PLOT DATE = 12/7/2023	DATE -	REVISOR -

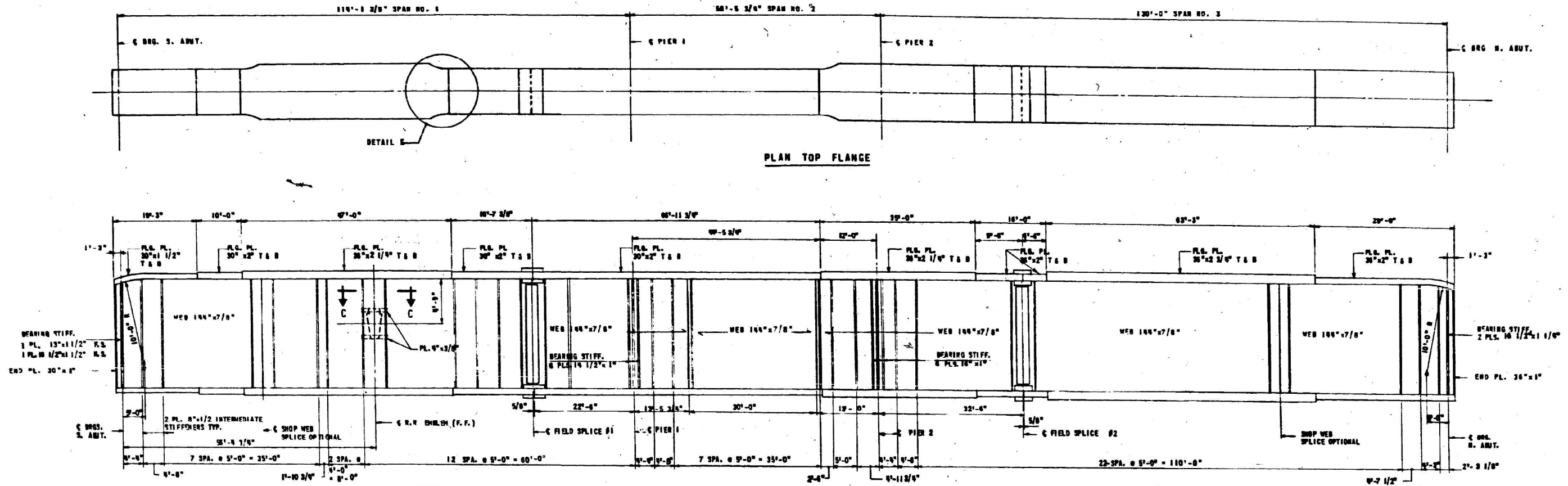
**STATE OF ILLINOIS
DEPARTMENT OF TRANSPORTATION**

**STEEL FRAMING PLAN
LOCATION 2: SN 016-0070**

SCALE: SHEET 2 OF 9 SHEETS STA. TO STA.

F.A.I. RTE.	SECTION	COUNTY	TOTAL SHEETS	SHEET NO.
57	FAI 57 23 BP2	COOK	26	14
CONTRACT NO. 62V24				
ILLINOIS FED. AID PROJECT				

FOR INFORMATION ONLY



NOTE:

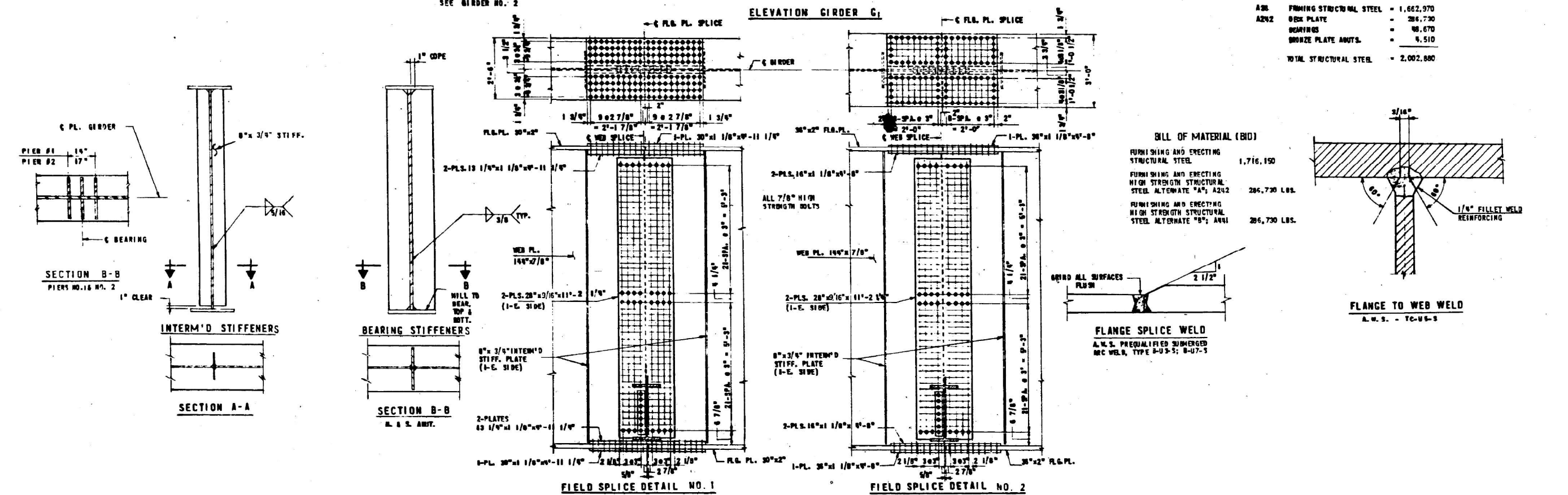
FOR SECTION C-C
SEE GIRDER NO. 2

COMPOSITION TABULATION

ABR	FRAMING STRUCTURAL STEEL	= 1,662,970
A242	DECK PLATE	= 286,730
	BEARINGS	= 98,670
	BRIDGE PLATE ABUTS.	= 4,510
	TOTAL STRUCTURAL STEEL	= 2,052,880

BILL OF MATERIAL (BIM)

FURNISHING AND ERECTING	STRUCTURAL STEEL	1,716,150
FURNISHING AND ERECTING	HIGH STRENGTH STRUCTURAL STEEL ALTERNATE "A"; A242	286,730 LBS.
FURNISHING AND ERECTING	HIGH STRENGTH STRUCTURAL STEEL ALTERNATE "B"; A572	286,730 LBS.



STATE OF ILLINOIS
DEPARTMENT OF TRANSPORTATION

GIRDER DETAILS
LOCATION 2: SN 016-0070

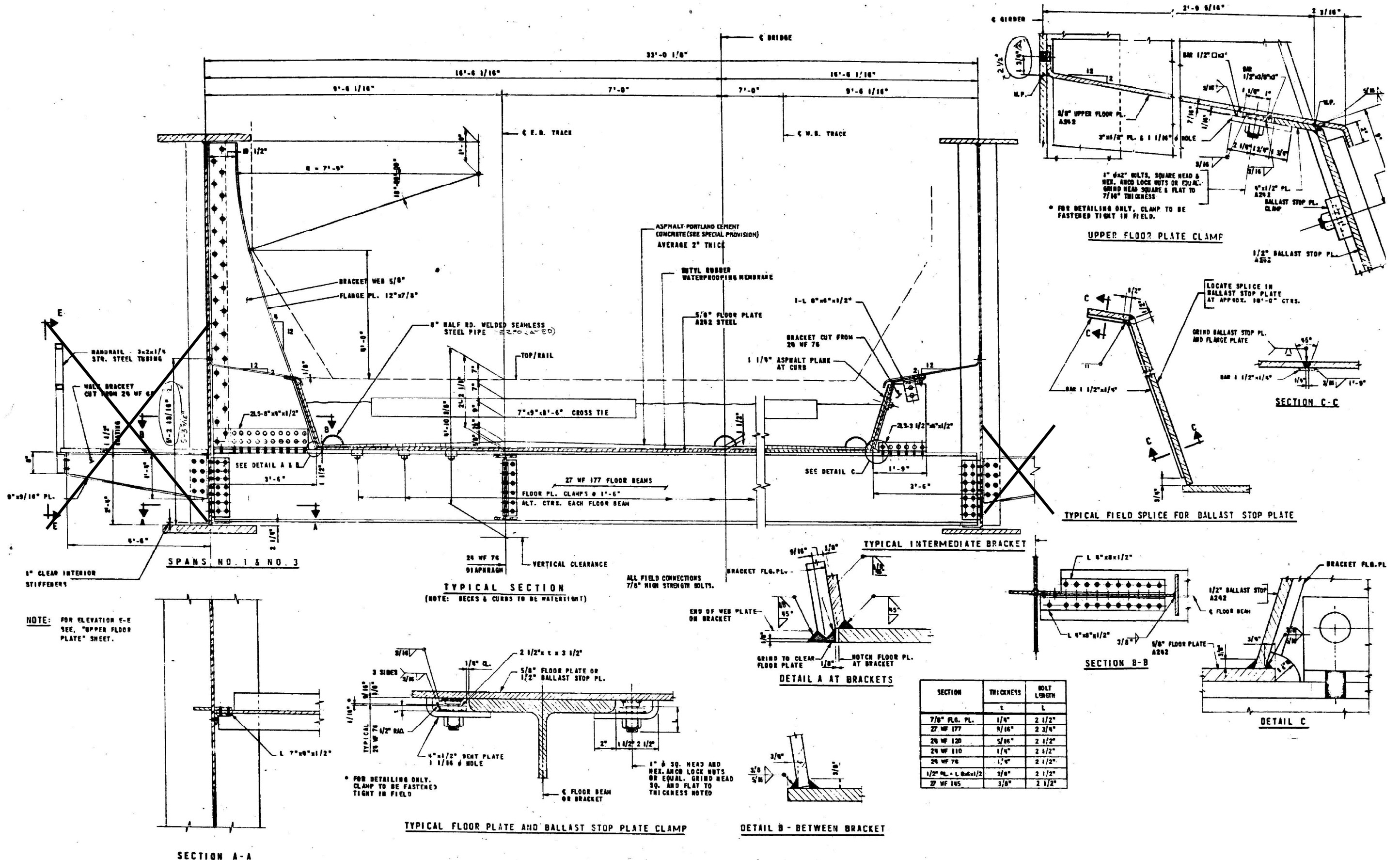
USER NAME = Cesar, Dominguez	DESIGNED -	REVISED -
PLOT SCALE = 0.16666633 / in.	DRAWN -	REVISED -
PLOT DATE = 12/7/2023	CHECKED -	REVISED -
	DATE -	REVISED -

SCALE: SHEET 3 OF 9 SHEETS STA. TO STA.

F.A.I. RTE.	SECTION	COUNTY	TOTAL SHEETS	SHEET NO.
57	FAI 57 23 BP2	COOK	26	15
CONTRACT NO. 62V24				
ILLINOIS FED. AID PROJECT				

MODEL: D:\a103 (Sheet) FILE NAME: P:\MIDOT\Documents\BIDD\Office\Direct\1.0\RD\Proj\016\0070\CADD\Drawings\CADD\Sheet\016-0070-15.dwg

FOR INFORMATION ONLY



MODEL: D:\m164 (Sheet) FILE NAME: P:\PROJECTS\DOT Office\Drawings\110RD\Project\110RD\Drawings\CADD\Drawings\110RD\110RD-0070-01-001.dwg
 PLOT DATE = 12/7/2023

USER NAME = Cesar.Dominguez	DESIGNED -	REVISED -
PLOT SCALE = 0.16666633 / in.	DRAWN -	REVISED -
PLOT DATE = 12/7/2023	CHECKED -	REVISED -
	DATE -	REVISED -

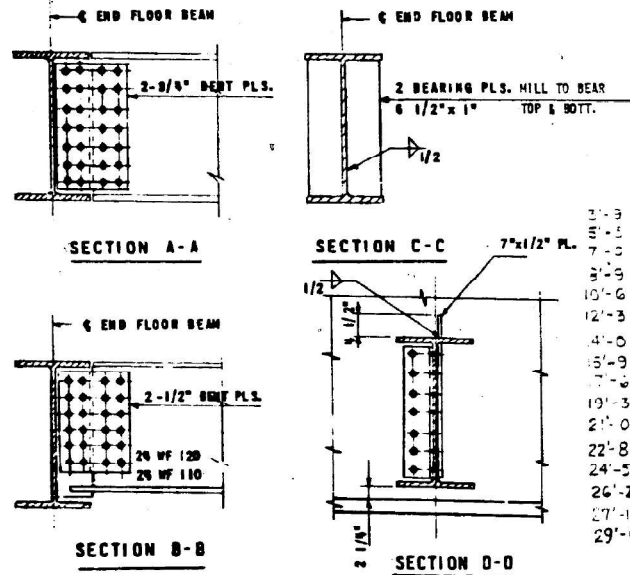
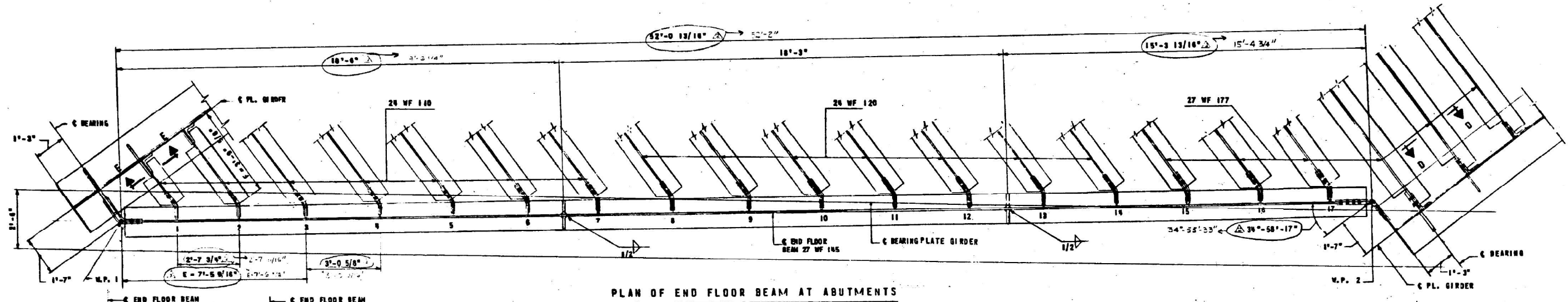
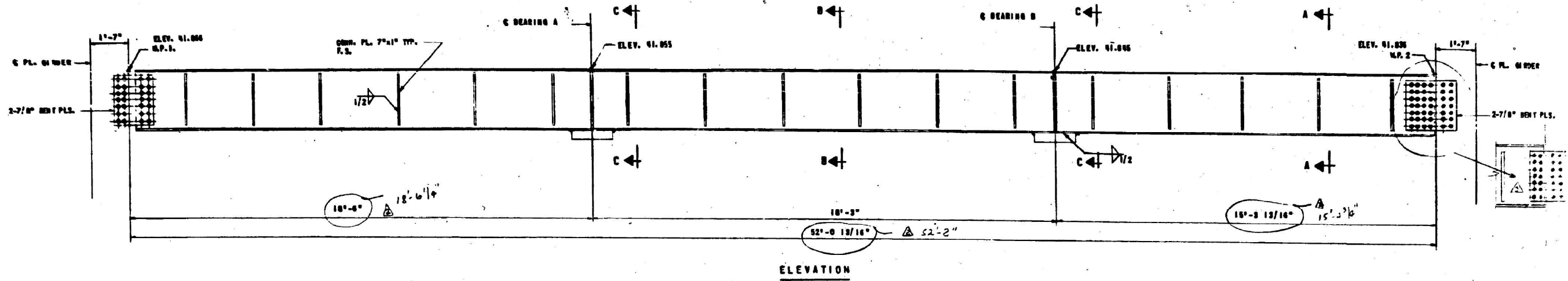
STATE OF ILLINOIS
DEPARTMENT OF TRANSPORTATION

DECK CROSS SECTION DETAILS
LOCATION 2: SN 016-0070

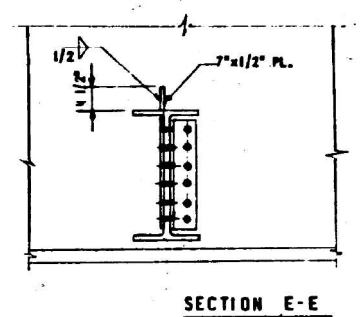
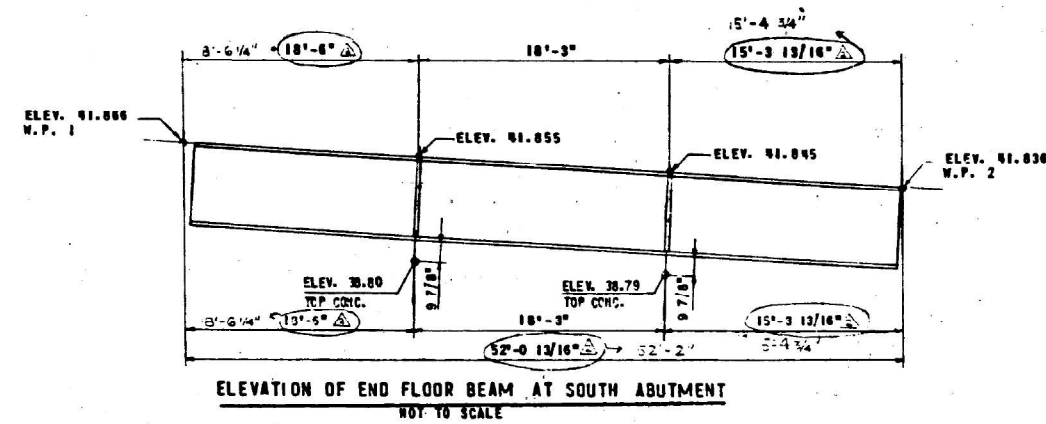
SCALE: SHEET 4 OF 9 SHEETS STA. TO STA.

F.A.I. RTE.	SECTION	COUNTY	TOTAL SHEETS	SHEET NO.
57	FAI 57 23 BP2	COOK	26	16
CONTRACT NO. 62V24				
ILLINOIS FED. AID PROJECT				

FOR INFORMATION ONLY



FLOOR	BL. NO.	DISTANCE F	DISTANCE E	V
1	1	2'-3 7/16"	2'-2 1/8"	2'-3"
2	2	3'-9 5/8"	4'-9 7/8"	4'-10 11/16"
3	3	5'-3 13/16"	7'-5 9/16"	7'-6 3/8"
4	4	7'-0 3/8"	10'-6 3/16"	10'-6 21/32"
5	5	8'-9 3/8"	13'-6 13/16"	13'-7 1/2"
6	6	10'-6 3/8"	16'-7 7/16"	16'-8 11/8"
7	7	12'-3 3/4"	19'-8 1/16"	19'-9 11/32"
8	8	14'-0 11/16"	22'-8 5/8"	22'-9 1/4"
9	9	15'-9 11/16"	25'-9 1/4"	25'-9 5/8"
10	10	17'-6 11/16"	28'-9 7/8"	28'-10 3/8"
11	11	19'-3 11/16"	31'-10 1/2"	31'-11 1/2"
12	12	21'-0 5/8"	34'-11 1/16"	34'-12 1/2"
13	13	22'-9 5/8"	37'-11 11/16"	38'-0 9/16"
14	14	24'-5 7/8"	41'-0 5/16"	41'-0 11/16"
15	15	26'-2 5/8"	44'-0 15/16"	44'-1 5/8"
16	16	28'-0 9/16"	47'-1 9/16"	47'-1 5/16"
17	17	29'-9 9/16"	50'-2 1/8"	50'-2 7/16"



USER NAME = Cesar, Dominguez
 DESIGNED -
 DRAWN -
 PLOT SCALE = 0.16666833' / in.
 CHECKED -
 PLOT DATE = 12/7/2023
 DATE -

REVISED -
 REVISED -
 REVISED -
 REVISED -

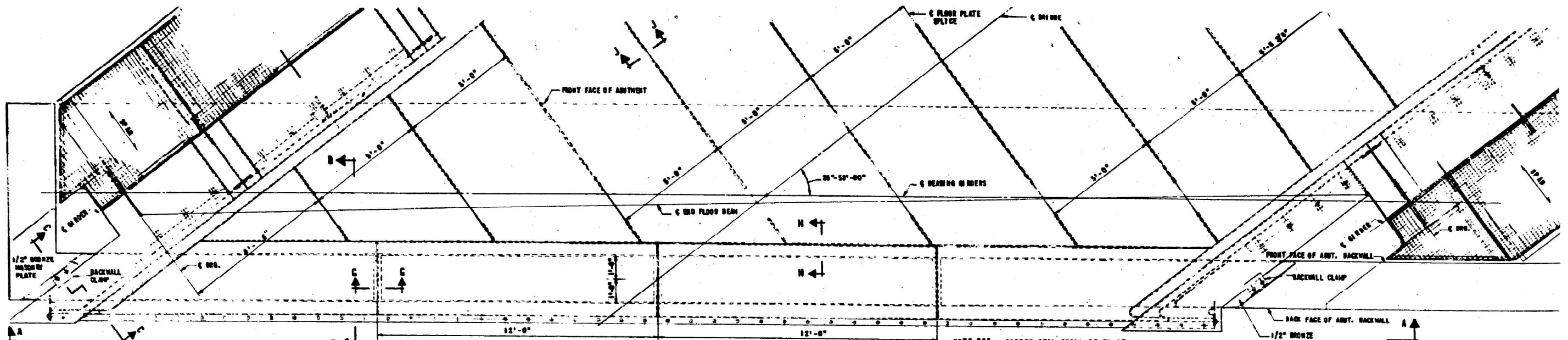
STATE OF ILLINOIS
 DEPARTMENT OF TRANSPORTATION

END FLOOR BEAM DETAILS
 LOCATION 2: SN 016-0070
 SCALE: SHEET 5 OF 9 SHEETS STA. TO STA.

F.A.I. RTE.	SECTION	COUNTY	TOTAL SHEETS	SHEET NO.
57	FAI 57 23 BP2	COOK	26	17
CONTRACT NO. 62V24				
ILLINOIS FED. AID PROJECT				

MODEL: D:\ar105 (Sheet)
 FILE NAME: P:\Info\pcc\ar105\ar105.dwg
 PLOT DATE: 12/7/2023
 PLOT SCALE: 0.16666833' / in.
 USER: Cesar, Dominguez
 PROJECT: FAI 57 23 BP2
 SHEET: 17 OF 26
 CONTRACT: 62V24

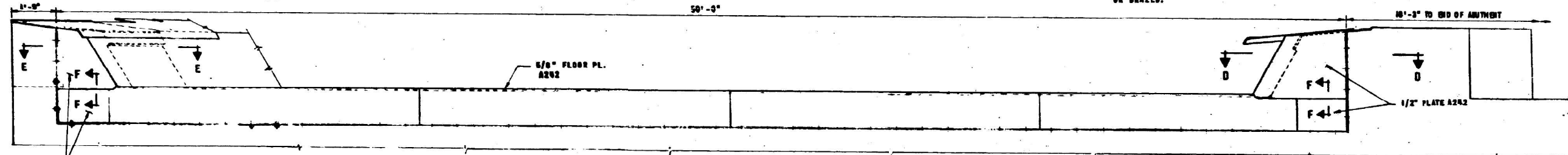
FOR INFORMATION ONLY



NOTE "A": 3/4" x 2" BOLTS @ 1'-0" CTRS. TACK WELD NUT. BOLTS AND NUTS TO BE CORROSION RESISTANT STEEL CONFORMING TO A. S. T. M. A-242

PLAN AT SOUTH ABUTMENT
PLAN AT NORTH ABUTMENT - SIMILAR, EXCEPT AS NOTED, SEC. G-G

NOTE "B": COPPER SEAL SHALL BE 24 OZ. SOLD ROLLED ANNEALED COPPER. COPPER SEAL SHALL BE CONTINUOUS AND SPLICES SHALL BE SOLDERED OR BRAZED.



SECTION E-E
SCALE: 3/4" = 1'-0"

SECTION B-B
SCALE: 1" = 1'-0"

SECTION C-C
SCALE: 1" = 1'-0"

SECTION H-H
NO SCALE

SECTION D-D
SCALE: 3/8" = 1'-0"

SECTION J-J

DETAIL "A"
SCALE: 3" = 1'-0"

DETAIL OF 24 OZ. COPPER SEAL
SCALE: 1 1/2" = 1'-0"

DETAIL "B"
NO SCALE

DETAIL OF BACKWALL CLAMP
SCALE: 1 1/2" = 1'-0"

SECTION G-G
SCALE: 3" = 1'-0"

NOTE C: ANCHOR BOLTS FOR 1/2" BRONZE MASONRY PLATES SHOWN IN SECTIONS B-B, C-C AND G-G TO BE SET IN 2" x DRILLED OR FORNED HOLES IN THE CONCRETE ANCHOR BOLTS TO CLEAR THE REINFORCEMENT AND BE WELDED TO ANCHOR BOLTS IN SHOP AND GROUND SMOOTH. BRONZE MASONRY PLATES SHALL CONFORM TO A. S. T. M. B100 (ALLOY NO. 1).

MODEL: D:\m105 (Sheet) FILE NAME: P:\M105\Documents\DOT Office\Direct L ORD Project\010324\CADD\Drawings\CAD\Sheet\010324-1-24-2024.dwg

USER NAME = Cesar, Dominguez	DESIGNED -	REVISED -
PLOT SCALE = 0.16666633 / in.	DRAWN -	REVISED -
PLOT DATE = 12/7/2023	CHECKED -	REVISED -
	DATE -	REVISED -

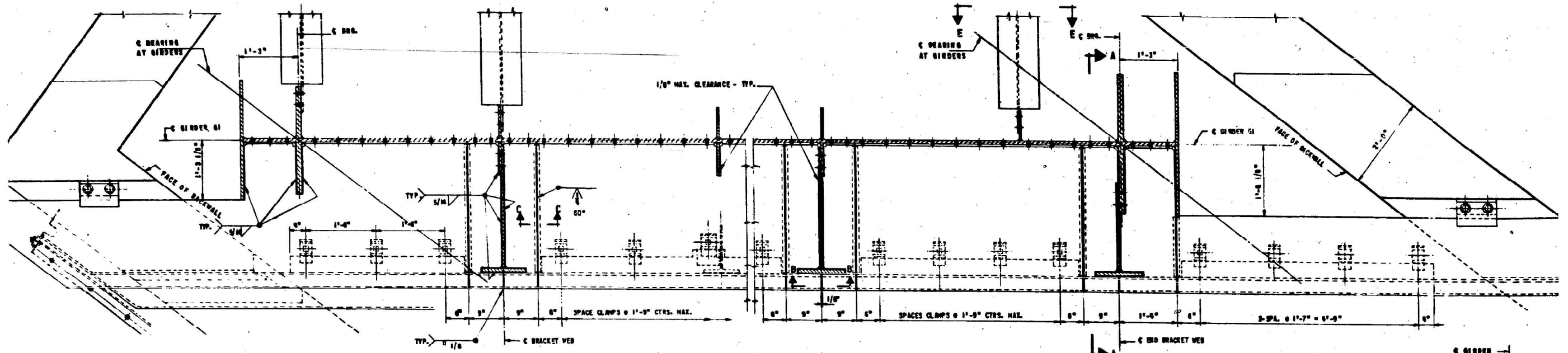
STATE OF ILLINOIS
DEPARTMENT OF TRANSPORTATION

FLOOR PLATE DETAILS
LOCATION 2: SN 016-0070

SCALE: SHEET 6 OF 9 SHEETS STA. TO STA.

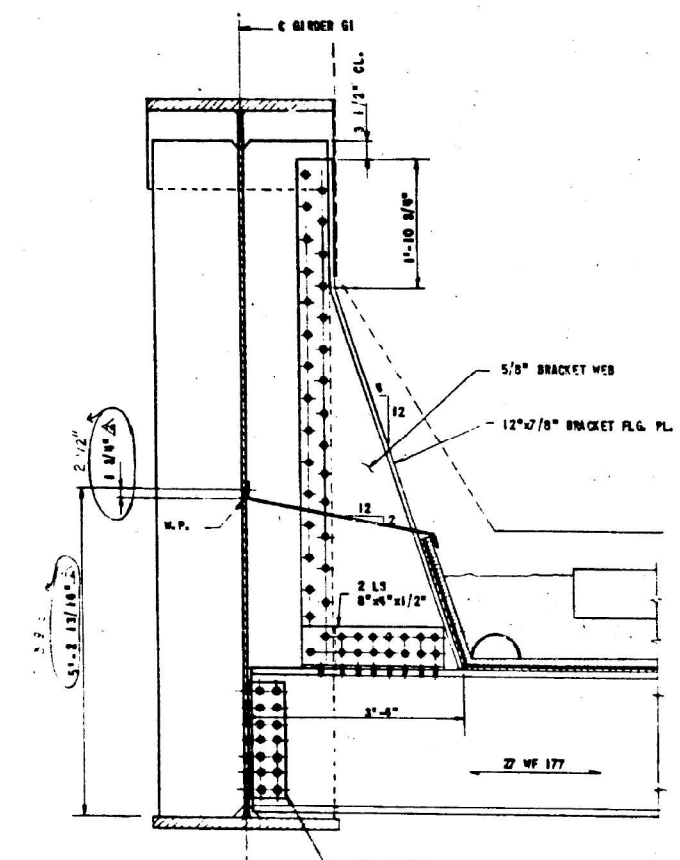
F.A.I. RTE.	SECTION	COUNTY	TOTAL SHEETS	SHEET NO.
57	FAI 57 23 BP2	COOK	26	18
CONTRACT NO. 62V24				
ILLINOIS FED. AID PROJECT				

FOR INFORMATION ONLY

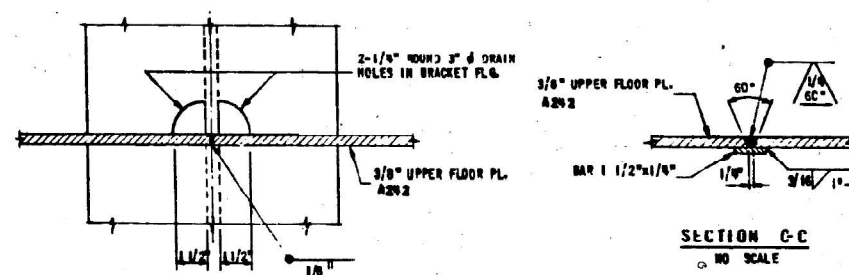


DETAIL OF GIRDER G1 AT SOUTH ABUTMENT

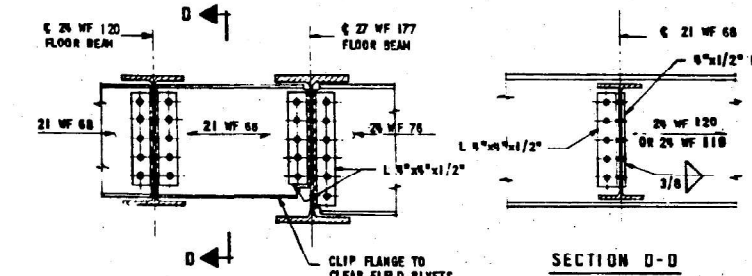
DETAIL OF GIRDER G1 AT NORTH ABUTMENT



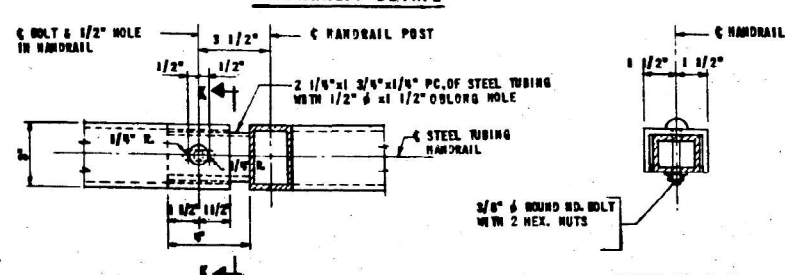
END BRACKET DETAIL - SECTION A-A
SCALE: 3/4" = 1'-0"



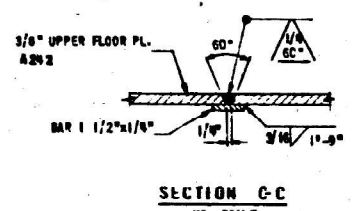
SECTION B-B
SCALE: 3" = 1'-0"



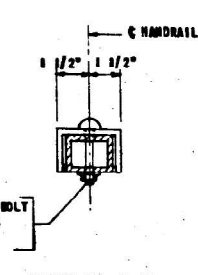
DIAPHRAGM DETAIL



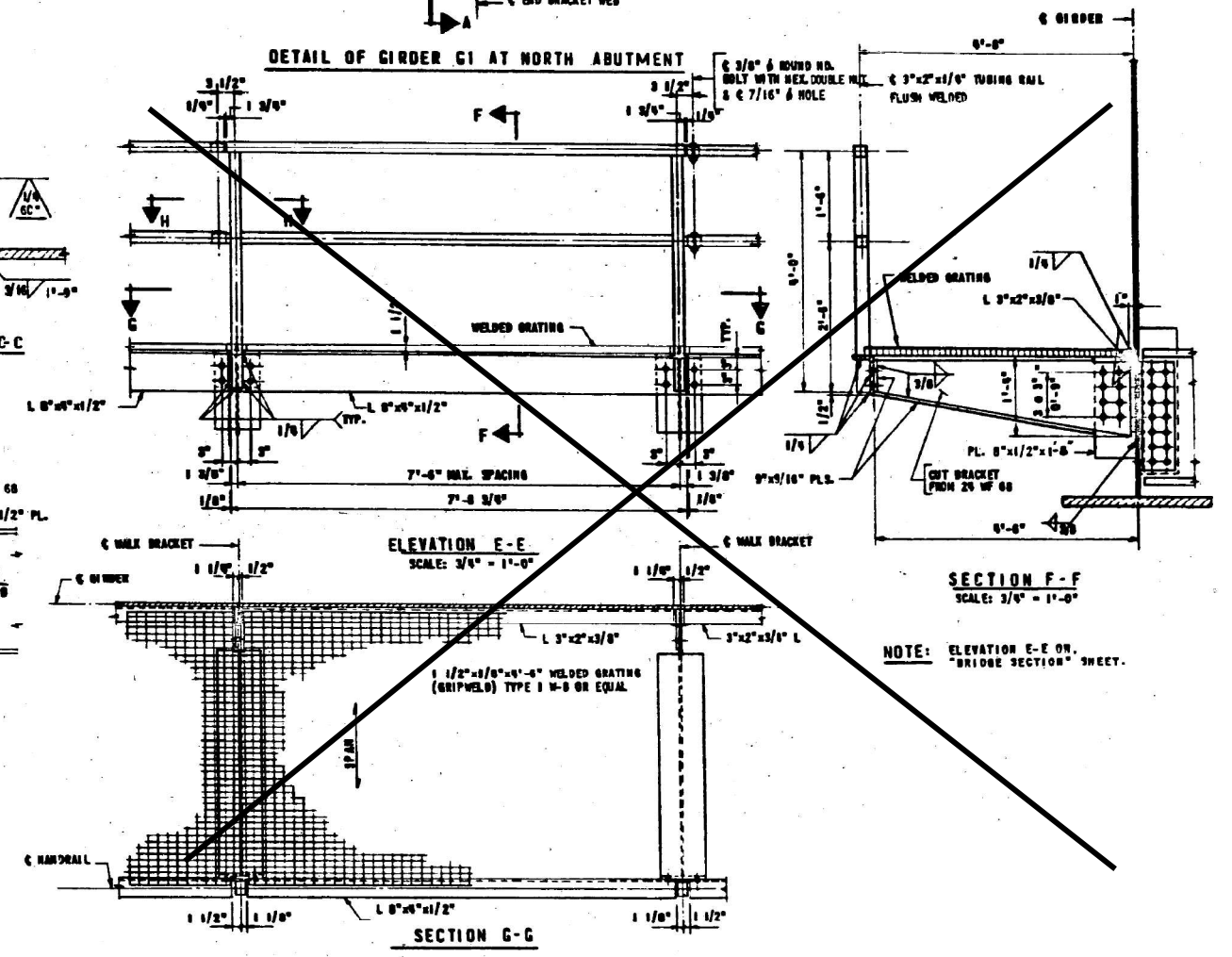
SECTION H-H
SCALE: 3" = 1'-0"



SECTION C-C
NO SCALE



SECTION K-K
SCALE: 3" = 1'-0"



ELEVATION E-E
SCALE: 3/4" = 1'-0"

SECTION G-G

SECTION F-F
SCALE: 3/4" = 1'-0"

NOTE: ELEVATION E-E ON "BRIDGE SECTION" SHEET.

MODEL: D:\m107 (Sheet) FILE NAME: p:\bbspc\p\dot\documents\DOT Office\Direct\1.0\RD Project\10332\ACADD\Drawings\CAD\sheet\10332-1p-02-2024.dwg

USER NAME = Cesar, Dominguez	DESIGNED -	REVISED -
DRAWN -	REVISOR -	
PLOT SCALE = 0.16666633 / in.	CHECKED -	REVISOR -
PLOT DATE = 12/7/2023	DATE -	REVISOR -

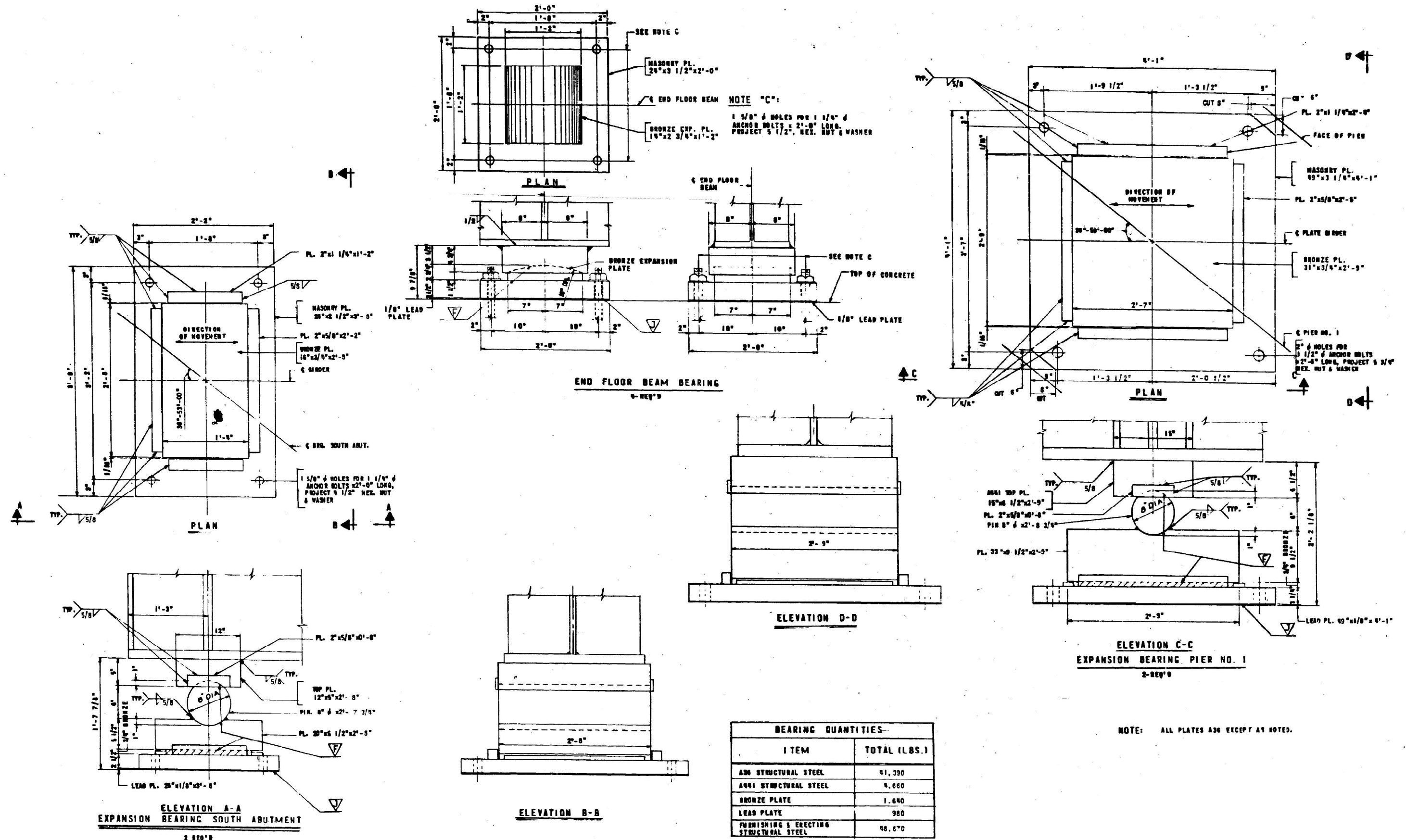
STATE OF ILLINOIS
DEPARTMENT OF TRANSPORTATION

FLOOR PLATE DETAILS
LOCATION 2: SN 016-0070

SCALE: SHEET 7 OF 9 SHEETS STA. TO STA.

F.A.I. RTE.	SECTION	COUNTY	TOTAL SHEETS	SHEET NO.
57	FAI 57 23 BP2	COOK	26	19
CONTRACT NO. 62V24				
ILLINOIS FED. AID PROJECT				

FOR INFORMATION ONLY



MODEL: D:\a1108 (Sheet) FILE NAME: P:\PROJECTS\Documents\DOT Office\Direct\1.0\RD Project\10332\ACADD\Drawings\CD\bearing.dwg
 PLOT DATE = 12/7/2023

USER NAME = Cesar, Dominguez	DESIGNED -	REVISED -
PLOT SCALE = 0.16666633 1/16"	DRAWN -	REVISED -
PLOT DATE = 12/7/2023	CHECKED -	REVISED -
	DATE -	REVISED -

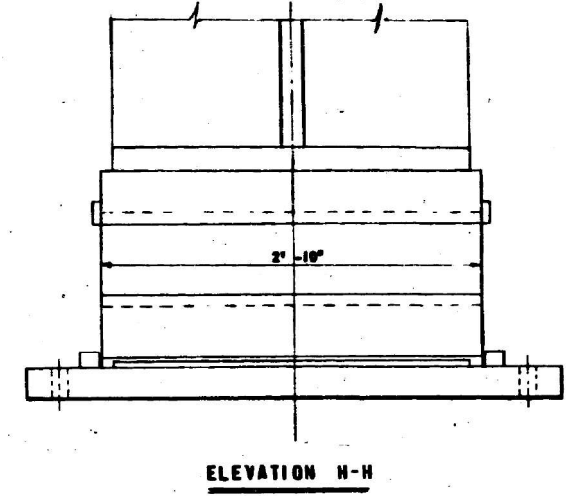
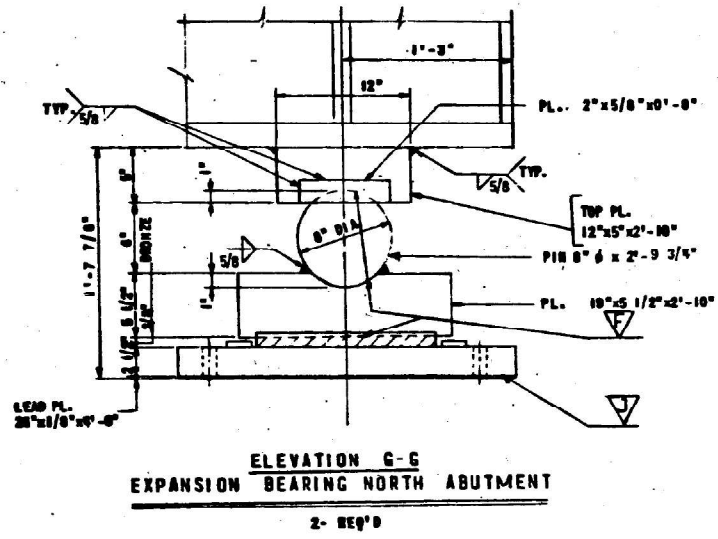
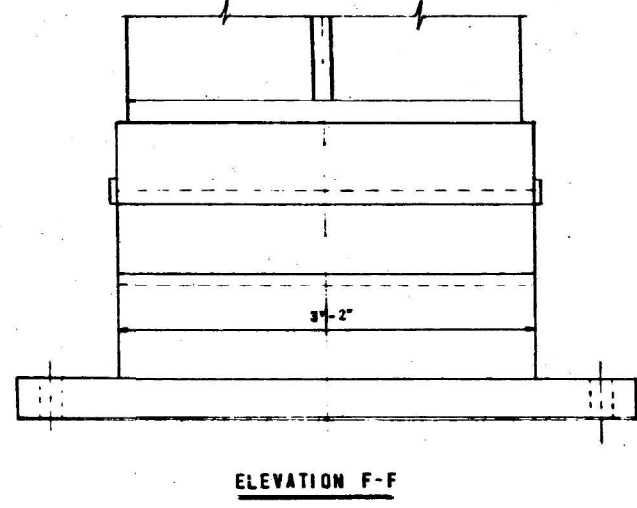
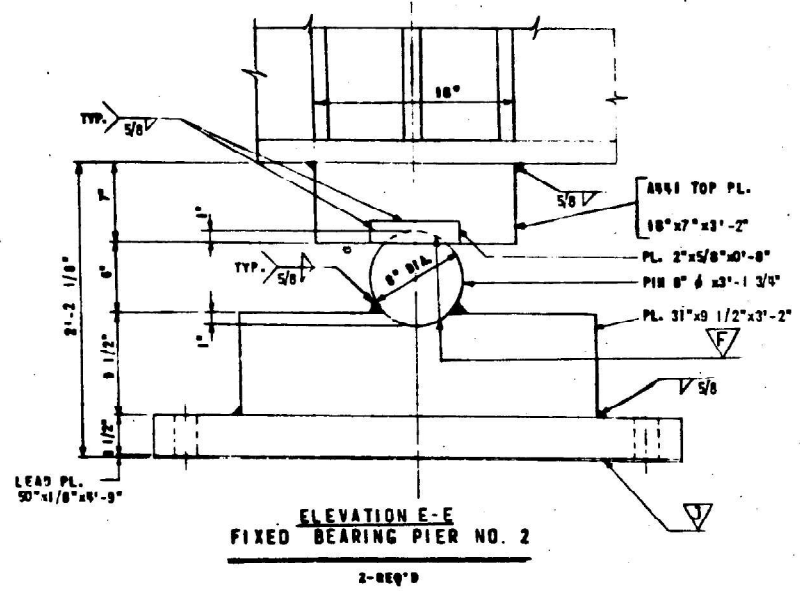
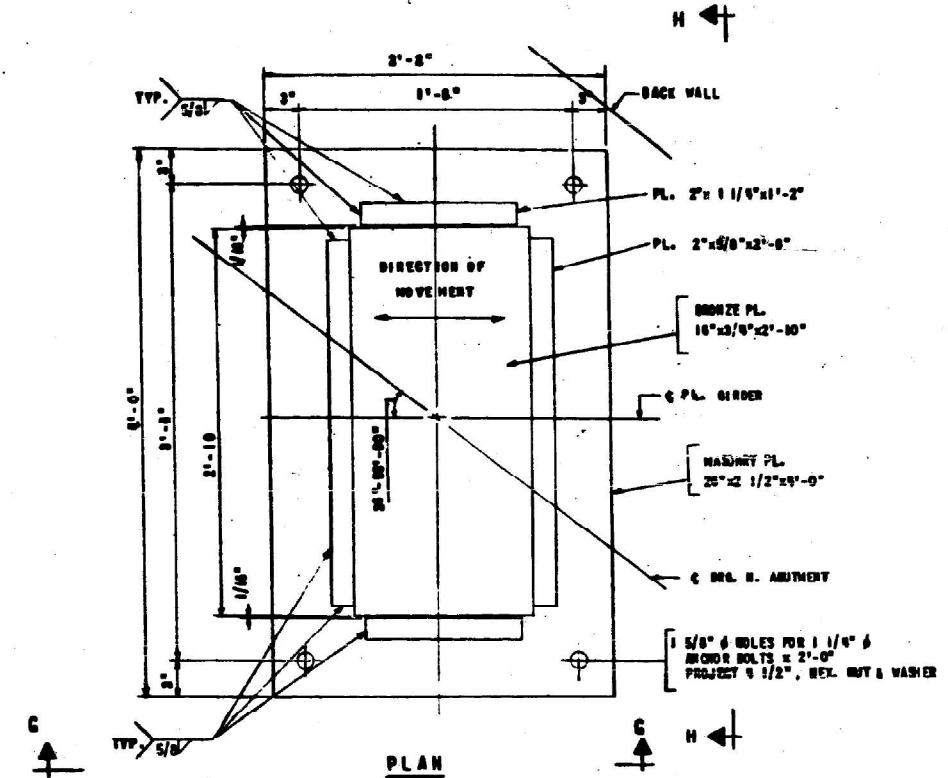
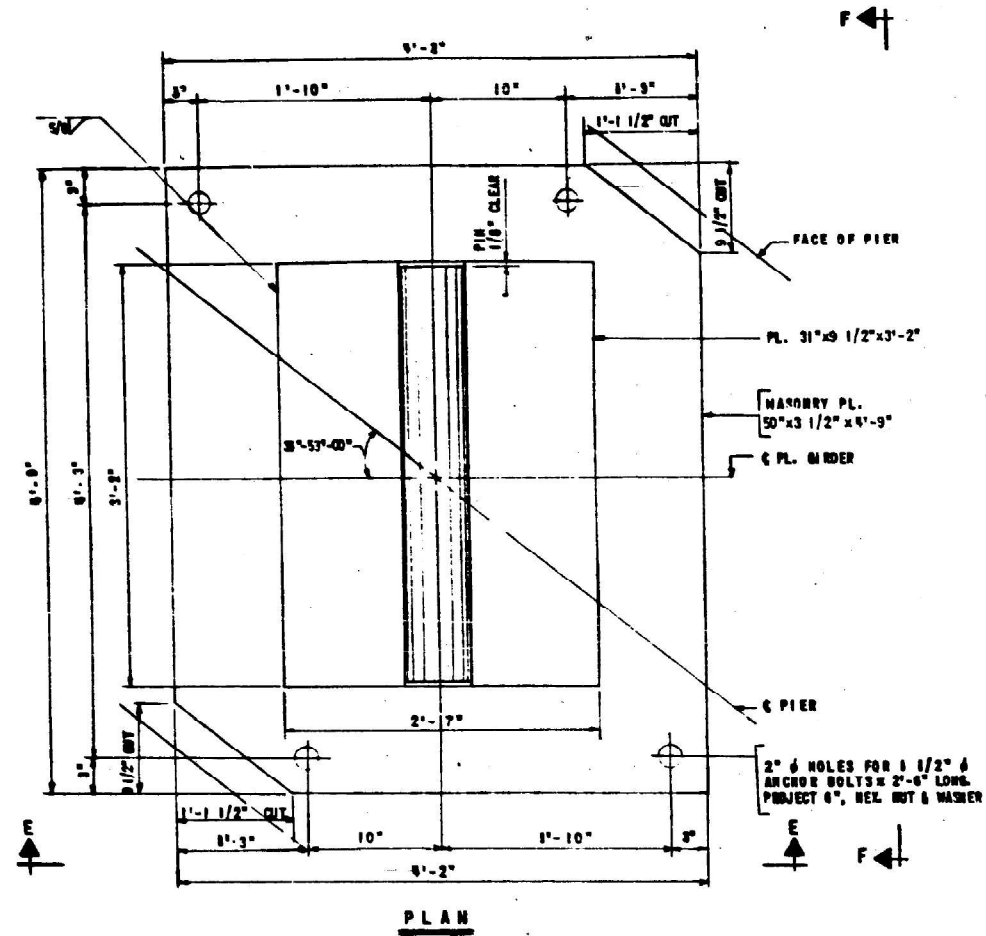
STATE OF ILLINOIS
DEPARTMENT OF TRANSPORTATION

BEARING DETAILS
LOCATION 2: SN 016-0070

SCALE: SHEET 8 OF 9 SHEETS STA. TO STA.

F.A.I. RTE.	SECTION	COUNTY	TOTAL SHEETS	SHEET NO.
57	FAI 57 23 BP2	COOK	26	20
			CONTRACT NO. 62V24	
ILLINOIS FED. AID PROJECT				

FOR INFORMATION ONLY



NOTE: ALL PLATES A36, EXCEPT AS NOTED.

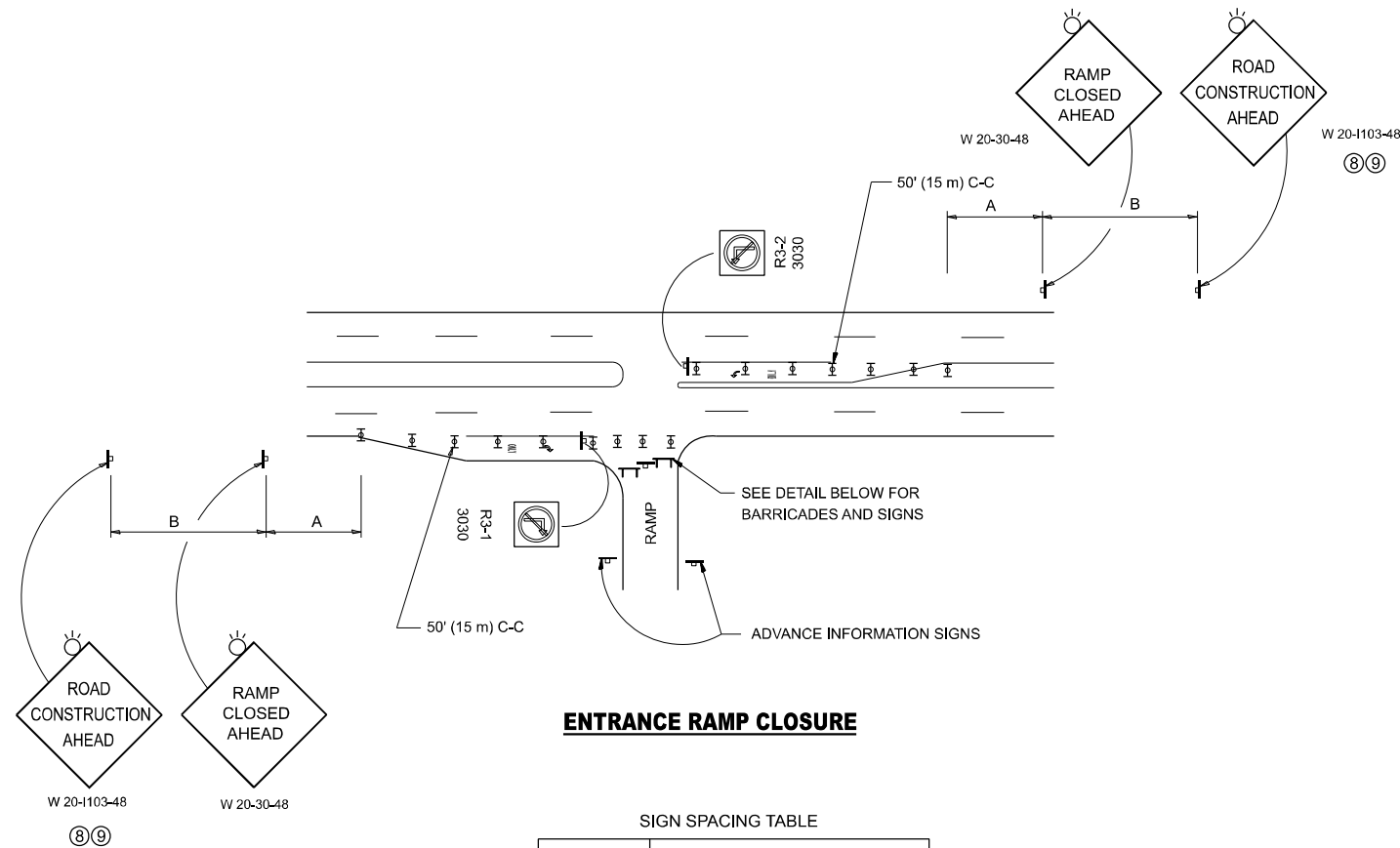
MODEL: D:\m100 (Sheet) FILE NAME: P:\PROJECTS\Documents\DOT Office\District 1\ORD Project\010323\CAD\Drawings\CAD\Sheet\010323-14-02.dwg

USER NAME = Cesar.Dominguez	DESIGNED -	REVISED -
PLOT SCALE = 0.16666633' / in.	DRAWN -	REVISED -
PLOT DATE = 12/7/2023	CHECKED -	REVISED -
	DATE -	REVISED -

STATE OF ILLINOIS
DEPARTMENT OF TRANSPORTATION

BEARING DETAILS	
LOCATION 2: SN 016-0070	
SCALE:	TO STA.
SHEET 9	OF 9 SHEETS

F.A.I. RTE.	SECTION	COUNTY	TOTAL SHEETS	SHEET NO.
57	FAI 57 23 BP2	COOK	26	21
CONTRACT NO. 62V24				
ILLINOIS FED. AID PROJECT				

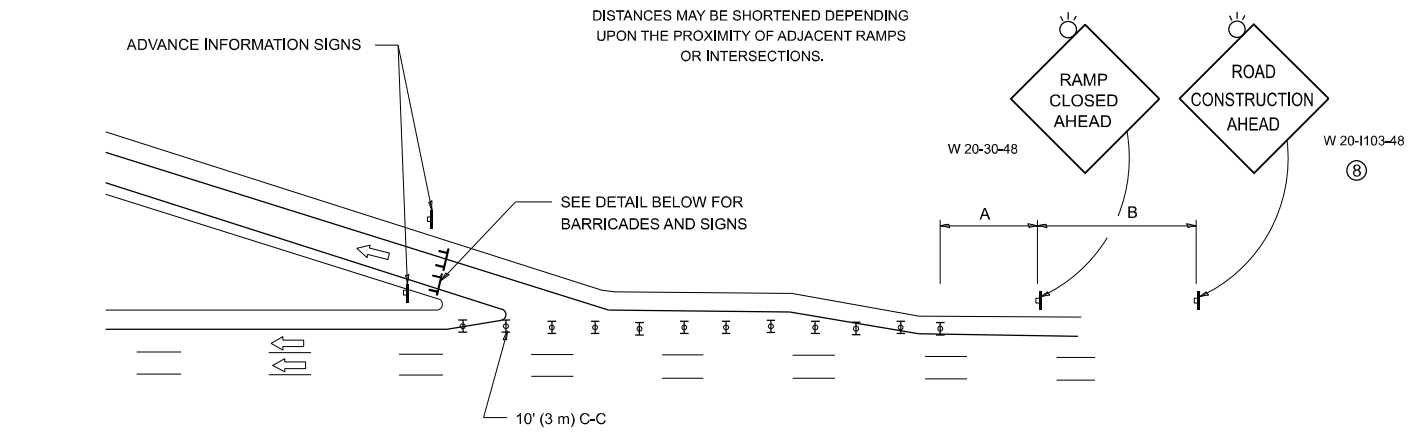


ENTRANCE RAMP CLOSURE

SIGN SPACING TABLE

FACILITY	DISTANCE BETWEEN SIGNS	
	A	B
EXPRESSWAY >24 HOURS	1000' (300 m)	1500' (450 m)
EXPRESSWAY ≤24 HOURS	500' (150 m)	500' (150 m)
ARTERIAL 55 MPH	500' (150 m)	500' (150 m)
ARTERIAL 50-45 MPH	350' (100 m)	350' (100 m)
ARTERIAL <45 MPH	200' (60 m)	200' (60 m)

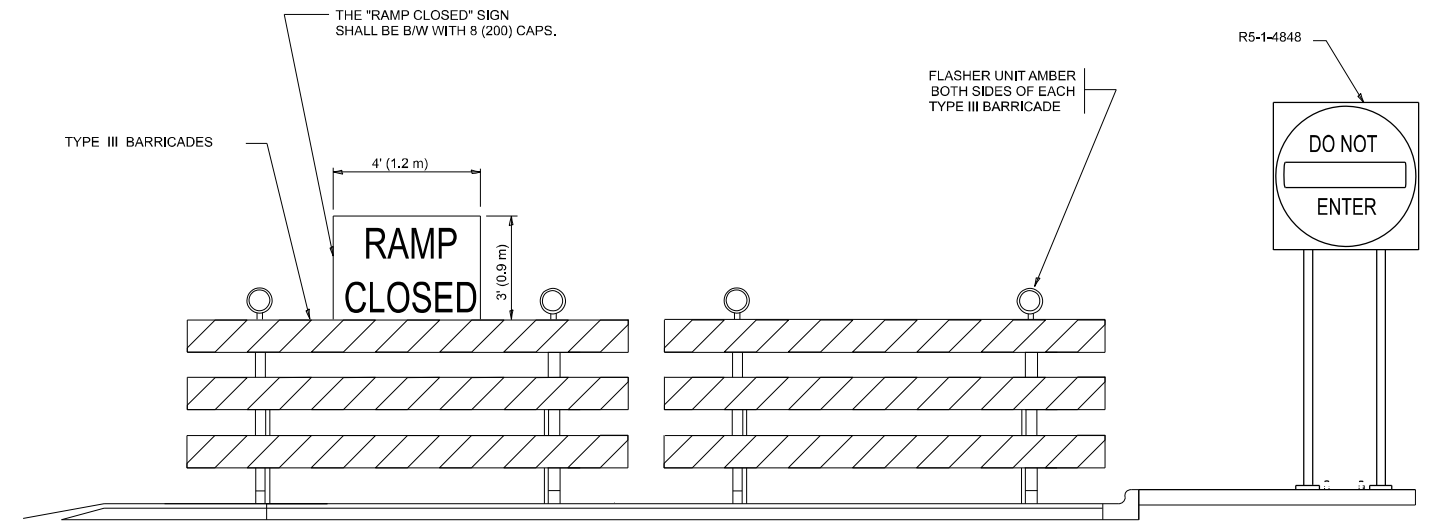
DISTANCES MAY BE SHORTENED DEPENDING UPON THE PROXIMITY OF ADJACENT RAMPS OR INTERSECTIONS.



EXIT RAMP CLOSURE

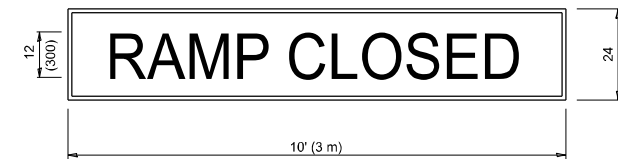
SYMBOLS

- ▬ TYPE II BARRICADE OR DRUM
- ▬ TYPE III BARRICADE WITH 2 FLASHING LIGHTS



DETAIL FOR REQUIRED BARRICADES & SIGNS

RAMP CLOSURE ADVANCE WARNING SIGN



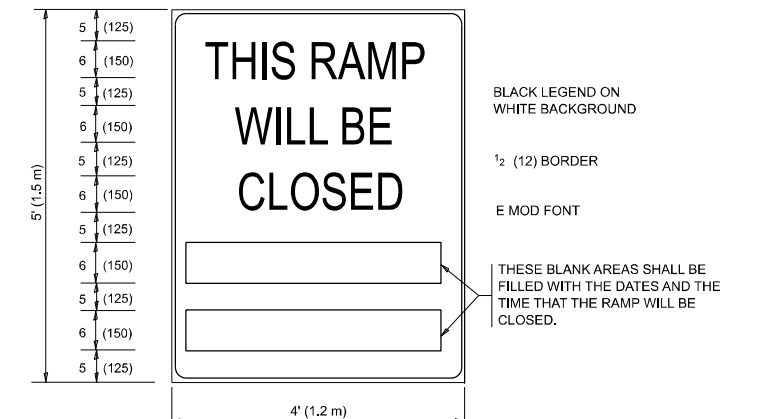
BLACK LEGEND ON ORANGE BACKGROUND MOUNTED DIAGONALLY
E MOD FONT
1 1/2 (125) BORDER

THESE SIGNS ARE REQUIRED ON ALL THE EXIT GUIDE SIGNS FOR EXIT RAMPS THAT WILL BE CLOSED FOR MORE THAN FOUR (4) CONSECUTIVE DAYS.

THESE SIGNS ARE REQUIRED ON BOTH SIDES OF THE RAMP, MINIMUM OF 1 WEEK IN ADVANCE OF THE CLOSURE.

THESE SIGNS SHALL BE FABRICATED AND PAID FOR ACCORDING TO THE TEMPORARY INFORMATION SIGNING SPECIAL PROVISION

RAMP CLOSURE ADVANCE INFORMATION SIGN



BLACK LEGEND ON WHITE BACKGROUND

1/2 (12) BORDER

E MOD FONT

THESE BLANK AREAS SHALL BE FILLED WITH THE DATES AND THE TIME THAT THE RAMP WILL BE CLOSED.

GENERAL NOTES:

- 1 CONES MAY BE SUBSTITUTED FOR DRUMS OR TYPE II BARRICADES DURING DAY OPERATIONS. CONES SHALL BE A MINIMUM OF 28 (700) HIGH.
- 2 VERTICAL BARRICADES SHALL NOT BE USED FOR RAMP CLOSURES.
- 3 A FLAGGER SHALL BE POSITIONED AT EACH CLOSED RAMP THAT IS OPEN TO CONSTRUCTION VEHICLES, PRECEDED BY A W20-7 FLAGGER WARNING SIGN.
- 4 ALL ROUTE MARKERS AND TRAILBLAZER ASSEMBLIES WHICH DIRECT MOTORISTS TO A CLOSED ENTRANCE RAMP SHALL BE COVERED WHEN THE RAMP IS CLOSED FOR MORE THAN FOUR (4) DAYS.
- 5 THE SIGNING AND BARRICADING WHICH IS REQUIRED BY THIS DETAIL SHALL BE INCLUDED IN THE COST OF TRAFFIC CONTROL AND PROTECTION (EXPRESSWAYS).
- 6 AUTHORIZATION FROM THE DISTRICT'S BUREAU OF TRAFFIC IS REQUIRED FOR ALL RAMP CLOSURES.
- 7 THE RAMP CLOSURE ADVANCE INFORMATION SIGNS SHALL BE ERECTED IF THE CLOSURE TIME EXCEEDS TWENTY-FOUR (24) HOURS. ADDITIONAL ADVANCE WARNING SIGNS ON EXIT GUIDE SIGNING WILL BE REQUIRED FOR EXIT RAMP CLOSURES THAT EXCEED FOUR (4) DAYS IN LENGTH
- 8 ROAD CONSTRUCTION AHEAD SIGNS MAY BE OMITTED WHEN THIS DETAIL IS USED IN CONJUNCTION WITH OTHER TRAFFIC CONTROL THAT ALREADY INCLUDES A ROAD CONSTRUCTION AHEAD SIGN.
- 9 ARTERIAL ROAD CONSTRUCTION AHEAD SIGNS SHALL BE INSTALLED ON THE LEFT SIDE OF TRAFFIC IF THE MEDIAN IS MORE THAN 10 FT WIDE.

ALL DIMENSIONS ARE IN INCHES (MILLIMETERS) UNLESS OTHERWISE SHOWN.

MODEL: TC-08 (Sheet)
FILE NAME: c:\p\work\wv\illinois\gov\dm\dominguez@illinois.gov\0223642\0100324-sh-ramp-closure.dwg

USER NAME = Cesar, Dominguez	DESIGNED - D.W.S.	REVISED - S.P.B._01-07
PLOT SCALE = 0.16666633 1/ in.	DRAWN -	REVISED - S.P.B._12-09
PLOT DATE = 10/23/2023	CHECKED -	REVISED - M.D._06-13
	DATE - 02-83	REVISED - M.D._01-18

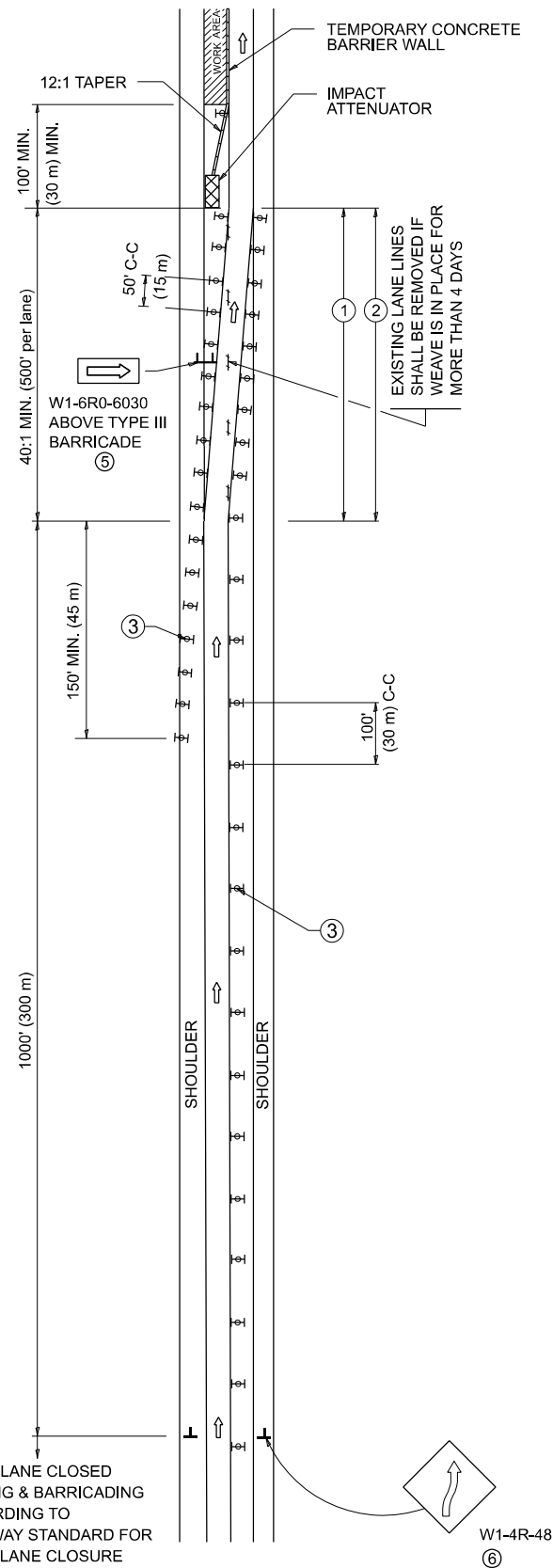
**STATE OF ILLINOIS
DEPARTMENT OF TRANSPORTATION**

**ENTRANCE AND EXIT RAMP
CLOSURE DETAILS**

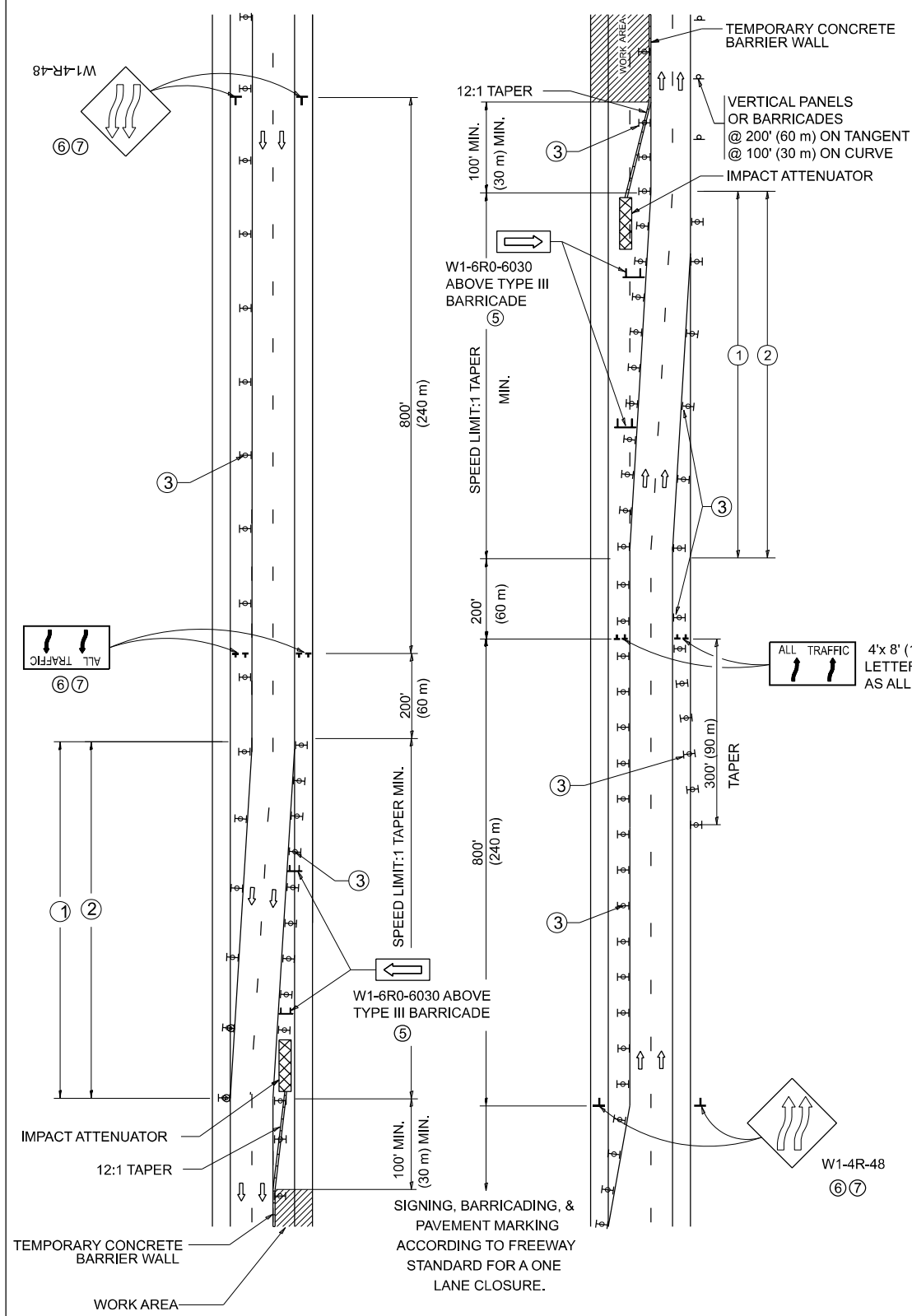
SCALE: NONE SHEET 1 OF 1 SHEETS STA. TO STA.

F.A.I. RTE.	SECTION	COUNTY	TOTAL SHEETS	SHEET NO.
57	FAI 57 23 BP2	COOK	26	22
TC-08			CONTRACT NO. 62V24	
		ILLINOIS	FED. AID PROJECT	

SINGLE LANE WEAVE



MULTI-LANE WEAVE



GENERAL NOTES:

- ① EXISTING CONFLICTING PAVEMENT MARKING LINES SHALL BE REMOVED. PAVEMENT MARKING REMOVAL SHALL NOT BE REQUIRED FOR SINGLE LANE WEAVES UNDER 4 DAYS IN DURATION.
- ② CONTINUOUS REFLECTIVE TEMPORARY PAVEMENT MARKING TAPE SHALL BE PLACED THROUGHOUT THE TAPER AND FOR 300' (90 m) ALONG SIDE THE WORK AREA WHERE THE CLOSURE TIME IS GREATER THAN FOURTEEN DAYS. THE LEFT EDGE LINE SHALL BE YELLOW AND THE RIGHT EDGE LINE SHALL BE WHITE, FOR MULTI-LANE WEAVES LANE LINES SHALL BE 5 INCH, 10'-30' (3 m-9 m) SKIP DASH, WHITE.
- ③ PLASTIC DRUMS WITH STEADY BURN LIGHTS AT 50' (15 m) C-C SPACING IN TAPERS AND 100' (30 m) C-C SPACING IN TANGENTS.
- ④ ALL SIGNS SHALL BE POST MOUNTED IF THE CLOSURE TIME EXCEEDS FOUR DAYS.
- ⑤ TYPE III BARRICADES MAY BE OMITTED FOR SINGLE-LANE WEAVES UNDER 24-HOURS IN DURATION. W1-6 SIGNS WILL STILL BE REQUIRED. IF THE WIDTH OF OFFSET IS LESS THAN 6' THEN THE TYPE III BARRICADE WITH ATTACHED ARROW SIGN PANEL CAN BE ELIMINATED IN THE TAPER AREAS.
- ⑥ WHEN THE LENGTH OF THE SHIFTED SEGMENT (DISTANCE BETWEEN WEAVE POINTS) IS LESS THAN 1500', DOUBLE REVERSE CURVE SIGNS (W24-1) SHOULD BE USED INSTEAD OF THE REVERSE CURVE (W1-4) SIGNS. ARROWS ON THE 4'X8' "ALL TRAFFIC" SIGNS SHALL BE THE SAME SHAPE.
- ⑦ THE NUMBER OF ARROWS ON THESE SIGNS SHALL MATCH THE NUMBER OF LANES OPEN TO TRAFFIC.

SYMBOLS

- DIRECTION OF TRAFFIC
- WORK AREA
- SIGN ON PORTABLE OR PERMANENT SUPPORT
- TYPE II BARRICADE OR DRUM WITH MONO-DIRECTIONAL STEADY BURNING LIGHT
- TEMPORARY CONCRETE BARRIER WALL
- IMPACT ATTENUATOR
- W1-4R-48
- W24-1-48

ALL DIMENSIONS ARE IN INCHES (MILLIMETERS) UNLESS OTHERWISE SHOWN

MODEL: TC-09 (Sheet) FILE NAME: c:\p\work\wv\to\cesar.dominguez@illinois.gov\d023642\0100324-sh-Dist\Sis.dgn

USER NAME = Cesar.Dominguez	DESIGNED - D.W.S.	REVISED - J.A.F. 02-06
PLOT SCALE = 0.16666633' / in.	CHECKED -	REVISED - S.P.B. 01-07
PLOT DATE = 10/18/2023	DATE - 02-87	REVISED - S.P.B. 12-09
		REVISED - M.D. 06-13

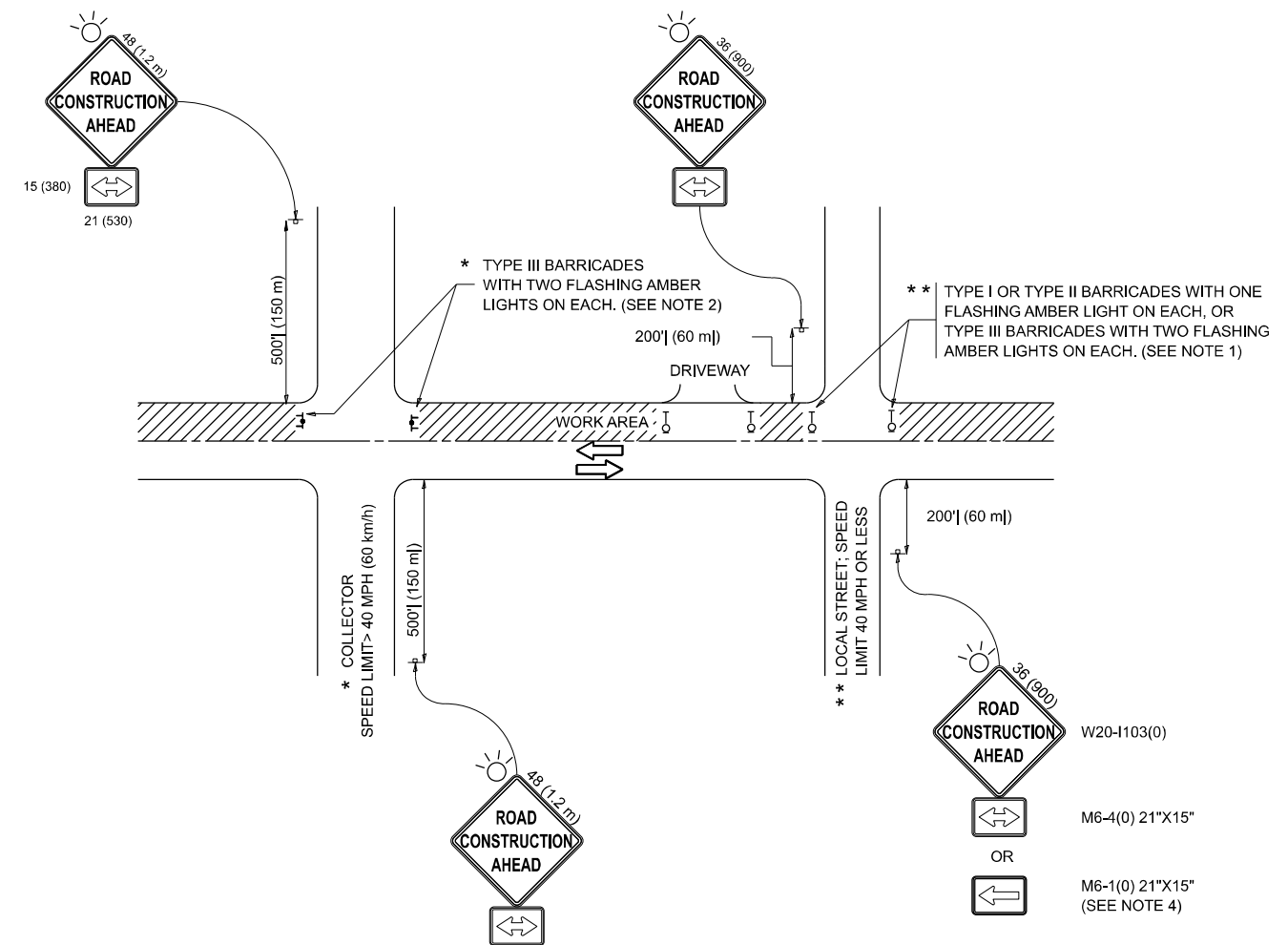
STATE OF ILLINOIS
DEPARTMENT OF TRANSPORTATION

TRAFFIC CONTROL DETAILS FOR
FREEWAY SINGLE & MULTI-LANE WEAVE

SCALE: NONE SHEET 1 OF 1 SHEETS STA. TO STA.

F.A.I. RTE.	SECTION	COUNTY	TOTAL SHEETS	SHEET NO.
57	FAI 57 23 BP2	COOK	26	23
TC-09		CONTRACT NO. 62V24		
ILLINOIS FED. AID PROJECT				

MODEL: TC-10 (Sheet)
 FILE NAME: c:\p\work\wv\to\cesar.dominguez@illinois.gov\d0923642\0100324-sh-Dis\Sigs.dgn



NOTES:

1. SIDE ROAD WITH A SPEED LIMIT OF 40 MPH (60 km/h) OR LESS AS SHOWN ON THE DRAWING AND AS DIRECTED BY THE ENGINEER:
 - a) ONE "ROAD CONSTRUCTION AHEAD" SIGN 36 x 36 (900x900) WITH A FLASHER MOUNTED ON IT APPROXIMATELY 200' (60 m) IN ADVANCE OF THE MAIN ROUTE.
 - b) THE CLOSED PORTION OF THE MAIN ROUTE SHALL BE PROTECTED BY BLOCKING WITH TYPE I, TYPE II OR TYPE III BARRICADES, 1/3 OF THE CROSS SECTION OF THE CLOSED PORTION.
2. SIDE ROAD WITH A SPEED LIMIT GREATER THAN 40 MPH (60 km/h) AS SHOWN ON THE DRAWING AND AS DIRECTED BY THE ENGINEER:
 - a) ONE "ROAD CONSTRUCTION AHEAD" SIGN 48 x 48 (1.2 m x 1.2 m) WITH A FLASHER MOUNTED ON IT APPROXIMATELY 500' (150 m) IN ADVANCE OF THE MAIN ROUTE.
 - b) THE CLOSED PORTION OF THE MAIN ROUTE SHALL BE PROTECTED BY BLOCKING WITH TYPE III BARRICADES, 1/2 OF THE CROSS SECTION OF THE CLOSED PORTION.
3. CONES MAY BE SUBSTITUTED FOR BARRICADES OR DRUMS AT HALF THE SPACING DURING DAY OPERATIONS. CONES SHALL BE A MINIMUM OF 28 (710) IN HEIGHT.
4. WHEN THE SIDE ROAD LIES BETWEEN THE BEGINNING OF THE MAINLINE SIGNING AND THE WORK ZONE, A SINGLE HEADED ARROW (M6-1) SHALL BE USED IN LIEU OF THE DOUBLE HEADED ARROW (M6-4).
5. WHEN WORK IS BEING PERFORMED ON A SIDE ROAD OR DRIVEWAY, FOLLOW THE APPLICABLE STANDARD(S). THE DIRECTIONAL ARROW (M6-1 OR M6-4) SHALL BE COVERED OR REMOVED WHEN NO LONGER CONSISTENT WITH THE TRAFFIC CONTROL SET-UP.
6. ADVANCE WARNING SIGNS ARE TO BE OMITTED ON DRIVEWAYS UNLESS OTHERWISE SPECIFIED IN THE PLANS OR BY THE ENGINEER.
7. THE TRAFFIC CONTROL AND PROTECTION FOR SIDE ROADS, INTERSECTIONS, AND DRIVEWAYS SHALL BE INCLUDED IN THE COST OF SPECIFIED TRAFFIC CONTROL STANDARDS OR ITEMS.

All dimensions are in inches (millimeters) unless otherwise shown.

USER NAME = Cesar.Dominguez	DESIGNED - L.H.A.	REVISED - A. HOUSEH 10-15-96
PLOT SCALE = 0.16666633" / in.	CHECKED -	REVISED - T. RAMMACHER 01-06-00
PLOT DATE = 10/23/2023	DATE - 06-89	REVISED - A. SCHUETZE 07-01-13
		REVISED - A. SCHUETZE 09-15-16

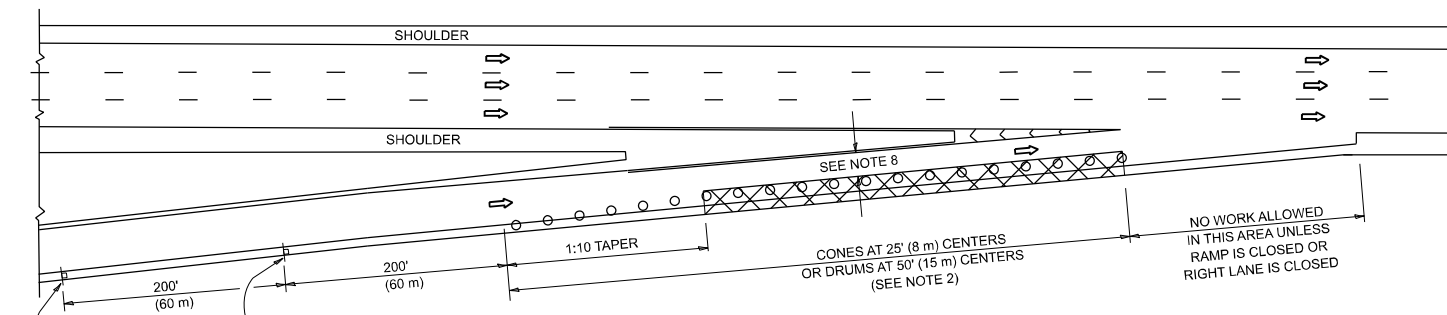
**STATE OF ILLINOIS
 DEPARTMENT OF TRANSPORTATION**

**TRAFFIC CONTROL AND PROTECTION FOR
 SIDE ROADS, INTERSECTIONS, AND DRIVEWAYS**

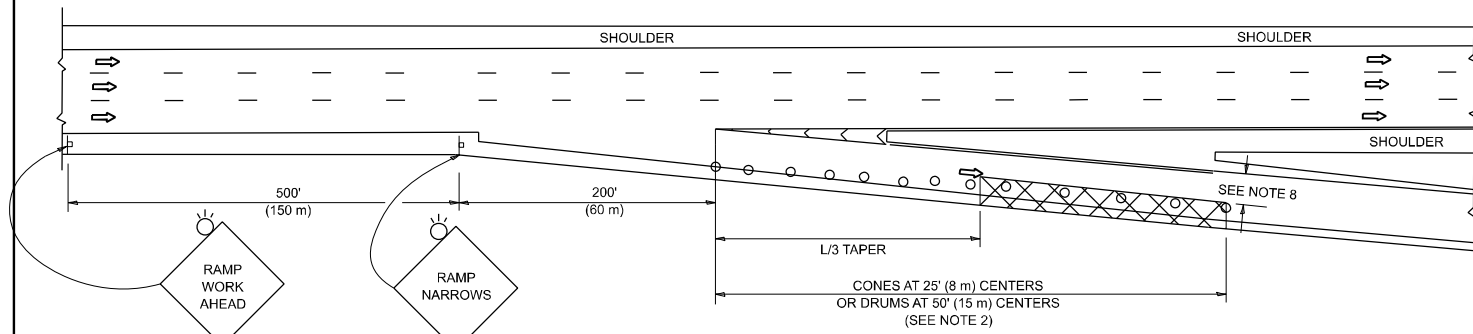
SCALE: SHEET OF SHEETS STA. TO STA.

F.A.I. RTE.	SECTION	COUNTY	TOTAL SHEETS	SHEET NO.
57	FAI 57 23 BP2	COOK	26	24
TC-10			CONTRACT NO. 62V24	
ILLINOIS FED. AID PROJECT				

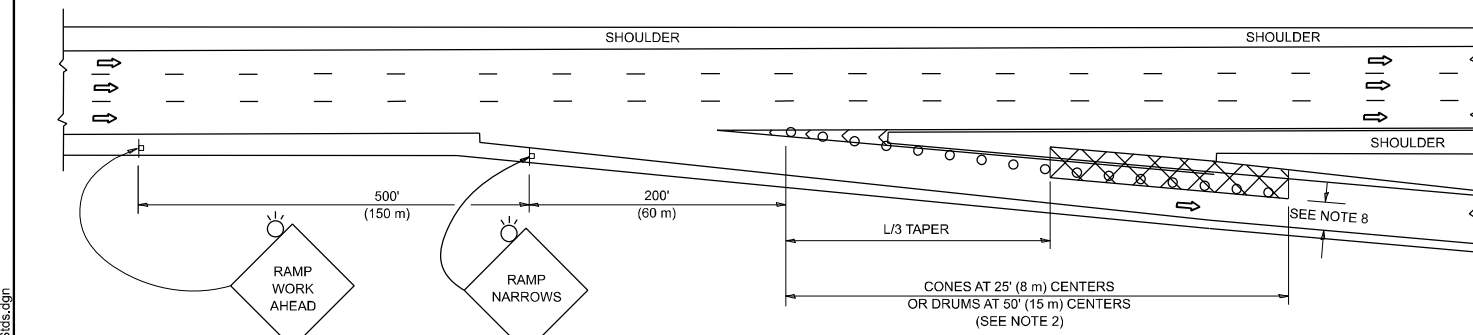
PARTIAL RAMP CLOSURE DETAILS



TYPICAL ENTRANCE RAMP



TYPICAL EXIT RAMP



TYPICAL EXIT RAMP

SYMBOLS

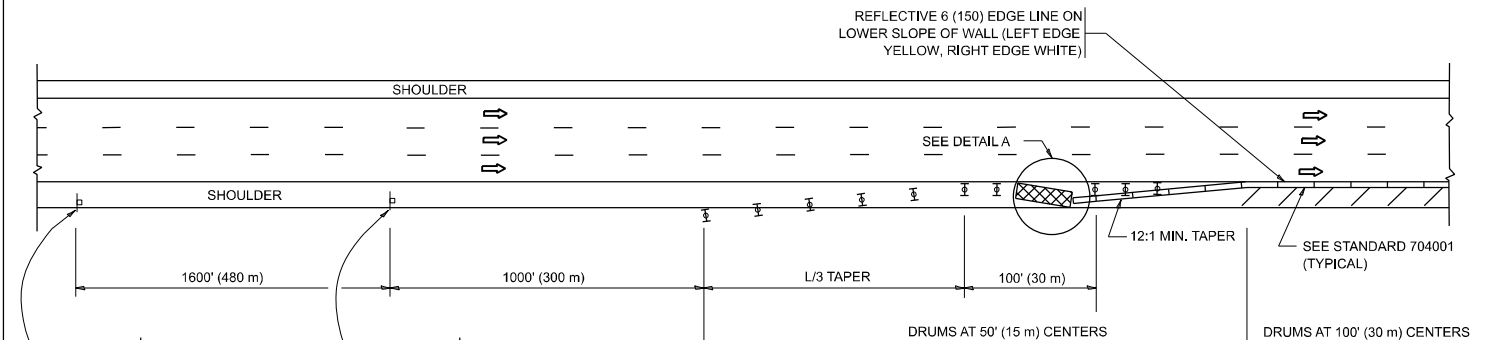
- ACTIVE WORK AREA
- SIGN ON PORTABLE OR PERMANENT SUPPORT
- FLAGGER WITH CONTROL SIGN
- TYPE II BARRICADE OR DRUM
- CONE, DRUM OR BARRICADE
- IMPACT ATTENUATOR OF TYPE AND TEST LEVEL SPECIFIED

GENERAL NOTES:

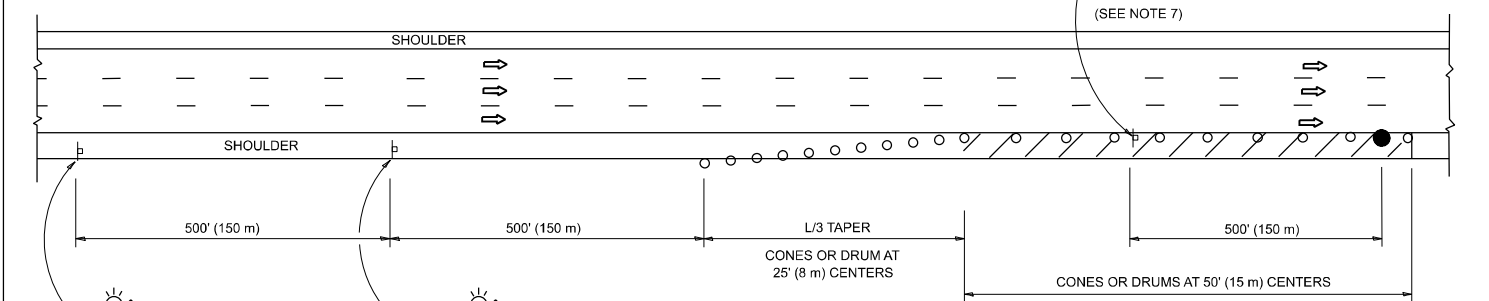
1. THE "L" DISTANCE EQUALS:

SPEED LIMIT	FORMULAS
45 mph (80 km/h) OR GREATER:	METRIC ENGLISH L=0.65(W)(S) L=(W)(S)
W = WIDTH OF OFFSET IN FEET (METERS) S = NORMAL POSTED SPEED MPH (KM/H)	
2. TYPE II BARRICADES OR DRUMS ARE REQUIRED FOR ALL NIGHTTIME CLOSURES. TYPE II BARRICADES OR DRUMS WITH MONODIRECTIONAL STEADY BURN LIGHTS ARE REQUIRED FOR DELINEATING OBSTACLES, EXCAVATIONS, OR HAZARDS EXCEEDING 100 FT (30m) IN LENGTH AT NIGHT.
3. ALL SIGNS SHALL BE POST MOUNTED IF THE CLOSURE TIME EXCEEDS FOUR DAYS.
4. FLASHING LIGHTS SHALL BE USED DURING THE HOURS OF DARKNESS AND SHALL BE INSTALLED ABOVE THE FIRST TWO SETS OF SIGNS.

SHOULDER CLOSURE DETAILS



PERMANENT SHOULDER CLOSURE



TEMPORARY SHOULDER CLOSURE

- THIS DETAIL IS USED WHERE:
1. VEHICLES, EQUIPMENT, WORKERS OR THEIR ACTIVITIES ENCR OACH IN AN AREA CLOSER THAN 15' (4.5 m) TO THE EDGE OF PAVEMENT FOR A PERIOD IN EXCESS OF 15 MINUTES.



**DETAIL "A"
IMPACT ATTENUATOR, TEMPORARY
(SEE NOTE 5)**

5. THE IMPACT ATTENUATOR, TEMPORARY IS NOT REQUIRED WHEN THE TEMPORARY CONCRETE BARRIER WALL IS PROTECTED BY OR IS TIED INTO THE EXISTING GUARDRAIL. IF OFFSET IS LESS THAN 5 FEET USE NARROW USE TYPE DEVICE TO MEET NCHRP350/MASH.
6. AUTHORIZATION FROM THE DISTRICT'S BUREAU OF TRAFFIC IS REQUIRED FOR ALL FREEWAY CLOSURES.
7. THE FLAGGER AND FLAGGER SIGN ARE REQUIRED AT THE ABOVE WORK SITES WHEN:
 - a. FOUR OR MORE WORK VEHICLES ENTER THE TRAFFIC LANES IN A ONE HOUR PERIOD.
 - b. THE WORK ACTIVITY REQUIRES FREQUENT ENCR OACHMENT INTO THE LANE OPEN TO TRAFFIC.
 THE FLAGGER SHALL BE STATIONED APPROXIMATELY 100' (30 m) TO 200' (60 m) IN ADVANCE OF THE WORKERS.

8. 12' MIN. WIDTH TANGENT SECTION
16' MIN. WIDTH CURVE SECTION.
9. TEMPORARY SHOULDER AND NON-SYSTEM INTERCHANGE PARTIAL RAMP CLOSURES ARE ALLOWED WEEKDAYS BETWEEN 9:00 A.M. AND 3:00 P.M. AND BETWEEN 7:00 P.M. AND 5:00 A.M. OR AS APPROVED BY THE EXPRESSWAY TRAFFIC OPERATIONS ENGINEER. PERMANENT SHOULDER AND PARTIAL RAMP CLOSURES WILL ONLY BE PERMITTED IF CALLED FOR IN THE PLANS OR AS APPROVED BY THE EXPRESSWAY OPERATIONS ENGINEER.

ALL DIMENSIONS ARE IN INCHES (MILLIMETERS) UNLESS OTHERWISE SHOWN.

MODEL: TC-17 (Sheet)
FILE NAME: c:\p\work\wv\illinois\dominguez@illinois.gov\d0923642\100324-sh-Dis\Sis.sgm

USER NAME = Cesar.Dominguez	DESIGNED -	REVISED - S.P.B. 12-09
	DRAWN - D.W.S.	REVISED - M.D. 06-13
PLOT SCALE = 0.16666833 / in.	CHECKED -	REVISED - M.D. 01-18
PLOT DATE = 10/23/2023	DATE - 11-96	REVISED - M.D. 10-20

**STATE OF ILLINOIS
DEPARTMENT OF TRANSPORTATION**

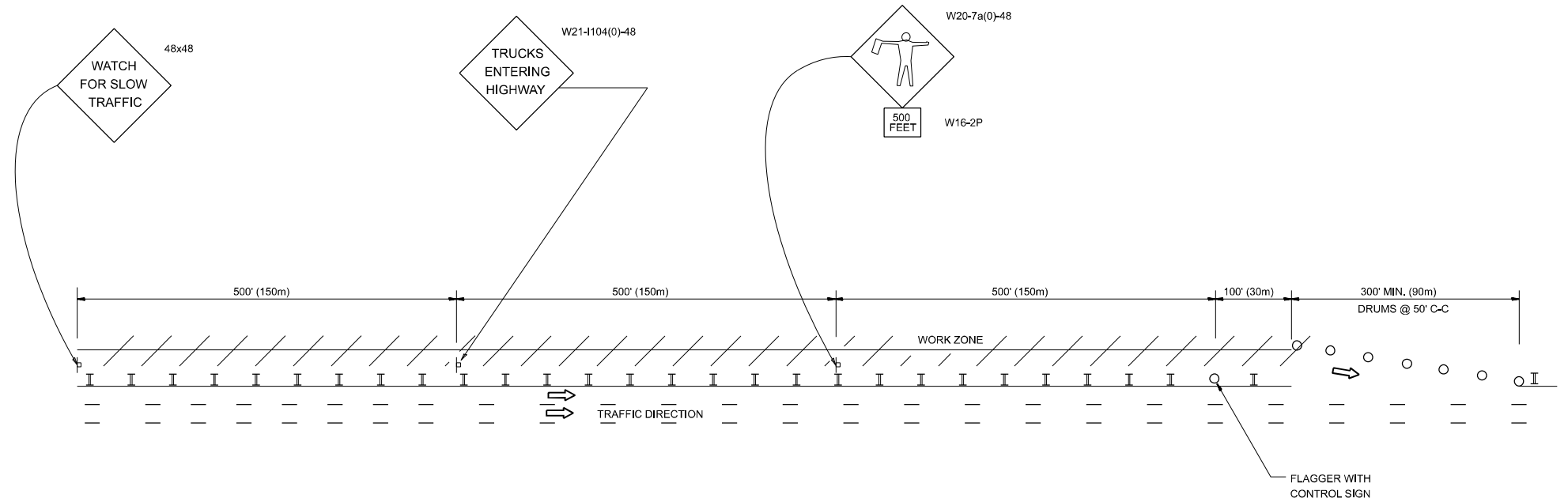
**TRAFFIC CONTROL DETAILS FOR FREEWAY
SHOULDER CLOSURES AND PARTIAL RAMP CLOSURES**

SCALE: NONE SHEET 1 OF 1 SHEETS STA. TO STA.

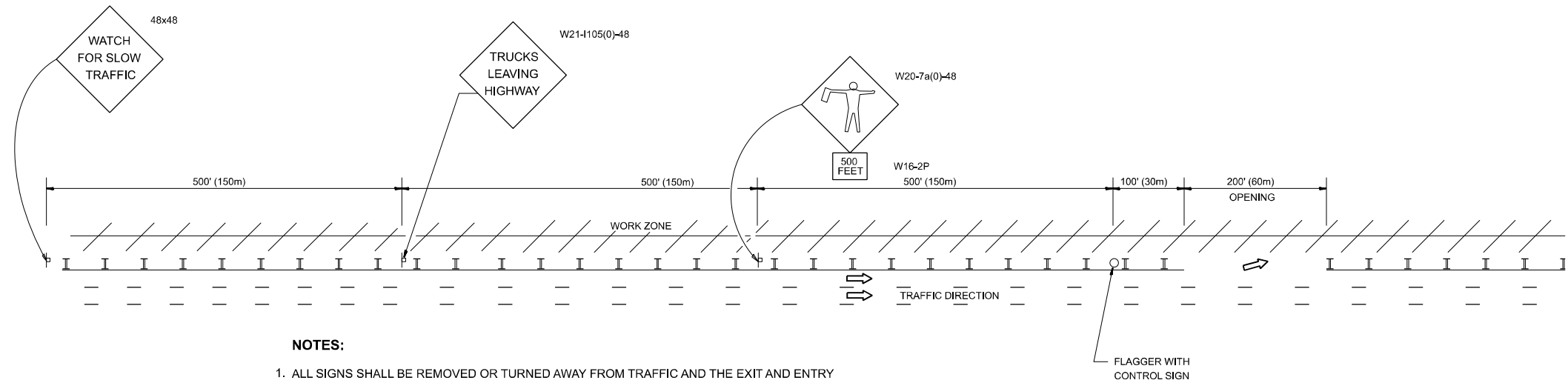
F.A.I. RTE.	SECTION	COUNTY	TOTAL SHEETS	SHEET NO.
57	FAI 57 23 BP2	COOK	26	25
TC-17			CONTRACT NO. 62V24	
ILLINOIS FED. AID PROJECT				

SIGNING FOR FLAGGING OPERATIONS AT WORK ZONE OPENINGS

WORK ZONE EXIT OPENING



WORK ZONE ENTRY OPENING



NOTES:

1. ALL SIGNS SHALL BE REMOVED OR TURNED AWAY FROM TRAFFIC AND THE EXIT AND ENTRY OPENINGS SHALL BE CLOSED WHEN THE FLAGGING OPERATION CEASES. NON OPERATING EQUIPMENT SHALL COMPLY WITH ARTICLE 701.11
2. WORK ZONE OPENINGS SHALL BE A MINIMUM OF ONE HALF MILE APART AND A MINIMUM OF ONE QUARTER MILE FROM ALL ENTRANCE AND EXIT RAMPS.
3. EXITING THE WORK ZONE AT ANY PLACE OTHER THAN AT A WORK ZONE EXIT OPENING WILL BE PROHIBITED.
4. ALL VEHICLES SHALL ENTER THE WORK ZONE AT ENTRY OPENINGS, USING THEIR TURN SIGNALS TO WARN MOTORISTS
5. FLAGGERS SHALL NOT STOP TRAFFIC OR DIRECT TRAFFIC INTO AN ADJACENT LANE.

ALL DIMENSIONS ARE IN INCHES (MILLIMETERS) UNLESS OTHERWISE SHOWN

MODEL: TC-18 (Sheet)
FILE NAME: c:\p\work\wv\to\cesar.dominguez@illinois.gov\d023642\0100324-sh-Dis\Sigs.dgn

USER NAME = Cesar.Dominguez	DESIGNED -
DRAWN -	REVISOR -
PLOT SCALE = 0.16666833 / in.	CHECKED -
PLOT DATE = 10/23/2023	DATE -

REVISED - J.A.F. 02-06
REVISED - S.P.B. 01-07
REVISED - S.P.B. 12-09
REVISED - M.D.06-13

**STATE OF ILLINOIS
DEPARTMENT OF TRANSPORTATION**

**FREEWAY / EXPRESSWAY SIGNING FOR FLAGGING OPERATIONS
AT WORK ZONE OPENINGS ON FREEWAYS / EXPRESSWAYS**

SCALE: NONE SHEET 1 OF 1 SHEETS STA. TO STA.

F.A.I. RTE.	SECTION	COUNTY	TOTAL SHEETS	SHEET NO.
57	FAI 57 23 BP2	COOK	26	26
TC-18			CONTRACT NO. 62V24	
ILLINOIS FED. AID PROJECT				