

STATE OF ILLINOIS
DEPARTMENT OF TRANSPORTATION

F.A.I. RTE.	SECTION	COUNTY	TOTAL SHEETS	SHEET NO.
39	(50-5)SR, PP	LA SALLE	25	1
		ILLINOIS	CONTRACT NO. 66N75	

INDEX

- 1 COVER
- 2 GENERAL NOTES
- 3-5 SUMMARY OF QUANTITIES
- 6-8 TYPICAL SECTIONS
- 9-12 SCHEDULES
- 13-17 DETOUR SIGNING
- 18-19 RAMP DETAILS
- 20-24 PATCHING DETAILS
- 25 DETAILS

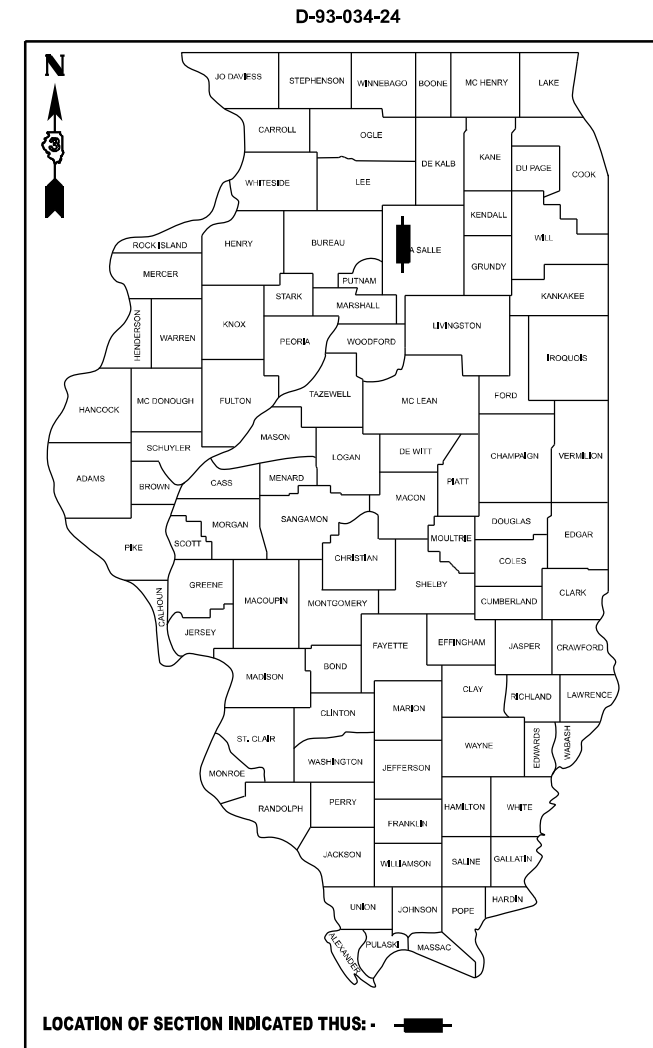
LIST OF ILLINOIS DOT HIGHWAY STANDARDS

000001-08	STANDARD SYMBOLS, ABBREVIATIONS AND PATTERNS
001001-02	AREAS OF REINFORCEMENT BARS
001006	DECIMAL OF AN INCH AND OF A FOOT
420001-10	PAVEMENT JOINTS
482006-03	HMA SHOULDER ADJACENT TO RIGID PAVEMENT
635001-02	DELINEATORS
701101-05	OFF-ROAD OPERATIONS, MULTILANE, 15' TO 24" FROM PAVEMENT EDGE
701106-02	OFF-ROAD OPERATIONS, MULTILANE, MORE THAN 15' AWAY
701428-01	TRAFFIC CONTROL, SETUP AND REMOVAL, FREEWAY/EXPRESSWAY
701451-05	RAMP CLOSURE FREEWAY/EXPRESSWAY
701901-09	TRAFFIC CONTROL DEVICES
780001-05	TYPICAL PAVEMENT MARKINGS
781001-04	TYPICAL APPLICATIONS RAISED REFLECTIVE PAVEMENT MARKERS

PROPOSED HIGHWAY PLANS

FAI 39 (I-39) SECTION (50-5)SR, PP PROJECT PATCHING AND SHOULDER RECONSTRUCTION LASALLE COUNTY

C-93-070-24



FUNCTIONAL CLASSIFICATION
RURAL - INTERSTATE
2020 RAMP ADT = 1350
P.V. = 70.2% S.U. = 5.4% M.U. = 24.4%

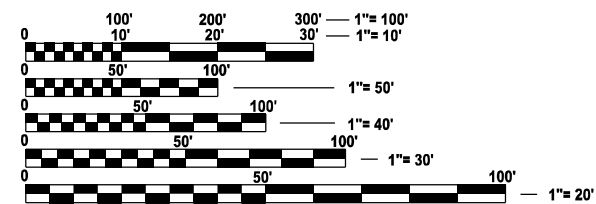
STATE OF ILLINOIS
DEPARTMENT OF TRANSPORTATION

SUBMITTED April 4, 2024

Trisha Thompson
REGIONAL ENGINEER

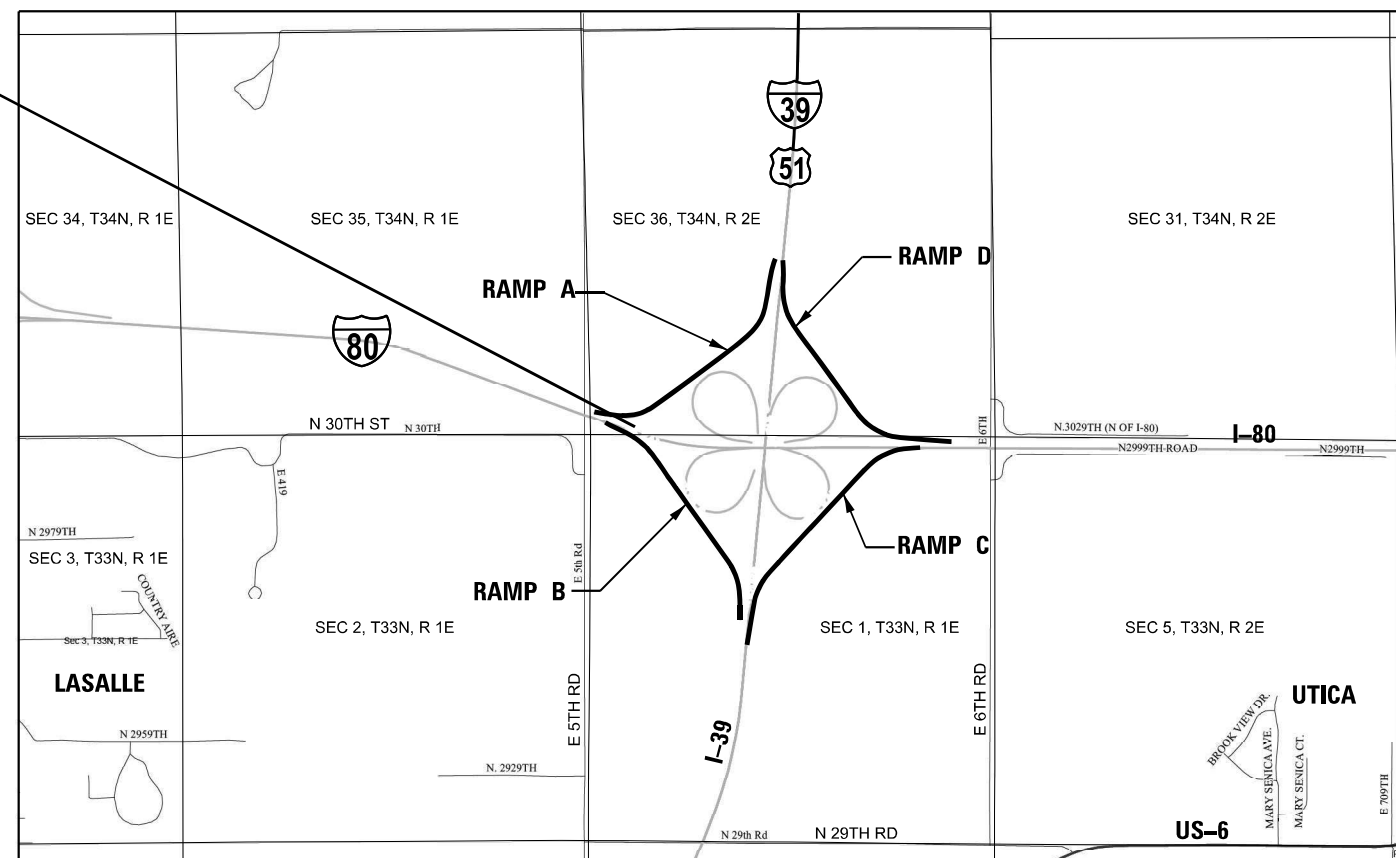
May 10, 2024
Scott A. Etk
ENGINEER OF DESIGN AND ENVIRONMENT

May 10, 2024
Stephen McAnis
DIRECTOR OF HIGHWAYS PROJECT IMPLEMENTATION



FULL SIZE PLANS HAVE BEEN PREPARED USING STANDARD ENGINEERING SCALES. REDUCED SIZED PLANS WILL NOT CONFORM TO STANDARD SCALES. IN MAKING MEASUREMENTS ON REDUCED PLANS, THE ABOVE SCALES MAY BE USED.

J.U.L.I.E.
JOINT UTILITY LOCATION INFORMATION FOR EXCAVATION
1-800-892-0123
OR 811



PROJECT ENGINEER : JOE KANNEL P.E.
UNIT CHIEF : STEPHENIE CARMIN

GROSS LENGTH = 18271 FT. = 3.46 MILE
NET LENGTH = 14678.4 FT. = 2.78 MILE

CONTRACT NO. 66N75

**PRINTED BY THE AUTHORITY
OF THE STATE OF ILLINOIS**

GENERAL NOTES

PLAN DIMENSIONS AND DETAILS RELATIVE TO EXISTING PLANS ARE SUBJECT TO NOMINAL CONSTRUCTION VARIATIONS. THE CONTRACTOR SHALL FIELD VERIFY EXISTING DIMENSIONS AND DETAILS AFFECTING NEW CONSTRUCTION AND MAKE NECESSARY APPROVED ADJUSTMENTS PRIOR TO CONSTRUCTION OR ORDERING OF MATERIALS. SUCH VARIATIONS SHALL NOT BE CAUSE FOR ADDITIONAL COMPENSATION FOR A CHANGE IN SCOPE OF WORK; HOWEVER, THE CONTRACTOR WILL BE PAID FOR THE QUANTITY ACTUALLY FURNISHED AT THE UNIT PRICE BID FOR THE WORK.

THE ENGINEER WILL BE THE SOLE JUDGE CONCERNING CURING TIME FOR THE VARIOUS HMA LIFTS.

ALL EXCAVATED MATERIAL, WHICH INCLUDES DIGGING OR GRADING OF ANY SOIL OR FILL MATERIAL, WITH THE EXCEPTION OF AGGREGATE FILLS, MUST BE INCORPORATED WITHIN THE IDOT RIGHT OF WAY DUE TO ENVIRONMENTAL DOCUMENTATION REQUIREMENTS.

ON EXISTING PAVEMENT WHICH MAY BE SUPERELEVATED, THE NEW HMA PAVEMENT SHALL BE BUILT WITH THE SAME SUPERELEVATION UNLESS NEW SUPERELEVATION RATES ARE GIVEN ON THE PLANS.

ALL ELEVATIONS REFERRING TO U.S.G.S. MEAN SEA LEVEL DATUM.

THE FOLLOWING RATES OF APPLICATION HAVE BEEN USED IN CALCULATING PLAN QUANTITIES:

HMA SHOULDERS	112	LES / SQ YD / IN
BITUMINOUS MATERIALS (TACK COAT) BETWEEN HMA LIFT APPLICATIONS	0.025	LES / SQ FT

THE CONTRACTOR SHALL CONTACT JULIE AT LEAST 48 HOURS PRIOR TO EXCAVATION TO DETERMINE WHICH UTILITIES ARE IN THE AREA.

THE CONTRACTOR'S ATTENTION IS DIRECTED TO THE PRESENCE OF DEPARTMENT-OWNED UNDERGROUND ELECTRICAL CABLE WITHIN THE LIMITS OF THE PROPOSED IMPROVEMENT. THE CONTRACTOR SHALL REQUEST THE ILLINOIS DEPARTMENT OF TRANSPORTATION IN OTTAWA (815-434-8417) TO LOCATE THE UNDERGROUND FACILITIES, PROVIDING A MINIMUM OF 72 HOURS NOTICE. THE DEPARTMENT IS NOT A MEMBER OF THE JOINT UTILITY LOCATING INFORMATION FOR EXCAVATORS (JULIE) SYSTEM.

ALL DAMAGE TO DEPARTMENT OWNED UNDERGROUND FACILITIES, CAUSED BY THE CONTRACTOR SHALL BE REPAIRED TO THE SATISFACTION OF THE ENGINEER AND AT NO EXPENSE TO THE DEPARTMENT. THIS SHALL INCLUDE ALL TEMPORARY REPAIRS REQUIRED TO KEEP THE FACILITY OPERATIONAL WHILE MATERIAL IS BEING OBTAINED TO MAKE PERMANENT REPAIRS. SPlicing OF ELECTRIC CABLE WILL NOT BE ALLOWED. ELECTRIC CABLE SHALL BE REPLACED FROM POLE TO POLE OR CONTROLLER.

COMMITMENTS

ANY/ALL EXCAVATED EARTHEN MATERIAL MUST REMAIN ON SITE. FOR THE SHOULDER RECONSTRUCTION ONLY THE NORTHWEST AND NORTHEAST INFIELDS CAN BE USED AT THE I-80 AND I-39 INTERCHANGE TO HOUSE THE EXCESS EARTHEN MATERIAL.

LOCATIONS:	ENTIRE PROJECT	ENTIRE PROJECT
MIXTURE USE(S):	HMA 10" SHOULDER BOTTOM LIFT(S)	HMA 10" SHOULDER BOTTOM LIFT (2")
BINDER GRADE (PG)	PG 64 22	PG 64 22
DESIGN AIR VOIDS:	4.0% N90	4.0% N90
MIXTURE COMPOSITION: (MIXTURE GRADATION)	IL 19.0	IL 9.5
FRICTION AGGREGATE:	NA	MIXTURE C
MIXTURE WEIGHT:	112.0 LB/SY/IN	112.0 LB/SY/IN
QUALITY MANAGEMENT PROGRAM:	QCQA	QCQA
SUBLOT SIZE:	NA	NA
DENSITY TEST METHOD:	CORES	CORES
MATERIAL TRANSFER DEVICE(REQUIRED):	NO	NO

STATE OF ILLINOIS
DEPARTMENT OF TRANSPORTATION
DISTRICT THREE
AS BUILT INFORMATION

STATE OF ILLINOIS
DEPARTMENT OF TRANSPORTATION
DISTRICT THREE

SUPERVISING CONSTRUCTION FIELD ENGINEER

PREPARED BY: _____
DISTRICT STUDIES & PLANS ENGINEER

RESIDENT ENGINEER / TECHNICIAN

DATE: _____

START & END DATES
OF CONSTRUCTION:

EXAMINED BY: _____
DISTRICT CONSTRUCTION ENGINEER

INSPECTORS: _____

DISTRICT MATERIALS ENGINEER

DISTRICT OPERATIONS ENGINEER

MODEL: Default
FILE NAME: p:\c\illinois\pw\hwy\hwy\hwy\DOT\0_ces\District 3\ORD Projects\66N75\CAD\Drawn\CAD Sheets\66N75 - cover.dgn

USER NAME = Earl.Peterson	DESIGNED - RW	REVISED -
	DRAWN - RW	REVISED -
PLOT SCALE = \$SCALEs	CHECKED - ECP	REVISED -
PLOT DATE = 3/28/2024	DATE - 2/9/2024	REVISED -

**STATE OF ILLINOIS
DEPARTMENT OF TRANSPORTATION**

GENERAL NOTES

F.A.I. RTE.	SECTION	COUNTY	TOTAL SHEETS	SHEET NO.
39	(50-5)SR, PP	LASALLE	25	2
				CONTRACT NO. 66N75
ILLINOIS FED. AID PROJECT				

SCALE: SHEET 1 OF 1 SHEETS STA. TO STA.

MODEL: Default
 FILE NAME: c:\p\work\p\w\ed\petersmccad0891475D\66N75 - cover.dgn

CONSTR. CODE
 100% STATE

CODE NO.	ITEM	UNIT	TOTAL QUANTITY	ROADWAY	
				0006	RURAL
20200600	EXCAVATING AND GRADING EXISTING SHOULDER	UNIT	231	231	
25000210	SEEDING, CLASS 2A	ACRE	2.5	2.5	
25000400	NITROGEN FERTILIZER NUTRIENT	POUND	239	239	
25000500	PHOSPHORUS FERTILIZER NUTRIENT	POUND	239	239	
25000600	POTASSIUM FERTILIZER NUTRIENT	POUND	239	239	
25100115	MULCH, METHOD 2	ACRE	2.5	2.5	
40800029	BITUMINOUS MATERIALS (TACK COAT)	POUND	45703	45703	
42000060	WELDED WIRE REINFORCEMENT	SQ YD	951	951	
44004250	PAVED SHOULDER REMOVAL	SQ YD	12997	12997	
44200553	CLASS A PATCHES, TYPE II, 10 INCH	SQ YD	36	36	
44200557	CLASS A PATCHES, TYPE III, 10 INCH	SQ YD	42	42	
44200559	CLASS A PATCHES, TYPE IV, 10 INCH	SQ YD	126	126	
44200970	CLASS B PATCHES, TYPE II, 10 INCH	SQ YD	1006	1006	
44200974	CLASS B PATCHES, TYPE III, 10 INCH	SQ YD	318	318	

USER NAME = Earl.Peterson	DESIGNED - ECP	REVISED -
	DRAWN - ECP	REVISED -
PLOT SCALE = \$SCALE\$	CHECKED - BM	REVISED -
PLOT DATE = 3/28/2024	DATE - 2/9/2024	REVISED -

STATE OF ILLINOIS
 DEPARTMENT OF TRANSPORTATION

SUMMARY OF QUANTITIES

SCALE: SHEET 1 OF 3 SHEETS STA. TO STA.

F.A.I. RTE.	SECTION	COUNTY	TOTAL SHEETS	SHEET NO.
39	(50-5)SR, PP	LASALLE	25	3
CONTRACT NO. 66N75				
ILLINOIS FED. AID PROJECT				

MODEL: Default
 FILE NAME: c:\p\work\p\work\petersmccad0891475\0366N75 - cover.dgn

USER NAME = Earl.Peterson	DESIGNED - ECP	REVISED -
	DRAWN - ECP	REVISED -
PLOT SCALE = \$\$SCALE\$	CHECKED - BM	REVISED -
PLOT DATE = 3/28/2024	DATE - 2/9/2024	REVISED -

**STATE OF ILLINOIS
 DEPARTMENT OF TRANSPORTATION**

SUMMARY OF QUANTITIES

SCALE: SHEET 2 OF 3 SHEETS STA. TO STA.

F.A.I. RTE.	SECTION	COUNTY	TOTAL SHEETS	SHEET NO.
39	(50-5)SR, PP	LASALLE	25	4
CONTRACT NO. 66N75				
ILLINOIS FED. AID PROJECT				

CODE NO.	ITEM	UNIT	TOTAL QUANTITY	CONSTR. CODE	
				100% STATE	
				ROADWAY 0006	RURAL
44200976	CLASS B PATCHES, TYPE IV, 10 INCH	SQ YD	633	633	
44201299	DOWEL BARS 1 1/2"	EACH	3276	3276	
44213000	PATCHING REINFORCEMENT	SQ YD	204	204	
44213200	SAW CUTS	FOOT	8333	8333	
44213202	TIE BARS 1"	EACH	285	285	
48203037	HOT-MIX ASPHALT SHOULDERS, 10"	SQ YD	15481	15481	
63500105	DELINEATORS	EACH	224	224	
67100100	MOBILIZATION	L SUM	1	1	
70100820	TRAFFIC CONTROL AND PROTECTION, STANDARD 701451	L SUM	1	1	
70103815	TRAFFIC CONTROL SURVEILLANCE	CAL DA	10	10	
70107025	CHANGEABLE MESSAGE SIGN	CAL DA	240	240	
* 78009004	MODIFIED URETHANE PAVEMENT MARKING - LINE 4"	FOOT	2446	2446	
* 78009008	MODIFIED URETHANE PAVEMENT MARKING - LINE 8"	FOOT	198	198	
* 78100100	RAISED REFLECTIVE PAVEMENT MARKER	EACH	145	145	

*= SPECIALTY ITEM

CODE NO.	ITEM	UNIT	TOTAL QUANTITY	CONSTR. CODE	
				100% STATE	
				ROADWAY	RURAL
				0006	
78300200	RAISED REFLECTIVE PAVEMENT MARKER REMOVAL	EACH	145		145
X6350120	DELINEATOR REMOVAL	EACH	128		128
Z0016702	DETOUR SIGNING	L SUM	1		1

MODEL: Default
 FILE NAME: c:\p\work\pwt\petersmcc\0891475\0866N75 - cover.dgn

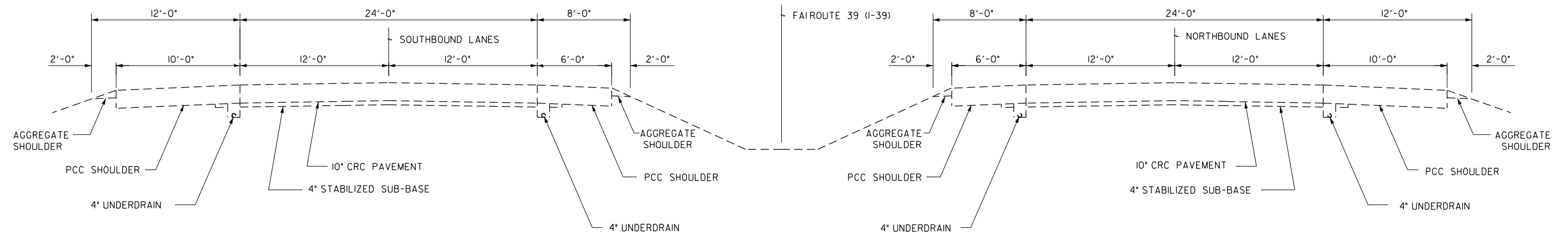
USER NAME = Earl.Peterson	DESIGNED - ECP	REVISED -
	DRAWN - ECP	REVISED -
PLOT SCALE = \$\$SCALE\$	CHECKED - BM	REVISED -
PLOT DATE = 3/28/2024	DATE - 2/9/2024	REVISED -

**STATE OF ILLINOIS
DEPARTMENT OF TRANSPORTATION**

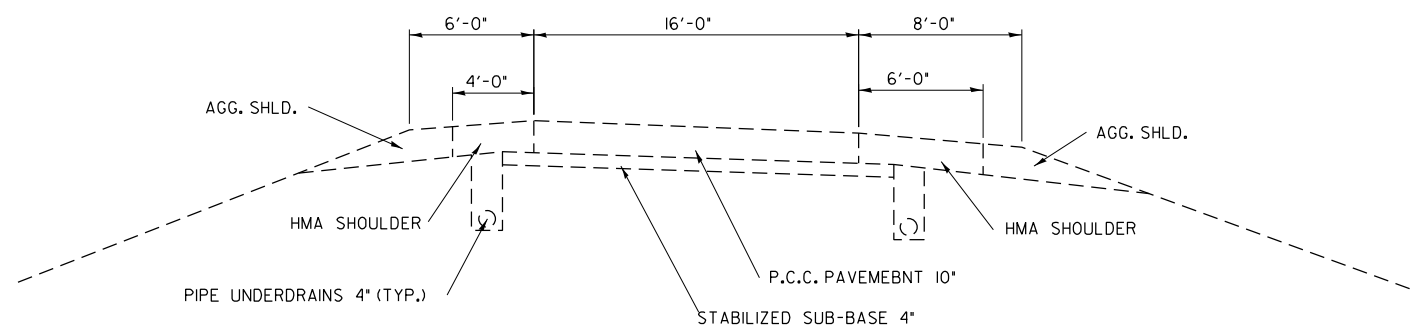
SUMMARY OF QUANTITIES

SCALE: SHEET 3 OF 3 SHEETS STA. TO STA.

F.A.I. RTE.	SECTION	COUNTY	TOTAL SHEETS	SHEET NO.
39	(50-5)SR, PP	LASALLE	25	5
CONTRACT NO. 66N75				
ILLINOIS FED. AID PROJECT				

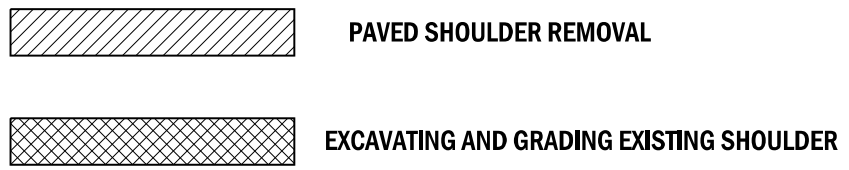
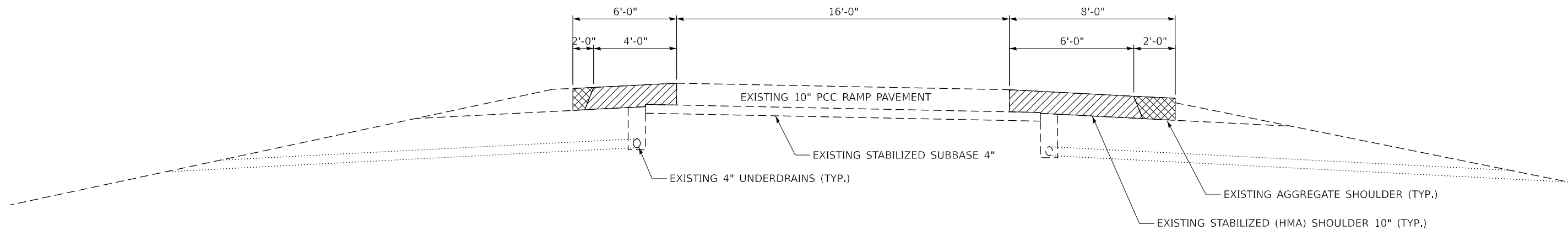


TYPICAL SECTION
FAI ROUTE 39 (I-39) – MAINLINE

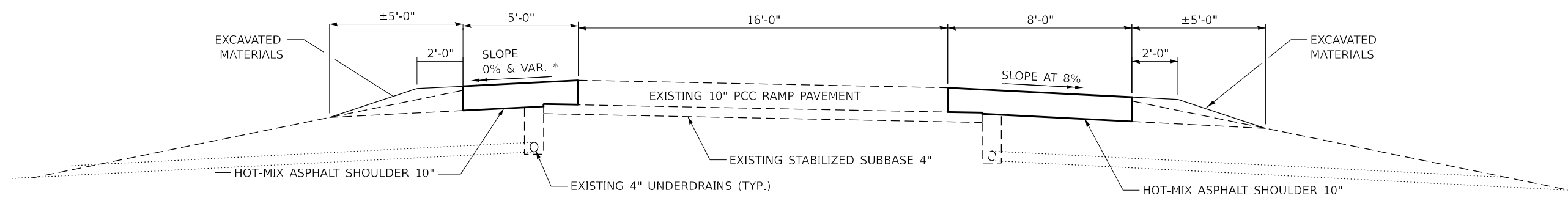


TYPICAL SECTION
FAI ROUTE 39/80 INTERCHANGE – RAMPS A, B, C, D

FILE NAME =	USER NAME = Earl.Peterson	DESIGNED - RW	REVISED -	STATE OF ILLINOIS DEPARTMENT OF TRANSPORTATION	TYPICAL SECTIONS			F.A.I. RTE.	SECTION	COUNTY	TOTAL SHEETS	SHEET NO.
p:\11dot-pw.bentley.com\PWIDOT\Documents\IDOT Offices\District 3\ORD Projects\03667\Drawings\CAD\Sheets\0366N75 - cover.dgn	DRAWN BY CAD	CHECKED - ECP	REVISED -					39	(50-5)SR, PP	LASALLE	25	6
PLOT SCALE = #SCALE#	DATE - 2/9/2024	CONTRACT NO. 66N75	ILLINOIS		SCALE:		SHEET NO. 1 OF 2 SHEETS	STA.	TO STA.			
PLOT DATE = 3/27/2024												



EXISTING TYPICAL SECTION
I-39/I-80 INTERCHANGE
OUTER RAMPS A,B,C,D



* ABSOLUTE GRADE BETWEEN RAMP AND INSIDE SHOULDER SHALL NOT EXCEED 8%

SUPERELEVATION RATES AND STATIONS ARE ON THE INFORMATION ONLY PAGE NUMBERS 18 & 19

PROPOSED TYPICAL SECTION
I-39/I-80 INTERCHANGE
OUTER RAMPS A,B,C,D

- RAMP A = SB I-39 TO WB I-80**
- RAMP B = EB I-80 TO SB I-39**
- RAMP C = NB I-39 TO EB I-80**
- RAMP D = WB I-80 TO NB I-39**

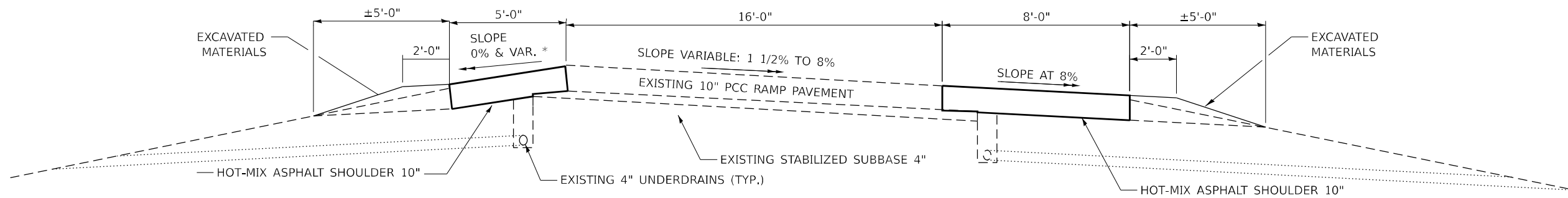
MODEL: Default
 FILE NAME: p:\idirect\aw_bentley.com\p\indirect\Documents\DOT 0_ces\District_3\ORR\Project\366N75\CADD\366N75\CAD\Sheet\366N75 - cover.dgn

USER NAME = stephenlecarmin	DESIGNED - RW	REVISED -
	DRAWN - RW	REVISED -
PLOT SCALE = \$SCALE\$	CHECKED - ECP	REVISED -
PLOT DATE = 4/3/2024	DATE - 2/9/2024	REVISED -

STATE OF ILLINOIS
DEPARTMENT OF TRANSPORTATION

TYPICAL SECTIONS			
SCALE:	SHEET 2 OF 3 SHEETS	STA.	TO STA.

F.A.I. RTE. 39	SECTION (50-5)SR, PP	COUNTY LASALLE	TOTAL SHEETS 25	SHEET NO. 7
			CONTRACT NO. 66N75	
ILLINOIS FED. AID PROJECT				



* ABSOLUTE GRADE BETWEEN RAMP AND INSIDE SHOULDER SHALL NOT EXCEED 8%

PROPOSED TYPICAL SECTION
I-39/I-80 INTERCHANGE
SUPERELEVATED OUTER RAMPS A,B,C,D

MODEL: Default
 FILE NAME: c:\p\work\pww\illinois\carminsa\0891475\0368675 - cover.dgn

USER NAME = Earl.Peterson	DESIGNED - ECP	REVISED -
	DRAWN - ECP	REVISED -
PLOT SCALE = \$SCALE\$	CHECKED - BM	REVISED -
PLOT DATE = 3/28/2024	DATE - 2/9/2024	REVISED -

STATE OF ILLINOIS
DEPARTMENT OF TRANSPORTATION

TYPICAL SECTION

SCALE: SHEET 3 OF 3 SHEETS STA. TO STA.

F.A.I. RTE.	SECTION	COUNTY	TOTAL SHEETS	SHEET NO.
39	(50-5)SR, PP	LASALLE	25	8
CONTRACT NO. 66N75				
ILLINOIS FED. AID PROJECT				

FINAL SURVEY	SURVEYED	DATE
NOTE BOOK	PLOTTED	
NO.	TEMPLATE	
	AREAS CHECKED	
	AREAS CHECKED	

ORIGINAL SURVEY	SURVEYED	DATE
NOTE BOOK	PLOTTED	
NO.	TEMPLATE	
	AREAS CHECKED	
	AREAS CHECKED	

MODEL: Default
FILE NAME: c:\pwwork\jwiedel\petersmcc\087475\0368NTS-cover.dgn

RAMP A PATCHING SCHEDULE								
LOCATION	PATCH LENGTH	PATCH WIDTH	CLASS B PATCHING			DOWEL	SAW	WELDED
			TYPE II	TYPE III	TYPE IV	BARS	CUTS	WIRE
			10"			1 1/2"		
STATION	FOOT	FOOT	SQ YD	SQ YD	SQ YD	EACH	FOOT	SQ YD
103+25	6	16	11			28	60	
104+17	6	16	11			28	60	
105+50	6	16	11			28	60	
106+25	6	16	11			28	60	
108+45	6	16	11			28	60	
108+90	8	16	14			28	64	
109+33	6	16	11			28	60	
110+25	6	16	11			28	60	
111+02	6	16	11			28	60	
112+85	15	16			27	28	78	27
113+44	6	16	11			28	60	
113+96	6	16	11			28	60	
114+33	6	16	11			28	60	
115+70	6	16	11			28	60	
115+90	6	16	11			28	60	
116+10	6	16	11			28	60	
116+62	6	16	11			28	60	
117+74	6	16	11			28	60	
118+41	6	16	11			28	60	
119+15	6	16	11			28	60	
119+68	6	16	11			28	60	
120+20	8	16	14			28	64	
121+00	6	16	11			28	60	
121+62	8	16	14			28	64	
122+40	6	16	11			28	60	
122+65	6	16	11			20	60	
123+21	6	16	11			28	60	
123+68	6	16	11			28	60	
124+21	6	16	11			28	60	
125+20	6	16	11			28	60	
126+47	10	16		18		28	68	18
127+03	6	16	11			28	60	
127+26	6	16	11			28	60	
128+15	6	16	11			28	60	
128+60	12	16		21		28	72	21
128+80	6	16	11			28	60	
129+56	20	16			36	28	88	36
129+89	10	16		18		28	68	18
130+48	6	16	11			28	60	
131+24	6	16	11			28	60	
131+70	10	16		18		28	68	18
132+15	8	16	14			28	64	
133+14	6	16	11			28	60	
134+51	6	16	11			28	60	
135+00	6	16	11			28	60	
TOTAL			441	75	63	1260	2798	138

USER NAME = Earl.Peterson	DESIGNED - ECP	REVISED -
	DRAWN - ECP	REVISED -
PLOT SCALE = \$SCALE\$	CHECKED - BM	REVISED -
PLOT DATE = 3/28/2024	DATE - 2/9/2024	REVISED -

STATE OF ILLINOIS
DEPARTMENT OF TRANSPORTATION

SCHEDULES

SCALE: SHEET 1 OF 4 SHEETS STA. TO STA.

F.A.I. RTE.	SECTION	COUNTY	TOTAL SHEETS	SHEET NO.
39	(50-5)SR, PP	LASALLE	25	9
CONTRACT NO. 66N75				
ILLINOIS FED. AID PROJECT				

DATE	BY
SURVEYED	PLOTTED
TEMPLATE	AREAS CHECKED
NO.	

DATE	BY
SURVEYED	PLOTTED
TEMPLATE	AREAS CHECKED
NO.	

MODEL: Default
FILE NAME: c:\pwworking\jwd\peterson\eccd\087475\0368\NTS-cover.dgn

RAMP D PATCHING SCHEDULE											
LOCATION	PATCH LENGTH	PATCH WIDTH	CLASS A PATCHES	CLASS B PATCHES			DOWEL	SAW	WELDED	PATCH	TIE
			TYPE II	TYPE II	TYPE III	TYPE IV	BARS	CUTS	WIRE	REIN	BARS
STATION	FOOT	FOOT	10" INCH				1 1/2"				1"
			SQ YD	SQ YD	SQ YD	SQ YD	EACH	FOOT	SQ YD	SQ YD	EACH
256+75	6	16		11			28	60			
257+12	6	16		11			28	60			
257+52	6	16		11			28	60			
258+30	8	16		14			28	64			
258+52	12	16			21		28	72	21		
259+26	12	16			21		28	72	21		
259+51	6	16		11			28	60			
260+47	24	16				43	28	96	43		
260+82	53	16				94	28	154	94		
261+35	12	16			21		28	72	21		
261+84	6	16		11			28	60			
262+13	6	16		11			28	60			
262+46	6	16		11			28	60			
263+08	6	16		11			28	60			
263+45	6	16		11			28	60			
263+89	6	16		11			28	60			
264+60	6	16		11			28	60			
264+95	6	16		11			28	60			
265+85	6	16		11			28	60			
266+09	6	16		11			28	60			
266+62	6	16		11			28	60			
267+25	6	16		11			28	60			
267+42	12	16			21		28	72	21		
267+93	6	16		11			28	60			
268+50	6	16		11			28	60			
268+85	6	16		11			28	60			
269+23	15	16				27	28	78	27		
269+57	6	16		11			28	60			
270+01	6	16		11			28	60			
270+58	6	16		11			28	60			
271+07	6	16		11			28	60			
272+36	6	16		11			28	60			
276+40	6	16		11			28	60			
277+10	12	16			21		28	72	21		
277+35	10	16			18		28	68	18		
277+69	15	16				27	28	78	27		
279+40	70	16				124	28	188	124		
280+25	8	16		14			28	64			
281+75	6	16		11			28	60			
282+50	29	16				52	28	106	52		
283+50	31	16				55	28	110	55		
284+95	6	16		11			28	60			
286+50	50	16				89	28	148	89		
291+10	8	16	14					48		14	30
TOTAL			14	325	123	511	1204	3182	634	14	30

USER NAME = Earl.Peterson	DESIGNED - ECP	REVISED -
PLOT SCALE = \$SCALE\$	DRAWN - ECP	REVISED -
PLOT DATE = 3/28/2024	CHECKED - BM	REVISED -
	DATE - 2/9/2024	REVISED -

**STATE OF ILLINOIS
DEPARTMENT OF TRANSPORTATION**

SCHEDULES			
SCALE:	SHEET 2	OF 4	SHEETS
STA.		TO STA.	

F.A.I. RTE.	SECTION	COUNTY	TOTAL SHEETS	SHEET NO.
39	(50-5)SR, PP	LASALLE	25	10
CONTRACT NO. 66N75				
ILLINOIS FED. AID PROJECT				

DATE	BY	SURVEYED	PLOTTED	TEMPLATE	AREAS CHECKED
FINAL SURVEY NOTE BOOK NO.					

DATE	BY	SURVEYED	PLOTTED	TEMPLATE	AREAS CHECKED
ORIGINAL SURVEY NOTE BOOK NO.					

MODEL: Default
FILE NAME: c:\pwworking\jwd\jdpeters\mcc\087475\0868NFS-cover.dgn

RAMP B PATCHING SCHEDULE												
LOCATION	PATCH LENGTH	PATCH WIDTH	CLASS A PATCHES		CLASS B PATCHES			DOWEL	SAW	WELDED	PATCH	TIE
			TYPE III	TYPE IV	TYPE II	TYPE III	TYPE IV	BARS	CUTS	WIRE	REIN	BARS
STATION	FOOT	FOOT	SQ YD	SQ YD	SQ YD	SQ YD	SQ YD	1 1/2"	FOOT	SQ YD	SQ YD	1"
153+75	15	16		27					62		27	30
156+33	10	16					18	28	68	18		
161+24	6	16			11			28	60			
163+85	6	16			11			28	60			
164+68	12	16					21	28	72	21		
168+16	6	16			11			28	60			
172+65	12	16					21	28	72	21		
173+20	6	16			11			28	60			
176+90	6	16			11			28	60			
178+64	6	16			11			28	60			
180+75	12	16					21	28	72	21		
184+27	6	16			11			28	60			
186+00	12	16	21						56		21	30
191+20	40	7.5		33					95		33	34
TOTAL			21	60	77	81	0	308	917	81	81	94

RAMP C PATCHING SCHEDULE													
LOCATION	PATCH LENGTH	PATCH WIDTH	CLASS A PATCHES			CLASS B PATCHES			DOWEL	SAW	WELDED	PATCH	TIE
			TYPE II	TYPE III	TYPE IV	TYPE II	TYPE III	TYPE IV	BARS	CUTS	WIRE	REIN	BARS
STATION	FOOT	FOOT	10 INCH						1 1/2"	FOOT	SQ YD	SQ YD	1"
STATION	FOOT	FOOT	SQ YD	SQ YD	SQ YD	SQ YD	SQ YD	SQ YD	EACH	FOOT	SQ YD	SQ YD	EACH
203+45	15	16			27					62		27	30
204+15	12	16		21						56		21	30
204+70	22	16			39					76		39	41
205+00	6	16	11							44		11	30
207+17	6	16	11							44		11	30
209+88	6	16				11			28	60			
211+43	6	16				11			28	60			
218+19	8	16				14			28	64			
219+54	6	16				11			28	60			
220+72	6	16				11			28	60			
222+26	18	16						32	28	84	32		
222+79	6	16				11			28	60			
223+68	6	16				11			28	60			
223+91	6	16				11			28	60			
224+65	8	16				14			28	64			
225+27	6	16				11			28	60			
225+74	15	16						27	28	78	27		
227+38	6	16				11			28	60			
229+44	6	16				11			28	60			
231+80	6	16				11			28	60			
233+16	8	16				14			28	64			
234+35	12	16						21	28	72	21		
235+90	10	16						18	28	68	18		
TOTAL			22	21	66	163	39	59	504	1436	98	109	161

USER NAME = Earl.Peterson	DESIGNED - ECP	REVISED -
PLOT SCALE = \$SCALE\$	CHECKED - BM	REVISED -
PLOT DATE = 3/28/2024	DATE - 2/9/2024	REVISED -

STATE OF ILLINOIS
DEPARTMENT OF TRANSPORTATION

SCHEDULES

SCALE: SHEET 3 OF 4 SHEETS STA. TO STA.

F.A.I. RTE.	SECTION	COUNTY	TOTAL SHEETS	SHEET NO.
39	(50-5)SR, PP	LASALLE	25	11
CONTRACT NO. 66N75				
ILLINOIS FED. AID PROJECT				

DATE	
BY	
SURVEYED	
PLOTTED	
TEMPLATE	
AREAS	
CHECKED	
AREAS	
CHECKED	
FINAL SURVEY	
NOTE BOOK	
NO.	

DATE	
BY	
SURVEYED	
PLOTTED	
TEMPLATE	
AREAS	
CHECKED	
AREAS	
CHECKED	
ORIGINAL SURVEY	
NOTE BOOK	
NO.	

MODEL: Default
FILE NAME: c:\pwwork\jwtd\jpeterson\ecd\087475\0868NTS-cover.dgn

HMA SHOULDERS SCHEDULE														
LOCATION				LENGTH	EXCAVATE & GRADE		PAVED		HMA		BITUMINOUS			
					EXISTING SHOULDER		SHOULDER REMOVAL		SHOULDERS 10"		MATERIALS (TACK COAT)			
STATION				FOOT	UNIT		SQ YD		SQ YD		POUND			
					INSIDE	OUTSIDE	INSIDE	OUTSIDE	INSIDE	OUTSIDE	INSIDE	OUTSIDE		
RAMP A														
STA.	100+55	TO	STA.	127+82	2727.50		27		1818		2424		6546	
STA.	101+00	TO	STA.	127+74	2674.00	27		1188		1486		4011		
RAMP B														
STA.	157+40	TO	STA.	185+52	2812.00		28		1875		2500		6749	
STA.	157+40	TO	STA.	184+08	2668.00	27		1186		1482		4002		
RAMP C														
STA.	200+45	TO	STA.	236+30	3585.00		36		2390		3187		8604	
STA.	206+30	TO	STA.	235+71	2941.00	29		1307		1634		4412		
RAMP D														
STA.	256+80	TO	STA.	287+95	3115.00		31		2077		2769		7476	
STA.	256+80	TO	STA.	282+82	2602.00	26		1156		1446		3903		
SUBTOTAL						109	122	4838	8160	6047	10880	16328	29375	
TOTAL							231	12997		16927		45702		

PAVEMENT MARKING SCHEDULE						
LOCATION	RAISED REFLECTIVE PAVEMENT MARKER REMOVAL	RAISED REFLECTIVE PAVEMENT MARKER	MODIFIED URETHANE PAVEMENT MARKING TYPE 1 LINE 4"		MODIFIED URETHANE PAVEMENT MARKING TYPE 1 LINE 8"	
			FOOT		FOOT	
			YELLOW	WHITE	YELLOW	WHITE
RAMP A	50	50	319	319		42
RAMP B	20	20	155	155		36
RAMP C	25	25	206	206		78
RAMP D	50	50	543	543		42
SUBTOTAL			1223	1223		198
TOTAL			145	145	2446	198

LANDSCAPING SCHEDULE																
LOCATION				LENGTH	SEEDING CLASS 2A		NITROGEN FERTILIZER NUTRIENT		PHOSPHOROUS FERTILIZER NUTRIENT		POTASSIUM FERTILIZER NUTRIENT		MULCH METHOD 2			
					FOOT		ACRE		POUND		POUND		POUND		ACRE	
STATION					INSIDE	OUTSIDE	INSIDE	OUTSIDE	INSIDE	OUTSIDE	INSIDE	OUTSIDE	INSIDE	OUTSIDE		
RAMP A																
STA.	100+55	TO	STA.	127+82	2727.00		0.31		28		28		28		0.31	
STA.	101+00	TO	STA.	127+74	2674.00	0.31		28		28		28		0.31		
RAMP B																
STA.	157+40	TO	STA.	185+52	2812.00		0.32		29		29		29		0.32	
STA.	157+40	TO	STA.	184+08	2668.00	0.31		28		28		28		0.31		
RAMP C																
STA.	200+45	TO	STA.	236+30	3585.00		0.41		37		37		37		0.41	
STA.	206+30	TO	STA.	235+71	2941.00	0.34		30		30		30		0.34		
RAMP D																
STA.	256+80	TO	STA.	287+95	3115.00		0.36		32		32		32		0.36	
STA.	256+80	TO	STA.	282+82	2602.00	0.30		27		27		27		0.30		
SUBTOTAL						1.25	1.40	112	126	112	126	112	126	1.25	1.40	
TOTAL							2.50		239		239		239		2.50	

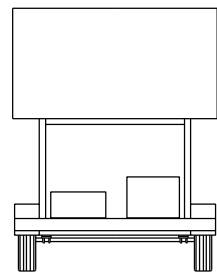
DELINEATOR SCHEDULE				
LOCATION	DELINEATOR REMOVAL	DELINEATORS		
		EACH		
			INSIDE	OUTSIDE
RAMP A	32	25	37	
RAMP B	32	16	35	
RAMP C	32	19	34	
RAMP D	32	21	37	
SUBTOTAL		81	143	
TOTAL		128	224	

USER NAME = Earl.Peterson	DESIGNED - ECP	REVISED -
	DRAWN - ECP	REVISED -
PLOT SCALE = \$SCALE\$	CHECKED - BM	REVISED -
PLOT DATE = 3/28/2024	DATE - 2/9/2024	REVISED -

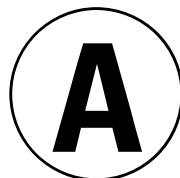
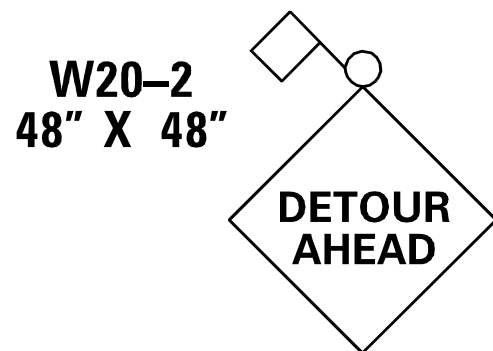
STATE OF ILLINOIS
DEPARTMENT OF TRANSPORTATION

SCHEDULES			
SCALE:	SHEET 4	OF 4	SHEETS
STA.		TO STA.	

F.A.I. RTE.	SECTION	COUNTY	TOTAL SHEETS	SHEET NO.
39	(50-5)SR, PP	LASALLE	25	12
CONTRACT NO. 66N75				
ILLINOIS FED. AID PROJECT				

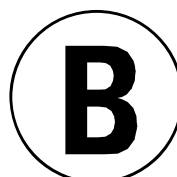


CHANGEABLE MESSAGE SIGN
MESSAGE TO READ AS FOLLOWS:
"EXIT RAMP CLOSED AHEAD
FOLLOW DETOUR"
1 SIGN
REQUIRED



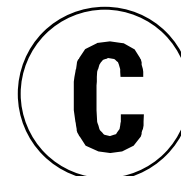
1 SIGN
REQUIRED

M4-8(0)
30" X 15"



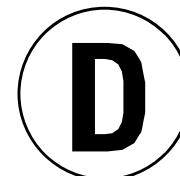
7 SIGNS
REQUIRED

M3-1
30 X 15"



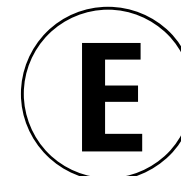
7 SIGNS
REQUIRED

M3-2
30 X 15"



7 SIGNS
REQUIRED

M3-3
30 X 15"



7 SIGNS
REQUIRED

M3-4
30 X 15"



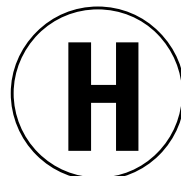
7 SIGNS
REQUIRED

E5-2a
40" X 36"



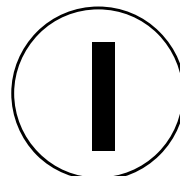
1 SIGN
REQUIRED

M1-1
36" X 36"



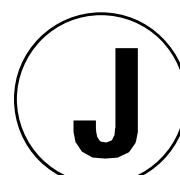
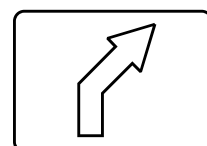
7 SIGNS
REQUIRED

M1-1
36" X 36"



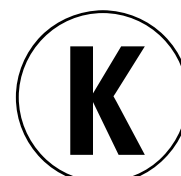
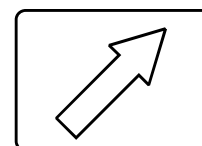
7 SIGNS
REQUIRED

M5-2(0)
30" X 15"



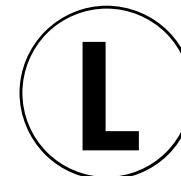
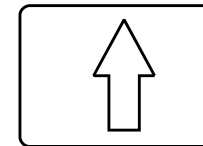
1 SIGN
REQUIRED

M6-2(0)
30" X 15"



5 SIGNS
REQUIRED

M6-3(0)
30" X 15"



1 SIGNS
REQUIRED

M4-8a(0)
30" X 15"



1 SIGN
REQUIRED

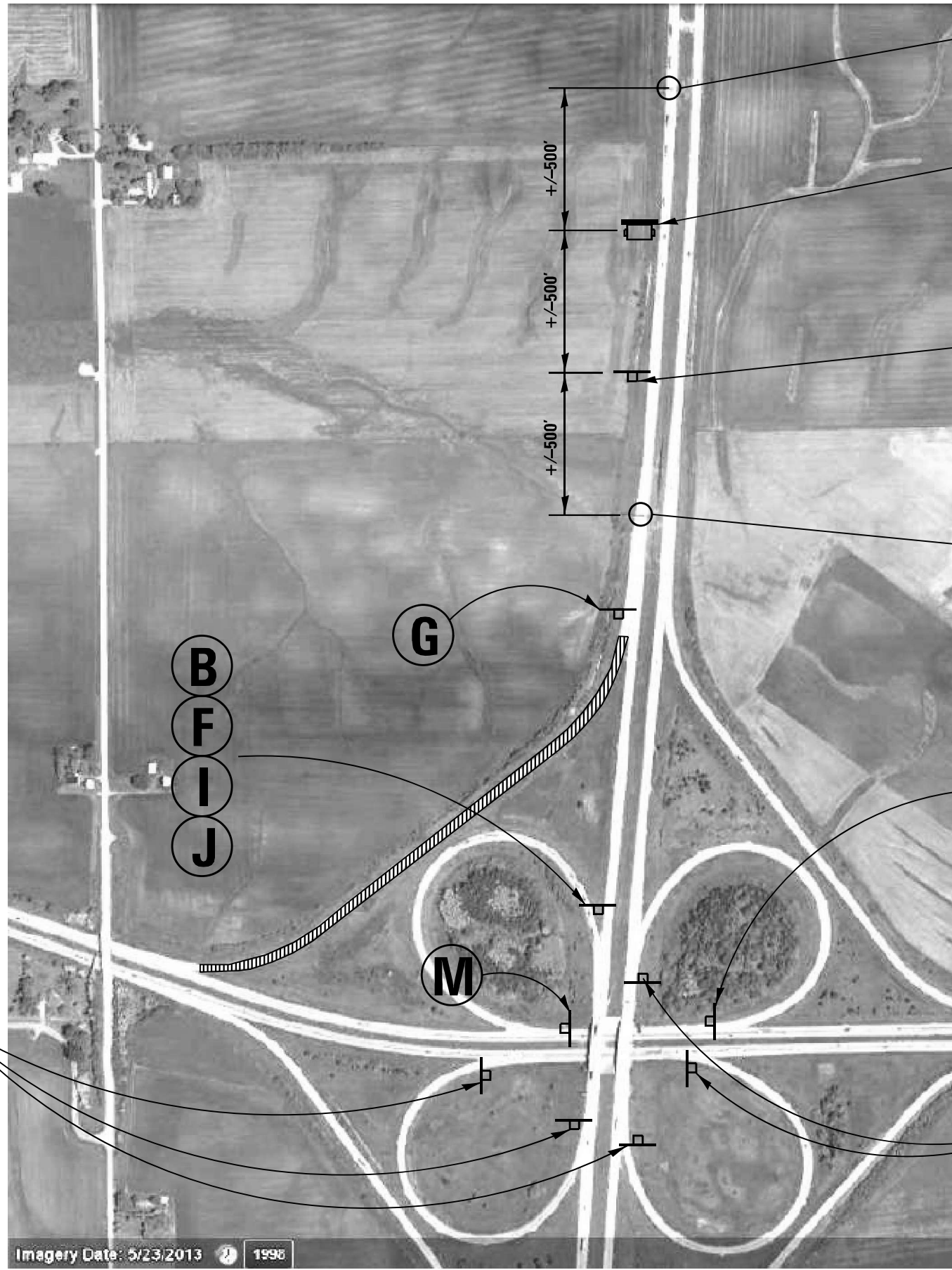
FILE NAME =	USER NAME = Earl.Peterson	DESIGNED - RW	REVISED -
p:\1\dot-pw.bentley.com\PWIDOT\Documents\IDOT Offices\District 3\ORD Projects\03667\DRAWING\CAD\shelw\0366N75 - cover.dgn		CHECKED - ECP	REVISED -
		DATE - 2/6/2024	REVISED -

STATE OF ILLINOIS
DEPARTMENT OF TRANSPORTATION

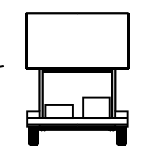
DETOUR SIGNING
SIGN LEGEND

SCALE: SHEET NO. 1 OF 5 SHEETS STA. TO STA.

F.A.I. RTE.	SECTION	COUNTY	TOTAL SHEETS	SHEET NO.
39	(50-5)SR, PP	LASALLE	25	13
ILLINOIS			CONTRACT NO. 66N75	



EXISTING OVD
SIGN TRUSS



+/-500'

+/-500'

+/-500'

A

NOTES:
HATCHED AREA REPRESENTS CLOSED RAMP

RAMP SHALL BE CLOSED ACCORDING TO
TRAFFIC CONTROL & PROTECTION STANDARD 701451

EXISTING OVD
SIGN TRUSS

G

B

F

I

J

B

F

I

L

B

F

I

K

M

B

F

I

K

Imagery Date: 5/23/2013 1998

FILE NAME =	USER NAME = Earl.Peterson	DESIGNED - RW	REVISED -	STATE OF ILLINOIS DEPARTMENT OF TRANSPORTATION	DETOUR SIGNING FOR NORTHWEST RAMP CLOSURE			F.A.I. RTE.	SECTION	COUNTY	TOTAL SHEETS	SHEET NO.	
pw:/i1dot-pw.bentley.com/PWIDOT/Documents/IDOT Offices/District 3/ORD Projects/D3667/DRAWING/CADsh/RW/D366N75 - cover.dgn		CHECKED - ECP	REVISED -		SCALE:	SHEET NO. 2 OF 5 SHEETS	STA.	TO STA.	39	(50-5)SR, PP	LASALLE	25	14
PLOT SCALE = #SCALE#		DATE - 2/6/2024	REVISED -					CONTRACT NO. 66N75					
PLOT DATE = 3/27/2024			REVISED -					ILLINOIS					



NOTES:
 HATCHED AREA REPRESENTS CLOSED RAMP
 RAMP SHALL BE CLOSED ACCORDING TO
 TRAFFIC CONTROL & PROTECTION STANDARD 701451



FILE NAME =	USER NAME = Earl.Peterson	DESIGNED - RW	REVISED -
pw:/idot-pw.bentley.com/PWIDOT/Documents/IDOT Offices/District 3/ORD Projects/D3667/DRAWING/CAD/Sheets/D366N75 - cover.dwg		CHECKED - ECP	REVISED -
		DATE - 2/6/2024	REVISED -

STATE OF ILLINOIS
 DEPARTMENT OF TRANSPORTATION

DETOUR SIGNING FOR
 SOUTHWEST RAMP CLOSURE

SCALE: SHEET NO. 3 OF 5 SHEETS STA. TO STA.

F.A.I. RTE.	SECTION	COUNTY	TOTAL SHEETS	SHEET NO.
39	(50-5)SR, PP	LASALLE	25	15
ILLINOIS			CONTRACT NO. 66N75	



B
D
I
K

B
D
I
K

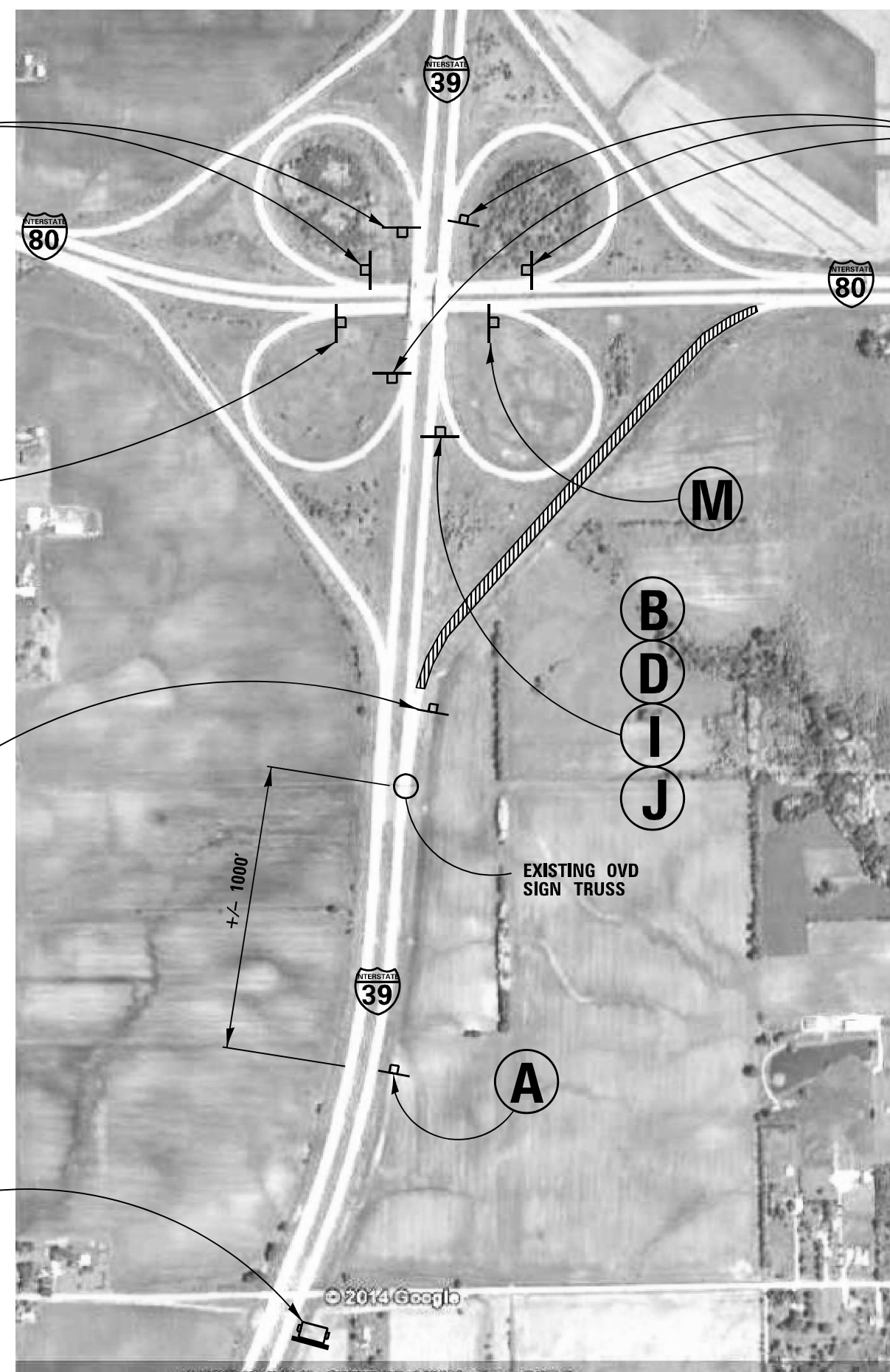
B
D
I
L

B
D
I
J

G

M

A



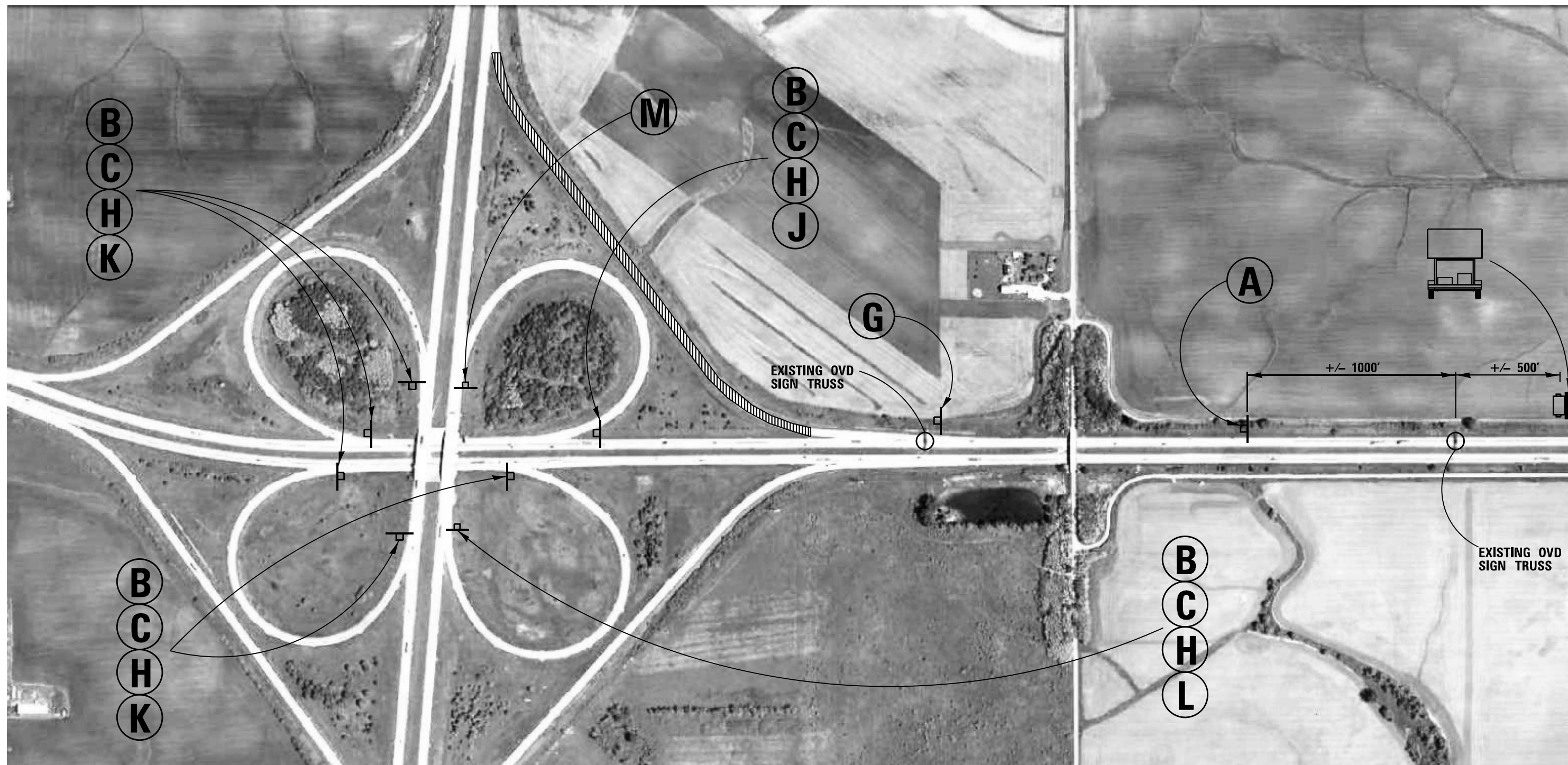
NOTES:
 HATCHED AREA REPRESENTS CLOSED RAMP

 RAMP SHALL BE CLOSED ACCORDING TO
 TRAFFIC CONTROL & PROTECTION STANDARD 701451

FILE NAME =	USER NAME = Earl.Peterson	DESIGNED - RW	REVISED -	STATE OF ILLINOIS DEPARTMENT OF TRANSPORTATION	DETOUR SIGNING FOR SOUTHEAST RAMP CLOSURE		F.A.I. RTE.	SECTION	COUNTY	TOTAL SHEETS	SHEET NO.
pw:/ildot-pw.bentley.com/PWIDOT/Documents/IDOT Offices/District 3/ORD Projects/D3667/DRAWING/CADsh/RW/D366N75 - cover.dgn		CHECKED - ECP	REVISED -		39	(50-5)SR, PP	LASALLE	25	16	CONTRACT NO. 66N75	
PLOT SCALE = *SCALE*		DATE - 2/6/2024	REVISED -		SCALE:	SHEET NO. 4 OF 5 SHEETS	STA.	TO STA.			
PLOT DATE = 3/27/2024					ILLINOIS						



NOTES:
 HATCHED AREA REPRESENTS CLOSED RAMP
 RAMP SHALL BE CLOSED ACCORDING TO
 TRAFFIC CONTROL & PROTECTION STANDARD 701451



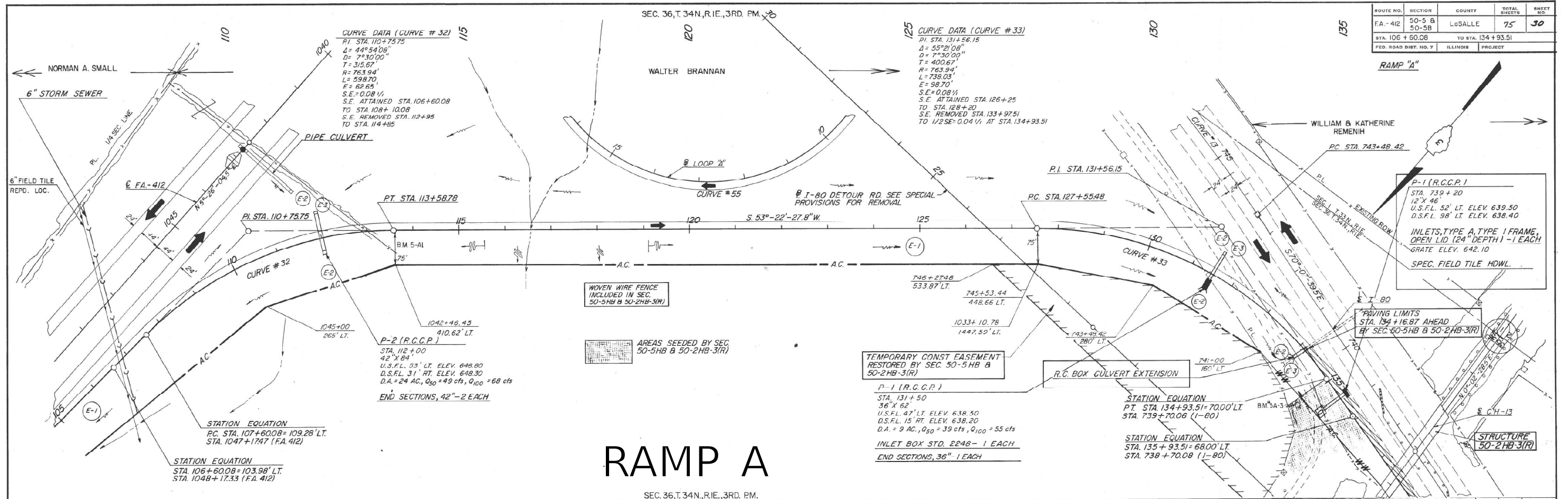
FILE NAME =	USER NAME = Earl.Peterson	DESIGNED - RW	REVISED -
p:\11dot-pw.bentley.com\PWIDOT\Documents\IDOT Offices\District 3\ORD Projects\03667\Drawings\CAD\Sheets\0366N75 - cover.dgn	DRAWN BY CAD	REVISIONS	REVISIONS
PLOT SCALE = #SCALE#	CHECKED - ECP	REVISIONS	REVISIONS
PLOT DATE = 3/27/2024	DATE - 2/6/2024	REVISIONS	REVISIONS

STATE OF ILLINOIS
 DEPARTMENT OF TRANSPORTATION

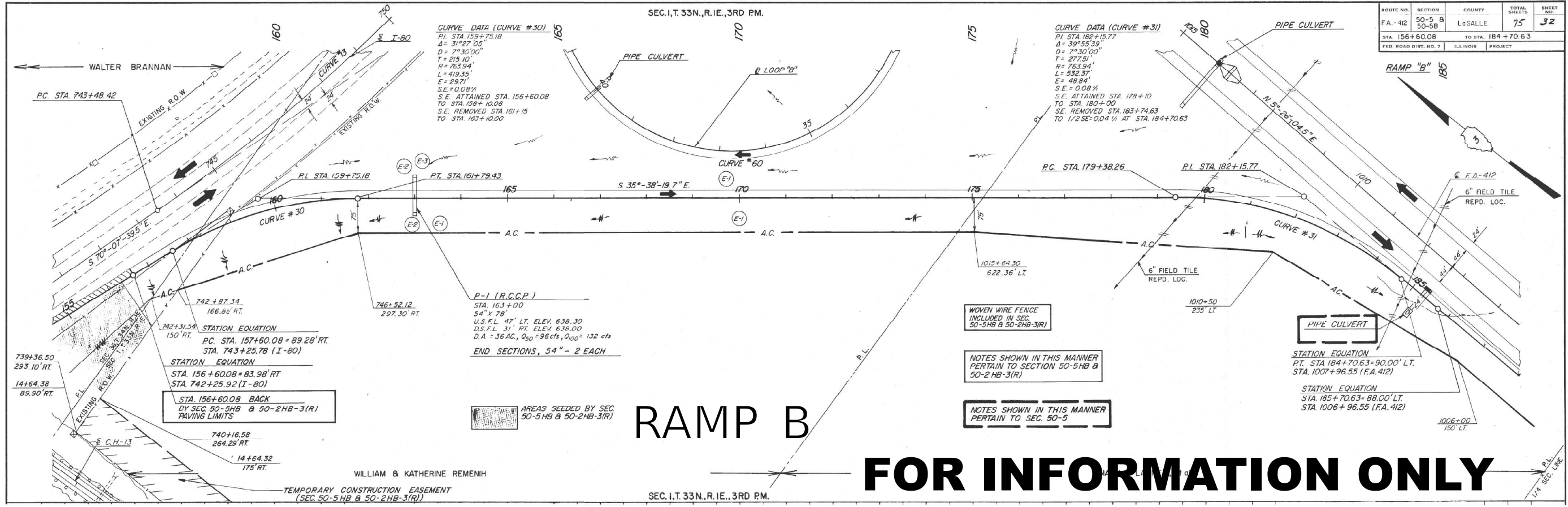
DETOUR SIGNING FOR
 NORTHEAST RAMP CLOSURE

SCALE: SHEET NO. 5 OF 5 SHEETS STA. TO STA.

F.A.I. RTE.	SECTION	COUNTY	TOTAL SHEETS	SHEET NO.
39	(50-5)SR, PP	LASALLE	25	17
ILLINOIS			CONTRACT NO. 66N75	



ROUTE NO.	SECTION	COUNTY	TOTAL SHEETS	SHEET NO.
FA-412	50-5 B 50-5B	LoSALLE	75	30



ROUTE NO.	SECTION	COUNTY	TOTAL SHEETS	SHEET NO.
FA-412	50-5 B 50-5B	LoSALLE	75	32

FOR INFORMATION ONLY

MODEL: Default
FILE NAME: c:\pwworking\peterson\cadd\0891475\3D\66N75 - cover.dgn

USER NAME = Earl.Peterson	DESIGNED - ECP	REVISED -
PLOT SCALE = \$SCALES	DRAWN - ECP	REVISED -
PLOT DATE = 3/27/2024	CHECKED - BM	REVISED -
	DATE - 2/9/2024	REVISED -

**STATE OF ILLINOIS
DEPARTMENT OF TRANSPORTATION**

**RAMP DETAIL
RAMPS "A" AND "B"**

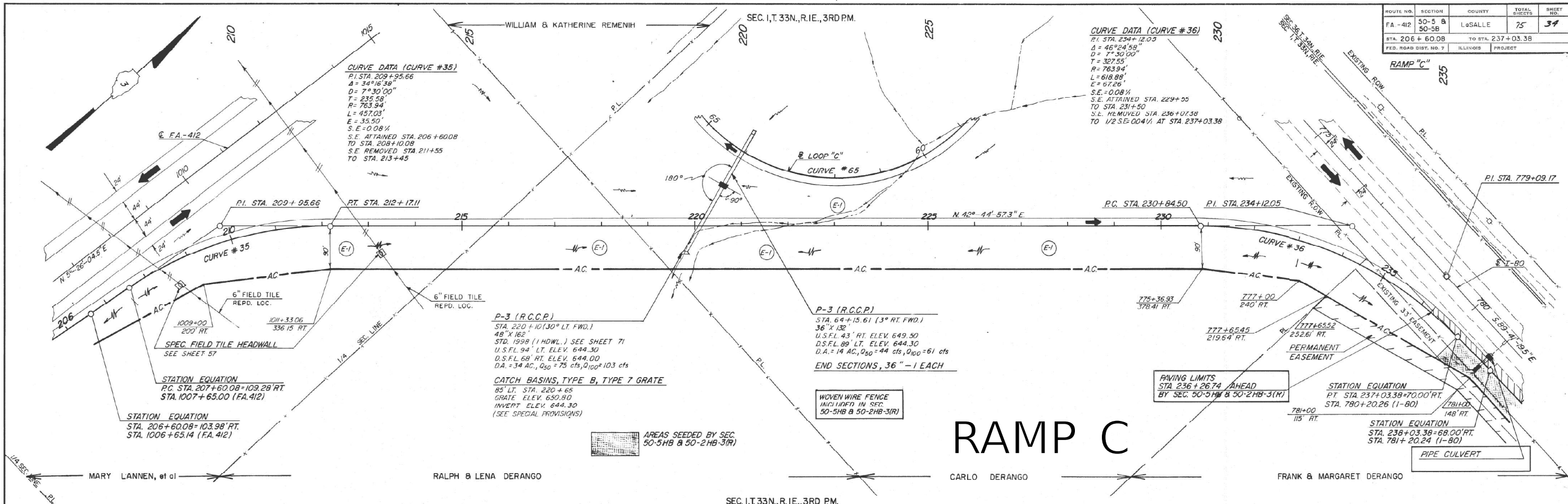
SCALE: SHEET 1 OF 2 SHEETS STA. TO STA.

F.A.I. RTE.	SECTION	COUNTY	TOTAL SHEETS	SHEET NO.
39	(50-5)SR, PP	LASALLE	25	18

CONTRACT NO. 66N75

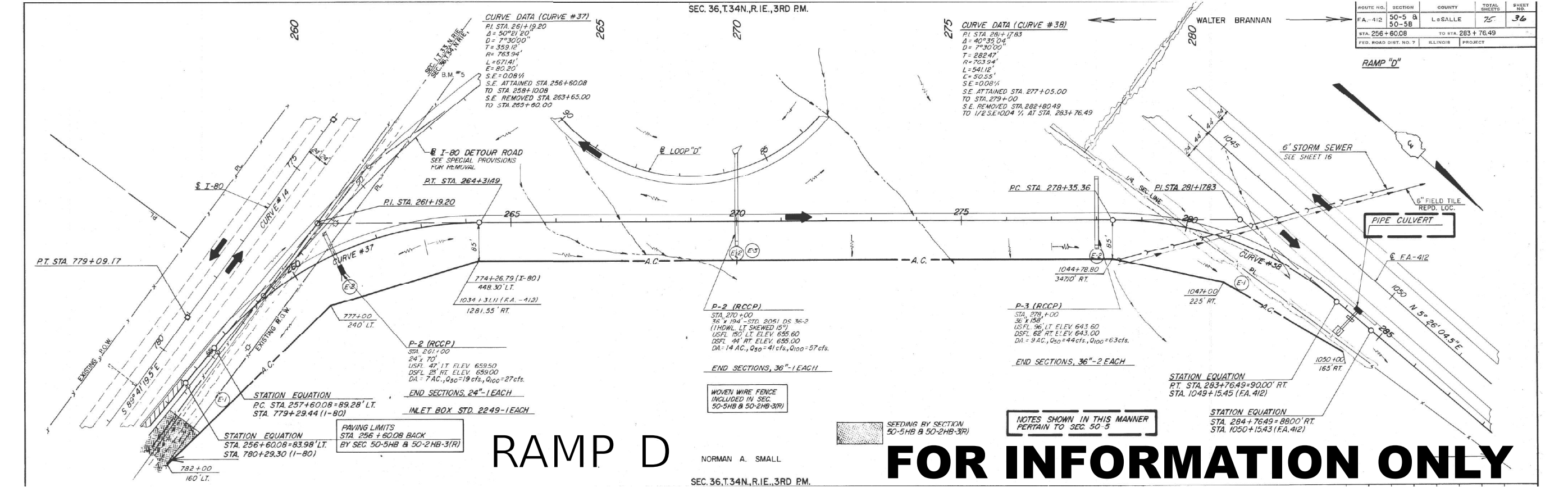
ILLINOIS FED. AID PROJECT

ROUTE NO.	SECTION	COUNTY	TOTAL SHEETS	SHEET NO.
FA-412	50-5 & 50-5B	LaSALLE	75	37
STA. 206+60.08		TO STA. 237+03.38		
FED. ROAD DIST. NO. 7		ILLINOIS PROJECT		



RAMP C

ROUTE NO.	SECTION	COUNTY	TOTAL SHEETS	SHEET NO.
FA-412	50-5 & 50-5B	LaSALLE	75	36
STA. 256+60.08		TO STA. 283+76.49		
FED. ROAD DIST. NO. 7		ILLINOIS PROJECT		



RAMP D

FOR INFORMATION ONLY

MODEL: Default
 FILE NAME: c:\pwworking\edpeters\mcd0891475\DD366R75 - cover.dgn

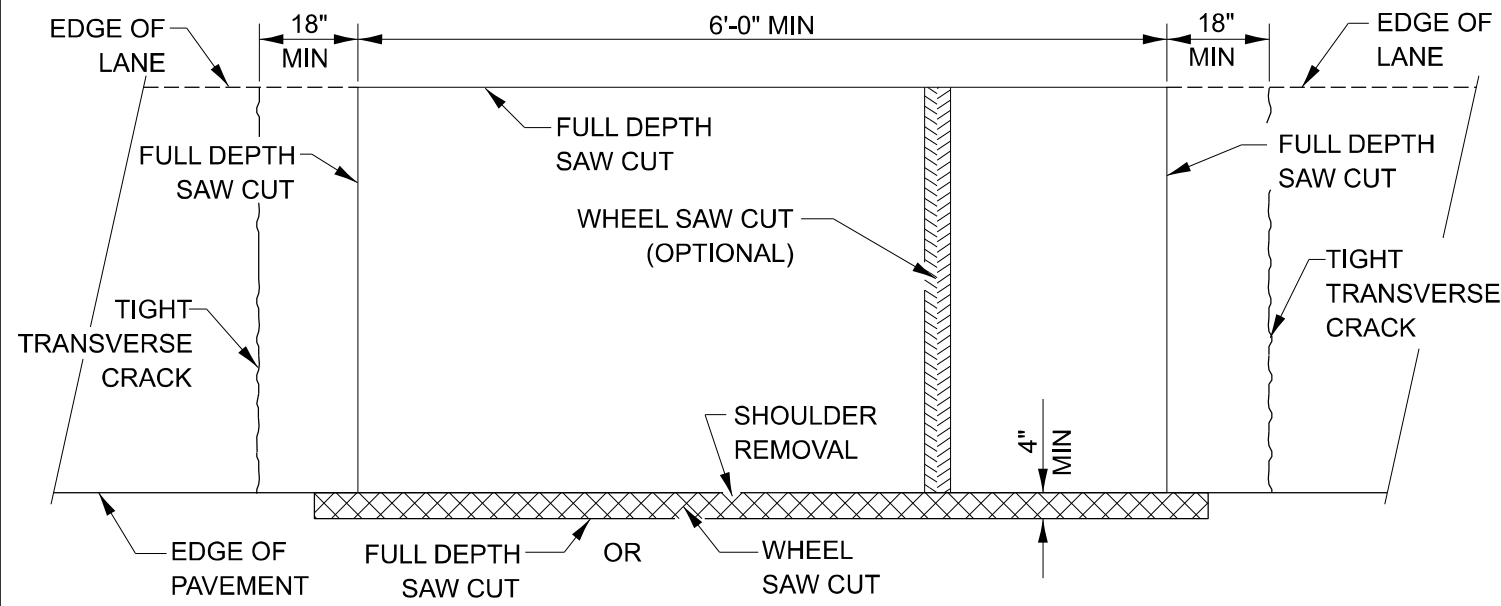
USER NAME	DESIGNED	REVISION
Earl.Peterson	ECP	-
	ECP	-
	BM	-
		-
		-
		-

STATE OF ILLINOIS
 DEPARTMENT OF TRANSPORTATION

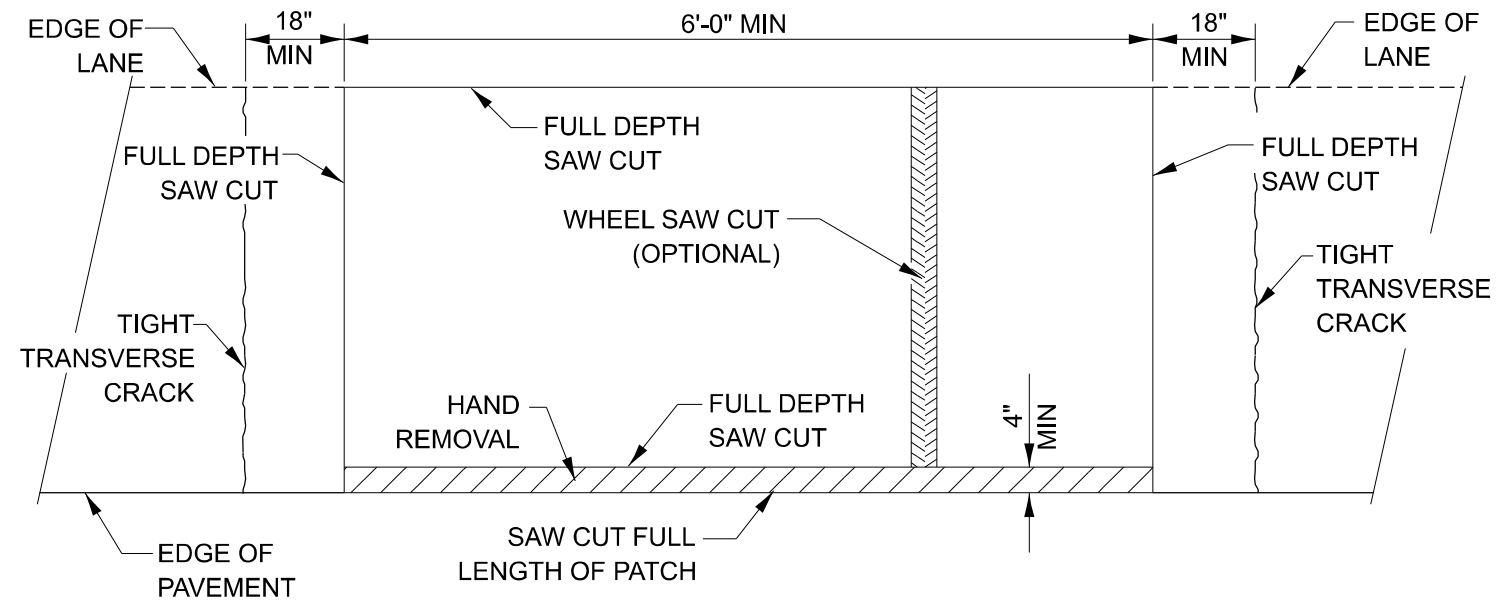
RAMP DETAIL
 RAMPS "C" AND "D"

SCALE: SHEET 2 OF 2 SHEETS STA. TO STA.

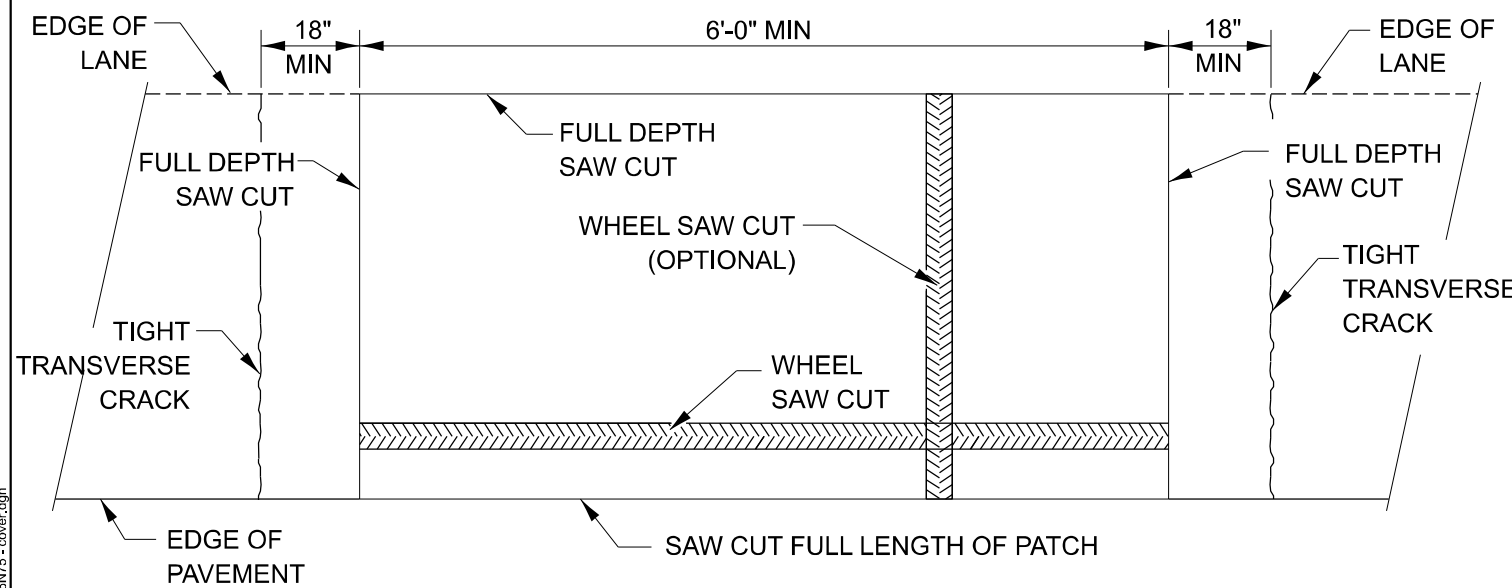
F.A.I. RTE.	SECTION	COUNTY	TOTAL SHEETS	SHEET NO.
39	(50-5)SR, PP	LASALLE	25	19
CONTRACT NO. 66N75				
ILLINOIS FED. AID PROJECT				



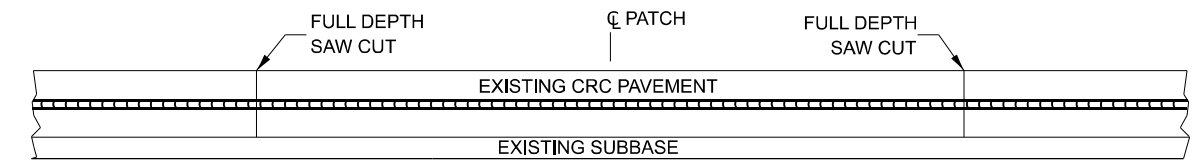
PAVEMENT SAWING DETAIL
(HMA SHOULDER)



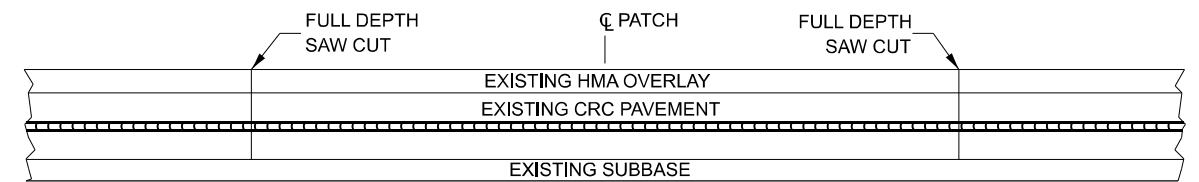
PAVEMENT SAWING DETAIL
(PCC SHOULDER)



ALTERNATE SAWING DETAIL
(PCC SHOULDER)



EXISTING PAVEMENT WITHOUT HMA SURFACE



EXISTING PAVEMENT WITH HMA SURFACE

PAVEMENT SAWING DETAIL FOR CLASS A PATCHING
(CRC PAVEMENT)

MODEL: Default
FILE NAME: c:\pwwork\jw\dot\peters\mcc\081475\0266N75 - cover.dgn

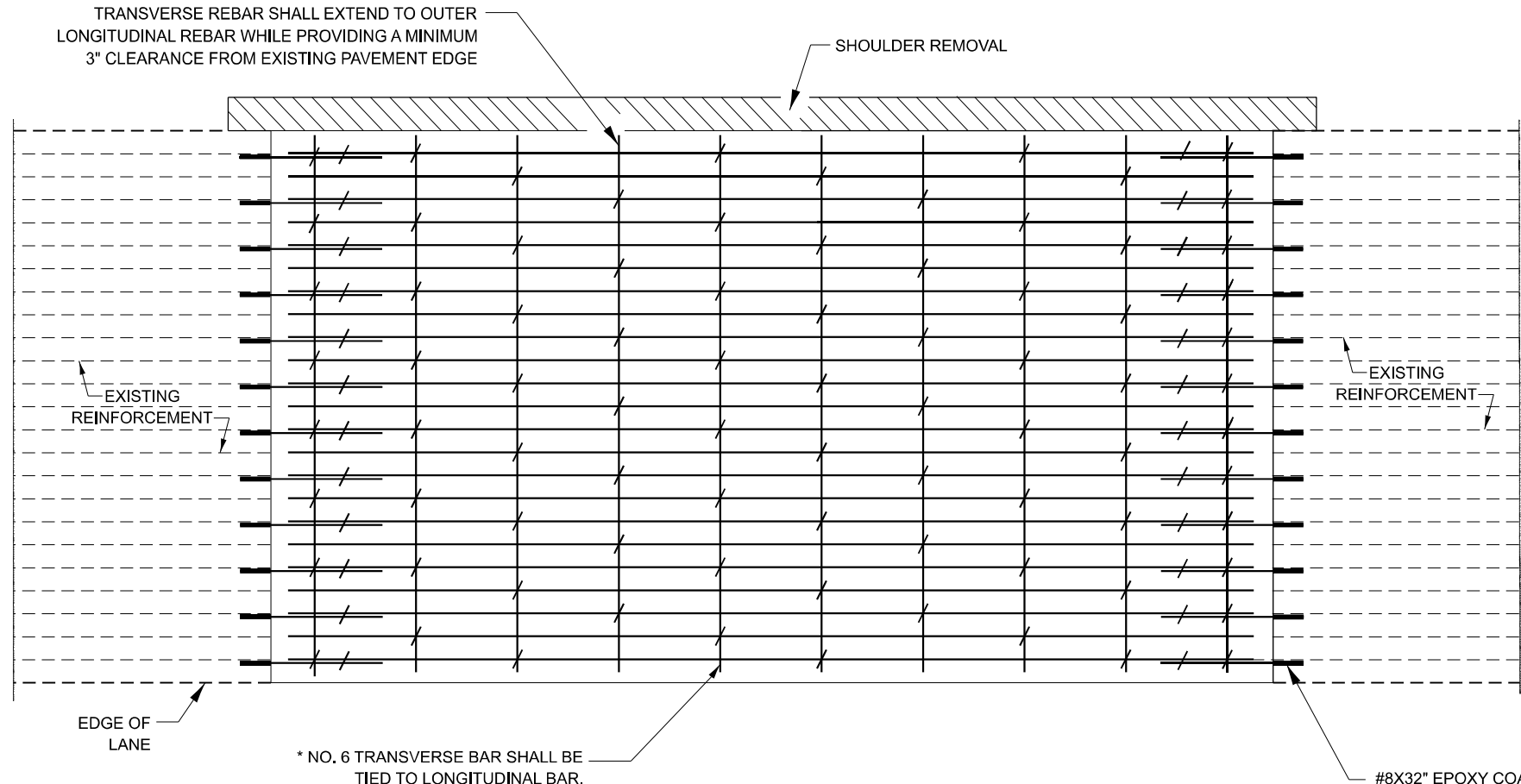
USER NAME = Earl.Peterson	DESIGNED -	REVISED -
	DRAWN -	REVISED -
PLOT SCALE = \$SCALE\$	CHECKED -	REVISED -
PLOT DATE = 3/27/2024	DATE -	REVISED -

STATE OF ILLINOIS
DEPARTMENT OF TRANSPORTATION

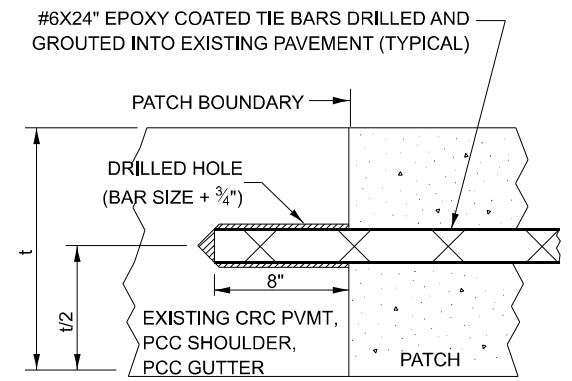
CLASS A PATCHING DETAILS

SCALE: SHEET 1 OF 3 SHEETS STA. TO STA.

F.A.I. RTE. 39	SECTION (50-5)SR, PP	COUNTY LASALLE	TOTAL SHEETS 25	SHEET NO. 20
CONTRACT NO. 66N75				
ILLINOIS FED. AID PROJECT				

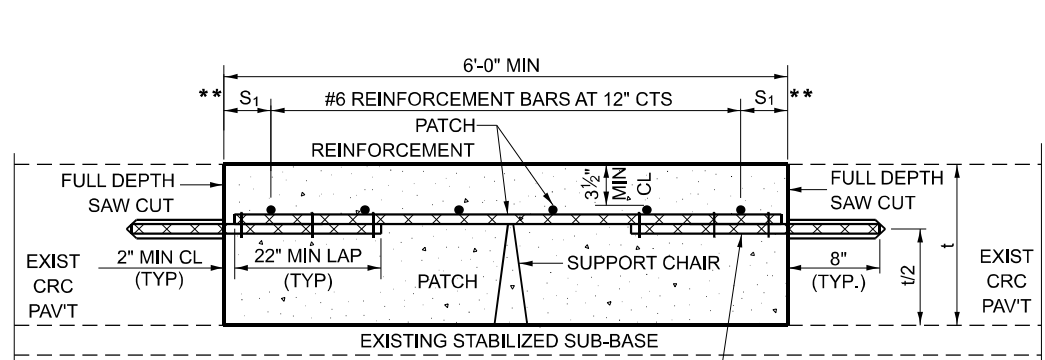


PAVEMENT REINFORCEMENT DETAIL



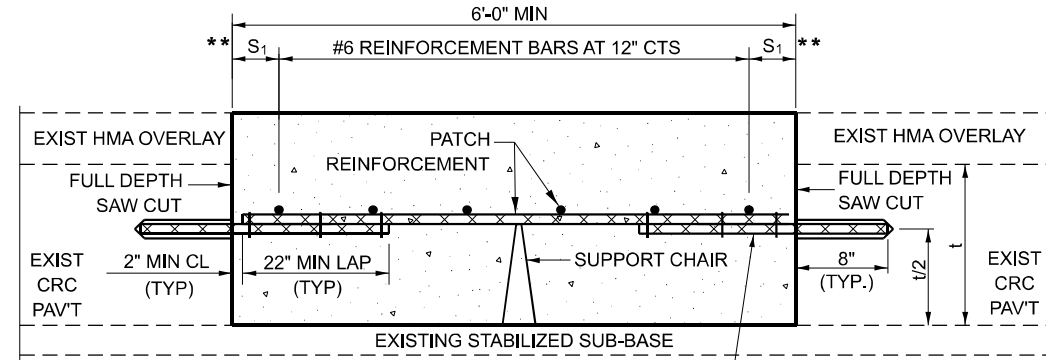
LONGITUDINAL CONSTRUCTION JOINT

PATCHES MORE THAN 20' IN LENGTH SHALL BE TIED TO ADJACENT PAVEMENT, PCC SHOULDERS OR PCC CURB AND GUTTER WITH #6x24" EPOXY COATED TIE BARS AT 36" CENTERS.



WITHOUT HMA OVERLAY

#8X32" EPOXY COATED TIE BARS DRILLED AND GROUDED INTO EXISTING PAVEMENT (TYPICAL)



WITH HMA OVERLAY

#8X32" EPOXY COATED TIE BARS DRILLED AND GROUDED INTO EXISTING PAVEMENT (TYPICAL)

PATCHING DETAIL FOR CLASS A PATCHING (CRC PAVEMENT)

NOTES:
EXISTING LONGITUDINAL REINFORCEMENT:
22 - #5 BARS AT 6 1/2" SPACING.

SPACING OF NEW LONGITUDINAL REINFORCEMENT SHALL MATCH THE SPACING OF EXISTING REINFORCEMENT AND SHALL BE TIED TOGETHER WITH A MINIMUM OF TWO TIES PER BAR.

TRANSVERSE CONSTRUCTION JOINTS: #8 X 32" EPOXY COATED TIE BAR SHALL BE DRILLED AND GROUDED INTO THE EXISTING PCC PAVEMENT AT A SPACING OF ± TWICE THE SPACING OF EXISTING LONGITUDINAL REINFORCEMENT BARS AND SHALL BE TIED TO PROPOSED LONGITUDINAL REINFORCEMENT WITH A MINIMUM OF TWO TIES PER BAR WHEN PRACTICAL.

* EVERY THIRD INTERSECTION MUST BE TIED. WHEN THE MINIMUM CLEARANCE CANNOT BE OBTAINED WITH THE TRANSVERSE REBAR ON TOP, THEN THE TRANSVERSE REBAR SHALL BE TIED TO THE BOTTOM OF THE LONGITUDINAL REBAR.

** VARIABLE: WHERE S₁ IS 2 1/2" MIN. AND 12" MAX.

MODEL: Default
FILE NAME: c:\pwwork\jw\jtd\peterson\ec\0891475\066N75 - cover.dgn

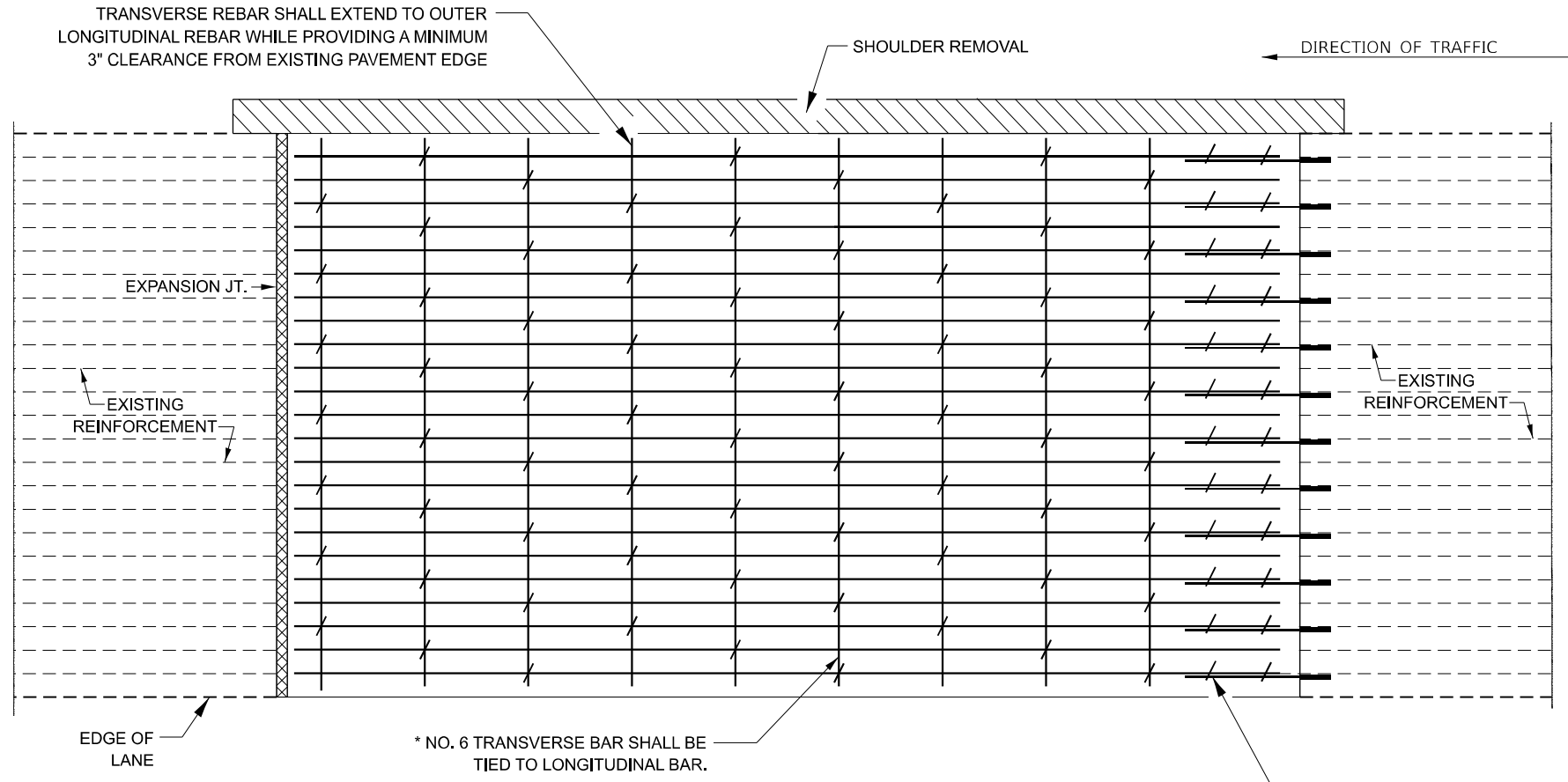
USER NAME = Earl.Peterson	DESIGNED - RW	REVISED -
	DRAWN - RW	REVISED -
PLOT SCALE = \$SCALES	CHECKED - YP	REVISED -
PLOT DATE = 3/27/2024	DATE - 1/16/2024	REVISED -

STATE OF ILLINOIS
DEPARTMENT OF TRANSPORTATION

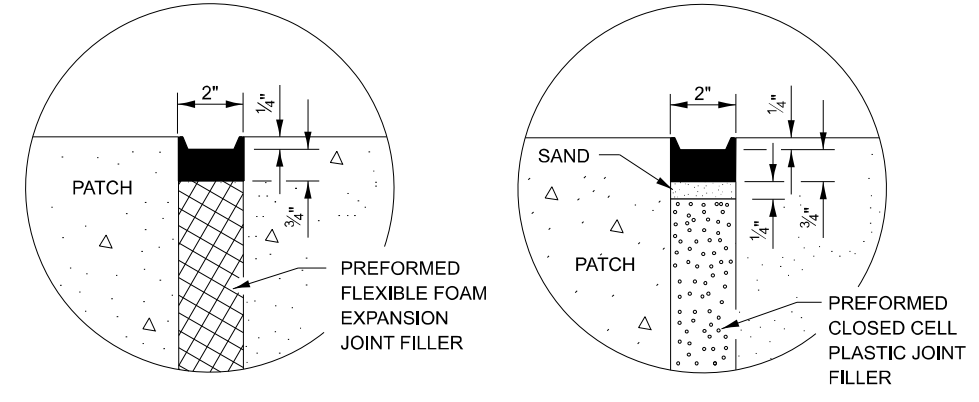
CLASS A PATCHING DETAILS

SCALE: SHEET 2 OF 3 SHEETS STA. TO STA.

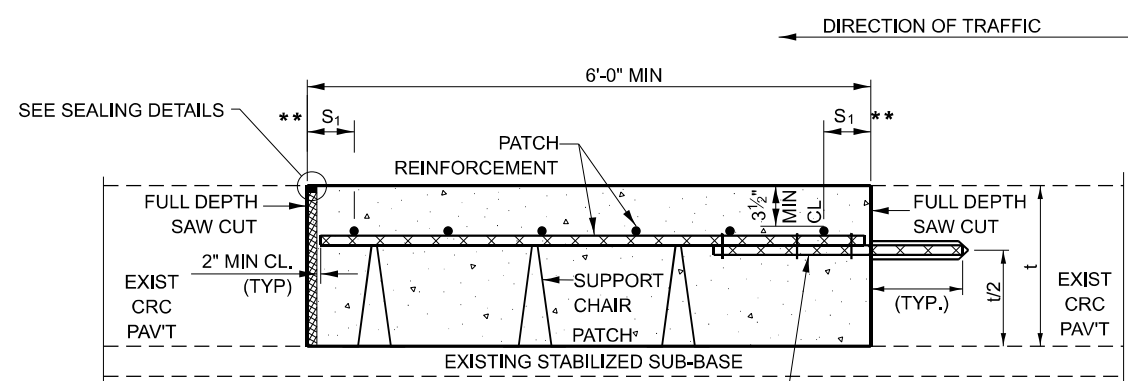
F.A.I. RTE. 39	SECTION (50-5)SR, PP	COUNTY LASALLE	TOTAL SHEETS 25	SHEET NO. 21
CONTRACT NO. 66N75				
ILLINOIS FED. AID PROJECT				



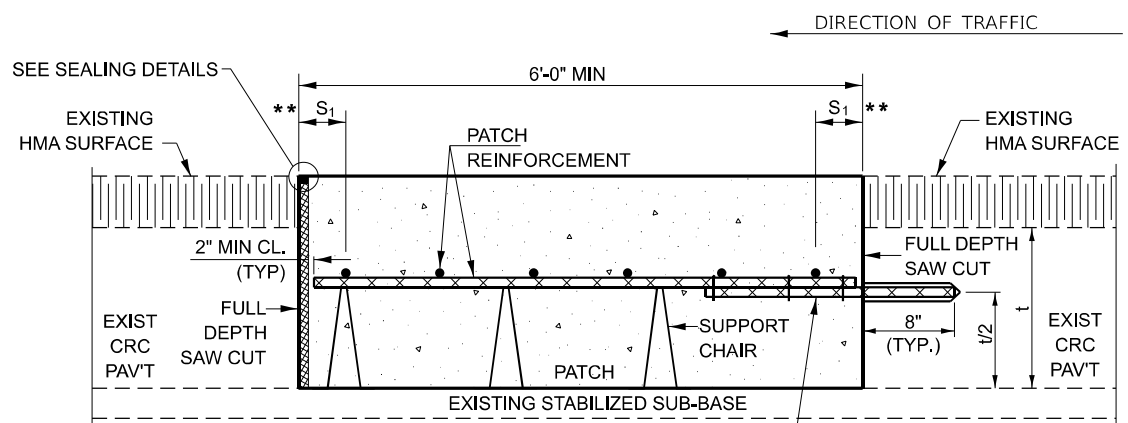
PAVEMENT REINFORCEMENT DETAIL



SEALING DETAILS



WITHOUT HMA OVERLAY



WITH HMA OVERLAY

CLASS A PATCH WITH EXPANSION JOINT

#8X32" EPOXY COATED TIE BARS DRILLED AND GROUTED INTO EXISTING PAVEMENT (TYPICAL). MINIMUM 22" LAP WITH PATCH REINFORCEMENT.

#8X32" EPOXY COATED TIE BARS DRILLED AND GROUTED INTO EXISTING PAVEMENT (TYPICAL). MINIMUM 22" LAP WITH PATCH REINFORCEMENT.

MODEL: Default FILE NAME: c:\pwwork\jw\idol\peterson\ecad\081475\ID066N75 - cover.dgn

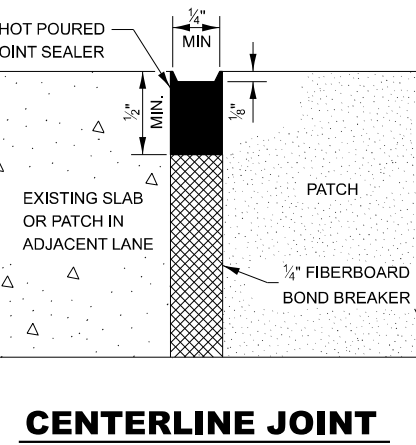
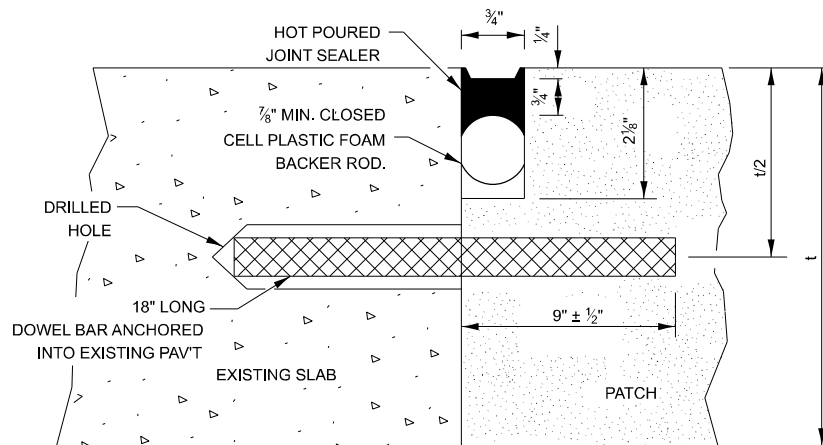
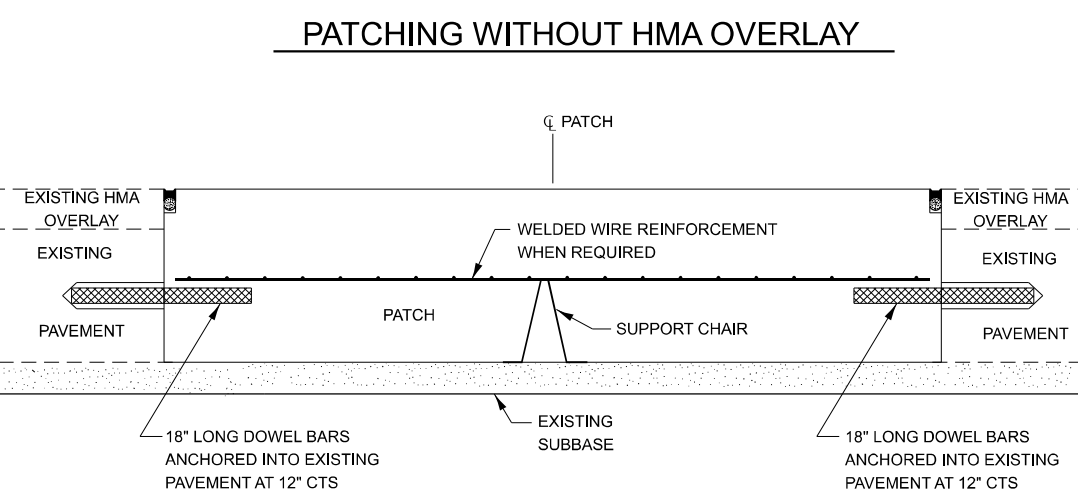
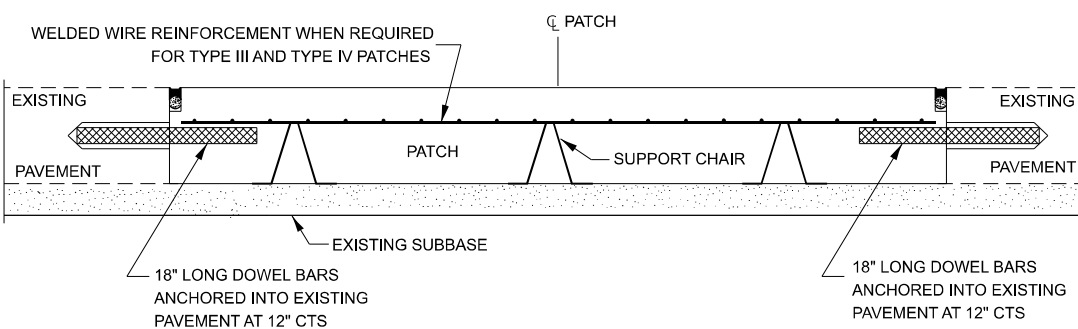
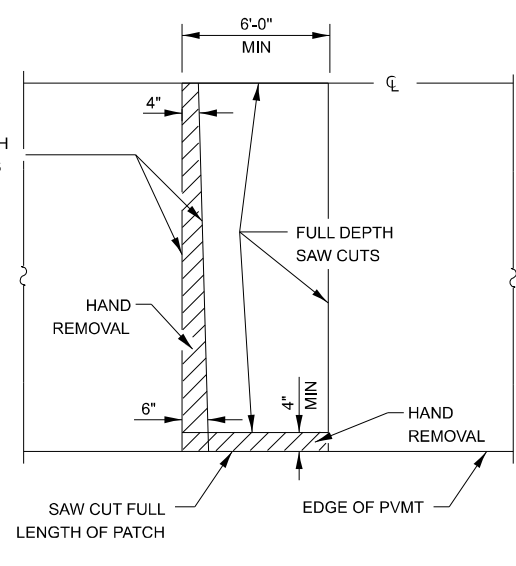
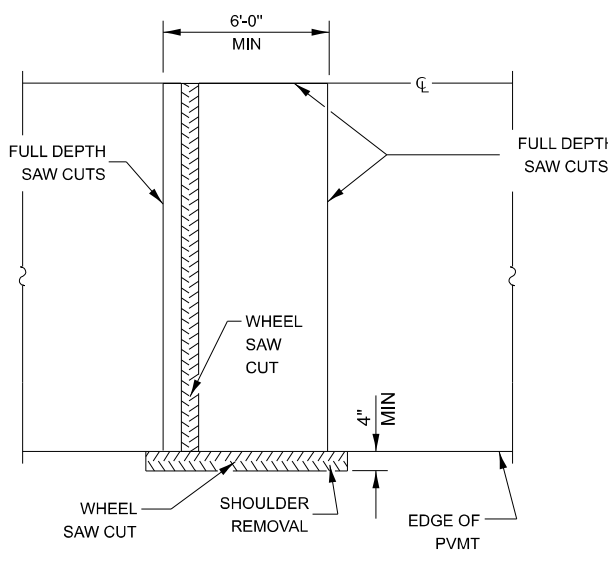
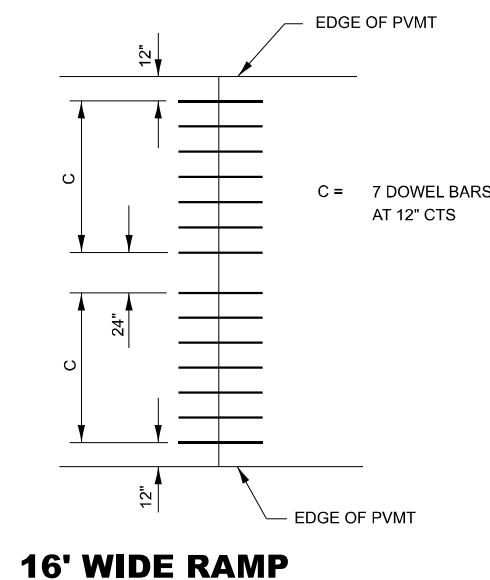
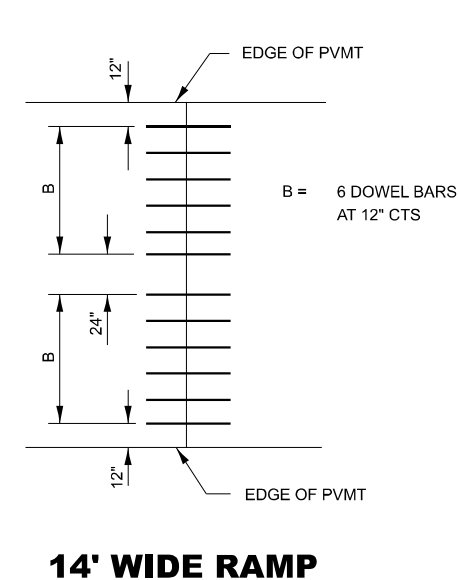
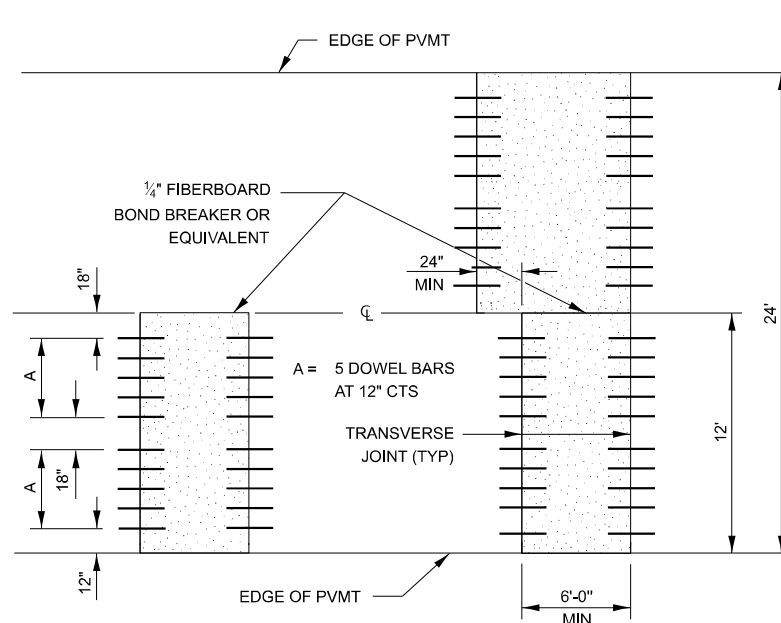
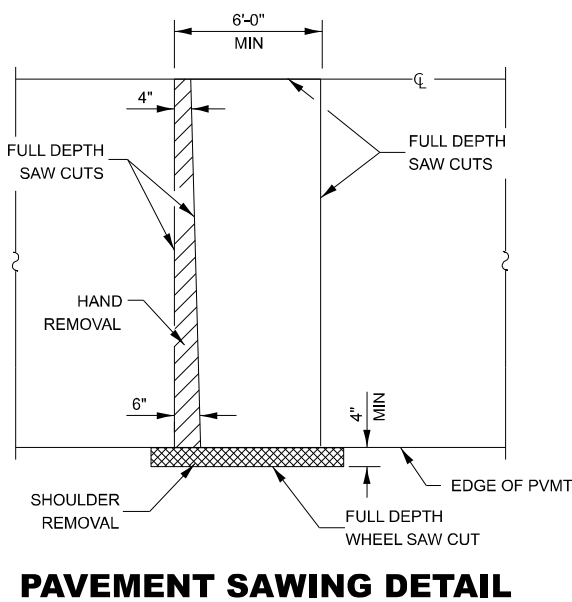
USER NAME = Earl.Peterson	DESIGNED - RW	REVISED -
	DRAWN - RW	REVISED -
PLOT SCALE = \$SCALES	CHECKED - YP	REVISED -
PLOT DATE = 3/27/2024	DATE - 1/16/2024	REVISED -

**STATE OF ILLINOIS
DEPARTMENT OF TRANSPORTATION**

CLASS A PATCHING DETAILS

SCALE: SHEET 3 OF 3 SHEETS STA. TO STA.

F.A.I. RTE. 39	SECTION (50-5)SR, PP	COUNTY LASALLE	TOTAL SHEETS 25	SHEET NO. 22
CONTRACT NO. 66N75				
ILLINOIS FED. AID PROJECT				



DOWEL BAR TABLE		
PAVEMENT THICKNESS	DOWEL BAR DIAMETER	HOLE DIAMETER
10" OR GREATER	1 1/2"	1 5/8"
8" THRU 9.99"	1 1/4"	1 3/8"
LESS THAN 8"	1"	1 1/8"

GENERAL NOTES

THE TRANSVERSE JOINTS FOR CLASS B PATCHES SHALL ALIGN WITH JOINTS OR CRACKS IN THE ADJACENT LANE WHENEVER POSSIBLE.

SEE STANDARD 420701 FOR DETAILS OF PAVEMENT WELDED WIRE REINFORCEMENT.

USER NAME = Earl.Peterson	DESIGNED -	REVISED -
PLLOT SCALE = \$SCALES	DRAWN -	REVISED -
PLLOT DATE = 3/27/2024	CHECKED -	REVISED -
	DATE -	REVISED -

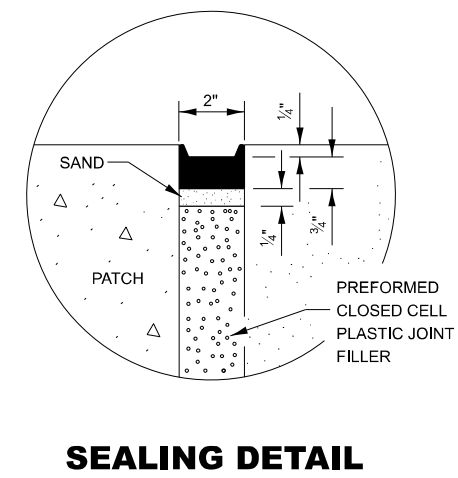
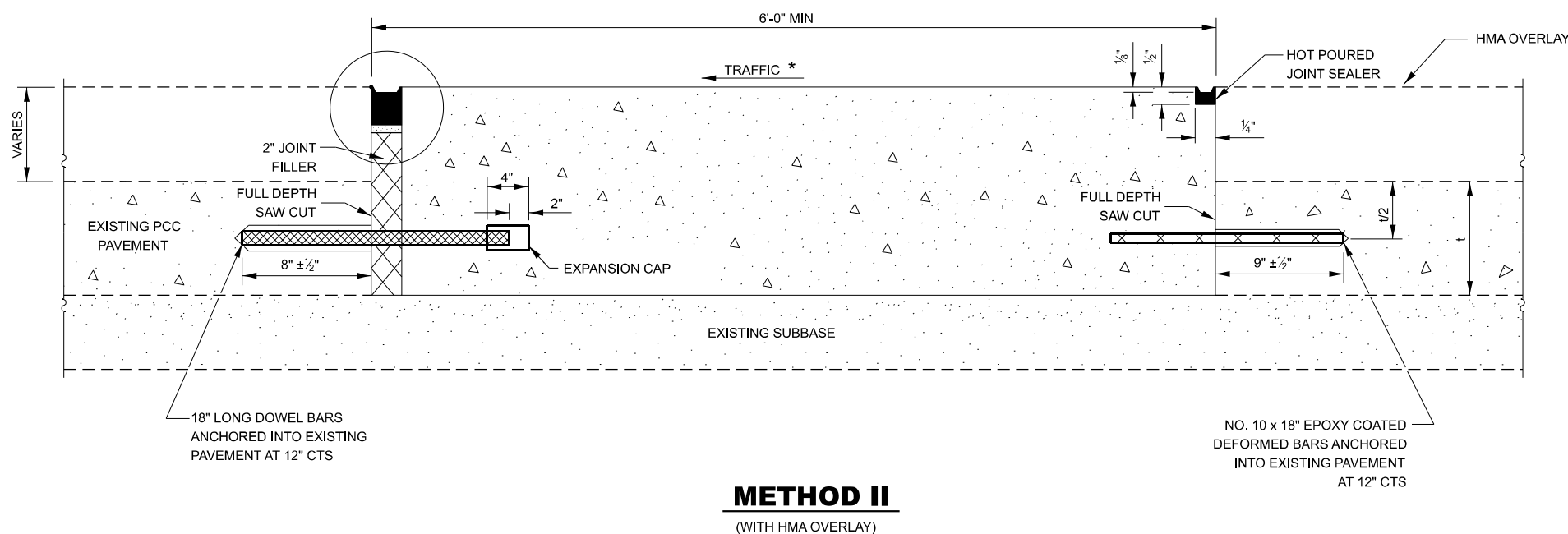
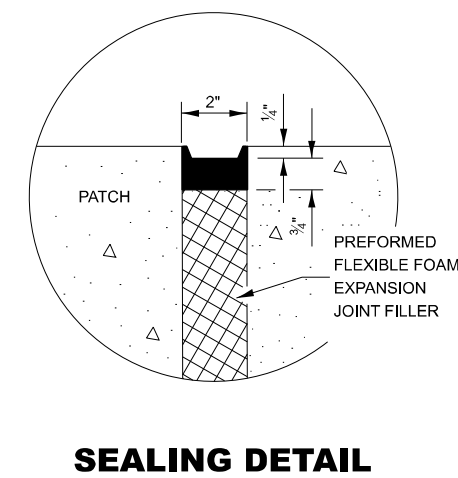
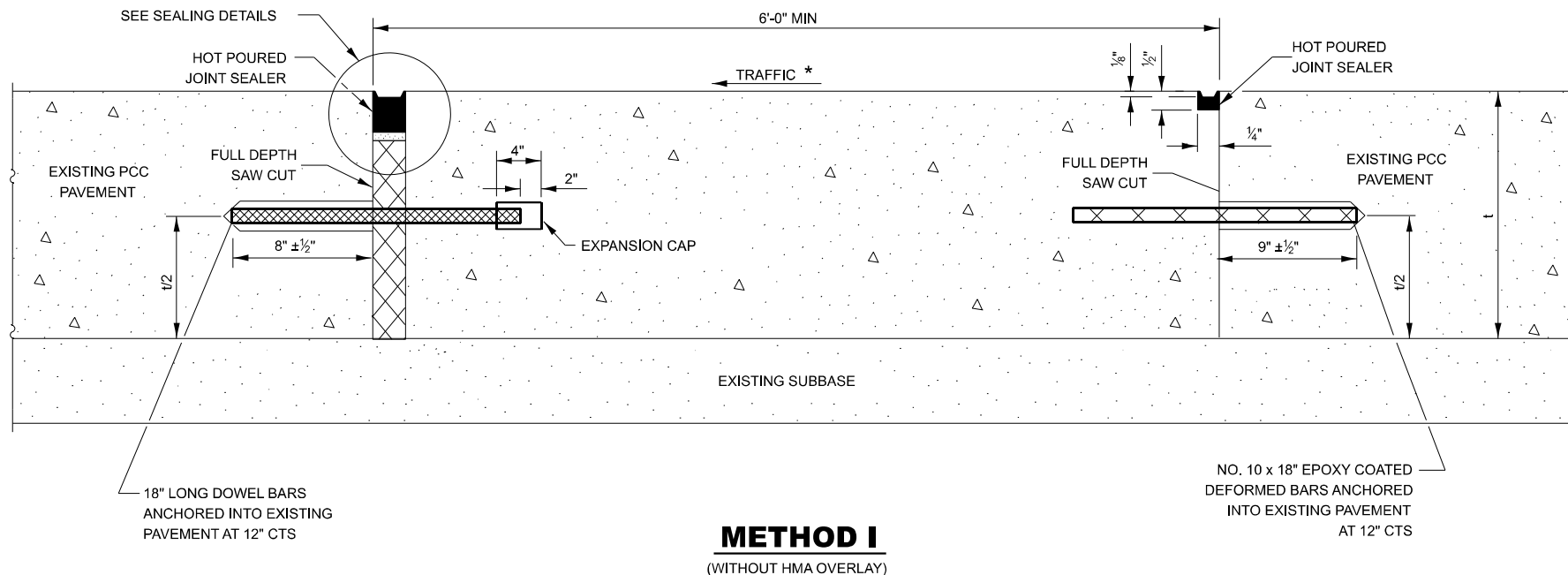
STATE OF ILLINOIS
DEPARTMENT OF TRANSPORTATION

CLASS B PATCHING DETAILS

SCALE: SHEET 1 OF 2 SHEETS STA. TO STA.

F.A.I. RTE.	SECTION	COUNTY	TOTAL SHEETS	SHEET NO.
39	(50-5)SR, PP	LASALLE	25	23
CONTRACT NO. 66N75				

ILLINOIS FED. AID PROJECT



NOTE
 * WHEN RE-ESTABLISHING A TRANSVERSE EXPANSION JOINT ON A TWO-WAY ROAD, REVERSE THE ORIENTATION OF THE DOWEL BARS WITH RESPECT TO TRAFFIC FOR ONE OF THE PATCHES SUCH THAT THE JOINT WILL BE CONTINUOUS ACROSS BOTH LANES.

MODEL: Default
 FILE NAME: \\idirect-pw-bentley.com\P\INDOT\Documents\DOT 0_ces\Btfrct_308D\Project\366N75\CAD\Drawings\366N75 - cover.dgn

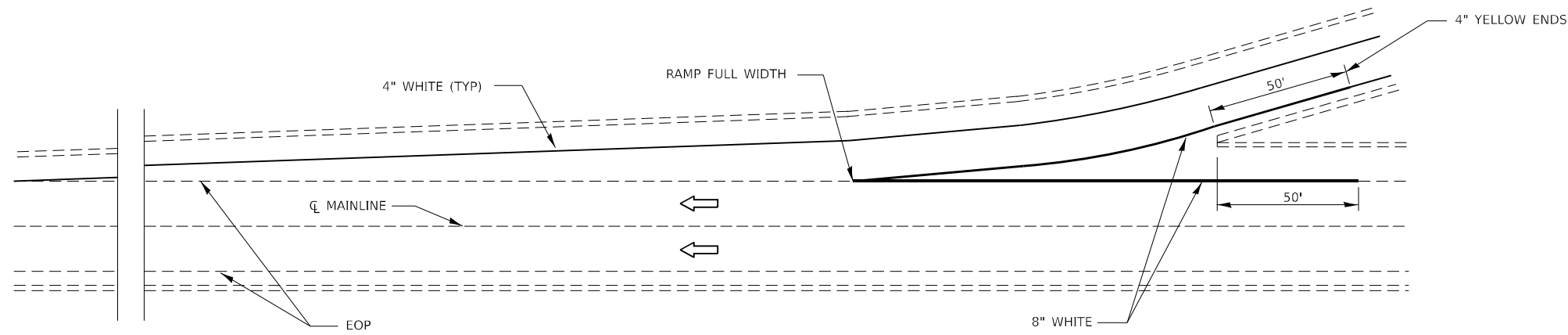
USER NAME = Earl.Peterson	DESIGNED -	REVISED -
	DRAWN -	REVISED -
PLOT SCALE = \$SCALE\$	CHECKED -	REVISED -
PLOT DATE = 3/27/2024	DATE -	REVISED -

STATE OF ILLINOIS
 DEPARTMENT OF TRANSPORTATION

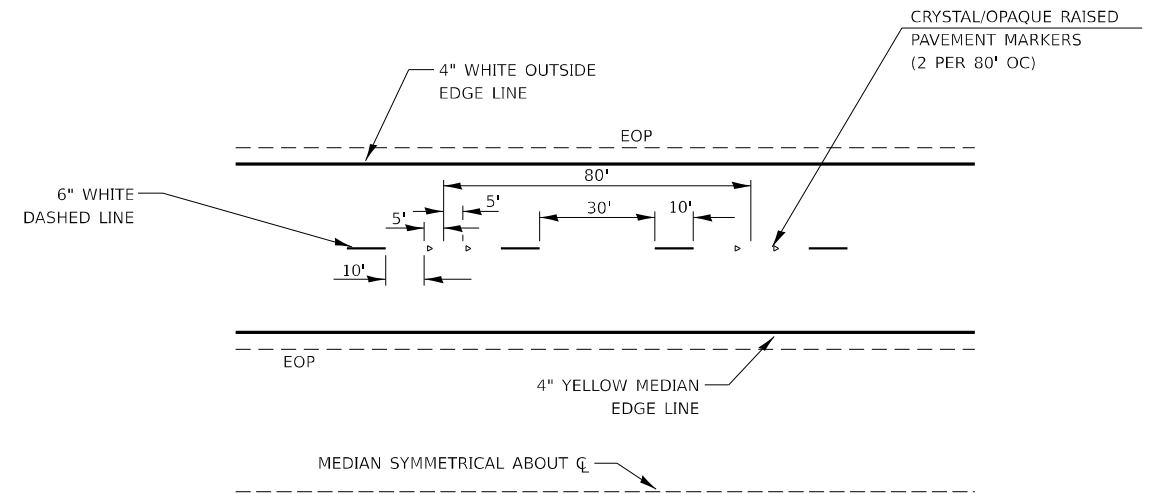
CLASS B PATCHING DETAILS

SCALE: SHEET 2 OF 2 SHEETS STA. TO STA.

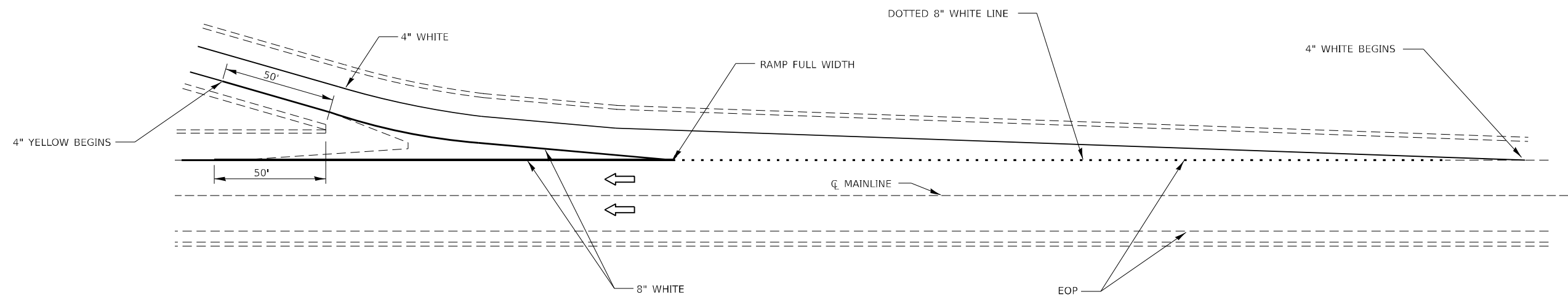
F.A.I. RTE.	SECTION	COUNTY	TOTAL SHEETS	SHEET NO.
39	(50-5)SR, PP	LASALLE	25	24
CONTRACT NO. 66N75				
ILLINOIS FED. AID PROJECT				



TYPICAL PAVEMENT MARKING FOR ENTRANCE RAMP TERMINALS



TYPICAL PAVEMENT MARKINGS



TYPICAL PAVEMENT MARKINGS FOR EXIT RAMP TERMINALS

MODEL: Default
 FILE NAME: p:\idirect-pw-beadley.com\PIV\DOT\Documents\DOT 0_csr\District_3\ORD Project\366N75\CADD\366N75\CAD\Sheet\366N75 - cover.dgn

USER NAME = Earl.Peterson	DESIGNED -	REVISED -
	DRAWN -	REVISED -
PLOT SCALE = \$SCALE\$	CHECKED -	REVISED -
PLOT DATE = 3/27/2024	DATE -	REVISED -

**STATE OF ILLINOIS
DEPARTMENT OF TRANSPORTATION**

RAMP PAVEMENT MARKING

SCALE: SHEET 1 OF 1 SHEETS STA. TO STA.

F.A.I. RTE. 39	SECTION (50-5)SR, PP	COUNTY LASALLE	TOTAL SHEETS 25	SHEET NO. 25
CONTRACT NO. 66N75				
ILLINOIS FED. AID PROJECT				