

INDEX OF SHEETS

- 1 COVER SHEET
- 2 GENERAL NOTES & STANDARDS
- 3 - 4 LINE DIAGRAM
- 5 SUMMARY OF QUANTITIES
- 6 TYPICAL SECTIONS
- 7 - 8 SCHEDULE OF QUANTITIES
- 9 - 10 DETAILS

LIST OF ILLINOIS DOT HIGHWAY STANDARDS

000001-08	STANDARD SYMBOLS, ABBREVIATIONS AND PATTERNS
001006	DECIMAL OF AN INCH AND OF A FOOT
701311-03	LANE CLOSURE, 2L, 2W, MOVING OPERATIONS - DAY ONLY
701400-12	APPROACH TO LANE CLOSURE, FREEWAY/EXPRESSWAY
701406-13	LANE CLOSURE, FREEWAY/EXPRESSWAY, DAY OPERATIONS ONLY
701426-09	LANE CLOSURE, MULTILANE INTERMITTENT OR MOVING OPERATION, FOR SPEEDS ≥ 45 MPH
701901-09	TRAFFIC CONTROL DEVICES
780001-05	TYPICAL PAVEMENT MARKINGS
781001-04	TYPICAL APPLICATIONS RAISED REFLECTIVE PAVEMENT MARKERS

**STATE OF ILLINOIS
DEPARTMENT OF TRANSPORTATION**

**PROPOSED
HIGHWAY PLANS**

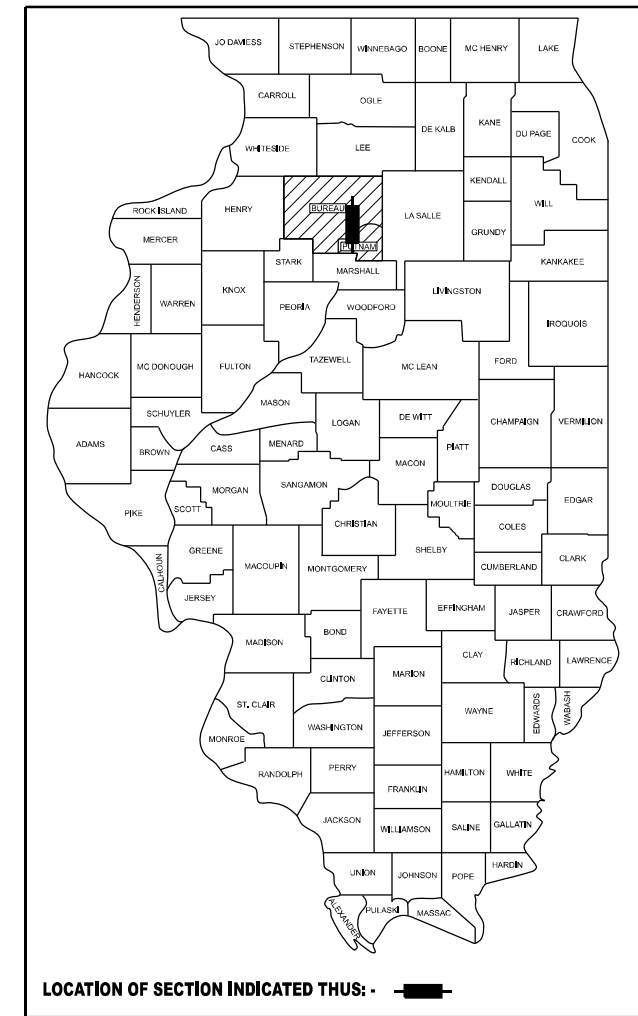
**FAI ROUTE 180 (I-180)
SECTION (06-1,2,&78-1)|
PROJECT - STATE
CENTERLINE JOINT REPAIR
BUREAU & PUTNAM COUNTY**

C-93-062-24

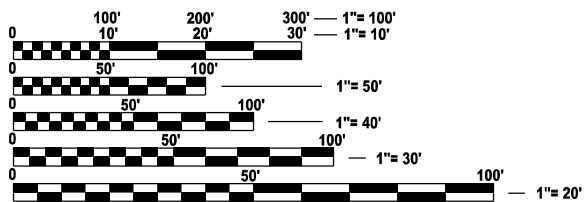


F.A.I. RTE.	SECTION	COUNTY	TOTAL SHEETS	SHEET NO.
180	(06-1,2, & 78-1)	VARIOUS*	10	1
*BUREAU, PUTNAM		ILLINOIS	CONTRACT NO. 66P15	

D-93-027-24

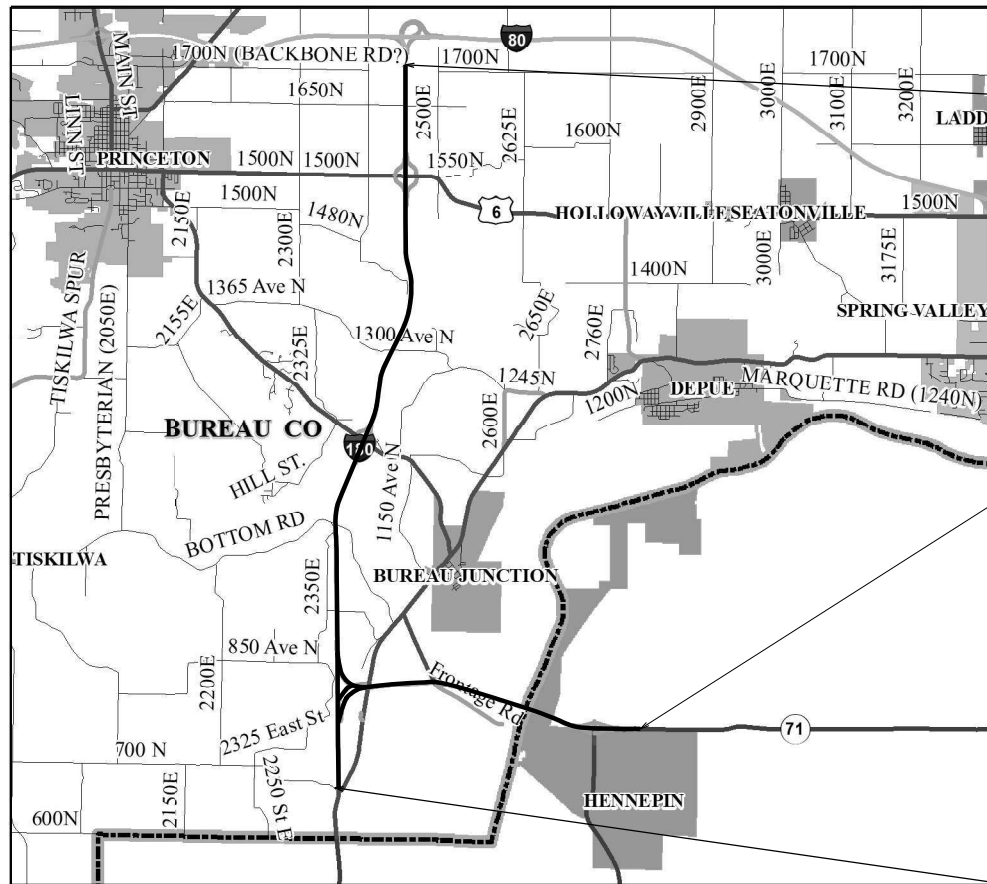


INTERSTATE
2021 ADT = 3500
P.V.=71.3%
S.U.=9.4%
M.U.=19.3%



FULL SIZE PLANS HAVE BEEN PREPARED USING STANDARD ENGINEERING SCALES. REDUCED SIZED PLANS WILL NOT CONFORM TO STANDARD SCALES. IN MAKING MEASUREMENTS ON REDUCED PLANS, THE ABOVE SCALES MAY BE USED.

J.U.L.I.E.
JOINT UTILITY LOCATION INFORMATION FOR EXCAVATION
1-800-892-0123
OR 811



**BEGIN PROJECT
STA 211 + 84**

**(E) END PROJECT
STA 157 + 23**

**(S) END PROJECT
STA 728 + 44**

SEE SHEET 3 FOR STRUCTURE INFORMATION

GROSS LENGTH = 105719.2 FT. = 20.02 MILE
NET LENGTH = 95479.7 FT. = 18.08 MILE

**PROJECT ENGINEER: JOSEPH KANNEL, P.E.
UNIT CHIEF: STEPHENIE CARMIN
DISTRICT 3 NO. (815) 434-6131**

CONTRACT NO. 66P15

STATE OF ILLINOIS
DEPARTMENT OF TRANSPORTATION

SUBMITTED April 4, 20 24
Trisha Thompson REGIONAL ENGINEER
May 10, 2024 *SEA/ERS*
ENGINEER OF DESIGN AND ENVIRONMENT
May 10, 2024 *Steph McNeill*
DIRECTOR OF HIGHWAYS PROJECT IMPLEMENTATION

**PRINTED BY THE AUTHORITY
OF THE STATE OF ILLINOIS**

GENERAL NOTES

ONLY THE PASSING LANE IS TO BE CLOSED FOR THIS CENTERLINE WORK

EXCEPT AS NOTED ON THE PLANS, PAVEMENT GRADES SHOWN ARE AT THE TOP OF PAVEMENT SURFACES.

THE ENGINEER WILL BE THE SOLE JUDGE CONCERNING CURING TIME FOR THE VARIOUS HMA LIFTS.

THE FOLLOWING RATES OF APPLICATION HAVE BEEN USED IN CALCULATING PLAN QUANTITIES:

HMA RESURFACING	112	LBS / SQ YD / IN
SHORT TERM PAVEMENT MARKING	10	FT /100 FT OF APPLICATION
MIX FOR CRACKS, JTS & FLGWYS	0.0003	TONS / SQ YD

ALL DAMAGE TO DEPARTMENT OWNED UNDERGROUND FACILITIES, CAUSED BY THE CONTRACTOR SHALL BE REPAIRED TO THE SATISFACTION OF THE ENGINEER AND AT NO EXPENSE TO THE DEPARTMENT. THIS SHALL INCLUDE ALL TEMPORARY REPAIRS REQUIRED TO KEEP THE FACILITY OPERATIONAL WHILE MATERIAL IS BEING OBTAINED TO MAKE PERMANENT REPAIRS.

HMA MIXTURE REQUIREMENT TABLE	
LOCATION(S):	ENTIRE PROJECT
MIXTURE USE(S):	LONGITUDINAL PARTIAL DEPTH PATCHING
BINDER GRADE (PG):	PG 64-22
DESIGN AIR VOIDS:	4.0% @ N 7C
MIXTURE COMPOSITION: (MIXTURE GRADATION)	IL 9.5
FRICTION AGGREGATE:	MIXTURE D
MIXTURE WEIGHT:	112.0 LB/SY/IN
QUALITY MANAGEMENT PROGRAM:	QC/QA
SUBLOT SIZE:	N/A
DENSITY TEST METHOD:	CORES / NUCLEAR

STATE OF ILLINOIS
DEPARTMENT OF TRANSPORTATION
DISTRICT THREE
AS BUILT INFORMATION

SUPERVISING CONSTRUCTION FIELD ENGINEER

RESIDENT ENGINEER / TECHNICIAN

START & END DATES
OF CONSTRUCTION:

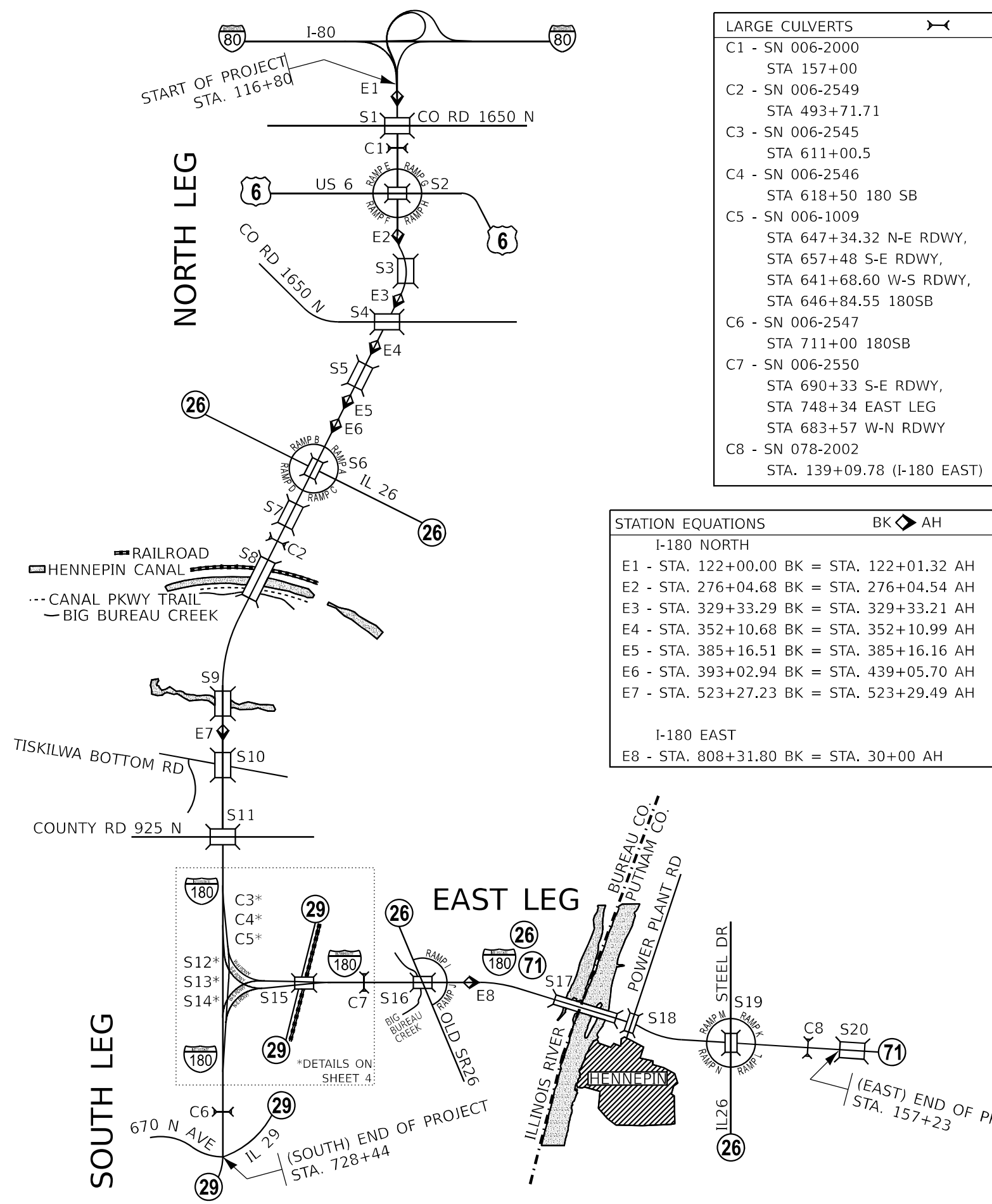
INSPECTORS:

**STATE OF ILLINOIS
DEPARTMENT OF TRANSPORTATION**

GENERAL NOTES

F.A.I. RTE.	SECTION	COUNTY	TOTAL SHEETS	SHEET NO.
180	(06-1,2, & 78-1)	VARIOUS*	10	2
BUREAU, PUTNAM			CONTRACT NO. 66P15	
ILLINOIS		FED. AID PROJECT		

SCALE: SHEET 1 OF 1 SHEETS STA. TO STA.



LARGE CULVERTS	
C1	SN 006-2000 STA 157+00
C2	SN 006-2549 STA 493+71.71
C3	SN 006-2545 STA 611+00.5
C4	SN 006-2546 STA 618+50 180 SB
C5	SN 006-1009 STA 647+34.32 N-E RDWY, STA 657+48 S-E RDWY, STA 641+68.60 W-S RDWY, STA 646+84.55 180SB
C6	SN 006-2547 STA 711+00 180SB
C7	SN 006-2550 STA 690+33 S-E RDWY, STA 748+34 EAST LEG STA 683+57 W-N RDWY
C8	SN 078-2002 STA. 139+09.78 (I-180 EAST)

STATION EQUATIONS	
I-180 NORTH	
E1	STA. 122+00.00 BK = STA. 122+01.32 AH
E2	STA. 276+04.68 BK = STA. 276+04.54 AH
E3	STA. 329+33.29 BK = STA. 329+33.21 AH
E4	STA. 352+10.68 BK = STA. 352+10.99 AH
E5	STA. 385+16.51 BK = STA. 385+16.16 AH
E6	STA. 393+02.94 BK = STA. 439+05.70 AH
E7	STA. 523+27.23 BK = STA. 523+29.49 AH
I-180 EAST	
E8	STA. 808+31.80 BK = STA. 30+00 AH

STRUCTURES & STRUCTURE OMISSIONS	
S1	SN 006-0125 - SIDEROAD OVERPASS STA. 152+94.23
S2	SN 006-0069 - INTERCHANGE OVERPASS STA. 205+82.65
S3	SN 006-0041 (SB), SN 006-0042 (NB) BRIDGES OVER EAST BUREAU CREEK NB OMISSION STA. 282+04.32 TO 284+40.69 SB* OMISSION STA. 81+54.74 TO 83+95.56 *ALIGNMENT SPLITS/REJOINS N & S OF STRUCTURES (IN THE SB DIRECTION)
S4	SN 006-0126 - SIDEROAD OVERPASS STA. 340+94.94
S5	SN 006-0043 (NB), SN 006-0044 (SB) BRIDGES OVER EAST BUREAU CREEK LT OMISSION STA. 357+00.76 TO 360+00.55 RT OMISSION STA. 358+00.97 TO 360+88.96
S6	SN 006-0045 (SB), SN 006-0046 (NB) MAINLINE OVERPASS OVER IL26 SB OMISSION STA. 458+81.61 TO 460+58.34 NB OMISSION STA. 459+01.39 TO 461+13.89
S7	SN 006-0047 (SB), SN 006-0048 (NB) BRIDGES OVER EAST BUREAU CREEK SB OMISSION STA. 483+14.50 TO 485+64.58 NB OMISSION STA. 483+14.50 TO 485+64.58
S8	SN 006-0049 (SB), SN 006-0050 (NB) BRIDGES OVER RR, HENNEPIN CANAL, CANAL PKWY TRAIL, & BIG BUREAU CREEK SB OMISSION STA. 496+61.29 TO 504+06.12 NB OMISSION STA. 495+97.71 TO 503+82.80
S9	SN 006-0051 (SB), SN 006-0052 (NB) BRIDGES OVER BUREAU CREEK SB OMISSION STA. 519+38.94 TO 523+45.06 NB OMISSION STA. 519+34.36 TO 523+49.64
S10	SN 006-0053 (SB), SN 006-0054 (NB) MAINLINE OVERPASS CROSSING TISKILWA BOTTOM RD / IL23 SB OMISSION STA. 526+28.23 TO 528+43.38 NB OMISSION STA. 526+69.62 TO 528+84.77

STRUCTURES & STRUCTURE OMISSIONS	
S11	SN 006-0128 - SIDEROAD OVERPASS STA. 592+55.90
S12*	SN 006-0055 - INTERCHANGE OVERPASS 'S-E RDWY' CROSSING OVER 'THRU LANE' OMISSION STA. 641+04.92 TO 644+73.33 STA. 642+65.96 ON 'THRU LANE'
S13*	SN 006-0085 - INTERCHANGE OVERPASS 'THRU LANE' CROSSING OVER 'W-S RDWY' OMISSION STA. 654+83.83 TO 658+56.50 STA. 655+90.56 ON 'W-S RDWY'
S14*	SN 006-0056 - INTERCHANGE OVERPASS 'S-E RDWY' CROSSING OVER 'W-S RDWY' OMISSION STA. 652+25.70 TO 654+59.25
S15	SN 006-0057 (EB), SN 006-0058 (WB) MAINLINE OVERPASS CROSSING RR & IL29/HIAWATHA PIONEER TRAIL EB OMISSION STA. 664+33.18 TO 668+26.24 WB OMISSION STA. 658+46.08 TO 662+29.98
S16	SN 006-0059 (WB), SN 006-0060 (EB) MAINLINE OVERPASS OVER IL26, BIG BUREAU CREEK WB OMISSION STA. 871+21.83 TO 875+10.68 EB OMISSION STA. 871+63.19 TO 875+63.91
S17	SN 078-0001 - GUDMUND "SONNY" JESSEN BRIDGE BRIDGE OVER ILLINOIS RIVER OMISSION STA. 49+86 TO 81+43
S18	SN 078-0022 - SIDEROAD OVERPASS STA. 91+01.44
S19	SN 078-0010 - INTERCHANGE OVERPASS STA. 124+85.08
S20	SN 038-0035 - MAINLINE BRIDGE BRIDGE OVER COFFEE CREEK STA. 157+23 (AT PROJECT LIMIT)

MODEL: Default
FILE NAME: c:\pwworking\cody.m.johnson@illinois.gov\d0968084\66P15 - Line Diagram.dgn

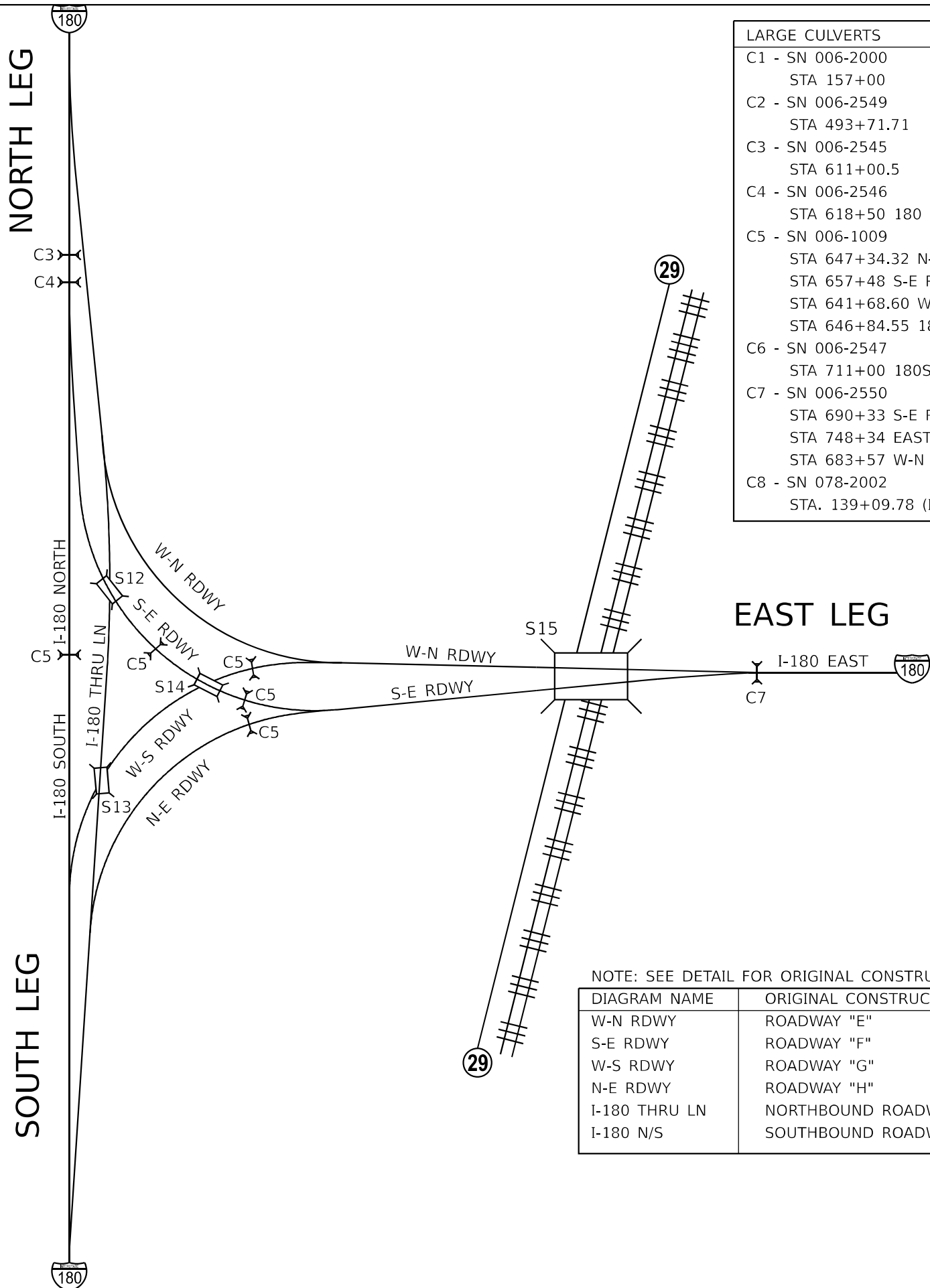
USER NAME = Cody.M.Johnson	DESIGNED -	REVISED -
PLOT SCALE = \$SCALE\$	DRAWN -	REVISED -
PLOT DATE = 3/27/2024	CHECKED -	REVISED -
	DATE -	REVISED -

**STATE OF ILLINOIS
DEPARTMENT OF TRANSPORTATION**

LINE DIAGRAM MAINLINE			
SCALE:	SHEET 1	OF 6 SHEETS	STA. TO STA.

F.A.I. RTE.	SECTION	COUNTY	TOTAL SHEETS	SHEET NO.
180	(06-1,2 & 78-1)	VARIOUS*	10	3
BUREAU, PUTNAM		CONTRACT NO. 66P15		
		ILLINOIS FED. AID PROJECT		

MODEL: Default
 FILE NAME: c:\pwworking\cody.m.johnson@illroads.gov\d0968084\66P15 - Line Diagram.dgn



LARGE CULVERTS	
C1	SN 006-2000 STA 157+00
C2	SN 006-2549 STA 493+71.71
C3	SN 006-2545 STA 611+00.5
C4	SN 006-2546 STA 618+50 180 SB
C5	SN 006-1009 STA 647+34.32 N-E RDWY, STA 657+48 S-E RDWY, STA 641+68.60 W-S RDWY, STA 646+84.55 180SB
C6	SN 006-2547 STA 711+00 180SB
C7	SN 006-2550 STA 690+33 S-E RDWY, STA 748+34 EAST LEG STA 683+57 W-N RDWY
C8	SN 078-2002 STA. 139+09.78 (I-180 EAST)

STRUCTURES & STRUCTURE OMISSIONS	
S1	SN 006-0125 - SIDEROAD OVERPASS STA. 152+94.23
S2	SN 006-0069 - INTERCHANGE OVERPASS STA. 205+82.65
S3	SN 006-0041 (SB), SN 006-0042 (NB) BRIDGES OVER EAST BUREAU CREEK NB OMISSION STA. 282+04.32 TO 284+40.69 SB* OMISSION STA. 81+54.74 TO 83+95.56 *ALIGNMENT SPLITS/REJOINS N & S OF STRUCTURES (IN THE SB DIRECTION)
S4	SN 006-0126 - SIDEROAD OVERPASS STA. 340+94.94
S5	SN 006-0043 (NB), SN 006-0044 (SB) BRIDGES OVER EAST BUREAU CREEK LT OMISSION STA. 357+00.76 TO 360+00.55 RT OMISSION STA. 358+00.97 TO 360+88.96
S6	SN 006-0045 (SB), SN 006-0046 (NB) MAINLINE OVERPASS OVER IL26 SB OMISSION STA. 458+81.61 TO 460+58.34 NB OMISSION STA. 459+01.39 TO 461+13.89
S7	SN 006-0047 (SB), SN 006-0048 (NB) BRIDGES OVER EAST BUREAU CREEK SB OMISSION STA. 483+14.50 TO 485+64.58 NB OMISSION STA. 483+14.50 TO 485+64.58
S8	SN 006-0049 (SB), SN 006-0050 (NB) BRIDGES OVER RR, HENNEPIN CANAL, CANAL PKWY TRAIL, & BIG BUREAU CREEK SB OMISSION STA. 496+61.29 TO 504+06.12 NB OMISSION STA. 495+97.71 TO 503+82.80
S9	SN 006-0051 (SB), SN 006-0052 (NB) BRIDGES OVER BUREAU CREEK SB OMISSION STA. 519+38.94 TO 523+45.06 NB OMISSION STA. 519+34.36 TO 523+49.64
S10	SN 006-0053 (SB), SN 006-0054 (NB) MAINLINE OVERPASS CROSSING TISKILWA BOTTOM RD / IL23 SB OMISSION STA. 526+28.23 TO 528+43.38 NB OMISSION STA. 526+69.62 TO 528+84.77

STRUCTURES & STRUCTURE OMISSIONS	
S11	SN 006-0128 - SIDEROAD OVERPASS STA. 592+55.90
S12*	SN 006-0055 - INTERCHANGE OVERPASS 'S-E RDWY' CROSSING OVER 'THRU LANE' OMISSION STA. 641+04.92 TO 644+73.33 STA. 642+65.96 ON 'THRU LANE'
S13*	SN 006-0085 - INTERCHANGE OVERPASS 'THRU LANE' CROSSING OVER 'W-S RDWY' OMISSION STA. 654+83.83 TO 658+56.50 STA. 655+90.56 ON 'W-S RDWY'
S14*	SN 006-0056 - INTERCHANGE OVERPASS 'S-E RDWY' CROSSING OVER 'W-S RDWY' OMISSION STA. 652+25.70 TO 654+59.25
S15	SN 006-0057 (EB), SN 006-0058 (WB) MAINLINE OVERPASS CROSSING RR & IL29/HIAWATHA PIONEER TRAIL EB OMISSION STA. 664+33.18 TO 668+26.24 WB OMISSION STA. 658+46.08 TO 662+29.98
S16	SN 006-0059 (WB), SN 006-0060 (EB) MAINLINE OVERPASS OVER IL26, BIG BUREAU CREEK WB OMISSION STA. 871+21.83 TO 875+10.68 EB OMISSION STA. 871+63.19 TO 875+63.91
S17	SN 078-0001 - GUDMUND "SONNY" JESSEN BRIDGE BRIDGE OVER ILLINOIS RIVER OMISSION STA. 49+86 TO 81+43
S18	SN 078-0022 - SIDEROAD OVERPASS STA. 91+01.44
S19	SN 078-0010 - INTERCHANGE OVERPASS STA. 124+85.08
S20	SN 038-0035 - MAINLINE BRIDGE BRIDGE OVER COFFEE CREEK STA. 157+23 (AT PROJECT LIMIT)

NOTE: SEE DETAIL FOR ORIGINAL CONSTRUCTION INFO

DIAGRAM NAME	ORIGINAL CONSTRUCTION
W-N RDWY	ROADWAY "E"
S-E RDWY	ROADWAY "F"
W-S RDWY	ROADWAY "G"
N-E RDWY	ROADWAY "H"
I-180 THRU LN	NORTHBOUND ROADWAY
I-180 N/S	SOUTHBOUND ROADWAY

STATE OF ILLINOIS
 DEPARTMENT OF TRANSPORTATION

LINE DIAGRAM
 I-180 INTERCHANGE

USER NAME = Cody.M.Johnson	DESIGNED -	REVISED -
	DRAWN -	REVISED -
PLOT SCALE = \$SCALES	CHECKED -	REVISED -
PLOT DATE = 3/27/2024	DATE -	REVISED -

SCALE: SHEET 1 OF 6 SHEETS STA. TO STA.

F.A.I. RTE.	SECTION	COUNTY	TOTAL SHEETS	SHEET NO.
180	(06-1,2, & 78-1)	VARIOUS*	10	4
BUREAU, PUTNAM		CONTRACT NO. 66P15		
ILLINOIS		FED. AID PROJECT		

100% STATE

CONSTRUCTION CODE		
BUREAU COUNTY	PUTNAM I180	PUTNAM IL71
ROADWAY 0005 RURAL	ROADWAY 0005 RURAL	ROADWAY 0005 RURAL

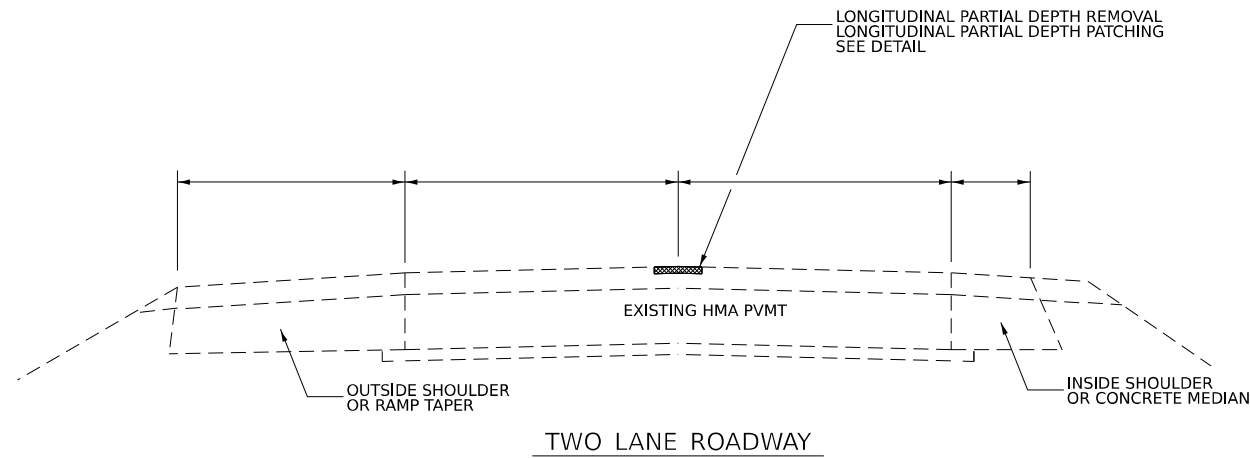
CODE NO.	ITEM	UNIT	TOTAL QUANTITY	ROADWAY 0005 RURAL	ROADWAY 0005 RURAL	ROADWAY 0005 RURAL
40600290	BITUMINOUS MATERIALS (TACK COAT)	POUND	1734	1574	98	62
40600400	MIXTURE FOR CRACKS, JOINTS, AND FLANGEWAYS	TON	10.4	9.4	0.6	0.4
67000400	ENGINEER'S FIELD OFFICE, TYPE A	CAL MO	2	1.8	0.1	0.1
67100100	MOBILIZATION	L SUM	1	0.8	0.1	0.1
70100700	TRAFFIC CONTROL AND PROTECTION, STANDARD 701406	L SUM	1	0.8	0.1	0.1
70300100	SHORT TERM PAVEMENT MARKING	FOOT	15418	13991	869	558
70303130	TEMPORARY PAVEMENT MARKING - LINE 6" - MODIFIED URETHANE	FOOT	38507	34940	2172	1395
* 78004630	PREFORMED PLASTIC PAVEMENT MARKING, TYPE D - STANDARD - LINE 6"	FOOT	38507	34940	2172	1395
* 78011035	GROOVING FOR RECESSED PAVEMENT MARKING 7"	FOOT	38507	34940	2172	1395
* 78100100	RAISED REFLECTIVE PAVEMENT MARKER	EACH	1911	1734	108	69
78300200	RAISED REFLECTIVE PAVEMENT MARKER REMOVAL	EACH	1911	1734	108	69
X4405020	LONGITUDINAL PARTIAL DEPTH REMOVAL 2"	FOOT	153956	139695	8685	5576
X4420900	LONGITUDINAL PARTIAL DEPTH PATCHING	TON	5751	5218	324	209

*= SPECIALTY ITEM

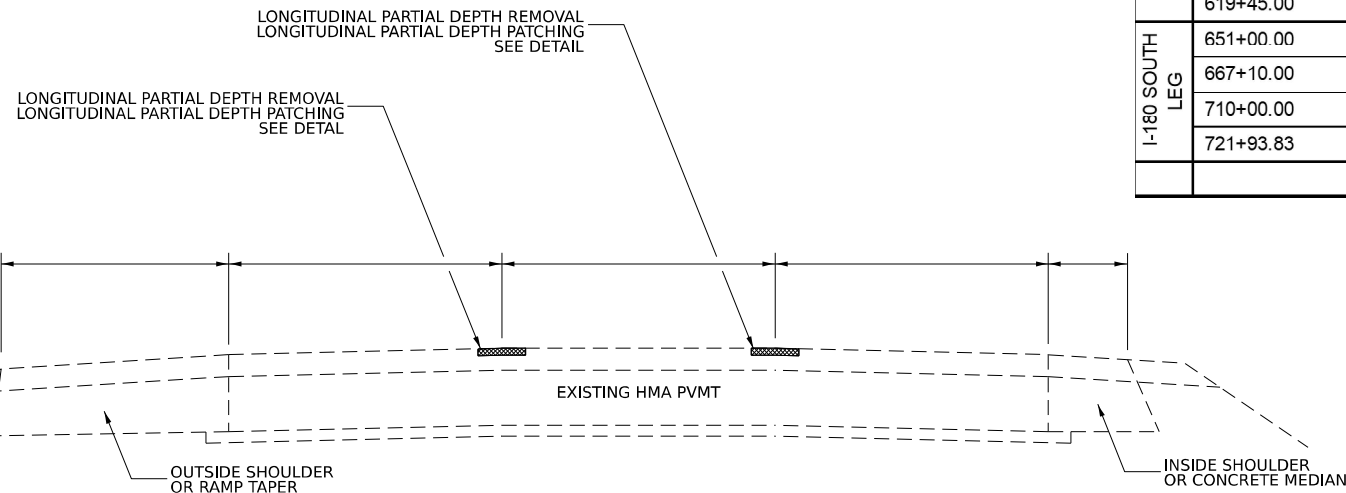
MODEL: Default
FILE NAME: c:\p\work\pav\cody.m.johnson@illroads.gov\066808466P15 - Summary of Quantities.dgn

USER NAME = Cody.M.Johnson	DESIGNED -	REVISED -	STATE OF ILLINOIS DEPARTMENT OF TRANSPORTATION	SUMMARY OF QUANTITIES				F.A.I. RTE.	SECTION	COUNTY	TOTAL SHEETS	SHEET NO.		
PLOT SCALE = \$SCALE\$	DRAWN -	REVISED -		SCALE:	SHEET	OF	SHEETS	STA.	TO STA.	180	(06-1,2, & 78-1)	VARIOUS*	10	5
PLOT DATE = 3/28/2024	CHECKED -	REVISED -		BUREAU, PUTNAM	CONTRACT NO. 66P15									
DATE -	REVISED -			ILLINOIS FED. AID PROJECT										

LANE COUNTS AND STATION BREAKPOINTS



TWO LANE ROADWAY



THREE LANE ROADWAY

ALIGNMENT	LOCATION INFORMATION			LENGTH	ALIGNMENT	LOCATION INFORMATION CONTINUED			LENGTH				
	STATION	TO	STATION	DESCRIPTION		FOOT	STATION	TO	STATION	DESCRIPTION	FOOT		
I-180 NORTH LEG	116+80.00	TO	122+00.00	BK	2 LANES NB & SB	520	597+05.00	TO	642+65.96	2 NB LANES	4560.96		
	122+01.32	AH	TO	152+94.23	2 LANES NB & SB	3092.91	642+65.96	TO	654+83.83	2 NB LANES	1217.87		
	152+94.23	TO	205+82.65		2 LANES NB & SB	5288.42	654+83.83	TO	658+56.50	SN 006-0085 OMISSION	372.67		
	205+82.65	TO	276+04.68	BK	2 LANES NB & SB	7022.03	658+56.50	TO	710+26.50	2 NB LANES	5170		
	276+04.54	AH	TO	282+04.32	2 LANES NB & SB	599.78	640+78.96	TO	664+33.18	2 EB LANES	2354.22		
	282+04.32	TO	284+40.69		2 LANES NB & SB	236.37	664+33.18	TO	668+26.24	SN 006-0057 OMISSION	393.06		
	284+40.69	TO	329+33.29	BK	2 LANES NB & SB	4492.6	668+26.24	TO	670+20.00	2 EB LANES	193.76		
	329+33.21	AH	TO	352+10.68	BK	2 LANES NB & SB	2277.47	617+95.00	TO	641+04.92	2 EB LANES	2309.92	
	352+10.99	AH	TO	385+16.51	BK	2 LANES NB & SB	3305.52	641+04.92	TO	644+73.33	SN 006-0055 OMISSION	368.41	
	385+16.16	AH	TO	393+02.94	BK	2 LANES NB & SB	786.78	644+73.33	TO	652+25.70	2 EB LANES	752.37	
	439+05.70	AH	TO	458+81.61		2 LANES NB & SB	1975.91	652+25.70	TO	654+59.25	SN 006-0056 OMISSION	233.55	
	458+81.61	TO	459+01.39		SN 006-0045 OMISSION	19.78	654+59.25	TO	664+33.18	2 EB LANES	973.93		
	459+01.39	TO	460+94.11		SN 006-0045/6 OMISSION	192.72	664+33.18	TO	668+26.24	SN 006-0057 OMISSION	393.06		
	460+94.11	TO	461+13.89		SN 006-0046 OMISSION	19.78	668+26.24	TO	695+73.18	2 EB LANES	2746.94		
	461+13.89	TO	479+30.19		2 LANES NB & SB	1816.3	628+98.33	TO	658+46.08	2 NB LANES	2947.75		
	479+30.19	TO	480+94.41		2 LANES NB & SB	164.22	658+46.08	TO	662+29.98	SN 006-0058 OMISSION	383.9		
	480+94.41	TO	483+14.50		2 LANES NB & SB	220.09	662+29.98	TO	688+96.14	2 NB LANES	2666.16		
	483+14.50	TO	485+64.58		SN 006-0047/8 OMISSION	250.08	640+78.96	TO	655+90.56	2 SB LANES	1511.6		
	485+64.58	TO	495+97.71		2 LANES NB & SB	1033.13	655+90.56	TO	658+46.08	2 SB LANES	255.52		
	495+97.71	TO	496+61.29		SN 006-0049/50 OMISSION	63.58	658+46.08	TO	662+29.98	SN 006-0058 OMISSION	383.9		
	496+61.29	TO	503+82.80		SN 006-0049/50 OMISSION	721.51	662+29.98	TO	670+20.00	2 SB LANES	790.02		
	503+82.80	TO	504+06.12		SN 006-0049/50 OMISSION	23.32	753+73.07	TO	771+21.83	2 LANES EB & WB	1748.76		
	504+06.12	TO	505+40.00		2 LANES NB & SB	133.88	771+21.83	TO	771+63.19	SN 006-0059 OMISSION	41.36		
	505+40.00	TO	505+50.00		NB OMISSION	10	771+63.19	TO	775+10.68	SN 006-0059/60 OMISSION	347.49		
	505+50.00	TO	523+27.23	BK	OMISSION	1777.23	775+10.68	TO	775+63.91	SN 006-0060 OMISSION	53.23		
	523+29.49	AH	TO	535+00.00		OMISSION	1170.51	775+63.91	TO	808+31.80	BK	2 LANES EB & WB	3267.89
	535+00.00	TO	592+55.90		2 LANES NB & SB	5755.9	30+00.00	AH	TO	49+86.00		2 LANES EB & WB	1986
	592+55.90	TO	597+05.00		3 SB & 2 NB LANES	449.1	BUREAU COUNTY SUBTOTAL 2			38424.3			
	597+05.00	TO	617+95.00		3 SB LANES	2090	49+86.00	TO	81+43.00	"GUDMUND SONNY JESS" BRIDGE	3157		
	617+95.00	TO	619+45.00		2 SB LANES	150	81+43.00	TO	91+01.44	2 LANES EB & WB	958.44		
	619+45.00	TO	651+00.00		2 SB LANES	3155	91+01.44	TO	124+85.08	2 LANES EB & WB	3383.64		
	BUREAU COUNTY SUBTOTAL 1						56557.92	PUTNAM COUNTY I-180 SUBTOTAL			7499.08		
	I-180 SOUTH LEG	651+00.00	TO	667+10.00		2 SB LANES	1610	124+85.08	TO	148+23.00	2 LANES EB & WB	2337.92	
667+10.00		TO	710+00.00		2 SB LANES	4290	148+23.00	TO	152+73.00	2 LANES EB, 1 WB	450		
710+00.00		TO	721+93.83		1 SB & 2 NB LANES	1193.83	152+73.00	TO	157+23.00	2 LANE HIGHWAY	450		
721+93.83		TO	728+44.00		3 SB & 2 NB LANES	650.17	PUTNAM COUNTY IL 71 SUBTOTAL			3237.92			

MODEL: Default
FILE NAME: c:\pwworking\cdody.m.johnson@illroads.gov\d0968084\66P15 - Line Diagram.dgn

USER NAME = Cody.M.Johnson	DESIGNED -	REVISED -
DRAWN -	REVISOR -	
PLOT SCALE = \$SCALE\$	CHECKED -	REVISED -
PLOT DATE = 3/4/2024	DATE -	REVISED -

**STATE OF ILLINOIS
DEPARTMENT OF TRANSPORTATION**

TYPICAL SECTIONS

SCALE: SHEET 1 OF 6 SHEETS STA. TO STA.

F.A.I. RTE.	SECTION	COUNTY	TOTAL SHEETS	SHEET NO.
180	(06-1,2, & 78-1)I	VARIOUS*	10	6
BUREAU, PUTNAM		CONTRACT NO. 66P15		
		ILLINOIS FED. AID PROJECT		

MAINLINE SCHEDULE (1/2)

ALIGNMENT	LOCATION INFORMATION		CENTER LINES	LENGTH	LONG PARTIAL	LONG PARTIAL	BIT MAT	MIX FOR	PREF PL PM	TEMP PVT MK	GRV RCSD	SHORT TERM	RAISED REFL	RAISED REFL		
					DEPTH REM 2"	DEPTH PATCH	TACK COAT	CR, JTS FLNGWYS	TY D 6"	MU 6"	PVT	PAVT	PAVT	PVT MK		
	STATION	TO STATION	DESCRIPTION	EACH	FOOT	FOOT	TON	POUND	TON	FOOT	FOOT	FOOT	FOOT	EACH	EACH	
I-180 NORTH LEG	116+80.00	TO 122+00.00 BK	2 LANES NB & SB	2	520	1040	38.9	12	0.07	260	260	260	104	12	12	
	122+01.32	AH TO 152+94.23	2 LANES NB & SB	2	3092.91	6186	231	69	0.41	1547	1547	1547	619	78	78	
	152+94.23	TO 205+82.65	2 LANES NB & SB	2	5288.42	10577	394.9	118	0.71	2645	2645	2645	1058	132	132	
	205+82.65	TO 276+04.68 BK	2 LANES NB & SB	2	7022.03	14045	524.4	157	0.94	3512	3512	3512	1405	176	176	
	276+04.54	AH TO 282+04.32	2 LANES NB & SB	2	599.78	1200	44.8	14	0.08	300	300	300	120	14	14	
	282+04.32	TO 284+40.69	2 LANES NB & SB	2	236.37	473	17.7	6	0.03	119	119	119	48	6	6	
	284+40.69	TO 329+33.29 BK	2 LANES NB & SB	2	4492.6	8986	335.5	100	0.6	2247	2247	2247	899	112	112	
	329+33.21	AH TO 352+10.68 BK	2 LANES NB & SB	2	2277.47	4555	170.1	51	0.3	1139	1139	1139	456	58	58	
	352+10.99	AH TO 385+16.51 BK	2 LANES NB & SB	2	3305.52	6612	246.9	74	0.44	1653	1653	1653	662	82	82	
	385+16.16	AH TO 393+02.94 BK	2 LANES NB & SB	2	786.78	1574	58.8	18	0.1	394	394	394	158	20	20	
	439+05.70	AH TO 458+81.61	2 LANES NB & SB	2	1975.91	3952	147.6	44	0.26	988	988	988	396	48	48	
	458+81.61	TO 459+01.39	SN 006-0045 OMISSION	1	19.78	20	0.8	1	0	5	5	5	2	1	1	
	459+01.39	TO 460+94.11	SN 006-0045/6 OMISSION	0	192.72	0	0	0	0	0	0	0	0	0	0	0
	460+94.11	TO 461+13.89	SN 006-0046 OMISSION	1	19.78	20	0.8	1	0	5	5	5	2	0	0	0
	461+13.89	TO 479+30.19	2 LANES NB & SB	2	1816.3	3633	135.7	41	0.24	909	909	909	364	44	44	
	479+30.19	TO 480+94.41	2 LANES NB & SB	2	164.22	329	12.3	4	0.02	83	83	83	33	6	6	
	480+94.41	TO 483+14.50	2 LANES NB & SB	2	220.09	441	16.5	5	0.03	111	111	111	45	4	4	
	483+14.50	TO 485+64.58	SN 006-0047/8 OMISSION	1	250.08	251	9.4	3	0.02	63	63	63	26	3	3	
	485+64.58	TO 495+97.71	2 LANES NB & SB	2	1033.13	2067	77.2	23	0.14	517	517	517	207	26	26	
	495+97.71	TO 496+61.29	SN 006-0049/50 OMISSION	1	63.58	64	2.4	1	0	16	16	16	7	1	1	
	496+61.29	TO 503+82.80	SN 006-0049/50 OMISSION	2	721.51	1444	53.9	17	0.1	361	361	361	145	18	18	
	503+82.80	TO 504+06.12	SN 006-0049/50 OMISSION	0	23.32	0	0	0	0	0	0	0	0	0	0	0
	504+06.12	TO 505+40.00	2 LANES NB & SB	2	133.88	268	10	3	0.02	67	67	67	27	2	2	2
	505+40.00	TO 505+50.00	NB OMISSION	1	10	10	0.4	1	0	3	3	3	1	0	0	0
	505+50.00	TO 523+27.23 BK	OMISSION	0	1777.23	0	0	0	0	0	0	0	0	0	0	0
	523+29.49	AH TO 535+00.00	OMISSION	0	1170.51	0	0	0	0	0	0	0	0	0	0	0
535+00.00	TO 592+55.90	2 LANES NB & SB	2	5755.9	11512	429.8	128	0.77	2878	2878	2878	1152	142	142	142	
592+55.90	TO 597+05.00	3 SB & 2 NB LANES	3	449.1	1348	50.3	15	0.09	337	337	337	135	18	18	18	
597+05.00	TO 617+95.00	3 SB LANES	2	2090	4180	156.1	47	0.28	1045	1045	1045	418	52	52	52	
617+95.00	TO 619+45.00	2 SB LANES	1	150	150	5.6	2	0.01	38	38	38	15	2	2	2	
619+45.00	TO 651+00.00	2 SB LANES	1	3155	3155	117.8	36	0.21	789	789	789	316	40	40	40	
I-180 SOUTH LEG	651+00.00	TO 667+10.00	2 SB LANES	1	1610	1610	60.2	18	0.11	403	403	403	161	20	20	
	667+10.00	TO 710+00.00	2 SB LANES	1	4290	4290	160.2	48	0.29	1073	1073	1073	429	53	53	
	710+00.00	TO 721+93.83	1 SB & 2 NB LANES	1	1193.83	1194	44.6	14	0.08	299	299	299	120	15	15	
	721+93.83	TO 728+44.00	3 SB & 2 NB LANES	3	650.17	1951	72.9	22	0.13	488	488	488	196	24	24	
BUREAU COUNTY SUBTOTAL 1						97137	3628	1093	6.5	24294	24294	24294	9726	1209	1209	

MODEL: Default
FILE NAME: c:\pwworking\billings\pc\096808\66P15 - Schedules.dgn

USER NAME = Cody.M.Johnson	DESIGNED -	REVISED -
DRAWN -	REVISIONS -	
PLOT SCALE = \$SCALE\$	CHECKED -	REVISED -
PLOT DATE = 3/27/2024	DATE -	REVISED -

**STATE OF ILLINOIS
DEPARTMENT OF TRANSPORTATION**

SCHEDULES

SCALE: SHEET OF SHEETS STA. TO STA.

F.A.I. RTE.	SECTION	COUNTY	TOTAL SHEETS	SHEET NO.
180	(06-1,2, & 78-1)	VARIOUS*	10	7
BUREAU, PUTNAM		CONTRACT NO. 66P15		
ILLINOIS		FED. AID PROJECT		

MAINLINE SCHEDULE (2/2)

ALIGNMENT	LOCATION INFORMATION			CENTER LINES	LENGTH	LONG PARTIAL	LONG PARTIAL	BIT MAT	MIX FOR	PREF PL PM	TEMP PVT MK	GRV RCSD	SHORT TERM	RAISED REFL	RAISED REFL	
						DEPTH REM 2"	DEPTH PATCH	TACK COAT	CR, JTS FLNGWYS	TY D 6"	MU 6"	PVT	PAVT	PAVT	PAVT	PVT MK
	STATION	TO STATION	DESCRIPTION	EACH	FOOT	FOOT	TON	POUND	TON	FOOT	FOOT	FOOT	FOOT	EACH	EACH	
I-180 THRU LANE	597+05.00	TO 642+65.96	2 NB LANES	1	4560.96	4561	170.3	51	0.3	1141	1141	1141	457	57	57	
	642+65.96	TO 654+83.83	2 NB LANES	1	1217.87	1218	45.5	14	0.08	305	305	305	122	15	15	
	654+83.83	TO 658+56.50	SN 006-0085 OMISSION	0	372.67	0	0	0	0	0	0	0	0	0	0	
	658+56.50	TO 710+26.50	2 NB LANES	1	5170	5170	193.1	58	0.34	1293	1293	1293	517	64	64	
N-E RDWY	640+78.96	TO 664+33.18	2 EB LANES	1	2354.22	2355	87.9	27	0.16	589	589	589	236	29	29	
	664+33.18	TO 668+26.24	SN 006-0057 OMISSION	0	393.06	0	0	0	0	0	0	0	0	0	0	
	668+26.24	TO 670+20.00	2 EB LANES	1	193.76	194	7.3	3	0.01	49	49	49	20	2	2	
S-E RDWY	617+95.00	TO 641+04.92	2 EB LANES	1	2309.92	2310	86.3	26	0.15	578	578	578	231	28	28	
	641+04.92	TO 644+73.33	SN 006-0055 OMISSION	0	368.41	0	0	0	0	0	0	0	0	0	0	
	644+73.33	TO 652+25.70	2 EB LANES	1	752.37	753	28.1	9	0.05	189	189	189	76	9	9	
	652+25.70	TO 654+59.25	SN 006-0056 OMISSION	0	233.55	0	0	0	0	0	0	0	0	0	0	
	654+59.25	TO 664+33.18	2 EB LANES	1	973.93	974	36.4	11	0.06	244	244	244	98	12	12	
	664+33.18	TO 668+26.24	SN 006-0057 OMISSION	0	393.06	0	0	0	0	0	0	0	0	0	0	
W-N RDWY	628+98.33	TO 658+46.08	2 NB LANES	1	2947.75	2948	110.1	33	0.2	737	737	737	295	36	36	
	658+46.08	TO 662+29.98	SN 006-0058 OMISSION	0	383.9	0	0	0	0	0	0	0	0	0	0	
	662+29.98	TO 688+96.14	2 NB LANES	1	2666.16	2667	99.6	30	0.18	667	667	667	267	33	33	
W-S RDWY	640+78.96	TO 655+90.56	2 SB LANES	1	1511.6	1512	56.5	17	0.1	378	378	378	152	18	18	
	655+90.56	TO 658+46.08	2 SB LANES	1	255.52	256	9.6	3	0.02	64	64	64	26	4	4	
	658+46.08	TO 662+29.98	SN 006-0058 OMISSION	0	383.9	0	0	0	0	0	0	0	0	0	0	
	662+29.98	TO 670+20.00	2 SB LANES	1	790.02	791	29.5	9	0.05	198	198	198	80	9	9	
I-180 EAST LEG	753+73.07	TO 771+21.83	2 LANES EB & WB	2	1748.76	3498	130.6	39	0.23	875	875	875	350	42	42	
	771+21.83	TO 771+63.19	SN 006-0059 OMISSION	1	41.36	42	1.6	1	0	11	11	11	5	1	1	
	771+63.19	TO 775+10.68	SN 006-0059/60 OMISSION	0	347.49	0	0	0	0	0	0	0	0	0	0	
	775+10.68	TO 775+63.91	SN 006-0060 OMISSION	1	53.23	54	2	1	0	14	14	14	6	0	0	
	775+63.91	TO 808+31.80 BK	2 LANES EB & WB	2	3267.89	6536	244.1	73	0.44	1634	1634	1634	654	82	82	
30+00.00 AH	TO 49+86.00	2 LANES EB & WB	2	1986	3972	148.3	45	0.26	993	993	993	398	50	50		
BUREAU COUNTY SUBTOTAL 2						42558	1590	481	2.9	10646	10646	10646	4265	525	525	
I-180 EAST LEG	49+86.00	TO 81+43.00	"GUDMUND SONNY JESS" BRIDGE OMISSION	0	3157	0	0	0	0	0	0	0	0	0	0	
	81+43.00	TO 91+01.44	2 LANES EB & WB	2	958.44	1917	71.6	22	0.13	480	480	480	192	22	22	
	91+01.44	TO 124+85.08	2 LANES EB & WB	2	3383.64	6768	252.7	76	0.45	1692	1692	1692	677	86	86	
	PUTNAM COUNTY I-180 SUBTOTAL						8685	325	98	0.6	2172	2172	2172	869	108	108
	124+85.08	TO 148+23.00	2 LANES EB & WB	2	2337.92	4676	174.6	52	0.31	1169	1169	1169	468	58	58	
	148+23.00	TO 152+73.00	2 LANES EB, 1 WB	1	450	450	16.8	5	0.03	113	113	113	45	6	6	
152+73.00	TO 157+23.00	2 LANE HIGHWAY	1	450	450	16.8	5	0.03	113	113	113	45	5	5		
PUTNAM COUNTY IL 71 SUBTOTAL						5576	209	62	0.4	1395	1395	1395	558	69	69	
GRAND TOTAL						153956	5752	1734	10.4	38507	38507	38507	15418	1911	1911	

MODEL: Default
 FILE NAME: c:\pwworking\cdoddy.m.johnson@illinois.gov\d0968084\66P15 - Schedules.dgn

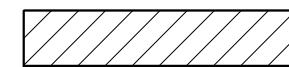
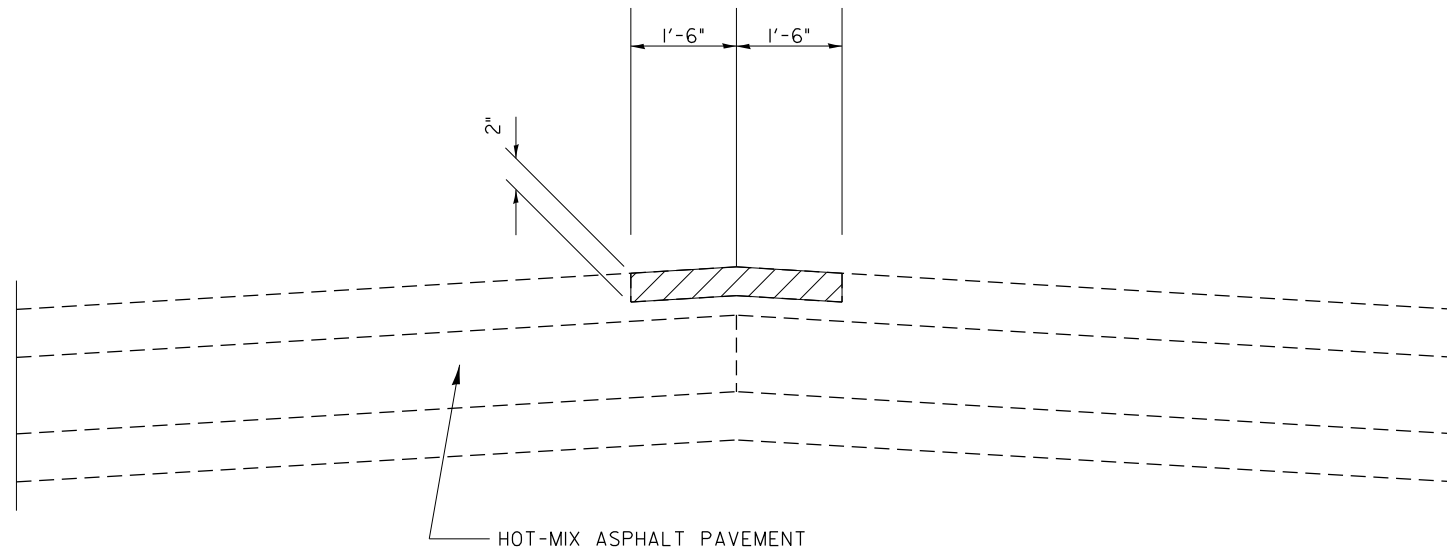
USER NAME = Cody.M.Johnson	DESIGNED -	REVISED -	
	DRAWN -	REVISED -	
PLOT SCALE = \$SCALE\$	CHECKED -	REVISED -	
PLOT DATE = 3/27/2024	DATE -	REVISED -	

**STATE OF ILLINOIS
DEPARTMENT OF TRANSPORTATION**

SCHEDULES			
SCALE:	SHEET	OF SHEETS	STA. TO STA.

F.A.I. RTE.	SECTION	COUNTY	TOTAL SHEETS	SHEET NO.
180	(06-1,2, & 78-1)	VARIOUS*	10	8
BUREAU, PUTNAM			CONTRACT NO. 66P15	
ILLINOIS		FED. AID PROJECT		

**BOUNDARY
BETWEEN
LANES**

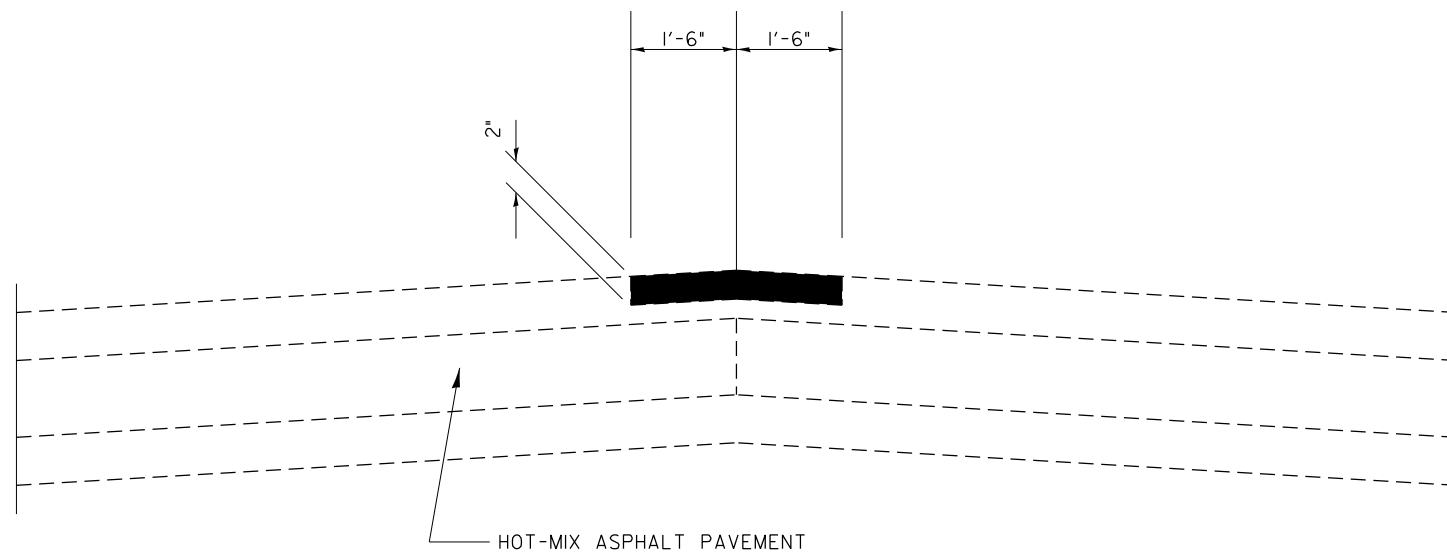


LONGITUDINAL PARTIAL DEPTH REMOVAL



LONGITUDINAL PARTIAL DEPTH PATCHING

**BOUNDARY
BETWEEN
LANES**



NOTES

- 1) RESURFACING SHALL BE LOCATED AT THE CENTERLINE OF PAVEMENT JOINT. ACTUAL LOCATIONS SHALL BE FIELD DETERMINED BY THE ENGINEER PRIOR TO THE CONTRACTOR BEGINNING HIS/HER CONSTRUCTION OPERATIONS.
- 2) OFFSET OF THE PERMANENT CENTERLINE PAVEMENT STRIPING SHALL BE FIELD DETERMINED BY THE ENGINEER. SHORT TERM AND/OR TEMPORARY PAVEMENT MARKING SHALL BE PLACED AT THE SAME LOCATION AS THE PROPOSED PERMANENT PAVEMENT MARKING.
- 3) AFTER MILLING, AND PRIOR TO PLACING THE HMA MIXTURE, AREAS WITH SIGNIFICANT ADDITIONAL DETERIORATION ALONG THE CENTERLINE SHALL BE PREFILLED WITH MIXTURES FOR CRACK, JOINTS AND FLANGWAYS AND COMPACTED TO THE SATISFACTION OF THE ENGINEER

**STATE OF ILLINOIS
DEPARTMENT OF TRANSPORTATION**

DETAILS

SCALE: SHEET OF SHEETS STA. TO STA.

F.A.I. RTE.	SECTION	COUNTY	TOTAL SHEETS	SHEET NO.
180	(06-1,2, & 78-1)	VARIOUS*	10	9
BUREAU, PUTNAM			CONTRACT NO. 66P15	
ILLINOIS		FED. AID PROJECT		

MODEL: Default
FILE NAME: c:\p\work\pav\cody.m.johnson@illinois.gov\066P15 - Details.dgn

USER NAME = Cody.M.Johnson	DESIGNED -	REVISED -
	DRAWN -	REVISED -
PLOT SCALE = \$SCALE\$	CHECKED -	REVISED -
PLOT DATE = 3/5/2024	DATE -	REVISED -

FEDERAL-AID ROUTE No.	SECTION	COUNTY	TOTAL SHEETS	SHEET No.
F.A.I. 180	06-2,3	BUREAU		356
FED. ROAD DIV. No. 4 ILLINOIS PROJECT				

FOR INFORMATION ONLY

SB-1			E-1			S-1		
PI	624+52.779	6	PI	647+16.896	32	PI	877+21.96	91
Δ	0°-40'-37.313"		Δ	82°-00'-00"		Δ	21°-13'-35"	
D	0°-04'-00"		D	3°-00'-00"		D	1°-30'-00"	
R	85943.669'		R	1909.859'		R	3810.72'	
T	507.779'		T	1660.215'		T	715.75'	
L	1015.547'		L	2733.333'		L	1415.09'	
E	1.500'		E	620.729'		E	66.48'	
PC	619+45.000	5	PC	630+56.681	31	PC	870+06.21	90
PT	629+60.547	7	PT	657+90.014	33	PT	884+21.30	92

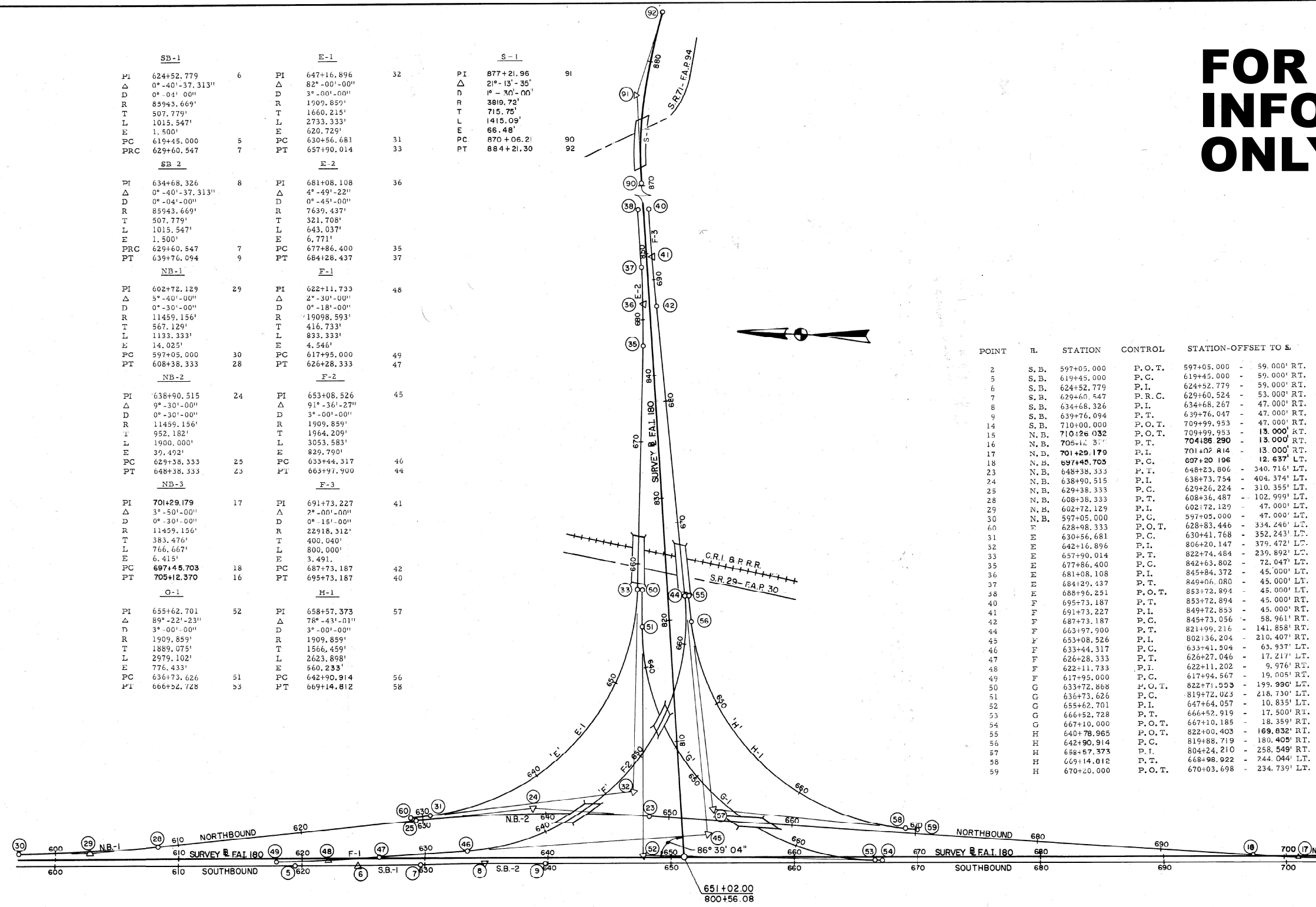
SB-2			E-2		
PI	634+68.326	8	PI	681+08.108	36
Δ	0°-40'-37.313"		Δ	4°-49'-22"	
D	0°-04'-00"		D	0°-45'-00"	
R	85943.669'		R	7639.437'	
T	507.779'		T	321.708'	
L	1015.547'		L	643.037'	
E	1.500'		E	6.771'	
PC	629+60.547	7	PC	677+86.400	35
PT	639+76.094	9	PT	684+28.437	37

NB-1			F-1		
PI	602+72.129	29	PI	622+11.733	48
Δ	5°-40'-00"		Δ	2°-30'-00"	
D	0°-30'-00"		D	0°-18'-00"	
R	11459.156'		R	19098.593'	
T	567.129'		T	416.733'	
L	1133.333'		L	833.333'	
E	14.025'		E	4.546'	
PC	597+05.000	30	PC	617+95.000	49
PT	608+38.333	28	PT	626+28.333	47

NB-2			F-2		
PI	638+90.515	24	PI	653+08.526	45
Δ	9°-30'-00"		Δ	91°-36'-27"	
D	0°-30'-00"		D	3°-00'-00"	
R	11459.156'		R	1909.859'	
T	952.182'		T	1964.209'	
L	1900.000'		L	3053.583'	
E	39.492'		E	829.790'	
PC	629+38.333	25	PC	633+44.317	46
PT	648+38.333	23	PT	663+97.900	44

NB-3			F-3		
PI	701+29.179	17	PI	691+73.227	41
Δ	3°-50'-00"		Δ	2°-00'-00"	
D	0°-30'-00"		D	0°-15'-00"	
R	11459.156'		R	22918.312'	
T	383.476'		T	400.040'	
L	766.667'		L	800.000'	
E	6.415'		E	3.491'	
PC	697+45.703	18	PC	687+73.187	42
PT	705+12.370	16	PT	695+73.187	40

G-1			H-1		
PI	655+62.701	52	PI	658+57.373	57
Δ	89°-22'-23"		Δ	78°-43'-01"	
D	3°-00'-00"		D	3°-00'-00"	
R	1909.859'		R	1909.859'	
T	1889.075'		T	1566.459'	
L	2979.102'		L	2623.898'	
E	776.433'		E	560.233'	
PC	636+73.626	51	PC	642+90.914	56
PT	666+52.728	53	PT	669+14.812	58



POINT	STATION	CONTROL	STATION-OFFSET TO S.
2	S.B. 597+05.000	P.O.T.	597+05.000 - 59.000' RT.
5	S.B. 619+45.000	P.C.	619+45.000 - 59.000' RT.
6	S.B. 624+52.779	P.I.	624+52.779 - 59.000' RT.
7	S.B. 629+60.547	P.R.C.	629+60.547 - 53.000' RT.
8	S.B. 634+68.326	P.L.	634+68.326 - 47.000' RT.
9	S.B. 639+76.094	P.T.	639+76.094 - 47.000' RT.
14	S.B. 710+00.000	P.O.T.	709+99.953 - 47.000' RT.
15	N.B. 710+26.032	P.O.T.	709+99.953 - 13.000' RT.
16	N.B. 705+12.370	P.T.	704+86.290 - 13.000' RT.
17	N.B. 701+29.179	P.I.	701+29.179 - 13.000' RT.
18	N.B. 697+45.703	P.C.	697+45.703 - 12.637' LT.
23	N.B. 648+38.333	P.T.	648+38.333 - 340.716' LT.
24	N.B. 638+90.515	P.I.	638+90.515 - 404.374' LT.
25	N.B. 629+38.333	P.C.	629+38.333 - 310.355' LT.
28	N.B. 608+38.333	P.T.	608+38.333 - 102.999' LT.
29	N.B. 602+72.129	P.L.	602+72.129 - 47.000' LT.
30	N.B. 597+05.000	P.C.	597+05.000 - 47.000' LT.
60	F 628+98.333	P.O.T.	628+98.333 - 354.246' LT.
31	E 630+56.681	P.C.	630+56.681 - 352.243' LT.
32	E 642+16.896	P.T.	642+16.896 - 379.472' LT.
33	E 657+90.014	P.I.	657+90.014 - 239.892' LT.
35	E 677+86.400	P.C.	677+86.400 - 72.047' LT.
36	E 681+08.108	P.L.	681+08.108 - 45.000' LT.
37	E 684+29.437	P.T.	684+29.437 - 45.000' LT.
38	E 688+96.251	P.O.T.	688+96.251 - 45.000' LT.
40	F 695+73.187	P.T.	695+73.187 - 45.000' RT.
41	F 691+73.227	P.L.	691+73.227 - 45.000' RT.
42	F 687+73.187	P.C.	687+73.187 - 58.961' RT.
44	F 663+97.900	P.T.	663+97.900 - 141.858' RT.
45	F 653+08.526	P.L.	653+08.526 - 210.407' RT.
46	F 633+44.317	P.C.	633+44.317 - 63.937' LT.
47	F 626+28.333	P.T.	626+28.333 - 17.217' LT.
48	F 622+11.733	P.I.	622+11.733 - 9.976' RT.
49	F 617+95.000	P.C.	617+95.000 - 19.005' RT.
50	G 633+72.868	P.O.T.	633+72.868 - 199.990' LT.
51	G 636+73.626	P.C.	636+73.626 - 218.730' LT.
52	G 655+62.701	P.L.	655+62.701 - 10.833' LT.
53	G 666+52.728	P.T.	666+52.728 - 17.500' RT.
54	G 667+10.000	P.O.T.	667+10.000 - 18.359' RT.
55	H 640+78.965	P.O.T.	640+78.965 - 169.832' RT.
56	H 642+90.914	P.C.	642+90.914 - 180.405' RT.
57	H 636+57.373	P.I.	636+57.373 - 258.549' RT.
58	H 659+14.812	P.T.	659+14.812 - 244.044' LT.
59	H 670+20.000	P.O.T.	670+20.000 - 234.739' LT.

MODEL: Default
 FILE NAME: c:\pwwork\johnson\mjohnson\illinois\gpr\0608080466P15 - Details.dgn

FINAL PLAN SHEET
 APPROVED *W. Van Arsdale 12-6-67*
 400 0 400 800
 scale feet

STATE OF ILLINOIS
 DEPARTMENT OF PUBLIC WORKS & BUILDINGS
 DIVISION OF HIGHWAYS
SCHMATIC ALIGNMENT PLAN
 H. W. LOCHNER, INC.
 ENGINEERS
 CHICAGO, ILL.

204

USER NAME = Cody.M.Johnson PLOT SCALE = \$SCALE\$ PLOT DATE = 3/5/2024	DESIGNED - DRAWN - CHECKED - DATE -	REVISED - REVISED - REVISED - REVISED -	STATE OF ILLINOIS DEPARTMENT OF TRANSPORTATION	DETAILS SCALE: SHEET OF SHEETS STA. TO STA.	F.A.I. RTE. 180 SECTION (06-1,2, & 78-1) COUNTY BUREAU PUTNAM TOTAL SHEETS 10 SHEET NO. 10 CONTRACT NO. 66P15 ILLINOIS FED.AID PROJECT
--	--	--	---	---	--