



UNDERGROUND FACILITIES, STRUCTURES AND UTILITIES HAVE BEEN PLOTTED FROM AVAILABLE SURVEYS AND RECORDS AND THEIR LOCATIONS MUST BE CONSIDERED APPROXIMATE ONLY. THERE MAY BE OTHERS, THE EXISTENCE OF WHICH IS PRESENTLY NOT KNOWN. THE DEPTH OF UTILITIES IS ASSUMED TO BE NORMAL AND CUSTOMARY. THE CONTRACTOR SHALL VERIFY LOCATION AND DEPTH OF ALL UTILITIES PRIOR TO CONSTRUCTION.

STATE OF ILLINOIS  
DEPARTMENT OF TRANSPORTATION

PROPOSED  
HIGHWAY PLANS

ROUTE FAS 659 (COUNTY HIGHWAY 8)  
SECTION 19-00077-01-PV  
PROJECT XKMC (318)  
PAVEMENT BASE STABILIZATION - PHASE II  
MOULTRIE COUNTY

C-97-076-22

INDEX OF SHEETS

- 1 COVER SHEET
- 2 GENERAL NOTES AND SUMMARY OF QUANTITIES
- 3 TYPICAL SECTIONS
- 4-7 COUNTY HIGHWAY 8 PLAN VIEWS
- 8-9 INTERSECTION DETAILS
- 10-11 INTERSECTION PROFILES

HIGHWAY STANDARDS

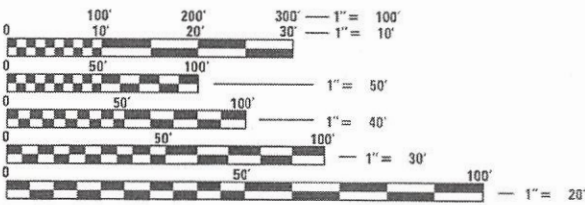
- 000001-08 STANDARD SYMBOLS, ABBREVIATIONS AND PATTERNS
- 001006 DECIMAL OF AN INCH AND OF A FOOT
- 280001-07 TEMPORARY EROSION CONTROL SYSTEMS
- 701901-09 TRAFFIC CONTROL DEVICES
- BLR 21-9 TYPICAL APPLICATION OF TRAFFIC CONTROL DEVICES FOR CONSTRUCTION ON RURAL LOCAL HIGHWAYS
- BLR 22-7 TYPICAL APPLICATION OF TRAFFIC CONTROL DEVICES FOR CONSTRUCTION ON RURAL LOCAL HIGHWAYS (TWO-LANE TWO WAY RURAL TRAFFIC) (ROAD CLOSED TO THRU TRAFFIC)

TRAFFIC DATA

COUNTY HIGHWAY 8  
DESIGN ADT: 800  
DESIGN SPEED: 50 MPH

FUNCTIONAL CLASSIFICATION

MAJOR COLLECTOR



FULL SIZE PLANS HAVE BEEN PREPARED USING STANDARD ENGINEERING SCALES. REDUCED SIZED PLANS WILL NOT CONFORM TO STANDARD SCALES. IN MAKING MEASUREMENTS ON REDUCED PLANS, THE ABOVE SCALES MAY BE USED.

**CHASTAIN & ASSOCIATES LLC**  
CONSULTING ENGINEERS

DECATUR, IL  
ROCKFORD, IL  
SCHAUMBURG, IL  
(833) 424-2782

LAFAYETTE, IN  
PADUCAH, KY  
184-001397

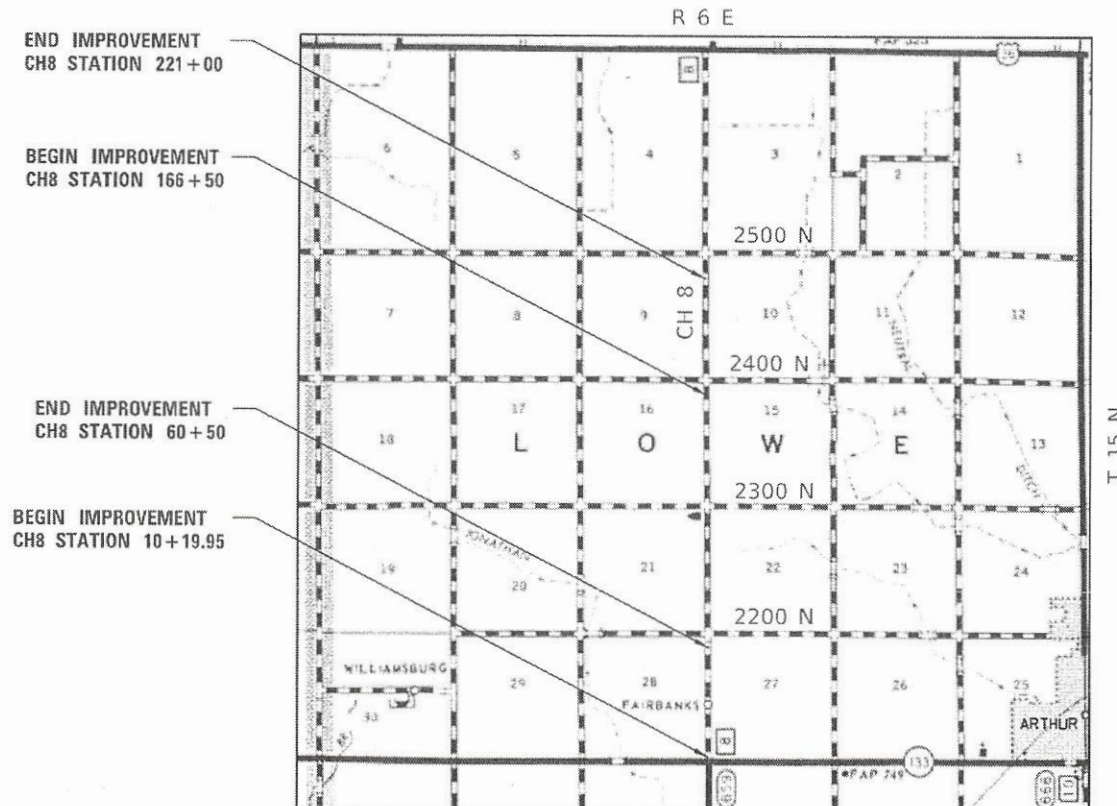
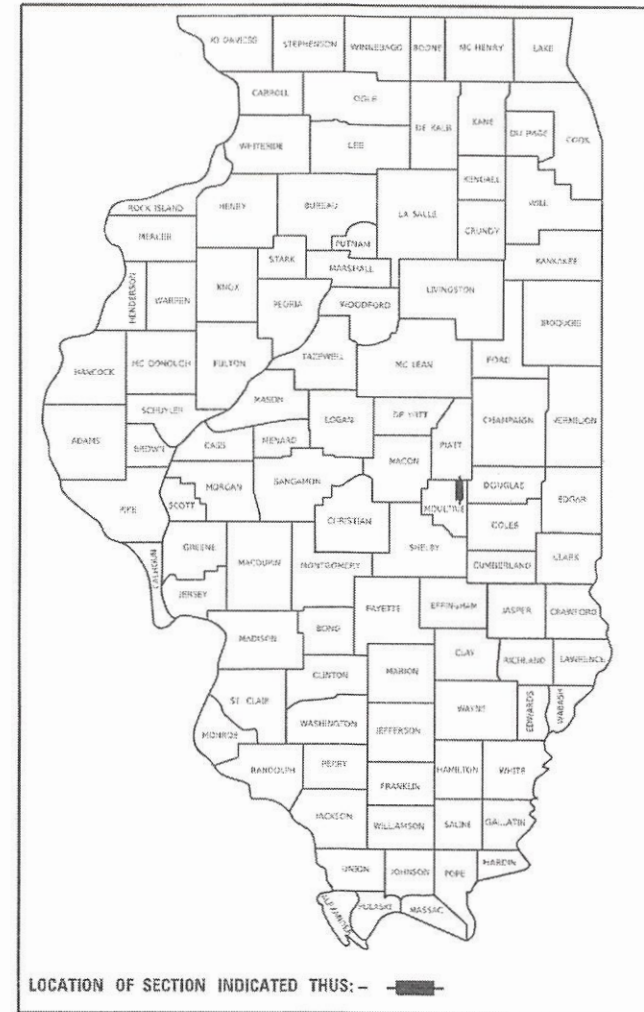
CONTRACT NO. 95964

GROSS LENGTH = 10,480.05 FT. = 1.985 MILE  
NET LENGTH = 10,480.05 FT. = 1.985 MILE



*Corey M. Franzen*  
3/29/24  
COREY M. FRANZEN, P.E. DATE  
LICENSE EXPIRES 11/30/25

F.A.S. RTE.	SECTION	COUNTY	TOTAL SHEETS	SHEET NO.
659	19-00077-01-PV	MOULTRIE	11	1
		ILLINOIS	CONTRACT NO. 95964	



STATE OF ILLINOIS  
DEPARTMENT OF TRANSPORTATION  
DIVISION OF HIGHWAYS

APPROVED April 2, 2024  
COUNTY ENGINEER

PASSED 4-3-24  
*Ben Walker*  
DISTRICT 7 ENGINEER OF LOCAL ROADS AND STREETS

RELEASED FOR BID BASED ON LIMITED REVIEW 4-3-24  
*Corey M. Franzen*  
REGION 4 ENGINEER

PRINTED BY THE AUTHORITY OF THE STATE OF ILLINOIS

**GENERAL NOTES**

- HORIZONTAL CONTROL AND BEARINGS ARE BASED ON THE ILLINOIS COORDINATE SYSTEM, EAST ZONE, NORTH AMERICAN DATUM OF 1983(NAD 83), ADJUSTMENT OF 2011.
- ALL ELEVATIONS ARE BASED ON NORTH AMERICAN VERTICAL DATUM OF 1988(NAVD 88). THE PROPOSED GRADE ELEVATIONS SHOWN ON THE PLANS ARE THE ELEVATIONS FOR THE FINISHED SURFACE AT THE LOCATIONS INDICATED.
- DIMENSIONS FOR THE RADII SHOWN ON THE PLAN SHEETS ARE TO THE EDGE OF PAVEMENT UNLESS OTHERWISE NOTED.
- THE CONTRACTOR SHALL NOTIFY THE RESIDENT ENGINEER AND THE COUNTY ENGINEER 72 HOURS IN ADVANCE OF CONSTRUCTION WORK.
- UNLESS OTHERWISE NOTED, EXISTING CULVERTS ARE TO REMAIN. CARE SHALL BE TAKEN SUCH THAT EXISTING CULVERTS ARE NOT DAMAGED DURING PULVERIZATION AND BASE PROCESSING. A GAP IN THE PROCESSED BASE MAY BE REQUIRED AT LOCATIONS WHERE CULVERTS HAVE LIMITED COVER. DEPTH OF COVER SHALL NOT BE REDUCED.
- BASELINES (G. ALIGNMENTS) ARE BASED ON LIMITED DATA AND SHOULD NOT BE USED EXCLUSIVELY FOR LAYOUT OF HIGHWAY CENTERLINE THROUGHOUT THE PROJECT. COORDINATE WITH THE ENGINEER FOR FINAL CENTERLINE LAYOUT.

THE FOLLOWING RATES OF APPLICATION HAVE BEEN USED IN CALCULATING PLAN QUANTITIES:

AGGREGATE MATERIALS	-	1.8 TON/CU YD
SEAL COAT AGGREGATE	-	25 LB/SQ YD
COVER COAT AGGREGATE	-	25 LB/SQ YD
BITUMINOUS MATERIALS (PRIME COAT)	-	0.40 GAL/SQ YD
BITUMINOUS MATERIALS (COVER AND SEAL COATS)	-	0.40 GAL/SQ YD
APPROXIMATE BIT. MATERIAL WEIGHT CONVERSION	-	252 GAL/TON
RATE OF CEMENT APPLICATION FOR PROCESSING MODIFIED SOIL	-	10% BY DRY UNIT WEIGHT

**CEMENT PROCESSED MODIFIED SOIL**

THE CEMENT-PROCESSED MODIFIED SOIL BASE SHALL ATTAIN A MINIMUM COMPRESSIVE STRENGTH OF 300 PSI.

THE 10% CEMENT APPLICATION RATE SPECIFIED FOR THE PROCESSED MODIFIED SOIL IS ESTIMATED BASED ON LIMITED SAMPLING OF THE MATERIALS AND PRELIMINARY MIX DESIGNS. THE FINAL MIX DESIGN PROPORTIONING SHALL BE DETERMINED BY THE CONTRACTOR TO MEET THE STRENGTH REQUIREMENTS. PRELIMINARY SAMPLING AND MIX DESIGN INFORMATION IS AVAILABLE FROM THE OFFICE OF THE COUNTY ENGINEER UPON REQUEST.

PRIOR TO BEGINNING THE PROCESSING OPERATION, THE CONTRACTOR SHALL PERFORM SAW CUTS TRANSVERSE TO THE ROADWAY AT ALL PROJECT TERMINI TO ESTABLISH THE LIMITS OF PROCESSING. SEAL COAT OF THE CLASS A3 SURFACE SHALL BLEND INTO THE EXISTING PAVEMENT BEYOND THE SAW CUT AT EACH LOCATION, UNLESS OTHERWISE NOTED. THESE SAW CUTS WILL NOT BE PAID FOR SEPARATELY, BUT WILL BE INCLUDED IN THE COST OF PROCESSING MODIFIED SOIL 14" .

THE BASE MATERIALS (INCLUDING OIL AND CHIP SURFACES), AND SUBGRADE MATERIAL SHALL BE SCARIFIED, PULVERIZED, AND THOROUGHLY MIXED TOGETHER TO THE DEPTH OF CEMENT STABILIZATION INDICATED IN THE PLANS PRIOR TO BEING SHAPED TO THE PROPER GRADE AS SPECIFIED IN SECTION 302 AND PRIOR TO FURNISHING AND APPLYING THE CEMENT.

THE FINISHED CROSS SLOPE DURING PRE-PULVERIZATION PROCESSING SHALL BE WITHIN -0.5% TO +1.0% OF THE PROPOSED FINAL CROSS SLOPE. THIS DOES NOT ALLEVIATE THE CONTRACTOR FROM MEETING FINAL CROSS SLOPE REQUIREMENTS INDICATED IN THE PLANS.

FINAL TRIMMING OF THE CEMENT-STABILIZED BASE TO RECEIVE A CLASS A3 SURFACE IS NOT REQUIRED IF THE CONTRACTOR DISPLAYS THE ABILITY TO CONSTRUCT AN ACCEPTABLE SURFACE, CROWN, CROSS SLOPE, AND PROFILE DURING THE CEMENT STABILIZATION PROCESS. IF THESE RESULTS CANNOT BE ACHIEVED, FINAL TRIMMING WILL BE REQUIRED TO THE LINES AND GRADES SHOWN ON THE PLANS AND ON THE TYPICAL SECTIONS. ALL TRIMMED MATERIAL SHALL BE REMOVED FROM THE SITE AND DISPOSED OF IN A TIMELY MANNER ACCORDING TO ARTICLE 202.03. COST OF REMOVAL AND DISPOSAL OF EXCESS MATERIAL WILL NOT BE PAID FOR SEPARATELY, BUT WILL BE INCLUDED IN THE COST OF PROCESSING MODIFIED SOIL 14" .

FINAL DETERMINATION OF THE NECESSITY OF TRIMMING OF CEMENT STABILIZATION SHALL BE THE RESPONSIBILITY OF THE ENGINEER.

PLACEMENT OF THE CLASS A3 SURFACE SHALL NOT OCCUR UNTIL THE CEMENT-STABILIZED BASE HAS REACHED THE REQUIRED 7 DAY COMPRESSIVE STRENGTH OR HAS OTHERWISE BEEN ALLOWED SUFFICIENT TIME TO CURE AS DIRECTED BY THE ENGINEER. THE CEMENT STABILIZED BASE SURFACE SHALL BE CLEAN PRIOR TO THE APPLICATION OF THE CLASS A3 SURFACE.

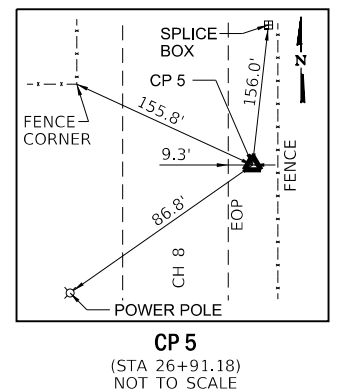
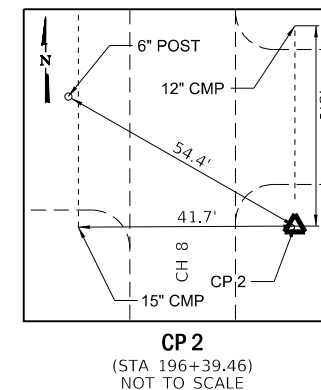
**SUMMARY OF QUANTITIES**

CODE NO.	ITEM	UNIT	TOTAL QUANTITY	CONSTR. CODE	
				ROADWAY	
				0006	RURAL
20400800	FURNISHED EXCAVATION	CU YD	75	75	
25000300	SEEDING, CLASS 3	ACRE	0.25	0.25	
25100630	EROSION CONTROL BLANKET	SQ YD	787	787	
28000400	PERIMETER EROSION BARRIER	FOOT	1580	1580	
30200750	PROCESSING MODIFIED SOIL 14"	SQ YD	28307	28307	
30201700	PORTLAND CEMENT	TON	1710	1710	
40200800	AGGREGATE SURFACE COURSE, TYPE B	TON	17	17	
48102100	AGGREGATE WEDGE SHOULDER, TYPE B	TON	780	780	
50105220	PIPE CULVERT REMOVAL	FOOT	68	68	
54010603	PRECAST CONCRETE BOX CULVERT 6' X 3'	FOOT	40	40	
54205053	PIPE CULVERTS, SPECIAL 18"	FOOT	35	35	
59300100	CONTROLLED LOW-STRENGTH MATERIAL	CU YD	70	70	
61101013	STORM SEWERS PROTECTED, CLASS A, 12"	FOOT	40	40	
61133100	FIELD TILE JUNCTION VAULTS, 2' DIA.	EACH	4	4	
61139900	STORM SEWERS (SPECIAL), 6"	FOOT	8	8	
61140200	STORM SEWERS (SPECIAL), 12"	FOOT	6	6	
67100100	MOBILIZATION	L SUM	1	1	

CODE NO.	ITEM	UNIT	TOTAL QUANTITY	CONSTR. CODE	
				ROADWAY	
				0006	RURAL
LR403200	BITUMINOUS MATERIALS (PRIME COAT)	TON	42	42	
LR403300	SURFACE PROFILE MILLING	SQ YD	28307	28307	
LR403400	BITUMINOUS MATERIALS (COVER AND SEAL COATS)	TON	125	125	
LR403500	COVER COAT AGGREGATE	TON	653	653	
LR403600	SEAL COAT AGGREGATE	TON	327	327	
X1700063	CONCRETE HEADWALL (SPECIAL)	EACH	2	2	
X3580300	AGGREGATE BASE REPAIR (SPECIAL)	TON	61	61	
X5810103	MEMBRANE WATERPROOFING SYSTEM FOR BURIED STRUCTURES	SQ YD	41	41	
X6050065	REMOVING INLETS (SPECIAL)	EACH	2	2	
X6110073	EXISTING FIELD TILE REMOVAL	FOOT	44	44	
XX008873	AGGREGATE SURFACE COURSE (SPECIAL)	TON	304	304	
XX009289	TRAFFIC CONTROL AND PROTECTION, STANDARD BLR 21	L SUM	1	1	

HORIZONTAL CONTROL						
CP	NORTHING	EASTING	ELEVATION	DISCRIPTION	STATION	OFFSET
2	1,126,990.0800	929,138.2290	676.29	1/2 IP PINK CP CAP	196+39.46	20.76 RT
5	1,110,041.7960	929,191.0380	674.77	1/2 IP PINK TRAV CAP	26+91.18	20.81 RT

VERTICAL CONTROL						
BM	NORTHING	EASTING	ELEVATION	DISCRIPTION	STATION	OFFSET
102	1,124,310.2250	929,151.3850	680.57	RR SPIKE VERTICAL CONTROL IN POWER POLE SE CORNER OF CH8 AND 2400N	169+59.58	30.77 RT
104	1,113,660.9170	929,139.4540	675.55	RR SPIKE VERTICAL CONTROL IN POWER POLE SW CORNER OF CH8 AND 2200N	63+10.32	26.85 LT
105	1,108,387.6760	929,135.4490	672.98	CH5 SQUARE VERTICAL CONTROL ON WINGWALL OF CULVERT NW CORNER OF CH8 AND IL 133	10+36.91	31.28 LT



FILE NAME = I:\Municipalities\Moultrie County\8207 CH 8 Improvements\CADD\CADD\Civil\Phase 2\8207 CH 8\02.gemnote.ph2.dgn

USER NAME = rkocher	DESIGNED - CMF	REVISED -
	DRAWN - RLK	REVISED -
PLOT SCALE = 40,0000' / in.	CHECKED - CMF	REVISED -
PLOT DATE = 3/29/2024	DATE - 8/17/2022	REVISED -

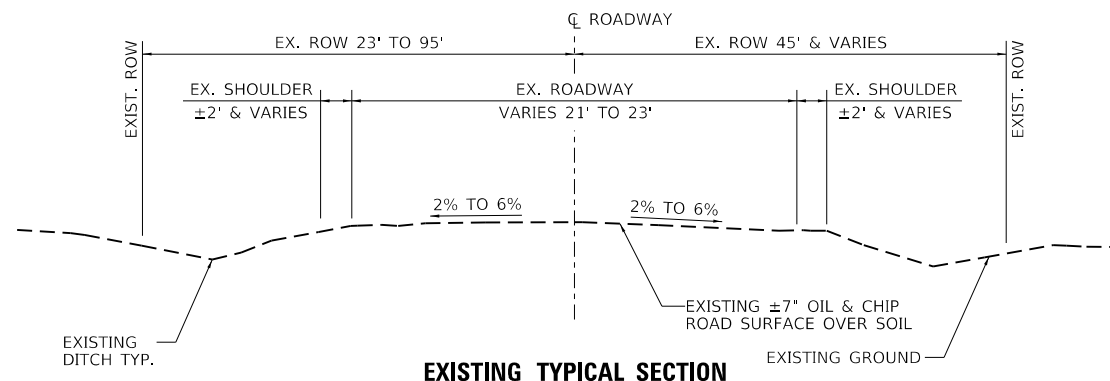


DECATUR, IL  
ROCKFORD, IL  
SCHAUMBURG, IL  
(833) 424-2782

LAFAYETTE, IN  
PADUCAH, KY  
184-001397

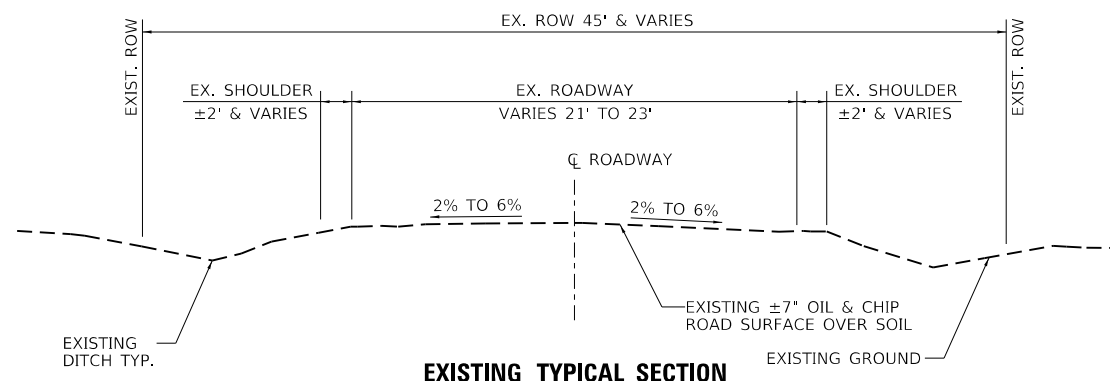
GENERAL NOTES & SUMMARY OF QUANTITIES			
COUNTY HIGHWAY 8 ROADWAY IMPROVEMENTS – MOULTRIE COUNTY			
SCALE:	SHEET NO.	OF SHEETS	STA. TO STA.

F.A.S. RTE.	SECTION	COUNTY	TOTAL SHEETS	SHEET NO.
659	19-00077-01-PV	MOULTRIE	11	2
CONTRACT NO. 95964				
ILLINOIS FED. AID PROJECT				



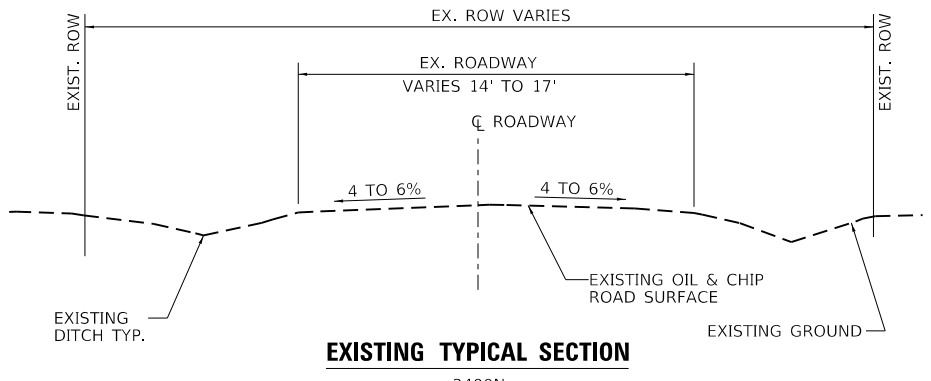
**EXISTING TYPICAL SECTION**

COUNTY HIGHWAY 8  
10+19.95 to 34+29.00



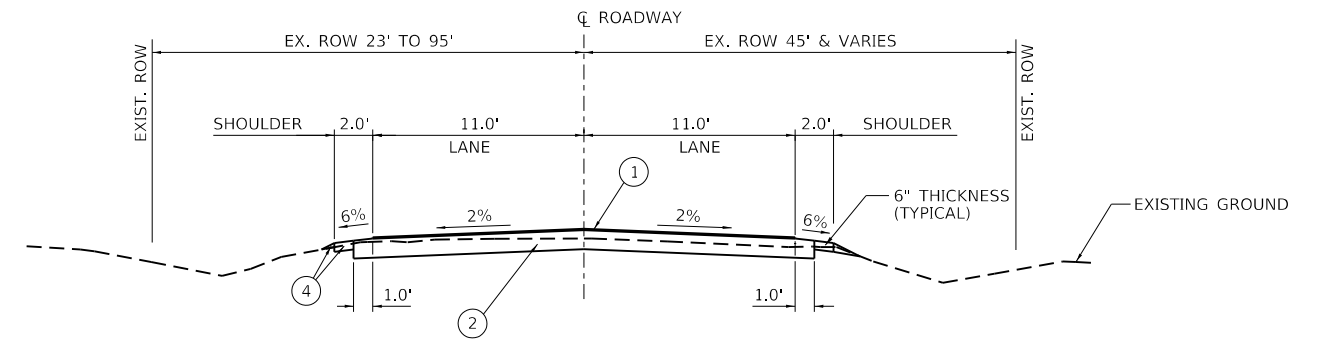
**EXISTING TYPICAL SECTION**

COUNTY HIGHWAY 8  
34+29.00 to 60+50.00  
166+50.00 to 221+00.00



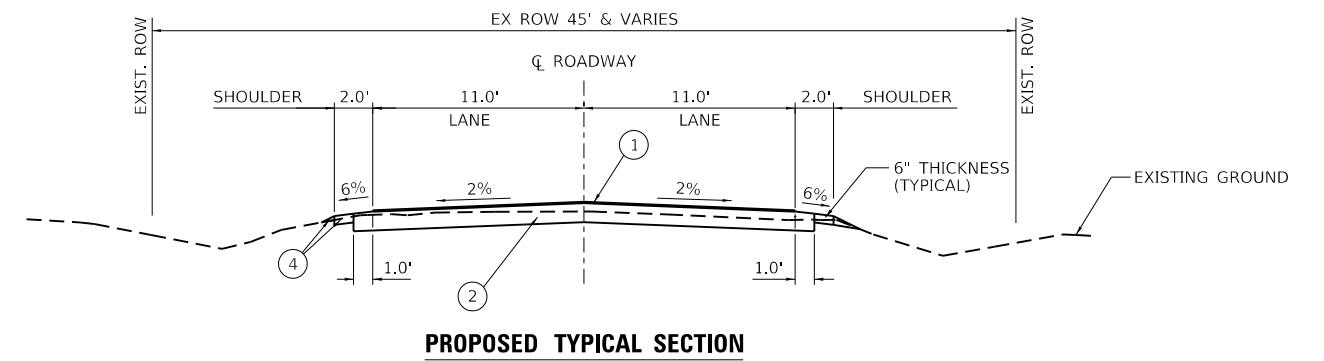
**EXISTING TYPICAL SECTION**

2400N  
701+25.00 to 703+25.00



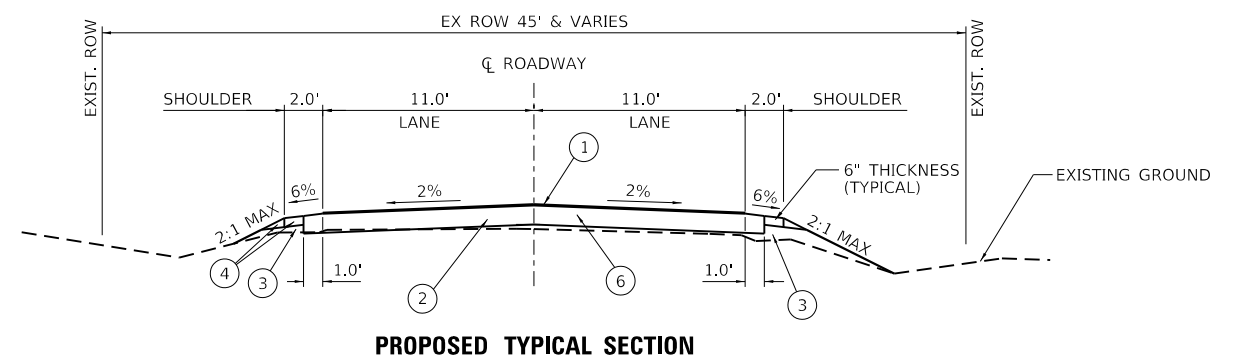
**PROPOSED TYPICAL SECTION**

COUNTY HIGHWAY 8  
10+40.00 to 34+29.00



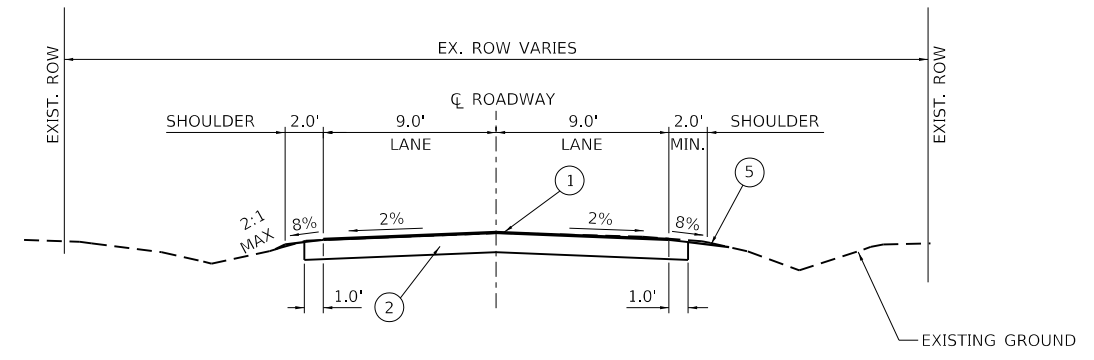
**PROPOSED TYPICAL SECTION**

COUNTY HIGHWAY 8  
34+29.00 to 60+50.00  
166+50.00 to 167+50.00  
174+40.00 to 221+00.00



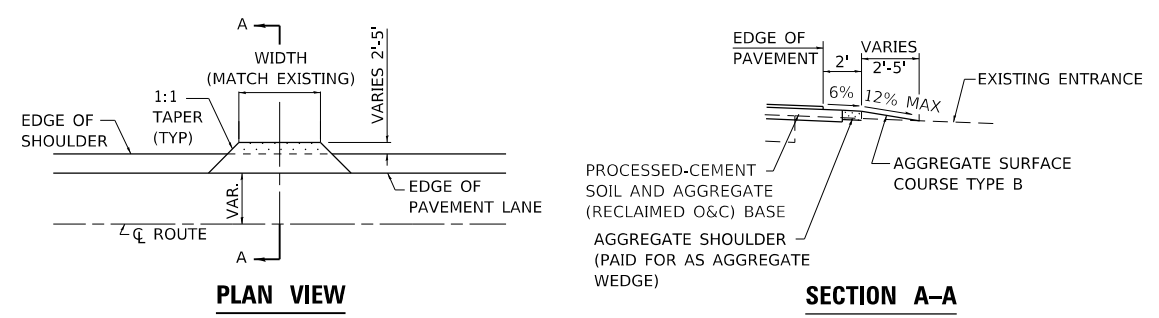
**PROPOSED TYPICAL SECTION**

COUNTY HIGHWAY 8  
167+50.00 to 174+40.00



**PROPOSED TYPICAL SECTION**

2400N  
701+25.00 to 703+25.00



**PLAN VIEW**

**SECTION A-A**

**AGGREGATE ENTRANCE**

- ① CLASS A3 BIT. SURFACE TREATMENT
- ② 14" PROCESSED-CEMENT SOIL AND AGGREGATE (RECLAIMED O&C) BASE
- ③ EMBANKMENT (FURNISHED EXCAVATION)
- ④ AGGREGATE WEDGE SHOULDER
- ⑤ TURF SHOULDER
- ⑥ AGGREGATE SURFACE COURSE (SPECIAL) BLEND WITH MODIFIED SOIL FOR PROCESSING TO BRING ELEVATION TO GRADE

**CHASTAIN & ASSOCIATES LLC**  
CONSULTING ENGINEERS

DECATUR, IL  
ROCKFORD, IL  
SCHAUMBURG, IL  
(833) 424-2782

LAFAYETTE, IN  
PADUCAH, KY  
184-001397

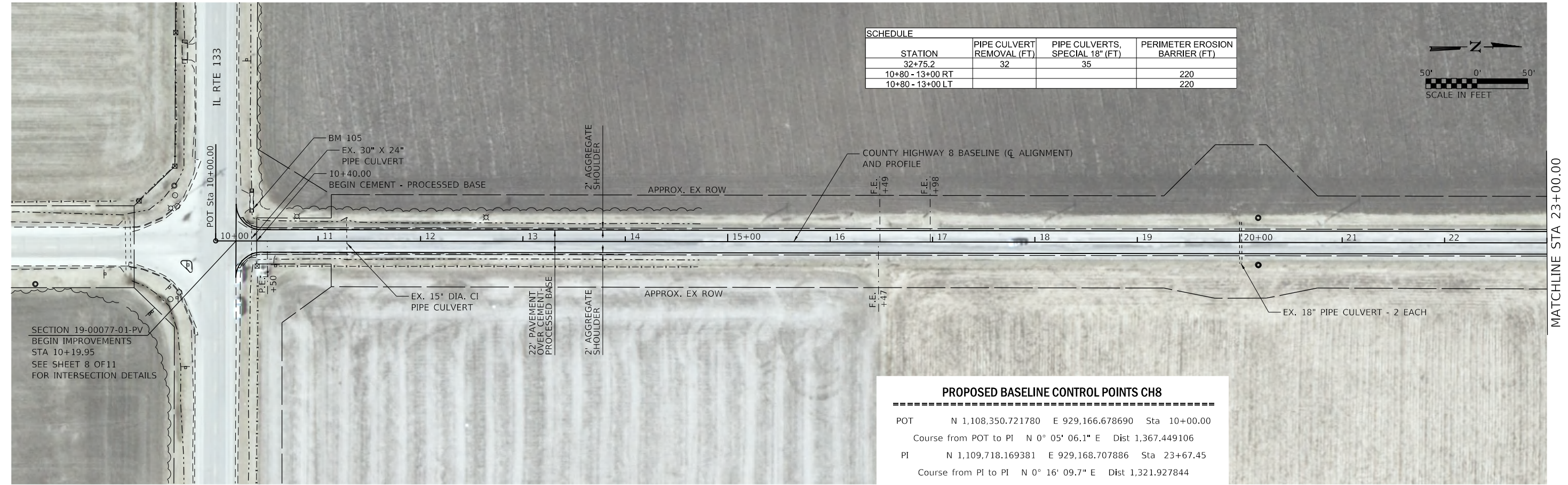
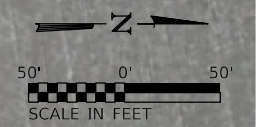
TYPICAL SECTIONS			
COUNTY HIGHWAY 8 ROADWAY IMPROVEMENTS – MOULTRIE COUNTY			
SCALE:	SHEET NO.	OF SHEETS	STA. TO STA.

F.A.S. RTE.	SECTION	COUNTY	TOTAL SHEETS	SHEET NO.
659	19-00077-01-PV	MOULTRIE	11	3
CONTRACT NO. 95964				
ILLINOIS FED. AID PROJECT				

FILE NAME = I:\Municipalities\Moultrie County\8207 CH 8 Improvements\CADD\CADD\_Civil\Phase 2\8207\_sht03\_ttypicals.ph2.dgn



SCHEDULE			
STATION	PIPE CULVERT REMOVAL (FT)	PIPE CULVERTS, SPECIAL 18" (FT)	PERIMETER EROSION BARRIER (FT)
32+75.2	32	35	
10+80 - 13+00 RT			220
10+80 - 13+00 LT			220

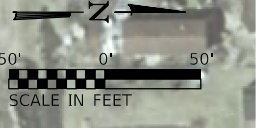


**PROPOSED BASELINE CONTROL POINTS CH8**

=====

POT	N 1,108,350.721780	E 929,166.678690	Sta 10+00.00
Course from POT to PI	N 0° 05' 06.1\"	E	Dist 1,367.449106
PI	N 1,109,718.169381	E 929,168.707886	Sta 23+67.45
Course from PI to PI	N 0° 16' 09.7\"	E	Dist 1,321.927844
PI	N 1,111,040.082618	E 929,174.922280	Sta 36+89.38
Course from PI to PI	N 0° 10' 51.9\"	W	Dist 1,321.919839
PI	N 1,112,361.995854	E 929,170.744173	Sta 50+11.30
Course from PI to PI	N 0° 11' 44.4\"	W	Dist 1,321.920946
PI	N 1,113,683.909091	E 929,166.229535	Sta 63+33.22
Course from PI to POT	N 0° 17' 22.5\"	W	Dist 1,327.818644
POT	N 1,115,011.710776	E 929,159.518555	Sta 76+61.04

=====



NOTE: ENTRANCES SHOWN ARE APPROXIMATE AND MAY NOT BE SHOWN AT ALL LOCATIONS

USER NAME = rkocher	DESIGNED - CMF	REVISED -
PLOT SCALE = 100.0000' / in.	DRAWN - RLK	REVISED -
PLOT DATE = 3/29/2024	CHECKED - CMF	REVISED -
	DATE - 8/17/2022	REVISED -

**CHASTAIN & ASSOCIATES LLC**  
CONSULTING ENGINEERS

DECATUR, IL  
ROCKFORD, IL  
SCHAUMBURG, IL  
(833) 424-2782

LAFAYETTE, IN  
PADUCAH, KY  
184-001397

**COUNTY HIGHWAY 8 PLAN**  
**COUNTY HIGHWAY 8 ROADWAY IMPROVEMENTS - MOULTRIE COUNTY**

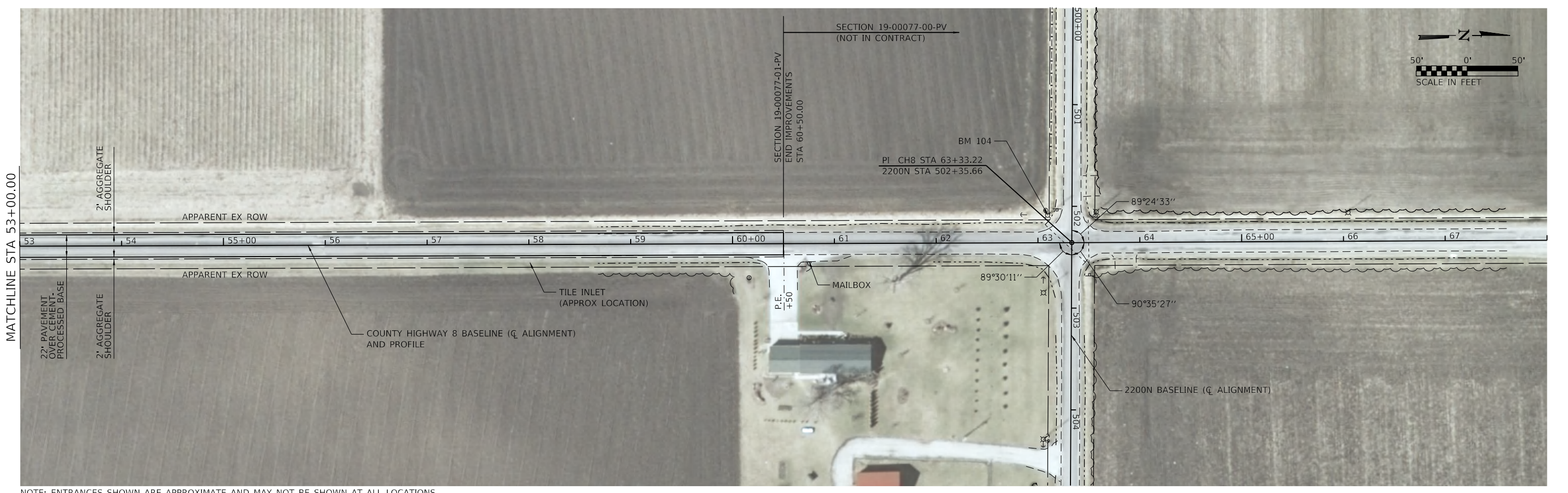
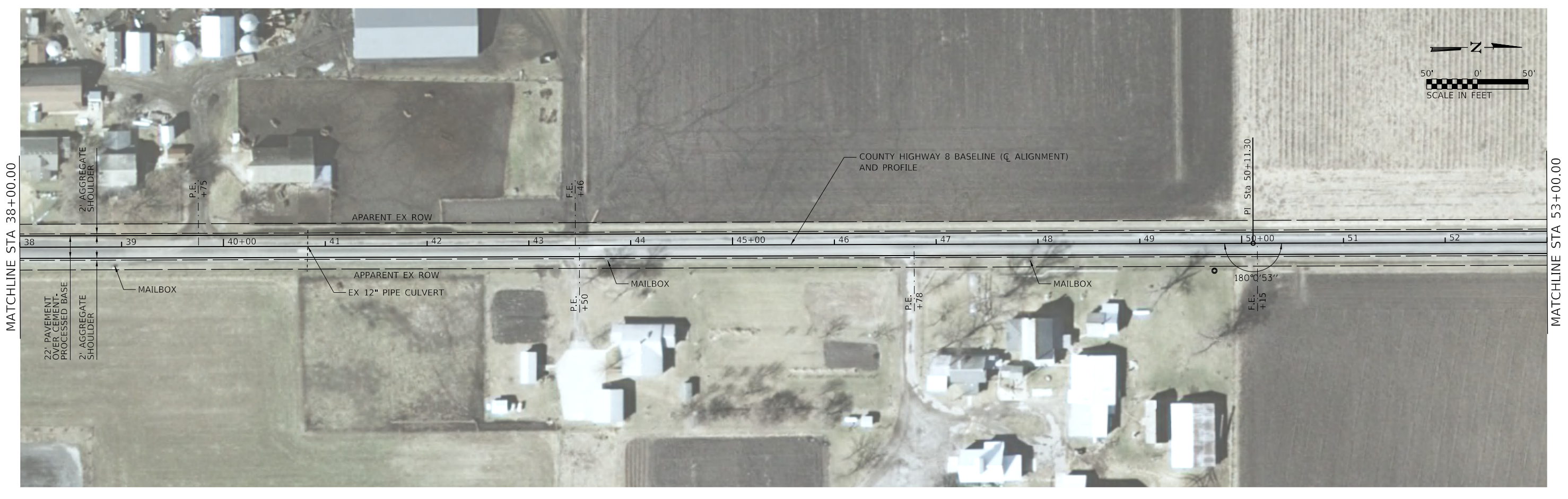
SCALE: SHEET NO. 1 OF 4 SHEETS STA. 10+00.00 TO STA. 38+00.00

F.A.S. RTE. 659	SECTION 19-00077-01-PV	COUNTY MOULTRIE	TOTAL SHEETS 11	SHEET NO. 4
ILLINOIS FED. AID PROJECT			CONTRACT NO. 95964	

FILE NAME = I:\Municipalities\Moultrie County\8207 CH 8 Improvements\CADD\CADD\Phase 2\8207\_sht04.ch8.plan01.ph2.dgn



FILE NAME = I:\Municipalities\Moultrie County\CADD\CADD\_Civil\Phase 2\8207\_sht05\_ch8\_plan02\_ph2.dgn



NOTE: ENTRANCES SHOWN ARE APPROXIMATE AND MAY NOT BE SHOWN AT ALL LOCATIONS

USER NAME = rkocher	DESIGNED - CMF	REVISED -
	DRAWN - RLK	REVISED -
PLOT SCALE = 100.0000' / in.	CHECKED - CMF	REVISED -
PLOT DATE = 3/29/2024	DATE - 8/17/2022	REVISED -

**CHASTAIN & ASSOCIATES LLC**  
CONSULTING ENGINEERS

DECATUR, IL  
ROCKFORD, IL  
SCHAUMBURG, IL  
(833) 424-2782

LAFAYETTE, IN  
PADUCAH, KY  
184-001397

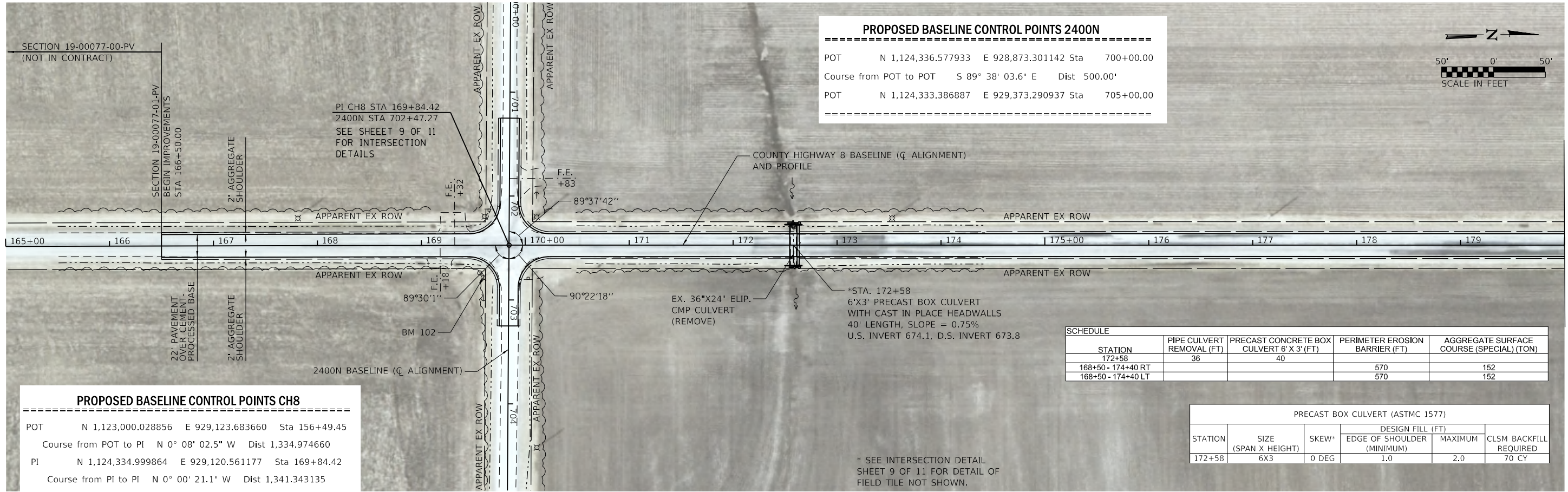
**COUNTY HIGHWAY 8 PLAN**  
**COUNTY HIGHWAY 8 ROADWAY IMPROVEMENTS – MOULTRIE COUNTY**

SCALE: SHEET NO. 2 OF 4 SHEETS STA. 38+00.00 TO STA. 60+50.00

F.A.S. RTE.	SECTION	COUNTY	TOTAL SHEETS	SHEET NO.
659	19-00077-01-PV	MOULTRIE	11	5
<b>CONTRACT NO. 95964</b>				
ILLINOIS FED. AID PROJECT				

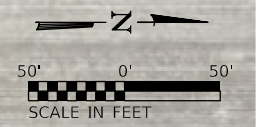


FILE NAME = I:\Municipalities\Moultrie County\8207 CH 8 Improvements\CADD\CADD\Phase 2\8207\_sht06.ch8.plan03\_ph2.dgn



**PROPOSED BASELINE CONTROL POINTS 2400N**

POT	N 1,124,336.577933	E 928,873.301142	Sta 700+00.00
Course from POT to POT	S 89° 38' 03.6\" E Dist 500.00'		
POT	N 1,124,333.386887	E 929,373.290937	Sta 705+00.00



**PROPOSED BASELINE CONTROL POINTS CH8**

POT	N 1,123,000.028856	E 929,123.683660	Sta 156+49.45
Course from POT to PI	N 0° 08' 02.5\" W Dist 1,334.974660		
PI	N 1,124,334.999864	E 929,120.561177	Sta 169+84.42
Course from PI to PI	N 0° 00' 21.1\" W Dist 1,341.343135		
PI	N 1,125,676.342992	E 929,120.423744	Sta 183+25.77
Course from PI to PI	N 0° 07' 44.5\" W Dist 1,341.346529		
PI	N 1,127,017.686120	E 929,117.403047	Sta 196+67.11
Course from PI to PI	N 0° 03' 33.3\" W Dist 1,341.343845		
PI	N 1,128,359.029248	E 929,116.016073	Sta 210+08.46
Course from PI to POT	N 0° 11' 21.6\" W Dist 1,341.350452		
POT	N 1,129,700.372376	E 929,111.583322	Sta 223+49.81

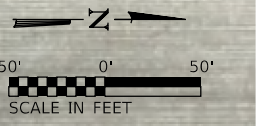
**SCHEDULE**

STATION	PIPE CULVERT REMOVAL (FT)	PRECAST CONCRETE BOX CULVERT 6' X 3' (FT)	PERIMETER EROSION BARRIER (FT)	AGGREGATE SURFACE COURSE (SPECIAL) (TON)
172+58	36	40		
168+50 - 174+40 RT			570	152
168+50 - 174+40 LT			570	152

**PRECAST BOX CULVERT (ASTM C1577)**

STATION	SIZE (SPAN X HEIGHT)	SKEW*	DESIGN FILL (FT)		
			EDGE OF SHOULDER (MINIMUM)	MAXIMUM	CLSM BACKFILL REQUIRED
172+58	6X3	0 DEG	1.0	2.0	70 CY

\* SEE INTERSECTION DETAIL SHEET 9 OF 11 FOR DETAIL OF FIELD TILE NOT SHOWN.



NOTE: ENTRANCES SHOWN ARE APPROXIMATE AND MAY NOT BE SHOWN AT ALL LOCATIONS

USER NAME = rkocher	DESIGNED - CMF	REVISED -
PLOT SCALE = 100.0000' / in.	DRAWN - RLK	REVISED -
PLOT DATE = 4/1/2024	CHECKED - CMF	REVISED -
	DATE - 8/17/2022	REVISED -

**CHASTAIN & ASSOCIATES LLC**  
CONSULTING ENGINEERS

DECATUR, IL  
ROCKFORD, IL  
SCHAUMBURG, IL  
(833) 424-2782

LAFAYETTE, IN  
PADUCAH, KY  
184-001397

**COUNTY HIGHWAY 8 PLAN**  
**COUNTY HIGHWAY 8 ROADWAY IMPROVEMENTS - MOULTRIE COUNTY**

SCALE: SHEET NO. 3 OF 4 SHEETS STA. 166+50.00 TO STA. 195+00.00

F.A.S. RTE.	SECTION	COUNTY	TOTAL SHEETS	SHEET NO.
659	19-00077-01-PV	MOULTRIE	11	6

CONTRACT NO. 95964

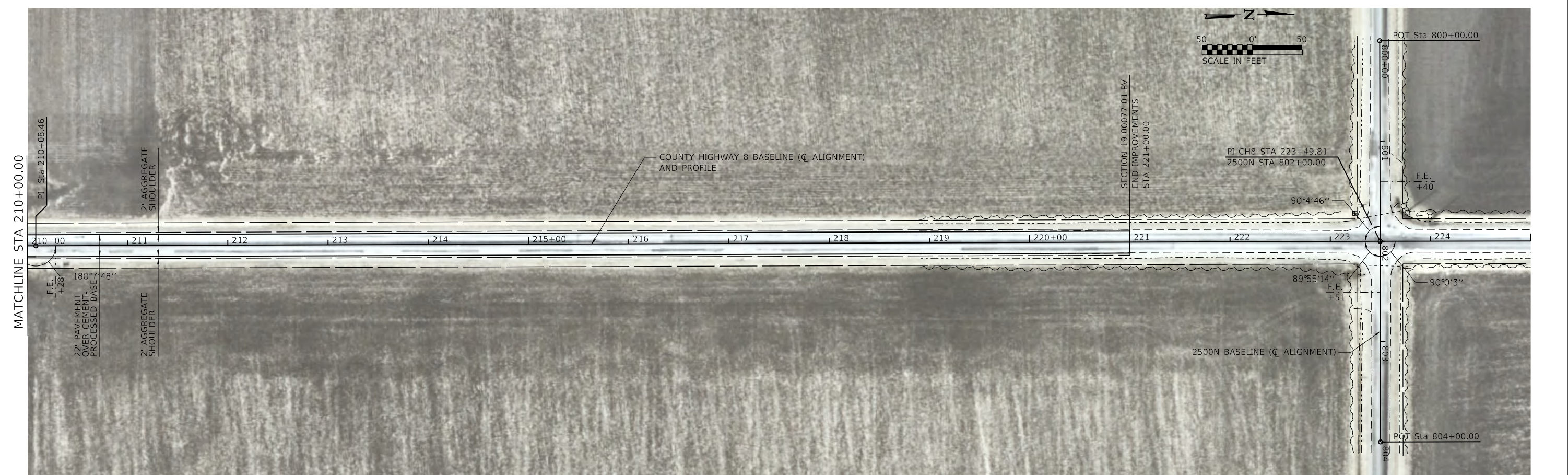
ILLINOIS FED. AID PROJECT

MATCHLINE STA 180+00.00

MATCHLINE STA 195+00.00



FILE NAME = I:\Municipalities\Moultrie County\8207 CH 8 Improvements\CADD\CADD\Civil\Phase 2\8207 sht07\_ch8\_plan04\_ph2.dgn



NOTE: ENTRANCES SHOWN ARE APPROXIMATE AND MAY NOT BE SHOWN AT ALL LOCATIONS

USER NAME = rkocher	DESIGNED - CMF	REVISED -
	DRAWN - RLK	REVISED -
PLOT SCALE = 100.0000' / in.	CHECKED - CMF	REVISED -
PLOT DATE = 3/29/2024	DATE - 8/17/2022	REVISED -

**CHASTAIN & ASSOCIATES LLC**  
CONSULTING ENGINEERS

DECATUR, IL  
ROCKFORD, IL  
SCHAUMBURG, IL  
(833) 424-2782

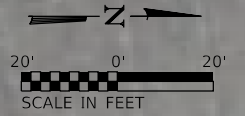
LAFAYETTE, IN  
PADUCAH, KY  
184-001397

**COUNTY HIGHWAY 8 PLAN**  
**COUNTY HIGHWAY 8 ROADWAY IMPROVEMENTS - MOULTRIE COUNTY**

SCALE: SHEET NO. 4 OF 4 SHEETS STA. 195+00.00 TO STA. 221+00.00

F.A.S. RTE.	SECTION	COUNTY	TOTAL SHEETS	SHEET NO.
659	19-00077-01-PV	MOULTRIE	11	7
CONTRACT NO. 95964				
ILLINOIS FED. AID PROJECT				





\*SAW CUT PAVEMENT FLUSH WITH TYPICAL EDGE OF HMA PAVEMENT AT IL RTE 133. ELEVATION OF THE SEAL COAT OF THE CLASS A3 SURFACE TO MATCH EXISTING HMA PAVEMENT.

FILE NAME = I:\Municipalities\Moultrie County\8207 CH 8 Improvements\CADD\CADD\Civil\Phase 2\8207 sh08B.intersecRTE133.dgn

SECTION 19-00077-01-PV  
BEGIN IMPROVEMENTS  
STA 10+19.95

USER NAME = rkocher	DESIGNED - CMF	REVISED -
	DRAWN - RLK	REVISED -
PLOT SCALE = 40.0000' / in.	CHECKED - CMF	REVISED -
PLOT DATE = 3/29/2024	DATE - 8/17/2022	REVISED -

**CHASTAIN & ASSOCIATES LLC**  
CONSULTING ENGINEERS

DECATUR, IL  
ROCKFORD, IL  
SCHAMBURG, IL  
(833) 424-2782

LAFAYETTE, IN  
PADUCAH, KY  
184-001397

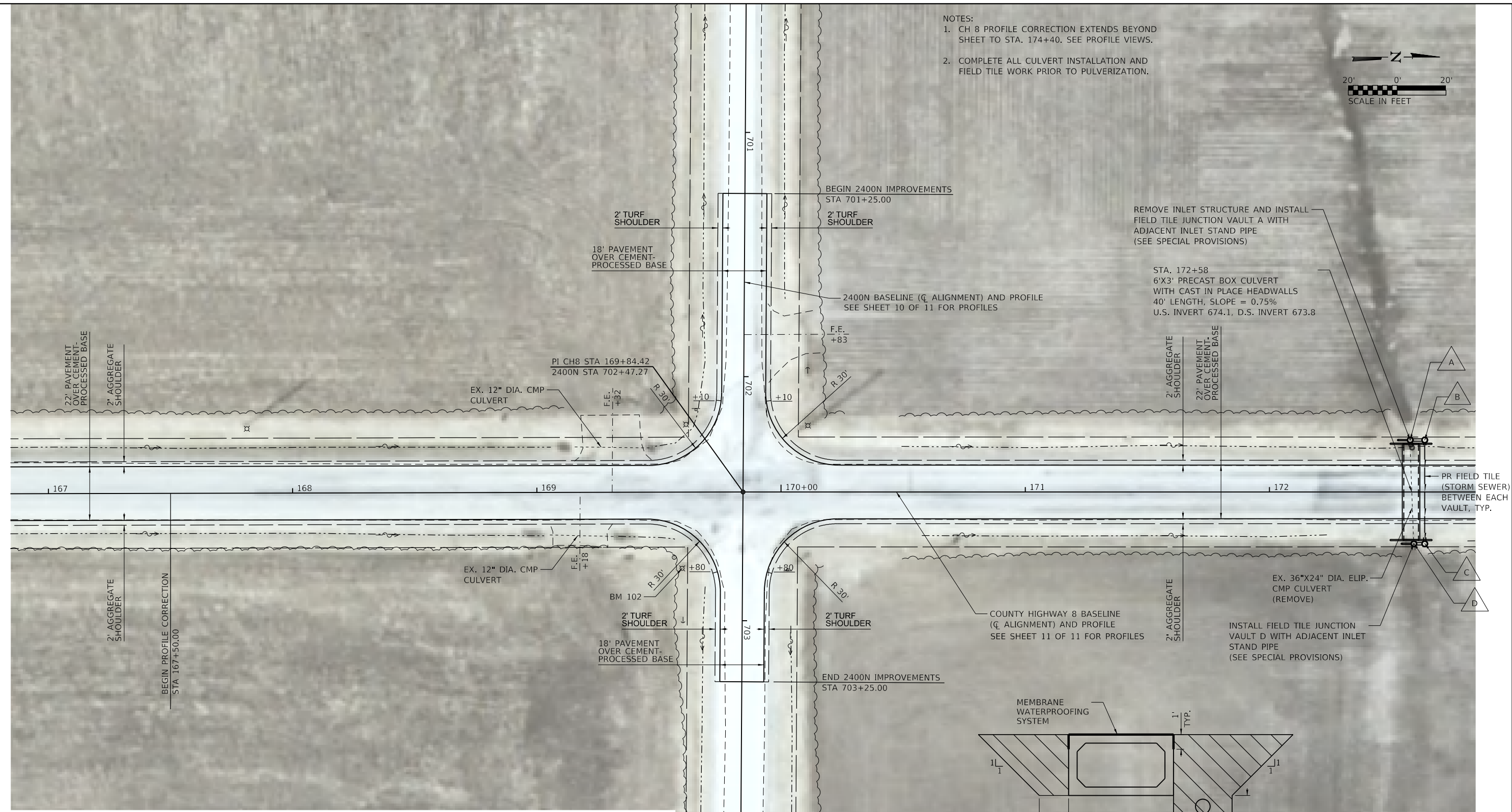
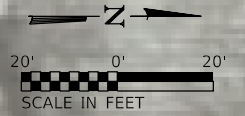
**CH 8 & IL RTE 133 INTERSECTION DETAILS**  
**COUNTY HIGHWAY 8 ROADWAY IMPROVEMENTS - MOULTRIE COUNTY**

SCALE: SHEET NO. 1 OF 2 SHEETS STA. TO STA.

F.A.S. RTE.	SECTION	COUNTY	TOTAL SHEETS	SHEET NO.
659	19-00077-01-PV	MOULTRIE	11	8
<b>CONTRACT NO. 95964</b>				
ILLINOIS FED. AID PROJECT				



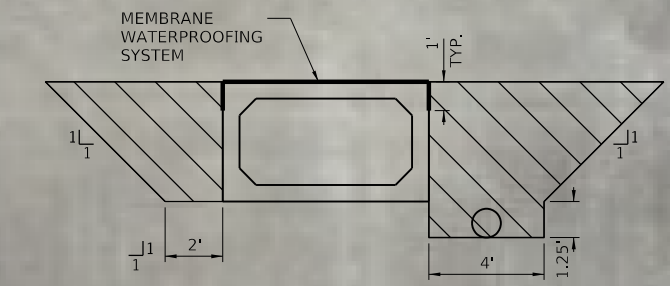
- NOTES:
- CH 8 PROFILE CORRECTION EXTENDS BEYOND SHEET TO STA. 174+40. SEE PROFILE VIEWS.
  - COMPLETE ALL CULVERT INSTALLATION AND FIELD TILE WORK PRIOR TO PULVERIZATION.



Station 172+58

FIELD TILE JUNCTION VAULT SCHEDULE								
JCT. VAULT	STATION	OFFSET	SIZE, DIA (FT)	PIPE INVERTS	US PIPE SIZE/MAT.	US PIPE SLOPE	DS PIPE SIZE/MAT.	DS PIPE SLOPE
A	172+58	21' LT	2	672.3	12" EXISTING	EXISTING	12" ST. SEWER SPEC.	0.3% MIN.
D	172+59	21' RT	2	672.1	12" ST. SEWER SPEC.	0.3% MIN.	12" EXISTING	EXISTING
B	172+64	21' LT	2	672.25	12" ST. SEWER SPEC.	0.3% MIN.	12" ST. SEWER PROT.	0.3% MIN.
C	172+64	21' RT	2	672.15	12" ST. SEWER PROT.	0.3% MIN.	12" ST. SEWER SPEC.	0.3% MIN.

NOTE: ALL INVERTS AND PIPE SLOPES TO BE FIELD VERIFIED. INSTALL STORM SEWER AT MAXIMUM SLOPE PERMITTED TO FLOW INTO EXISTING FIELD TILE AT THE DOWNSTREAM END. US = UPSTREAM, DS = DOWNSTREAM



**PAY LIMITS FOR CONTROLLED LOW-STRENGTH MATERIAL & WATERPROOFING MEMBRANE**  
(HATCHED AREA)

PRECAST CONCRETE BOX CULVERT AND BOX CULVERT END SECTIONS SHALL BE BACKFILLED WITH CONTROLLED LOW-STRENGTH MATERIAL IN THE REQUIRED EXCAVATED AREAS ON THE SIDES OF THE BOX CULVERT FROM THE TOP OF THE BOX CULVERT TO THE BOTTOM OF THE BOX CULVERT. THIS AREA OF CLSM IS INCLUDED IN THE CONTROLLED LOW-STRENGTH MATERIAL PAY ITEM. THE 6-INCH THICK LAYER OF POROUS GRANULAR MATERIAL REQUIRED UNDER THE PRECAST CONCRETE BOX CULVERT, ACCORDING TO SECTION 540.06 OF THE STANDARD SPECIFICATIONS, SHALL ALSO APPLY TO THE END SECTION. COST OF THIS POROUS GRANULAR MATERIAL WILL NOT BE PAID FOR SEPARATELY BUT SHALL BE INCLUDED IN THE UNIT PRICE OF THE WORK FOR WHICH IS REQUIRED.

FILE NAME = I:\Municipalities\Moultrie County\B207 CH 8 Improvements\CADD\CADD\_Civil\Phase 2\B207\_sht09\_inter-sec2400.dgn

USER NAME = rkocher	DESIGNED - CMF	REVISED -
	DRAWN - RLK	REVISED -
PLOT SCALE = 40,0000' / in.	CHECKED - CMF	REVISED -
PLOT DATE = 3/29/2024	DATE - 8/17/2022	REVISED -

**CHASTAIN & ASSOCIATES LLC**  
CONSULTING ENGINEERS

DECATUR, IL  
ROCKFORD, IL  
SCHAUMBURG, IL  
(833) 424-2782

LAFAYETTE, IN  
PADUCAH, KY  
184-001397

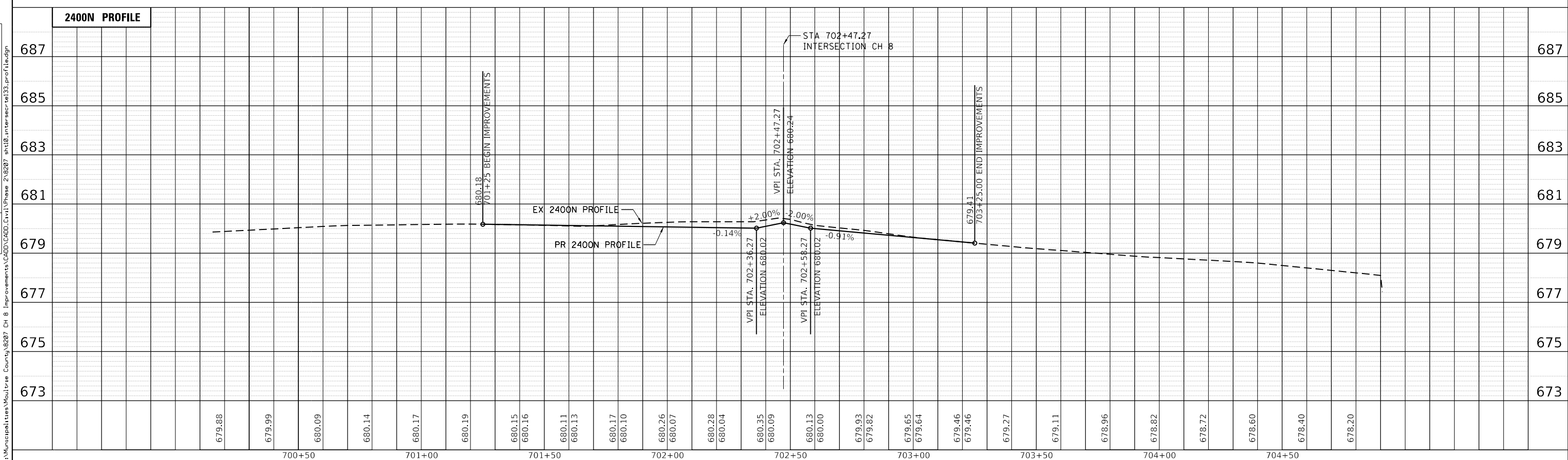
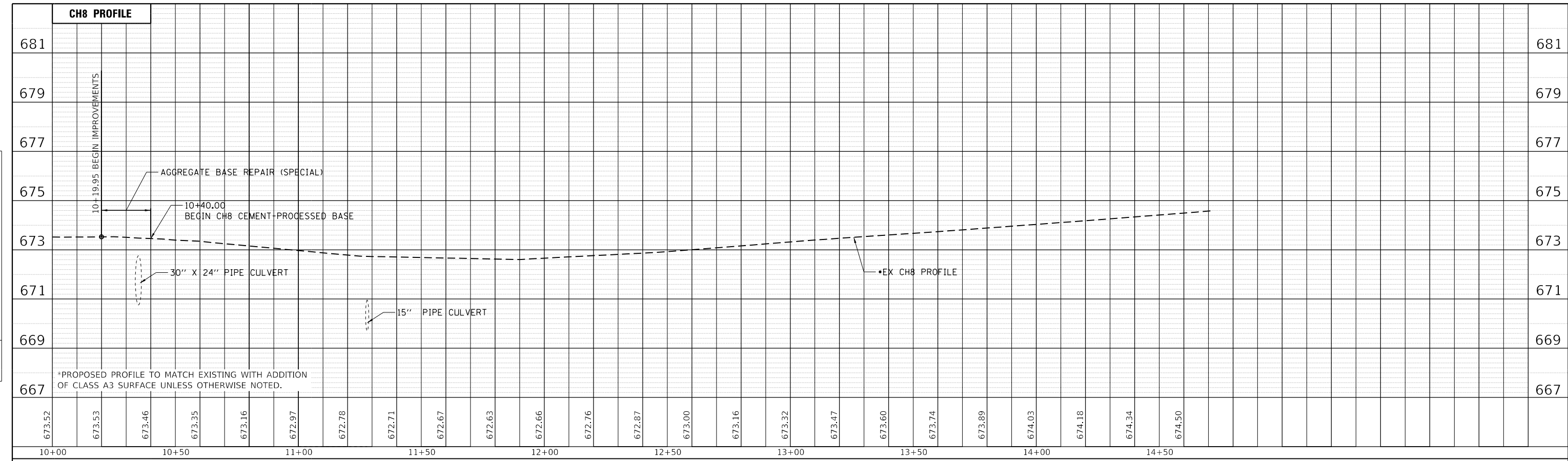
**CH 8 & 2400N INTERSECTION DETAILS**  
**COUNTY HIGHWAY 8 ROADWAY IMPROVEMENTS - MOULTRIE COUNTY**

SCALE: SHEET NO. 2 OF 2 SHEETS STA. 701+25.00 TO STA. 703+25.00

F.A.S. RTE. 659	SECTION 19-00077-01-PV	COUNTY MOULTRIE	TOTAL SHEETS 11	SHEET NO. 9
CONTRACT NO. 95964				
ILLINOIS FED. AID PROJECT				

PLAN	SURVEYED	DATE
	PLOTTED	
	GRADES CHECKED	
	STRUCTURE NOTATIONS CHECKED	
	NO.	
	NOTE BOOK	
	NO.	
	FILE NAME	

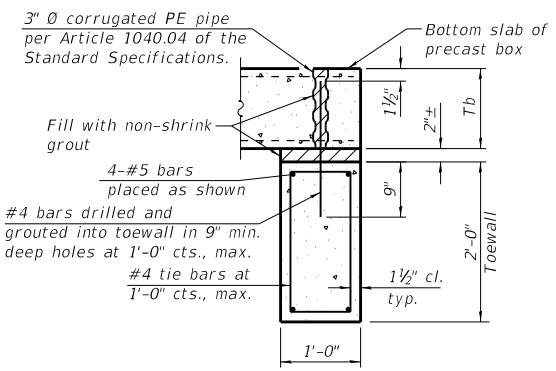
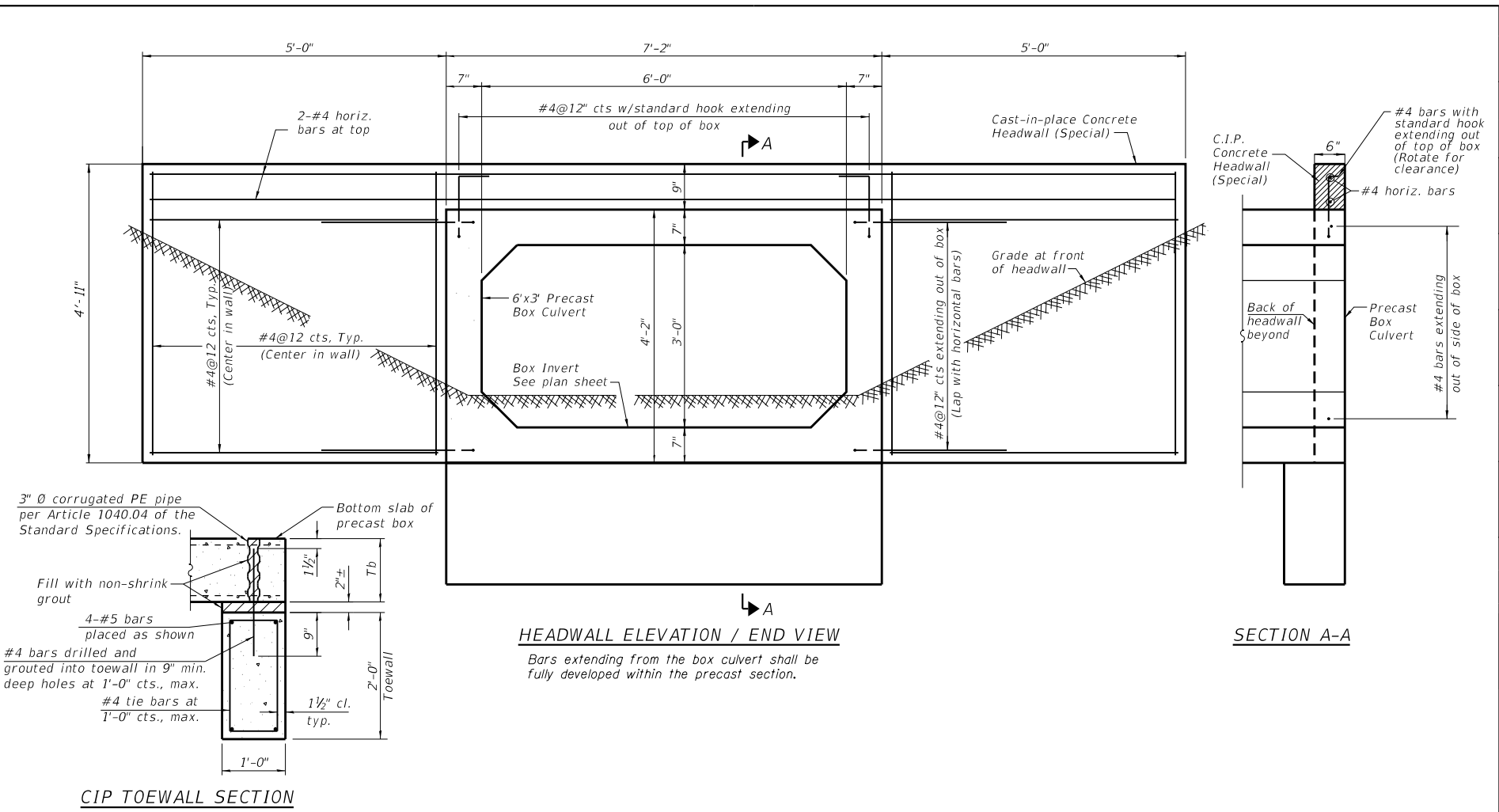
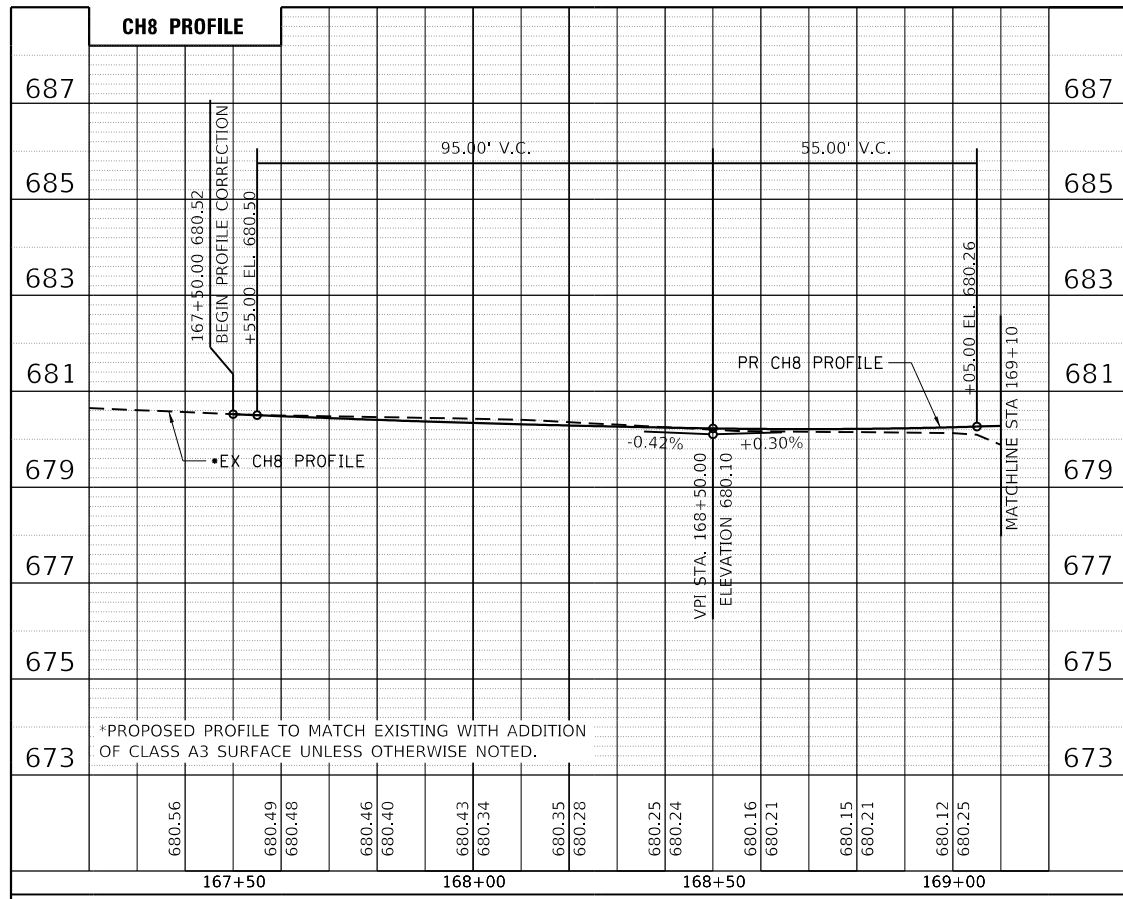
PROFILE	SURVEYED	DATE
	PLOTTED	
	GRADES CHECKED	
	STRUCTURE NOTATIONS CHECKED	
	NO.	
	NOTE BOOK	
	NO.	
	FILE NAME	



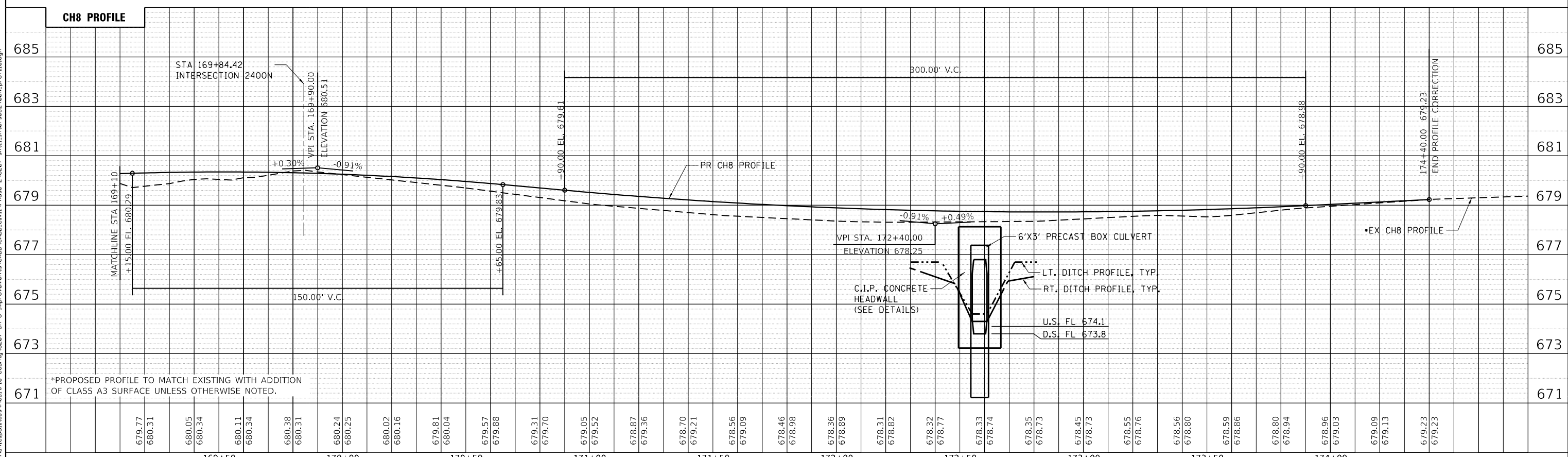
USER NAME = rkoacher	DESIGNED - CMF	REVISED -	<b>CHASTAIN &amp; ASSOCIATES LLC</b> CONSULTING ENGINEERS DECATUR, IL ROCKFORD, IL SCHAUMBURG, IL (833) 424-2782 LAFAYETTE, IN PADUCAH, KY 184-001397	<b>CH8 AT IL RTE 133 AND 2400N PROFILE</b> <b>COUNTY HIGHWAY 8 ROADWAY IMPROVEMENTS - MOULTRIE COUNTY</b>		F.A.S. RTE. 659	SECTION 19-00077-01-PV	COUNTY MOULTRIE	TOTAL SHEETS 11	SHEET NO. 10			
PLOT SCALE = 40.0000' / in.	CHECKED - CMF	REVISED -				SCALE: SHEET NO. 1 OF 2 SHEETS STA. TO STA.		CONTRACT NO. 95964		ILLINOIS FED. AID PROJECT			
PLOT DATE = 3/29/2024	DATE - 8/17/2022	REVISED -											



PLAN	SURVEYED	DATE
	PLOTTED	
	GRADES CHECKED	
	ALIGNMENT CHECKED	
	STRUCTURE NOTATIONS CHECKED	
	NO. _____	
	DATE _____	



PROFILE	SURVEYED	DATE
	PLOTTED	
	GRADES CHECKED	
	ALIGNMENT CHECKED	
	STRUCTURE NOTATIONS CHECKED	
	NO. _____	
	DATE _____	



USER NAME = rkocher		DESIGNED - CMF	REVISED -	<b>CHASTAIN &amp; ASSOCIATES LLC</b> CONSULTING ENGINEERS DECATUR, IL ROCKFORD, IL SCHAMBURG, IL (833) 424-2782 LAFAYETTE, IN PADUCAH, KY 184-001397	<b>CH8 AT 2400' PROFILE</b> <b>COUNTY HIGHWAY 8 ROADWAY IMPROVEMENTS - MOULTRIE COUNTY</b> SCALE: SHEET NO. 2 OF 2 SHEETS STA. TO STA.		F.A.S. RTE. 659	SECTION 19-00077-01-PV	COUNTY MOULTRIE	TOTAL SHEETS 11	SHEET NO. 11	
PLOT SCALE = 48.0000' / in.		CHECKED - CMF	REVISED -				CONTRACT NO. 95964		ILLINOIS FED. AID PROJECT			
PLOT DATE = 4/1/2024		DATE - 8/17/2022	REVISED -									