

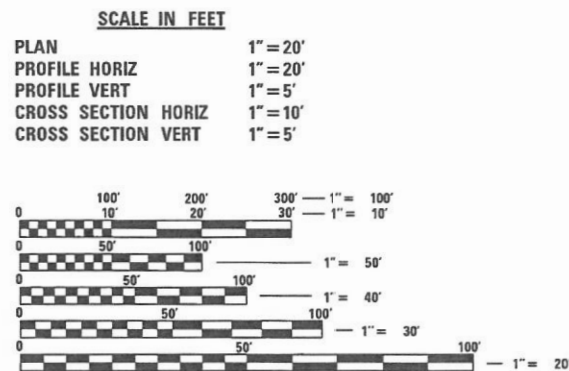
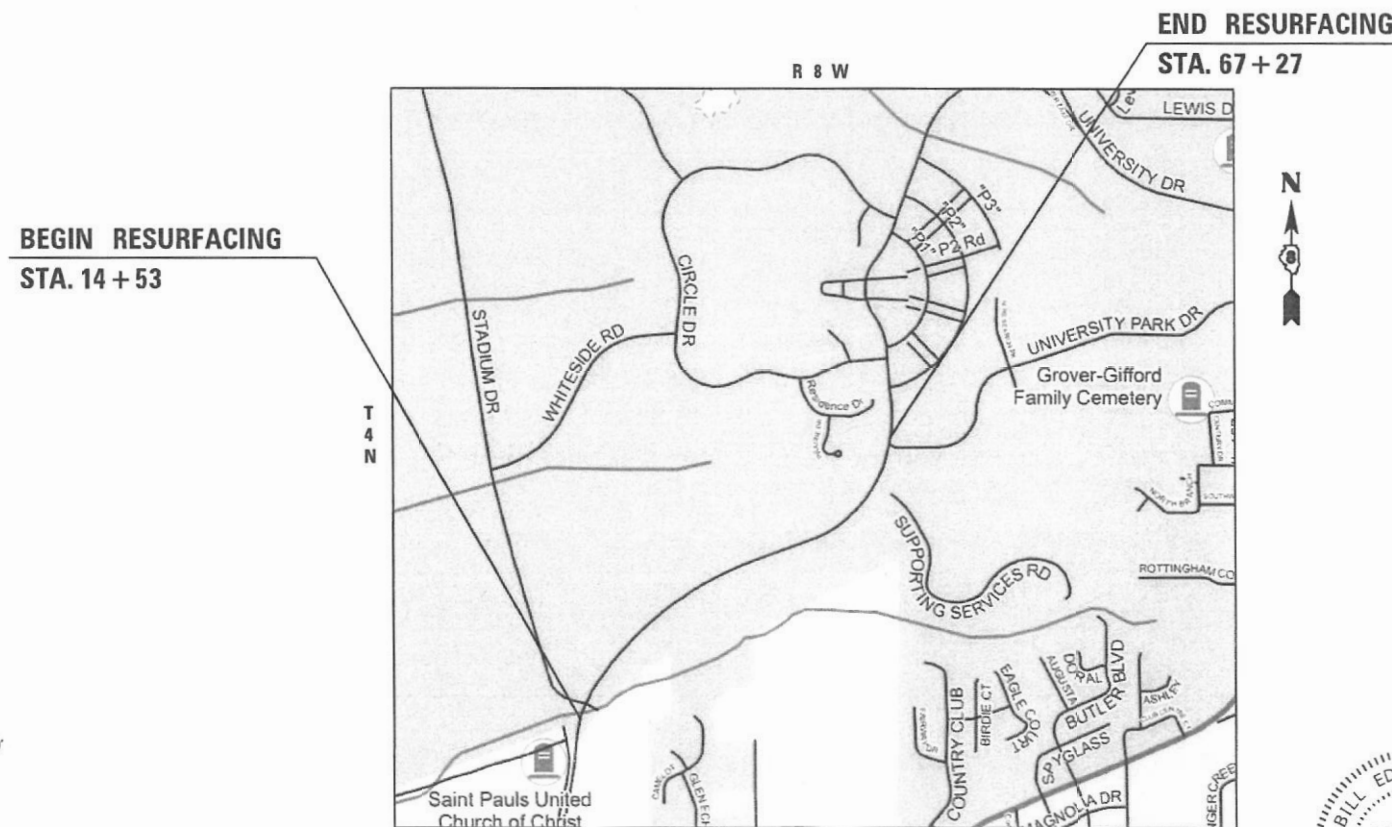
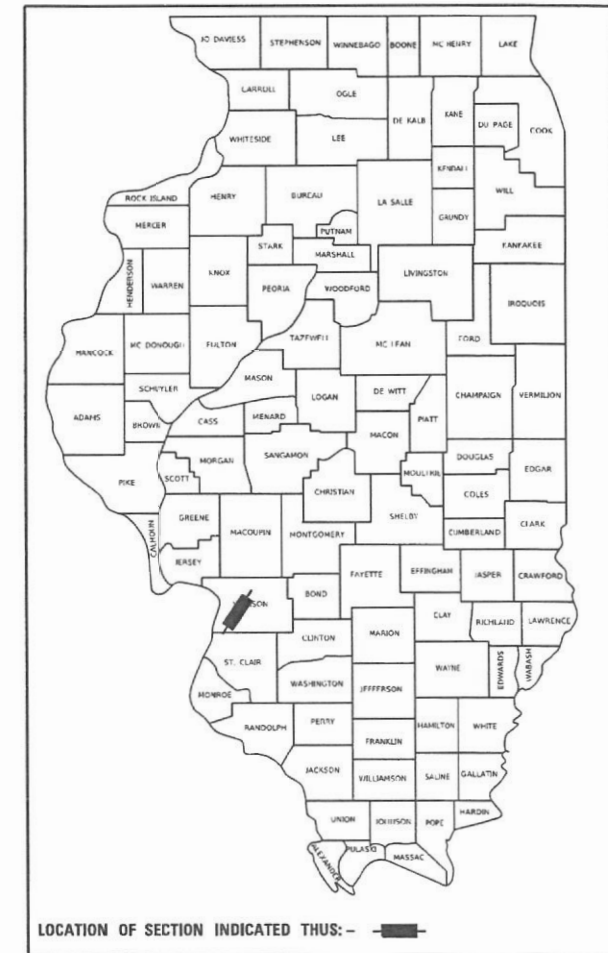
06-14-2024 LETTING ITEM 170

STATE OF ILLINOIS  
DEPARTMENT OF TRANSPORTATION

FOR INDEX OF SHEETS, SEE SHEET NO. 2

**PLANS FOR PROPOSED**  
**STP FUNDS**  
**SOUTHERN ILLINOIS UNIVERSITY EDWARDSVILLE**  
**SOUTH UNIVERSITY DRIVE RESURFACING PHASE 1**  
**FAU 8885**  
**SECTION 21-00007-00-RS**  
**MADISON COUNTY**  
**PROJECT NO. GQ1G(556)**  
**JOB NO. C-98-012-25**

F.A.U. RTE.	SECTION	COUNTY	TOTAL SHEETS	SHEET NO.
8885	21-00007-00-RS	MADISON	21	1
		ILLINOIS	CONTRACT NO. 97835	



FULL SIZE PLANS HAVE BEEN PREPARED USING STANDARD ENGINEERING SCALES. REDUCED SIZED PLANS WILL NOT CONFORM TO STANDARD SCALES. IN MAKING MEASUREMENTS ON REDUCED PLANS, THE ABOVE SCALES MAY BE USED.

J.U.L.I.E.  
JOINT UTILITY LOCATION INFORMATION FOR EXCAVATION  
1-800-892-0123  
OR 811

**DESIGN DESIGNATION**  
ROADWAY CLASSIFICATION = MINOR ARTERIAL  
DESIGN SPEED = 45 MPH  
BUILD ADT (2021) = 1,750

GROSS LENGTH = 5,274 FT = (0.999 MILE)  
NET LENGTH = 5,274 FT = (0.999 MILE)



Bill Tindall  
BILL TINDALL, P.E.  
License Expires 11/30/2025  
3/12/2024  
Date

STATE OF ILLINOIS  
DEPARTMENT OF TRANSPORTATION

APPROVED: *[Signature]* 3/18/24 DATE  
BILL RETZLAFF PHD. SUIE VICE CHANCELLOR FOR ADMINISTRATION

PASSED: 4/1/2024 DATE  
*[Signature]*  
DISTRICT 8 ENGINEER OF LOCAL ROADS & STREETS

RELEASING FOR BID BASED ON LIMITED REVIEW: 4/1/2024 DATE  
*[Signature]*  
REGION 5 ENGINEER

**OATES ASSOCIATES**

Collinsville: 100 Lanter Court, Suite 1, Collinsville, IL 62234, 618.345.2200  
 St. Louis: 720 Olive, Suite 700, St. Louis, MO 63101, 314.588.8381  
 Belleville: 20 East Main Street, Belleville, IL 62200, 618.416.4688  
 St. Charles: 330 North Main, Suite 201, St. Charles, MO 63301, 636.493.6277  
 www.oatesassociates.com  
 ILLINOIS DESIGN FIRM LICENSE NO.: 184.001115

**PRINTED BY THE AUTHORITY OF THE STATE OF ILLINOIS**

## INDEX OF SHEETS

SHEET NO.	ITEM
1	COVER SHEET
2	GENERAL NOTES
3	SUMMARY OF QUANTITIES
4-7	TYPICAL SECTIONS
8	SCHEDULES
9-10	PLAN SHEETS
11-16	TRAFFIC CONTROL SHEETS
17-18	PAVEMENT MARKING & SIGNAGE SHEETS
19-20	REMOVAL PLAN SHEET
21	CONSTRUCTION DETAILS

## HIGHWAY STANDARDS

000001-08	STANDARD SYMBOLS, ABBREVIATIONS AND PATTERNS
001001-02	AREAS OF REINFORCEMENT BARS
001006	DECIMAL OF AN INCH AND OF A FOOT
442101-09	CLASS B PATCHES
701001-02	OFF-RD OPERATIONS, 2L, 2W, MORE THAN 15' (4.5M) AWAY
701006-05	OFF-RD OPERATIONS, 2L, 2W, 15' TO 24" FROM PAVEMENT EDGE
701011-04	OFF-RD MOVING OPERATIONS, 2L 2W, DAY ONLY
701106-02	OFF-RD OPERATIONS, MULTILANE, MORE THAN 15' (4.5 M) AWAY
701901-09	TRAFFIC CONTROL DEVICES
720001-01	SIGN PANEL MOUNTING DETAILS
720006-04	SIGN PANEL ERECTION DETAILS
728001-01	TELESCOPING STEEL SIGN SUPPORT
780001-05	TYPICAL PAVEMENT MARKINGS
781001-04	TYPICAL APPLICATIONS RAISED REFLECTIVE PAVEMENT MARKERS

## GENERAL NOTES

### UTILITIES

- THE FOLLOWING UTILITY COMPANIES MAY HAVE FACILITIES LOCATED WITHIN THE LIMITS OF CONSTRUCTION WHICH MAY REQUIRE ADJUSTMENT, RELOCATION OR REMOVAL. REFER TO THE "STATUS OF UTILITIES TO BE ADJUSTED" SPECIAL PROVISION FOR ADDITIONAL INFORMATION.

ADB COMPANIES  
18777 HISTORIC RTE 66  
PACIFIC, MO 63069  
(314) 426-5200

AMEREN IP SOUTH (GAS AND ELECTRIC)  
2600 NORTH CENTER  
MARYVILLE, IL 62062  
(618) 301-5327

AT&T DISTRIBUTION  
203 GOETHE STREET  
COLLINSVILLE, IL 62234  
(618) 346-6400

CHARTER COMMUNICATIONS  
815 CHARTER COMMONS  
TOWN & COUNTRY, MO 63017  
(314) 393-5028

CITY OF EDWARDSVILLE (WATER AND SEWER)  
200 EAST PARK STREET  
EDWARDSVILLE, IL 62025  
(618) 692-7535

MCI/VERIZON  
7000 WESTON PARKWAY  
CARY, NC 27513  
(800) 840-0338

SOUTHERN ILLINOIS UNIVERSITY-EDWARDSVILLE  
CAMPUS BOX 1039  
EDWARDSVILLE, IL 62026  
(618) 650-3477

KEN DAVIS, IDOT D8 ELECTRICAL SERVICES SUPERVISOR  
1102 EASTPORT PLAZA DRIVE  
COLLINSVILLE, IL 62234  
(618) 346-3274

## GENERAL CONSTRUCTION

- THE CONTRACTOR SHALL VERIFY ALL DIMENSIONS AND CONDITIONS IN THE FIELD PRIOR TO ORDERING MATERIALS AND COMMENCING CONSTRUCTION.
- THE CONTRACTOR SHALL CONFINE ALL OPERATIONS TO THE CONSTRUCTION LIMITS LINE SHOWN ON THE PLANS. ANY AREA DISTURBED BEYOND THESE LIMITS SHALL BE RESTORED TO ITS ORIGINAL CONDITION AT THE CONTRACTOR'S EXPENSE.

## PAVING

- THE CONTRACTOR SHALL NOTE THE LOCATION OF ALL MANHOLE AND VALVE COVER FRAMES AND LIDS LOCATED WITHIN RESURFACING LIMITS. APPROPRIATE CARE SHALL BE TAKEN TO PROTECT THESE ITEMS DURING MILLING OPERATIONS.

## APPROXIMATE QUANTITIES, SYMBOLS & ABBREVIATIONS

- THE FOLLOWING ITEMS AND APPROXIMATE QUANTITIES ARE INCLUDED IN THE "SUMMARY OF QUANTITIES" IN ORDER TO ESTABLISH A UNIT COST FOR WORK WHICH MAY BE REQUIRED TO CONSTRUCT THIS SECTION. THE ACTUAL QUANTITY OF EACH ITEM SHALL BE DETERMINED BY THE ENGINEER IN THE FIELD.

CLASS B PATCHES, TYPE II 9 INCH	174 SQ YD
CLASS B PATCHES, TYPE III, 9 INCH	174 SQ YD
CLASS B PATCHES, TYPE IV, 9 INCH	174 SQ YD
CLASS B PATCH EXPANSION JOINT	132 FOOT
DEFORMED BARS EXPANSION JOINT	110 EACH
DOWEL BARS 1 1/4"	270 EACH
TIE BARS 1 1/4"	270 EACH
SAW CUTS	1,435 FOOT

- THE FOLLOWING SYMBOLS, ABBREVIATIONS AND PATTERNS SUPPLEMENT OR SUPERCEDE HIGHWAY STANDARD 000001:

BO	BY OTHERS (USED IN CONJUNCTION WITH TBA & TBR)
CONSTR	CONSTRUCTION
CP	CONTROL POINT
ESMT	EASEMENT
ELEV	ELEVATION
K	LENGTH OF VERTICAL CURVE PER PERCENT GRADE DIFFERENCE
N/F	NOW OR FORMERLY
O/C	OIL AND CHIP
PERM	PERMANENT
PVI	POINT OF VERTICAL INTERSECTION
PVC	POLYVINYL CHLORIDE PIPE
TCE	TEMPORARY CONSTRUCTION EASEMENT
TUP	TEMPORARY USE PERMIT
TBA	TO BE ADJUSTED
TBRL	TO BE RELOCATED
TYP	TYPICAL
W	WIDTH

## COMMITMENTS

- NONE. 10/17/23

## EMERGENCY CONTACTS

SIUE POLICE  
(618)-650-3324

EDWARDSVILLE FIRE DEPARTMENT  
(618)-692-7543

## MIXTURES TABLE

LOCATION(S):	FAU 8885
MIXTURE USE(S):	HOT-MIX ASPHALT SURFACE COURSE
PG:	PG 64-22
DESIGN AIR VOIDS:	4.0% @ Ndes=70
MIXTURE COMPOSITION:	IL-9.5
FRICTION AGG:	MIXTURE "C"
MIXTURE WEIGHT:	112.0 LB/SQ YD/IN
QUALITY MANAGEMENT PROGRAM:	QC/QA
SUBLOT SIZE:	N/A
MATERIAL TRANSFER DEVICE (REQUIRED?)	NO

MODEL: Cover Sheet  
FILE NAME: 10113063 - SIUE Dr-Call ServicesWO 38 - S. University Drive - Phase 1\CADD\Microstation\CADD Drawings\0819063\028-shc-genotes.dgn



USER NAME = bill.tindall	DESIGNED -	REVISED -
PLOT SCALE = 100.0000 ' / in.	DRAWN -	REVISED -
PLOT DATE = 3/12/2024	CHECKED -	REVISED -
	DATE -	REVISED -

**SOUTHERN ILLINOIS UNIVERSITY**  
**EDWARDSVILLE**

### GENERAL NOTES

SCALE: SHEET 1 OF 1 SHEETS STA. TO STA.

F.A.U. RTE.	SECTION	COUNTY	TOTAL SHEETS	SHEET NO.
8885	21-00007-00-R5	MADISON	21	2
ILLINOIS FED. AID PROJECT			CONTRACT NO. 97835	

SI	SP	CODE NO.	ITEM	UNIT	TOTAL QUANTITY
		40600370	LONGITUDINAL JOINT SEALANT	FOOT	5,715
		40600990	TEMPORARY RAMP	SQ YD	346
		40604052	HOT-MIX ASPHALT SURFACE COURSE, IL-9.5, MIX "C", N70	TON	1,736
		44200956	CLASS B PATCHES, TYPE II, 9 INCH	SQ YD	174
		44200962	CLASS B PATCHES, TYPE III, 9 INCH	SQ YD	174
		44200964	CLASS B PATCHES, TYPE IV, 9 INCH	SQ YD	174
		44201294	CLASS B PATCH - EXPANSION JOINT	FOOT	132
		44201296	DEFORMED BARS - EXPANSION JOINT	EACH	110
		44201298	DOWEL BARS 1 1/4"	EACH	270
	*	44213208	TIE BARS 1 1/4"	EACH	270
		44213200	SAW CUTS	FOOT	1,435
		67100100	MOBILIZATION	L SUM	1
		70300150	SHORT TERM PAVEMENT MARKING REMOVAL	SQ FT	5,009
		70307120	TEMPORARY PAVEMENT MARKING - LINE 4" - TYPE IV TAPE	FOOT	15,342
		72400100	REMOVE SIGN PANEL ASSEMBLY - TYPE A	EACH	21

SI	SP	CODE NO.	ITEM	UNIT	TOTAL QUANTITY
*		72000100	SIGN PANEL - TYPE 1	SQ FT	143
*		72800100	TELESCOPING STEEL SIGN SUPPORT	FOOT	336
*		78000200	THERMOPLASTIC PAVEMENT MARKING - LINE 4"	FOOT	11,819
*		78100100	RAISED REFLECTIVE PAVEMENT MARKER	EACH	66
		78300200	RAISED REFLECTIVE PAVEMENT MARKER REMOVAL	EACH	66
*		X1500004	BITUMINOUS SURFACE TREATMENT, A1	SQ YD	15,500
*		X4202010	PROFILE DIAMOND GRINDING CONCRETE PAVEMENT	SQ YD	295
*		X4400157	HOT-MIX ASPHALT SURFACE REMOVAL, 2" (SPECIAL)	SQ YD	15,500
*		X4423012	DOWEL BARS 1 1/4" RETROFIT	EACH	240
*		X7010216	TRAFFIC CONTROL AND PROTECTION, (SPECIAL)	L SUM	1

NOTES: SP - SEE PROJECT SPECIFIC SPECIAL PROVISIONS  
SI - SPECIALTY ITEM

MODEL: Default  
FILE NAME: I:\119063 - Site Or-Call Services\119063 - Site Or-Call Services\119063 - Phase 1\CADD\Microstation\CADD Drawings\119063-028-119063.dgn



USER NAME = bill.tindall  
DESIGNED -  
DRAWN -  
PLOT SCALE = 40.0000 ' / in.  
CHECKED -  
DATE = 3/12/2024

DESIGNED -  
DRAWN -  
CHECKED -  
DATE -

REVISED -  
REVISED -  
REVISED -  
REVISED -

**SOUTHERN ILLINOIS UNIVERSITY  
EDWARDSVILLE**

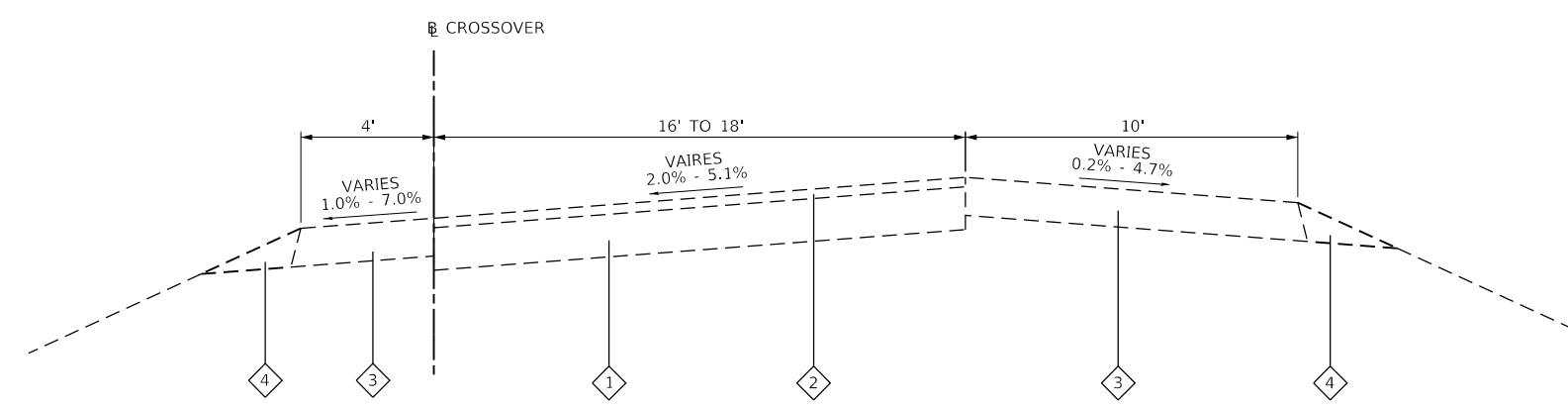
**SUMMARY OF QUANTITIES**

SCALE: SHEET 1 OF 1 SHEETS STA. TO STA.

F.A.U. RTE.	SECTION	COUNTY	TOTAL SHEETS	SHEET NO.
8885	21-00007-00-RS	MADISON	21	3
CONTRACT NO. 97835				
ILLINOIS FED. AID PROJECT				

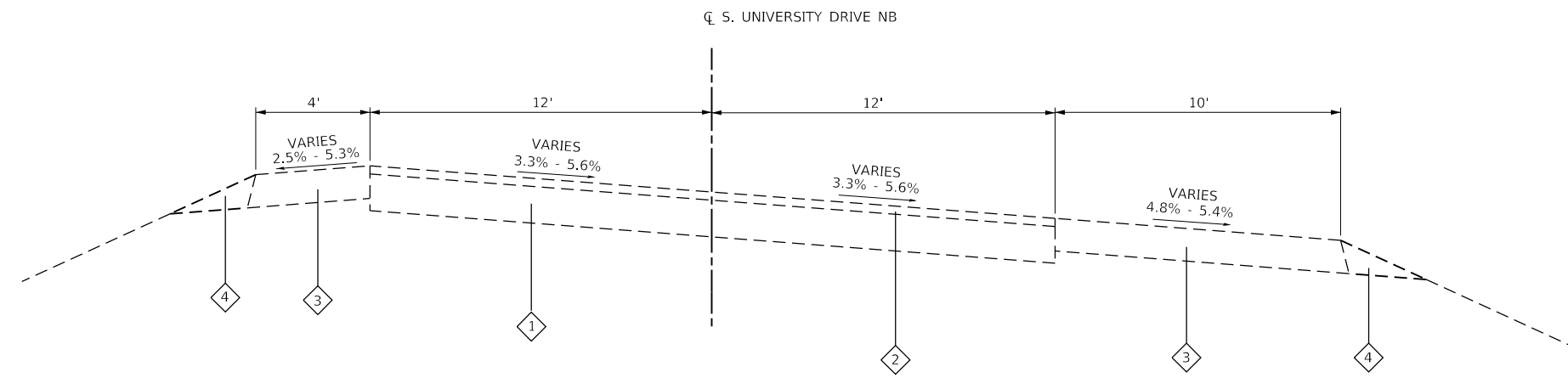
**TYPICAL SECTION LEGEND**

- 1 EXISTING PCC PAVEMENT, 9"
- 2 EXISTING HOT-MIX ASPHALT SURFACE COURSE, 2"
- 3 EXISTING HOT-MIX ASPHALT SHOULDERS, 8"
- 4 EXISTING AGGREGATE WEDGE SHOULDERS, TYPE B



**EXISTING TYPICAL SECTION**

CROSS-OVER: 2 & 4



**EXISTING S. UNIVERSITY DRIVE NB**

STA 14+53 TO STA 34+00

MODEL: Default  
 FILE NAME: I:\19063 - SUE Or-Call Services\19038 - S. University Drive - Phase 1\CADD\Microstation\CADD Drawings\0819063.028-typical.dgn  
 ILLINOIS DESIGN FIRM LICENSE NO.: 184.001115



USER NAME = bill.tindall	DESIGNED -	REVISED -
PLOT SCALE = 40.0000' / in.	DRAWN -	REVISED -
PLOT DATE = 3/12/2024	CHECKED -	REVISED -
	DATE -	REVISED -

**SOUTHERN ILLINOIS UNIVERSITY  
EDWARDSVILLE**

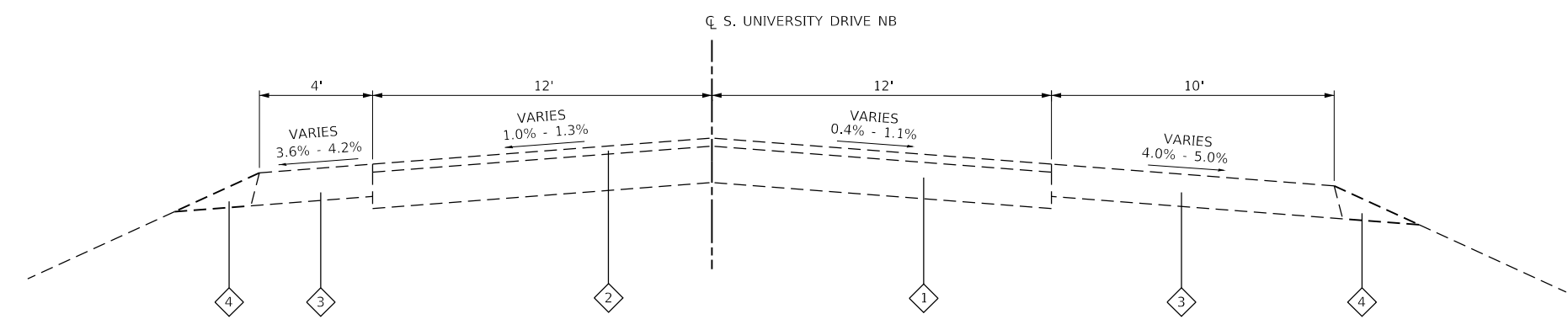
**EXISTING  
TYPICAL SECTIONS**

SCALE: NTS    SHEET 1    OF 4    SHEETS    STA.    TO STA.

F.A.U. RTE.	SECTION	COUNTY	TOTAL SHEETS	SHEET NO.
8885	21-00007-00-RS	MADISON	21	4
CONTRACT NO. 97835				
ILLINOIS FED. AID PROJECT				

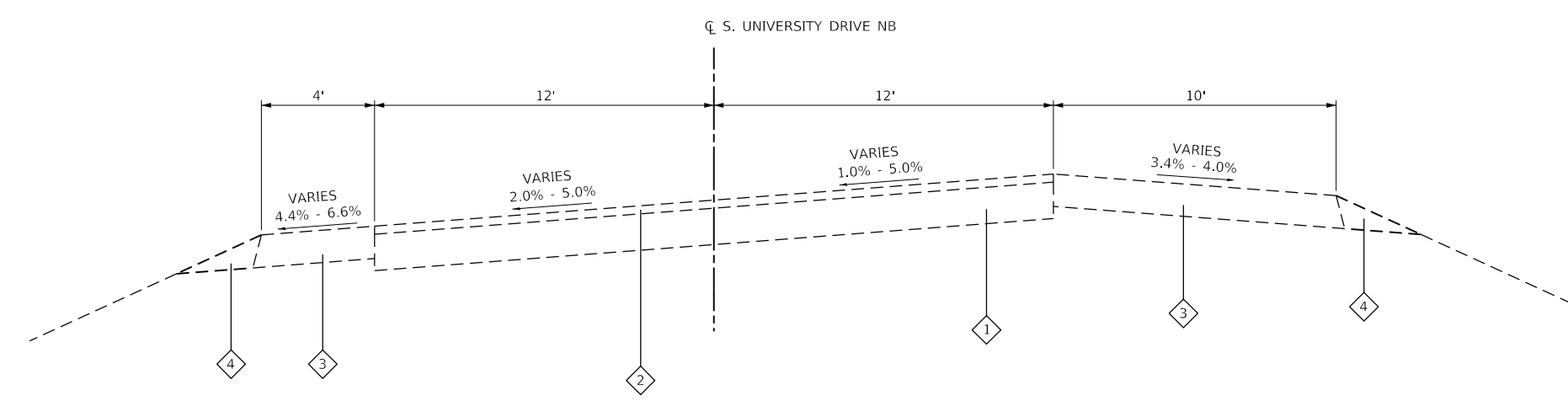
**TYPICAL SECTION LEGEND**

- 1 EXISTING PCC PAVEMENT, 9"
- 2 EXISTING HOT-MIX ASPHALT SURFACE COURSE, 2"
- 3 EXISTING HOT-MIX ASPHALT SHOULDERS, 8"
- 4 EXISTING AGGREGATE WEDGE SHOULDERS, TYPE B



**EXISTING S. UNIVERSITY DRIVE NB**

STA 34+00 TO STA 53+00



**EXISTING S. UNIVERSITY DRIVE NB**

STA 53+00 TO STA 67+27

MODEL: Default  
 FILE NAME: I:\11063 - SUE OR-CALL Services\11063 - S. University Drive - Phase 1\CADD\Microstation\CADD Drawings\0819063.028-shc-typical.dgn  
 ILLINOIS DESIGN FIRM LICENSE NO.: 184.001115



USER NAME = bill.tindall	DESIGNED -	REVISED -
PLOT SCALE = 40.0000' / in.	DRAWN -	REVISED -
PLOT DATE = 3/12/2024	CHECKED -	REVISED -
	DATE -	REVISED -

**SOUTHERN ILLINOIS UNIVERSITY  
EDWARDSVILLE**

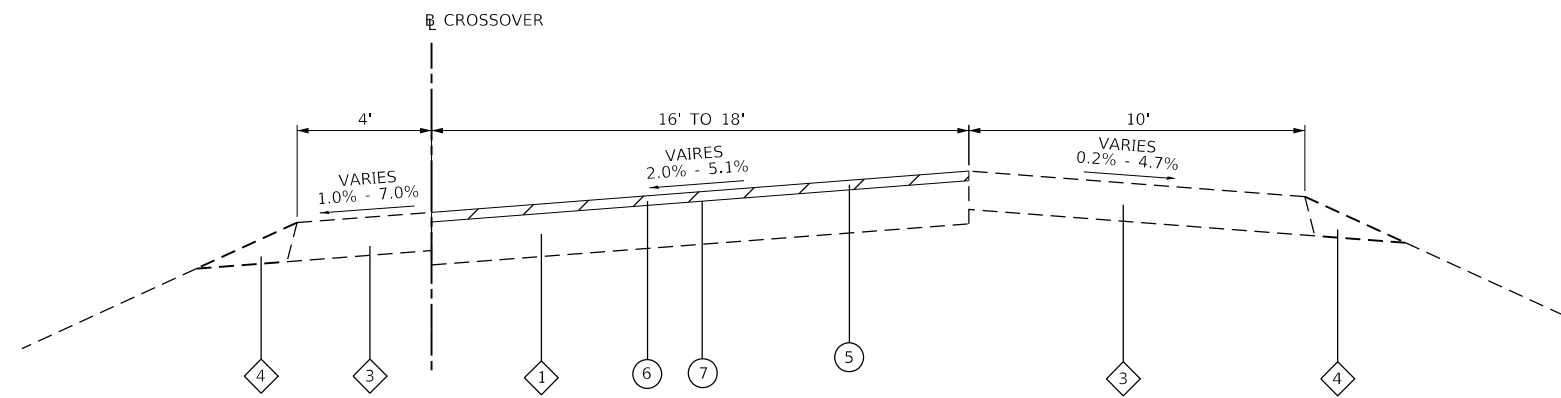
**EXISTING  
TYPICAL SECTIONS**

SCALE: NTS      SHEET 2      OF 4      SHEETS      STA.      TO STA.

F.A.U. RTE.	SECTION	COUNTY	TOTAL SHEETS	SHEET NO.
8885	21-00007-00-R5	MADISON	21	5
CONTRACT NO. 97835				
ILLINOIS FED. AID PROJECT				

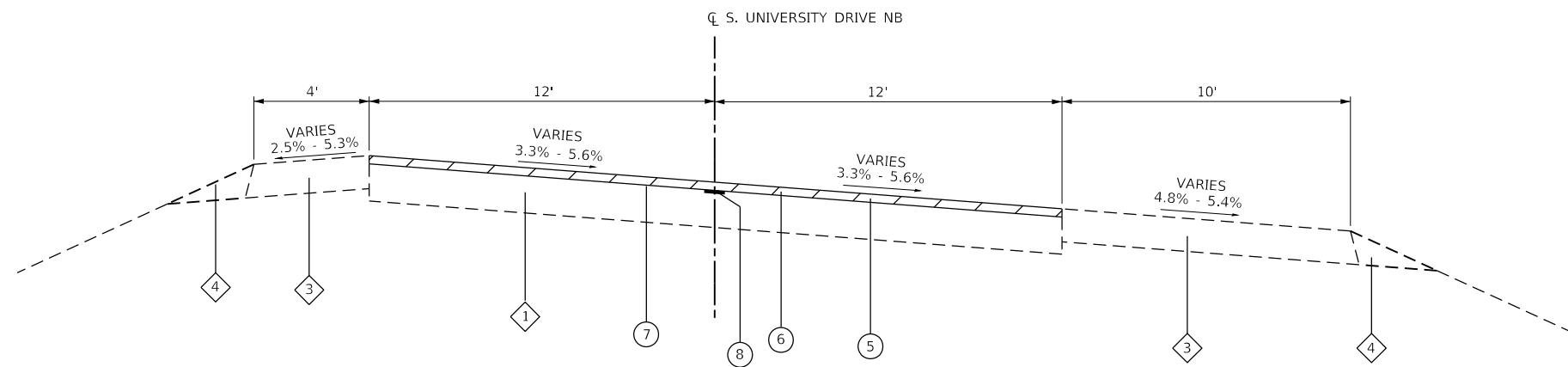
**TYPICAL SECTION LEGEND**

- 1 EXISTING PCC PAVEMENT, 9"
- 2 EXISTING HOT-MIX ASPHALT SURFACE COURSE, 2"
- 3 EXISTING HOT-MIX ASPHALT SHOULDERS, 8"
- 4 EXISTING AGGREGATE SHOULDERS, TYPE B
- 5 PROPOSED HMA SURFACE REMOVAL, 2" (SPECIAL)
- 6 PROPOSED HOT-MIX ASPHALT SURFACE COURSE, MIX "C". 1L-9.5. N70, 2"
- 7 PROPOSED BITUMINOUS SURFACE TREATMENT, A1
- 8 PROPOSED LONGITUDINAL JOINT SEALANT (LJS)



**PROPOSED TYPICAL SECTION**

CROSS-OVER: 2 & 4



**PROPOSED S. UNIVERSITY DRIVE NB**

STA 14+53 TO STA 34+00

MODEL: Default  
 FILE NAME: I:\19063 - SUE Or-Call Services\19038 - S. University Drive - Phase 1\CADD\Microstation\CADD Drawings\0819063.028-typical.dgn  
 ILLINOIS DESIGN FIRM LICENSE NO.: 184.001115



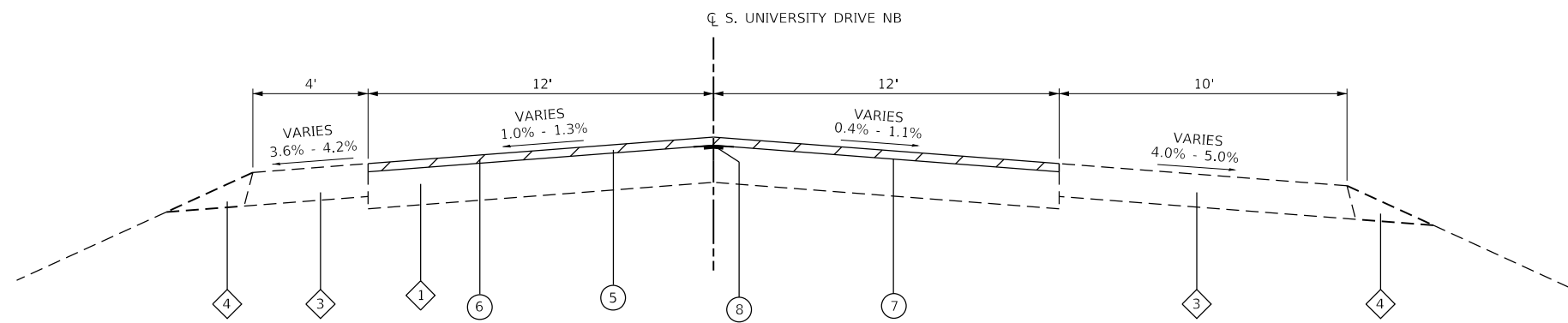
USER NAME = bill.tindall	DESIGNED -	REVISED -
PLOT SCALE = 40.0000 ' / in.	DRAWN -	REVISED -
PLOT DATE = 3/12/2024	CHECKED -	REVISED -
	DATE -	REVISED -

**SOUTHERN ILLINOIS UNIVERSITY  
EDWARDSVILLE**

**PROPOSED  
TYPICAL SECTIONS**

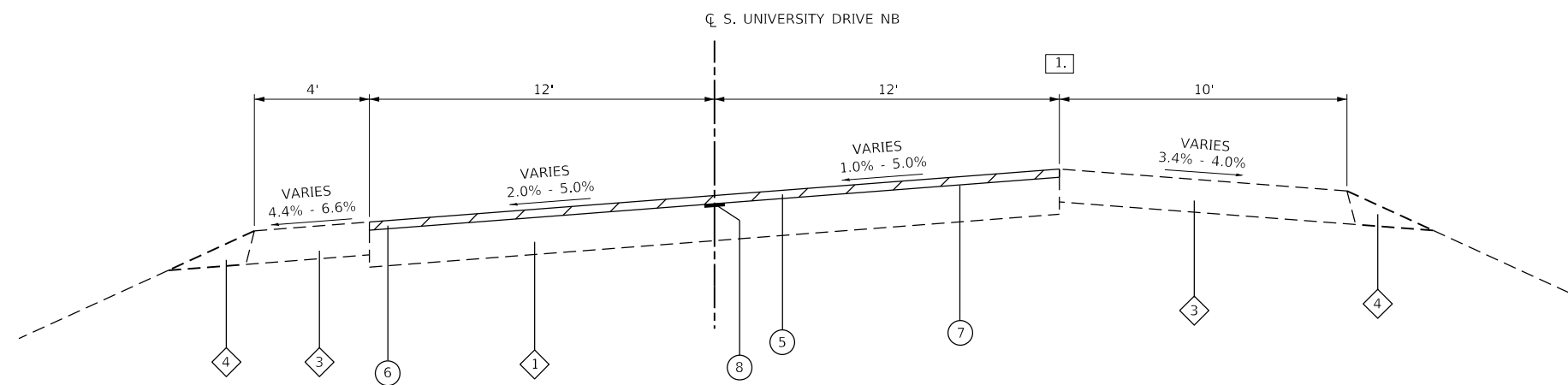
SCALE: NTS SHEET 3 OF 4 SHEETS STA. TO STA.

F.A.U. RTE.	SECTION	COUNTY	TOTAL SHEETS	SHEET NO.
8885	21-00007-00-RS	MADISON	21	6
CONTRACT NO. 97835				
ILLINOIS FED. AID PROJECT				



**PROPOSED S. UNIVERSITY DRIVE NB**

STA 34+00 TO STA 53+00



**PROPOSED S. UNIVERSITY DRIVE NB**

STA 53+00 TO STA 67+27

**TYPICAL SECTION LEGEND**

- 1 EXISTING PCC PAVEMENT, 9"
- 2 EXISTING HOT-MIX ASPHALT SURFACE COURSE, 2"
- 3 EXISTING HOT-MIX ASPHALT SHOULDERS, 8"
- 4 EXISTING AGGREGATE SHOULDERS, TYPE B
- 5 PROPOSED HMA SURFACE REMOVAL, 2" (SPECIAL)
- 6 PROPOSED HOT-MIX ASPHALT SURFACE COURSE, MIX "C". IL-9.5. N70, 2"
- 7 PROPOSED BITUMINOUS SURFACE TREATMENT, A1
- 8 PROPOSED LONGITUDINAL JOINT SEALANT (LJS)

**NOTES**

- 1 RESURFACING LIMITS INCLUDE SLIP LANE FROM STA 60+32 RT TO STA 63+07 RT. SEE PLAN SHEETS.

MODEL: Default  
 FILE NAME: I:\19063 - SUE Or-Call Services\19063 - S. University Drive - Phase 1\CADD\Microstation\CADD Drawings\0819063.028-shc-typical.dgn  
 ILLINOIS DESIGN FIRM LICENSE NO.: 184.001115



USER NAME = bill.tindall	DESIGNED -	REVISED -
PLOT SCALE = 40.0000' / in.	DRAWN -	REVISED -
PLOT DATE = 3/12/2024	CHECKED -	REVISED -
	DATE -	REVISED -

**SOUTHERN ILLINOIS UNIVERSITY  
EDWARDSVILLE**

**PROPOSED  
TYPICAL SECTIONS**

SCALE: NTS SHEET 4 OF 4 SHEETS STA. TO STA.

F.A.U. RTE.	SECTION	COUNTY	TOTAL SHEETS	SHEET NO.
8885	21-00007-00-RS	MADISON	21	7
CONTRACT NO. 97835				
ILLINOIS FED. AID PROJECT				

PAVEMENT SCHEDULE

STATION	STATION	OFFSET	LONG JOINT SEALANT	TEMPORARY RAMP	HMA SC IL-9.5 "C" N70	BIT SURF TREATMENT A1	HMA SURF REM 2 SPL
			(FOOT)	(SQ YD)	(TON)	(SQ YD)	(SQ YD)
SOUTH UNIVERSITY DR. NB							
14+53	24+50	CL	997		297	2,669	2,669
24+50	38+00	CL	1,350		403	3,610	3,610
38+00	42+00	CL	400		125	1,120	1,120
CROSSOVER 2							
39+25	40+86	LT	88		66	505	505
SOUTH UNIVERSITY DR. NB.							
42+00	52+50	CL	1,050		319	2,853	2,853
52+50	60+00	LT/RT	750	144	225	2,055	2,055
60+00	64+00	CL	400		123	1,077	1,077
CROSSOVER 4							
60+32	63+32	LT/RT	353	112	80	728	728
SOUTH UNIVERSITY DR. NB.							
64+00	67+27	LT/RT	327	90	98	883	883
TOTAL			5,715	346	1,736	15,500	15,500

PAVEMENT NOTES:

- TEMPORARY RAMP QUANTITY REDUCED SINCE TRAFFIC IS DETOURED. QUANTITY INCLUDED IS FOR NORTH OF SUPPORTING SERVICES DRIVE ONLY.

SIGN SCHEDULE

STATION	OFFSET	TYPE	DESCRIPTION	SIZE	REM SIN PAN ASSY TA	SIGN PANEL T1	TELES STL SIN SUPPORT
				(IN X IN)	(EACH)	(SQ FT)	(FOOT)
15+53	RT	R6-2	ONE WAY	24X30	1	5	16
15+83	RT	R5-XY	NO THRU TRUCKS	24X30	1	5	16
16+56	RT	R2-1	SPEED LIMIT 45	30X36	1	8	16
	LT	R2-1	SPEED LIMIT 45	30X36	1	8	16
26+26	RT	R2-1	SPEED LIMIT 45	30X36	1	8	16
	LT	R2-1	SPEED LIMIT 45	30X36	1	8	16
40+75	LT	R1-2	YIELD	36X36X36	1	4	16
46+24	RT	R2-5c	SPEED ZONE AHEAD	9X18	1	2	14
	LT	R2-5c	SPEED ZONE AHEAD	9X18	1	2	14
51+27	RT	R2-1	SPEED LIMIT 35	30X36	1	8	16
	LT	R2-1	SPEED LIMIT 35	30X36	1	8	16
54+37	LT	W4-1	MERGE	36X36	1	9	17
56+52	RT	R2-1	SPEED LIMIT 25	30X36	1	8	16
	LT	R2-1	SPEED LIMIT 25	30X36	1	8	16
	RT	R5-1a	WRONG WAY	42X30	1	9	17
	LT	R5-1a	WRONG WAY	42X30	1	9	17
58+92	LT	R5-1a	DO NOT ENTER	36X36	1	9	17
63+89	LT	R1-2	YIELD	36X36X36	1	4	16
64+58	RT	R2-1	SPEED LIMIT 25	30X36	1	8	16
	LT	R2-1	SPEED LIMIT 25	30X36	1	8	16
66+11	LT	R6-2	ONE WAY	24X30	1	5	16
TOTAL					21	143	336

PAVEMENT MARKING SCHEDULE

STATION	STATION	OFFSET	DESCRIPTION	SHRT TRM PAVT MK REM	TMP PVT MK L4 T4 TAPE	THPL PVT MK LINE 4	RAISED REFLT PAVT MKR	RAISED REFLT PAVT REM
				(SQ FT)	(FOOT)	(FOOT)	(EACH)	(EACH)
COUNTRY CLUB DR TO CIRCLE DR (SB)				TAPE- SEE TRAFFIC CONTROL SHEETS	5,009	15,342		
14+53	25+00	LT	YELLOW EDGE LINE			928		
14+53	25+00	RT	WHITE EDGE LINE			1,042		
14+53	25+00	CL	WHITE SKIP DASH CENTERLINE			270	13	13
25+00	38+00	LT	YELLOW EDGE LINE			1,224		
25+00	38+00	RT	WHITE EDGE LINE			1,296		
25+00	38+00	CL	WHITE SKIP DASH CENTERLINE			330	17	17
38+00	52+33	LT	YELLOW EDGE LINE			1,720		
38+00	52+33	RT	WHITE EDGE LINE			1,693		
38+00	52+33	CL	WHITE SKIP DASH CENTERLINE			360	17	17
52+33	67+27	LT	YELLOW EDGE LINE			1,170		
52+33	67+27	RT	WHITE EDGE LINE			1,406		
52+33	67+27	CL	WHITE SKIP DASH CENTERLINE			380	19	19
TOTAL				5,009	15,342	11,819	66	66

DOWEL BAR RETROFIT SCHEDULE

STATION	STATION	NOTES	PROF DMD GRND CON PVT	DOWEL BARS 1 1/4" RET
			(SQ YD)	(EACH)
16+09	16+36	5 BARS/JT	72	30
17+53	17+62	5 BARS/JT	24	20
23+26	23+35	5 BARS/JT	24	20
27+25	27+31	5 BARS/JT	16	20
30+25	30+31	5 BARS/JT	16	20
42+27	42+33	5 BARS/JT	16	20
47+29	47+35	5 BARS/JT	16	20
48+28	48+34	5 BARS/JT	16	20
49+28	49+34	5 BARS/JT	16	20
54+12	54+36	5 BARS/JT	63	30
64+27	64+33	5 BARS/JT	16	20
TOTAL			295	240

MODEL: Default  
 FILE NAME: I:\19063 - SUIE Dr-Call Services\WO 38 - S. University Drive - Phase 1\CADD\Microstation\CADD Drawings\0819063.028-shc-schedule.dgn  
 ILLINOIS DESIGN FIRM LICENSE NO.: 184.001115



USER NAME = bill.tindall	DESIGNED -	REVISED -
PLOT SCALE = 40.0000 ' / in.	DRAWN -	REVISED -
PLOT DATE = 4/11/2024	CHECKED -	REVISED -
	DATE -	REVISED -

**SOUTHERN ILLINOIS UNIVERSITY  
EDWARDSVILLE**



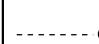

**SCHEDULES**

SCALE: NTS SHEET 1 OF 1 SHEETS STA. TO STA.

F.A.U. RTE.	SECTION	COUNTY	TOTAL SHEETS	SHEET NO.
8885	21-0007-00-R5	MADISON	21	8
CONTRACT NO. 97835				
ILLINOIS FED. AID PROJECT				



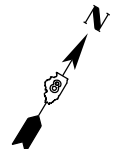
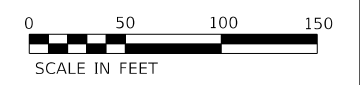
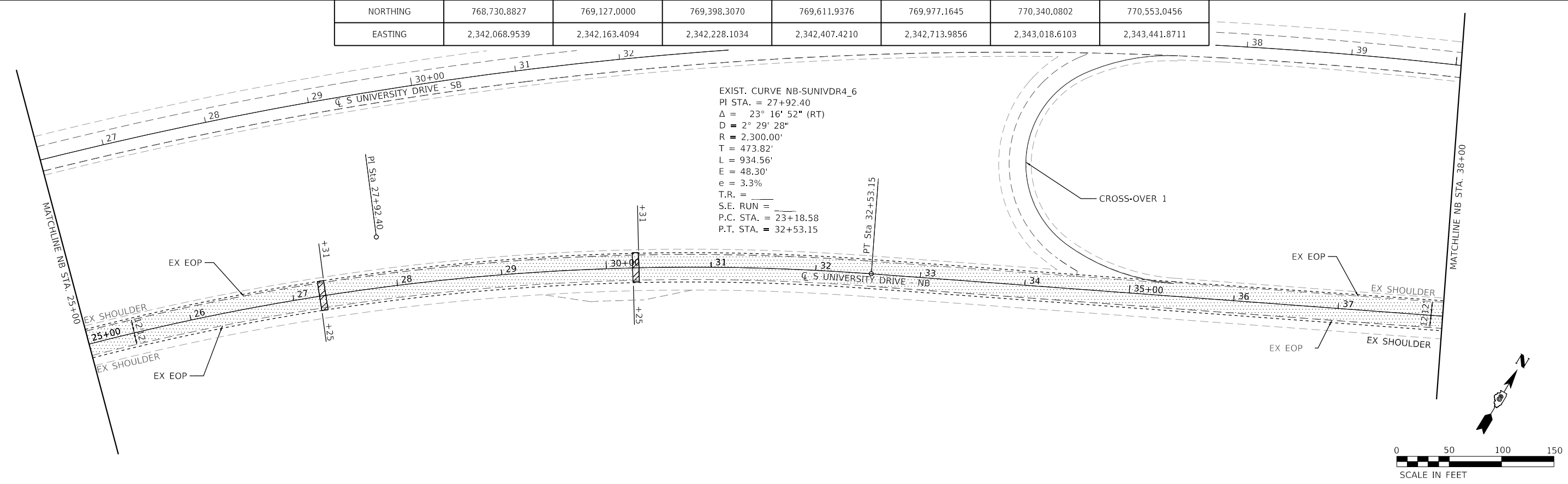
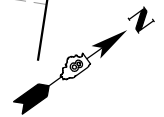
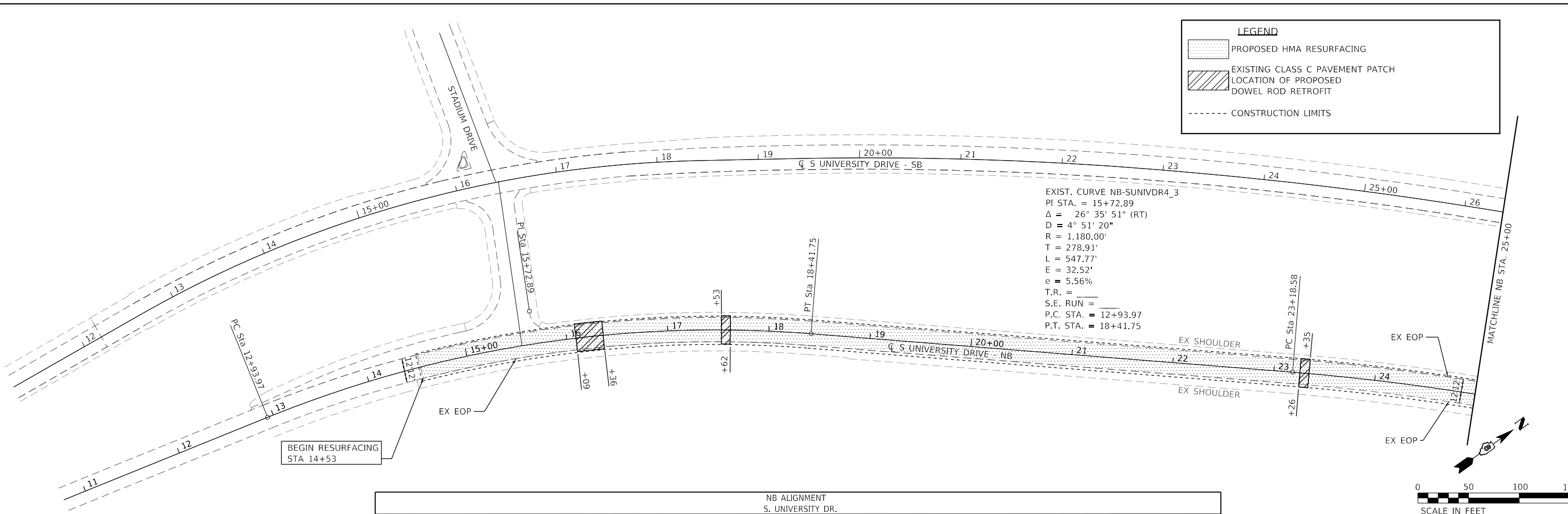
**LEGEND**

-  PROPOSED HMA RESURFACING
-  EXISTING CLASS C PAVEMENT PATCH
-  LOCATION OF PROPOSED DOWEL ROD RETROFIT
-  CONSTRUCTION LIMITS

EXIST. CURVE NB-SUNIVDR4\_3  
 PI STA. = 15+72.89  
 $\Delta = 26^\circ 35' 51''$  (RT)  
 $D = 4^\circ 51' 20''$   
 $R = 1,180.00'$   
 $T = 278.91'$   
 $L = 547.77'$   
 $E = 32.52'$   
 $e = 5.56\%$   
 $T.R. =$   
 $S.E. RUN =$   
 $P.C. STA. = 12+93.97$   
 $P.T. STA. = 18+41.75$

NB ALIGNMENT S. UNIVERSITY DR.							
DESCRIPTION	POT STA. 8+86.75	PC STA. 12+93.97	PI STA. 15+72.89	PT STA. 18+41.75	PC STA. 23+18.51	PI STA. 27+92.40	PT STA. 32+53.15
NORTHING	768,730.8827	769,127.0000	769,398.3070	769,611.9376	769,977.1645	770,340.0802	770,553.0456
EASTING	2,342,068.9539	2,342,163.4094	2,342,228.1034	2,342,407.4210	2,342,713.9856	2,343,018.6103	2,343,441.8711

EXIST. CURVE NB-SUNIVDR4\_6  
 PI STA. = 27+92.40  
 $\Delta = 23^\circ 16' 52''$  (RT)  
 $D = 2^\circ 29' 28''$   
 $R = 2,300.00'$   
 $T = 473.82'$   
 $L = 934.56'$   
 $E = 48.30'$   
 $e = 3.3\%$   
 $T.R. =$   
 $S.E. RUN =$   
 $P.C. STA. = 23+18.58$   
 $P.T. STA. = 32+53.15$



MODEL: Default  
 FILE NAME: I:\19063 - S. University Drive - Phase 1\CADD\Microstation\CADD Drawings\0819063.028-shc-plan.dgn  
 ILLINOIS DESIGN FIRM LICENSE NO.: 184.001115





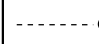
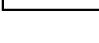
USER NAME = bill.tindall	DESIGNED -	REVISED -
PLOT SCALE = 100.0000' / in.	DRAWN -	REVISED -
PLOT DATE = 3/12/2024	CHECKED -	REVISED -
	DATE -	REVISED -

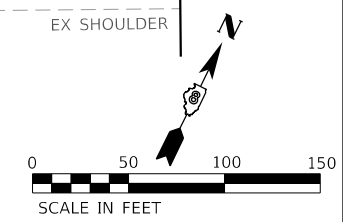
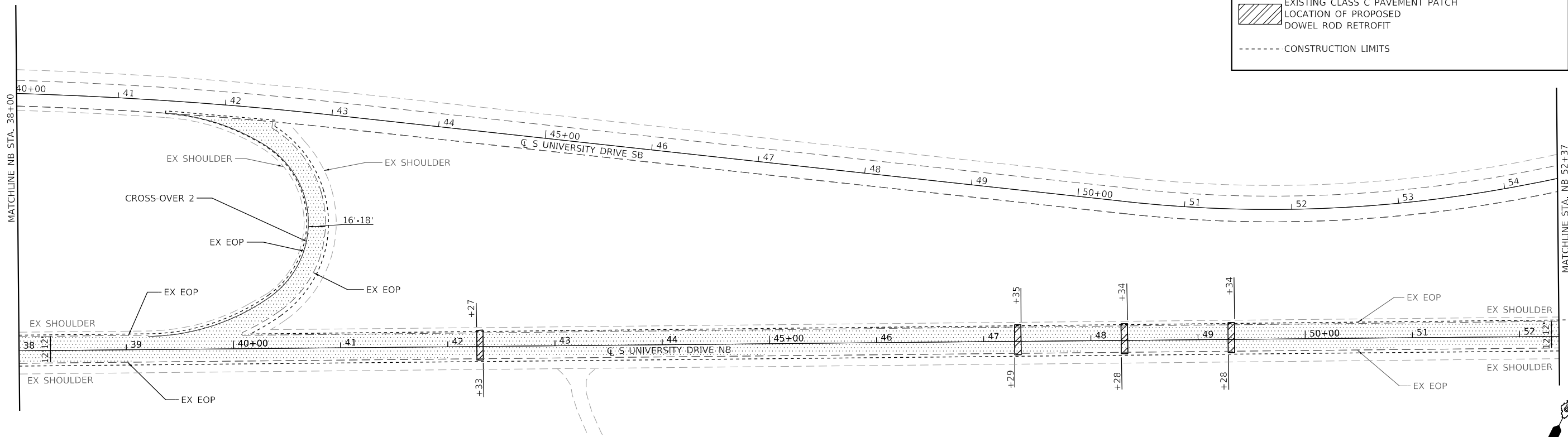
**SOUTHERN ILLINOIS UNIVERSITY  
EDWARDSVILLE**

<b>PLAN SHEETS</b>			
SCALE: 1"=50'	SHEET 1	OF 2 SHEETS	STA. 14+53 TO STA. 38+00

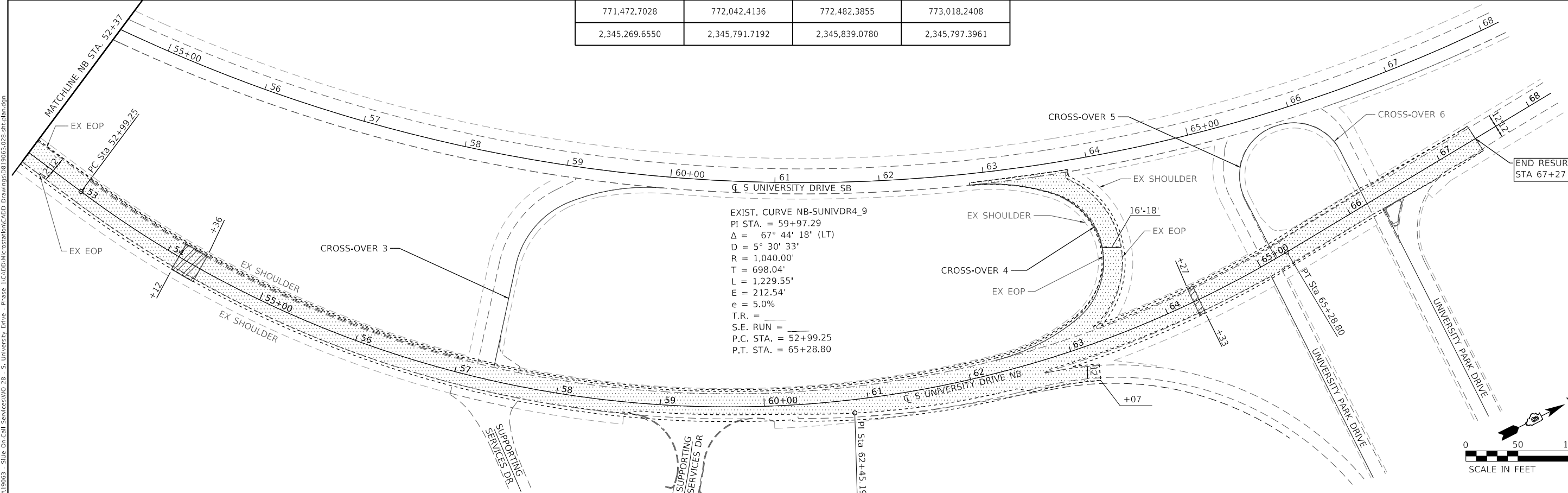
F.A.U. RTE. 8885	SECTION 21-00007-00-RS	COUNTY MADISON	TOTAL SHEETS 21	SHEET NO. 9
CONTRACT NO. 97835				
ILLINOIS FED. AID PROJECT				

**LEGEND**

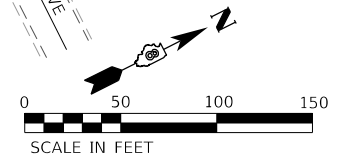
-  PROPOSED HMA RESURFACING
-  EXISTING CLASS C PAVEMENT PATCH
-  LOCATION OF PROPOSED DOWEL ROD RETROFIT
-  CONSTRUCTION LIMITS



NB ALIGNMENT S. UNIVERSITY DR.			
PC STA. 52+99.25	PI STA. 62+45.19	PT STA. 65+28.80	POT STA 70+66.28
771,472.7028	772,042.4136	772,482.3855	773,018.2408
2,345,269.6550	2,345,791.7192	2,345,839.0780	2,345,797.3961



EXIST. CURVE NB-SUNIVDR4\_9  
 PI STA. = 59+97.29  
 $\Delta = 67^\circ 44' 18''$  (LT)  
 $D = 5^\circ 30' 33''$   
 $R = 1,040.00'$   
 $T = 698.04'$   
 $L = 1,229.55'$   
 $E = 212.54'$   
 $e = 5.0\%$   
 T.R. = \_\_\_\_\_  
 S.E. RUN = \_\_\_\_\_  
 P.C. STA. = 52+99.25  
 P.T. STA. = 65+28.80



MODEL: Default  
 FILE NAME: I:\11063 - S. University Drive - Phase 1\CADD\Microstation\CADD Drawings\0819063.028-shc-plan.dgn  
 ILLINOIS DESIGN FIRM LICENSE NO.: 184.001115



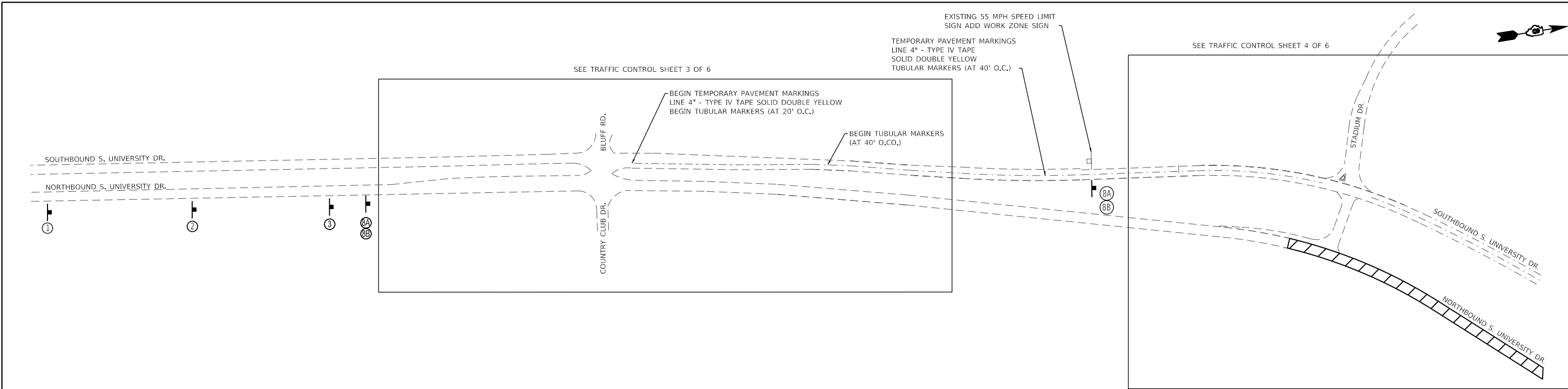
USER NAME = bill.tindall	DESIGNED -	REVISED -
PLOT SCALE = 100,0000' / in.	DRAWN -	REVISED -
PLOT DATE = 3/12/2024	CHECKED -	REVISED -
	DATE -	REVISED -

**SOUTHERN ILLINOIS UNIVERSITY  
EDWARDSVILLE**

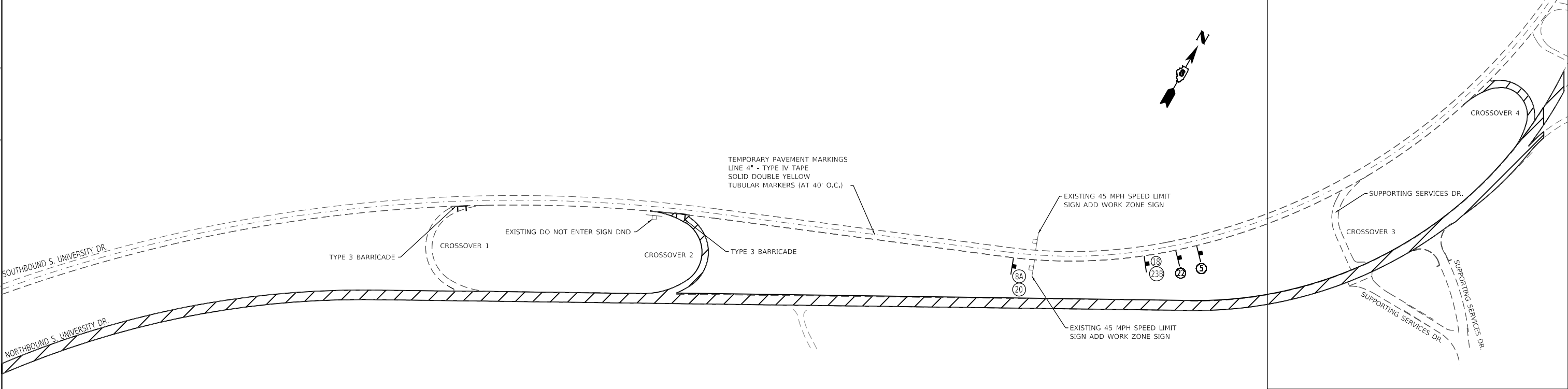
**PLAN SHEETS**

SCALE: 1"=50' SHEET 2 OF 2 SHEETS STA. 38+00 TO STA. 67+27

F.A.U. RTE. 8885	SECTION 21-00007-00-RS	COUNTY MADISON	TOTAL SHEETS 21	SHEET NO. 10
			CONTRACT NO. 97835	
		ILLINOIS FED. AID PROJECT		



**TRAFFIC CONTROL PLAN LEGEND**



MODEL SHEET 1  
 FILE NAME: I:\110063 - S. University Drive - Phase 1\CADD\Microstation\CADD Drawings\0819063.02b-shctc.dgn  
 MODEL SHEET 1  
 FILE NAME: I:\110063 - S. University Drive - Phase 1\CADD\Microstation\CADD Drawings\0819063.02b-shctc.dgn



USER NAME = bill.tindall	DESIGNED -	REVISED -
PLOT SCALE = 250.0000' / in.	DRAWN -	REVISED -
PLOT DATE = 3/12/2024	CHECKED -	REVISED -
	DATE -	REVISED -

**SOUTHERN ILLINOIS UNIVERSITY  
EDWARDSVILLE**

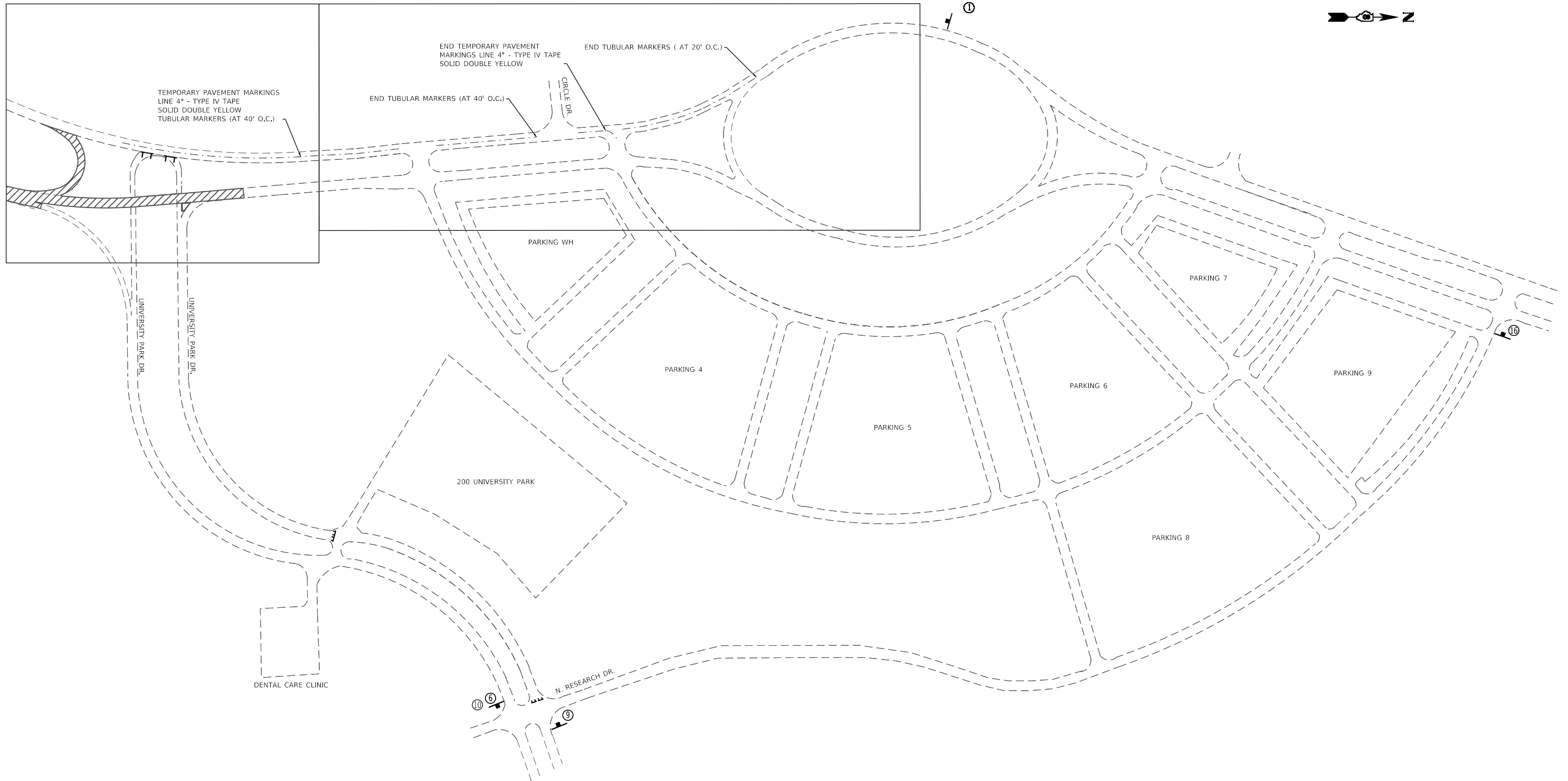
**TRAFFIC CONTROL SHEETS**

SCALE = NTS SHEET 1 OF 6 SHEETS STA. TO STA.

F.A.U. RTE. 8885	SECTION 21-00007-00-R5	COUNTY MADISON	TOTAL SHEETS 21	SHEET NO. 11
CONTRACT NO. 97835				
ILLINOIS FED. AID PROJECT				

SEE TRAFFIC CONTROL SHEET 5 OF 6

SEE TRAFFIC CONTROL SHEET 6 OF 6



**TRAFFIC CONTROL PLAN LEGEND**

① W20-1103(0) 48x48	② W9-2L 48x48	③ R3-7R 30x30	④ W1-4L 48x48	⑤ R4-7a 48x36	⑥ M5-1L 30x21	⑦ M5-1R 30x21	⑧ W2-1115(0) 36x18	⑧ R2-1 36x48	⑨ M4-9R 30x24	⑩ M4-9L 30x24	⑪ SPECIAL 48x12	⑫ G20-1103(0) 60x36	⑬ R2-1 36x48	⑭ R3-2 24x24	⑮ R3-7L 30x30	⑯ M4-8a 24x18	⑰ W9-2L 48x48	⑱ W6-3 48x48	⑲ W20-2A 48x48	⑳ R2-1 36x48	㉑ G20-2 36x18	㉒ R4-1 48x60	㉓ W7-3aP 36x30	㉔ W7-3aP 36x30						

MODEL SHEET 3  
 FILE NAME: I:\1119063 - Site On-Call Services\WO 38 - S. University Drive - Phase 1\CADD\Microstation\CADD Drawings\0819063.02b-shctc.dgn

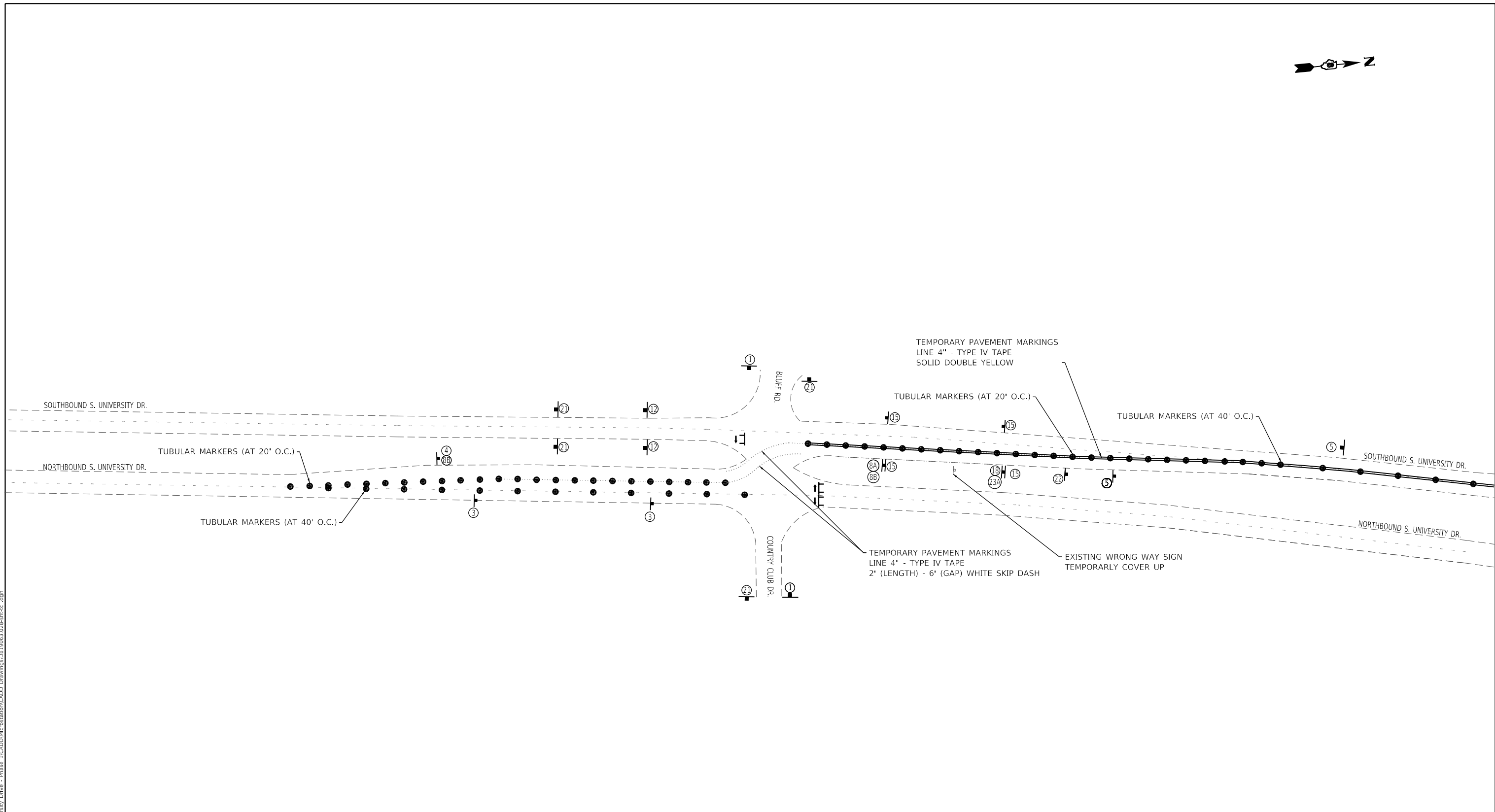
**OATES ASSOCIATES**  
 www.oatesassociates.com  
 ILLINOIS DESIGN FIRM LICENSE NO.: 184.001115

USER NAME = bill.tindall	DESIGNED -	REVISED -
	DRAWN -	REVISED -
PLOT SCALE = 250.0000' / in.	CHECKED -	REVISED -
PLOT DATE = 3/12/2024	DATE -	REVISED -

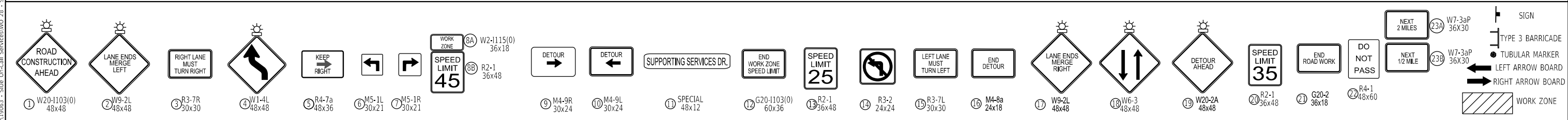
**SOUTHERN ILLINOIS UNIVERSITY  
EDWARDSVILLE**

TRAFFIC CONTROL SHEETS			
SCALE: NTS	SHEET 2	OF 6 SHEETS	STA. TO STA.

F.A.U. RTE.	SECTION	COUNTY	TOTAL SHEETS	SHEET NO.
8885	21-00007-00-R5	MADISON	21	12
			CONTRACT NO. 97835	
		ILLINOIS	FED. AID PROJECT	



**TRAFFIC CONTROL PLAN LEGEND**



MODEL SHEET 3  
 FILE NAME: I:\1119063 - SUE On-Call Services\WO 38 - S. University Drive - Phase 1\CADD\Microstation\CAAD Drawings\0819063.02b-shctc.dgn

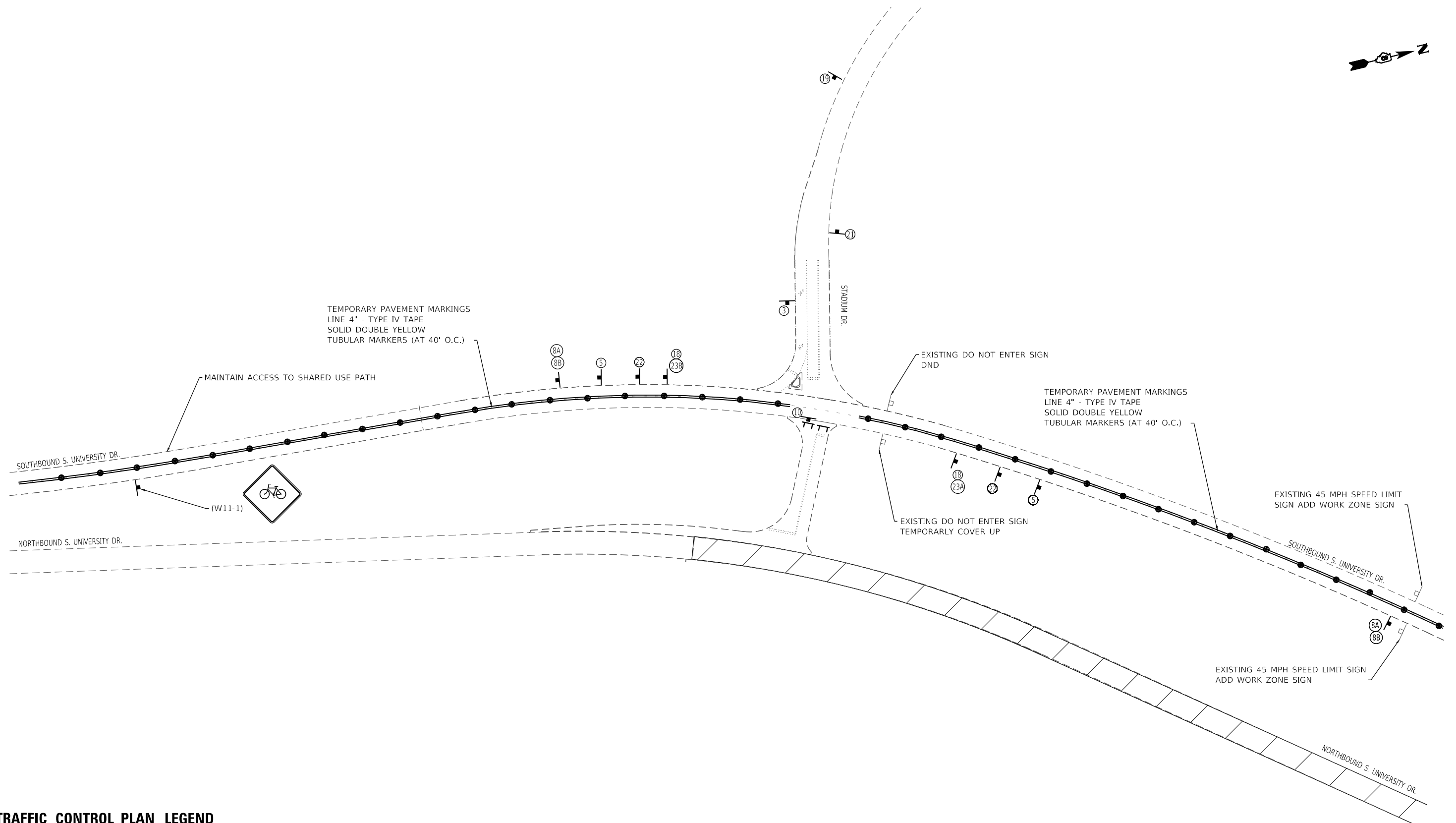


USER NAME = bill.tindall	DESIGNED -	REVISED -
PLOT SCALE = 100.0000' / in.	DRAWN -	REVISED -
PLOT DATE = 3/12/2024	CHECKED -	REVISED -
	DATE -	REVISED -

**SOUTHERN ILLINOIS UNIVERSITY  
 EDWARDSVILLE**

**TRAFFIC CONTROL SHEETS**  
 SCALE: NTS    SHEET 3 OF 6 SHEETS    STA.    TO STA.

F.A.U. RTE.	SECTION	COUNTY	TOTAL SHEETS	SHEET NO.
8885	21-00007-00-R5	MADISON	21	13
CONTRACT NO. 97835				
ILLINOIS		FED. AID PROJECT		



MODEL SHEET 4  
 FILE NAME: I:\1119037 - Site Or-Call Services\WO 38 - S. University Drive - Phase 1\CADD\Microstation\CAOD Drawings\08190631028-shctc.dgn

**TRAFFIC CONTROL PLAN LEGEND**

① W20-1103(0) 48x48	② W9-2L 48x48	③ R3-7R 30x30	④ W1-4L 48x48	⑤ R4-7a 48x36	⑥ M5-1L 30x21	⑦ M5-1R 30x21	⑧A W2-1115(0) 36x18	⑧B R2-1 36x48	⑨ M4-9R 30x24	⑩ M4-9L 30x24	⑪ SPECIAL 48x12	⑫ G20-1103(0) 60x36	⑬ R2-1 36x48	⑭ R3-2 24x24	⑮ R3-7L 30x30	⑯ M4-8a 24x18	⑰ W9-2L 48x48	⑱ W6-3 48x48	⑲ W20-2A 48x48	⑳ R2-1 36x48	㉑ G20-2 36x18	㉒ R4-1 48x60	㉓ W7-3aP 36x30	㉔ W7-3aP 36x30	SIGN	TYPE 3 BARRICADE	TUBULAR MARKER	LEFT ARROW BOARD	RIGHT ARROW BOARD	WORK ZONE

**OATES ASSOCIATES**  
 www.oatesassociates.com  
 ILLINOIS DESIGN FIRM LICENSE NO.: 184.001115

USER NAME = bill.tindall	DESIGNED -	REVISED -
DRAWN -	REVISOR -	REVISED -
PLOT SCALE = 100,0000' / in.	CHECKED -	REVISED -
DATE = 3/12/2024	DATE -	REVISED -

**SOUTHERN ILLINOIS UNIVERSITY  
EDWARDSVILLE**

**TRAFFIC CONTROL SHEETS**  
 SCALE: NTS    SHEET 4 OF 6 SHEETS    STA.    TO STA.

F.A.U. RTE. 8885	SECTION 21-00007-00-R5	COUNTY MADISON	TOTAL SHEETS 21	SHEET NO. 14
ILLINOIS FED. AID PROJECT			CONTRACT NO. 97835	

TEMPORARY PAVEMENT MARKINGS  
LINE 4" - TYPE IV TAPE  
SOLID DOUBLE YELLOW  
TUBULAR MARKERS (AT 40' O.C.)

TEMPORARY PAVEMENT MARKINGS  
LINE 4" - TYPE IV TAPE  
SOLID DOUBLE YELLOW  
TUBULAR MARKERS (AT 40' O.C.)

EXISTING 45 MPH SPEED LIMIT SIGN  
ADD WORK ZONE SIGN

BARRICADE TO  
INCLUDE U-TURN  
ONLY SIGN

EXISTING 45 MPH SPEED LIMIT SIGN  
ADD WORK ZONE SIGN

EXISTING STOP SIGN

EXISTING DO NOT ENTER SIGN DND

CROSSOVER 4

EXISTING STOP SIGN

CROSSOVER 3

ADJACENT  
BUILDING  
CONSTRUCTION  
PROJECT  
SEE NOTE 3

**NOTES:**

1. MAINTAIN ACCESS TO CROSSOVER 3 AND SUPPORTING SERVICES DR. FOR FACILITIES MANAGEMENT.
2. CONTRACTOR TO MAINTAIN ONE NORTH BOUND LANE ON S UNIVERSITY DRIVE FOR SIUE FACILITIES TRAFFIC EXITING SUPPORTING SERVICES DRIVE TO NORTH END OF PROJECT LIMITS.
3. RESURFACING OPERATIONS AT UNIVERSITY PARK DRIVE TO BE COORDINATED WITH ADJACENT BUILDING CONTRACTOR TO MAINTAIN ACCESS. EXITING CONSTRUCTION TRAFFIC FROM ADJACENT BUILDING PROJECT AT 200 UNIVERSITY PARK DRIVE REQUIRES ACCESS TO NORTH BOUND S UNIVERSITY DR FOR U-TURN AND RIGHT TURN MANEUVERS. BUILDING CONTRACTOR IS CLAYCO 314-429-5100

**TRAFFIC CONTROL PLAN LEGEND**

① W20-1103(0) 48x48	② W9-2L 48x48	③ R3-7R 30x30	④ W1-4L 48x48	⑤ R4-7a 48x36	⑥ M5-1L 30x21	⑦ M5-1R 30x21	⑧ M4-9R 30x24	⑩ M4-9L 30x24	⑪ SPECIAL 48x12	⑫ G20-1103(0) 60x36	⑬ R2-1 36x48	⑭ R3-2 24x24	⑮ R3-7L 30x30	⑯ M4-8a 24x18	⑰ W9-2L 48x48	⑱ W6-3 48x48	⑲ W20-2A 48x48	⑳ R2-1 36x48	㉑ G20-2 36x18	㉒ R4-1 48x60	㉓ W7-3aP 36x30	㉔ W7-3aP 36x30	SIGN	TYPE 3 BARRICADE	TUBULAR MARKER	LEFT ARROW BOARD	RIGHT ARROW BOARD	WORK ZONE

MODEL SHEET 5  
FILE NAME: I:\181319063 - Siue On-Call Services\WO 38 - S. University Drive - Phase 1\CADD\Microstation\CADD Drawings\0819063.028-shctc.dgn



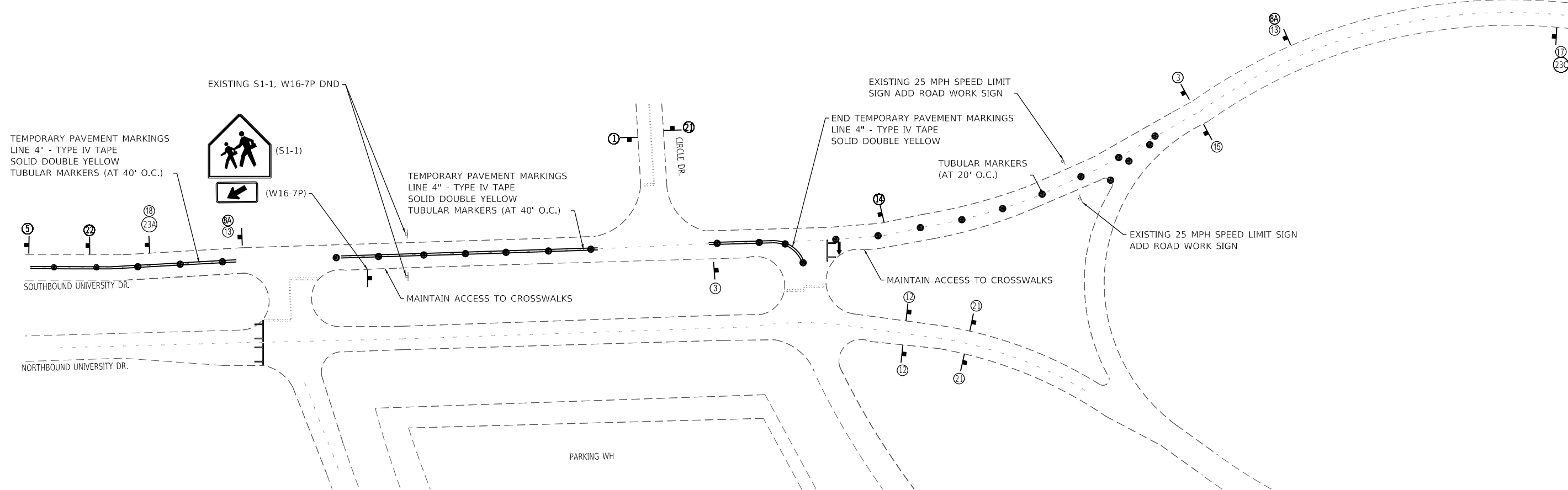
USER NAME = bill.tindall	DESIGNED -	REVISED -
	DRAWN -	REVISED -
PLOT SCALE = 100.0000' / in.	CHECKED -	REVISED -
PLOT DATE = 3/12/2024	DATE -	REVISED -

**SOUTHERN ILLINOIS UNIVERSITY  
EDWARDSVILLE**

**TRAFFIC CONTROL SHEETS**

SCALE: NTS SHEET 5 OF 6 SHEETS STA. TO STA.

F.A.U. RTE.	SECTION	COUNTY	TOTAL SHEETS	SHEET NO.
8885	21-00007-00-R5	MADISON	21	15
CONTRACT NO. 97835			ILLINOIS FED. AID PROJECT	



**TRAFFIC CONTROL PLAN LEGEND**

① W20-1103(0) 48x48	② W9-2L 48x48	③ R3-7R 30x30	④ W1-4L 48x48	⑤ R4-7a 48x36	⑥ M5-1L 30x21	⑦ M5-1R 30x21	⑧A W2-1115(0) 36x18	⑧B R2-1 36x48	⑨ M4-9R 30x24	⑩ M4-9L 30x24	⑪ SPECIAL 48x12	⑫ G20-1103(0) 60x36	⑬ R2-1 36x48	⑭ R3-2 24x24	⑮ R3-7L 30x30	⑯ M4-8a 24x18	⑰ W9-2L 48x48	⑱ W6-3 48x48	⑲ W20-2A 48x48	⑳ R2-1 36x48	㉑ G20-2 36x18	㉒ R4-1 48x60	㉓A W7-3aP 36x30	㉓B W7-3aP 36x30	TYPE 3 BARRICADE

MODEL SHEET 6  
 FILE NAME: I:\1119037 - Site On-Call Services\WO 38 - University Drive - Phase 1\CADD\Microstation\CADD Drawings\08190631028-shctc.dgn



USER NAME = bill.tindall	DESIGNED -	REVISED -
PLOT SCALE = 100,0000' / in.	DRAWN -	REVISED -
PLOT DATE = 3/12/2024	CHECKED -	REVISED -
	DATE -	REVISED -

**SOUTHERN ILLINOIS UNIVERSITY  
EDWARDSVILLE**

**TRAFFIC CONTROL SHEETS**

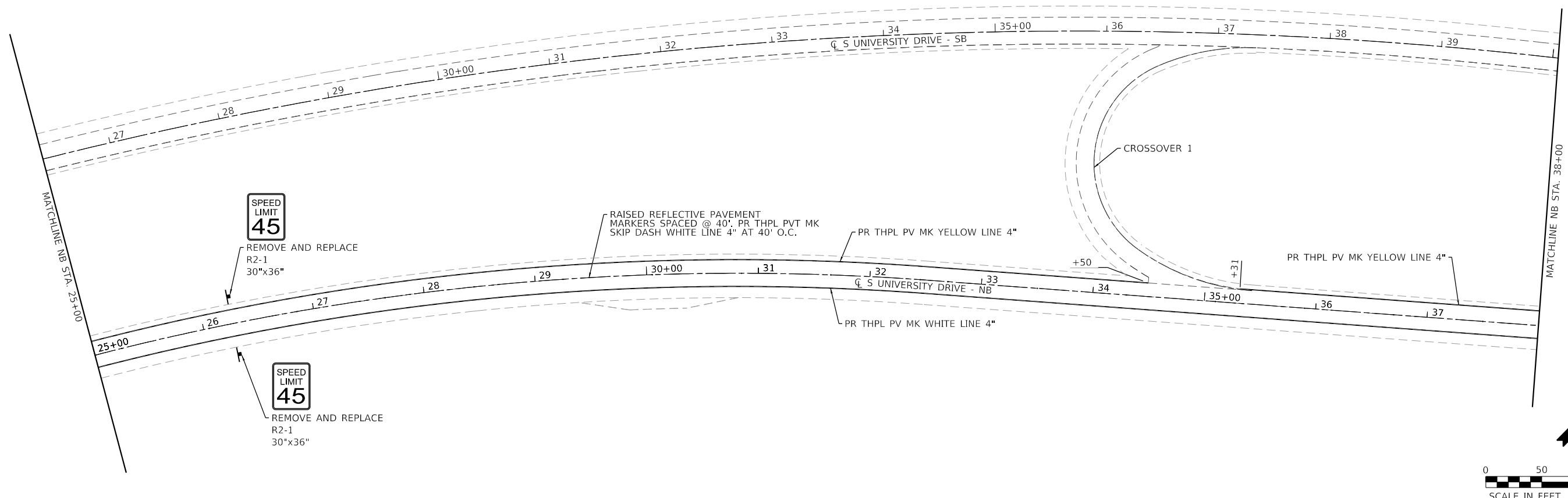
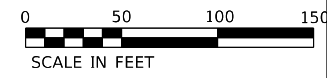
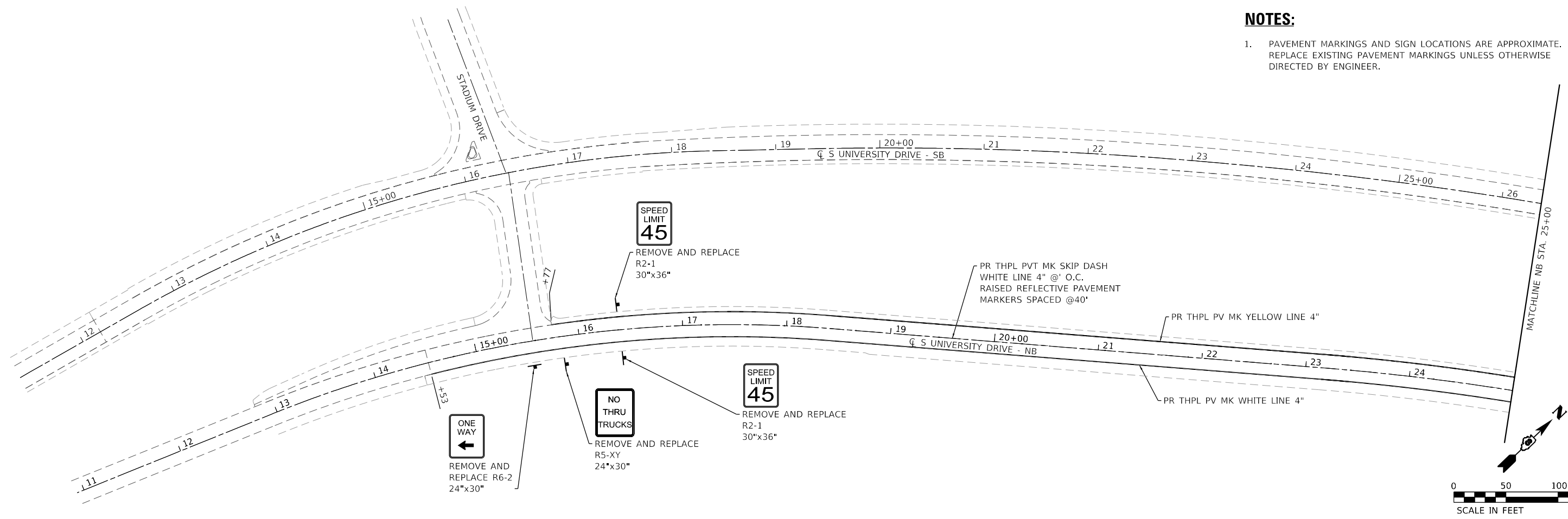
SCALE: NTS SHEET 6 OF 6 SHEETS STA. TO STA.

F.A. RTE.	SECTION	COUNTY	TOTAL SHEETS	SHEET NO.
8885	21-00007-00-R5	MADISON	21	16
ILLINOIS FED. AID PROJECT			CONTRACT NO. 97835	



**NOTES:**

- PAVEMENT MARKINGS AND SIGN LOCATIONS ARE APPROXIMATE. REPLACE EXISTING PAVEMENT MARKINGS UNLESS OTHERWISE DIRECTED BY ENGINEER.



MODEL: Default  
 FILE NAME: I:\19063 - S University Drive - Phase 1\CADD\Microstation\CADD Drawings\0819063.028-shc-smk.dgn  
 ILLINOIS DESIGN FIRM LICENSE NO.: 184.001115



USER NAME = bill.tindall  
 PLOT SCALE = 100.0000' / in.  
 PLOT DATE = 3/12/2024

DESIGNED -	REVISED -
DRAWN -	REVISED -
CHECKED -	REVISED -
DATE -	REVISED -

**SOUTHERN ILLINOIS UNIVERSITY  
EDWARDSVILLE**

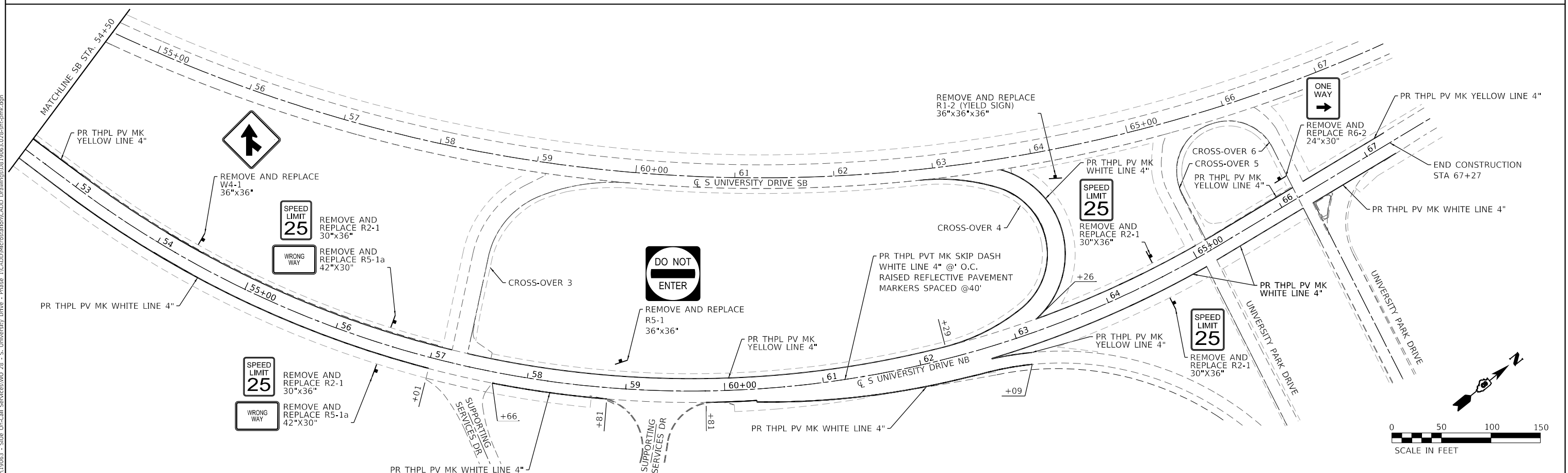
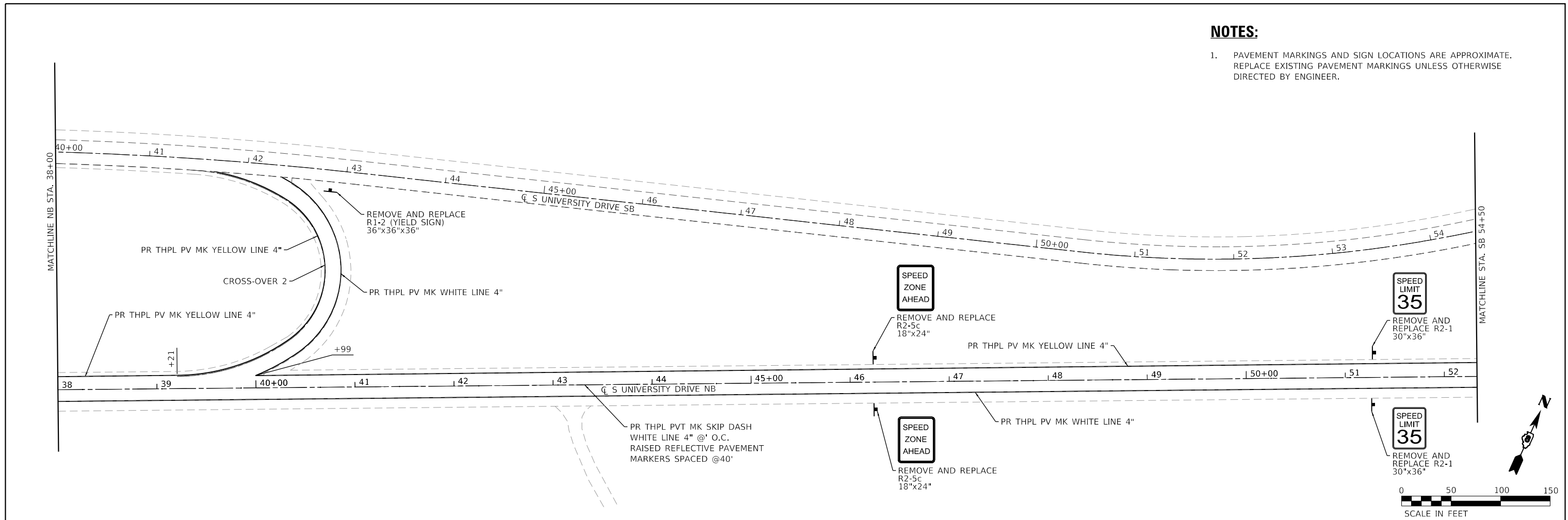
**PAVEMENT MARKING & SIGNAGE SHEETS**

SCALE: 1"=50' SHEET 1 OF 2 SHEETS STA. 14+53 TO STA. 38+00

F.A.U. RTE.	SECTION	COUNTY	TOTAL SHEETS	SHEET NO.
8885	21-00007-00-R5	MADISON	21	17
CONTRACT NO. 97835				
ILLINOIS FED. AID PROJECT				

**NOTES:**

- PAVEMENT MARKINGS AND SIGN LOCATIONS ARE APPROXIMATE. REPLACE EXISTING PAVEMENT MARKINGS UNLESS OTHERWISE DIRECTED BY ENGINEER.



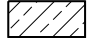

USER NAME = bill.tindall	DESIGNED -	REVISED -
PLOT SCALE = 100,0000' / in.	DRAWN -	REVISED -
DATE = 3/12/2024	CHECKED -	REVISED -
	DATE -	REVISED -

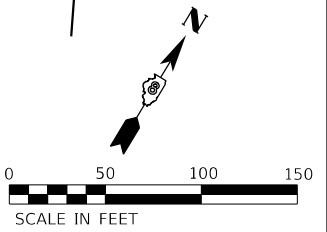
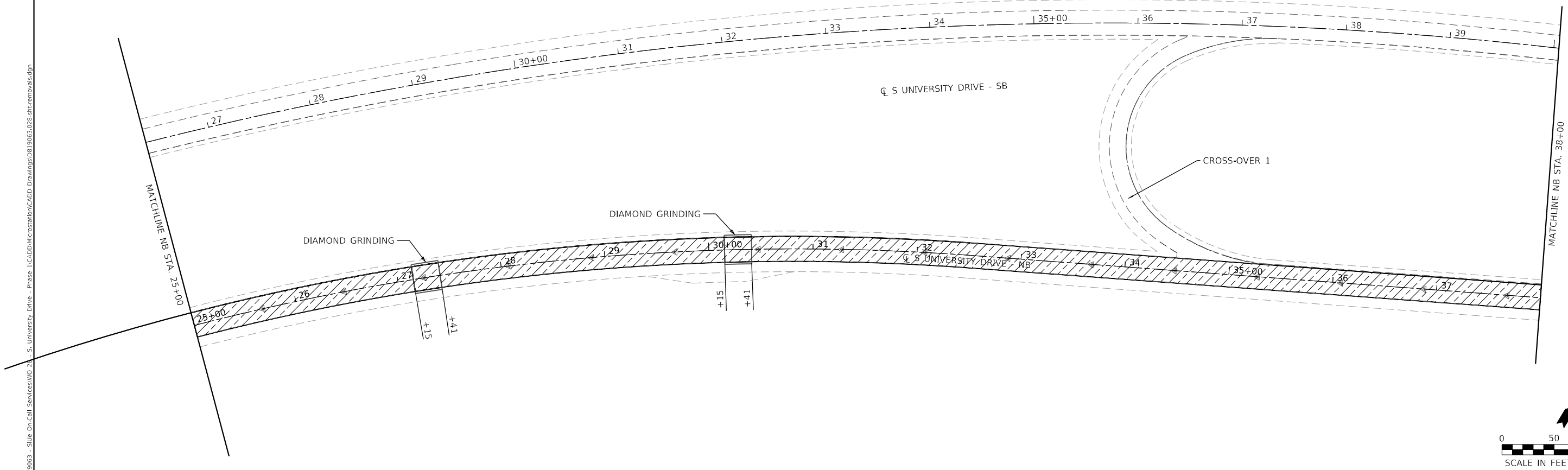
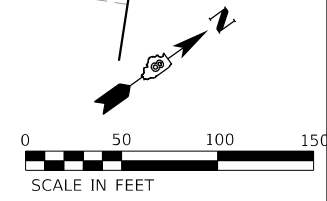
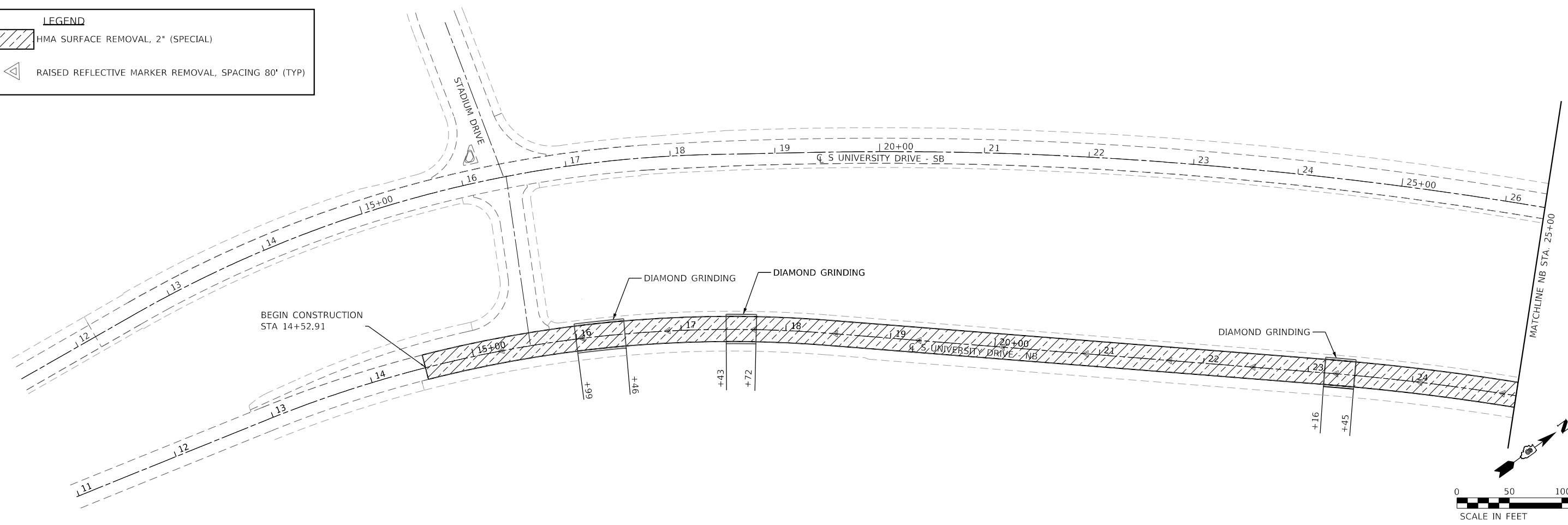
**SOUTHERN ILLINOIS UNIVERSITY EDWARDSVILLE**

<b>PAVEMENT MARKING &amp; SIGNAGE SHEETS</b>			
SCALE: 1"=50'	SHEET 2 OF 2 SHEETS	STA. 38+00 TO STA. 67+27	

F.A.U. RTE. 8885	SECTION 21-00007-00-R5	COUNTY MADISON	TOTAL SHEETS 21	SHEET NO. 18
				CONTRACT NO. 97835
ILLINOIS FED. AID PROJECT				

**LEGEND**

-  HMA SURFACE REMOVAL, 2" (SPECIAL)
-  RAISED REFLECTIVE MARKER REMOVAL, SPACING 80' (TYP)



MODEL: Default  
 FILE NAME: I:\19063 - S. University Drive - Phase 1\CADD\Microstation\CADD Drawings\0819063.028-shc-remove.rld.dgn  
 ILLINOIS DESIGN FIRM LICENSE NO.: 184.001115



USER NAME	= bill.tindall
PLOT SCALE	= 100.0000' / in.
PLOT DATE	= 3/12/2024



DESIGNED -	REVISED -
DRAWN -	REVISED -
CHECKED -	REVISED -
DATE -	REVISED -

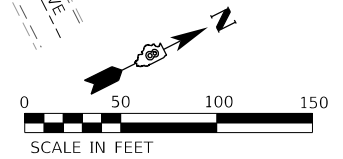
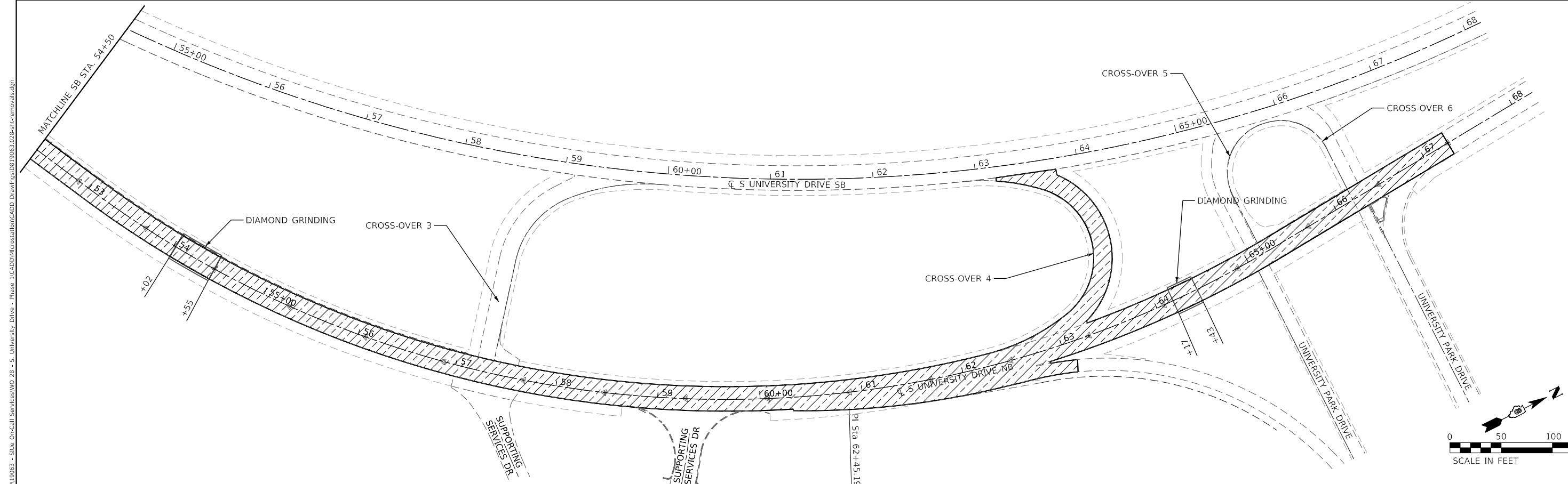
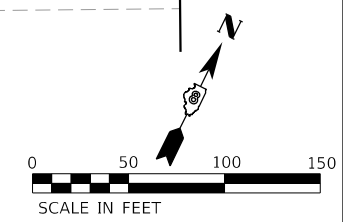
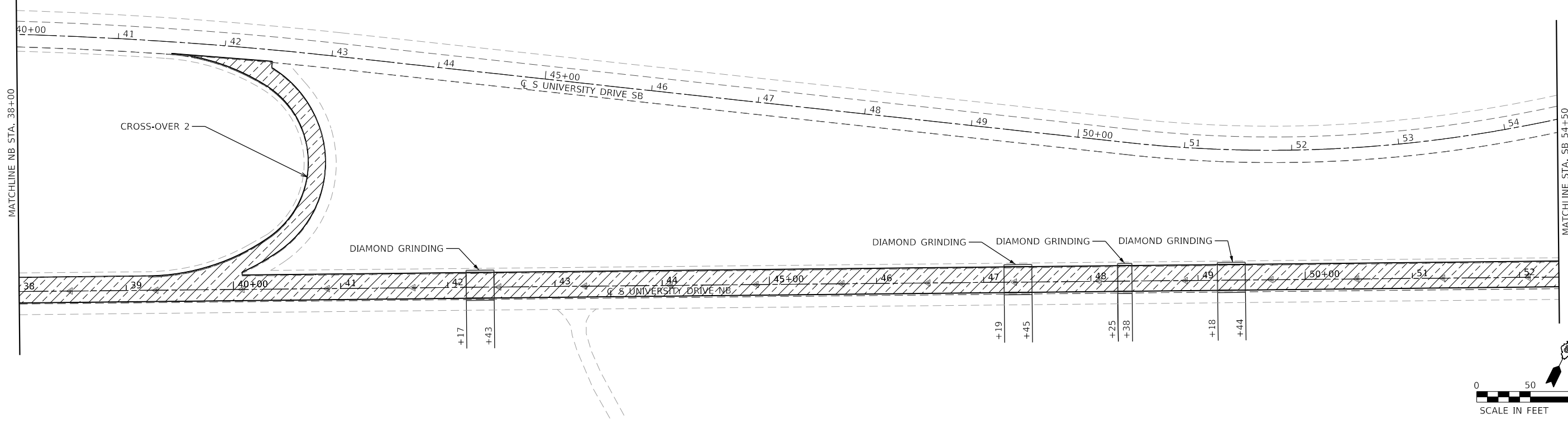
**SOUTHERN ILLINOIS UNIVERSITY  
 EDWARDSVILLE**

<b>REMOVAL PLAN SHEET</b>			
SCALE: 1"=50'	SHEET 1	OF 2 SHEETS	STA. 14+53 TO STA. 38+00

F.A.U. RTE.	SECTION	COUNTY	TOTAL SHEETS	SHEET NO.
8885	21-00007-00-R5	MADISON	21	19
CONTRACT NO. 97835				
ILLINOIS FED. AID PROJECT				

**LEGEND**

-  HMA SURFACE REMOVAL, 2" (SPECIAL)
-  RAISED REFLECTIVE MARKER REMOVAL, SPACING 80' (TYP.)



MODEL: Default  
 FILE NAME: I:\19063 - SUE OR-CALL SERVICES\WO 38 - S. University Drive - Phase 1\CADD\Microstation\CADD Drawings\0819063.028-sbr-removal.dgn  
 ILLINOIS DESIGN FIRM LICENSE NO.: 184.001115



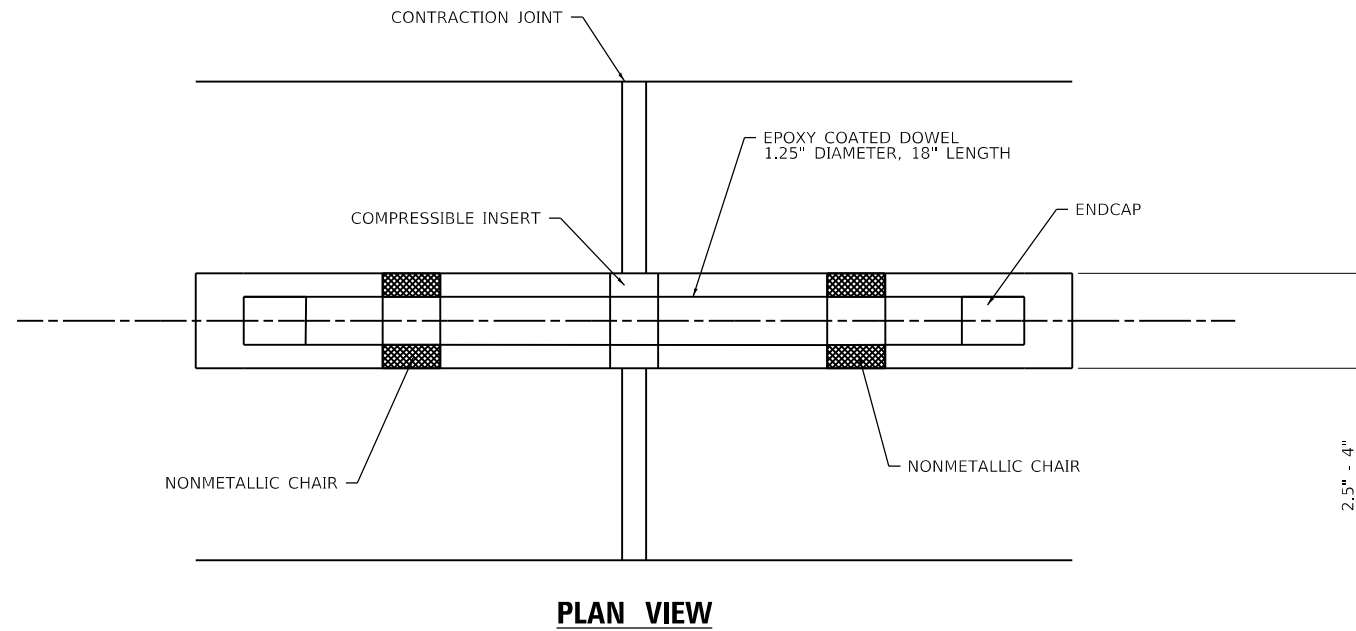
USER NAME = bill.tindall  
 PLOT SCALE = 100.0000' / in.  
 PLOT DATE = 3/12/2024

DESIGNED -	REVISD -
DRAWN -	REVISD -
CHECKED -	REVISD -
DATE -	REVISD -

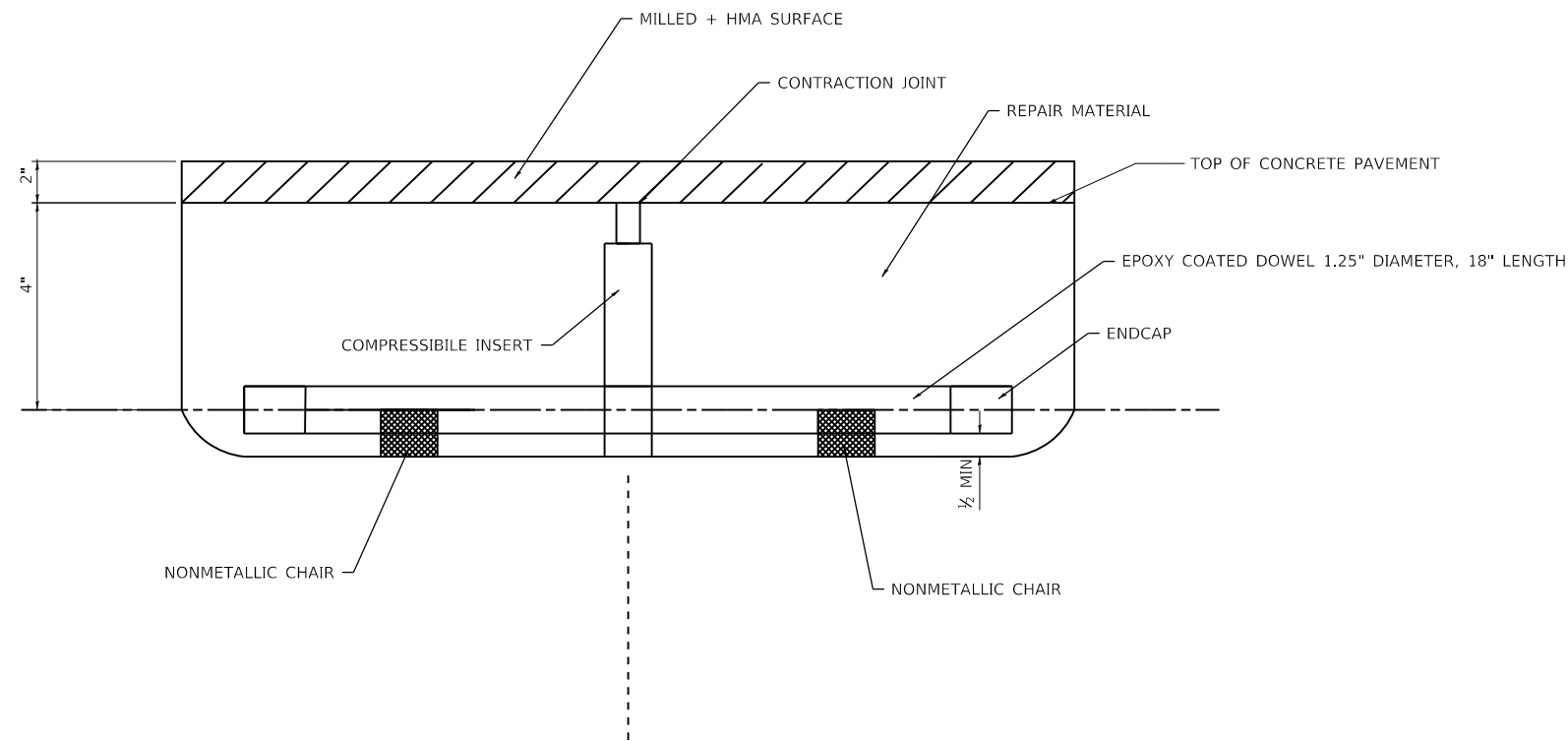
**SOUTHERN ILLINOIS UNIVERSITY  
 EDWARDSVILLE**

**REMOVAL PLAN SHEET**  
 SCALE: 1"=50'    SHEET 2 OF 2 SHEETS    STA. 38+00 TO STA. 67+27

F.A.U. RTE.	SECTION	COUNTY	TOTAL SHEETS	SHEET NO.
8885	21-00007-00-R5	MADISON	21	20
CONTRACT NO. 97835				
ILLINOIS		FED. AID PROJECT		



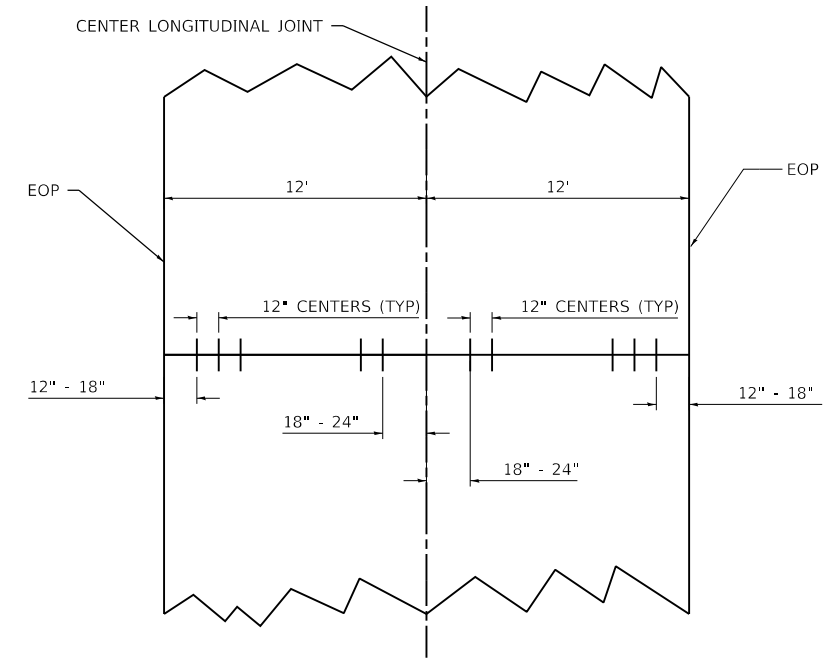
**PLAN VIEW**



**ELEVATION VIEW**

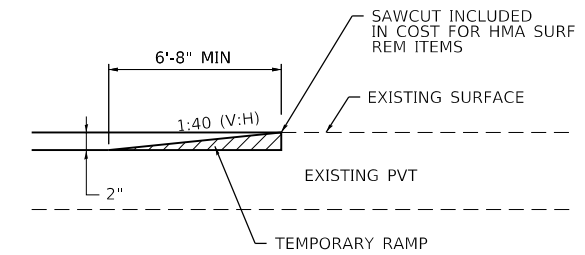
**DOWEL RETROFIT DETAIL**

(NOT TO SCALE)  
SEE PAVEMENT SCHEDULE FOR LOCATIONS



**TYPICAL DOWEL RETROFIT LAYOUT DETAIL**

(NOT TO SCALE)  
SEE PAVEMENT SCHEDULE FOR LOCATIONS



**TEMPORARY RAMP DETAIL**

(NOT TO SCALE)  
SEE PAVEMENT SCHEDULE FOR LOCATIONS

MODEL: Default  
 FILE NAME: I:\19063 - Site Or-Call Services\WO 38 - S. University Drive - Phase 1\CADD\Microstation\CADD Drawings\0819063.028-shc-detailed.dgn  
 ILLINOIS DESIGN FIRM LICENSE NO.: 184.001115



USER NAME = bill.tindall	DESIGNED -	REVISED -
PLOT SCALE = 40.0000 ' / in.	DRAWN -	REVISED -
PLOT DATE = 3/12/2024	CHECKED -	REVISED -
	DATE -	REVISED -

**SOUTHERN ILLINOIS UNIVERSITY  
EDWARDSVILLE**

**CONSTRUCTION DETAILS**

SCALE: NTS    SHEET 1 OF 1 SHEETS    STA.    TO STA.

F.A.U. RTE.	SECTION	COUNTY	TOTAL SHEETS	SHEET NO.
8885	21-00007-00-RS	MADISON	21	21
CONTRACT NO. 97835				
ILLINOIS FED. AID PROJECT				