

ROAD CLASSIFICATION: MAJOR COLLECTOR
 DESIGN SPEED: 50 M.P.H.

ADT: 06-14-2024 LETTING ITEM 174
 (2022) = 125
 (2042) = 170
 PC = 160
 SU = 8
 MU = 2
 DHV₂₀ = 17

SHEET NO.	TITLE
1	COVER SHEET
2	SUMMARY OF QUANTITIES
3	MISCELLANEOUS DETAILS AND TYPICAL SECTIONS
4	MISCELLANEOUS DETAILS
5-7	PLAN

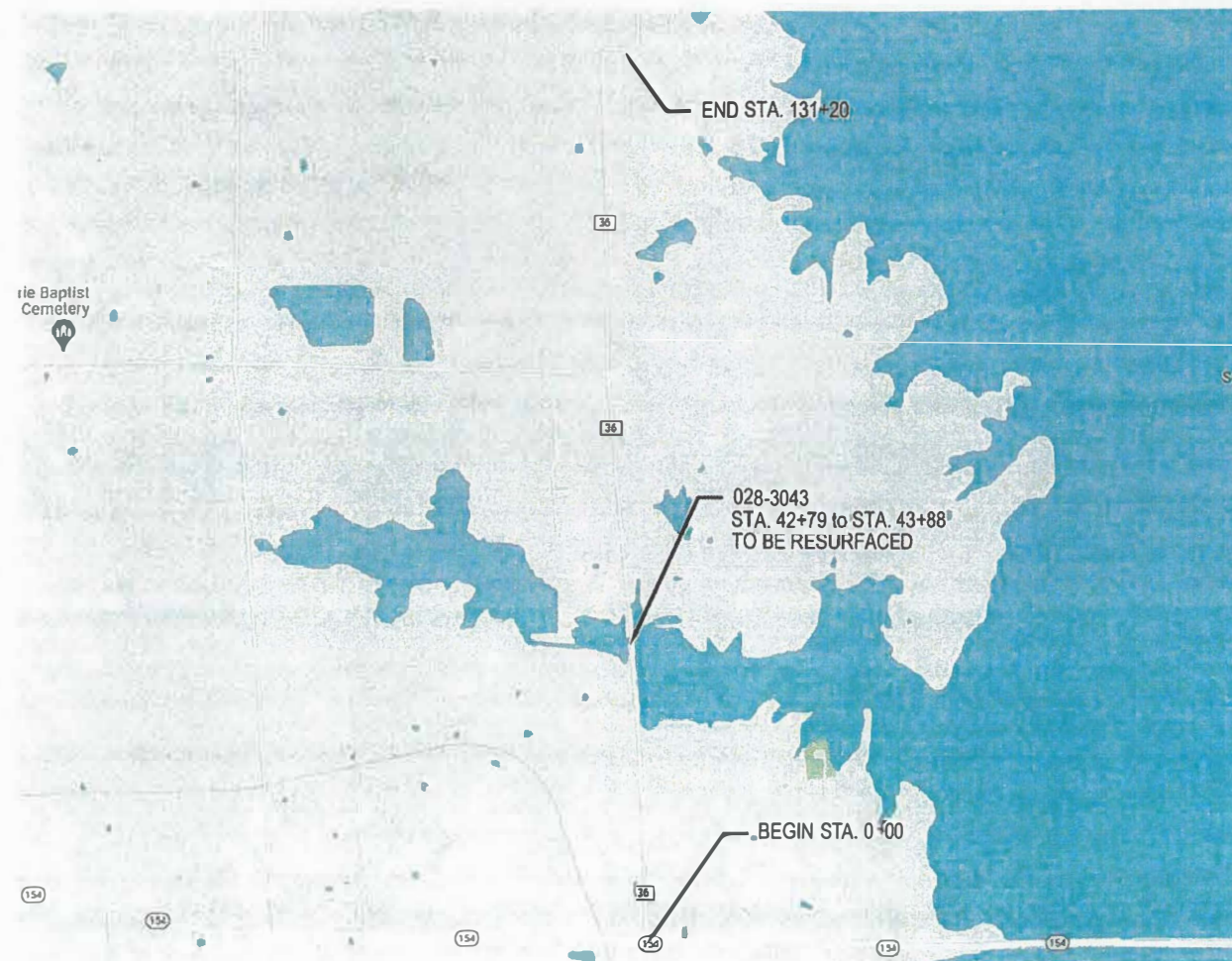
STANDARDS

- 701006-05
- 701301-04
- 701306-04
- 701311-03
- 701901-09
- 780001-05
- BLR 24-2

STATE OF ILLINOIS
 DEPARTMENT OF TRANSPORTATION

DIVISION OF HIGHWAYS
 PLANS FOR PROPOSED ROADWAY IMPROVEMENTS
 FAS 2871 21 Mine Road
 Franklin County, Illinois
 Section 22-00193-00-RS
 Project C21P(652)
 Job C-99-009-23

T-5-S R-2-E, 3rd PM



LOCATION MAP
 NET LENGTH = 2.48 miles (13120 Feet)
 GROSS LENGTH = 2.48 miles (13120 Feet)

ROUTE	SECTION	COUNTY	SHEET NO.
FAS 2871	22-00193-00-RS	FRANKLIN	1 OF 7

CONTRACT 99732



STATE OF ILLINOIS DEPARTMENT OF TRANSPORTATION	
APPROVED	<i>[Signature]</i> 1-18-24
FRANKLIN COUNTY HIGHWAY ENGINEER	
PASSED	<i>[Signature]</i> 3/13/24
DISTRICT 9 ENGINEER OF LOCAL ROADS & STREETS	
RELEASING FOR BID BASED ON LIMITED REVIEW	<i>[Signature]</i> 3/13/24
DEPUTY DIRECTOR OF HIGHWAYS, REGION 5 ENGINEER	

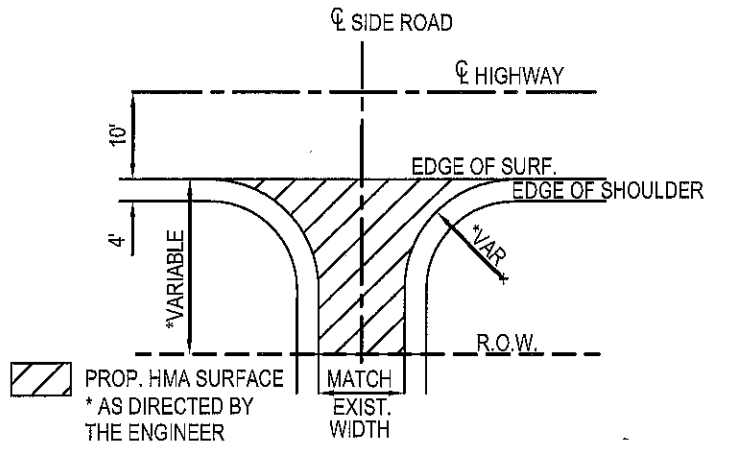


MATTHEW L. BARNETT
 ILLINOIS REGISTERED PROFESSIONAL ENGINEER
 #062-056597
 LIC. EXPIRES 11/30/2025

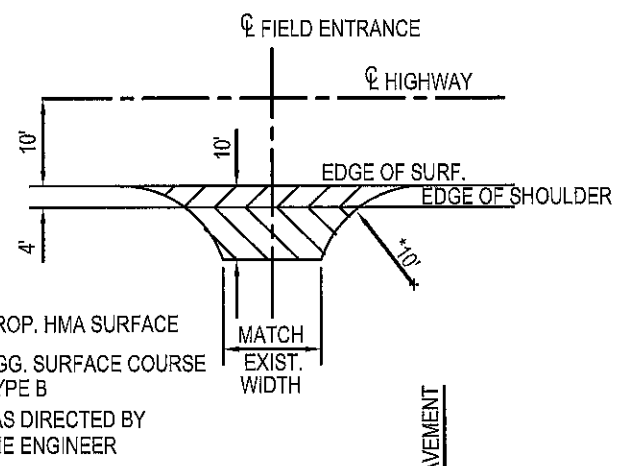
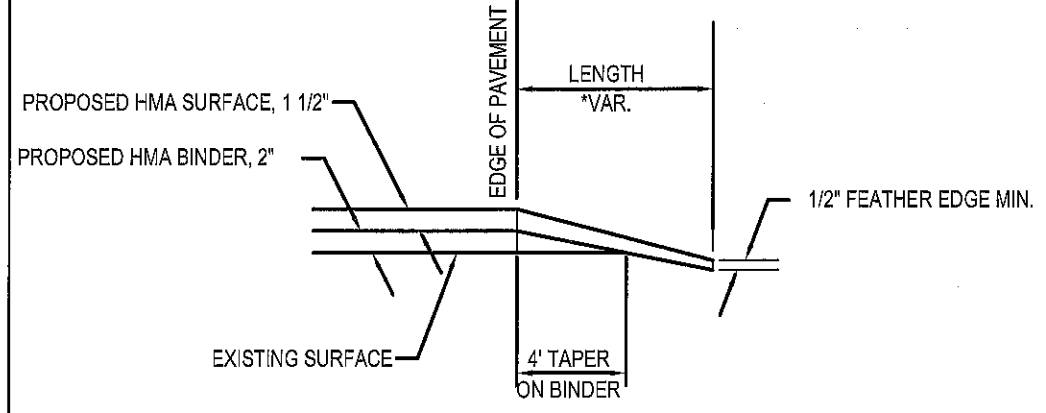
CONTRACT 99732

SUMMARY OF QUANTITIES			
CODE NO.	PAY ITEM	UNIT	TOTAL
40200800	AGGREGATE SURFACE COURSE, TYPE B	TON	14
40600290	BITUMINOUS MATERIALS (TACK COAT)	POUND	29,826
40600982	HOT-MIX ASPHALT SURFACE REMOVAL-BUTT JOINT	SQ YD	177
40603085	HOT-MIX ASPHALT BINDER COURSE, IL 19.0, N70	TON	3,762
40604052	HOT-MIX ASPHALT SURFACE COURSE, IL9.5, MIX "C", N70	TON	2,781
48100100	AGGREGATE SHOULDERS, TYPE A	TON	1,901
67100100	MOBILIZATION	L SUM	1
70100460	TRAFFIC CONTROL AND PROTECTION STANDARD 701306	L SUM	1
70300100	SHORT-TERM PAVEMENT MARKING	FOOT	2,618
70300150	SHORT-TERM PAVEMENT MARKING REMOVAL	SQ FT	437
* 78001110	PAINT PAVEMENT MARKING - LINE 4"	FOOT	38,832
X4401198	HOT MIX ASPHALT SURFACE REMOVAL-VARIABLE DEPTH	SQ YD	776

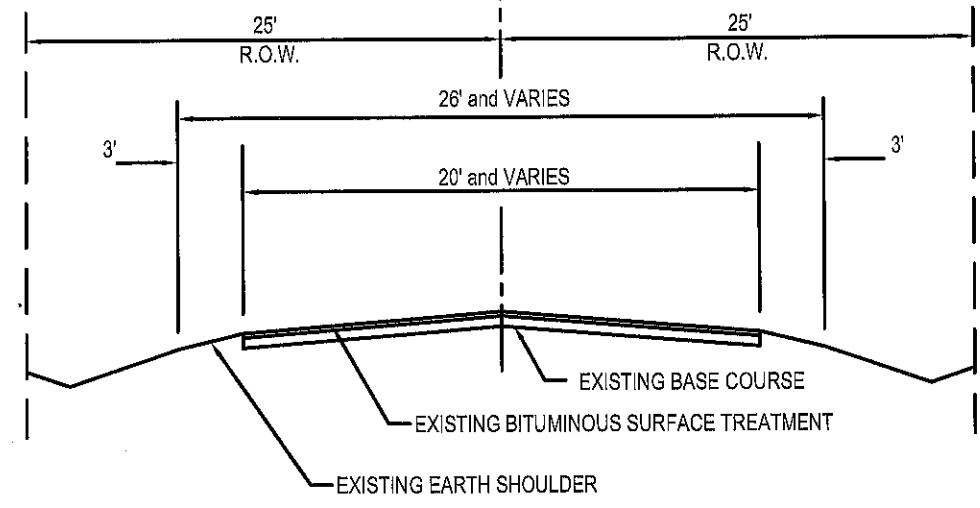
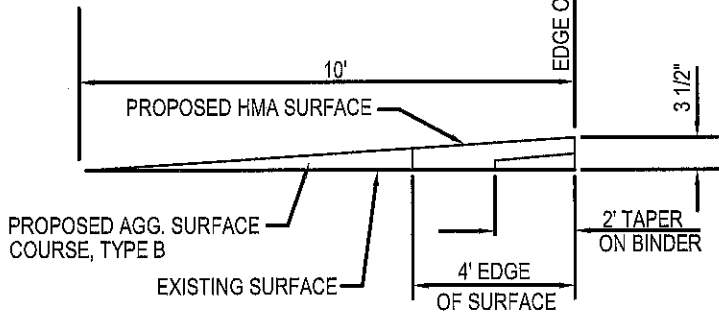
* SPECIALTY ITEMS



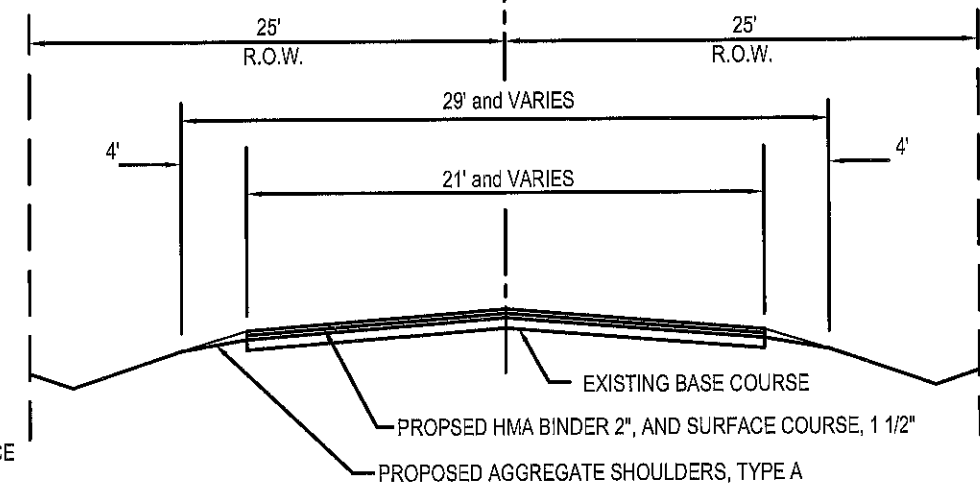
SIDEROAD DETAILS



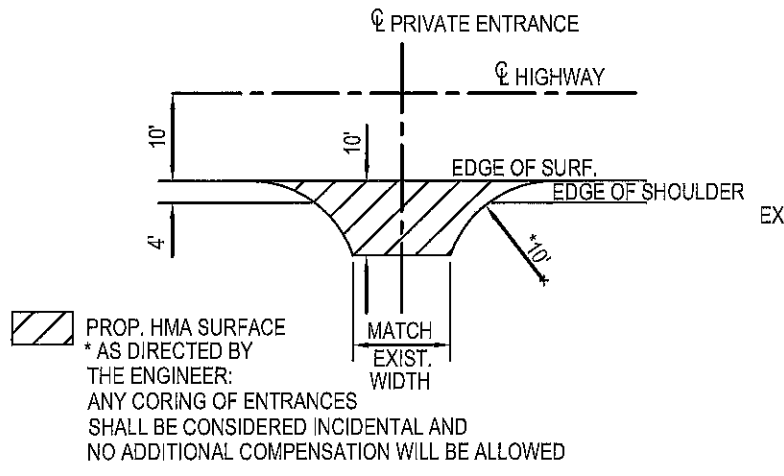
FIELD ENTRANCE DETAILS



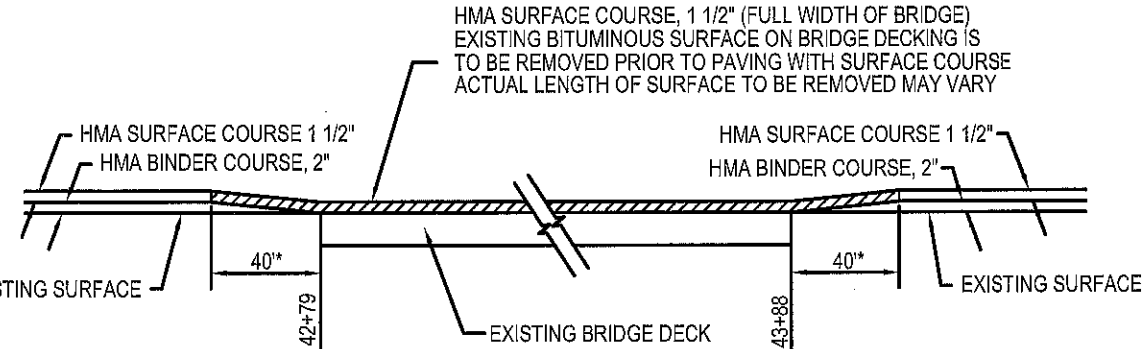
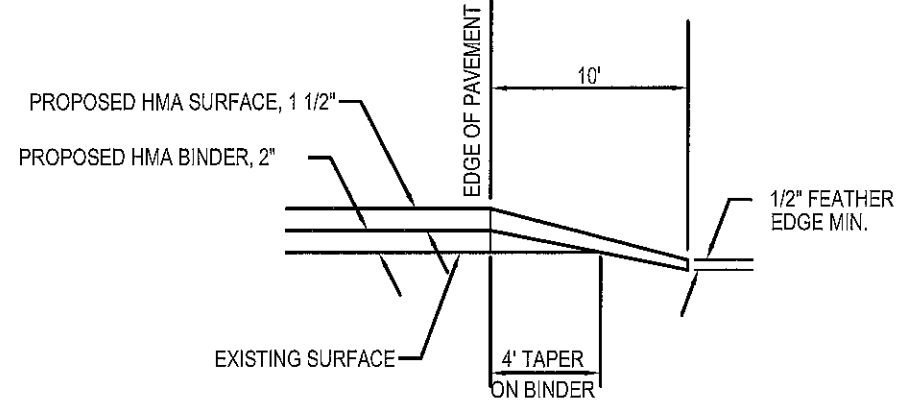
TYPICAL EXISTING SECTION



TYPICAL PROPOSED SECTION

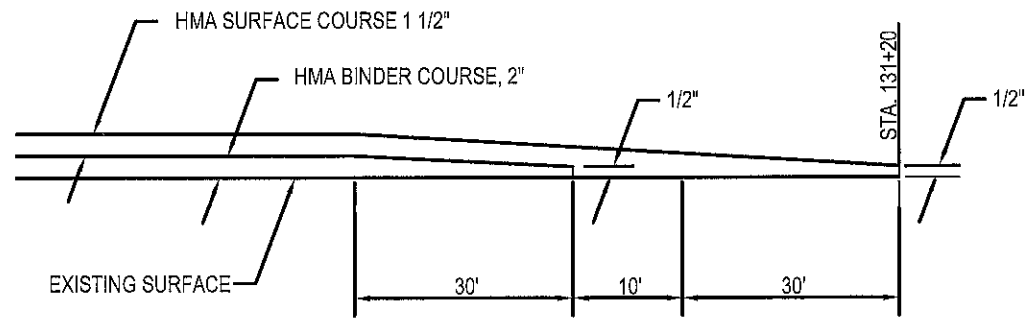


PRIVATE, COMMERCIAL ENTRANCE AND PARKING LOT DETAILS

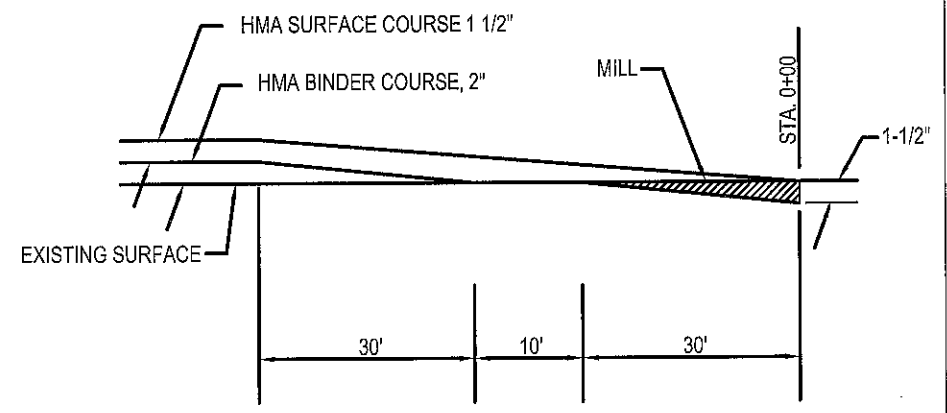


SURFACING AT BRIDGE

* TRANSITION TO FULL DEPTH = 40'
MILLING IS FROM STA. 41+59 TO STA. 45+08



FEATHER JOINT



BUTT JOINT

MISCELLANEOUS DETAILS & TYPICAL SECTIONS

FIELD ENTRANCE QUANTITIES		
ENTRANCES	AGGREGATE SURFACE COURSE TYPE B, TON	HOT MIX ASPHALT SURFACE COURSE, MIX "C", N70, TON
ONE (1) ENTRANCE	3.5	1
TOTAL = 4 ENTRANCES	14	4

MAILBOX TURNOUT QUANTITIES		
TURNOUT	BITUMINOUS MATERIALS (PRIME COAT) POUND	HOT MIX ASPHALT SURFACE COURSE, MIX "C", N70, TON
ONE (1) TURNOUT	33.3	1.1
TOTAL = 4 TURNOUTS	133.2	4.4

PRIVATE ENTRANCE QUANTITIES		
ENTRANCES	BITUMINOUS MATERIALS (PRIME COAT) POUND	HOT MIX ASPHALT SURFACE COURSE, MIX "C", N70, TON
ONE (1) ENTRANCE	78.3	2.7
TOTAL = 6 ENTRANCES	469.8	16.2

PARKING LOT QUANTITIES		
ENTRANCES	BITUMINOUS MATERIALS (PRIME COAT) POUND	HOT MIX ASPHALT SURFACE COURSE, MIX "C", N70, TON
ONE (1) ENTRANCE	158.3	5.4
TOTAL = 4 ENTRANCES	633.2	21.6

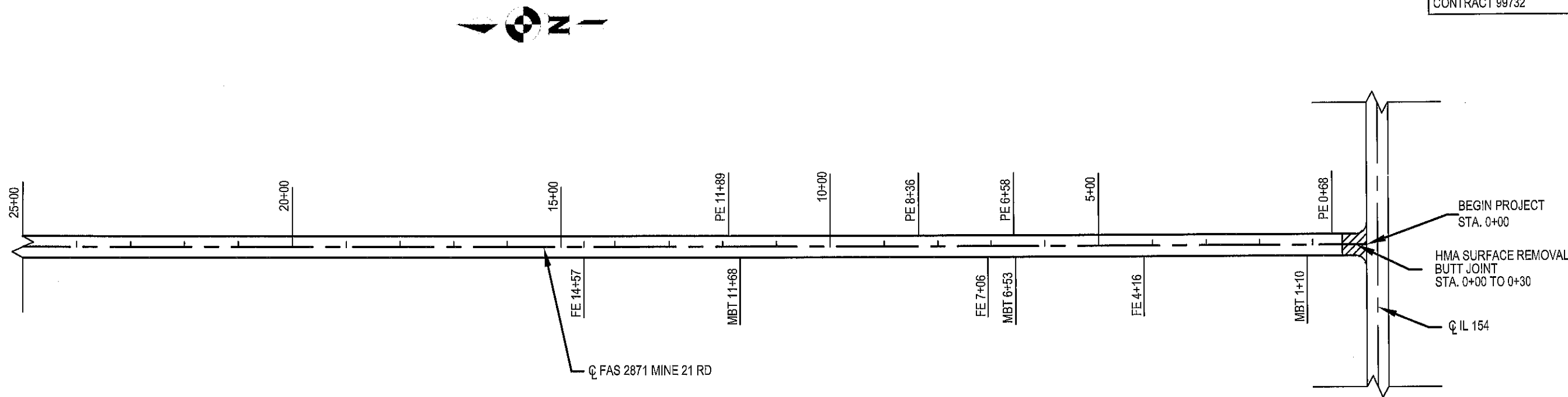
SIDEROAD QUANTITIES		
ENTRANCES	BITUMINOUS MATERIALS (PRIME COAT) POUND	HOT MIX ASPHALT SURFACE COURSE, MIX "C", N70, TON
54+12 RT	463.1	6.8
81+93 LT	463.1	24.3
TOTAL = 2 ENTRANCES	926.2	31.1

MILLING SCHEDULE		
STATION	TYPE	COLD MILLING (SQ YD)
0+00 to 0+30	BUTT JT	177
41+59 to 45+08	VARIABLE DEPTH	776
TOTAL (SQ YD)		953

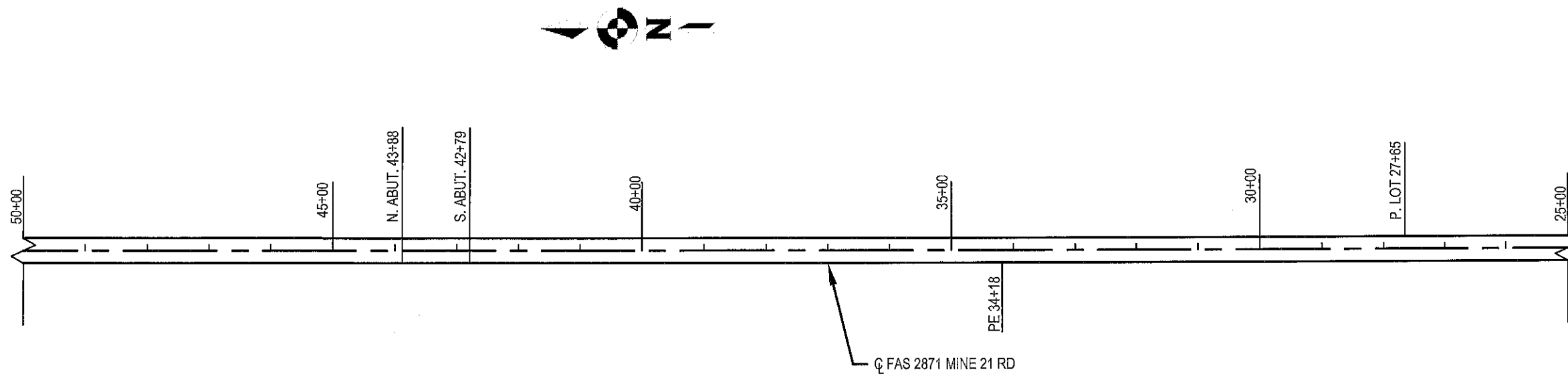
SCHEDULE OF PAVEMENT MARKING LINE, 4"							
NORTHBOUND LANE			SOUTHBOUND LANE			Edge of Pavement	
STATION	NO PASSING (YELLOW SOLID)	PASSING (YELLOW DASHED)	STATION	NO PASSING (YELLOW SOLID)	PASSING (YELLOW DASHED)	STATION	EDGE LINE (WHITE SOLID)
0+00 to 6+50	650		0+00 to 6+50	650		0+00 to 131+20	26092
6+50 to 16+00		238	6+50 to 16+00	950			
16+00 to 19+00		75					
19+00 to 21+50	250		19+00 to 21+50		63		
21+50 to 27+50		150					
27+50 to 30+00		63	27+50 to 30+00	250			
30+00 to 51+00		525					
51+00 to 57+00	600		51+00 to 57+00		150		
57+00 to 64+00	700		57+00 to 64+00	700			
64+00 to 72+25	824		64+00 to 72+25		206		
72+25 to 78+50		156					
78+50 to 83+50	500		78+50 to 83+50		125		
83+50 to 87+50		100					
87+50 to 92+75		131	87+50 to 92+75	525			
92+75 to 99+75		175					
99+75 to 106+50	675		99+75 to 106+50		169		
106+50 to 109+50		75					
109+50 to 115+25	575		109+50 to 115+25		144		
115+25 to 117+50		56	115+25 to 117+50	225			
117+50 to 126+50	900		117+50 to 126+50		225		
126+50 to 131+20	470		126+50 to 131+20	470			
	6144	1744		3770	1082		
TOTAL YELLOW			12740			TOTAL WHITE	26092

SCALE 1" = 200'

ROUTE	SECTION	COUNTY	SHEET NO.
FAS 2871	22-00193-00-RS	FRANKLIN	5 OF 7
			CONTRACT 99732



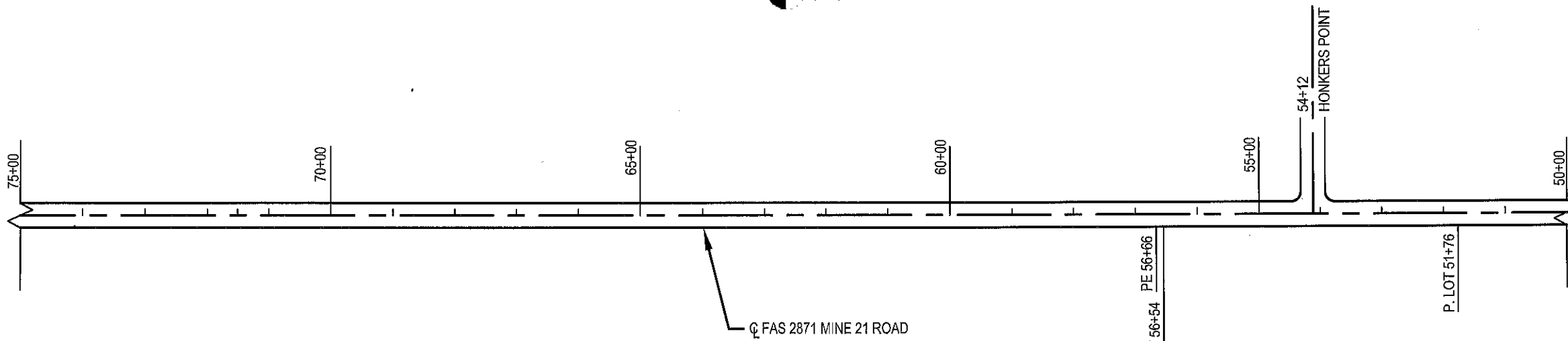
SCALE 1" = 200'



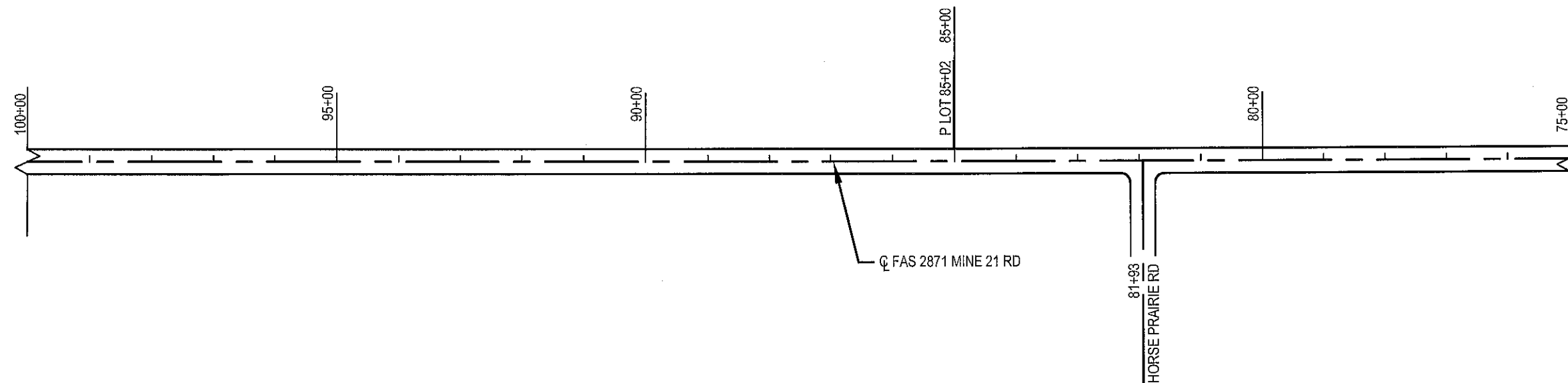
PLAN
STATION 0+00 TO 50+00

SCALE 1" = 200'

ROUTE	SECTION	COUNTY	SHEET NO.
FAS 2871	22-00193-00-RS	FRANKLIN	6 OF 7
CONTRACT 99732			



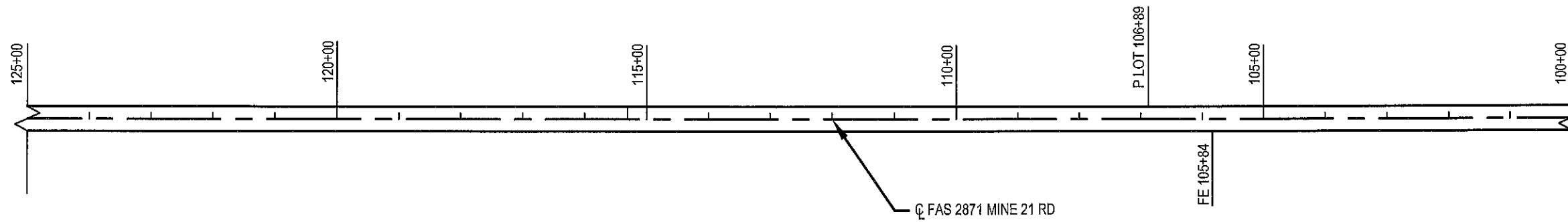
SCALE 1" = 200'



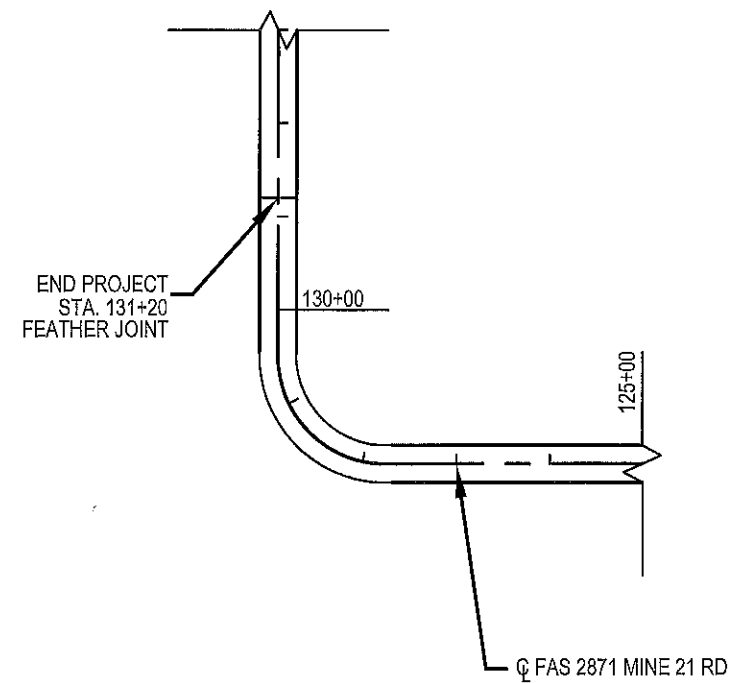
PLAN
STATION 50+00 TO 100+00

SCALE 1" = 200'

ROUTE	SECTION	COUNTY	SHEET NO.
FAS 2871	23-00193-00-RS	FRANKLIN	7 OF 7
CONTRACT 99732			



SCALE 1" = 200'



PLAN
STATION 100+00 TO 131+20