

STATE OF ILLINOIS  
DEPARTMENT OF TRANSPORTATION

F.A. RTE.	SECTION	COUNTY	TOTAL SHEETS	SHEET NO.
	D1 HT PVMNT MRK RPR 24-12	VARIOUS	3	1
		ILLINOIS	CONTRACT NO. 46631	

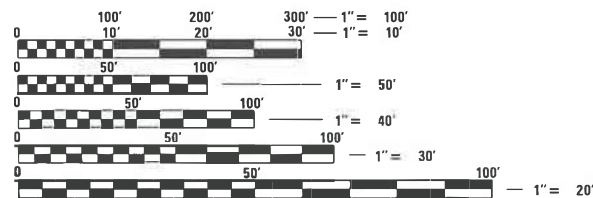
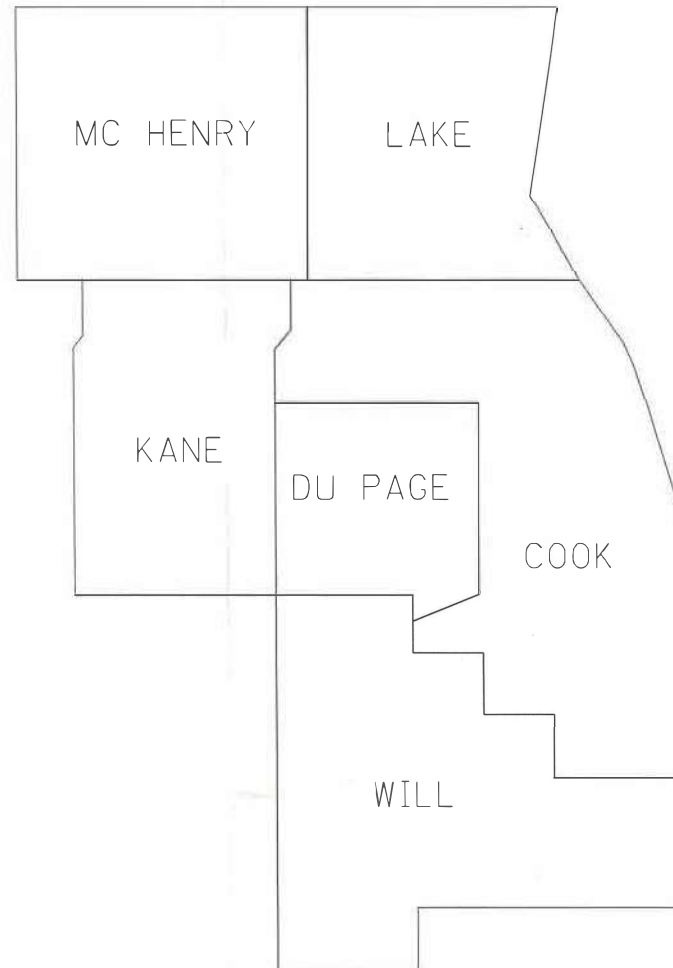
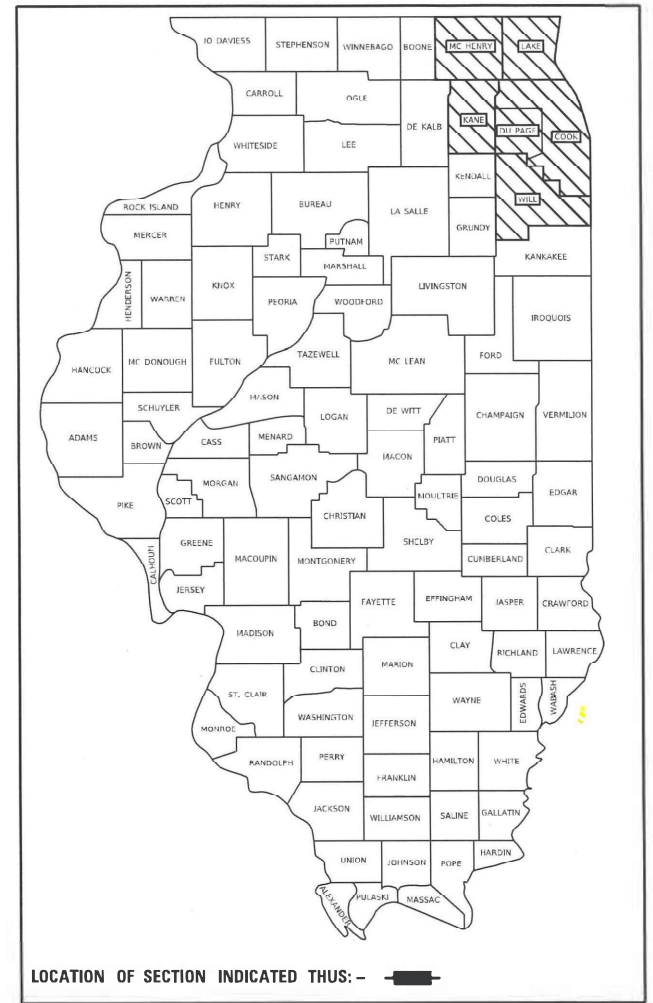
- INDEX OF SHEETS:**  
 1. COVER SHEET  
 2. SUMMARY OF QUANTITIES 1  
 3. SUMMARY OF QUANTITIES 2

**STATE STANDARDS**

- 701311-03 LANE CLOSURE 2L,2W MOVING OPERATIONS-DAY ONLY
- 701426-09 LANE CLOSURE, MULTILANE, INTERMITTENT OR MOVING OPERATION FOR SPEEDS  $\geq$  45MPH
- 701501-06 URBAN LANE CLOSURE 2L,2W, UNDIVIDED
- 701601-09 URBAN LANE CLOSURE, MULTILANE 1W OR 2W WITH NONTRAVERSABLE MEDIAN
- 701606-10 URBAN SINGLE LANE CLOSURE, MULTILANE, 2W WITH MOUTABLE MEDIAN
- 701701-10 URBAN LANE CLOSURE, MULTILANE INTERSECTION
- 701901-09 TRAFFIC CONTROL DEVICES

# PROPOSED HIGHWAY PLANS

VARIOUS ROUTES  
 SECTION D 1 HT PVMNT MRK RPR 24-12  
 HIGH TYPE PAVEMENT MARKING  
 VARIOUS COUNTIES  
 M-60-012-24



FULL SIZE PLANS HAVE BEEN PREPARED USING STANDARD ENGINEERING SCALES. REDUCED SIZED PLANS WILL NOT CONFORM TO STANDARD SCALES. IN MAKING MEASUREMENTS ON REDUCED PLANS, THE ABOVE SCALES MAY BE USED.

J.U.L.I.E.  
 JOINT UTILITY LOCATION INFORMATION FOR EXCAVATION  
 1-800-892-0123  
 OR 811

STATE OF ILLINOIS  
 DEPARTMENT OF TRANSPORTATION

SUBMITTED February 26 20 24

*[Signature]*  
 REGIONAL ENGINEER

May 10, 2024 *[Signature]*  
 ENGINEER OF DESIGN AND ENVIRONMENT

May 10, 2024 *[Signature]*  
 DIRECTOR OF HIGHWAYS PROJECT IMPLEMENTATION

PRINTED BY THE AUTHORITY  
 OF THE STATE OF ILLINOIS

## SUMMARY OF QUANTITIES

CODE NO.	ITEM	UNIT	TOTAL QUANTITY	CONSTRUCTION CODE PAVEMENT MARKING 100% STATE ROADWAY 0021
78000100	THERMOPLASTIC PAVEMENT MARKING - LETTERS AND SYMBOLS	SQ FT	50,000	50,000
78000200	THERMOPLASTIC PAVEMENT MARKING - LINE 4"	FOOT	600,000	600,000
78000400	THERMOPLASTIC PAVEMENT MARKING - LINE 6"	FOOT	200,000	200,000
78000500	THERMOPLASTIC PAVEMENT MARKING - LINE 8"	FOOT	20,000	20,000
78000600	THERMOPLASTIC PAVEMENT MARKING - LINE 12"	FOOT	50,000	50,000
78000620	THERMOPLASTIC PAVEMENT MARKING - LINE 18"	FOOT	200	200
78000650	THERMOPLASTIC PAVEMENT MARKING - LINE 24"	FOOT	20,000	20,000
78004635	PREFORMED PLASTIC PAVEMENT MARKING, TYPE D - LINE 7"	FOOT	200,000	200,000
78006100	PREFORMED THERMOPLASTIC PAVEMENT MARKING - LETTERS AND SYMBOLS	SQ FT	500	500
78006110	PREFORMED THERMOPLASTIC PAVEMENT MARKING - LINE 4"	FOOT	1,000	1,000
78006130	PREFORMED THERMOPLASTIC PAVEMENT MARKING - LINE 6"	FOOT	1,000	1,000
78006140	PREFORMED THERMOPLASTIC PAVEMENT MARKING - LINE 8"	FOOT	500	500
78006150	PREFORMED THERMOPLASTIC PAVEMENT MARKING - LINE 12"	FOOT	500	500
78006164	PREFORMED THERMOPLASTIC PAVEMENT MARKING - LINE 18"	FOOT	100	100
78006180	PREFORMED THERMOPLASTIC PAVEMENT MARKING - LINE 24"	FOOT	500	500

MODEL: Default  
PLT: Model\_Plot\_Contract.dwg  
C:\Users\David\OneDrive\Documents\Contract.dwg

USER NAME = David.Gonzalez2	DESIGNED -	REVISED -	<b>STATE OF ILLINOIS DEPARTMENT OF TRANSPORTATION</b>	<b>SUMMARY OF QUANTITIES 1</b>			F.A. RTE.	SECTION	COUNTY	TOTAL SHEETS	SHEET NO.	
PLOT SCALE = 103.4724' / in.	DRAWN -	REVISED -		SCALE:	SHEET 2	OF 3	SHEETS	STA.	TO STA.	VARIOUS	3	2
PLOT DATE = 2/22/2024	CHECKED -	REVISED -		CONTRACT NO. 46631								
	DATE -	REVISED -		ILLINOIS FED. AID PROJECT								

## SUMMARY OF QUANTITIES

CODE NO.	ITEM	UNIT	TOTAL QUANTITY	CONSTRUCTION CODE PAVEMENT MARKING 100% STATE ROADWAY 0021
78009000	MODIFIED URETHANE PAVEMENT MARKING - LETTERS AND SYMBOLS	SQ FT	60,000	60,000
78009004	MODIFIED URETHANE PAVEMENT MARKING - LINE 4"	FOOT	800,000	800,000
78009006	MODIFIED URETHANE PAVEMENT MARKING - LINE 6"	FOOT	300,000	300,000
78009008	MODIFIED URETHANE PAVEMENT MARKING - LINE 8"	FOOT	80,000	80,000
78009012	MODIFIED URETHANE PAVEMENT MARKING - LINE 12"	FOOT	50,000	50,000
78009018	MODIFIED URETHANE PAVEMENT MARKING - LINE 18"	FOOT	200	200
78009024	MODIFIED URETHANE PAVEMENT MARKING - LINE 24"	FOOT	25,000	25,000
78011040	GROOVING FOR RECESSED PAVEMENT MARKING 8"	FOOT	200,000	200,000
78300201	PAVEMENT MARKING REMOVAL - GRINDING	SQ FT	400,000	400,000
78300202	PAVEMENT MARKING REMOVAL - WATER BLASTING	SQ FT	100,000	100,000
X7800815	HOT SPRAY THERMOPLASTIC PAVEMENT MARKING LINE - 4 INCH	FOOT	900,000	900,000
X7800835	HOT SPRAY THERMOPLASTIC PAVEMENT MARKING LINE - 6 INCH	FOOT	10,000	10,000
X7800845	HOT SPRAY THERMOPLASTIC PAVEMENT MARKING LINE - 8 INCH	FOOT	15,000	15,000

MODEL: D:\p\jr MODEL: D:\p\jr  
FILE NAME: S:\S\Contract\CAD\CoverSheets for Contracts.dgn

USER NAME = David.Gonzalez2
PLOT SCALE = 102.9335' / in.
PLOT DATE = 2/22/2024

DESIGNED -
DRAWN -
CHECKED -
DATE -

REVISED -
REVISED -
REVISED -
REVISED -

**STATE OF ILLINOIS  
DEPARTMENT OF TRANSPORTATION**

**SUMMARY OF QUANTITIES 2**

SCALE: SHEET 3 OF 3 SHEETS STA. TO STA.

F.A. RTE.	SECTION	COUNTY	TOTAL SHEETS	SHEET NO.
D1 HT Pvmnt Mrk RPR 24-12	VARIOUS	VARIOUS	3	3
CONTRACT NO. 46631				
ILLINOIS FED. AID PROJECT				