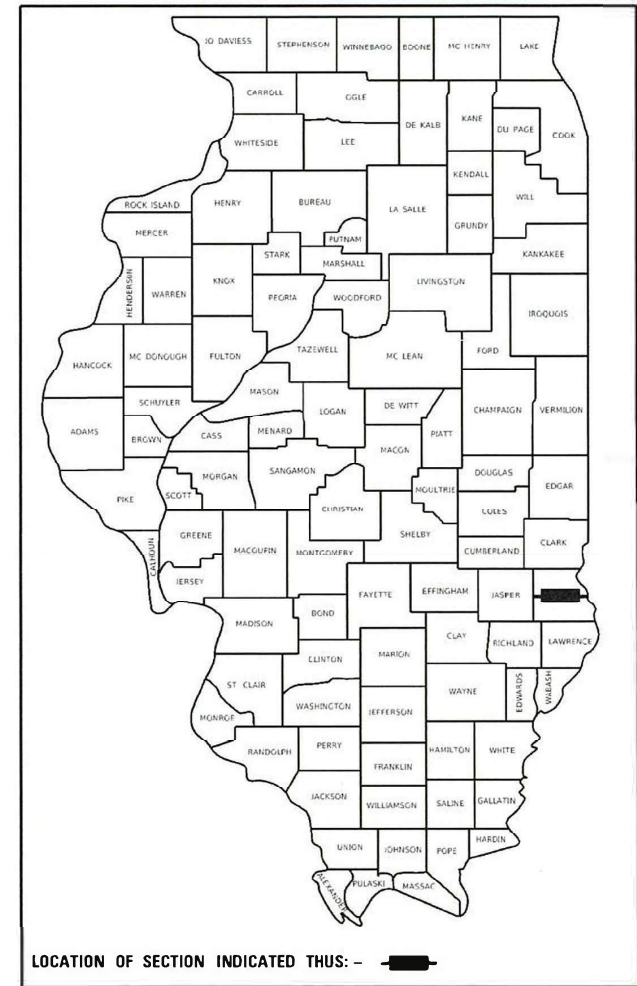


STATE OF ILLINOIS
DEPARTMENT OF TRANSPORTATION

F.A.P. R.I.E.	SECTION	COUNTY	TOTAL SHEETS	SHEET NO.
781	1RS-4	CRAWFORD	25	1
		ILLINOIS	CONTRACT NO. 74B53	

D-97-074-22



LOCATION OF SECTION INDICATED THUS: - [highlighted rectangle symbol]

PROPOSED HIGHWAY PLANS

FAP ROUTE 781 (ILL 33)
SECTION 1RS-4
PROJECT STP-7QRZ(404)
SMART OVERLAY
CRAWFORD COUNTY

C-97-124-22

FOR INDEX OF SHEETS, SEE SHEET NO. 2

ADT (2023) = 6000
% TRUCKS = 11.3%

OMISSIONS

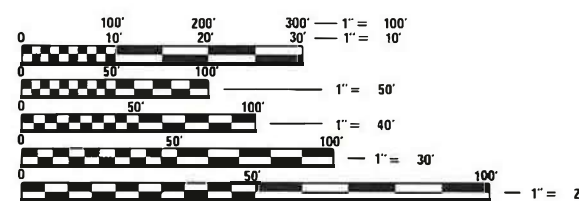
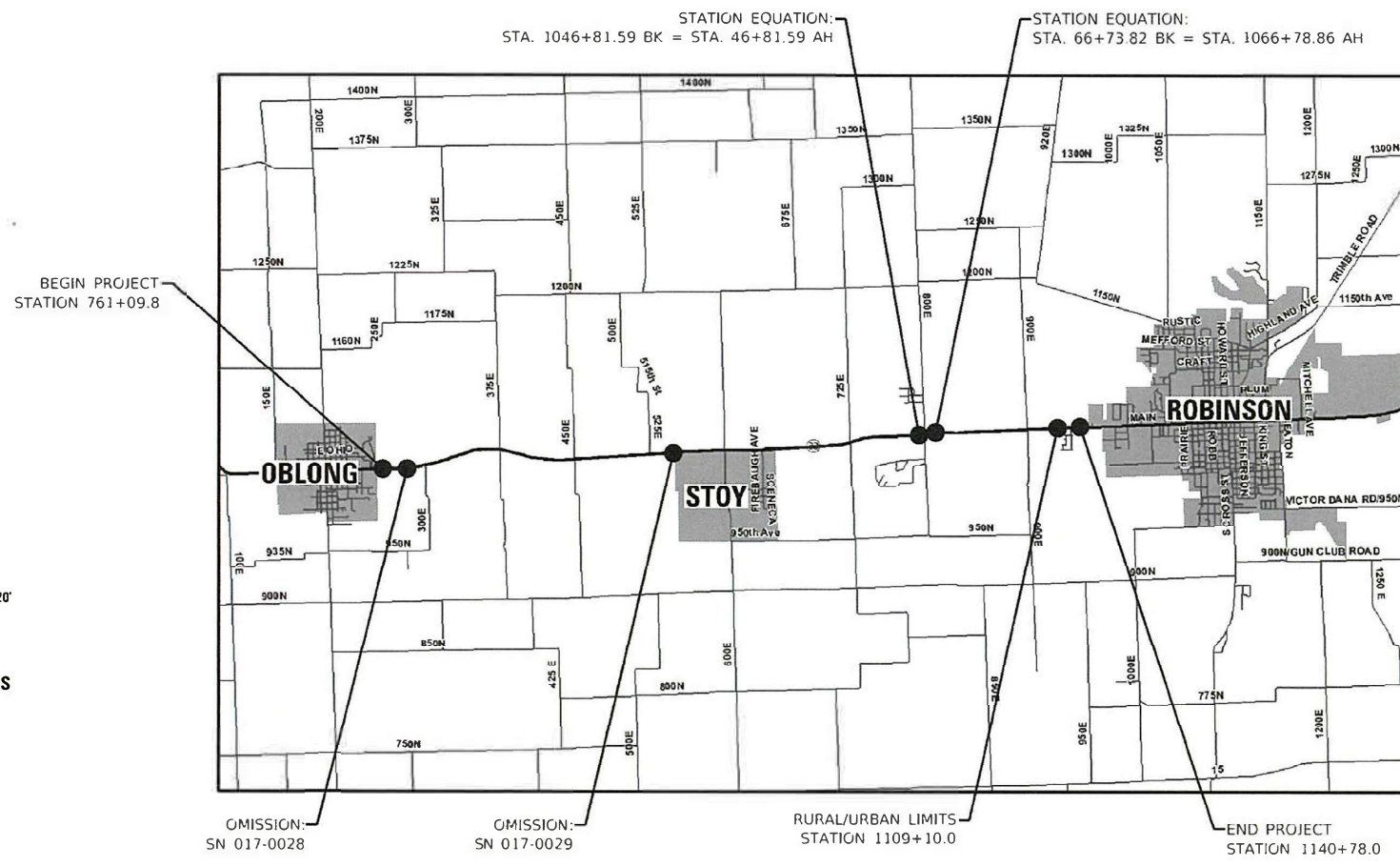
SN 017-0028: STATION 775+50.0 TO 777+00.0
SN 017-0029: STATION 924+81.0 TO 927+21.0

STATION EQUATIONS

STA. 1046+81.59 BK = STA. 46+81.59 AH
STA. 66+73.82 BK = STA. 1066+78.86 AH

RURAL /URBAN LIMITS

STATION 1109+10.0



FULL SIZE PLANS HAVE BEEN PREPARED USING STANDARD ENGINEERING SCALES. REDUCED SIZED PLANS WILL NOT CONFORM TO STANDARD SCALES. IN MAKING MEASUREMENTS ON REDUCED PLANS, THE ABOVE SCALES MAY BE USED.

J.U.L.I.E.
JOINT UTILITY LOCATION INFORMATION FOR EXCAVATORS
1-800-892-0123
OR 811

PROJECT ENGINEER: JACQUELYN SEALS
PROJECT MANAGER: LEAH HILLE

CONTRACT NO. 74B53

GROSS LENGTH = 37964.0 FT. = 7.19 MILES
NET LENGTH = 37574.0 FT. = 7.12 MILES

STATE OF ILLINOIS
DEPARTMENT OF TRANSPORTATION

SUBMITTED April 29 2024
Jeffrey P. Myrka REGIONAL ENGINEER

May 10, 2024 [Signature]
ENGINEER OF DESIGN AND ENVIRONMENT

May 10, 2024 [Signature]
DIRECTOR OF HIGHWAYS PROJECT IMPLEMENTATION

PRINTED BY THE AUTHORITY OF THE STATE OF ILLINOIS

GENERAL NOTES

WHEN APPLYING SHORT TERM PAVEMENT MARKINGS, TEMPORARY TAPE SHALL BE USED ON THE SURFACE AND PAINT SHALL BE USED ON THE MILLED SURFACE.

A UNIFORMLY STRAIGHT SAW CUT SHALL BE MADE AT LOCATIONS WHERE PROPOSED NEW CONSTRUCTION WILL ABUT EXISTING HOT-MIX ASPHALT SURFACES. THE SAW CUT SHALL BE MADE THE SAME DEPTH AS THE HOT-MIX ASPHALT SURFACE REMOVAL. THIS WORK WILL BE CONSIDERED INCLUDED IN THE COST OF THE CONTRACT ITEMS INVOLVED AND NO EXTRA COMPENSATION WILL BE ALLOWED.

INDEX OF SHEETS

SHEET NO.	ITEM
1	COVER SHEET
2	INDEX OF SHEETS, LIST OF STANDARDS, AND GENERAL NOTES
3	SUMMARY OF QUANTITIES
4	TYPICAL SECTIONS
5-7	SCHEDULE OF QUANTITIES
8-20	PLAN SHEETS
21-25	DISTRICT 7 DETAILS

THE FOLLOWING STANDARDS ARE A PART OF THESE PLANS AND ARE INCLUDED AFTER SHEET NO. 25:

STANDARD NO.	DESCRIPTION
000001-08	STANDARD SYMBOLS, ABBREVIATIONS AND PATTERNS
001001-02	AREAS OF REINFORCEMENT BARS
001006	DECIMAL OF AN INCH AND OF A FOOT
406201-01	MAILBOX TURNOUT
442201-03	CLASS C AND D PATCHES
667101-02	PERMANENT SURVEY MARKERS
701001-02	OFF-ROAD OPERATIONS, 2L, 2W, MORE THAN 15' AWAY
701006-05	OFF-ROAD OPERATIONS, 2L, 2W, 15' TO 24" FROM PAVEMENT EDGE
701011-04	OFF-ROAD MOVING OPERATIONS, 2L, 2W, DAY ONLY
701201-05	LANE CLOSURE, 2L, 2W, DAY ONLY, FOR SPEEDS ≥ 45 MPH
701301-04	LANE CLOSURE, 2L, 2W, SHORT TIME OPERATIONS
701306-04	LANE CLOSURE, 2L, 2W, MOVING OPERATIONS DAY ONLY, FOR SPEEDS ≥ 45 MPH
701311-03	LANE CLOSURE, 2L, 2W, MOVING OPERATIONS - DAY ONLY
701901-09	TRAFFIC CONTROL DEVICES
780001-05	TYPICAL PAVEMENT MARKINGS
781001-04	TYPICAL APPLICATIONS RAISED REFLECTIVE PAVEMENT MARKERS

APPLICATION RATES

THE FOLLOWING APPLICATION RATES WERE USED IN CALCULATING PLAN QUANTITIES AND HAVE BEEN INCLUDED FOR REFERENCE:

BITUMINOUS MATERIALS (TACK COAT)	0.05 LB/SQ FT (ON MILLED SURFACES)
	0.025 LB/SQ FT (ON HMA LIFTS)
AGGREGATE SURFACE COURSE AND SHOULDER	2.05 TON/CU YD

MIXTURE REQUIREMENTS

THE FOLLOWING MIXTURE REQUIREMENTS ARE APPLICABLE TO THIS PROJECT:

LOCATION(S)	MIXTURE USE(S)	PG	DESIGN AIR VOIDS	MIXTURE COMPOSITION	FRICTION AGGREGATE	MIXTURE WEIGHT	QUALITY MANAGEMENT PROGRAM	SUBLOT SIZE	MATERIAL TRANSFER DEVICE (REQUIRED?)
MAINLINE	POLYMERIZED HMA SURFACE COURSE, IL-9.5, MIX "D", N90 (1.5")	PG 70-22	4.0% @ N=90	IL - 9.5	MIXTURE D	N90	PFP	1000	N/A
INCIDENTAL	HMA SURFACE COURSE, IL-9.5, MIX "C", N70	PG 64-22	4.0% @ N=70	IL - 9.5	MIXTURE C	N70	QC/QA	3000	N/A
PATCHING	HMA BINDER COURSE, IL-19.0, N90	PG 64-22	4.0% @ N=90	IL - 19.0	N/A	N90	QC/QA	3000	N/A

REV. - MS

MODEL: Default
 FILE: M:\GIS\p1\illinois-bentley.com\PROJECTS\DOT_Offices\District_7\Project\74853\CADD\DATA\CAD\sheet\074853-sh-general.dgn

USER NAME = jessica.hille	DESIGNED - LMH	REVISED -	STATE OF ILLINOIS DEPARTMENT OF TRANSPORTATION	INDEX OF SHEETS & GENERAL NOTES			F.A.P. RTE.	SECTION	COUNTY	TOTAL SHEETS	SHEET NO.
PLOT SCALE = 100.0000' / in.	DRAWN - LMH	REVISED -					781	1RS-4	CRAWFORD	25	2
PLOT DATE = 3/21/2024	CHECKED -	REVISED -		SCALE: NO SCALE SHEET 1 OF 1 SHEETS STA. TO STA.			CONTRACT NO. 74853				
DATE = 3/21/2024	DATE = 3/21/2024	REVISED -					ILLINOIS FED. AID PROJECT				

SUMMARY OF QUANTITIES			TOTAL QUANTITIES	CONSTRUCTION TYPE CODE		
CODE NO	ITEM	UNIT		0005 RURAL 80% FEDERAL 20% STATE	0005 URBAN 80% FEDERAL 20% STATE	
40200800	AGGREGATE SURFACE COURSE, TYPE B	TON	90	85	5	
40600290	BITUMINOUS MATERIALS (TACK COAT)	POUND	59110	54358	4752	
40600370	LONGITUDINAL JOINT SEALANT	FOOT	37574	34406	3168	
40600990	TEMPORARY RAMP	SQ YD	100	83	17	
40604164	POLYMERIZED HOT-MIX ASPHALT SURFACE COURSE, IL 9.5, MIX "D", N90	TON	11040	10153	887	
40800050	INCIDENTAL HOT-MIX ASPHALT SURFACING	TON	820	727	93	
44000155	HOT-MIX ASPHALT SURFACE REMOVAL, 1 1/2"	SQ YD	128300	117740	10560	
44201803	CLASS D PATCHES, TYPE II, 13 INCH	SQ YD	712	613.8	98.2	
44201807	CLASS D PATCHES, TYPE III, 13 INCH	SQ YD	54.9	34.3	20.6	
67000400	ENGINEER'S FIELD OFFICE, TYPE A	CAL MO	3	2.7	0.3	
67000600	ENGINEER'S FIELD LABORATORY	CAL MO	3	2.7	0.3	
67100100	MOBILIZATION	L SUM	1	0.9	0.1	
70100450	TRAFFIC CONTROL AND PROTECTION, STANDARD 701201	L SUM	1	0.9	0.1	

SUMMARY OF QUANTITIES			TOTAL QUANTITIES	CONSTRUCTION TYPE CODE		
CODE NO	ITEM	UNIT		0005 RURAL 80% FEDERAL 20% STATE	0005 URBAN 80% FEDERAL 20% STATE	
70100460	TRAFFIC CONTROL AND PROTECTION, STANDARD 701306	L SUM	1	0.9	0.1	
70107025	CHANGEABLE MESSAGE SIGN	CAL DA	28	14	14	
70300100	SHORT TERM PAVEMENT MARKING	FOOT	20510	18800	1710	
70300150	SHORT TERM PAVEMENT MARKING REMOVAL	SQ FT	4560	4180	380	
* 78001110	PAINT PAVEMENT MARKING - LINE 4"	FOOT	100900	93180	7720	
* 78100100	RAISED REFLECTIVE PAVEMENT MARKER	EACH	470	430	40	
78300200	RAISED REFLECTIVE PAVEMENT MARKER REMOVAL	EACH	470	430	40	
X0326440	SURFACE REMOVAL, VARIABLE DEPTH (SPECIAL)	SQ YD	9370	8268	1102	
X2020110	GRADING AND SHAPING SHOULDERS	UNIT	760	697	63	
X4060995	TEMPORARY RAMP (SPECIAL)	SQ YD	2170	1917	253	
Z0049799	PROTECTING OR RESETTING SURVEY MARKERS	EACH	38	38		

* SPECIALTY ITEM

REV. - MS

MODEL: Default
FILE: Model - 781.tbl
PROJECT: 781.tbl

USER NAME = Default	DESIGNED = LMH	REVISED =
DRAWN = LMH	CHECKED =	REVISED =
PLT SCALE = 100.0000 * / in.	DATE = 4/24/2024	REVISED =

STATE OF ILLINOIS
DEPARTMENT OF TRANSPORTATION

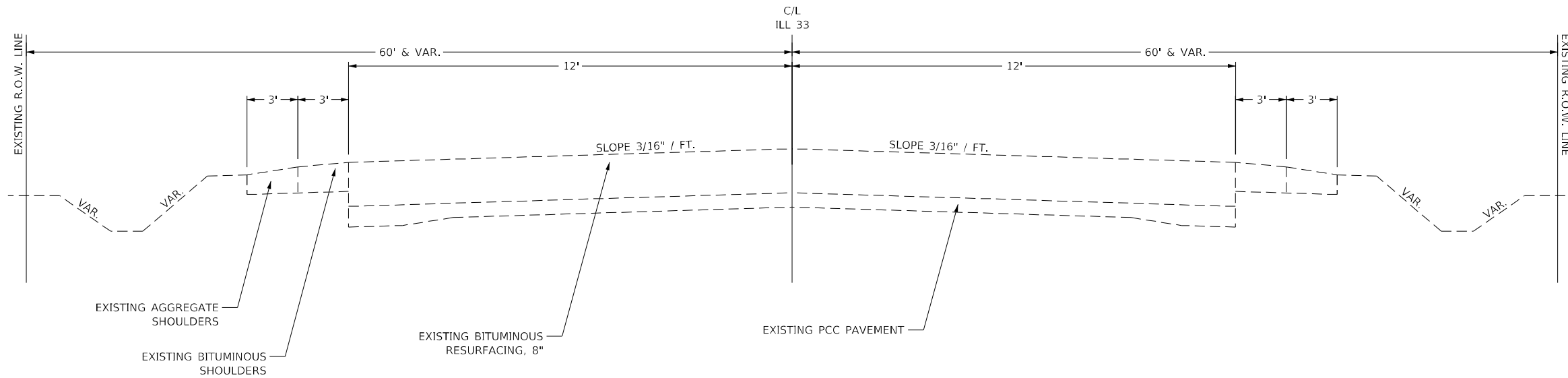
SUMMARY OF QUANTITIES

SCALE: NO SCALE SHEET 1 OF 1 SHEETS STA. T STA.

F.A.P. RTE.	SECTION	COUNTY	TOTAL SHEETS	SHEET NO.
781	1RS-4	CRAWFORD	25	3
CONTRACT NO. 74853				
ILLINOIS FED. AID PROJECT				

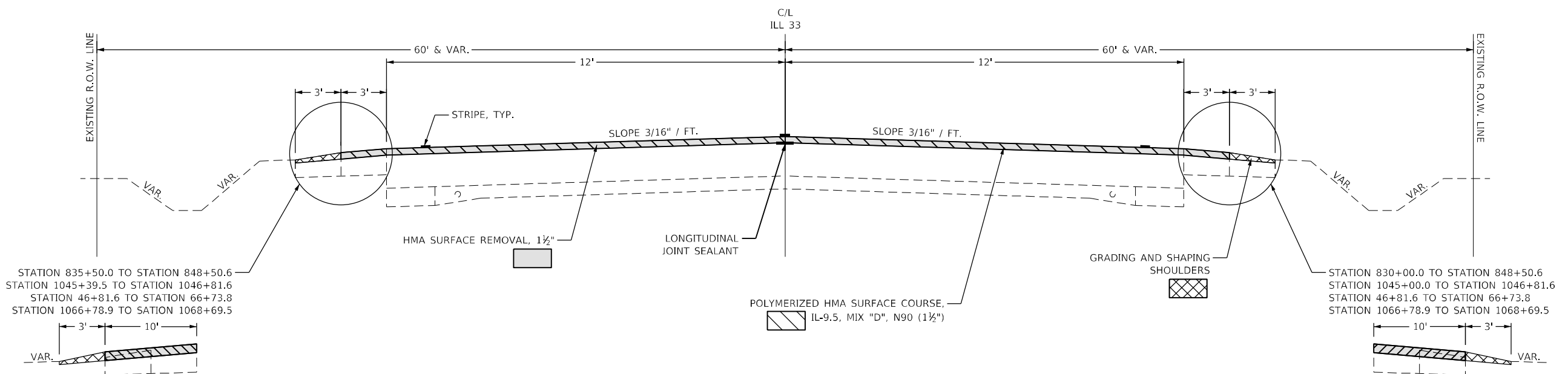
EXISTING TYPICAL CROSS SECTIONS (ILL 33)

STATION 761+09.8 TO STATION 775+50.0
 BRIDGE OMISSION: 775+50.0 TO 777+00.0
 STATION 777+00.0 TO STATION 924+81.0
 BRIDGE OMISSION: 924+81.0 TO 927+21.0
 STATION 927+21.0 TO STATION 1046+81.6
 STATION EQUATION: 1046+81.59 BK = 46+81.59 AH
 STATION 46+81.6 TO STATION 66+73.8
 STATION EQUATION: 66+73.82 BK = 1066+78.86 AH
 STATION 1066+78.9 TO STATION 1140+78.0



PROPOSED TYPICAL CROSS SECTIONS (ILL 33)

STATION 761+09.8 TO STATION 775+50.0
 BRIDGE OMISSION: 775+50.0 TO 777+00.0
 STATION 777+00.0 TO STATION 924+81.0
 BRIDGE OMISSION: 924+81.0 TO 927+21.0
 STATION 927+21.0 TO STATION 1046+81.6
 STATION EQUATION: 1046+81.59 BK = 46+81.59 AH
 STATION 46+81.6 TO STATION 66+73.8
 STATION EQUATION: 66+73.82 BK = 1066+78.86 AH
 STATION 1066+78.9 TO STATION 1140+78.0



MODEL: Default
 FILE: \\mdepc-pw-beadefy.com\P\DOT\Documents\DOT Office\Director_T\Project\74B53\CADD\DATA\CAD\Sheet\74B53-shc1typical.dgn

USER NAME = jessica.hille	DESIGNED - LMH	REVISED -
DRAWN - LMH	REVISOR -	
PLOT SCALE = 100,0000' / in.	CHECKED -	REVISOR -
PLOT DATE = 3/21/2024	DATE - 3/21/2024	REVISOR -

**STATE OF ILLINOIS
 DEPARTMENT OF TRANSPORTATION**

TYPICAL SECTIONS			
SCALE: NO SCALE	SHEET 1	OF 1 SHEETS	STA. TO STA.

F.A.P. RTE.	SECTION	COUNTY	TOTAL SHEETS	SHEET NO.
781	1RS-4	CRAWFORD	25	4
CONTRACT NO. 74B53				
ILLINOIS FED. AID PROJECT				

PERMANENT SURVEY MARKERS

Z0049799
PROTECTING OR
RESETTING SURVEY
MARKERS

Table with columns: POINT NUMBER, NORTHING, EASTING, DESCRIPTION, STATION, O/S, PROPOSED PROTECT OR RESET, EACH. Contains 38 rows of marker data and a TOTALS row.

PAVEMENT MARKING SCHEDULE

Table with columns: STATION TO STATION, LENGTH, 70300100 SHORT TERM PAVEMENT MARKING, 70300150 SHORT TERM PAVEMENT MARKING REMOVAL, 78001110 PAINT PAVEMENT MARKING - LINE 4" (YELLOW), 78001110 PAINT PAVEMENT MARKING - LINE 4" (WHITE). Includes station equations and rural/urban/overall totals.

PATCHING SCHEDULE

Table with columns: LANE, TYPE 2 SQ YD, TYPE 3 SQ YD. Includes lane types like WESTBOUND RURAL, EASTBOUND RURAL, etc., and a TOTAL row.

STATE OF ILLINOIS DEPARTMENT OF TRANSPORTATION

SCHEDULE OF QUANTITIES

User information table with columns: USER NAME, DESIGNED, REVISIONS, DRAWN, CHECKED, PLOT DATE.

SCALE: NO SCALE SHEET 1 OF 3 SHEETS STA. TO STA.

F.A.P. information table with columns: SECTION, COUNTY, TOTAL SHEETS, SHEET NO., CONTRACT NO. 74B53.

Model - Default FILE: \\nrcs01dca-pro-bentley.com\PWIDOT\Documents\DOT Officess\Director_Z\Projects\74B53\CADDData\CAD\Sheet\74B53-414.ctb; path is long

EXIST. CURVE PS6
 PI STA. = 772+01.72
 $\Delta = 11^\circ 31' 04''$ (LT)
 $D = 2^\circ 00' 11''$
 $R = 2,860.34'$
 $T = 288.47'$
 $L = 575.00'$
 $E = 14.51'$
 $e =$
 $T.R. =$
 $S.E. RUN =$
 $P.C. STA. = 769+13.25$
 $P.T. STA. = 774+88.25$



EXIST. CURVE PS5
 PI STA. = 760+01.08
 $\Delta = 5^\circ 18' 28''$ (RT)
 $D = 3^\circ 01' 22''$
 $R = 1,895.52'$
 $T = 87.86'$
 $L = 175.60'$
 $E = 2.04'$
 $e =$
 $T.R. =$
 $S.E. RUN =$
 $P.C. STA. = 759+13.21$
 $P.T. STA. = 760+88.81$

BEGIN PROJECT:
 STATION 761+09.8

MATCHLINE STATION 773+94.5

EXIST. CURVE PS7
 PI STA. = 788+24.99
 $\Delta = 9^\circ 41' 30''$ (LT)
 $D = 0^\circ 32' 15''$
 $R = 10,659.76'$
 $T = 903.71'$
 $L = 1,803.10'$
 $E = 38.24'$
 $e =$
 $T.R. =$
 $S.E. RUN =$
 $P.C. STA. = 779+21.29$
 $P.T. STA. = 797+24.39$



BRIDGE OMISSION:
 SN 017-0028

MATCHLINE STATION 788+73.0

MODEL: Default
 FILE: Mainfile.pwd
 PROJECT: 74853\CADD\DATA\CAD\PROJECTS\74853-SP\Sheet.dwg

MATCHLINE STATION 773+94.5

STATE OF ILLINOIS
 DEPARTMENT OF TRANSPORTATION

PLAN SHEETS

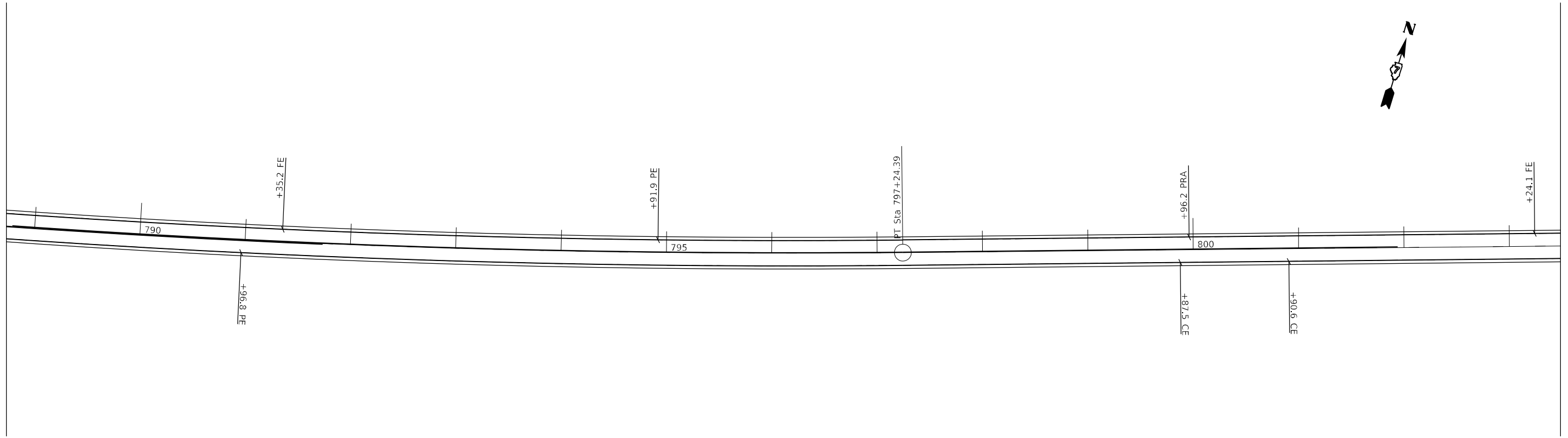
USER NAME = jessica.hille	DESIGNED - LMH	REVISED -
DRAWN - LMH	REVISED -	
PLOT SCALE = 100,0000' / in.	CHECKED -	REVISED -
PLOT DATE = 3/21/2024	DATE - 3/21/2024	REVISED -

SCALE: 100,0000' / in SHEET 1 OF 13 SHEETS STA. TO STA.

F.A.P. RTE.	SECTION	COUNTY	TOTAL SHEETS	SHEET NO.
781	1RS-4	CRAWFORD	25	8
CONTRACT NO. 74853				
ILLINOIS FED. AID PROJECT				

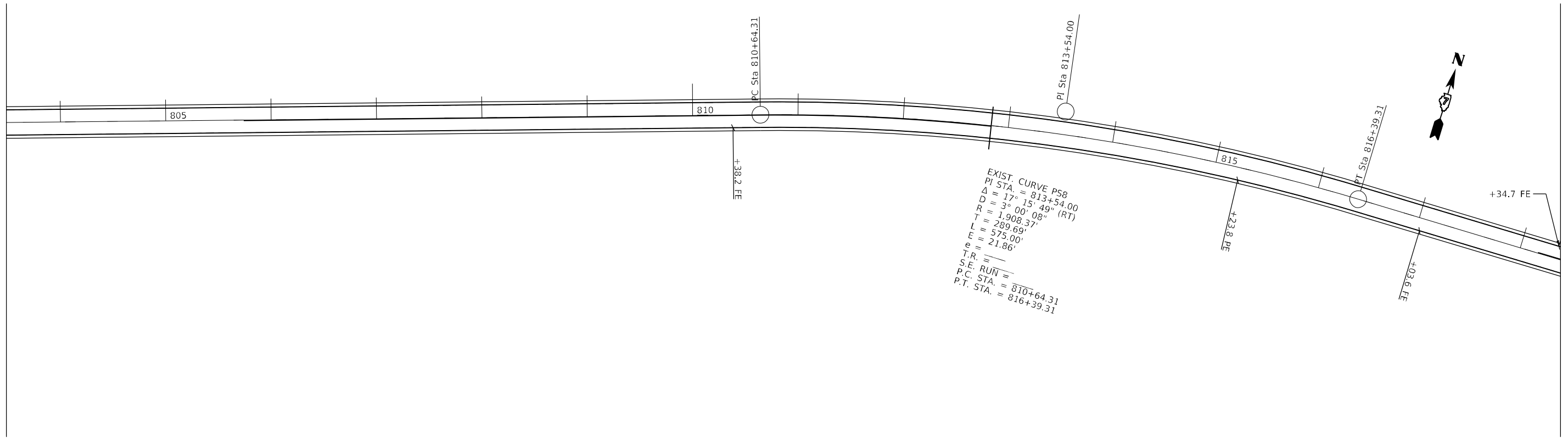
MODEL: Default
 FILE: 74853_roaddata\CAD\Drawings\74853-1-1.dwg

MATCHLINE STATION 788 + 73.0



MATCHLINE STATION 803 + 48.5

MATCHLINE STATION 803 + 48.5



MATCHLINE STATION 818 + 40.0

USER NAME = jessica.hille	DESIGNED - LMH	REVISED -
	DRAWN - LMH	REVISED -
PLOT SCALE = 100,0000' / in.	CHECKED -	REVISED -
PLOT DATE = 3/21/2024	DATE - 3/21/2024	REVISED -

STATE OF ILLINOIS
 DEPARTMENT OF TRANSPORTATION

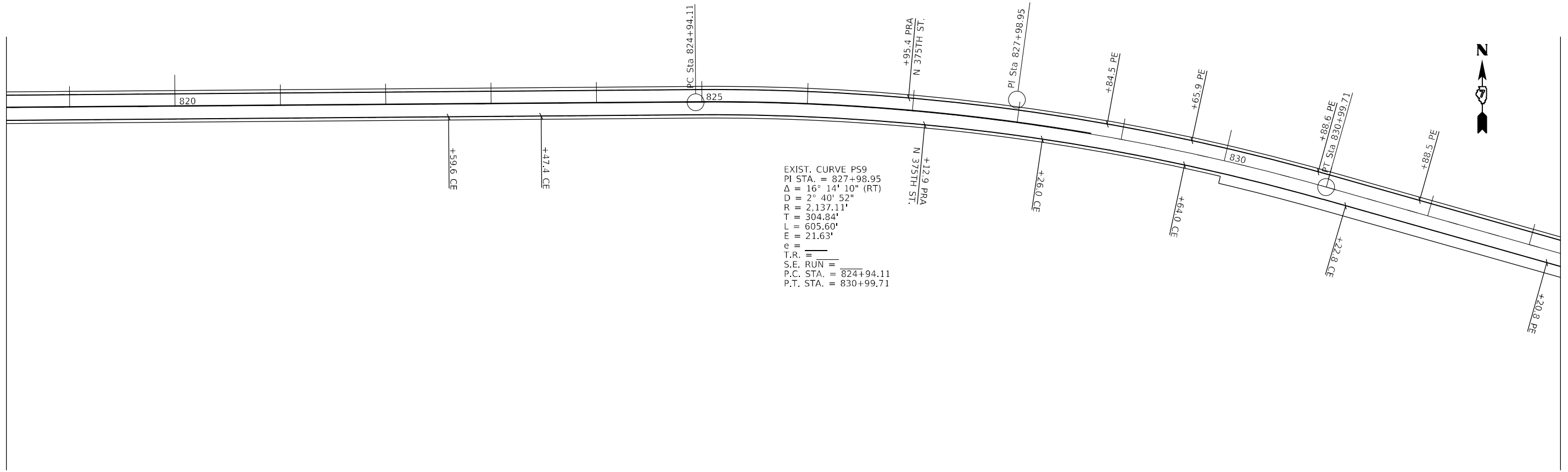
PLAN SHEETS

SCALE: 100,0000' / in SHEET 2 OF 13 SHEETS STA. TO STA.

F.A.P. RTE.	SECTION	COUNTY	TOTAL SHEETS	SHEET NO.
781	1RS-4	CRAWFORD	25	9
CONTRACT NO. 74853				
ILLINOIS FED. AID PROJECT				

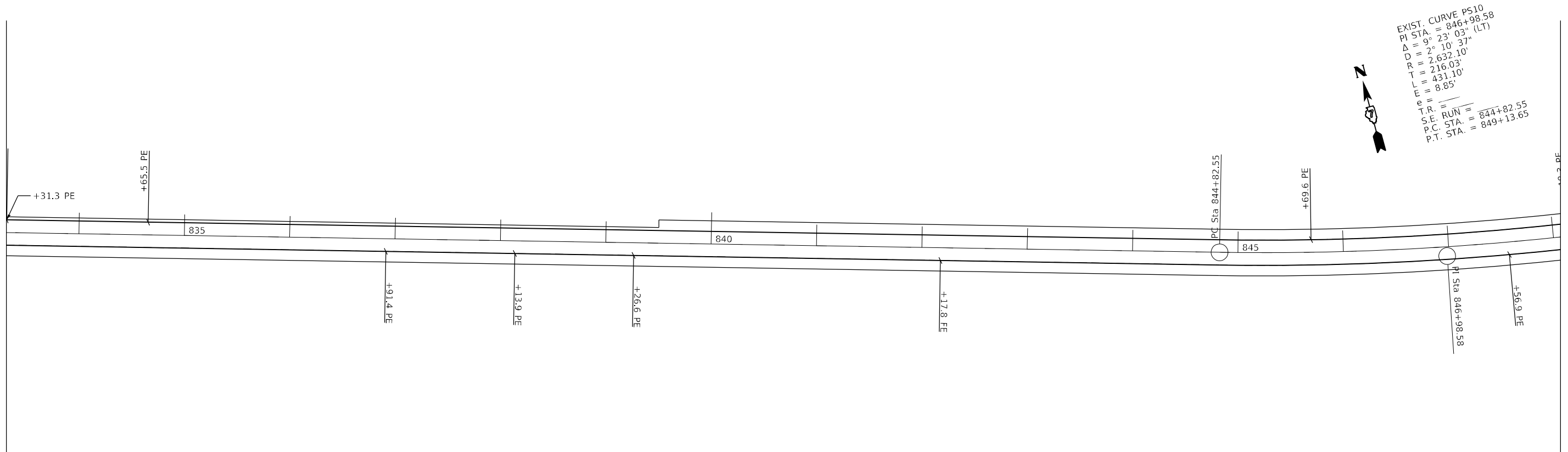
MODEL: Default
 FILE NAME: p:\project-aw-bead\paw.com\p\indot\documents\DOT_offices\dir\dr_7\project\74853\CADD\DATA\CAD\sheet\74853-she1.dwg

MATCHLINE STATION 818 + 40.0



MATCHLINE STATION 833 + 31.0

MATCHLINE STATION 833 + 31.0



MATCHLINE STATION 848 + 06.5

USER NAME = jessica.hille	DESIGNED - LMH	REVISED -
DRAWN - LMH	REVISED -	
PLOT SCALE = 100,0000' / in.	CHECKED -	REVISED -
PLOT DATE = 3/21/2024	DATE - 3/21/2024	REVISED -

STATE OF ILLINOIS
 DEPARTMENT OF TRANSPORTATION

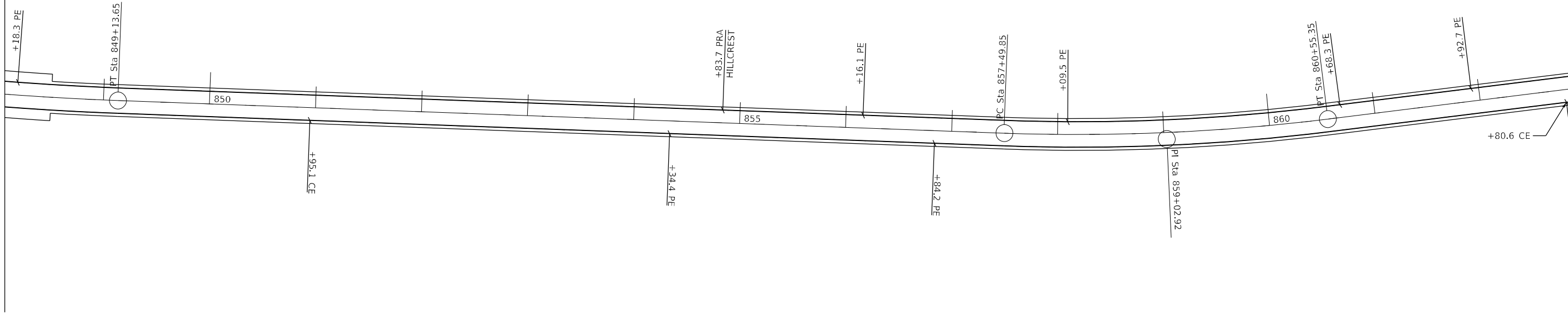
PLAN SHEETS

SCALE: 100,0000' / in SHEET 3 OF 13 SHEETS STA. TO STA.

F.A.P. RTE.	SECTION	COUNTY	TOTAL SHEETS	SHEET NO.
781	1RS-4	CRAWFORD	25	10
CONTRACT NO. 74853			ILLINOIS FED. AID PROJECT	

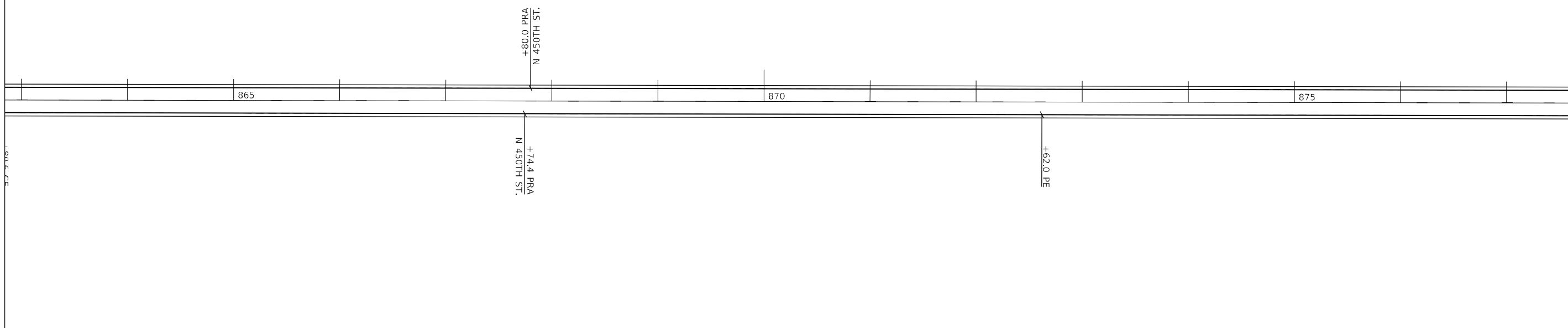
MODEL: Default
 FILE NAME: p:\project-aw-bead\paw.com\p\INDOT\Documents\DOT Office\Director_7\Project\74B53\CADD\DATA\CAD\Sheet\74B53-she4.dwg

MATCHLINE STATION 848 + 06.5



MATCHLINE STATION 862 + 84.5

MATCHLINE STATION 862 + 84.5



MATCHLINE STATION 877 + 59.0

USER NAME = jessica.hille	DESIGNED - LMH	REVISED -
	DRAWN - LMH	REVISED -
PLOT SCALE = 100,0000 ' / in.	CHECKED -	REVISED -
PLOT DATE = 3/21/2024	DATE - 3/21/2024	REVISED -

**STATE OF ILLINOIS
 DEPARTMENT OF TRANSPORTATION**

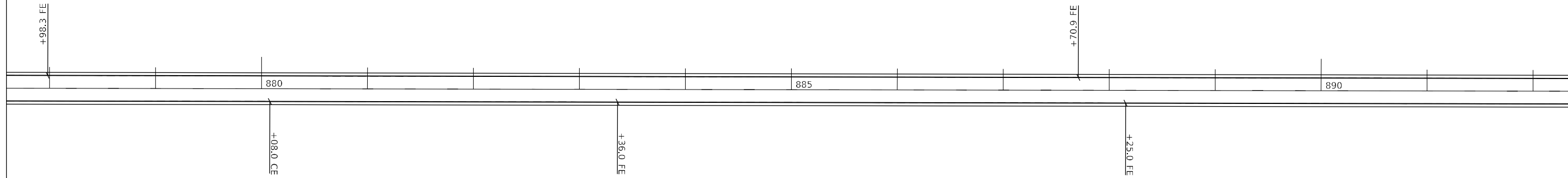
PLAN SHEETS

SCALE: 100,0000 ' / in SHEET 4 OF 13 SHEETS STA. TO STA.

F.A.P. RTE.	SECTION	COUNTY	TOTAL SHEETS	SHEET NO.
781	1RS-4	CRAWFORD	25	11
CONTRACT NO. 74B53				
ILLINOIS FED. AID PROJECT				

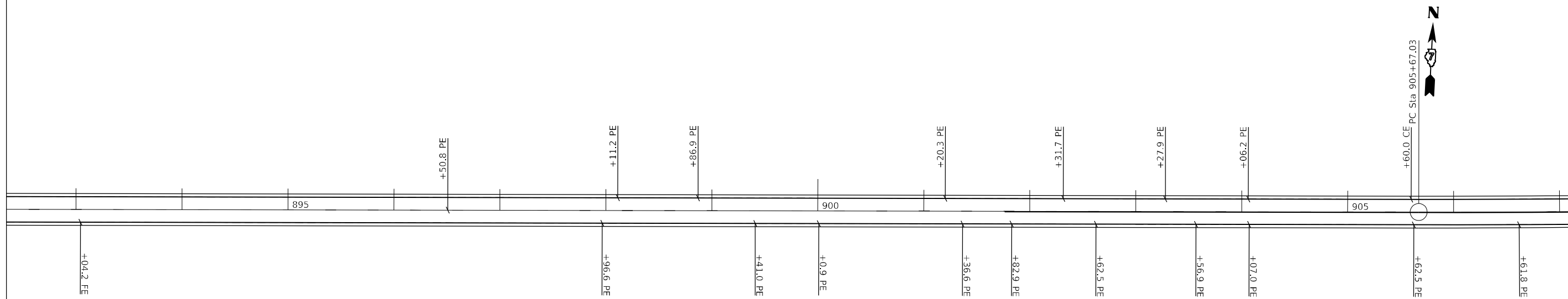
MODEL: Default
 FILE: \\blmfc-pw-beadley.com\P\INDOT\Documents\DOT_Offices\Director_T\Projects\74B53\CADD\DATA\CAD\Sheet5\74B53-she5.dgn

MATCHLINE STATION 877 + 59.0



MATCHLINE STATION 892 + 34.0

MATCHLINE STATION 892 + 34.0



MATCHLINE STATION 907 + 09.0

EXIST. CURVE PS12
 PI STA. = 907+23.24
 $\Delta = 1^\circ 19' 18''$ (LT)
 $D = 0^\circ 25' 23''$
 $R = 13,541.72'$
 $T = 156.21'$
 $L = 312.40'$
 $E = 0.90'$
 $e =$
 $T.R. =$
 $S.E. RUN =$
 $P.C. STA. = 905+67.03$
 $P.T. STA. = 908+79.43$

USER NAME = jessica.wille	DESIGNED - LMH	REVISED -
DRAWN - LMH	CHECKED -	REVISED -
PLOT SCALE = 100,0000 ' / in.	DATE - 3/21/2024	REVISED -
PLOT DATE = 3/21/2024		

STATE OF ILLINOIS
 DEPARTMENT OF TRANSPORTATION

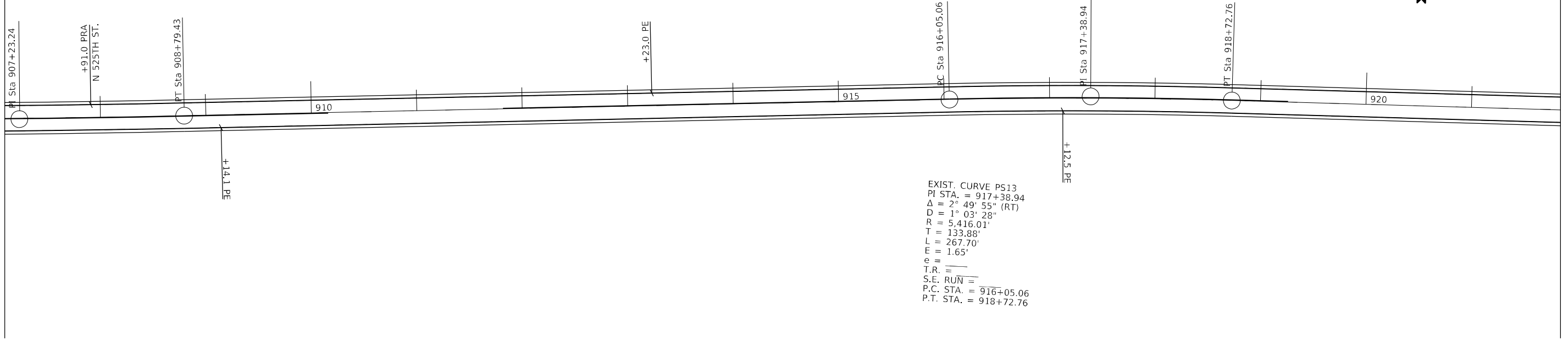
PLAN SHEETS

SCALE: 100,0000 ' / in SHEET 5 OF 13 SHEETS STA. TO STA.

F.A.P. RTE.	SECTION	COUNTY	TOTAL SHEETS	SHEET NO.
781	1RS-4	CRAWFORD	25	12
			CONTRACT NO. 74B53	
ILLINOIS FED. AID PROJECT				

MODEL: Default
 FILE: Mainfile.pia\ultra-cw-bead-fwy.com\PIV\DOT\Documents\DOT Office\Director_7\Project\74853\CADD\DATA\CAD\Sheet\74853-she61a.dgn

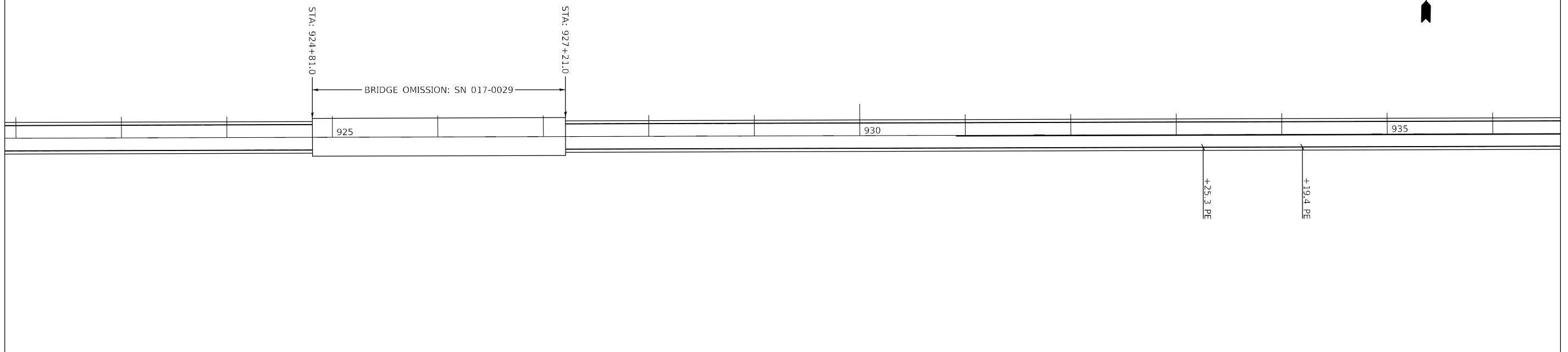
MATCHLINE STATION 907 + 09.0



EXIST. CURVE PS13
 PI STA. = 917+38.94
 $\Delta = 2^\circ 49' 55''$ (RT)
 $D = 1^\circ 03' 28''$
 $R = 5,416.01'$
 $T = 133.88'$
 $L = 267.70'$
 $E = 1.65'$
 $e =$
 $T.R. =$
 $S.E. RUN =$
 $P.C. STA. = 916+05.06$
 $P.T. STA. = 918+72.76$

MATCHLINE STATION 921 + 84.5

MATCHLINE STATION 921 + 84.5



MATCHLINE STATION 936 + 64.0

USER NAME = jessica.hille	DESIGNED - LMH	REVISED -
	DRAWN - LMH	REVISED -
PLOT SCALE = 100,0000 ' / in.	CHECKED -	REVISED -
PLOT DATE = 3/21/2024	DATE - 3/21/2024	REVISED -

**STATE OF ILLINOIS
 DEPARTMENT OF TRANSPORTATION**

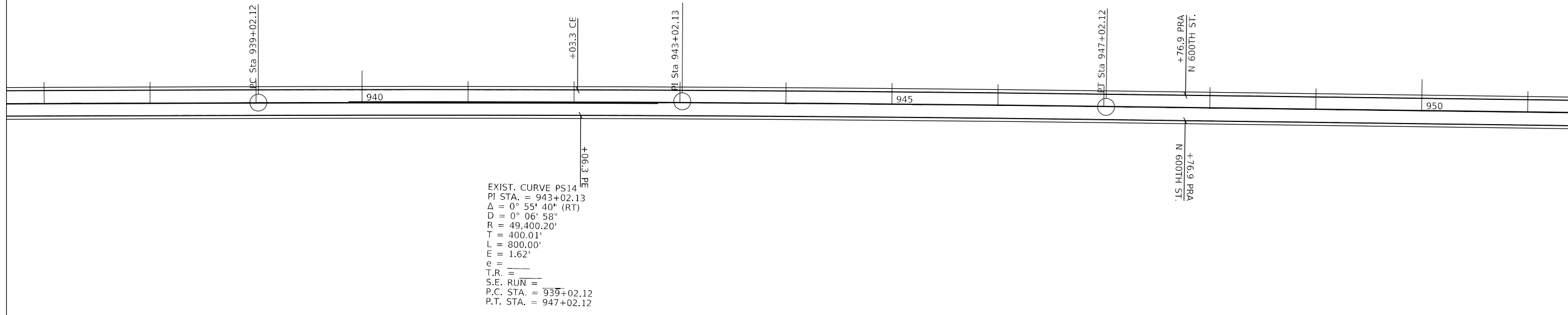
PLAN SHEETS

SCALE: 100,0000 ' / in SHEET 6 OF 13 SHEETS STA. TO STA.

F.A.P. RTE.	SECTION	COUNTY	TOTAL SHEETS	SHEET NO.
781	1RS-4	CRAWFORD	25	13
			CONTRACT NO. 74853	
ILLINOIS FED. AID PROJECT				

MODEL: Default
 FILE NAME: p:\ultra-cw-bead\paw.com\PI\DOT\Documents\DOT Office\Director_7\Project\74B53\CADD\DATA\CAD\Sheet\74B53-she7.dgn

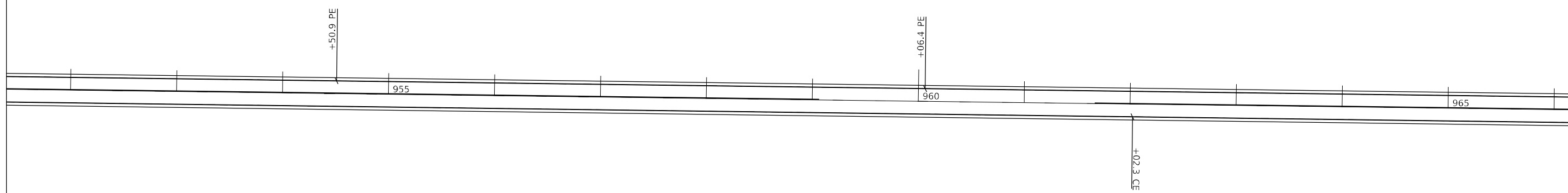
MATCHLINE STATION 936 + 64.0



EXIST. CURVE PS14
 PI STA. = 943+02.13
 $\Delta = 0^\circ 55' 40''$ (RT)
 $D = 0^\circ 06' 58''$
 $R = 49,400.20'$
 $T = 400.01'$
 $L = 800.00'$
 $E = 1.62'$
 $e =$
 $T.R. =$
 $S.E. RUN =$
 P.C. STA. = 939+02.12
 P.T. STA. = 947+02.12

MATCHLINE STATION 951 + 39.5

MATCHLINE STATION 951 + 39.5



MATCHLINE STATION 956 + 14.5

STATE OF ILLINOIS
 DEPARTMENT OF TRANSPORTATION

PLAN SHEETS

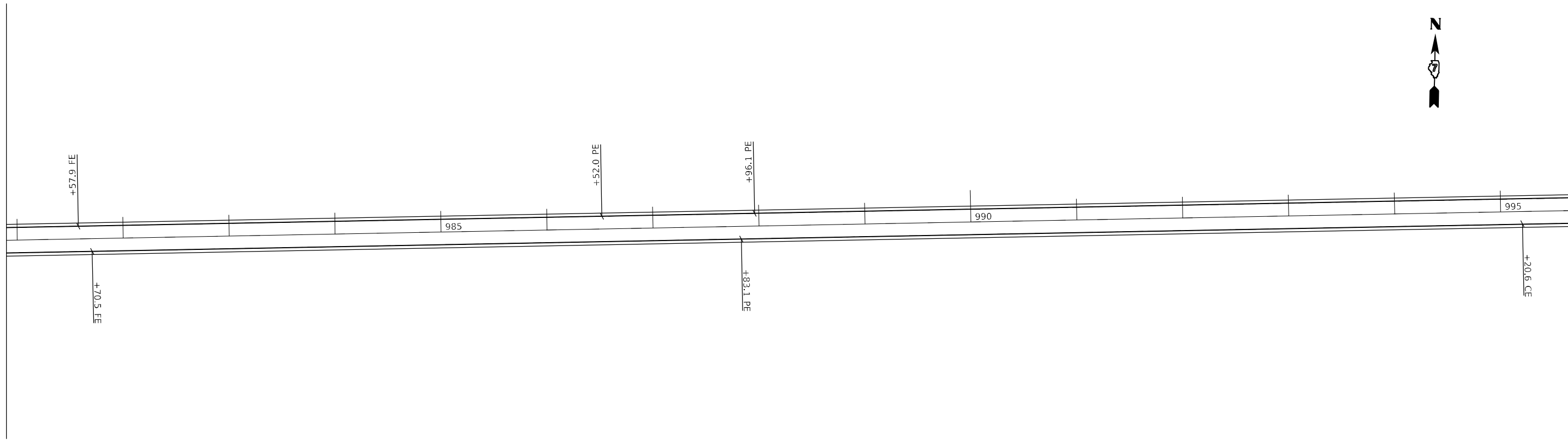
USER NAME = jessica.hille	DESIGNED - LMH	REVISED -
	DRAWN - LMH	REVISED -
PLOT SCALE = 100,0000' / in.	CHECKED -	REVISED -
PLOT DATE = 3/21/2024	DATE - 3/21/2024	REVISED -

SCALE: 100,0000' / in SHEET 7 OF 13 SHEETS STA. TO STA.

F.A.P. RTE.	SECTION	COUNTY	TOTAL SHEETS	SHEET NO.
781	1RS-4	CRAWFORD	25	14
CONTRACT NO. 74B53			ILLINOIS FED. AID PROJECT	

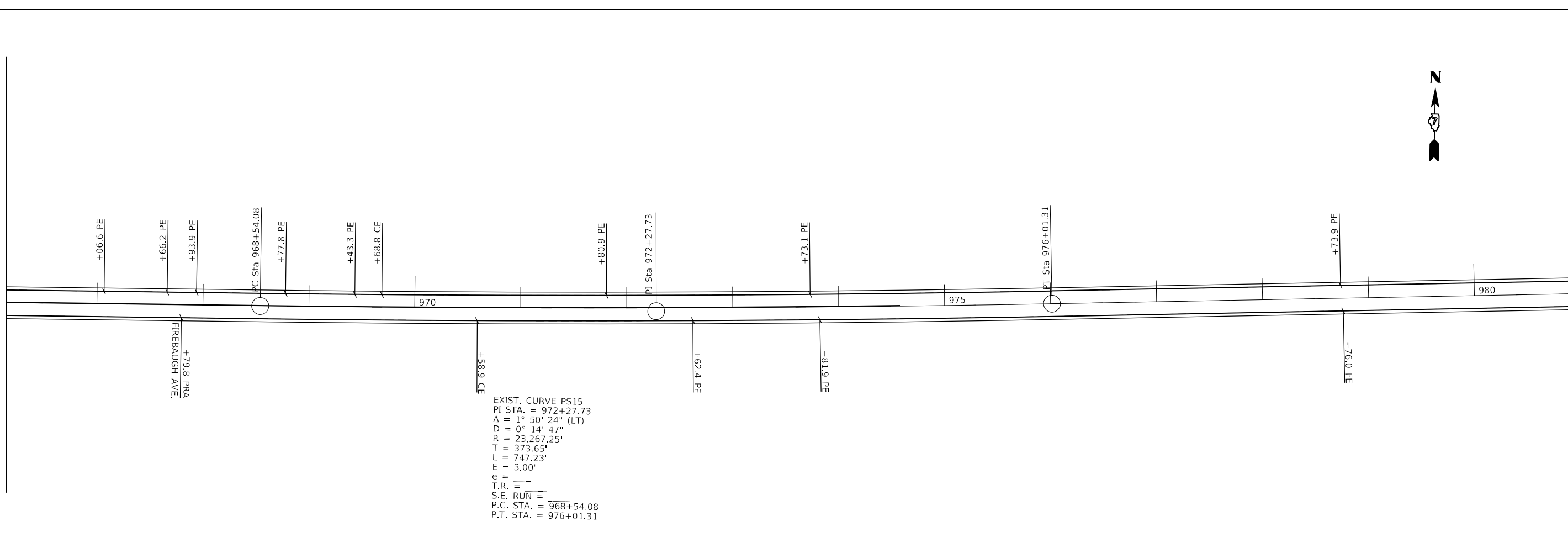
MODEL: Default
 FILE NAME: p:\project-aw-bead\paw.com\PI\DOT\Documents\DOT Office\Director_7\Project\74853\CADD\DATA\CAD\Sheet\74853-she8.dwg

MATCHLINE STATION 980 + 89.5



MATCHLINE STATION 995 + 65.0

MATCHLINE STATION 956 + 14.5



MATCHLINE STATION 980 + 89.5

EXIST. CURVE PS15
 P.I. STA. = 972+27.73
 $\Delta = 1^\circ 50' 24''$ (LT)
 D = $0^\circ 14' 47''$
 R = 23,267.25'
 T = 373.65'
 L = 747.23'
 E = 3.00'
 e = -
 T.R. = -
 S.E. RUN = -
 P.C. STA. = 968+54.08
 P.T. STA. = 976+01.31

USER NAME = jessica.hille	DESIGNED - LMH	REVISED -
	DRAWN - LMH	REVISED -
PLOT SCALE = 100,0000' / in.	CHECKED -	REVISED -
PLOT DATE = 3/21/2024	DATE - 3/21/2024	REVISED -

STATE OF ILLINOIS
 DEPARTMENT OF TRANSPORTATION

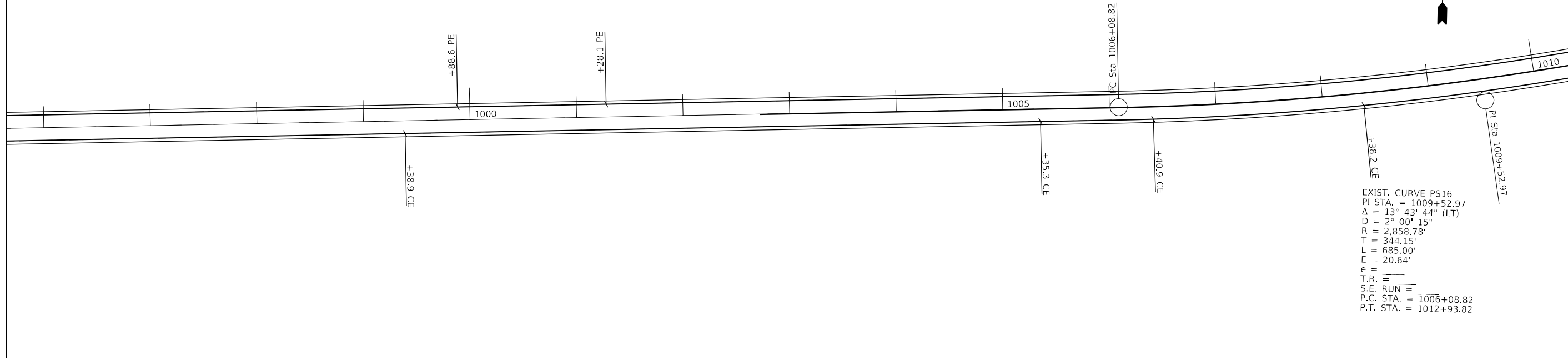
PLAN SHEETS

SCALE: 100,0000' / in SHEET 8 OF 13 SHEETS STA. TO STA.

F.A.P. RTE.	SECTION	COUNTY	TOTAL SHEETS	SHEET NO.
781	1RS-4	CRAWFORD	25	15
CONTRACT NO. 74853			ILLINOIS FED. AID PROJECT	

MODEL: Default
 FILE: Mainfile.pia\ultra-cw-bead-fwy.com\PI\INDOT\Documents\DOT Office\Director_7\Projects\74853\CADD\DATA\CAD\Sheet\74853-shd-plan.dgn

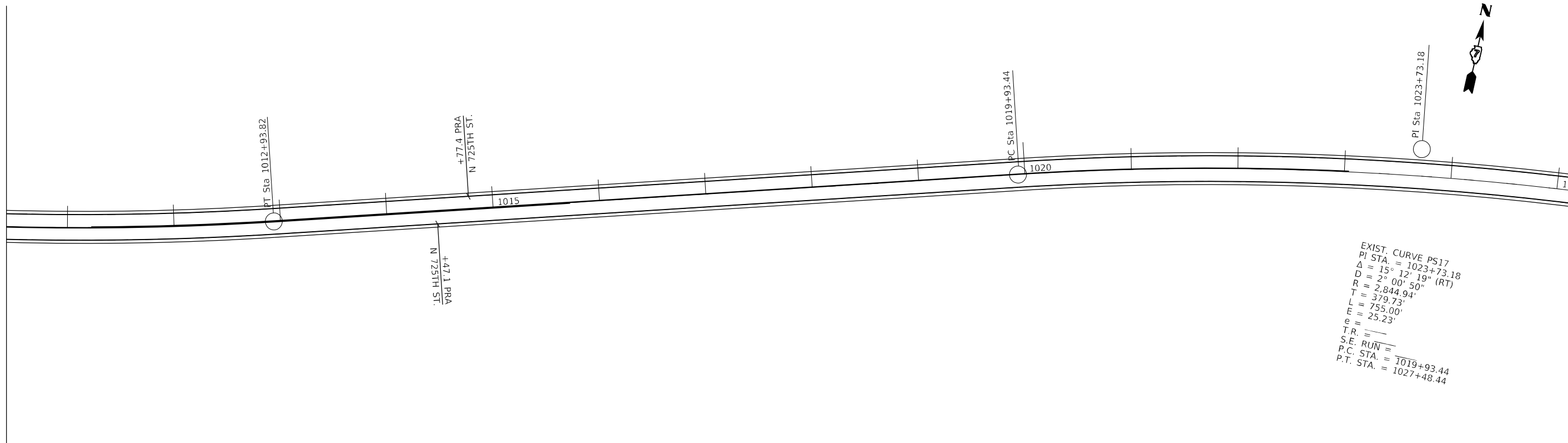
MATCHLINE STATION 995 + 65.0



EXIST. CURVE PS16
 PI STA. = 1009+52.97
 $\Delta = 13^\circ 43' 44''$ (LT)
 $D = 2^\circ 00' 15''$
 $R = 2,858.78'$
 $T = 344.15'$
 $L = 685.00'$
 $E = 20.64'$
 $e =$
 T.R. =
 S.E. RUN =
 P.C. STA. = 1006+08.82
 P.T. STA. = 1012+93.82

MATCHLINE STATION 1010 + 42.5

MATCHLINE STATION 1010 + 42.5



EXIST. CURVE PS17
 PI STA. = 1023+73.18
 $\Delta = 15^\circ 12' 19''$ (RT)
 $D = 2^\circ 00' 50''$
 $R = 2,844.94'$
 $T = 379.73'$
 $L = 755.00'$
 $E = 25.23'$
 $e =$
 T.R. =
 S.E. RUN =
 P.C. STA. = 1019+93.44
 P.T. STA. = 1027+48.44

MATCHLINE STATION 1025 + 20.0

STATE OF ILLINOIS
 DEPARTMENT OF TRANSPORTATION

PLAN SHEETS

SCALE: 100,0000' / 1" SHEET 9 OF 13 SHEETS STA. TO STA.

USER NAME = jessica.hille	DESIGNED - LMH	REVISED -
DRAWN - LMH	REVISIONS -	
PLOT SCALE = 100,0000' / 1"	CHECKED -	REVISED -
PLOT DATE = 3/21/2024	DATE - 3/21/2024	REVISED -

F.A.P. RTE.	SECTION	COUNTY	TOTAL SHEETS	SHEET NO.
781	1RS-4	CRAWFORD	25	16
CONTRACT NO. 74853				
ILLINOIS FED. AID PROJECT				

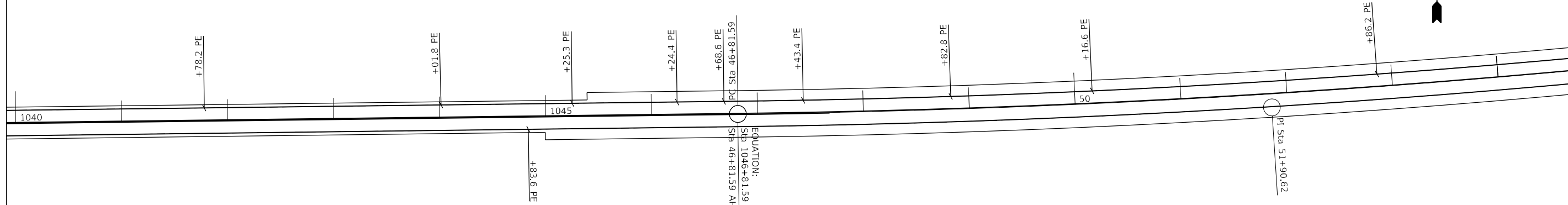
MODEL: Default
 FILE: \\mllc-pw-bentley.com\P\DOT\Documents\DOT Office\Director_7\Project\74853\CADD\DATA\CAD\FILES\74853-she14a.dgn

MATCHLINE STATION 1025 + 20.0



MATCHLINE STATION 1039 + 91.0

MATCHLINE STATION 1039 + 91.0



MATCHLINE STATION 54 + 67.5

EQUATION:
 Sta 1046+81.59 BK =
 Sta 46+81.59 AH

EXIST. CURVE PS18
 PI STA. = 51+90.62
 Δ = 5° 44' 12" (LT)
 D = 0° 34' 11"
 R = 10,059.03'
 T = 503.99'
 L = 1,007.13'
 E = 12.62'
 e = _____
 T.R. = _____
 S.E. RUN = _____
 P.C. STA. = 46+86.63
 P.T. STA. = 56+93.76

USER NAME = jessica.wille	DESIGNED - LMH	REVISED -
	DRAWN - LMH	REVISED -
PLOT SCALE = 100,0000 ' / in.	CHECKED -	REVISED -
PLOT DATE = 3/21/2024	DATE - 3/21/2024	REVISED -

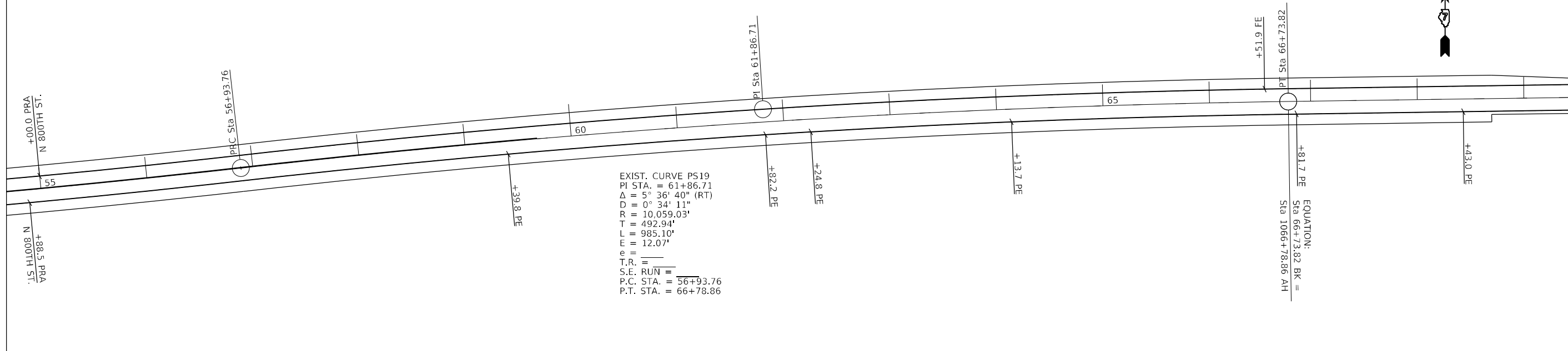
STATE OF ILLINOIS
 DEPARTMENT OF TRANSPORTATION

SCALE: 100,0000 ' / in		SHEET 10 OF 13 SHEETS		STA.	TO STA.
------------------------	--	-----------------------	--	------	---------

F.A.P. RTE.	SECTION	COUNTY	TOTAL SHEETS	SHEET NO.
781	1RS-4	CRAWFORD	25	17
CONTRACT NO. 74853				
ILLINOIS FED. AID PROJECT				

MODEL: Default
 FILE NAME: p:\i\sect-cw-bead-rwy.com\PI\INDOT\Documents\INDOT_Offices\Director_7\Project\74B53\CADD\data\CAD\Sheet\74B53-shect11.dgn

MATCHLINE STATION 54 + 67.5

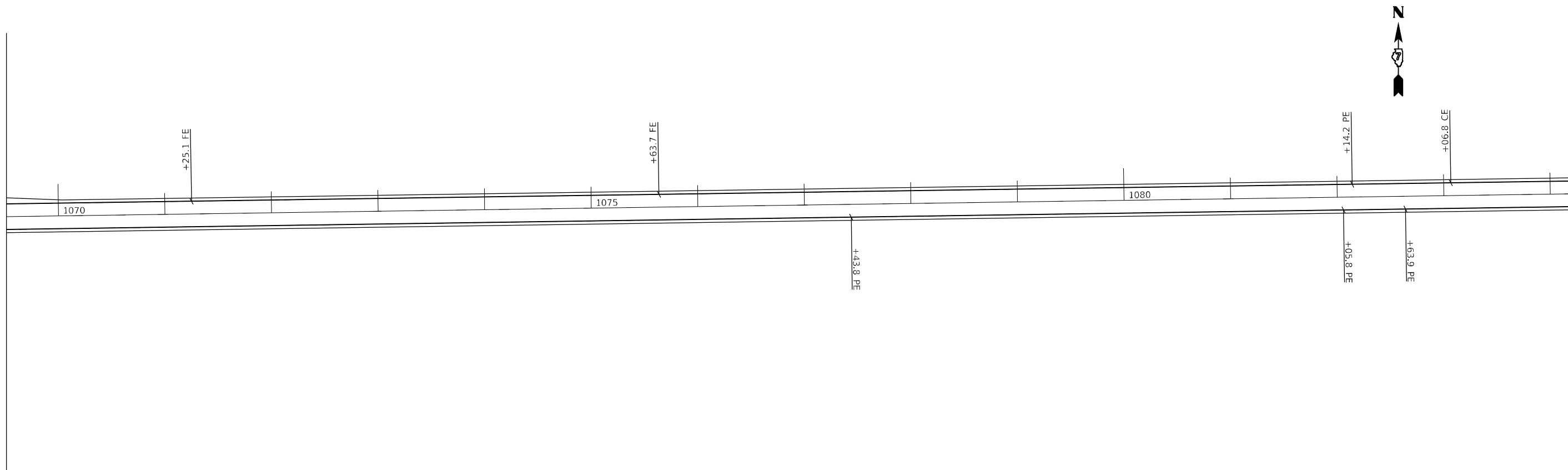


EXIST. CURVE PS19
 P.I. STA. = 61+86.71
 $\Delta = 5^\circ 36' 40''$ (RT)
 $D = 0^\circ 34' 11''$
 $R = 10,059.03'$
 $T = 492.94'$
 $L = 985.10'$
 $E = 12.07'$
 $\theta =$
 $T.R. =$
 S.E. RUN =
 P.C. STA. = 56+93.76
 P.T. STA. = 66+78.86

EQUATION:
 Sta 66+73.82 BK =
 Sta 1066+78.86 AH

MATCHLINE STATION 1069 + 51.0

MATCHLINE STATION 1069 + 51.0



MATCHLINE STATION 1084 + 26.0

USER NAME = jessica.hille	DESIGNED - LMH	REVISED -
DRAWN - LMH	REVISIONS	REVISED -
PLOT SCALE = 100,0000 ' / in.	CHECKED -	REVISED -
PLOT DATE = 3/21/2024	DATE - 3/21/2024	REVISED -

STATE OF ILLINOIS
 DEPARTMENT OF TRANSPORTATION

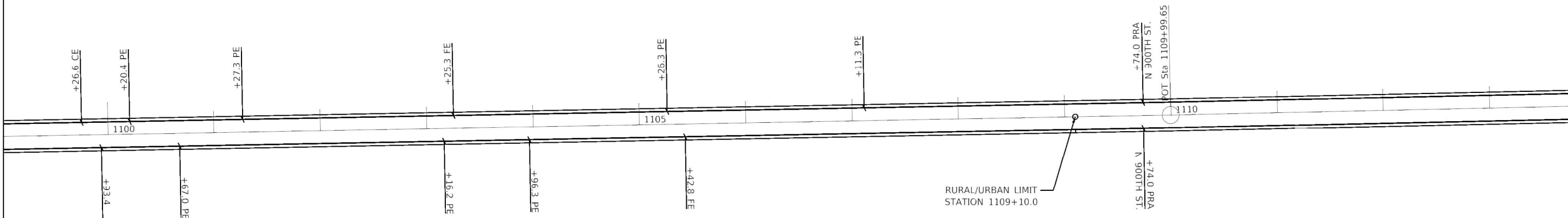
PLAN SHEETS

SCALE: 100,0000 ' / in SHEET 11 OF 13 SHEETS STA. TO STA.

F.A.P. RTE.	SECTION	COUNTY	TOTAL SHEETS	SHEET NO.
781	IRS-4	CRAWFORD	25	18
CONTRACT NO. 74B53			ILLINOIS FED. AID PROJECT	

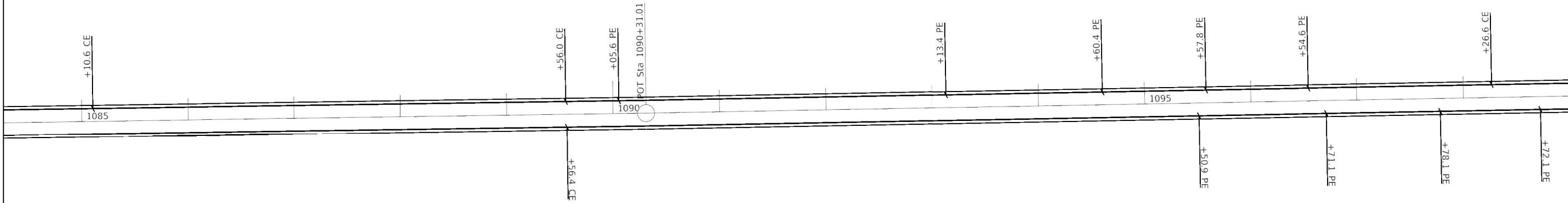
Model: Default
 File: \\mtrc-pw.bentley.com/PWIDOT/Drawings/IDOT/Office/Drawings/Projects/74B53/CADD/13/CADD/Sheet/74B53_12.dwg, pldm.cgp

MATCHLINE STATION 1099 + 01.5



MATCHLINE STATION 1113 + 76.5

MATCHLINE STATION 1084 + 26.0



MATCHLINE STATION 1099 + 01.5

USER NAME = Default	DESIGNED - LMH	REVISED -
DRAWN - LMH	REVISOR -	
PLOT SCALE = 100.0000' / in.	CHECKED -	REVISOR -
PLOT DATE = 4/24/2024	DATE - 4/24/2024	REVISOR -

**STATE OF ILLINOIS
 DEPARTMENT OF TRANSPORTATION**

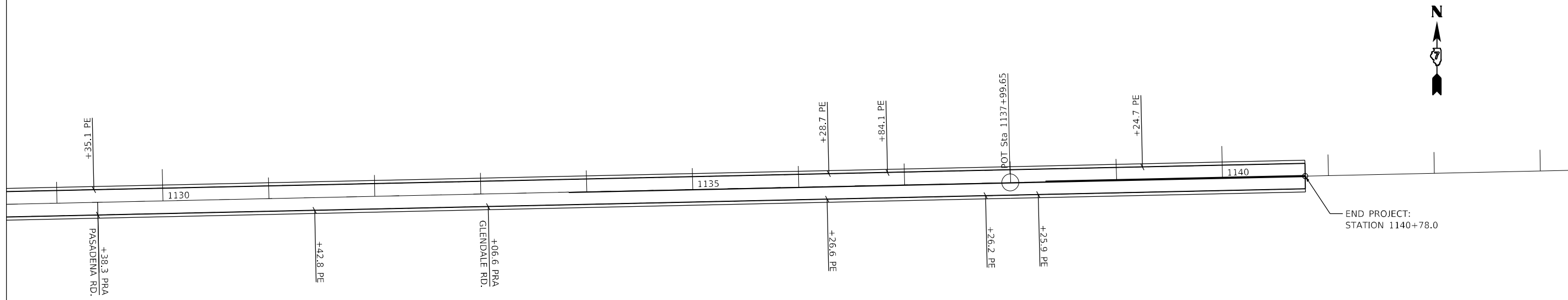
PLAN SHEETS

SCALE: 100.0000' / in SHEET 12 OF 13 SHEETS STA. TO STA.

F.A.P. RTE.	SECTION	COUNTY	TOTAL SHEETS	SHEET NO.
781	1R5-4	CRAWFORD	25	19
CONTRACT NO. 74B53				
ILLINOIS FED. AID PROJECT				

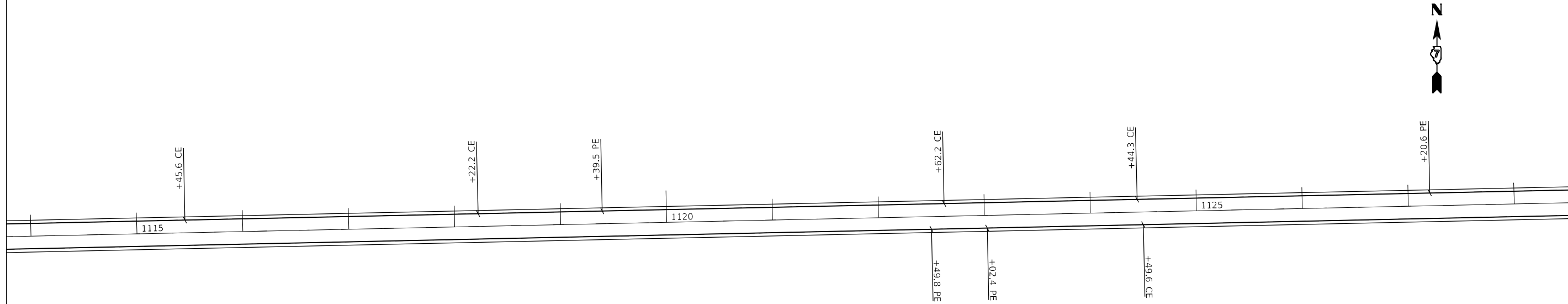
MODEL: Default
 FILE NAME: p:\i\dot\paw\benefy.com\PI\DOT\Documents\DOT Office\Director_7\Project\74B53\CADD\DATA\CADD\FILES\DOT\74B53-sheets.dgn

MATCHLINE STATION 1128 + 52.0



END PROJECT:
 STATION 1140+78.0

MATCHLINE STATION 1113 + 76.5



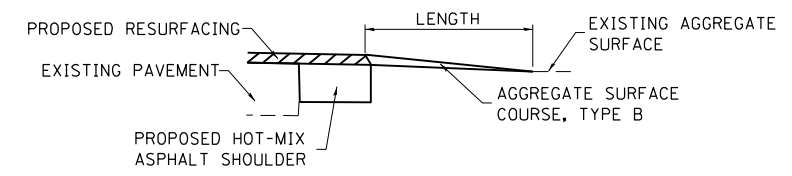
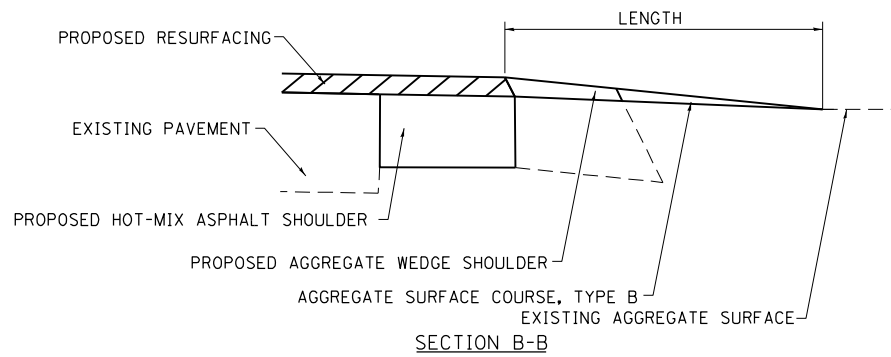
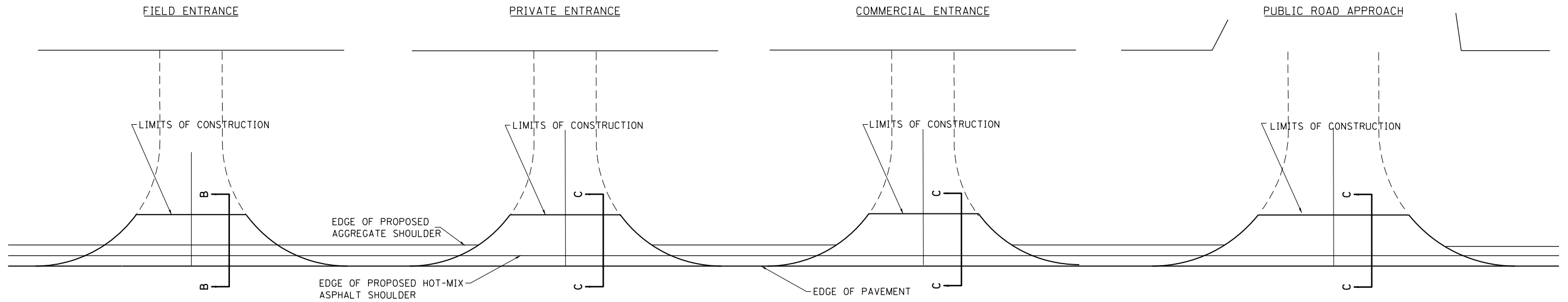
MATCHLINE STATION 1128 + 52.0

USER NAME = jessica.hille	DESIGNED - LMH	REVISED -
	DRAWN - LMH	REVISED -
PLOT SCALE = 100,0000 ' / in.	CHECKED -	REVISED -
PLOT DATE = 3/21/2024	DATE - 3/21/2024	REVISED -

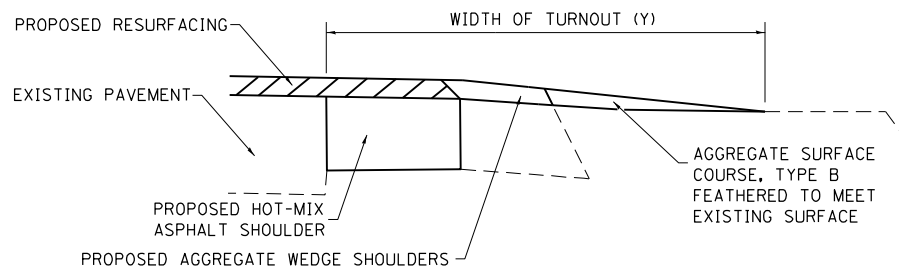
**STATE OF ILLINOIS
 DEPARTMENT OF TRANSPORTATION**

PLAN SHEETS	
SCALE: 100,0000 ' / in.	SHEET 13 OF 13 SHEETS
STA.	TO STA.

F.A.P. RTE.	SECTION	COUNTY	TOTAL SHEETS	SHEET NO.
781	1RS-4	CRAWFORD	25	20
CONTRACT NO. 74B53				
ILLINOIS FED. AID PROJECT				

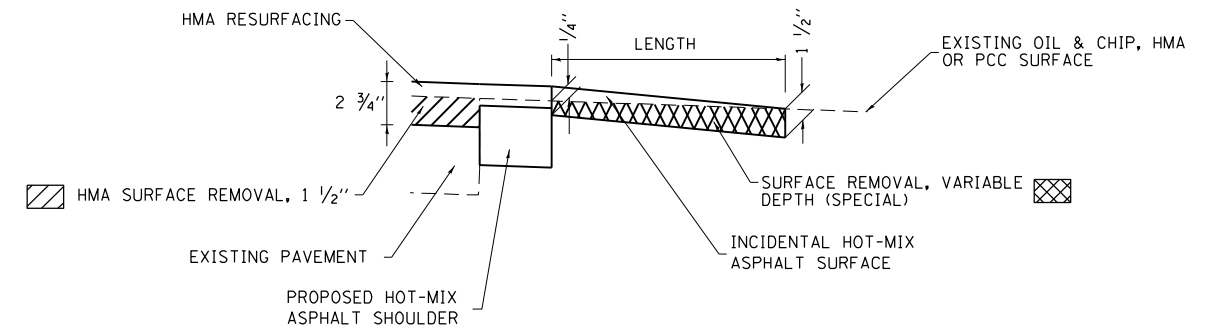


SECTION C-C



TYPICAL SECTION AT MAILBOX TURNOUT

NOTE: SEE STANDARD 406201 FOR MAILBOX TURNOUT DETAILS



SECTION C-C

NOTES

LENGTH = 10' UNLESS OTHERWISE NOTED ON PLANS

THE THICKNESS OF THE HOT-MIX ASPHALT SHOULDERS THROUGH AGGREGATE COMMERCIAL ENTRANCES AND PUBLIC ROADS SHALL BE 10". THE COST OF THE EXTRA THICKNESS SHALL BE INCLUDED WITH THE HOT-MIX ASPHALT SHOULDERS PAY ITEM.

MODEL: Default
 FILE: Mailbox - Mailbox.dwg
 PROJECT: 174853 - C:\Data\174853\174853\174853.dwg
 PLOT DATE: 3/21/2024

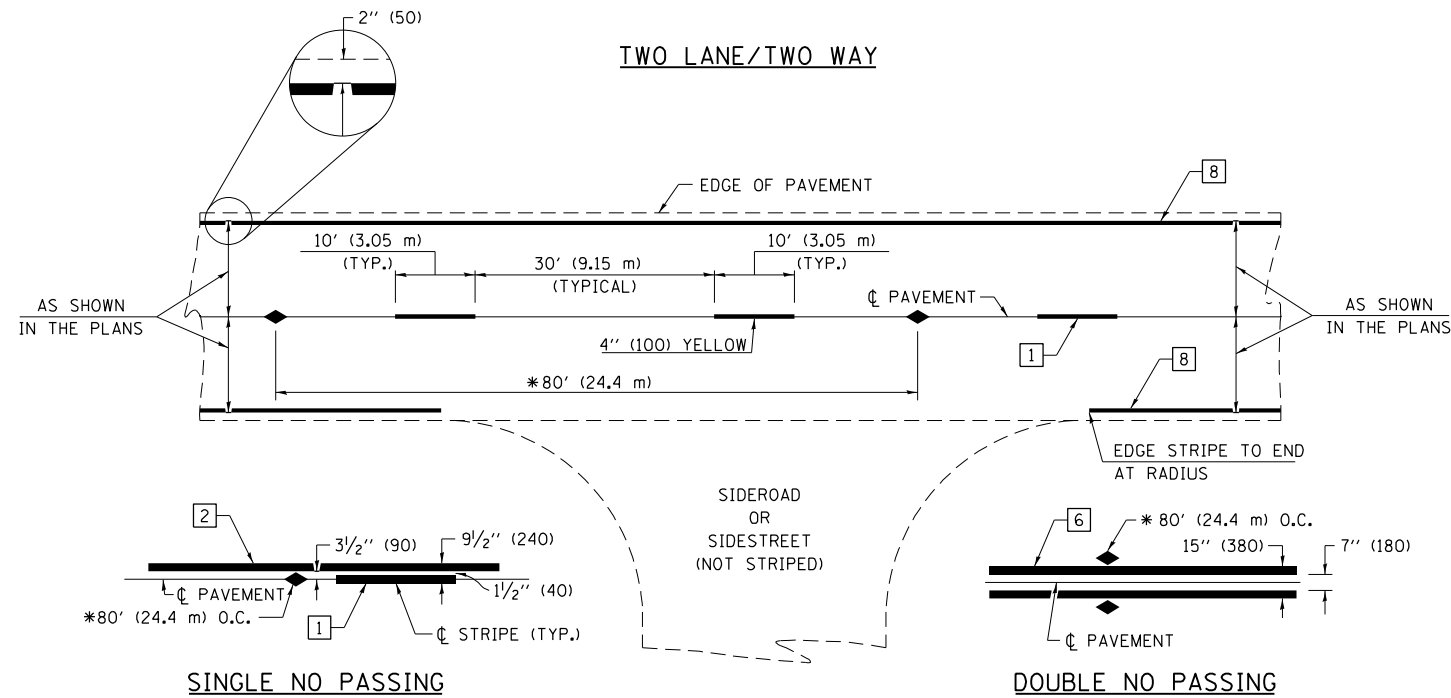
USER NAME = jessica.hille	DESIGNED -	REVISED -
PLOT SCALE = 100,0000' / in.	DRAWN -	REVISED -
PLOT DATE = 3/21/2024	CHECKED -	REVISED -
	DATE = 3/21/2024	REVISED -

**STATE OF ILLINOIS
DEPARTMENT OF TRANSPORTATION**

**RURAL ENTRANCE AND MAILBOX TURNOUT DETAILS
SHOULDER (PROPOSED)**

SCALE: NO SCALE SHEET 1 OF 1 SHEETS STA. TO STA.

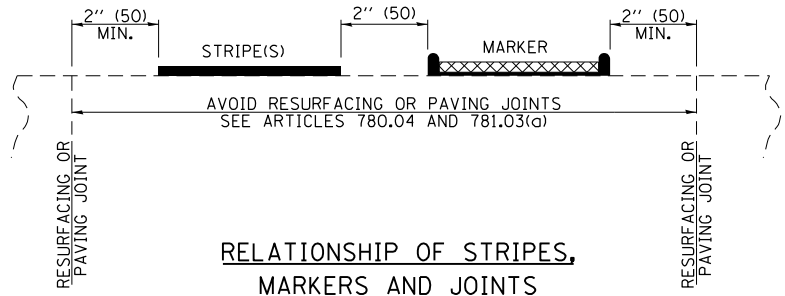
F.A.P. RTE.	SECTION	COUNTY	TOTAL SHEETS	SHEET NO.
781	1RS-4	CRAWFORD	25	21
CONTRACT NO. 74853				
ILLINOIS FED. AID PROJECT				



* REDUCE TO 40' (12.2 m) O.C. ON CURVES WITH POSTED OR ADVISORY SPEEDS OF 45 mph (70 km/h) OR LESS.

PAVEMENT MARKING LEGEND

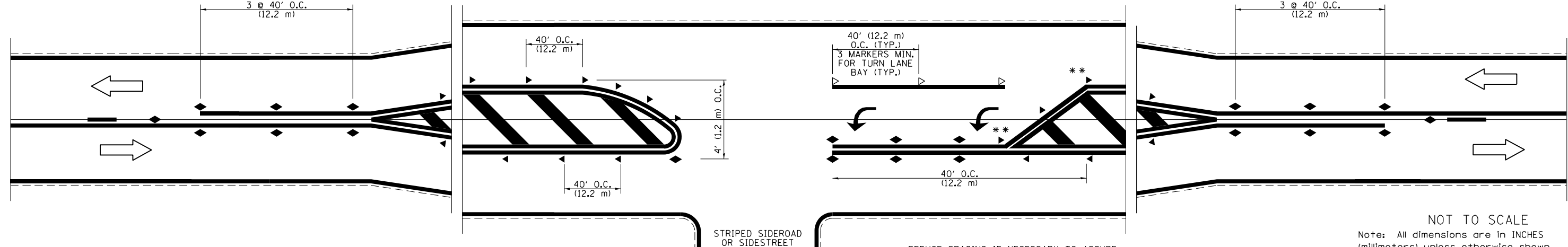
- 1 4" (100) SKIP-DASH (YELLOW)
- 2 4" (100) SOLID (YELLOW)
- 3 12" (300) DIAGONAL (YELLOW)
- 4 4" (100) DOUBLE YELLOW (NARROW)
- 5 12" (300) SOLID WHITE
- 6 4" (100) DOUBLE YELLOW (WIDE)
- 7 6" (150) SKIP-DASH (WHITE)
- 8 4" (100) SOLID (WHITE)
- 9 12" (300) DIAGONAL (WHITE)
- 10 6" (150) SOLID (WHITE)
- 11 24" (600) STOP BAR (WHITE)
- 12 8" (200) SOLID (WHITE)
- 13 4" (100) PARKING WHITE



TYPICAL PAVEMENT MARKERS LEGEND

- ◆ TWO-WAY AMBER MARKER
- ▶ ONE-WAY AMBER MARKER
- ▷ ONE-WAY CRYSTAL MARKER

RAISED REFLECTIVE PAVEMENT MARKERS



NOT TO SCALE
Note: All dimensions are in INCHES (millimeters) unless otherwise shown.

DISTRICT 7 DETAIL NO. 7800001

MODEL: Default
FILE: \\naillc:\pub\std-cw-benefits\com\PI\DOT\Documents\DOT Office\Director_7\Project\74853\CADD\DATA\CAD\Sheet\74853-sh-detailed.dgn

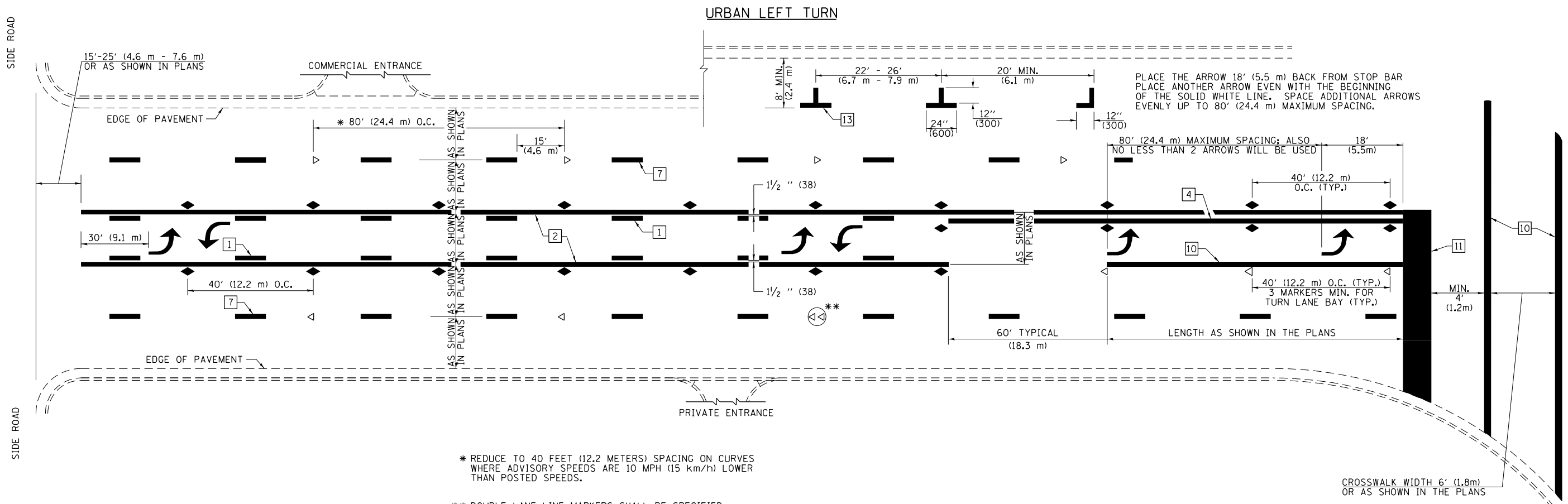
USER NAME = jessica.hille	DESIGNED -	REVISED - NAS 06/22
PLOT SCALE = 100,0000' / in.	DRAWN -	REVISED -
PLOT DATE = 3/21/2024	CHECKED -	REVISED -
	DATE - 3/21/2024	REVISED -

**STATE OF ILLINOIS
DEPARTMENT OF TRANSPORTATION**

**PAVEMENT MARKING AND RAISED REFLECTIVE PAVEMENT MARKERS
(RURAL & URBAN APPLICATIONS)**

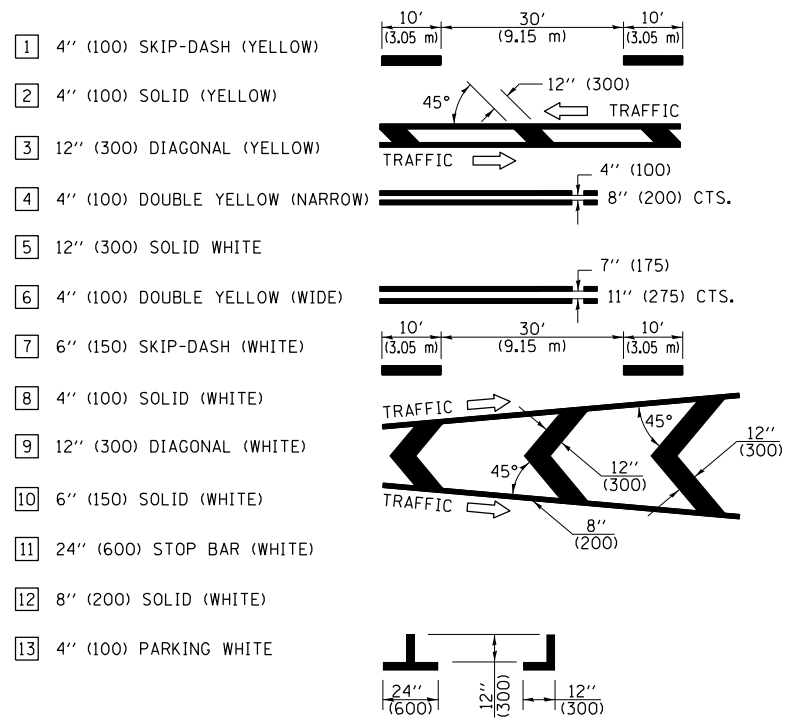
SCALE: NO SCALE SHEET 1 OF 4 SHEETS STA. TO STA.

F.A.P. RTE.	SECTION	COUNTY	TOTAL SHEETS	SHEET NO.
781	1RS-4	CRAWFORD	25	22
CONTRACT NO. 74853				
ILLINOIS FED. AID PROJECT				



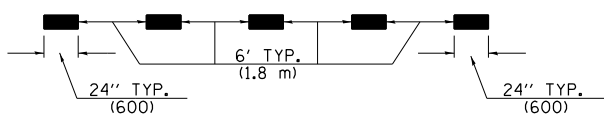
- * REDUCE TO 40 FEET (12.2 METERS) SPACING ON CURVES WHERE ADVISORY SPEEDS ARE 10 MPH (15 km/h) LOWER THAN POSTED SPEEDS.
- ** DOUBLE LANE LINE MARKERS SHALL BE SPECIFIED AND SPACED AS SHOWN IN HIGHWAY STANDARD 781001 FOR MULTI-LANE DIVIDED AND UNDIVIDED HIGHWAYS.

PAVEMENT MARKING LEGEND

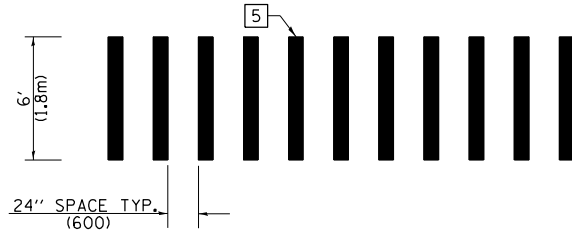


GENERAL NOTES

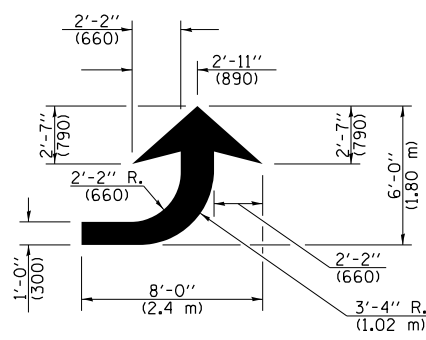
1. TURN ARROW PAIRS SHALL BE PLACED AT 250' (75 m) INTERVALS AND SHALL BE EVENLY SPACED BETWEEN BOTH ENDS OF THE BIDIRECTIONAL LEFT TURN LANE. USE A MINIMUM OF TWO PAIRS PER BLOCK.
2. THE SOLID YELLOW PAVEMENT MARKINGS [2] SHOULD GENERALLY START OR END NEAR THE RADIUS POINT OF EACH STREET RETURN EXCEPT WHERE ONE OR BOTH ENDS WOULD INCLUDE STOP BARS.
3. THE SKIP-DASH PAVEMENT MARKINGS [1] OR [7] SHOULD BE CENTERED BETWEEN BOTH ENDS OF EACH CITY BLOCK AND SHALL BE PLACED SO THEY LINE UP ACROSS FROM EACH OTHER.
4. USE LARGE ARROW SIZE FOR BOTH RURAL AND URBAN LOCATIONS. (SEE SECTION 780 FOR SYMBOLS TABLE)
5. LANE LINE EXTENSIONS SHALL BE THE SAME COLOR AND WIDTH AS THE LANE LINE BEING EXTENDED.
6. ALL WHITE SKIP-DASH LINES SHALL BE 6" IN WIDTH.



LANE LINE EXTENSIONS

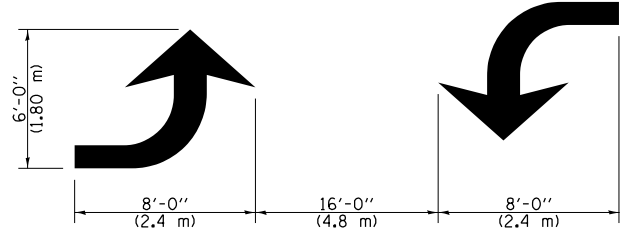


CROSSWALK DETAIL (DECATUR CITY LIMITS ONLY)



LEFT ARROW

REVERSE FOR RIGHT ARROW
AREA = 15.6 SQ. FT. (1.47 m²)
(WHITE)



TYPICAL DOUBLE TURN ARROWS (WHITE)

NOT TO SCALE

Note: All dimensions are in INCHES (millimeters) unless otherwise shown.

DISTRICT 7 DETAIL NO. 7800001

USER NAME = jessica.wille	DESIGNED -	REVISED - NAS 06/22
PLOT SCALE = 100,0000' / in.	DRAWN -	REVISED -
PLOT DATE = 3/21/2024	CHECKED -	REVISED -
	DATE - 3/21/2024	REVISED -

**STATE OF ILLINOIS
DEPARTMENT OF TRANSPORTATION**

**PAVEMENT MARKING AND RAISED REFLECTIVE PAVEMENT MARKERS
(RURAL & URBAN APPLICATIONS)**

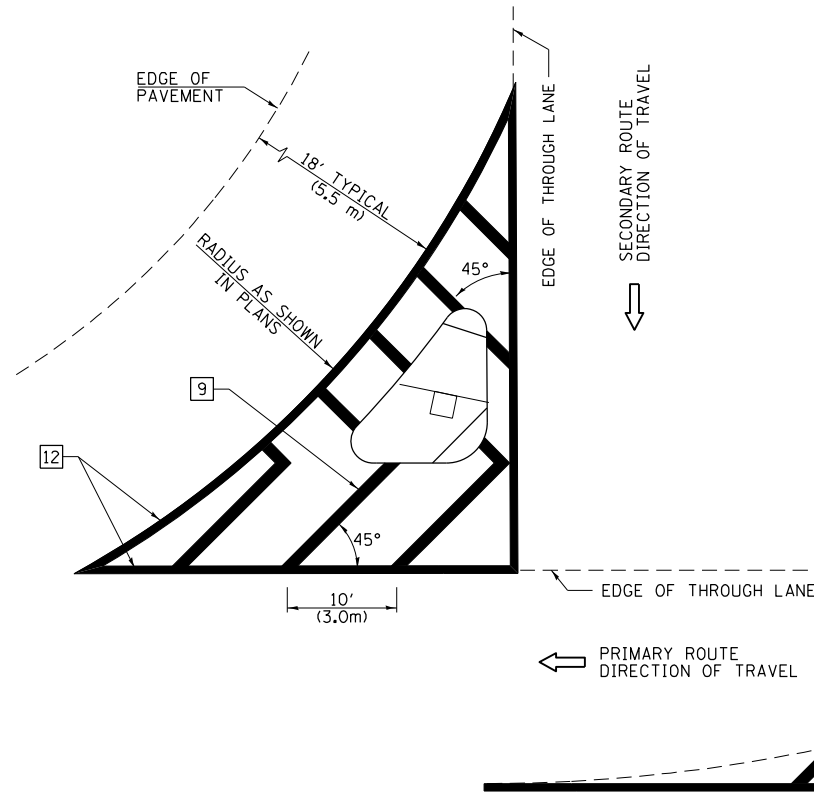
SCALE: NO SCALE SHEET 2 OF 4 SHEETS STA. TO STA.

F.A.P. RTE.	SECTION	COUNTY	TOTAL SHEETS	SHEET NO.
781	1RS-4	CRAWFORD	25	23
CONTRACT NO. 74B53				
ILLINOIS FED. AID PROJECT				

MODEL: Default FILE: 74B53_PavementMarkingAndReflectiveMarkers.dwg PROJECT: 74B53_CADDData\CADDProjects\74B53-Pavement.dwg

ISLANDS

OPTION 1

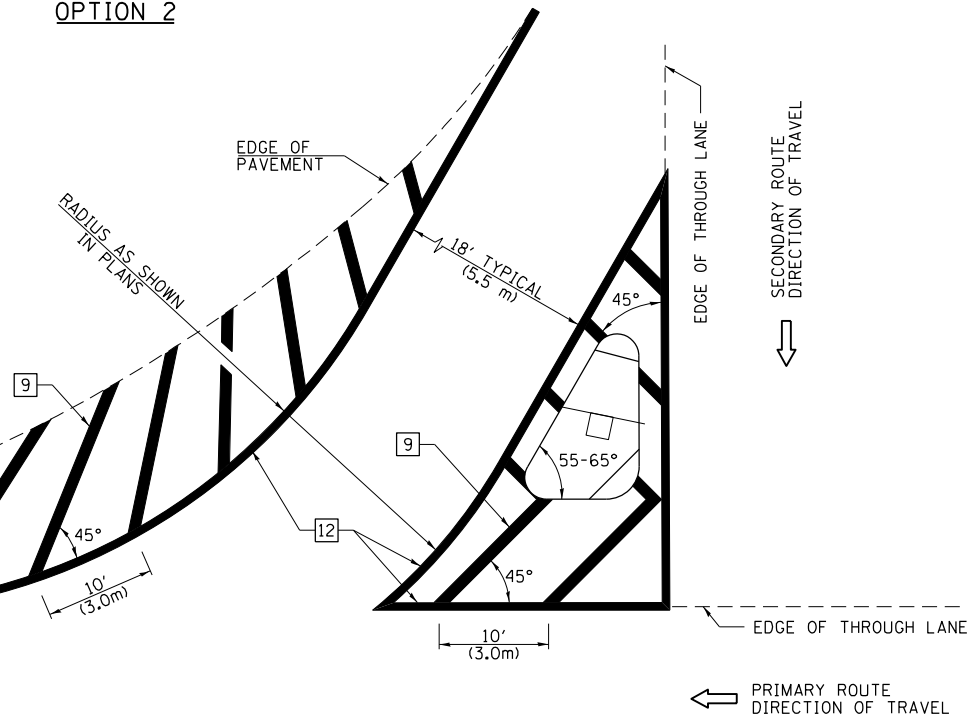


GENERAL NOTES

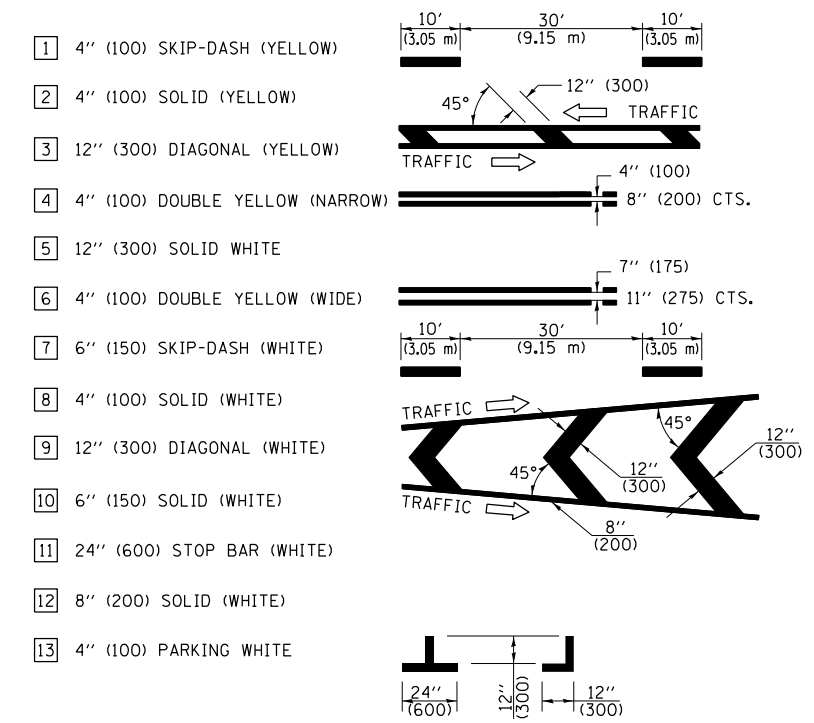
1. RAISED AND CORRUGATED MEDIANS SHALL BE OUTLINED WITH [2].
2. SOME OF THE INFORMATION INCLUDED WITH THIS DETAIL MAY NOT BE APPLICABLE TO THIS IMPROVEMENT.
3. PAVEMENT MARKINGS ARE TO BE EXTENDED THROUGH OMISSIONS WHEN APPLICABLE.
4. FINAL PAVEMENT MARKINGS SHALL BE IN PLACE PRIOR TO PLACING ANY RAISED REFLECTIVE PAVEMENT MARKERS.
5. THE FOLLOWING CRITERIA SHALL BE USED FOR SELECTING THE DIAGONAL PAVEMENT MARKING SPACING:

< 30 MPH (< 50 km/h)	15' (4.5 m)
30-45 MPH (50-75 km/h)	20' (6.0 m)
> 45 MPH (> 75 km/h)	30' (9.0 m)
6. THE USE OF ISLAND STRIPING OPTION 1 OR OPTION 2 SHALL BE AS SHOWN ON THE PLANS.

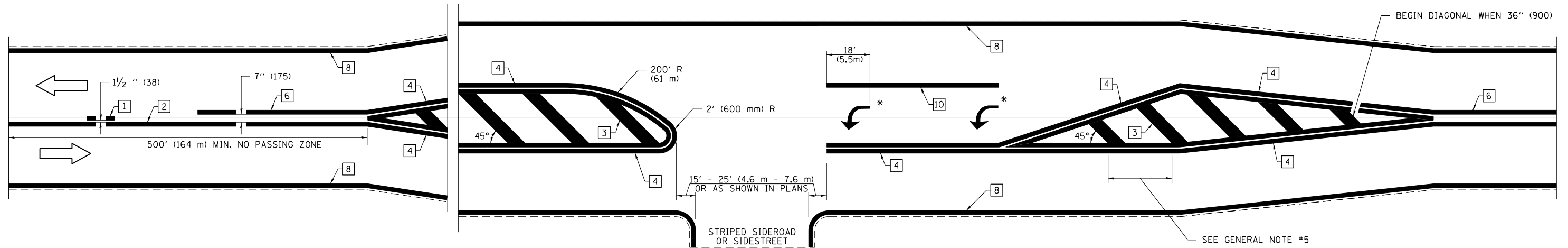
OPTION 2



PAVEMENT MARKING LEGEND



RURAL LEFT TURN STRIPING



* PLACE AN ARROW 18' (5.5 m) BACK FROM END OF THE SOLID WHITE LINE. PLACE ANOTHER ARROW EVEN WITH THE BEGINNING OF THE SOLID WHITE LINE. SPACE ADDITIONAL ARROWS EVENLY UP TO 80' (24.4 m) MAXIMUM SPACING. USE MINIMUM OF 2 ARROWS.

NOT TO SCALE

Note: All dimensions are in INCHES (millimeters) unless otherwise shown.

DISTRICT 7 DETAIL NO. 7800001

USER NAME = jessica.ville	DESIGNED -	REVISOR - NAS	DATE - 06/22
	DRAWN -	REVISOR -	
PLOT SCALE = 100,0000' / in.	CHECKED -	REVISOR -	
PLOT DATE = 3/21/2024	DATE - 3/21/2024	REVISOR -	

**STATE OF ILLINOIS
DEPARTMENT OF TRANSPORTATION**

**PAVEMENT MARKING AND RAISED REFLECTIVE PAVEMENT MARKERS
(RURAL & URBAN APPLICATIONS)**

SCALE: NO SCALE SHEET 3 OF 4 SHEETS STA. TO STA.

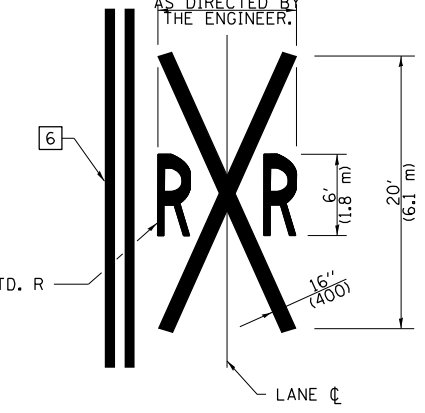
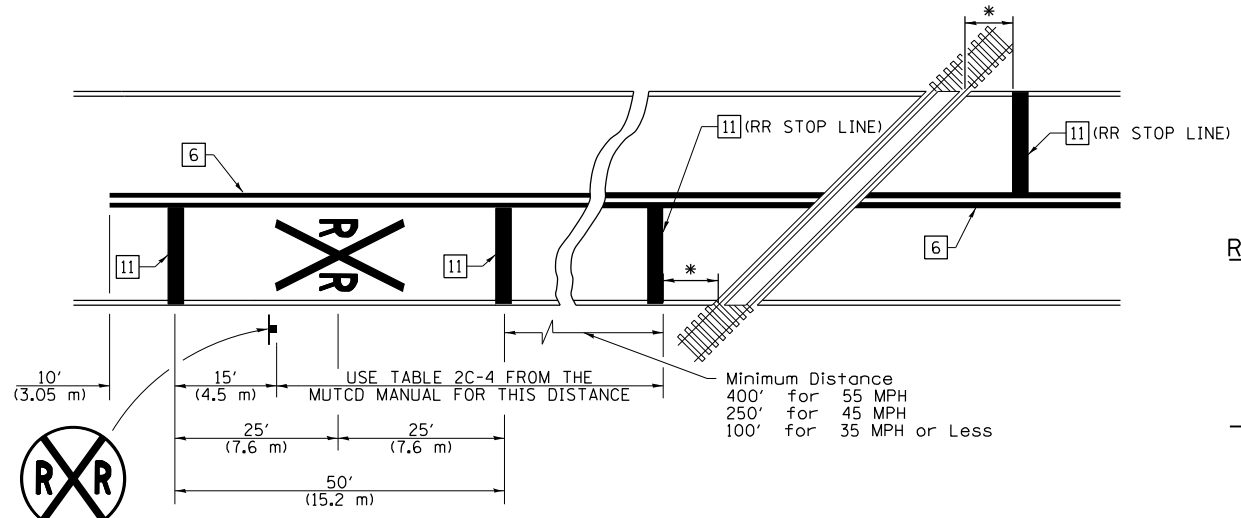
F.A.P. RTE.	SECTION	COUNTY	TOTAL SHEETS	SHEET NO.
781	1RS-4	CRAWFORD	25	24
CONTRACT NO. 74B53				
ILLINOIS FED. AID PROJECT				

SUPPLEMENTAL PAVEMENT MARKING TREATMENT FOR RAILROAD-HIGHWAY GRADE CROSSING

PAVEMENT MARKING LEGEND

- 1 4" (100) SKIP-DASH (YELLOW)
 - 2 4" (100) SOLID (YELLOW)
 - 3 12" (300) DIAGONAL (YELLOW)
 - 4 4" (100) DOUBLE YELLOW (NARROW)
 - 5 12" (300) SOLID WHITE
 - 6 4" (100) DOUBLE YELLOW (WIDE)
 - 7 6" (150) SKIP-DASH (WHITE)
 - 8 4" (100) SOLID (WHITE)
 - 9 12" (300) DIAGONAL (WHITE)
 - 10 6" (150) SOLID (WHITE)
 - 11 24" (600) STOP BAR (WHITE)
 - 12 8" (200) SOLID (WHITE)
 - 13 4" (100) PARKING WHITE
-

PAVEMENT MARKINGS AT RAILROAD-HIGHWAY GRADE CROSSING



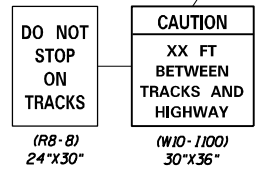
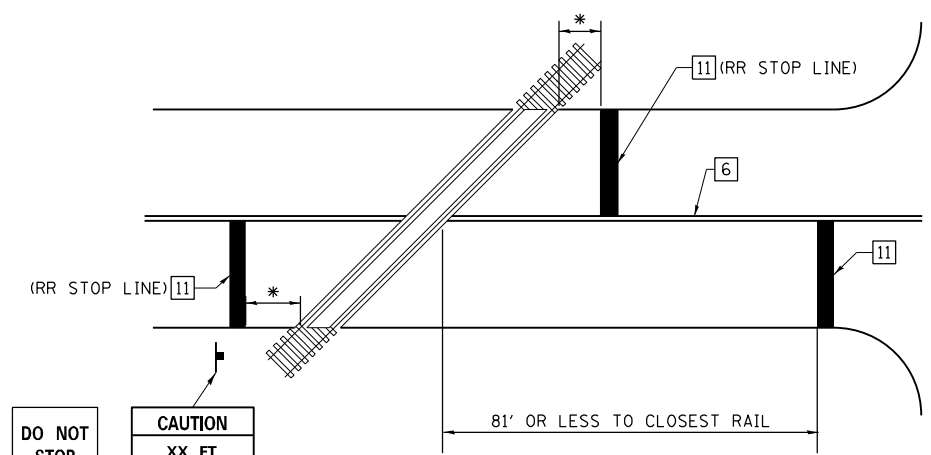
NOTES

THE TRAVERSE SPREAD OF THE "X" MAY VARY ACCORDING TO LANE WIDTH.

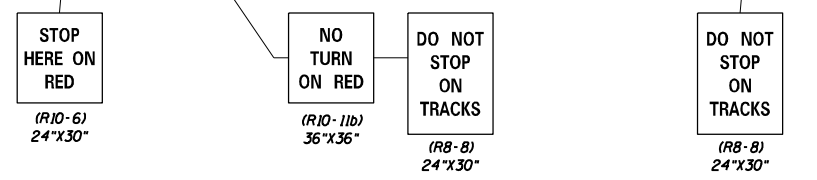
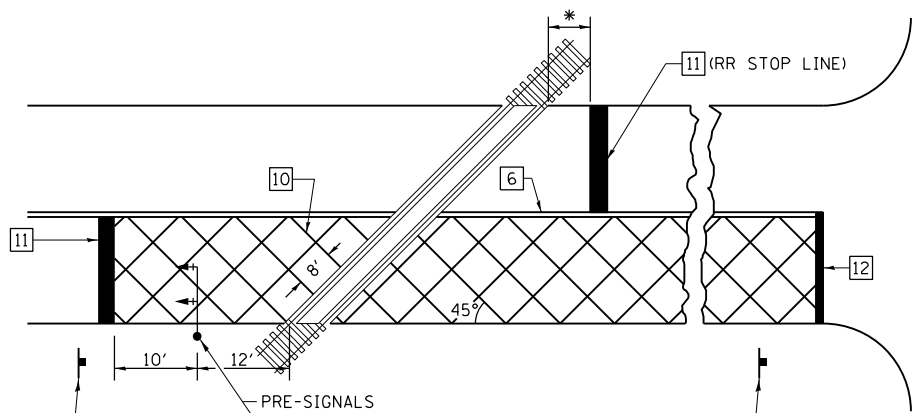
ON MULTI-LANE ROADS, THE STOP LINES SHALL EXTEND ACROSS ALL APPROACH LANES AND SEPARATE RRR SYMBOLS SHALL BE PLACED ADJACENT TO EACH OTHER IN EACH LANE.

WHEN THE PAVEMENT MARKING SYMBOL IS USED, A PORTION OF THE SYMBOL SHOULD BE LOCATED DIRECTLY ADJACENT TO THE ADVANCE WARNING SIGN (W10-1) AS PLACED BY TABLE II-1, CONDITION B OF THE MUTCD.

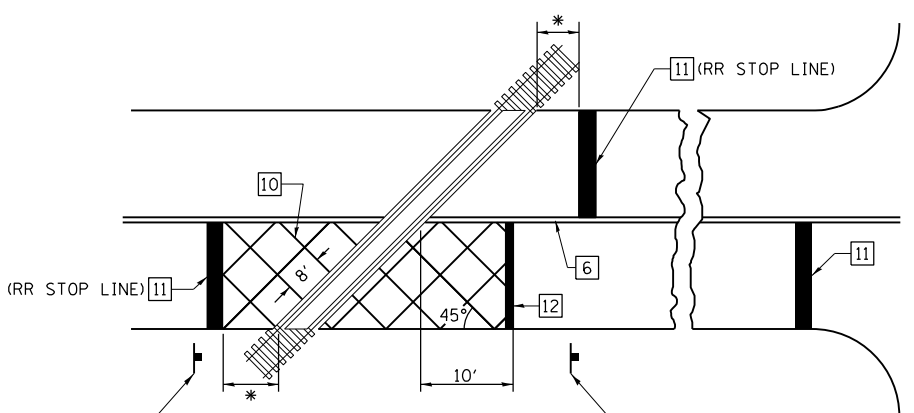
RAILROAD CROSSING WITH NON-SIGNALIZED INTERSECTION



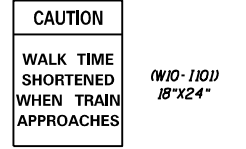
RAILROAD CROSSING WITH INTERCONNECT AND PRE-SIGNALS



RAILROAD CROSSING WITH INTERCONNECT ONLY



- ### GENERAL NOTES
- SUPPLEMENTAL PAVEMENT MARKINGS TO BE INSTALLED ONLY ON APPROACHES TO INTERSECTIONS CONTROLLED BY TRAFFIC SIGNALS WHICH ARE INTERCONNECTED WITH THE RAILROAD WARNING SIGNALS.
 - EXTEND PAVEMENT MARKINGS TO THE INTERSECTION ONLY WHERE PRE-SIGNALS ARE USED.
 - WHEN PEDESTRIAN SIGNALS ARE PRESENT WITH INTERCONNECTED SIGNALS, WARNING SIGN W10-1101 (18"x24") SHALL BE PLACED NEAR EACH PEDESTRIAN SIGNAL HEAD. COUNTDOWN PEDESTRIAN SIGNAL HEADS SHALL NOT BE UTILIZED ALONG WITH INTERCONNECTED SIGNALS.
 - PLEASE REFER TO THE IDOT BUREAU OF OPERATION MEMO OPS T-06 DATED DECEMBER 1, 2020 FOR ADDITIONAL INFORMATION.



- * 15' FROM NEAR RAIL OR 8' FROM AND PARALLEL TO GATE IF PRESENT
- ** WARNING SIGN W10-1100 SHALL BE USED AS AN INTERIM MEASURE AT INTERCONNECTED SIGNAL LOCATIONS WHERE PRE-SIGNALS ARE TO BE INSTALLED IN THE FUTURE. THIS SIGN SHALL BE REMOVED WHEN THE PRE-SIGNALS ARE INSTALLED AND THE PAVEMENT MARKINGS ARE EXTENDED TO THE INTERSECTION.

NOT TO SCALE
Note: All dimensions are in INCHES (millimeters) unless otherwise shown.

DISTRICT 7 DETAIL NO. 7800001

MODEL: Default
FILE NAME: p:\idistrict-pw-beadefy.com\PI\IDOT\Documents\1\DOT Office\Director 7\Project\74853\CADD\DATA\CAD\Sheet\74853-RR-detail.dwg

USER NAME = jessica.hille	DESIGNED -	REVISED - NAS 06/22
PLOT SCALE = 100,0000' / in.	DRAWN -	REVISED -
PLOT DATE = 3/21/2024	CHECKED -	REVISED -
	DATE - 3/21/2024	REVISED -

STATE OF ILLINOIS
DEPARTMENT OF TRANSPORTATION

PAVEMENT MARKING AND RAISED REFLECTIVE PAVEMENT MARKERS
(RURAL & URBAN APPLICATIONS)

F.A.P. RTE.	SECTION	COUNTY	TOTAL SHEETS	SHEET NO.
781	1RS-4	CRAWFORD	25	25
CONTRACT NO. 74853				

SCALE: NO SCALE SHEET 4 OF 4 SHEETS STA. TO STA.

ILLINOIS FED. AID PROJECT