

STATE OF ILLINOIS
 DEPARTMENT OF TRANSPORTATION
 DIVISION OF HIGHWAYS

**PROPOSED
 HIGHWAY PLANS**

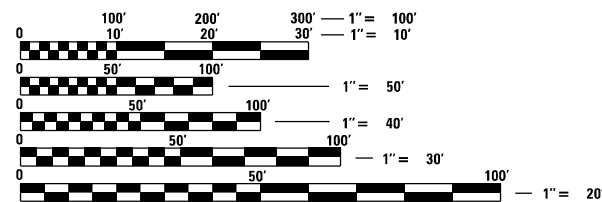
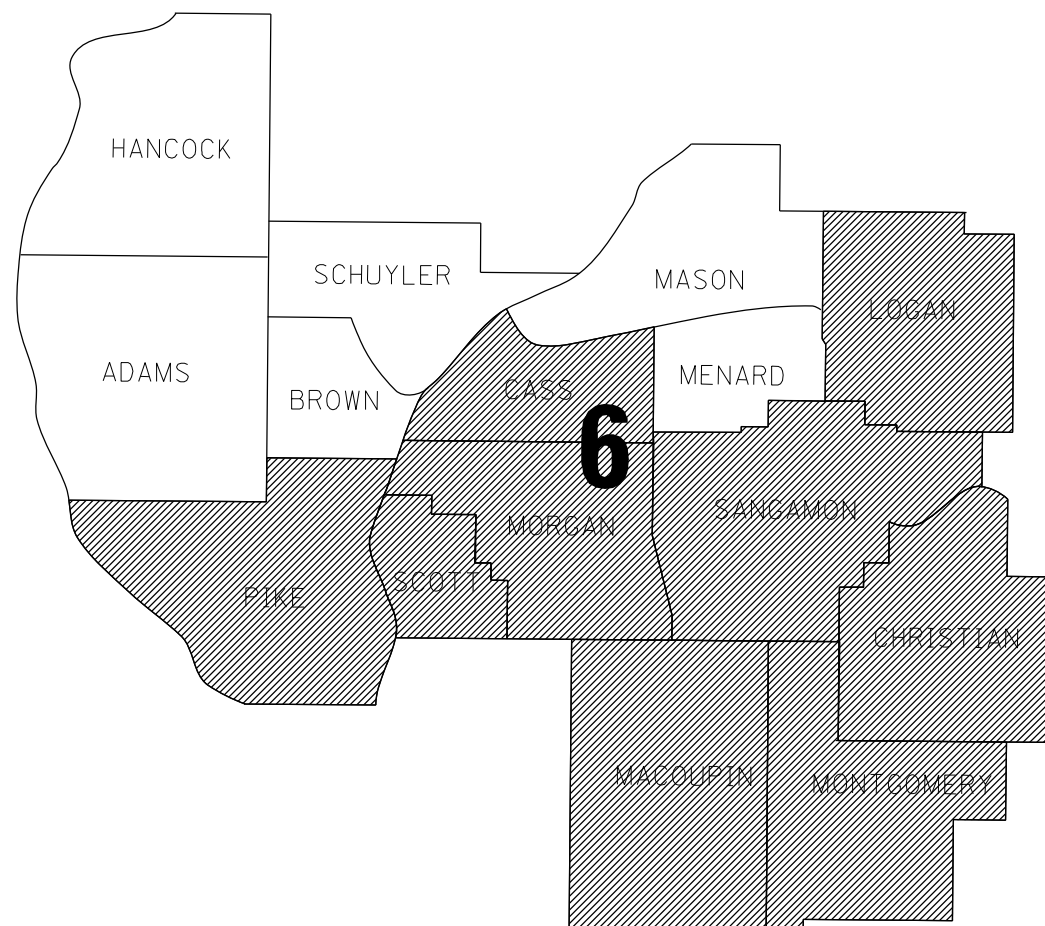
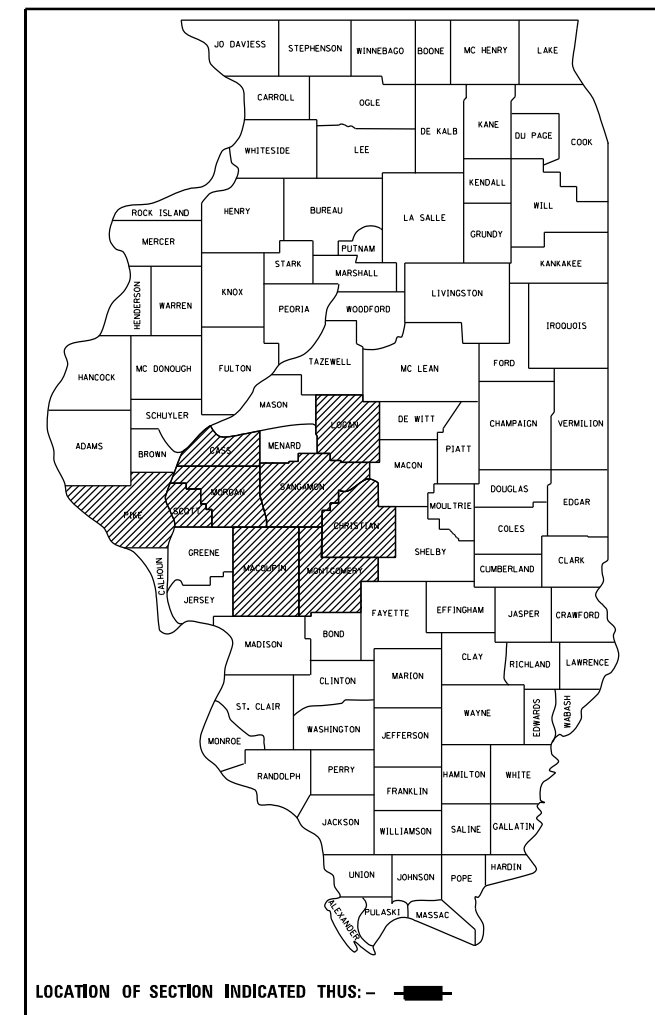
VARIOUS ROUTES
 SECTION D 6 HT PVMNT MRK RPR 25-10
 VARIOUS COUNTIES
 M-60-010-25

FOR INDEX OF SHEETS, SEE SHEET NO. 2

RTE.	SECTION	COUNTY	TOTAL SHEETS	SHEET NO.
VAR.	.	VARIOUS	8	1
		ILLINOIS	CONTRACT NO. 46653	

•D-6 HT PVMNT MRK RPR 25-10

D-XX-XXX-XX



FULL SIZE PLANS HAVE BEEN PREPARED USING STANDARD ENGINEERING SCALES, REDUCED SIZED PLANS WILL NOT CONFORM TO STANDARD SCALES. IN MAKING MEASUREMENTS ON REDUCED PLANS, THE ABOVE SCALES MAY BE USED.

J.U.L.I.E.
 JOINT UTILITY LOCATION INFORMATION FOR EXCAVATION
 1-800-892-0123
 OR 811

PROJECT ENGINEER: JASON JONES (217) 785-5306
 PROJECT MANAGER: ERIC RENT (217) 785-0289

CONTRACT NO. 46653

STATE OF ILLINOIS
 DEPARTMENT OF TRANSPORTATION
 DIVISION OF HIGHWAYS

SUBMITTED March 27 2024
[Signature] REGION FOUR ENGINEER
 May 10, 2024 [Signature]
 ENGINEER OF DESIGN AND ENVIRONMENT
 May 10, 2024 [Signature]
 DIRECTOR OF HIGHWAYS PROJECT IMPLEMENTATION

PRINTED BY THE AUTHORITY
 OF THE STATE OF ILLINOIS

INDEX OF SHEETS

- 1 COVER SHEET
- 2 INDEX OF SHEETS, STANDARDS, & SIGNATURES
- 3 SUMMARY OF QUANTITIES
- 4-8 SCHEDULE OF QUANTITIES

STANDARDS

- 000001-08 STANDARD SYMBOLS, ABBREVIATIONS AND PATTERNS
- 001006 DECIMAL OF AN INCH AND OF A FOOT
- 701311-03 LN CLOSURE 2L2W-MOVING OP DAY ONLY
- 701400-12 APPROACH TO LANE CLOSURE-FREEWAY EXPRESSWAY
- 701406-13 LANE CLOSURE FREEWAY EXPRESSWAY-DAY OP ONLY
- 701426-09 LANE CLOSURE MULTI LANE-INTERMITTANT OR MOVING OP 45 MPH OR MORE
- 701427-05 LANE CLOSURE MULTI LANE-INTERMITTANT OR MOVING OP FOR SPEEDS LESS THAN 40 MPH
- 701456-05 PARTIAL EXIT RAMP CLOSURE FREEWAY/EXPRESSWAY
- 701501-06 URBAN LANE CLOSURE 2L2W-UNDIVIDED
- 701502-09 URBAN LANE CLOSURE 2L2W WITH BIDIRECT LEFT TURN LANE
- 701601-09 URBAN LANE CLOSURE, MULTILANE, 1W OR 2W WITH NONTRAVERSABLE MEDIAN
- 701602-10 URBAN LANE CLOSURE, MULTILANE, 2W WITH BIDIRECTIONAL LEFT TURN LANE
- 701701-10 URBAN LANE CLOSURE MULTILANE INTERSECTION
- 701901-09 TRAFFIC CONTROL DEVICES
- 780001-05 TYPICAL PAVEMENT MARKINGS

REV. - MS

*D-6 HT PVMNT MRK RPR 25-10

FILE NAME =	USER NAME = Eric.Rent	DESIGNED -	REVISED -	STATE OF ILLINOIS DEPARTMENT OF TRANSPORTATION	GENERAL NOTES	RTE.	SECTION	COUNTY	TOTAL SHEETS	SHEET NO.	
S:\CONTRMAINT_CAD\46653 DB HT PVMNT MRK	FY 25-10\sheet 2-GenNotes.dgn	DRAWN -	REVISED -			VAR.	*	VARIOUS	8	2	
Default	PLOT SCALE = 2.0000' / 1in.	CHECKED -	REVISED -			CONTRACT NO. 46653					
	PLOT DATE = 3/25/2024	DATE -	REVISED -			SCALE:	SHEET	OF	SHEETS	STA.	TO

ILLINOIS FED. AID PROJECT

CODE NO.	ITEM	UNIT	TOTAL QUANTITY	100% STATE	100% STATE	100% STATE	100% STATE	100% STATE	100% STATE	100% STATE	100% STATE	100% STATE
				CASS	CHRISTIAN	LOGAN	MACOUPIN	MONTGOMERY	MORGAN	PIKE	SANGAMON	SCOTT
				ROADWAY 0021	ROADWAY 0021	ROADWAY 0021	ROADWAY 0021	ROADWAY 0021	ROADWAY 0021	ROADWAY 0021	ROADWAY 0021	ROADWAY 0021
78000100	THERMOPLASTIC PAVEMENT MARKING - LETTERS AND SYMBOLS	SQ FT	1,576	-	-	-	-	-	1,576	-	-	-
78000400	THERMOPLASTIC PAVEMENT MARKING - LINE 6"	FOOT	4,595	-	140	-	-	1,275	925	2,255	-	-
78000500	THERMOPLASTIC PAVEMENT MARKING - LINE 8"	FOOT	290	-	-	-	-	140	150	-	-	-
78000600	THERMOPLASTIC PAVEMENT MARKING - LINE 12"	FOOT	1,794	-	132	-	-	365	465	832	-	-
78000650	THERMOPLASTIC PAVEMENT MARKING - LINE 24"	FOOT	954	-	50	-	-	290	440	160	-	14
78009000	MODIFIED URETHANE PAVEMENT MARKING - LETTERS AND SYMBOLS	SQ FT	15,506	165	1,246	-	-	-	4,022	362	9,551	160
78009005	MODIFIED URETHANE PAVEMENT MARKING - LINE 5"	FOOT	2,316,123	6,465	134,160	191,375	15,450	-	430,050	658,578	826,055	53,990
78009006	MODIFIED URETHANE PAVEMENT MARKING - LINE 6"	FOOT	70,520	515	11,425	-	-	-	19,750	1,630	37,200	-
78009008	MODIFIED URETHANE PAVEMENT MARKING - LINE 8"	FOOT	37,065	-	1,715	3,000	100	-	8,450	11,450	8,900	3,450
78009012	MODIFIED URETHANE PAVEMENT MARKING - LINE 12"	FOOT	11,430	420	2,475	320	-	-	1,020	520	6,575	100
78009024	MODIFIED URETHANE PAVEMENT MARKING - LINE 24"	FOOT	6,570	59	435	-	50	-	2,310	119	3,525	72
78300201	PAVEMENT MARKING REMOVAL - GRINDING	SQ FT	10,000	1,111	1,111	1,111	1,111	1,111	1,111	1,111	1,112	1,111
X7800825	HOT SPRAY THERMOPLASTIC PAVEMENT MARKING LINE - 5 INCH	FOOT	82,373	-	10,273	-	-	15,980	47,300	8,820	-	-

REV. - MS

#D-6 HT PVMNT MRK RPR 25-10

FILE NAME =	USER NAME = Eric.Rent	DESIGNED -	REVISED -	STATE OF ILLINOIS DEPARTMENT OF TRANSPORTATION	SUMMARY OF QUANTITIES				RTE.	SECTION	COUNTY	TOTAL SHEETS	SHEET NO.
S:\CONTRMAINT_CAD\46653 D6 HT PVMNT MRK FY 25-10\sheet 3-S00.dgn	DRAWN -	REVISED -	VAR.						*	VARIOUS	8	3	
Default	PLOT SCALE = 2.0000' / 1in.	CHECKED -	REVISED -		SCALE:	SHEET	OF	SHEETS	STA.	TO	STA.	CONTRACT NO. 46653	
	PLOT DATE = 3/25/2024	DATE -	REVISED -		ILLINOIS FED. AID PROJECT								

46653-GROUP 1			MODIFIED URETHANE PVMNT MRK	78009005		78009006	78009008	78009012		7809024	78009000	Notes/Comments
Work Order Job #	County	Nearest Town	Location Description	5 INCH MODIFIED URETHANE	5 INCH MODIFIED URETHANE	6 INCH MODIFIED URETHANE	8 INCH MODIFIED URETHANE	12 INCH MODIFIED URETHANE	12 INCH MODIFIED URETHANE	24 INCH MODIFIED URETHANE	LETTERS AND SYMBOLS MODIFIED URETHANE	
				WHITE	YELLOW	WHITE	WHITE	WHITE	YELLOW	WHITE	WHITE	
1	Cass	Virginia	Virginia: IL 78. Illini St to Sylvan St.	4800	1665	515		420		59	165.1	Piano Crosswalks
2	Christian	Assumption	US51, 600' south of E 1000 N Rd south to E 540 N Rd	62900	49600	11175	1715	675	1800	375	1123.2	Y.I.E.L.D (8) Letters 8'
3	Christian	Pana	US 51: 1.5 miles N. of IL16, Rail Road Crossing Only							60	122.4	
4	Christian	Taylorville	IL 29 Taylorville Bridge over IL 48	630	630							
5	Christian	Taylorville	IL 29: E Joint at Bridge over IL 48 to 830' N of Kennedy Rd	13900	6500	250					0	
6	Logan	Atlanta	I-55 BJ to McClean Co Line	104675	86700		3000	320			0	
7	Macoupin	Carlinville	IL 108 (Carlinville) IL 4/108 intersection to 650' W of Rosedale Rd	6400	5950						0	
8	Macoupin	Carlinville	IL 4/108 Int to 410' S of Int. on IL 4	1600	1500		100			50	0	
9	Morgan	Jacksonville	Jacksonville. Mound Rd., Intersection Morton Ave./ Mound Rd. to Bridge over Rte. 104	9900	1250						0	
10	Morgan	Jacksonville	Jacksonville: IL 104. Butt Joint 400' East of Mound Rd to Butt Joint 125' West of Brooklyn Ave	13600	60000	17350	1250	75	300	2100	3326.5	Crosswalks

*PAVEMENT MARKING REMOVAL GRINDING TO BE DETERMINED BY THE ENGINEER ON AN AS NEEDED BASIS

*D-6 HT PVMNT MRK RPR 25-10

FILE NAME = S:\CONTRMAINT_CAD\46653 D6 HT PVMNT MRK	USER NAME = Eric.Rent	DESIGNED -	REVISED -	STATE OF ILLINOIS DEPARTMENT OF TRANSPORTATION	LOCATIONS: MODIFIED URETHANE #1-10 GROUP-1 (CASS,CHRISTIAN,LOGAN,MACOUPIN,MORGAN)	RTE.	SECTION	COUNTY	TOTAL SHEETS	SHEET NO.	
Default	PLT SCALE = 2.0000' / in.	DRAWN -	REVISED -			VAR.	*	VARIOUS	8	4	
	PLT DATE = 3/25/2024	CHECKED -	REVISED -			SCALE: SHEET OF SHEETS STA. TO STA.		CONTRACT NO. 46653		ILLINOIS FED. AID PROJECT	
		DATE -	REVISED -								

46653-GROUP 1			MODIFIED URETHANE PVMNT MRK	78009005	78009006	78009008	78009012	7809024	78009000	Notes/Comments		
Work Order Job #	County	Nearest Town	Location Description	5 INCH MODIFIED URETHANE	5 INCH MODIFIED URETHANE	6 INCH MODIFIED URETHANE	8 INCH MODIFIED URETHANE	12 INCH MODIFIED URETHANE	12 INCH MODIFIED URETHANE		24 INCH MODIFIED URETHANE	LETTERS AND SYMBOLS MODIFIED URETHANE
				WHITE	YELLOW	WHITE	WHITE	WHITE	YELLOW		WHITE	WHITE
21	Sangamon	Springfield	N Dirksen ---BJ @ Linden Ave. to BJ @ Ridge Ave	13250	15125	2975			50	300	748.8	48 Left Arrows
22	Sangamon	Springfield	N. Walnut St/IL 29: W. Jefferson to North Grand	13350	8250	4300	1100	1100	300	600	574.2	32 Left Arrows, 2 Thru Arrows, 2 Combo Arrows
23	Sangamon	Williamsville (3	IL 123: N. side Chevrons in Dead lane only				700		700			0 Shoulder Chevrons for scale pad
Totals				434,125	426,880	68,720	15,660	5,030	6,005	6,304	14,881	
				5 INCH MODIFIED URETHANE	5 INCH MODIFIED URETHANE	6 INCH MODIFIED URETHANE	8 INCH MODIFIED URETHANE	12 INCH MODIFIED URETHANE	12 INCH MODIFIED URETHANE	24 INCH MODIFIED URETHANE	LETTERS AND SYMBOLS MODIFIED URETHANE	
				WHITE	YELLOW	WHITE	WHITE	WHITE	YELLOW	WHITE	WHITE	

*PAVEMENT MARKING REMOVAL GRINDING TO BE DETERMINED BY THE ENGINEER ON AN AS NEEDED BASIS

*D-6 HT PVMNT MRK RPR 25-10

FILE NAME =	USER NAME = Eric.Rent	DESIGNED -	REVISED -	STATE OF ILLINOIS DEPARTMENT OF TRANSPORTATION	LOCATIONS GROUP-1 MODIFIED URETHANE #21-23 (SANGAMON)				RTE.	SECTION	COUNTY	TOTAL SHEETS	SHEET NO.	
S:\CONTRMAINT_CAD\46653 D6 HT PVMNT MRK	FY 25-10\sheet 4-8 Locations.dgn	DRAWN -	REVISED -		SCALE:	SHEET	OF	SHEETS	STA.	TO	STA.	VARIOUS	8	6
Default	PLOT SCALE = 2.0000 ' / in.	CHECKED -	REVISED -		CONTRACT NO. 46653									
	PLOT DATE = 3/25/2024	DATE -	REVISED -		ILLINOIS FED. AID PROJECT									

46653-GROUP 1			HOT SPRAY/ THERMO PVMT MRK	X7800825		78000400	78000500	78000600		78000650	78000100	Notes/Comments
Work Order Job #	County	Nearest Town	Location Description	5 INCH HOT SPRAY	5 INCH HOT SPRAY	6 INCH THERMO PLASTIC	8 INCH THERMO PLASTIC	12 INCH THERMO PLASTIC	12 INCH THERMO PLASTIC	24 INCH THERMO PLASTIC	LETTERS AND SYMBOLS THERMO PLASTIC	
				WHITE	YELLOW	WHITE	WHITE	WHITE	YELLOW	WHITE	WHITE	
101	Christian	Stonington	IL 48 (Stonington): 440' S of County Rd to 1300' N of North St	9000	1235						0	
102	Christian	Taylorville	Webster/Bidwell Intersection (Taylorville)		38	140		132		50	0	
103	Montgomery	Nokomis	N. Spruce St: IL 16 to Nokomis-Raymond Blacktop (Madison St)	500	3000	200		135		60		
104	Montgomery	Raymond	IL 127/48 (Raymond): 1000' E of Dorshell St to 100' E of Springfield/Black Diamond Tr, 100' S on 127	9380	3100	1075	140	230		230	0	
105	Morgan	Jacksonville	IL78/Walnut St., BJ at W Oak St. to Intersection of IL78/IL104	13300	34000	600	150	150	165	400	1575.6	99 Left Arrows, 2 Right Arrows
106	Morgan	Waverly	IL 104 Waverly: 104/111 Stop Bars & Crosswalks @ 104/ Prospect St. Crosswalk only			325		150		40	0	Crosswalks & Stop Bars
107	Pike	Griggsville	IL 107 in Griggsville: Stop bars south of Griggsville, all crosswalks/parking lanes/stop bars through Griggsville.		570	1,755		732		70	0	
108	Pike	Pleasant Hill	IL 96 in Pleasant Hill: Road 2650 East to BJ 75' S of 5th St	7,250	1,000	500		100		90	0	There is 1260' of 5" yellow parking spots (hand work) in Pleasant Hill that I did not put in my calcs because im not sure the state is responsible for them.
109	Scott	Winchester	IL 106 at Hillview Rd: 2.5 Mi E. of IL 100/106 Int, Stop Bar ONLY							14	0	Stop Bar
Totals				39430	42943	4595	290	1629	165	954	1575.6	
				5 INCH HOT SPRAY	5 INCH HOT SPRAY	6 INCH THERMO PLASTIC	8 INCH THERMO PLASTIC	12 INCH THERMO PLASTIC	12 INCH THERMO PLASTIC	24 INCH THERMO PLASTIC	LETTERS AND SYMBOLS THERMO PLASTIC	
				WHITE	YELLOW	WHITE	WHITE	WHITE	YELLOW	WHITE	WHITE	

*PAVEMENT MARKING REMOVAL GRINDING TO BE DETERMINED BY THE ENGINEER ON AN AS NEEDED BASIS

*D-6 HT PVMNT MRK RPR 25-10

FILE NAME =	USER NAME = Eric.Rent	DESIGNED -	REVISED -	STATE OF ILLINOIS DEPARTMENT OF TRANSPORTATION	LOCATIONS: HOT SPRAY/THERMOPLASTIC #101-109 GROUP-1 (CHRISTIAN,MONTGOMERY,MORGAN,PIKE,SCOTT)	RTE.	SECTION	COUNTY	TOTAL SHEETS	SHEET NO.
S:\CONTRMAINT_CAD\46653 D6 HT PVMNT MRK FY 25-10\sheet 4-8 Locations.dgn	DRAWN -	REVISED -	VAR.			*	VARIOUS	8	7	
Default	PLOT SCALE = 2.0000' / 1in.	CHECKED -	REVISED -			CONTRACT NO. 46653		ILLINOIS FED. AID PROJECT		
	PLOT DATE = 3/25/2024	DATE -	REVISED -			SCALE:	SHEET OF SHEETS	STA. TO STA.		

REV. - MS

46653-GROUP 2			MODIFIED URETHANE PVMT MRK	78009005		78009006	78009008	78009012		7809024	78009000	Notes/Comments
Work Order Job #	County	Nearest Town	Location Description	5 INCH MODIFIED URETHANE	5 INCH MODIFIED URETHANE	6 INCH MODIFIED URETHANE	8 INCH MODIFIED URETHANE	12 INCH MODIFIED URETHANE	12 INCH MODIFIED URETHANE	24 INCH MODIFIED URETHANE	LETTERS AND SYMBOLS MODIFIED URETHANE	
				WHITE	YELLOW	WHITE	WHITE	WHITE	YELLOW	WHITE	WHITE	
201	Morgan	Jacksonville	I-72: BJ 600' W. Of MM 60 to BJ 950' W. Of MM 72	164450	137950	1800	7000	250		110	305.3	2 Left Arrows, 5 Right Arrows, 4 Small Thru Arrows, 7 Wrong Way Arrows
202	Pike	Barry	I-72 M.P. 11.17 to M.P. 30.35 (EBL/WBL) BUTT JOINT 4 LANE SECTION THIS SECTION ALSO INCLUDES RAMPS AT BARRY EXIT#20	258,589	206,749		3,455	45		84	159.6	2 Left Turn Arrows, 2 Right Turn Arrows, 4 Wrong Way Arrows
203	Pike	Griggsville	I-72 M.P. 30.35 to M.P. 35.5 (4 LANE SECTION EB and WB)	62,050	49,650		7,500				0	8" Gore measurements include exit 35 & 31
204	Pike	Hull	I-72, Miss. River Bridge to SNY Bridge (M.M. 2.4)	32,750	26,200						0	
205	Sangamon	Buffalo	I-72: BJ 1100' W. Of MM 119 to BJ 750' W. Of MM 112	89440	73150						0	
206	Sangamon	New Berlin	I-72: Morgan/Sangamon Co. Line to Overpass over Wabash Ave.	166750	133400						0	
207	Scott	Winchester	I-72: BJ 2790' W of MM 54 to BJ @ Kaltchnee Ln.	27465	26525		3450	100		72	159.6	2 Left Arrows, 2 Right Arrows, 4 Wrong Way Arrows
Totals				801,494	653,624	1,800	21,405	395	0	266	625	
				5 INCH MODIFIED URETHANE	5 INCH MODIFIED URETHANE	6 INCH MODIFIED URETHANE	8 INCH MODIFIED URETHANE	12 INCH MODIFIED URETHANE	12 INCH MODIFIED URETHANE	24 INCH MODIFIED URETHANE	LETTERS AND SYMBOLS MODIFIED URETHANE	
				WHITE	YELLOW	WHITE	WHITE	WHITE	YELLOW	WHITE	WHITE	

•PAVEMENT MARKING REMOVAL GRINDING TO BE DETERMINED BY THE ENGINEER ON AN AS NEEDED BASIS

•D-6 HT PVMT MRK RPR 25-10

FILE NAME = S:\CONTRMAINT_CAD\46653 D6 HT PVMT MRK	USER NAME = Eric.Rent	DESIGNED -	REVISED -	STATE OF ILLINOIS DEPARTMENT OF TRANSPORTATION	LOCATIONS: MODIFIED URETHANE #201-207 GROUP-2 (MORGAN,PIKE,SANGAMON,SCOTT)	RTE.	SECTION	COUNTY	TOTAL SHEETS	SHEET NO.	
Default	PLT SCALE = 2.0000' / in.	DRAWN -	REVISED -			VAR.	*	VARIOUS	8	8	
	PLOT DATE = 3/25/2024	CHECKED -	REVISED -			CONTRACT NO. 46653		ILLINOIS FED. AID PROJECT			
		DATE -	REVISED -			SCALE:	SHEET OF SHEETS	STA. TO STA.			