

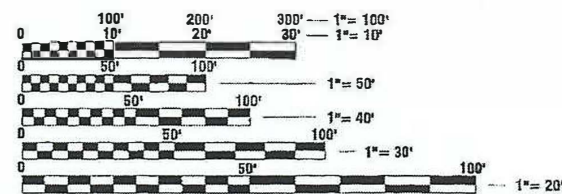
06-14-2024 LETTING ITEM 208

**INDEX OF SHEETS**

SHEET NUMBER	SHEET TITLE
1	COVER
2	GENERAL NOTES & SUMMARY OF QUANTITIES
3	SCHEDULES AND TYPICAL SECTIONS
4	EROSION CONTROL PLAN
5	GRADING PLAN
6	PLAN AND PROFILE
7	CROSS SECTIONS (1 OF 2)
8	CROSS SECTIONS (2 OF 2)
9	GENERAL PLAN AND ELEVATION
10	CULVERT DETAILS (1 OF 2)
11	CULVERT DETAILS (2 OF 2)
12	BORINGS (1 OF 2)
13	BORINGS (2 OF 2)
14	DETOUR PLAN

**STANDARDS**

000001-08	STANDARD SYMBOLS, ABBREVIATIONS AND PATTERNS
001001-02	AREAS OF REINFORCEMENT BARS
001006	DECIMAL OF AN INCH AND OF A FOOT
280001-07	TEMPORARY EROSION CONTROL SYSTEMS
515001-04	NAME PLATE FOR BRIDGES
601001-05	PIPE UNDERDRAINS
601101-02	CONCRETE HEADWALL FOR PIPE UNDERDRAIN
701001-02	OFF-ROAD OPERATIONS, 2L, 2W, MORE THAN 15' (4.5 M) AWAY
701006-05	OFF-ROAD OPERATIONS, 2L, 2W, 15' (4.5 M) TO 24' (600 MM) FROM PAVEMENT EDGE
701201-05	LANE CLOSURE, 2L, 2W, DAY ONLY, FOR SPEEDS > 45 MPH
701206-05	LANE CLOSURE, 2L, 2W, NIGHT ONLY, FOR SPEEDS > 45 MPH
701301-04	LANE CLOSURE, 2L, 2W, SHORT TIME OPERATIONS
701901-09	TRAFFIC CONTROL DEVICES
BLR 21-9	TYPICAL APPLICATION OF TRAFFIC CONTROL DEVICES FOR CONSTRUCTION ON RURAL LOCAL HIGHWAYS



FULL SIZE PLANS HAVE BEEN PREPARED USING STANDARD ENGINEERING SCALES. REDUCED SIZED PLANS WILL NOT CONFORM TO STANDARD SCALES. IN MAKING MEASUREMENTS ON REDUCED PLANS, THE ABOVE SCALES MAY BE USED.

J.U.L.I.E.  
JOINT UTILITY LOCATION INFORMATION FOR EXCAVATION  
1-800-892-0123

# STATE OF ILLINOIS

## DEPARTMENT OF TRANSPORTATION

### PLANS FOR PROPOSED STRUCTURE REPLACEMENT

#### SURFACE TRANSPORTATION PROGRAM

#### F.A.S 176 - PERRY ROAD (C.H. 7) OVER BRANCH OF BATTLE CREEK

#### SECTION 18-00050-02-BR

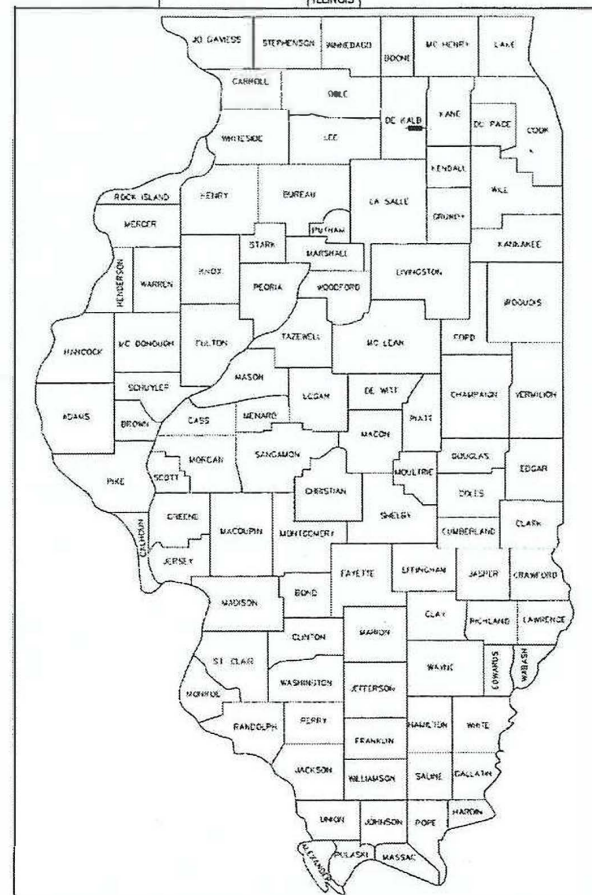
#### PROJECT ZTNP(648)

#### DEKALB COUNTY

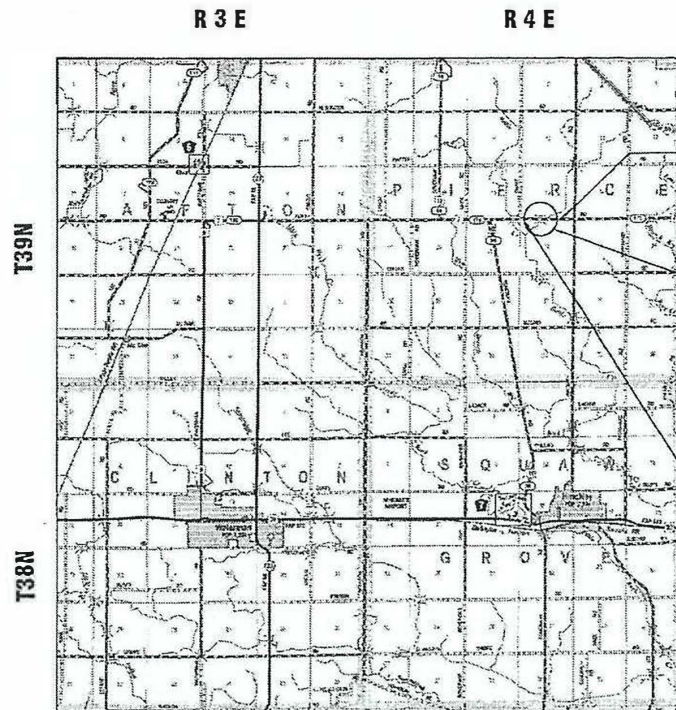
#### C-93-003-23

C.H. RTE.	SECTION	COUNTY	TOTAL SHEETS	SHEET NO.
7	18-00050-02-BR	DEKALB	14	1

ILLINOIS CONTRACT NO. 87789



LOCATION OF SECTION INDICATED THIS: - [Symbol]



LOCATION MAP NOT TO SCALE

GROSS LENGTH OF SECTION = 245 FEET (0.046 MILE)  
NET LENGTH OF SECTION = 245 FEET (0.046 MILE)

**DESIGN CRITERIA**

ROADWAY	DESIGN CLASSIFICATION	ADT	DESIGN SPEED
CH 7	MINOR COLLECTOR	2625	55 mph

END IMPROVEMENT  
STA 18+20

**SECTION 18-00050-02-BR**

STATION 17+09.87  
PROPOSED 14' SPAN X 8' HIGH CONCRETE DOUBLE BOX CULVERT AT 30 DEGREE SKEW (SN 019-3081)

EXISTING STRUCTURE #019-3043 BUILT 1990. EXISTING STRUCTURE IS A SINGLE SPAN PRECAST CONCRETE SLAB BRIDGE. OVERALL LENGTH IS 28.1 FEET. BRIDGE WIDTH IS 30 FEET. EXISTING STRUCTURE TO BE REMOVED.

BEGIN IMPROVEMENTS  
STA 16+15



*Chad Clauson 3-30-23*  
DATE  
CHAD T. CLAUSON  
DIXON, ILLINOIS  
ILLINOIS LICENSED PROFESSIONAL ENGINEER NO. 062-071543  
EXPIRES 11-30-2023



**wendler**  
wendler engineering services, inc.  
PH: 815.255.2261  
Acquired by  
Willett Hofmann & Associates Inc.

STATE OF ILLINOIS  
DEPARTMENT OF TRANSPORTATION  
DIVISION OF HIGHWAYS

SUBMITTED *March 23, 23*

*Wes G. Kelly*  
COUNTY ENGINEER

PASSED *April 14, 20 23*

*[Signature]*  
DISTRICT 3 ENGINEER OF LOCAL ROADS & STREETS

RELEASED FOR BID BASED ON LIMITED REVIEW *APRIL 14 20 23*

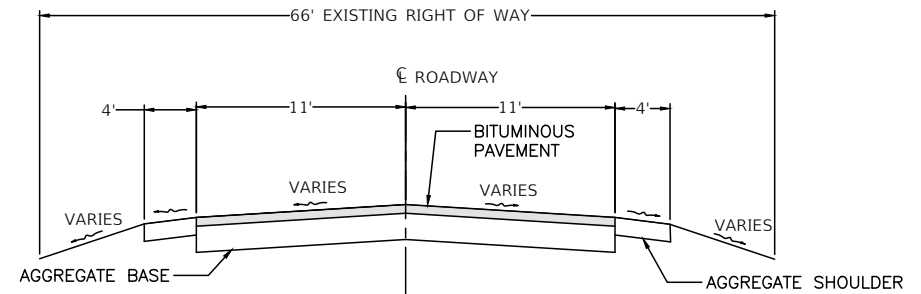
*[Signature]*  
REGION 2 ENGINEER

**PRINTED BY THE AUTHORITY  
OF THE STATE OF ILLINOIS**

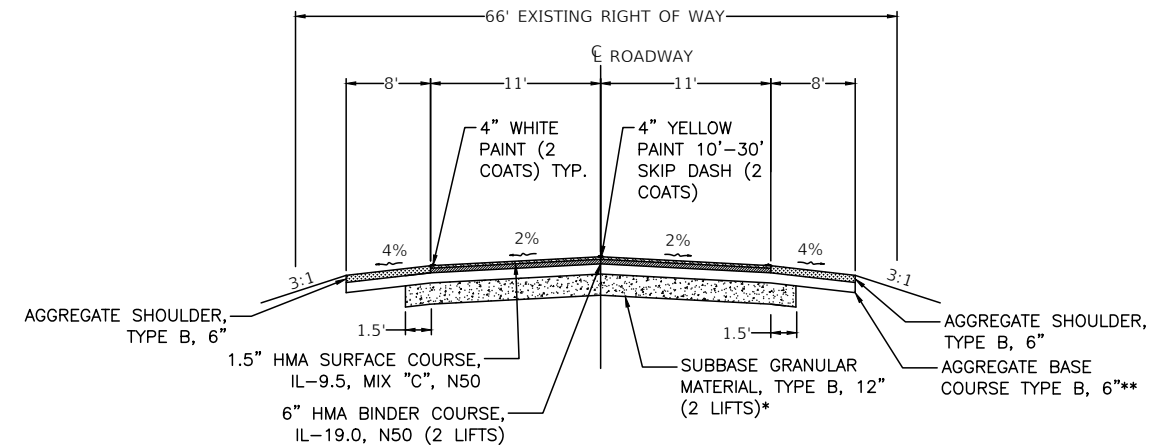


**SCHEDULE OF QUANTITIES**

<b>40603080 HOT-MIX ASPHALT BINDER COURSE, IL-19.0, N50</b>	<b>107 TON</b>	<b>25100630 EROSION CONTROL BLANKET</b>	<b>586 SQ YD</b>
LOCATION STA. 16+50 TO STA. 17+75	107 TON	LOCATION LT. STA. 15+35 TO LT. STA. 18+20	302 SQ YD
TOTAL	107 TON	RT. STA. 15+74 TO RT. STA. 18+75	284 SQ YD
		TOTAL	586 SQ YD
<b>40604050 HOT-MIX ASPHALT SURFACE COURSE, IL-9.5, MIX 'C'</b>	<b>27 TON</b>	<b>28000400 PERIMETER EROSION BARRIER</b>	<b>252 FOOT</b>
LOCATION STA. 16+50 TO STA. 17+75	27 TON	LOCATION LT. STA. 15+35 TO LT. STA. 18+20	110 FOOT
TOTAL	27 TON	RT. STA. 15+74 TO RT. STA. 18+75	142 FOOT
		TOTAL	252 FOOT
<b>48101500 AGGREGATE SHOULDERS, TYPE B 6"</b>	<b>313 SQ YD</b>	<b>X2501000 SEEDING, CLASS 2 (SPECIAL)</b>	<b>0.12 ACRE</b>
LOCATION STA. 16+15 TO STA. 18+20	313 SQ YD	LOCATION LT. STA. 15+35 TO LT. STA. 18+20	0.06 ACRE
TOTAL	313 SQ YD	RT. STA. 15+74 TO RT. STA. 18+75	0.06 ACRE
		TOTAL	0.12 ACRE
<b>31101810 SUBBASE GRANULAR MATERIAL, TYPE B 12"</b>	<b>348 SQ YD</b>	<b>XX004565 GROUTED RIP RAP</b>	<b>68 SQ YD</b>
LOCATION STA. 16+50 TO STA. 17+75	348 SQ YD	LOCATION LT. STA. 15+35 TO LT. STA. 18+20	38 SQ YD
TOTAL	348 SQ YD	RT. STA. 15+74 TO RT. STA. 18+75	30 SQ YD
		TOTAL	68 SQ YD
<b>40600275 BITUMINOUS MATERIALS (PRIME COAT)</b>	<b>698 POUND</b>		
LOCATION STA. 16+50 TO STA. 17+75	698 POUND		
TOTAL	698 POUND		
<b>40600290 BITUMINOUS MATERIALS (TACK COAT)</b>	<b>140 POUND</b>		
LOCATION STA. 16+50 TO STA. 17+75	140 POUND		
TOTAL	140 POUND		
<b>35101800 AGGREGATE BASE COURSE, TYPE B 6"</b>	<b>528 SQ YD</b>		
LOCATION STA. 16+50 TO STA. 17+75	528 SQ YD		
TOTAL	528 SQ YD		



**EXISTING TYPICAL CROSS SECTION**



**PROPOSED ROADWAY TYPICAL CROSS SECTION**

\*SUBBASE GRANULAR MATERIAL TYPE B SHALL BE CA 2 GRADATION  
\*\*AGGREGATE BASE COURSE TYPE B SHALL BE CA 10 GRADATION

LOCATION	SIDE	550A0070 - STORM SEWERS, CLASS A, TYPE 1 15"	54213660 - PRECAST REINFORCED CONCRETE FLARED END SECTIONS 15"	28000500 - INLET AND PIPE PROTECTION
		FEET	EACH	EACH
STA 16+15 TO 17+05	LT	85.2	1	1
STA 17+39 TO 17+85	LT	43.3	1	1
STA 17+15 TO 18+00	RT	79.7	1	1
<b>TOTAL</b>		<b>208.2</b>	<b>3</b>	<b>3</b>

COLUMN IDENTIFICATION	A EARTH EXCAVATION (SPECIAL)	B = A * (1-SLF) EARTH EXCAVATION ADJUSTED FOR SHRINKAGE / LOSS	C EMBANKMENT	D = B-C EARTHWORK BALANCE WASTE (+) OR SHORTAGE (-)
LOCATION	CUBIC YARD	CUBIC YARD	CUBIC YARD	CUBIC YARD
STA. 15+50 TO STA. 16+50	9	7	2	5
STA. 17+75 TO STA. 18+25	11	8	3	5
<b>TOTAL</b>	<b>20</b>	<b>15</b>	<b>5</b>	<b>10</b>
SHRINKAGE / LOSS FACTOR (SLF) = 0.25				

EARTHWORK SCHEDULE DOES NOT INCLUDE EXCAVATION FOR STRUCTURE REMOVAL AND POROUS GRANULAR EMBANKMENT, SPECIAL (STA. 16+50 TO 17+75). SUITABLE EXCAVATION IN THIS AREA AS DETERMINED BY THE ENGINEER SHALL BE USED IN LIEU OF FURNISHED EXCAVATION.

LOCATION	78001110 PAINT PAVEMENT MARKING - LINE 4"
	FEET
STA. 16+15 TO STA. 18+20 LT.	205
STA. 16+15 TO STA. 18+20 RT.	205
STA. 16+75 TO STA. 18+20	60
NUMBER OF COATS	2
<b>TOTAL</b>	<b>940</b>

LOCATION	40200800 - AGGREGATE SURFACE COURSE, TYPE B
	TON
Sta 16+34.57 LT	35
<b>TOTAL</b>	<b>35</b>

**DEKALB COUNTY HIGHWAY DEPARTMENT**

**SCHEDULES AND TYPICAL SECTIONS**

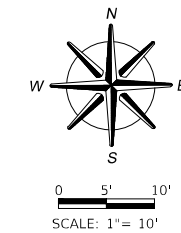
CH RTE.	SECTION	COUNTY	TOTAL SHEETS	SHEET NO.
7	18-00050-02-BR	DEKALB	14	3
CONTRACT NO			87789	
ILLINOIS FED. AID PROJECT				

SCALE: - SHEET - OF - SHEETS STA. - TO STA. -

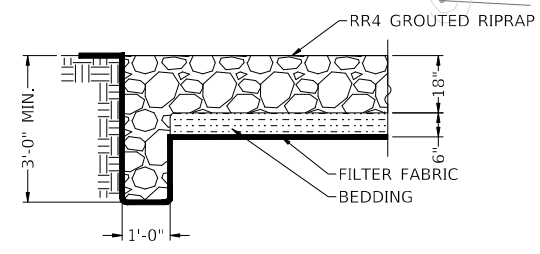
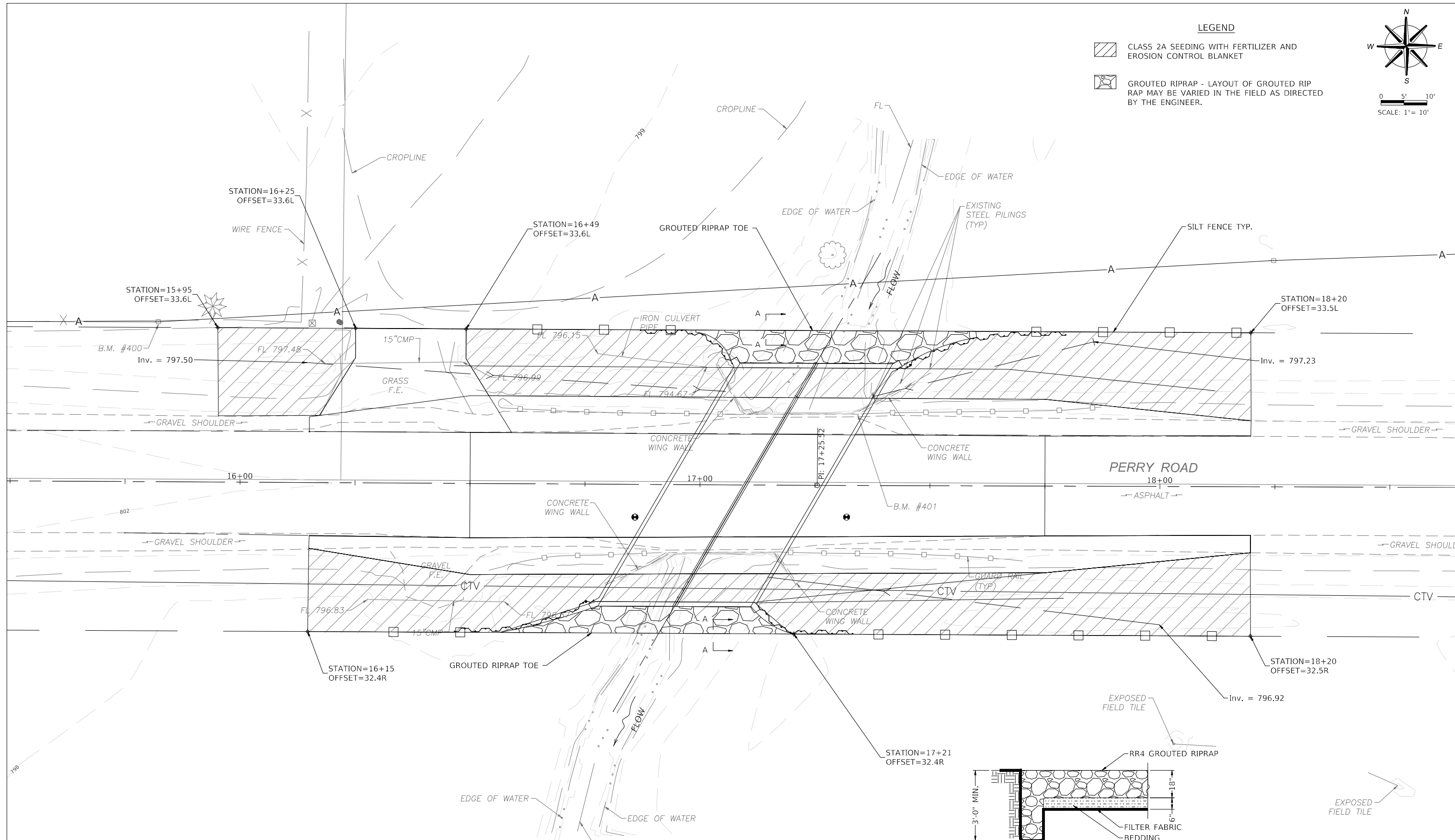
S:\PROJECTS\2023\6081023\_Perry\2220067\CAD\PLAN-2220067.dwg No ROW 4-28-24.dwg



USER NAME = chad clauson	DESIGNED - - CTC	REVISED -
PLOT SCALE = - AS NOTED	DRAWN - - CTC	REVISED -
PLOT DATE = 5/3/24	CHECKED - - SAB	REVISED -
FILE NAME = plan-2220067 - no row 4-28-24.dwg	- 4/30/2024	REVISED -



- LEGEND**
- CLASS 2A SEEDING WITH FERTILIZER AND EROSION CONTROL BLANKET
  - GROUDED RIPRAP - LAYOUT OF GROUDED RIPRAP MAY BE VARIED IN THE FIELD AS DIRECTED BY THE ENGINEER.



**SECTION A-A: GROUDED RIPRAP TOE DETAIL**  
 N.T.S.  
 RIPRAP TOE TO BE APPLIED UPSTREAM AND DOWNSTREAM OF STRUCTURE  
 TOTAL AREA OF GROUDED RIPRAP = 68.2 SY

S:\PROJECTS\2023\5081D23\_Perry\2220067\CIVIL\PLAN-2220067 - No ROW 4.28.24.dwg



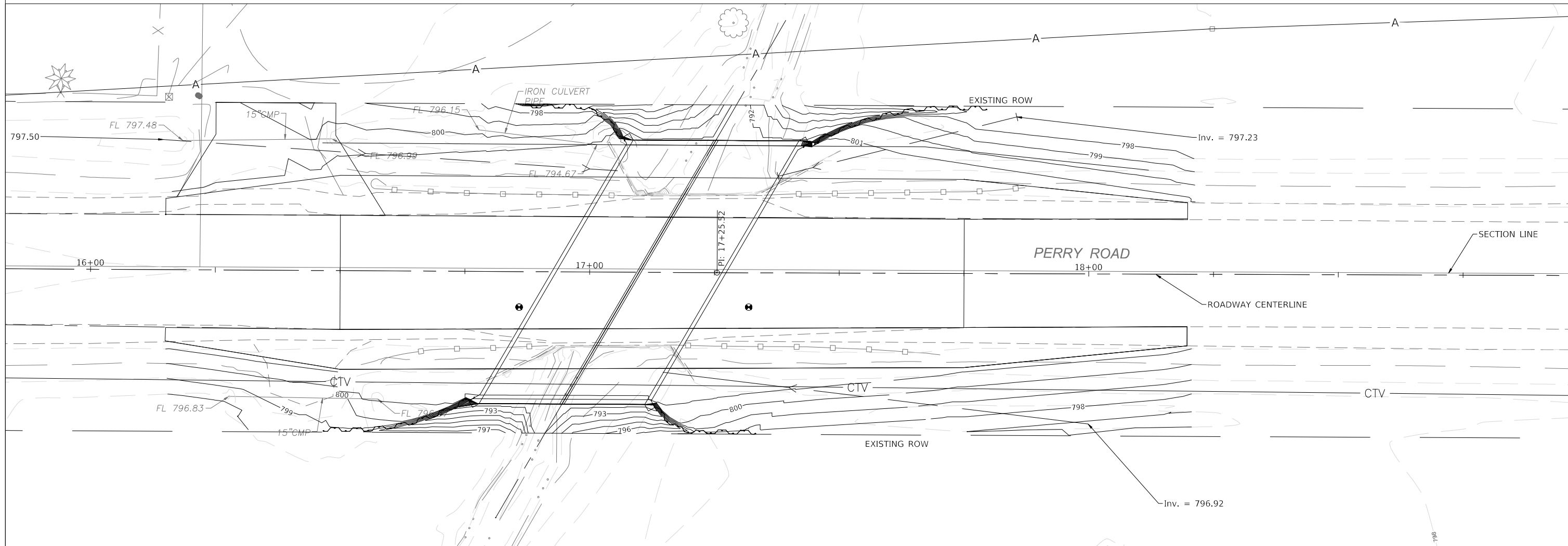
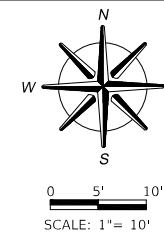
USER NAME = chad clauson	DESIGNED - - CTC	REVISED -
PLOT SCALE = - AS NOTED	DRAWN - - CTC	REVISED -
PLOT DATE = 5/1/24	CHECKED - - SAB	REVISED -
FILE NAME = plan-2220067 - no row 4.28.24.dwg	- - 4/30/2024	REVISED -

**DEKALB COUNTY HIGHWAY DEPARTMENT**

**EROSION CONTROL PLAN**

SCALE: - SHEET - OF - SHEETS STA. - TO STA. -

CH RTE.	SECTION	COUNTY	TOTAL SHEETS	SHEET NO.
7	18-00050-02-BR	DEKALB	14	4
CONTRACT NO			87789	
ILLINOIS FED. AID PROJECT				



S:\PROJECTS\2023\5081D23\_Perry\2220067\CIVIL\PLAN-2220067 - No ROW 4.28.24.dwg



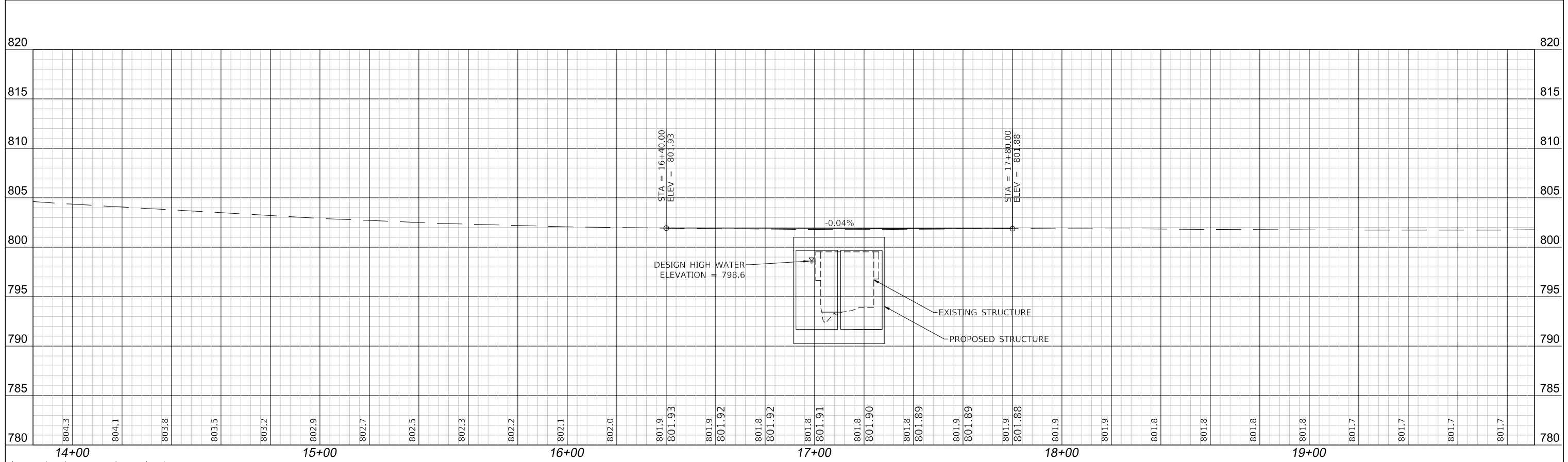
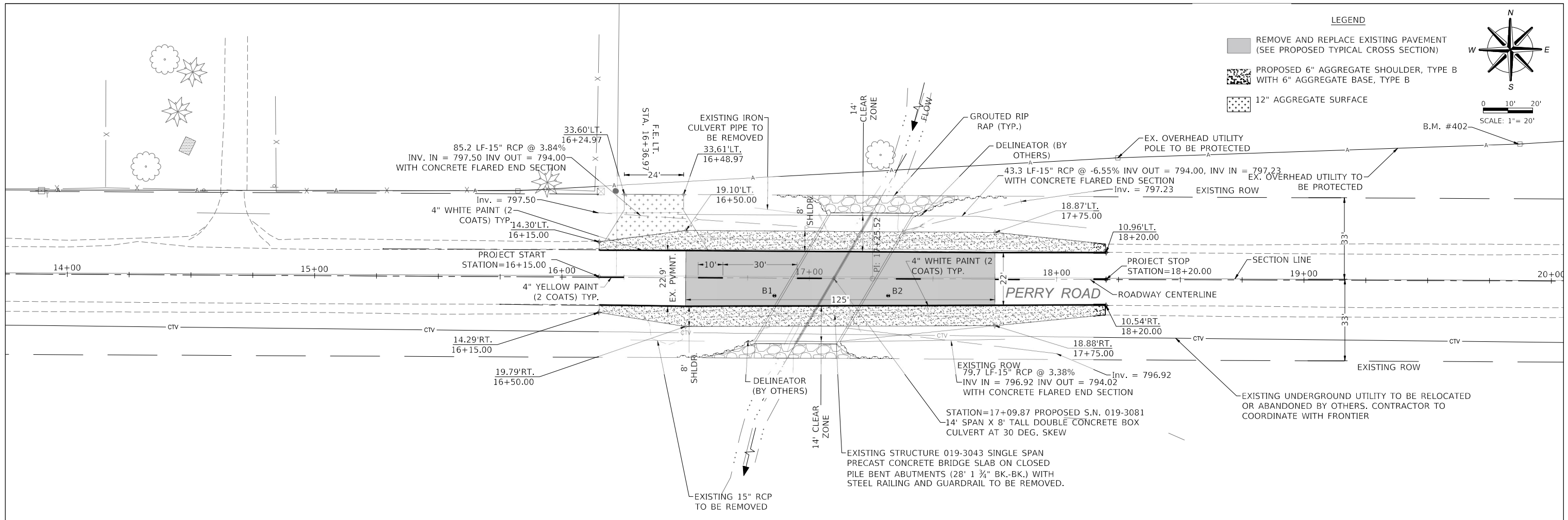
USER NAME = chad clauson	DESIGNED - - CTC	REVISED -
PLOT SCALE = - AS NOTED	DRAWN - - CTC	REVISED -
PLOT DATE = 5/1/24	CHECKED - - SAB	REVISED -
FILE NAME = plan-2220067 - no row 4.28.24.dwg	DATE - - 4/30/2024	REVISED -

**DEKALB COUNTY HIGHWAY DEPARTMENT**

**GRADING PLAN**

SCALE: - SHEET - OF - SHEETS STA. - TO STA. -

CH RTE.	SECTION	COUNTY	TOTAL SHEETS	SHEET NO.
7	18-00050-02-BR	DEKALB	14	5
CONTRACT NO			87789	
ILLINOIS FED. AID PROJECT			-	



S:\PROJECTS\2023\5081D23\_Perry\2220067\CIVIL\PLAN-2220067 - No ROW 4.28.24.dwg

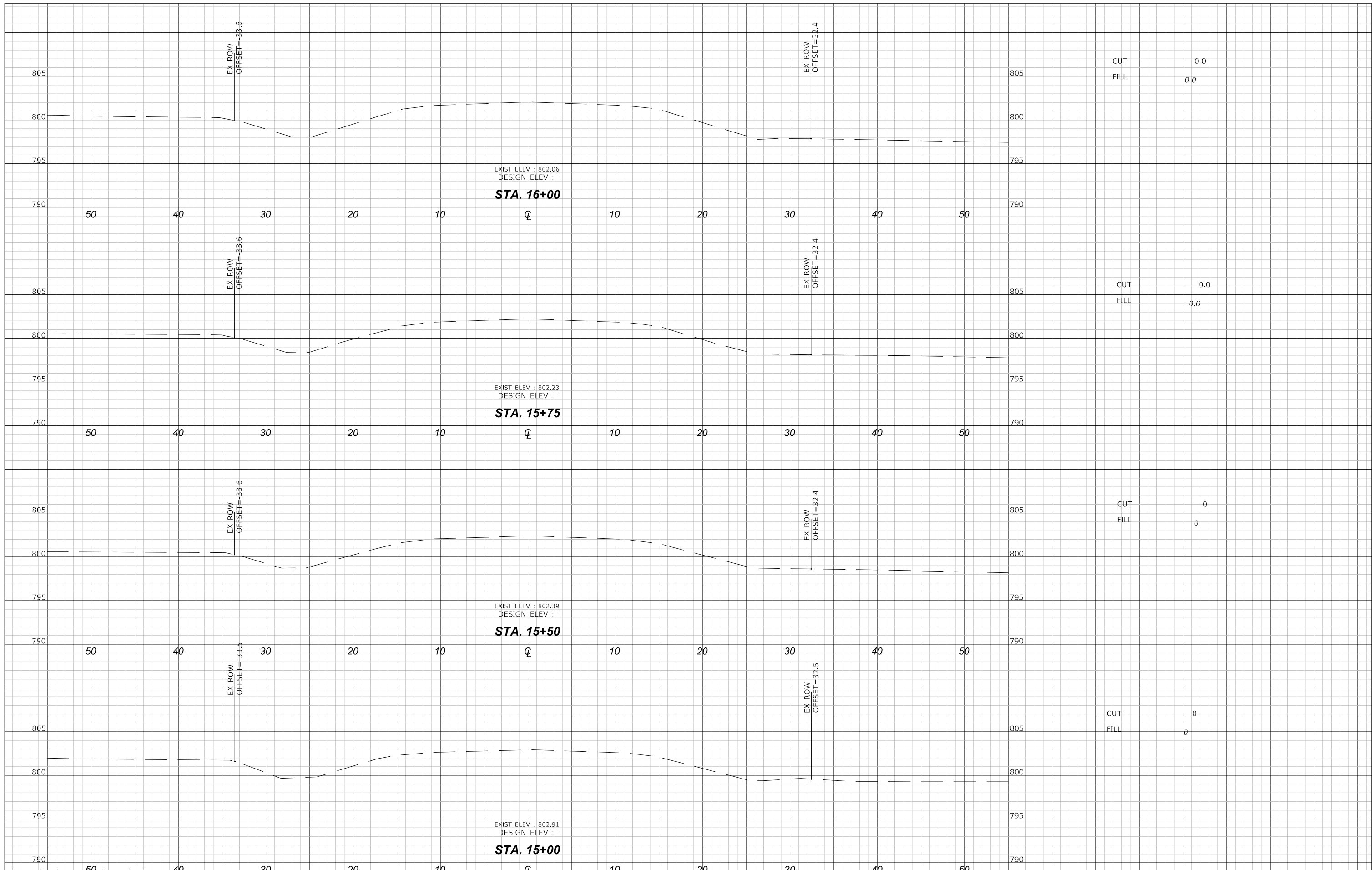


USER NAME = chad clauson	DESIGNED - - CTC	REVISED -
PLOT SCALE = - AS NOTED	DRAWN - - CTC	REVISED -
PLOT DATE = 5/1/24	CHECKED - - SAB	REVISED -
FILE NAME = plan-2220067 - no row 4.28.24.dwg	DATE - - 2/15/2023	REVISED -

**DEKALB COUNTY HIGHWAY DEPARTMENT**

<b>PLAN AND PROFILE</b>	
SCALE: -	SHEET - OF - SHEETS STA. - TO STA. -

CH RTE.	SECTION	COUNTY	TOTAL SHEETS	SHEET NO.
7	18-00050-02-BR	DEKALB	14	6
CONTRACT NO 87789			ILLINOIS FED. AID PROJECT -	



S:\PROJECTS\2023\5081D23\2023\2220067\CIVIL\PLAN-2220067 - No ROW 4.28.24.dwg

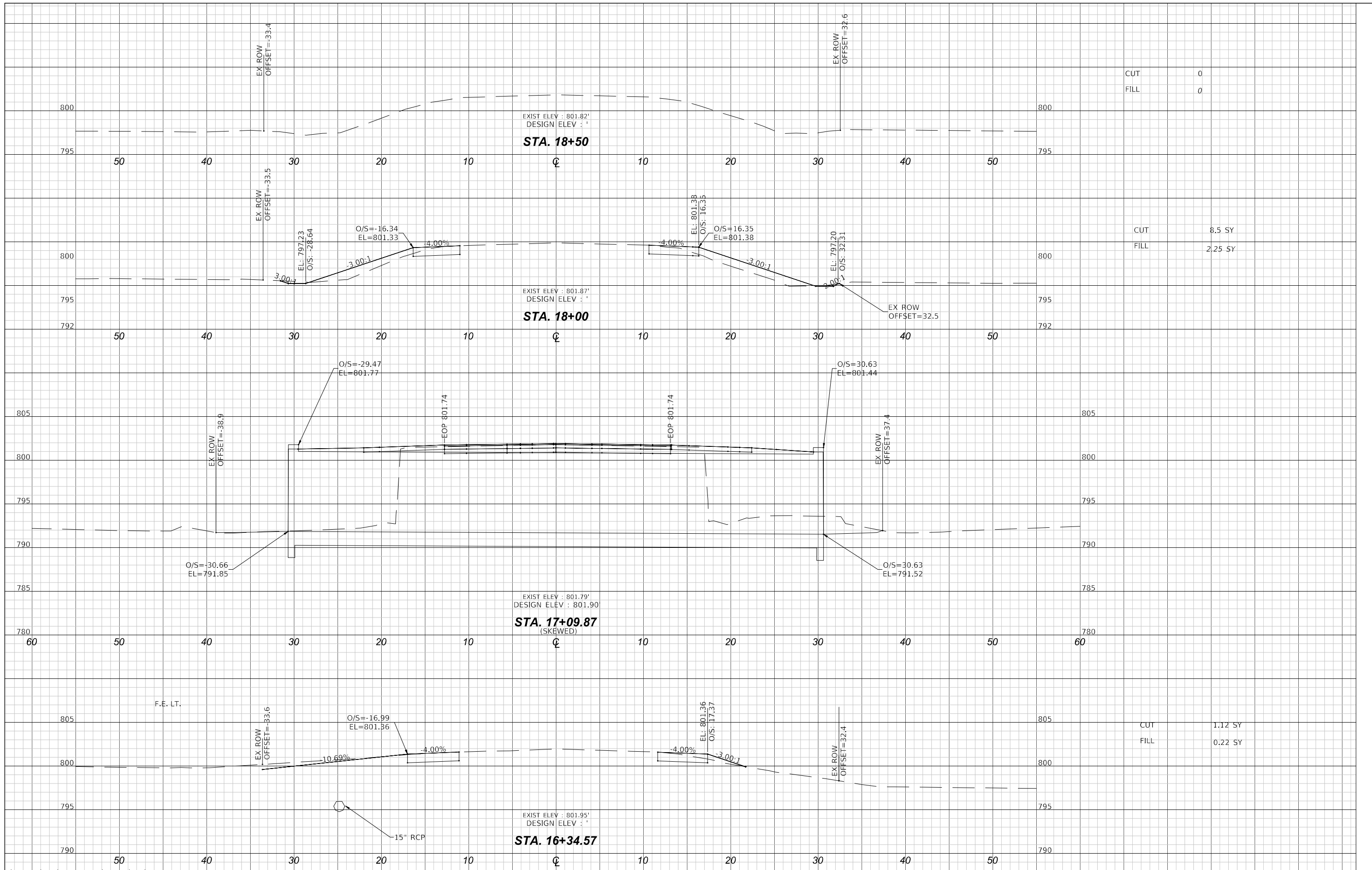


USER NAME = chad clauson	DESIGNED - - CTC	REVISED -
PLOT SCALE = - AS NOTED	DRAWN - - CTC	REVISED -
PLOT DATE = 5/1/24	CHECKED - - SAB	REVISED -
FILE NAME = plan-2220067 - no row 4.28.24.dwg	DATE - - 4/30/2024	REVISED -

**DEKALB COUNTY HIGHWAY DEPARTMENT**

<b>CROSS SECTIONS (1 OF 2)</b>	
SCALE: -	SHEET - OF - SHEETS
STA. -	TO STA. -

CH RTE.	SECTION	COUNTY	TOTAL SHEETS	SHEET NO.
7	18-00050-02-BR	DEKALB	14	7
CONTRACT NO			87789	
ILLINOIS FED. AID PROJECT -				



CUT	0
FILL	0

CUT	8.5 SY
FILL	2.25 SY

CUT	1.12 SY
FILL	0.22 SY

S:\PROJECTS\2023\5081023\_Perry\2220067\CIVIL\PLAN-2220067 - No ROW 4.28.24.dwg



USER NAME = chad clauson	DESIGNED - - CTC	REVISED -
PLOT SCALE = - AS NOTED	DRAWN - - CTC	REVISED -
PLOT DATE = 5/1/24	CHECKED - - SAB	REVISED -
FILE NAME = plan-2220067 - no row 4.28.24.dwg	DATE - 4/30/2024	REVISED -

**DEKALB COUNTY HIGHWAY DEPARTMENT**

**CROSS SECTIONS (2 OF 2)**

SCALE: - SHEET - OF - SHEETS STA. - TO STA. -

CH RTE.	SECTION	COUNTY	TOTAL SHEETS	SHEET NO.
7	18-0050-02-BR	DEKALB	14	8
CONTRACT NO			87789	
ILLINOIS FED. AID PROJECT -				



BRANCH OF BATTLE CREEK  
 BUILT 2024 BY  
 DEKALB COUNTY  
 SECTION 18-00050-02-BR  
 F.A.S. 176  
 STR. NO. 019-3081 - LOADING HL-93

LETTERING FOR NAMEPLATE  
 See Std. 515001-03

**LOADING HL-93**

Design Earth Cover: 1.5 feet  
 Allowed 50 psf for future wearing surface

**DESIGN STRESSES**

$f'_c = 3,500$  psi  
 $f_y = 60,000$  psi

**DESIGN SPECIFICATIONS**

2020 Bridge Design Specifications  
 9th Edition, ASTM C1577

**HIGHWAY CLASSIFICATION**

PERRY ROAD (CH 7)  
 Functional Class: RURAL MINOR COLLECTOR  
 ADT: 2625  
 Design Speed: 55 m.p.h.  
 Regulatory Speed: 55 m.p.h.

**WATERWAY INFORMATION**

Drainage Area = 4.19 square miles  
 Existing Low Grade Elevation = 801.8  
 Proposed Low Grade Elevation = 801.9

Flood	Frequency	Q	Opening Sq. Ft.		Natural	Head-Ft.		Headwater El.	
	Year	(cfs)	Existing	Proposed	H.W.E	Existing	Proposed	Existing	Proposed
Design	30	565	149.8	202.9	798.7	0.2	-0.1	798.9	798.6
Base	100	754	158.9	212.3	798.9	0.5	0.1	799.4	799.0

**GENERAL NOTES**

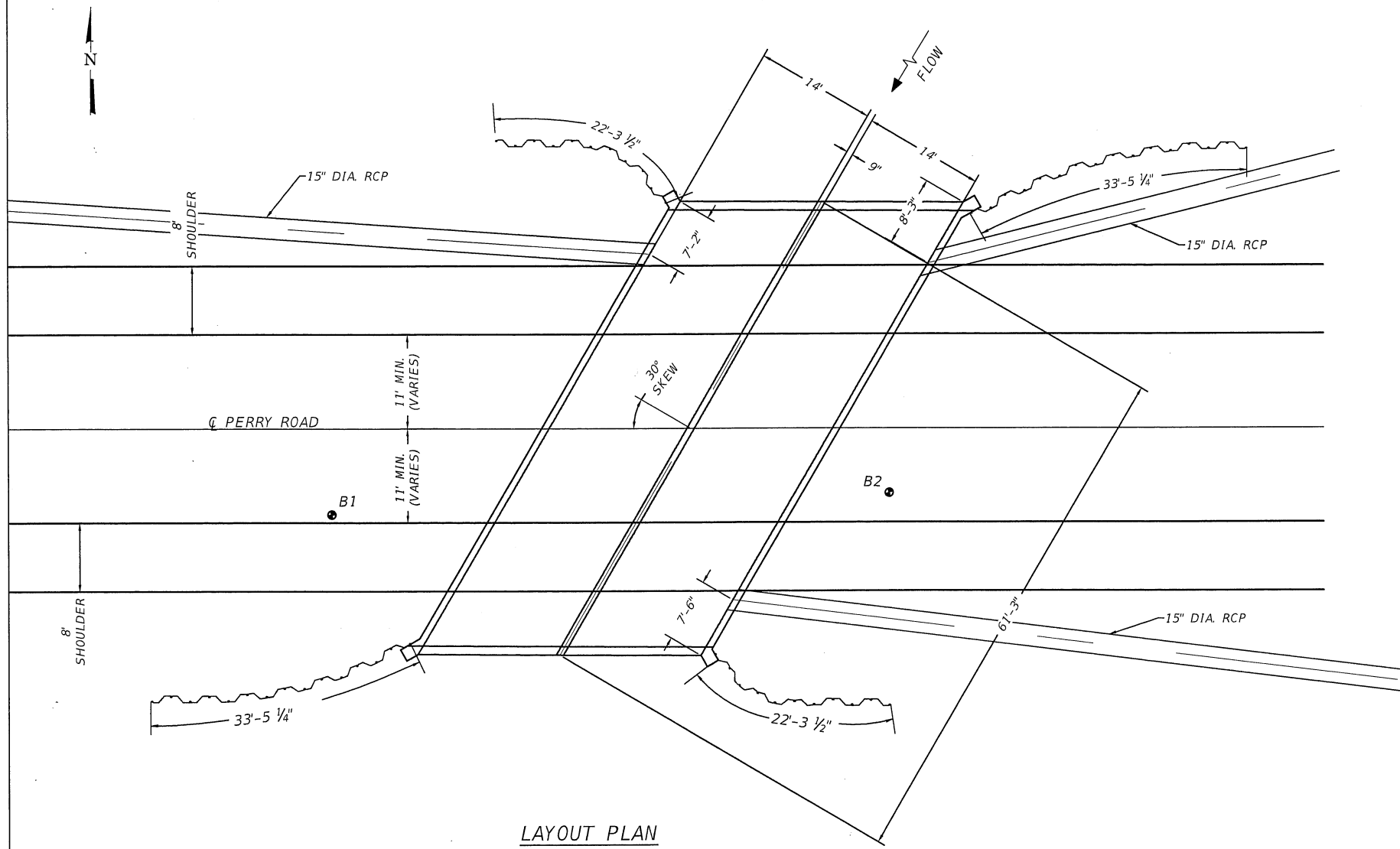
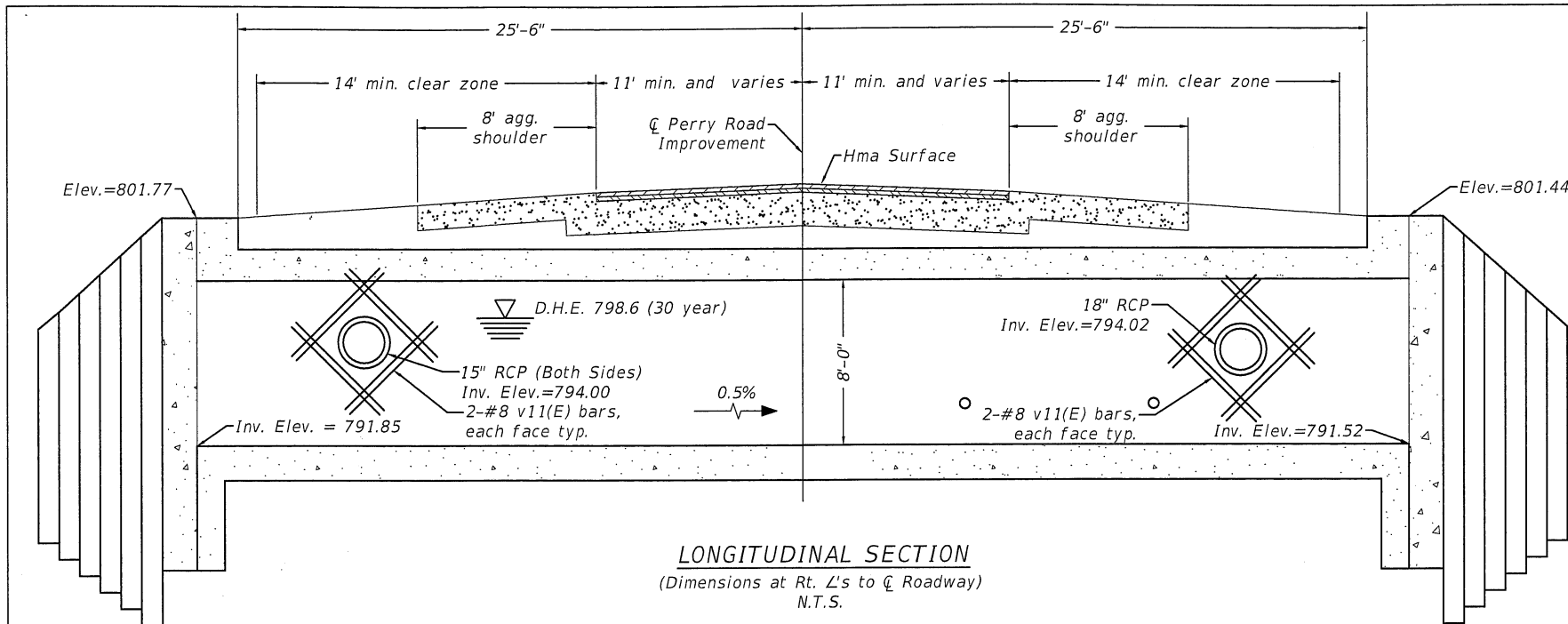
- Exposed edges shall be beveled  $\frac{3}{4}$ "
- Reinforcement bars shall conform to the requirements of AASHTO M-31, M-42 or M-53, Grade 60
- All reinforcement bars shall be epoxy coated.
- For backfilling and embankment, see standard specifications.
- A deposit of gravel or broken stone shall be placed behind drain holes in accordance with article 503.11 of the standard specifications. A double layer of geotechnical filter fabric shall be placed against the drain hole and around the deposit to prevent leakage of backfill material through the 3" diameter opening. Filter fabric shall be in accordance with Section 282 of the standard specifications, with the exception that under method of measurement and basis of payment, this item will be considered included in the cost of the concrete box culvert.
- All sheet piling to be hot-dip galvanized in accordance with ASTM A 123 at a rate of 2.0 ounces per square foot (total both sides).

WILLETT HOFMANN &  
 ASSOCIATES INC.  
 Illinois Professional Design  
 Firm No. 184-000918-0015



I CERTIFY THAT TO THE BEST OF MY KNOWLEDGE, INFORMATION AND BELIEF, THIS BRIDGE/BOX CULVERT DESIGN IS STRUCTURALLY ADEQUATE FOR THE DESIGN LOADING SHOWN ON THE PLANS. THE DESIGN IS AN ECONOMICAL ONE FOR THE STYLE OF STRUCTURE AND COMPLIES WITH REQUIREMENTS OF THE CURRENT "AASHTO LRFD SPECIFICATIONS FOR HIGHWAY BRIDGES".

DATE 5/1/24  
 SCOTT A. BROWN  
 DIXON, ILLINOIS  
 ILLINOIS LICENSED STRUCTURAL  
 ENGINEER NO. 081-005981  
 EXPIRES 11-30-2024



S:\PROJECTS\2023\5081023\_Perry\2220067\CIVIL\STRUCTURE - 2220067.dwg



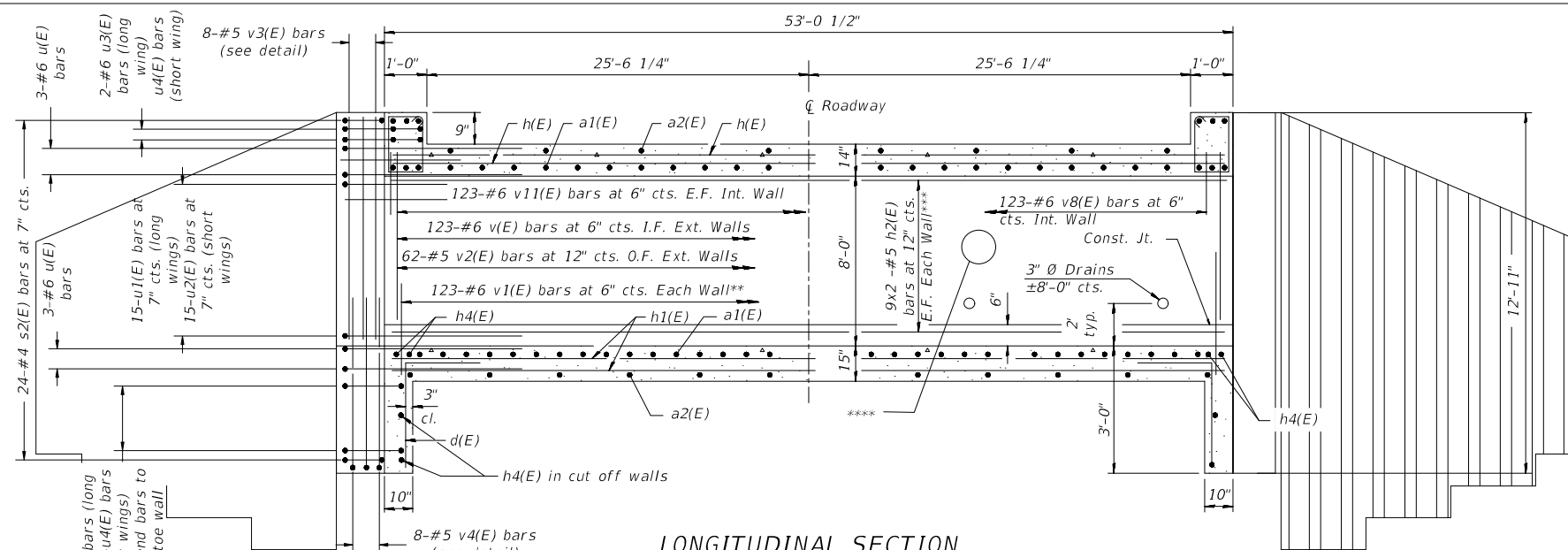
USER NAME = chad olson	DESIGNED - - CTC	REVISED -
PLOT SCALE = - AS NOTED	DRAWN - - CTC	REVISED -
PLOT DATE = 5/1/24	CHECKED - - SAB	REVISED -
FILE NAME = structure - 2220067.dwg	DATE - - 4/30/2024	REVISED -

DEKALB COUNTY HIGHWAY DEPARTMENT

GENERAL PLAN AND ELEVATION

SCALE: - SHEET - OF - SHEETS STA. - TO STA. -

CH RTE.	SECTION	COUNTY	TOTAL SHEETS	SHEET NO.
7	18-00050-02-BR	DEKALB	14	9
CONTRACT NO.				87789
ILLINOIS FED. AID PROJECT				



**LONGITUDINAL SECTION**

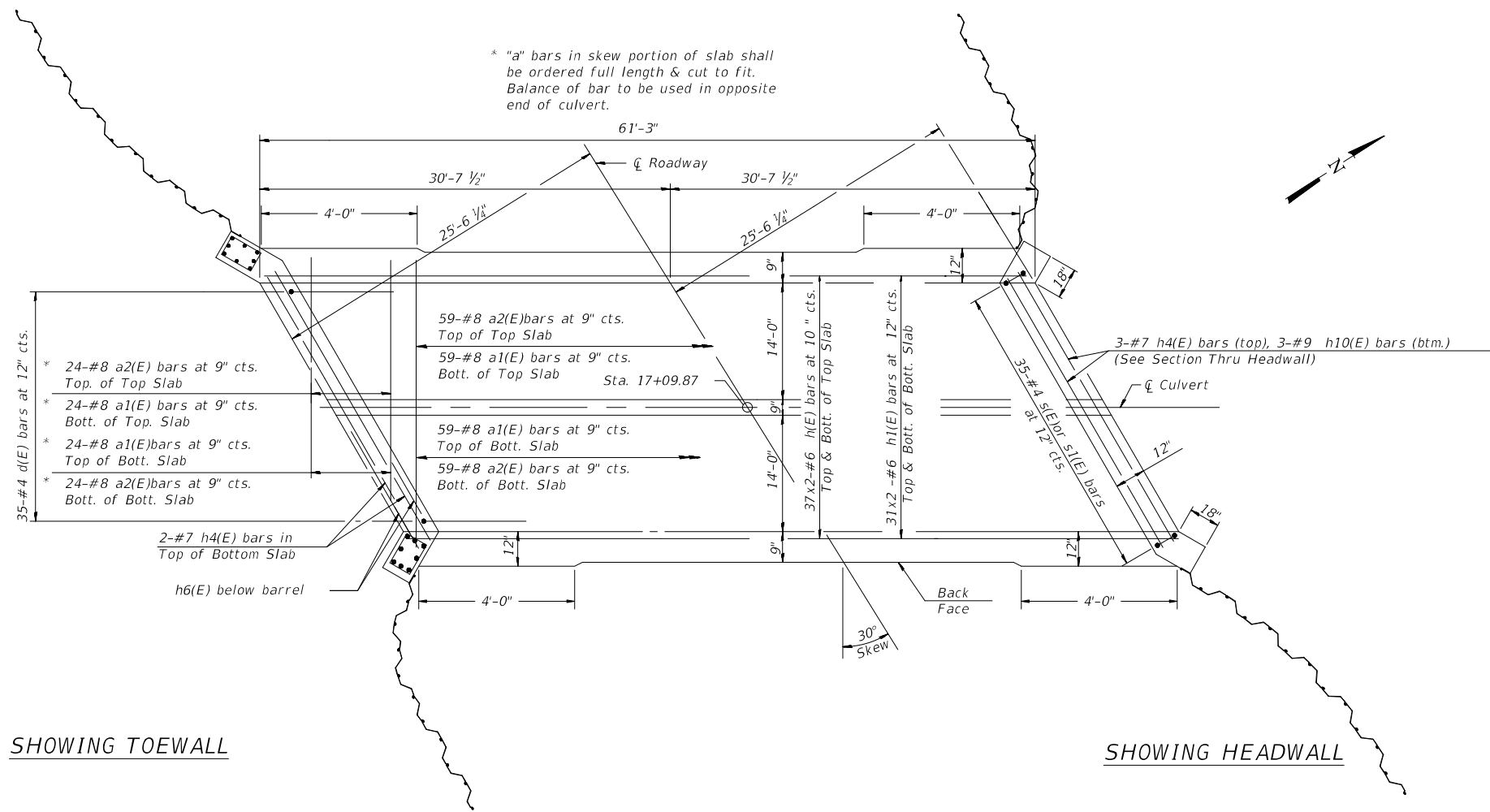
(Dimensions at Rt. L's to  $\bar{C}$  Roadway)

\*\*See box cross section for v1(E) location  
 \*\*\*Cut h2(E) bars in field as needed for pipe culvert openings  
 \*\*\*\*See GP&E Longitudinal Section for pipe penetration reinforcement

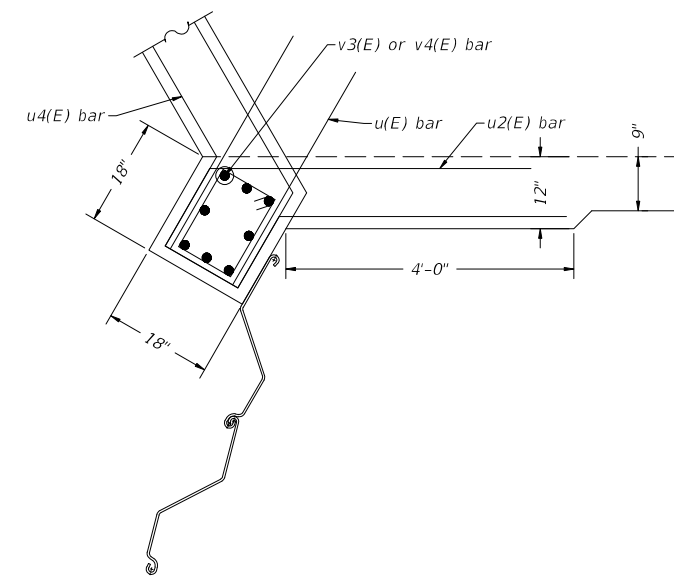
**Minimum lap lengths**

#5 bar = 3'-4"  
 #6 bar = 4'-9"

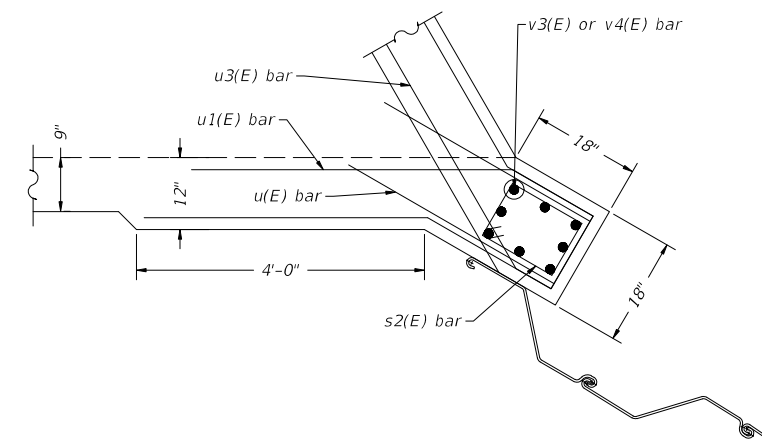
\* "a" bars in skew portion of slab shall be ordered full length & cut to fit. Balance of bar to be used in opposite end of culvert.



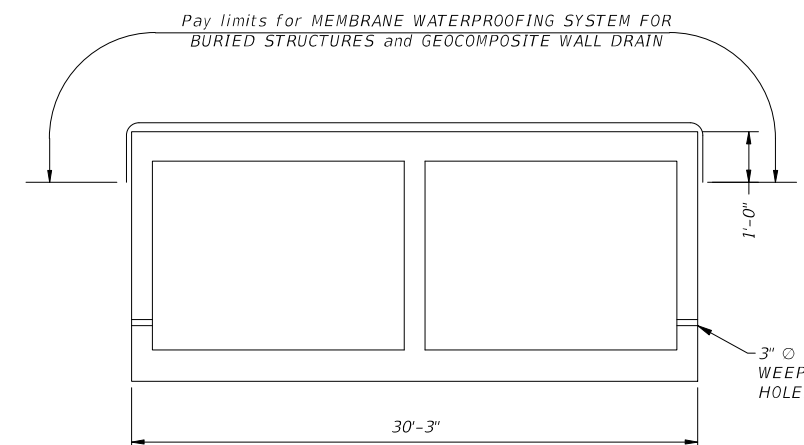
**PLAN**



**SHORT WINGWALL CONNECTION DETAIL**



**LONG WINGWALL CONNECTION DETAIL**

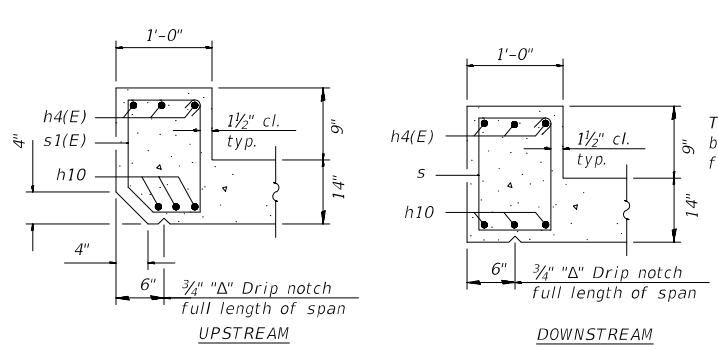


**WATERPROOFING MEMBRANE SYSTEM DETAIL**

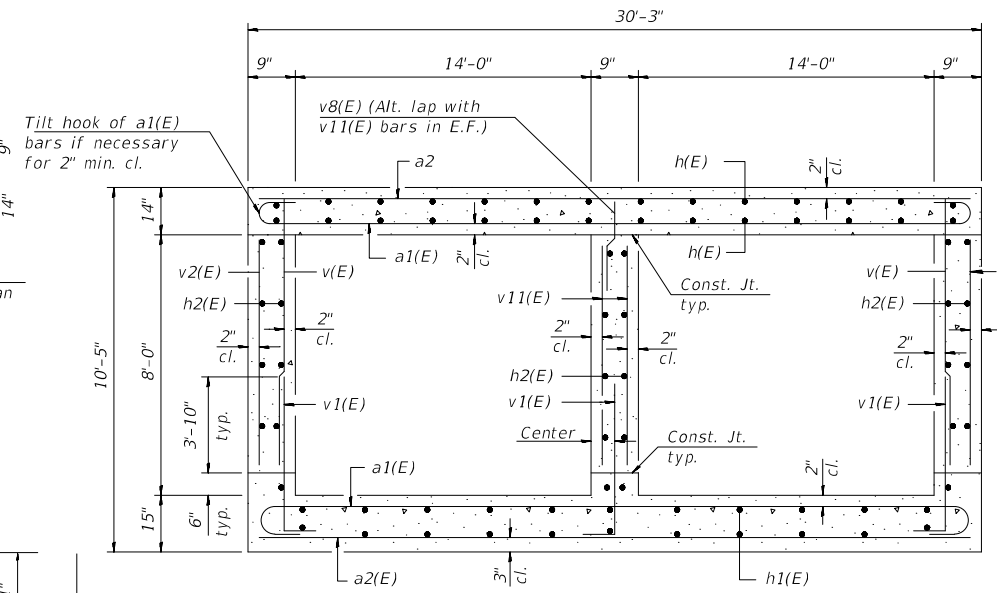
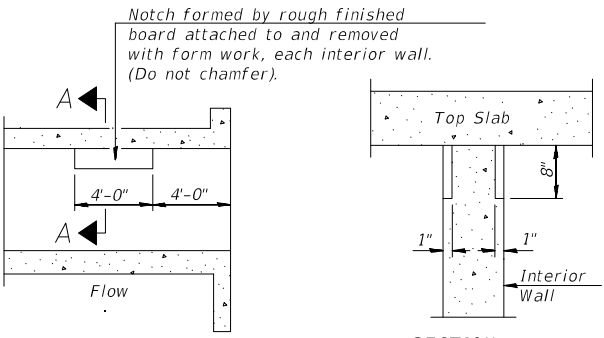
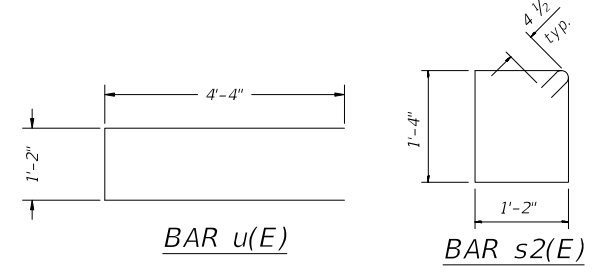
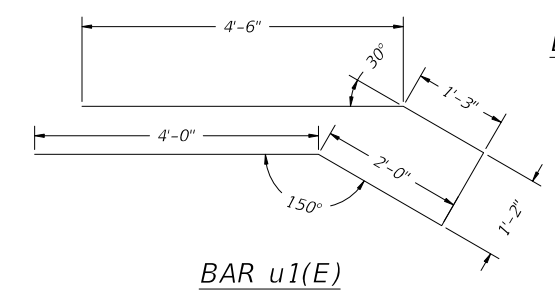
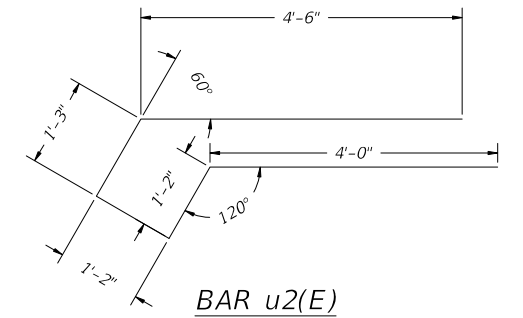
Notes:  
 Bars indicated thus 12 x 4-#5 etc. indicates 12 lines of bars with 4 lengths per line.  
 At the Contractor's option, a longer v1(E) bar may be ordered to replace the v bar.  
 No reduction in quantities shall be made for this substitution.  
 E.F. = Each Face I.F. = Inside Face O.F. = Outside Face B.F. = Back Face F.F. = Front Face

USER NAME = chad clauson	DESIGNED - - CTC	REVISED -
PLOT SCALE = - AS NOTED	DRAWN - - CTC	REVISED -
PLOT DATE = 5/1/24	CHECKED - - SAB	REVISED -
FILE NAME = structure - 2220067.dwg	DATE - - 4/30/2024	REVISED -

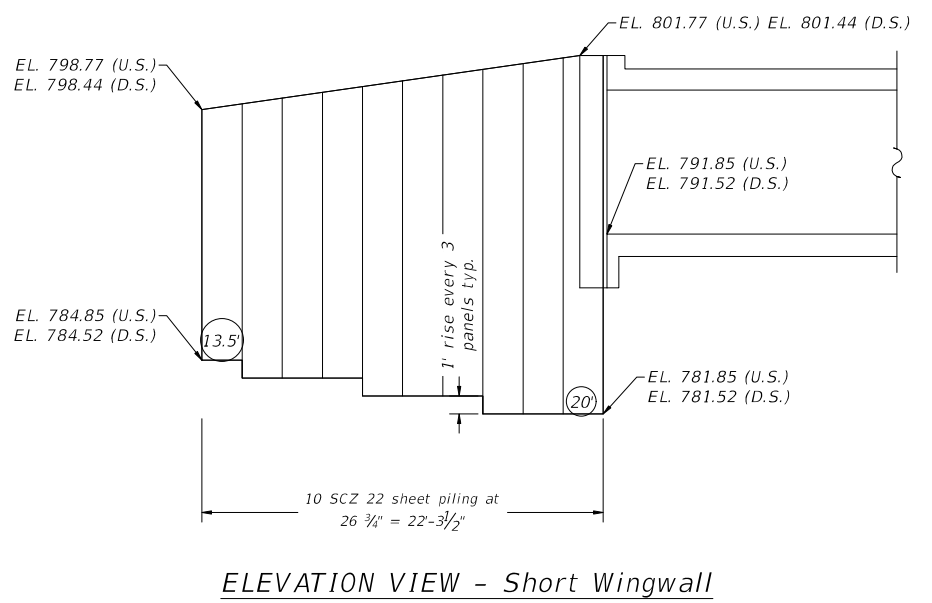
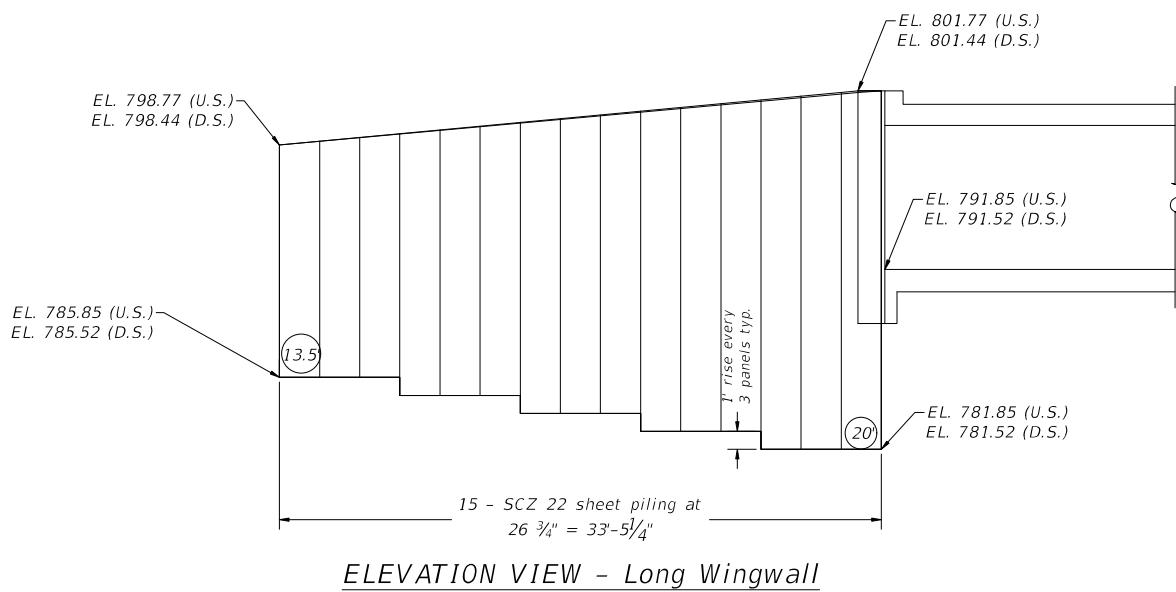
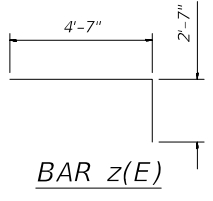
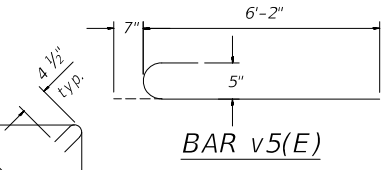
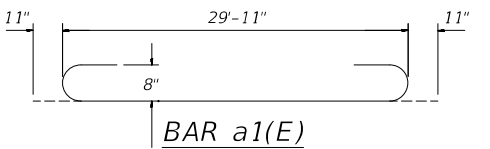
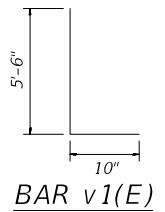
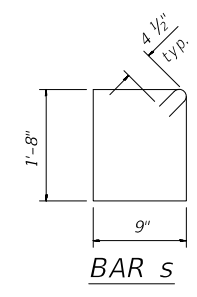
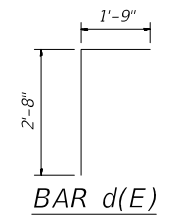
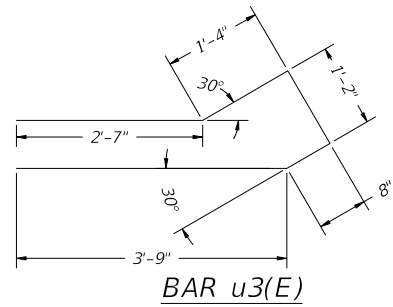
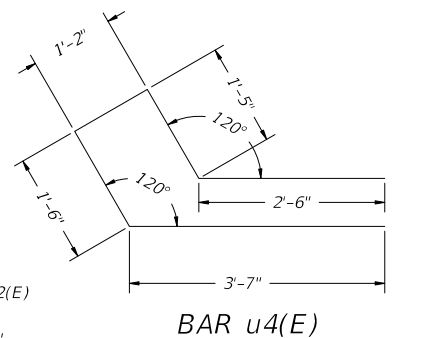
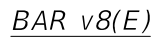
CH RTE.	SECTION	COUNTY	TOTAL SHEETS	SHEET NO.
7	18-0050-02-BR	DEKALB	14	10
CONTRACT NO			87789	
ILLINOIS FED. AID PROJECT				



SECTION THRU HEADWALL



SECTION THRU BARREL



BILL OF MATERIAL

Bar	No.	Size	Length	Shape
a1(E)	166	#8	31'-9"	
a2(E)	166	#8	29'-11"	
d(E)	70	#4	4'-5"	
h(E)	148	#6	32'-10"	
h1(E)	124	#6	32'-10"	
h2(E)	108	#5	32'-2"	
h4(E)	14	#7	33'-6"	
h10(E)	6	#9	34'-6"	
s(E)	35	#4	5'-7"	
s1(E)	35	#4	5'-6"	
s2(E)	96	#4	5'-9"	
u(E)	24	#6	9'-10"	
u1(E)	30	#4	12'-11"	
u2(E)	30	#4	12'-11"	
u3(E)	10	#4	9'-6"	
u4(E)	10	#4	10'-2"	
v(E)	246	#6	8'-4"	
v1(E)	369	#6	6'-4"	
v2(E)	124	#5	7'-2"	
v3(E)	32	#5	9'-7"	
v4(E)	32	#5	6'-4"	
v8(E)	123	#6	5'-0"	
v10(E)	48	#8	4'-0"	
v11(E)	246	#8	8'-4"	
<b>CONCRETE BOX CULVERTS</b> CU. YD. 218.3				
<b>REINFORCEMENT BARS</b> POUND 62,810				
<b>MEMBRANE WATERPROOFING SYSTEM FOR BURIED STRUCTURES</b> SQ YD 213				
<b>GEOCOMPOSITE WALL DRAIN</b> SQ YD 213				
<b>PERMANENT SHEET PILING</b> SQ FT 1,869				

U.S. = UPSTREAM  
D.S. = DOWNSTREAM

S:\PROJECTS\2023\5081D23\_Perry\2220067\CIVIL\STRUCTURE - 2220067.dwg

USER NAME = chad clauson	DESIGNED - - CTC	REVISED -
PLOT SCALE = - AS NOTED	DRAWN - - CTC	REVISED -
PLOT DATE = 5/1/24	CHECKED - - SAB	REVISED -
FILE NAME = structure - 2220067.dwg	DATE - - 4/30/2024	REVISED -

DEKALB COUNTY HIGHWAY DEPARTMENT

CULVERT DETAILS (2 OF 2)

SCALE: - SHEET - OF - SHEETS STA. - TO STA. -

CH RTE.	SECTION	COUNTY	TOTAL SHEETS	SHEET NO.
7	18-00050-02-BR	DEKALB	14	11
CONTRACT NO 87789				
ILLINOIS FED. AID PROJECT				





PHONE 815/223-6696

Midwest Testing Services, Inc.  
3705 Progress Boulevard Peru, Illinois 61354

SHEET 1 OF 3

BORING LOG

BORING NO. 2 PROJECT Section 89-00050-01-BR; DeKalb County  
LOCATION 7' South of Centerline of Road & 22' East of Center of Bridge  
GROUND WATER, BAR - AAR 85.0 SEEPAGE ENCOUNTERED @ 85.0 DATE COMPLETED October 21, 1989

Table with columns: (DEPTH) ELEV., DESCRIPTION, SAMPLE NO., TYPE, N, Qu, T.S.F., WC, Qu, T.S.F. (0-10). Includes soil descriptions like 'STIFF TO MEDIUM BROWN & GRAY GRAVELY LOAM & SILTY CLAY (Fill)' and 'STIFF BROWN SILTY CLAY'. Includes a scale for STANDARD PENETRATION BLOWS/12" and NATURAL WATER CONTENT %.

PHONE 815/223-6696

Midwest Testing Services, Inc.  
3705 Progress Boulevard Peru, Illinois 61354

SHEET 2 OF 3

BORING LOG

BORING NO. 2 PROJECT Section 89-00050-01-BR; DeKalb County  
LOCATION 7' South of Centerline of Road & 22' East of Center of Bridge  
GROUND WATER, BAR - AAR 85.0 SEEPAGE ENCOUNTERED @ 85.0 DATE COMPLETED October 21, 1989

Table with columns: (DEPTH) ELEV., DESCRIPTION, SAMPLE NO., TYPE, N, Qu, T.S.F., WC, Qu, T.S.F. (0-10). Includes soil descriptions like 'VERY STIFF TO STIFF BROWN & GRAY SILTY CLAY LOAM TILL' and 'MEDIUM TO LOOSE GRAY FINE TO COARSE SUB-ANGULAR CLEAN SAND'. Includes a scale for STANDARD PENETRATION BLOWS/12" and NATURAL WATER CONTENT %.

PHONE 815/223-6696

Midwest Testing Services, Inc.  
3705 Progress Boulevard Peru, Illinois 61354

SHEET 3 OF 3

BORING LOG

BORING NO. 2 PROJECT Section 89-00050-01-BR; DeKalb County  
LOCATION 7' South of Centerline of Road & 22' East of Center of Bridge  
GROUND WATER, BAR - AAR 85.0 SEEPAGE ENCOUNTERED @ 85.0 DATE COMPLETED October 21, 1989

Table with columns: (DEPTH) ELEV., DESCRIPTION, SAMPLE NO., TYPE, N, Qu, T.S.F., WC, Qu, T.S.F. (0-10). Includes soil descriptions like 'STIFF GRAY CLAY' and 'VERY STIFF GRAY SILTY LOAM TILL'. Includes a scale for STANDARD PENETRATION BLOWS/12" and NATURAL WATER CONTENT %.



Table with columns: USER NAME, PLOT SCALE, PLOT DATE, FILE NAME, DESIGNED, DRAWN, CHECKED, DATE, REVISED. Values include: chad clauson, AS NOTED, 5/1/24, structure - 2220067.dwg, CTC, CTC, SAB, 4/30/2024.

DEKALB COUNTY HIGHWAY DEPARTMENT

BORINGS (2 OF 2)

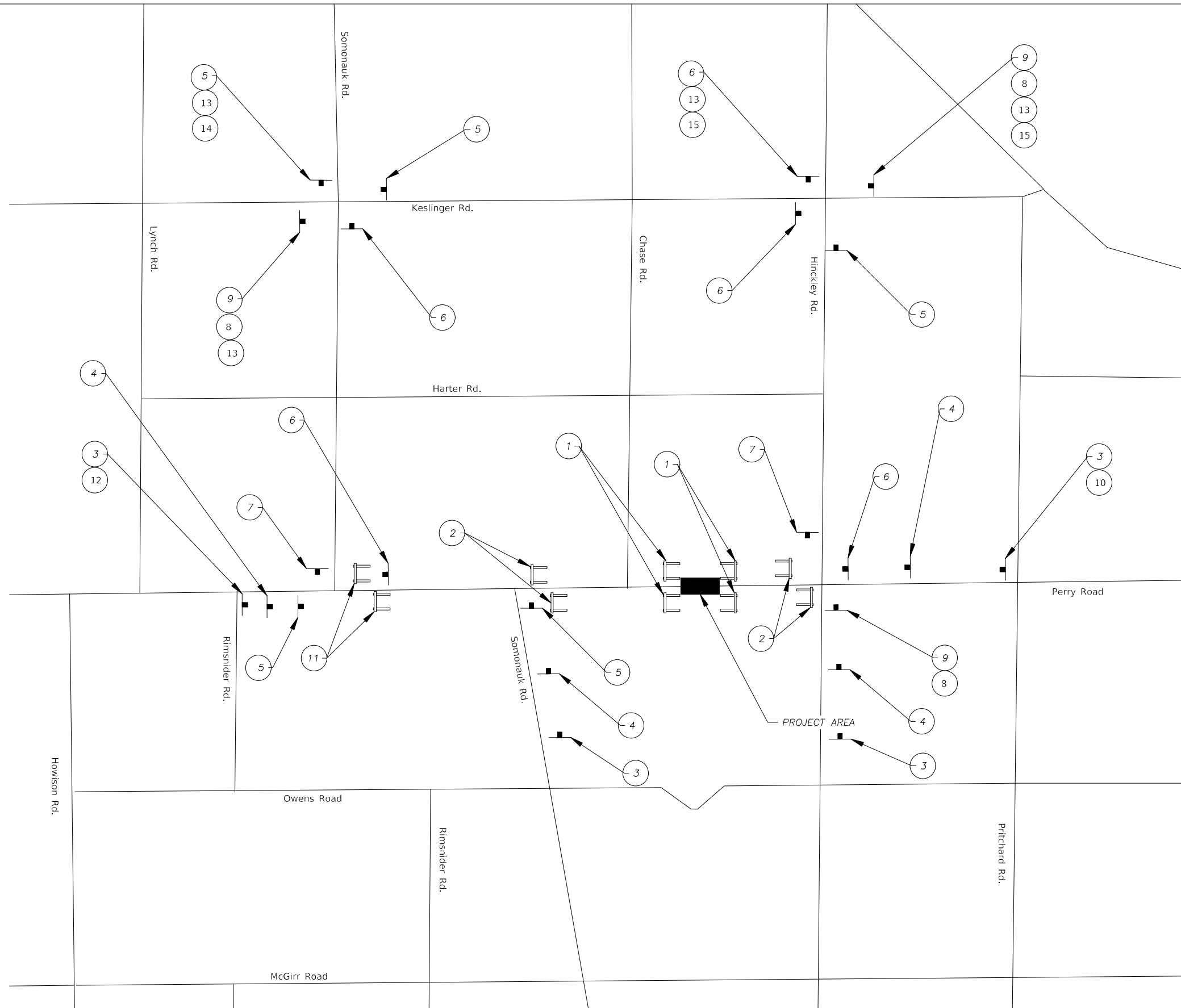
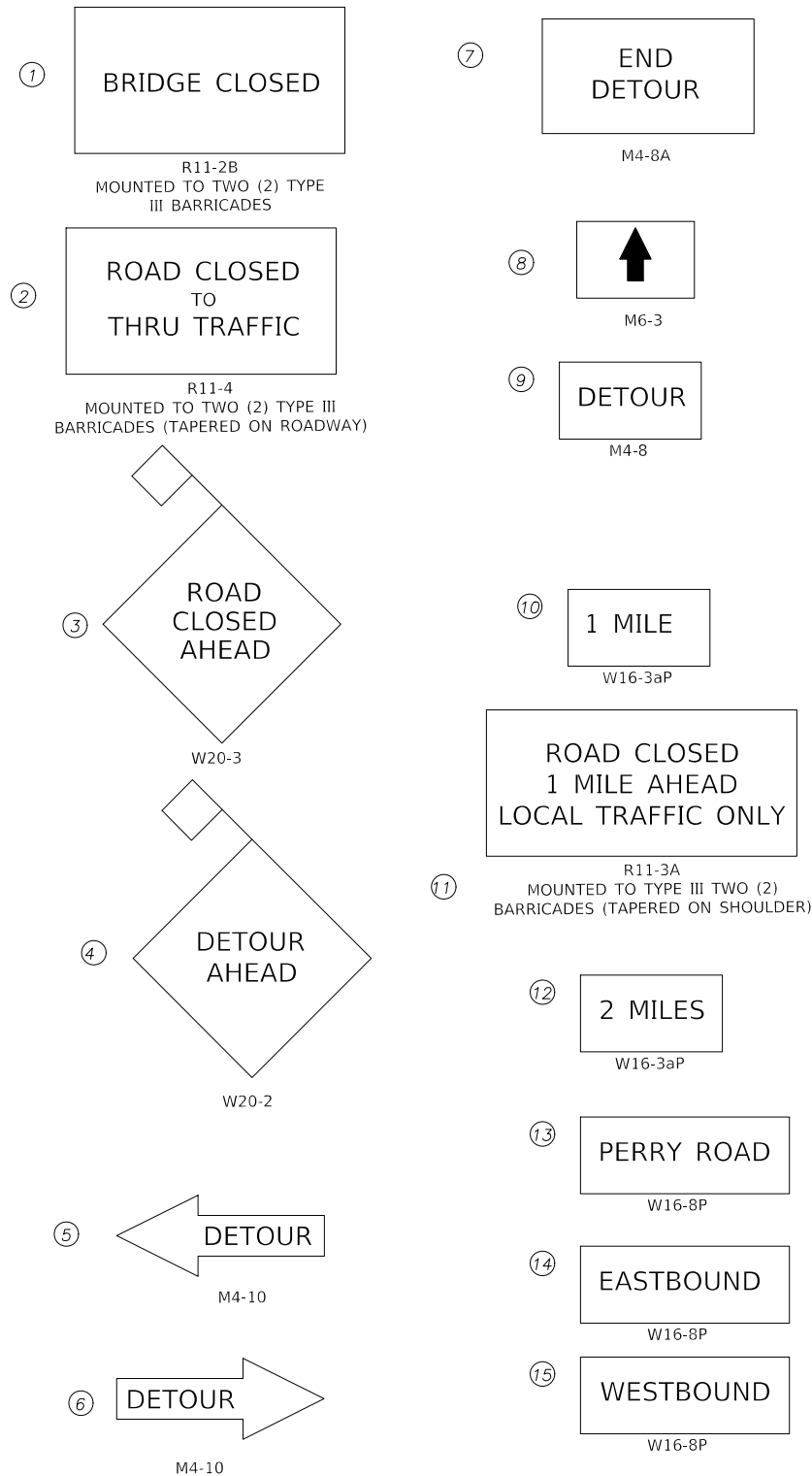
SCALE: - SHEET - OF - SHEETS STA. - TO STA. -

Table with columns: CH RTE., SECTION, COUNTY, TOTAL SHEETS, SHEET NO., CONTRACT NO. Values include: 7, 18-00050-02-BR, DEKALB, 14, 13, 87789.

ILLINOIS FED. AID PROJECT

NOTES:

- TRAFFIC CONTROL SHALL BE IN ACCORDANCE WITH B.L.R. 21
- ALL TRAFFIC CONTROL SIGNS MUST BE IN PLACE PRIOR TO ROAD CLOSURE
- CONTRACTOR SHALL NOTIFY COUNTY AT LEAST TWO WEEKS PRIOR TO ROAD CLOSURE. CONTRACTOR MUST RECEIVE WRITTEN APPROVAL FROM THE COUNTY PRIOR TO ROAD CLOSURE.
- ALL SIGNS AND BARRICADES SHALL MEET THE REQUIREMENTS OF HIGHWAY STANDARD 701901
- ALL WARNING SIGNS SHALL HAVE A MINIMUM DIMENSIONS OF 48X48 AND HAVE A BLACK LEGEND ON AN ORANGE REFLECTORIZED BACKGROUND
- TYPE III BARRICADES SHALL BE POSITIONED AS SHOWN IN THE "TYPICAL APPLICATIONS OF TYPE III BARRICADES CLOSING A ROAD" DETAIL ON HIGHWAY STANDARD 701901.
- ALL WARNING SIGNS SHALL HAVE FLASHING LIGHTS.



S:\PROJECTS\2023\5081D23\_Perry\2220067\CIVIL\COVER - 2220067.dwg



USER NAME = chad clauson	DESIGNED - -	REVISED -
PLOT SCALE = -	DRAWN - -	REVISED -
PLOT DATE = 5/1/24	CHECKED - -	REVISED -
FILE NAME = cover - 2220067.dwg	DATE - -	REVISED -

**DEKALB COUNTY HIGHWAY DEPARTMENT**

**DETOUR PLAN**

SCALE: - SHEET - OF - SHEETS STA. - TO STA. -

CH RTE.	SECTION	COUNTY	TOTAL SHEETS	SHEET NO.
7	18-00050-02-BR	DEKALB	14	14
CONTRACT NO			87789	
ILLINOIS FED. AID PROJECT			-	