



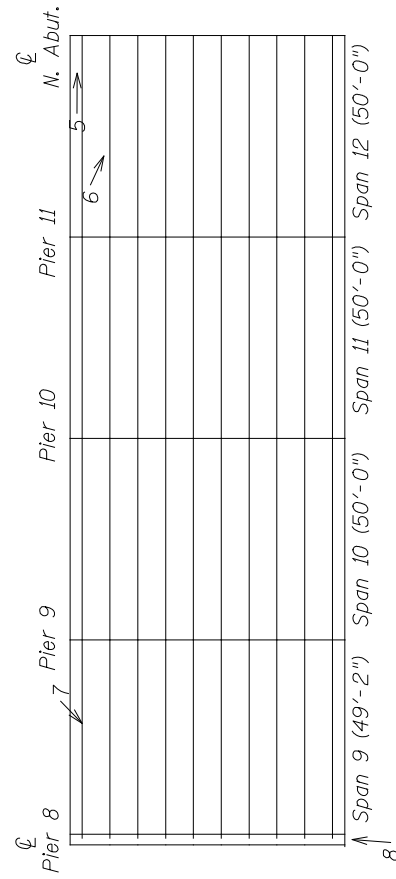
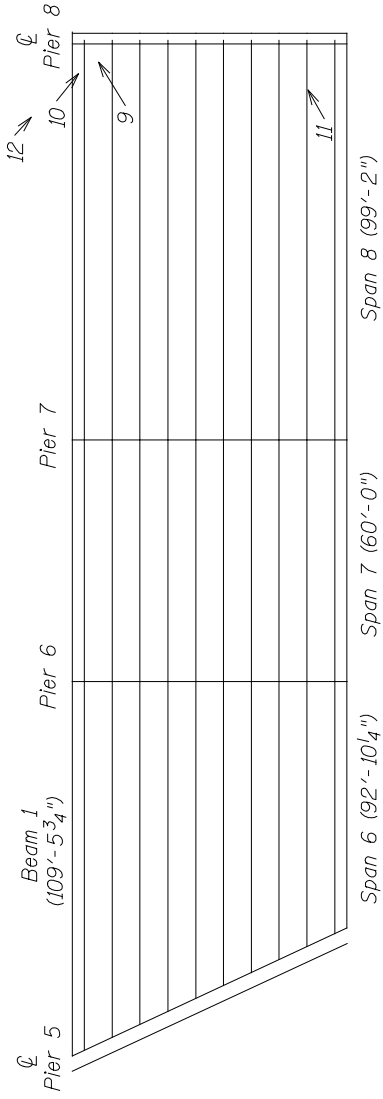
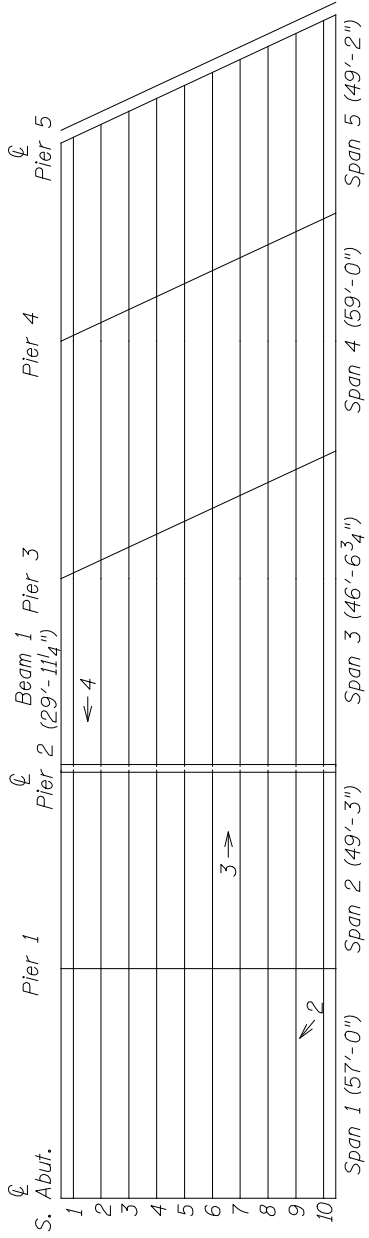
Structure Number: 016-0195 District: 1 Date: 02/24/2014
 Carried/Crossed: IL-1/IHB RR Proposed Year of Improvement: 2014
 Inspection Date: 06/26/2013 Inspector(s): WAB Reviewed by: BKR/WAB

Initial NBIS Ratings				Recommended NBIS Ratings			
58	59	60	62	58	59	60	62
6	5	3	-	6	5	3	-

Remarks: 12 Span Steel (2 Span Continuous Wide Flange; 3 Span Continuous Wide Flange; 3 Span Continuous Welded Plate Girder; 4 Span Continuous Wide Flange) w/RC Deck. The abutments have vertical cracking, delamination and spalling with reinforcement exposed. Pier 8 has spalling with bars exposed.

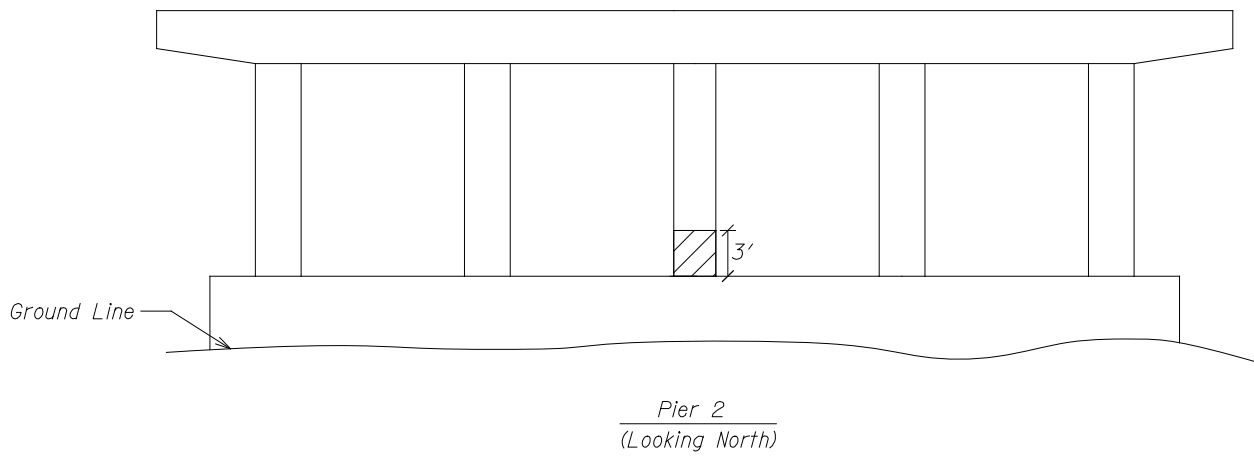
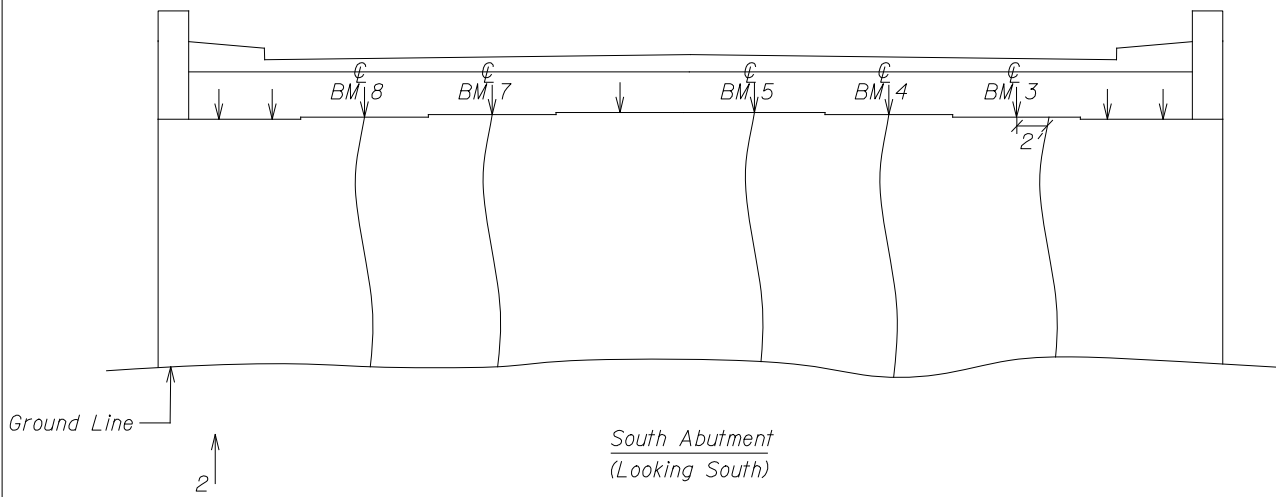
Forwarded to: SMS Date: _____

Additional Comments:



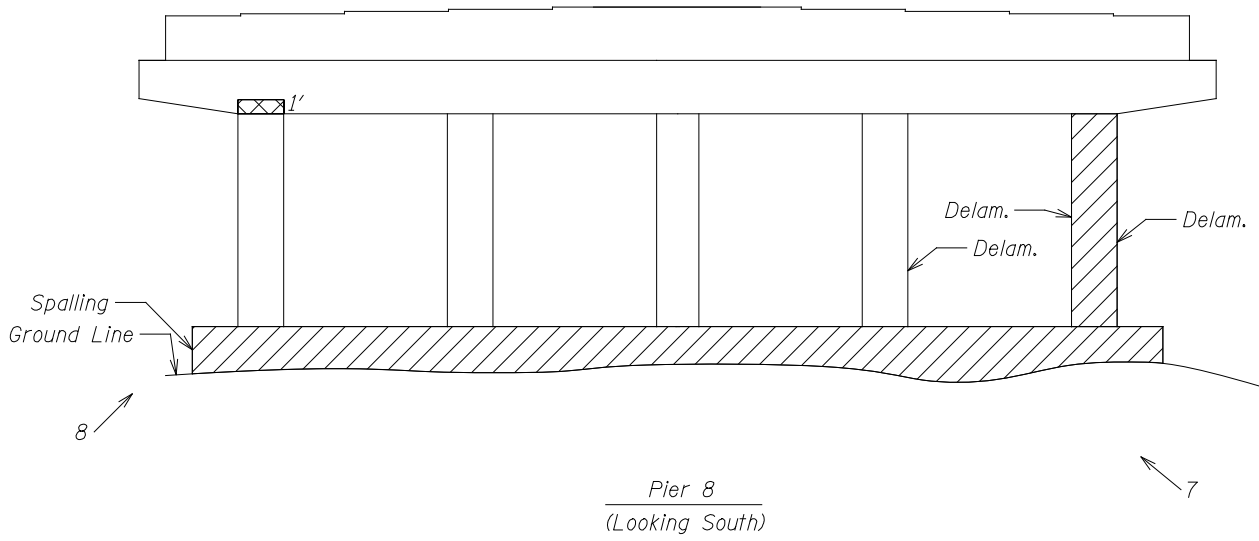
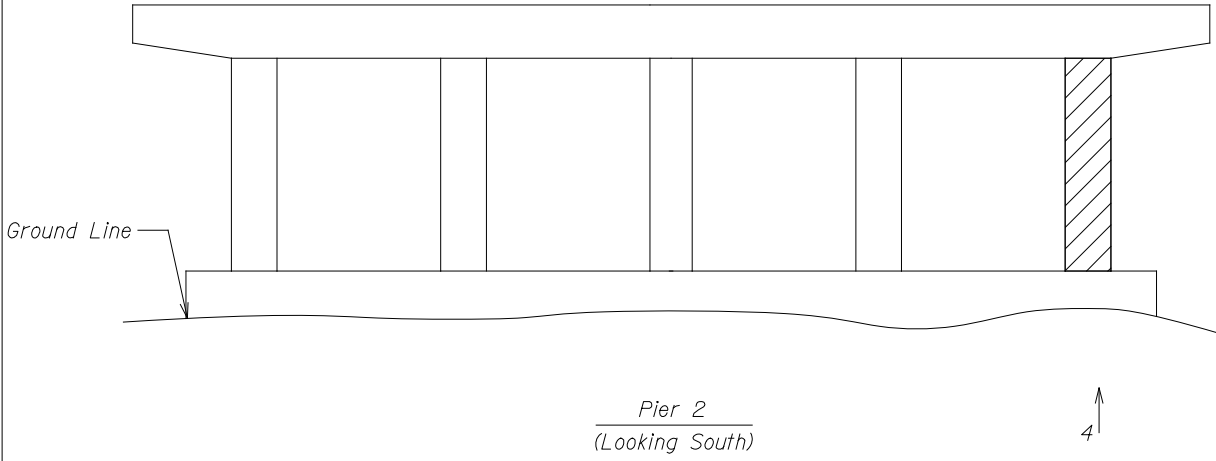
Photos
 1) Structure Number
 → Direction and # of Photo

016-0195
D1
06/26/13

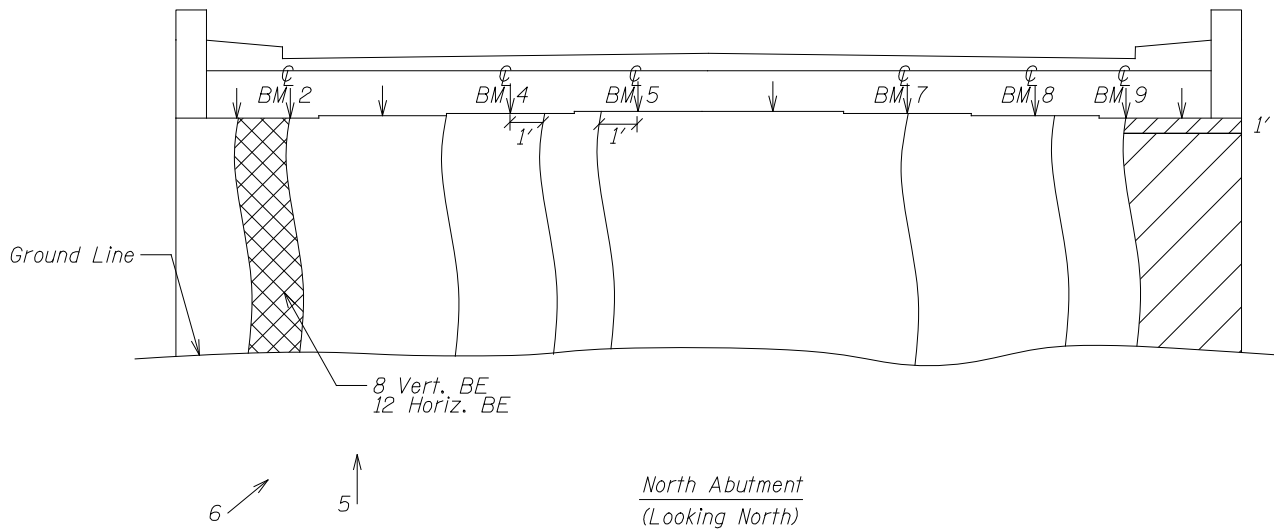
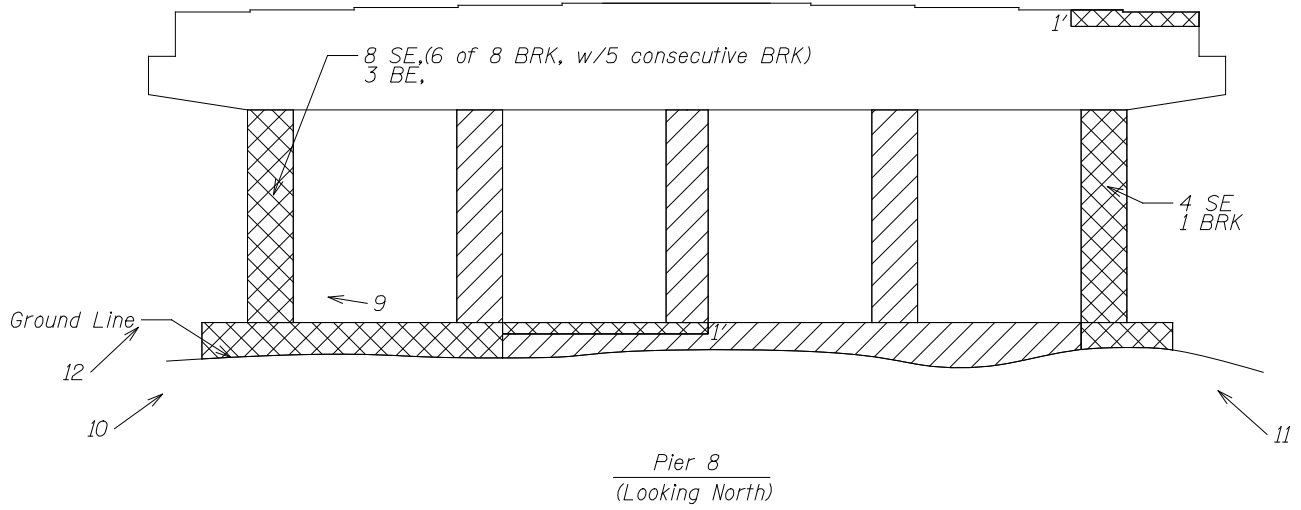


- ▨ Delamination
- ▣ Spalling with Stirrups Exposed (SE),
Broke (BRK), and/or Bars Exposed (BE)

016-0195
D1
06/26/13



016-0195
D1
06/26/13



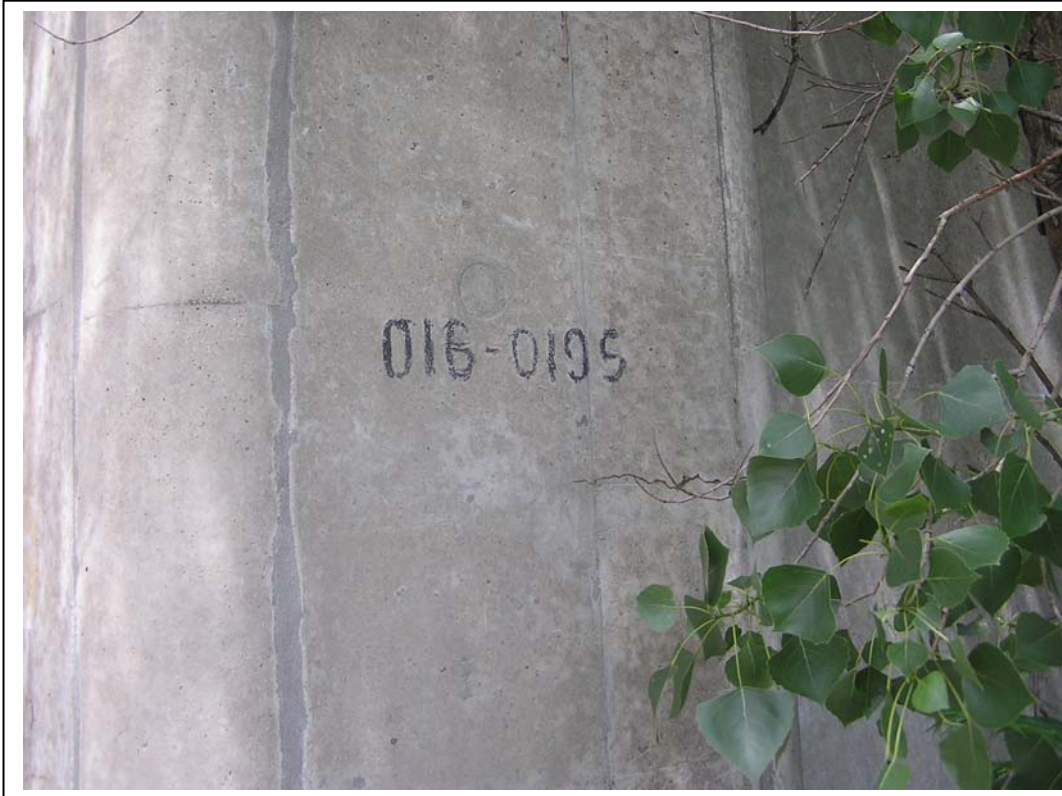


PHOTO 1



PHOTO 2



PHOTO 3



PHOTO 4



PHOTO 5



PHOTO 6



PHOTO 7



PHOTO 8



PHOTO 9



PHOTO 10



PHOTO 11



PHOTO 12