

STATE OF ILLINOIS
 DEPARTMENT OF TRANSPORTATION
 DIVISION OF HIGHWAYS

**PROPOSED
 HIGHWAY PLANS**

VARIOUS ROUTES
 SECTION D 6 HT PVMNT MRK RPR 25-07
 VARIOUS COUNTIES

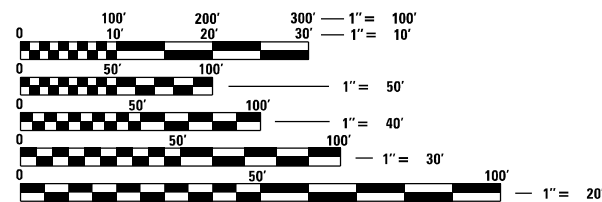
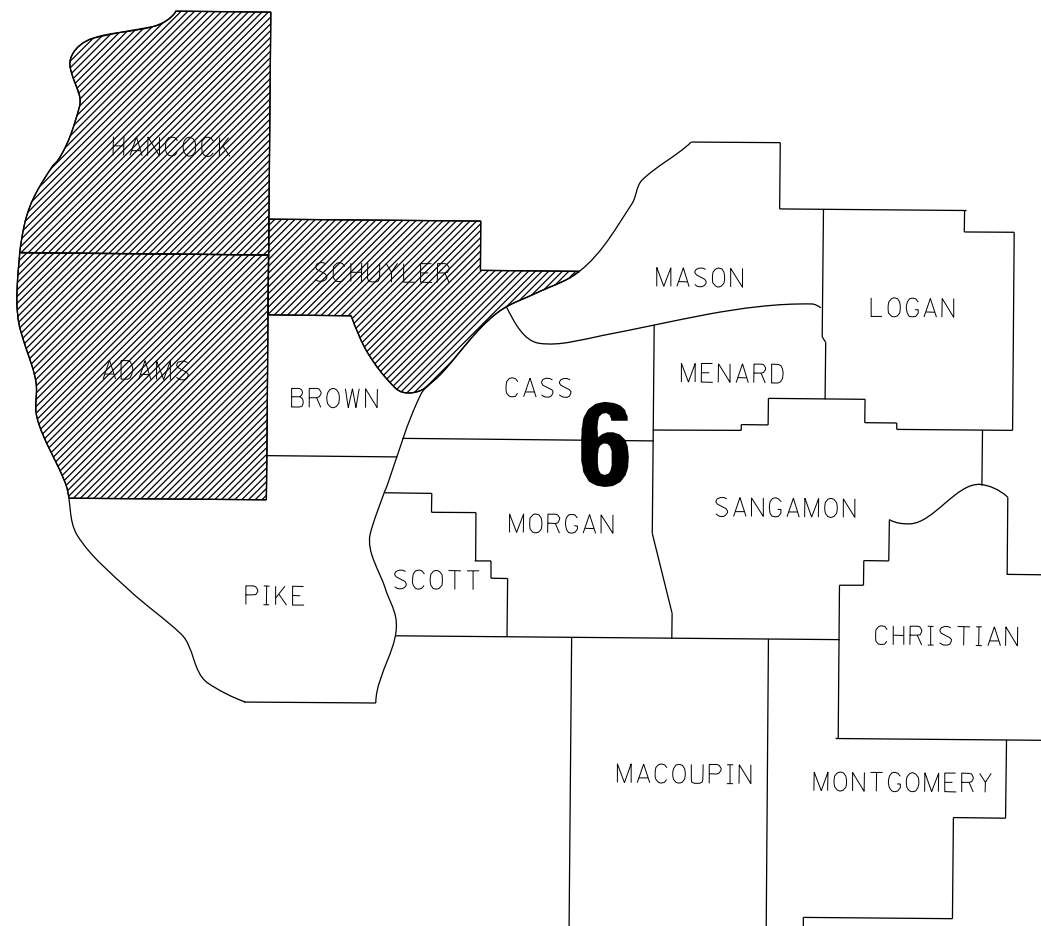
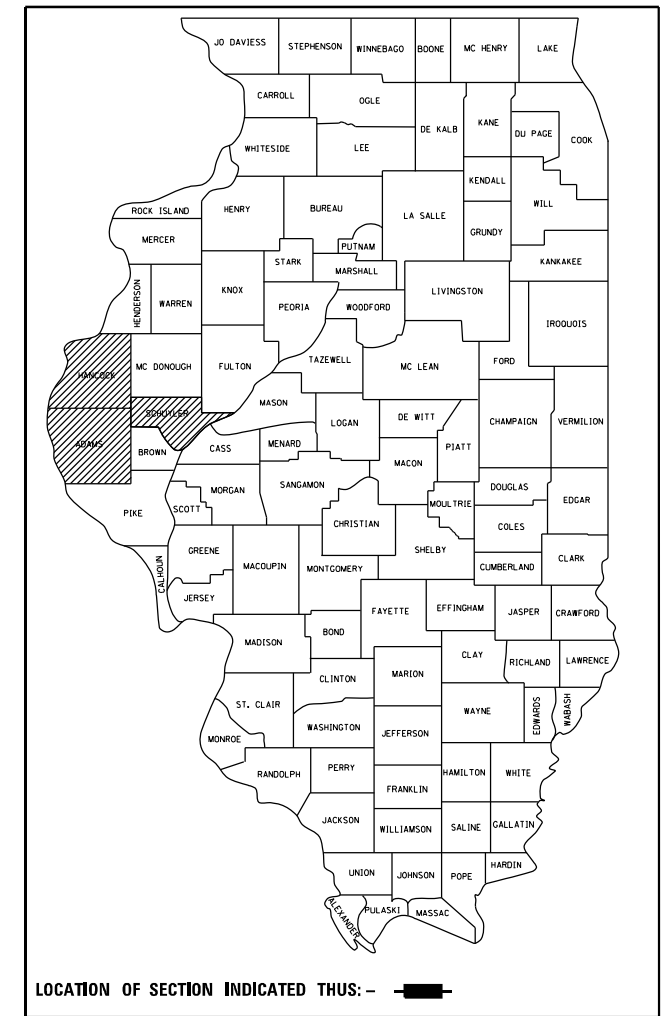
M-60-007-25

FOR INDEX OF SHEETS, SEE SHEET NO. 2

RTE.	SECTION	COUNTY	TOTAL SHEETS	SHEET NO.
VAR.	.	VARIOUS	6	1
		ILLINOIS	CONTRACT NO. 46650	

*D-6 HT PVMNT MRK RPR 25-07

D-XX-XXX-XX



FULL SIZE PLANS HAVE BEEN PREPARED USING STANDARD ENGINEERING SCALES, REDUCED SIZED PLANS WILL NOT CONFORM TO STANDARD SCALES. IN MAKING MEASUREMENTS ON REDUCED PLANS, THE ABOVE SCALES MAY BE USED.

J.U.L.I.E.
 JOINT UTILITY LOCATION INFORMATION FOR EXCAVATION
 1-800-892-0123
 OR 811

PROJECT ENGINEER: JASON JONES (217) 785-5306
 PROJECT MANAGER: ERIC RENT (217) 785-0289

CONTRACT NO. 46650

STATE OF ILLINOIS
 DEPARTMENT OF TRANSPORTATION
 DIVISION OF HIGHWAYS

SUBMITTED March 27 2024

[Signature]
 REGION FOUR ENGINEER

May 10, 2024 *[Signature]*
 ENGINEER OF DESIGN AND ENVIRONMENT

May 10, 2024 *[Signature]*
 DIRECTOR OF HIGHWAYS PROJECT IMPLEMENTATION

PRINTED BY THE AUTHORITY
 OF THE STATE OF ILLINOIS

INDEX OF SHEETS

- 1 COVER SHEET
- 2 INDEX OF SHEETS, STANDARDS, & SIGNATURES
- 3 SUMMARY OF QUANTITIES
- 4-6 SCHEDULE OF QUANTITIES

STANDARDS

- 000001-08 STANDARD SYMBOLS, ABBREVIATIONS AND PATTERNS
- 001006 DECIMAL OF AN INCH AND OF A FOOT
- 701311-03 LN CLOSURE 2L2W-MOVING OP DAY ONLY
- 701400-12 APPROACH TO LANE CLOSURE-FREEWAY EXPRESSWAY
- 701406-13 LANE CLOSURE FREEWAY EXPRESSWAY-DAY OP ONLY
- 701426-09 LANE CLOSURE MULTI LANE-INTERMITTANT OR MOVING OP 45 MPH OR MORE
- 701427-05 LANE CLOSURE MULTI LANE-INTERMITTANT OR MOVING OP FOR SPEEDS LESS THAN 40 MPH
- 701456-05 PARTIAL EXIT RAMP CLOSURE FREEWAY/EXPRESSWAY
- 701501-06 URBAN LANE CLOSURE 2L2W-UNDIVIDED
- 701502-09 URBAN LANE CLOSURE 2L2W WITH BIDIRECT LEFT TURN LANE
- 701601-09 URBAN LANE CLOSURE, MULTILANE, 1W OR 2W WITH NONTRAVERSABLE MEDIAN
- 701602-10 URBAN LANE CLOSURE, MULTILANE, 2W WITH BIDIRECTIONAL LEFT TURN LANE
- 701701-10 URBAN LANE CLOSURE MULTILANE INTERSECTION
- 701901-09 TRAFFIC CONTROL DEVICES
- 780001-05 TYPICAL PAVEMENT MARKINGS

REV. - MS

*D-6 HT PVMNT MRK RPR 25-07

FILE NAME =	USER NAME = Eric.Rent	DESIGNED -	REVISED -	STATE OF ILLINOIS DEPARTMENT OF TRANSPORTATION	GENERAL NOTES	RTE.	SECTION	COUNTY	TOTAL SHEETS	SHEET NO.	
S:\CONTRMAINT_CAD\46650 DB HT PVMNT MRK	FY 25-07\sheet 2-GenNotes.dgn	DRAWN -	REVISED -			VAR.	*	VARIOUS	6	2	
Default	PLOT SCALE = 2.0000' / 1in.	CHECKED -	REVISED -			CONTRACT NO. 46650					
	PLOT DATE = 3/25/2024	DATE -	REVISED -			SCALE:	SHEET	OF	SHEETS	STA.	TO

ILLINOIS FED. AID PROJECT

CODE NO.	ITEM	UNIT	TOTAL QUANTITY	100% STATE	100% STATE	100% STATE
				ADAMS	HANCOCK	SCHUYLER
				ROADWAY	ROADWAY	ROADWAY
				0021	0021	0021
78009000	MODIFIED URETHANE PAVEMENT MARKING - LETTERS AND SYMBOLS	SQ FT	16,279	9,373	6,859	47
78009005	MODIFIED URETHANE PAVEMENT MARKING - LINE 5"	FOOT	1,008,925	557,325	419,885	31,715
78009006	MODIFIED URETHANE PAVEMENT MARKING - LINE 6"	FOOT	70,070	44,125	23,875	2,070
78009008	MODIFIED URETHANE PAVEMENT MARKING - LINE 8"	FOOT	18,439	13,239	5,100	100
78009012	MODIFIED URETHANE PAVEMENT MARKING - LINE 12"	FOOT	13,210	6,866	4,685	1,659
78009024	MODIFIED URETHANE PAVEMENT MARKING - LINE 24"	FOOT	3,820	2,438	1,177	205
78300201	PAVEMENT MARKING REMOVAL - GRINDING	SQ FT	10,000	3,334	3,333	3,333

•D-6 HT PVMNT MRK RPR 24-05

FILE NAME = S:\CONTRMAINT_CAD\46650 D6 HT PVMNT MRK	USER NAME = Eric.Rent	DESIGNED -	REVISED -	STATE OF ILLINOIS DEPARTMENT OF TRANSPORTATION	SUMMARY OF QUANTITIES				RTE.	SECTION	COUNTY	TOTAL SHEETS	SHEET NO.
Plot Scale = 2.0000' / in.	CHECKED -	REVISED -	VAR.						*	VARIOUS	12	3	
Default	DATE -	REVISED -	SCALE: SHEET OF SHEETS STA. TO STA.				CONTRACT NO. 46623						
PLOT DATE = 3/25/2024	DATE -	REVISED -					ILLINOIS FED. AID PROJECT						

CN 46650		MODIFIED URETHANE PAVEMENT MARKING		78009005		78009006	78009008	78009012		7809024	78009000	Notes/Comments
Work Order Job #	County	Nearest Town	Location Description	5 INCH MODIFIED URETHANE	5 INCH MODIFIED URETHANE	6 INCH MODIFIED URETHANE	8 INCH MODIFIED URETHANE	12 INCH MODIFIED URETHANE	12 INCH MODIFIED URETHANE	24 INCH MODIFIED URETHANE	LETTERS AND SYMBOLS MODIFIED URETHANE	
				WHITE	YELLOW	WHITE	WHITE	WHITE	YELLOW	WHITE	WHITE	
1	Adams	Quincy	IL 96 M.P. 14.46(ROSE VALLEY LANE) (BUTT JOINT) TO M.P. 15.85 (CALLAWAY DR)	15,550	15,700	930	720	300	300	275	540.5	18 Left Turn Arrows, 7 Right Turn Arrows
2	Adams	Quincy	IL 96 (24TH & CHESTNUT) IN QUINCY M.P. 19.0 TO 19.65	330	1,500	1350			65	150	187.2	8 Left Turn Arrows, 4 Right Turn Arrows
3	Adams	Quincy	IL 104 (350 FT EAST OF MEYER RD) M.P. 5.88 TO M.P. 12.40 (END OF 4 LANE SECTION)(BUTT JT)	87,000	70,000	8,950	2,100	1,000	400	41	2251.2	Yield Written on Pavement, 92 Left Turn Arrows
4	Adams	Quincy	US 24 (3RD ST) MAINE ST M.P. 0.23 TO M.P. 2.69 LOCUST ST	13,700		1,000	250	75		275	193.5	3 Left Turn Arrows, 2 Right Turn Arrows
5	Adams	Quincy	US 24 , 4TH ST (Locust St to York St.) incl/ Maine st. 3rd st. to 4th st.	14,300		2,000	275	275		285	156	
6	Adams	Quincy	US 24 (Quincy) Illinois state line on Quincy Memorial Bridge M.P. 0.00 TO M.P. 0.58 (4TH ST)	5,250	5,500	1,500	300	100	100	175	108.4	4 Left Turn Arrows
7	Adams	Quincy	ILL 96 (HARRISON ST) M.P. 16.0 TO M.P. 19.0 BJ SOUTH of (CHESTNUT)	17800	23200	1370		324		573	1235.7	59 Left Turn Arrows, 8 Right Turn Arrows, Through Arrows (3), Combo Arrows (6)
8	Adams	Quincy	South of Quincy. IL 57, BJ 1000' N of Radio Rd. to RR Xing 1200' S of Radio Rd., Include RR Xing	13,700	8,000	2,200	500	300	100	250	340.8	6 Left Turn Arrows, 8 Right Turn Arrows, *Sweeper Required,
9	Adams	Mendon	IL 61 Chestnut St. to Caseys (Crosswalks Only)			850		350			0	
10	Adams	Mendon	ILL 336 M.P. 6.5 (MENDON EXIT) to M.P. 16.23 (ADAMS/HANCOCK CO LINE) 600 FT NORTH OF 1820th	147,160	118,635	23,975	9,094	2,642	535	400	4359.6	There are 29 Yield Symbols Painted in the Crossovers , 100 Left Turn Arrows , 84 Right Turn Arrows, 8" Yellow - 805. EL, CL, 6" turn lines in POOR condition in some areas.

*PAVEMENT MARKING REMOVAL GRINDING TO BE DETERMINED BY THE ENGINEER ON AN AS NEEDED BASIS

*D-6 HT PVMNT MRK RPR 25-07

FILE NAME : S:\CONTRMAINT_CAD\46650 D6 HT PVMNT MRK	USER NAME : Eric.Rent	DESIGNED -	REVISED -	STATE OF ILLINOIS DEPARTMENT OF TRANSPORTATION	LOCATIONS: MODIFIED URETHANE #1-10 (ADAMS)	RTE.	SECTION	COUNTY	TOTAL SHEETS	SHEET NO.		
SY 25-07\sheet 4-6 Locations.dgn	PLT SCALE : 2.0000 ' / in.	DRAWN -	REVISED -			VAR.	*	VARIOUS	6	4		
Default	PLT DATE : 3/25/2024	CHECKED -	REVISED -			SCALE:		SHEET OF SHEETS		STA.	TO STA.	ILLINOIS FED. AID PROJECT
		DATE -	REVISED -			CONTRACT NO. 46650						

CN 46650		MODIFIED URETHANE PAVEMENT MARKING		78009005		78009006	78009008	78009012		7809024	78009000	Notes/Comments
Work Order Job #	County	Nearest Town	Location Description	5 INCH MODIFIED URETHANE	5 INCH MODIFIED URETHANE	6 INCH MODIFIED URETHANE	8 INCH MODIFIED URETHANE	12 INCH MODIFIED URETHANE	12 INCH MODIFIED URETHANE	24 INCH MODIFIED URETHANE	LETTERS AND SYMBOLS MODIFIED URETHANE	
				WHITE	YELLOW	WHITE	WHITE	WHITE	YELLOW	WHITE	WHITE	
11	Adams	Ursa	IL96, Intersection of IL96 and N 2450th							14	0	
12	Hancock	Bentley	(Carthage) ILL 336 (TR 500N) M.P. 6.0 to (TR 1200 N) M.P.13.1	93,750	75,000	9,435	1,715	479		195	2122.8	There are 14 Yield Symbols painted in the crossovers, 54 Left Turn Arrows, 39 Right Turn Arrows, EL, CL, 6"
13	Hancock	Bowen	ILL 94 & US 61 INTERSECTION IN BOWEN 4 WAY STOP							50		
14	Hancock	Carthage	US 136 (Carthage) Randolph St to N. Madison St (ILL 136 & ILL 94 Intersection)	5,600	4,850	550			100	61	280.8	18 Left Turn Arrows
15	Hancock	Carthage	US 136 (ILL94/US136 JUNCTION) M.P. 13.40 to M.P. 14.42 (US136 & ILL 336 JUNCTION) (BUTT JT WITH MICRO SEAL)	6,600	17,100	400	175	150	100	72	858	55 Left Turn Arrows
16	Hancock	Hamilton	US 136 (Hamilton) STARTS AT RIVER BRIDGE E/W M.P. O.OO-3.00 (Harnetiaux Supply Store)	17,550	30,750	2,100	500	1450	575	531	1555.2	4 RXR Crossing Symbols, 80 Left Turn Arrows, 4 Right Turn Arrows, 8" Yellow - 650'
17	Hancock	La Harpe	IL9, Intersection of IL9 and C st. (LA HARPE)			70		66				
18	Hancock	Nauvoo	IL 96 (Nauvoo) Lumber St to BJ 105' E of N. Iowa St	15,400	7,450							
19	Hancock	Niota	IL9/IL 96 (Niota): Fort Madison Bridge Turn Off				120	50		35	0	
20	Hancock	Warsaw	Warsaw) Main St N. 2nd St to N. 7th St	600	460	270		270				

*PAVEMENT MARKING REMOVAL GRINDING TO BE DETERMINED BY THE ENGINEER ON AN AS NEEDED BASIS

*D-6 HT PVMNT MRK RPR 25-07

FILE NAME = S:\CONTRMAINT_CAD\46650 D6 HT PVMNT MRK	USER NAME = Eric.Rent	DESIGNED -	REVISED -	STATE OF ILLINOIS DEPARTMENT OF TRANSPORTATION	LOCATION MODIFIED URETHANE #11-20 (ADAMS, HANCOCK)	RTE.	SECTION	COUNTY	TOTAL SHEETS	SHEET NO.
PLT SCALE = 2.0000' / in.	DRAWN -	REVISED -	VAR.			*	VARIOUS	6	5	
Default	CHECKED -	REVISED -	CONTRACT NO. 46650							
PLT DATE = 3/25/2024	DATE -	REVISED -	ILLINOIS FED. AID PROJECT							
				SCALE:	SHEET OF SHEETS	STA. TO STA.				

CN 46650		MODIFIED URETHANE PAVEMENT MARKING		78009005		78009006	78009008	78009012		7809024	78009000	Notes/Comments
Work Order Job #	County	Nearest Town	Location Description	5 INCH MODIFIED URETHANE	5 INCH MODIFIED URETHANE	6 INCH MODIFIED URETHANE	8 INCH MODIFIED URETHANE	12 INCH MODIFIED URETHANE	12 INCH MODIFIED URETHANE	24 INCH MODIFIED URETHANE	LETTERS AND SYMBOLS MODIFIED URETHANE	
				WHITE	YELLOW	WHITE	WHITE	WHITE	YELLOW	WHITE	WHITE	
21	Hancock	Warsaw	IL 96/N Co Rd 700/ Main St Int.: Stop Bar/ Island Only				115	40		78	0	
22	Hancock	West Point	IL 110/336/94 (Carthage) E. Co Rd 500 (M.P. 6.00) to (M.P. 0.00) Adams Co Line	80,375	64,400	11,050	2,475	1,020	385	155	2042.4	There are 12 Yield Symbols Painted in the crossovers, 56 Left Turn Arrows, 38 Right Turn Arrows
23	Schuyler	Camden	ILL 99/ILL 101 INTERSECTION, N of Camden	800	1,080				30	30	0	
24	Schuyler	Littleton	US 67/ IL 101 Int: On 101: 630' W to Int. On 24: 675' N to 1300' S of Int., E of Littleton	5,000	9,800	350	100		1,035	32	46.8	3 Left Turn Arrows
25	Schuyler	Rushville	US 24, BJ W of Cedar St. to Scripps St., Rushville	11,800	3,235	1720		594		143		
Totals				552,265	456,660	70,070	18,439	9,485	3,725	3,820	16,279	
				5 INCH MODIFIED URETHANE	5 INCH MODIFIED URETHANE	6 INCH MODIFIED URETHANE	8 INCH MODIFIED URETHANE	12 INCH MODIFIED URETHANE	12 INCH MODIFIED URETHANE	24 INCH MODIFIED URETHANE	LETTERS AND SYMBOLS MODIFIED URETHANE	
				WHITE	YELLOW	WHITE	WHITE	WHITE	YELLOW	WHITE	WHITE	

*PAVEMENT MARKING REMOVAL GRINDING TO BE DETERMINED BY THE ENGINEER ON AN AS NEEDED BASIS

*D-6 HT PVMNT MRK RPR 25-07

FILE NAME =	USER NAME = Eric.Rent	DESIGNED -	REVISED -	STATE OF ILLINOIS DEPARTMENT OF TRANSPORTATION	LOCATIONS				RTE.	SECTION	COUNTY	TOTAL SHEETS	SHEET NO.
S:\CONTRMAINT_CAD\46650 D6 HT PVMNT MRK	FY 25-07\sheet 4-6 Locations.dgn	DRAWN -	REVISED -		MODIFIED URETHANE #21-25 (HANCOCK, SCHUYLER)				VAR.	*	VARIOUS	6	6
Default	PLOT SCALE = 2.0000' / in.	CHECKED -	REVISED -		SCALE:	SHEET	OF	SHEETS	STA.	TO	STA.	CONTRACT NO. 46650	
	PLOT DATE = 3/25/2024	DATE -	REVISED -										ILLINOIS FED. AID PROJECT