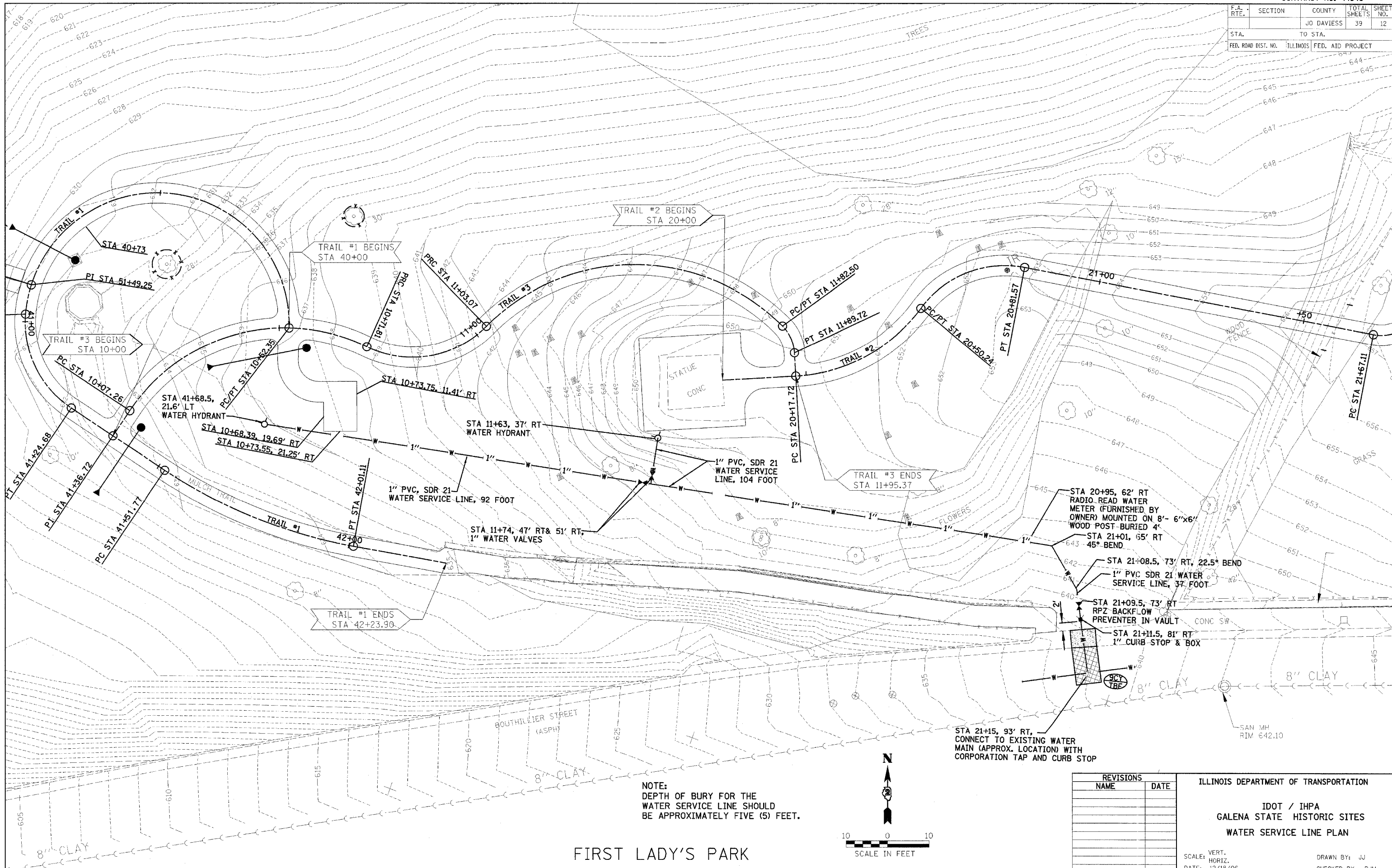
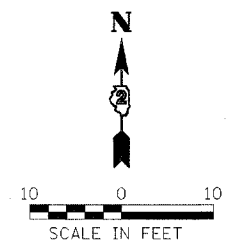


F.A. RTE.	SECTION	COUNTY	TOTAL SHEETS	SHEET NO.
		JO DAVIESS	39	12
STA.	TO STA.			
FED. ROAD DIST. NO.	ILLINOIS	FED. AID PROJECT		



NOTE:
DEPTH OF BURY FOR THE
WATER SERVICE LINE SHOULD
BE APPROXIMATELY FIVE (5) FEET.



REVISIONS	
NAME	DATE

ILLINOIS DEPARTMENT OF TRANSPORTATION

IDOT / IHPA
GALENA STATE HISTORIC SITES
WATER SERVICE LINE PLAN

SCALE: VERT. 1"=10'
HORIZ. 1"=40'
DATE: 12/18/06

DRAWN BY: JJ
CHECKED BY: PJM

FIRST LADY'S PARK