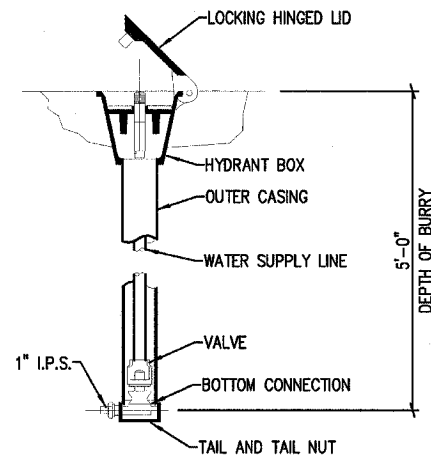
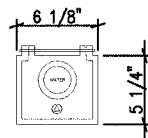
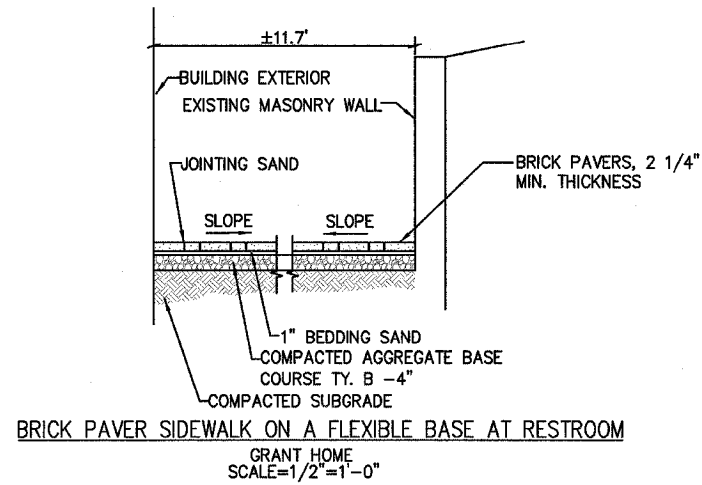
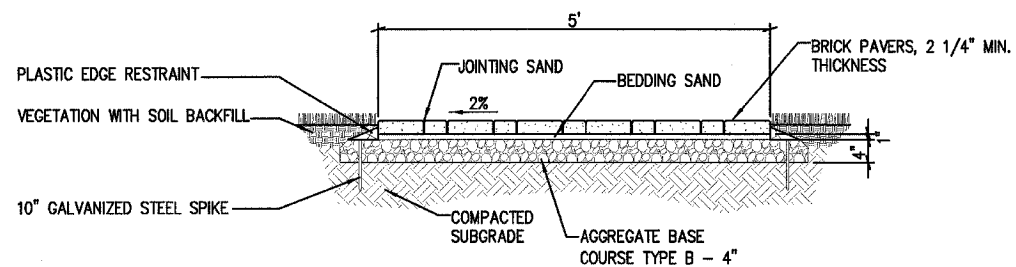


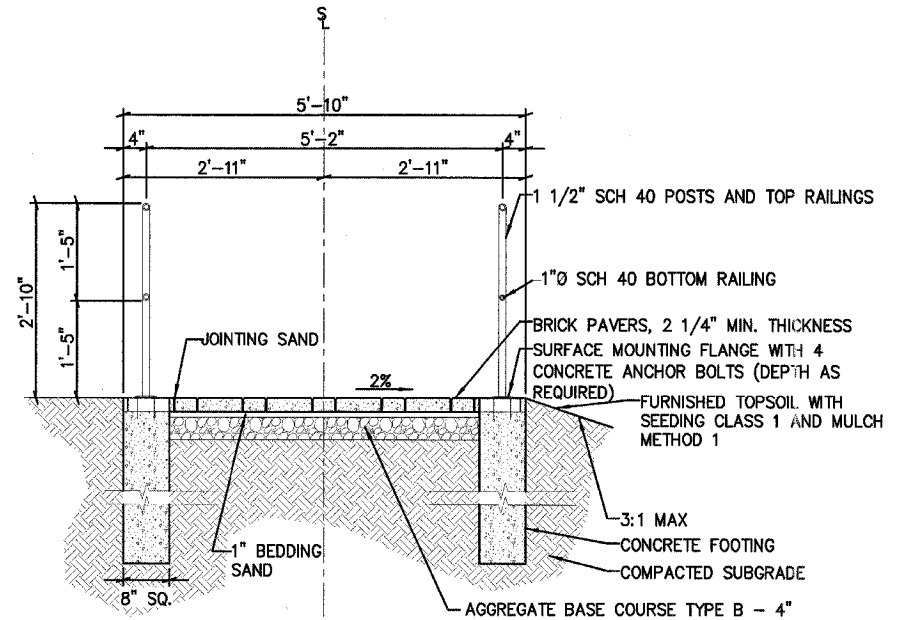
F.A. RTE.	SECTION	COUNTY	TOTAL SHEETS	SHEET NO.
		JO DAVIESS	39	24
STA.	TO STA.			
FED. ROAD DIST. NO.	ILLINOIS FED. AID PROJECT			



WATER HYDRANT
HYDRANT 1" FLUSH MOUNTED WITH LOCKING LID
FIRST LADY PARK
NOT TO SCALE

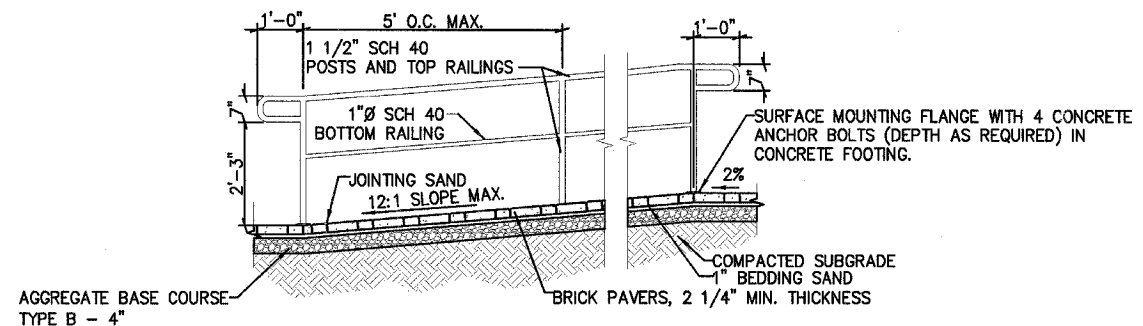


BRICK PAVER SIDEWALK ON A FLEXIBLE BASE CROSS SECTION
GRANT HOME
STATION 30+25.50 TO STATION 31+17.62
SCALE=3/4"=1'-0"



BRICK PAVER SIDEWALK ON A FLEXIBLE BASE (AT RAMP) CROSS SECTION
GRANT HOME STATION 31+17.62 TO STATION 33+36.34
SCALE: 3/4"=1'-0"

- NOTE:
1. BETWEEN HANDRAIL POST FOOTINGS SECURE SIDEWALK IN PLACE WITH PLASTIC EDGE RESTRAINT AND 10" GALV. STEEL SPIKES AS RECOMMENDED BY MANUFACTURER.



- NOTES:
1. ALL TUBES AND PIPES ARE TO BE STEEL. JOINTS BETWEEN RAILINGS AND POSTS ARE TO BE WELDED AND GROUND SMOOTH.
2. FOR FINISHING REQUIREMENTS SEE SPECIAL PROVISIONS. COLOR TO BE SELECTED BY SITE MANAGER FROM MANUFACTURERS STANDARD RANGE.
3. HANDRAIL SYSTEM DESIGN AND CONSTRUCTION IS TO MEET OR EXCEED ALL APPLICABLE LOCAL BUILDING CODE AND LOADING REQUIREMENTS.
4. CONTRACTOR IS REQUIRED TO FURNISH SHOP DRAWINGS OF RAILING SYSTEM IDENTIFYING LAYOUT, DIMENSIONS, MATERIALS, AND PRODUCTS FOR APPROVAL PRIOR TO CONSTRUCTION.

BRICK PAVER SIDEWALK ON A FLEXIBLE BASE (AT RAMP) - LONGITUDINAL SECTION
GRANT HOME STATION 31+17.62 TO STATION 33+36.34
SCALE: 1/2"=1'-0"

REVISIONS		ILLINOIS DEPARTMENT OF TRANSPORTATION
NAME	DATE	
		IDOT / IHPA GALENA STATE HISTORIC SITES MISCELLANEOUS DETAILS

SCALE: VERT. HORIZ. DATE: 12/18/06

DRAWN BY: JJ
CHECKED BY: PJM