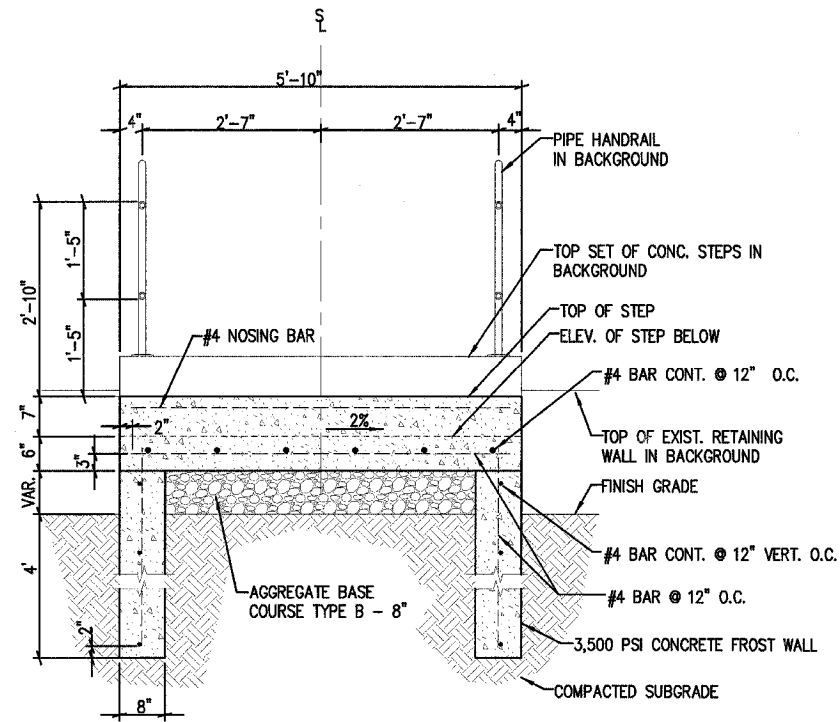
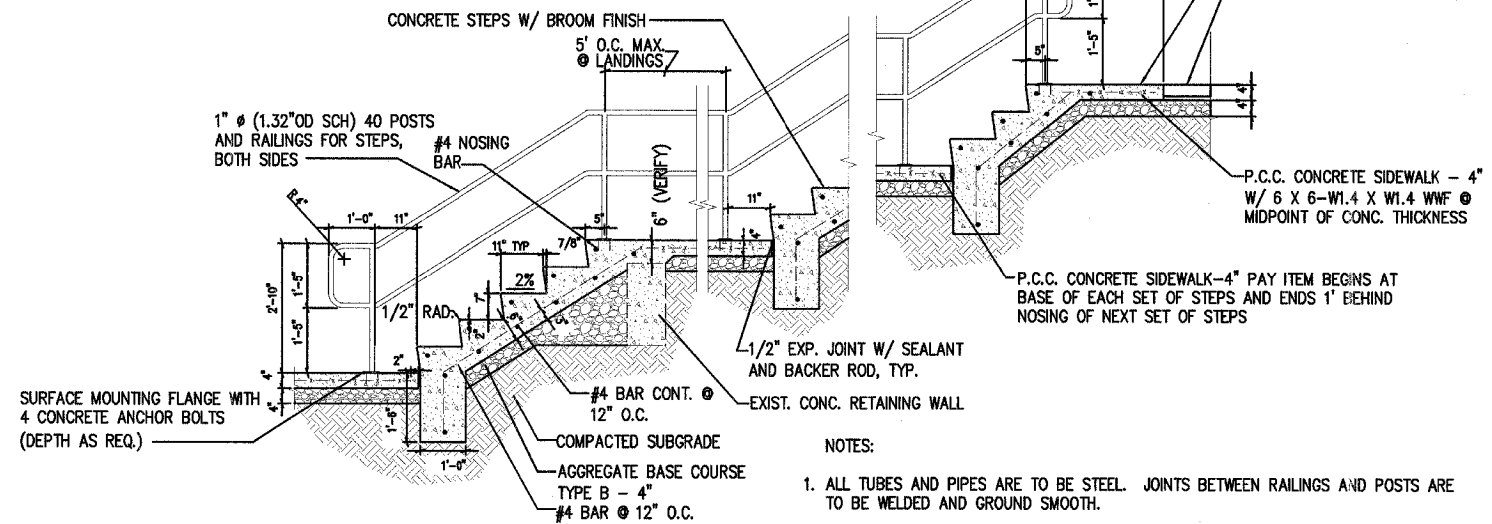


F.A. RTE.	SECTION	COUNTY	TOTAL SHEETS	SHEET NO.
		JO DAVIESS	39	27
STA.	TO STA.			
FED. ROAD DIST. NO.	ILLINOIS FED. AID PROJECT			

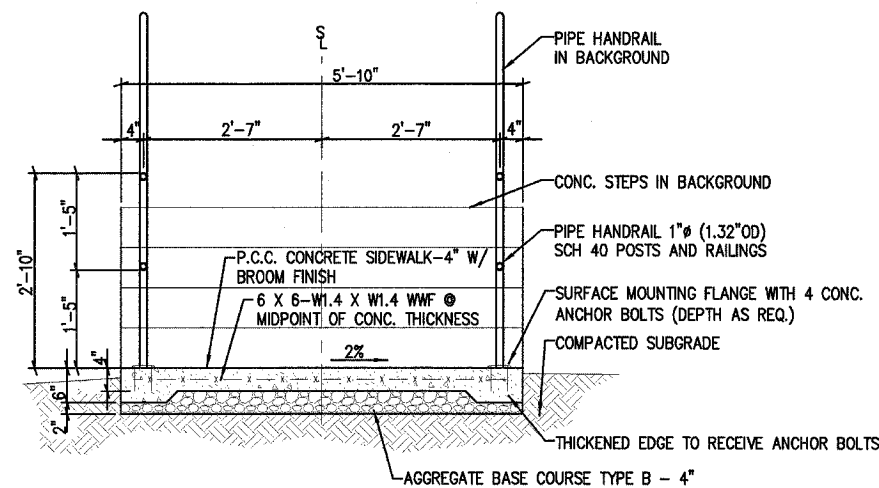


**CONCRETE STEP CROSS SECTION**  
FIRST LADY PARK-BOTTOM SET OF STEPS  
SCALE: 3/4"=1'-0"



**PROPOSED CONCRETE STEPS LONGITUDINAL SECTION**  
FIRST LADY PARK  
SCALE: 1/2"=1'-0"

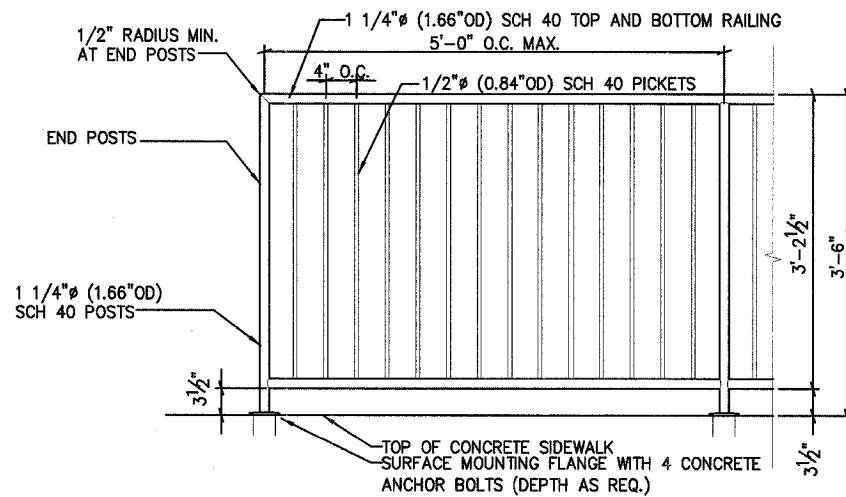
- NOTES:
1. ALL TUBES AND PIPES ARE TO BE STEEL. JOINTS BETWEEN RAILINGS AND POSTS ARE TO BE WELDED AND GROUND SMOOTH.
  2. FINISH TO BE E.S.P. APPLIED THERMOSETTING T.G.I.C. POLYESTER POWDER COATING, 3 MILLS. THICK MINIMUM, BAKED AT 400F FOR 10 MINUTES MINIMUM. COLOR TO BE SELECTED BY SITE MANAGER FROM MANUFACTURER'S STANDARD RANGE.
  3. HANDRAIL SYSTEM DESIGN AND CONSTRUCTION IS TO MEET OR EXCEED ALL APPLICABLE LOCAL BUILDING CODE AND LOADING REQUIREMENTS.
  4. CONTRACTOR IS REQUIRED TO FURNISH SHOP DRAWINGS OF RAILING SYSTEM IDENTIFYING LAYOUT, DIMENSIONS, MATERIALS, AND PRODUCTS FOR APPROVAL PRIOR TO CONSTRUCTION.
  5. FOR NUMBER OF RISERS AND LENGTH OF EACH SET OF STEPS, SEE PLANS.



**P.C.C. CONCRETE SIDEWALK-4\"/>**

NOTES:

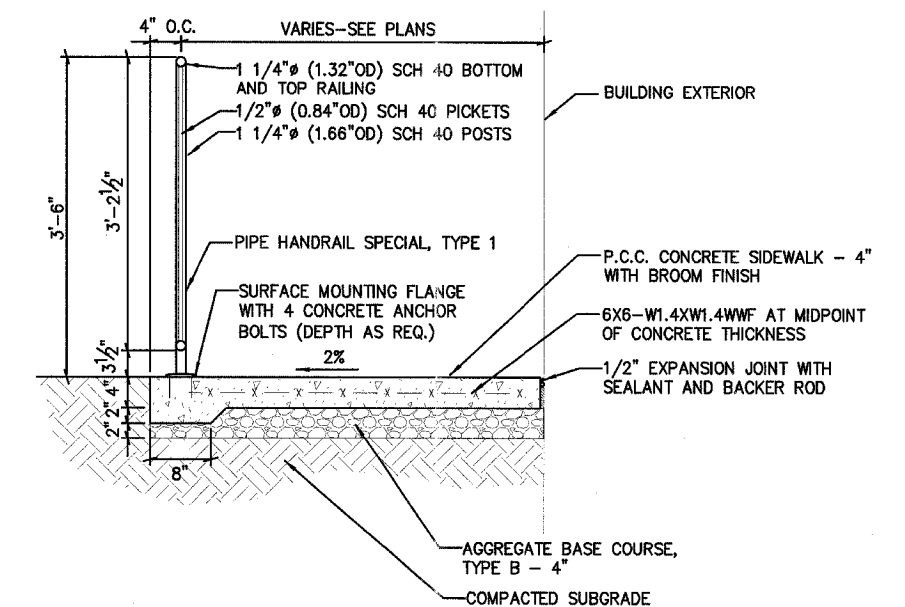
1. ALL TUBES AND PIPES ARE TO BE STEEL. JOINTS BETWEEN RAILINGS AND POSTS ARE TO BE WELDED AND GROUND SMOOTH.
2. FINISH TO BE E.S.P. APPLIED THERMOSETTING T.G.I.C. POLYESTER POWDER COATING, 3 MILLS. THICK MINIMUM, BAKED AT 400F FOR 10 MINUTES MINIMUM. COLOR TO BE SELECTED BY SITE MANAGER FROM MANUFACTURER'S STANDARD RANGE.
3. HANDRAIL SYSTEM DESIGN AND CONSTRUCTION IS TO MEET OR EXCEED ALL APPLICABLE LOCAL BUILDING CODE AND LOADING REQUIREMENTS.
4. CONTRACTOR IS REQUIRED TO FURNISH SHOP DRAWINGS OF RAILING SYSTEM IDENTIFYING LAYOUT, DIMENSIONS, MATERIALS, AND PRODUCTS FOR APPROVAL PRIOR TO CONSTRUCTION.



**PIPE HANDRAIL SPECIAL, TYPE 1, ELEVATION AT RESTROOM BUILDING**  
SCALE: 1"=1'-0"

NOTES:

1. ALL TUBES AND PIPES ARE TO BE STEEL. JOINTS BETWEEN RAILINGS, POSTS, AND PICKETS ARE TO BE GROUND SMOOTH.
2. SAME AS NOTE 2 FOR STAIRS ABOVE.
3. RAILING SYSTEM DESIGN AND CONSTRUCTION IS TO MEET OR EXCEED AN APPLICABLE LOCAL BUILDING CODE AND LOADING REQUIREMENTS FOR GUARD RAILS.
4. SAME AS NOTE 4 FOR STAIRS ABOVE.



**PIPE HANDRAIL SPECIAL, TYPE 1, CROSS SECTION AT RESTROOM BUILDING**  
SCALE: 1"=1'-0"

REVISIONS	
NAME	DATE

ILLINOIS DEPARTMENT OF TRANSPORTATION  
IDOT / IHPA  
GALENA STATE HISTORIC SITES  
MISCELLANEOUS DETAILS

SCALE: VERT.  
HORIZ.  
DATE: 12/18/06

DRAWN BY: JJ  
CHECKED BY: PJM