

F.A.P. RTE.	SECTION	COUNTY	TOTAL SHEETS	SHEET NO.
577	3114 N-1	COOK	72	11
STA.		TO STA.		
FED. ROAD DIST. NO.		ILLINOIS	FED. AID PROJECT	

EXIST. CURVE ADDIT1-1
 PI STA. = 9+94.54
 $\Delta = 20^\circ 38' 49''$ (RT)
 $D = 1^\circ 45' 110''$
 $R = 3,268.40'$
 $T = 595.35'$
 $L = 1,177.79'$
 $E = 53.78'$
 $\theta = 2.87'$
 S.E. RUN = 3+99.19
 P.C. STA. = 15+76.98
 P.T. STA. = 15+76.98

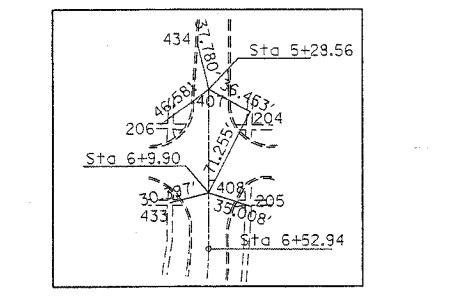
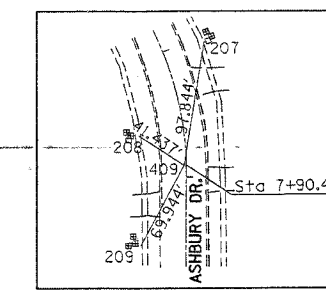
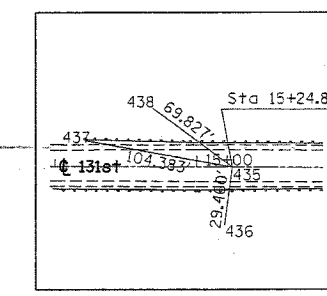
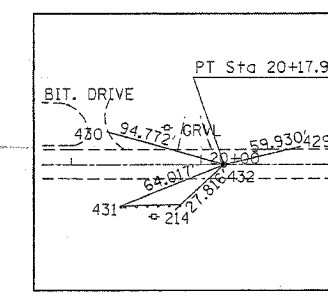
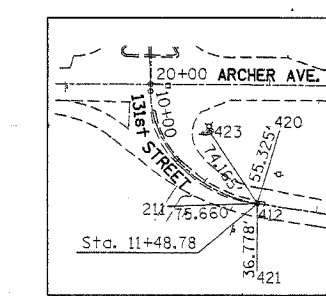
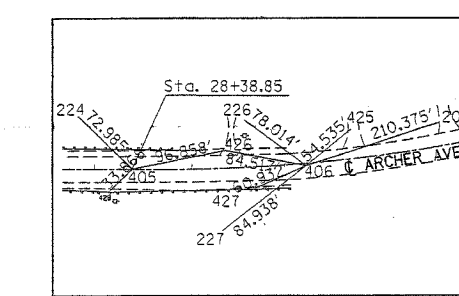
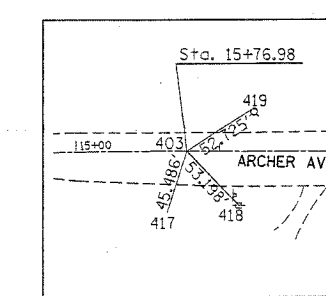
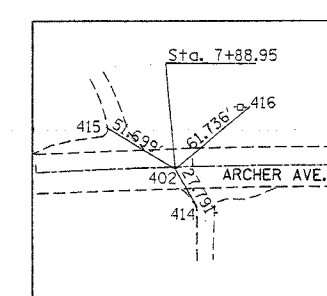
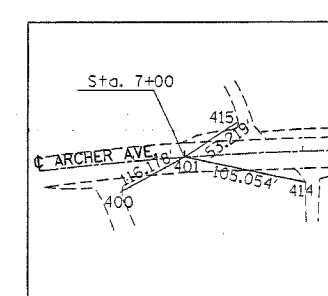
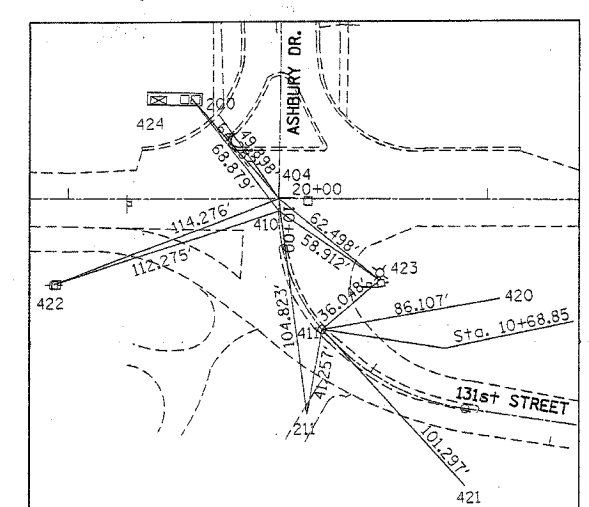
EXIST. CURVE CURVES
 PI STA. = 7+23.98
 $\Delta = 31^\circ 30' 46''$ (RT)
 $D = 22^\circ 55' 06''$
 $R = 250.00'$
 $T = 131.50'$
 $L = 9.76'$
 S.E. RUN = 6+52.94
 P.C. STA. = 7+30.44
 P.T. STA. = 7+30.44

EXIST. CURVE CURVE2
 PI STA. = 29+27.94
 $\Delta = 4^\circ 11' 25''$ (LT)
 $D = 2^\circ 21' 110''$
 $R = 2,435.00'$
 $T = 89.08'$
 $L = 178.08'$
 $E = 1.63'$
 $\theta =$
 $T.R. =$
 $S.E. RUN =$
 $P.C. STA. = 28+38.85$
 $P.T. STA. = 30+16.94$

EXIST. CURVE CURVE4
 PI STA. = 10+39.02
 $\Delta = 40^\circ 28' 59''$ (LT)
 $D = 64^\circ 52' 23''$
 $R = 88.32'$
 $T = 32.57'$
 $L = 62.40'$
 $E = 5.81'$
 $\theta =$
 $T.R. =$
 $S.E. RUN =$
 $P.C. STA. = 10+06.45$
 $P.T. STA. = 10+68.86$

EXIST. CURVE CURVES
 PI STA. = 11+10.60
 $\Delta = 40^\circ 53' 04''$ (LT)
 $D = 51^\circ 09' 25''$
 $R = 112.00'$
 $T = 41.75'$
 $L = 79.92'$
 $E = 7.53'$
 $\theta =$
 $T.R. =$
 $S.E. RUN =$
 $P.C. STA. = 10+68.86$
 $P.T. STA. = 11+48.78$

EXIST. CURVE CURVE6
 PI STA. = 17+71.39
 $\Delta = 0^\circ 24' 54''$ (LT)
 $D = 0^\circ 05' 03''$
 $R = 68,052.38'$
 $T = 246.53'$
 $L = 493.06'$
 $E = 0.45'$
 $\theta =$
 $T.R. =$
 $S.E. RUN =$
 $P.C. STA. = 15+24.86$
 $P.T. STA. = 20+17.92$



BENCHMARKS:
 TP 19, SPIKE NAIL SET NORTH FACE POWER POLE SW CORNER OF 131st ST. AND DAVINCI ST. ELEVATION = 710.096
 TP 23, RR SPIKE SET WEST FACE OF WOOD LIGHT POLE, SIDE OF IL. 171 (ARCHER AVE.), FIRST LIGHT POLE N.E. OF 131ST ST. AT INTERSECTION AT SOUTHEASTERLY CORNER. ELEVATION = 709.963
 TP 50, N. FLANGE OF HYDRANT NORTHERLY SIDE OF IL. 171 (ARCHER AVE.), FIRST HYDRANT WESTERLY OF 131ST ST. ELEVATION = 715.11

REVISIONS	
NAME	DATE

ILLINOIS DEPARTMENT OF TRANSPORTATION
**IL. RTE. 171 (ARCHER AVE.)
 AT ASHBURY DRIVE AND
 131st STREET
 ALIGNMENT & TIES PLAN**
 SCALE: VERT. _____
 HORIZ. _____
 DATE _____ DRAWN BY _____
 CHECKED BY _____

PLOT DATE = 1/3/2007
 FILE NAME = c:\puro\puro\p119802\ah_rdu.dwg
 USER NAME = drcabangra