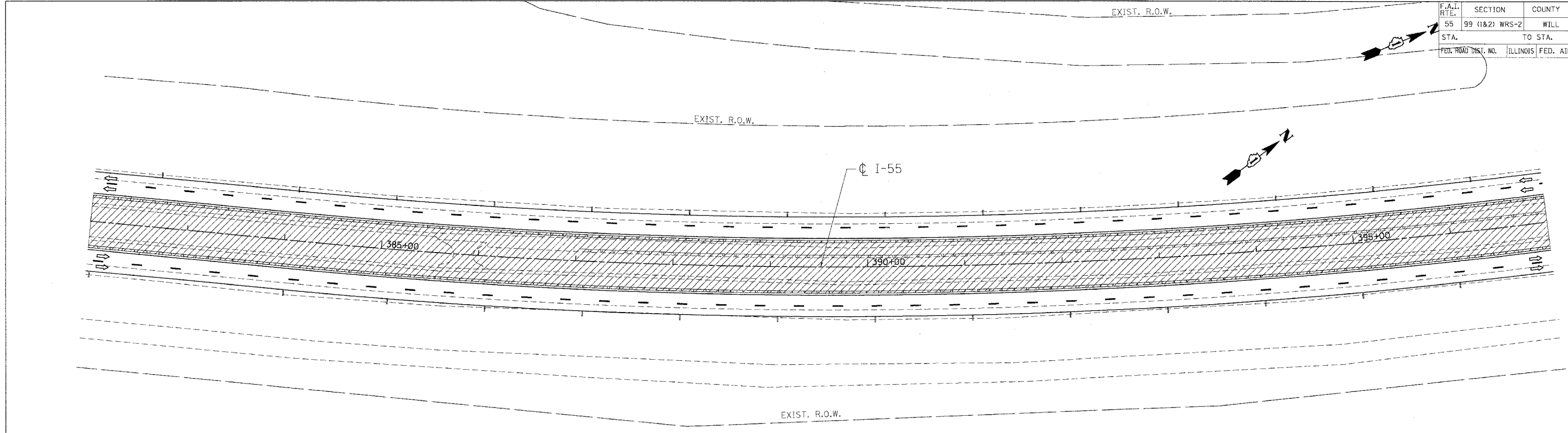
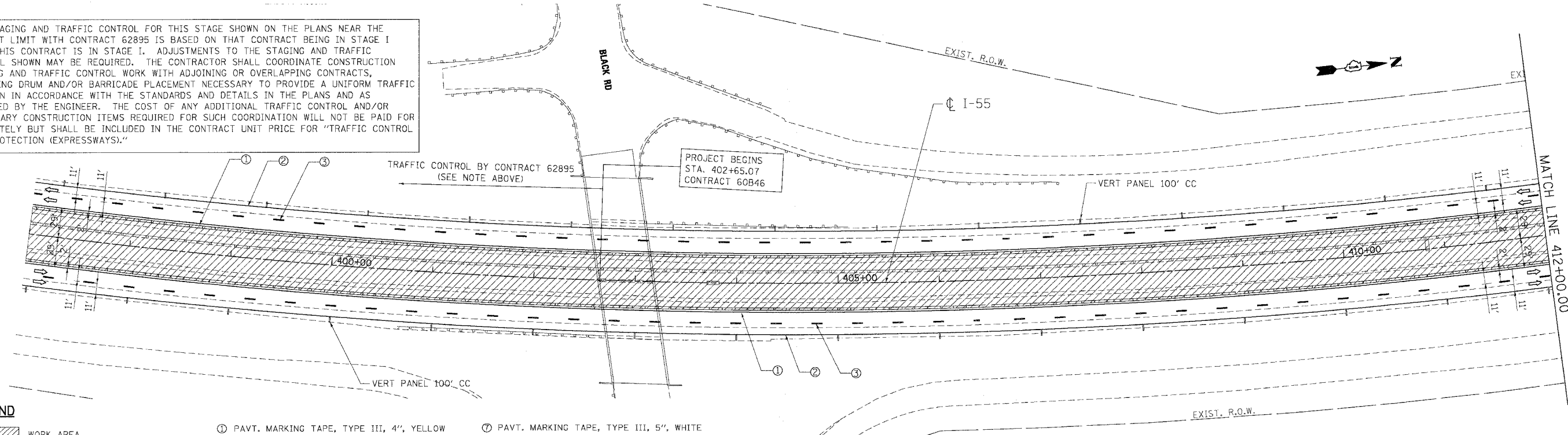


F.A.I. RTE.	SECTION	COUNTY	TOTAL SHEETS	SHEET NO.
55	99 (I&Z) WRS-2	WILL.	228	89
STA.		TO STA.		
FED. ROAD DIST. NO.		ILLINOIS FED. AID PROJECT		



NOTE:

THE STAGING AND TRAFFIC CONTROL FOR THIS STAGE SHOWN ON THE PLANS NEAR THE PROJECT LIMIT WITH CONTRACT 62895 IS BASED ON THAT CONTRACT BEING IN STAGE I WHEN THIS CONTRACT IS IN STAGE I. ADJUSTMENTS TO THE STAGING AND TRAFFIC CONTROL SHOWN MAY BE REQUIRED. THE CONTRACTOR SHALL COORDINATE CONSTRUCTION STAGING AND TRAFFIC CONTROL WORK WITH ADJOINING OR OVERLAPPING CONTRACTS, INCLUDING DRUM AND/OR BARRICADE PLACEMENT NECESSARY TO PROVIDE A UNIFORM TRAFFIC PATTERN IN ACCORDANCE WITH THE STANDARDS AND DETAILS IN THE PLANS AND AS DIRECTED BY THE ENGINEER. THE COST OF ANY ADDITIONAL TRAFFIC CONTROL AND/OR TEMPORARY CONSTRUCTION ITEMS REQUIRED FOR SUCH COORDINATION WILL NOT BE PAID FOR SEPARATELY BUT SHALL BE INCLUDED IN THE CONTRACT UNIT PRICE FOR "TRAFFIC CONTROL AND PROTECTION (EXPRESSWAYS)."



LEGEND

- | | | |
|--|---|--|
| WORK AREA | ① PAVT. MARKING TAPE, TYPE III, 4", YELLOW | ⑦ PAVT. MARKING TAPE, TYPE III, 5", WHITE |
| DRUMS W/ MONO-DIRECTIONAL STEADY BURN LIGHT | ② PAVT. MARKING TAPE, TYPE III, 4", WHITE | ⑧ EPOXY PAVT. MARKING LINE 4", WHITE |
| VERTICAL PANEL | ③ PAVT. MARKING TAPE, TYPE III, 5", WHITE (10' DASH 30' SKIP) | ⑨ EPOXY PAVT. MARKING LINE 4", YELLOW |
| TEMPORARY CONC. BARRIER | ④ PAVT. MARKING TAPE, TYPE III, 4", WHITE (2' DASH 6' SKIP) | ⑩ EPOXY PAVT. MARKING LINE 5", WHITE (10" DASH 30' SKIP) |
| TRAFFIC FLOW | ⑤ PAVT. MARKING TAPE, TYPE III, 8", WHITE | ⑪ EPOXY PAVT. MARKING LINE 5", WHITE |
| BARRICADE, TYPE III WITH TWO FLASHING LIGHTS | ⑥ PAVT. MARKING TAPE, TYPE III, 12", WHITE | |

NOTE:

AFTER THE CONSTRUCTION OF THE CONCRETE BARRIER AND THE BASE COURSE OF NEW INSIDE LANES AND SHOULDERS IS COMPLETE, THE CONTRACTOR SHALL REMOVE THE TEMPORARY CONCRETE BARRIER AND REPLACE IT WITH DRUMS WITH STEADY BURN LIGHTS SPACED AS SHOWN ON THE PLANS. AFTER THE TEMPORARY CONCRETE BARRIER IS REPLACED WITH DRUMS, EMERGENCY PULLOUTS SHALL CONTINUE TO BE PROVIDED APPROXIMATELY EVERY MILE AS DIRECTED BY THE ENGINEER AND AS SHOWN ON THE DETAIL FOR EMERGENCY PULLOUT USING DRUMS IN LIEU OF THE TEMPORARY CONCRETE BARRIER.

REVISIONS	
NAME	DATE

ILLINOIS DEPARTMENT OF TRANSPORTATION
 FAI ROUTE 55 (BLACK ROAD TO U.S. 30)
 WIDENING AND RESURFACING

**STAGING AND TRAFFIC CONTROL
 FAI 55 - STAGE I
 STA. 402+65.07 TO STA. 412+00.00**

SCALE: 1"=50'
 DATE 03/15/07
 DRAWN BY AG
 CHECKED BY DDH

TENG
 TENG & ASSOCIATES, INC.
 ENGINEERS/ARCHITECTS/PLANNERS
 CHICAGO, ILLINOIS