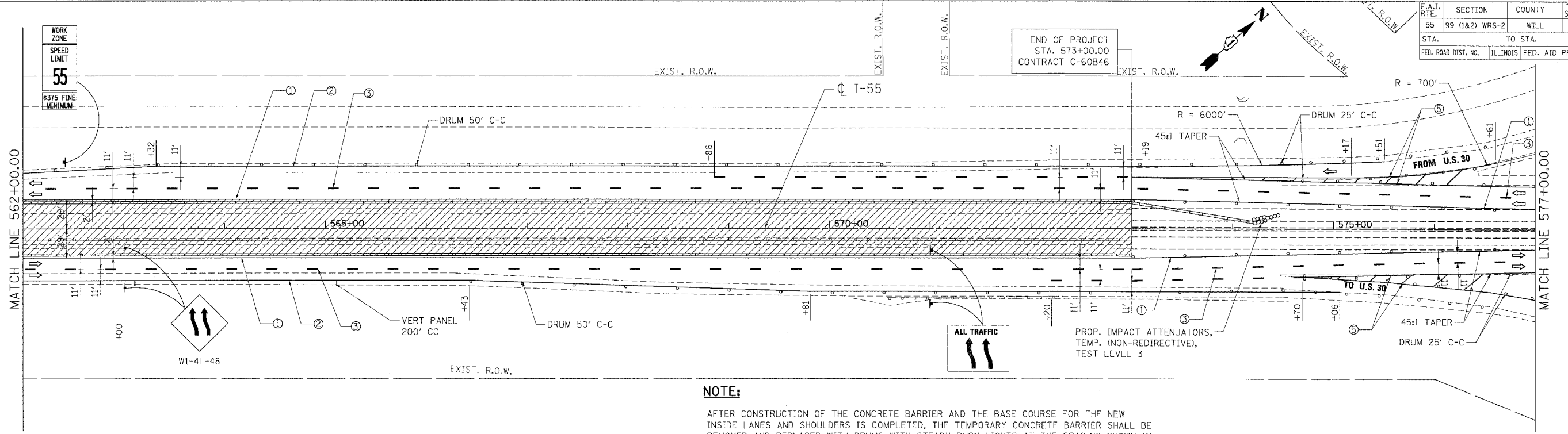
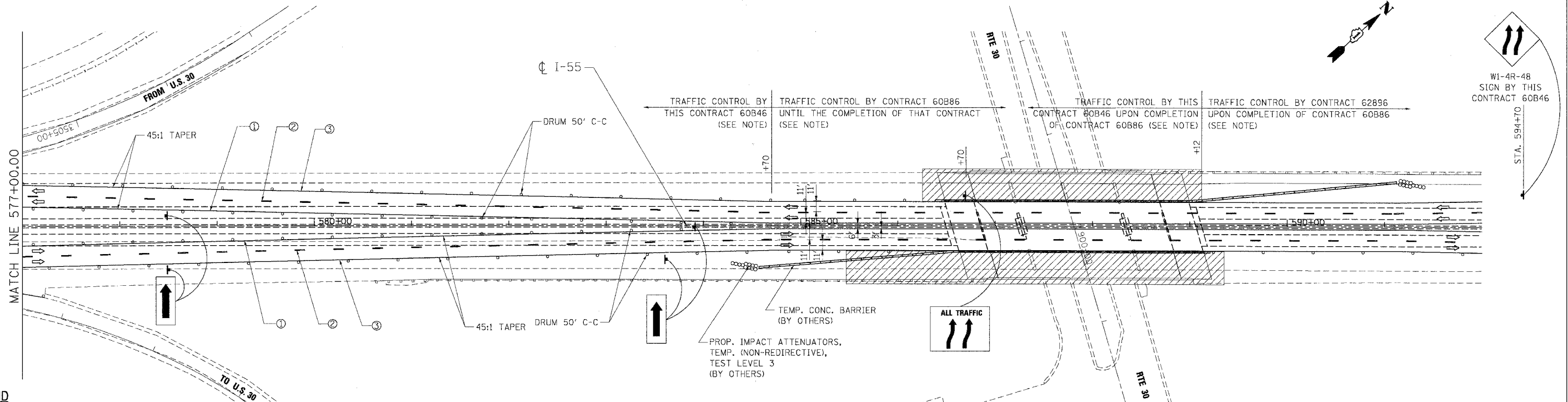


F.A.I. RTE.	SECTION	COUNTY	TOTAL SHEETS	SHEET NO.
55	99 (1&2) WRS-2	WILL	228	95
STA. 562+00.00		TO STA. 577+00.00		
FED. ROAD DIST. NO.		ILLINOIS FED. AID PROJECT		



**NOTE:**

AFTER CONSTRUCTION OF THE CONCRETE BARRIER AND THE BASE COURSE FOR THE NEW INSIDE LANES AND SHOULDERS IS COMPLETED, THE TEMPORARY CONCRETE BARRIER SHALL BE REMOVED AND REPLACED WITH DRUMS WITH STEADY BURN LIGHTS AT THE SPACING SHOWN IN THE PLANS.



**LEGEND**

- WORK AREA
- DRUMS W/ MONO-DIRECTIONAL STEADY BURN LIGHT
- VERTICAL PANEL
- TEMPORARY CONC. BARRIER
- TRAFFIC FLOW
- BARRICADE, TYPE III WITH TWO FLASHING LIGHTS
- ① PAVT. MARKING TAPE, TYPE III, 4", YELLOW
- ② PAVT. MARKING TAPE, TYPE III, 4", WHITE
- ③ PAVT. MARKING TAPE, TYPE III, 5", WHITE (10' DASH 30' SKIP)
- ④ PAVT. MARKING TAPE, TYPE III, 4", WHITE (2' DASH 6' SKIP)
- ⑤ PAVT. MARKING TAPE, TYPE III, 8", WHITE
- ⑥ PAVT. MARKING TAPE, TYPE III, 12", WHITE
- ⑦ PAVT. MARKING TAPE, TYPE III, 5", WHITE
- ⑧ EPOXY PAVT. MARKING LINE 4", WHITE
- ⑨ EPOXY PAVT. MARKING LINE 4", YELLOW
- ⑩ EPOXY PAVT. MARKING LINE 5", WHITE (10" DASH 30' SKIP)
- ⑪ EPOXY PAVT. MARKING LINE 5", WHITE

**NOTE:**

THE STAGING AND TRAFFIC CONTROL FOR THIS STAGE SHOWN ON THE PLANS NEAR THE PROJECT LIMIT WITH CONTRACT 60B86 IS BASED ON THAT CONTRACT BEING IN STAGE II WHEN THIS CONTRACT IS IN STAGE I. ADJUSTMENTS TO THE STAGING AND TRAFFIC CONTROL SHOWN MAY BE REQUIRED. THE CONTRACTOR SHALL COORDINATE CONSTRUCTION STAGING AND TRAFFIC CONTROL WORK WITH ADJOINING OR OVERLAPPING CONTRACTS, INCLUDING DRUM AND/OR BARRICADE PLACEMENT NECESSARY TO PROVIDE A UNIFORM TRAFFIC PATTERN IN ACCORDANCE WITH THE STANDARDS AND DETAILS IN THE PLANS AND AS DIRECTED BY THE ENGINEER. THE COST OF ANY ADDITIONAL TRAFFIC CONTROL AND/OR TEMPORARY CONSTRUCTION ITEMS REQUIRED FOR SUCH COORDINATION WILL NOT BE PAID FOR SEPARATELY BUT SHALL BE INCLUDED IN THE CONTRACT UNIT PRICE FOR "TRAFFIC CONTROL AND PROTECTION (EXPRESSWAYS)."

REVISIONS	
NAME	DATE

ILLINOIS DEPARTMENT OF TRANSPORTATION  
 FAI ROUTE 55 (BLACK ROAD TO U.S. 30)  
 WIDENING AND RESURFACING

**STAGING AND TRAFFIC CONTROL  
 FAI 55 - STAGE I  
 STA. 562+00.00 TO STA. 592+00.00**

SCALE: 1"=50'  
 DATE: 03/15/07  
 DRAWN BY: AG  
 CHECKED BY: DDH

**TENG**  
 TENG & ASSOCIATES, INC.  
 ENGINEERS/ARCHITECTS/PLANNERS  
 CHICAGO, ILLINOIS

PLOT DATE = 03/15/07  
 FILE NAME = 60B46.DWG  
 USER NAME = JLS  
 3-15-2007 12:28:38  
 S:\DOCUMENT\60B46\60B46.DWG