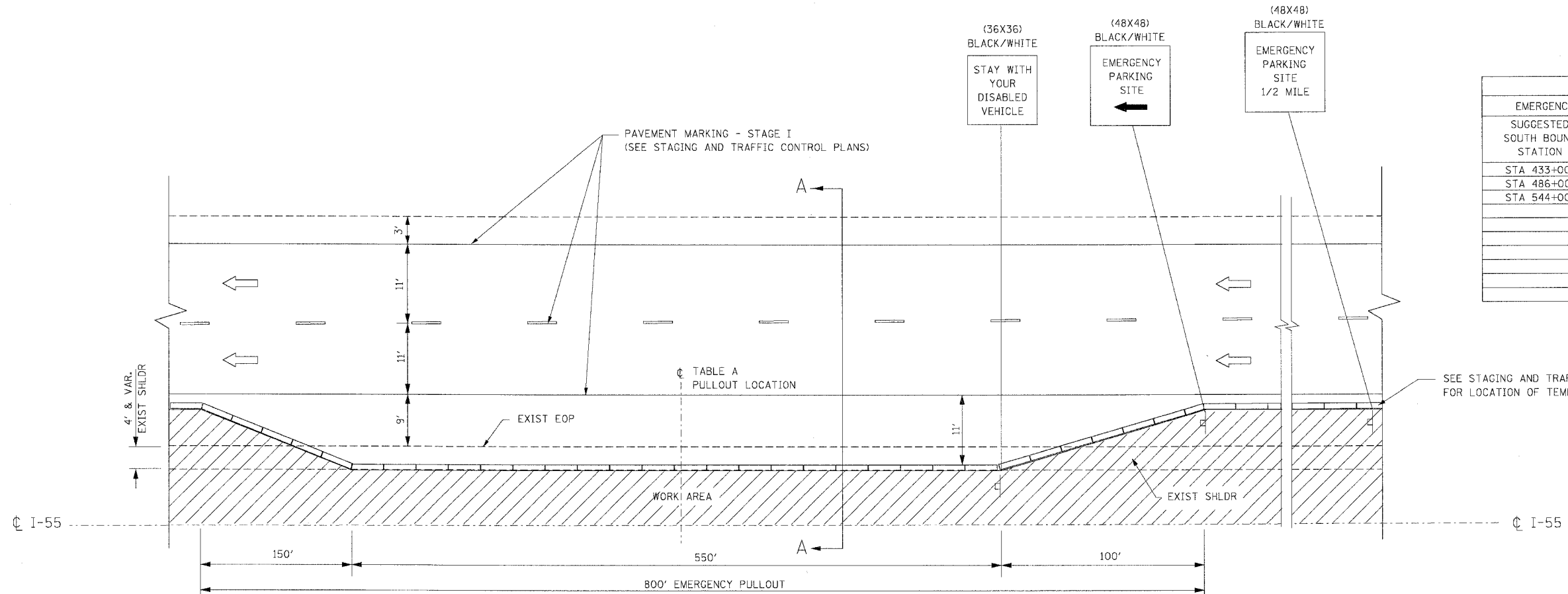


F.A.I. RTE.	SECTION	COUNTY	TOTAL SHEETS	SHEET NO.
55	99 (1&2) WRS-2	WILL	228	104
STA.		TO STA.		
FED. ROAD DIST. NO.		ILLINOIS	FED. AID PROJECT	

SUGGESTED SOUTH BOUND STATION	SUGGESTED NORTH BOUND STATION
STA 433+00	STA 454+00
STA 486+00	STA 522+00
STA 544+00	



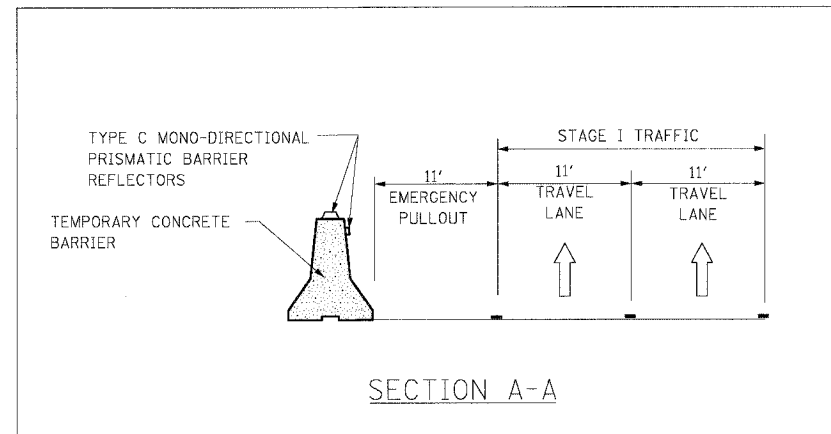
**EMERGENCY PULL OUT
HALF ROADWAY PLAN
STAGE I**

NOTES:

- EMERGENCY PULLOUTS INSTALLED DURING STAGE I CONSTRUCTION SHALL BE LOCATED AS SPECIFIED IN TABLE A. THE LOCATIONS SHALL BE APPROVED BY THE ENGINEER.
- EMERGENCY PULLOUTS SHALL BE RELOCATED TO AN ADJACENT LOCATION, APPROVED BY THE ENGINEER, TO COMPLETE STAGE I WORK. THE RELOCATION OF THE TEMPORARY CONCRETE BARRIER WILL BE PAID AT THE CONTRACT UNIT PRICE FOR "RELOCATE TEMPORARY BARRIER".
- ALL EMERGENCY PULLOUTS SIGNS WILL BE PAID FOR AT THE CONTRACT UNIT PRICE FOR "TEMPORARY INFORMATION SIGNING"
- THE COST OF THE TRAFFIC CONTROL REQUIRED FOR THE INSTALLATION AND RELOCATION OF EMERGENCY PULLOUTS AND THE COST OF RELOCATION OF THE TEMPORARY INFORMATION SIGNING FOR EMERGENCY PULLOUTS WILL NOT BE PAID FOR SEPARATELY AND SHALL BE INCLUDED IN THE CONTRACT UNIT PRICE FOR "TRAFFIC CONTROL AND PROTECTION (EXPRESSWAYS)".

LEGEND:

- DIRECTION OF TRAFFIC
- WORK AREA
- SIGN ON SUPPORT
- TEMPORARY CONCRETE BARRIER



NAME	DATE

ILLINOIS DEPARTMENT OF TRANSPORTATION
FAI ROUTE 55 (BLACK ROAD TO U.S. 30)
WIDENING AND RESURFACING

**STAGING AND TRAFFIC CONTROL
DETAIL FOR
EMERGENCY PULLOUT**

SCALE: N.T.S. DRAWN BY
DATE 02/23/07 CHECKED BY DDH

TENG TENG & ASSOCIATES, INC.
ENGINEERS/ARCHITECTS/PLANNERS
CHICAGO, ILLINOIS

PLOT DATE = #DATE#
 FILE NAME = #FILE#
 PLOT SCALE = #SCALE#
 PLOT USER = #USER#
 1:500 DRAWING PULLOUT.DGN, 1:500PULLOUT.DSN
 2:30:28071, 10:02:003 C:\ACT\102\102303\CIVIL\DRAWING\102303\102303.DSN