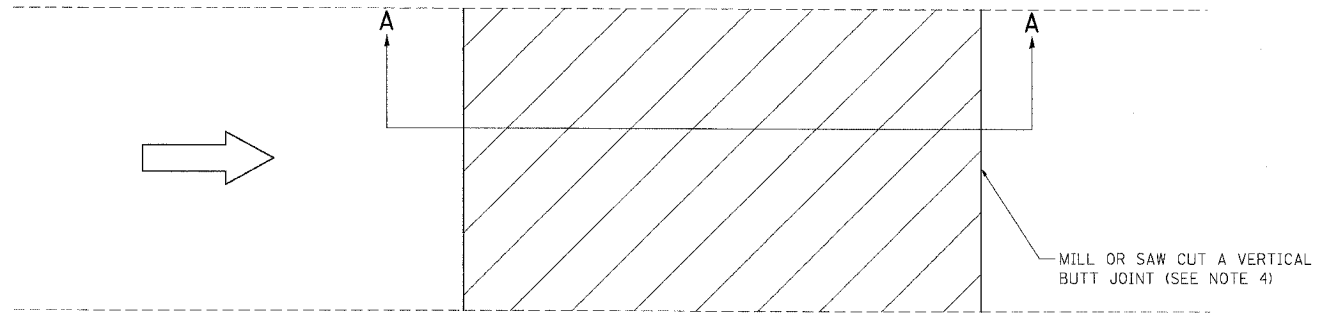
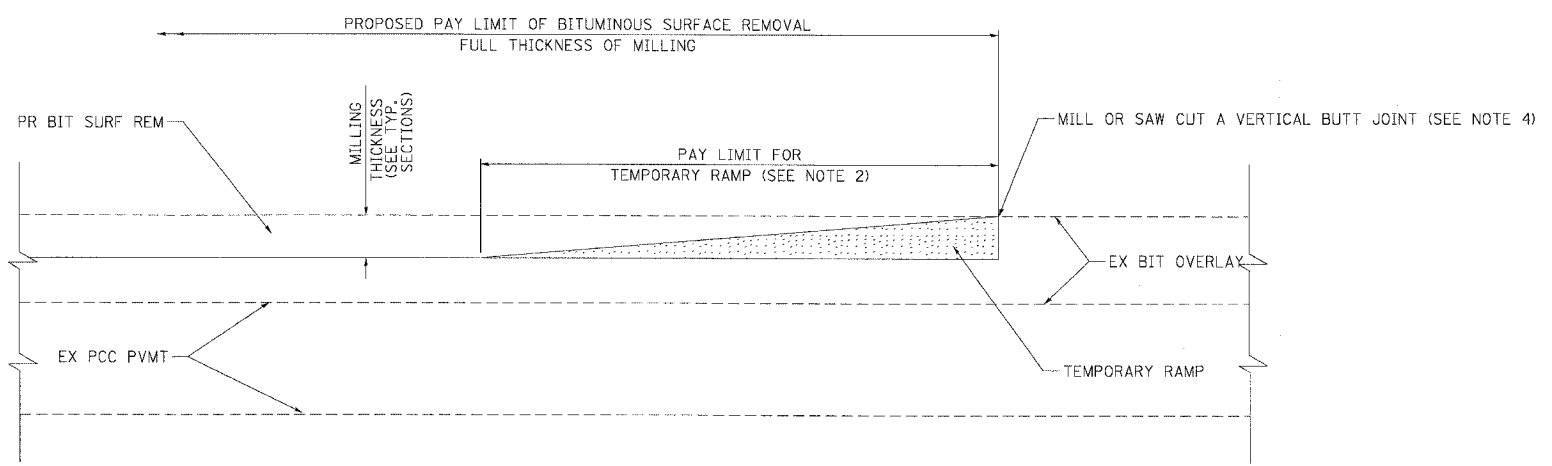


F.A.I. RTE.	SECTION	COUNTY	TOTAL SHEETS	SHEET NO.
55	99 (1&2) WRS-2	WILL	228	106
STA.		TO STA.		
FED. ROAD DIST. NO.		ILLINOIS FED. AID PROJECT		

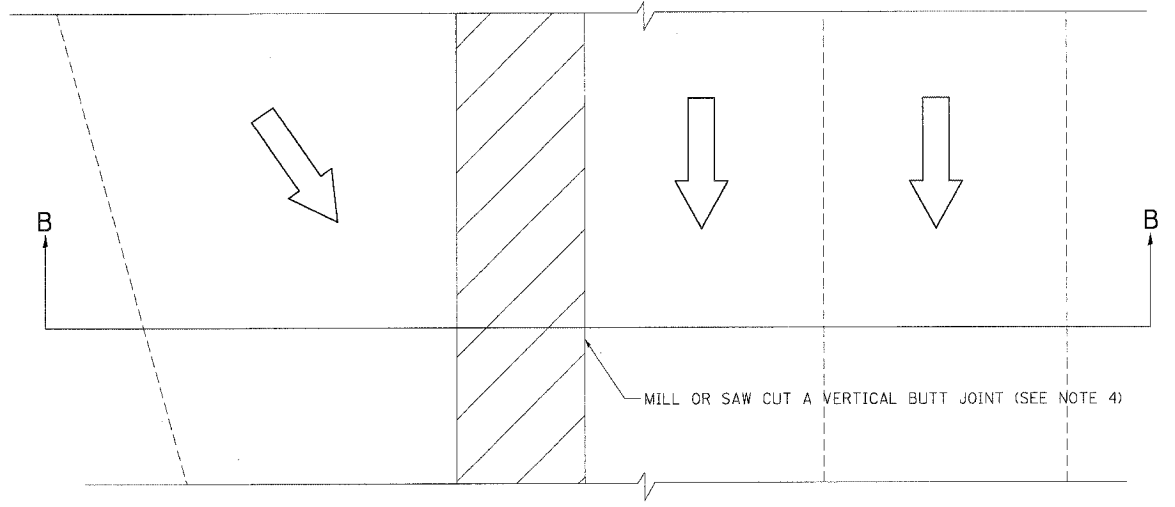


PLAN

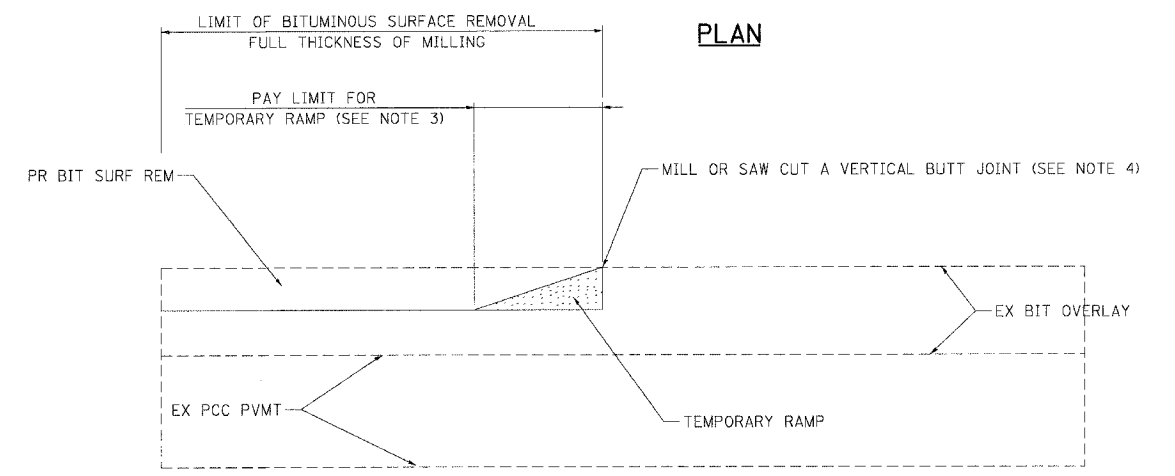


SECTION A-A

**ROADWAY DETAILS FOR TEMPORARY RAMPS FOR MAINLINE TRAFFIC**  
**DOWNSTREAM RAMP SHOWN (UPSTREAM RAMP SIMILAR)**



PLAN



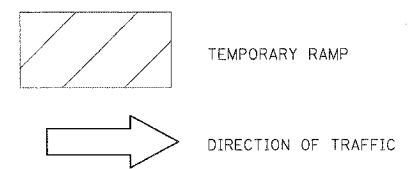
SECTION B-B

**ROADWAY DETAILS FOR MERGING AND DIVERGING TRAFFIC**  
**DOWNSTREAM MERGING RAMP SHOWN (UPSTREAM DIVERGING RAMP SIMILAR)**

**NOTES**

1. PRIOR TO OPENING BITUMINOUS SURFACE REMOVAL AREAS TO TRAFFIC, TEMPORARY RAMPS SHALL BE CONSTRUCTED AND MAINTAINED AT BOTH THE UPSTREAM AND DOWNSTREAM ENDS OF THE SURFACE REMOVAL AREAS OPEN TO TRAFFIC.
2. TAPER THE TEMPORARY RAMP AT A RATE OF 40 INCHES PER INCH OF MILLING THICKNESS.
3. WHERE THE TEMPORARY RAMP IS AT A SKEW TO THE MAINLINE ALIGNMENT, SUCH AS AT ENTRANCE AND EXIT RAMPS, TAPER THE TEMPORARY RAMP AT A RATE OF 12 INCHES PER INCH OF MILLING THICKNESS OR AS DIRECTED BY THE ENGINEER
4. INSTALLATION, MAINTENANCE AND REMOVAL OF THE TEMPORARY RAMP INCLUDING THE COST TO MILL OR SAW CUT TO PROVIDE A VERTICAL EDGE AS SHOWN, WILL NOT BE PAID FOR SEPARATELY BUT SHALL BE INCLUDED IN THE CONTRACT UNIT PRICE FOR "TEMPORARY RAMP".
5. CONSTRUCTION OF THE TEMPORARY RAMP SHALL BE IN ACCORDANCE WITH THE APPLICABLE PORTIONS OF SECTION 406 OF THE STANDARD SPECIFICATIONS.

**LEGEND**



REVISIONS	
NAME	DATE

ILLINOIS DEPARTMENT OF TRANSPORTATION  
 I-55 (BLACK ROAD TO U.S. 30)  
 WIDENING AND RESURFACING

**STAGING AND TRAFFIC CONTROL  
 DETAIL FOR  
 TEMPORARY RAMP**

SCALE: NTS  
 DATE 02/23/07  
**TENG**

DRAWN BY MRK  
 CHECKED BY KA  
 TENG & ASSOCIATES, INC.  
 ENGINEERS/ARCHITECTS/PLANNERS  
 CHICAGO, ILLINOIS

PLOT DATE = 02/23/07  
 FILE NAME = I:\PROJECTS\60B46\DWG\STAGING.DWG  
 USER NAME = MRSB  
 2:28:20 PM 2/23/07  
 S:\DOCUMENTS\60B46\CIVIL\JOB\DWG\STAGING.DWG