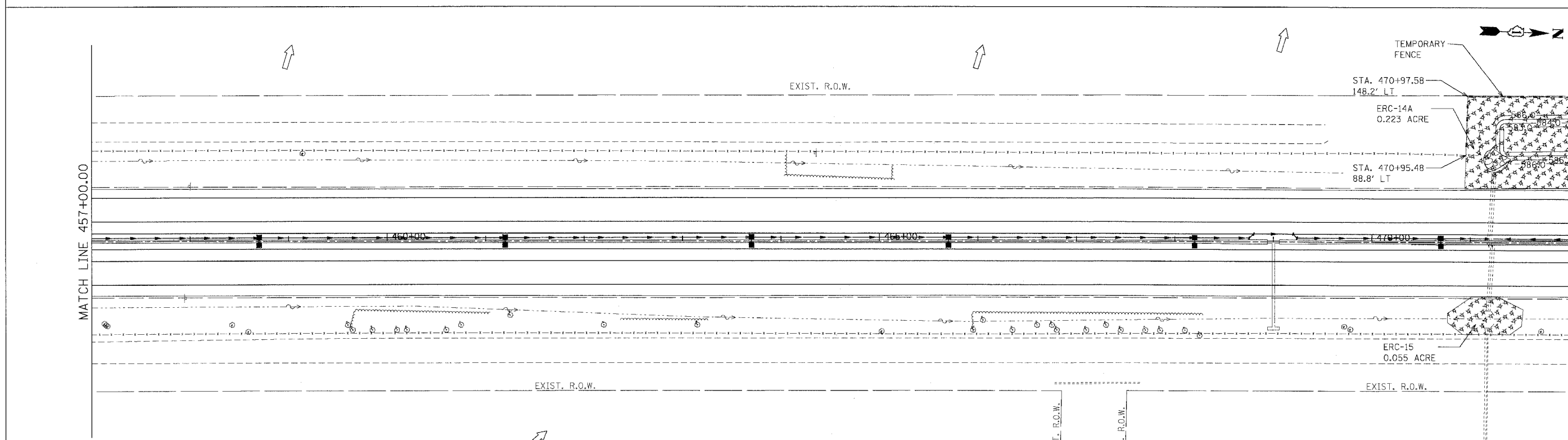
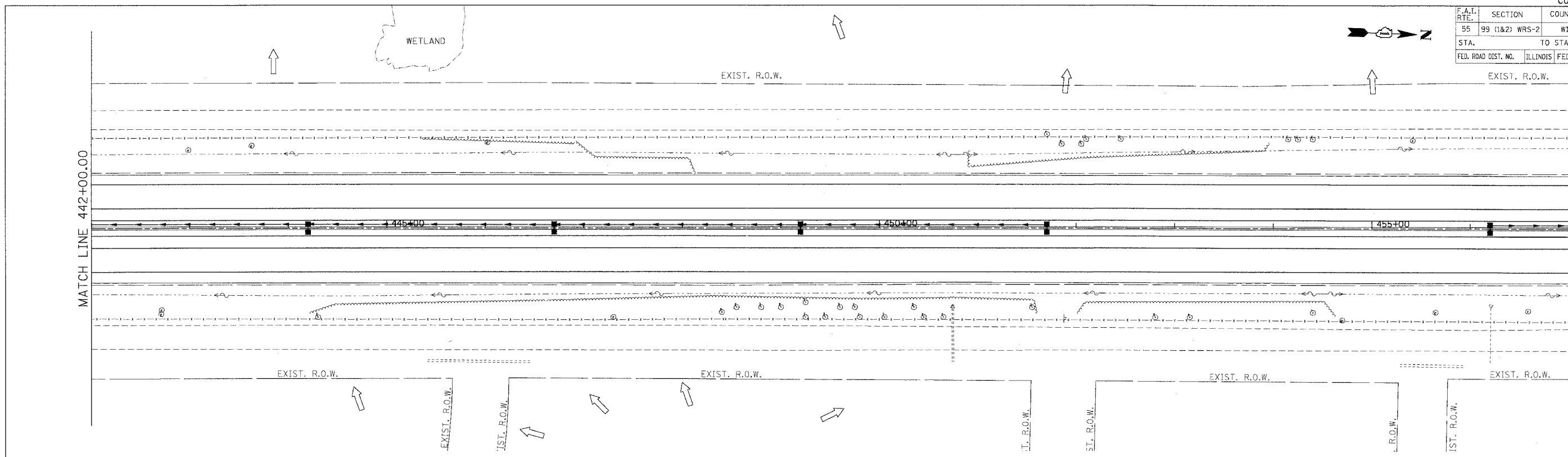


PLT DATE = 03/15/07  
FILE NAME = I:\PROJECTS\FAI 55\DRAWINGS\FAI 55\EROSION AND SEDIMENT CONTROL\FAI 55\ERSI.DWG  
USER NAME = BURGESS  
3/15/2007 12:12:23 GARCIAZ SA\DOCUMENT\02231818\1\CT\1\ODAN\CDR\0811.SHT

CONTRACT NO. 60B46

F.A.I. RTE.	SECTION	COUNTY	TOTAL SHEETS	SHEET NO.
55	99 (1&2) WRS-2	WILL	228	110
STA.		TO STA.		
FED. ROAD DIST. NO.	ILLINOIS	FED. AID PROJECT		



**LEGEND**

- ◆ INLET FILTERS
- ◇ TEMPORARY DITCH CHECK
- ▨ TEMPORARY EROSION CONTROL SEEDING AND MULCH METHOD 2
- ▨ RIPRAP CLASS A3 & A4
- TEMPORARY SILT FENCE

**NOTES:**

1. FOR PERMANENT STRUCTURE, PERMANENT PIPE AND SEDIMENT CONTROL INLET FILTER, SEE DRAINAGE SCHEDULES, SHEETS 129 TO 133.

- ➡ OUTLET
- ➡ SHEET FLOW

REVISIONS	
NAME	DATE

MORCOM, N.V., INC.  
CONSULTING ENGINEERS  
CHICAGO, ILLINOIS

ILLINOIS DEPARTMENT OF TRANSPORTATION  
FAI ROUTE 55 (BLACK ROAD TO U.S. 30)  
WIDENING AND RESURFACING

**EROSION AND SEDIMENT CONTROL  
FAI 55  
STA. 442+00.00 TO STA. 472+00.00**

SCALE: 1"=50'  
DATE: 03/15/07

DRAWN BY: SN  
CHECKED BY: TKL

**TENG**  
TENG & ASSOCIATES, INC.  
ENGINEERS/ARCHITECTS/PLANNERS  
CHICAGO, ILLINOIS