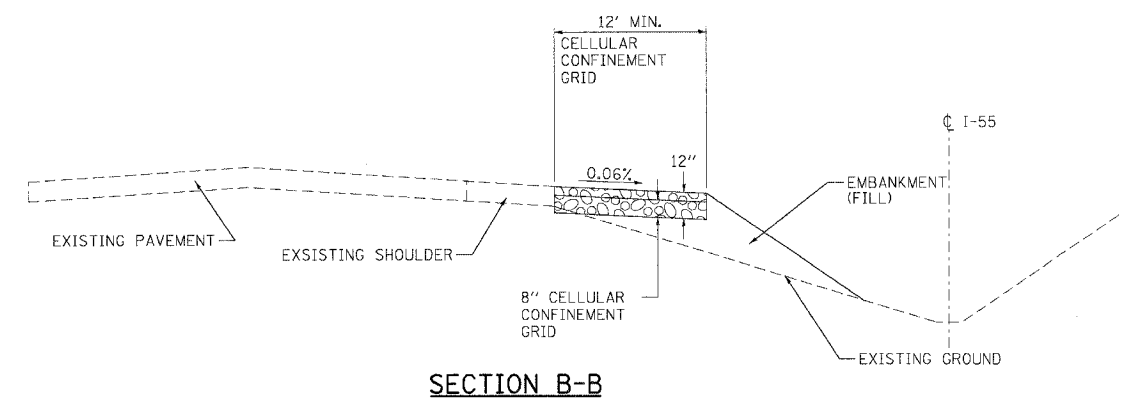
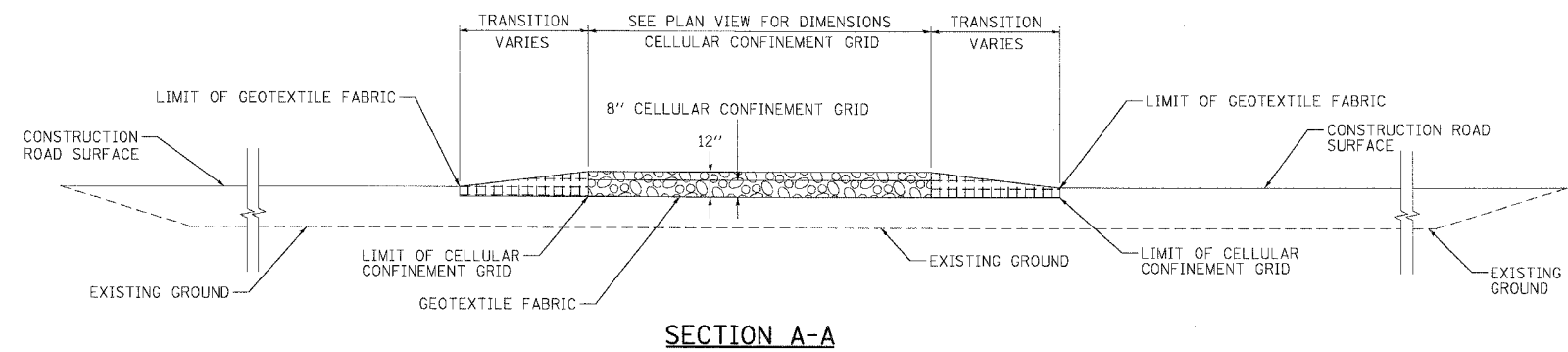
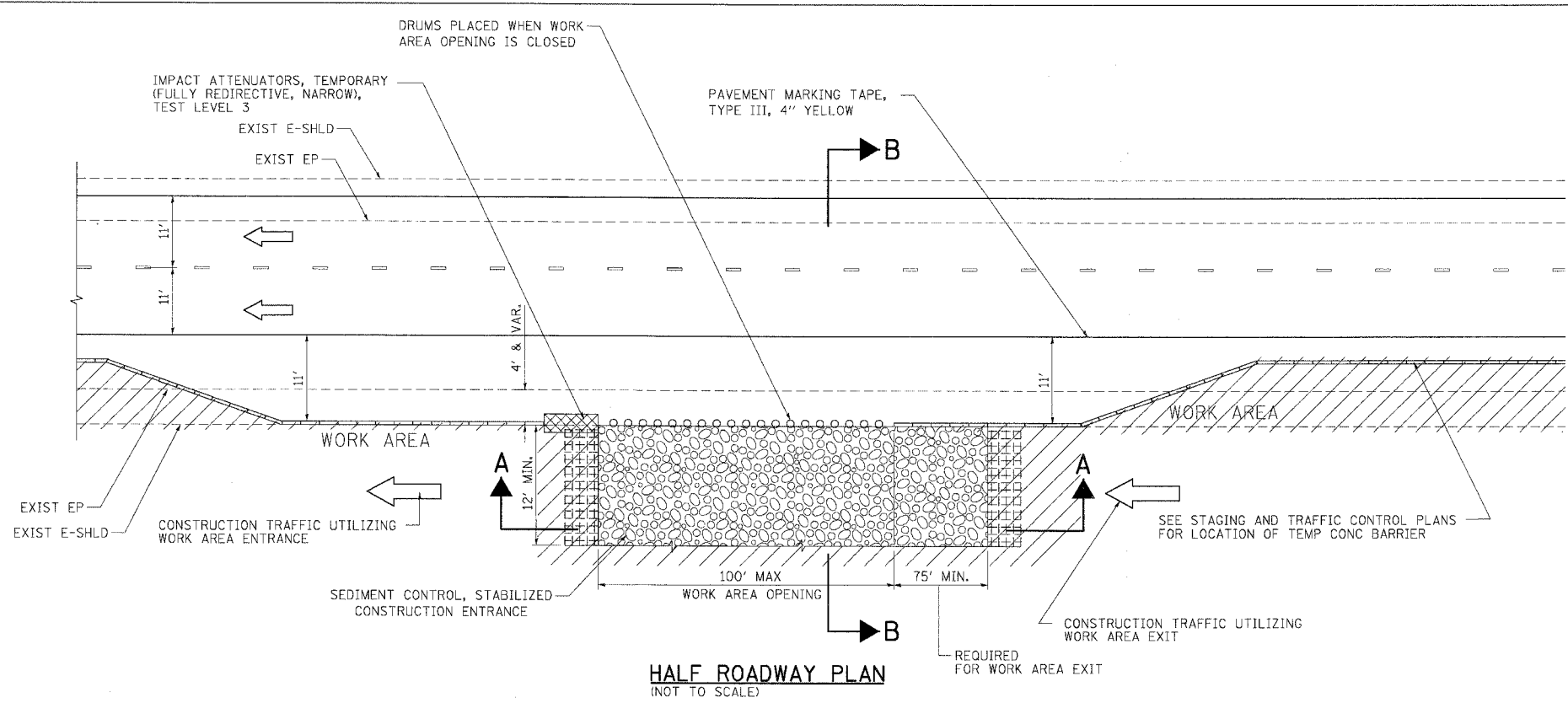
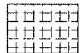

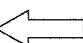
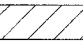



F.A.I. RTE.	SECTION	COUNTY	TOTAL SHEETS	SHEET NO.
55	99 (1&2) WRS-2	WILL	228	115
STA.		TO STA.		
FED. ROAD DIST. NO.		ILLINOIS FED. AID PROJECT		



LEGEND:

-  COURSE AGGREGATE CA-3
-  SEDIMENT CONTROL, STABILIZED CONSTRUCTION ENTRANCE
-  DIRECTION OF TRAFFIC
-  WORK AREA
-  IMPACT ATTENUATOR

NOTES:

1. THE EXISTING BITUMINOUS SHOULDER SHALL REMAIN IN THE PLACE UNTIL THE STABILIZED CONSTRUCTION ENTRANCE IS REMOVED.
2. EXISTING DITCH DRAINAGE TO BE MAINTAINED.
3. THE COST OF ANY COURSE AGGREGATE CA-3 USED FOR TRANSITION FROM THE CONSTRUCTION ROAD TO THE STABILIZED CONSTRUCTION ENTRANCE WILL NOT BE PAID FOR SEPARATELY, BUT SHALL BE INCLUDED IN THE UNIT PRICE BID FOR "SEDIMENT CONTROL, STABILIZED CONSTRUCTION ENTRANCE".
4. SEE STAGING AND TRAFFIC CONTROL DETAIL FOR WORK AREA DRIVEWAY ENTRANCE/EXIT.
5. THE SEDIMENT CONTROL, STABILIZED CONSTRUCTION ENTRANCE DIMENSIONS SHALL BE APPROVED BY THE ENGINEER.

REVISIONS	
NAME	DATE

ILLINOIS DEPARTMENT OF TRANSPORTATION
 FAI ROUTE 55 (BLACK ROAD TO U.S. 30)
 WIDENING AND RESURFACING

**EROSION AND SEDIMENT CONTROL
 STABILIZED CONSTRUCTION
 ENTRANCE**

SCALE: N.T.S. DRAWN BY JP
 DATE 02/23/07 CHECKED BY DDH

TENG TENG & ASSOCIATES, INC.
 ENGINEERS/ARCHITECTS/PLANNERS
 CHICAGO, ILLINOIS

MORCOM, N.V., INC.
 CONSULTING ENGINEERS
 CHICAGO, ILLINOIS

PLOT DATE = 02/23/07
 FILE NAME = 021115.dwg
 USER NAME = JGIBSON
 A:\PROJECTS\021115\021115.dwg
 2-23-2007, 10:50:01 AM
 SANDOCUMENT\021115\CIVIL\WORK\021115\021115.dwg