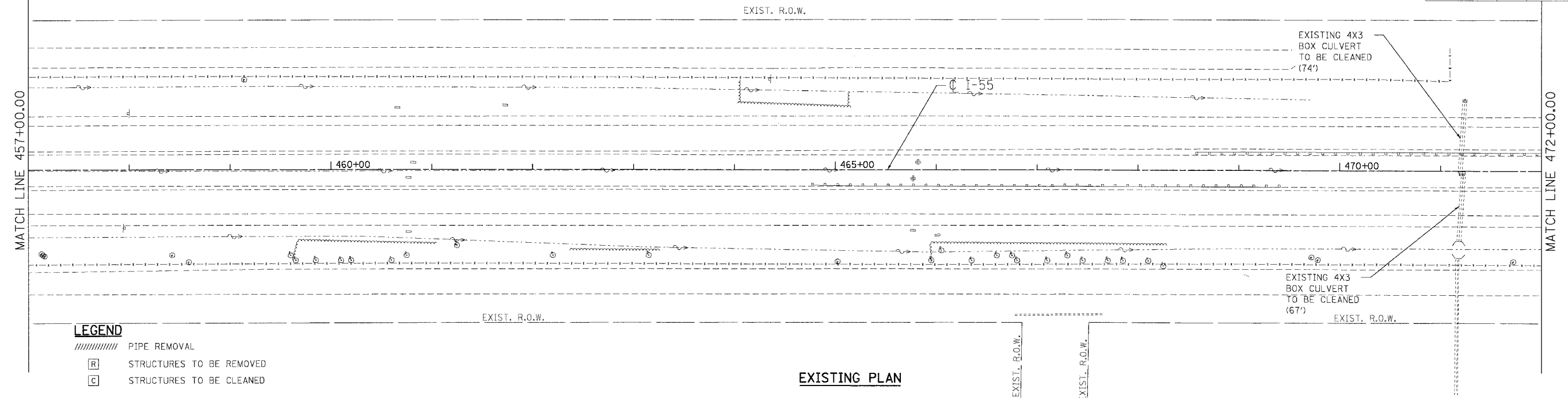


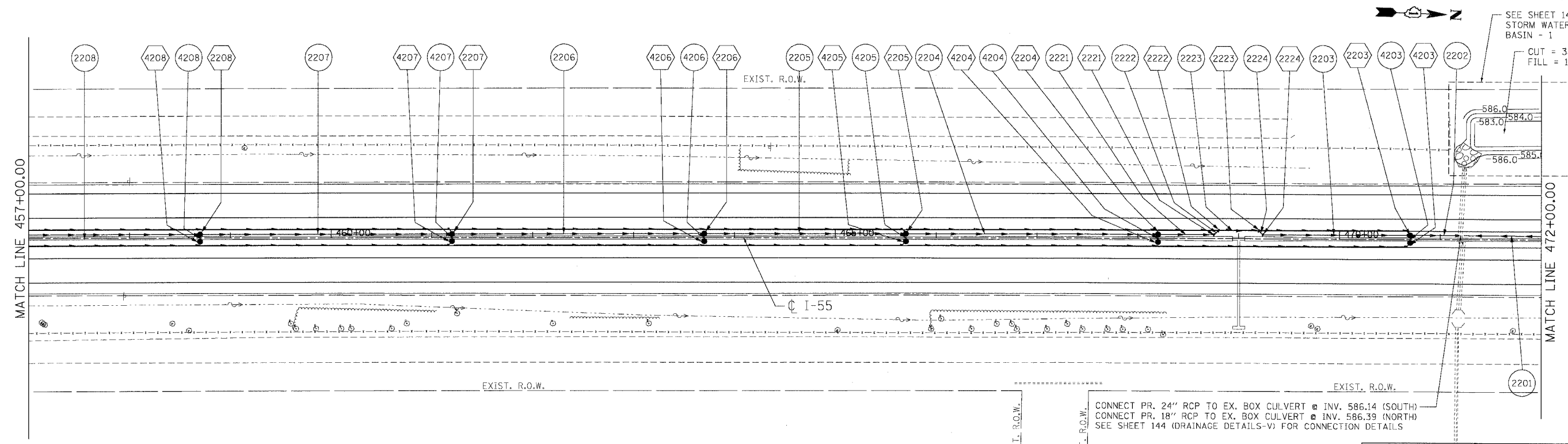
PLT DATE = 8/14/07
 FILE NAME = 60B46.DWG
 USER NAME = RUSBR
 N:\SPR\0801.DWG...
 3-15-2007, 12:14:07

CONTRACT NO. 60B46

F.A.I. RTE.	SECTION	COUNTY	TOTAL SHEETS	SHEET NO.
55	99 (1&2) WRS-2	WILL	228	121
STA.		TO STA.		
FED. ROAD DIST. NO.	ILLINOIS	FED. AID PROJECT		



- LEGEND**
- ////// PIPE REMOVAL
 - [R] STRUCTURES TO BE REMOVED
 - [C] STRUCTURES TO BE CLEANED



- LEGEND**
- (100) STRUCTURE NUMBER
 - (100) GR GRATING FOR STRUCTURE
 - (100) PIPE NUMBER
 - STORM SEWER
 - CATCH BASIN
 - MANHOLE
 - ▲ FLARED END SECTION
 - ⌋ HEADWALL
 - PIPE UNDERDRAINS

NOTES

- FOR STRUCTURE AND PIPE INFORMATION SEE DRAINAGE SCHEDULES, SHEETS 129, 130, 131, 132, AND 133.
- PROPOSED SEWER AND CULVERT CROSSING BENEATH THE EXISTING PAVEMENT SHALL BE CONSTRUCTED DURING PRE-STAGE PER THE STAGING AND TRAFFIC CONTROL PLANS. SEE ROADWAY PLANS FOR PATCHING DETAILS.

CONNECT PR. 24" RCP TO EX. BOX CULVERT @ INV. 586.14 (SOUTH)
 CONNECT PR. 18" RCP TO EX. BOX CULVERT @ INV. 586.39 (NORTH)
 SEE SHEET 144 (DRAINAGE DETAILS-V) FOR CONNECTION DETAILS

SEE SHEET 140 FOR STORM WATER QUALITY BASIN - 1
 CUT = 382 CU. YD.
 FILL = 1 CU. YD.

REVISIONS	
NAME	DATE

ILLINOIS DEPARTMENT OF TRANSPORTATION
 FAI ROUTE 55 (BLACK ROAD TO U.S. 30)
 WIDENING AND RESURFACING
DRAINAGE AND UTILITY PLAN
FAI 55
STA. 457+00.00 TO STA. 472+00.00

SCALE: 1"=50'
 DATE 03/15/07
 DRAWN BY MRK
 CHECKED BY TKL

TENG
 TENG & ASSOCIATES, INC.
 ENGINEERS/ARCHITECTS/PLANNERS
 CHICAGO, ILLINOIS