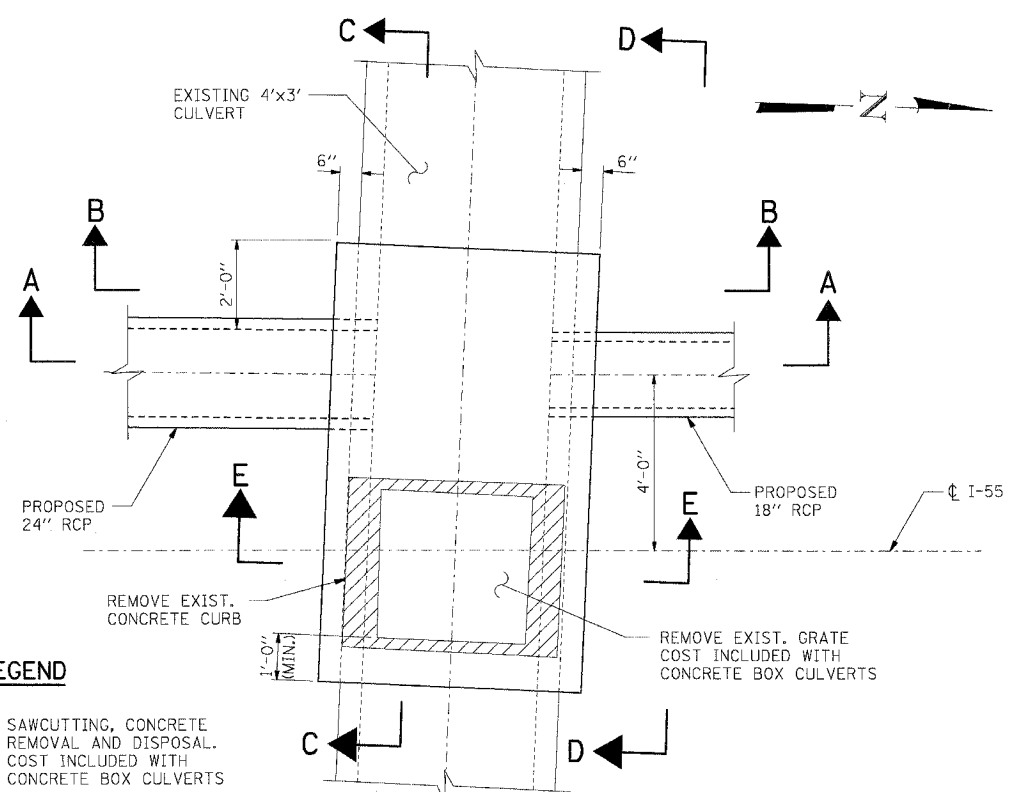


F.A.I. RTE.	SECTION	COUNTY	TOTAL SHEETS	SHEET NO.
55	99 (1&2) WRS-2	WILL	228	144
STA.	TO STA.			
FED. ROAD DIST. NO.	ILLINOIS FED. AID PROJECT			

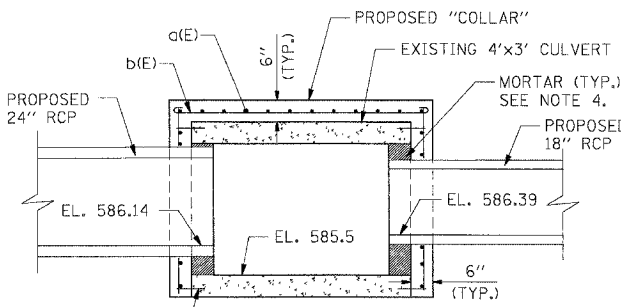


TOP PLAN
(SHOWING GEOMETRY)

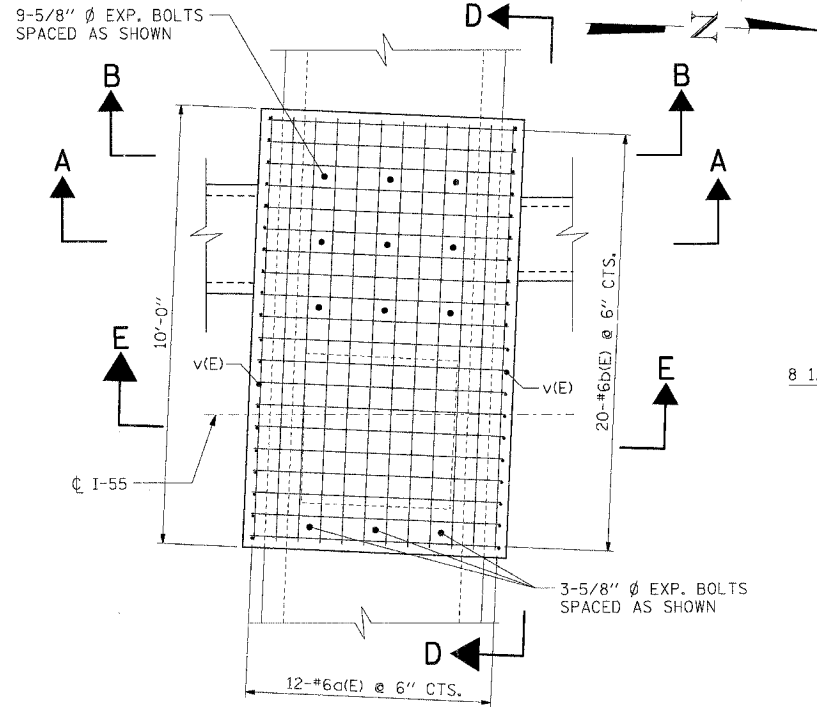
LEGEND



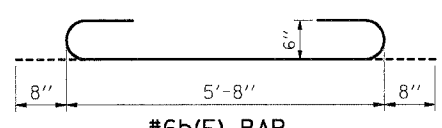
SAWCUTTING, CONCRETE REMOVAL AND DISPOSAL. COST INCLUDED WITH CONCRETE BOX CULVERTS



SECTION A-A

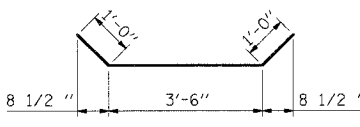


TOP PLAN
(SHOWING REINFORCEMENT)



#6b(E) BAR

TILT HOOK AS NECESSARY TO MAINTAIN 1 1/2" CLEAR COVER.



#6z(E) BAR

BEND BARS AS NECESSARY TO MAINTAIN 2" CLEAR COVER.

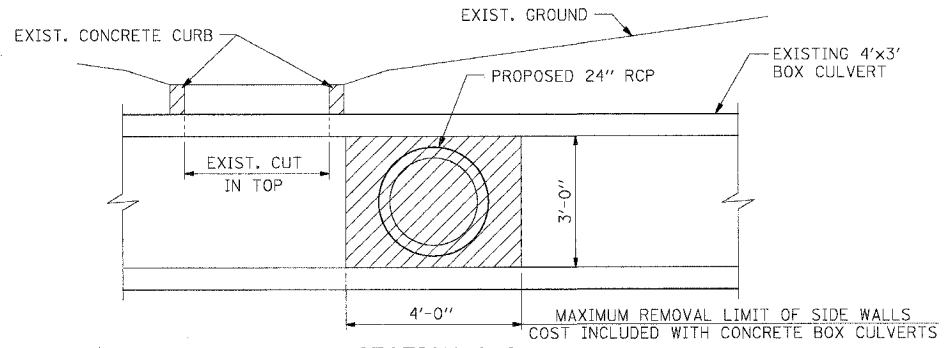
BAR LIST

BAR	NO.	SIZE	LENGTH	SHAPE
a(E)	12	#6	9'-8"	—
b(E)	20	#6	7'-0"	—
h(E)	26	#6	9'-8"	—
h1(E)	8	#6	5'-6"	—
v(E)	48	#6	4'-2"	—

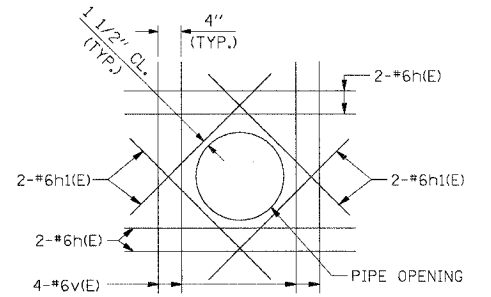
BILL OF MATERIAL

ITEM	UNIT	TOTAL
CONCRETE BOX CULVERTS	CU. YD.	2.5
REINFORCEMENT BARS, EPOXY COATED	POUND	1,130
EXPANSION BOLTS 5/8 INCH **	EACH	40

** EXPANSION BOLTS SHALL BE IN ACCORDANCE WITH 1006.09 OF THE STANDARD SPECIFICATIONS.

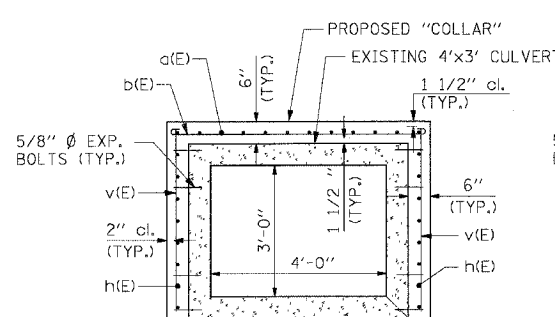


SECTION C-C
(SHOWING REMOVAL)

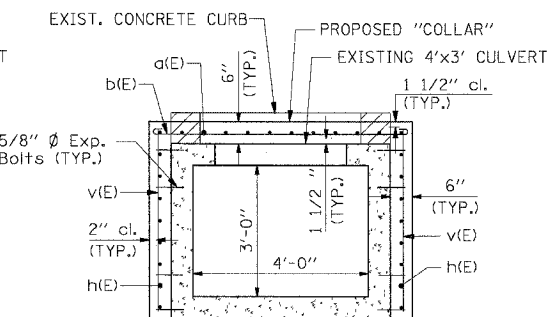


TYPICAL REINFORCEMENT DETAIL AROUND OPENINGS

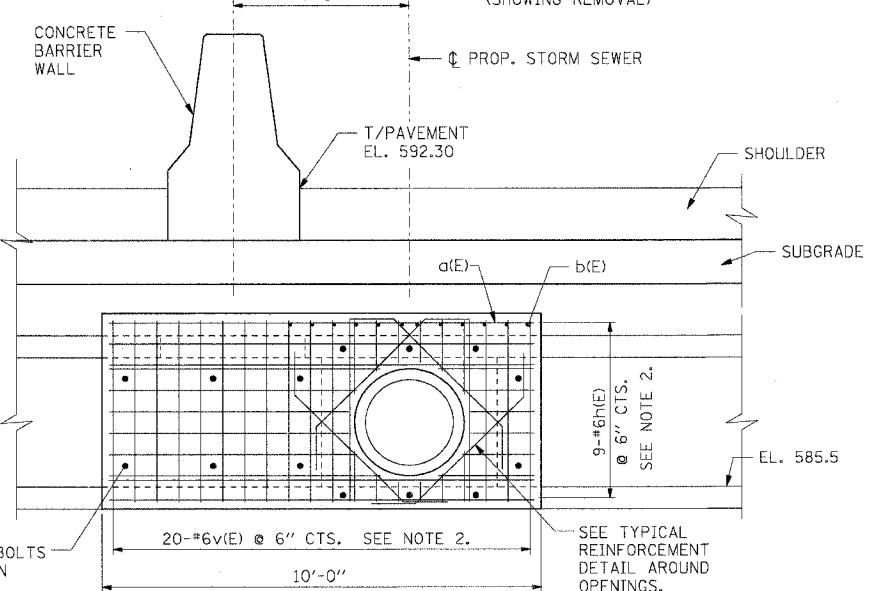
BEND BARS IN FIELD AS NECESSARY TO MAINTAIN 2" CLEAR COVER.



SECTION B-B
(SHOWING REINFORCEMENT)



SECTION E-E
(SHOWING REINFORCEMENT)



SECTION D-D
(SHOWING REINFORCEMENT)

NOTES:

- REINFORCEMENT BARS DESIGNATED (E) SHALL BE EPOXY COATED.
- CUT BARS IN FIELD AS NECESSARY FOR PIPE OPENINGS.
- PLANS OF THE EXISTING 3' x 4' CULVERT ARE NOT AVAILABLE.
- PRIOR TO CASTING PROPOSED "COLLAR", FILL VOID AROUND PROPOSED PIPES WITH MORTAR. COST INCLUDED WITH CONCRETE BOX CULVERTS.

REVISIONS	
NAME	DATE

ILLINOIS DEPARTMENT OF TRANSPORTATION
FAI ROUTE 55 (BLACK ROAD TO U.S. 30)
WIDENING AND RESURFACING

DRAINAGE DETAILS - V CULVERT MODIFICATION STA. 471+21

SCALE: N.T.S. DRAWN BY: MDB
DATE: 02/23/07 CHECKED BY: MJK



PLOT DATE = 02/23/07
 FILE NAME = 022307.DWG
 PLOT SCALE = 1/8"=1'-0"
 PLOT AREA = 11.5000
 PLOT DATE = 02/23/07
 FILE NAME = 022307.DWG
 PLOT SCALE = 1/8"=1'-0"
 PLOT AREA = 11.5000