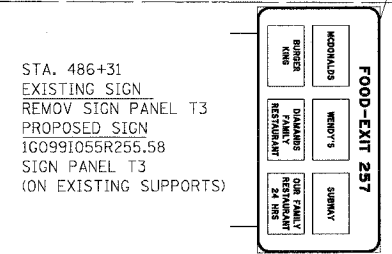
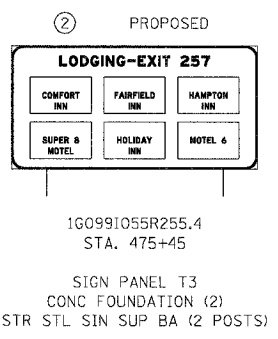
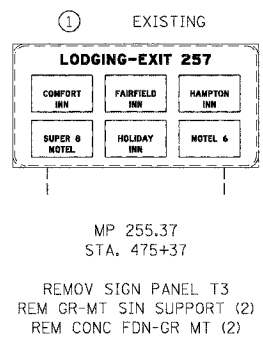
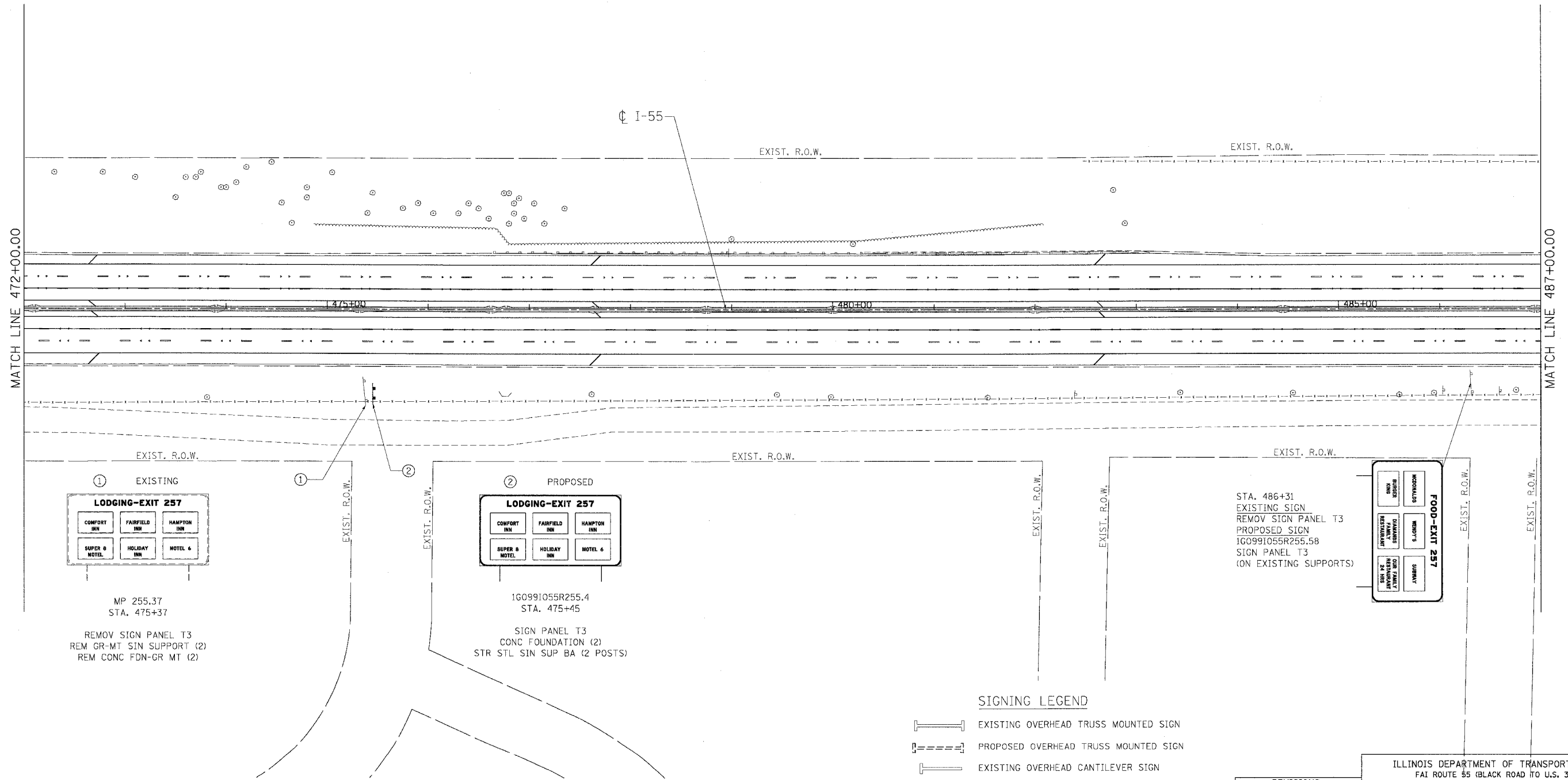


F.A.I. RTE.	SECTION	COUNTY	TOTAL SHEETS	SHEET NO.
55	99 (1&2) WRS-2	WILL	228	163
STA.		TO STA.		
FED. ROAD DIST. NO.		ILLINOIS	FED. AID PROJECT	



- SIGNING LEGEND**
- EXISTING OVERHEAD TRUSS MOUNTED SIGN
 - PROPOSED OVERHEAD TRUSS MOUNTED SIGN
 - EXISTING OVERHEAD CANTILEVER SIGN
 - PROPOSED OVERHEAD CANTILEVER SIGN
 - EXISTING GROUND MOUNTED SIGN (1 POSTS)
 - EXISTING GROUND MOUNTED SIGN (2 POSTS)
 - PROPOSED GROUND MOUNTED SIGN (2 POSTS)
 - PROPOSED DYNAMIC MESSAGE SIGN

REVISIONS	
NAME	DATE

ILLINOIS DEPARTMENT OF TRANSPORTATION
FAI ROUTE 55 (BLACK ROAD TO U.S. 30)
WIDENING AND RESURFACING

SIGNING PLAN
FAI 55
STA. 472+00.00 TO STA. 487+00.00

SCALE: 1"=50'
DATE 02/23/07
DRAWN BY MW
CHECKED BY DDH

TENG TENG & ASSOCIATES, INC.
ENGINEERS/ARCHITECTS/PLANNERS
CHICAGO, ILLINOIS

PLOT DATE = 02/23/07
 FILE NAME = I:\PROJECTS\60B46\DRAWING\60B46_SIGNING_PLAN.DWG
 USER NAME = JGIBSON
 2-23-2007 1:00:19
 C:\PROGRAMS\AUTOCAD\ACAD.LSP
 S:\DOCUMENT\60B46\DRAWING\60B46_SIGNING_PLAN.DWG
 S:\PROJECTS\60B46\DRAWING\60B46_SIGNING_PLAN.DWG
 S:\PROJECTS\60B46\DRAWING\60B46_SIGNING_PLAN.DWG
 S:\PROJECTS\60B46\DRAWING\60B46_SIGNING_PLAN.DWG