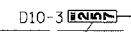


F.A.I. RTE.	SECTION	COUNTY	TOTAL SHEETS	SHEET NO.
55	99 (1&2) WRS-2	WILL.	228	169
STA.		TO STA.		
FED. ROAD DIST. NO.		ILLINOIS FED. AID PROJECT		

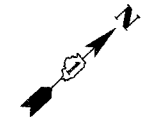
STA. 562+53  
EXISTING SIGN  
REMOV SIN PAN ASSY TB  
PROPOSED SIGN  
SIGN PANEL T2  
WOOD SIN SUPPORT



STA. 563+60  
EXISTING SIGN  
REMOV SIN PAN ASSY TA  
PROPOSED SIGN  
MILEPOST MKR ASSEMBLY



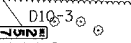
I-55  
EXIST. R.O.W.



MATCH LINE 562+00.00

MATCH LINE 577+00.00

STA. 563+57  
EXISTING SIGN  
REMOV SIN PAN ASSY TA  
PROPOSED SIGN  
MILEPOST MKR ASSEMBLY

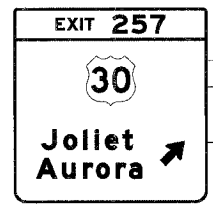


EXIST. R.O.W.

W13-3  
(ON LIGHT POLE)



STA. 527+83  
EXISTING SIGN  
REMOV SIGN PANEL T2  
PROPOSED SIGN  
SIGN PANEL T2



STA. 572+08  
EXISTING SIGN  
REMOV SIGN PANEL T3  
PROPOSED SIGN  
1G0991055R257.2  
SIGN PANEL T3  
(ON EXISTING CANTILEVER TRUSS)

SIGNING LEGEND

- EXISTING OVERHEAD TRUSS MOUNTED SIGN
- PROPOSED OVERHEAD TRUSS MOUNTED SIGN
- EXISTING OVERHEAD CANTILEVER SIGN
- PROPOSED OVERHEAD CANTILEVER SIGN
- EXISTING GROUND MOUNTED SIGN (1 POSTS)
- EXISTING GROUND MOUNTED SIGN (2 POSTS)
- PROPOSED GROUND MOUNTED SIGN (2 POSTS)
- PROPOSED DYNAMIC MESSAGE SIGN

REVISIONS	
NAME	DATE

ILLINOIS DEPARTMENT OF TRANSPORTATION  
FAI ROUTE 55 (BLACK ROAD TO U.S. 30)  
WIDENING AND RESURFACING

**SIGNING PLAN**  
FAI 55  
STA. 562+00.00 TO STA. 577+00.00

SCALE: 1"=50'      DRAWN BY MW  
DATE 02/23/07      CHECKED BY DDH

**TENG**      TENG & ASSOCIATES, INC.  
ENGINEERS/ARCHITECTS/PLANNERS  
CHICAGO, ILLINOIS

PLOT DATE = 02/23/07  
 FILE NAME = 022307.DWG  
 PLOT SCALE = 1/4"=1'-0"  
 USER NAME = DDH