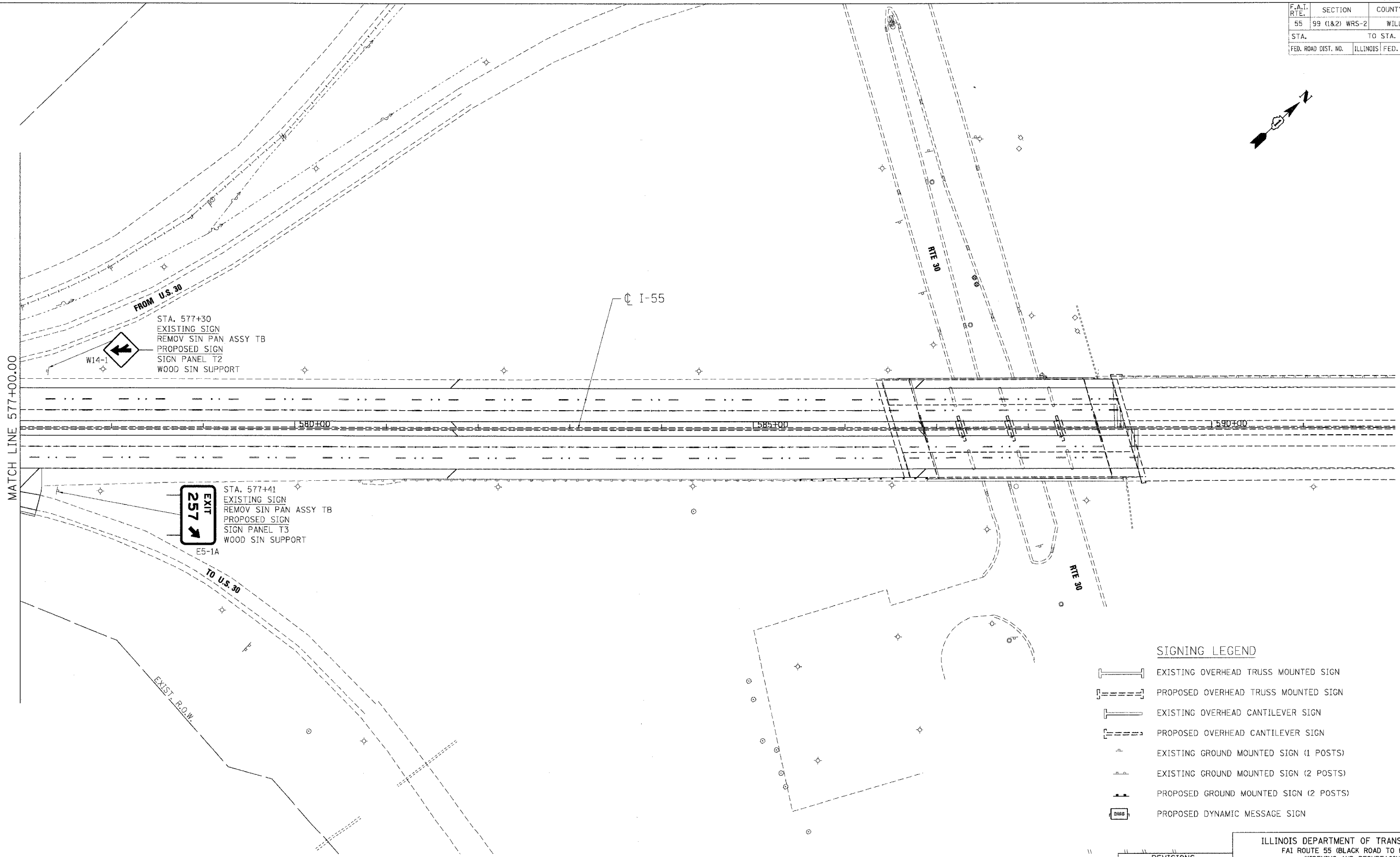
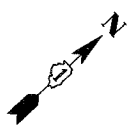


F.A.I. RTE.	SECTION	COUNTY	TOTAL SHEETS	SHEET NO.
55	99 (1&2) WRS-2	WILL	228	170
STA.		TO STA.		
FED. ROAD DIST. NO.		ILLINOIS FED. AID PROJECT		



- SIGNING LEGEND**
- EXISTING OVERHEAD TRUSS MOUNTED SIGN
 - PROPOSED OVERHEAD TRUSS MOUNTED SIGN
 - EXISTING OVERHEAD CANTILEVER SIGN
 - PROPOSED OVERHEAD CANTILEVER SIGN
 - EXISTING GROUND MOUNTED SIGN (1 POSTS)
 - EXISTING GROUND MOUNTED SIGN (2 POSTS)
 - PROPOSED GROUND MOUNTED SIGN (2 POSTS)
 - PROPOSED DYNAMIC MESSAGE SIGN

REVISIONS	
NAME	DATE

ILLINOIS DEPARTMENT OF TRANSPORTATION
 FAI ROUTE 55 (BLACK ROAD TO U.S. 30)
 WIDENING AND RESURFACING

**SIGNING PLAN
 FAI 55
 STA. 577+00.00 TO STA. 592+00.00**

SCALE: 1"=50'
 DATE: 02/23/07
 DRAWN BY: MW
 CHECKED BY: DDH

TENG TENG & ASSOCIATES, INC.
 ENGINEERS/ARCHITECTS/PLANNERS
 CHICAGO, ILLINOIS

PLOT DATE = 02/23/07
 FILE NAME = S:\PROJECTS\60B46\60B46_170.DWG
 PLOT SCALE = 1"=50'
 USER NAME = DDH