

F.A.I. RTE.	SECTION	COUNTY	TOTAL SHEETS	SHEET NO.
55	99 (I&2) WRS-2	WILL	228	179
STA. TO STA.			FED. ROAD DIST. NO. ILLINOIS FED. AID PROJECT	

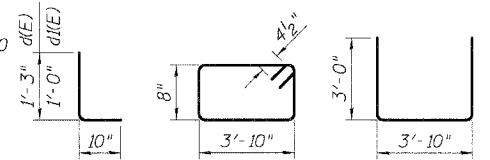
**BAR LIST**

Bar	No.	Size	Length	Shape
d(E)	42	#5	2'-1"	□
d1(E)	84	#5	1'-10"	□
h(E)	28	#5	19'-6"	□
h1(E)	6	#4	5'-8"	□
h2(E)	12	#4	6'-6"	□
h3(E)	6	#4	2'-2"	□
s(E)	28	#4	9'-9"	□
u(E)	14	#5	9'-10"	□
v(E)	54	#5	6'-1"	□

**TOTAL BILL OF MATERIAL**

Item	Unit	Total
Concrete Removal	Cu Yd	13.7
Structure Excavation	Cu Yd	5
Concrete Structures	Cu Yd	11.4
Reinforcement Bars, Epoxy Coated	Lb	1,570
Concrete Sealer	Sq Ft	649
Epoxy Crack Injection	Ft	25
Structural Repair of Concrete (Depth Equal to or Less Than 5")	Sq Ft	218

\*\* Quantity includes top and side surfaces of new concrete.



BAR d(E) and d1(E) BAR s(E) BAR u(E)

**GENERAL NOTES**

- Plan dimensions and details relative to existing structure have been taken from existing plans and are subject to nominal construction variations. It shall be the Contractor's responsibility to verify such dimensions and details in the field and make necessary approved adjustments prior to construction or ordering of materials. Such variations shall not be cause for additional compensation for a change in the scope of the work; however, the Contractor will be paid for the quantity actually furnished at the unit price for the work.
- All construction joints shall be bonded.
- Any reinforcement bars that are damaged during concrete removal operations shall be repaired or replaced using an approved bar splicer or anchorage system. Cost incidental to "Concrete Removal".

SHT. 1 OF 2

REVISIONS	
NAME	DATE

ILLINOIS DEPARTMENT OF TRANSPORTATION  
 FAI ROUTE 55 (BLACK ROAD TO U.S. 30)  
 WIDENING AND RESURFACING  
 CATON FARM ROAD OVER I-55, S.N. 099-0210  
 STA. 199+37.84, SECTION 99 (I&2) WRS-2  
 WILL COUNTY

**PIER 2**

SCALE: as on sheet  
 DATE 02/23/07  
 DRAWN BY MW  
 CHECKED BY MJK  
**TENG**  
 TENG & ASSOCIATES, INC.  
 ENGINEERS/ARCHITECTS/PLANNERS  
 CHICAGO, ILLINOIS

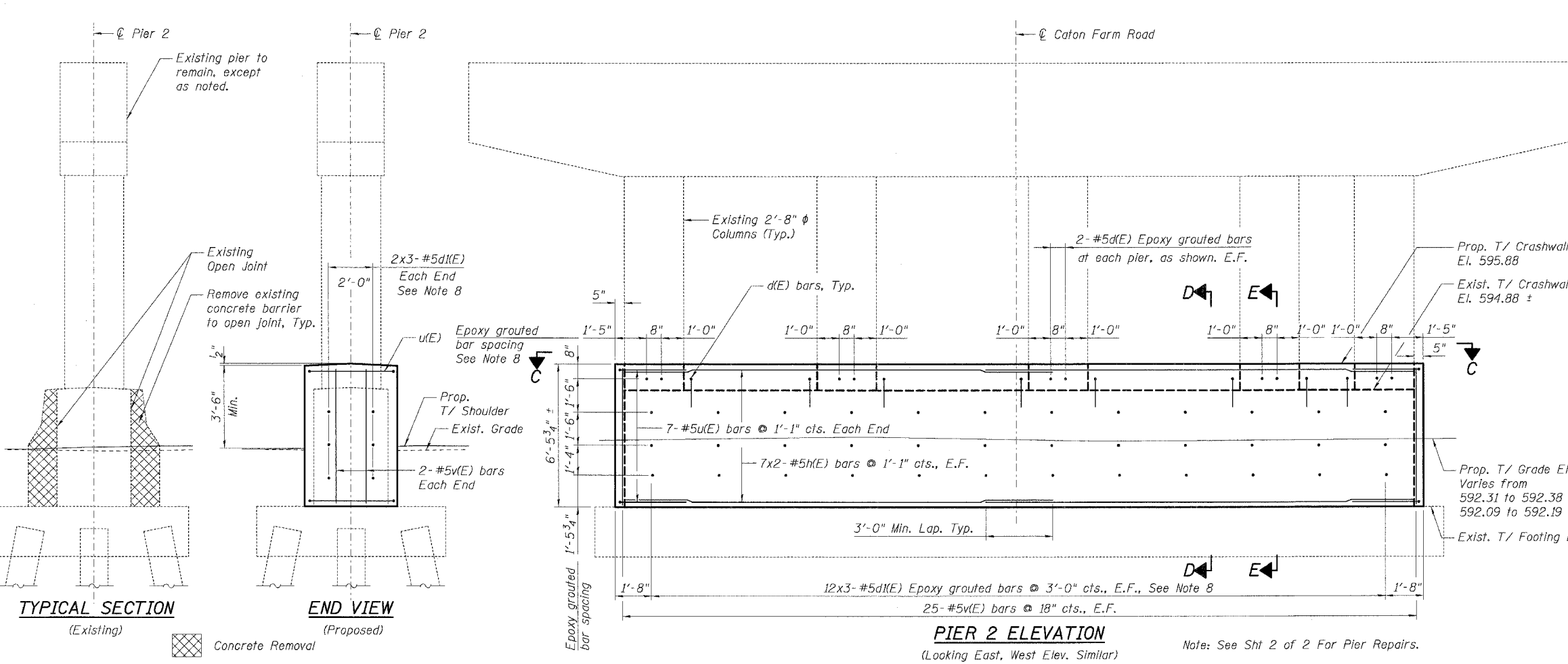
**MORCOM, N.V., INC.**  
 CONSULTING ENGINEERS  
 CHICAGO, ILLINOIS



DATE 11/30/07  
 EXP. 11/30/08

**Notes:**

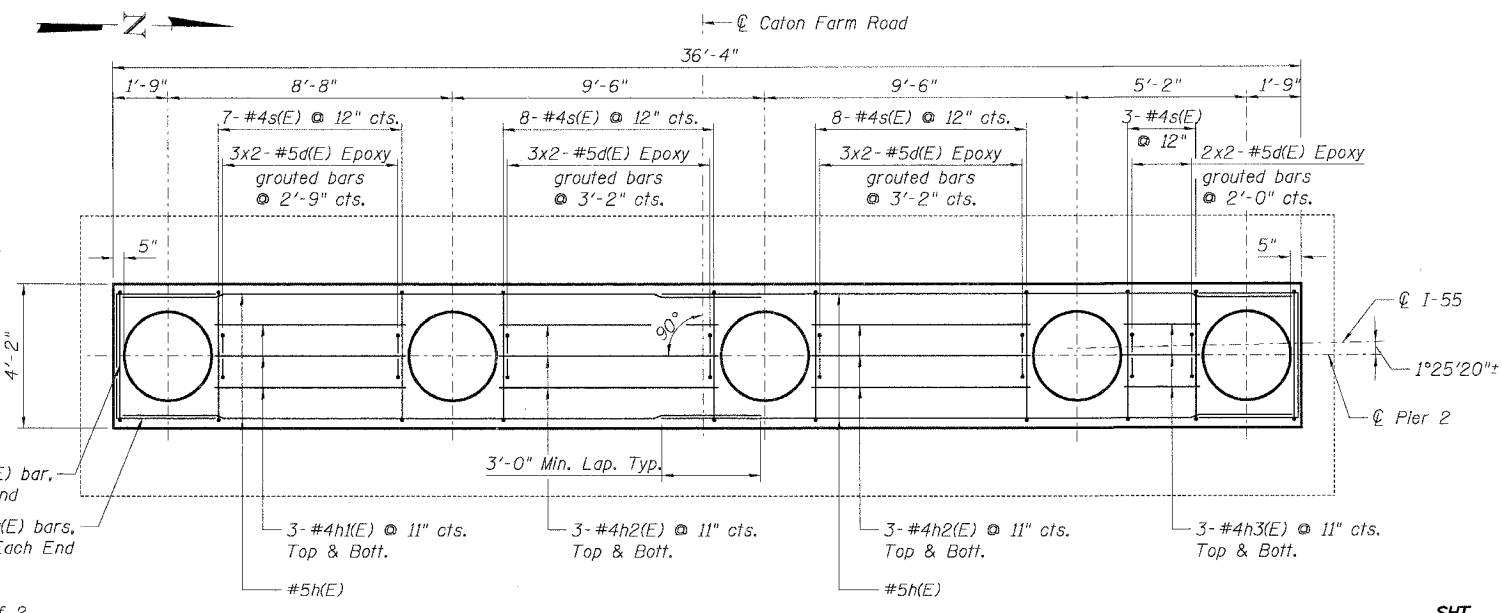
- Work this sheet with Sht. 2 of 2.
- E.F. denotes Each Face.
- All edges shall have 3/4" chamfer unless noted otherwise.
- Bars designated (E) shall be epoxy coated.
- Bars indicated thus 3x2-#5 etc. indicates 3 lines of bars with 2 lengths per line.
- Minimum embedment depth of 9" shall be provided for epoxy grouted bars.
- Epoxy grouted bars shall be in accordance with Article 584 of the Standard Specifications. Cost included with Reinforcement Bars, Epoxy Coated.
- Contractor shall ensure that vertical bars in pier columns are not damaged. Any damage to existing vertical bars in pier columns shall be repaired. Repairs shall be made as directed by the Engineer.



**PIER 2 ELEVATION**

(Looking East, West Elev. Similar)

Note: See Sht 2 of 2 For Pier Repairs.



**PLAN SECTION C-C**

PLOT DATE = #DATE\*  
 FILE NAME = #FILE#\*  
 PLOT SCALE = #SCALE#\*  
 USER NAME = #USER#\*