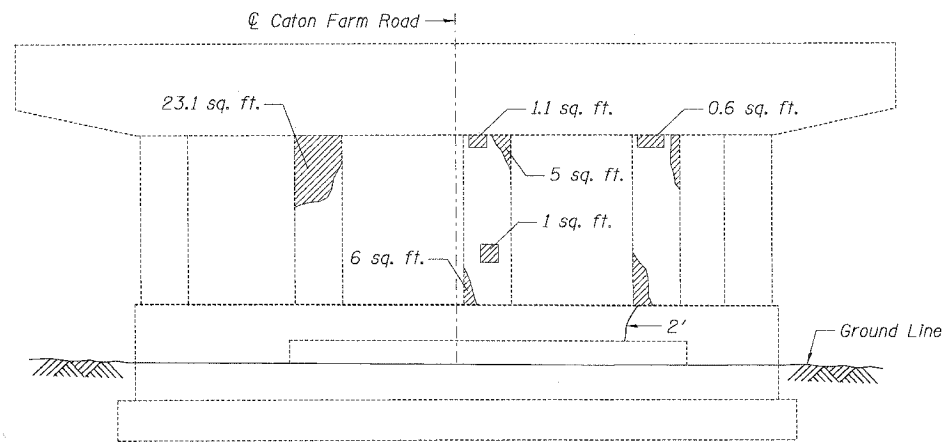
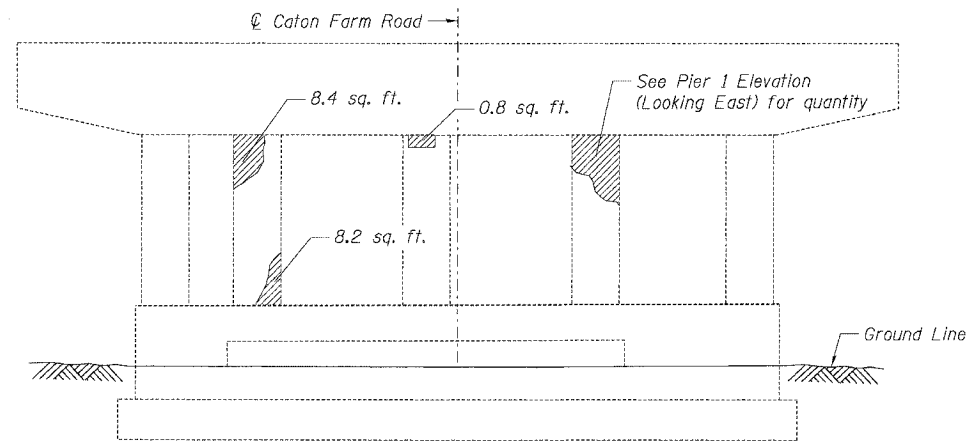


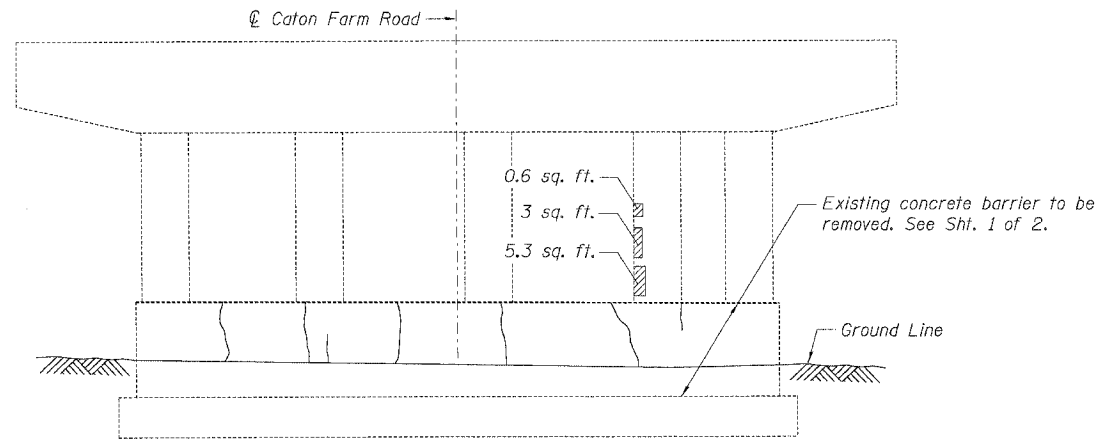
F.A.I. RTE.	SECTION	COUNTY	TOTAL SHEETS	SHEET NO.
55	99 (1&2) WRS-2	WILL	228	180
STA.		TO STA.		
FED. ROAD DIST. NO.		ILLINOIS FED. AID PROJECT		



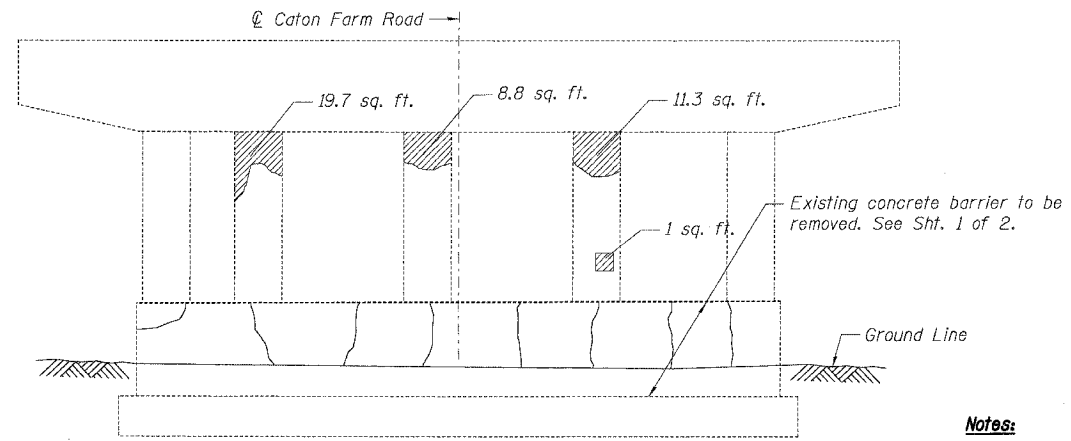
PIER 1 ELEVATION
(Looking East)



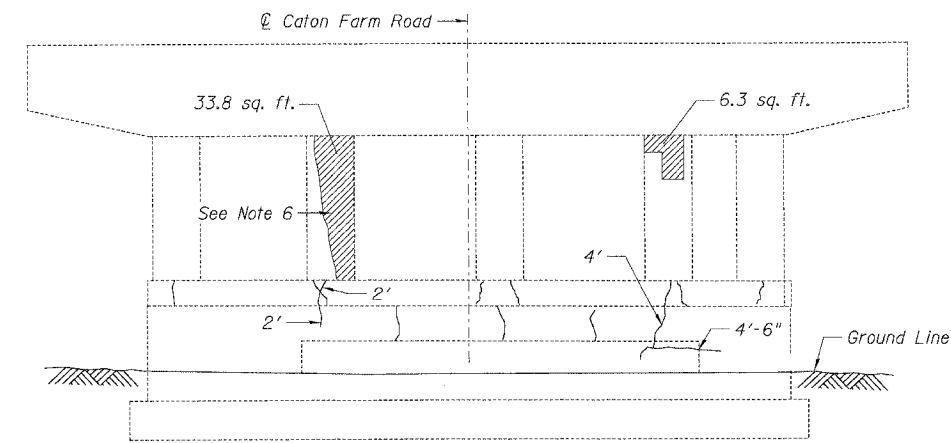
PIER 1 ELEVATION
(Looking West)



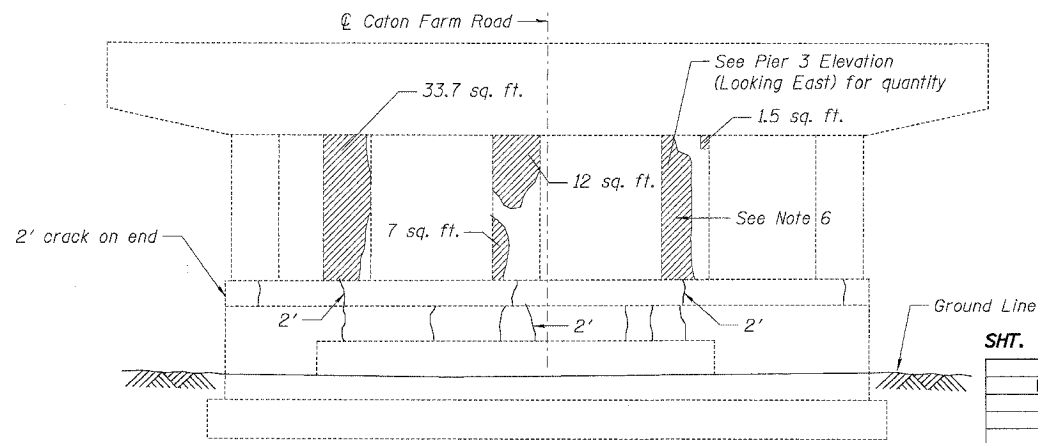
PIER 2 ELEVATION
(Looking East)



PIER 2 ELEVATION
(Looking West)



PIER 3 ELEVATION
(Looking East)



PIER 3 ELEVATION
(Looking West)

LEGEND

- Structural Repair of Concrete (Depth Equal to or less than 5")
- Epoxy Crack Injection
- Hairline Crack - Not to be sealed

Notes:

1. Crack widths to receive Epoxy Crack Injection are $\frac{1}{8}'' \pm \frac{1}{16}''$ unless noted otherwise.
2. Work this sheet with Sht. 1 of 2.
3. See Sht. 1 of 2 for notes.
4. Areas of repair are based upon inspection surveys conducted June 13, 2006 and increased by a factor of 1.1 to compensate for further deterioration. The type of repair (depth) quantities are assumed and shall be determined by the Engineer. The Engineer shall document actual locations and types of repairs on As-Built plans.
5. Apply protective coat to new concrete surfaces of structurally repaired concrete.
6. Repair work shall not be performed on both sides of the column at the same time.

SHT. 2 OF 2

REVISIONS	
NAME	DATE

ILLINOIS DEPARTMENT OF TRANSPORTATION
FAI ROUTE 55 (BLACK ROAD TO U.S. 30)
WIDENING AND RESURFACING
CATON FARM ROAD OVER I-55, S.N. 099-0210
STA. 199+97.84, SECTION 99 (1&2) WRS-2
WILL COUNTY

PIER REPAIRS

SCALE: DRAWN BY MW
DATE 02/23/07 CHECKED BY MJK

TENG

TENG & ASSOCIATES, INC.
ENGINEERS/ARCHITECTS/PLANNERS
CHICAGO, ILLINOIS

MORCOM, N.V., INC.
CONSULTING ENGINEERS
CHICAGO, ILLINOIS

PLOT DATE = 02/23/07
 FILE NAME = C:\PROJECTS\60B46\PIER REPAIRS\PIER REPAIRS.DWG
 USER NAME = MJK
 SA:\DOCUMENT\60B46\PIER REPAIRS\PIER REPAIRS.DWG