

F.A.P. NO.	SECTION	COUNTY	TOTAL SHEETS	SHEET NO.
303	131B(1&2)BR	McHENRY	107	66
STA.	TO STA.			
FED. ROAD DIST. NO.	ILLINOIS	FED. AID PROJECT		

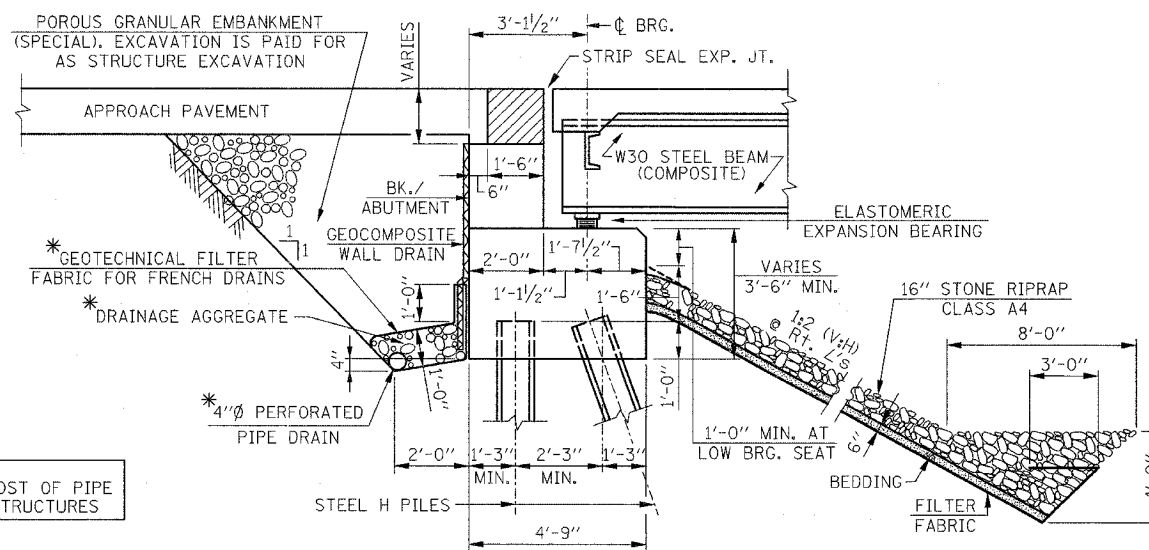
CONTRACT NO. 60883

TOTAL BILL OF MATERIAL

ITEM	UNIT	SUPER	SUB	TOTAL
POROUS GRANULAR EMBANKMENT (SPECIAL)	CU. YD.	-	133.7	133.7
STRUCTURE EXCAVATION	CU. YD.	-	264.3	264.3
REMOVAL OF EXISTING STRUCTURES NO. 1	EACH	-	-	1
CONCRETE STRUCTURES	CU. YD.	-	232.9	232.9
CONCRETE SUPERSTRUCTURES	CU. YD.	253.7	-	253.7
BRIDGE DECK GROOVING	SQ. YD.	772	-	772
PROTECTIVE COAT	SQ. YD.	966	-	966
REINFORCEMENT BARS, EPOXY COATED	LB.	55,020	30,850	85,870
FURNISHING STEEL PILES HP 12x53	FOOT	-	2,624	2,624
DRIVING PILES HP 12x53	FOOT	-	2,624	2,624
TEST PILES, STEEL HP 12x53	EACH	-	4	4
NAME PLATES	EACH	1	-	1
PIPE UNDERDRAINS FOR STRUCTURES, 4"	FOOT	-	182	182
GEOCOMPOSITE WALL DRAIN	SQ. YD.	-	28.9	28.9
CONCRETE ENCASEMENT	CU. YD.	-	26.8	26.8
FURNISHING AND ERECTING STRUCTURE STEEL	L.S.	0.70	-	0.70
STUD SHEAR CONNECTORS	EACH	4,767	-	4,767
TEMPORARY SHEET PILING	SQ. FT.	-	878	878
BAR SPLICERS	EACH	475	200	675
PILE SHOES	EACH	-	52	52
ANCHOR BOLTS 1"	EACH	56	-	56
UNDERWATER STRUCTURE EXCAVATION PROTECTION, LOCATION 1	EACH	-	1	1
PREFORMED JOINT STRIP SEAL	FOOT	115	-	115
DRAINAGE SCUPPERS, DS-11	EACH	2	-	2
ELASTOMERIC BEARING ASSEMBLY TYPE I	EACH	14	-	14
STONE RIPRAP, CLASS A4	SQ. YD.	-	645	645
FILTER FABRIC	SQ. YD.	-	631	631

GENERAL NOTES:

- CALCULATED WEIGHT OF STRUCTURAL STEEL = 155,000 LBS. (M270, GRADE 50) - 16,000 LBS. (M270, GRADE 36).
- FASTENERS SHALL BE AASHTO M164 TYPE I, MECHANICALLY GALVANIZED BOLTS, BOLTS 3/4 IN. Ø, HOLES 1/8 IN. Ø, UNLESS OTHERWISE NOTED.
- NO FIELD WELDING IS PERMITTED EXCEPT AS SPECIFIED IN THE CONTRACT DOCUMENTS.
- BEARING SEAT SURFACES SHALL BE CONSTRUCTED OR ADJUSTED TO THE DESIGNATED ELEVATIONS WITHIN A TOLERANCE OF 1/8 IN. (0.01 FT.). ADJUSTMENT SHALL BE MADE EITHER BY GRINDING THE SURFACE OF BY SHIMMING THE BEARINGS.
- THE INORGANIC ZINC RICH PRIMER/ACRYLIC/ACRYLIC PAINT SYSTEM SHALL BE USED FOR SHOP AND FIELD PAINTING OF NEW STRUCTURAL STEEL EXCEPT WHERE OTHERWISE NOTED. THE COLOR OF THE FINAL FINISH COAT FOR ALL INTERIOR STEEL SURFACES SHALL BE GRAY, MUNSELL NO. 5B 7/1. THE COLOR OF THE FINAL FINISH COAT FOR THE EXTERIOR AND BOTTOM FLANGE OF THE FASCIA BEAMS SHALL BE REDDISH BROWN MUNSELL NO. 2.5YR 3/4. SEE SPECIAL PROVISION FOR "CLEANING AND PAINTING NEW METAL STRUCTURES".
- REINFORCEMENT BARS SHALL CONFORM TO THE REQUIREMENTS OF ASTM A 706 GR. 60 (IL MODIFIED) SEE SPECIAL PROVISIONS.
- REINFORCEMENT BARS DESIGNATED (E) SHALL BE EPOXY COATED.
- LAYOUT OF SLOPE PROTECTION MAY BE VARIED TO SUIT GROUND CONDITIONS IN THE FIELD AS DIRECTED BY THE ENGINEER.
- FOR PAVEMENT REMOVAL AND CHANNEL EXCAVATION BETWEEN EXISTING AND NEW ABUTMENTS, SEE ROADWAY PLANS.
- FOR CLEANING OUT AND RESHAPING CHANNEL, SEE ROADWAY PLANS. REMOVAL OF EXISTING DEBRIS IN THE CHANNEL IS INCLUDED WITH PAY ITEM FOR "CHANNEL EXCAVATION".
- THE CONTRACTOR SHALL DRIVE TEST PILES TO 110% OF THE NOMINAL REQUIRED BEARING SPECIFIED IN PRODUCTION LOCATIONS AT SUBSTRUCTURES SPECIFIED OR APPROVED BY THE ENGINEER BEFORE ORDERING THE REMAINDER OF PILES.



* INCLUDED IN THE COST OF PIPE UNDERDRAINS FOR STRUCTURES

ALL DRAINAGE SYSTEM COMPONENTS SHALL EXTEND 2'-0" FROM THE END OF EACH WINGWALL EXCEPT AN OUTLET PIPE SHALL EXTEND UNTIL INTERSECTING WITH THE SIDE SLOPES. THE PIPES SHALL DRAIN INTO CONCRETE HEADWALLS (SEE ART. 601.05 OF THE STANDARD SPECIFICATIONS AND HIGHWAY STANDARD 601101)

SECTION THRU ABUTMENT

Rev. 6-5-07

REVISIONS	
NAME	DATE

ILLINOIS DEPARTMENT OF TRANSPORTATION
 GENERAL NOTES & TOTAL BILL OF MATERIAL
 IL. RTE. 173
 OVER
 PISCASAW CREEK
 F.A.P. RTE. 303 SECTION: 131B(1&2)BR
 McHENRY COUNTY STATION 100+00.00
 STRUCTURE NO. 056-0090
 SCALE: DRAWN BY: D.L./F.M.
 DATE: APRIL 2, 2007 CHECKED BY: B.N.S./J.C.N.
CHRISTIAN-ROGE & ASSOC., INC.
 CHICAGO ILLINOIS