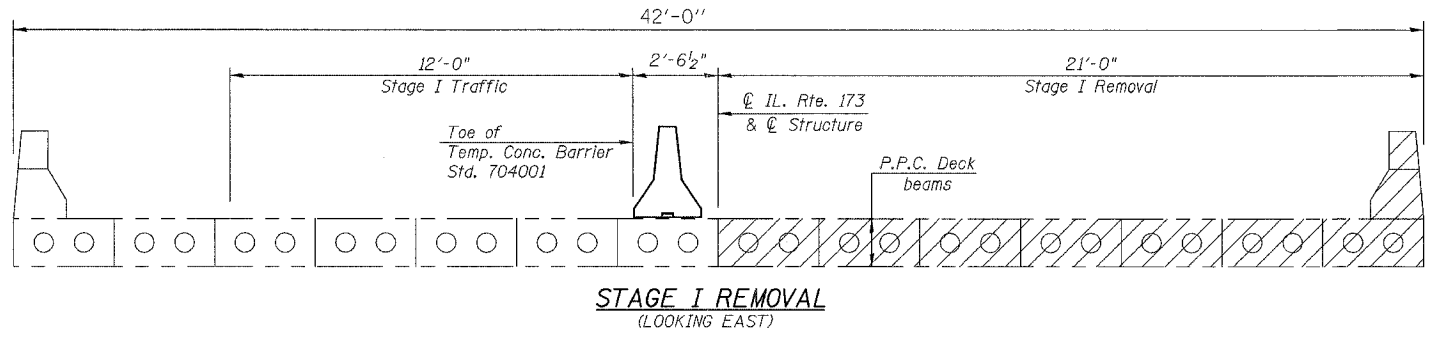
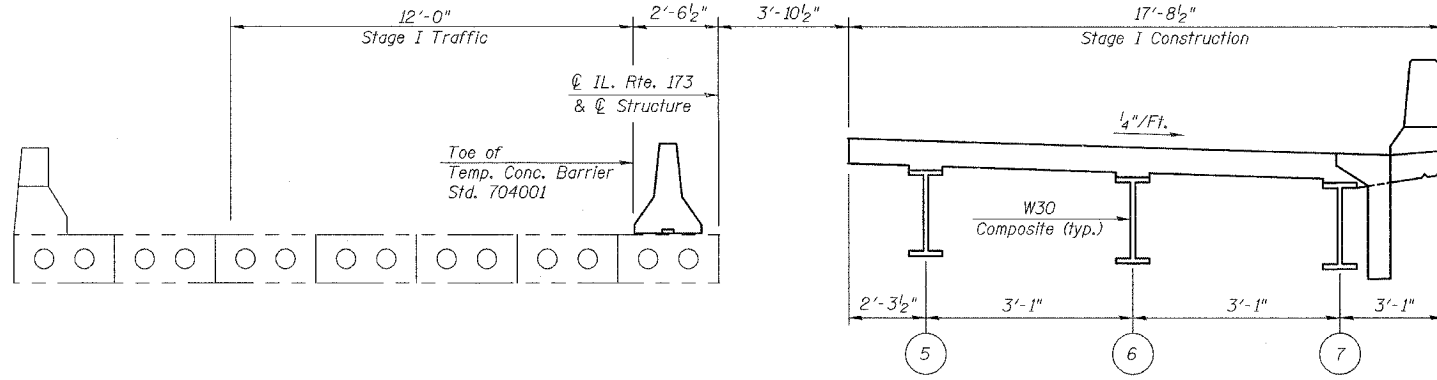


F.A.P. DIST.	SECTION	COUNTY	TOTAL SHEETS	SHEET NO.
303	131B(1&2)BR	McHENRY	107	67
STA. TO STA.				
FED. ROAD DIST. NO. ILLINOIS FED. AID PROJECT				

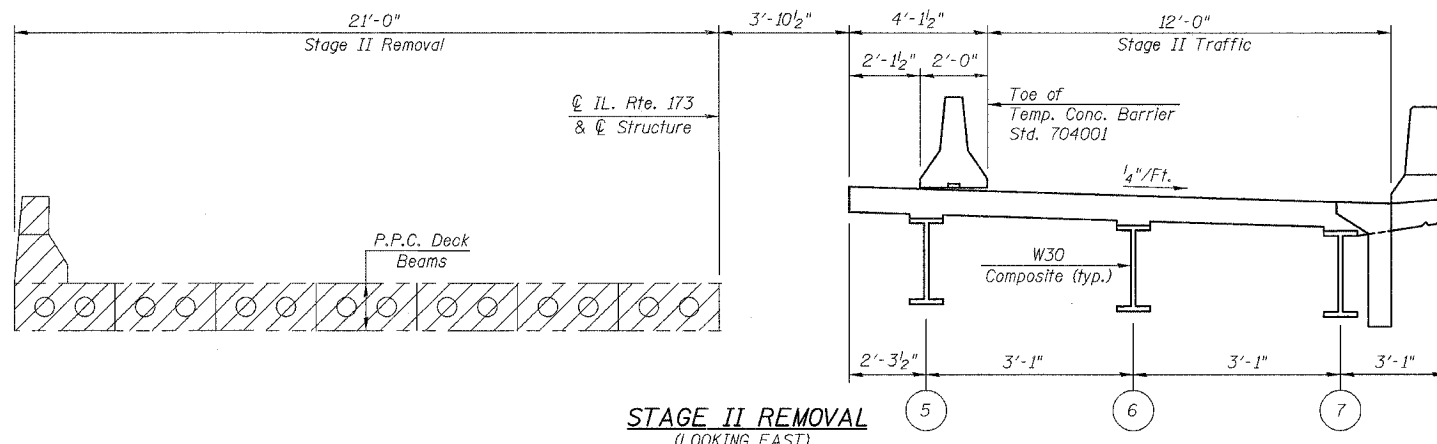
CONTRACT NO. 60B83



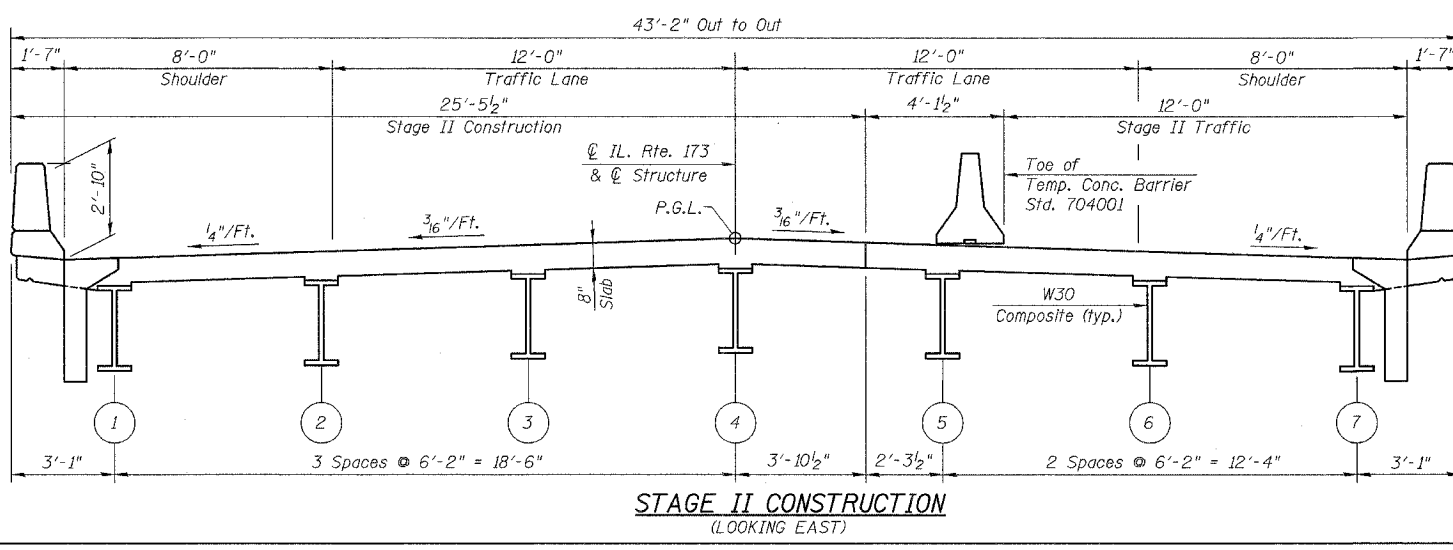
**STAGE I REMOVAL**  
(LOOKING EAST)



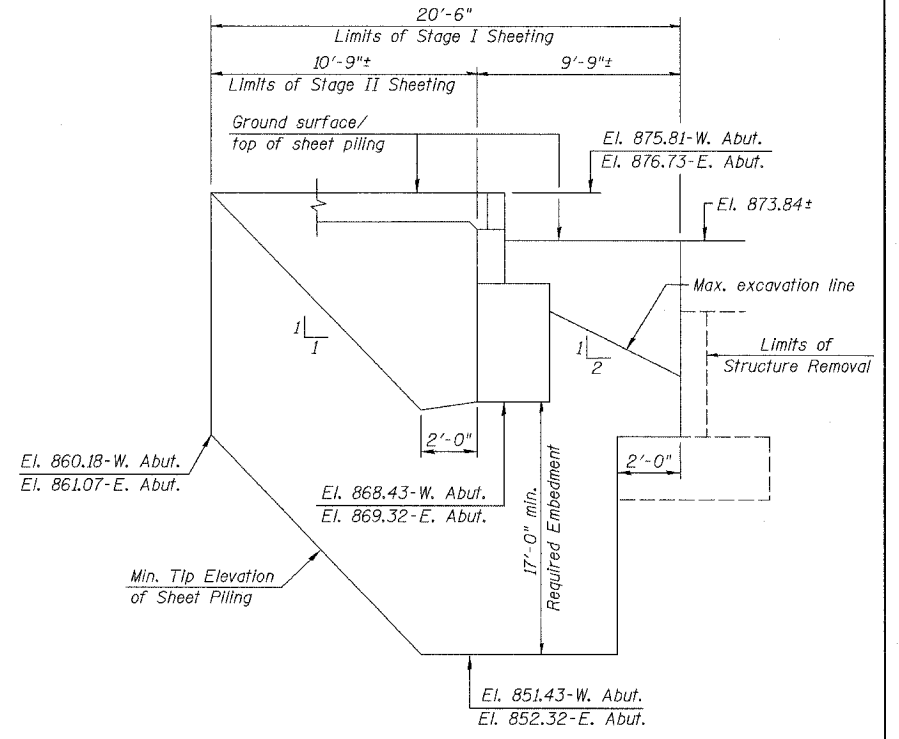
**STAGE I CONSTRUCTION**  
(LOOKING EAST)



**STAGE II REMOVAL**  
(LOOKING EAST)



**STAGE II CONSTRUCTION**  
(LOOKING EAST)



Sheet Piling shall be Anchored to the existing Abutment  
Minimum Embedment Depth = 17 ft.  
Minimum Section Modulus of Sheet Piling = 14.3 in<sup>3</sup>/ft.

**TEMPORARY SHEET PILING AT ABUTMENTS**

*Notes:*  
If the contractor chooses to alter the temporary cantilevered sheet piling design requirements shown on the plans, a design submittal including plan details and calculations will be required for review and acceptance by the engineer.

The contractor shall connect the first sheet to the existing abutment wall to ensure stability of sheets driven to the top of the existing footing. This connection shall be reviewed and accepted by the engineer and included in the cost for temporary sheet piling.

REVISIONS	
NAME	DATE

ILLINOIS DEPARTMENT OF TRANSPORTATION

CONSTRUCTION STAGING & TEMPORARY SHEET PILING  
IL. RTE. 173 OVER  
PISCASAW CREEK  
F.A.P. RTE. 303 SECTION: 131B(1&2)BR  
McHENRY COUNTY STATION 100+00.00  
STRUCTURE NO. 056-0090

SCALE: DATE: APRIL 2, 2007 DRAWN BY: D.L./F.M.  
CHECKED BY: B.N.S./J.C.N.

**CHRISTIAN-ROGE & ASSOC., INC.**  
CHICAGO ILLINOIS