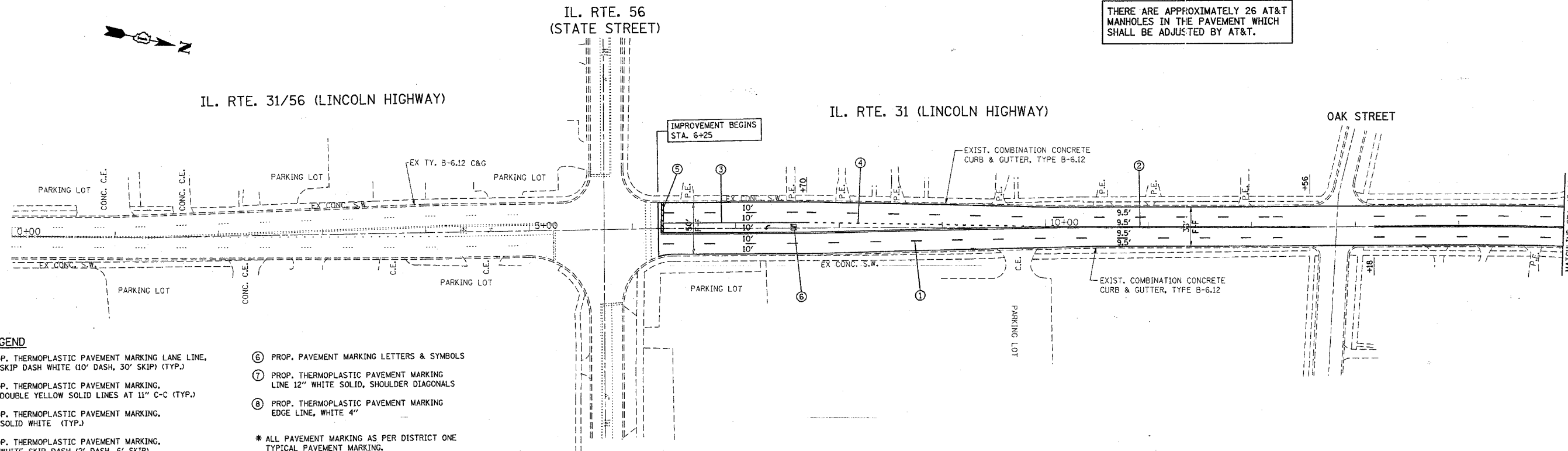


\*REF-plan01  
\*REF-plan02

CONTRACT NO. 60C66

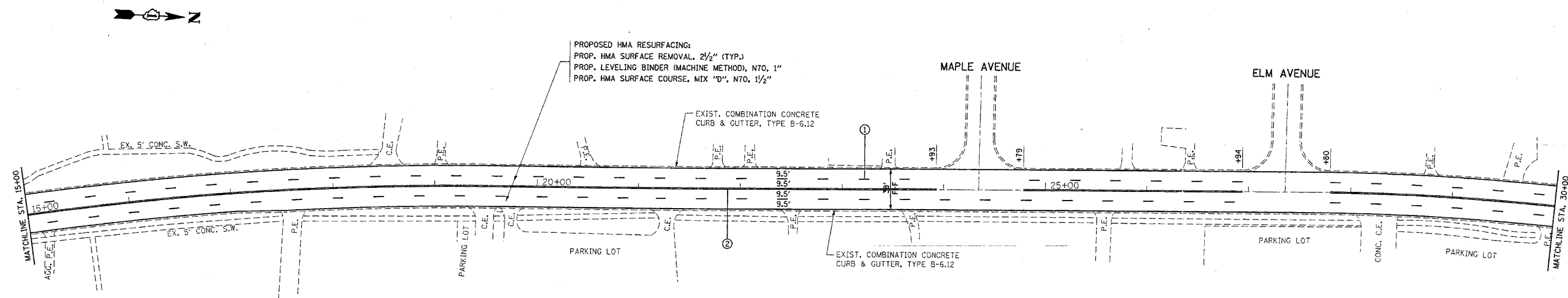
F.A.U. RTE.	SECTION	COUNTY	TOTAL SHEETS	SHEET NO.
3887	A-R-RS-3	KANE	24	7
STA. 0+00		TO STA. 30+00		
FED. ROAD DIST. NO.		ILLINOIS FED. AID PROJECT		

THERE ARE APPROXIMATELY 26 AT&T MANHOLES IN THE PAVEMENT WHICH SHALL BE ADJUSTED BY AT&T.



**LEGEND**

- ① PROP. THERMOPLASTIC PAVEMENT MARKING LANE LINE, 4" SKIP DASH WHITE (10' DASH, 30' SKIP) (TYP.)
  - ② PROP. THERMOPLASTIC PAVEMENT MARKING, 4" DOUBLE YELLOW SOLID LINES AT 11" C-C (TYP.)
  - ③ PROP. THERMOPLASTIC PAVEMENT MARKING, 6" SOLID WHITE (TYP.)
  - ④ PROP. THERMOPLASTIC PAVEMENT MARKING, 6" WHITE SKIP DASH (2' DASH, 6' SKIP)
  - ⑤ PROP. THERMOPLASTIC PAVEMENT MARKING LINE 24" SOLID WHITE (STOP BAR)
  - ⑥ PROP. PAVEMENT MARKING LETTERS & SYMBOLS
  - ⑦ PROP. THERMOPLASTIC PAVEMENT MARKING LINE 12" WHITE SOLID, SHOULDER DIAGONALS
  - ⑧ PROP. THERMOPLASTIC PAVEMENT MARKING EDGE LINE, WHITE 4"
- \* ALL PAVEMENT MARKING AS PER DISTRICT ONE TYPICAL PAVEMENT MARKING.  
\*\* PROPOSED RAISED REFLECTIVE PAVEMENT MARKING, AS PER DISTRICT ONE DETAILS.



PROPOSED HMA RESURFACING:  
PROP. HMA SURFACE REMOVAL, 2 1/2" (TYP.)  
PROP. LEVELING BINDER (MACHINE METHOD), N70, 1"  
PROP. HMA SURFACE COURSE, MIX "D", N70, 1 1/2"

REVISIONS	
NAME	DATE

ILLINOIS DEPARTMENT OF TRANSPORTATION  
**IL. ROUTE 31  
ROADWAY AND  
PAVEMENT MARKING PLAN**  
SCALE: 1" = 50'  
DATE: 4/12/2007  
DRAWN BY  
CHECKED BY

PLOT DATE = 4/12/2007  
PLOT SCALE = 1/8" = 1' IN.  
USER NAME = bauer-dl