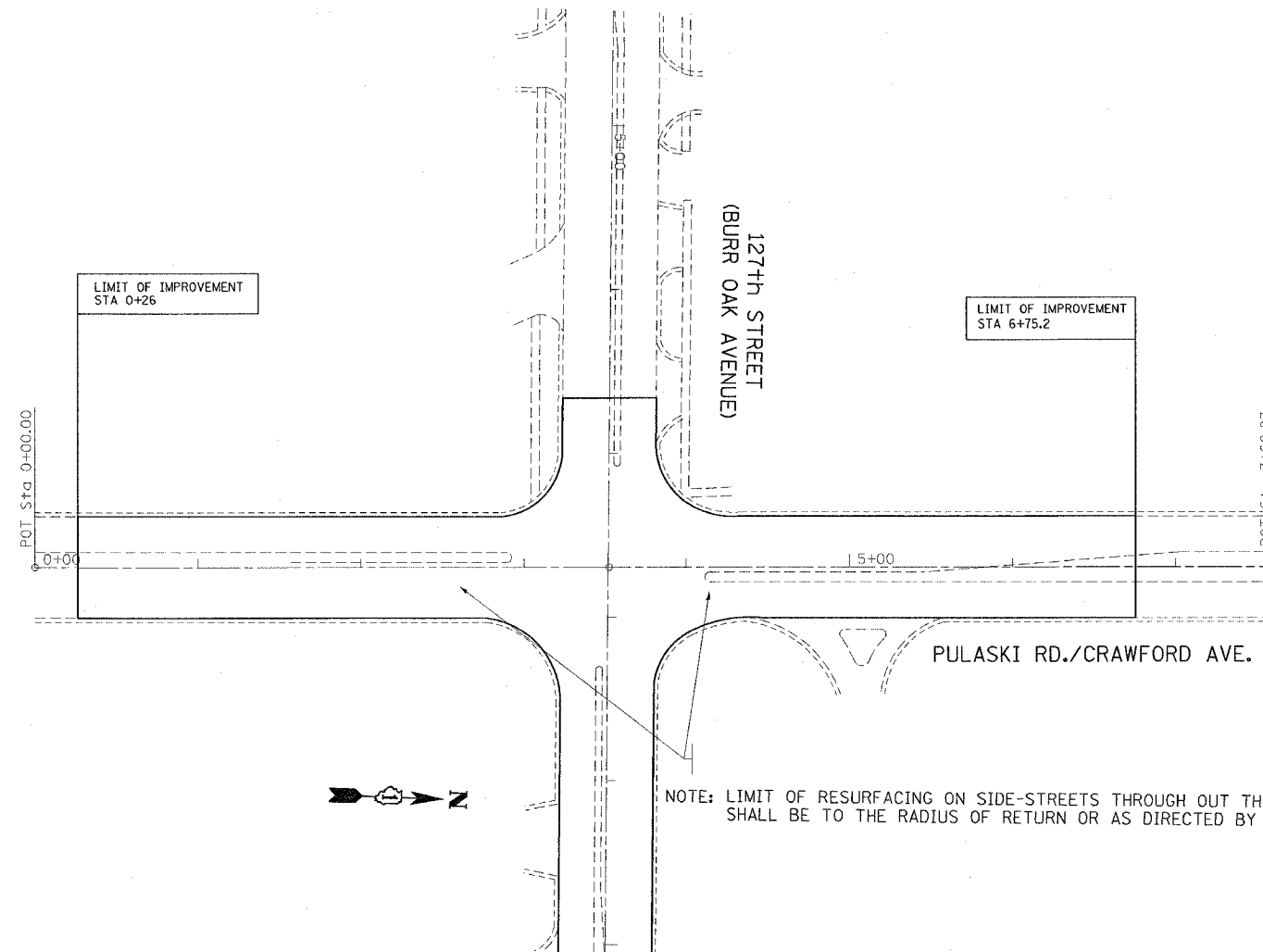
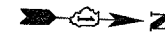


F.A.P. RTE.	SECTION	COUNTY	TOTAL SHEETS	SHEET NO.
344	3034 RS-3	COOK	24	7
STA.		TO STA.		
FED. ROAD DIST. NO.	ILLINOIS	FED. AID PROJECT		



NOTE: LIMIT OF RESURFACING ON SIDE-STREETS THROUGH OUT THE IMPROVEMENT SHALL BE TO THE RADIUS OF RETURN OR AS DIRECTED BY THE ENGINEER.



PLOT DATE = 4/11/2007  
 PLOT SCALE = 50.0000 / IN  
 USER NAME = bgarsh

REVISIONS	
NAME	DATE

ILLINOIS DEPARTMENT OF TRANSPORTATION  
**ROADWAY PLAN**  
**127th STREET**  
**CRAWFORD AVE. TO KEDZIE AVE.**

SCALE: VERT. 1"=50'  
 HORIZ. 1"=50'  
 DATE 4/11/2007

DRAWN BY  
 CHECKED BY