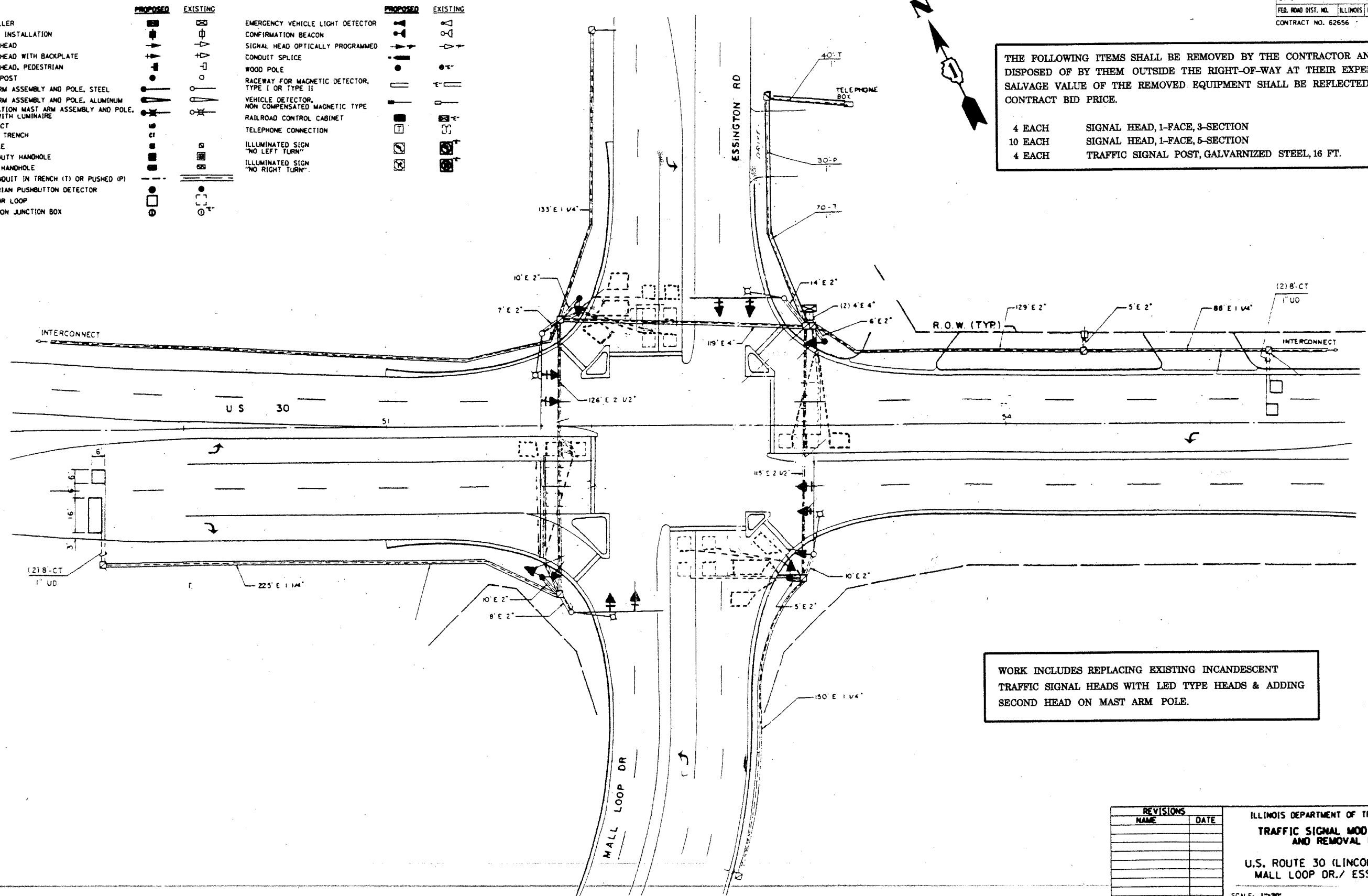


**TRAFFIC SIGNAL LEGEND**

	PROPOSED	EXISTING		PROPOSED	EXISTING
CONTROLLER	[Symbol]	[Symbol]	EMERGENCY VEHICLE LIGHT DETECTOR	[Symbol]	[Symbol]
SERVICE INSTALLATION	[Symbol]	[Symbol]	CONFIRMATION BEACON	[Symbol]	[Symbol]
SIGNAL HEAD	[Symbol]	[Symbol]	SIGNAL HEAD OPTICALLY PROGRAMMED	[Symbol]	[Symbol]
SIGNAL HEAD WITH BACKPLATE	[Symbol]	[Symbol]	CONDUIT SPLICE	[Symbol]	[Symbol]
SIGNAL HEAD, PEDESTRIAN	[Symbol]	[Symbol]	WOOD POLE	[Symbol]	[Symbol]
SIGNAL POST	[Symbol]	[Symbol]	RACEWAY FOR MAGNETIC DETECTOR, TYPE I OR TYPE II	[Symbol]	[Symbol]
MAST ARM ASSEMBLY AND POLE, STEEL	[Symbol]	[Symbol]	VEHICLE DETECTOR, NON COMPENSATED MAGNETIC TYPE	[Symbol]	[Symbol]
MAST ARM ASSEMBLY AND POLE, ALUMINUM	[Symbol]	[Symbol]	RAILROAD CONTROL CABINET	[Symbol]	[Symbol]
COMBINATION MAST ARM ASSEMBLY AND POLE, STEEL WITH LUMINAIRE	[Symbol]	[Symbol]	TELEPHONE CONNECTION	[Symbol]	[Symbol]
UNIT DUCT	[Symbol]	[Symbol]	ILLUMINATED SIGN "NO LEFT TURN"	[Symbol]	[Symbol]
COMMON TRENCH	[Symbol]	[Symbol]	ILLUMINATED SIGN "NO RIGHT TURN"	[Symbol]	[Symbol]
HANDHOLE	[Symbol]	[Symbol]			
HEAVY DUTY HANDHOLE	[Symbol]	[Symbol]			
DOUBLE HANDHOLE	[Symbol]	[Symbol]			
G.S. CONDUIT IN TRENCH (T) OR PUSHED (P)	[Symbol]	[Symbol]			
PEDESTRIAN PUSHBUTTON DETECTOR	[Symbol]	[Symbol]			
DETECTOR LOOP	[Symbol]	[Symbol]			
CAST IRON JUNCTION BOX	[Symbol]	[Symbol]			

THE FOLLOWING ITEMS SHALL BE REMOVED BY THE CONTRACTOR AND SHALL BE DISPOSED OF BY THEM OUTSIDE THE RIGHT-OF-WAY AT THEIR EXPENSE. THE SALVAGE VALUE OF THE REMOVED EQUIPMENT SHALL BE REFLECTED IN THE CONTRACT BID PRICE.

4 EACH SIGNAL HEAD, 1-FACE, 3-SECTION  
 10 EACH SIGNAL HEAD, 1-FACE, 5-SECTION  
 4 EACH TRAFFIC SIGNAL POST, GALVARNIZED STEEL, 16 FT.



WORK INCLUDES REPLACING EXISTING INCANDESCENT TRAFFIC SIGNAL HEADS WITH LED TYPE HEADS & ADDING SECOND HEAD ON MAST ARM POLE.

REVISIONS	
NAME	DATE

ILLINOIS DEPARTMENT OF TRANSPORTATION  
**TRAFFIC SIGNAL MODIFICATION AND REMOVAL PLAN**  
 U.S. ROUTE 30 (LINCOLN HWY.) AT MALL LOOP DR./ ESSINGTON RD.  
 SCALE: 1"=20'  
 DATE: 03-20-2007  
 DRAWN BY: SA  
 DESIGNED BY: SA  
 CHECKED BY: DAD